



OnBase Software Renewal Agreement

Dean Unger

January 20, 2026

SAWPA Commission

Recommendation

It is recommended that the Commission authorize the General Manager to execute a 5-year fixed cost OnBase Subscription Agreement and Task Order No. KON100-15 with BlueIrisIQ, A Division of Konica Minolta Business Solutions U.S.A., Inc. for \$194,264.89.

Background

- OnBase by Hyland is a comprehensive Enterprise Content Management (ECM) and process automation platform that helps organizations manage, automate, and share content, documents, and data within a single system, acting like a smart digital filing cabinet combined with workflow automation
- SAWPA has been using OnBase since 2013 when SAWPA moved from a Liberty Document Management system.
- SAWPA currently stores over 100,000 pages ranging from the mid 70's agreements to current Agreements, Agendas, presentations etc.



Background continued

- SAWPA staff use OnBase workflow to manage and approve Invoices.
- OnBase is interconnected to our finance system to allow invoices to be displayed from either system.
- OnBase documents are stored local to allow quick access with no transaction or cloud storage fees.
- SAWPA has the ability to share documents thru OnBase's web access to external agencies.



Purpose of OnBase software

- Centralizes Documents and Information
- Improves Access and Retrieval
- Automates Business Processes and Workflows
- Replaces Paper and Manual Processes
- Strengthens Compliance and Records Management
- Integrates With Existing Systems
- Enhances Case and Content Management
- Supports Collaboration and Knowledge Sharing
- Improves Security and Risk Management
- Provides Reporting and Analytics



Software Fee – Options



<i>Do Nothing</i>	Year 1	Year 2	Year 3	Year 4	Year 5
Current Maintenance plus 10% increase	\$23,320	\$25,652	\$28,217	\$31,038	\$34,142
Current Subscription plus 10% increase	\$8,541	\$9,395	\$10,335	\$11,368	\$12,505
Extended Support Fee (ESF)	\$7,241	\$8,762	\$9,638	\$10,602	\$11,662
Total:	\$39,102	\$43,809	\$48,190	\$53,008	\$58,309

5 Year Total: \$242,418.00

<i>Move to Simplified Subscription</i>	Year 1	Year 2	Year 3	Year 4	Year 5
<i>Simplified with Upgrade</i>	\$30,412.55	\$38,015.68	\$39,916.47	\$41,912.29	\$44,007.91

5 Year Total: \$194,264.90

Competing ECM Option

- Migration to less expensive competing ECM.
- Competing ECM software packages can be 10% to 15% cheaper but migration costs eat up any saving for the first 5 years.
- Migration costs make up the bulk of the costs to move to another platform.
- Migration costs range from \$100,000 to 250,000 for small organization like SAWPA.

SAWPA staff will review this option in the next five years as we move to a new financial system.

Recommendation

It is recommended that the Commission authorize the General Manager to execute a 5-year fixed cost OnBase Subscription Agreement and Task Order No. KON100-15 with BlueIrisIQ, A Division of Konica Minolta Business Solutions U.S.A., Inc. for \$194,264.89.

Questions

Dean Unger

*Information System and Technology
Manager*

dunger@sawpa.gov



Updates on the Santa Ana River Watershed CARP

Haley Gohari

January 20, 2026

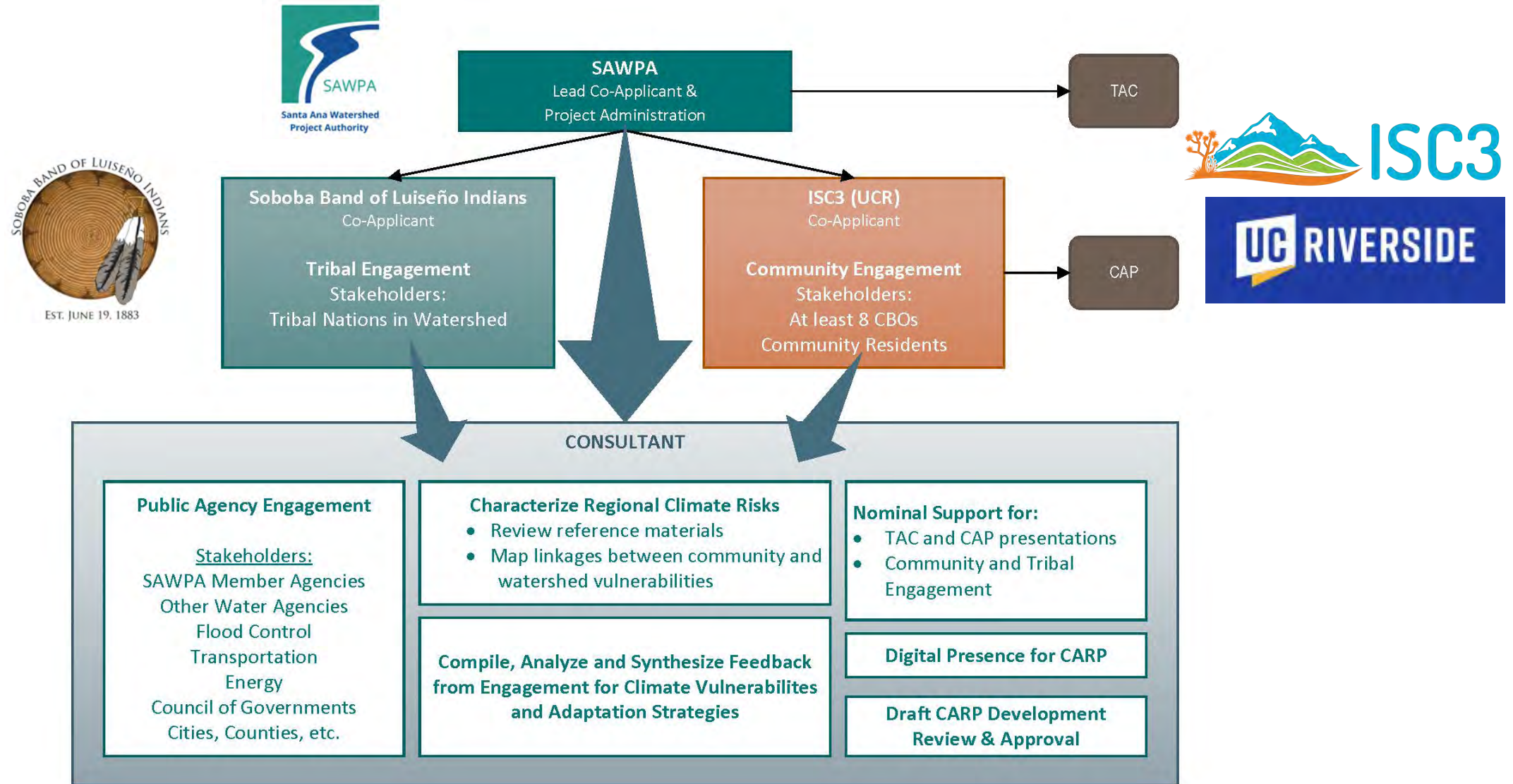
SAWPA Commission

Agenda

- CARP Overview
- Completed Deliverables
- Vision Statement of CARP
- Goal Statements of CARP
- Annotated Summary
- Cascading Climate Impacts
- WRTAC Updates
- WRCAP Updates
- Schedule
- Next Steps



CARP Overview

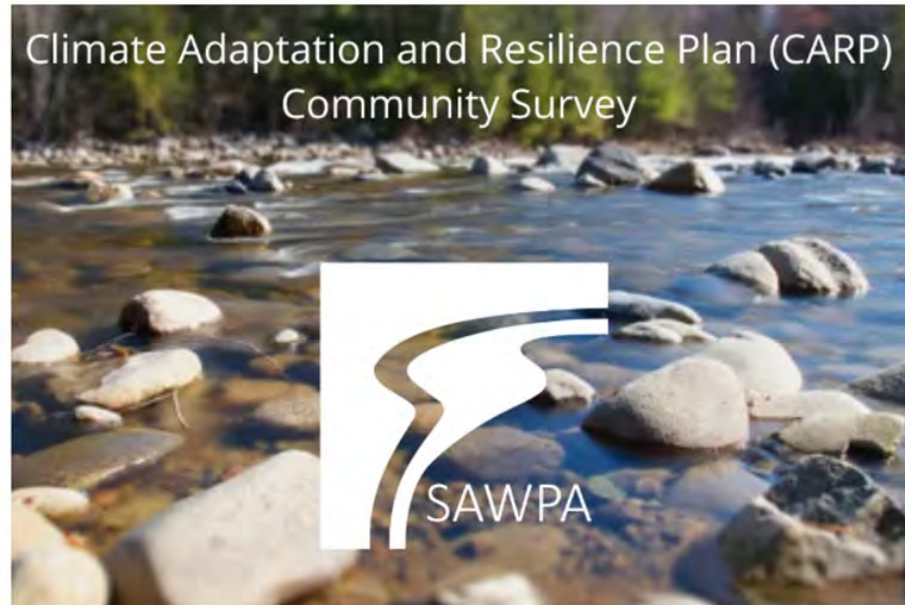


CARP Overview: Outreach & Engagement Plan



- Public Agency Engagement
 - 3 Rounds of Workshops
 - Surveys
- Community Engagement
 - Survey
 - Presentations and Listening Sessions
 - Interviews and Testimonials
- Tribal Engagement
 - Survey
 - Talking circles
 - Presentations

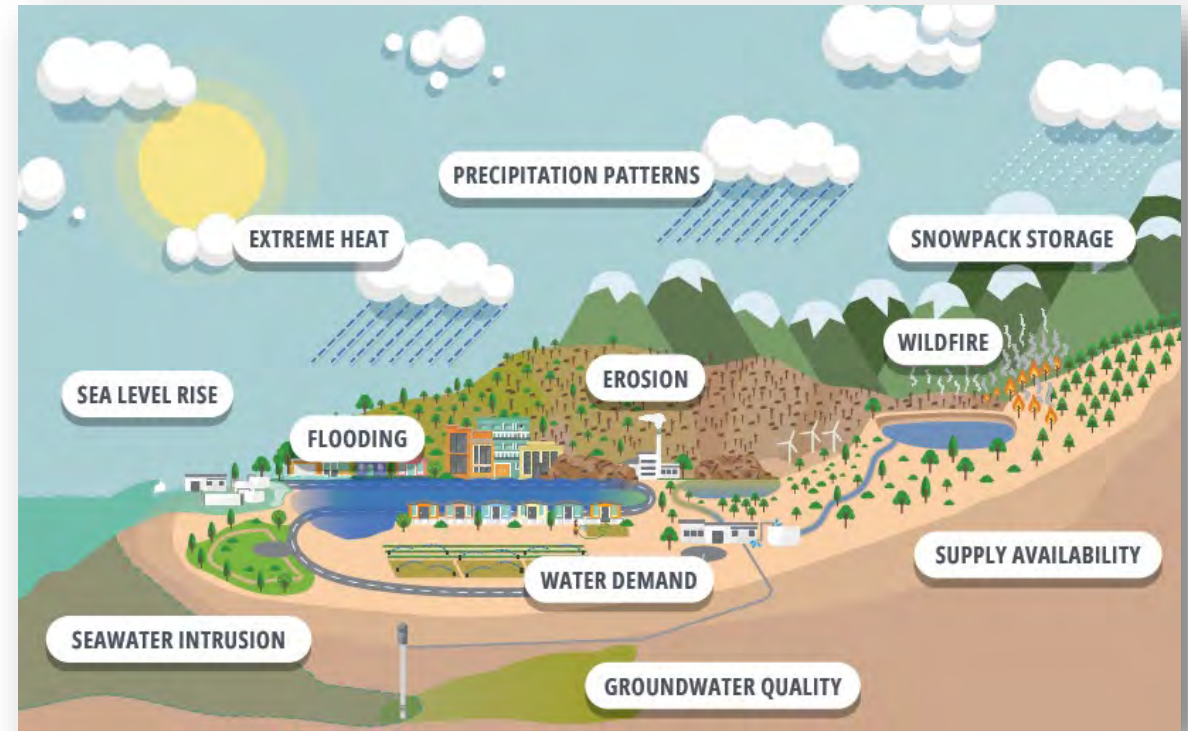
Climate Adaptation and Resilience Plan (CARP) Community Survey



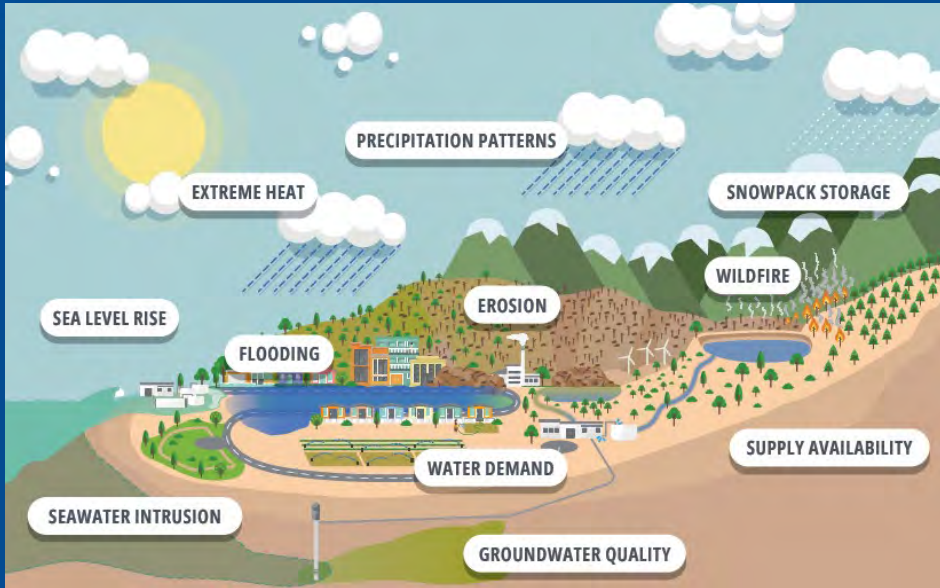
We want to hear from you! This quick, 5-minute survey will help shape local programs and funding to protect our community from climate change impacts like extreme heat, flooding, and wildfire. Your responses are anonymous.

CARP Overview: Regional Outputs

- Resilience Portfolios within:
 - Stormwater management (green infrastructure, capture and use)
 - Groundwater recharge
 - Water use efficiency
 - Nature-based solutions
 - Urban solutions (urban forestry)
 - Multi-benefit approaches
 - Regional solutions
- Funding Strategies to ensure Programmatic and Collaborative Approaches for Resilience Portfolios
- Performance Metrics to Achieve Measurable Outcomes
- Digital Presence (sawpa.gov/carp)



Completed Deliverables



Completed Deliverables

- Project Workplan – Complete
- Outreach and Engagement Plans – Complete
 - Community Survey
- Collected Watershed Plans and References-Complete
- Community and Stakeholder Framework – Complete
- Watershed Resilience Vision and Goal Statements - Complete

Vision Statement of CARP



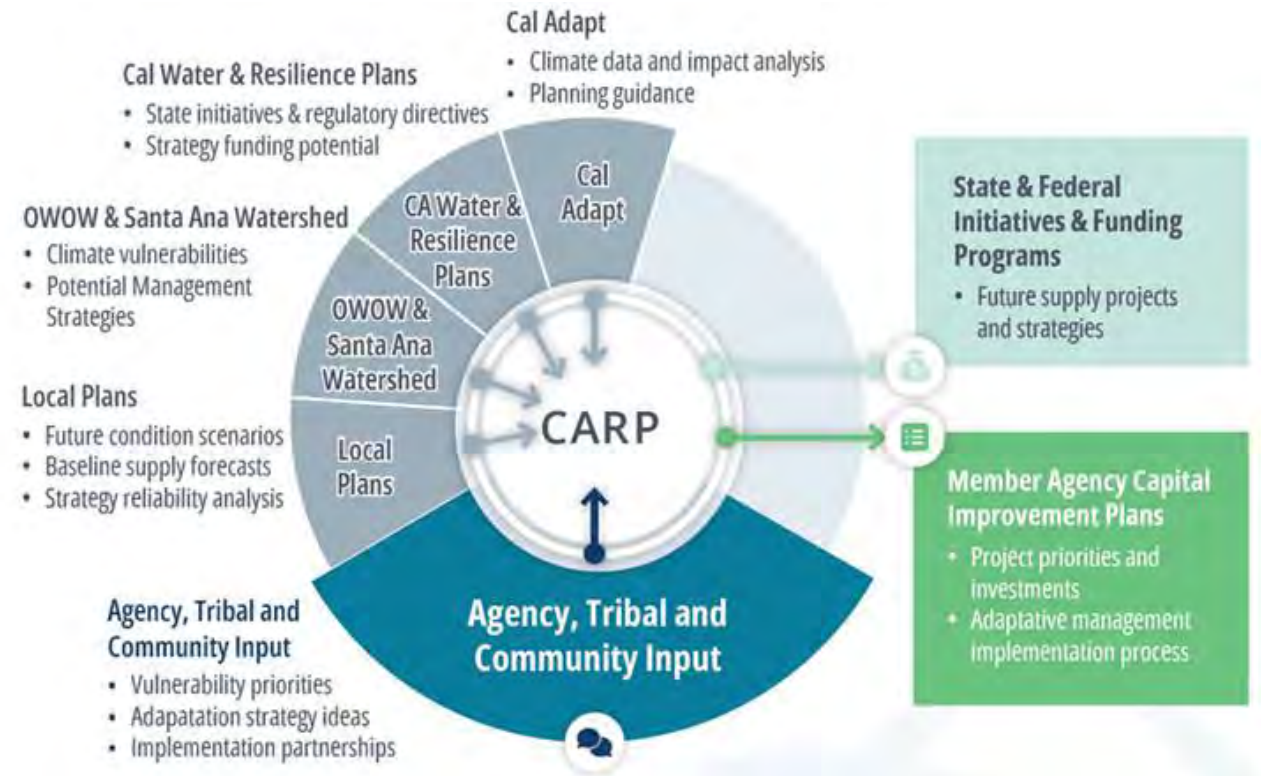
Through a collaborative approach, the CARP will enhance the resilience and adaptability of the Santa Ana River Watershed to effectively mitigate climate risks, support water resource sustainability, and ensure protection of benefits for all communities in the Watershed, fostering a thriving environment and economy for current and future generations.

Goal Statements of CARP

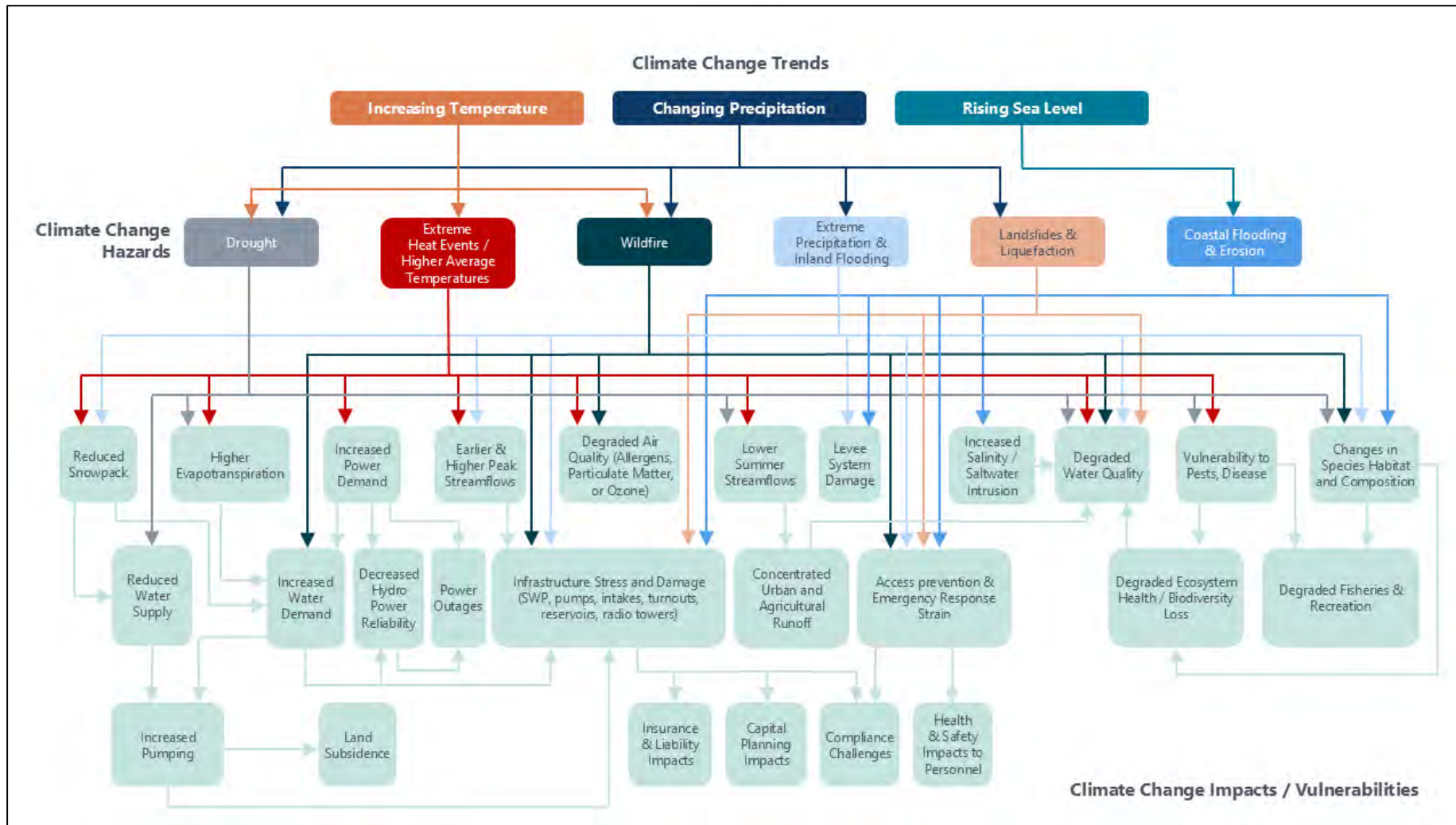
- 1. Facilitate cross-agency collaboration around sustainability to identify creative synergies, cost-sharing opportunities, and funding to promote positive impacts at the watershed level.**
- 2. Ensure that water resource sustainability, ecosystem protection and restoration, and economic benefits are integral components of climate adaptation that bolster advocacy for funding at the state level.**
- 3. Become an adaptive watershed that promotes scalable actions that respond to and recover from climate-related impacts.**
- 4. Maintain a diverse, resilient, and scalable regional water portfolio through the expansion and enhancement of local supply development, recycled water, stormwater capture, strategic imports, and transfer opportunities.**
- 5. Leverage watershed-scale resources to empower vulnerable communities through targeted investments and partnerships that foster equitable, inclusive, and community driven climate adaptation strategies.**

Annotated Summary

- 106 watershed plans/references reviewed
- **Primary focus:**
 - Summary Document
 - Factors identified previously and in other planning processes
 - No new technical analysis added
 - No climate modeling was performed
 - Establishment of baseline understanding of conditions
- **Goal:** Aggregate and summarize previously identified climate-related hazards & vulnerabilities in existing planning documents
- Trends, Hazards and Vulnerabilities



Cascading Climate Impacts



Watershed Resilience Technical Advisory Committee (TAC) Updates

SAWPA	The Soboba Band of Luiseño Indians	ISC3/UCR
OCWD	EMWD	WMWD
IEUA	SBVMWD	RCFCWCD
OC Watersheds	SBCFCD	Connecting Wildlands and Communities
CalTrans	MWDSC	RWQCB

- Three Meetings Conducted
 - Provided Reference Materials for Annotated Summary
 - Provided Input on and Finalized Watershed Resilience Vision and Goal Statements for CARP
 - Reviewed and provided feedback on Annotated Summary

Woodard & Curran Currently Working On:

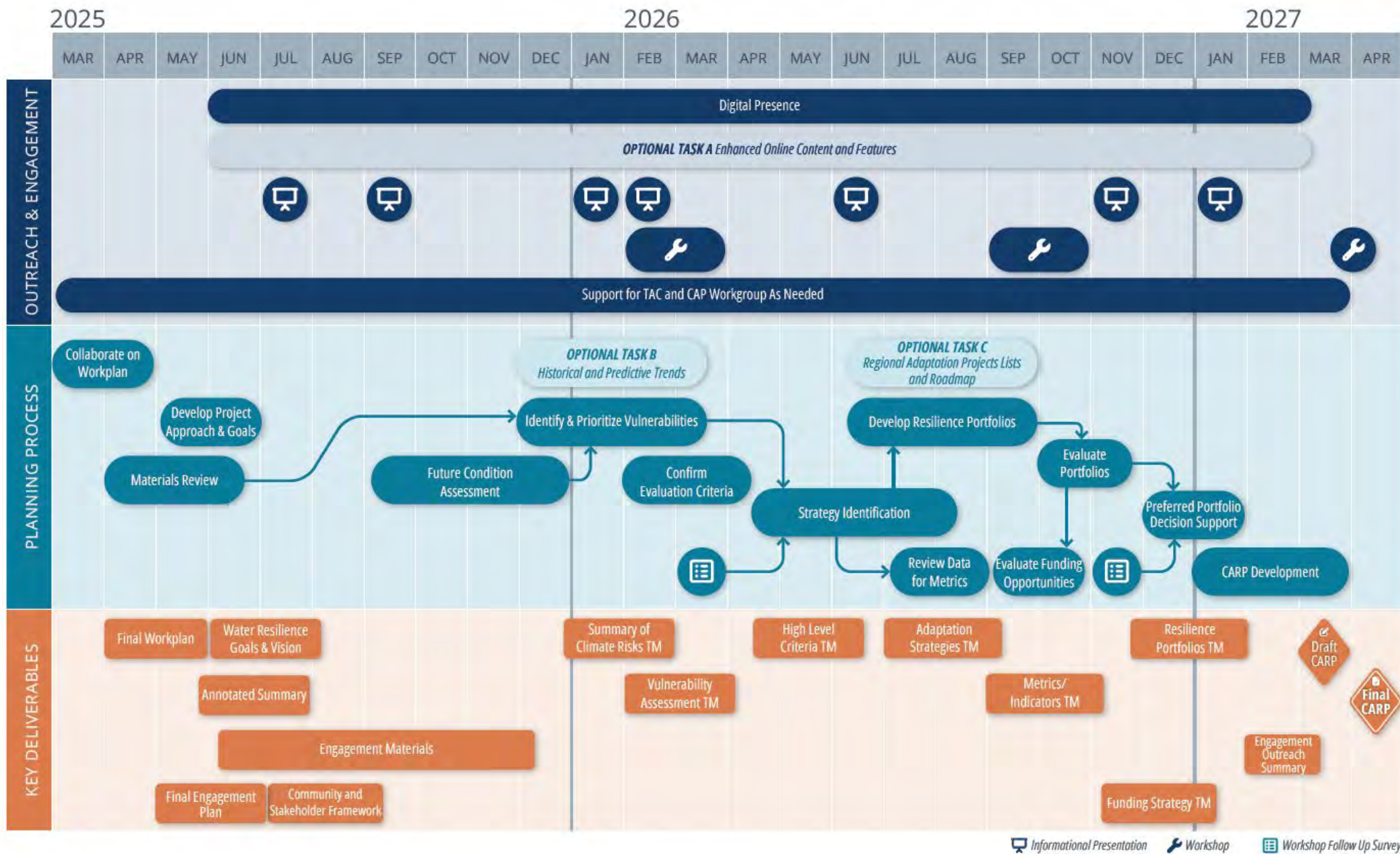
- Finalizing the Annotated Summary
- Conducting Climate Analysis
- Drafting the Climate Risks TM and the Climate Vulnerabilities TM

Next Meeting: April 27, 2026

Watershed Resilience Community Advisory Panel (CAP) Updates



- Community-Based Organization Partners
 - 8 Funded Organizations, 3 Passive Partners
 - Community Survey went live on August 14, 2025, and will remain available through Fall 2026.
 - QR Codes provided for each CBO
- Conducting Community Engagement Element
- Oversight, guidance and support for CBOs
- Three CAP meetings have been held.
- Will be mapping community survey response data &



Next Steps

- Working Occurring Currently – W&C:
 - Finalizing Annotated Summary – Comments Received
 - Climate Analysis, Climate Risks TM and Vulnerability Assessment TM
- Tracking Funding Opportunities
- Preparing for Public Agency Engagement Workshops
 - Expect an email request from Haley (hgohari@sawpa.gov) or Emily (efuentes@sawpa.gov) seeking your recommended contacts to invite to the Public Agency Workshops with Woodard & Curran

Questions?

Haley Gohari

Watershed Manager

hgohari@sawpa.gov