



# Riverside County Parks Rangers Proposal

---

**Ian Achimore**

*October 7, 2025*

SAWPA Commission Meeting

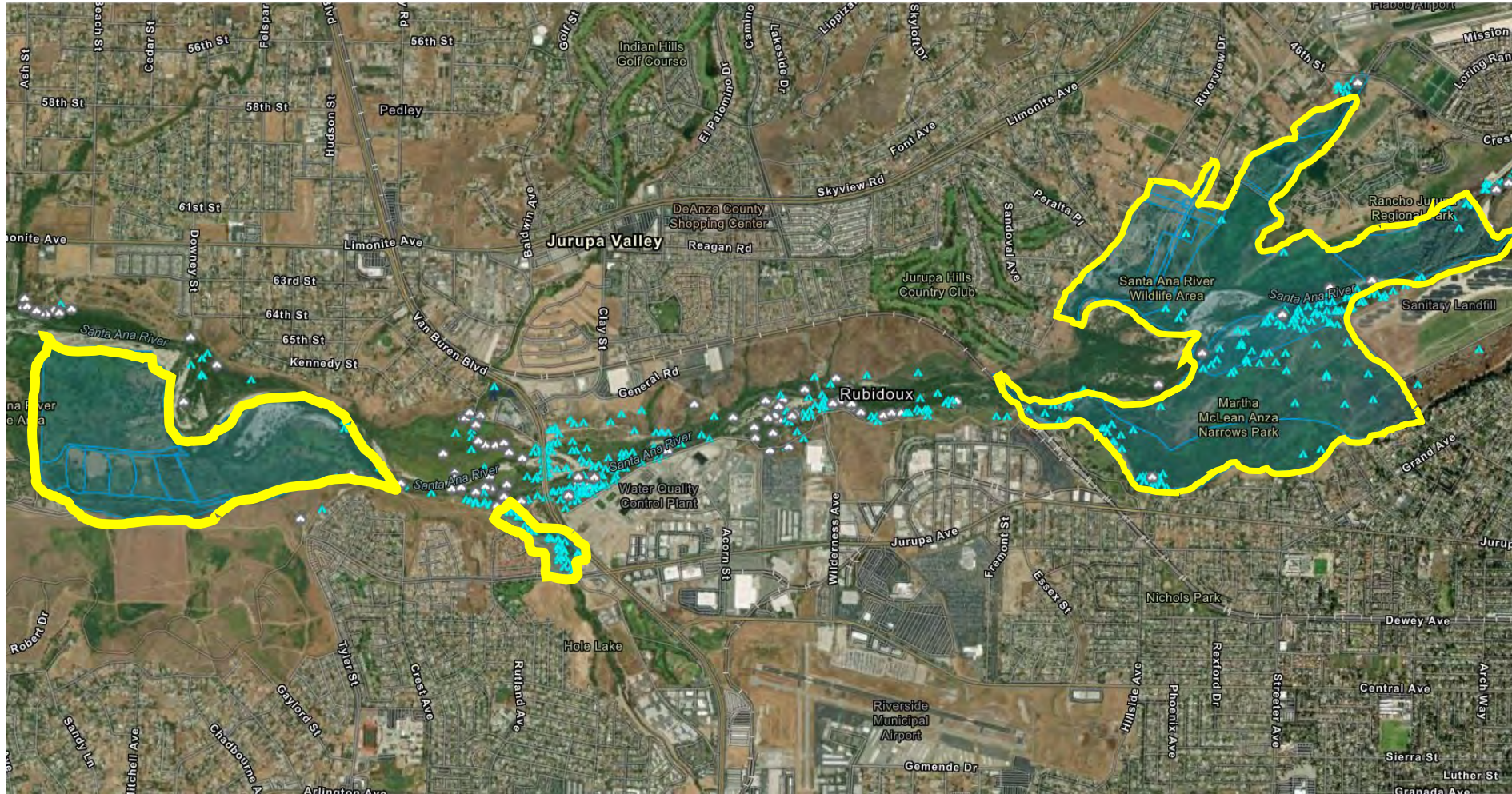
# Purpose of Presentation

---

- On September 16, 2025, Commissioners requested follow-up information be provided on SAWPA funding for Riverside County Regional Park and Open-Space District (RivCo Parks) Rangers.
- This request followed a presentation on that day by RivCo Parks who provided an overview of the Santa Ana River Bottom Collaborative.
- Currently, SBVMWD funds four rangers, one maintenance staff, and 0.1 manager time through their own RivCo Parks agreement.
- These staff manage SBVMWD's mitigation areas (next slide).



# SBVMWD Areas (In Yellow)



165

Encampments  
Documented  
(Past/Present)



# Larger Approximately 8-Mile Area

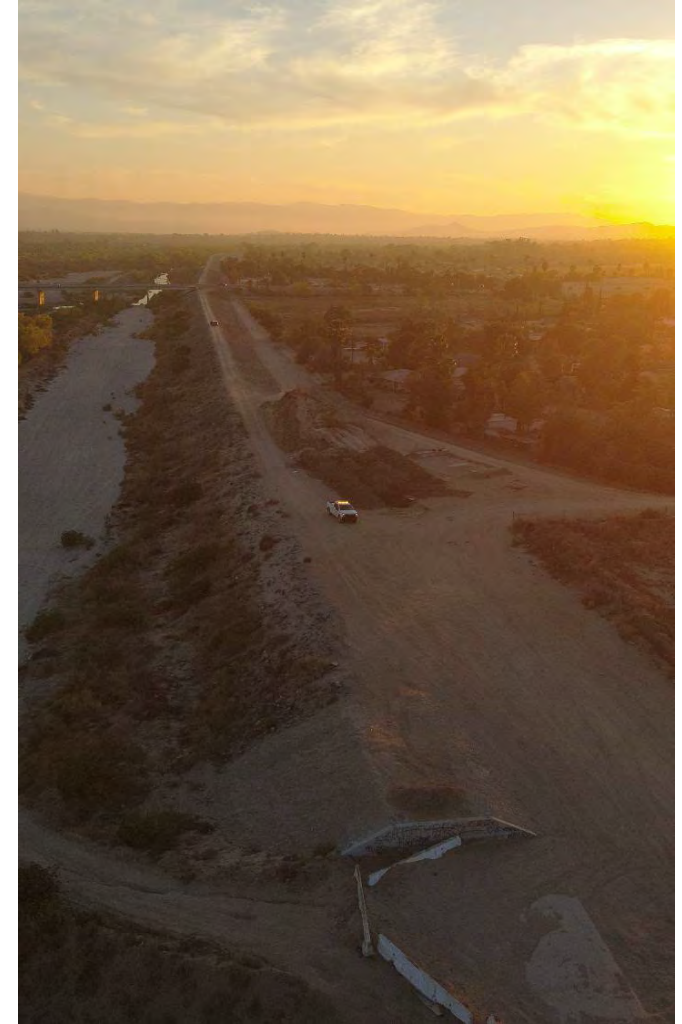
---



# Staff Proposal and Funding Request

---

- Staff Proposal: SAWPA member agencies would jointly fund one or two additional ranger positions to assist in the patrol of this area.
- The estimated cost is approximately \$180,000 annually per ranger, to be shared equally among the five member agencies (approximately \$36,000).
  - This new cost is not included in the adopted FYE 2026 and FYE 2027 budgets. Additional research and justification can be provided by SAWPA staff if directed.
- Alignment to member agency and SAWPA activities: Arundo Donax, adjacent areas near Habitat Conservation Plan permitted project mitigation, Santa Ana River Trail, and U.S. Geological Survey Stream Gage (at the Metropolitan Water District River crossing).

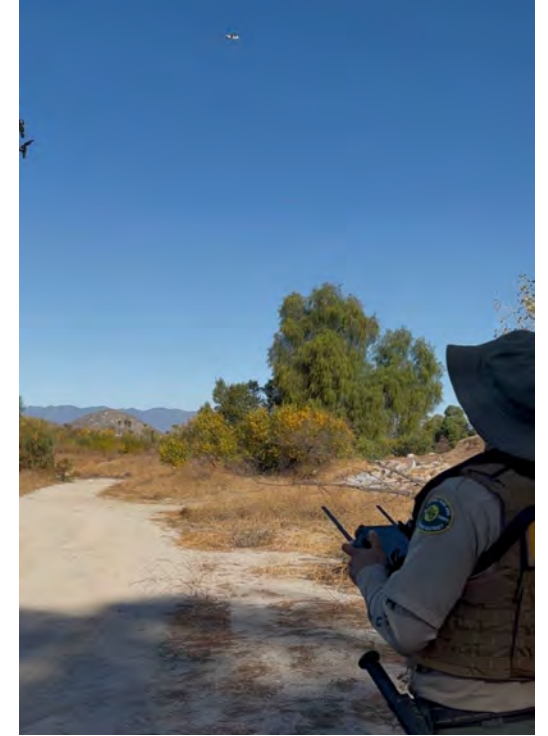




# About Riverside County Parks

---

- Operates as a County agency reporting to the Riverside County Board of Supervisors.
- The agency is responsible for managing public recreation sites and open-space areas and oversees a total of 59,521 acres of open space across Riverside County, including portions of the Santa Ana River.
- The areas they manage in the Santa Ana River are owned by the County, the State or other entities.
- The areas they manage include approximately eight miles of open space that include the perennially flowing Santa Ana River.



# SBVMWD Partnership

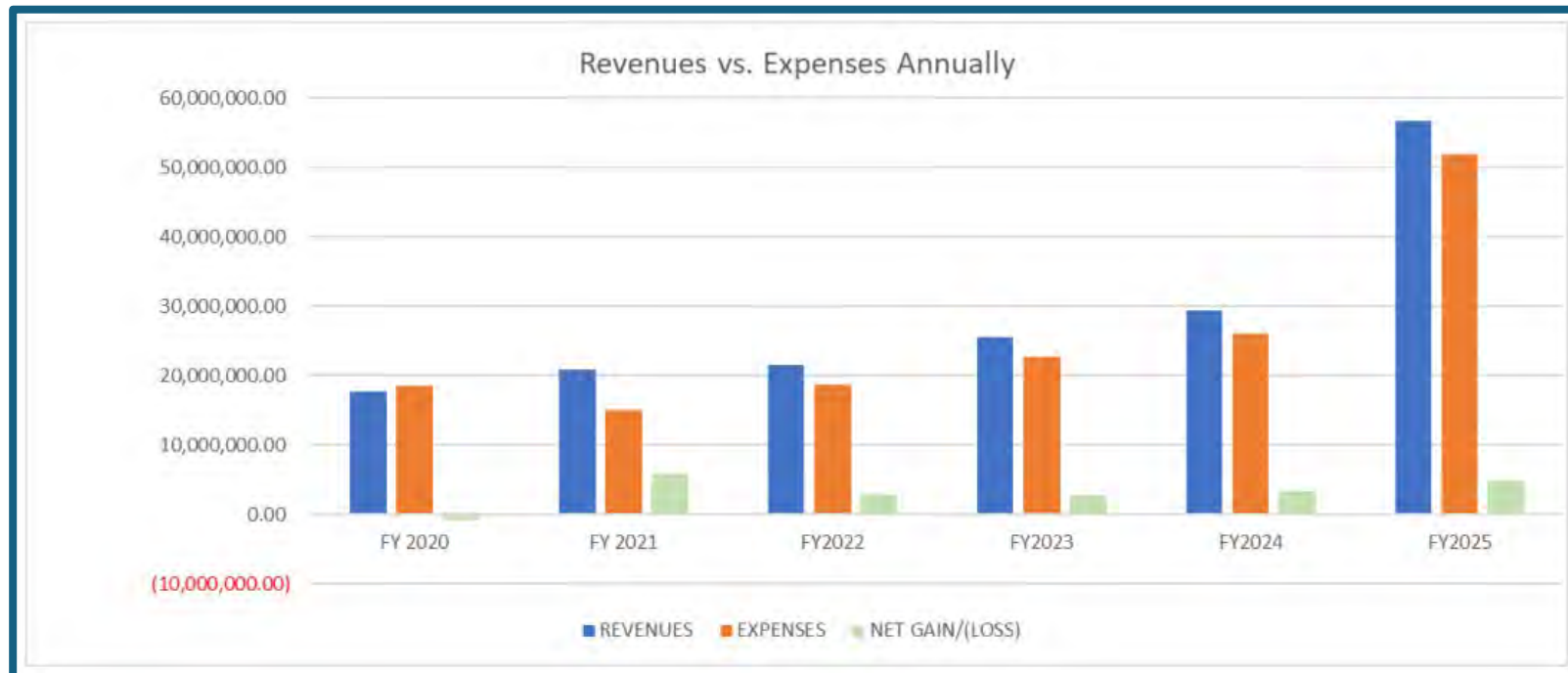
- During the COVID-19 pandemic, RivCo Parks had to reduce staff and almost removed the single Ranger position designated to patrol the Santa Ana River eight-mile area.
- SBVMWD, who manages habitat improvement mitigation in this portion of the River, began providing funding to ensure continuation of patrols.
- The SBVMWD board recently approved increasing the contribution to RivCo Parks to include:

Position	Amount	Hourly Rate	Annual Cost
Rangers	4.0 Full Time Equivalent (FTE)	\$96	\$798,720
Maintenance Worker	1.0 FTE	\$90	\$187,200
Manager	0.1 FTE	\$154	\$32,032
Total (Annual)	5.1 FTE	N/A	\$1,017,952

Note: SBVMWD plans to provide this funding through a three-year contract.

# RivCo Parks Existing Budgets

- Funding for open-space management is limited to a small portion of the overall budget. Increasing fees or property taxes would take from other portions of the County.
- Net gains in revenue go to replenishing reserve funds, which need to grow to improve the ability for the District to respond to emergencies.





# Staff Proposal

## Two Options for Funding

---

Staff Proposed Options	Amount	Hourly Rate	Annual Cost
1 Ranger	1 FTE	Yr 1: \$84 Yr 2: \$87 Yr 3: \$91  (4% annual increase)	2026 - Yr 1: \$174,720 2027 - Yr 2: \$181,709 2028 - Yr 3: \$188,977  Total 3 Years: \$545,406
2 Rangers	2 FTE	Yr 1: \$84 Yr 2: \$87 Yr 3: \$91  (4% annual increase)	2026 - Yr 1: \$349,440 2027 - Yr 2: \$363,418 2028 - Yr 3: \$377,954  Total 3 Years: \$1,090,812

# Member Agency Funding Options

Through a five-agency split, where each SAWPA member agency pays 20% of the costs.

	Option 1: 1 Ranger	Option 2: 2 Rangers
<b>All Member Agencies Total (3 Years)</b>	\$545,406	\$1,090,812
<b>Individual Member Agency Total (3 Years)</b>	\$109,081	\$218,162
<b>Individual Agency Year 1</b>	\$34,944	\$69,888
<b>Individual Agency Year 2</b>	\$36,342	\$72,684
<b>Individual Agency Year 3</b>	\$37,795	\$75,591

Both options are for three years of funding to ensure the construction and initial establishment of the mitigation bank projects are implemented (mirrors SBVMWD's approach).

# Work to be Performed Under Partnership

---

- Regular patrols by uniformed, clearly identified staff
- Site cleanup and homeless outreach
- Coordination with partner agencies (fire, police, outreach, animal control)
- Management of nonnative/invasive plants
- Security and field support for biologists
- Public outreach and communication with adjacent landowners
- SAWPA member agency funding will ensure there are no gaps in management of this 8-mile area.





# Benefits to SAWPA Member Agencies

---



## **Arundo Donax Management**

Preserves restored areas where Arundo has been removed, supporting native habitat and water savings in the Santa Ana River.



## **Habitat Conservation Plan Support**

Four member agencies have projects listed as “covered activities” under the Upper Santa Ana River Watershed Habitat Conservation Plan, with SBVMWD-led mitigation in various areas along the 8-mile area.



## **Santa Ana River Trail**

Supports safety and stewardship along the Trail; SAWPA has participated in the Trail’s Policy Group since 2004.



## **U.S. Geological Survey Stream Gage**

Ensures protection of infrastructure critical for SAR Watermaster and Basin Monitoring Task Force monitoring.

# Recommendation

---

That the SAWPA Commission discuss and consider funding one or two RivCo Parks Ranger positions for a period of three years, with costs shared equally among the five member agencies.





# Contact Information

---

**Ian Achimore**

*Interim Planning Department Manager*

SAWPA

[ian@sawpa.gov](mailto:ian@sawpa.gov)





SANTA ANA WATERSHED  
PROJECT AUTHORITY

# SAWPA Strategic Plan RFP

Commission Meeting  
Karen Williams  
General Manager  
October 7, 2025

# Recommendation

---

That the Commission authorize staff to issue a Request for Proposal (RFP) for Strategic Plan Development.

# Background

---

- SAWPA last adopted a strategic plan in 2011, and it was updated in 2016
- Significant changes since then:
  - New Commission leadership
  - Evolving water management challenges and regional priorities
- Need: a comprehensive redevelopment of the Strategic Plan, not just an update



# Purpose of the RFP

- Engage member agencies, stakeholders, and staff to set shared goals
- Reaffirm or refine Mission, Vision, and Values
- Identify strategic priorities, goals, and measurable outcomes
- Provide an actionable roadmap for SAWPA's three business lines

Inland Empire Brine Line

One Water One Watershed  
(OWOW)

Roundtables

# Scope of Work - Highlights

- 1. Project kickoff & workplan**
- 2. Situational analysis (SWOT, regional trends)**
- 3. Stakeholder engagement (Commission, GMs, staff, partners)**
- 4. Vision, Mission, Values review**
- 5. Strategic goal & priority setting**
- 6. Implementation & monitoring framework**
- 7. Draft & Final Plan preparation**

# Deliverables

- 1. Work plan & schedule**
- 2. Situational analysis report**
- 3. Engagement summary**
- 4. Draft/refined Vision, Mission, Values**
- 5. Draft strategic goal & objectives**
- 6. Implementation/monitoring framework**
- 7. Final Strategi Plan (PDF + editable)**
- 8. Presentation decks**



# Proposed Schedule

---

- RFP Issuance: **October 7, 2025**
- Questions due: **October 28**
- Responses due: **November 17**
- Interviews (if needed): **December 1**
- **Commission award consideration: December 16**

# Evaluation Criteria

---

- Experience & qualifications
- Understanding of needs & approach
- Cost appropriateness
- Value & quality of proposed services

# Recommendation

---

That the Commission authorize staff to issue a Request for Proposal (RFP) for Strategic Plan Development.



# Questions?

# Thank You

---

Karen Williams  
Santa Ana Watershed Project Authority  
Office (951) 354-4231 | Cell (951) 707-5683  
kwilliams@sawpa.gov  
sawpa.gov





# **SAWPA 50<sup>th</sup> Anniversary** **Celebrating Five Decades of** **Watershed Collaboration**

---

**Karen Williams, General Manager**

*October 7, 2025*



# Purpose

---

- **Celebrate SAWPA's 50-year legacy**
- **Honor key achievements**
- **Share a vision for the future**

# Key Components

---

- **Commemorative Book & E-Book (history, timeline, photos)**
- **Anniversary Video (10-15 min, archival & interviews)**
- **Luncheon Event (video premier, book distribution)**
- **SAWPA 50<sup>th</sup> Anniversary Logo**
- **Other celebration ideas (plaque, outreach)**



# Commemorative Book

---

- **Chapter 1 – Foreward & Dedication**
- **Chapter 2 – Timeline Overview**
- **Chapter 3 – Origins (1969 – 1970's)**
- **Chapter 4 – 1980s Building the Brine Line**
- **Chapter 5 – 1990s Partnerships & Innovation**
- **Chapter 6 – 2000s Securing Funding**
- **Chapter 7 – 2010s One Water One Watershed (OWOW)**
- **Chapter 8 – 2020s Resilience & the Future**
- **Chapter 9 - Voices of SAWPA**
- **Chapter 10 – Looking Ahead**

# Anniversary Video

---

- **Opening**
- **1969 – 1970s The Beginning (Segment 1)**
- **1980s Building Critical Infrastructure (Segment 2)**
- **1990s Regional Partnerships & Water Quality (Segment 3)**
- **2000s Securing Funding & Integrated Planning (Segment 4)**
- **2010s One Water, One Watershed (OWOW) (Segment 5)**
- **2020s Resilience and the Next 50 Years (Segment 6)**
- **Closing**



# **Luncheon & Celebration**

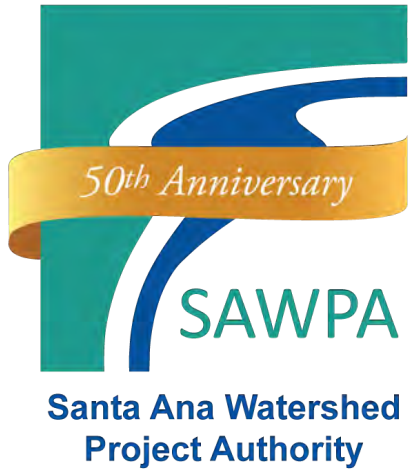
---

- **Audience: Commissioners, member agencies, stakeholders**
- **Possible venues and event elements**

# 50<sup>th</sup> Anniversary Logo

---

A



C



B



D



# Proposed Timeline

Milestone	Target Date
Commission direction on concept	October 2025
Finalize book/video content & vendors	October 2025
Production and design	October – December
Printing and video completion	November – December
Luncheon and public release	December or January

# Budget & Next Steps

---

- **Vendor selection & cost estimates forthcoming**
- **Staff requests Commission direction to proceed**



# Call to Action

---

- **Commission Direction Requested**
  - **Approve concept**
  - **Authorize staff to develop detailed budget and schedule**

# 50<sup>TH</sup> ANNIVERSARY SAWPA

A stylized graphic in dark blue depicting a winding river or path that flows between two mountain peaks. The mountains are represented by simple, rounded shapes, and the path is a continuous line that meanders through the center.

# Questions

---

**Karen Williams**  
*General Manager*

**[kwilliams@sawpa.gov](mailto:kwilliams@sawpa.gov)**