



SANTA ANA WATERSHED
PROJECT AUTHORITY

Inland Empire Brine Line Activities

PA 24 Committee
Agenda Item No. 6.A
David Ruhl

Executive Manager of Engineering and Operations
September 2, 2025

SCADA Work Plan and Design

Project Description

- SCADA System (Real-time flow and quality data collection) to provide remote, automated flow and water quality data collection
- Data collection and transmittal devices installed at each discharger location and at each in-line flow monitoring location

Current Activities

- Kick – off meeting in June 2025
- Coordination with Member Agencies and dischargers
- Data gathering and discharger site visits



Pretreatment Program Document Management System (DMS)

- Support for current DMS Software (iPACs) will end December 2025
- A reliable DMS is necessary for administering SAWPA's Pretreatment Program
- Work will commence on replacing the DMS software in September 2025 and be in place prior to December 2025

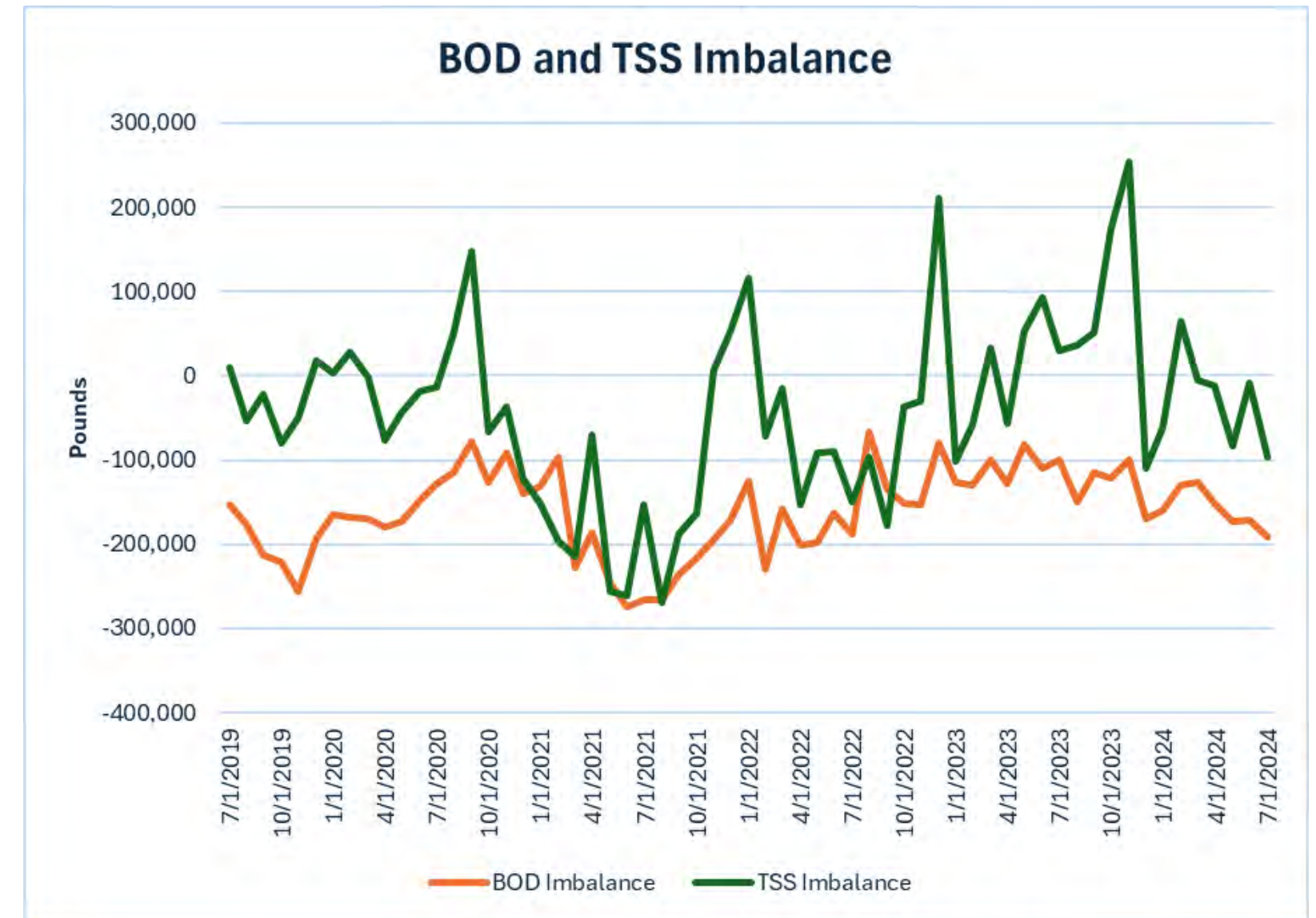
Brine Line Solids Imbalance and Billing Formula Update

Study Description

- Evaluate the nature and extent of suspended solids formation in the Brine Line
- Review and update the billing formula if necessary

Activities

- Review last five years of water quality data from all dischargers and SARI Metering station - complete
- Develop sampling plan - complete
- SAWPA and Member Agency Pretreatment staff conducted targeted monitoring April – July
- Data evaluation August - October



Pretreatment Program Reporting

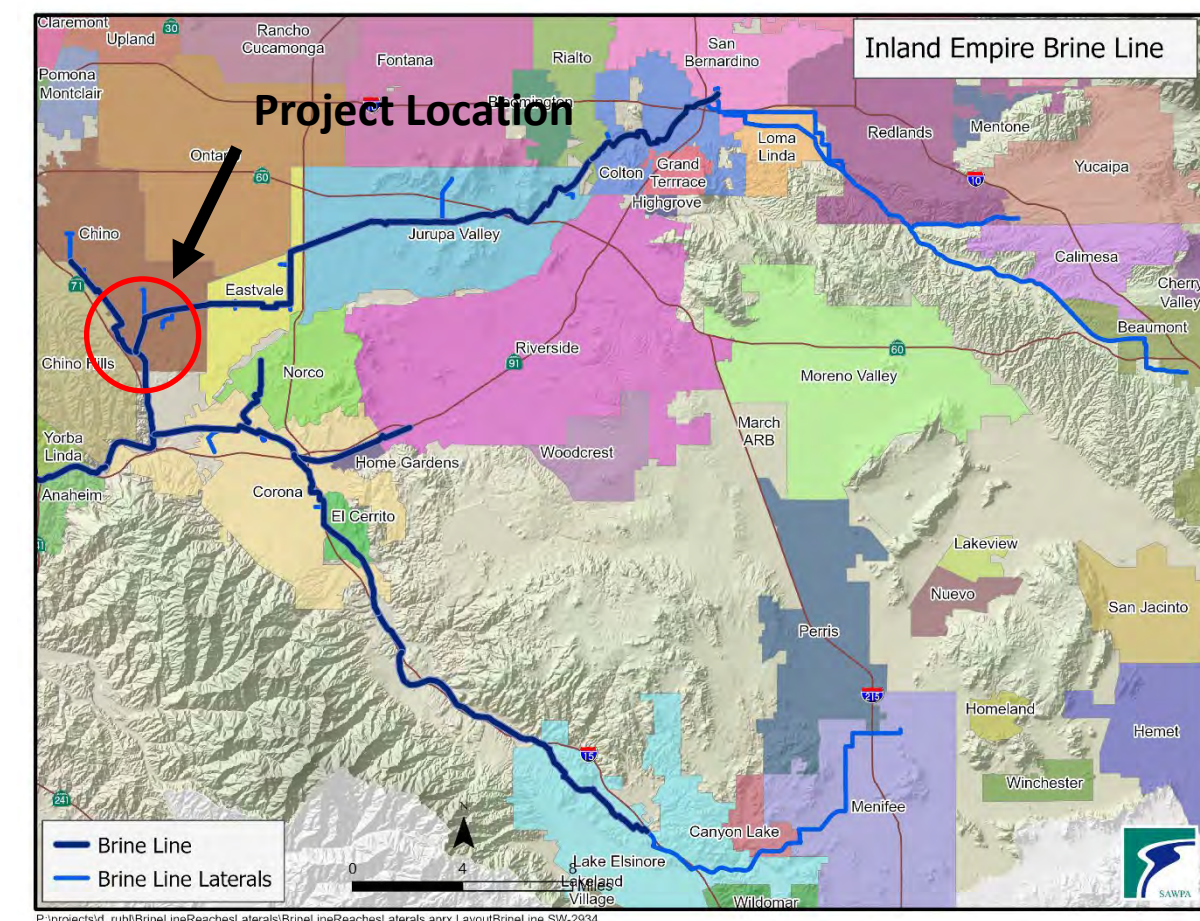
- Fiscal Year 2024 – 25 Annual Report to OC San
 - Summarizes all pretreatment program activities (Inspections, enforcements, monitoring results)

Monitoring and Inspections	Number
Sampling Events	412
Parameters Sampled	310
Analytical Results	12,621
Inspections	200

Permits	Number
Direct	33
Indirect	16
Liquid Waste Hauler	8
Total	57

Euclid Bridge Project

- City of Chino is proposing to construct an elevated roadway along Euclid Avenue (State Hwy 83)
- Maintain access during flood events
- Potential impact to Reach IV-A and IV-D
- Explore cost share opportunities with City of Chino to maintain access and structural integrity of Brine Line



OC San / SAWPA Joint Policy Committee

- JPC met on June 30, 2025 at OC San
- Committee Members
 - Commissioner Milford Harrison, SAWPA
 - Commissioner Philip Paule, SAWPA
 - Director Ryan Gallagher, OC San
 - Director Jon Dumitru, OC San
 - Director Pat Burns (Alt.), OC San
- Discussion items included SAWPA's Wastewater Ordinance, Emergency preparedness, OC San biosolids and Ocean outfall use.

Recommendation

Receive and file.

Questions?

Thank You

David Ruhl
Santa Ana Watershed Project Authority
Office (951) 354-4220
druhl@sawpa.gov
sawpa.gov





SANTA ANA WATERSHED
PROJECT AUTHORITY

Inland Empire Brine 10 – year CIP

PA 24 Committee
Agenda Item No. 6.B
David Ruhl

Executive Manager of Engineering and Operations
September 2, 2025

Capital Improvement Plan

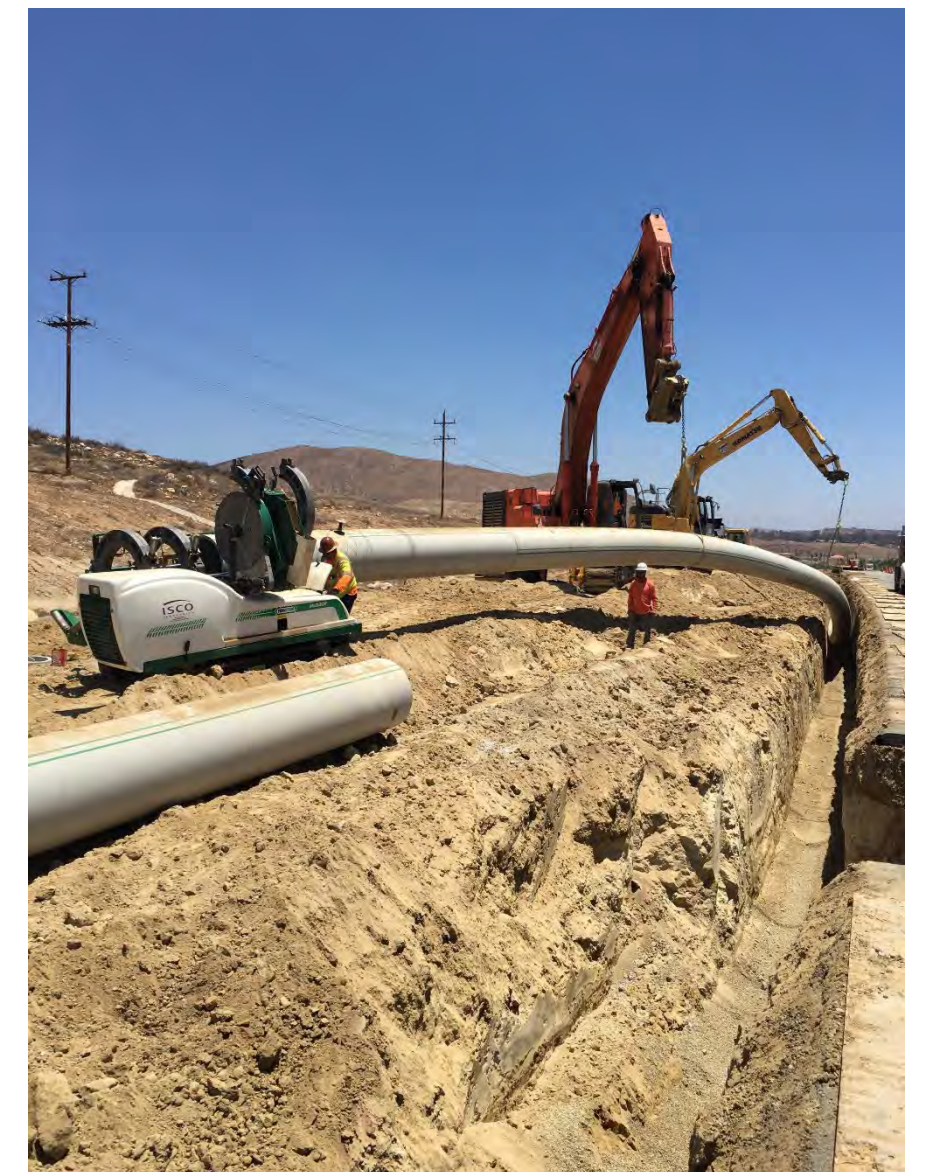
- Assure the long-term future viability and sustainability of the Brine Line
- \$69 million over 10 years (year 2035)
- Includes recommended improvement projects from the Final Master Plan
- Organized into a 40 – year plan that corresponds to build-out of the Brine Line system (year 2065)
- Prioritized based on criticality and need



Reach IV-A and IV-B Rehabilitation Project

Capital Improvement Plan

- CIP addresses
 - Known system improvements
 - Reach V New MAS
 - Reach IV-B New MAS
 - Reach IV-E mainline valve
 - Known O&M challenges
 - Reach V Relocation of Air – Vacs
 - Prado Access Road Improvements
 - Protection from stormwater/erosion
 - On-going investigations to monitor system improvement and future needs
 - Reach IV-B DIP Corrosion
 - Reach IV-D Corrosion
 - Condition assessments (inspection, design, repair/rehabilitation)
 - System improvements identified in the Master Plan
 - MAS smart cover installation
 - SCADA system
 - Investigate off-line storage system



Reach V – Relocation and Improvement

Inland Empire Brine Line 10 - Year Capital Improvement Plan (CIP)

Year		1	2	3	4	5	6	7	8	9	10	11-25	26-40
ID#	Project	FY 2026	FY 2027	FY 2028	FY 2029	FY 2030	FY 2031	FY 2032	FY 2033	FY 2034	FY 2035	FY 2036 -50	FY 2051 - 65
FM-08	Reach IV Condition Assessment/Rehabilitation									\$1,109,057		\$15,024,303	
FM-09	Reach IV-A Upper Pine Ave Siphon	\$275,000											
FM-10	Reach IV-A & IV-B Prado Access Road Improvements			\$109,273	\$112,551	\$2,898,185							
FM-11	Reach IV-B DIP Section New MAS Structures	\$450,000											
FM-12	Reach IV-B DIP Rehabilitation				\$4,141,872							\$13,102,038	
FM-13	Reach IV-B Condition Assessment / Repairs		\$350,000	\$464,409				\$1,045,393				\$58,458,770	
FM-14	Reach IV-B Alcoa Dike Protection (Raise 2 MAS)	\$25,000	\$25,000										
FM-15	Reach IV-D Corrosion Rehabilitation								\$1,138,826	\$17,836,445	\$18,371,538		
FM-16	Reach IV-D Euclid Bridge Project	\$100,000	\$2,200,000										
FM-17	Reach IV-D Condition Assessment/Rehabilitation						\$746,283	\$768,671	\$791,731				
FM-18	Reach IV-D Mission Tunnel			\$191,227									
FM-19	Reach IV-D Prado (below 566' Elevation) MAS Protection	\$250,000	\$280,000										
FM-20	Reach IV-E Siphon Mainline Valve		\$420,000	\$327,818									
FM-21	Reach IV-E Condition Assessment / Repairs		\$400,000	\$200,000								\$1,069,321	
FM-22	Reach V MAS Condition Assessment						\$686,580		\$2,533,540	\$2,609,546	\$2,687,833		
FM-23	Reach V - Temescal Canyon Rd Widening	\$50,000	\$50,000										
FM-24	Reach V Air Vac Modifications					\$521,673						\$701,085	
FM-25	Reach V Indian Truck Trail Protection							\$707,177					
FM-26	Reach V Baker St Protection									\$52,191	\$1,343,916		
FM-27	Capital Repairs (Protection from stormwater/erosion)	\$575,000	\$575,000										
CAP-01	SCADA System	\$800,000	\$400,000										
CAP-02	Smart MAS Cover Installation					\$99,698	\$102,688						
CAP-03	Capacity Management					\$376,764							\$27,000,000
CAP-04	IV-A Lower (Prado) Relocation											32,761,536	\$35,594,225
CAP-05	Off-line Storage System												\$55,000,000
CAP-06	Reach IV-D Parallel Line D1												\$4,825,000
CAP-07	Reach IV-D Parallel Line D2												\$19,520,000
Fiscal Year Total		\$2,525,000	\$4,700,000	\$1,292,727	\$4,254,423	\$3,896,320	\$1,535,551	\$2,521,241	\$4,464,098	\$21,607,240	\$22,403,288	\$121,117,053	\$141,939,225
Cumulative Total		\$2,525,000	\$7,225,000	\$8,517,727	\$12,772,150	\$16,668,470	\$18,204,022	\$20,725,263	\$25,189,361	\$46,796,601	\$69,199,888	\$190,316,941	\$332,256,166

Note: CIP projects adjusted for inflation at 3% per year.

Recommendation

- Receive and file

Questions?