



SANTA ANA WATERSHED
PROJECT AUTHORITY

Inland Empire Brine Line Rate Resolution 2025-2

Commission Meeting

Agenda Item No. 6.A

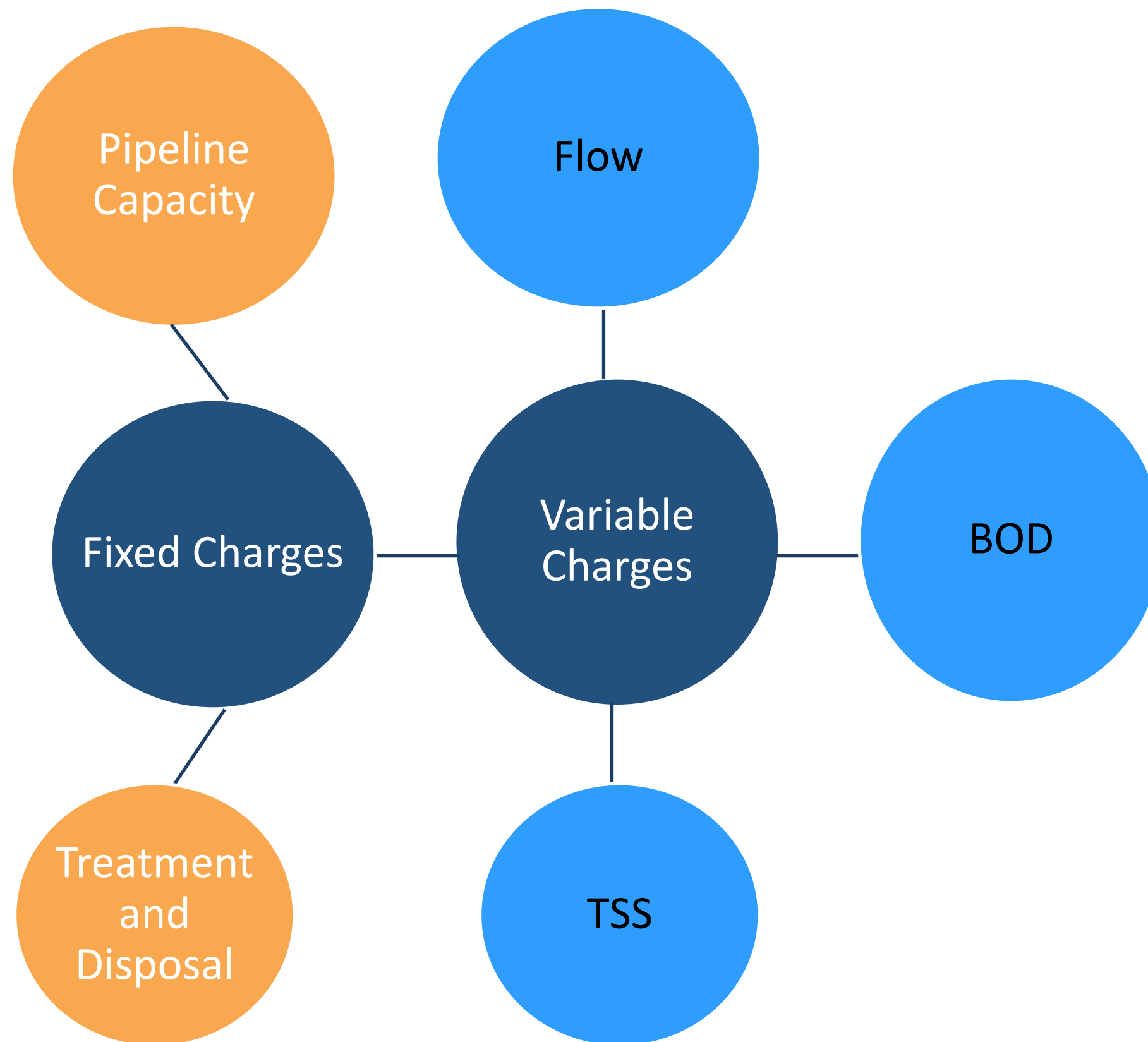
David Ruhl

Executive Manager of Engineering and Operations

May 20, 2025

Recommendation

- Adopt Resolution No. 2025-2 establishing the Fiscal Year 2025-26 Inland Empire Brine Line Rates to be effective July 1, 2025.



Brine Line Rate Components:

- Flow
 - Per Million Gallons
- Biochemical Oxygen Demand (BOD)
 - Per 1,000 lbs
- Total Suspended Solids (TSS)
 - Per 1,000 lbs
- Fixed Charges for Pipeline and Treatment and Disposal Capacity Owned
 - Per Million Gallons/Day

Brine Line Rates Direct Dischargers (FY 2025-26)

Options	Effective Date	Flow MG	BOD (1) 1,000 lbs	TSS (1) 1,000 lbs	Fixed Pipe	Fixed T&D
Current FY 2024-25	-	1,097	396	497	6,654	13,505
Proposed FY 2025-26	7/1/2025	1,119	416	522	6,787	13,775

(1) BOD and TSS is a “pass through” cost from OC San.

Brine Line Rates FY 2020 – FY 2027

Fiscal Year	Flow (MG)	BOD (1,000 lbs)	TSS (1,000 lbs)	Monthly Fixed Pipeline	Monthly Fixed Treatment
2027 Planned	\$1,141	\$437	\$548	\$6,923	\$14,051
2026 Proposed	1,119	416	522	6,678	13,775
2025 Current	1,097	396	497	6,654	13,505
2024	1,073	394	494	6,654	13,505
2023	1,049	353	520	6,654	13,505
2022	1,018	329	460	6,654	13,505
2021 Jan - Jun	1,018	329	460	6,654	13,505
2021 Jul – Dec	979	316	442	6,398	12,985
2020	979	316	442	6,398	12,985

Brine Line Rates % Change (+/-) FY 2020 – FY 2027

Fiscal Year	Flow MG	BOD (1,000 lbs)	TSS (1,000 lbs)	Monthly Fixed Pipeline	Monthly Fixed Treatment
2027 Planned	2.0%	5.0%	5.0%	2.0%	2.0%
2026 Proposed	2.0%	5.1%	5.0%	2.0%	2.0%
2025 Current	2.2%	0.5%	0.6%	0.0%	0.0%
2024	2.3%	11.6%	-5.0%	0.0%	0.0%
2023	3.0%	7.3%	13.0%	0.0%	0.0%
2022	0.0%	0.0%	0.0%	0.0%	0.0%
2021 Jan – Jun	4.0%	4.1%	4.1%	4.0%	4.0%
2021 Jul – Dec	0.0%	0.0%	0.0%	0.0%	0.0%
2020	3.5%	2.9%	3.0%	2.9%	3.0%

Indirect Dischargers

- Based on two (2) tiers:
 - Brine (<100 mg/L of both BOD or TSS)
 - Non-Brine (≥ 100 mg/L of either BOD or TSS)
 - Charges based on a per gallon base for brine tier and a per gallon base plus pounds of BOD and pounds of TSS for non-brine tier.

Indirect Discharger Rates

Option	Brine Tier ^(a) (< 100 mg/L) / gallon	Non-Brine Tier ^{(b)(c)} (≥ 100 mg/L) / gallon	BOD / lb	TSS / lb
Current (FY2024-25)	\$0.0164	\$0.0164	\$0.7995	\$0.7636
Proposed (FY2025-26) ^(d)	\$0.0168	\$0.0168	\$0.8187	\$0.7819

- (a) Brine tier if both BOD and TSS concentrations are less than 100 mg/L.
- (b) Non-brine tier if any of the BOD or TSS concentrations are 100 mg/L or greater.
- (c) Non-brine tier charges the flow component plus any pounds of BOD and TSS.
- (d) These charges will increase 2.4% from FY 2024-25.

Capacity Lease Rates

Lease Option	Flow ^(a) (per gallon)	Additional BOD ^(b) (per lb)	Additional TSS ^(b) (per lb)
Current (FY 2024 – 25)			
Pipeline and Treatment & Disposal	\$0.00263	\$0.4080	\$0.2501
Treatment and Disposal Only	\$0.00117	\$0.4080	\$0.2501
Proposed (FY 2025 – 26)			
Pipeline and Treatment & Disposal	\$0.00268	\$0.4284	\$0.2626
Treatment and Disposal Only	\$0.00119	\$0.4284	\$0.2626

(a) Capacity Lease rates will increase 2.0% for discharges not exceeding 250 mg/L of BOD and 250 mg/L of TSS.

(b) Discharges exceeding 250 mg/L of BOD and 250 mg/L of TSS, the BOD and TSS surcharge rate will increase by 5%.

Treatment & Disposal Surcharge Rates

These rates apply to dischargers that exceed their contractually owned capacity in any given month.

Option	Flow (per gallon)	BOD (per lb)	TSS (per lb)
Current (FY 2024-25)	\$0.0021	\$0.4080	\$0.2501
Proposed (FY 2025-26) ^(a)	\$0.0022	\$0.4284	\$0.2626

(a) These charges will increase 4.8% for flow and 5.0% for BOD and TSS.

Proposed Permit Fees

Type of Permit	Current Fee (FY 2024-25) and Proposed Fee (FY 2025-26)
Direct Discharger	\$600
Indirect Discharger	\$300
Connection Authorization	\$1,100
Liquid Waste Hauler	\$250

Recommendation

- Adopt Resolution No. 2025-2 establishing the Fiscal Year 2025-26 Inland Empire Brine Line Rates to be effective July 1, 2025.

Questions?

Thank You

David P. Ruhl
Executive Manager of Engineering and Operations
Santa Ana Watershed Project Authority
Office (951) 354-4223 | Cell (951) 538-3250
druhl@sawpa.gov
sawpa.gov





SANTA ANA WATERSHED
PROJECT AUTHORITY

Change Order #1 for: Arundo Donax Removal in the Santa Ana River Basin Headwaters Project (SAWPA Task Order IERCD387-01)

Commission Meeting
Item No. 6.B

Ian Achimore, Interim Planning Department Manager
Santa Ana Watershed Project Authority

May 20, 2025

Recommendation

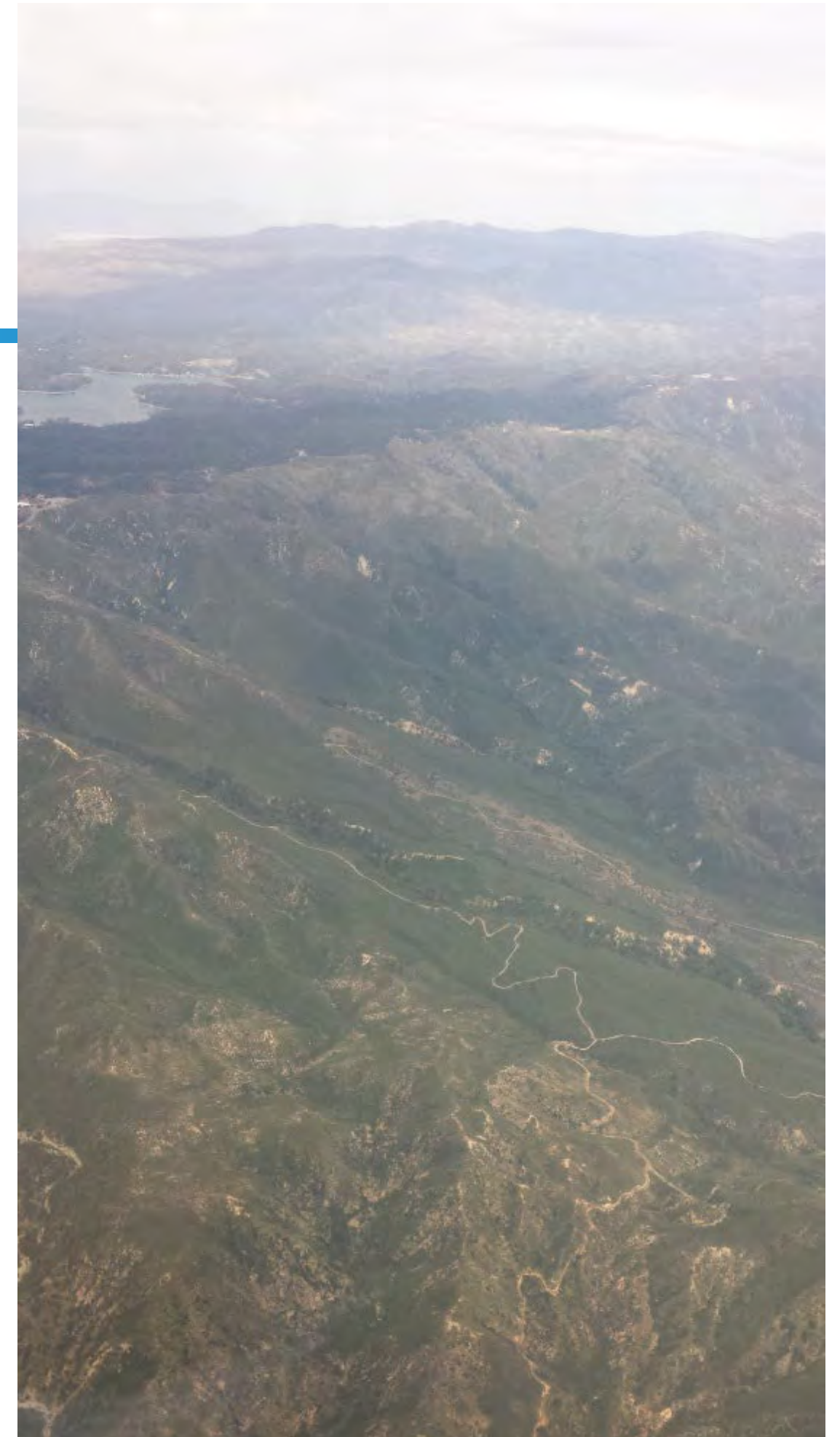
Approval of the following related to the Inland Empire Resource Conservation District (IERCD) and its *Arundo Donax Removal in the Santa Ana River Basin Headwaters Project*:

- Change Order No. 1 to Task Order IERCD387-01, which increases the Project budget from \$147,777 to \$616,045 (an increase of \$468,268).
- Re-adoption of the IERCD General Services Agreement to ensure it has a new deadline changed from December 31, 2027 to December 31, 2029.

Note: Consistent with IERCD Task Order, this Change Order conforms to SAWPA Resolution No. 427 that guides how funding from SAWPA Fund No. 387 is used.

Overview

- Current Project:
 - Arundo Donax Removal in the Santa Ana River Basin Headwaters Project (SAWPA Task Order IERCD387-01)
 - Partner: Inland Empire Resource Conservation District
- Purpose:
 - Review proposed Change Order from IERCD for additional Arundo removal
- Topics:
 - Watershed-wide occurrence
 - Project Details
 - Proposed Change Order
 - Scope
 - Budget
 - Schedule



Problematic Plant – *Arundo Donax*

Arundo donax, or giant reed

Invasive, non-native plant that provides no habitat benefit

Grows **4 inches per day** and up to a total height of **33 feet**

Highly flammable

Causes **flooding** by altering flow regimes

Consumes large volumes of water from **Santa Ana River Watershed** that could be used downstream



Arundo as a Watershed-Wide Issue



The invasive weed spreads as its rhizomes (subterranean stems) are uprooted and flow downstream in waterways.



Invasive weeds are largely managed through mitigation-related funding, conservancy organizations, and through property maintenance efforts.



SAWPA is using deep learning software to determine presence of Arundo (in acres) in the watershed.

Inland Empire Resource Conservation District (IERCD)

- One of four RCDs in the Santa Ana River Watershed (SARW)
- IERCD service area covers the upper SARW
- IERCD has a detailed invasive species removal plan
- IERCD staff are:
 - Highly experienced
 - Certified by CA Department of Pesticide Regulation for herbicide application



INLAND EMPIRE
RESOURCE CONSERVATION DISTRICT

Current Arundo Removal Project Summary

- Partner: Inland Empire Resource Conservation District (IERCD)
- Scope of Project:
 - Focus on headwaters
 - IERCD will acquire access, conduct surveys, and remove Arundo
 - Treatment locations will be monitored for the three years
 - Re-treatment applications will be conducted if necessary
 - As of April 2025, **375 stands** have been removed
- Commission approved:
 - 5-year IERCD Task Order on July 19, 2022
 - Budget (Period of Performance): \$147,777 (2022-2027)
 - Budget incurred: \$107,000 (~72%)
 - Source of Funding: SAWPA's Arundo Management and Habitat Restoration Project Fund No. 387



Example of Arundo Stands (Group of Canes)



Most stands encountered are composed of 5 to 20 canes/stalks. A larger stand has been 200 square meters of canes.

Need for Change Order

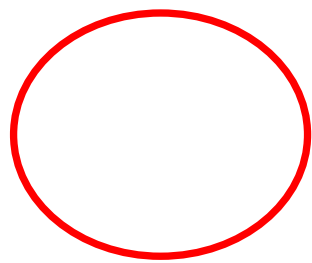
- Commission update on November 5, 2024:
 - More Arundo stands in the upper watershed's tributaries than known at the project start in 2022.
- IERCD/SAWPA reviewed additional Arundo survey information:
 - As a result, additional effort is needed to remove Arundo in upper watershed
 - Includes areas that "gaining access is difficult"
- Status of Arundo in Upper watershed:
 - A total of 1,291 stands have been inventoried
 - 375 stands have been treated
 - 916 stands remain to be treated



Surveyed Sites Map

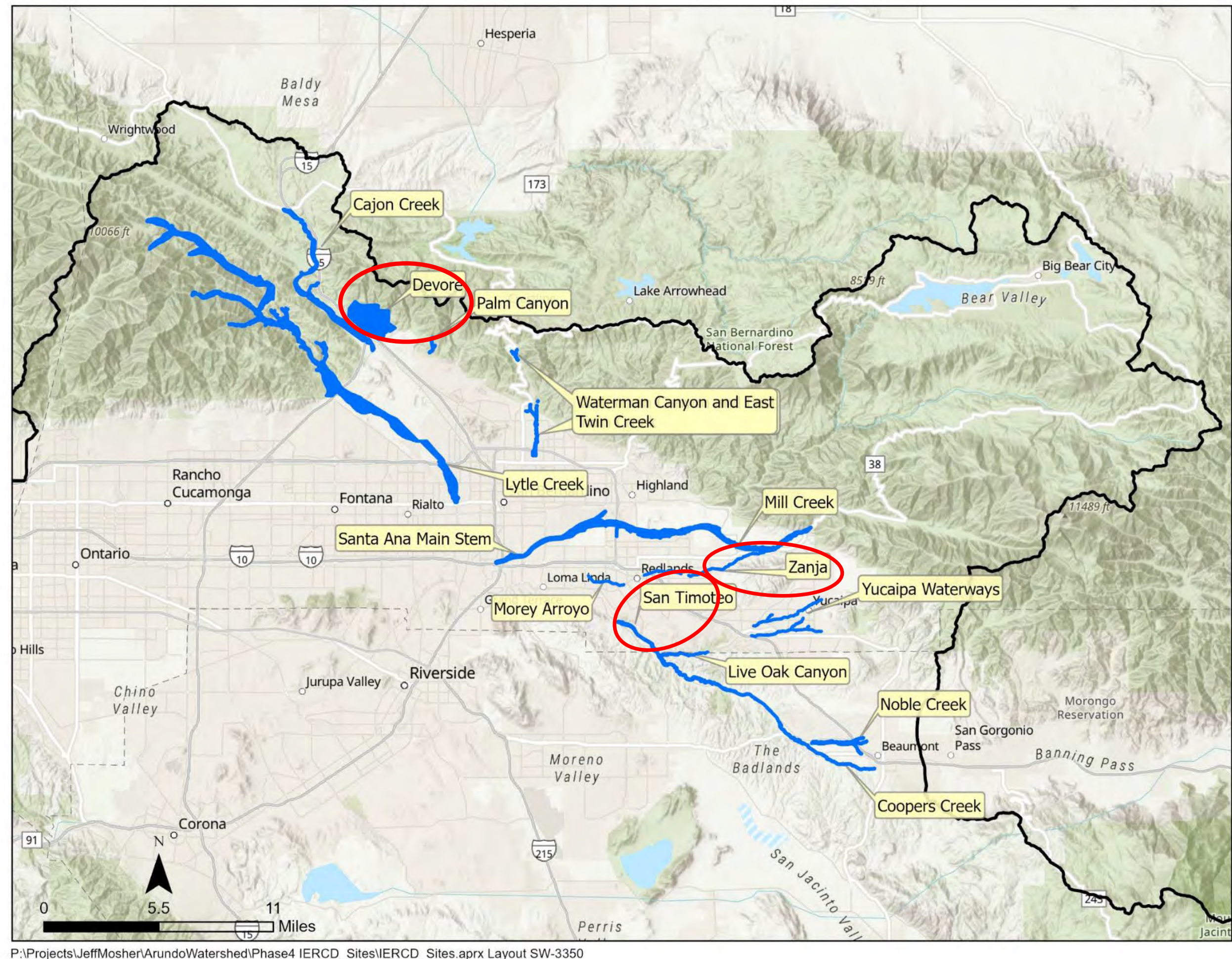
Note on Blue areas:

- These are areas surveyed by IERCD
- Do not contain continuous Arundo (just periodic plants)



Red Circles: Areas difficult to access:

- Devore
- Zanja
- San Timoteo



Tributary Name	Project Area (Acres)	Percent Ground Surveyed	Total Inventoried # of Stands	Inventoried-not treated # of Stands	Treated # of Stands	Percent Completion
Cajon Creek	876	90%	655	594	61	9%
Coopers Creek	74	100%	3	3	0	0%
Devore Community	1,426	90%	20	19	1	5%
Live Oak/Yucaipa Creek	31	99%	158	67	91	58%
Lytle Creek	4,361	10%	5	5	0	0%
Mill Creek	677	100%	27	12	15	56%
Morey Arroyo	9	100%	32	19	13	41%
Noble Creek	167	100%	3	3	0	0%
Palm Canyon	23	20%	2	2	0	0%
San Timoteo Canyon	350	96%	186	41	145	78%
Santa Ana River	1,973	50%	107	70	37	35%
Waterman Canyon and East Twin Creek	254	0%	63	63	0	0%
Yucaipa Waterways	42	100%	18	8	10	56%
Zanja	29	80%	12	10	2	17%
TOTAL	10,292		1,291	916	375	29%

Large amounts of additional stands found in these project sites:

Change Order Scope: Amount of Stands

- Updated acreage of the Project Sites
 - Site areas increased/decreased based on observed Arundo in the Project Area's creeks.
- Using the most recent data from IERCD (April 2025):
 - 375 stands of Arundo have been removed/treated
 - Additional Arundo stands have been identified
 - Total stands that need to be treated total is estimated at 916 (375 treated to date)

Note: Most stands encountered are composed of 5 to 20 canes/stalks. A larger stand of 200 square meters of canes has been identified.



Changes to Project Areas

Some Project Areas have increased in size, and some have decreased in size (based on occurrence of Arundo observed)

#	Project Site Name	Change Order Project Area (Acres)	Original Task Order Project Area	Change from Original
1	Cajon Creek	876	1,285	-409
2	Coopers Creek	74	108	-34
3	Devore Community	1,426	-	+1,426
4	Live Oak/Yucaipa Creek	31	44	-13
5	Lytle Creek	4,361	6,398	-2,037
6	Mill Creek	677	6	+671
7	Morey Arroyo	9	13	-4
8	Noble Creek	167	244	-77
9	Palm Canyon	23	33	-10
10	San Timoteo Canyon (All Sub-Watershed)	350	511	-161
11	Santa Ana River	1,973	1,217	+756
12	Waterman Canyon & East Twin Creek	254	206	+48
13	Yucaipa Waterways	42	61	-19
14	Zanja	29	42	-13
	TOTAL	10,292	10,168	+124

Changes to Number of Stands

Based on in the field observations:

- **1,291** stands have been inventoried
- **375** stands have been treated
- **916** stands remain to be treated

As a result:

- **29%** of stands have been treated
- **71%** of stands remain to be treated

#	Project Site Name	Total Inventoried Stands	Inventoried & Non-treated Stands	Treated Stands	Percent Completion
1	Cajon Creek	655	594	61	9%
2	Coopers Creek	3	3	0	0%
3	Devore Community	20	19	1	5%
4	Live Oak/Yucaipa Cree	158	67	91	58%
5	Lytle Creek	5	5	0	0%
6	Mill Creek	27	12	15	56%
7	Morey Arroyo	32	19	13	41%
8	Noble Creek	3	3	0	0%
9	Palm Canyon	2	2	0	0%
10	San Timoteo Canyon (All Sub-Watershed)	186	41	145	78%
11	Santa Ana River	107	70	37	35%
12	Waterman Canyon and East Twin Creek	63	63	0	0%
13	Yucaipa Waterways	18	8	10	56%
14	Zanja	12	10	2	17%
	TOTAL	1,291	916	375	29%

Change Order No. 1

Goal: Remove all inventoried Arundo from the Upper watershed

Summary of Change Order:

- 916 stands of Arundo inventoried will be removed or treated
- Additional budget of \$468,268
 - Source of Funding: SAWPA's Arundo Management and Habitat Restoration Project Fund No. 387 (funding from Mitigation Bank)
 - Current Balance: \$714,466 (as of February 28, 2025)
- Two-year extension: from December 2027 to December 2029



Change Order Includes Loma Linda Property

Project site was discussed during the November 5, 2024 Commission Project Update.

- Commission interested in removing Arundo at this property.
- Arundo destroying a shared fence.



Current Project Budget/Schedule Status

Item	Amount Incurred	% of Schedule/Budget Incurred
Schedule Implemented*	2.5 of 5.5 years <i>(2 Years Remaining)</i>	~45%
Budget Utilized	\$107,000 of \$147,777 <i>(\$40,777 Remaining)</i>	~72%

Task Order is funded using the Arundo Management & Habitat Restoration Project Fund No. 387. Fund balance as of February 28, 2025 is \$714,466. Fund gains revenue from credit sales from Santa Ana River Mitigation Bank (not grants or member agency dues).



*Task Order Term – July 2022 to December 2027 (5.5 years)

Proposed Project Budget (with Change Order No. 1)

Task	Task Description	Original Task Order	Change Order No. 1	Total
1	Access Agreements, Right of Entry, Encroachment	\$10,775	\$38,348	\$49,123
2	Surveying and Mapping	\$16,357	\$16,954	\$33,311
3	Invasive Species Removal, Herbicide Application, Retreatment, and Restoration	\$107,097	\$361,720	\$468,817
4	Admin - Environmental Review, Project Management, Administration, and Reporting	\$13,548	\$51,246	\$64,794
Totals		\$147,777	\$468,268	\$616,045

Recommendation

Approval of the following related to the Inland Empire Resource Conservation District (IERCD) and its *Arundo Donax Removal in the Santa Ana River Basin Headwaters Project*:

- Change Order No. 1 to Task Order IERCD387-01, which increases the Project budget from \$147,777 to \$616,045 (an increase of \$468,268).
- Re-adoption of the IERCD General Services Agreement to ensure it has a new deadline changed from December 31, 2027 to December 31, 2029.

Note: Consistent with IERCD Task Order, this Change Order conforms to SAWPA Resolution No. 427 that guides how funding from SAWPA Fund No. 387 is used.

Thank You

Ian Achimore
Santa Ana Watershed Project Authority
Office (951) 354-4220 | Direct (951) 354-4233
ian@sawpa.gov
sawpa.gov



Background Slides

Arundo Removal Funding Source*

- Prop 13 State Water Board grant
 - SAWPA purchased **100 credits** in **Riverside County Park's Santa Ana River Mitigation Bank**
 - Purchased in 2004
- When SAWPA's credits are sold by the Bank:
 - Riverside County Parks provides SAWPA with **funding for Arundo removal and maintenance projects** within the Watershed
 - That funding is held in Fund No. 387
 - SAWPA Resolution 427 (May 18, 2004) – governs the use of credit sales
 - SAWPA can identify, develop, and fund **targeted habitat restoration** projects within the Watershed
- Status of Credits:
 - ~52 credits sold between 2024 and 2015 (~48 remain)

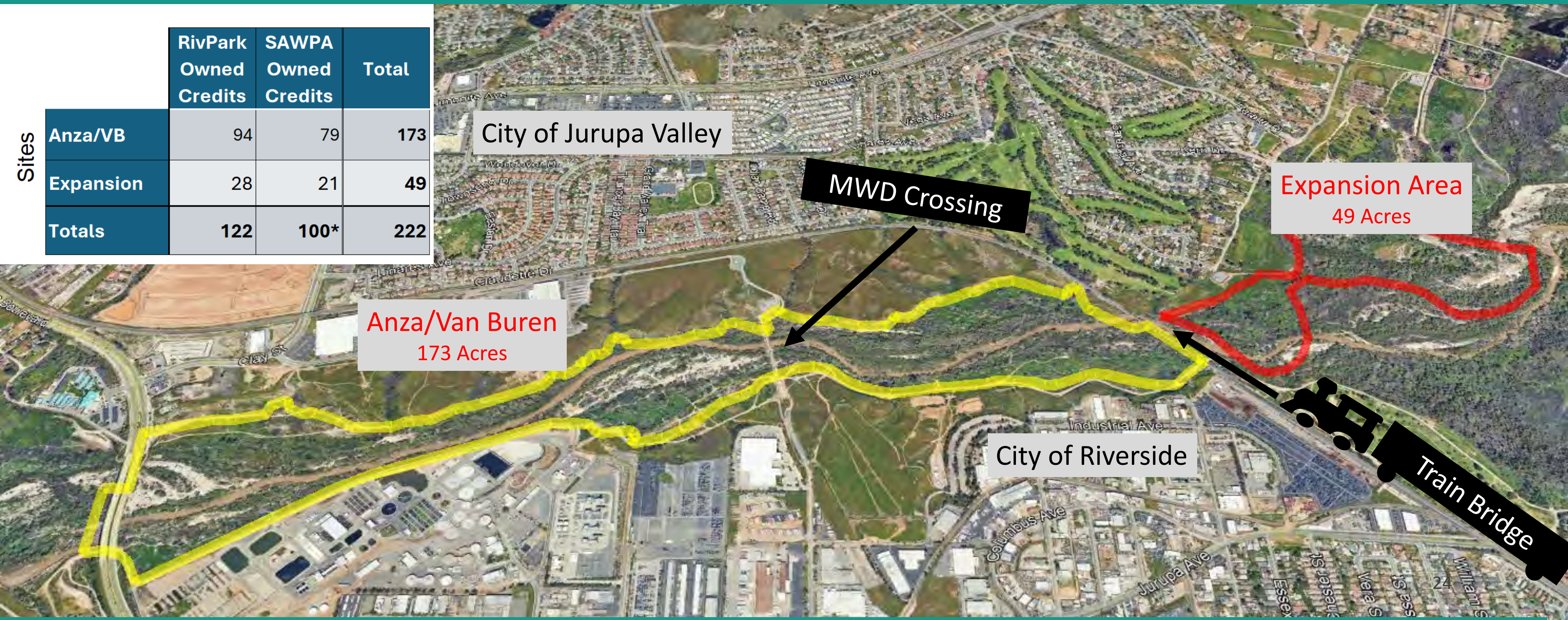


Current Status of Credit Funding

	Contract/Fund/Funding Source	Amount
Fund	Fund No. 387 Balance	\$714,466.13
Contract	Existing Obligations Under IERCD Existing Task Order	\$40,253.61
Contract	Change Order Amount (New Obligations)	\$468,268.00
Fund	Fund No. 387 Unobligated Balance with Task Order and Change Order	\$205,945.52
Funding Source	Value of Credits in Bank* (approximate)	\$2,040,000.00

	Fund	Amount
Fund	Fund No. 387 Unobligated Balance with Task Order and Change Order & Credits Sold (Value Realized)	\$2,245,945.52

Mitigation Bank Site in Santa Ana River



History of Credit/Acre Sales

Entity	Total Credits	Sold	Remaining	Notes
Riverside County Parks	122	94	28	• Purchased from 1998 to 2004
SAWPA	100	~52	~48	• 2004 to 2015