



SANTA ANA WATERSHED
PROJECT AUTHORITY

Middle Santa Ana River Pathogen TMDL Task Force Regulatory Support

Commission Meeting
Item No. 6.A
Rachel Gray
Water Resources and Planning Manager
April 15, 2025

Recommendation

It is recommended that the Commission authorize the General Manager to execute the following:

1. General Services Agreement with Kahn, Soares & Conway, LLP, and
2. Task Order KSC384-04 with Kahn, Soares & Conway, LLP for an amount not to exceed \$141,500, to provide strategic and regulatory support for the Middle Santa Ana River Pathogen TMDL Task Force for FY 2025-26 and FY 2026-27.

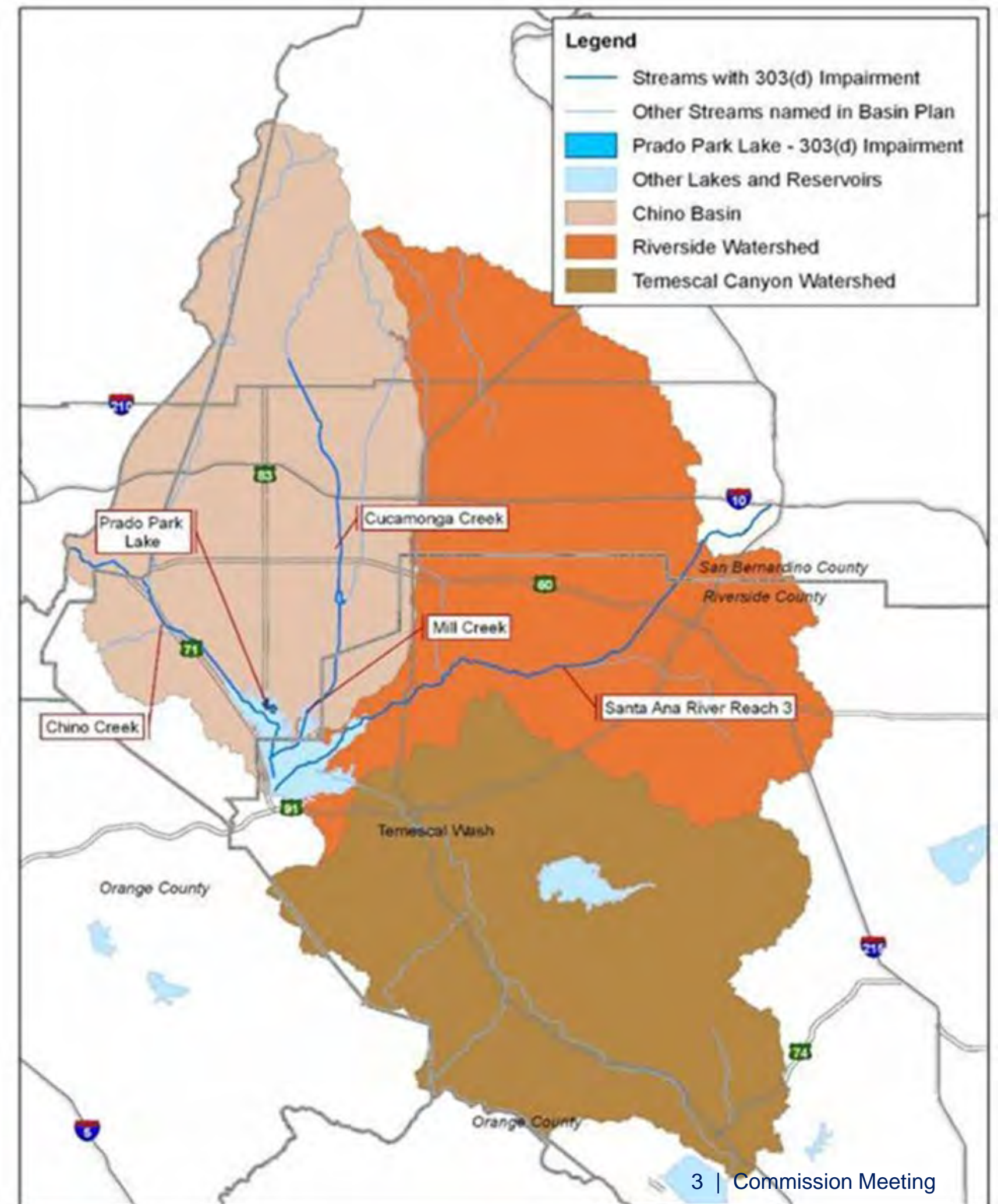
Middle Santa Ana River TMDLs

February 2005, Basin Plan amended to include Bacterial Indicator Total Maximum Daily Loads (TMDLs) for Middle Santa Ana River Waterbodies:

- Santa Ana River, Reach 3
- Chino Creek, Reaches 1 and 2
- Cucamonga Creek, Reach 1
- Mill Creek (Prado Area)
- Prado Park Lake

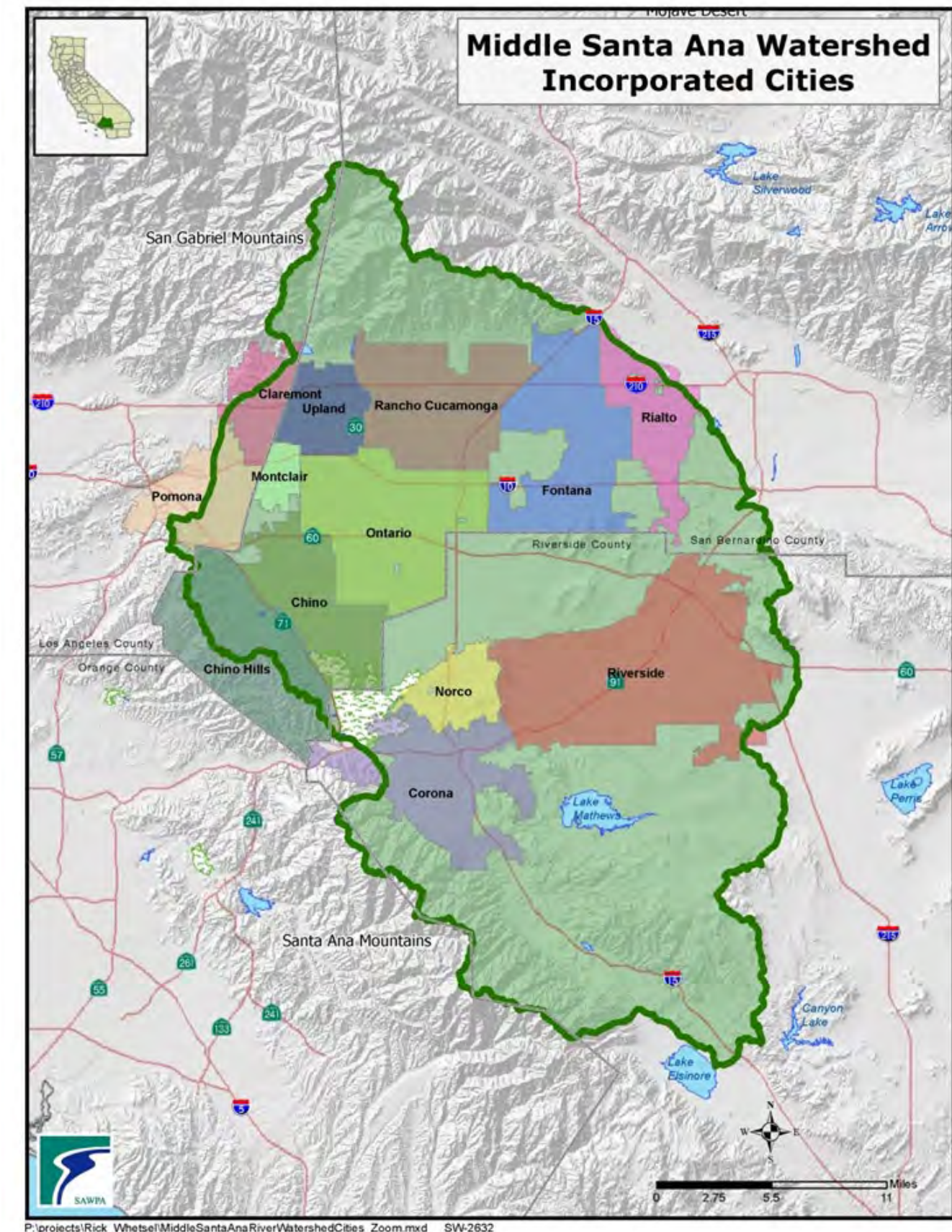
Current Activities:

- Middle Santa Ana River 2026 TMDLs Triennial Report (completed February 2026)
- Proposed Limited Basin Plan Amendment extending the wet weather implementation due date, currently set as December 31, 2025, out to December 31, 2035



Middle Santa Ana River Bacteria TMDL Task Force Members

- San Bernardino County Flood Control District representing the Cities of Chino, Chino Hills, Fontana, Montclair, Ontario, Rancho Cucamonga, Rialto, and Upland
- County of Riverside
- City of Claremont
- City of Corona
- City of Norco
- City of Pomona
- City of Riverside
- Agricultural Operators represented by Chino Basin Watermaster Agricultural Pool



Task Force Purpose

- Implements regulatory requirements of the Middle Santa Ana River Watershed bacteria indicator TMDLs (R8-2005-0001)
 - Investigate Long Term TMDL Implementation Structure, Cost Sharing Formula, and Funding Sources.
 - Implement, report and update a watershed-wide bacterial indicator water quality monitoring program.
 - Implement, report and update bacterial indicator urban source evaluation activities.



Regulatory Support Services

- Task Force is unanimous in support of Theresa (Tess) Dunham of Kahn Soares & Conway (KSC) of continued regulatory strategist/facilitator for the Middle Santa Ana River Pathogen Task Force.
- With continuing efforts to meet the regulatory requirements from the Santa Ana Regional Water Quality Control Board, the support of Ms. Dunham will be key for the successful approval of the MSAR TMDL Update and continuing the efforts of the Task Force.



Scope of Work

Regulatory Facilitation Scope of Work for FYs 2025-26 & 2026-27:

- Task Force Meeting Preparation and Participation;
- Preparation and participation with Santa Ana River Regional Bacteria Monitoring Program;
- Basin Plan Amendment – Wet Weather Time Schedule Extension;
- TMDL Incorporation and Implementation in Updated Permits; and
- Other Policies and Statewide Policy Efforts.

Recommendation

It is recommended that the Commission authorize the General Manager to execute the following:

1. General Services Agreement with Kahn, Soares & Conway, LLP, and
2. Task Order KSC384-04 with Kahn, Soares & Conway, LLP for an amount not to exceed \$141,500, to provide strategic and regulatory support for the Middle Santa Ana River Pathogen TMDL Task Force for FY 2025-26 and FY 2026-27.



Questions?

Thank You

Rachel Gray
Santa Ana Watershed Project Authority
Office (951) 354-4220 | Direct (951) 354-4242
rgray@sawpa.gov
sawpa.gov





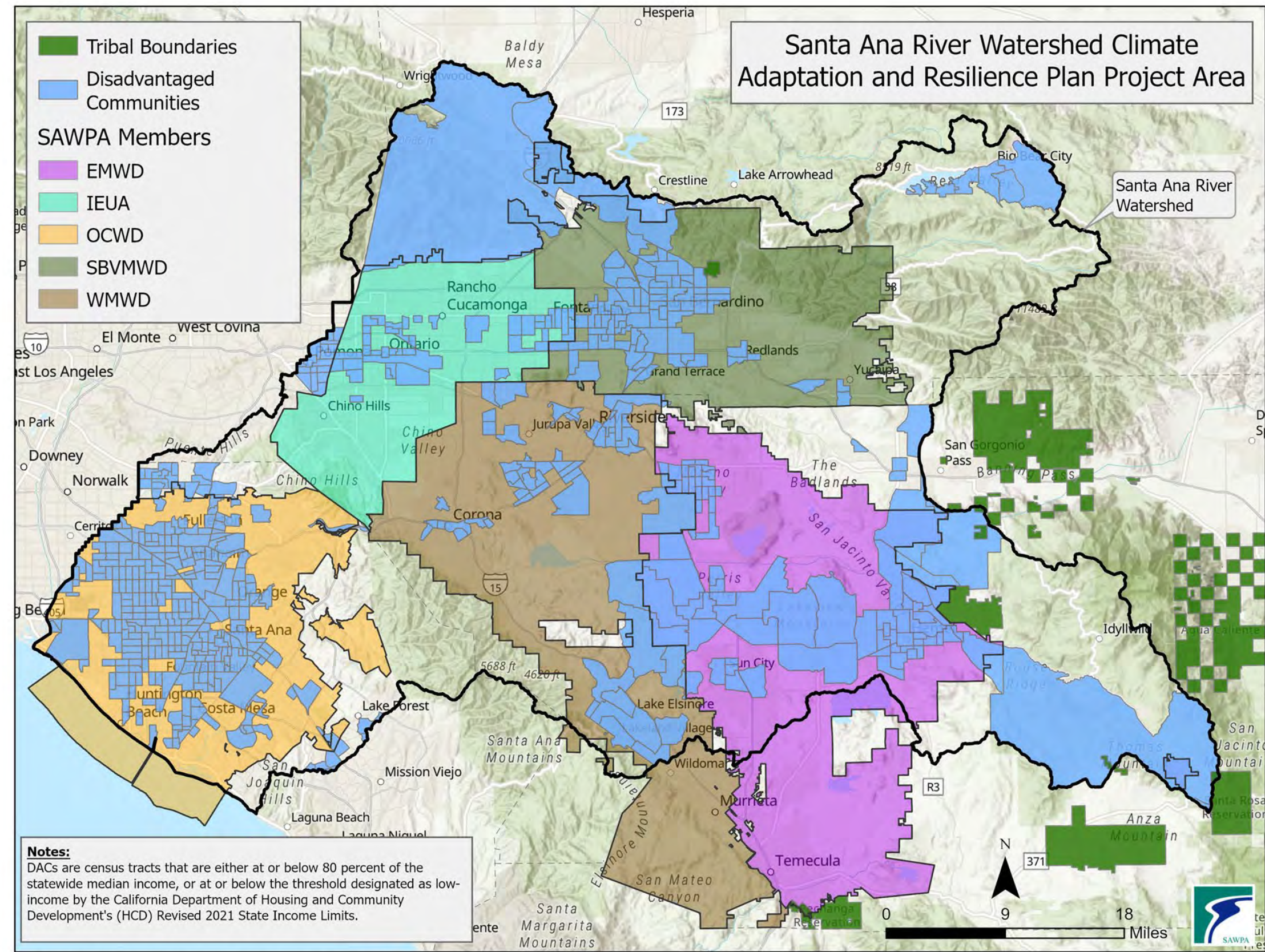
SANTA ANA WATERSHED
PROJECT AUTHORITY

Santa Ana River Watershed Climate Adaptation and Resilience Plan

Commission Meeting
Item No. 6.B
Haley Gohari
Associate Project Manager
April 15, 2025

Overview

- Climate Adaptation and Resiliency Plan (CARP) Grant
 - Consultant Support (includes Public Agency Engagement)
 - Tribal Engagement
 - Community Engagement
- Member Agency Involvement



P:\Projects\RachelGray\DACTribeMA\DACTribeMA.aprx LoDACTribe SW-3331

Key Strategies of the CARP

1. Facilitating a holistic yet streamlined planning process:

- Emphasize both technical analysis and effective engagement.
- Align stakeholder interactions with key deliverables.

2. Getting meaningful input through effective engagement:

- Develop tailored engagement plans for different stakeholder groups.
- Use digital tools like online surveys and virtual workshops.

3. Integrating existing data and new input to advance regional resilience:

- Leverage previous technical work and regional planning studies.
- Focus on prioritizing risks and vulnerabilities using input from diverse communities.

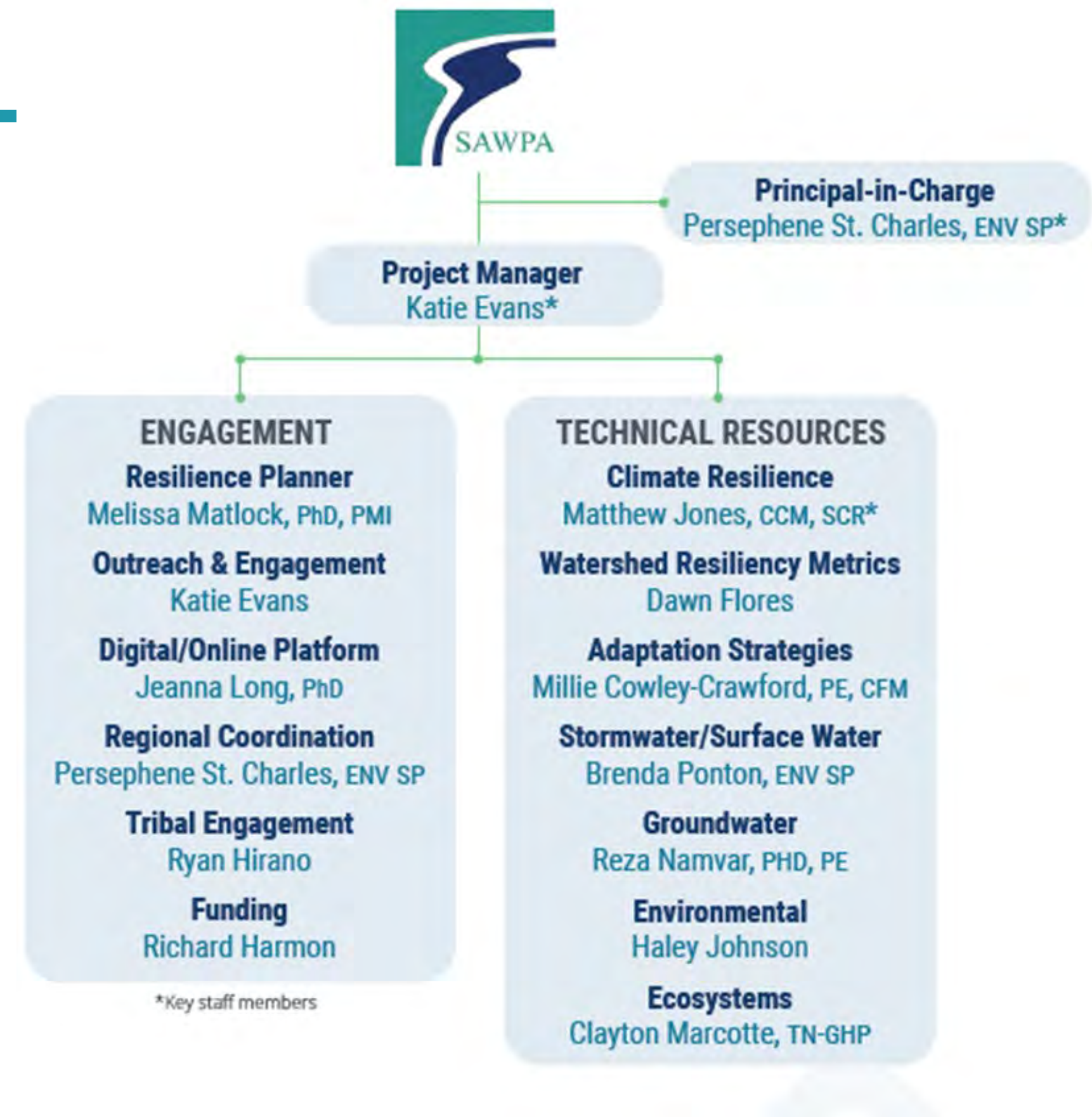
4. Planning focused on implementation and continued support:

- Create implementable adaptation strategies and resilience portfolios.
- Develop performance metrics and a measurement framework.

Public Agency Engagement (W&C)

Woodard & Curran Org Chart

- Public Agency Engagement
 - Engagement Materials
 - Plan and facilitate engagement
- Climate resiliency approach:
 - Risks
 - Vulnerabilities
 - Adaption strategies
- Incorporate Community and Tribal Engagement outcomes
- “Plan” development
- Digital presence



Public Agency Engagement (W&C)

- Public Agency Engagement
 - Reference Material Review
 - Develop Public Agency Engagement Plan
 - Develop Engagement Materials
 - Surveys / Online presence
 - Workshop with Public Agencies (by Member Agency service area)
- Plan Components
 - Risks and Vulnerabilities Assessment
 - Adaptation Strategies
 - Resilience Portfolios
- Other items
 - List of metrics/indicators
 - Incorporate Community and Tribal Engagement
 - Plan Development



**Santa Ana
Watershed
Authority –
Climate
Adaptation
and Resilience
Plan**

Workplan

Updated
March 2025

0012901.00
SAWPA

woodardcurran.com

Public Agency Engagement (W&C)

- Kickoff Meeting (April 7):

- Project Overview
- Project Timeline/Schedule
- Meeting Plan
- Engagement Plan Coordination
- Progress Updates



- **Public Agency Engagement**

- Plan preparation, engagement materials, support for TAC

- **Implement Public Agency Engagement Plan**

- Workshops, surveys, document outcomes

- **Community and Tribal Engagement**

- Support engagement process, support for CAP, synthesize outcomes.

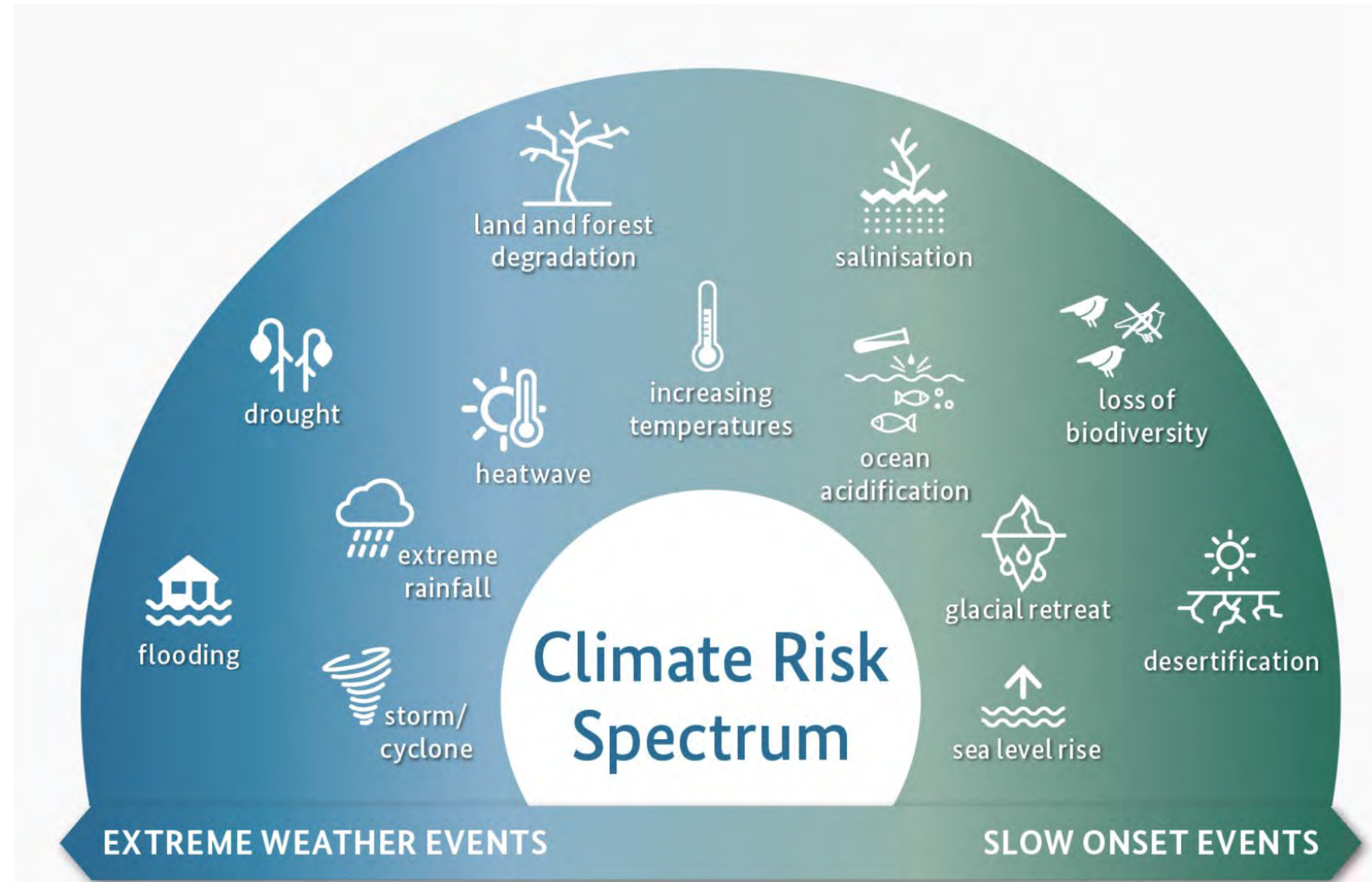
- **Digital Presence for CARP**

Tribal Engagement

- Soboba Work Plan:
 - Talking circles, breakout sessions, and presentations during Tribal conferences, workshops, or similar gatherings.
- Key engagement efforts:
 - Regional Tribal Operations Committee (RTOC): June 2025
 - Annual Region 9 EPA Tribal Conference: October 2025
 - Native American Environmental Protection coordinate engagement with member Tribes on their climate resilience work
 - Soboba will reach out to specific Tribes within the watershed (San Manuel and Morongo Tribes)
- Develop Survey
 - Engage with Tribal Community in the watershed
 - Climate Risks and Vulnerabilities

Community Engagement

- **UC Riverside:**
 - Prepare Work Plan
 - Develop Survey on Climate Risks and Vulnerabilities
 - Develop Engagement Calendar
 - Engage with Community Advisory Panel (CAP)
 - Identify community-based organizations for engagement



Member Agency Involvement

- **Oversight / Input**
 - Member Agency Quarterly Meetings
 - Technical Advisory Committee
- **Support / Participation**
 - Reference material review
 - Workshop planning and participation
- **Review**
 - Workshop outcomes
 - CARP Components
 - CARP (Draft and Final)

SANTA ANA RIVER WATERSHED



Quarterly Planning Meetings



March 2025

CARP Items:

- Member Agency Involvement
- Reference Materials Review and Request

September 2025

CARP Items:

- Public Agency Engagement
- Digital Presence
- Summary of existing and new data (climate risks, vulnerabilities, adaptation projects)

CARP Items:

- Public Agency Engagement

June 2025

CARP Items:

- Public Agency Engagement
- Prioritization of Risks and Vulnerabilities
- Digital Presence

December 2025

Technical Advisory Committee (TAC)

- Role
 - Advisory
 - Provide guidance and technical input
 - Review Public Agency Engagement

TAC	Entity
Planning Manager MA	OCWD Planning Staff
Planning Manager MA	SBVMWD Planning Staff
Planning Manager MA	EMWD Planning Staff
Planning Manager MA	IEUA Planning Staff
Planning Manager MA	WMWD Planning Staff
Tribal	Soboba
Community	ISC3/UCR
Riverside County/Water	Riverside County Flood Control
Orange County/Water	Orange County Watersheds
San Bernardino County/Water	San Bernardino Flood Control
Ag & Natural Resources	Chino Basin Watermaster Agricultural Operator Pool
	San Bernardino County Farm Bureau
	Riverside County Farm Bureau
	Western Riverside County Agricultural Coalition (WRCAC)
Energy	Southern California Edison
Forest/State	United States Forest Service
Regional	WRCOG/CalTrans
Transportation	CalTrans
Regional	MWDSC
RWQCB (ex-officio)	Santa Ana Regional Board

Technical Advisory Committee (TAC): Proposed Topics

Meeting	Date	Potential Topics
1	April 2025	Materials Review
2	July 2025	Watershed Resilience Goals and Vision, Surveys/Workshops
3	October 2025	Materials Review Summary (Annotated Summary), Risks and Vulnerabilities
4	January 2026	Prioritization of Risks and Vulnerabilities
5	April 2026	Evaluation Criteria for Portfolios
6	July 2026	Metrics and Indicators, Adaptation Strategies
7	October 2026	Funding Strategy, Resilience Portfolios
8	January 2027	Digital Platform and CARP

Reference Material Review

- Current
 - SAWPA Staff assembling existing reports, plans, etc.
- W&C Task (next step)
 - Develop annotated summary from existing documents
- Member Agency participation
 - Provide climate documents

Public Agency Workshops: Planning and Participation

- Workshop assumptions
 - By Member Agency service area
 - In-person and virtual workshops
 - Supplemented by surveys
 - Workshop topics
 - Risks and Vulnerabilities
 - Adaptation Strategies and Resilience Portfolios
 - Review CARP components / Draft CARP
- Member Agency support
 - Participate in workshops
 - Identify and recruit sub-members (and other stakeholders) for participation / involvement

Review of CARP Outcomes*

(* Specific review items and schedule under development with W&C's Workplan)

- SAWPA will share:
 - W&C Workplan
 - Public Agency Engagement Work Plan
 - Community and Tribal Engagement information
- Opportunities for review by Member Agencies:
 - Compiled Risks and Vulnerabilities (by service area and watershed scale)
 - Vulnerability Assessment (based on risks and climate vulnerabilities)
 - Climate Vulnerability Problem Statement Matrix
 - Community and Tribal engagement outcomes
 - Adaptation Strategies
 - Resilience Portfolios
 - Online (digital) presence
 - Metric and Indicators
 - Funding strategies
 - CARP (Draft and Final) – Including CARP Review Workshop

Approach for Adaptation Strategies

(conceptual)

Example Adaption Strategies

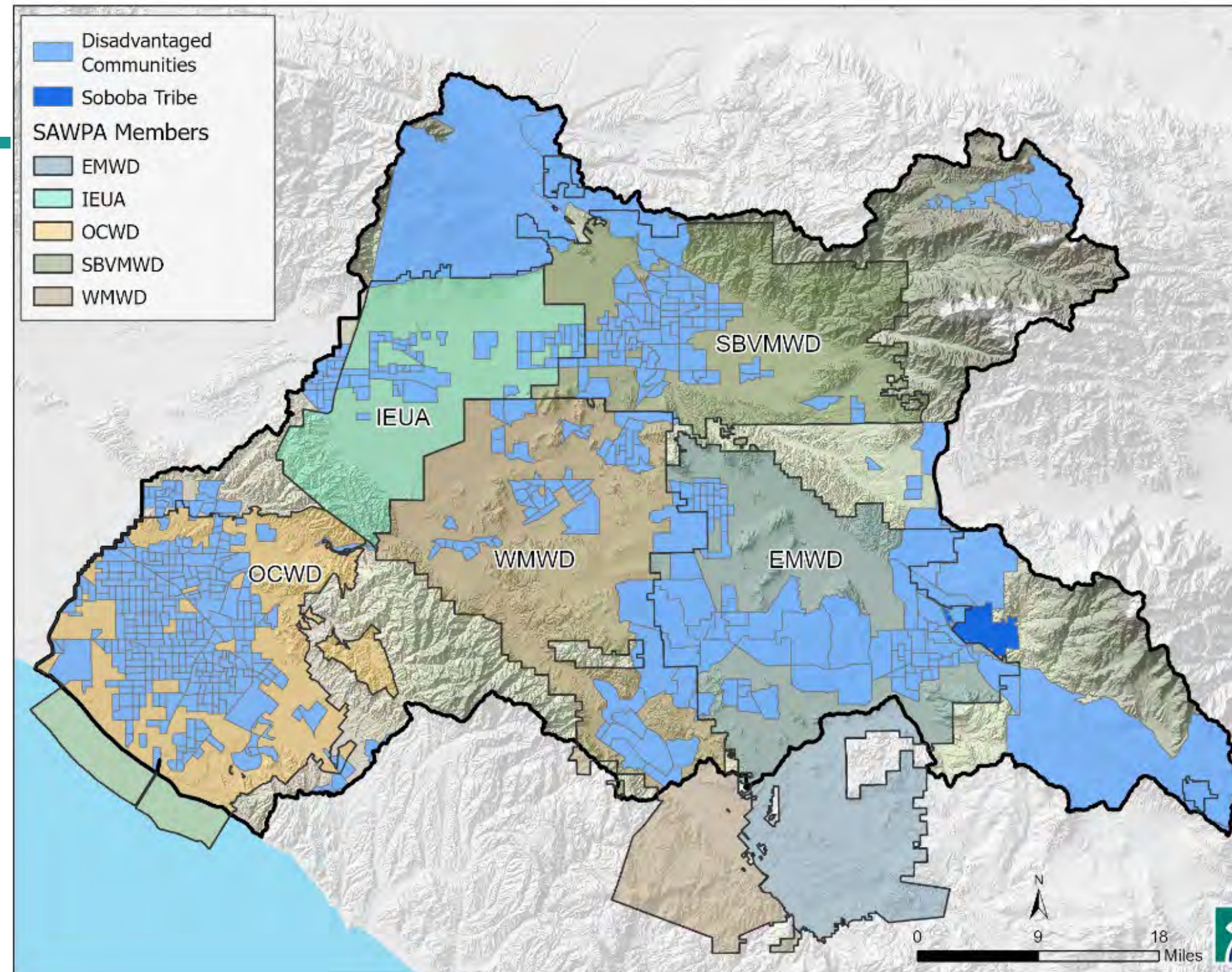
- Stormwater management (green infrastructure, capture and use)
- Groundwater recharge
- Water use efficiency
- Nature-based solutions
- Urban solutions (urban forestry)
- Multi-benefit approaches
- Regional solutions

High level analysis of the solutions

- Descriptions of the strategies/solutions and the projects
- Criteria to conduct a high-level characterization of adaptation strategies in terms of:
 - Climate risks and vulnerabilities addressed
 - Potential constraints and benefits (and beneficiaries)
 - Potential sponsors and stakeholders
 - Potential locations
 - Feasibility
 - Environmental, health, social, and economic factors
 - Others, as needed

Next Steps

- Data Request:
 - Reference Materials Request (April)
- Next Steps:
 - TAC Meeting – April 2025
 - W&C Work Plan
 - Engagement Work Plans



Questions

Haley Gohari
Santa Ana Watershed Project Authority
Office (951) 354-4250
hgohari@sawpa.gov
sawpa.gov

