



SANTA ANA WATERSHED
PROJECT AUTHORITY

Santa Ana River Watershed Climate Adaptation and Resilience Plan – Request for Proposals

Commission Meeting

Item No. 6.D

Rachel Gray

Water Resources and Planning Manager

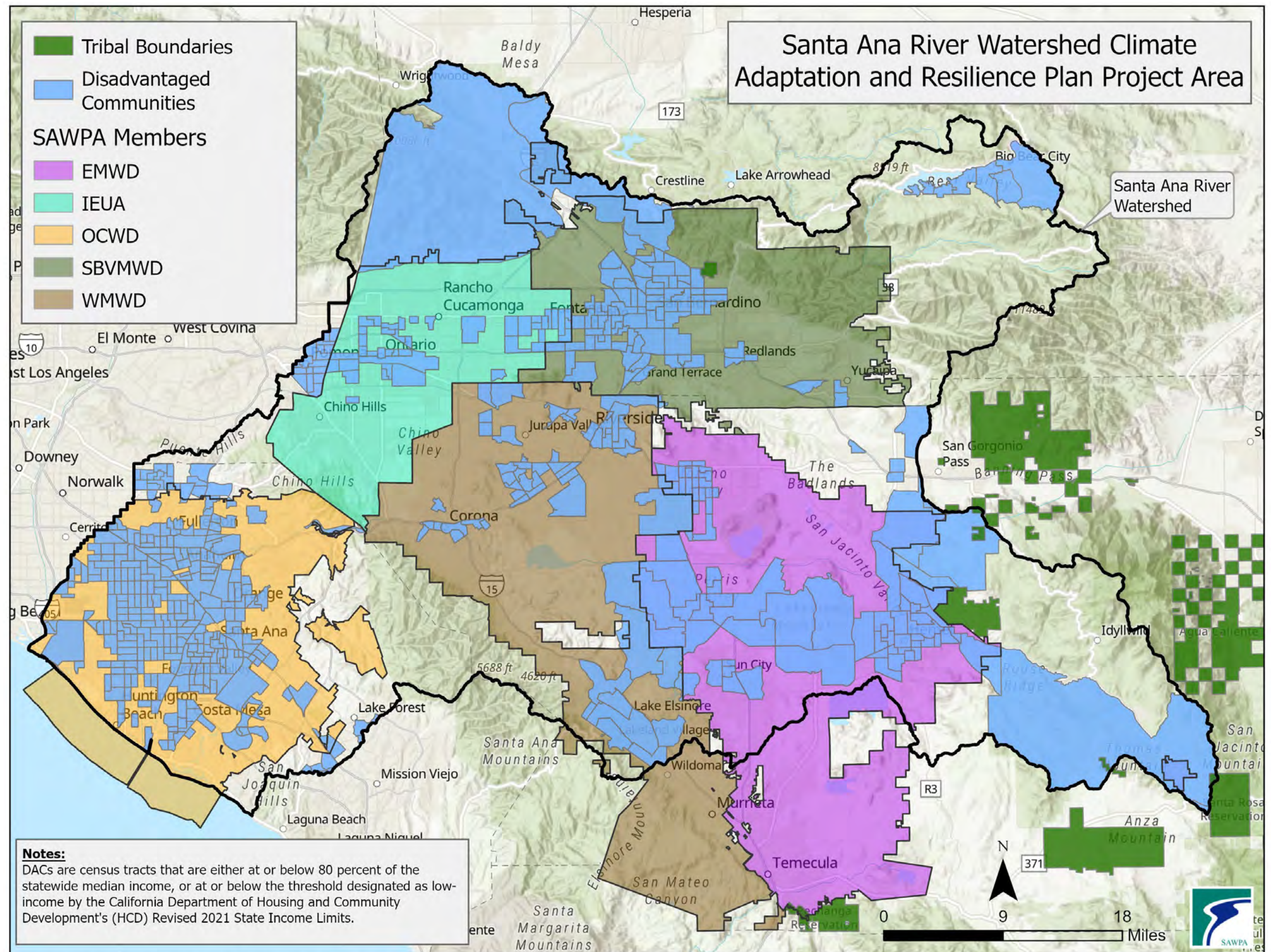
December 3, 2024

Recommendation

To authorize the General Manager, or his designee, to issue a Request for Proposals to develop a Climate Adaptation and Resilience Plan for the Santa Ana River Watershed.

Agenda

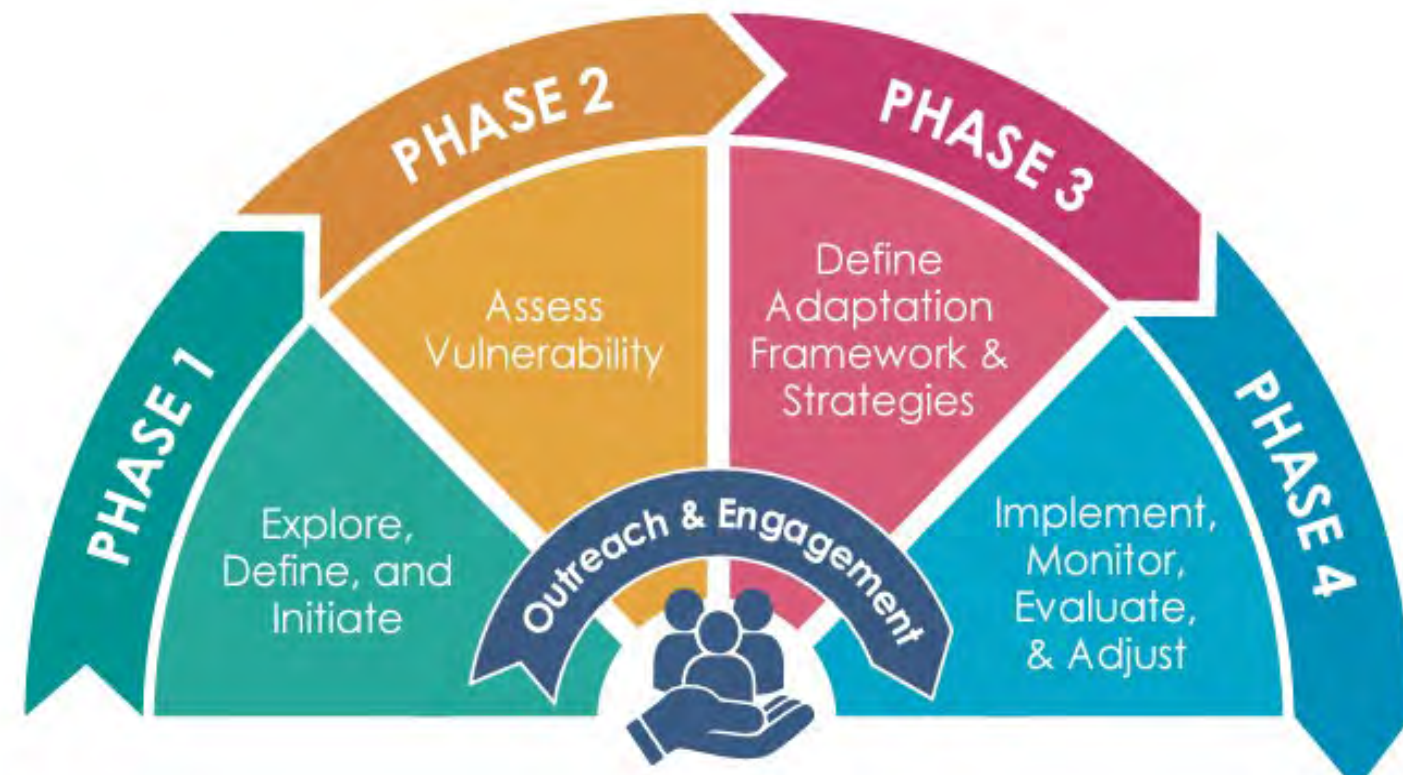
- Background on Grant Program
- CARP Background
 - Purpose
 - Benefits
 - Organizational Structure
 - Roles
- Project Workflow
 - Project Deliverables
 - Assumptions
- Schedule
- Recommendation



P:\Projects\RachelGray\DACTribeMA\DACTribeMA.aprx LoDACTribe SW-3331

Background on Grant Program

- SAWPA was awarded grant funding, in an amount of **\$644,190**, from the Governor's Office of Land Use and Climate Innovation (formerly Governor's Office of Planning and Research) Regional Resilience Grant Program (RRGP) to help build climate resilience in the Santa Ana River Watershed.
- **RRGP** funds effort to:
 - ✓ Review climate risks
 - ✓ Identify climate resilience priorities
 - ✓ Build capacity
 - ✓ Implement projects that respond to a region's greatest climate risks



Adaptation Planning Process from California Adaptation Guide, (2020)

Climate Adaptation and Resilience Plan

- **CARP Definition:**

- A CARP is a strategic framework that outlines specific actions and measures to enhance the resilience of a watershed to the impacts of climate change risks.
- A CARP aims to address the climate risks and vulnerabilities of water resources, ecosystems, and communities within the watershed by integrating regional and local adaptive management practices.

- **Purpose of a Regional CARP:**

- Develop a community-informed, stakeholder-driven, and implementation-focused Plan in support of funding regional planning and implementation projects that address the impacts of climate change risks for the region.

Benefits of CARP



Advance watershed resiliency



Define watershed-wide climate risks and vulnerabilities



Develop local and regional climate adaptation strategies



Enhance multi-jurisdictional collaboration



Provide a mechanism for future funding of member agency projects, other stakeholder projects, and regional projects

Grant: SAWPA and Co- Applicants

Lead Agency: SAWPA

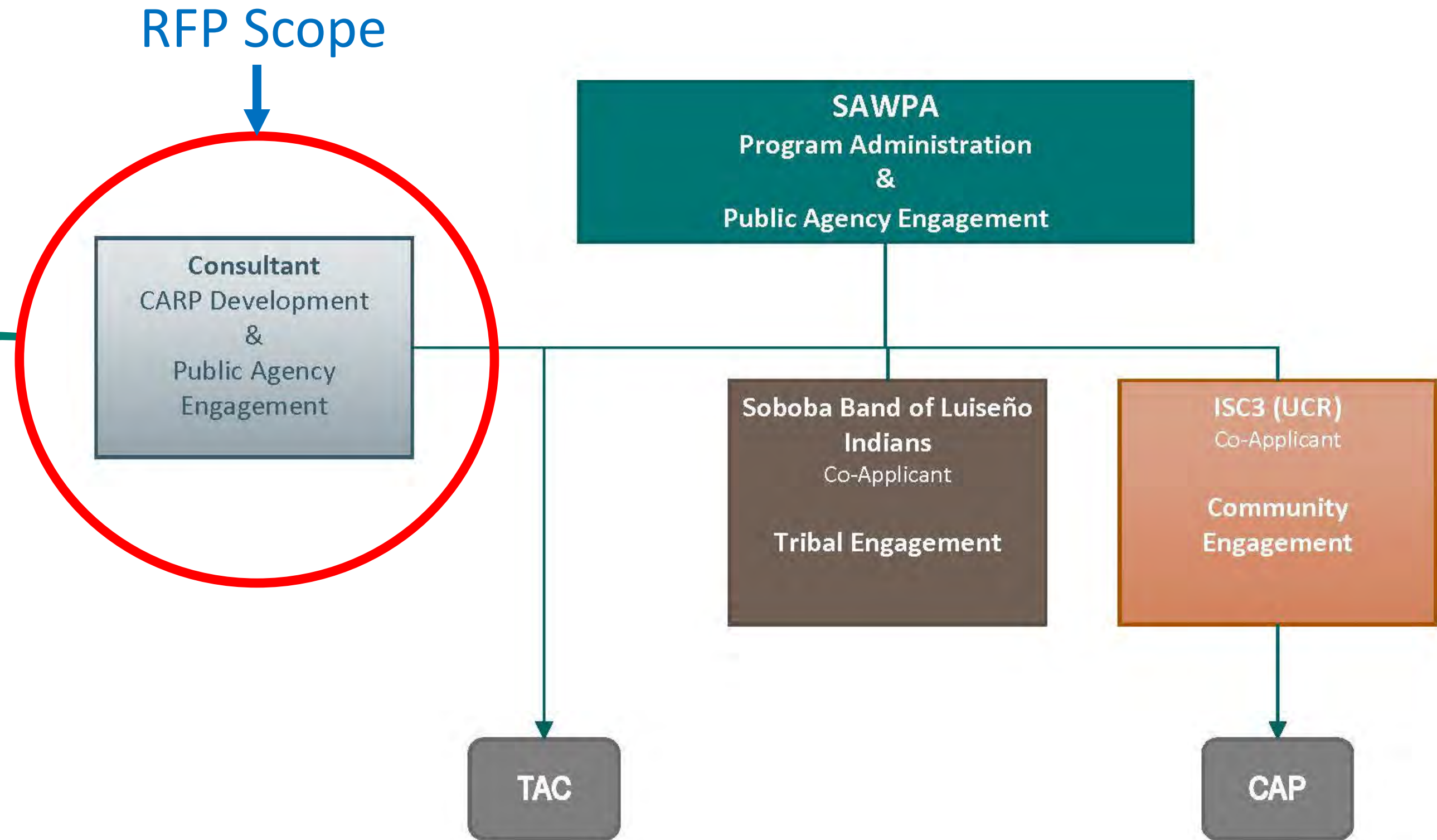
- Manage overall grant
- Secure Consultant (**subject of RFP**)
- Facilitate Technical Advisory Committee (TAC)

Co-Applicants:

- Soboba
 - ✓ Tribal Engagement
- ISC3/UC Riverside
 - ✓ Community Engagement
 - ✓ Facilitate Community Advisory Panel (CAP)

Role: SAWPA

- Execute grant agreement requirements
- Overall project management
- Responsible for CARP development
- Communicate with SAWPA member agencies
- Review with OWOW Steering Committee
- Facilitate stakeholder collaboration on climate resilience in the watershed



Technical Advisory Committee (TAC)

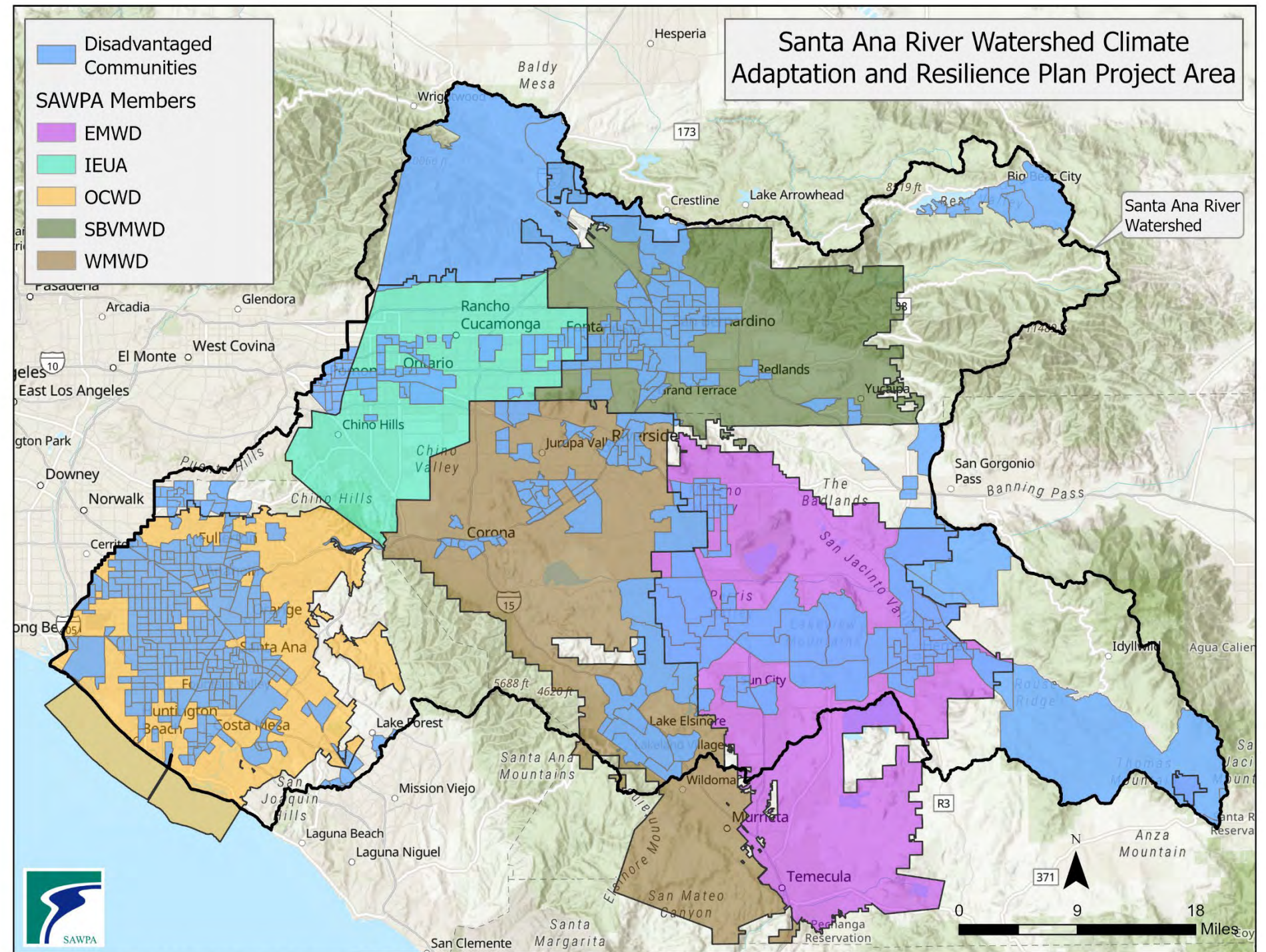
Purpose:

- Provide oversight
- Forum for public agencies to discuss CARP process and review progress
- Provide guidance and technical input on the project (climate risks, vulnerabilities, and adaptation strategies)
- Provide input on data from existing studies
- Provide input on adaptation analysis

TAC	Entity
Planning Manager MA	OCWD Planning Staff
Planning Manager MA	SBVMWD Planning Staff
Planning Manager MA	EMWD Planning Staff
Planning Manager MA	IEUA Planning Staff
Planning Manager MA	WMWD Planning Staff
Tribal	Soboba
Riverside County/Water	Riverside County Flood Control
Orange County/Water	Orange County Watersheds
San Bernardino County/Water	San Bernardino Flood Control
Ag & Natural Resources	UC Riverside
Energy	Southern California Edison
Forest/State	United States Forest Service
Regional	WRCOG
Transportation	CalTrans
Regional	MWDSC
RWQCB (ex-officio)	Santa Ana Regional Board

Role: Inland Southern California Climate Collaborative (ISC3) / UC Riverside

- ISC3
 - Administered by UC Riverside's School of Public Policy and Office of Sustainability.
- Community Engagement Plan:
 - Workshops
 - Surveys
 - Existing Events
- Community Outreach
 - Organized by Community-Based Organizations (CBOs)



P:\Projects\RachelGray\DACTribeMA\DACTribeMA.aprx LoDAC SW-3333

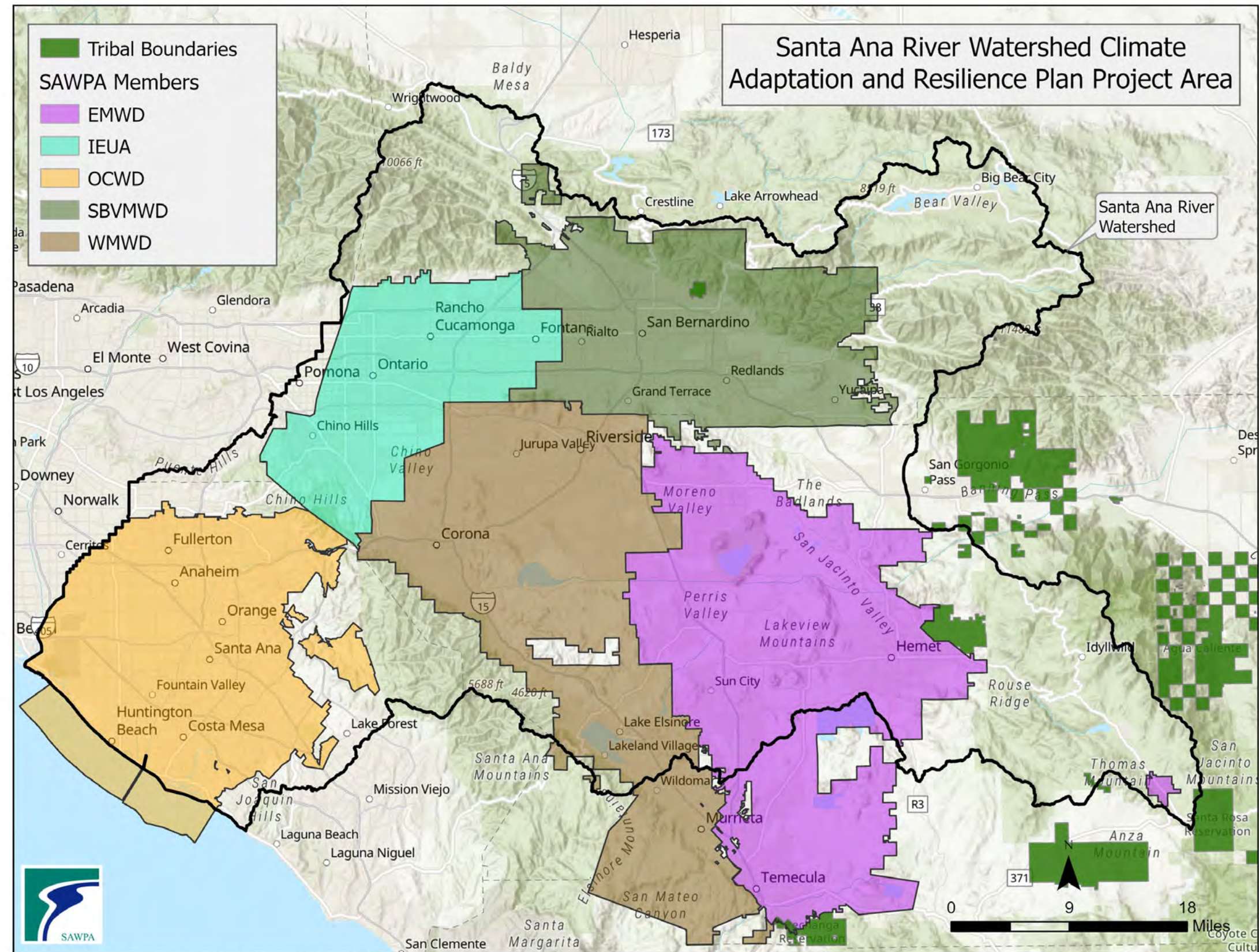
Role: Community Advisory Panel

- Facilitated by ISC3 (UC Riverside) with SAWPA oversight
- Discuss the community engagement process and the role of the CBOs
- Track and guide engagement activities with communities on climate risks, vulnerabilities, adaptation strategies
- Provide guidance on adaptation portfolios

CAP	Entity	Spatial Distribution
Tribal	Soboba	Riverside County
Community	ISC3	Riverside and San Bernardino Counties
Community	California Rural Water Association	Regional
Community	OC Coastkeeper/IE WaterKeeper	Inland Empire/Orange County
Community	Santa Ana Watershed Association	Regional
Regional	Steering Committee Member (City/County)	Regional
Community	Inland Action	San Bernardino County
Community	Climate Action Campaign	Orange County
Community	Accelerate Neighborhood Climate Action	Redlands
Community	R-NOW	Riverside County

Role: Soboba

- CARP Goal:
 - Obtain tribal perspectives on climate vulnerabilities and underlying risk factors that influence sensitivity to climate hazards
- Approach: Tribal Engagement Plan
 - Tribal Elders
 - Talking Circles
 - Tribal Conferences
- Outcome:
 - Project builds capacity for tribal engagement

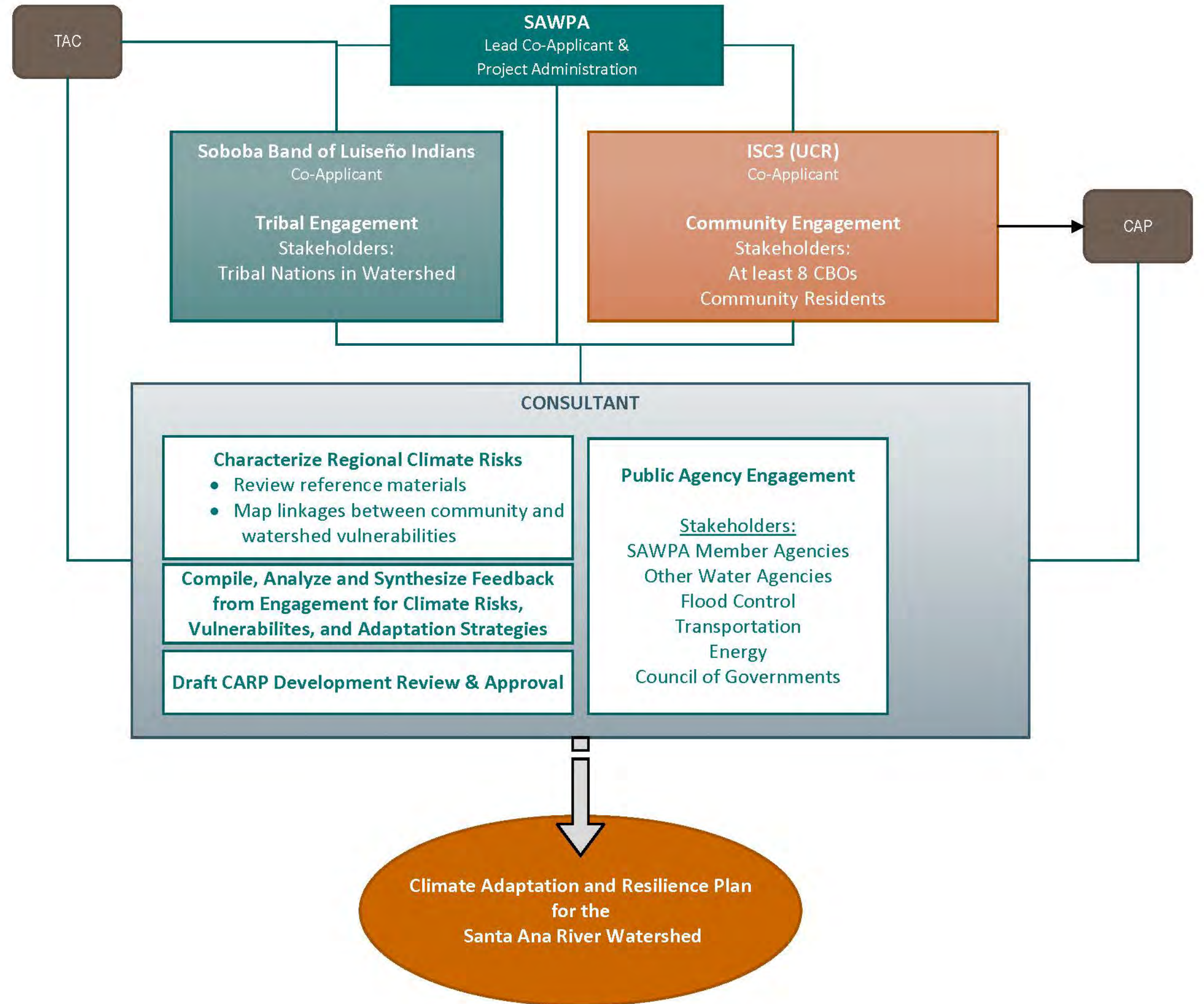


P:\Projects\RachelGray\DACTribeMA\DACTribeMA.aprx LoTribe SW-3332

Role: Consultant

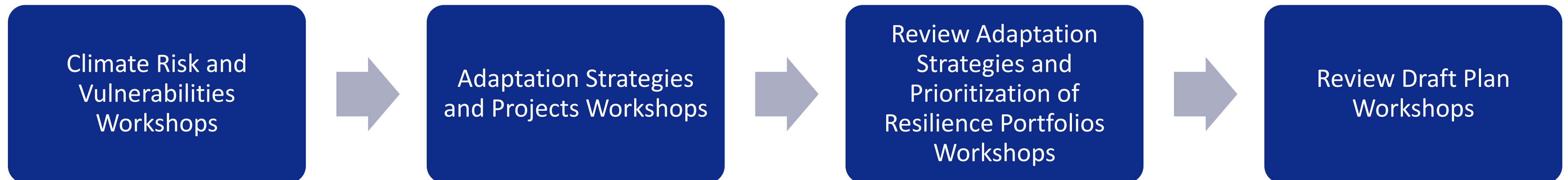
- Public Agency Engagement
- Workplan
- Data Request
- Climate Risks
- Climate Vulnerabilities
- Adaptation Analysis
- Resilience Portfolios
- Funding Strategies
- Implementation Plan
- CARP and Geospatial Databa

Synthesize Input from Community, Tribal and, Agency Stakeholders



Elements of RFP Tasks

- Workplan (milestones, deliverables, schedule)
- “Public Agency Engagement” Plan
- Review available planning documents for watershed stakeholders
- Series of workshops by Member Agency service area:



- Supplement workshops with online surveys
- Consultant to synthesize workshop results and outcomes of Community Engagement and Tribal Engagement efforts
- SAWPA will update/engage Member Agencies via Quarterly Planning Manager Meetings
- Commission and GMs will be updated at regular intervals

Outcomes

Initial Deliverables:

- Project Work Plan (Milestones, Deliverables, Schedule)
- Public Agency Engagement Plan (SAWPA/Consultant)
- Community and Tribal Engagement Plan (Soboba/ISC3)

CARP Elements:

- Climate Risks Characterization
- Vulnerability Assessment
- Adaptation Strategies (local/regional)
- Resilience Portfolios

Supplemental Deliverables

- Watershed Resilience Vision and Goals
- Funding Strategy Matrix
- Implementation Plan

CARP

- Draft and Final Plan
- Online Platform

RFP Assumptions

- TAC provides guidance for Public Agency Engagement
- Review of reference documents:
 - Relevant Member Agency planning documents
 - Other available planning documents
- Implementation Plan (workshops, etc.) will be organized by Member Agency service area
- Deliverables (CARP, online platform, resulting analyses, etc.) will be organized by Member Agency service area
- Proposed completion date: December 2026

RFP / Proposal Schedule

Date	Event
December 3, 2024	<ul style="list-style-type: none">• Commission Approval to Release RFP• Release RFP following Approval
December 20, 2024	<ul style="list-style-type: none">• Deadline for Consultants to Submit Inquiries
January 20, 2025	<ul style="list-style-type: none">• Deadline for SAWPA Receipt of Proposals
January 27-30, 2025	<ul style="list-style-type: none">• Interviews of select firms if needed
January 21, 2025	<ul style="list-style-type: none">• Update Commission on Consultant Selection Process
February 11, 2025	<ul style="list-style-type: none">• Update GMs on Results of Consultant Selection Process
February 18, 2025	<ul style="list-style-type: none">• SAWPA Commission Approval/Award Contract (tentative)

Recommendation

To authorize the General Manager, or his designee, to issue a Request for Proposals to develop a Climate Adaptation and Resilience Plan for the Santa Ana River Watershed.

Questions

Rachel Gray
Santa Ana Watershed Project Authority
Office (951) 354-4250
rgray@sawpa.gov
sawpa.gov



@sawpa_water



@sawpatube