



SANTA ANA WATERSHED
PROJECT AUTHORITY

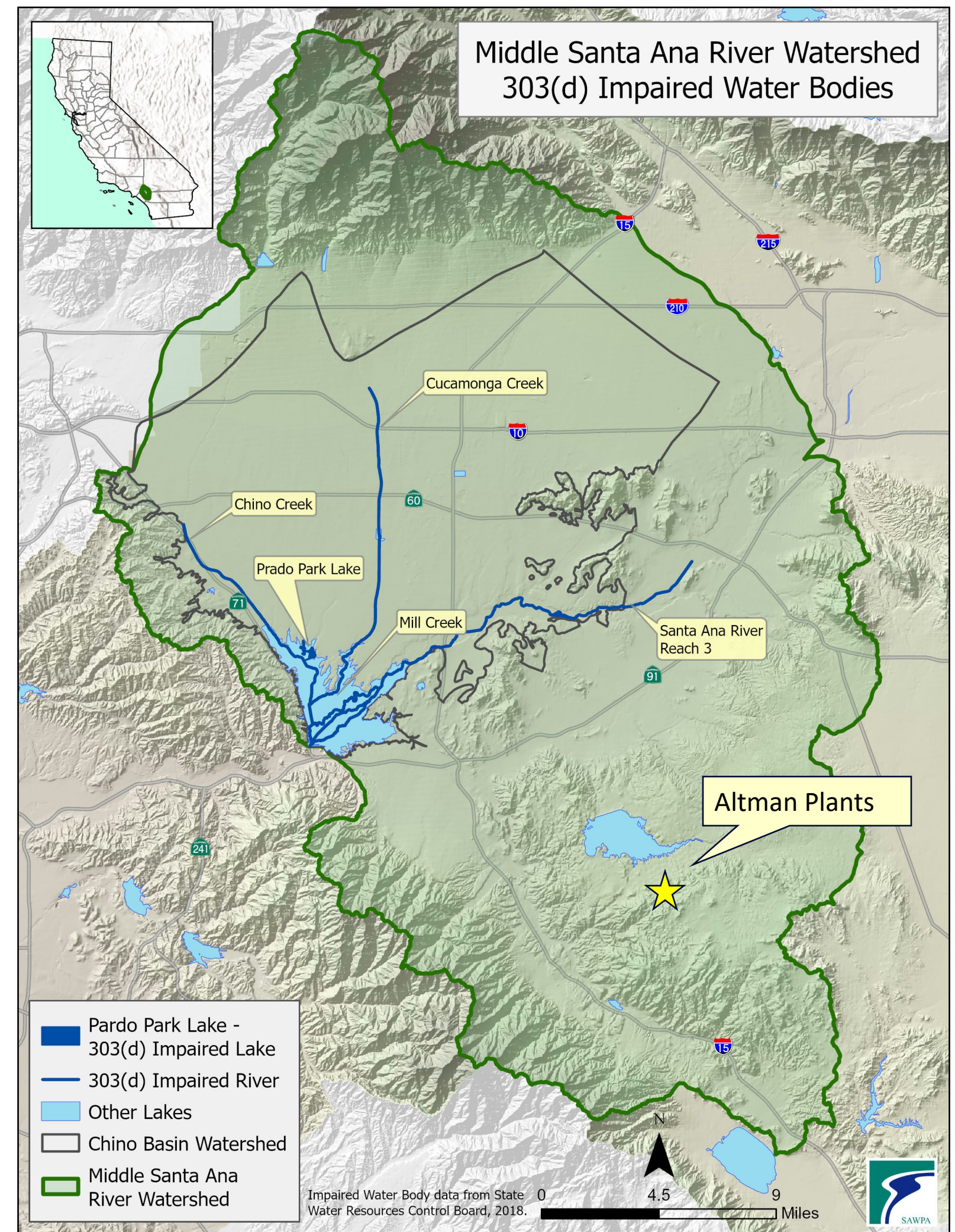
Middle Santa Ana River TMDL Task Force

Altman Plants – Request to Participate in Task Force

December 9, 2024

Middle Santa Ana River TMDLs

- In 2005, the Santa Ana Water Board adopted the Middle Santa Ana River Watershed Bacterial Indicator TMDL Numeric Targets. When it was adopted, the Water Board included agricultural and dairy discharges in the TMDL as a potential source to be regulated under the TMDL. They also adopted a requirement for an Agricultural Source Evaluation Plan and Agricultural Source Management Plan intended to direct future actions by the Water Board with respect to agricultural discharges.
- The Chino Basin Watermaster Agricultural Pool currently covers 75% of agricultural and dairy dischargers (within the Chino sub-watershed). The remaining 25% remains uncovered and there has been no formal effort by the Santa Ana Water Board to encourage or force others into participating in the MSAR TMDL Task Force.



Recommendation

- Altman Plants, an agricultural operator in the Middle Santa Ana River Watershed has requested to join the Task Force to comply with the TMDL as it exists in the Basin Plan and share in costs for monitoring and implementation efforts that are done collectively and cooperatively through the Task Force Process.
- Staff is recommending an annual budget allocation to Altman Plants of \$1,500 to participate in the MSAR TMDL Task Force.
- Through this participation, Altman Plants can attest that it is in compliance with certain parts of the TMDL through participation in the Task Force.



Questions?

Thank You

Rick Whetsel
Santa Ana Watershed Project Authority
Office (951) 354-4220 | Direct (951) 354-4222
rwhetsel@sawpa.gov
sawpa.gov

