



...A United Voice for the Santa Ana River Watershed

## OWOW Steering Committee Members

**Gil Botello**, Convener | SAWPA Commissioner  
**Philip E. Paule**, SAWPA Commissioner  
**Vicente Sarmiento**, Orange County Supervisor  
**Amanda Carr**, Orange County Supervisor Representative (Alt.)  
**Karen Spiegel**, Riverside County Supervisor  
**Edward Coronado**, Riverside County Supervisor Representative (Alt.)  
**Jesse Armendarez**, San Bernardino County Supervisor

**Vacant**, San Bernardino County Municipal Representative  
**Wes Speake**, Councilmember, City of Corona  
**Fred Jung**, Orange County Municipal Representative  
**William Ruh**, Regional Water Quality Control Board  
**John Scandura**, Regional Water Quality Control Board (Alt.)  
**James Hessler**, Altman Plants  
**Garry W. Brown**, Orange County Coastkeeper

**THIS MEETING WILL BE CONDUCTED IN A HYBRID FORMAT, OFFERING BOTH VIRTUAL PARTICIPATION AND IN-PERSON ATTENDANCE, PROVIDING AN OPPORTUNITY FOR PUBLIC COMMENT. ALL VOTES TAKEN WILL BE CONDUCTED BY ORAL ROLL CALL.**

| Meeting Access Via Computer (Zoom):   | Meeting Access Via Telephone:  |
|---|--|
| <ul style="list-style-type: none"><li><a href="https://sbvmwd.zoom.us/j/87447539173?from=addon">https://sbvmwd.zoom.us/j/87447539173?from=addon</a></li><li>Meeting ID: 874 4753 9173</li></ul> | <ul style="list-style-type: none"><li>1 (213) 338-8477</li><li>Meeting ID: 874 4753 9173</li></ul> |

**REGULAR MEETING OF THE  
OWOW STEERING COMMITTEE  
SAN BERNARDINO VALLEY MUNICIPAL WATER DISTRICT  
380 EAST VANDERBILT WAY, SAN BERNARDINO, CA 92408**

**THURSDAY, MAY 22, 2025 – 11:00 A.M.**

### **AGENDA**

- 1. CALL TO ORDER | PLEDGE OF ALLEGIANCE (Gil Botello, Convener)**
- 2. ROLL CALL**
- 3. PUBLIC COMMENTS**

Members of the public may address the Committee on items within the jurisdiction of the Committee; however, no action may be taken on an item not appearing on the agenda unless the action is otherwise authorized by Government Code §54954.2(b).

Members of the public may make comments in-person or electronically for the Committees' consideration by sending them to [publiccomment@sawpa.gov](mailto:publiccomment@sawpa.gov) with the subject line "Public Comment". Submit your electronic comments by 5:00 p.m. on Wednesday, May 21, 2025. All public comments will be provided to the Chair and may be read into the record or compiled as part of the record. Individuals have a limit of three (3) minutes to make comments and will have the opportunity when called upon by the Committee.

- 4. ITEMS TO BE ADDED OR DELETED**

Pursuant to Government Code §54954.2(b), items may be added on which there is a need to take immediate action and the need for action came to the attention of the Santa Ana Watershed Project Authority subsequent to the posting of the agenda.



...A United Voice for the Santa Ana River Watershed

## 5. CONSENT CALENDAR

All matters listed on the Consent Calendar are considered routine and non-controversial and will be acted upon by the Committee by one motion as listed below.

- A. APPROVAL OF MEETING MINUTES: FEBRUARY 27, 2025 ..... 5  
**Recommendation:** Approve as posted.

## 6. INFORMATIONAL REPORTS

**Recommendation:** Receive for information.

- A. SANTA ANA RIVER HOMELESS SOLUTIONS COLLABORATIVE (SC#2025.4) ..... 11  
**Presenter:** Kyla Brown and Oscar Serrato, Riverside County Regional Park and Open-Space District
- B. ONE WATER ONE WATERSHED PROJECT HIGHLIGHT – MUNICIPAL WATER DISTRICT OF ORANGE COUNTY (SC#2025.5) ..... 35  
**Presenter:** Rachel Waite-Harvey and Sam Fetter, Municipal Water District of Orange County
- C. SANTA ANA RIVER WATERSHED CLIMATE ADAPTATION AND RESILIENCE PLAN – TECHNICAL ADVISORY COMMITTEE MEETING #1 (SC#2025.6) ..... 51  
**Presenter:** Haley Gohari

## 7. SAWPA GENERAL MANAGER REPORT

## 8. CONVENER'S COMMENTS/REPORT

## 9. COMMITTEE MEMBERS' COMMENTS

## 10. REQUEST FOR FUTURE AGENDA ITEMS

## 11. ADJOURNMENT

### **PLEASE NOTE:**

Americans with Disabilities Act: Meeting rooms are wheelchair accessible. If you require any special disability related accommodations to participate in this meeting, please contact (951) 354-4220 or [zramirez@sawpa.gov](mailto:zramirez@sawpa.gov). Notification at least 48 hours prior to the meeting will enable staff to make reasonable arrangements to ensure accessibility for this meeting. Requests should specify the nature of the disability and the type of accommodation requested.

Materials related to an item on this agenda submitted to the Committee after distribution of the agenda packet are available for public inspection during normal business hours at the SAWPA office, 11615 Sterling Avenue, Riverside, and available at [www.sawpa.org](http://www.sawpa.org), subject to staff's ability to post documents prior to the meeting.

### **Declaration of Posting**

I, Zyanya Ramirez, Executive Assistant II for the Santa Ana Watershed Project Authority declare that on Thursday, May 15, 2025 a copy of this agenda has been uploaded to the SAWPA website at [www.sawpa.gov](http://www.sawpa.gov) and posted at the SAWPA office, 11615 Sterling Avenue, Riverside, California.



...A United Voice for the Santa Ana River Watershed

**2025 OWOW Steering Committee Regular Meetings**

Fourth Thursday of February, May, September, and November

(Note: All meetings begin at 11:00 a.m., unless otherwise noticed, and are held virtually.)

|   |   |
|---|---|
| <b>February</b><br>2/27/2025 Regular Committee Meeting  | <b>May</b><br>5/22/2025 Regular Committee Meeting at SBVMWD |
| <b>September</b><br>9/25/2025 Regular Committee Meeting | <b>November</b><br>11/20/2025 Regular Committee Meeting *   |

\*Meeting date adjusted due to conflicting holiday.

Page Intentionally Blank



...A United Voice for the Santa Ana River Watershed

## OWOW STEERING COMMITTEE

### REGULAR MEETING MINUTES

### FEBRUARY 27, 2025

| <b>Committee Members</b>   |   |
|--|---|
| <b><u>Santa Ana Watershed Project Authority Representatives</u></b>          |   |
| Gil Botello, Convener, San Bernardino Valley Municipal Water District        | Present   |
| Philip E. Paule, Eastern Municipal Water District                            | Absent  |
| <b><u>County Supervisor Representatives</u></b>                              |   |
| Vicente Sarmiento, Orange County Board of Supervisors                        | Absent  |
| Amanda Carr, Orange County Public Works (OC Alternate)                       | Present   |
| Karen Spiegel, Riverside County Board of Supervisors                         | Absent  |
| Edward Coronado, Riverside County Board of Supervisors (Riverside Alternate) | Present   |
| Jesse Armendarez, San Bernardino County Board of Supervisors                 | Absent  |
| <b><u>County Municipal Representatives</u></b>                               |   |
| Vacant, Orange County Municipal Representative                               | N/A   |
| Wes Speake, Councilmember, City of Corona                                    | Present   |
| Vacant, San Bernardino County Municipal Representative                       | N/A   |
| <b><u>Business Community Representative</u></b>                              |   |
| James Hessler, Director of West Coast Operations, Altman Plants              | Present   |
| <b><u>Environmental Community Representative</u></b>                         |   |
| Garry W. Brown, President, Orange County Coastkeeper                         | Absent  |
| <b><u>Regional Water Quality Control Board Representative</u></b>            |   |
| William Ruh, Regional Water Quality Control Board                            | Present   |
| John Scandura, Regional Water Quality Control Board (RWQCB Alternate)        | Present   |
| <b>Others Present</b>  |   |
| <b><u>SAWPA COMMISSIONERS:</u></b>   | Fred Jung, T. Milford Harrison  |
| <b><u>SAWPA STAFF:</u></b>   | Jeff Mosher, Marie Jauregui, Pete Vitt, Rachel Gray, Rick Whetsel, Sara Villa, Shavonne Turner, Zyanya Ramirez  |
| <b><u>OTHERS PRESENT:</u></b>  | Carly Pierce, Western Municipal Water District; Christy Suppes, Orange County Public Works; Craig Foster, City of Santa Ana; Jesse Streeter; Manny Escamilla, Orange County; Thomas Bunn, Lagerlof LLP; |

The OWOW Steering Committee meeting was called to order at 11:00 a.m. by Gil Botello, Convener, at the Santa Ana Watershed Project Authority, 11615 Sterling Avenue, Riverside, CA 92503.



1. **CALL TO ORDER | PLEDGE OF ALLEGIANCE**

2. **ROLL CALL**

3. **PUBLIC COMMENTS**

There were no public comments; there were no public comments received via email.

4. **ITEMS TO BE ADDED OR DELETED**

5. **CONSENT CALENDAR**

A. APPROVAL OF MEETING MINUTES: NOVEMBER 21, 2024

**MOVED**, approve the Consent Calendar.

|                |   |
|----------------|---|
| Result:        | <b>Adopted by Roll Call Vote</b>              |
| Motion/Second: | Ruh/Speake                                    |
| Ayes:          | Botello, Carr, Coronado, Speake, Hessler, Ruh |
| Nays:          | None  |
| Abstentions:   | None  |
| Absent:        | Armendarez, Brown, Paule, Sarmiento, Spiegel  |

6. **INFORMATIONAL REPORTS**

**Recommendation:** Receive for information.

A. **PROPOSITION 1 ROUND 1 PROJECT HIGHLIGHT: RAITT AND MYRTLE PARK PROJECT (SC#2025.1)**

Rachel Gray presented Craig Foster, NPDES Manager, from the City of Santa Ana. Mr. Foster provided a presentation titled *Raitt & Myrtle Park Project: Proposition 1 IRWM (2019)* contained in the agenda packet on pages 9-29.

Foster presented the Raitt and Myrtle Park Project (also known as the Ed Carruthers Park Project). He highlighted the city's efforts to manage stormwater in the Anaheim Bay, Santa Ana River, and Newport Bay watersheds. The project, which was funded by a \$1.675 million Proposition 1 Round 1 grant, includes a 1.2-acre park with an underground stormwater infiltration system, two bioretention basins, drought-resistant landscaping, educational signage, and recreational features. The park is designed to capture runoff from both the park and surrounding 10-acre neighborhood, with an estimated annual stormwater capture of 5.3 acre-feet. The project aims to reduce pollutants, enhance water quality, and provide community benefits.

Foster discussed the technical aspects of the project, including design details for the bioretention basins and underground infiltration system, and construction photos showing the system installation. The project is located near disadvantaged communities, contributing to local quality-of-life improvements. [Monitoring data from 2024](#) indicates the project's success, with an estimated 5.7 acre-feet of stormwater infiltrated, surpassing expectations. The stormwater capture system removed significant pollutants, including ammonia, copper, total suspended solids, and bacteria, reducing pollutants by 81% from flowing into Newport Bay.

Committee member Scandura commended the presentation on the Raitt and Myrtle Park Project and expressed interest in visiting the park. He asked Foster about the handling of excess runoff, referencing a past instance where 5.7 acre-feet of runoff occurred, surpassing the design capacity of 5 acre-feet per year. Scandura inquired whether the excess runoff could still be treated by the system or if it would flow into the neighborhood. Foster clarified that the park is designed to capture up to 1.75 inches of rain within a 24-hour period. During storms exceeding this capacity, such as 2-inch or 3-inch storms, the





excess runoff bypasses the park and flows into the city's storm drain system, eventually reaching Newport Bay.

Committee member Carr praised Foster and the City of Santa Ana for their work on the Raitt and Myrtle Park Project, specifically highlighting the park as an exemplary multi-benefit project. She commended the integration of water quality benefits with recreational features, such as the skate park, which enhances the community in ways that extend beyond the primary water quality focus. Carr emphasized that while many park users may not be focused on water quality, they still benefit from the park's green space and amenities. She expressed that this approach aligns well with the goals of the Integrated Regional Water Management (IRWM) program and praised the city's efforts.

Convener Botello congratulated Foster and the City of Santa Ana for the success of the Raitt and Myrtle Park Project, praising its public relations, water quality, and water capture benefits. He inquired about the public's response to the park, to which Foster shared that feedback has been very positive, highlighting the transformative effect of the park on the community. Botello also asked about the project's return on investment, and Foster explained that a consultant had analyzed several multi-benefit projects, revealing a cost-benefit ratio of 1.06 for the Urban Magic Johnson project, indicating a one-year return on investment. Botello encouraged Foster to share the project at conferences, and Foster confirmed that the project has received multiple awards and been presented at the California Stormwater Quality Association (CASQA) Annual Conference.

This item was for discussion purposes; no action was taken on Agenda Item No. 6.A.

**B. SANTA ANA RIVER WATERSHED CLIMATE ADAPTATION AND RESILIENCE PLAN ENGAGEMENT (SC#2025.2)**

Jeff Mosher discussed the declining prospects of Integrated Regional Water Management (IRWM) funding, noting that future allocations are expected to decrease significantly. Although a proposed Natural Resources Bond includes \$100 million for IRWM, only about \$12 million may be available for the Santa Ana River Watershed. To adapt, SAWPA pursued and was awarded a grant from the Governor's Office of Planning and Research to develop a Climate Adaptation and Resiliency Plan (CARP), which will be tied to the One Water One Watershed (OWOW) program to maintain Steering Committee oversight. This approach aims to position the watershed for future grant opportunities related to climate resiliency, even if they are not directly linked to IRWM.

Committee member Speake expressed uncertainty about how Proposition 4 funding will be allocated, as state agencies like DWR and the Department of Natural Resources are still determining the distribution. He acknowledged that while securing \$12 million for the Santa Ana River Watershed would be beneficial, there is competition from other regions, particularly those affected by recent fires in Los Angeles. Speake expressed confidence in SAWPA's ability to secure grants but emphasized the importance of maintaining connections at the state level to advocate for funding consistent with past allocations.

Committee member Carr shared that she recently participated in a two-day lobbying trip to Sacramento with representatives from seven counties, including San Bernardino and Riverside, where they met with legislators and staff to discuss IRWM funding. The group was encouraged to submit a follow-up letter with recommendations on how current IRWM funds could be distributed effectively and address other funding needs. Ms. Carr plans to coordinate with Jeff Mosher and Christy Suppes from the County of Orange, who has been involved with the IRWM Roundtable of Regions, to draft the letter. She emphasized



that IRWM has been highly successful and that existing relationships and structures should be utilized rather than overlooked in broader funding initiatives.

Rachel Gray provided a presentation titled *Santa Ana River Watershed Climate Adaptation and Resilience Plan – Engagement* contained in the agenda packet on pages 35-47. She reported that SAWPA developed a strategy to supplement the One Water One Watershed (OWOW) Plan with a Regional Climate Adaptation and Resilience Plan (CARP) to address climate risks and vulnerabilities, develop adaptation strategies, and enhance resilience within the Santa Ana River Watershed. The plan will include a portfolio of potential projects, promote equity outcomes for underrepresented communities, and foster partnerships to increase regional resilience. Following a competitive RFP process, Woodard & Curran was selected as the consultant to lead project administration, public agency engagement, resiliency metrics development, and digital platform creation. The consultant's approach focuses on inclusive community and tribal engagement through workshops and surveys and will utilize digital tools for communication and outreach. Next steps include developing work plans and engagement strategies to ensure a community-informed planning process.

Gray welcomed feedback from the Committee members regarding community engagement. Committee member Carr shared insights from Orange County's Stormwater program, highlighting successful community engagement through community-based social marketing concepts. She recommended that the consultant team explore similar approaches, noting the success of the [Overwatering Is Out campaign](#), which encourages residents to reduce irrigation runoff by sharing their actions on a community map, fostering a sense of collective effort and social media engagement. Carr also suggested including Orange County's Climate Action Plan and the climate team, led by Tara Tisopulos, as potential partners in the planning process.

Committee member Scandura suggested engaging with the Santa Ana Regional Water Quality Control Board staff, as they have developed a racial equity plan that includes identifying vulnerable and tribal communities. He noted that staff members are actively working on this effort and recommended collaborating with them to gather ideas on which stakeholders to approach and engage with.

Convener Botello acknowledged the magnitude of the undertaking, noting that San Bernardino Valley Municipal Water District recently completed its CARP, which took approximately two and a half years. He expressed the Committee's willingness to provide support as needed.

This item was for discussion purposes; no action was taken on Agenda Item No. 6.B.

**C. SANTA ANA RIVER WATERSHED CLOUD SEEDING PILOT PROGRAM: YEAR 1 VALIDATION APPROACH (SC#2025.3)**

Jeff Mosher introduced the next agenda item regarding cloud seeding and the ongoing validation process. He explained that it is not being conducted this winter due to the burn scars from the previous summer. Mosher emphasized the importance of transparency in SAWPA's efforts and highlighted that the purpose of the pilot program is to validate the effectiveness of cloud seeding. He noted that Rachel Gray's briefing would provide an update on the validation progress, acknowledging that it is a complex, ongoing process within the four-year pilot, and that the findings shared are still preliminary.

Rachel Gray provided a presentation titled *Santa Ana River Cloud Seeding Pilot Program Validation Approach* contained in the agenda packet on pages 51-73. She stated that the





four-year pilot program, uses ground seeding units, with no aerial seeding involved. The goal is to validate the benefits of the program and communicate its progress to interested parties. Funding is provided by several watershed agencies and Proposition 1, which also covers operations, validation, and surface water modeling.

Due to fire damage in the watershed, operations were suspended for Year 2 but are expected to resume in the upcoming winter season. The Desert Research Institute (DRI) is handling the independent validation of the program, which includes reviewing operations, conducting snow chemistry testing, and analyzing precipitation and stream gauges to understand the program's benefits.

During Year 1 (November 2023 - April 2024), 12 storms were reviewed to assess whether operations were successful. The review showed that the program operated effectively, although there were discrepancies in the hours the seeding units were active compared to the actual conditions needed for successful seeding. Snow chemistry testing revealed inconclusive results, indicating the need for additional sampling.

In terms of the precipitation analysis, a relationship was developed between control and target gauges, with preliminary results showing an increase in precipitation in some areas, particularly in the northeast and southeast target zones. However, not all areas showed benefits. The results for Year 1 suggest a potential 20,000 acre-feet benefit, with a cost of approximately \$20 per acre-foot, making cloud seeding a cost-effective method. However, additional data over the four years is needed to make a definitive conclusion.

Further analysis of the extra-area effect showed that there was no negative impact on surrounding areas outside of the watershed. Additionally, stream gauge analysis is still ongoing, and preliminary results indicate that stream flow may provide clearer insights into the program's impact.

Overall, while there are promising results, more data is needed to fully validate the program's effectiveness. The analysis continues, with a focus on refining sampling methods and extending the validation period.

Convener Botello requested that the final report include metrics and an assessment of the consultants' capacity, along with a cost analysis to determine if the program provides good value for the investment. He stressed the importance of addressing social media criticism in the report. Botello acknowledged the community's concerns about stormwater capture and cloud seeding, particularly in drought years, and supported the use of stream flow measurements, given the warmer storms that may not result in snow but still contribute to stream flow.

Committee member Carr raised a question about evaluating whether precipitation landed in areas where it could be captured, particularly when identifying potential increases in acre-feet. She suggested that it would be helpful to show or assess this aspect, acknowledging that not all precipitation can be captured where it falls. In response, Gray confirmed that they are working on a surface water model exercise to track the additional flow and determine where it ends up.

This item was for discussion purposes; no action was taken on Agenda Item No. 6.C.

## **7. GENERAL MANAGER REPORT**

Jeff Mosher provided an update on several ongoing initiatives. He reiterated that CARP remains one of SAWPA's highest priorities, with a grant and consultants in place for the next



12-18 months, during which they will continue to update the OWOW Steering Committee at each meeting.

He also mentioned that they are working on a regional approach to invasive species, utilizing leftover Proposition 13 funds for removal projects, and plan to engage multiple stakeholders to develop a plan for the best use of these funds in the watershed. In response, Committee member Carr expressed interest in collaborating on Arundo removal in Orange County, sharing that her "Team Arundo" handles regional permitting and would like to involve her mitigation team in this effort.

Lastly, Mosher noted discussions with Convener Botello regarding the possibility of an in-person meeting or tour later this year, with ideas to be brought back for further consideration.

**8. CHAIR COMMENTS/REPORT**

Convener Botello expressed his gratitude to everyone for attending the meeting and emphasized his hope that the committee would take a leading role in securing and utilizing the hundreds of millions of dollars available for innovative projects in the watershed. He stated that SAWPA, through this committee, should be the primary leader and convener in these efforts, and he anticipates great progress over the next few years.

**9. COMMITTEE MEMBERS' COMMENTS**

No additional comments.

**10. REQUEST FOR FUTURE AGENDA ITEMS**

There were no request.

**11. ADJOURNMENT**

The meeting ended at 12:25 p.m.

**APPROVED:** May 22, 2025

---

Gil Botello, Convener

Attest:

---

Zyanya Ramirez, Executive Assistant II

## **OWOW STEERING COMMITTEE MEMORANDUM NO. 2025.4**

**DATE:** May 22, 2025

**TO:** OWOW Steering Committee

**SUBJECT:** Santa Ana River Homeless Solutions Collaborative

**PREPARED BY:** Ian Achimore, Interim Planning Department Manager

### **RECOMMENDATION**

Receive and file.

### **DISCUSSION**

The Santa Ana River and its watershed encompasses 2,650 square miles across San Bernardino, Riverside, and Orange counties. Even during California's prolonged droughts, the Santa Ana River has remained the largest river in Southern California. It is a precious resource for water resources, habitat, open-space and recreation. A multijurisdictional work group from significant stakeholders is required to protect and sustain the connection between humans and the environment. The Riverside County Santa Ana River Homeless Solutions Collaborative (Collaborative) seeks to understand the complexity of human-wildland interactions and address water quality protection, environmental land protection, recreational goals, public access, educational usage, and wildlife habitat.

Established in 2021, the mission of this Collaborative is - protect, preserve, enhance, and conserve the Santa Ana River Bottom's wildlife and habitat for present and future generations, while recognizing the importance of providing multi-disciplinary services to locate stable housing and resources for individuals and families struggling with homelessness.

The members of this Collaborative include:

- Corona City
- Eastvale City
- Jurupa Valley City
- Norco City
- Riverside City
- Riverside County

Parks Director Kyla Brown and Natural Resources Manager Oscar Serrato from Riverside County Regional Park and Open-Space District (District) will be presenting. The District is the administrator of the Collaborative.

### **CRITICAL SUCCESS FACTORS**

- Leverage existing information for the benefit of SAWPA, its members, and other stakeholders.
- Active participation of a diverse group of stakeholders representing counties, cities, and water districts, as well as the private sector and the regulatory, environmental, and

environmental justice communities who integrate the different interests in the watershed beyond political boundaries. Ensuring all perspectives are heard and valued.

- Distribution of benefits from the implementation of all integrated water resources management activities across the watershed in a fair and equitable fashion. Recognition that upstream conditions affect downstream water quality and quantity.
- OWOW criteria and values are transparent to watershed-wide stakeholders.
- A strong reputation and sufficient capacity within SAWPA staff for strategic facilitation, planning, communication, leadership and community engagement

## **RESOURCE IMPACTS**

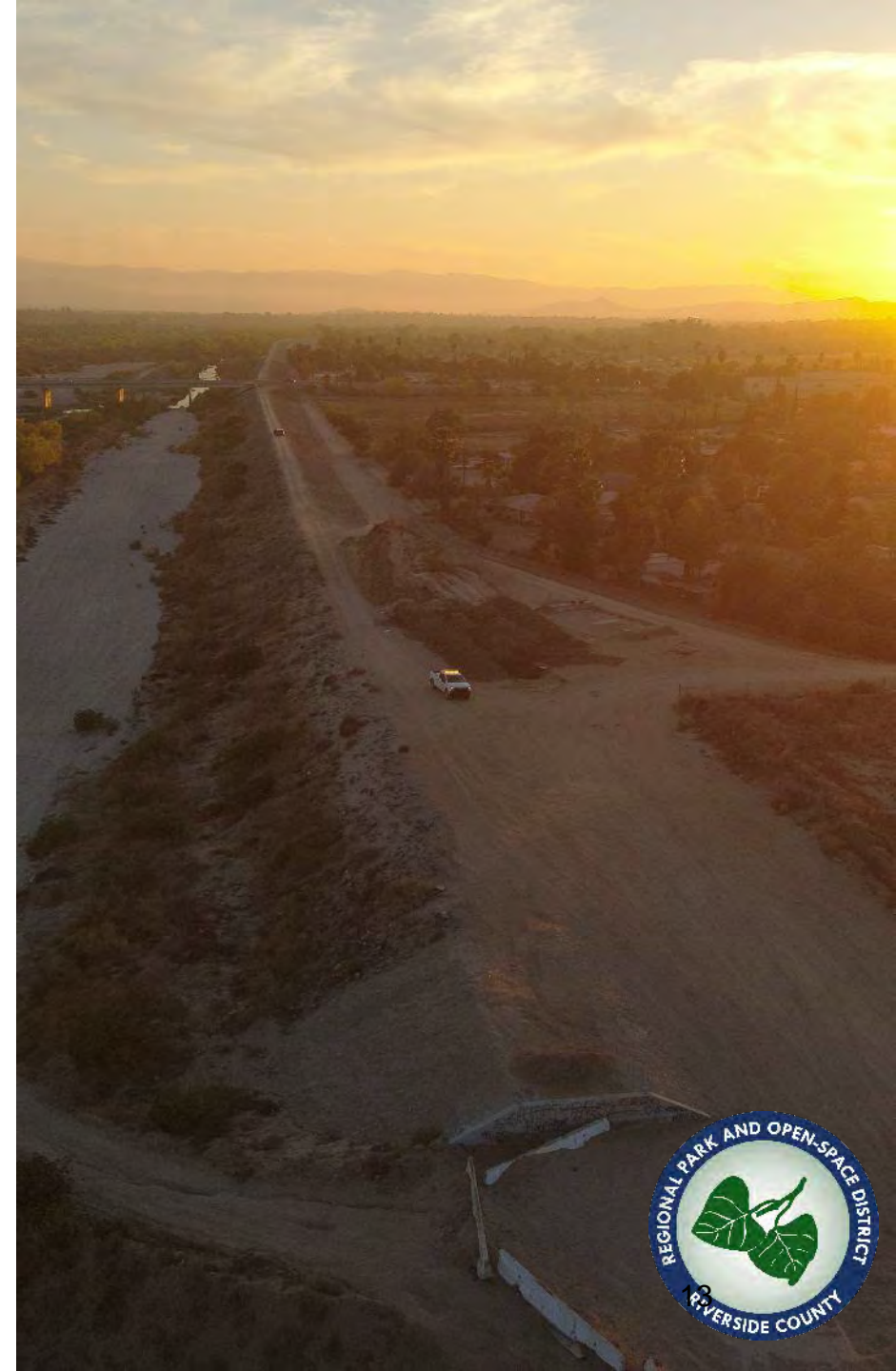
None.

Attachments:

1. PowerPoint Presentation

# **SANTA ANA RIVER HOMELESS SOLUTIONS COLLABORATIVE**

RIVERSIDE COUNTY REGIONAL PARK  
AND OPEN-SPACE DISTRICT



# Established in 2021



## City of Riverside Team

- City Net Street Outreach
- Public Safety and Engagement Team (PSET)

## Corona Team

- City Net Street Outreach
- Corona Police Department Homeless Outreach & Psychological Evaluation (HOPE) Team

## Norco Team

- City Net Street Outreach
- Riverside Sheriff's Dept Special Enforcement Team (SET)

## County Multidisciplinary Team

- Regional Park and Open Space District
- Riverside University Health System – Behavioral Health Homeless Housing Opportunities, Partnership & Education Program (HHOPE) Team
- Housing and Workforce Solutions (HWS) – Workforce Development Center
- HWS - Housing Authority & Continuum of Care (CoC) Program
- Department of Animal Services





## SAR Collaborative Goals

- Rehouse existing encampment residents living in the Santa Ana River Bottom area.
- Remove and mitigate physical encampments.
- Conduct clean-up, maintenance repairs, and habitat restoration.
- Establish effective tools to prevent the reoccurrence of encampments





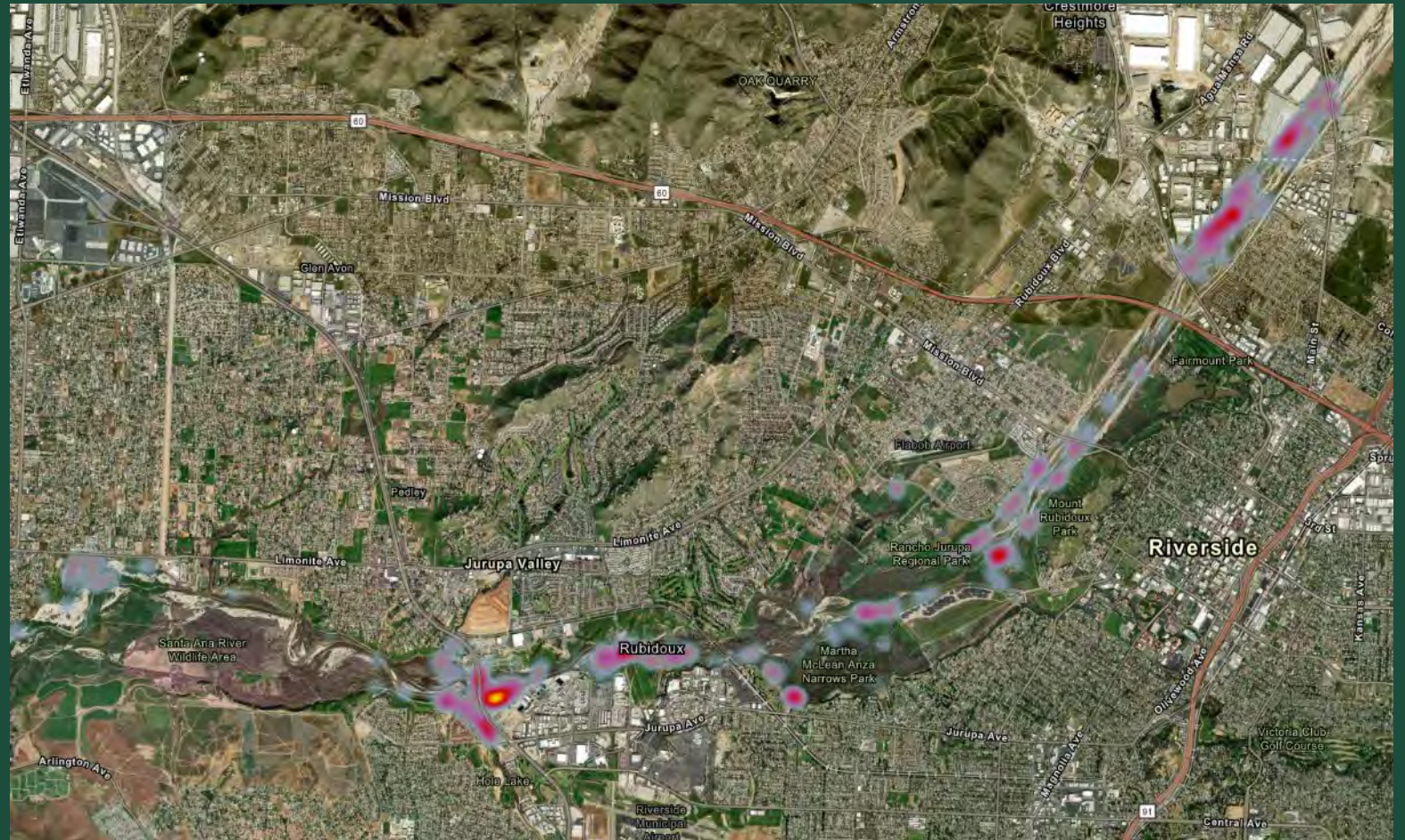
- Encampment Data Collection
- Bridging Services
- Encampment Clean-ups
- Hazardous Condition Announcements
- Collaboration with Law Enforcement
- Outcomes for 2022-2025



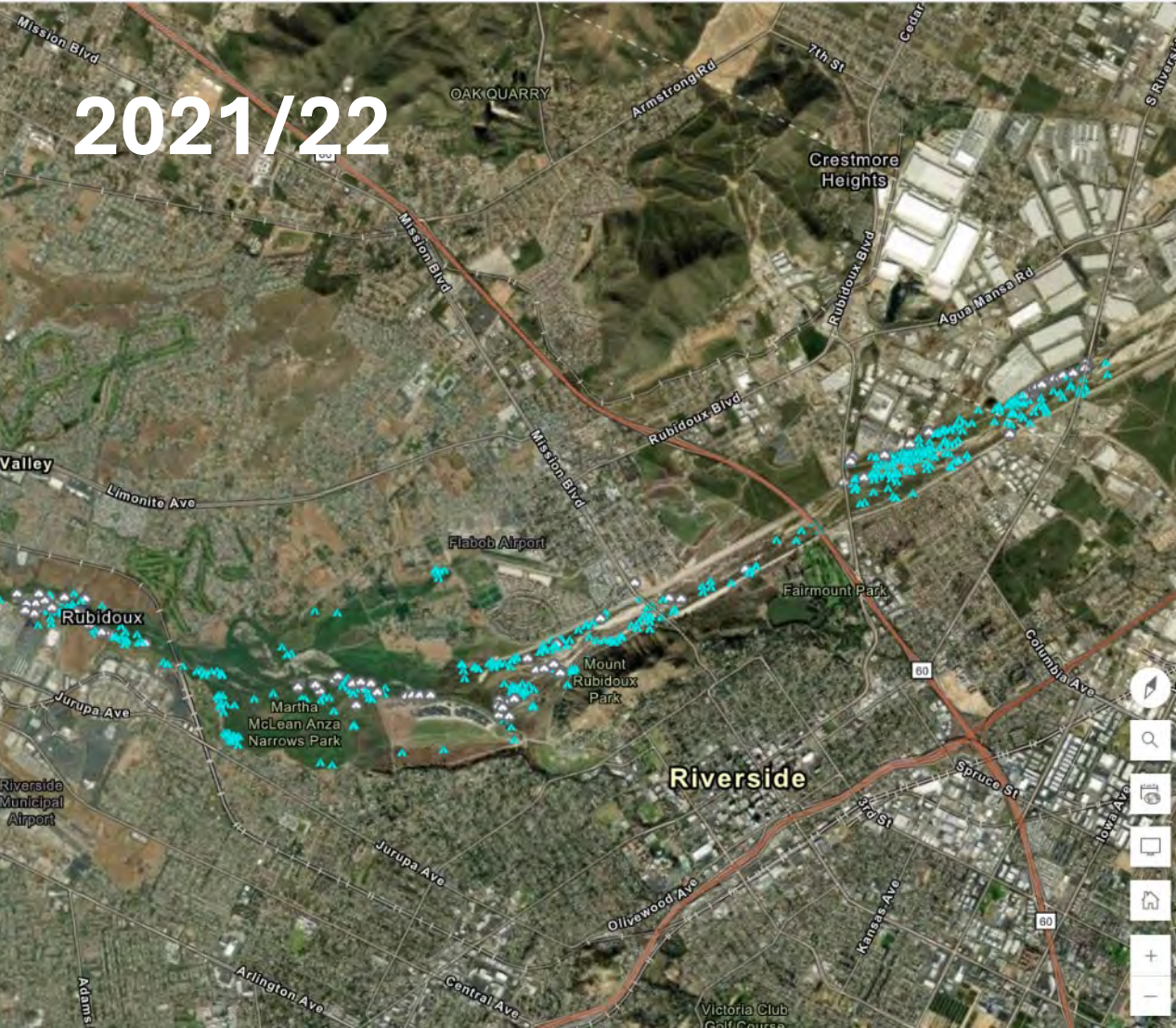
# Data Collecting

- Scout for Encampments
- Identify Hazards
- Bridge Resources
- Track Stats

Recorded data is vital for tracking Hot Spots for new unhoused individuals. Knowing the precise locations of encampments enables better mobilization of services directly to the individuals, specific to their needs. The gathered information is valuable for tailoring services according to the individual's requirements.







## Encampments

- Since RivCoParks started documenting in the SAR, a total of **800** encampments have been plotted.
- A full sweep of the river was conducted in April 2025, and fewer than **80** active encampments are present.



# Bridging Services

- Identifying services/resources needed
- Ensuring constant communication
- Reminding individuals of appointments
- Identifying the most vulnerable to RUHS Mobile Psych Team
- Safekeep of personal property









# Encampment Cleanups

- Before any cleanup, the team offers services and brings in navigators to assist.
  - Removal of Hazardous Materials
  - Properly dispose of debris and abandoned trailers
  - Identify the client's personal property prior to the removal for safekeeping









# Encampment Cleanup - Before





# Encampment Cleanup - After









# Hazardous Condition Announcements

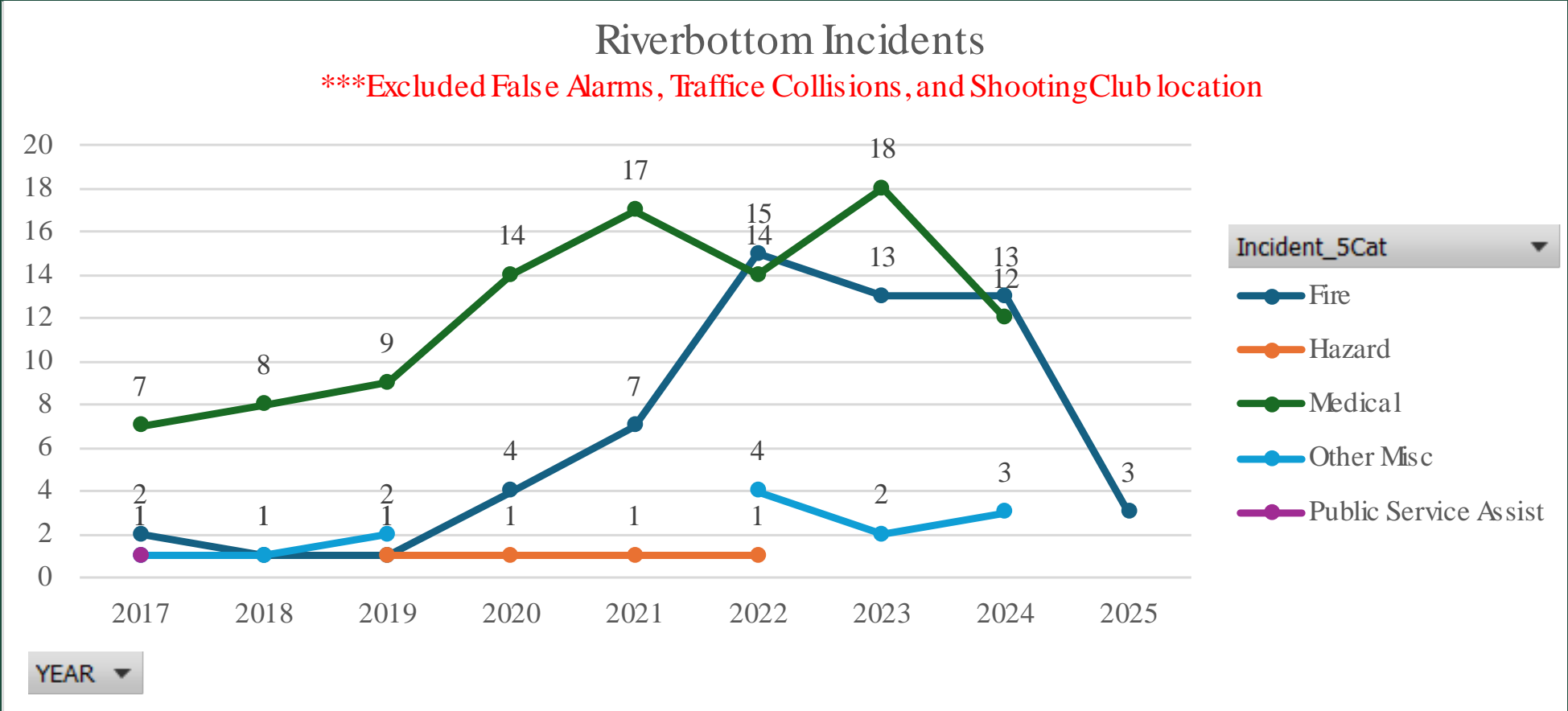
- Rangers staff conduct weather announcements.
  - Offer shelter beds
  - Advise to move to higher ground
- Fire Announcements
  - Help with evacuations
  - Identify access areas







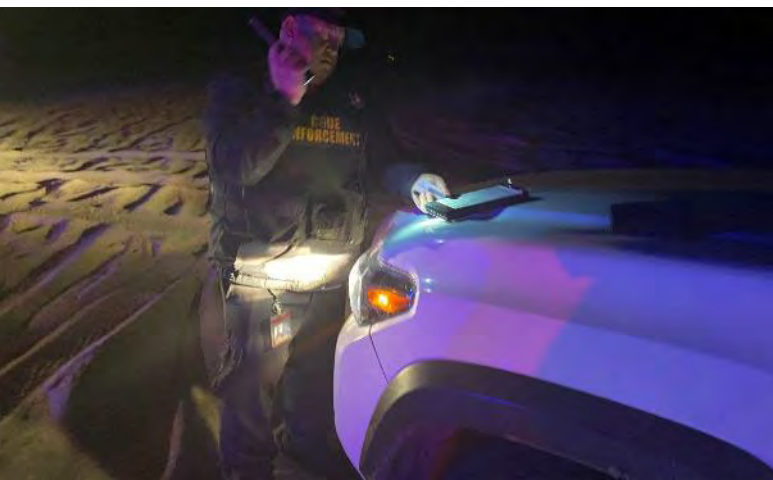
# PUBLIC SAFETY Incidents



# Collaboration with Law Enforcement

- To reduce OHV in the SAR
- Avoid gathering for late-night events
- Reduce criminal activity
  - Stolen vehicles
  - Clients afraid to take help from resources due to being threatened













A REGIONAL WATER AGENCY  
SINCE 1954

## Tributary Restoration

- Hidden Valley and Anza Creek – 95% alignment established and 50% grading complete
- Anza Creek – 80% alignment established, 50% grading complete
- SAR Corridor Area – 6 acres treated for *Arundo donax* and *Tamarix ramosissima* + 30 square feet of Castor Bean treated
- Sunnyslope Creek Area – cleared blockages to improve flow and sucker habitat

# OUTCOMES 2022 - 2025



Encampments  
Cleaned/Restored



Tons of Waste  
Cleaned Up



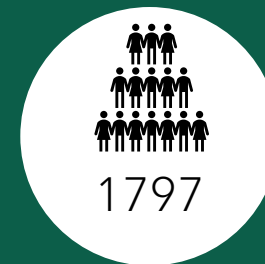
Vehicles Escorted  
Off Property



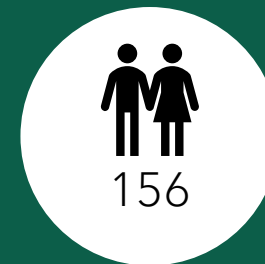
Number of  
Abandoned/Stolen  
Vehicles Removed



Tires Removed



Individuals  
Offered Services



Individuals  
Connected to  
Services



Transitioned to  
Permanent  
Housing



Moved Out of the  
River Bottom



Unduplicated  
Individual  
Engagements



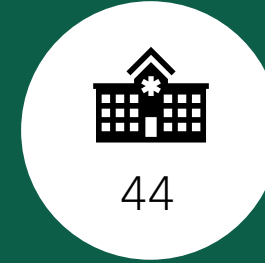
Current Shelter &  
Motel Placements



HHOPE Current  
Caseload



Psychiatry  
Caseload



Clients Housed in  
RR





# Contact Info

SARBshare.org

- Kyla Brown – Parks Director
  - [kylabrown@rivco.org](mailto:kylabrown@rivco.org)
- Oscar Serrato – Natural Resources Manager
  - 951-805-3901 / [Oserrato@rivco.org](mailto:Oserrato@rivco.org)

Page Intentionally Blank

## **OWOW STEERING COMMITTEE MEMORANDUM NO. 2025.5**

**DATE:** May 22, 2025

**TO:** OWOW Steering Committee

**SUBJECT:** One Water One Watershed Project Highlight - Municipal Water District of Orange County

**PREPARED BY:** Marie Jauregui, Project Manager

### **RECOMMENDATION**

Receive and file.

### **DISCUSSION**

Through the One Water One Watershed Steering Committee and Proposition 1 Round 1 Integrated Regional Water Management (IRWM) grant agreement funding, the Municipal Water District of Orange County (MWDOC) was awarded \$2,767,344 for their Regional Comprehensive Landscape Rebate Program (program).

MWDOC and project partners, which include the Inland Empire Utilities Agency (IEUA), Western Municipal Water District (WMWD), Eastern Municipal Water District (EMWD), San Bernardino Valley Water District (SBVMWD), and Big Bear Lake Department of Water & Power (BBLDWP), have implemented this comprehensive water-efficient landscape rebate program. This program has targeted public agency, residential, commercial, industrial, and institutional landscapes throughout the entire Santa Ana River Watershed.

These improvements increase water supply and reliability by saving an estimated 2,697 acre feet per year (AFY) of potable water across the watershed. The improvements include transforming approximately 79 acres of turfgrass to improve on-site stormwater retention and infiltration, controlling irrigation/stormwater runoff, and retrofitting approximately 8,000 acres of landscape to irrigate more efficiently.

Sam Fetter and Rachel Waite-Harvey from MWDOC's Water Use Efficiency Department will provide a project status update to the OWOW Steering Committee.

### **CRITICAL SUCCESS FACTORS**

- Leverage existing information for the benefit of SAWPA, its members, and other stakeholders.
- Active participation of a diverse group of stakeholders representing counties, cities, and water districts, as well as the private sector and the regulatory, environmental, and environmental justice communities who integrate the different interests in the watershed beyond political boundaries. Ensuring all perspectives are heard and valued.
- Distribution of benefits from the implementation of all integrated water resources management activities across the watershed in a fair and equitable fashion. Recognition that upstream conditions affect downstream water quality and quantity.
- OWOW criteria and values are transparent to watershed-wide stakeholders.

- A strong reputation and sufficient capacity within SAWPA staff for strategic facilitation, planning, communication, leadership and community engagement

#### **RESOURCE IMPACTS**

None.

Attachments:

1. PowerPoint Presentation



# One Water One Watershed Project Highlight - Municipal Water District of Orange County

OWOW Steering Committee Meeting

Item No. 5.B.

Ian Achimore

Interim Planning Department Manager

May 22, 2025





The project presented today by the Municipal Water District of Orange County (MWD OC) is one of the nine projects funded through Proposition 1 Round 1 Integrated Regional Water Management (IRWM) Funding.

### OWOW Funding Rounds

| OWOW Funding (DWR* Grant Agreement)         | Grant Funding for Projects | Projects  |
|---|----------------------------|-----------|
| Prop 50                                     | \$24,500,000               | 7         |
| Prop 84, Round 1                            | \$12,000,000               | 13        |
| Prop 84, Round 2                            | \$14,410,184               | 18        |
| Prop 84 Drought                             | \$11,705,258               | 2         |
| Prop 84 2015 Implementation                 | \$61,054,302               | 3         |
| Prop 1, Disadvantaged Community Involvement | \$5,985,000                | 16        |
| Prop 1, Round 1 Implementation              | \$19,934,428               | 9         |
| Prop 1, Round 2 Implementation              | \$27,705,642               | 13        |
| <b>Totals</b>                               | <b>\$177,294,814</b>       | <b>81</b> |

\*IRWM Funding provided via grant agreements with California Department of Water Resources. Cost share is required from projects (note: it is waived/reduced for certain projects that benefit disadvantaged communities).

### Guest Presenters

- Rachel Waite-Harvey, Water Use Efficiency Programs Supervisor
- Sam Fetter, Water Use Efficiency Programs Analyst II







# Prop 1 Round 1 - Regional Comprehensive Landscape Rebate Program

Rachel Waite-Harvey, Water Use Efficiency Programs Supervisor  
Sam Fetter, Water Use Efficiency Programs Analyst II

**Municipal Water District of Orange County**

*SAWPA OWOW Steering Committee – May 22, 2025*





# Regional Comprehensive Landscape Rebate Program

- MWD-OC-led, collaborative effort to unify water use efficiency efforts across the watershed



- Awarded \$2.77 million
- Project goals:
  - Conserve water; create long-term efficiencies;
  - Achieve additional benefits through holistic approach
  - Reduce administrative burdens
  - Create regional cohesion





# Project Overview

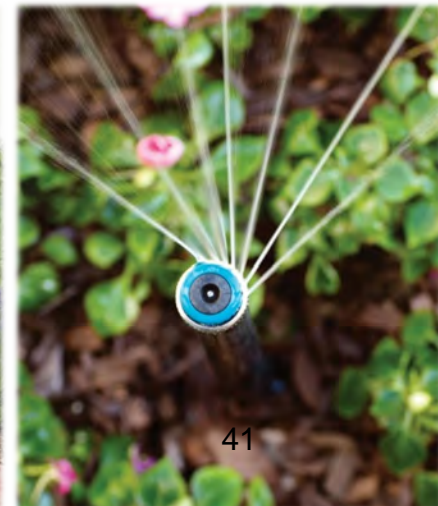


## 💧 Project included multiple water efficiency components

- 💧 Turf Replacement
- 💧 Smart Irrigation Timers
- 💧 High Efficiency Nozzles
- 💧 Drip Irrigation
- 💧 Landscape Design Assistance
- 💧 Industrial Improvements
- 💧 Pressure Regulating Valves
- 💧 Native Plants
- 💧 Rain Barrels

## 💧 Benefits

- 💧 Water savings --> Water supply
- 💧 Reduced irrigation runoff
- 💧 Reduced stormwater runoff
- 💧 Energy savings
- 💧 CO2 emission reductions
- 💧 Public Engagement





# Turf Conversion Projects



7.5 million square feet of turf  
has been converted to CA  
Friendly landscapes!





# Turf & Drip Conversion Projects



1.2 million square feet of inefficiently irrigated landscape has been converted from spray to drip irrigation!





# Water Efficient Landscape Designs

456 homeowners provided landscape design assistance!





**REAL SAVINGS**


This transformation is expected to save

**16.5k** gallons

of water per year!



**AFTER**



**BEFORE**

**City of Huntington Beach**


This OC Resident received a rebate through MWD OC's Turf Removal AND Spray-to-Drip Rebate Programs!

**FEATURES**

- 375 sq. ft. of grass removed
- California Friendly® plant palette
- Stormwater capture feature
- Drip irrigation throughout

**QUESTIONS?**

[turfremoval@mwdoc.com](mailto:turfremoval@mwdoc.com) 714-593-0036 [mwdoc.com/ocresidentalrebates](http://mwdoc.com/ocresidentalrebates)



**PLANT LEGEND**

| CODE | QUANTITY | BOTANICAL                        | COMMON NAME                        |
|------|----------|----------------------------------|------------------------------------|
| NF   | 6        | NAUCLIA DOUGLASSII 'GOLF STREAM' | GOLF STREAM HEAVENLY BAMBOO        |
| NUL  | 4        | NEPETA RACEYOSA 'WALKER'S LOW'   | WALKER'S LOW CATMINT               |
| E    | 3        | BOENNERIA HYBRIDA                | BOENNERIA HYBRIDA                  |
| SS   | 16       | AGAPANTHUS SERPENS 'PINK PUCKER' | PINK PUCKER SENEGAL                |
| AQ   | 4        | AGAPANTHUS AFRICANUS             | LOT OF THE N.E. TO BE TRANSPLANTED |

**SOFTSCAPE NOTES**

- APPROXIMATELY 2500 LBS OF NATURAL ARIZONA AND MALIBU BOULDERS TO HELP EDGE THE DRY RIVER CREEK.
- SUBSTITUTABLY FEATURED: NATURAL DRY RIVER CREEK USING A MIX OF COBBLESTONES TO MATCH THE LANDSCAPE AND ARIZONA GRAVEL TO MATCH THE CLIENT'S EXISTING.
- CONTINUE THE DRY RIVER CREEK AROUND THE EDGE OF THE PROPERTY TO HELP FURTHER RETAIN THE WATER AND ANY POTENTIAL EROSION.

ALL PLANTING AREAS UNSPECIFIED WILL BE MULCHED USING 3" OF RECYCLED CHIP® MULCH.

TOTAL SQUARE FOOTAGE OF REBATE IS 176.

ALL PLANTING AREAS WILL BE IRRIGATED USING COMMERCIAL GRADE NETSPRINK TECHNIQUE. DRIFT SYSTEM PARTS TO INCLUDE PRESSURE REGULATOR AND FILTER, CONNECTORS, STAKES AND NETSPRINK HOSE WITH NON-CLOGGING EMBEDDED IN SLITS EVERY 12". DRIFT HOSE SHALL BE INSTALLED AFTER THE PLANT INSTALLATION IN ORDER TO SUPPLY WATER TO EACH PLANT AND STAKED FOR STABILITY.


TO QUALIFY FOR OUR TURF REMOVAL OR DRIFT REBATES, PLEASE CONSULT OUR PROGRAM'S ELIGIBILITY REQUIREMENTS, THE TERMS AND CONDITIONS AND QUALIFYING PRODUCT LIST (DRIFT) AT [MWD.OC.GOV/PORTAL/ALCORN](http://MWD.OC.GOV/PORTAL/ALCORN).

ALL AREAS MARKED WITH (E) ARE TO REMAIN AS THEY ARE.

**SUSTAINABLE FEATURE: Dry Creek Bed Inspirations**

Dry Creek Beds - A dry creek bed, or dry stream/river, uses stones and/or pebbles to mimic a natural stream and is designed to slow heavy flows from rainfall. The dry creek bed reduces erosion by slowing water, capturing it, and giving it time to soak into the soil, which helps improve the drought tolerance of your garden. A dry creek bed can improve the drainage of your landscape, making it more hospitable to CA native plants, and can be used to increase aesthetics and divide space in your landscape.






**Botanical Name:** *Agave attenuata*  
**Common Name:** Foxtail Agave  
**Plant Type:** Grass-like, evergreen, Perennial  
**Size:** 8 ft. tall  
**Water:** Moderate  
**Notes:** This is a very popular plant in the landscape. It is a very hardy plant and can tolerate a wide range of soil conditions. It is a very low maintenance plant and can be used in a variety of landscape settings.



**Botanical Name:** *Agave attenuata*  
**Common Name:** Foxtail Agave  
**Plant Type:** Grass-like, evergreen, Perennial  
**Size:** 8 ft. tall  
**Water:** Moderate  
**Notes:** This is a very popular plant in the landscape. It is a very hardy plant and can tolerate a wide range of soil conditions. It is a very low maintenance plant and can be used in a variety of landscape settings.



**Botanical Name:** *Agave attenuata*  
**Common Name:** Foxtail Agave  
**Plant Type:** Grass-like, evergreen, Perennial  
**Size:** 8 ft. tall  
**Water:** Moderate  
**Notes:** This is a very popular plant in the landscape. It is a very hardy plant and can tolerate a wide range of soil conditions. It is a very low maintenance plant and can be used in a variety of landscape settings.



**Arizona Power Walkway**



**Netwith Drip Hoops**

**Recycled Premium Chip Mulch**

Chip mulch is made from recycled wood branches and green waste and consists of irregular shaped pieces and has a medium brown/grey color. This mulch decomposes at a rate of 60% per year.





# Industrial Improvements



*(1) NO-DES Flushing Truck*

3 sites made large, customized improvements

1. City of Huntington Beach (MWD OC): NO-DES Truck

1. Unifirst Corp. (IEUA): Industrial Laundry Wastewater Recycling

- A membrane system will recycle at least 35% of wastewater from operations

3. City of Chino (IEUA): Large Scale Soil Moisture Sensors

- 1,100 sensors were installed throughout the city



*(2) Industrial Laundry Recycling*



*(3) Soil Moisture Sensors Controller*

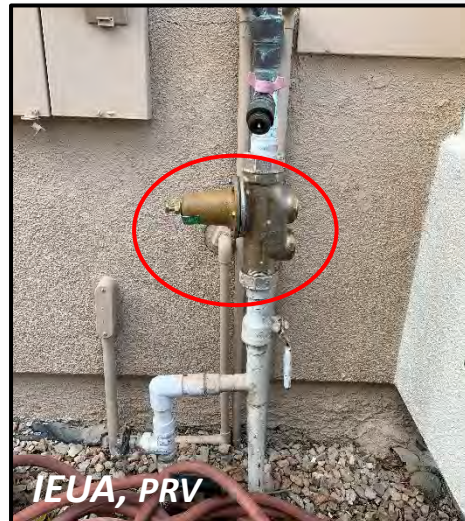


# Other Projects



## Achieved:

- 17,000+ smart irrigation timers installed
- 90,000+ high efficiency nozzles installed
- 587 rain barrels installed
- 116 native plants planted
- 939 PRV sites receiving water pressure improvements





# Marketing Example



## FALL IN LOVE WITH YOUR WATER SMART GARDEN

### Did you know? Fall is the perfect time to plant!

Seeds planted in cooler fall temperatures require less water and allow extra time for young plants to get established before the warm summer months.

For more gardening tips and resources visit:  
[www.OCWaterSmartGardens.com](http://www.OCWaterSmartGardens.com)



#OCisWaterSmart #OCisGardenSmart



## WHEN IN DROUGHT, EVERY DROP COUNTS!



### Spray-to-Drip Program

**Rebates up to \$.50**

*\*per square foot of area converted*

Deliver water directly to your plants and eliminate overspray by converting spray heads to drip irrigation!

### Turf Removal Program

**Rebates up to \$3**

*\*per square foot of grass replaced*

Use up to 70% less water outdoors by updating your lawn to a CA friendly plant palette!



### Weather-Based Irrigation Timer

**Rebates up to \$180**

*\*per timer for residences under one acre or \$35 per station for residences over one acre*

Automatically adjusts your watering schedule based on weather conditions or soil moisture!

### Rotating Nozzles

**Rebates up to \$2 per nozzle**

*\*minimum of 15 nozzles required*

Rotating sprinkler nozzles water more efficiently than traditional spray heads!

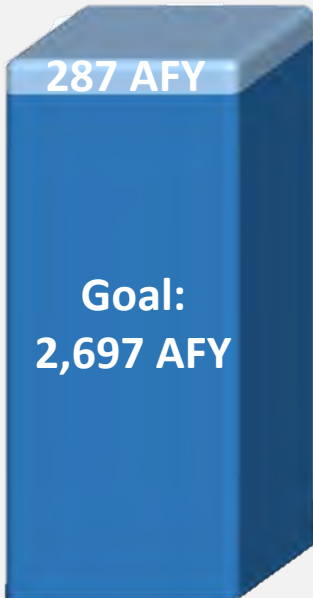


For more ways to save: [www.mwdoc.com/OCResidentialRebates](http://www.mwdoc.com/OCResidentialRebates)



# Project Benefits

## Water Savings



Total Savings:  
2,879 AFY

## Energy Savings

9.5 million  
kilowatt-hours



## Greenhouse Gas Reductions

8,250 tons of CO<sub>2</sub>  
emissions avoided

## Runoff Reductions

970 AFY of dry and  
stormwater runoff  
prevented



## Additional Benefits

- ◆ Drought Preparedness
- ◆ Healthier soils
- ◆ Pollinator habitat
- ◆ Reduced dependency on the Delta
- ◆ Climate resilience
- ◆ Regional self-reliance
- ◆ Making Conservation a CA Way of Life compliance

## Public Engagement

25,000+ water users  
across the watershed  
participated in water-  
savings actions.







Thank you for your attention.  
Please let us know if you have questions.

**Rachel Waite-Harvey**

Water Use Efficiency Programs Supervisor

Phone: (714) 593-5011

Email: [RWaite-Harvey@mwdoc.com](mailto:RWaite-Harvey@mwdoc.com)

**Sam Fetter**

Water Use Efficiency Programs Analyst II

Phone: (714) 593-5004

Email: [SFetter@mwdoc.com](mailto:SFetter@mwdoc.com)



**Physical Address**

18700 Ward Street  
Fountain Valley, CA 92708



**Website**

[www.mwdoc.com](http://www.mwdoc.com)



**Main Office**

(714) 963-3058



**Water Use Efficiency Team**

(714) 593-5036

[TurfRemoval@mwdoc.com](mailto:TurfRemoval@mwdoc.com)

[www.OCWaterSmart.com](http://www.OCWaterSmart.com)



Page Intentionally Blank



## OWOW STEERING COMMITTEE MEMORANDUM NO. 2025.6

**DATE:** May 22, 2025

**TO:** OWOW Steering Committee

**SUBJECT:** Santa Ana River Watershed Climate Adaptation and Resilience Plan – Technical Advisory Committee Meeting #1

**PREPARED BY:** Haley Gohari, Associate Project Manager

### RECOMMENDATION

Receive and file.

### DISCUSSION

Staff developed a strategy to supplement the One Water One Watershed (OWOW) Plan with a Regional Climate Adaptation and Resilience Plan (Plan). The Plan would define watershed-scale climate risks and vulnerabilities, develop climate adaptation strategies, develop a portfolio of planned and potential resiliency projects, connect the equity outcomes for underrepresented communities, and strengthen broad-based partnerships that advance shared interests across the watershed.

Staff applied for grant funding from the Governor's Office of Land Use and Climate Innovation (formerly Governor's Office of Planning and Research) for the Integrated Climate Adaptation and Resiliency Program Regional Resilience Planning and Implementation Grant Program and was chosen to receive grant funding. Over multiple funding rounds, the RRGP will invest funding into regions advancing resilience and responding to their regions' greatest climate risks through three major activities: capacity building, planning (including identifying climate resilience priorities), and project implementation.

The Plan would advance multi-beneficial projects with a diverse range of stakeholders with a common goal to increase resilience in the watershed. The regional Plan would daylight the interconnectivity of individual and regional projects and demonstrate the upstream/downstream benefits while building on types of stakeholders engaged in the plan development. The regional Plan would also consider affordability risks and under-represented communities related to climate vulnerabilities and establish a clear connection between resilience initiatives and equitable outcomes. This effort would provide benefits to a wide array of stakeholders (member agencies, utilities, cities, communities) and provide a mechanism for future funding from a variety of funding sources for implementation of projects that advance watershed resilience.

The roles of each entity are described below:

- SAWPA (lead applicant) brings a proven track record of working with public agencies in the region; developing, tracking and implementing large-scale grant programs; and supporting integrated water resources management in the SARW. SAWPA will provide administrative and technical oversight of the project.

- ISC3 (co-applicant) brings a proven track record of connecting and building the capacity of local government, utilities, and CBOs across the region. ISC3 is responsible for managing CBOs and soliciting community feedback in the watershed.
- Soboba (co-applicant) brings a proven track record supporting integrated water resources management planning and engaging with tribal communities. Soboba will provide the tribal perspective on climate vulnerabilities, underlying risk factors, and identifying adaptation strategies in support of tribal communities.
- Woodard & Curran (Consultant): facilitate public agency engagement and provide support to co-applicants, develop plan by performing data requests and implementing an engagement strategy.

Since our last update, the Watershed Resilience Technical Advisory Committee held its first meeting on April 28, 2025. The TAC is a group of representatives from public agencies across the watershed that will provide oversight and feedback to guide the development of the CARP through progress updates, guidance and technical input in quarterly meetings. The TAC is comprised of:

| Sector                       | Entity   |
|------------------------------|--|
| Lead Grantee                 | Santa Ana Watershed Project Authority (SAWPA)                |
| Planning Manager MA          | Orange County Water District                                 |
| Planning Manager MA          | San Bernardino Valley Municipal Water District               |
| Planning Manager MA          | Eastern Municipal Water District                             |
| Planning Manager MA          | Inland Empire Utilities Agency                               |
| Planning Manager MA          | Western Municipal Water District                             |
| Riverside County/Water       | Riverside County Flood Control & Water Conservation District |
| Orange County/Water          | Orange County Watersheds                                     |
| San Bernardino County/ Water | San Bernardino County Flood Control District                 |
| Ag & Natural Resources       | Chino Basin Watermaster Agricultural Operator Pool           |
|                              | Riverside County Farm Bureau                                 |
| Energy                       | Southern California Edison                                   |
| Forest/State                 | Connecting Wildlands and Communities Lab at SDSU             |
| Regional                     | Western Regional Council Of Governments                      |
| Transportation               | CalTrans   |
| Regional                     | Metropolitan Water District of Southern California           |
| RWQCB (ex-officio)           | Regional Water Quality Control Board - Santa Ana (Region 8)  |



The objectives for TAC Meeting #1 were to:

- Provide an overview of the CARP Process.
- Describe the role of the TAC.
- Explain goals and benefits of participation.
- Provide an overview of engagement process, including:
  - Workshops and Surveys, and,
  - Flow of Information.
- Begin Watershed Resilience Visioning and Goal Setting for the CARP.
- Public Agency Questionnaire (Data Request #1).

TAC Meeting #2 is scheduled for Monday, July 28, 2025 and will be focused on the Public Agency Engagement Plan and Surveys.

### **CRITICAL SUCCESS FACTORS**

- Leverage existing information for the benefit of SAWPA, its members, and other stakeholders.
- Active participation of a diverse group of stakeholders representing counties, cities, and water districts, as well as the tribal communities and the regulatory, community-based, and environmental justice communities who integrate the different interests in the watershed beyond political boundaries. Ensuring all perspectives are heard and valued during the development of the regional climate adaptation and resilience plan.
- SAWPA has a strong reputation and sufficient capacity within SAWPA staff for strategic facilitation, planning, communication, leadership, and community engagement.

### **RESOURCE IMPACTS**

The Santa Ana River Watershed Project Authority has been selected as a Round 1 Grantee for the Regional Resilience Grant Program (RRGP) award of \$644,190 for the Santa Ana River Watershed Climate Adaptation and Resilience Plan. Up to \$290,000 is available from cost savings from the Water Use Efficiency task under SARCCUP (Prop 84). Funding for consultant cost is included in the FYE 2026 and FYE 2027 budgets.

Attachments:

1. PowerPoint Presentation

Page Intentionally Blank





SANTA ANA WATERSHED  
PROJECT AUTHORITY

# Santa Ana River Watershed Climate Adaptation and Resilience Plan – Technical Advisory Meeting #1

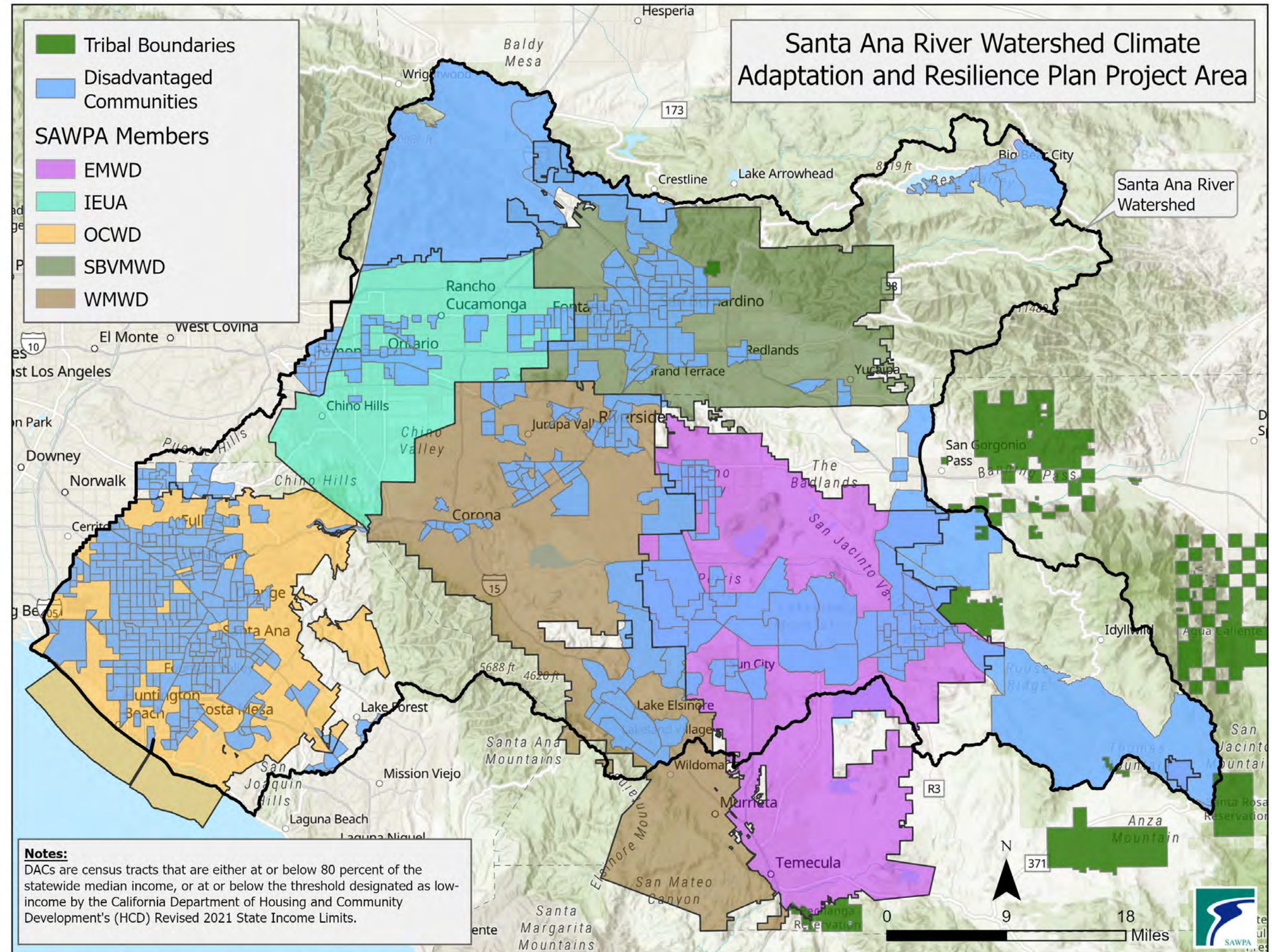
OWOW Steering Committee Meeting  
Item No. 6.C.

Haley Gohari  
Associate Project Manager  
May 22, 2025



# Agenda

- CARP Background
- Watershed Resilience Technical Advisory Committee (TAC)
- TAC Role
- TAC Meeting #1
- CARP Overview Schedule



P:\Projects\RachelGray\DACTribeMA\DACTribeMA.aprx LoDACTribe SW-3331



# Santa Ana River Watershed Climate Adaptation and Resilience Plan (CARP)

## CARP Grant:

- **\$644,190 grant** under the Governor's Office of Land Use and Climate Innovation

## CARP

- Strategic Framework
- Outlines actions and measures to enhance the climate resilience of a watershed
- Address the climate risks and vulnerabilities
  - Water resources, ecosystems, and communities
  - Integrating adaptive management practices

## Regional CARP

- Community informed
- Stakeholder driven
- Implementation focused



Advance watershed resiliency



Define watershed-wide climate risks and vulnerabilities



Develop local and regional climate adaptation strategies



Enhance multi-jurisdictional collaboration



Support future funding of member agency projects, other stakeholder projects, and regional projects

# Watershed Resilience Technical Advisory Committee (TAC)

| TAC                         | Entity  |
|-----------------------------|---|
| Planning Manager MA         | Orange County Water District  |
| Planning Manager MA         | San Bernardino Valley Municipal Water District  |
| Planning Manager MA         | Eastern Municipal Water District  |
| Planning Manager MA         | Inland Empire Utilities Agency  |
| Planning Manager MA         | Western Municipal Water District  |
| Tribal                      | Soboba Band of Luiseño Indians  |
| Community                   | Inland Southern California Climate Collaborative (ISC3)/<br>University of California, Riverside |
| Riverside County/Water      | Riverside County Flood Control & Water Conservation District                                    |
| Orange County/Water         | Orange County Watersheds  |
| San Bernardino County/Water | San Bernardino County Flood Control District  |
| Ag & Natural Resources      | Chino Basin Watermaster Agricultural Operator Pool  |
|                             | Riverside County Farm Bureau  |
|                             | Western Riverside County Agricultural Coalition (WRCAC)   |
| Energy                      | Southern California Edison  |
| Forest/State                | Connecting Wildlands and Communities (SDSU) Conservation Lab                                    |
| Regional                    | Western Regional Council Of Governments   |
| Transportation              | CalTrans  |
| Regional                    | Metropolitan Water District of Southern California  |
| RWQCB (ex-officio)          | Regional Water Quality Control Board - Santa Ana (Region 8)                                     |



# Technical Advisory Committee (TAC)

## Role

---

- Role
  - Advisory
  - Provide progress updates, guidance, and technical input as work is completed
  - Review Public Agency Engagement
  - Quarterly
- Public Agency Engagement
  - Data Requests/Questionnaire
  - Member Agency Service Area Workshops
  - Surveys



# TAC Meeting #1

- Held Virtually on April 28, 2025
- Introductory – CARP Overview
- TAC Meeting Schedule
- Began Resilience Vision and Goal Setting
- Data Request #1: Public Agency Questionnaire - Reference Materials Review
  - Deadline for response is May 15, 2025
- Requested Alternate Contact for TAC



**Santa Ana Watershed Project Authority**  
Over 50 Years of Innovation, Vision, and Watershed Leadership

**Santa Ana River Watershed Climate Adaptation and Resilience Plan  
Technical Advisory Committee Meeting #1  
April 28, 2025 – 1:00 pm – 2:00 pm**

**AGENDA**

- Objectives:
- Provide an overview of the CARP process.
  - Describe Role of the TAC.
  - Explain goals and benefits of participation.
  - Provide overview of engagement process, including:
    - Workshops and surveys
    - Flow of information
  - Begin Watershed Resilience Visioning and Goal Setting for the CARP.
  - Public Agency Questionnaire:
    - Respond by May 15, 2025
    - Send in responsive documents requested (Reference materials) to support the CARP process.

| Item  | Presenter                        | Time   |
|---|----------------------------------|--------|
| 1. Welcome  | Jeff Mosher                      | 5 min  |
| 2. Introductions<br><i>Icebreaker: What climate risk is the most impactful to your services/service area?</i>                     | All                              | 5 min  |
| 3. TAC Meeting Schedule   | Haley Gohari                     | 5 min  |
| 4. CARP Overview  | Haley Gohari                     | 5 min  |
| 5. Benefits for Your Agency and the Watershed   | Jeff Mosher & Haley Gohari       | 10 min |
| 6. Exercise: Resilience Vision and Goals Setting  | Haley Gohari & Katie Evans (W&C) | 15 min |
| 7. Public Agency Questionnaire  | Haley Gohari                     | 10 min |
| 8. Next Steps   | Haley Gohari                     | 5 min  |
| 9. TAC Meeting #2: Monday, July 28, 2025 1:00 p.m. – 2:00 p.m.<br>Topic for Next Meeting: Public Agency Engagement Plan & Surveys |                                  |        |
| 10. Adjourn   |                                  |        |

Mike Gardner  
Chair  
Western Municipal  
Water District

Gill Bolash  
Vice Chair  
San Bernardino Valley  
Municipal Water District

Philip E. Paulo  
Secretary-Treasurer  
Eastern Municipal  
Water District

Jasmin A. Hall  
Commissioner  
Inland Empire  
Utilities Agency

Denis Birdsall  
Commissioner  
Orange County  
Water District

Jeffrey J. Mosher  
General Manager



# Data Request #1: Public Agency Questionnaire

---

- Purpose
  - Streamline consultant work by leveraging the results and knowledge gained from previous technical work to focus CARP grant funds on cohesive collaboration in developing, implementing, and tracking climate resilience strategies.
- Approach
  - SAWPA is currently identifying and procuring documents
    - Inventory list will be shared with data request
  - Request for planning and related documents that contains:
    - Overview of climate adaptation efforts (but not mitigation efforts)
    - Description of climate risks and/or vulnerabilities
    - Proposed concepts or planned projects that would address any risk/vulnerability
- Schedule
  - Response requested by May 15, 2025

# CARP Overview Schedule





# Questions

---

Haley Gohari  
Santa Ana Watershed Project Authority  
Office (951) 354-4250  
hgohari@sawpa.gov  
sawpa.gov

