

**Legend**

- Priority 1: Frequent REC1 Use
- Priority 2: MSAR TMDL
- ▲ Priority 3: MSAR TMDL
- ◆ Priority 4: REC-2 only

# Regional Bacteria Monitoring Program Project Update

Presentation to the Regional Monitoring Program Task Force

October 16, 2024

Presentation by Steve Wolosoff, GEI Consultants



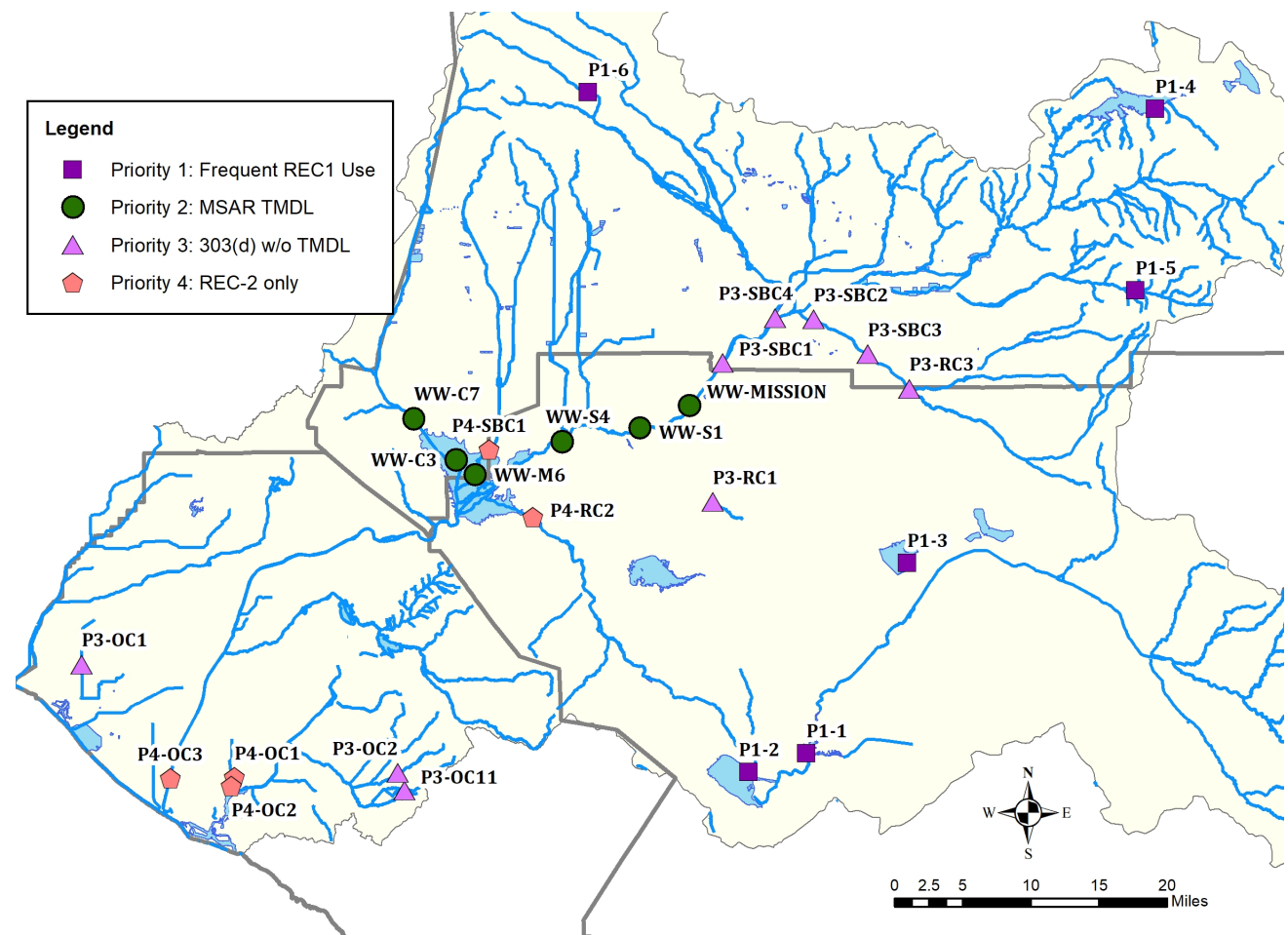
# Agenda

- Monitoring Program Update
- Web Dashboard Migration
- 2024 Dry Season Results
- Next Steps



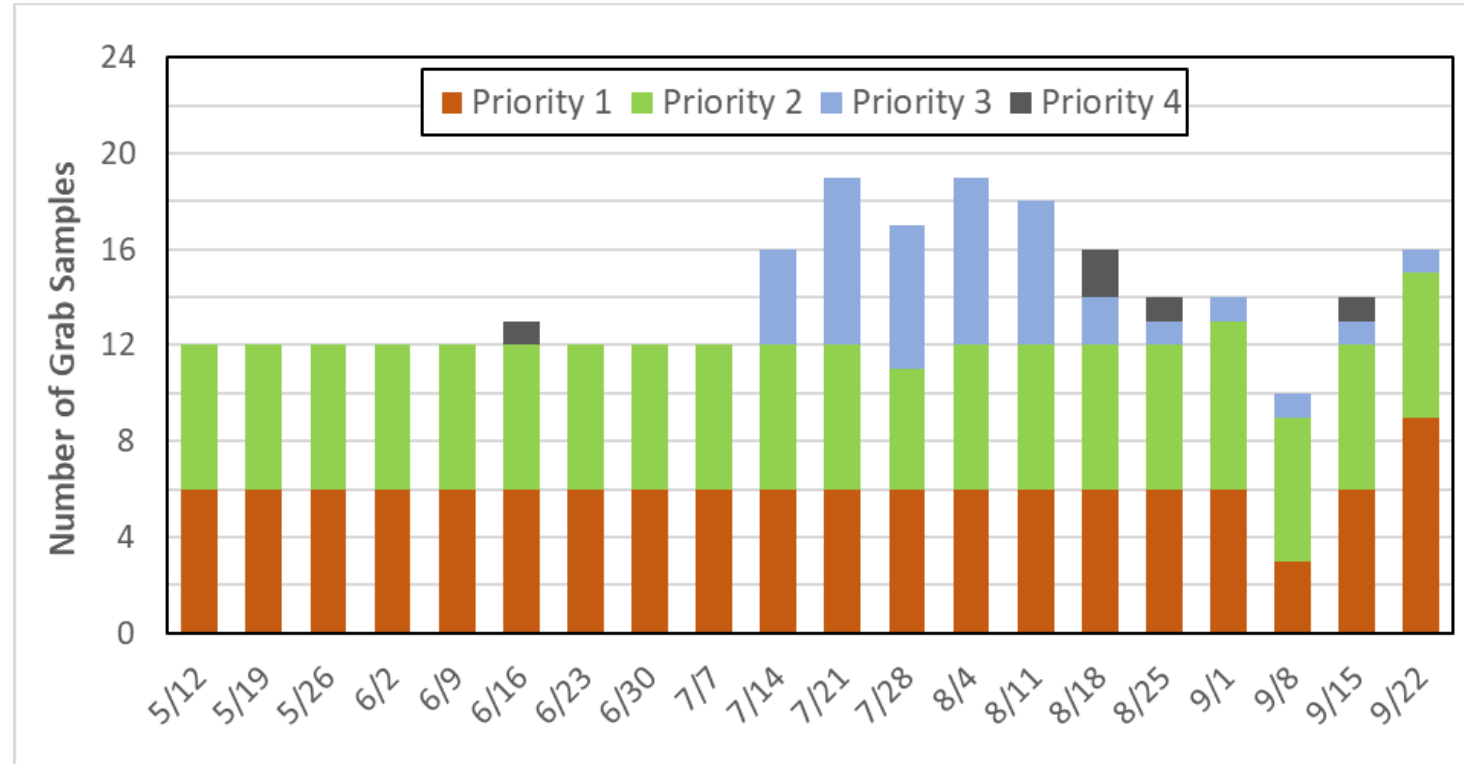
# Monitoring Program

- Site locations and frequency of sampling broken into four priorities
  1. Waterbody Segments with Greatest Risk of Exposure
  2. Waters Subject to an Existing TMDL
  3. Bacteria Impaired Waters Without an Existing TMDL
  4. Waters Re-Designated as REC2 Only
- Work Plan updated for 2024-2027 effort



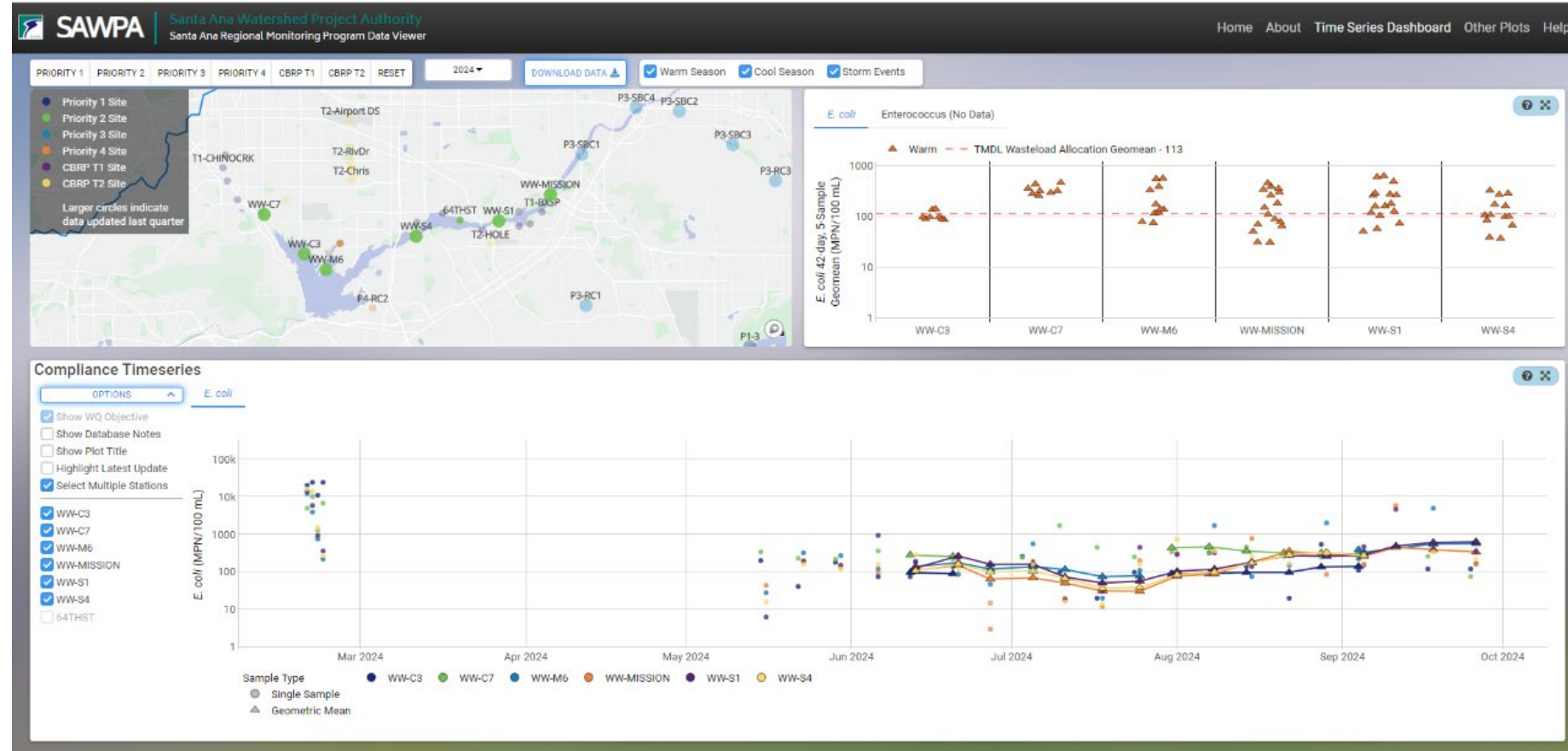
# Monitoring Program

- Samples collected over 20-week dry season period
  - Field crews unable to locate dry weather flow in SAR Reach 4
  - Bear siting on August 1 at Mill-Cucamonga Creek
  - Fires prevented access to sites at Lytle & Mill Creeks and Big Bear Lake during Sept 8-12 week
- All missed samples were resampled at later dates within the dry season period



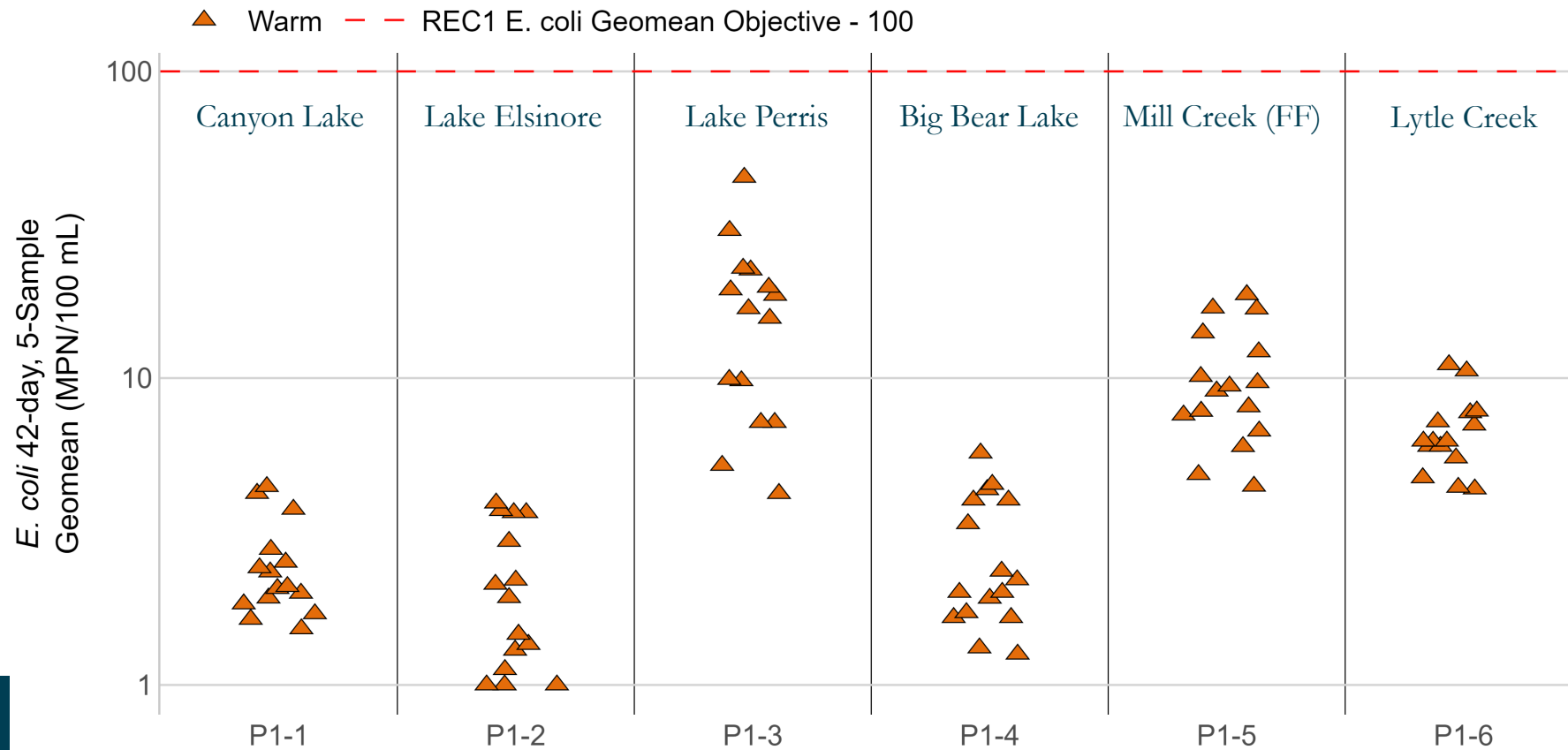
# Data Dashboard

- Migration from CDM Smith to SAWPA domain completed
- Streamlined data entry



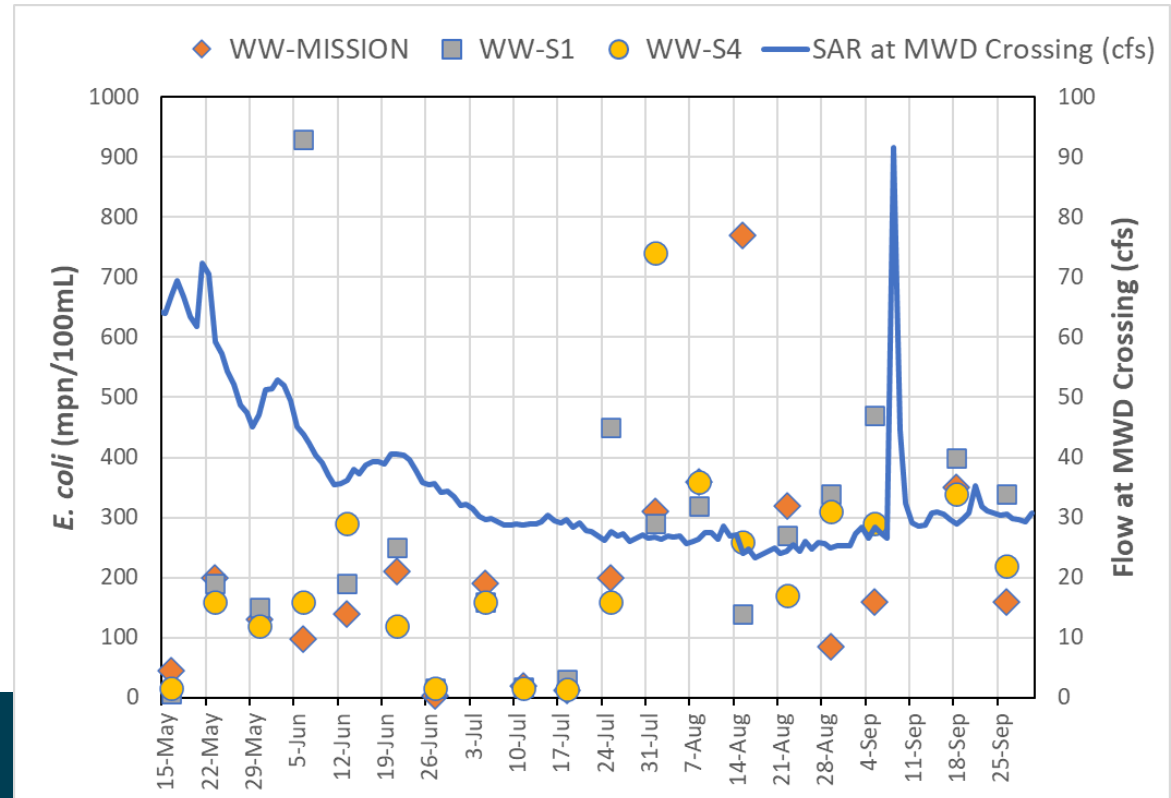
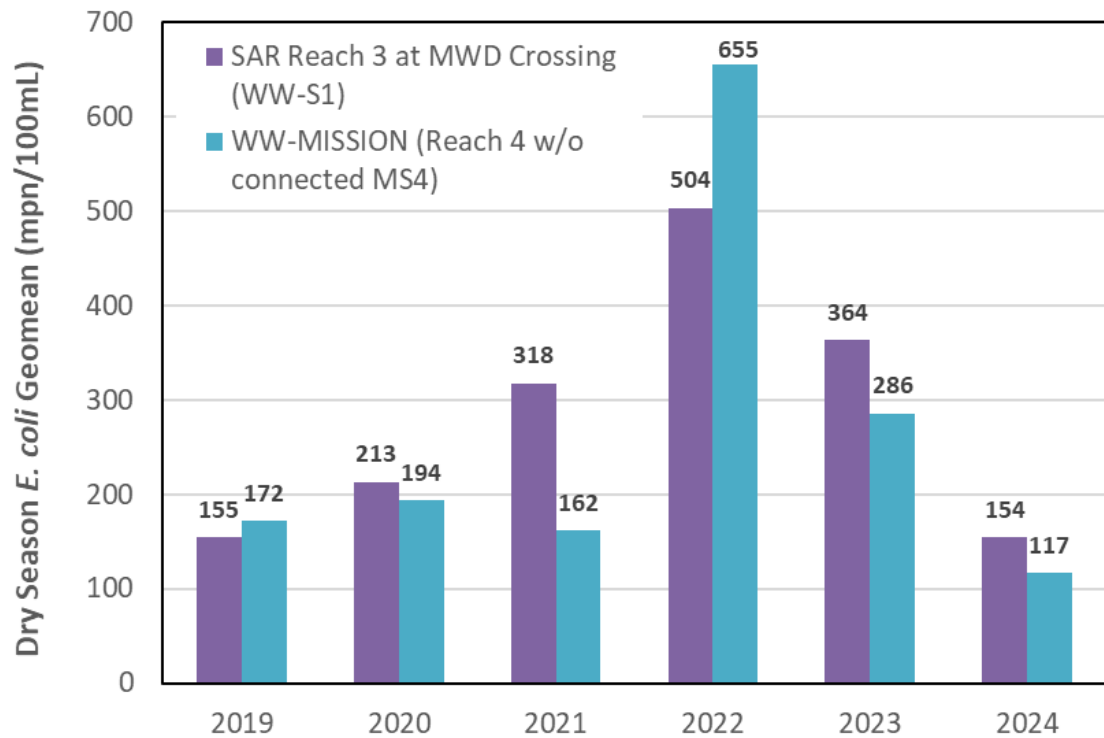
# Priority 1 Sites

- No geomean WQO exceedances



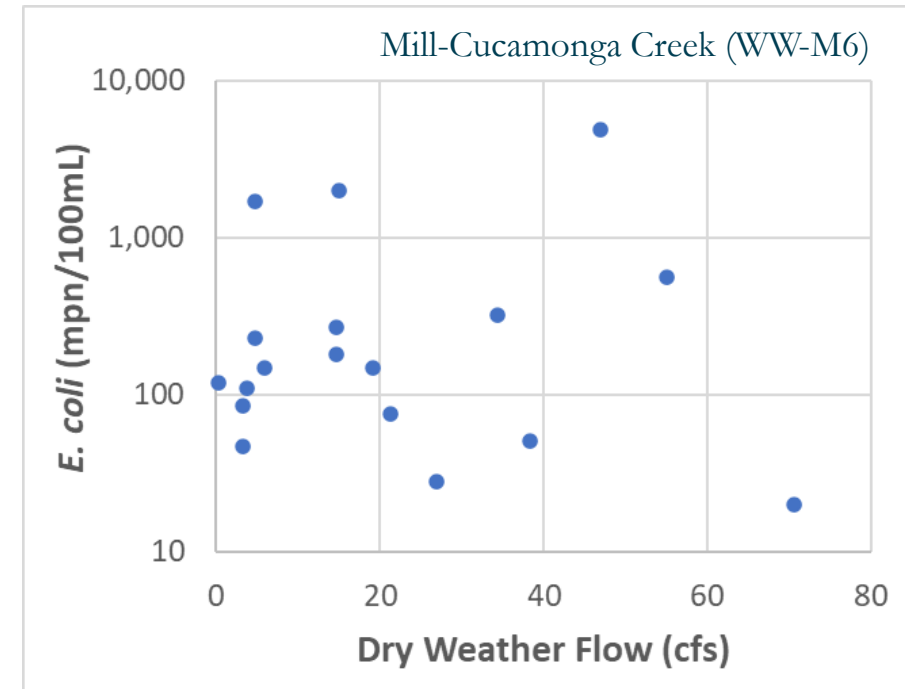
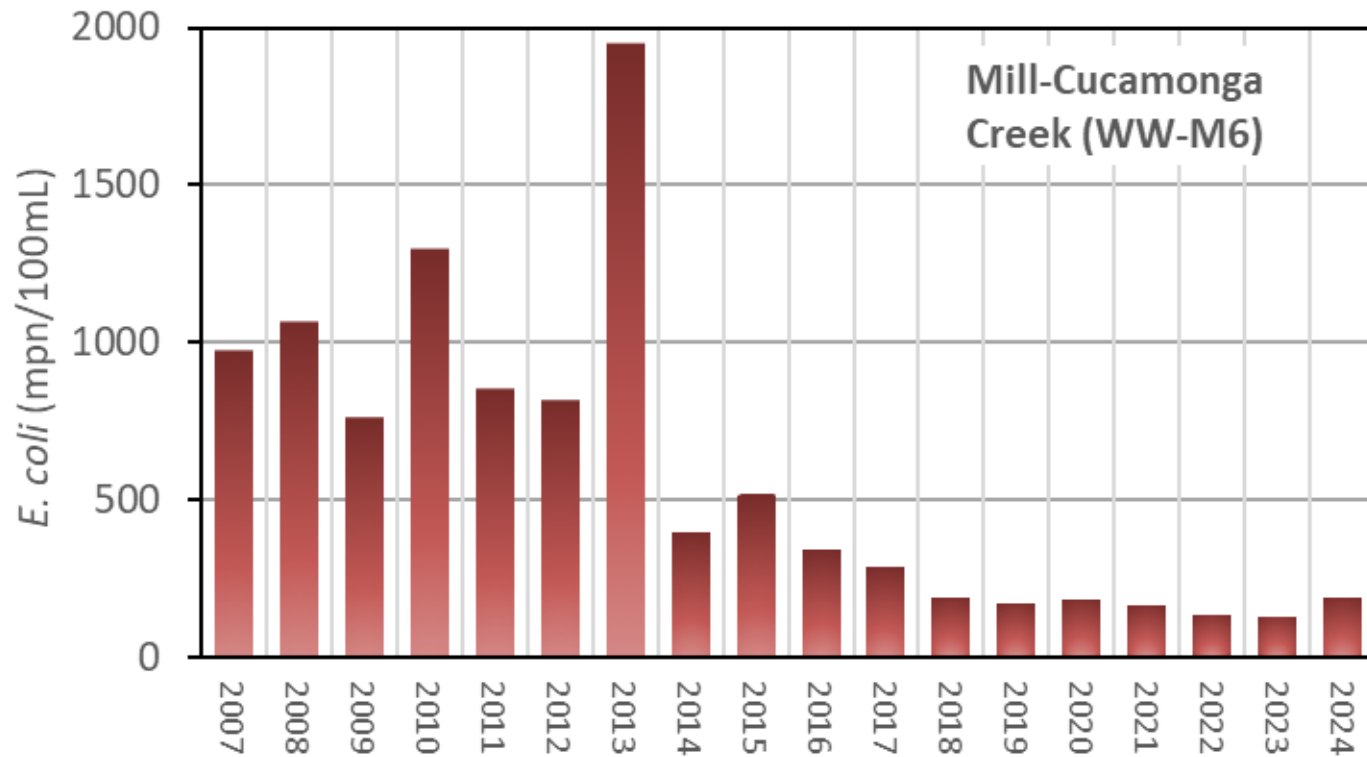
# Santa Ana River Reach 3

- Several events with very low concentrations – not related to mainstem flow
- Excludes warm season samples within 3 days of wet weather event



# Mill-Cucamonga Creek

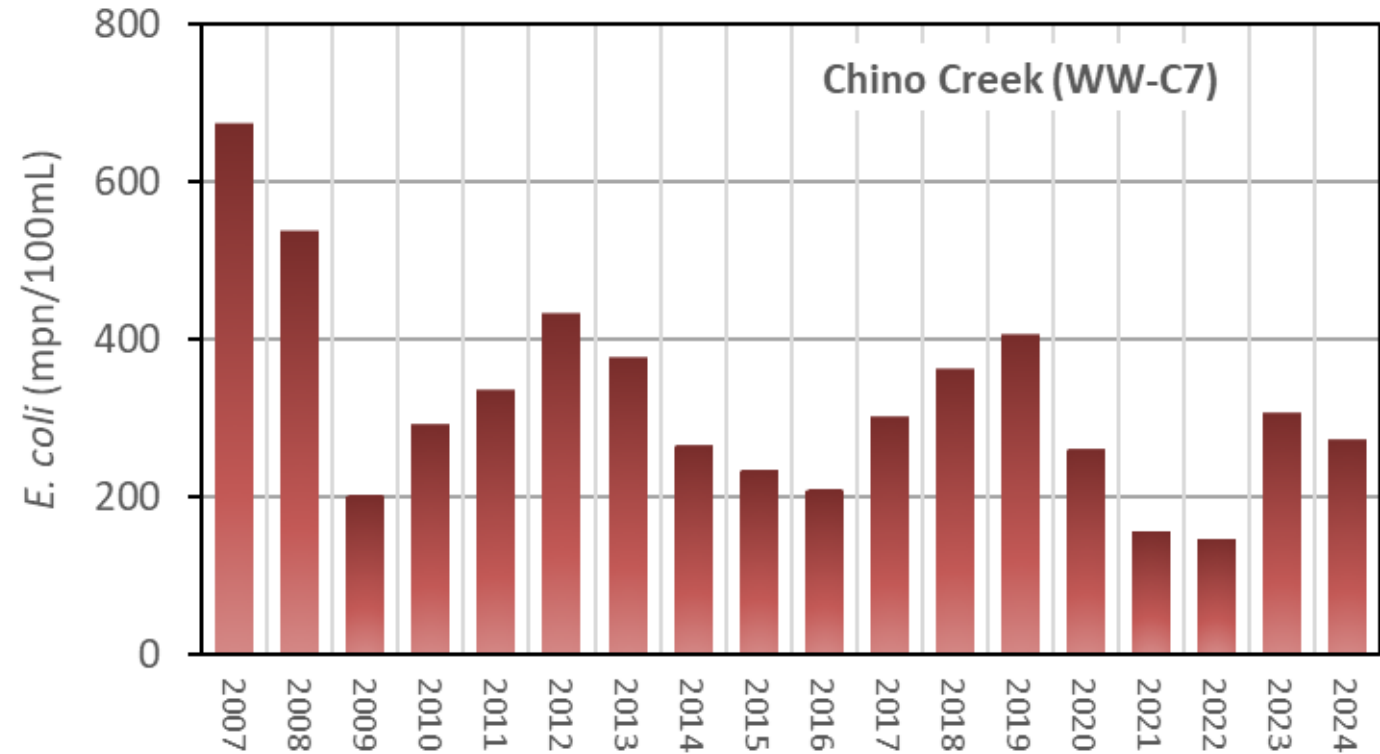
- Wide variability in *E. coli* and DWF rates with no apparent relationship
- More in-depth analysis alongside SBCFCD 10-week surveys key component of dry weather CBRP implementation





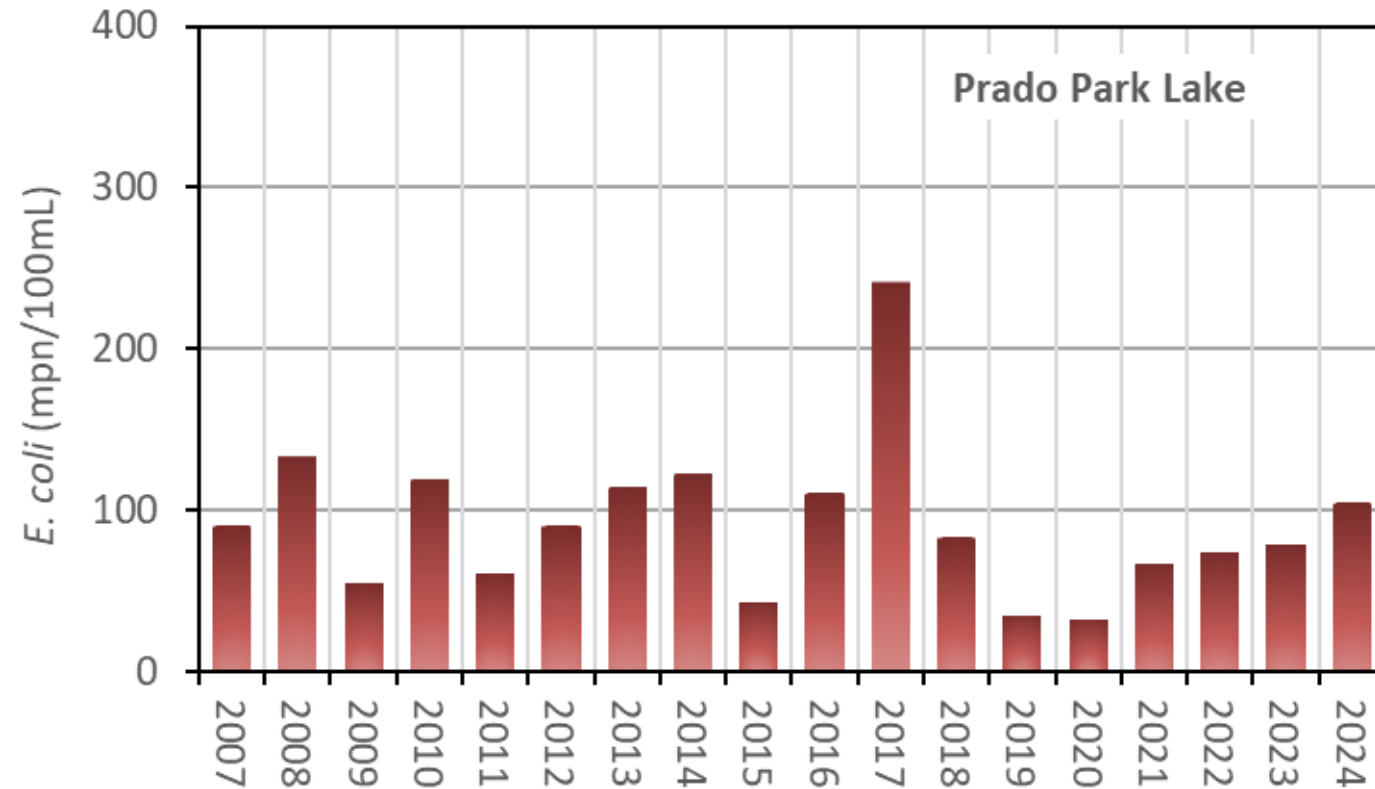
## Chino Creek

- TMDL compliance monitoring location just downstream of IEUA Carbon Canyon WRF
- More in-depth analysis alongside SBCFCD 6-week surveys key component of dry weather CBRP implementation



## Prado Park Lake

- 2024 was like recent years with TMDL WLA achieved most of the time in the dry season



## Priority 3 Sites

- Priority 3 sites continue to be impaired
- High flow in Reach 3 of San Timoteo Creek retained in recharge basins – dry condition at site in Reach 2 (P3-SBC3) during 3 events, possible also wet weather capture

ID	Site	Historical Range (2016-2023)	2024 Geomean
P3-RC1	Goldenstar Creek at Ridge Canyon Drive	71 - 631	631
P3-RC3	San Timoteo Creek Reach 3	170 – 1,355	1,355
P3-SBC3	San Timoteo Creek Reach 2	414 - 486	10,600
P3-SBC2	San Timoteo Creek Reach 1A	40 – 3,072	3,015
P3-SBC4	Warm Creek	236 – 4,689	633
P3-SBC1	Santa Ana River Reach 4	48 – 143	117
P3-OC1	Bolsa Chica Channel	22 – 51	51
P3-OC11	Serrano Creek	132 – 1,572	1,452

# Anti-degradation Sites (Priority 4)

- No exceedances in 2024



ID	Site	75 <sup>th</sup> %ile Target	2024 Sample
P4-SBC1	Cucamonga Creek at Hellman Ave	1,385 as <i>E. coli</i>	400
P4-RC2	Temescal Creek at Lincoln Ave:	725 as <i>E. coli</i>	73
P4-OC1	Santa Ana Delhi at Irvine Ave:	1,067 as <i>E. coli</i>	613
P4-OC2	Santa Ana Delhi at Tidal Prism	464 as Enterococcus	<10
P4-OC4	Greenville-Banning Channel	64 as Enterococcus	<10



## Upcoming Work

- Cool season sampling, wet weather event
- Quality review
- Data management
- Draft report
- Coordination with MSAR TMDL activities

