



SANTA ANA WATERSHED
PROJECT AUTHORITY

Integrated Climate Adaptation and Resiliency Program Regional Resilience Planning and Implementation Grant Program: Development of the Santa Ana River Watershed Climate Adaptation and Resilience Plan - Workflow

Agenda Item No. 6.A

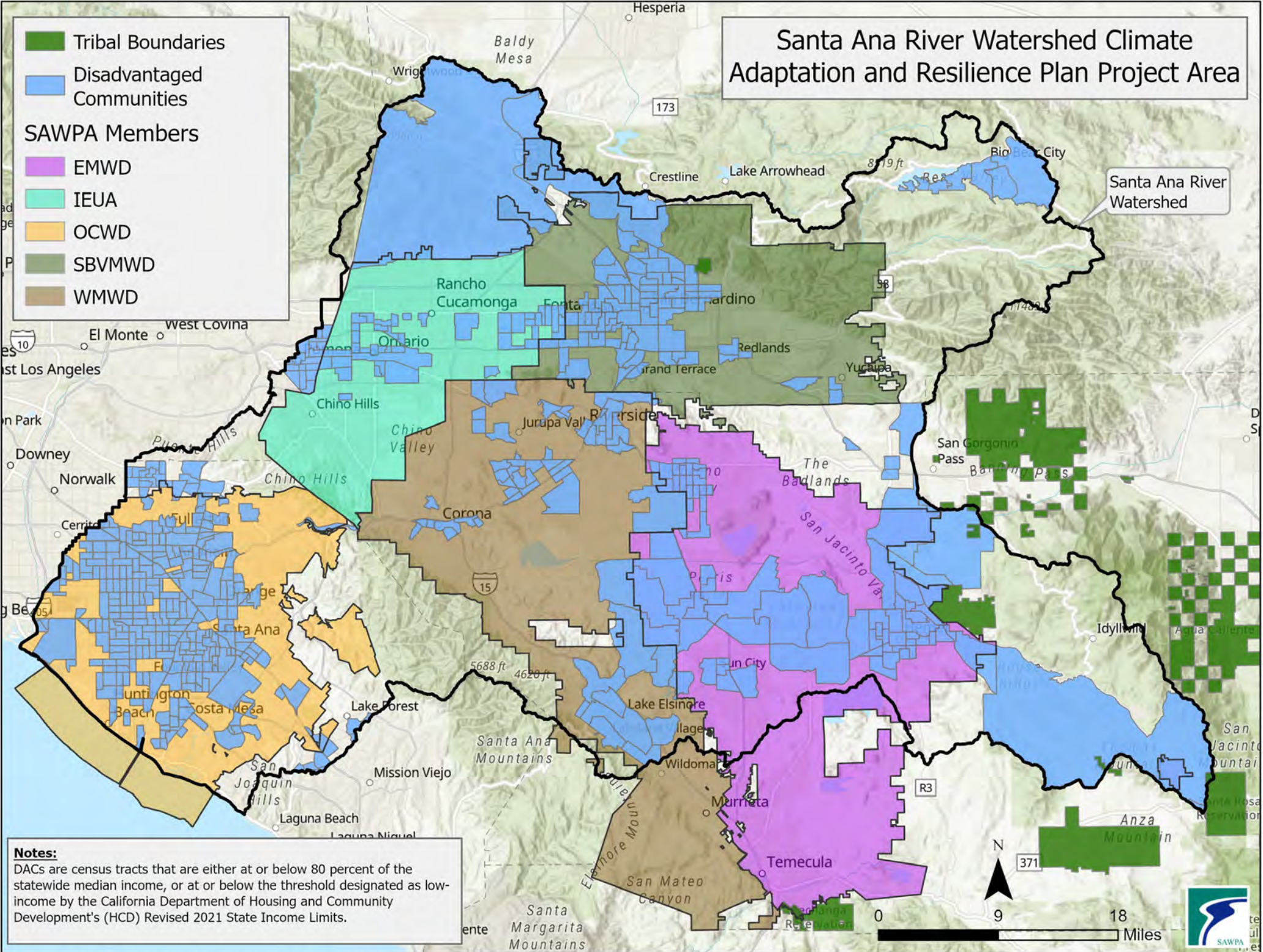
September 3, 2024

Rachel Gray

Water Resources and Planning Manager

Agenda

- Purpose of CARP
- Benefits of CARP
- Roles
- Project Components
- Project Deliverables



P:\Projects\RachelGray\DACTribeMA\DACTribeMA.aprx LoDACTribe SW-3331

Purpose

- Develop a community-informed, stakeholder-driven, and implementation focused Climate Adaptation and Resilience Plan in support of funding regional planning and implementation projects that address the impacts of climate change risks

Benefits of CARP



Advance watershed resiliency



Define watershed-wide climate risks and vulnerabilities



Develop local and regional climate adaptation strategies



Enhance multi-jurisdictional collaboration

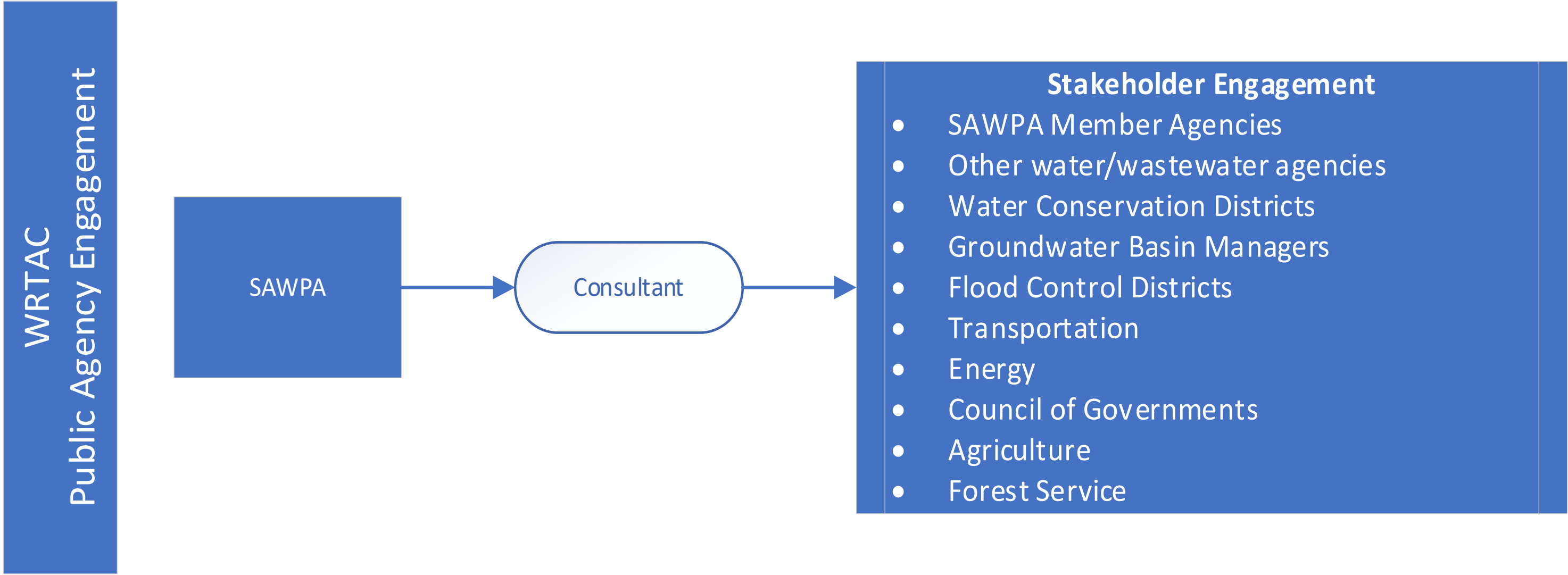


Provide a mechanism for future funding:

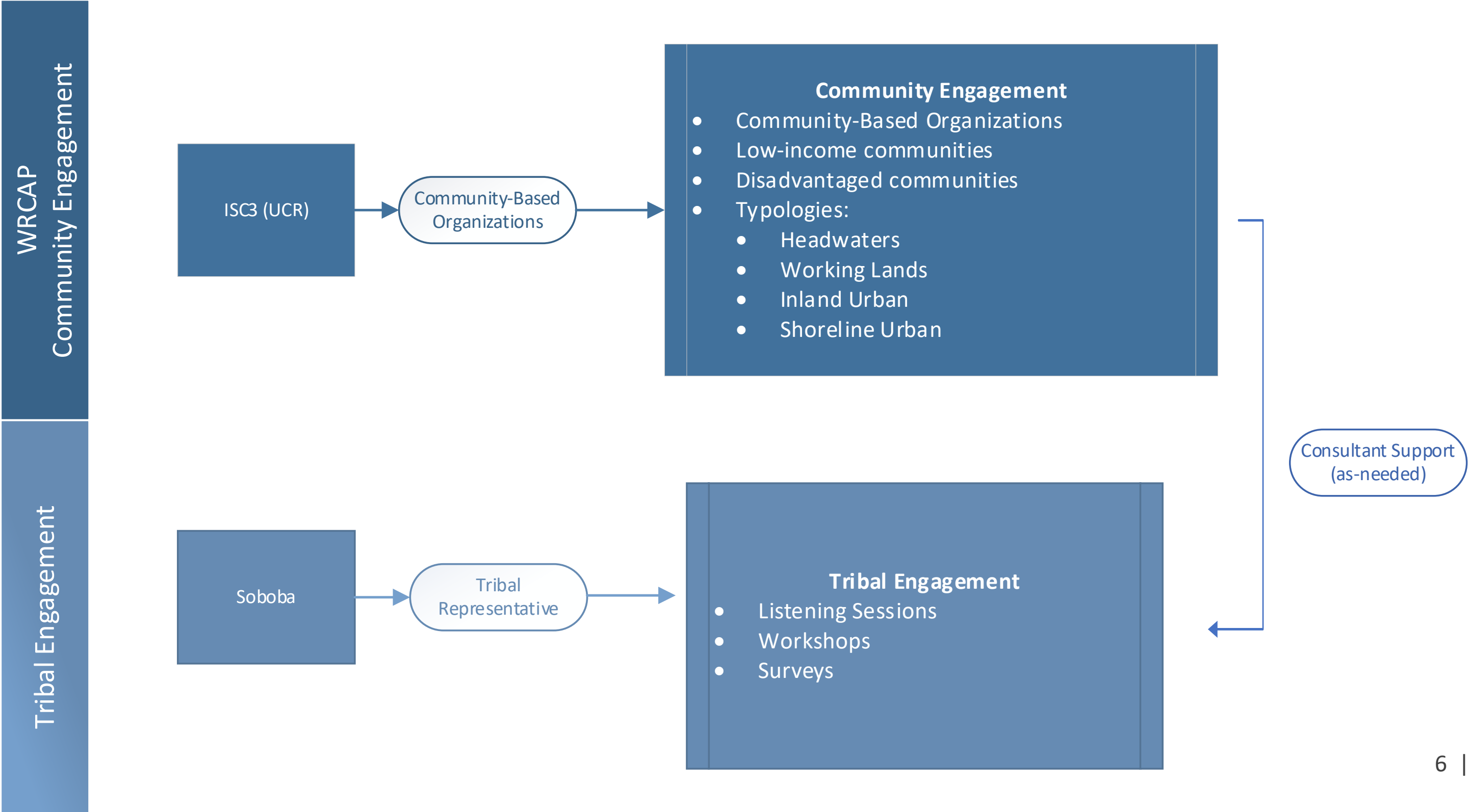
Implement member agency projects

Implement regional projects

Roles

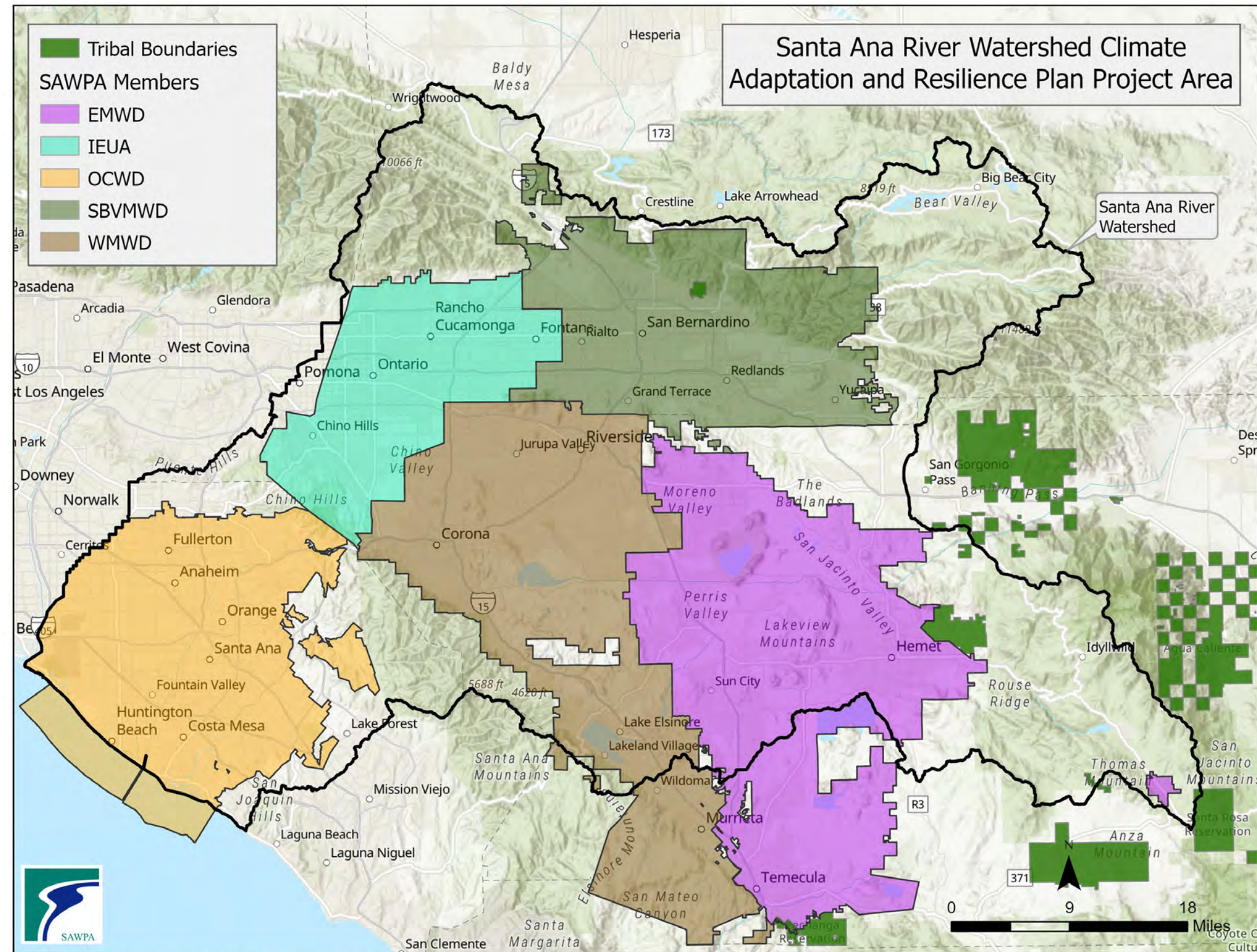


Roles



Soboba

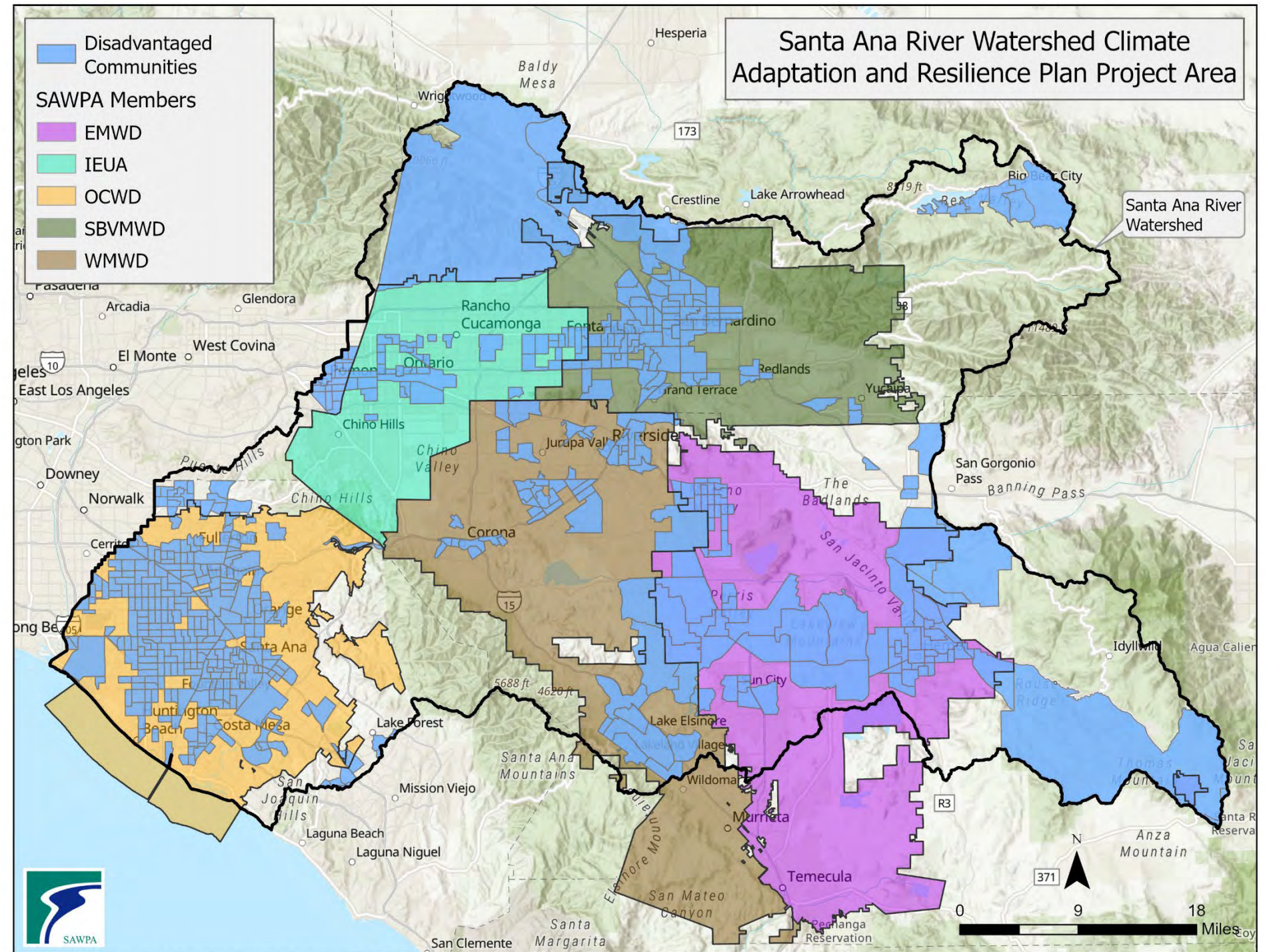
- Tribal Engagement Plan:
 - Tribal Elders
 - Talking Circles
 - Tribal Conferences
- Tribal perspectives on climate vulnerabilities and underlying risk factors that influence sensitivity to climate hazards
- Enhance Soboba's Vulnerability Assessment and Climate Adaptation Analysis (nature-based solutions)
- Project builds capacity for tribal engagement



P:\Projects\RachelGray\DACTribeMA\DACTribeMA.aprx LoTribe SW-3332

Inland Southern California Climate Collaborative (ISC3)/UCR

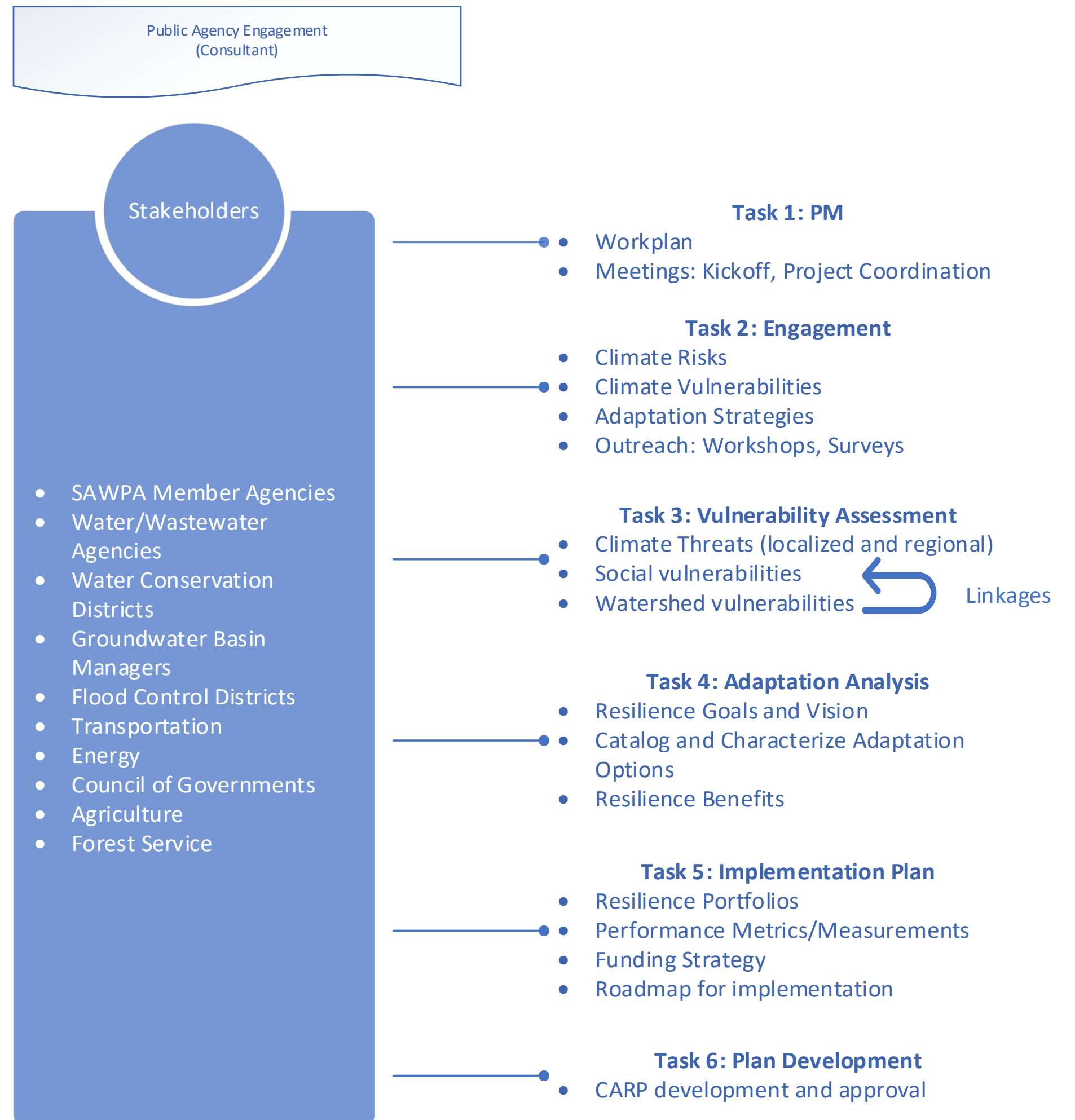
- Community Engagement Plan:
 - CBOs
 - Surveys
- Community Outreach:
 - California Rural Water Association
 - Orange County Coast Keepers (including the Inland Empire Water Keepers Program)
 - Santa Ana Watershed Association
 - Climate Action Campaign
 - Accelerate Neighborhood Climate Action
 - R-NOW



P:\Projects\RachelGray\DACTribeMA\DACTribeMA.aprx LoDAC SW-3333

Consultant RFP

- Public Agency Engagement
- Workplan
- Data Request
- Climate Risks
- Climate Vulnerabilities
- Adaptation Analysis
- Resilience Portfolios
- Funding Strategies
- Implementation Plan
- CARP



Near-Term Tasks

July 2024

- Executed Grant Agreement (OPR/SAWPA)

August 2024

- Execute Sub-Grantee Agreements
- Execute MOU

September 2024

- Release RFP for Professional Consultant Services

October/ November 2024

- Consultant Selection and Contracting

December 2024

- Work Plan
- Engagement Plan
- First Engagement Touchpoint: Climate Risks and Vulnerabilities

SARWCARP Grant Term Timeline

| Year | 2024 | | | | | | | | | | | | 2025 | | | | | | | | | | | | 2026 | | | | | | | | | | | |
|--|------|-----|-----|-----|-----|-----|-----|-----|-----|-----|-----|-----|------|-----|-----|-----|-----|-----|-----|-----|-----|-----|-----|-----|------|-----|-----|-----|-----|-----|-----|-----|-----|-----|-----|-----|
| Month | Jan | Feb | Mar | Apr | May | Jun | Jul | Aug | Sep | Oct | Nov | Dec | Jan | Feb | Mar | Apr | May | Jun | Jul | Aug | Sep | Oct | Nov | Dec | Jan | Feb | Mar | Apr | May | Jun | Jul | Aug | Sep | Oct | Nov | Dec |
| Grant Agreement Execution | | | | | | █ | █ | | | | | | | | | | | | | | | | | | | | | | | | | | | | | |
| Consultant RFP Posting | | | | | | | | █ | █ | | | | | | | | | | | | | | | | | | | | | | | | | | | |
| Consultant Proposal Review and Selection | | | | | | | | | | █ | █ | | | | | | | | | | | | | | | | | | | | | | | | | |
| Grant Period Anticipated | | | | | | | █ | █ | █ | █ | █ | █ | █ | █ | █ | █ | █ | █ | █ | █ | █ | █ | █ | █ | █ | █ | █ | █ | █ | █ | █ | █ | █ | █ | █ | █ |
| SARWCARP Development Process | | | | | | | | | | | | | █ | █ | █ | █ | █ | █ | █ | █ | █ | █ | █ | █ | █ | █ | █ | █ | █ | █ | █ | █ | █ | █ | █ | █ |
| Apply for RRGP Implementation Grants | | | | | | | | | | | | | | | | | | | | | | | | | | | | | | | | | | | | |

Thank You

Rachel Gray
Santa Ana Watershed Project Authority
Office (951) 354-4250
rgray@sawpa.gov
sawpa.gov





SANTA ANA WATERSHED
PROJECT AUTHORITY

Regional Water Quality Monitoring Task Force Santa Ana Regional Monitoring Program and Data Viewer Dashboard

Commission Meeting
Agenda Item No. 6.B
Rick Whetsel
Senior Watershed Manager
September 3, 2024

Recommendation

- Receive and File

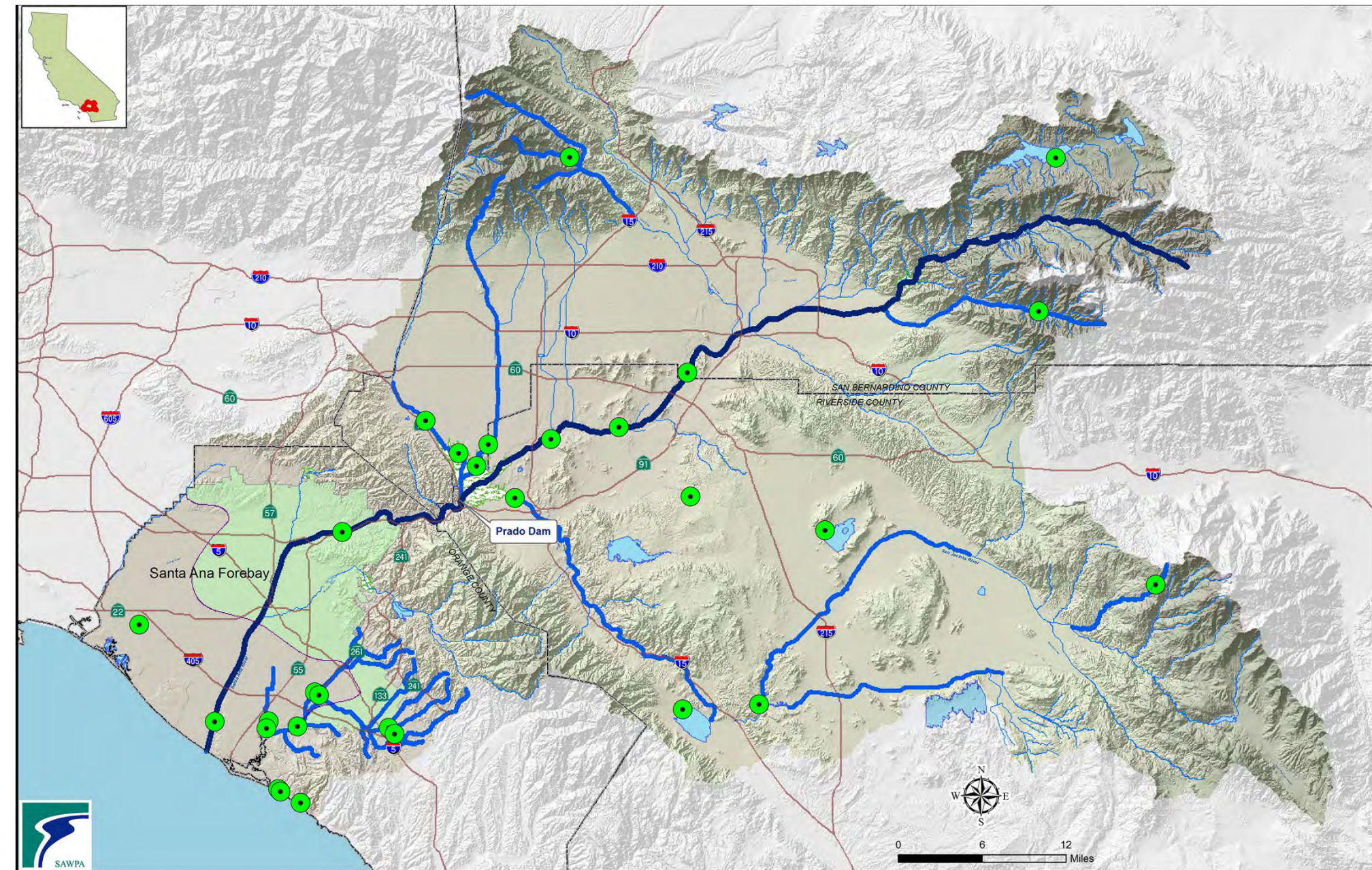
Agenda

- Purpose
- Watershed Stakeholders
- Task Force Benefits
- Task Force Activities
- Summary of Monitoring Program
- Monitoring Schedule
- Data Viewer Dashboard
- Next Steps



Task Force Purpose

- Implements several regulatory-related compliance monitoring requirements associated with the protection of recreational uses in the Santa Ana River Watershed
 - E. coli objectives for inland fresh surface waters (R8-2012-0001)
 - Middle Santa Ana River Bacteria TMDLs (R8-2005-0001)
- Annual report submitted to Regional Board on behalf of stakeholders:
 - Monitoring requirements
 - Compliance relative to water quality objectives



Watershed Stakeholders

- Regional Water Quality Monitoring Task Force
 - County of Orange
 - Riverside County Flood Control & Water Conservation District
 - San Bernardino County Flood Control District
- Middle Santa Ana River Bacteria TMDL Task Force (contribute towards monitoring program, not a voting member)
 - San Bernardino County Flood Control District representing the Cities of Cities of Chino, Chino Hills, Fontana, Montclair, Ontario, Rancho Cucamonga, Rialto, and Upland
 - County of Riverside
 - City of Claremont
 - City of Corona
 - City of Norco
 - City of Pomona
 - City of Riverside
 - Agricultural Operators represented by Chino Basin Watermaster Agricultural Pool



Task Force Benefits



Improve regional water quality



Continues partnership with Santa Ana Regional Board in providing regional facilitation and support services, including assistance to Regional Board with future triennial reviews and future amendments of the Basin Plan



Consolidates multiple monitoring efforts to achieve economies of scale



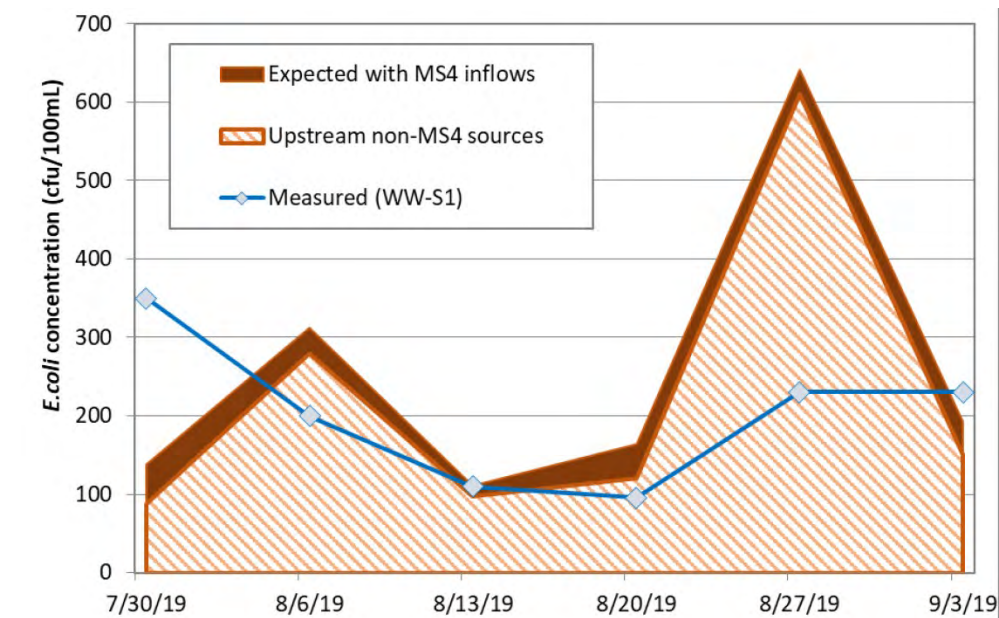
Support watershed stakeholders in addressing regulatory compliance with the Santa Ana River Watershed Basin Plan



Platform to implement future monitoring requirements

Task Force Activities

- Implements a coordinated regional surface water quality (bacteria) monitoring program:
 - Meet the requirements of the Basin Plan Implementation Plan bacterial indicator monitoring requirements
 - Support consolidation and standardization of regional programs such as the Middle Santa Ana River Bacteria TMDL
- Periodic review and update of monitoring plan and Quality Assurance Project Plan (QAPP)
- Annual reporting to Regional Board (June)
- Assist Regional Board with future triennial reviews and future amendments of the Basin Plan



Santa Ana River Regional Bacteria Monitoring Sites: Sampling Frequency

Priority 1 - REC1 Tier A Waters

- REC1: Water Contact Recreation (Primary Contact Recreation: body contact with water where ingestion of water is reasonably possible)
- 8 Sites
- 20 consecutive weeks during the warm, dry season
- 5 consecutive weeks during the cool, dry season

Priority 2 - MSAR Bacteria TMDLs

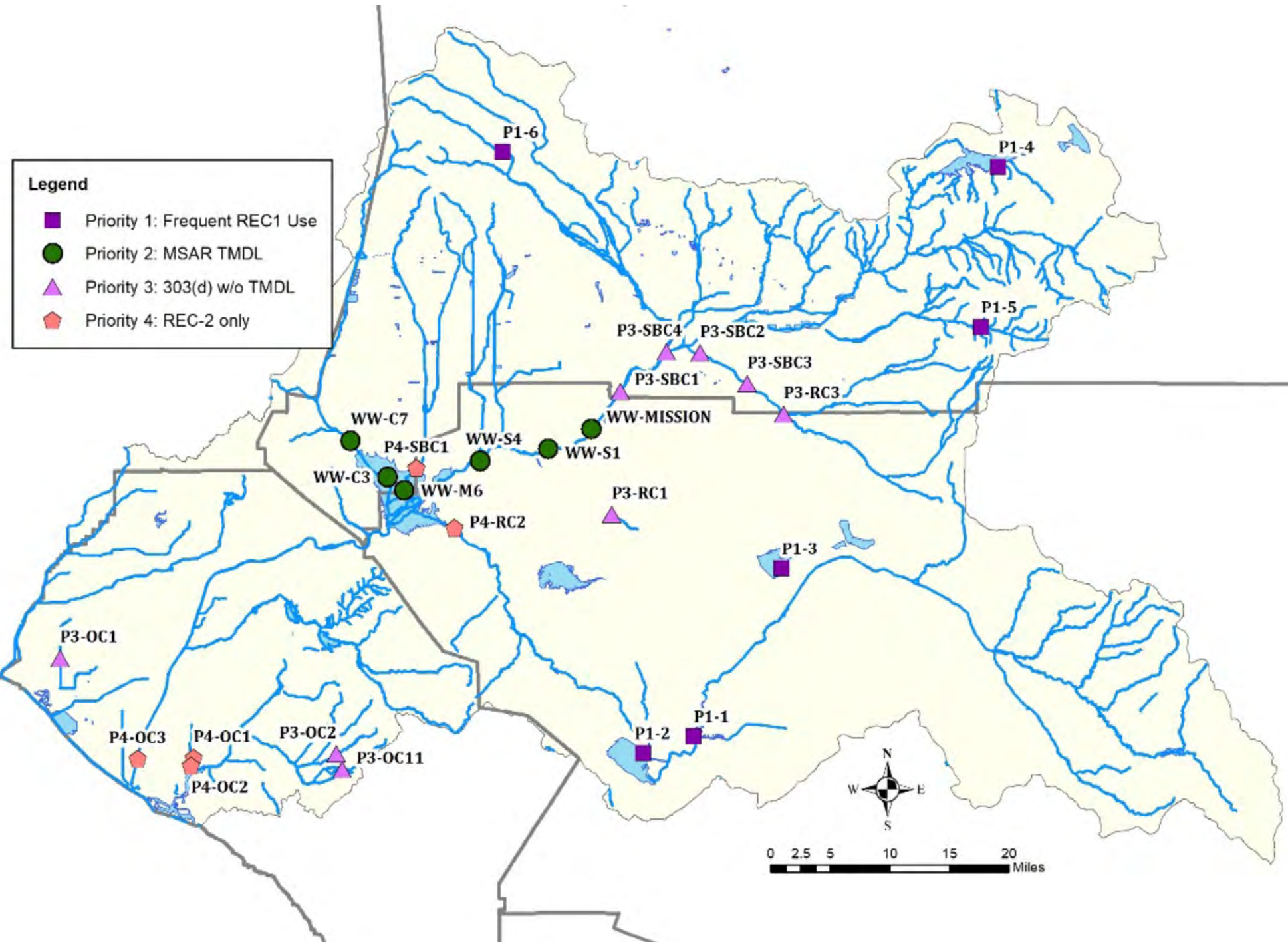
- 6 Sites
- 20 consecutive weeks during the warm, dry season
- 5 consecutive weeks during the cool, dry season
- Wet weather event: November 1 – March 31

Priority 3 - 303(d) Listed as impaired with no adopted TMDL (23 sites)

- 23 Sites
- 5 consecutive weeks during the cool, dry season

Priority 4 – REC2 waters

- REC2: Non-Contact Water Recreation (Secondary Contact Recreation: normally not involving body contact with water where ingestion of water would be reasonably possible)
- 4 Sites
- One event: June 23- August 30



Santa Ana River Regional Bacteria Monitoring Sites: Constituents

Field Measurements:

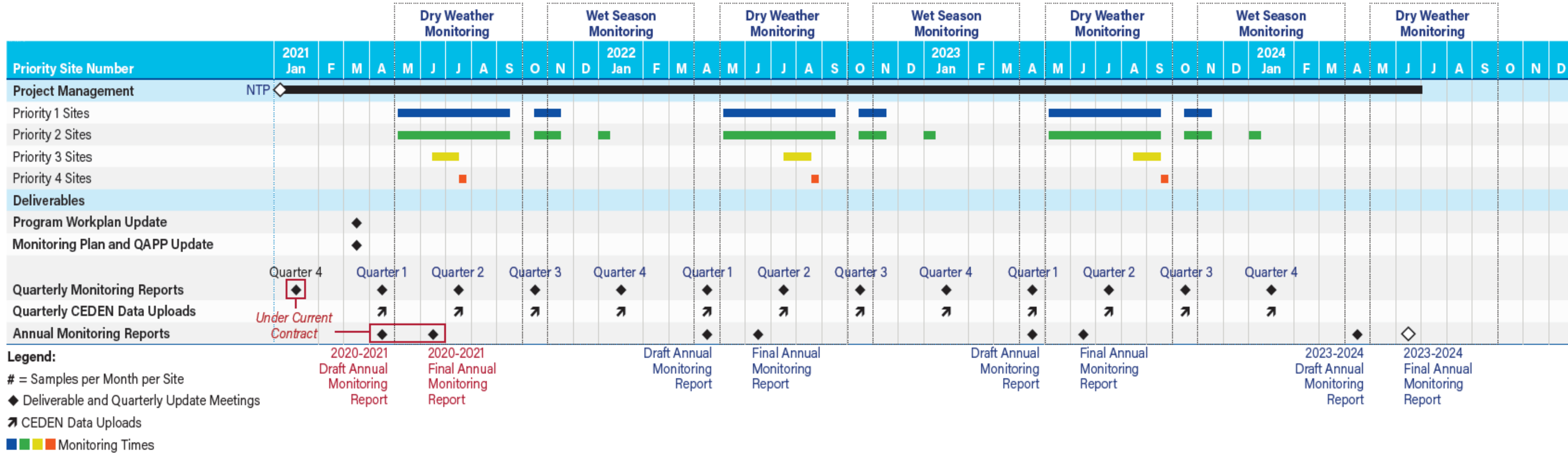
- Flow

Laboratory Analysis:

- Total Suspended Solids (TSS),
- Bacteria:
 - E. coli [freshwater] or
 - Enterococcus [brackish water]



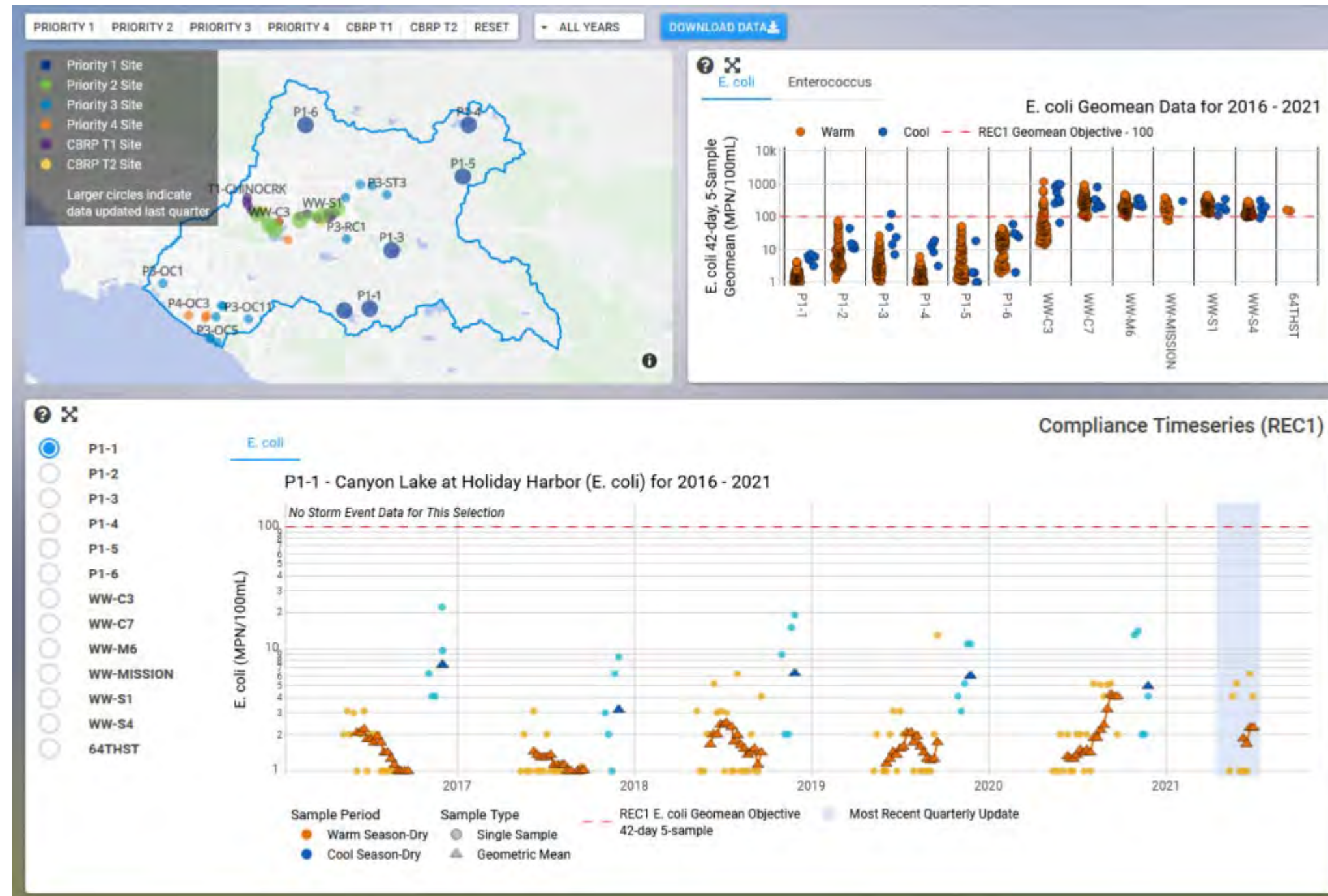
Project Schedule



Santa Ana Regional Monitoring Program Data Viewer Dashboard

- Replaces tabular quarterly reports with on-line data dashboard
 - Audience: Regional Board staff and stakeholders
- Includes complete record of regional bacteria data
- Provides more robust analyses of the data to demonstrate compliance for stakeholders including:
 - Interactive graphical user interface
 - Complex plots and maps to support analyses of data
 - Updated quarterly

[Go to Data Viewer
sarwqmdashboard.org](https://sarwqmdashboard.org)



Next Steps



2024-25 Monitoring (on-going)



Discussion with stakeholders to conduct Special Study to evaluate potential sources of bacteria (Q1 2025)



Draft 2024-25 Annual Santa Ana River Regional Bacteria Compliance Monitoring Report due April 2025



Final 2024-25 Annual Santa Ana River Regional Bacteria Compliance Monitoring Report due to Regional Board June 2025



Questions?

Thank You

Rick Whetsel
Santa Ana Watershed Project Authority
Office (951) 354-4220 | Direct (951) 354-4222
rwhetsel@sawpa.gov
sawpa.gov

