

SARCCUP Project Management Services – FYE 2025 Consultant Support

Ian Achimore, Senior Watershed Manager

SAWPA Commission | June 4, 2024



Overview and Recommendation

▶ Overview:

- ▶ GMs reviewed FYE 2025 SARCCUP Project Manager Costs for Woodard & Curran on May 14, 2024, meeting.

▶ Recommendation:

- ▶ Authorize the approval of Task Order RMC504-401-11 in the amount not-to-exceed **\$136,098 for FYE 2025** with Woodard & Curran for Project Management Services to support the Santa Ana River Conservation and Conjunctive Use Program (SARCCUP).

Major Activities in FYE 2024

1. Bi-monthly meetings with SAWPA and planning managers
2. Assisted SAWPA with responding to DWR's invoicing questions
3. Maintain schedule and track deliverable completion
4. Assisted SAWPA with development and quality control review of budget/schedule
5. Updated web-based database per DWR's new amendment requirements
6. Development of project completion report templates for each of the five SAWPA member agencies

FY 2023/2024 Budget: \$90,957

Major Activities for FYE 2025

- ▶ **Task 1:** Bi-monthly meetings with SAWPA and planning managers **(Ongoing)**
- ▶ **Task 13:** Assisting SAWPA member agencies and SAWPA with finalization of project completion reports **(New)**
- ▶ **Task 13:** Assisting SAWPA with the development of the grant completion report and preparation for final project close out **(New)**
- ▶ **Task 13:** Preparing member agencies for reporting on benefits realized from SARCCUP implementation (i.e., water conjunctively used, Santa Ana Sucker riparian acres, etc.) **(New)**
- ▶ **Task 10/11/12:** Report Submittals, Quarterly Progress Reports, Invoices **(Ongoing)**

FYE 2025 Budget: \$136,098

(43% increase over FYE 2024 due to efforts needed for additions reporting requirements and project close-out reporting)

FYE 2025 Task Order Budget

Task	FYE 2025 Proposed Task Order
Task 1: Program Status Reports	\$40,668
Task 2: Labor Compliance	\$0
Task 3: CEQA Compliance	\$0
Task 4: Prepare Project Monitoring Plan	\$0
Task 5: Coordinate Procurement of Appropriate Permits	\$0
Task 6: Schedule Information	\$1,660
Task 7: Construction Activities and Notification	\$0
Task 8: Acknowledgement of Credit/Signage Requirements	\$0
Task 9: Post Performance Monitoring	\$0
Task 10: Report Submittals	\$11,940
Task 11: Quarterly Progress Report	\$9,180
Task 12: Project Invoice Oversight	\$18,480
Task 13: Project Review and Evaluation; Final Reports and Audit	\$54,170
TOTAL:	\$136,098

All W&C Costs (Including Projections)

Fiscal Year Ending	Task Order Adopted Budgets	W&C Actuals (With Quoted Amounts in Purple)	Delta (Under/Over Budget)
FYE 2017	\$310,429	\$307,210	\$3,219
FYE 2018	\$260,515	\$140,885	\$119,630
FYE 2019	\$224,485	\$181,953	\$42,532
FYE 2020	\$229,046	\$154,973	\$74,073
FYE 2021	\$225,005	\$76,737	\$148,268
FYE 2022	\$132,872	\$63,231	\$69,641
FYE 2023	\$84,030	\$48,730	\$35,300
FYE 2024	\$60,906	* \$90,957	(\$30,051)
FYE 2025		\$136,098	NA
FYE 2026		\$93,358	NA
Totals	\$1,527,288	\$1,294,133	NA

No additional invoicing of SAWPA member agencies required.

*Includes change order of \$30,051 for FYE 2024 due to additional requirements in a 2023 DWR amendment (i.e., modified reporting requirements)

Long Term Funding Outlook

Item	Description	Amount
Total W&C Costs (Previous Slide Total)	FYE 2017 to FYE 2026	\$1,294,133
Total Revenue	From All Invoices to SAWPA Member Agencies	\$1,583,762
Amount in Reserves	Funding Remaining (Revenue minus Costs)	\$289,629

Net remains. No additional invoicing of member agencies required for FYE 2025 or FYE 2026.

Notes:

Assumes SARCCUP will complete construction by June 30, 2025 (i.e., FYE 2025) and the final project closeout is completed in FYE 2026.

Recommendation



Authorize the approval of Task Order RMC504-401-11 in the amount not-to-exceed **\$136,098 for FYE 2025** with Woodard & Curran for Project Management Services to support the Santa Ana River Conservation and Conjunctive Use Program (SARCCUP).



SANTA ANA WATERSHED
PROJECT AUTHORITY

Santa Ana River Watershed Climate Adaptation and Resilience Plan: Establishing Workgroups

Agenda Item No. 6.C

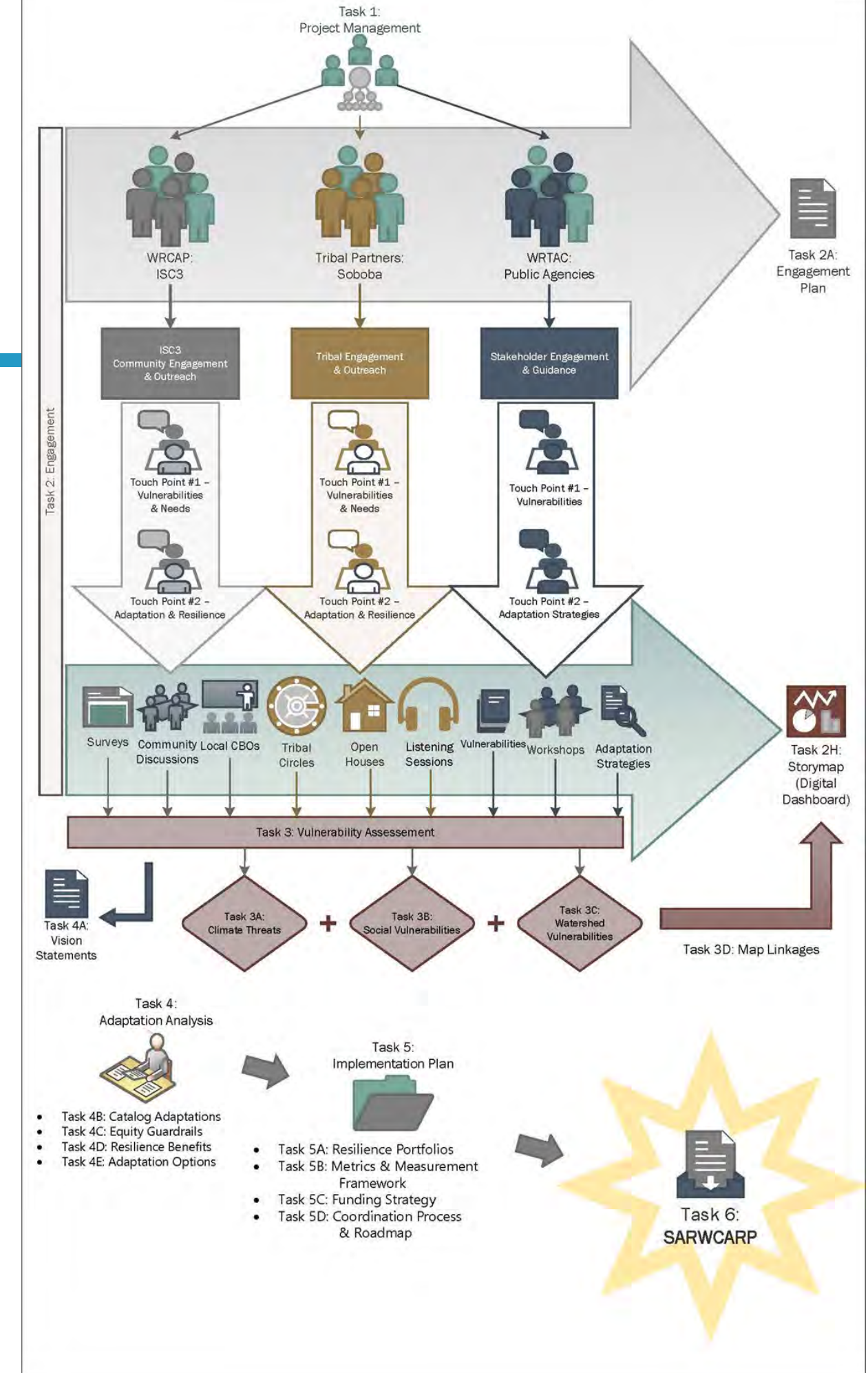
June 4, 2024

Rachel Gray

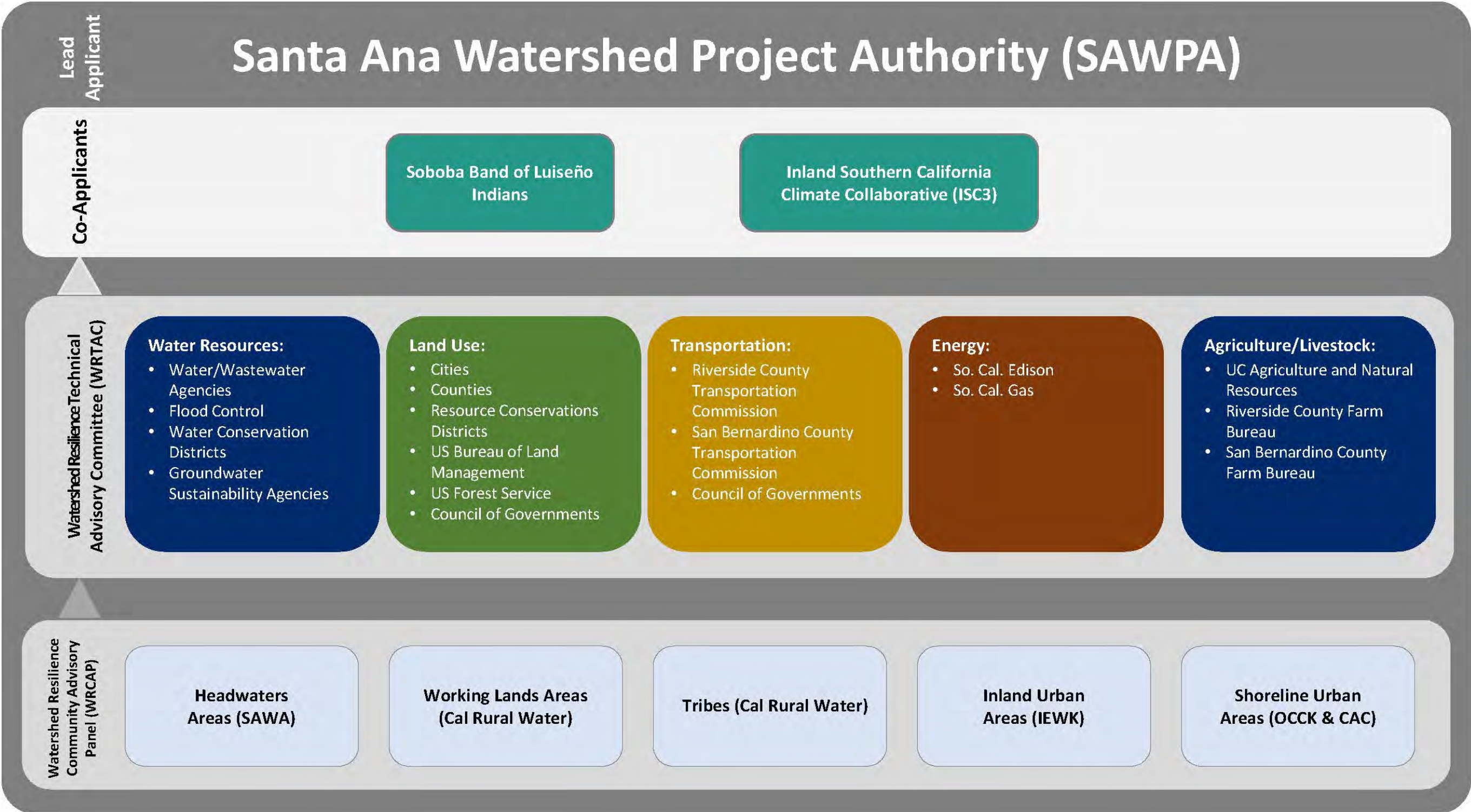
Water Resources and Planning Manager

Co-Applicants & Roles

- Soboba Band of Luiseño Indians (Soboba):
 - Tribal Perspective and Tribal Engagement
- Inland Southern California Climate Collaborative (ISC3):
 - Community Perspective
 - Stakeholder and Community Engagement
 - Facilitate Watershed Resilience Community Advisory Panel (WRCAP)



Stakeholder Engagement Roadmap



Community Stakeholder Engagement

Community and Stakeholder Engagement

➤ WRCAP:

- It will serve as a forum to inform the planning process with community perspectives across the Watershed.
- The WRCAP will be facilitated by ISC3 with support from Soboba.
- Engage on a quarterly basis.
- Track and guide engagement activities: climate vulnerabilities, adaptation strategies.
- Provide guidance for development of the adaptation portfolios (such as distribution across typologies).
- Ensure that CBOs are effectively integrated into the implementation plan.
- Dr. Valerie Olsen (UCI Department of Anthropology) will serve as an expert advisor to the WRCAP for the development of engagement and outcome strategies.

Watershed Resilience Community Advisory Panel (WRCAP)

WRCAP	Entity	Spatial Distribution
Tribal	Soboba	San Bernardino
Member Agency Communications	SBV, WW, EMWD, IEUA, OCWD	Regional
Community	ISC3	Riverside
Community	California Rural Water Association	Regional
Community	OC Coastkeeper/IE WaterKeeper	Inland Empire/Orange County
Community	Santa Ana Watershed Association	Regional
Regional	Steering Committee Member (City/County)	Regional
Community	Inland Action	San Bernardino
Community	Climate Action Campaign	Orange County
Community	Accelerate Neighborhood Climate Action	Redlands

Public Agency Stakeholder Engagement

Public Agency Stakeholder Engagement

➤ WRTAC:

- The WRTAC will be facilitated by SAWPA with support from ISC3 and serve as connective tissue across stakeholders in the water resources, local government, land management, energy, and agriculture contexts.
- Engage on a quarterly basis.
- Comprised of public agency stakeholders to provide guidance and technical input on the project touch points (climate vulnerabilities and adaptation strategies).
- Provide input on data from existing studies and an analysis of the climate risks (i.e., extreme heat, extreme weather, drought, and wildfire).
- Provide input on adaptation analysis by identifying existing or potential options, programmatic approaches, and prioritization criteria for portfolio of projects.
- Dr. Valerie Olsen will serve as an expert advisor to the WRTAC on visioning and goal setting.

Watershed Resilience Technical Advisory Committee (WRTAC)

WRTAC	Entity	Typologies Covered
Planning Manager MA	OCWD Planning Staff	Shoreline Urban
Planning Manager MA	SBVMWD Planning Staff	Headwaters
Planning Manager MA	EMWD Planning Staff	Agricultural
Planning Manager MA	IEUA Planning Staff	Inland Urban
Planning Manager MA	WMWD Planning Staff	Inland Urban
Tribal	Soboba	Tribal
Riverside County/Water	Riverside County Flood Control	Water/County
Orange County/Water	Orange County Watersheds	Water/County/Regional
San Bernardino County/Water	San Bernardino Flood Control	Water/County
Ag & Natural Resources	UCR	UCR (Sustainability)
Energy	Southern California Edison	Regional
Forest/State	United States Forest Service	Forest/Federal/Headwaters
Regional	WRCOG/CalTrans	Land Use/Regional
Transportation	CalTrans	Regional
Regional	MWDSC - Warren Teitz	Water/Regional
RWQCB (ex-officio)	Santa Ana - Jayne Joy	Water/Regulatory

Near-Term Tasks

March/April 2024

- Draft Grant Agreement (OPR/SAWPA)
- Draft Sub-Grantee Agreement:
 - SAWPA/Soboba
 - SAWPA/ISC3

May 2024

- Execute Grant Agreement
- Execute Sub-Grantee Agreements
- Execute MOU
- Release RFP
- Establish Working Groups:
 - WRTAC
 - WRCAP

June 2024

- Consultant Selection and Contracting

July 2024

- Work Plan
- Engagement Plan

August/September 2024

- First Engagement Touchpoint: Climate Risks and Vulnerabilities

SARWCARP Grant Term Timeline

Year	2024												2025											
Month	Jan	Feb	Mar	Apr	May	Jun	Jul	Aug	Sep	Oct	Nov	Dec	Jan	Feb	Mar	Apr	May	Jun	Jul	Aug	Sep	Oct	Nov	Dec
Grant Agreement Execution				█	█																			
Consultant RFP Posting					█	█																		
Consultant Proposal Review and Selection						█	█																	
Grant Period Anticipated				█	█	█	█	█	█	█	█	█	█	█	█	█	█	█	█	█	█	█	█	█
SARWCARP Development Process							█	█	█	█	█	█	█	█	█	█	█	█	█	█	█	█	█	█
Apply for RRGP Implementation Grants																								█

Thank You

Rachel Gray
Santa Ana Watershed Project Authority
Office (951) 354-4250
rgray@sawpa.gov
sawpa.gov



@sawpa_water



@sawpatube