



SANTA ANA WATERSHED  
PROJECT AUTHORITY

# Inland Empire Brine Line Rate Resolution 2024-5

Special PA 24 Committee Meeting

Agenda Item 6.A

David Ruhl

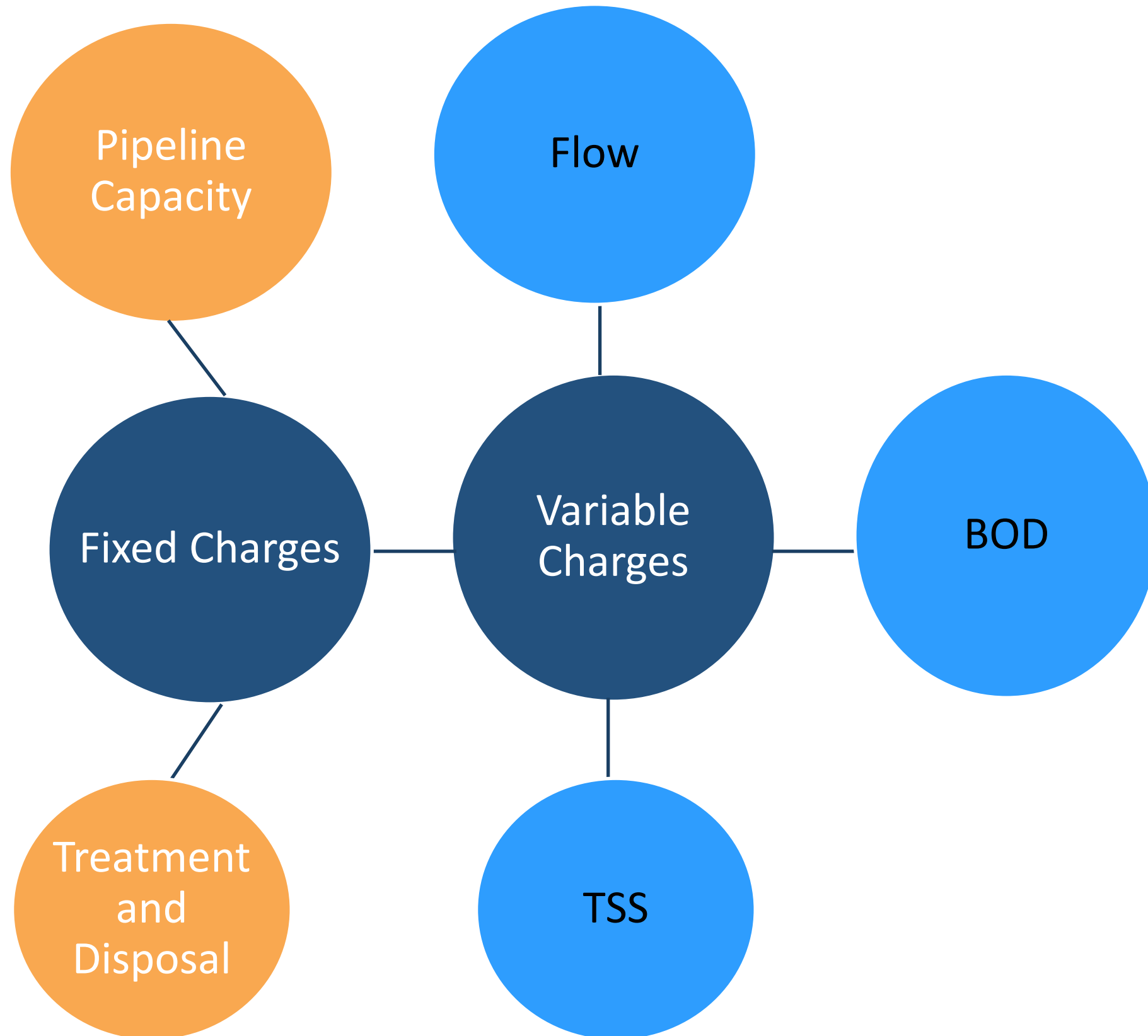
Executive Manager of Engineering and Operations

May 14, 2024

# Recommendation

---

- That the Project Agreement 24 Committee recommend approval by the SAWPA Commission of Resolution No. 2024-5 establishing the Fiscal Year 2024-25 Inland Empire Brine Line Rates.



## Brine Line Rate Components:

- Flow
  - Per Million Gallons
- Biochemical Oxygen Demand (BOD)
  - Per 1,000 lbs
- Total Suspended Solids (TSS)
  - Per 1,000 lbs
- Fixed Charges for Pipeline and Treatment and Disposal Capacity Owned
  - Per Million Gallons/Day

# Brine Line Rates Direct Dischargers (FY 2024-25)

Options	Effective Date	Flow MG	BOD(1) 1,000 lbs	TSS(1) 1,000 lbs	Fixed Pipe	Fixed T&D
Current FY 2023-24	-	1,073	394	494	6,654	13,505
Proposed FY 2024-25	7/1/2024	1,097	396	497	6,654	13,505

(1) BOD and TSS is a “pass through” cost from OC San. BOD and TSS proposed rate for FY 2024-25 match OC San charge received in April 2024.

# Brine Line Rates FY 2019 – FY 2026

Fiscal Year	Flow (MG)	BOD (1,000 lbs)	TSS (1,000 lbs)	Monthly Fixed Pipeline	Monthly Fixed Treatment
2026 Planned	1,152	\$416	\$522	\$6,654	\$13,505
<b>2025 Proposed</b>	<b>1,097</b>	<b>396</b>	<b>497</b>	<b>6,654</b>	<b>13,505</b>
<b>2024 Current</b>	1,073	394	494	6,654	13,505
<b>2023</b>	1,049	353	520	6,654	13,505
<b>2022</b>	1,018	329	460	6,654	13,505
<b>2021 Jan - June</b>	1,018	329	460	6,654	13,505
<b>2021 Jul - Dec</b>	979	316	442	6,398	12,985
<b>2020</b>	979	316	442	6,398	12,985
<b>2019</b>	946	307	429	6,217	12,607

# Brine Line Rates % Change (+/-) FY 2019 – FY 2026

Fiscal Year	Flow MG	BOD (1,000 lbs)	TSS (1,000 lbs)	Monthly Fixed Pipeline	Monthly Fixed Treatment
2026 Planned	5%	5%	5%	0%	0%
<b>2025 Proposed</b>	<b>2.3%</b>	<b>0.5%</b>	<b>0.5%</b>	<b>0%</b>	<b>0%</b>
2024 Current	2%	12%	-5%	0%	0%
2023	3%	7%	13%	0%	0%
2022	0%	0%	0%	0%	0%
2021 Jan – Jun	4%	4%	4%	4%	4%
2021 Jul – Dec	0%	0%	0%	0%	0%
2020	4%	3%	3%	3%	3%
2019	5%	0%	0%	5%	5%

# Indirect Dischargers

---

- Currently using a 2-tier System:
  - Brine (<100 mg/L of both BOD or TSS)
  - Non-Brine ( $\geq$ 100 mg/L of either BOD or TSS)
  - Charges based on a per gallon base for brine tier and a per gallon base plus pounds of BOD and pounds of TSS for non-brine tier.

# Indirect Discharger Rates

Option	Brine <sup>(a)</sup> Tier ( $< 100$ mg/L) / gallon	Non-Brine <sup>(b)</sup> Tier* ( $\geq 100$ mg/L) / gallon	BOD/lb	TSS/lb
Current (FY2023-24)	\$0.0160	\$0.0160	\$0.7800	\$0.7450
Proposed (FY2024-25)	\$0.0164	\$0.0164	\$0.7995	\$0.7636

*\*Non-brine tier charges the flow component plus any pounds of BOD and TSS.*

*(a) Brine Tier if both BOD and TSS concentrations are less than 100 mg/L*

*(b) Non-Brine Tier if any of the BOD or TSS concentrations are 100 mg/L or greater.*



# Capacity Lease Rates

Lease Option Proposed (FY 2024 – 25)	Flow (per gallon)	Additional BOD (per lb)	Additional TSS (per lb)
Pipeline and Treatment and Disposal	\$0.00263	\$0.4080	\$0.2501
Treatment and Disposal Only	\$0.00117	\$0.4080	\$0.2501

*(a) Discharges not exceeding 250 mg/l of BOD and 250 mg/l of TSS*

# Treatment & Disposal Surcharge Rates

Option	Flow (per gallon)	BOD (per lb)	TSS (per lb)
Current (FY 2023-24) and Proposed (FY 2024-25)	\$0.0021	\$0.4080	\$0.2501

These rates apply to dischargers that exceed their contractually owned capacity in any given month.

# Proposed Permit Fees

Type of Permit	Current Fee (FY 2023-24) And Proposed Fee (FY 2024-25)
Direct Discharger	\$600
Indirect Discharger	\$300
Connection Authorization	\$1,100
Liquid Waste Hauler	\$250

# Recommendation

---

- That the Project Agreement 24 Committee recommend approval by the SAWPA Commission of Resolution No. 2024-5 establishing the Fiscal Year 2024-25 Inland Empire Brine Line Rates.

**Questions?**

# Thank You

---

David P. Ruhl  
Executive Manager of Engineering and Operations  
Santa Ana Watershed Project Authority  
Office (951) 354-4223 | Cell (951) 538-3250  
druhl@sawpa.gov  
sawpa.gov





# Inland Empire Brine Line Agua Mansa Lateral

David Ruhl, Executive Manager of Engineering and Operations  
Special Project Agreement 24 Committee  
May 14, 2024 | Item No. 6.B

# Agua Mansa Lateral

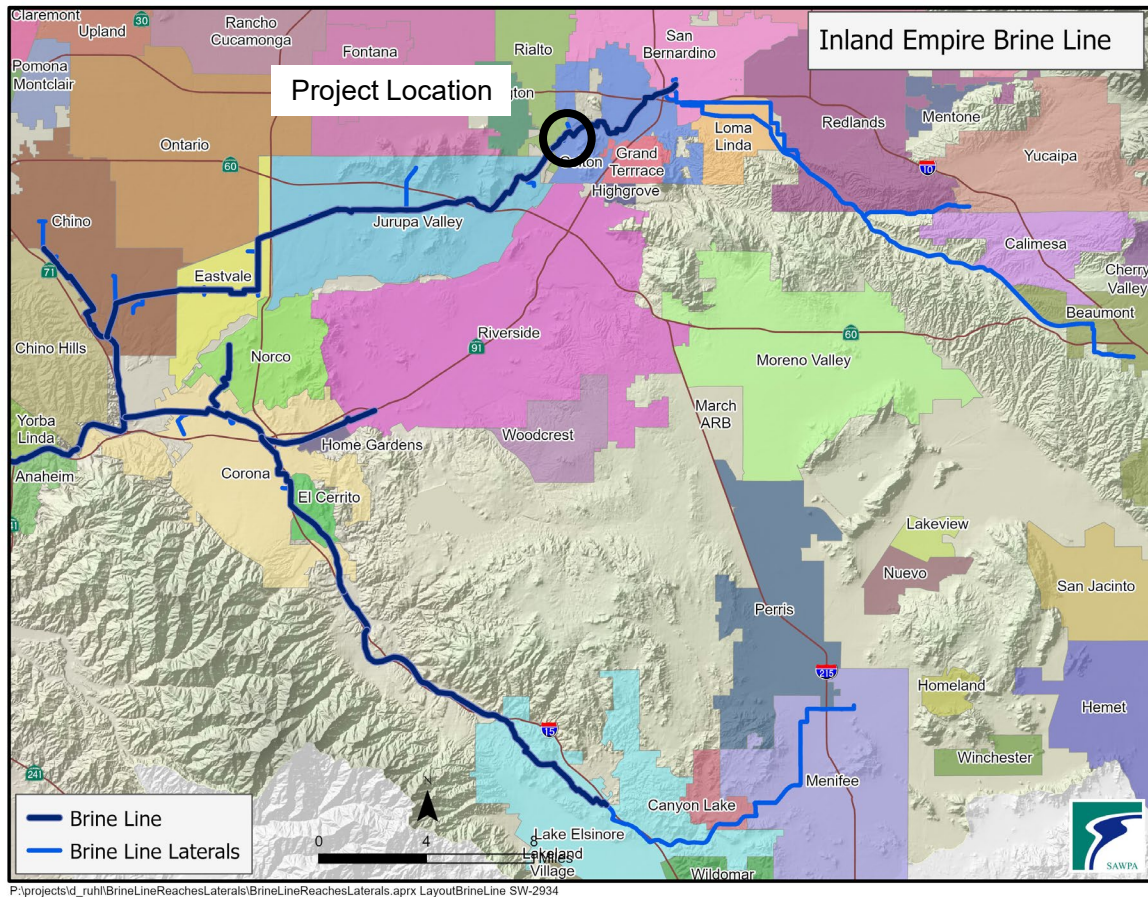
## Recommendation:

That the PA 24 Committee authorize the General Manager to accept the Genesis Construction work on the Agua Mansa Lateral as complete and direct staff to file a Notice of Completion with the San Bernardino County Clerk up the following:

1. Contractor has delivered all documents required by the Contract Documents; and
2. Notice from Engineer accepting the work; and
3. Receipt of Final Application for Payment from the Contractor; and
4. Notice from the Construction Manager recommending final payment.



# Agua Mansa Lateral



- PA 24 Award: August 2023
- Contractor: Genesis Construction
- Contract amount: \$2,226,171
- Complete: April 30, 2024
- Project Description: 4,550 feet of 12-inch PVC pipe, 7 new MAS, 2 connections

# Agua Mansa Lateral



Figure 1: Looking East along Agua Mansa Road



Figure 3: Backfill and compacting around new MAS

# Agua Mansa Lateral



Figure 1: Removal of abandoned 12" steel pipe.



Figure 2: Coating applied to New Brine Line Connection MAS.



Figure 3: Cross connection to existing RBF Lateral.

# Agua Mansa Lateral – Contract Authorization



<u>Contractor</u>	<u>Contract Amount</u>
• Genesis	\$2,207,290.00
▪ Change Order 1 – 3	<u>\$58,880.94</u>
• Final Contract Amount	\$2,226,170.94

# Cost Share Agreement

- Cost Share

	<u>Construction</u>	<u>Design</u>
▪ RBF	82.0%	N/A
▪ SAWPA	4.5%	25%
▪ Valley	13.5%	75%

Lateral Size	SAWPA Costs*	Valley Costs*	RBF Costs	Total Costs
12"	\$262,433	\$787,300	\$1,649,647	\$2,699,381

\*Also includes design, bidding and biological monitoring and additional construction costs for upsizing from an 8" lateral to a 12" lateral.

\*\* RBF share is based on bid amount for 8-inch lateral and contractor change orders.



# Agua Mansa Lateral

## Recommendation:

That the PA 24 Committee authorize the General Manager to accept the Genesis Construction work on the Agua Mansa Lateral as complete and direct staff to file a Notice of Completion with the San Bernardino County Clerk up the following:

1. Contractor has delivered all documents required by the Contract Documents; and
2. Notice from Engineer accepting the work; and
3. Receipt of Final Application for Payment from the Contractor; and
4. Notice from the Construction Manager recommending final payment.

**Questions?**