

Who is SAWPA?

SAWPA is a Watershed Agency Focused on Regional Water Issues

Formed originally in 1968 as a planning agency, the Santa Ana Watershed Project Authority (SAWPA) was created to help resolve interagency conflicts and address regional water issues in the Santa Ana River watershed. SAWPA tackles issues related to water supply reliability, water quality improvement, recycled water, wastewater treatment, groundwater management, and brine disposal.

SAWPA’s Role

SAWPA Administers Multi-Agency Task Forces

SAWPA serves as an administrator for several Task Forces within the watershed through meeting facilitation, contract service administration, and Task Force Agreement coordination. Through collaborative processes, SAWPA creates value by building relationships among regulators, SAWPA members, and regulated parties that allow for economies of scale, reduced costs, or increased benefits in addressing water related issues; provides regional capacity and neutral venue for supporting multi-agency forum(s) to address the water resources challenges in the Santa Ana River Watershed; and assists in the establishment and on-going facilitation of stakeholder processes to address watershed-specific issues.

SAWPA Supports its Member Agencies and Other Organizations with Water Planning

SAWPA is a Joint Powers Authority of five member agencies that supports water resources planning: Eastern Municipal Water District, Inland Empire Utilities Agency, Orange County Water District, San Bernardino Valley Municipal Water District, and Western Municipal Water District. SAWPA seeks to create and facilitate partnerships with and between organizations pursuing shared interests and overall watershed sustainability. Our regional leadership provides a model of collaboration and cooperation utilizing integrated solutions. SAWPA’s Mission is to:

- Facilitate communication
- Identify emerging opportunities
- Develop regional plans
- Secure funding
- Implement programs
- Build projects
- Operate and maintain facilities

The **Basin Monitoring Program Task Force** is one of our success stories – additional information about SAWPA programs can be found at www.sawpa.gov.

SAWPA Regional Planning Efforts

- Middle Santa Ana River TMDL Task Force
- Emerging Constituents Program Task Force
- Imported Water Recharge Workgroup
- Regional Water Quality Monitoring Task Force
- One Water One Watershed Program
- Santa Ana Sucker Conservation Team
- Lake Elsinore and Canyon Lake TMDL Task Force
- Forest First
- WECAN
- Arundo Habitat Management
- Lake Elsinore & San Jacinto Watersheds Authority



BASIN MONITORING PROGRAM TASK FORCE

The Basin Monitoring Program Task Force studies the effects of salinity and nitrogen on the long-term sustainability of groundwater supply.



SAWPA Member Agencies



What is the Task Force?

Basin Monitoring Program Task Force

The Task Force is a 20-agency collaborative effort organized by SAWPA. It was formed in 2004 to address water quality issues in the Santa Ana River Watershed. The Task Force monitors total dissolved solids and nitrate-nitrogen concentrations triennially in groundwater basins and annually in the Santa Ana River. Every 5-10 years, the Task Force conducts a wasteload allocation report for these same parameters for the Santa Ana River that provides guidance to the Regional Board in establishing discharge permits for water recycling plants along the river.

What are the goals of the Task Force?

Monitor Salinity and Nitrogen

- Monitors water quality (TDS and Nitrogen) in surface water and groundwater to determine if standards are being met
- Assesses if assimilative capacity, the ability of the groundwater basin to absorb additional pollutants without violating water quality standards, exists in groundwater basin
- Advises on the development of regional regulations and permitting approaches in response to drought impacts

The map below depicts TDS and Nitrogen objectives for groundwater quality. Santa Ana River Reaches 2, 4, and 5 are assessed annually for surface water quality. Watershed-wide groundwater and ambient water quality updates are conducted triennially.

Learn More and Contact Information

For the latest information on the Basin Monitoring Program Task Force, please visit:



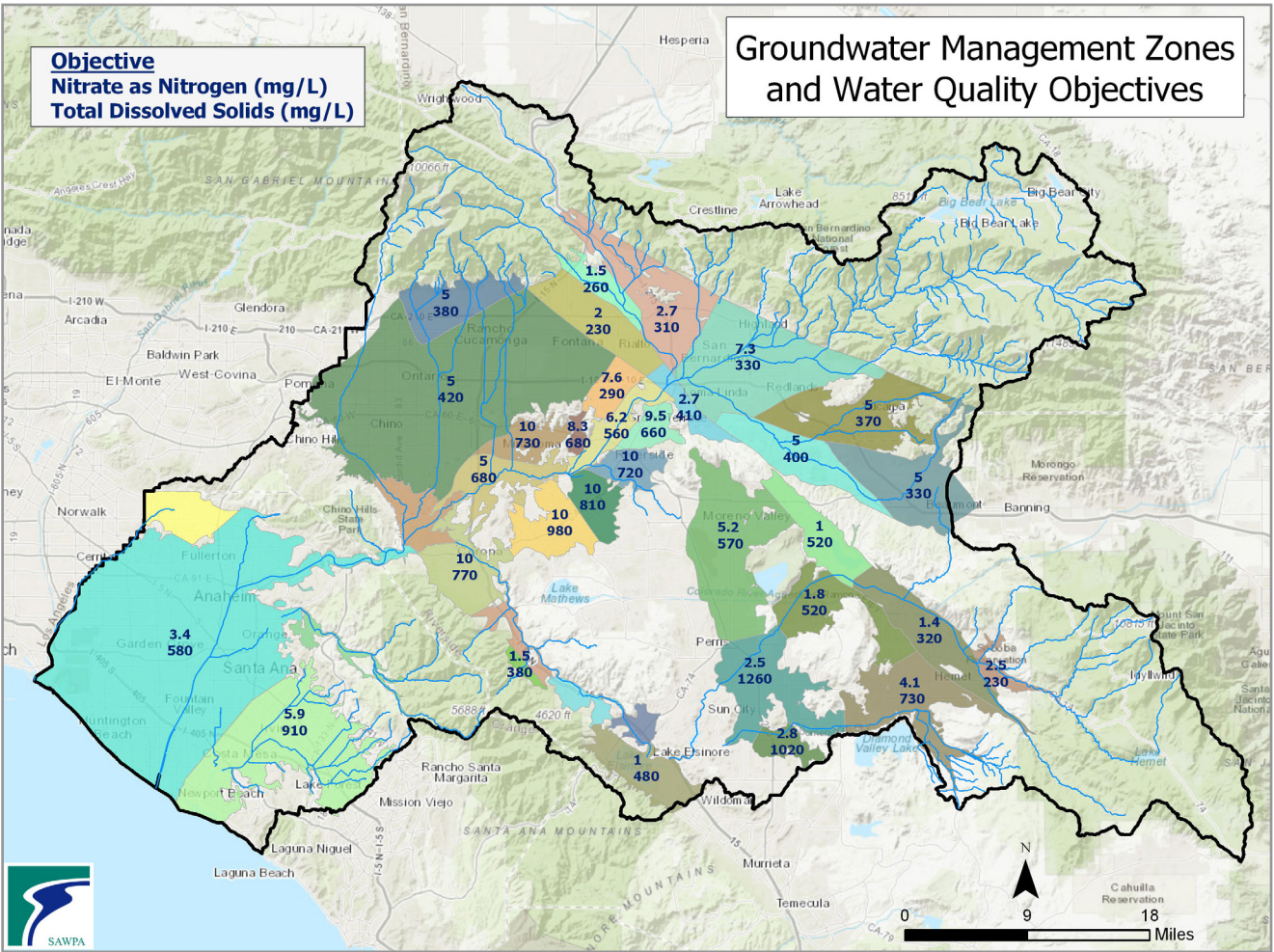
www.sawpa.gov/task-forces/basin-monitoring-task-force/



www.CAWaterLibrary.net



Contact Ian Achimore at iachimore@sawpa.gov



12
ANNUAL
REPORTS OF
SANTA ANA
RIVER
WATER
QUALITY

5
AMBIENT
GROUND-
WATER
QUALITY
UPDATES

2
WASTELOAD
ALLOCATION
MODEL
(WLAM)
UPDATES

4
BASIN PLAN
AMENDMENTS

0
LITIGATION

Who is the Task Force?

Collaboration in Place of New Regulation

20 Stakeholders Working Together

The Task Force, administered by SAWPA, brings together a large collection of key watershed stakeholders – **key wastewater agencies** and the **Santa Ana Regional Water Quality Control Board** – for the shared purpose of improving water quality across the Santa Ana River Watershed.

Stakeholders

- Beaumont-Cherry Valley Water District (WD)
- City of Banning
- City of Beaumont
- City of Corona
- City of Redlands
- City of Rialto
- City of Riverside
- Chino Basin Watermaster
- Colton/San Bernardino Regional Tertiary Treatment and Wastewater Reclamation
- Eastern Municipal WD
- Elsinore Valley Municipal WD
- Inland Empire Utilities Agency
- Irvine Ranch WD
- Temescal Valley WD
- Orange County WD
- San Bernardino Valley Municipal WD
- San Geronio Pass Water Agency
- Santa Ana Regional Water Quality Control Board
- West Riverside County Regional Wastewater Authority
- Yucaipa Valley WD
- Jurupa Community Services District

Key Tasks: Implements Watershed Water Quality Monitoring Program

These tasks provide Task Force members and regulators with the most current information on water quality in the ground-water underlying the region. This information will help guide future planning efforts in the watershed.

- Develop annual Santa Ana River **Water Quality Reports** that assess the effectiveness of wasteload allocations
- Produce triennial Ambient **Water Quality Updates** that determine assimilative capacity of a groundwater basin
- Develop and update the **Wasteload Allocation Model (WLAM)** to provide guidance on wastewater treatment plant discharge permits
- Conduct additional cooperative water quality studies, as necessary, to evaluate salt and nitrate trends



Successes to Date

Key Outcomes: Reduce Conflicts and Work Together

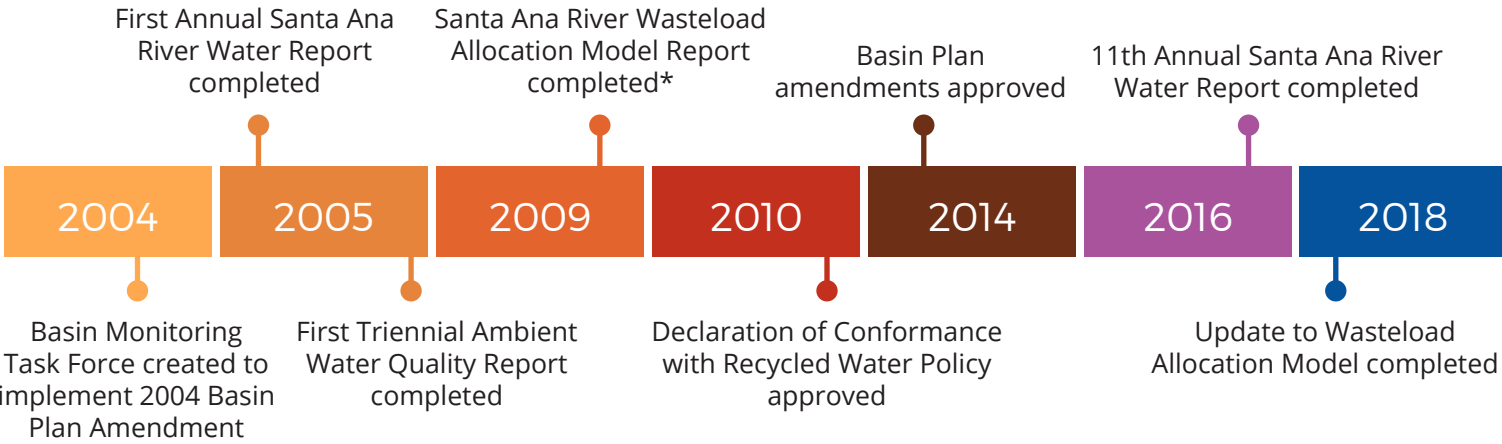
RELATIONSHIP BUILDING WITH 20 STAKEHOLDERS

Over the last 15 years, the Task Force has been able to **reduce conflict and improve efficiencies** in water and wastewater operations through joint salinity control studies and implementation.

COST SAVINGS THROUGH COLLABORATION

Regional support in reducing regulatory compliance for 20 agencies and **avoiding up to \$100 million** in additional wastewater treatment plant desalting costs.

Milestones Since Inception



Santa Ana River Water Quality Reports have been completed annually since 2005 and Ambient Water Quality Updates were completed in 2005, 2008, 2011, 2014, and 2017.

Over a 20 year period, the concentration of Total Nitrogen in Santa Ana River discharge has steadily declined in Reach 2 of the Santa Ana River (below Prado Dam). This is critical to protecting water quality in the Orange County Groundwater Basin.

