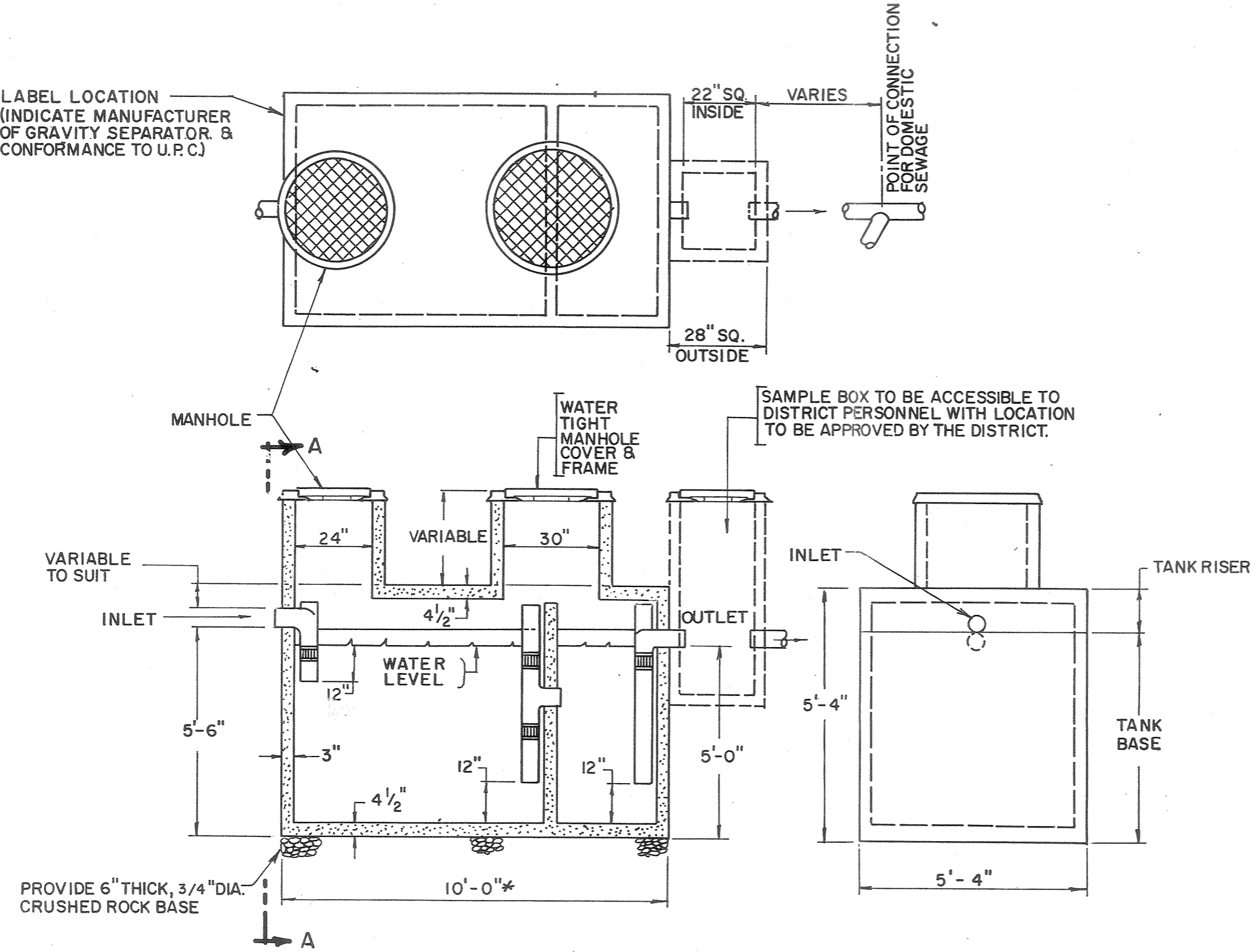


LABEL LOCATION
(INDICATE MANUFACTURER
OF GRAVITY SEPARATOR &
CONFORMANCE TO U.P.C.)



PROVIDE 6" THICK, 3/4" DIA.
CRUSHED ROCK BASE

* DIMENSION TYPICAL OF
1500 GALLON CAPACITY
GRAVITY SEPARATOR

SECTION A-A

NOTES:

1. DOMESTIC SEWAGE CONNECTION IS TO BE MADE DOWNSTREAM OF GRAVITY SEPARATOR SAMPLE BOX
2. PRECAST CONCRETE VAULT INCLUDING TOP AND COVERS TO BE DESIGNED FOR A MINIMUM H-20 TRAFFIC LOADING.
3. ALL PIPE AND FITTINGS TO BE CAST IRON.
4. THE REQUIRED CAPACITY FOR THE GRAVITY SEPARATOR SHALL BE BASED UPON APPENDIX H OF THE UNIFORM PLUMBING CODE.
5. DELETED
6. WASTE DISCHARGE APPLICANT IS RESPONSIBLE FOR THE PURCHASE, INSTALLATION, OPERATION AND MAINTENANCE OF THE GRAVITY SEPARATOR.
7. APPROVED SUPPLIERS FOR GRAVITY SEPARATOR
 - a. PYRAMID PRECAST CO., INC. RIALTO, CA.
 - b. M.C. NOTTINGHAM CO., PASADENA, CA.
 - c. UTILITY VAULT CO., FONTANA, CA.
8. LOCATION OF GRAVITY SEPARATOR IS SUBJECT TO APPROVAL BY DISTRICT
9. PROVIDE LABEL INDICATING MANUFACTURER OF GRAVITY SEPARATOR AND CONFORMANCE TO U.P.C.

DELETE NOTE NO. 5 10/95

JURUPA COMMUNITY SERVICES DISTRICT		
SCALE: NONE	GRAVITY SEPARATOR 750 GAL TO 1500 GAL.	DRAWING NO.
DATE: AUG., 1990		S-19
APPROVED <i>Albert A. Webb</i> RCE 26979	ALBERT A. WEBB ASSOCIATES CONSULTING ENGINEERS RIVERSIDE CALIFORNIA	W.Q. 89-316