



...A United Voice for the Santa Ana River Watershed

## OWOW Steering Committee Members

**Brenda Dennstedt**, Convener | SAWPA Commissioner  
**T. Milford Harrison**, SAWPA Commissioner  
**Katrina Foley**, Orange County Supervisor  
**Karen Spiegel**, Riverside County Supervisor  
**Curt Hagman**, San Bernardino County Supervisor  
**James Hessler**, Altman Plants

**Garry W. Brown**, Orange County Coastkeeper  
**William Ruh**, Regional Water Quality Control Board  
**Deborah Robertson**, Mayor, City of Rialto  
**Ted Hoffman**, Councilmember, City of Norco  
**Nicholas Dunlap**, Mayor Pro Tem, City of Fullerton

**PURSUANT TO THE PROVISIONS OF AB 361, THIS MEETING WILL BE CONDUCTED VIRTUALLY WITH THE OPPORTUNITY FOR PUBLIC COMMENT. ALL VOTES TAKEN WILL BE CONDUCTED BY ORAL ROLL CALL.**

**This meeting will be accessible as follows:**

<b>Meeting Access Via Computer (Zoom)*:</b>	<b>Meeting Access Via Telephone*:</b>
<ul style="list-style-type: none"><li>• <a href="https://sawpa.zoom.us/j/82901502676">https://sawpa.zoom.us/j/82901502676</a></li></ul>	<ul style="list-style-type: none"><li>• 1 (669) 900-6833</li></ul>
<ul style="list-style-type: none"><li>• Meeting ID: 829 0150 2676</li></ul>	<ul style="list-style-type: none"><li>• Meeting ID: 829 0150 2676</li></ul>
* Participation in the meeting via the Zoom app (a free download) is strongly encouraged; there is no way to protect your privacy if you elect to call in by phone to the meeting.	

**REGULAR MEETING OF THE  
OWOW STEERING COMMITTEE  
THURSDAY, JANUARY 26, 2023 – 11:00 a.m.**

### **AGENDA**

- 1. CALL TO ORDER | PLEDGE OF ALLEGIANCE (Brenda Dennstedt, Convener)**
- 2. PUBLIC COMMENTS**  
Members of the public may address the Committee on items within the jurisdiction of the Committee; however, no action may be taken on an item not appearing on the agenda unless the action is otherwise authorized by Government Code §54954.2(b).
- 3. APPROVAL OF MEETING MINUTES: NOVEMBER 17, 2022 .....5**



...A United Voice for the Santa Ana River Watershed

#### 4. **BUSINESS ITEMS**

- A. **RECOGNIZE WILLIAM RUH AS THE REPRESENTATIVE FROM THE SANTA ANA REGIONAL WATER QUALITY CONTROL BOARD TO THE OWOW STEERING COMMITTEE (SC#2023.1)**.....9  
**Presenter:** Rachel Gray  
**Recommendation:** To recognize the Santa Ana Regional Water Quality Control Board's Board Member William 'Bill' Ruh as a new member of the OWOW Steering Committee.
- B. **INCORPORATION OF THE 2022 RIVERSIDE COUNTY STORMWATER RESOURCE PLAN INTO THE OWOW PLAN (SC#2023.2)** .....11  
**Presenter:** Ian Achimore  
**Recommendation:**  
1) Receive a presentation from representatives of Riverside County Flood Control and Water Conservation District about the 2022 Riverside County Stormwater Resource Plan that covers the Santa Ana River Watershed portion of the County, and  
2) Incorporate the 2022 Plan by reference in an appendix to the OWOW Plan Update 2018.
- C. **PROPOSITION 1 ROUND 2 INTEGRATED REGIONAL WATER MANAGEMENT APPLICATION UPDATE (SC#2023.3)** .....51  
**Presenter:** Ian Achimore  
**Recommendation:** Receive and file.

#### 5. **COMMITTEE MEMBERS' COMMENTS**

#### 6. **REQUEST FOR FUTURE AGENDA ITEMS**

#### 7. **ADJOURNMENT**

##### **PLEASE NOTE:**

Americans with Disabilities Act: Meeting rooms are wheelchair accessible. If you require any special disability related accommodations to participate in this meeting, please contact (951) 354-4220 or [svilla@sawpa.org](mailto:svilla@sawpa.org). Notification at least 48 hours prior to the meeting will enable staff to make reasonable arrangements to ensure accessibility for this meeting. Requests should specify the nature of the disability and the type of accommodation requested.

Materials related to an item on this agenda submitted to the Committee after distribution of the agenda packet are available for public inspection during normal business hours at the SAWPA office, 11615 Sterling Avenue, Riverside, and available at [www.sawpa.org](http://www.sawpa.org), subject to staff's ability to post documents prior to the meeting.

##### **Declaration of Posting**

I, Sara Villa, Clerk of the Board of the Santa Ana Watershed Project Authority declare that on January 19, 2023, a copy of this agenda has been uploaded to the SAWPA website at [www.sawpa.org](http://www.sawpa.org) and posted at the SAWPA office, 11615 Sterling Avenue, Riverside, California.



...A United Voice for the Santa Ana River Watershed

### 2023 OWOW Steering Committee Regular Meetings

Fourth Thursday of Every Other Month (January, March, May, July, September, November)

(Note: All meetings begin at 11:00 a.m., unless otherwise noticed, and are held at SAWPA.)

<b>January</b>		<b>March</b>	
1/26/23	Regular Committee Meeting	3/23/23	Regular Committee Meeting
<b>May</b>		<b>July</b>	
5/25/23	Regular Committee Meeting	7/27/23	Regular Committee Meeting
<b>September</b>		<b>November</b>	
9/28/23	Regular Committee Meeting	11/16/23*	Regular Committee Meeting*

\* Meeting date adjusted due to conflicting holiday.

Page Intentionally Blank



...A United Voice for the Santa Ana River Watershed

## OWOW STEERING COMMITTEE

### REGULAR MEETING MINUTES

November 17, 2022

<b>Committee Members</b>	
<b><u>Santa Ana Watershed Project Authority Representatives</u></b>	
Bruce Whitaker, Convener, Orange County Water District	Present
Brenda Dennstedt, Western Municipal Water District	Present (11:08 a.m.)
<b><u>County Supervisor Representatives</u></b>	
Katrina Foley, Orange County Board of Supervisors	Absent
Karen Spiegel, Riverside County Board of Supervisors	Present (11:28 a.m.)
Curt Hagman, San Bernardino County Board of Supervisors	Present
<b><u>County Municipal Representatives</u></b>	
Deborah Robertson, Mayor, City of Rialto	Present (11:10 a.m.)
Ted Hoffman, Councilmember, City of Norco	Present
Nicholas Dunlap, Mayor Pro Tem, City of Fullerton	Absent
<b><u>Business Community Representative</u></b>	
James Hessler, Director of West Coast Operations, Altman Plants	Present
<b><u>Environmental Community Representative</u></b>	
Garry W. Brown, President, Orange County Coastkeeper	Absent
<b><u>Regional Water Quality Control Board Representative</u></b>	
Joseph Kerr, Regional Water Quality Control Board	Absent
<b>Others Present</b>	
<b><u>SAWPA COMMISSIONERS:</u></b>	T. Milford Harrison, Kelly Rowe
<b><u>SAWPA STAFF:</u></b>	Jeff Mosher, Mark Norton, Ian Achimore, Rick Whetsel, Edina Goode, Pete Vitt, Sara Villa, Zyanya Ramirez
<b><u>OTHERS PRESENT:</u></b>	Andrew D. Turner, Lagerlof LLP

The OWOW Steering Committee meeting was called to order at 11:05 a.m. by Bruce Whitaker, Convener, at the Santa Ana Watershed Project Authority, 11615 Sterling Avenue, Riverside, CA 92503. An oral roll call was conducted; however, a quorum was not present at the beginning of this meeting. A decision was made to skip Agenda Items 1-3 and consider Agenda Item 4.A. to allow time for a quorum to be present.



1. **CALL TO ORDER | PLEDGE OF ALLEGIANCE**

Pursuant to the provisions of AB 361, this meeting was conducted virtually. Due to technical issues experienced by Convener Whitaker, Committee Member Dennstedt convened the meeting from this point on. A roll call was conducted again demonstrating a quorum.

2. **PUBLIC COMMENTS**

There were no public comments; there were no public comments received via email.

3. **APPROVAL OF MEETING MINUTES – SEPTEMBER 22, 2022**

**MOVED**, approve the September 22, 2022 meeting minutes.

Result:	<b>Adopted by Roll Call Vote</b>
Motion/Second:	Hagman/Hoffman
Ayes:	Dennstedt, Hagman, Hessler, Hoffman, Robertson, Spiegel, Whitaker
Nays:	None
Abstentions:	None
Absent:	Brown, Dunlap, Foley, Kerr

The Committee then considered Agenda Item 4.B.

4. **BUSINESS ITEMS**

A. **SOLVE THE WATER CRISIS PRESENTATION BY WESTERN MUNICIPAL WATER DISTRICT (SC#2022.8)**

Craig Miller, General Manager of the Western Municipal Water District, provided a presentation titled Solve the Water Crisis contained in the agenda packet on pages 11-25.

Mr. Miller is part of the Solve the Water Crisis campaign, which is an educational effort that brings into focus the ongoing water supply crisis to California policymakers. Action is needed to respond to the ongoing water supply crisis, which is already impacting residents' quality of life, economic growth, community health, and the environment. Mr. Miller encouraged membership and engagement by visiting <https://www.solvethewatercrisis.com/>.

Committee member Hoffman thanked Mr. Miller for his presentation and agreed that policymakers need a full understanding of the problem to produce effective solutions/policies. Members of the Solve the Water Crisis will attend the 2022 ACWA Fall Conference and will be advocating the campaign.

This item was for discussion purposes; no action was taken on Agenda Item No. 4.A.

A quorum was present at 11:10 a.m. during the presentation of Agenda Item No. 4.A. As a result, the Committee considered Agenda Items 1-3 after Agenda Item No. 4.A.

B. **PROPOSITION 1 ROUND 2 INTEGRATED REGIONAL WATER MANAGEMENT RESOLUTION AND PROJECT UPDATES (SC#2022.9)**

Ian Achimore provided a presentation titled Proposition 1 Round 2 Integrated Regional Water Management Implementation (Prop 1 Round 2 IRWM) Resolution and Project Updates, contained in the agenda packet on pages 29-44.





The Department of Water Resources (DWR) requires SAWPA to adopt a resolution that authorizes the General Manager or Designee to prepare the necessary data, conduct investigations, file such proposal, and execute a grant agreement with the DWR and associate sub-agreements, to accept and conduct the work of Prop 1 Round 2 IRWM and Grant.

**MOVED**, to recommend that the SAWPA Commission adopt SAWPA Resolution 2022.17 in order to submit the final grant application to the Department of Water Resources.

Result:	<b>Adopted by Roll Call Vote</b>
Motion/Second:	Dennstedt/Robertson
Ayes:	Dennstedt, Hagman, Hessler, Hoffman, Robertson, Spiegel, Whitaker
Nays:	None
Abstentions:	None
Absent:	Brown, Dunlap, Foley, Kerr

**C. SANTA ANA RIVER WATERSHED WEATHER MODIFICATION PILOT PROGRAM STATUS REPORT (SC#2022.10)**

Mark Norton provided a presentation titled Santa Ana Weather Modification Pilot – Status Report, contained in the agenda packet on pages 49-70.

Work continues on preparation of a future grant application under the DWR Proposition 1 IRWM Round 2 Implementation grant program to cover 50% of the cost of the four-year pilot program with validation. The pilot project was recommended for funding under SAWPA's Round 2 Call for Projects and supported by the OWOW Steering Committee and the SAWPA Commission for inclusion among the 13 projects to be submitted to DWR. Based on the timeframe established now for the SAWPA OWOW Round 2 Call for Projects, SAWPA staff will be submitting a grant application for the pilot program before the February 1, 2023 deadline.

On July 19, 2022, after release of an RFP and review of proposals, NAWC was selected to perform the weather modification pilot project over the four-year pilot time span and awarded a contract for this work by the SAWPA Commission. Work commenced on the seeding unit fabrication, equipment orders and the local seeding site agreements with approximately 10 private property owners and water agencies to operate the 15 seeding units. Unfortunately, insufficient time was available to execute the agreements before the original and planned start for the pilot project of November 15, 2022. Consequently, the pilot project was deferred from November 2022 to November 2023 to allow sufficient time for the local seeding site agreements to be executed and preparations to occur. An agreement and task order were also awarded in October 2022 with the Desert Research Institute to conduct the weather modification pilot validation to ensure that additional precipitation from the cloud seeding is verified.

Committee Member Robertson stated that their school district will be hosting a Climate Action Summit and requested that staff attend and provide a presentation on this project. Mr. Norton will contact Committee Member Robertson to coordinate this effort.

This item was for discussion purposes; no action was taken on Agenda Item No. 4.C.



5. **COMMITTEE MEMBERS' COMMENTS**

There were no comments.

6. **REQUEST FOR FUTURE AGENDA ITEMS**

Committee Member Robertson requested a future agenda item to discuss how we can collaborate with local flood control districts to improve stormwater capture.

7. **ADJOURNMENT**

The meeting ended at 12:06 p.m.

**APPROVED:** January 26, 2023

---

Bruce Whitaker, Convener

Attest:

---

Sara Villa, Clerk of the Board



## **OWOW STEERING COMMITTEE MEMORANDUM NO. 2023.1**

**DATE:** January 26, 2023

**TO:** OWOW Steering Committee

**SUBJECT:** Recognize William “Bill” Ruh as the Representative from the Santa Ana Regional Water Quality Control Board to the OWOW Steering Committee

**PREPARED BY:** Rachel Gray, Water Resources and Planning Manager

### **RECOMMENDATION**

It is recommended that the OWOW Steering Committee recognize the Santa Ana Regional Water Quality Control Board’s Board Member William “Bill” Ruh as a new member of the OWOW Steering Committee.

### **DESCRIPTION**

Santa Ana Regional Water Quality Control Board’s Board Member William “Bill” Ruh replaces outgoing Steering Committee former Board Member Joe Kerr. This position on the OWOW Steering Committee is selected by the Santa Ana Regional Water Quality Control Board.

Board Member Bill Ruh was appointed to the Santa Ana Regional Water Quality Control Board in 2002. He was selected to sit on the OWOW Steering Committee by Santa Ana Regional Water Quality Control Board starting on January 26, 2023.

Mr. Ruh also has served on the Citrus Valley Association of Realtors as director of governmental affairs since 2001 as a consultant for the State Assembly Select Committee on the Alameda Corridor East since 1999 and has served on the Montclair City Council since 1998. Previously, he served on the Board of Directors for the Monte Vista Water District from 1991 to 1998 and the Planning Commission for the City of Montclair from 1988 to 1998.

Bill received a bachelor’s degree in Political Science from the University of La Verne, and has pursued a professional career in Legislative/Government Affairs and Public Policy. He has worked for the California State Assembly and Senate, as well as the U. S. House of Representatives. At present, he coordinates Public Policy and Governmental Affairs for the Real Estate Industry. Bill is a lifetime resident of Montclair.

### **Attachments**

None

Page Intentionally Blank

## **OWOW STEERING COMMITTEE MEMORANDUM NO. 2023.2**

**DATE:** January 26, 2023

**TO:** OWOW Steering Committee

**SUBJECT:** Incorporation of the 2022 Riverside County Stormwater Resource Plan into the OWOW Plan

**PREPARED BY:** Ian Achimore, Senior Watershed Manager

### **RECOMMENDATION**

It is recommended that the OWOW Steering Committee:

- 1) Receive a presentation from representatives of Riverside County Flood Control and Water Conservation District about the 2022 Riverside County Stormwater Resource Plan that covers the Santa Ana River Watershed portion of the County, and
- 2) Incorporate the 2022 Plan by reference in an appendix to the OWOW Plan Update 2018.

### **DISCUSSION**

The One Water One Watershed (OWOW) Plan Update 2018 serves many roles in the Santa Ana River Watershed, chiefly as the State-approved Integrated Regional Water Management (IRWM) Plan for the Santa Ana Funding Area within the State-wide IRWM Program. The OWOW Steering Committee, along with the SAWPA Commission, serve as the Regional Water Management Group (RWMG), a State-approved entity that makes planning and grant funding decisions associated with the Statewide IRWM Program. The Statewide IRWM Program was created with the passage of Senate Bill 1672 in 2002, although SAWPA has developed integrated watershed plans since the 1990s.

Senate Bill 985 approved in 2014, requires the development of a local stormwater resource plan to receive grants for stormwater and dry weather runoff capture projects from recent State bond measures such as the Proposition 1 Water Bond. Upon development of a local stormwater resource plan, the area's corresponding RWMG shall incorporate it into their IRWM Plan. Riverside County Flood Control and Water Conservation District is planning on applying for future grant funding and integrating their plan will make them more competitive in bringing dollars to the Santa Ana River Watershed.

As Riverside County is within the Santa Ana Funding Area, this RWMG shall review and consider integrating the 2022 Stormwater Resource Plan into the OWOW Plan Update 2018. The OWOW Steering Committee previously approved the Orange County Stormwater Resource Management Plan for integration in 2021. The Chino Basin Stormwater Resource Plan and the San Bernardino County Stormwater Resource Plan were also integrated in 2019. They were integrated by adding a reference to their plans in the OWOW Plan Update 2018's appendix G – Subregional Plans.

To facilitate Riverside County entities being eligible for grant funds that are coming available, staff recommends incorporating the 2022 Riverside County Stormwater Resource Plan into the OWOW Plan Update 2018. SAWPA staff reviewed their plan and it meets the IRWM-related

requirements contained in the Stormwater Resource Plan Guidance released by the State Water Resources Control Board. It is important to note that the State Board proposes minimal requirements for “incorporation” of stormwater resources plans into IRWM plans. The process of formally incorporating it by reference into the appendix of the OWOW Plan Update 2018 demonstrates the intention to achieve a more meaningful integration of planning efforts, including stormwater resources plans, into a watershed-wide strategy.

**ATTACHMENTS:**

1. PowerPoint Presentation
2. 2022 Riverside County Stormwater Resource Plan – Cover, Table of Contents and Executive Summary.
3. OWOW Plan Update 2018 Appendix G – Subregional Plans



**RIVERSIDE COUNTY**  
WATERSHED PROTECTION

# Incorporation of Riverside County Stormwater Resource Plan

Ian Achimore  
Santa Ana Watershed Project Authority

Rohini S. Mustafa and Andrea Macias  
Riverside County Flood Control and Water Conservation District

OWOW Steering Committee | January 26, 2023  
Agenda Item 4.B

# Recommendation

It is recommended that the OWOW Steering Committee:

- 1) Receive a presentation from representatives of Riverside County Flood Control and Water Conservation District about the 2022 Riverside County Stormwater Resource Plan that covers the Santa Ana River Watershed portion of the County, and
- 2) Incorporate the 2022 Plan by reference in an appendix to the OWOW Plan Update 2018.

# Relationship Between IRWM\* and Stormwater Resource Plans

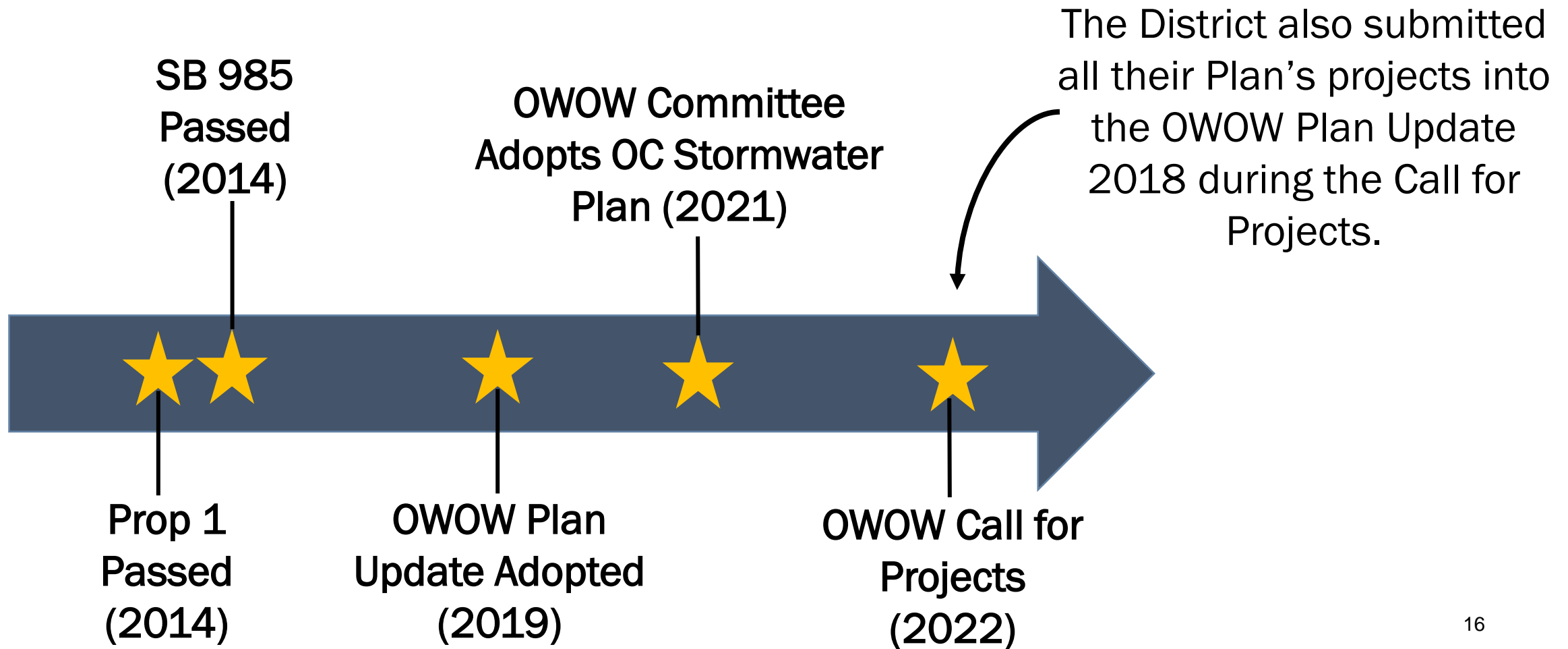
- The One Water One Watershed (OWOW) Plan Update 2018 serves many roles in the Watershed, chiefly as the approved IRWM Plan for the Santa Ana Funding Area.
- Senate Bill 985 requires a local stormwater resource plan to receive State grants for stormwater and dry weather runoff capture projects.
  - Plan must also be submitted to a IRWM regional water management group.
  - Adopting their plan reflects intent to achieve a more meaningful integration.
- Staff has reviewed their plan and it meets the IRWM-related requirements contained in State Stormwater Resource Plan Guidance.



\*Integrated  
Regional Water  
Management<sup>15</sup>



# Timeline of Various Plan Developments



# District Overview

- Partnership
  - County of Riverside
  - Riverside County Flood Control & Water Conservation District
  - Coachella Valley Water District
  - 27 Cities

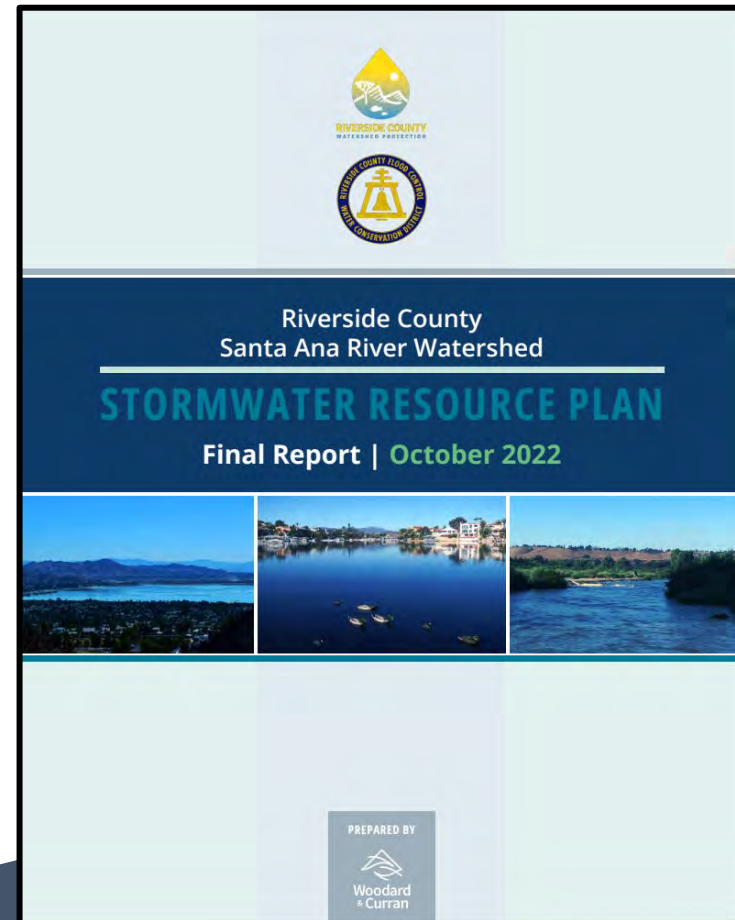
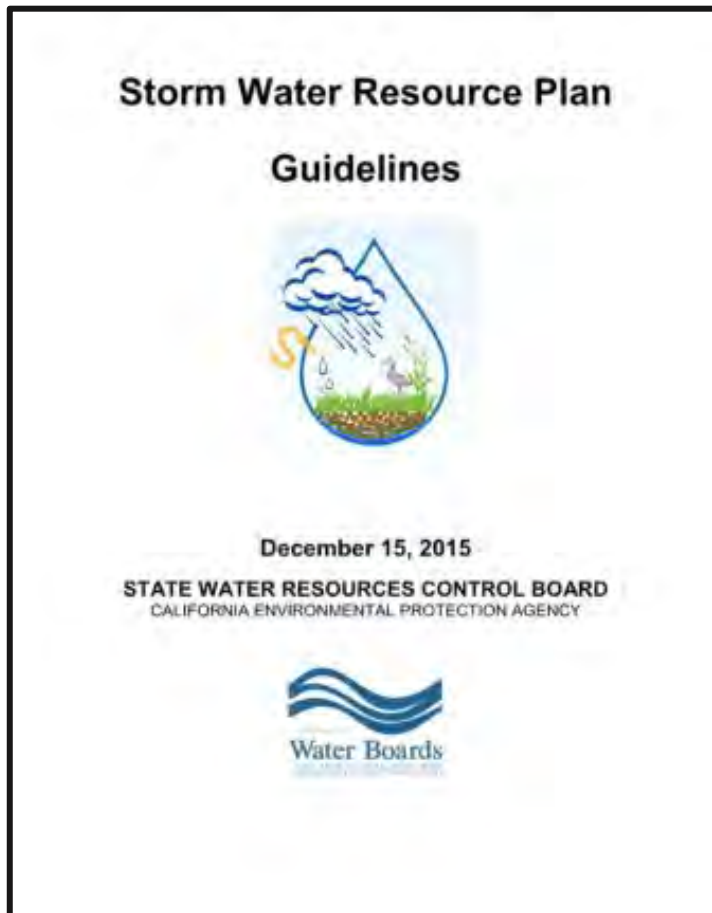


**RIVERSIDE COUNTY**  
WATERSHED PROTECTION

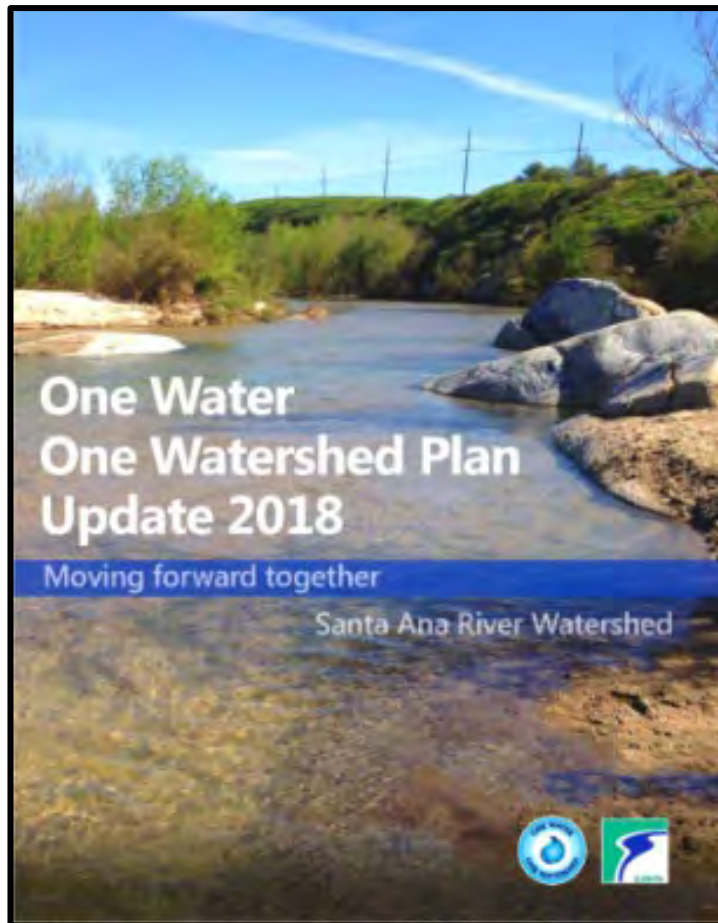
- Our Mission:  
*“To protect, preserve, and enhance the quality of Riverside County watersheds by fostering a community-wide commitment to clean water.”*

# Santa Ana Region Stormwater Resources Plan

- *What is a SWRP?*



# SWRP and OWOW Plan Linkages



## PILLARS

Water Resources Optimization  
Water Quality  
Disadvantaged Communities and  
Tribal Communities  
Climate Risk and Response  
Integrated Stormwater Management

Land Use and Water Planning  
Natural Resources Stewardship  
Water Recycling  
Water Use Efficiency  
Data Management and  
Monitoring

## OWOW Guiding Principles



### Create Anew

A shared vision of a healthy productive watershed



### Collaboration

#### Across Boundaries

Citizens of the watershed, finding multi-jurisdictional solutions

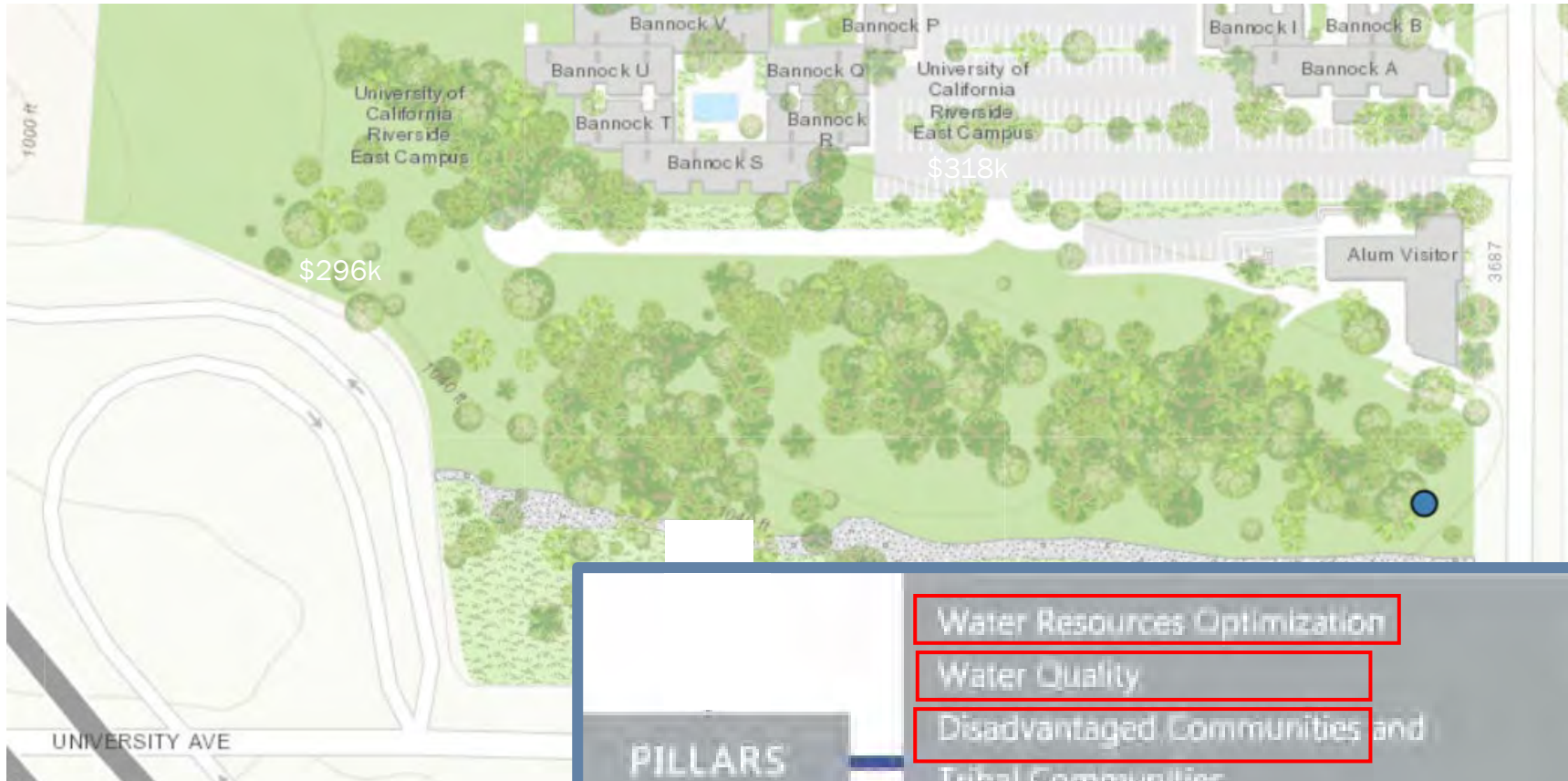


### Adopt Systems Approach

Problems are interrelated, seek synergies, create catalysts



# SWRP and OWOW Plan Linkages – UC Riverside Gage



## PILLARS

Water Resources Optimization

Water Quality

Disadvantaged Communities and

Tribal Communities

Climate Risk and Response

Integrated Stormwater Management

Land Use and Water Planning

Natural Resources Stewardship

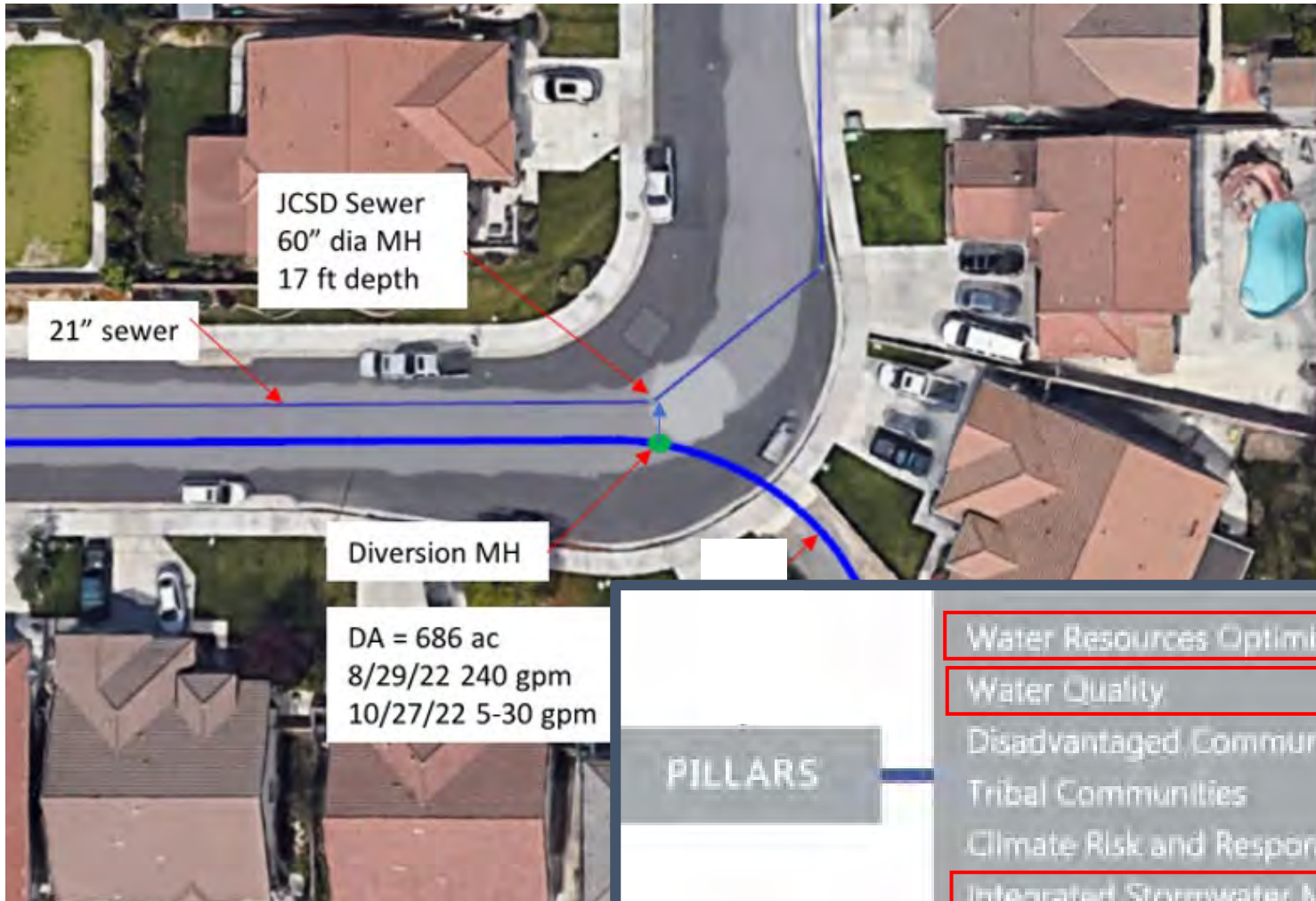
Water Recycling

Water Use Efficiency

Data Management and

Monitoring

# SWRP and OWOW Plan Linkages – Dry Weather Diversion



## PILLARS

Water Resources Optimization

Water Quality

Disadvantaged Communities and  
Tribal Communities

Climate Risk and Response

Integrated Stormwater Management

Land Use and Water Planning

Natural Resources Stewardship

Water Recycling

Water Use Efficiency

Data Management and  
Monitoring





# SWRP and OWOW Plan Linkages – Dry Weather Diversion



## PILLARS

Water Resources Optimization

Water Quality

Disadvantaged Communities and  
Tribal Communities

Climate Risk and Response

Integrated Stormwater Management

Land Use and Water Planning  
Natural Resources Stewardship  
Water Recycling  
Water Use Efficiency

Data Management and  
Monitoring

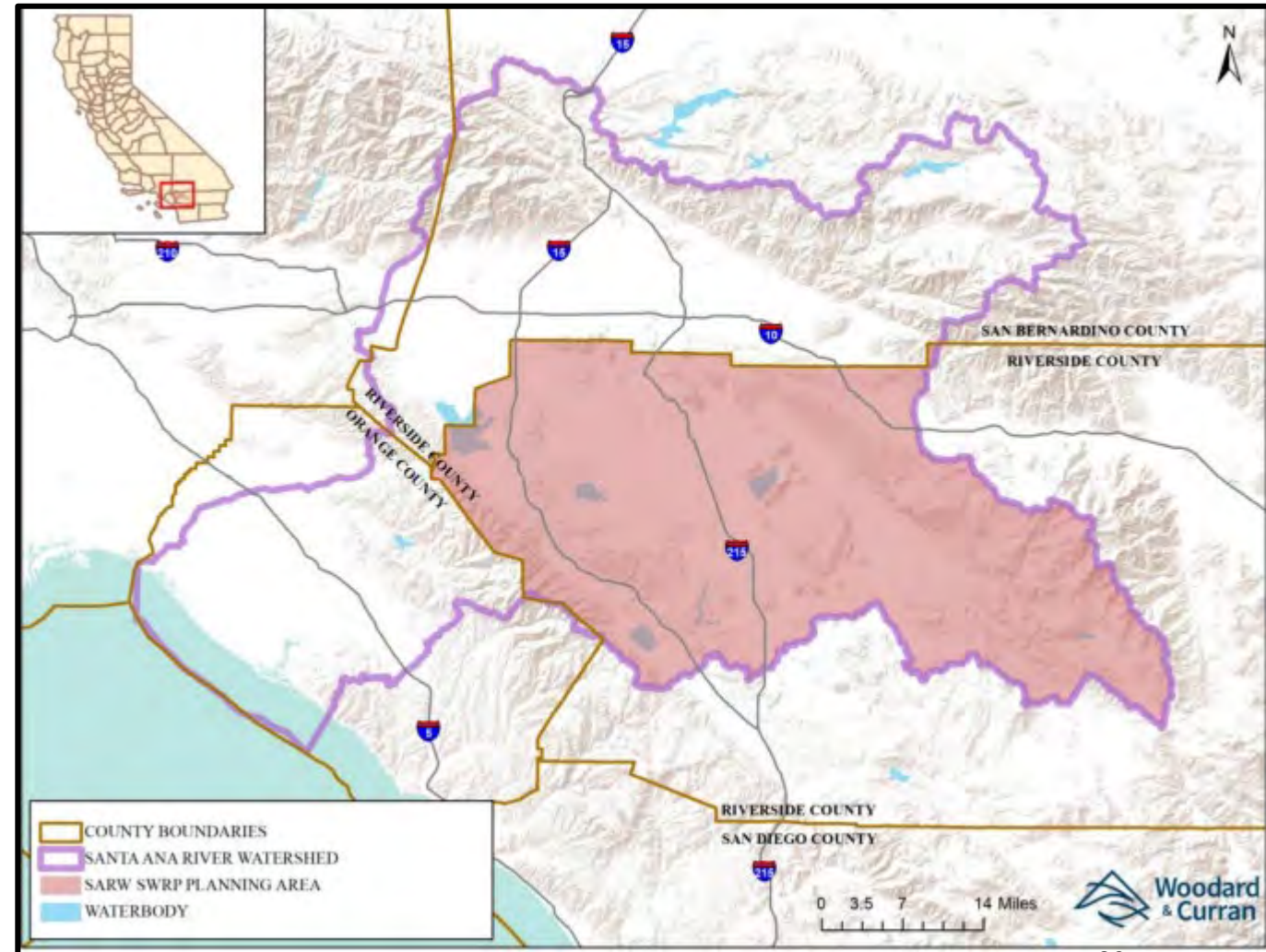
10

22



# Santa Ana Region Stormwater Resources Plan

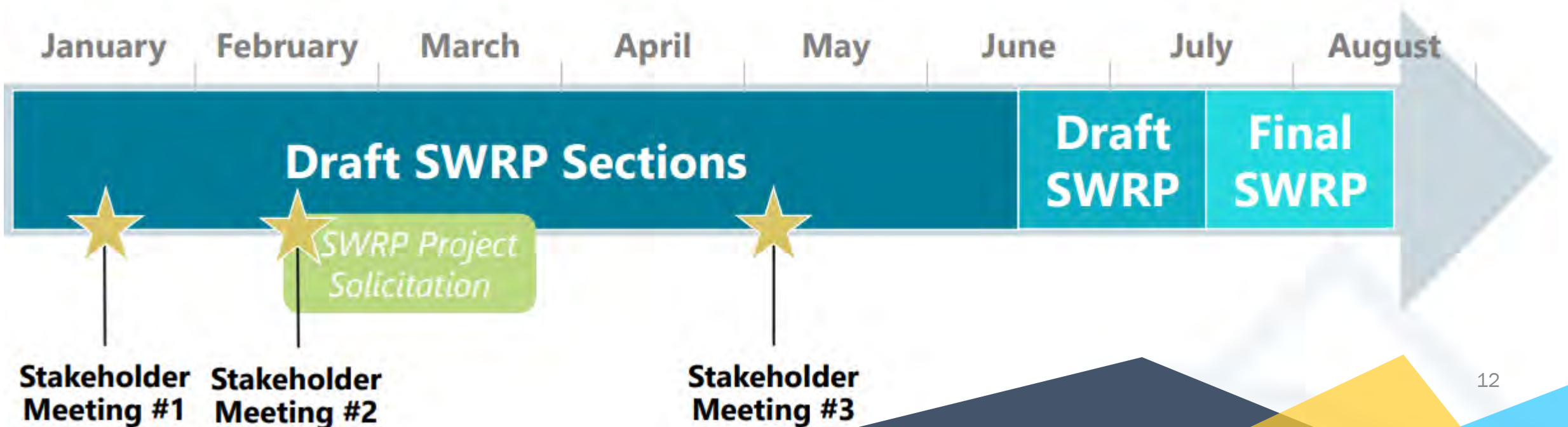
- *SWRP lead: Riverside County Flood Control and Water Conservation District*
- Other SWRPs in the Santa Ana Region:
  - Orange County SWRP
  - Chino Basin SWRP
  - San Bernardino SWRP
- All other SWRPs adopted into the OWOW Plan Update 2018



# Santa Ana Region Stormwater Resources Plan

## *SWRP Stakeholder Process*

2022:

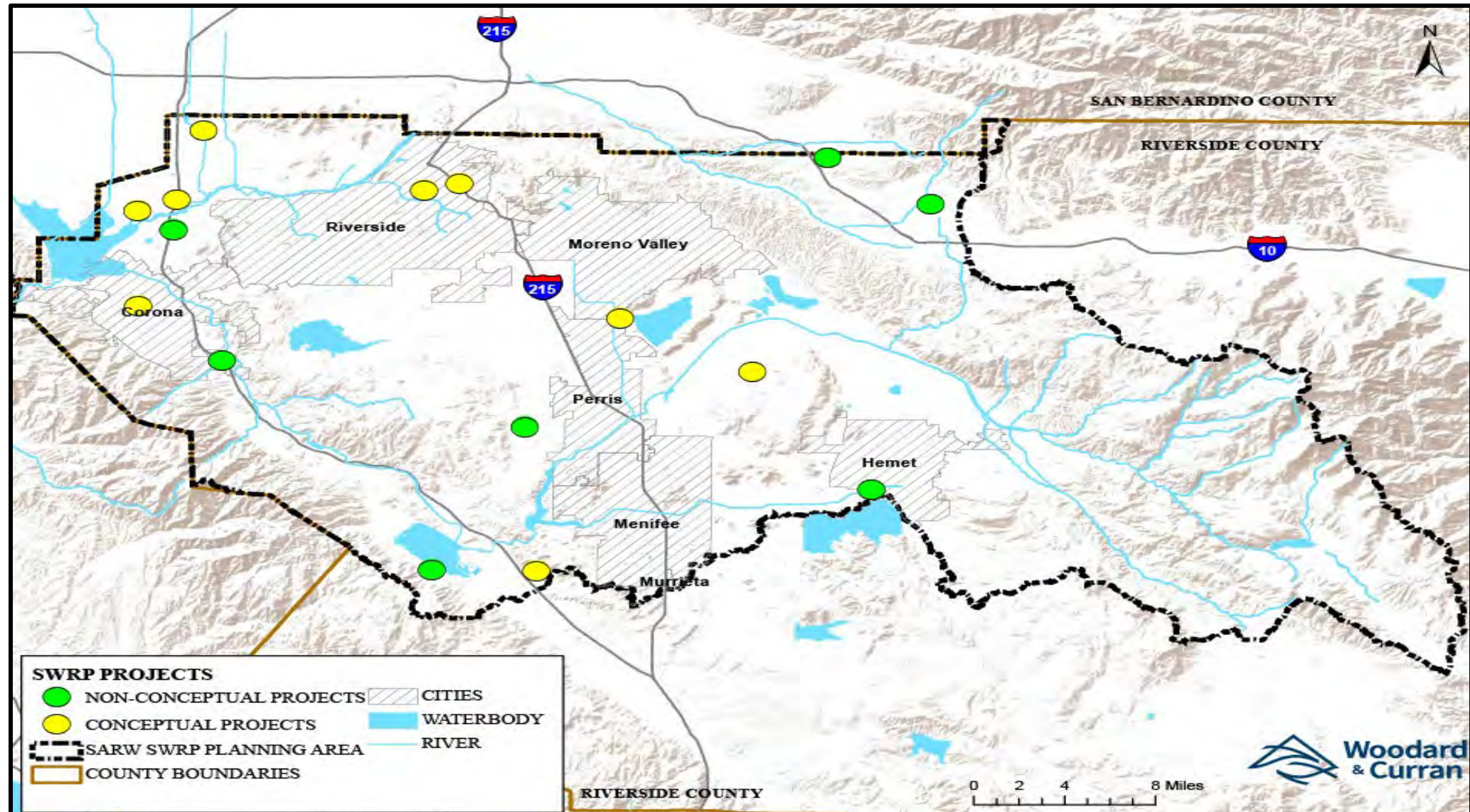


# Projects in the SWRP

Project Name	Project Proponent	Project Type	Benefit Categories Met
UC Riverside Gage Basin Green Infrastructure Restoration Phase I	University of California, Riverside Environmental Health & Safety	Conceptual	Water Quality, Flood Management, Environmental, Community
City of Hemet Salt Creek Mitigation Project	City of Hemet	Preliminary Design	Water Quality, Flood Management, Environmental, Community
Box Springs SD-Groundwater Rescharge at Kansas Basin	Riverside County Flood Control & Water Conservation District	Conceptual	Water Quality, Water Supply, Flood Management
Bradley Channel Enhancement Project	City of Perris	Conceptual	Water Quality, Water Supply, Flood Management, Environmental
North Norco Channel, Stage 11	Riverside County Flood Control & Water Conservation District	Ready to Implement	Water Quality, Flood Management
Lakeland Village MDP Line H	Riverside County Flood Control & Water Conservation District	Ready to Implement	Water Quality, Flood Management
Calimesa Channel Stage 3	City of Calimesa	In Design	Water Supply, Flood Management
Good Hope- Olive Avenue Storm Drain, Stages 1 and 2	Riverside County Flood Control & Water Conservation District	In Design	Water Quality, Flood Management
Eastvale Line D	Riverside County Flood Control & Water Conservation District	Conceptual	Water Quality, Water Supply
Eastvale Line E	Riverside County Flood Control & Water Conservation District	Conceptual	Water Quality, Water Supply
Lakeview Subbasin Recharge Feasibility Study	Eastern Municipal Water District	Conceptual	Water Quality, Water Supply
Day Creek Channel Water Conservation Restoration	Riverside County Flood Control & Water Conservation District	Conceptual	Water Supply, Environmental
Marshall Creek, Stage 1	Riverside County Flood Control & Water Conservation District	In Design	Water Quality, Flood Management, Community
Bedford Canyon Channel, Stage 1	Riverside County Flood Control & Water Conservation District	In Design	Flood Management
Temecula Basin Stormwater Capture and Recharge	City of Corona, Utilities Department	Conceptual	Water Quality, Water Supply
Sedco MDP Line F-2	City of Wildomar	Conceptual	Water Quality, Flood Management

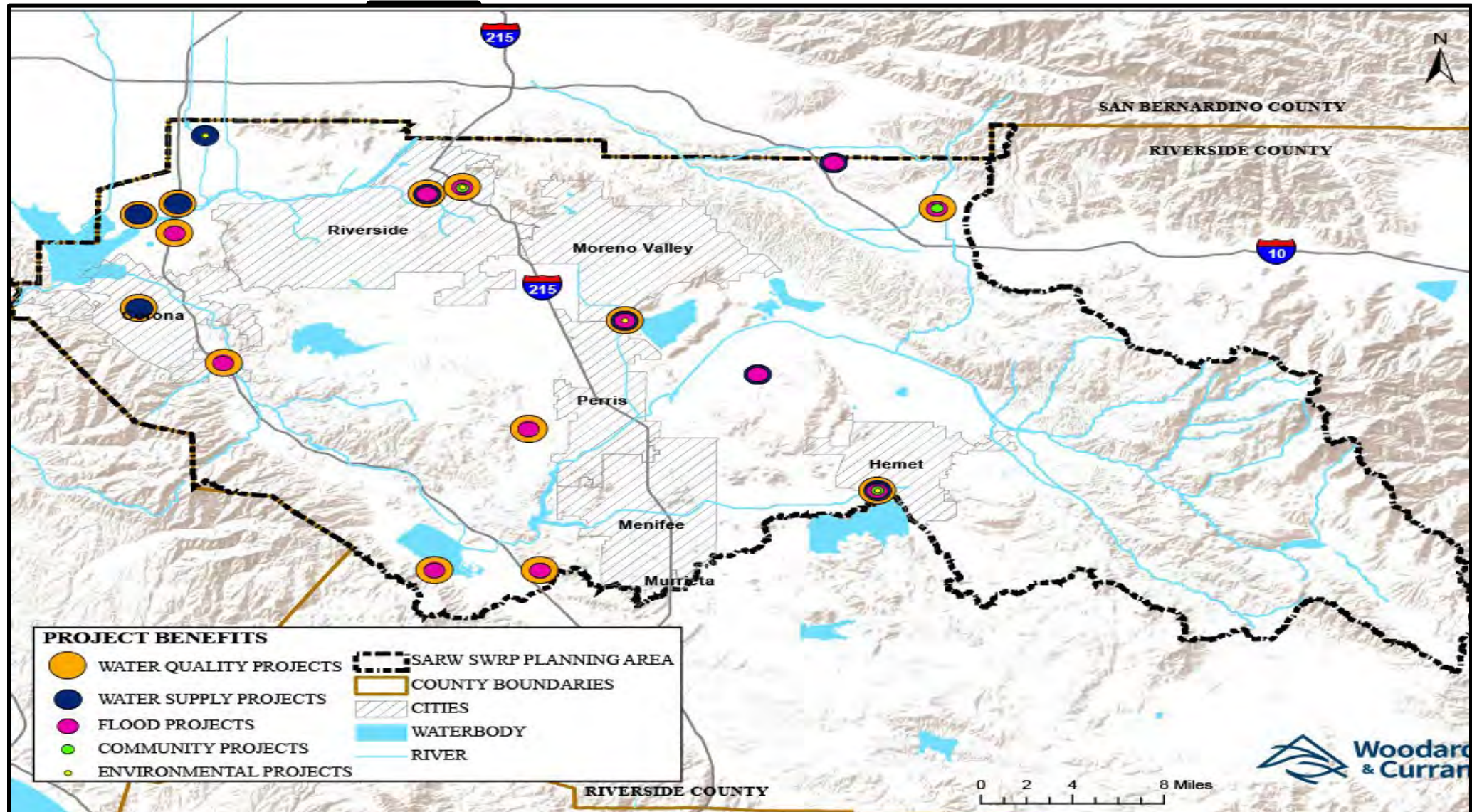


# Project Locations



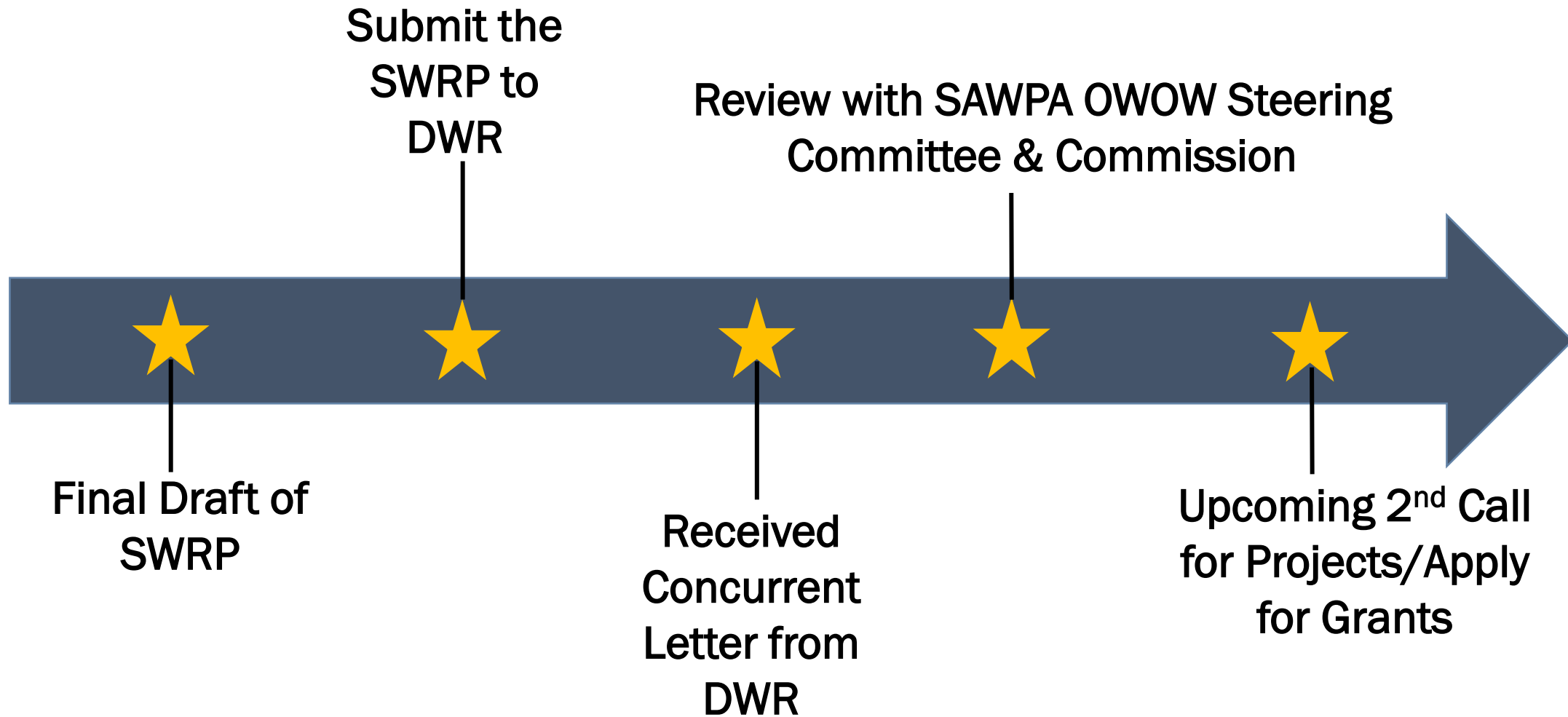


# Project Locations by Type



# Santa Ana Region Stormwater Resources Plan

- *What's next?*



# Questions?

- For more information:

<https://rcwatershed.org/watersheds/middle-santa-ana-river-watershed/engagement/>



- Rohini S. Mustafa, MPA, PE, QSD | Engineering Project Manager
  - [romustaf@rivco.org](mailto:romustaf@rivco.org)
- Andrea Macias, MPA, PE | Associate Civil Engineer
  - [almacias@rivco.org](mailto:almacias@rivco.org)



# Recommendation

It is recommended that the OWOW Steering Committee:

- 1) Receive a presentation from representatives of Riverside County Flood Control and Water Conservation District about the 2022 Riverside County Stormwater Resource Plan that covers the Santa Ana River Watershed portion of the County, and
- 2) Incorporate the 2022 Plan by reference in an appendix to the OWOW Plan Update 2018.





## Riverside County Santa Ana River Watershed

# STORMWATER RESOURCE PLAN

Final Report | October 2022



PREPARED BY



Woodard  
& Curran

# Riverside County Santa Ana River Watershed Stormwater Resource Plan

Final Report | October 2022

---

## Prepared For:

Riverside County Watershed  
Protection



Riverside County Flood Control &  
Water Conservation District



---

## Prepared By:



888 South Figueroa #1700  
Los Angeles, California 90017  
T 800.426.4262  
[www.woodardcurran.com](http://www.woodardcurran.com)

## **ACKNOWLEDGEMENTS**

Riverside County Flood Control and Water Conservation District prepared this Stormwater Resource Plan for the Riverside County portion of the Santa Ana River Watershed in collaboration with the Santa Ana Watershed Project Authority. Additional municipalities, water agencies, state agencies, nongovernmental organizations, community organizations, and other stakeholders contributed to the preparation of the plan through participation at stakeholder meetings and submittal of projects for inclusion in the Plan.

## TABLE OF CONTENTS

SECTION	PAGE NO.
<b>EXECUTIVE SUMMARY .....</b>	<b>ES-1</b>
<b>1. Introduction .....</b>	<b>1-1</b>
1.1 SWRP Purpose .....	1-1
1.2 Regulatory Background .....	1-1
1.3 SWRP Development Approach.....	1-2
1.4 SWRP Organization.....	1-2
<b>2. Watershed Identification.....</b>	<b>2-1</b>
2.1 Planning Area Watershed.....	2-1
2.2 Internal Boundaries.....	2-7
2.3 Water Quality Priorities.....	2-15
2.4 Surface and Groundwater Resources.....	2-18
2.5 Water Supply .....	2-19
2.5.1 Eastern Municipal Water District .....	2-20
2.5.2 Western Municipal Water District.....	2-20
2.5.3 San Geronio Pass Water Agency .....	2-21
2.5.4 Elsinore Valley Municipal Water District .....	2-21
2.6 Open Spaces and Natural Areas.....	2-21
2.7 Watershed Processes .....	2-24
<b>3. Water Quality Compliance.....</b>	<b>3-1</b>
3.1 Pollutant-Generating Activities.....	3-1
3.2 Applicable Permits and Plans .....	3-3
3.2.1 TMDL Compliance .....	3-3
3.2.2 NPDES Compliance .....	3-5
<b>4. Organization, Coordination, and Collaboration .....</b>	<b>4-1</b>
4.1 Coordination with Agencies and Nonprofit Organizations .....	4-1
4.1.1 Identification of Existing Groups .....	4-1
4.1.2 Coordination and Consultation.....	4-2
4.2 Community Participation .....	4-3
4.3 Governance and Decision-Making .....	4-4
4.3.1 Governance Structure.....	4-4
4.3.2 Decision-Making .....	4-5
4.4 Relationship of SWRP to Existing Planning .....	4-6
<b>5. Quantitative Methods.....</b>	<b>5-1</b>
5.1 SWRP Objectives .....	5-1
5.2 Benefit Metrics.....	5-1
5.3 Integrated Metrics-Based Analysis.....	5-3
5.3.1 Water Quality Benefits .....	5-8
5.3.2 Water Supply Benefit Analysis.....	5-11
5.3.3 Flood Management Benefits Analysis .....	5-13
5.3.4 Environmental and Community Benefit Analysis.....	5-15
5.4 Data Management.....	5-20

5.4.1	IRWM Program Data Management .....	5-20
5.4.2	MS4 Permit Data Management .....	5-20
5.4.3	SWRP Data Management.....	5-21
<b>6.</b>	<b>Identification and Prioritization of Projects.....</b>	<b>6-1</b>
6.1	Project Solicitation .....	6-1
6.2	Project Eligibility Screening .....	6-1
6.3	Project Prioritization.....	6-2
6.4	SWRP Priority Project Types .....	6-4
6.4.1	Opportunities to Augment Local Water Supply.....	6-5
6.4.2	Opportunities for Source Control of Pollutants .....	6-6
6.4.3	Opportunities to Reestablish Natural Water Drainage Treatment.....	6-6
6.4.4	Opportunities to Enhance Habitat and Open Space .....	6-6
6.4.5	Opportunities to Use Existing Publicly Owned Lands and Easements.....	6-7
6.5	Future Opportunities for Project Identification.....	6-7
6.6	Design Criteria and Best Management Practices .....	6-7
<b>7.</b>	<b>Implementation Strategy and Schedule .....</b>	<b>7-1</b>
7.1	Funding and Financing for SWRP Implementation .....	7-1
7.2	SWRP Projects, Programs, and Decision Support Tools .....	7-2
7.3	SWRP Implementation Strategy .....	7-4
7.3.1	IRWMP Submittal .....	7-4
7.3.2	Implementation Actions .....	7-5
7.3.3	Responsible Entities.....	7-5
7.3.4	Community Participation Strategy.....	7-5
7.3.5	Project Timelines and Status Tracking.....	7-6
7.3.6	Permitting Strategy and Timeline .....	7-6
7.3.7	SWRP Updates and Implementation Tracking.....	7-6
7.4	Other Performance Measures and Tracking.....	7-7
7.4.1	OWOW Plan .....	7-7
7.4.2	Lake Elsinore and Canyon Lake TMDL Task Force .....	7-8
7.4.3	MSAR Watershed TMDL Task Force.....	7-8
<b>8.</b>	<b>Education, Outreach, and Public Participation.....</b>	<b>8-1</b>
8.1	SWRP Audience .....	8-1
8.2	Outreach and Participation during SARW SWRP Development.....	8-3
8.2.1	Outreach for the OWOW Plan.....	8-3
8.2.2	Outreach for the SWRP .....	8-3
8.2.3	Initial Public Engagement Schedule .....	8-4
8.3	Outreach and Participation during SARW SWRP Implementation.....	8-5
8.4	Disadvantaged and Climate Vulnerable Communities, and Environmental Justice .....	8-6
8.4.1	Disadvantaged and Climate Vulnerable Communities.....	8-6
8.4.2	Environmental Justice .....	8-9
<b>9.</b>	<b>References.....</b>	<b>9-1</b>

## TABLE OF FIGURES

Figure 2-1: Santa Ana River Watershed SWRP Planning Area .....	2-2
Figure 2-2: Surface Waters .....	2-4
Figure 2-3: Subwatershed Boundaries.....	2-5
Figure 2-4: Cities and Unincorporated Communities.....	2-8
Figure 2-5: Land Use Agencies.....	2-9
Figure 2-6: Land Use .....	2-10
Figure 2-7: Tribal Lands in the SARW.....	2-11
Figure 2-8: Water District Service Area Boundaries.....	2-13
Figure 2-9: Groundwater Basins .....	2-14
Figure 2-10: 303(d)-Listed Water Bodies in the Planning Area .....	2-16
Figure 2-11: Conserved Lands .....	2-22
Figure 2-12: Forested Areas and Parks .....	2-23
Figure 2-13: RCFC&WCD Flood Control Systems and 100-Year Flood Zones.....	2-26
Figure 5-1: SWRP Project Locations.....	5-5
Figure 5-2: SWRP Projects and Multiple Benefits.....	5-7
Figure 5-3: Projects Providing Water Quality Benefits.....	5-10
Figure 5-4: Projects Providing Water Supply Benefits .....	5-12
Figure 5-5: Projects Providing Flood Management Benefits.....	5-14
Figure 5-6: Projects Providing Environmental Benefits .....	5-16
Figure 5-7: Projects Providing Community Benefits .....	5-18
Figure 6-1: Project Prioritization Category Weights .....	6-3
Figure 8-1: Disadvantaged Communities .....	8-7



## TABLE OF TABLES

Table 1-1: SWRP Sections Addressing SWRP Guidelines .....	1-2
Table 2-1: 303(d) Listed Impairments in the Planning Area .....	2-17
Table 2-2: TMDLs in the Planning Area.....	2-17
Table 2-3: Water Supplier Summary Information.....	2-20
Table 3-1: Pollutant-Generating Activities in Santa Ana River Watershed .....	3-1
Table 3-2: 2004 Nutrient TMDLs and Proposed Nutrient TMDLs for Canyon Lake and Lake Elsinore .....	3-4
Table 3-3: MSAR Bacterial Indicator TMDL.....	3-5
Table 4-1: Relationship of Existing Plans to the SWRP.....	4-6
Table 5-1: SWRP Main Benefits .....	5-2
Table 5-2: SWRP Additional Benefits.....	5-3
Table 5-3: Summary of SWRP Projects and Benefits .....	5-6
Table 5-4: Number of Projects Providing Water Quality Benefits .....	5-9
Table 5-5: Quantified Water Quality Benefits.....	5-9
Table 5-6: Number of Projects Providing Water Supply Benefits.....	5-11
Table 5-7: Quantified Water Supply Benefits .....	5-13
Table 5-8: Number of Projects Providing Flood Management Benefits.....	5-13
Table 5-9: Quantified Flood Management Benefits.....	5-15
Table 5-10: Number of Projects Providing Environmental Benefits.....	5-17
Table 5-11: Number of Projects Providing Community Benefits .....	5-19
Table 5-12: Quantified Community Benefits.....	5-19
Table 7-1: Potential Funding Mechanisms for SWRP Implementation.....	7-2
Table 8-1: Agencies/Organizations Represented on Stakeholder Contact List.....	8-1
Table 8-2: Summary of Public Stakeholder Meetings.....	8-4

## LIST OF APPENDICES

Appendix A – SWRP Checklist and Self-Certification

Appendix B – Riverside County SARW SWRP Stakeholder List

Appendix C – Project Information and Prioritization

## ACRONYMS AND ABBREVIATIONS

ACS	American Community Survey
AF	acre-feet
AFY	acre-feet per year
AGR	agricultural supply
BMP	best management practice
CBRP	Comprehensive Bacteria Reduction Plan
CEDEN	California Environmental Data Exchange Network
CEQA	California Environmental Quality Act
cfs	cubic feet per second
CMP	Consolidated Management Plan
CNRP	Comprehensive Nutrient Reduction Plan
COMM	commercial and sportfishing
CRA	Colorado River Aqueduct
DAC	disadvantaged communities
DAMP	Riverside County Drainage Area Management Plan
DDT	dichloro-diphenyl-trichloroethane
DWR	Department of Water Resources
<i>E. Coli</i>	<i>Escherichia coli</i>
EMWD	Eastern Municipal Water District
EVMWD	Elsinore Valley Municipal Water District
GSP	Groundwater Sustainability Plan
GWR	groundwater recharge
HMP	Hydromodification Management Plan
HUC	hydrologic unit code
IEUA	Inland Empire Utilities Agency
IRWM	Integrated Regional Water Management
JPA	Joint Powers Authority
kg/year	kilograms per year
kWh	kilowatt-hours
lbs/day	pounds per day
LECL	Lake Elsinore and Canyon Lake
LESJWA	Lake Elsinore & San Jacinto Watersheds Authority
LHMP	Local Hazard Mitigation Plan
LID	low impact development
MAC	Municipal Advisory Committee
MCL	maximum contaminant level
Metropolitan	Metropolitan Water District of Southern California
mg/L	milligrams per liter
MHI	median household income
MOU	memorandum of understanding
MPN	most probable number
MS4	Municipal Separate Storm Sewer System
MS4 Permit	Order No. R8-2010-0033, NPDES Permit No. CAS618033

MSAR	Middle Santa Ana River
MSAR-SJR	Middle Santa Ana River and San Jacinto River
MSHCP	Multi-Species Habitat Conservation Plan
MUN	municipal and domestic water supply
NEPA	National Environmental Policy Act
NPDES	National Pollutant Discharge Elimination System
OCWD	Orange County Water District
OWOW	One Water One Watershed
PCBs	polychlorinated biphenyls
Planning Area	Riverside County Santa Ana River SWRP Planning Area
PQP	public and quasi-public
RARE	rare, threatened, or endangered species
RCFC&WCD	Riverside County Flood Control and Water Conservation District
REC1	contact recreation
REC2	non-contact recreation
RWMG	Regional Water Management Group
SARW	Santa Ana River Watershed
SARWQCB	Santa Ana Regional Water Quality Control Board
SAWPA	Santa Ana Watershed Project Authority
SBVMWD	San Bernardino Valley Municipal Water District
SGPWA	San Geronio Pass Water Agency
SPWN	spawning, reproduction, and development
SWP	State Water Project
SWPPP	Storm Water Pollution Prevention Plan
SWRCB	State Water Resources Control Board
SWRP	Stormwater Resource Plan
TDS	total dissolved solids
TMDL	total maximum daily load
USGS	United States Geological Survey
UWMP	Urban Water Management Plan
WAP	Watershed Action Plan
WARM	warm freshwater habitat
WILD	wildlife habitat
WMWD	Western Municipal Water District
WQMP	Water Quality Management Plan

## EXECUTIVE SUMMARY

Riverside County Flood Control and Water Conservation District (RCFC&WCD) developed this Stormwater Resource Plan (SWRP) for the Riverside County portion of the Santa Ana River Watershed (SARW) in compliance with the California Water Code sections 10560 through 10565 requirements for stormwater resource planning and the State Water Resources Control Board's (SWRCB)'s 2015 SWRP Guidelines.

The Riverside County SARW SWRP is an integrated planning document that focuses on regional watershed-based stormwater priorities within the SWRP Planning Area (Planning Area). The purpose of the SWRP is to identify, assess, and emphasize multi-benefit projects that utilize stormwater as a resource, prioritizing projects that can best address the water resource management goals in the Planning Area. Projects included in the SWRP provide multiple benefits including improved water quality, augmented water supply, reduced flood risk, and enhanced environmental or community conditions. The SWRP also facilitates collaboration between agencies and organizations through development of regional stormwater and dry weather runoff solutions, better positioning the agencies and projects for future funding opportunities.

### ES-1 Introduction

The Riverside County SARW SWRP was developed as a “functionally equivalent” SWRP, referencing existing documents where possible and including new SWRP-specific information for items not covered in the existing documents.

The SWRP leverages ongoing cooperative water management planning efforts in the Planning Area, including the Integrated Regional Water Management (IRWM) Program. The IRWM Program, administered in the SARW Region by the Santa Ana Watershed Project Authority (SAWPA), supports a regional understanding of water resources, advances regional water projects, and maximizes project benefits through agency collaboration and integration. The SARW IRWM Program's One Water One Watershed (OWOW) Plan is a key document referenced in this SWRP.

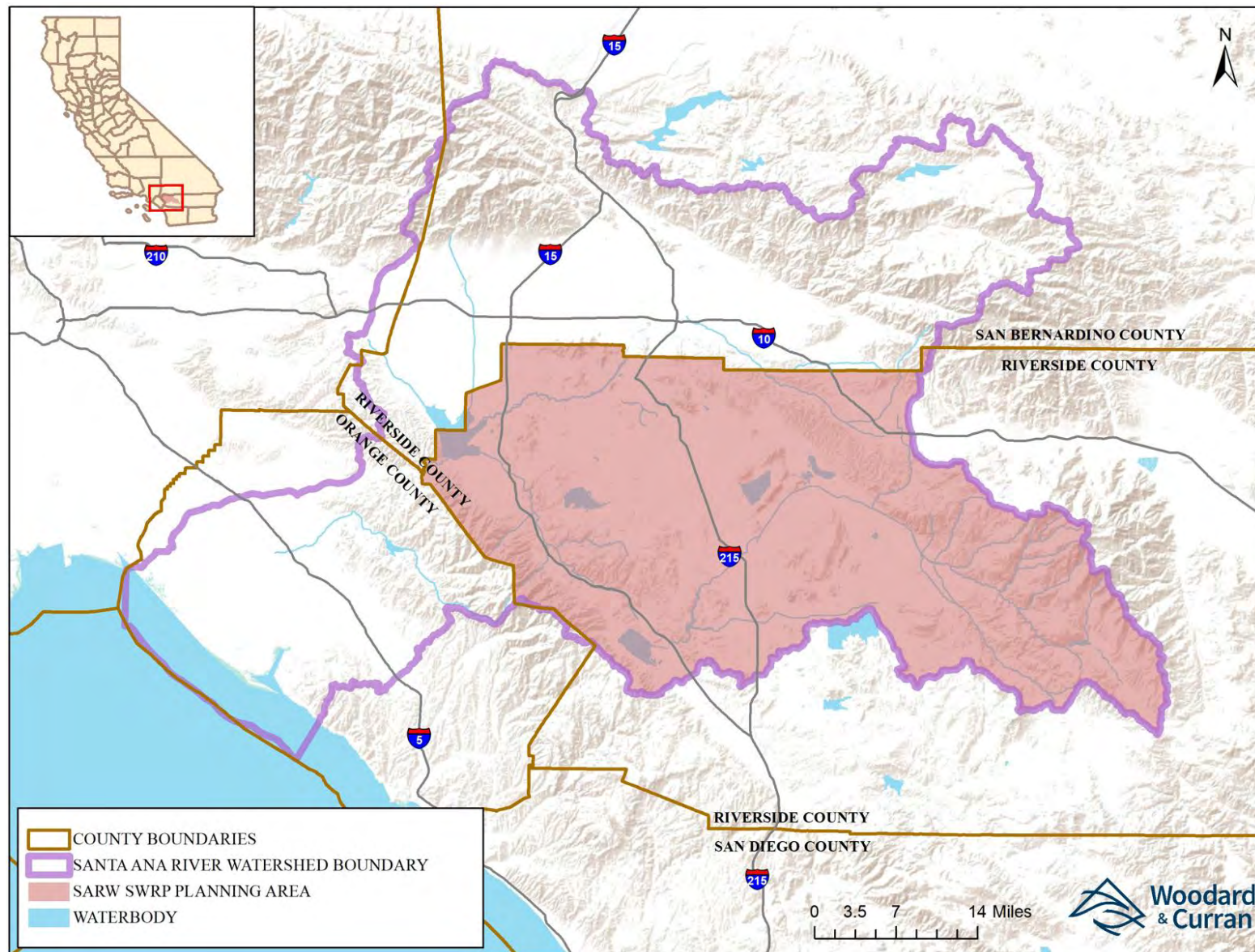
Additionally, agencies in the Planning Area have coordinated activities pertaining to the Municipal Separate Storm Sewer System (MS4) Permit (Order No. R8-2010-0033, as amended by Order No. R8-2013-0024) and total maximum daily loads (TMDLs), as discussed in this SWRP. Plans and programs developed to address the MS4 Permit and TMDLs are provided as additional references for this functionally equivalent SWRP.

### ES-2 Watershed Identification

The Planning Area, shown in Figure ES-1, encompasses the portion of the SARW that falls within Riverside County in southern California. The entire SARW spans approximately 2,650 square miles in portions of Orange, Riverside, San Bernardino, and Los Angeles counties, approximately 1,260 square miles of which are within Riverside County. The Planning Area is bounded by the SARW boundary to the south and east, by Orange County to the southwest, and by San Bernardino County to the north and northeast. The selected Planning Area also aligns to the south and east with the SARW IRWM Region boundary that follows the boundary of the SARW.



**Figure ES-1: Santa Ana River Watershed SWRP Planning Area**



Within the Planning Area, major topographic features include the Santa Ana and San Jacinto mountains. Major surface waters include Prado Flood Control Basin, Lake Mathews, Lake Perris, Lake Hemet, Canyon Lake, Lake Elsinore, San Jacinto River, Temescal Creek, Bedford Wash, Salt Creek, Potrero Creek, Bautista Creek, portions of San Timoteo Creek, and Santa Ana River. The two major subwatersheds within the SWRP Planning Area include the Middle Santa Ana River (MSAR) Subwatershed and the San Jacinto River Subwatershed. The MSAR Subwatershed is primarily located between the southwest corner of San Bernardino County and the northwest corner of Riverside County to the Prado Flood Control Basin near Orange County. The San Jacinto River Subwatershed covers the southeastern portion of the Planning Area and is comprised of the Upper, Middle, and Lower San Jacinto subwatersheds.

The 15 incorporated cities within the Planning Area include Jurupa Valley, Eastvale, Norco, Corona, Riverside, Moreno Valley, Perris, Menifee, Lake Elsinore, Canyon Lake, San Jacinto, Hemet, Beaumont, Calimesa, and Wildomar. Land uses within the SWRP Planning Area are primarily agricultural, commercial, industrial, open space, rural, and urban. Four of the major water suppliers within the Planning Area include Eastern Municipal Water District, Western Municipal Water District, San Gorgonio Pass Water Agency, and Elsinore Valley Municipal Water District. Water sources include local surface water, groundwater, imported water, recycled water, other purchased water, and transfers/exchanges.

Several water bodies in the Planning Area do not meet protective water quality standards and have been placed on California's Clean Water Act Section 303(d) list of impaired water bodies. Impaired water bodies within the Planning Area include Prado Basin Management Zone, Canyon Lake, Lake Elsinore, and segments of Goldenstar Creek, San Timoteo Creek Reach 3, and Santa Ana River Reaches 3 and 4. Bacteria, nutrients, and copper are the most common constituents that impair surface water bodies in the Planning Area. Groundwater basins have been degraded due to elevated concentrations of total dissolved solids (TDS) and high salinity.

### ES-3 Water Quality Compliance

Major pollutants of concern in the Planning Area include bacteria and nutrients. Two TMDLs were established to address these water quality issues: the Lake Elsinore and Canyon Lake Nutrient TMDLs and the MSAR Bacterial Indicator TMDL. Key TMDL implementation plans discuss pollutant sources including urban, agricultural and undeveloped sites. The Planning Area includes two task forces developed specifically to address the TMDLs: the Lake Elsinore and Canyon Lake TMDL Task Force, a multi-agency task force to address nutrient TMDLs for Lake Elsinore and Canyon Lake, and the MSAR Watershed TMDL Task Force, a multi-stakeholder group developed to coordinate TMDL implementation activities to eliminate sources of bacterial indicators in the MSAR subwatershed.

The primary waste discharge permit applicable within the Planning Area is the Phase I MS4 Permit for the Santa Ana Region. In January 2010, the Santa Ana Regional Water Quality Control Board (SARWQCB) adopted Order No. R8-2010-0033, National Pollutant Discharge Elimination System (NPDES) Permit No. CAS618033, *NPDES Permit and Waste Discharge Requirements for the RCFC&WCD, the County of Riverside, and the Incorporated Cities of Riverside County within the Santa Ana Region* (MS4 Permit), for urban areas to regulate discharges from Phase 1 MS4s. The MS4 Permit includes 16 Permittees: RCFC&WCD as Principal Permittee, the County of Riverside, and the cities of Beaumont, Calimesa, Canyon Lake, Corona, Eastvale, Hemet, Jurupa Valley, Lake Elsinore, Menifee, Moreno Valley, Norco, Perris, Riverside, and San Jacinto. The MS4 Permit expired in January 2015 but was issued an Administrative Extension until a new permit is adopted. The new regional permit is anticipated to be adopted in 2023 and will cover all three counties in the Santa Ana Region and include new requirements and permit compliance pathways.

## ES-4 Organization, Coordination, and Collaboration

RCFC&WCD facilitated the preparation of the Riverside County SARW SWRP, but planning and collaboration during development of the plan leveraged existing frameworks established for related programs and planning efforts including the OWOW Plan, MS4 Permit, and TMDL task forces. The OWOW Plan implementation is led by SAWPA, its member agencies, and the OWOW Steering Committee. RCFC&WCD coordinated with SAWPA during SWRP development to facilitate future SWRP implementation and integration with the OWOW Plan. Stakeholders had the opportunity to participate by attending SWRP workshops and by submitting projects to the SWRP.

Additional interagency coordination occurs within the Planning Area as it pertains to the MS4 Permit. Since the adoption of the MS4 Permit in 2010, the 16 Permittees have collaborated to prepare and implement plans and programs in compliance with the MS4 Permit, including but not limited to the *Consolidated Monitoring Program*, *Riverside County Drainage Area Management Plan*, *Water Quality Management Plan*, and *Watershed Action Plan*. The Permittees will continue coordination efforts to perform tasks as required by the MS4 Permit and the SARWQCB. Projects included in this SWRP support compliance with the MS4 Permit requirements and assist in the implementation of the associated plans and programs.

## ES-5 Quantitative Methods

One of the integral components of the SWRP is the inclusion of a metrics-based and integrated analysis of multiple benefits to maximize water quality, water supply, flood management, environmental, and other community benefits within the watershed. The primary quantitative methodologies used in the SWRP consist of the project prioritization methodology, the quantitative methods used by project sponsors to determine project benefits, and the method for assessing overall SWRP benefits.

Anticipated SWRP project benefits were aggregated to evaluate projected progress towards achieving the SWRP objectives. As projects are implemented and benefits are achieved, the SWRP's progress toward addressing stormwater management goals in the Planning Area will be re-evaluated. The projects included in the SWRP integrated analysis are shown in Figure ES-2.

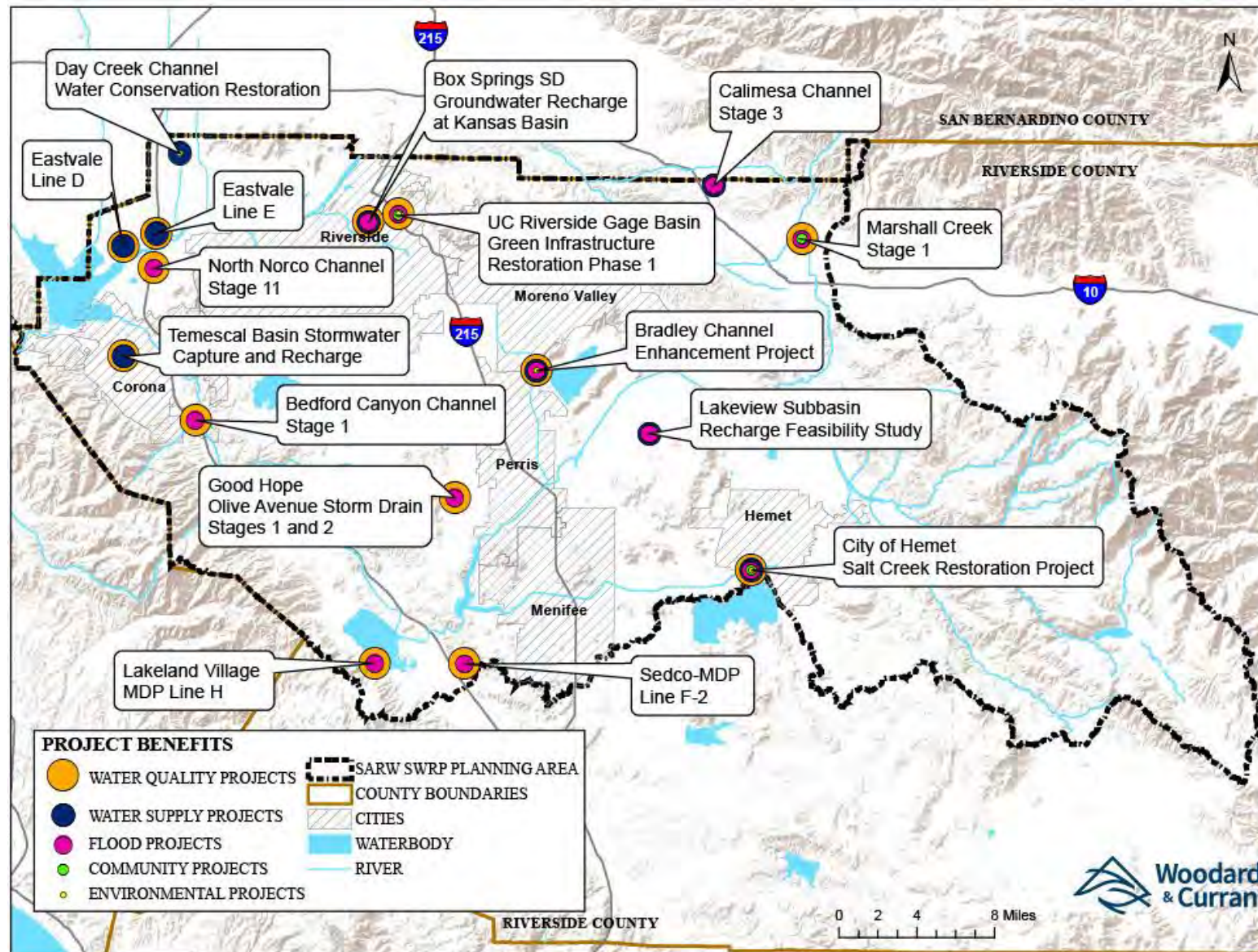
The projects included in the SWRP will provide water quality benefits such as improved treatment of runoff, nonpoint source pollution control, and reestablishment of natural water drainage and treatment. Collectively, the projects will treat 8.4 acre-feet per year (AFY) of runoff.

SWRP project benefits related to water supply include water supply reliability, conjunctive use, and water conservation. In total, SWRP projects will increase water supply through direct groundwater recharge by 16,003 AFY. Increases in recycled water supply will also increase by 326 AFY to provide additional water supply benefits in the Planning Area.

SWRP projects are also anticipated to provide flood management benefits by decreasing flood risk. SWRP projects will reduce peak flow discharge by 1,405 cubic feet per second. Across the Planning Area, the SWRP projects will also reduce volume of potential flood water by 136 acre-feet (AF).



Figure ES-2: SWRP Projects and Multiple Benefits





The SWRP projects also provide environmental benefits, including environmental and habitat protection and improvement, increased urban green space, reduced energy use or reduced greenhouse gas emissions, and reestablishment of the natural hydrograph. Many projects indicated they will provide additional environmental benefits which were not yet quantified.

Community benefits identified in the SWRP include public education, community involvement, and expanded public use areas. Quantified community benefits in the SWRP include one project that will provide 2 different types of outreach materials. Several other community benefits are anticipated but not yet quantified.

## **ES-6 Identification and Prioritization of Projects**

The SWRP established a process by which projects were solicited for the SWRP, reviewed for eligibility, and then prioritized based on set scoring criteria.

A Call for Projects occurred from February 16, 2022, to March 25, 2022, to gather project information for the SWRP. Project sponsors were asked to submit a completed project submittal form to be considered for inclusion in the SWRP. The project submittal form asks project sponsors to provide basic information for project review and prioritization, including lead agency, project description, location, cost, planning/implementation status, and project benefits (both qualitative and quantitative). An electronic project submittal form was distributed via email to the stakeholder contact list and made publicly available on the Riverside County SARW SWRP webpage on the Riverside County Watershed Protection website. A virtual information session was held via webinar on February 16, 2022 to further promote and facilitate project submittal. A total of 16 conceptual and non-conceptual projects were submitted to the SWRP and deemed eligible for inclusion in the SWRP. Conceptual projects are projects in the early planning phase with no design work completed. Non-conceptual projects are projects that are currently in design or ready to implement.

The project prioritization methodology was based on a combination of measurable factors that assess a project's feasibility and ability to provide water quality, water supply, flood management, environmental, and community benefits. Projects were prioritized with respect to four main categories: 1) SWRP main and additional benefits, 2) quantified benefits, 3) project feasibility, and 4) watershed priorities. The watershed priorities include:

- Supporting TMDL(s);
- Reducing pollutant loading to 303(d)-listed water bodies;
- Providing groundwater recharge;
- Protecting or enhancing habitat and/or wildlife corridors (e.g., riparian areas, vernal pools, etc.) from the Western Riverside Multi-Species Habitat Conservation Plan; and
- Providing benefits to a disadvantaged community (DAC).

The prioritization methodology uses a point system reflecting the Planning Area and SWRP Guidelines priorities.

## **ES-7 Implementation Strategy and Schedule**

Implementation of the SWRP will be achieved primarily through the implementation of the individual SWRP projects. After project completion, projects may be monitored to ensure the goals of the projects are being met, and the expected benefits are occurring. Periodically (every five years, or as needed), the SWRP itself will be evaluated to ensure the document reflects current conditions, and to evaluate progress toward achieving the stormwater management goals.

To date, the RCFC&WCD has funded the coordination and facilitation efforts to develop the Riverside County SARW SWRP. Funding for future SWRP administration and periodic updates will be secured on an as-needed basis and may be provided by RCFC&WCD. Individual project sponsors will be responsible for procuring funding and financing for advancing individual projects from the conceptual and planning phases through the construction and operations and maintenance phases. Funding mechanisms may include ratepayer charges, loans, and grant programs.

## **ES-8 Education, Outreach, and Public Participation**

One of the primary outreach methods used for SWRP development and implementation is the SWRP email contact list. Building upon the foundational community outreach, public education, and stakeholder participation that occurred during the development of the OWOW Plan, the SWRP leveraged the OWOW Plan stakeholder contact list as a starting point to develop the SWRP stakeholder list. Contacts on the SWRP stakeholder list received periodic emails with information about the status of the Riverside County SARW SWRP planning process and opportunities for engagement. Email notifications included meeting announcements, meeting agendas and materials, key dates for the Call for Projects, the project submittal form, the SWRP project list, and the Final SWRP.

Project sponsors are responsible for ensuring robust community engagement during the design and implementation of projects and related funding pursuits. Project implementation will require funding approval from the implementing agency's governing body. This approval would take place at a public meeting such as a board meeting or City Council meeting, which require public noticing and have opportunities for public comment (including on technical and/or policy issues). For projects subject to the California Environmental Quality Act and/or National Environmental Policy Act, the public will also have an opportunity to provide public comment during the review process prior to project implementation.

DAC and climate vulnerable community outreach efforts conducted during the SWRP planning process are consistent with the recommended management strategy included in the OWOW Plan to adopt best practices for engagement and participation. Ongoing community, DAC, and climate vulnerable community involvement in the planning process will be tracked through the SWRP stakeholder list and project submittals.

## SUBREGIONAL PLANS

Water and land managers throughout the watershed make plans to drive investments and future operations. Some plans, like Urban Water Management Plans, are mandated by the state, while some are completed voluntarily. Others are collaborative planning efforts, integrated plans either in name or in principle. The Santa Ana River Watershed benefits from the work these plans set in motion, and the long-term sustainability of water management in the watershed in many ways will come primarily from those planning efforts.

The OWOW Plan Update 2018 thinks at the scale of the entire watershed, which is made up of all the smaller areas that the other plans consider. Only the Basin Plan of the Santa Ana Regional Board considers the same geographic extent as the OWOW Program. The OWOW Plan Update 2018, however, is unlike the subregional plans and the Basin Plan in that it considers a broad set of interrelated issues, all critical to the sustainability of the watershed. In this effort to broadly define what is important to managing the watershed sustainably, the OWOW Plan Update 2018 relies on all the subregional plans that grapple with some aspect that the OWOW Program knows is important.

A list of subregional plans and plans that impact an area larger than the watershed that are related to the goals and objectives selected by the stakeholders of the OWOW Plan Update 2018 process is included below. This list is in no way exhaustive; because of the extent of the watershed is so great both in size and in population, including every plan is impossible. The OWOW Program page at [www.sawpa.org](http://www.sawpa.org) will maintain a living list of related plans that are completed in the watershed.

Referencing other plans is an important acknowledgment that the OWOW Plan Update 2018 is an (upside-down) umbrella, supporting these other planning efforts by reflecting their interrelationships and encouraging actions that will achieve multiple objectives scattered across the subregional plans. For example, a general plan may consider the restoration of a creek as a recreational asset, while a stormwater resource management plan may consider that same creek as an infiltration opportunity. The OWOW Plan Update 2018 encourages the entities pursuing those two efforts to collaborate and ensure that the project achieves both goals. In this way the OWOW Plan Update 2018 suggests that, if the subregional plans are carried out, particularly in an integrated way built on partnerships, the overall goals in the watershed can be achieved.

Other plans whose “owners” approached the OWOW Steering Committee to take official action to include a subregional plan in the OWOW Plan Update 2018 are designated in the table below. Some of these requests are driven by state policy (the stormwater resource management plans), and some are driven by the decision to align with and share support between the included plan and the OWOW Plan Update 2018.

Plan Name (alphabetical)	Organization	Link	Included by OWOW Steering Committee?
2015 San Bernardino Valley Regional Urban Water Management Plan	San Bernardino Valley Municipal Water District led collaborative effort	<a href="http://www.sbvmd.com/home/showdocument?id=4196">http://www.sbvmd.com/home/showdocument?id=4196</a>	
2016 Chino Basin Storm Water Resources Plan: Functional Equivalency Document	Chino Basin Watermaster	<a href="https://www.ieua.org/stormwater-resources-plan/">https://www.ieua.org/stormwater-resources-plan/</a>	Yes
2020 San Bernardino Valley Integrated Regional Urban Water Management Plan	Bernardino Valley Municipal Water District led collaborative effort	<a href="https://www.sbvmd.com/reports/-folder-1120">https://www.sbvmd.com/reports/-folder-1120</a>	Yes
Alluvial Fan Task Force Findings and Recommendations Report	California Department of Water Resources	No link. Please contact SAWPA.	
California Ocean Plan	State Water Resources Control Board	<a href="https://www.waterboards.ca.gov/water_issues/programs/ocean/">https://www.waterboards.ca.gov/water_issues/programs/ocean/</a>	
California Water Plan Update 2018	California Department of Water Resources	<a href="https://water.ca.gov/Programs/California-Water-Plan/Update-2018">https://water.ca.gov/Programs/California-Water-Plan/Update-2018</a>	
Cleveland National Forest Land Management Plan	United States Department of Agriculture Forest Service	<a href="https://www.fs.usda.gov/main/cleveland/landmanagement/planning">https://www.fs.usda.gov/main/cleveland/landmanagement/planning</a>	
Hemet / San Jacinto Groundwater Management Area Water Management Plan	Eastern Municipal Water District led collaborative effort	<a href="https://www.dropbox.com/sh/ok0kxmhpht4ymtv/AA27jxXikBfgQqSAynredWka/Reports?dl=0&amp;preview=Water+Management+Plan.pdf&amp;subfolder_nav_tracking=1">https://www.dropbox.com/sh/ok0kxmhpht4ymtv/AA27jxXikBfgQqSAynredWka/Reports?dl=0&amp;preview=Water+Management+Plan.pdf&amp;subfolder_nav_tracking=1</a>	
Integrated Water Resources Plan	Inland Empire Utilities Agency	<a href="https://www.ieua.org/download/draft-irp-3-23-16/">https://www.ieua.org/download/draft-irp-3-23-16/</a>	
Integrated Water Resources Plan	Metropolitan Water District of Southern California	<a href="https://www.mwdh2o.com/how-we-plan/integrated-resource-plan/">https://www.mwdh2o.com/how-we-plan/integrated-resource-plan/</a>	
Land Management Plan for San Bernardino National Forest	United States Department of Agriculture Forest Service	<a href="https://www.fs.usda.gov/main/sbnf/landmanagement/planning">https://www.fs.usda.gov/main/sbnf/landmanagement/planning</a>	
Long-Term Facilities Plan	Orange County Water District	<a href="https://www.ocwd.com/what-we-do/sound-planning/long-term-facilities-plan/">https://www.ocwd.com/what-we-do/sound-planning/long-term-facilities-plan/</a>	

Plan Name (alphabetical)	Organization	Link	Included by OWOW Steering Committee?
Natural Community Conservation Plan / Habitat Conservation Plan for the Central and Coastal Subregion of Orange County	Natural Communities Coalition	<a href="https://oconconservation.org/about-ncc/">https://oconconservation.org/about-ncc/</a>	
Newport Bay Watershed Idea Book	Newport Bay Conservancy	<a href="http://newportbay.org/watershed/watershed-coordinator/">http://newportbay.org/watershed/watershed-coordinator/</a>	Yes
North and Central Orange County Watershed Management Area Integrated Regional Water Management Plan	Orange County Public Works	<a href="https://www.northocirwm.org/">https://www.northocirwm.org/</a>	Yes
Orange County Stormwater Resource Plan	Orange County Public Works	<a href="https://www.northocirwm.org/pages/stormwater">https://www.northocirwm.org/pages/stormwater</a>	Yes
Orange County Trails Master Plan	Parks and Recreation Division of Orange County	<a href="https://ocparks.com/parks-trails/regional-trails">https://ocparks.com/parks-trails/regional-trails</a>	
Riverside Arroyo Watershed Policy Study Recommendations	County of Riverside City of Riverside	<a href="https://www.rcrcd.org/conserving-waterways">https://www.rcrcd.org/conserving-waterways</a>	
Riverside County Santa Ana River Watershed Stormwater Resource Plan	Riverside County Flood Control & Water Conservation District	<a href="https://rcwatershed.org/watersheds/middle-santa-ana-river-watershed/engagement/">https://rcwatershed.org/watersheds/middle-santa-ana-river-watershed/engagement/</a>	1/26/2023
San Bernardino County Stormwater Resource Plan	San Bernardino County Flood Control District	<a href="https://dpw.sbcounty.gov/santa-ana-river-watershed-stormwater-resource-plan/">https://dpw.sbcounty.gov/santa-ana-river-watershed-stormwater-resource-plan/</a>	Yes
Santa Ana River Parkway and Open Space Plan	California Coastal Conservancy	<a href="http://scc.ca.gov/files/2018/06/SARPOSP_Plan_FINAL.pdf">http://scc.ca.gov/files/2018/06/SARPOSP_Plan_FINAL.pdf</a>	Yes
Upper Santa Ana River Integrated Regional Water Management Plan	San Bernardino Valley Municipal Water District	<a href="https://www.sbvwd.org/our-projects/upper-santa-ana-integrated-regional-water-management-plan.html">https://www.sbvwd.org/our-projects/upper-santa-ana-integrated-regional-water-management-plan.html</a>	
Water Control Plan for the Santa Ana River Basin	Santa Ana Regional Water Quality Control Board	<a href="https://www.waterboards.ca.gov/santaana/water-issues/programs/basin_plan/">https://www.waterboards.ca.gov/santaana/water-issues/programs/basin_plan/</a>	
Western Riverside County Multiple Species Habitat Conservation Plan	Regional Conservation Authority of Western Riverside County	<a href="http://www.wrc-rca.org/about-rca/multiple-species-habitat-conservation-plan/">http://www.wrc-rca.org/about-rca/multiple-species-habitat-conservation-plan/</a>	

Page Intentionally Blank

## **OWOW STEERING COMMITTEE MEMORANDUM NO. 2023.3**

**DATE:** January 26, 2023

**TO:** OWOW Steering Committee

**SUBJECT:** Proposition 1 Round 2 Integrated Regional Water Management Application Update

**PREPARED BY:** Ian Achimore, Senior Watershed Manager

### **RECOMMENDATION**

Receive and file.

### **DISCUSSION**

Since the OWOW Steering Committee and SAWPA Commission approved thirteen projects recommended by SAWPA staff at their previous meetings, staff has worked with the various project leads to submit the Proposition 1 Round 2 IRWM grant application to the lead State agency, the Department of Water Resources (DWR), by the deadline of February 1, 2023.

After the application is submitted, the following next steps will occur:

- Projects are all expected to start implementation around July 1, 2023.
  - That will likely be the date DWR will provide the award announcement. And costs incurred after the award date will be eligible for grant reimbursement
- Grant agreements will be executed in Fall 2023.
- Projects are required to complete their implementation by December 2027.

### **BACKGROUND**

The suite of projects previously adopted fall into three categories 1) General Implementation, 2) Disadvantaged Community (DAC) Implementation, and 3) North Orange County General Implementation. Per a 2019 agreement with the County of Orange, Orange County Water District, and Orange County Sanitation District, the collective has their own process to select projects (using funding allocated to them through the agreement). The OWOW governance structure's role is to ensure all North Orange County projects are eligible per Proposition 1 IRWM requirements released by the State.

The groups of projects, and their funding amounts are provided in the following pages. The total amount awarded to the thirteen projects is \$27,705,642.

General Implementation:

<b>Project Name</b>	<b>Applicant</b>	<b>Water Supply (AFY)</b>	<b>Water Quality (MGD)</b>	<b>Habitat (Acres)</b>	<b>Flood Protection (Acres)</b>	<b>Grant Award</b>
<b>Santa Ana River Watershed Weather Modification Pilot Project</b>	SAWPA	8,200	4.40	-	-	\$861,400
<b>Etiwanda Intervalley Water Quality and Water Resiliency Phase-1A</b>	JCSD	4,355	4.00	-	-	\$2,954,213
<b>Wellhead Nitrate Treatment for Wells 4 &amp; 27</b>	MVWD	4,516	4.03	-	-	\$2,533,492
<b>Cable Creek Basin (Upper)</b>	SBCFCD	859	-	-	390	\$2,521,678
<b>Lake Elsinore Algae Harvesting and Nutrient Removal Pilot Project</b>	LESJWA	-	1.00	3,000	-	\$1,500,000
<b>Lake Rialto Habitat Management and Community Open Space</b>	Rialto, City	-	5.90	10	-	\$2,149,748
<b>Well 2 Replacement</b>	MVWD	3,226	2.88	-	-	\$2,006,311

DAC Implementation:

<b>Project Name</b>	<b>Applicant</b>	<b>Water Supply (AFY)</b>	<b>Water Quality (MGD)</b>	<b>DAC %</b>	<b>Grant Award</b>
<b>New Washington Well</b>	Santa Ana, City	4,000	3.57	85%	\$3,394,743
<b>Lead Service Line Replacements in the Bloomington DAC</b>	WVWD	3,454	3.10	100%	\$315,000
<b>Box Springs Mutual Water Company Well Improvement</b>	Box Springs Mutual	411	0.37	100%	\$1,885,257



North Orange County General Implementation:

<b>Project Name</b>	<b>Applicant</b>	<b>Water Supply (AFY)</b>	<b>Water Quality (MGD)</b>	<b>Dry Weather Runoff Reduction (AFY)</b>	<b>Grant Award</b>
<b>Orange County Regional PFAS Groundwater Treatment Program</b>	OCWD	2,000	1.79	-	\$4,200,000
<b>Santa Ana Zoo Stormwater Capture and Diversion Project</b>	Santa Ana, City	67	0.06	-	\$2,603,525
<b>Making Conservation an Orange County Way of Life</b>	MWDOC	703	-	208	\$780,275

Attachments:

1. PowerPoint Presentation

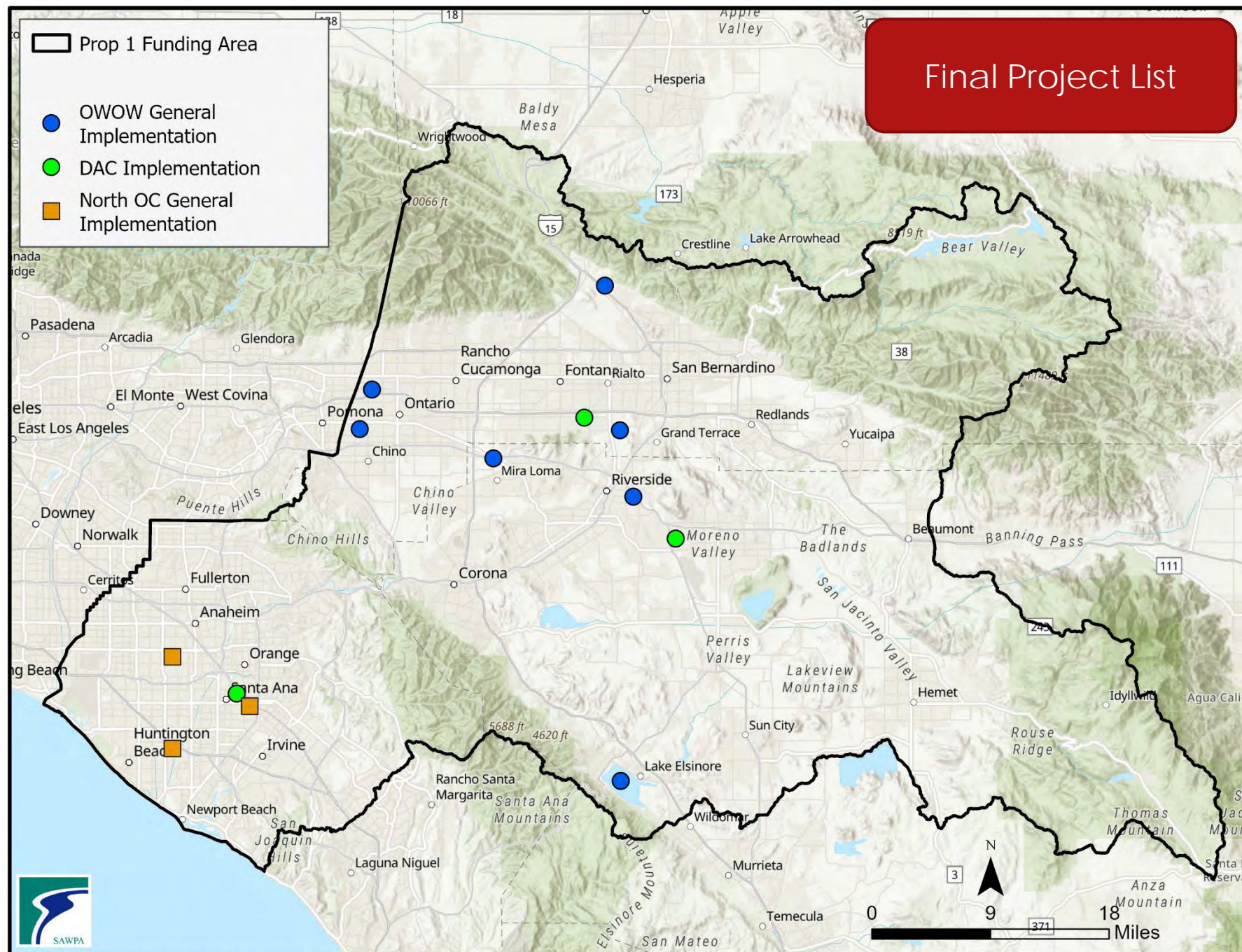
Page Intentionally Blank

# Update on Prop 1 Round 2 IRWM

Ian Achimore, Senior Watershed Manager  
SAWPA Commission | January 26, 2023  
Agenda Item 4.C









# General Implementation Projects

3

Project Name	Applicant	Water Supply (AFY)	Water Quality (MGD)	Habitat (Acres)	Flood Protection (Acres)	Grant Award
Santa Ana River Watershed Weather Modification Pilot Project	SAWPA	8,200	4.40	-	-	\$861,400
Etiwanda Intervalley Water Quality and Water Resiliency Phase-1A	JCSD	4,355	4.00	-	-	\$2,954,213
Wellhead Nitrate Treatment for Wells 4 & 27	MVWD	4,516	4.03	-	-	\$2,533,492
Cable Creek Basin (Upper)	SBCFCD	859	-	-	390	\$2,521,678
Lake Elsinore Algae Harvesting and Nutrient Removal Pilot Project	LESJWA	-	1.00	3,000	-	\$1,500,000
Lake Rialto Habitat Management and Community Open Space	Rialto, City	-	5.90	10	-	\$2,149,748
Well 2 Replacement	MVWD	3,226	2.88	-	-	\$2,006,311



# DAC Implementation Projects

4

Project Name	Applicant	Water Supply (AFY)	Water Quality (MGD)	DAC %	Grant Award
New Washington Well	Santa Ana, City	4,000	3.57	85%	\$3,394,743
Lead Service Line Replacements in the Bloomington DAC	WVWD	3,454	3.10	100%	\$315,000
Box Springs Mutual Water Company Well Improvement	Box Springs Mutual	411	0.37	100%	\$1,885,257

# North Orange County General Implementation Projects

5

Project Name	Applicant	Water Supply (AFY)	Water Quality (MGD)	Dry Weather Runoff Reduction (AFY)	Grant Award
Orange County Regional PFAS Groundwater Treatment Program	OCWD	2,000	1.79	-	\$4,200,000
Santa Ana Zoo Stormwater Capture and Diversion Project	Santa Ana, City	67	0.06	-	\$2,603,525
Making Conservation an Orange County Way of Life	MWDOC	703	-	208	\$780,275

Note: Per a 2019 agreement, the North Orange County IRWM group has their own process to select projects (using funding allocated to them through the agreement) and the OWOW governance structure ensures all North OC projects are eligible per Prop 1 requirements released by the State.



# New Water and Revised Water for the Watershed

- ▶ “New water” - water from a source that was not in use prior,
- ▶ “Revised water” - water from a source that is currently discharged (such as secondary treated water) or water that is currently not in use due to regulatory or water quality issues.
- ▶ Note: The total amount awarded to the thirteen projects is \$27,705,642.

Local Water from Prop 1 Round 2 Projects	Acre Feet per Year
New Water	13,312
Revised Water	18,466
<b>Total Local Water</b>	<b>31,778</b>

# Next Steps for Prop 1 Round 2

7

- ▶ Submit application to Department of Water Resources by February 1, 2023.
- ▶ Projects are all expected to start implementation around July 1, 2023.
  - ▶ That will likely be the date DWR will provide the award announcement. And costs incurred after the award date will be eligible for grant reimbursement
- ▶ Grant agreements will be executed in Fall 2023.
- ▶ Projects are required to complete their implementation by December 2027.





# Questions

8