



Stormwater Treatment Partnerships

Caltrans Challenges

- Mandated by the 2015 Statewide Trash Amendment, 2017 13383 Order, and 2022 Caltrans NPDES Permit to address discharge of trash from identified Significant Trash Generating Areas (STGAs) .
- Narrow right of way
- Expensive or impossible to place BMPs at each outfall



Legend

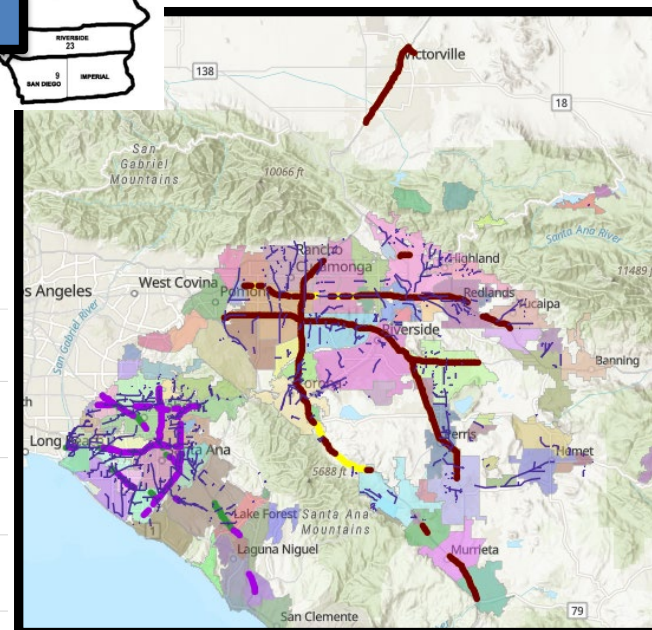
Modified Stormwater Channels

CalTrans 8 ROW Left

CalTrans 8 ROW Right

CalTrans 12 ROW Left

CalTrans 12 ROW Right



Caltrans NPDES Permit

The 2022 Caltrans NPDES Permit will require Caltrans to:

- Meet interim milestones to address STGAs.
- Reduce trash in Significant Trash Generating Areas (STGAs)
- Address all STGAs by December 2, 2030.



Partnership Programs

- ✓ Cooperative Implementation Agreements (CIA)
- ✓ Financial Contribution Only (FCO)

Cooperative Implementation Agreements (CIA)

- Fund available for planning through construction
- Limited amount of funds available each year
- Projects prioritized
- Funding decisions made by June of each year
- Funds available immediately

Financial Contribution Only (FCO)

- Funds capital construction costs
- Caltrans prepares the Project Initiation Document
- Dedicated funds
- Funding decisions made by June of odd years
- Funds typically become available after 2 years



Partnership Programs

For each program:

- Maintenance is responsibility of local agency
- Projects remain eligible if not selected

Questions?





William Pan, P.E.
Acting NPDES Coordinator
William.pan@dot.ca.gov
(916) 956-5518