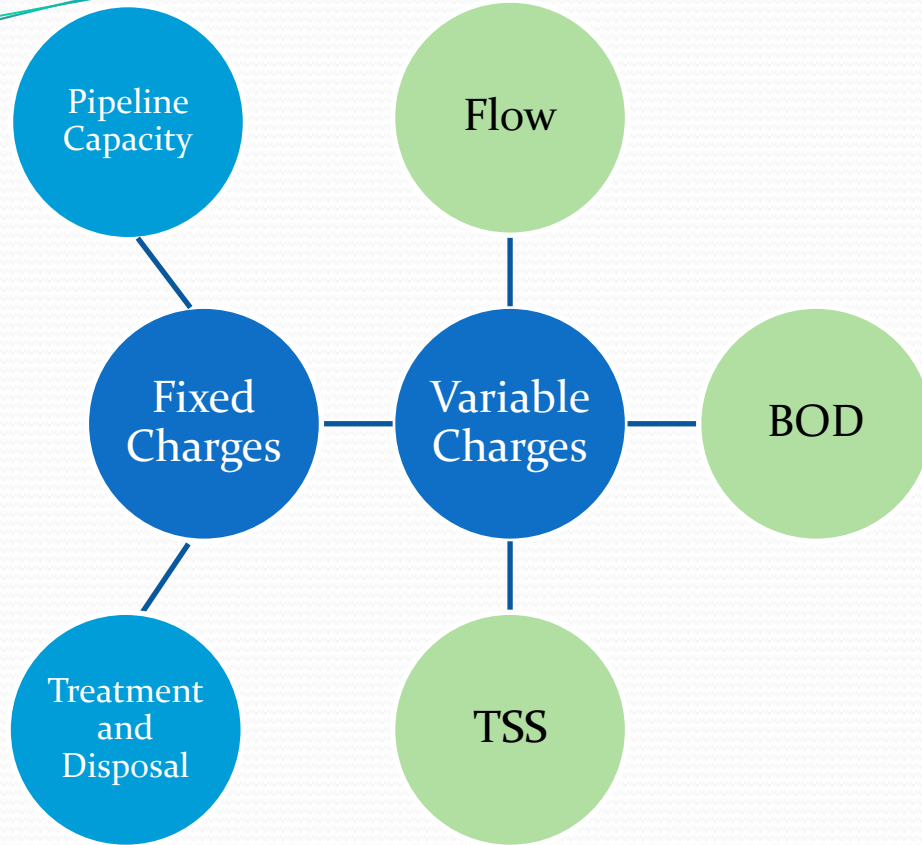


# Inland Empire Brine Line Rate Resolution 2022-9

David Ruhl, Engineering Manager  
Project Agreement 24 Committee  
June 7, 2022 | Item No. 5.A.

# Recommendation

- That the Project Agreement 24 Committee recommend approval by the SAWPA Commission of Resolution No. 2022-9 establishing the Fiscal Year 2022-23 Inland Empire Brine Line Rates.



## Brine Line Rate Components:

- Flow
  - Per Million Gallons
- Biochemical Oxygen Demand (BOD)
  - Per 1,000 lbs
- Total Suspended Solids (TSS)
  - Per 1,000 lbs
- Fixed Charges for Pipeline and Treatment and Disposal Capacity Owned
  - Per Million Gallons/Day

# Brine Line Rates Direct Dischargers (FY22-23)

| Options          | Effective date | Flow MG | BOD(1)<br>1,000 lbs | TSS(1)<br>1,000 lbs | Fixed Pipe | Fixed T&D |
|------------------|----------------|---------|---------------------|---------------------|------------|-----------|
| Current FY21-22  | -              | 1,018   | 329                 | 460                 | 6,654      | 13,505    |
| Proposed FY22-23 | 7/1/2022       | 1,049   | 353                 | 520                 | 6,654      | 13,505    |

- (1) BOD and TSS is a “pass through” cost from OC San. BOD and TSS proposed rate for FY 22-23 match OC San charge received in May 2022.

# Brine Line Rates FY17 – FY24

| Fiscal Year          | Flow (MG)    | BOD (1,000 lbs) | TSS (1,000 lbs) | Monthly Fixed Pipeline | Monthly Fixed Treatment |
|----------------------|--------------|-----------------|-----------------|------------------------|-------------------------|
| 2024 planned         | \$1,101      | \$371           | \$547           | \$6,654                | \$13,505                |
| <b>2023 proposed</b> | <b>1,049</b> | <b>353</b>      | <b>520</b>      | <b>6,654</b>           | <b>13,505</b>           |
| 2022 Current         | 1,018        | 329             | 460             | 6,654                  | 13,505                  |
| 2021 Jan - Jun       | 1,018        | 329             | 460             | 6,654                  | 13,505                  |
| 2021 Jul - Dec       | 979          | 316             | 442             | 6,398                  | 12,985                  |
| 2020                 | 979          | 316             | 442             | 6,398                  | 12,985                  |
| 2019                 | 946          | 307             | 429             | 6,217                  | 12,607                  |
| 2018                 | 901          | 307             | 429             | 5,921                  | 12,007                  |
| 2017                 | 858          | 307             | 429             | 5,639                  | 11,433                  |

# Brine Line Rates % Change (+/-) FY17 – FY24

| Fiscal Year         | Flow MG     | BOD (1,000 lbs) | TSS (1,000 lbs) | Monthly Fixed Pipeline | Monthly Fixed Treatment |
|---------------------|-------------|-----------------|-----------------|------------------------|-------------------------|
| 2024 Proposed       | 5.0%        | 5.2%            | 5.2%            | 0%                     | 0%                      |
| <b>2023 Planned</b> | <b>3.0%</b> | <b>7.3%</b>     | <b>13.0%</b>    | <b>0%</b>              | <b>0%</b>               |
| 2022 Current        | 0%          | 0%              | 0%              | 0%                     | 0%                      |
| 2021 Jan-Jun        | 4%          | 4%              | 4%              | 4%                     | 4%                      |
| 2021 Jul-Dec        | 0%          | 0%              | 5%              | 0%                     | 0%                      |
| 2020                | 3%          | 3%              | -2%             | 3%                     | 3%                      |
| 2019                | 5%          | 0%              | 0%              | 5%                     | 5%                      |
| 2018                | 5%          | 0%              | 0%              | 5%                     | 5%                      |
| 2017                | 5%          | 2%              | 2%              | 5%                     | 5%                      |

# Indirect Dischargers

- Currently using a 2-tier system:
  - Brine (  $< 100$  mg/L of both BOD or TSS)
  - Non-Brine (  $\geq 100$  mg/L of either BOD or TSS)
  - Charges based on a per gallon base for brine tier and a per gallon base plus pounds of BOD and pounds of TSS for non-brine tier.

# Indirect Discharger Rates

| Option             | Brine <sup>(a)</sup> Tier<br>( $< 100$ mg/L) / gallon | Non-Brine <sup>(b)</sup> Tier*<br>( $\geq 100$ mg/L) / gallon | BOD/lb | TSS/lb  |
|--------------------|---|---|--------|---------|
| Current (FY21-22)  | \$0.016   | \$0.016   | \$0.78 | \$0.745 |
| Proposed (FY22-23) | \$0.016   | \$0.016   | \$0.78 | \$0.745 |

*\*Non-brine tier charges the flow component plus any pounds of BOD and TSS.*

*(a) Brine Tier if both BOD and TSS concentrations are less than 100 mg/L*

*(b) Non-Brine Tier if any of the BOD or TSS concentrations are 100 mg/L or greater.*



# Capacity Pool Lease Rates

| Option                                  | Flow<br>(per gallon) | Additional<br>BOD (per lb) | Additional<br>TSS (per lb) |
|---|----------------------|----------------------------|----------------------------|
| Current (FY21-22)<br>[250 mg/L BOD/TSS] | \$0.00263            | \$0.4080                   | \$0.2501                   |
| Proposed (FY22-23)                      | \$0.00263            | \$0.4080                   | \$0.2501                   |
| Treatment and Disposal<br>Only          | \$0.00117            | \$0.4080                   | \$0.2501                   |

# Treatment & Disposal Surcharge Rates

| Option             | Flow<br>(per gallon) | BOD (per lb) | TSS (per lb) |
|--------------------|----------------------|--------------|--------------|
| Current (FY21-22)  | \$0.0021             | \$0.4080     | \$0.2501     |
| Proposed (FY22-23) | \$0.0021             | \$0.4080     | \$0.2501     |

These rates apply to dischargers that exceed their contractually owned capacity in any given month.

# Proposed Permit Fees

| Type of Permit           | FY21-22 Fee | Proposed FY22-23 Fee |
|--------------------------|-------------|----------------------|
| Direct Discharger        | \$600       | \$600                |
| Indirect Discharger      | \$300       | \$300                |
| Connection Authorization | \$1,100     | \$1,100              |
| Liquid Waste Hauler      | \$250       | \$250                |

# Recommendation

- That the Project Agreement 24 Committee recommend approval by the SAWPA Commission of Resolution No. 2022-9 establishing the Fiscal Year 2022-23 Inland Empire Brine Line Rates.



Questions??



# Inland Empire Brine Line Pipeline Cleaning Services

David Ruhl, Engineering Manager  
Project Agreement 24 Committee  
June 7, 2022 | Item No. 5.B.

# Brine Line Pipeline Cleaning Services

## Recommendation:

- That the PA 24 Committee authorize the GM to issue Task Order INN240-05 to Innerline Engineering, Inc. for Brine Line pipeline cleaning services for a period of two years of an amount not-to-exceed \$264,880.

# Pipeline Cleaning Services

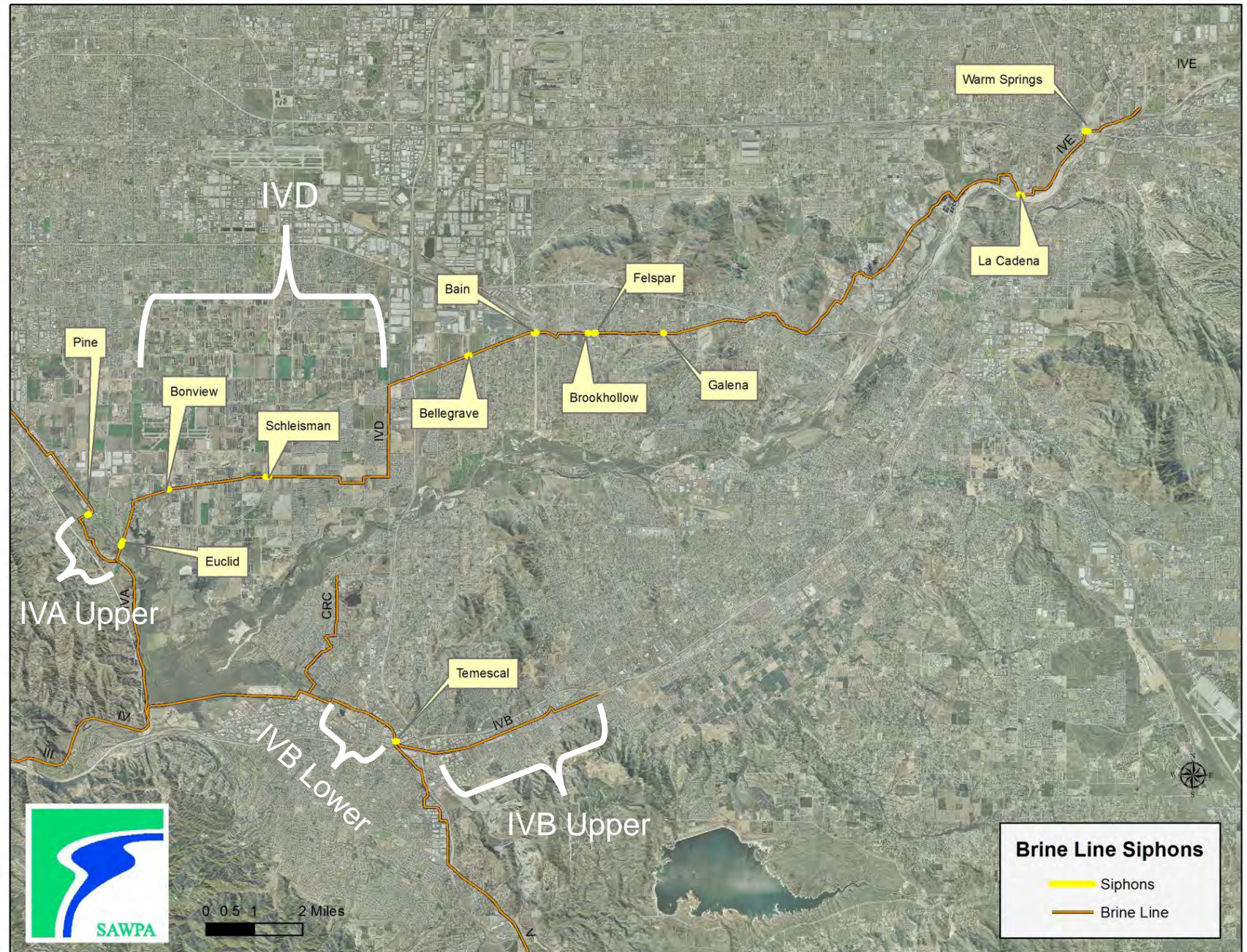
- RFP Issued in April 2022
- Pre-proposal meeting on April 21, 2022
- 4 proposal received on May 10, 2022

| <b>Service Provider</b> | <b>Line Cleaning</b> | <b>Traffic Control</b> | <b>Total</b> |
|-------------------------|----------------------|------------------------|--------------|
| Downstream Services     | \$326,648            | \$128,279              | \$454,927    |
| Houston & Harris        | \$304,958            | \$30,236               | \$335,194    |
| Innerline Engineering   | \$222,320            | \$42,560               | \$264,880    |
| Pro-Pipe                | \$331,400            | \$49,730               | \$381,130    |



# Pipeline cleaning services

- On-call services paid on hourly basis
  - Vacuum trucks, water trucks, and traffic control
- Siphons and Various locations on Reach IVA, IVB and IVD
- Two – year contract



# Pipeline Cleaning – Proposal Review

| Service Provider             | Cost Score (60%) | Qualifications Score (a) (40%) | Total Score (b) |
|------------------------------|------------------|--------------------------------|-----------------|
| Downstream Services          | 42               | 35                             | 77              |
| Houston & Harris             | 51               | 36                             | 87              |
| <b>Innerline Engineering</b> | <b>57</b>        | <b>36</b>                      | <b>93</b>       |
| Pro-Pipe                     | 45               | 28                             | 73              |

(a) Includes qualification of staff, experience, work plan and completeness of proposal.

(b) The cumulative total possible score is 100 points, based on a total possible 60 points for Cost and 40 points for Qualifications.

# Brine Line Pipeline Cleaning Services

## Recommendation:

- That the PA 24 Committee authorize the GM to issue a Task Order INN240-05 to Innerline Engineering, Inc. for Brine Line pipeline cleaning services for a period of two years of an amount not-to-exceed \$264,880.

**Questions?**



# Inland Empire Brine Line Master Plan

David Ruhl, Engineering Manager  
Project Agreement 24 Committee  
June 7, 2022 | Item No. 5.C.

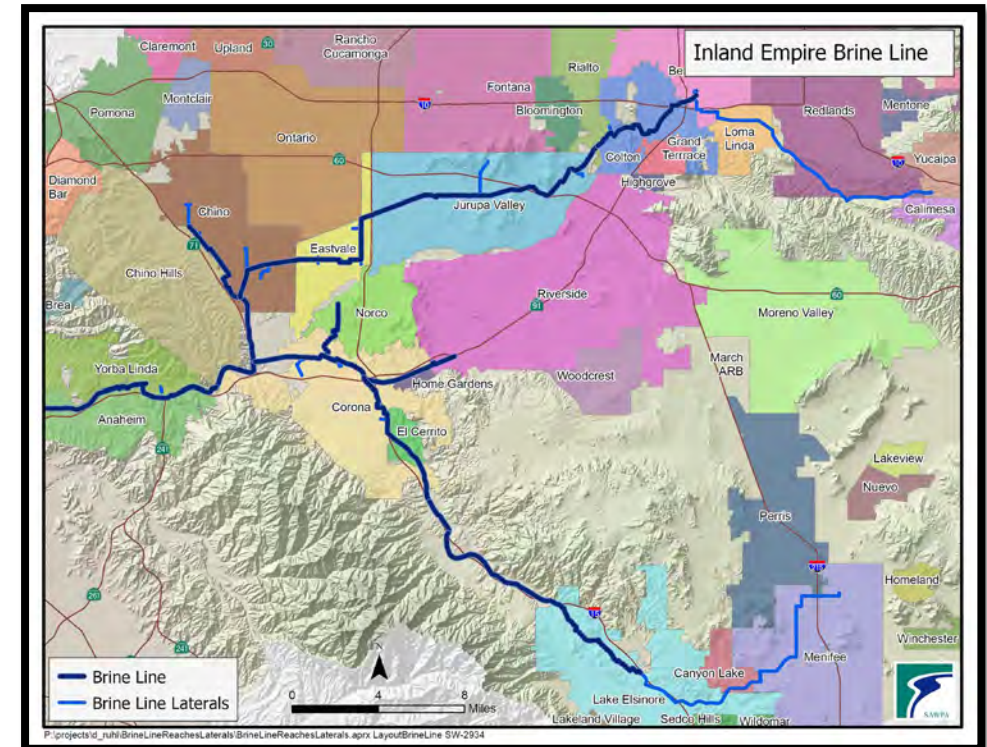
# Brine Line Master Plan

## Recommendation:

- Review the Inland Empire Brine Line Master Plan scope of work and direct staff to prepare a Request for Proposals for the preparation of the Inland Empire Brine Line Master Plan.

# Brine Line Master Plan

- Long-term planning document that addresses facility needs
- Purpose is to determine how to manage and implement the growth and expansion of the Brine Line to best serve the watershed and our Member Agencies
- Benefits
  - Consistency in decision making
  - Ability to make informed decisions
  - Focus resources and prioritize projects
  - Promote economic development
  - Maintain System Reliability
  - Accommodate future growth
  - Meet future regulatory requirements



# Brine Line Master Plan – Scope of Work

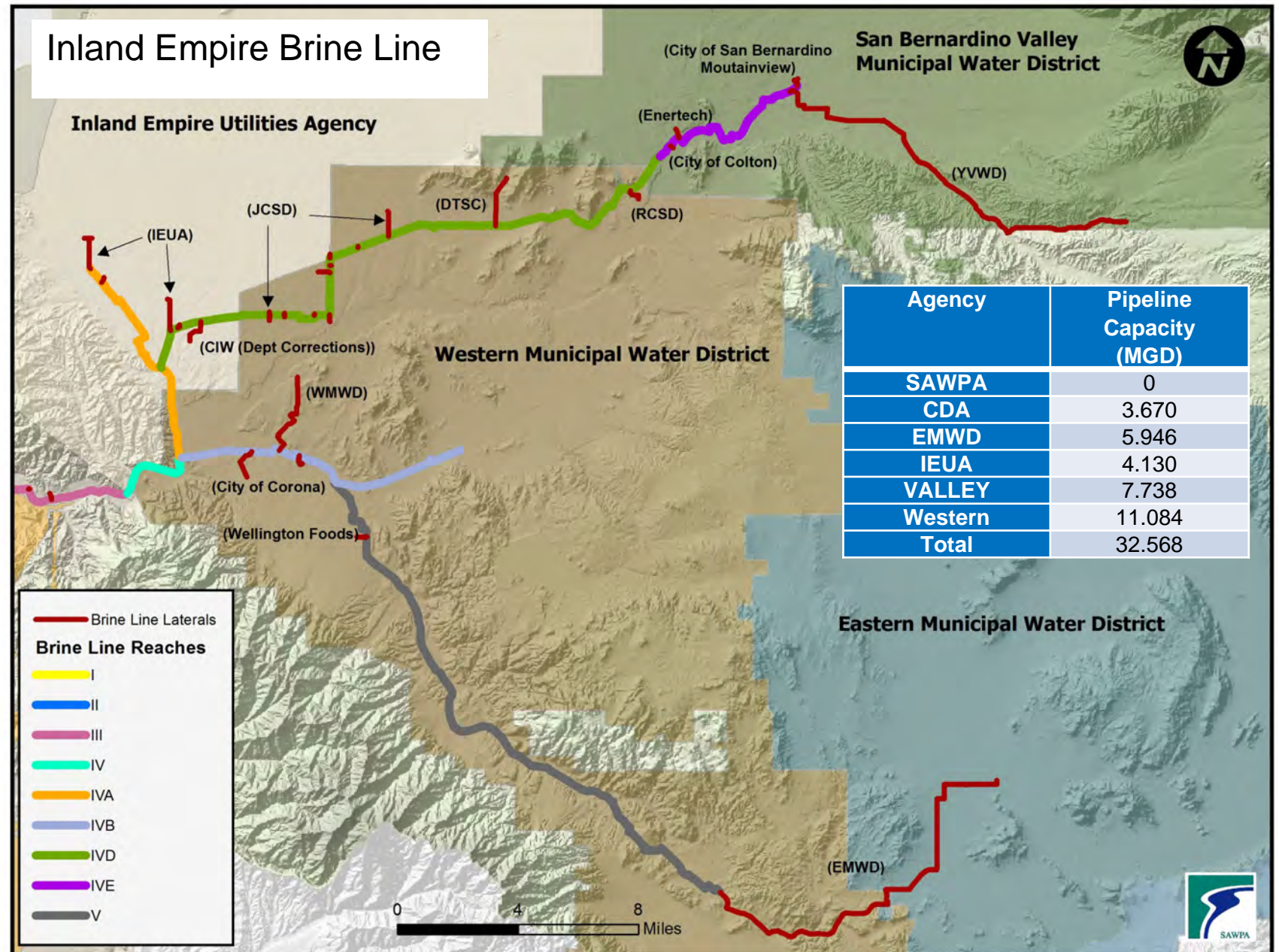
- Coordination with Member Agencies, City and County planning/development Departments
  - Review relevant documents existing plans
- Brine Line System Analysis
  - Update and calibrate existing hydraulic model
- Existing Brine Line System Evaluation
  - Evaluate existing system conditions
  - Determine critical infrastructure
  - Evaluate potential system improvements to sustain temporary outages of the Brine Line





# Scope of Work – cont.

- Future Brine Line System Evaluation
  - Ultimate capacity
  - Resiliency
  - Member Agency pipeline capacity
  - Growth areas



# Scope of Work – cont.

## Market Analysis and Future Growth Projections

- Identify new customer opportunities
  - Existing customers
  - County and City Planning/Development Departments
  - Land use analysis
  - Publicly owned treatment works
  - Commercial realtors
- Identify future growth areas



Industries that dispose of salty wastewater:

- Biotech Manufacturing
- Electronic Parts Manufacturers
- Medical Supply Manufacturing
- Computer Chip Manufacturers
- Commercial Laundries
- Food and Beverage Processing
- Groundwater Desalters
- Ion Exchange Plants
- Power Plants
- Water Reclamation Facilities

# Scope of Work – cont.

- Brine Line future facilities, improvements and growth areas
  - System improvement for growth
  - Capacity deficiencies
  - Resiliency
  - Potential growth areas
  - Planning level cost estimates
  - Develop criteria to evaluate further, add to CIP



# Scope of Work – Cont.

- Capacity management (30 MGD System), and long-term planning efforts
  - Investigate potential system enhancements to manage capacity (30 MGD)
    - Brine Storage
    - Brine concentration facilities (centralized/regional)
    - Mainline flow recorders / SCADA
  - Investigate treatment opportunities
    - PFAS?, BOD/TSS?
- Multi-use benefits for the future
  - Identify and evaluate potential multi-use benefits
    - In-line hydroelectric system as source of renewable energy

# Scope of Work – cont.

- Policy Considerations
  - Lateral ownership
  - Capacity buy-back
  - How to pay for laterals, projects, and system expansion
- Draft and Final Master Plan



# Schedule

## RFP Process

- PA 24 Committee consider directing staff to prepare RFP  
June 7, 2022
- Incorporate PA 24 feedback and comments  
June 2022
- PA 24 Committee direct staff to issue RFP  
July / August 2022
- Receive proposals / conduct interviews  
October 2022
- Select consultant and recommend award to PA 24 Committee  
November 2022

# Brine Line Master Plan

## Recommendation:

- Review the Inland Empire Brine Line Master Plan scope of work and direct staff to prepare a Request for Proposals for the preparation of the Inland Empire Brine Line Master Plan.

**Questions?**