



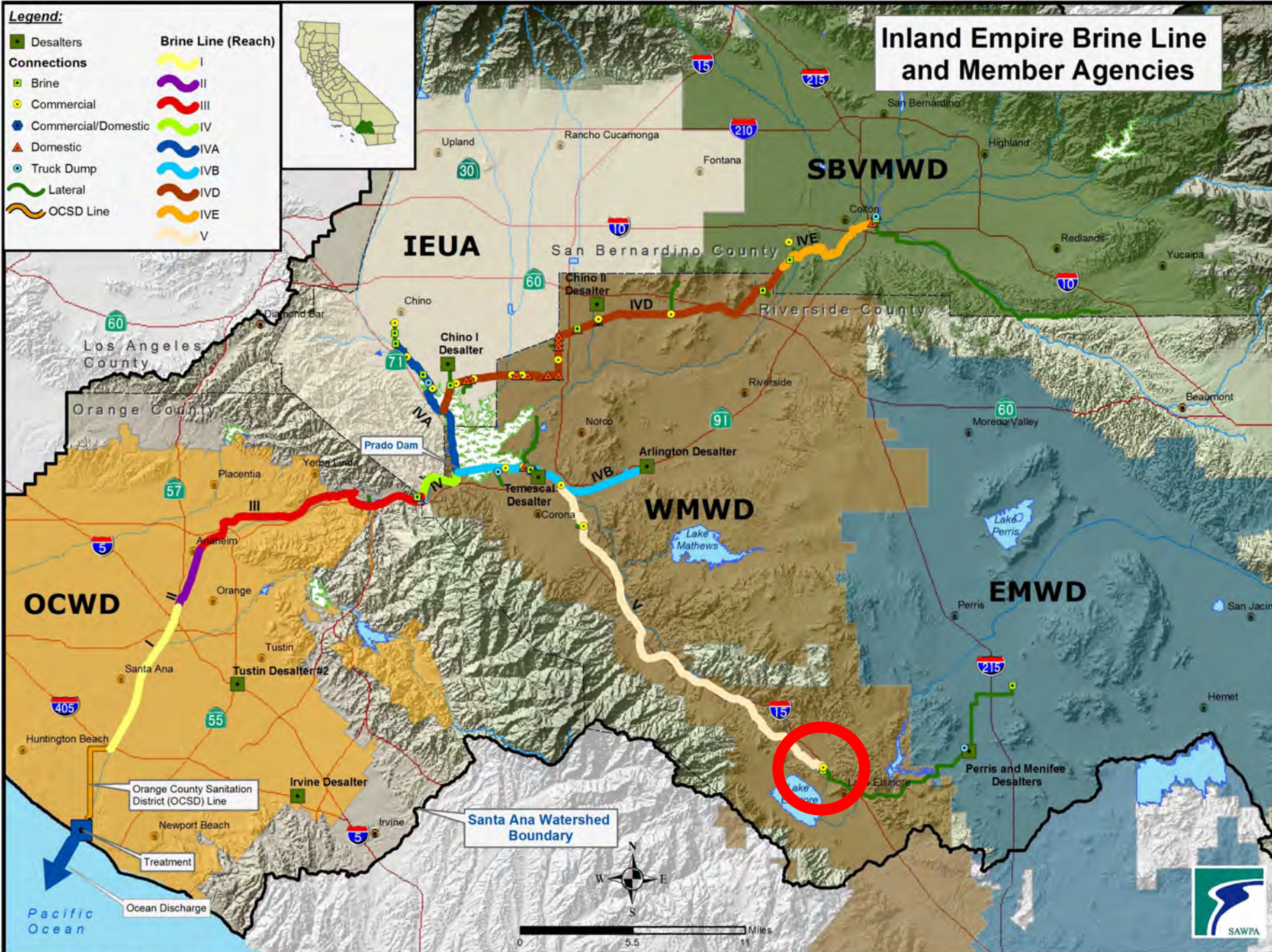
Inland Empire Brine Line Reach V Pipeline Failure – Pasadena Street near 3rd Street Channel

David Ruhl, Engineering Manager
Project Agreement 24 Committee
February 1, 2022| Item No. 5.A.

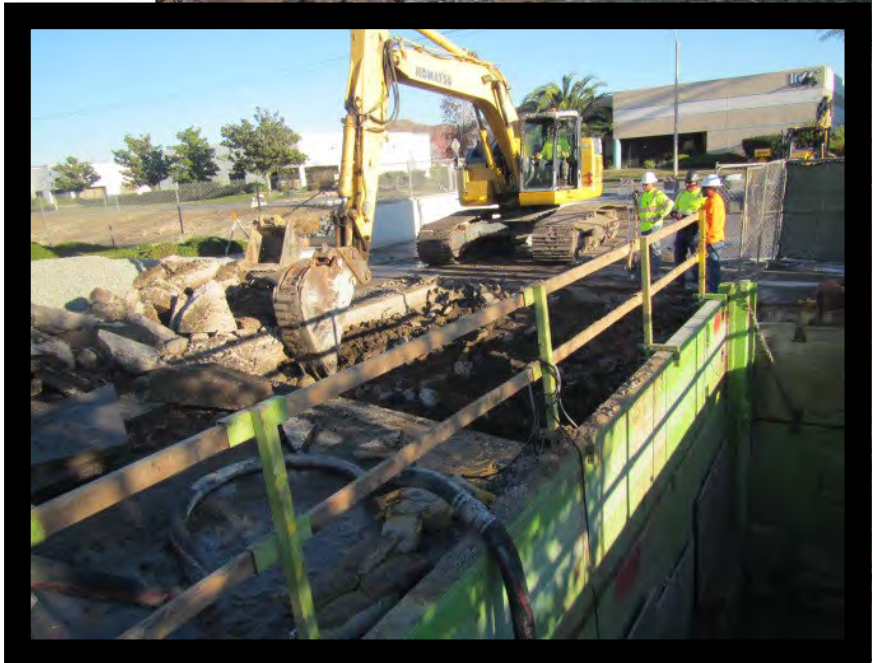
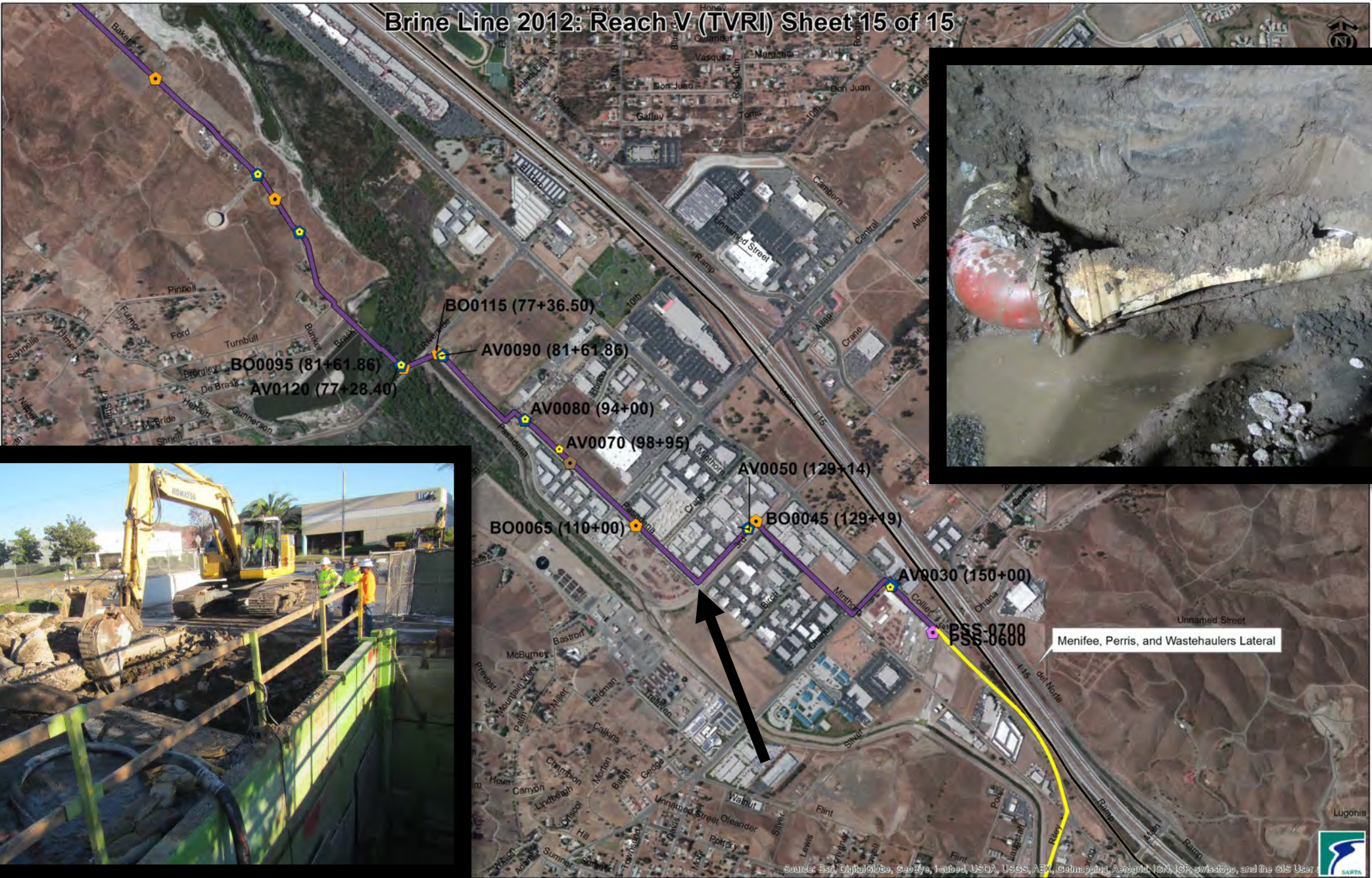
Brine Line Reach V Pipeline Failure

Recommendation: That the PA 24 Committee:

1. Receive and file this Status Report.
2. Retroactively authorize the GM to issue task/work orders to contractors and consultants for an amount to be determined, to contain the spill and make repairs due to the damage caused by the Sanitary Sewer Overflow (SSO) (retroactive to December 18, 2021).
3. Retroactively direct staff to pay all expenses from the Brine Line Self-Insurance Fund, to file a claim with SAWPA's insurance carriers, and to deposit any insurance payments received into the Self-Insurance Fund.



Brine Line 2012: Reach V (TVRI) Sheet 15 of 15



12-18-21 Pasadena St and 3rd St Spill

Legend



Spill Point



● Sampling Locations

Impacts

- ~296,000 gallons spilled from the line
 - ~88,000 gallons recovered
 - ~208,000 gallons entered 3rd Street Channel and Temescal Wash
- ~245,000 gallons drain from the line
- Biological assessment on impacts to 3rd Street Channel and Temescal Channel



Resources

Contractors and Consultants Obtained to Assist:	Authorized	Expended
• Weka Inc. (Excavate pipe, materials and equipment and pipe repair)	\$136,000	\$135,915
• Haz-Mat Trans (tanker trucks for brine removal)	\$37,022	\$37,022
• Houston & Harris (Vactor truck for wash down and collecting brine)	\$20,000	\$15,018
• Dudek (Engineering analysis and technical review)	\$5,000	\$0
• Jennings Environmental (Environmental damage assessment)	\$3,875	\$0
Total	\$201,897	\$187,955

Brine Line Reach V Pipeline Failure

Recommendation: That the PA 24 Committee:

1. Receive and file this Status Report.
2. Retroactively authorize the GM to issue task/work orders to contractors and consultants for an amount to be determined, to contain the spill and make repairs due to the damage caused by the Sanitary Sewer Overflow (SSO) (retroactive to December 18, 2021).
3. Retroactively direct staff to pay all expenses from the Brine Line Self-Insurance Fund, to file a claim with SAWPA's insurance carriers, and to deposit any insurance payments received into the Self-Insurance Fund.

Questions?



Inland Empire Brine Line Prado Reservoir – Brine Line MAS Protection

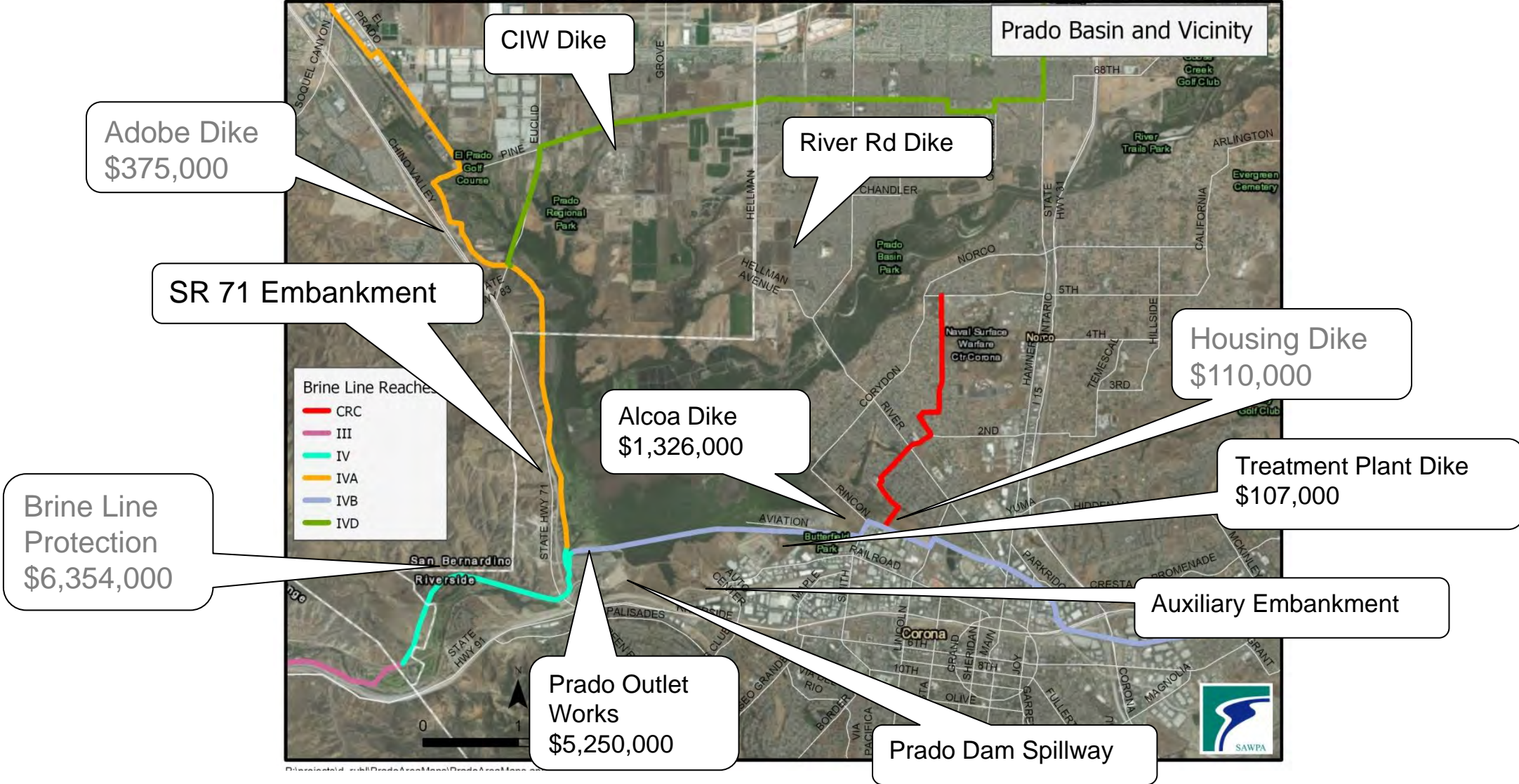
David Ruhl, Engineering Manager
Project Agreement 24 Committee
February 1, 2022 | Item No. 5.B

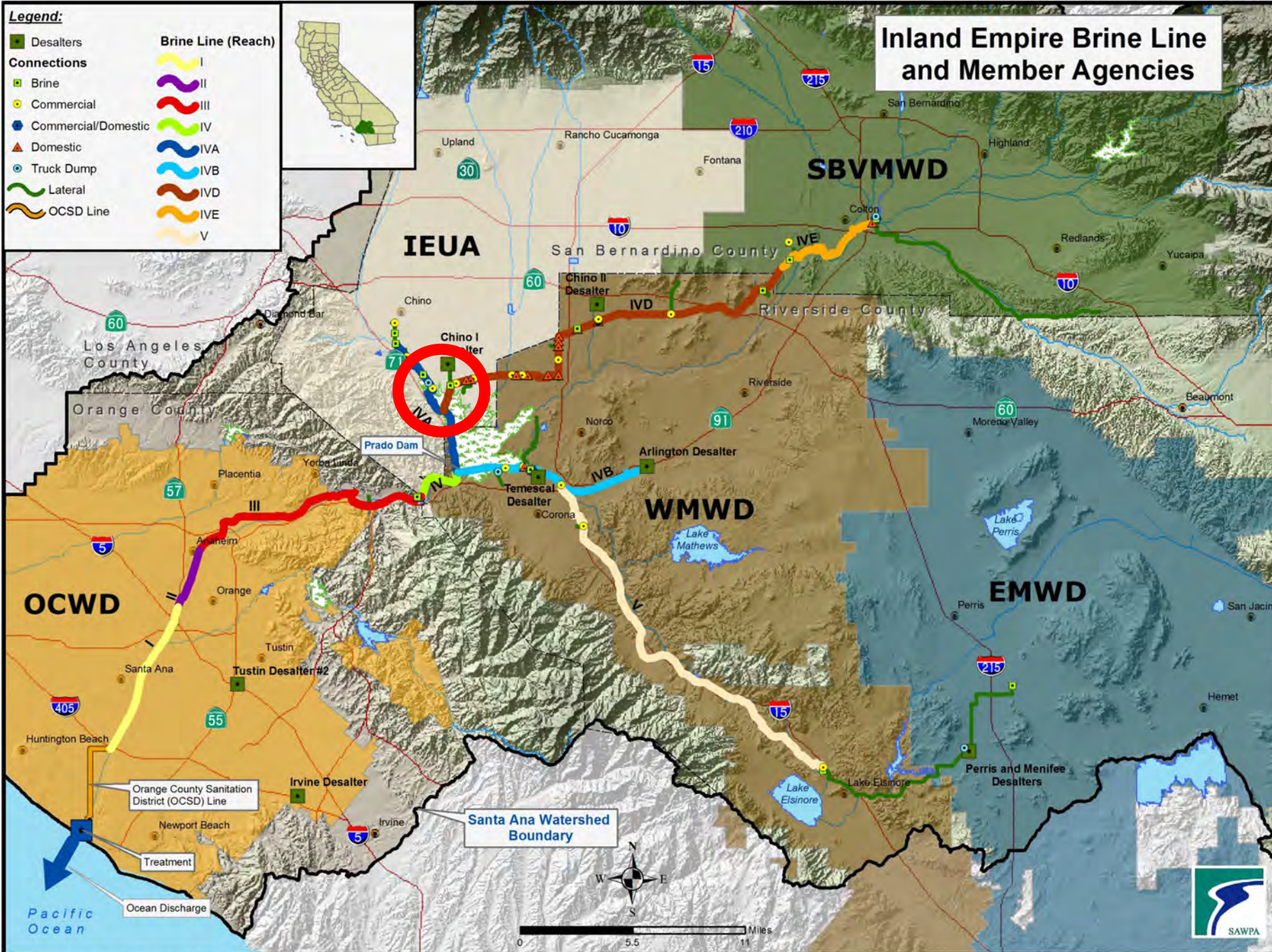
Brine Line MAS Protection

Recommendation:

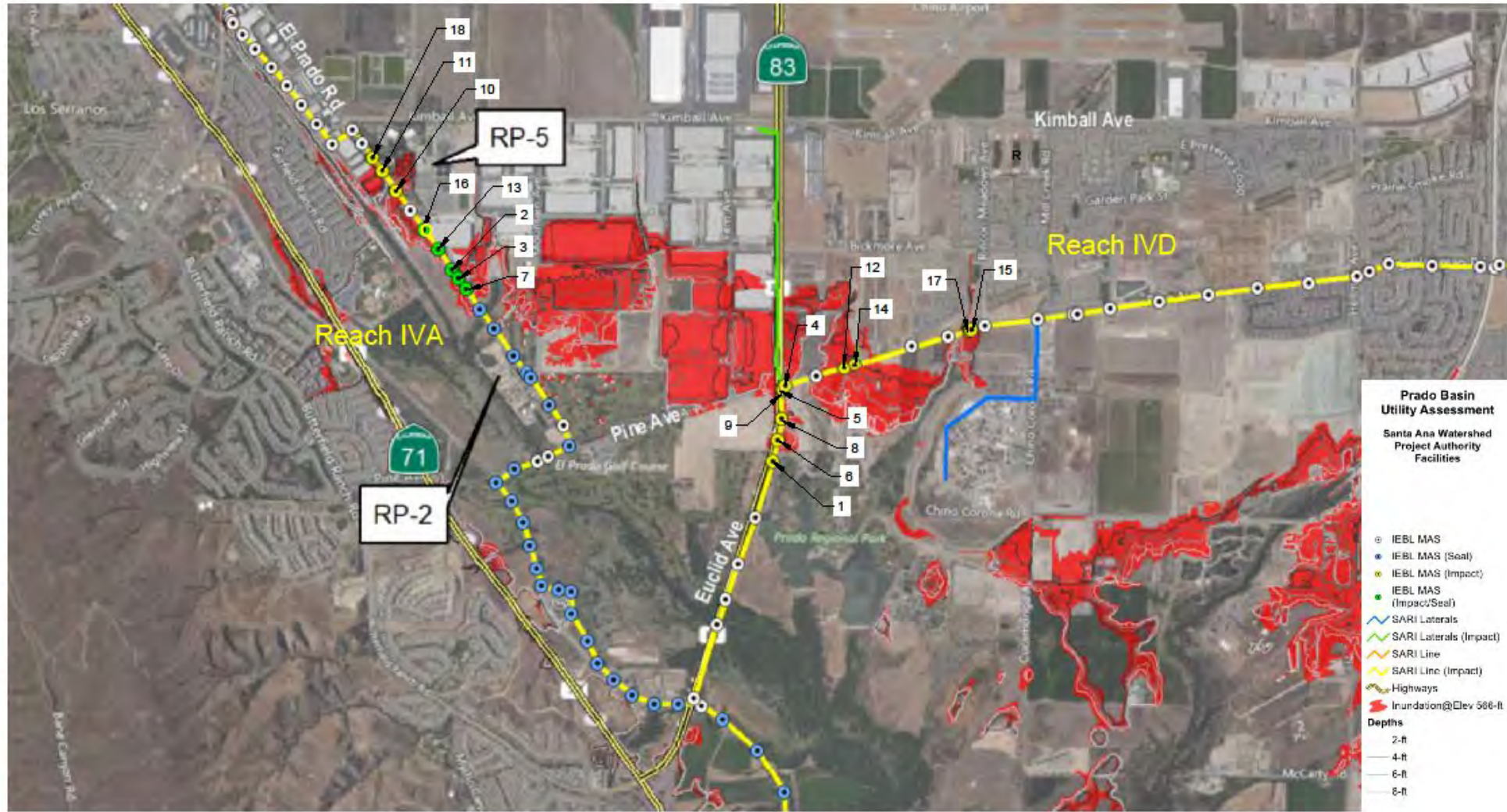
- That the PA 24 Committee receive and file this status report on the Prado Reservoir MAS Protection.

Prado Basin Perimeter Dikes

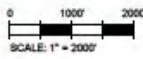




9/17/2020 9:10:52 AM - C:\USERS\BLAS.SEBHATU\DESKTOP\PRADO\SCHEMATIC\REVIEWS\FIGURES\DWG-SEBHATU.BLAS



The yellow and green maintenance access structures (MAS) are located between elevation 556 feet and 566 feet. The green MAS are sealed and the yellow MAS are not sealed.



TETRA TECH
 www.tetra-tech.com
 17885 VON KARMAN AVENUE, SUITE 520
 IRVINE, CA 92614
 (949) 808-5000

ORANGE COUNTY PUBLIC WORKS
 PRADO DAM UTILITY RELOCATIONS PHASE I

**SAWPA INUNDATED
 MAINTENANCE ACCESS STRUCTURES (MAP)**

Project No.: 200-01267-0000
 Date: 08/17/2020
 Designed By: CPD

PIECE 1

Bar Measures 1 Inch

Copyright Tetra Tech

MAS Protection

- Modify 14 MAS to be watertight
- Work includes
 - New watertight frame and cover (all)
 - Lining of structure (4 locations)
- Complete in March 2022
- \$235,000 (Reimbursable by OCPW)
- Current Activities
 - Order long lead items (Frame and Cover)
 - Hired Traffic Control Engineering Firm to prepare TC Plans
 - Working with City of Chino and Caltrans for permit

Questions?