


Proposition 1 Status Update

Steering Committee Meeting | July 28, 2022

Marie Jauregui, Project Manager

Item No. 4.A.





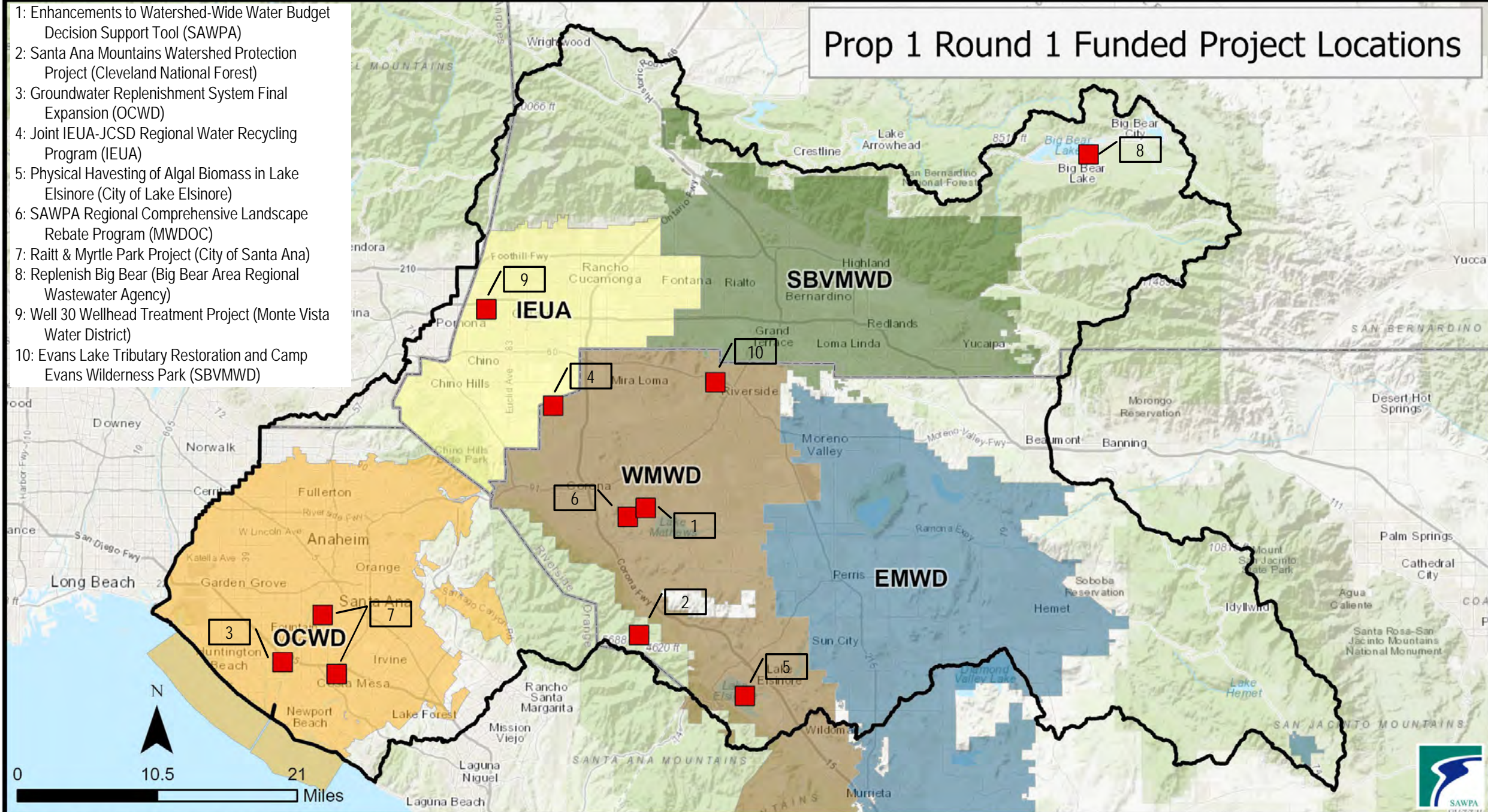
Proposition 1

Round 1 Projects

(January 2015 – December 2025)

Prop 1 Round 1 Funded Project Locations

- 1: Enhancements to Watershed-Wide Water Budget Decision Support Tool (SAWPA)
- 2: Santa Ana Mountains Watershed Protection Project (Cleveland National Forest)
- 3: Groundwater Replenishment System Final Expansion (OCWD)
- 4: Joint IEUA-JCSD Regional Water Recycling Program (IEUA)
- 5: Physical Harvesting of Algal Biomass in Lake Elsinore (City of Lake Elsinore)
- 6: SAWPA Regional Comprehensive Landscape Rebate Program (MWDOC)
- 7: Raitt & Myrtle Park Project (City of Santa Ana)
- 8: Replenish Big Bear (Big Bear Area Regional Wastewater Agency)
- 9: Well 30 Wellhead Treatment Project (Monte Vista Water District)
- 10: Evans Lake Tributary Restoration and Camp Evans Wilderness Park (SBVMWD)



Proposition 1 Round 1 Update

Project Name	Project Description	Water Supply Reliability	Groundwater Recharge	Treat / Convey Wastewater	Multipurpose Flood & Stormwater	Ecosystem / Wetland Protection / Restoration	DAC	Benefits Large Area of Watershed	Drinking Water Treatment	Public Education Component	Non-point Source Pollution	Fisheries Restoration / Protection	Removal of Invasive Non-Native Species
Enhancements to Watershed-Wide Water Budget Decision Support Tool	The project (decision support tool) will create water budgets based on efficiency at the customer and retail water agency scale through the collection of aerial imagery, weather data, and other information.	x						x		x			
Santa Ana Mountains Watershed Protection Project	The project will establish approximately 650 acres of strategically located topographic and roadside fuel breaks on National Forest System lands along North Main Divide Road and the Trabuco Community Defense within the Santa Ana Mountains and watershed.				x	x	x	x				x	

Proposition 1 Round 1 Update

Project Name	Project Description	Water Supply Reliability	Groundwater Recharge	Treat / Convey Wastewater	Multipurpose Flood & Stormwater	Ecosystem / Wetland Protection / Restoration	DAC	Benefits Large Area of Watershed	Drinking Water Treatment	Public Education Component	Non-point Source Pollution	Fisheries Restoration / Protection	Removal of Invasive Non-Native Species
Joint IEUA-JCSD Regional Water Recycling Program	This project is a collaborative effort between the Inland Empire Utilities Agency and the Jurupa Community Services District to increase recycled water use and groundwater recharge in the Chino Basin.	x	x	x				x					
Physical Harvesting of Algal Biomass in Lake Elsinore – Pilot Study	This decision support tool is designed to determine the feasibility of improving water quality in Lake Elsinore through physical removal of algal biomass. The feasibility and cost-effectiveness of potential removal strategies will be evaluated.			x		x	x	x		x	x	x	

Proposition 1 Round 1 Update

Project Name	Project Description	Water Supply Reliability	Groundwater Recharge	Treat / Convey Wastewater	Multipurpose Flood & Stormwater	Ecosystem / Wetland Protection / Restoration	DAC	Benefits Large Area of Watershed	Drinking Water Treatment	Public Education Component	Non-point Source Pollution	Fisheries Restoration / Protection	Removal of Invasive Non-Native Species
Regional Comprehensive Landscape Rebate Program	This Project targets public agency, residential, commercial, industrial, and institutional landscapes throughout the entire Santa Ana River Watershed.	x			x		x	x		x	x		
Raitt & Myrtle Park ¹	This project features the construction of a 1,600-square-foot bioretention basin with no underdrain and a large subsurface infiltration gallery in a new 1.18-acre park.	x	x		x	x	x			x	x		

Proposition 1 Round 1 Update

Project Name	Project Description	Water Supply Reliability	Groundwater Recharge	Treat / Convey Wastewater	Multipurpose Flood & Stormwater	Ecosystem / Wetland Protection / Restoration	DAC	Benefits Large Area of Watershed	Drinking Water Treatment	Public Education Component	Non-point Source Pollution	Fisheries Restoration / Protection	Removal of Invasive Non-Native Species
Replenish Big Bear	The project will add approximately 1,870 AFY of water to Stanfield Marsh Wildlife and Waterfowl Preserve, providing a consistent water source to sustain habitat and increase educational opportunities for the community and visitors.	x	x	x	x	x	x	x		x			
Well 30 Wellhead Treatment Project	The Project involves constructing an ion exchange and a granular activated carbon wellhead treatment system to remove nitrates, perchlorate, and 1,2,3-trichloropropane present in the groundwater supply.	x	x				x	x	x				

Proposition 1 Round 1 Update

Project Name	Project Description	Water Supply Reliability	Groundwater Recharge	Treat / Convey Wastewater	Multipurpose Flood & Stormwater	Ecosystem / Wetland Protection / Restoration	DAC	Benefits Large Area of Watershed	Drinking Water Treatment	Public Education Component	Non-point Source Pollution	Fisheries Restoration / Protection	Removal of Invasive Non-Native Species
Evans Lake Tributary Restoration and Camp Evans Wilderness Park	<p>The project includes:</p> <ul style="list-style-type: none"> • Planning and installation of native habitat on a degraded open space site in the City of Riverside • Restoration of Evans Creek, which is a distributary of Evans Lake to the Santa Ana River. • An educational interpretive trail that travels through the restoration area. 			x		x	x	x		x		x	x

Proposition 1 Round 1 Update

Project Name	Agency	Grant Amount	Required Funding Match	Additional Cost Share	Total Project Cost	% Grant Billed
Enhancements to Watershed-Wide Water Budget Decision Support Tool	SAWPA	\$ 500,000	\$ 864,354	\$ 364,354	\$ 1,728,708	20%
Santa Ana Mountains Watershed Protection Project	Cleveland National Forest	\$ 497,998	\$ 0	\$ 732,144	\$ 1,230,142	0%
Groundwater Replenishment System Final Expansion	OCWD	\$ 3,589,553	\$ 10,000,000	\$ 2,694,545	\$ 16,284,098	100%

Proposition 1 Round 1 Update

Project Name	Agency	Grant Amount	Required Funding Match	Additional Cost Share	Total Project Cost	% Grant Billed
Joint IEUA-JCSD Regional Water Recycling Program	IEUA	\$ 2,617,970	\$ 16,555,000	\$ 13,937,030	\$ 33,110,000	0%
Physical Harvesting of Algal Biomass in Lake Elsinore – Pilot Program	City of Lake Elsinore	\$ 297,000	\$ 0	\$ 0	\$ 297,000	0%
Regional Comprehensive Landscape Rebate Program	MWDOC	\$ 2,767,344	\$ 2,787,218	\$ 0	\$ 5,554,562	53%
Raitt & Myrtle Park ¹	City of Santa Ana	\$ 1,670,000	\$ 0	\$ 246,500	\$ 1,916,500	1%

¹ This project will be added via Amendment; Permitting is expected to be complete in early 2021

Proposition 1 Round 1 Update

Project Name	Agency	Grant Amount	Required Funding Match	Additional Cost Share	Total Project Cost	% Grant Billed
Replenish Big Bear ²	BBARWA	\$ 4,563,338	\$ 0	\$ 36,853,662	\$ 41,417,000	10%
Well 30 Wellhead Treatment	MVWD	\$ 3,431,225	\$ 9,980,024	\$ 3,400,000	\$ 16,811,249	5%
Evans Lake Tributary Restoration and Camp Evans Wilderness Park ³	SBVMWD	\$ 2,000,000	\$ 3,017,736	\$ 1,017,735	\$ 6,035,471	0%

² DAC project; received a waiver for required funding match

³ This project will be added via Amendment; when CEQA is completed



Project Withdrawal Request: Evans Lake Tributary Restoration and Camp Evans Wilderness Park Project

San Bernardino Valley Municipal Water District

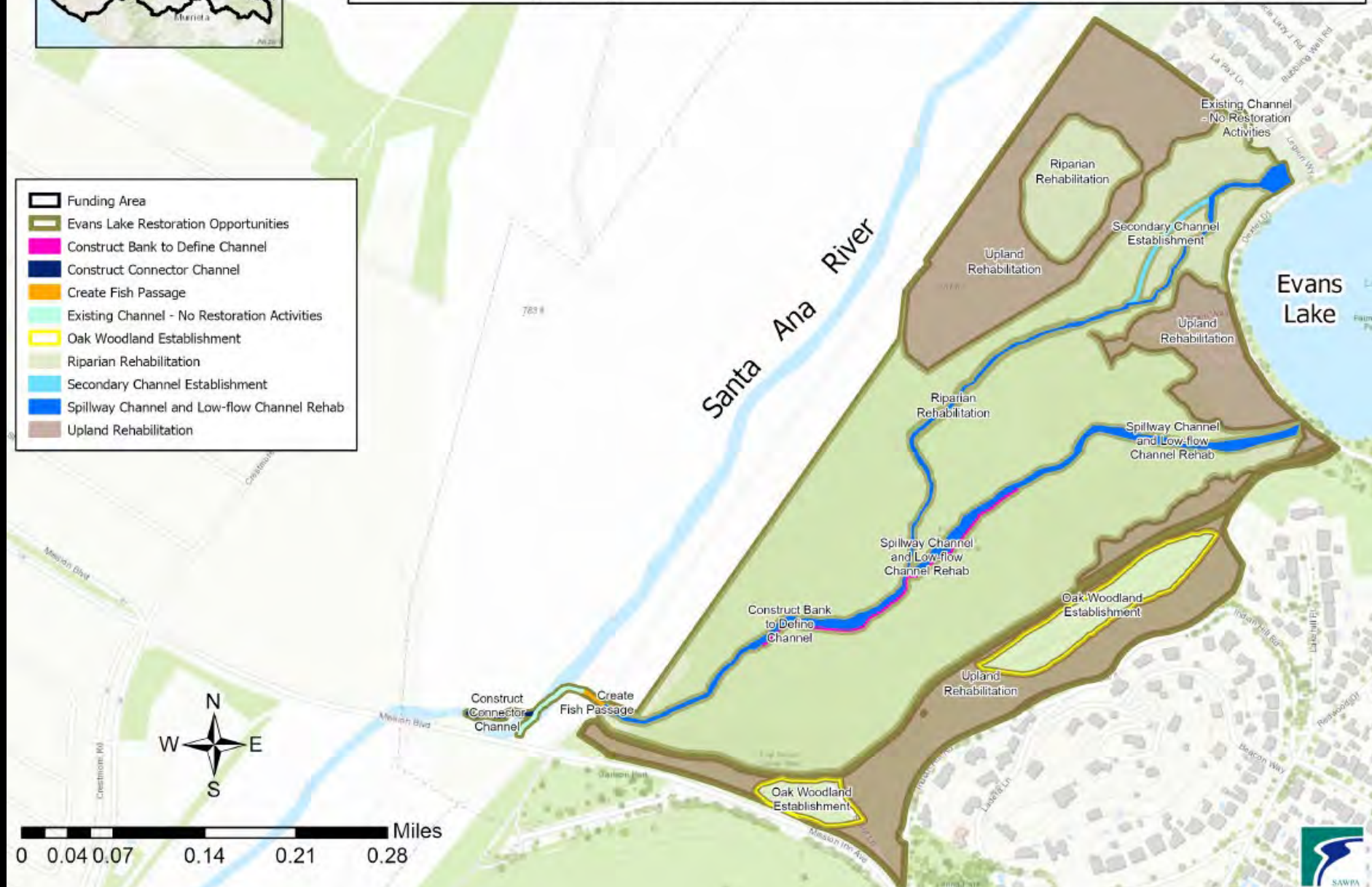
Total Project Cost: \$6 Million

Evans Lake Tributary Restoration and Camp Evans Wilderness Park Project

Local Project Sponsor: San Bernardino Valley Municipal Water District



- Funding Area
- Evans Lake Restoration Opportunities
- Construct Bank to Define Channel
- Construct Connector Channel
- Create Fish Passage
- Existing Channel - No Restoration Activities
- Oak Woodland Establishment
- Riparian Rehabilitation
- Secondary Channel Establishment
- Spillway Channel and Low-flow Channel Rehab
- Upland Rehabilitation



Evans Lake Tributary Restoration and Camp Evans Wilderness Park Project

What will the Project do?

Establish native aquatic and terrestrial habitat

- Non-native tree and palm removal
- Native vegetation
- Restore Evans Creek
- Build educational interpretive trail

Challenges

- Flood easement that will supersede Conservation easement
- Requirements that will lead to reduced value of the site for fish, wildlife and habitat
- Lack of assurances that project site could be maintained
- Potential for Wildlife Agencies not able to recognize any habitat mitigation value for the acreage

Summary

- Valley District requests to have their project withdrawn per the letter dated June 29, 2022
- \$2 Million in grant funds would be rolled into Proposition 1 Round 2
- A Formal Amendment will need to be done with DWR
 - Remove placeholder from the Grant Agreement
 - Update the budget to remove Valley District's project



Questions?

Prop 1 Round 2 IRWM Call for Projects Update

Ian Achimore, Senior Watershed Manager
OWOW Steering Committee | July 28, 2022
Agenda Item 4.B.



Purpose of Update

- ▶ Announce the close of the Call for Projects which ended on June 1, 2022
- ▶ Highlight projects received
- ▶ Provide schedule of next steps

Round 2 (R2) Next Steps



*Best estimate currently. Dates may change based on DWR's time needed to review applications.

Projects Seeking Grant Funding by Category

Category	Projects	Grant Requested	Grant Available*
Disadvantaged Community	6	\$13,116,020	\$4,095,000
General Implementation	18	\$54,700,206	\$14,435,100**
Total	24	\$67,816,226	\$18,530,100

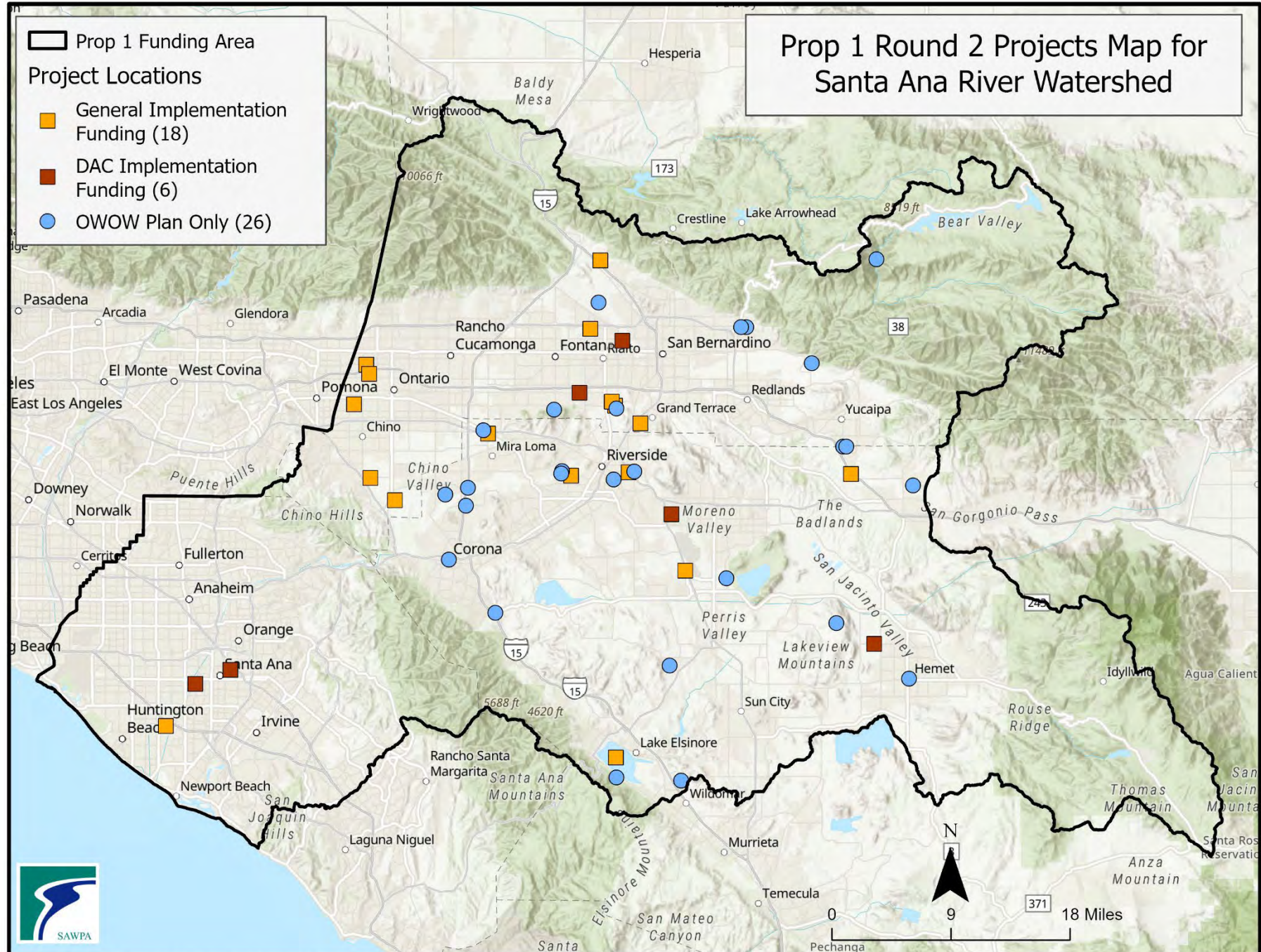
26 projects also submitted applicants in order to be included in the Santa Ana River Watershed IRWM OWOW Plan. Entities often take this action in order to be eligible for other State grant opportunities.

*There is also \$7,175,543 available through the North Orange County IRWM group for projects received through their process. Projects received by their lead administering agency, Orange County Public Works, are not shown in the above table or in this presentation.

**This amount may increase by \$2,000,000 due to roll over of funding from Prop 1 Round 1. Still awaiting approval by Department of Water Resources before it is officially increased.

Prop 1 Round 2 Projects Map for Santa Ana River Watershed

- Prop 1 Funding Area
- Project Locations
 - General Implementation Funding (18)
 - DAC Implementation Funding (6)
 - OWOW Plan Only (26)



List of DAC Projects Seeking Funding

(Applicant Full Name Shown)

Project	Lead Applicant
Box Springs Mutual Water Company Well Improvement Project	California Rural Water Association
Cottonwood Avenue Recycled Water Pipeline (East)	Eastern Municipal Water District
New Washington Well Project	City of Santa Ana
Recycled Water Use Expansion Project	City of Santa Ana
Shamrock and Meridian Septic to Sewer Conversion Project	City of Rialto
Water Quality: Lead Service Line Replacements in Bloomington DAC	West Valley Water District

DAC Projects

(With Benefits Claimed by Category)

Project Name	Applicant	Water Supply AFY	Water Quality MGD	DAC %
Box Springs Mutual Water Co. Well Improvement	CRWA	411	0.37	100%
Cottonwood Ave Recycled Water Pipeline (East)	EMWD	90	-	100%
Shamrock/Meridian Septic to Sewer Conversion	Rialto, City	-	0.13	100%
New Washington Well Project	Santa Ana	4,000	3.57	33%
Recycled Water Use Expansion Project	Santa Ana	370	-	55%
Lead Service Line Replacements Bloomington DAC	WVWD	3,454	3.08	98%

List of General Implementation Projects Seeking Funding (Applicant Full Name Shown)

Project	Lead Applicant
Lake Rialto Habitat Management and Community Open Space Project	City of Rialto
Large Landscape Water Efficiency Program	Inland Empire Utilities Agency
City of Rialto Recycled Intertie	Inland Empire Utilities Agency
Etiwanda Intervalley Water Quality and Water Resiliency Project Phase-1A	Jurupa Community Services District
Phase 1 - Lake Elsinore Algae Harvesting and Nutrient Removal Project	Lake Elsinore and San Jacinto Watersheds Authority
Wellhead Nitrate Treatment for Wells 4 & 27	Monte Vista Water District
Well Pump Replacements	Monte Vista Water District
Well 2 Replacement	Monte Vista Water District
Well 4 Replacement	Monte Vista Water District
Regional Water Distribution System Leak Detection and Repair Program	Municipal Water District of Orange County
Water Well RN #6 Nitrate Removal System	Riverside Highland Water Company
Cable Creek Basin (Upper)	San Bernardino County Flood Control District
Improved Lake Ctrculation at Prado Regional Park	San Bernardino County Regional Parks
Cactus Basins Connector Pipeline	San Bernardino Valley Municipal Water District
Santa Ana River Sustainable Parks & Tributaries Water Reuse (Purple Pipe)	San Bernardino Valley Municipal Water District
Santa Ana River Watershed Weather Modification Pilot Project	SAWPA
Water Quality of Recycled Water Used in Local Groundwater Recharge	Western Municipal Water District
Calimesa Aquifer Storage and Recovery	Yucaipa Valley Water District

General Implementation Projects (With Benefits Claimed by Category)

Project Name	Applicant	Water Supply AFY	Water Quality MGD	GHG *	Habitat Acres	Flood Protection Acres
City of Rialto Recycled Intertie	IEUA	3,500	3.10	-	-	-
Large Landscape Water Efficiency Program	IEUA	671	0.04	564,160	-	-
Etiwanda Intervalley Water Quality and Water Resiliency Phase-1A	JCSD	4,355	4.00	1,714	-	-
Phase 1 - Lake Elsinore Algae Harvesting and Nutrient Removal	LESJWA	-	1.00	-	3,000	-
Well 2 Replacement	MVWD	3,226	2.88	-	-	-
Well 4 Replacement	MVWD	1,936	1.73	-	-	-
Well Pump Replacements	MVWD	4,194	-	-	-	-
Wellhead Nitrate Treatment for Wells 4 & 27	MVWD	4,516	4.03	-	-	-
Regional Water Distribution System Leak Detection and Repair	MWDOC	1,338	-	49,289	-	-
Water Well RN #6 Nitrate Removal System	RHWC	1,300	1.20	-	-	-
Lake Rialto Habitat Management and Community Open Spac	Rialto, City	-	7.00	7	10	-
Santa Ana River Watershed Weather Modification Pilot Project	SAWPA	8,240	4.40	18,850	-	-
Cable Creek Basin (Upper)	SBCFCD	859	-	-	-	390
Improved Lake Circulation at Prado Regional Park	SBCRP	-	117,643.0	-	62	-
Cactus Basins Connector Pipeline	SBVMWD	1,360	-	-	-	-
Santa Ana River Sustainable Parks & Tributaries Water Reuse	SBVMWD	5,109	-	-	187	-
Improving Water Quality of Recycled Water Used in Local GW	WMWD	985	3.0	330	-	-
Calimesa Aquifer Storage and Recovery	YVWD	2,890	-	723	-	-

*GHG = greenhouse gas reduction expressed in tons of CO2.

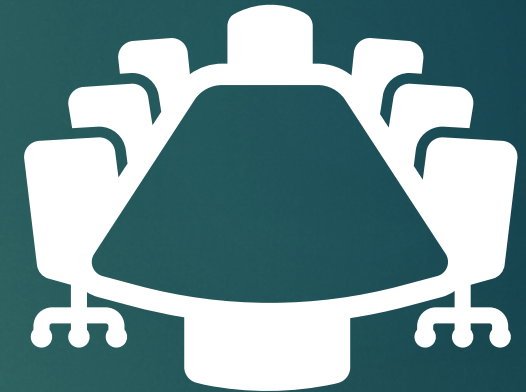
Next Step: Staff Review and Participatory Budgeting

- ▶ Comments provided to project proponents (June 24),
- ▶ Stakeholders commented on projects (July 18),
- ▶ Up to three participatory budgeting workshops to be held with the lead applicants
 - ▶ Explain/defend benefits claimed and the geographic areas with benefits
 - ▶ Come to consensus on final recommended funding list of DAC and General Implementation projects



Next Steps (Continued)

- ▶ After participatory budgeting process ends, SAWPA staff will recommend final list of projects to the OWOW Steering Committee on September 22, 2022.
 - ▶ Orange County-based projects will be included from the North OC IRWM process.
- ▶ Project proponents submit application to Department of Water Resources by February 1, 2023.



Questions