



Inland Empire Brine Line Reserve Policy RFP

David Ruhl, Engineering Manager
Project Agreement 24 Committee
November 2, 2021 | Item No. 5.A

SAWPA Reserve Policy

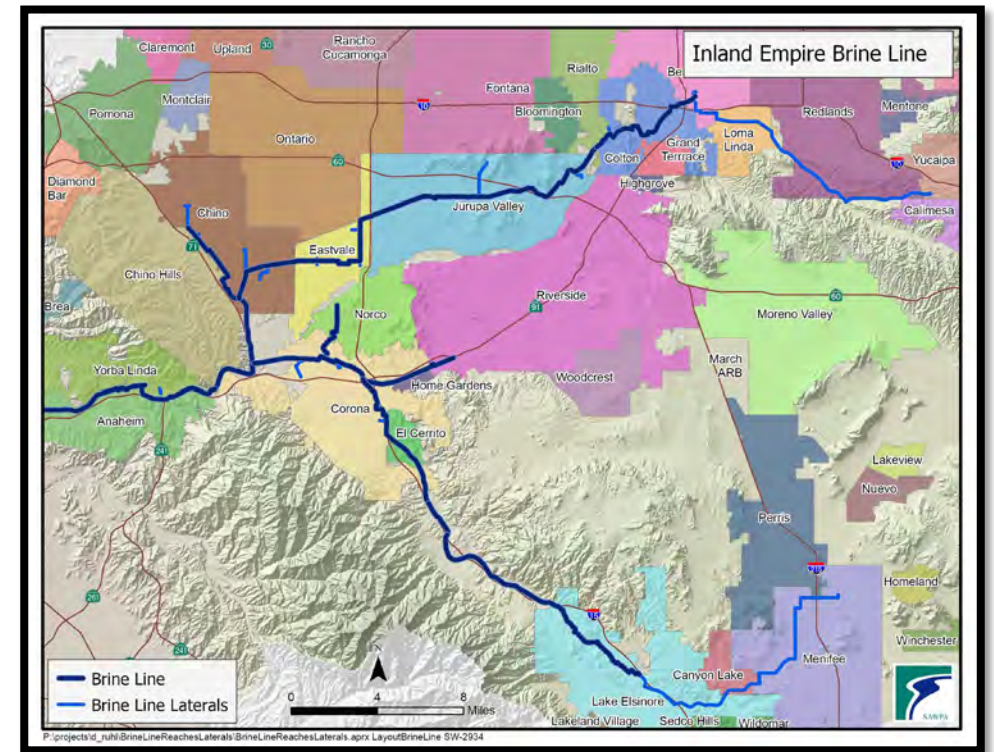
Recommendation:

- That the PA 24 Committee authorize the GM to execute a GSA and TO No. RFC240-02 with Raftelis in an amount not to exceed \$50,895 to provide professional services for the Inland Empire Brine Line Reserve Policy.

Background

SAWPA maintains 9 reserves that pertain to the Brine Line

- *Brine Line Operating Reserve*
- *Rate Stabilization Reserve*
- *Pipeline Replacement Reserve*
- *OC San Rehabilitation Reserve*
- *Debt Retirement Reserve*
- *OC San Future Capacity Reserve*
- *Self-Insurance Reserve*
- *Capacity Management Reserve*
- *Flow Imbalance Reserve*



Reserve Policy Scope of Work

- Review reserve policies and fund balance requirements for each reserve.
- Recommend minimum, maximum, and target reserve levels.
- Recommend methodology to determine reserve levels and provide basis for recommendation.
- Review lease rate for Brine Line capacity.
- Prepare Technical Memorandum, meeting with SAWPA and Agency staff, present recommendations to PA 24 and Commission



Selection Process

- 2 Proposals received
 - Fieldman Rolapp & Associates
 - Raftelis
- Member Agency staff on selection committee
- Both firms selected for interview
- Selection based on scoring of the proposals, interviews, and fee proposal

Selection Process

<u>Firm</u>	<u>Fee Proposal</u>	<u>Score</u>
Fieldman Rolapp & Associates	\$81,550	63.9
Raftelis	\$49,875	90.5

- Raftelis selected as most qualified
- Additional meeting to discuss scope, allocation of billing hours
 - Revised scope of work and fee estimate \$50,895
 - Add additional in person meeting and presentation

SAWPA Reserve Policy

Recommendation:

- That the PA 24 Committee authorize the GM to execute a GSA and TO No. RFC240-02 with Raftelis in an amount not to exceed \$50,895 to provide professional services for the Inland Empire Brine Line Reserve Policy.

Questions?