


MSAR BACTERIA TASK FORCE

AUGUST 23, 2021



PURPOSES OF TODAY'S DISCUSSION

- UNDERSTAND CURRENT STATUS OF SANTA ANA WATER BOARD STAFFING LIMITATIONS
 - UNDERSTAND MSAR BACTERIAL INDICATOR TMDL COMPLIANCE REQUIREMENTS FOR EXISTING TMDL
 - BRAINSTORM TASK FORCE ACTIVITIES THAT COULD ASSIST TASK FORCE MEMBERS WITH TMDL COMPLIANCE
- 

CONTROLLABLE V. UNCONTROLLABLE BACTERIA SOURCES

CONTROLLABLE SOURCES

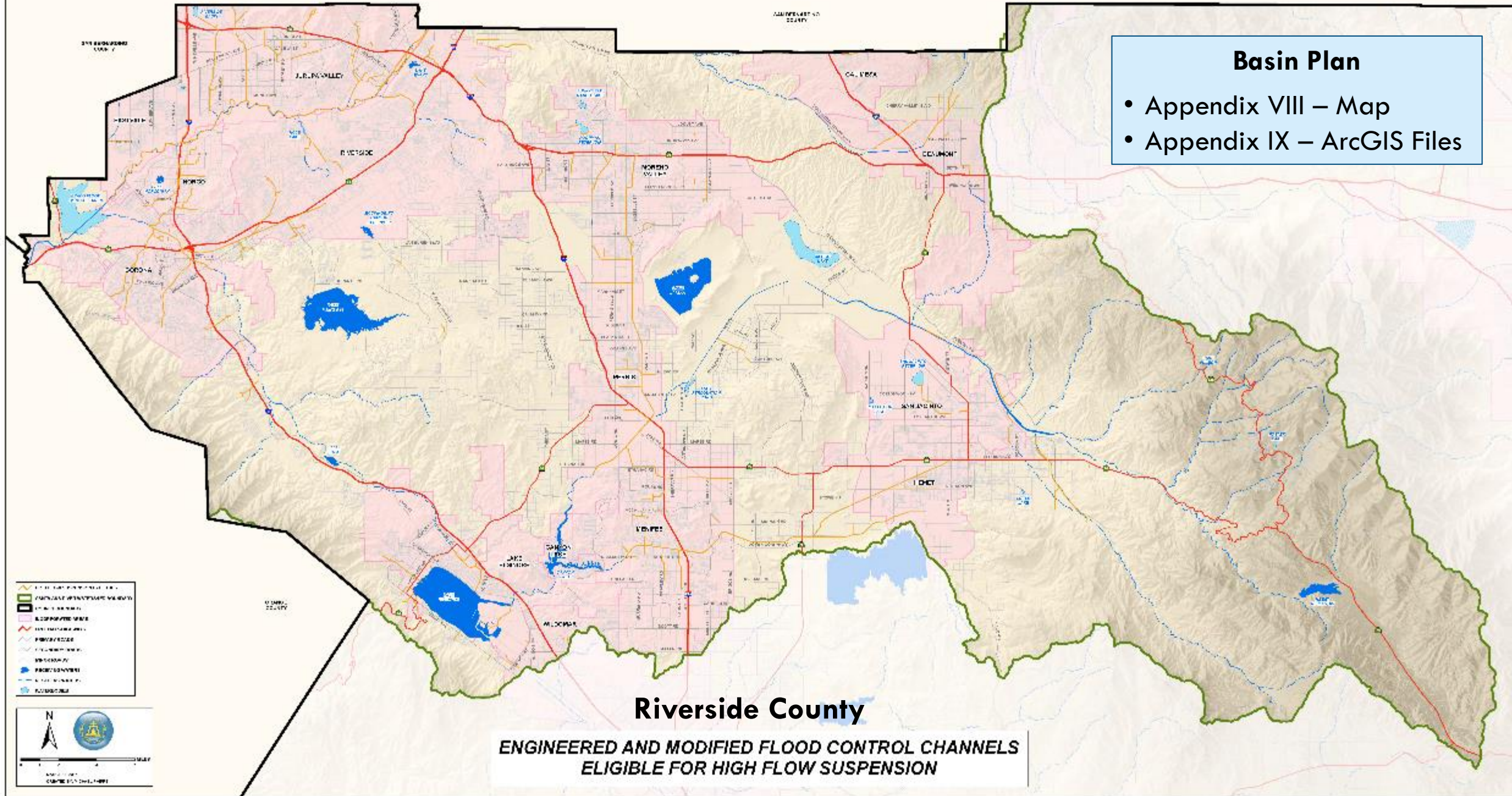
- IMPROPER USE OF FERTILIZERS
- IMPROPER HANDLING OF PET WASTES
- CROSS-CONNECTIONS
- LEAKY SEWER CONNECTIONS
- SANITARY SEWER OVERFLOWS
- IMPROPER MANAGEMENT OF CAFO WASTE
- RUNOFF FROM YARDS
- HOMELESS ENCAMPMENTS

UNCONTROLLABLE SOURCES

- WILDLIFE ACTIVITY & WASTE
- BACTERIAL REGROWTH WITHIN SEDIMENT OR BIOFILM
- RESUSPENSION FROM DISTURBED SEDIMENT
- CONCENTRATIONS OF SEMI-WILD WATERFOWL
- SHEDDING DURING SWIMMING

Basin Plan

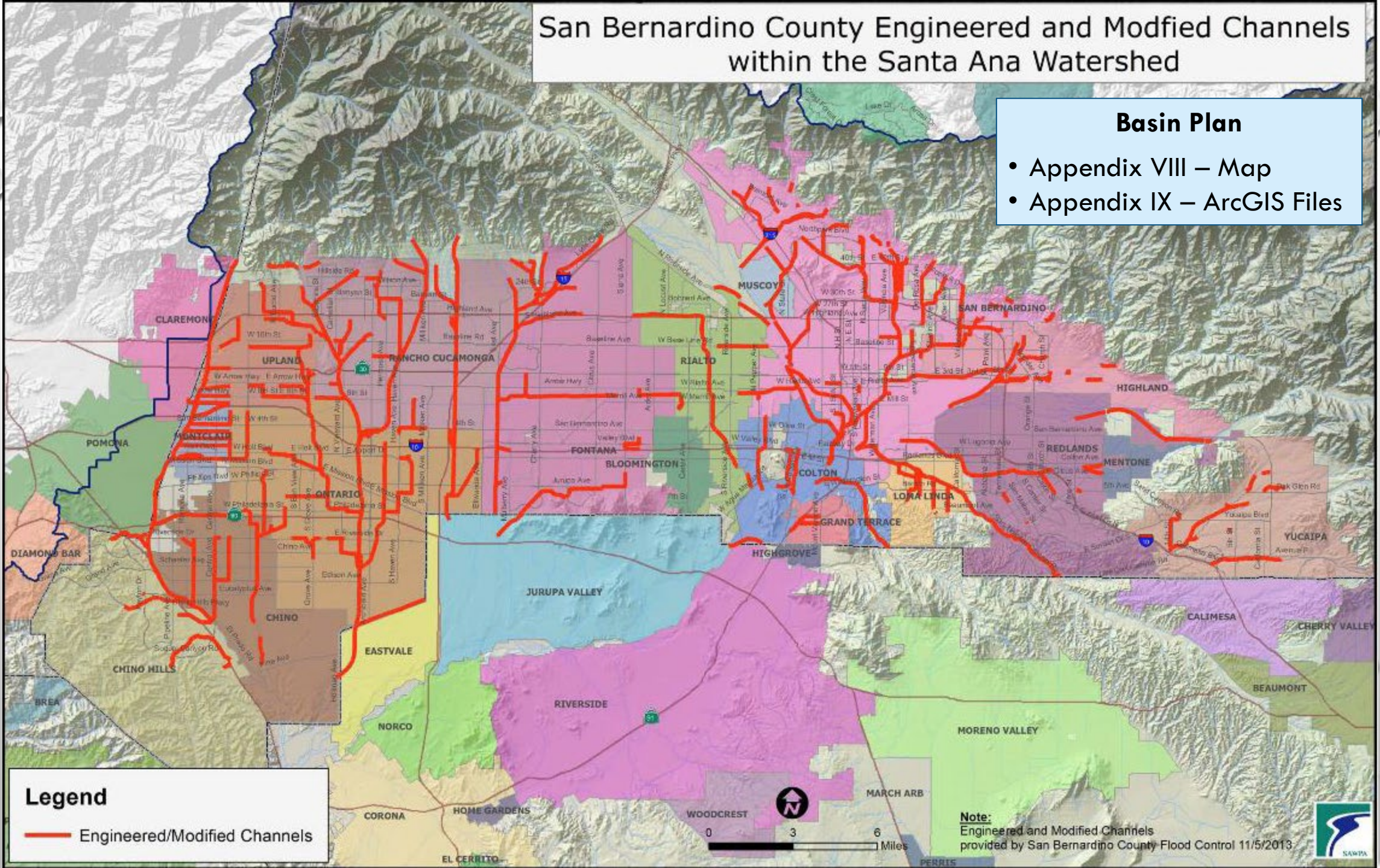
- Appendix VIII – Map
- Appendix IX – ArcGIS Files



San Bernardino County Engineered and Modified Channels within the Santa Ana Watershed

Basin Plan

- Appendix VIII – Map
- Appendix IX – ArcGIS Files



Orange County Engineered and Modified Flood Control Channels Eligible for High Flow Suspension

Basin Plan

- Appendix VIII – Map
- Appendix IX – ArcGIS Files

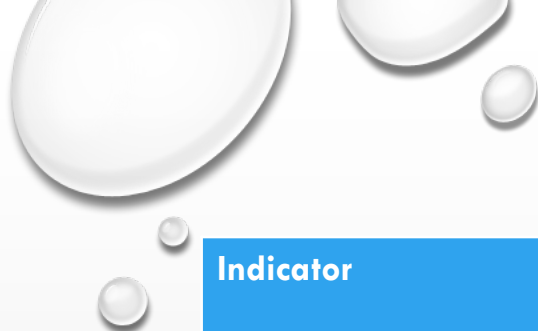
Legend

— Engineered/Modified Channels

Note:
Engineered and Modified Channels
provided by OC Public Works

0 1.25 2.5 5 Miles

Sources: Ed DeLorme, USGS, NPS

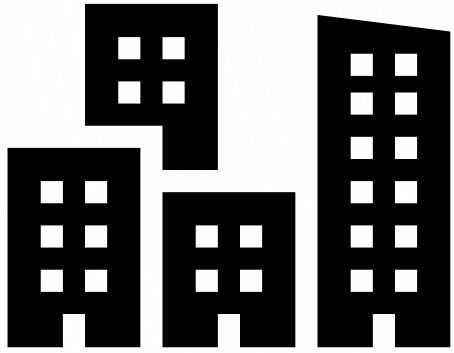


Indicator	TMDLs for Bacterial Indicators WLA for Urban Runoff, including stormwater WLAs for CAFOs LAs for Agricultural Runoff LA for Natural Sources
Dry Summer Conditions: April 1 through October 31, no later than December 31, 2015	
<i>E. Coli</i>	<113 organisms/100 mL (5-sample/30-day mean) No more than 10% of samples exceed 212 organisms/100 mL in any 30-day period
Wet Winter Conditions: November 1 through March 31, no later than December 31, 2025	
<i>E. Coli</i>	<113 organisms/100 mL (5-sample/30-day mean) No more than 10% of samples exceed 212 organisms/100 mL in any 30-day period

**TABLE 5-9X – TMDLS FOR BACTERIAL INDICATORS IN
MIDDLE SANTA ANA RIVER WATERBODIES**

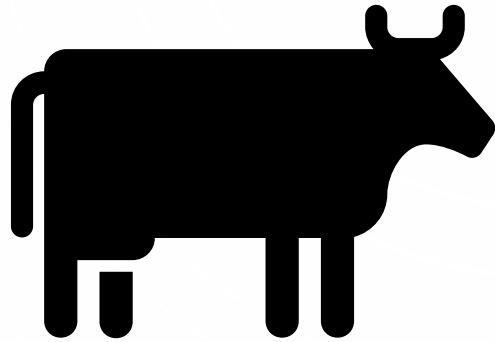


Existing TMDL Compliance Mechanisms



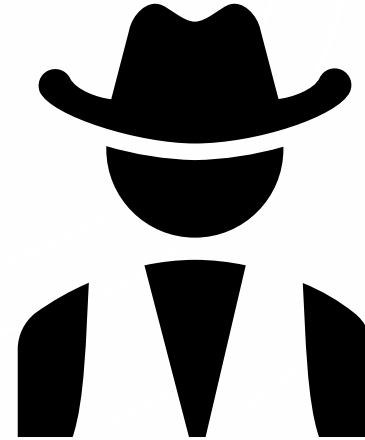
Phase I MS4s

Implement dry season CBRPs
CBRPs = WQBELs
Wet weather CBRPs
expected to be due 24
months after next NPDES
Permit



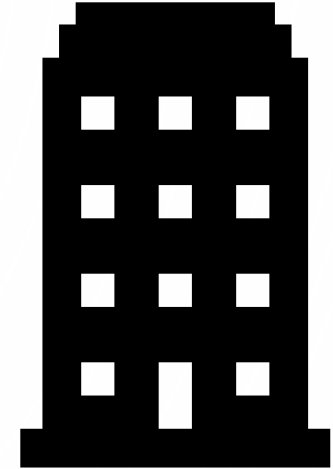
Dairies

Implement WQ monitoring
May satisfy through TF
Propose projects or programs
to improve WQ if monitoring
results indicate that CAFO WLAs
are not likely to be met



Agricultural Sources

BASMP – Task 5.2 of TMDL



Small MS4s

CBRP requirements in
2017 General Order