

Update to Lake Elsinore and Canyon Lake Nutrient TMDL Task Force

Steven Wolosoff,
CDM Smith

Dr. Paula Kulis,
CDM Smith

Dr. Michael Anderson

2/22/2021



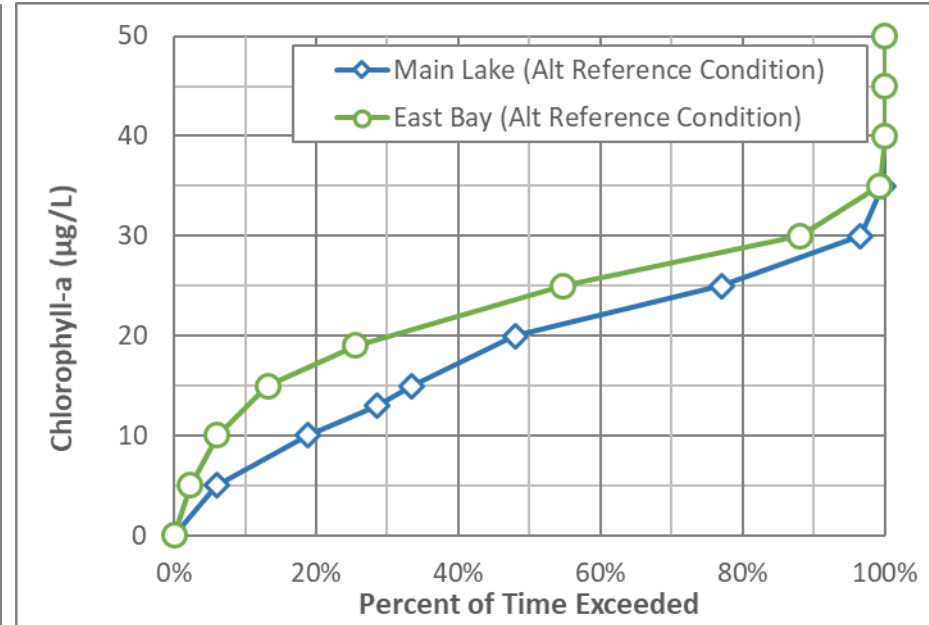
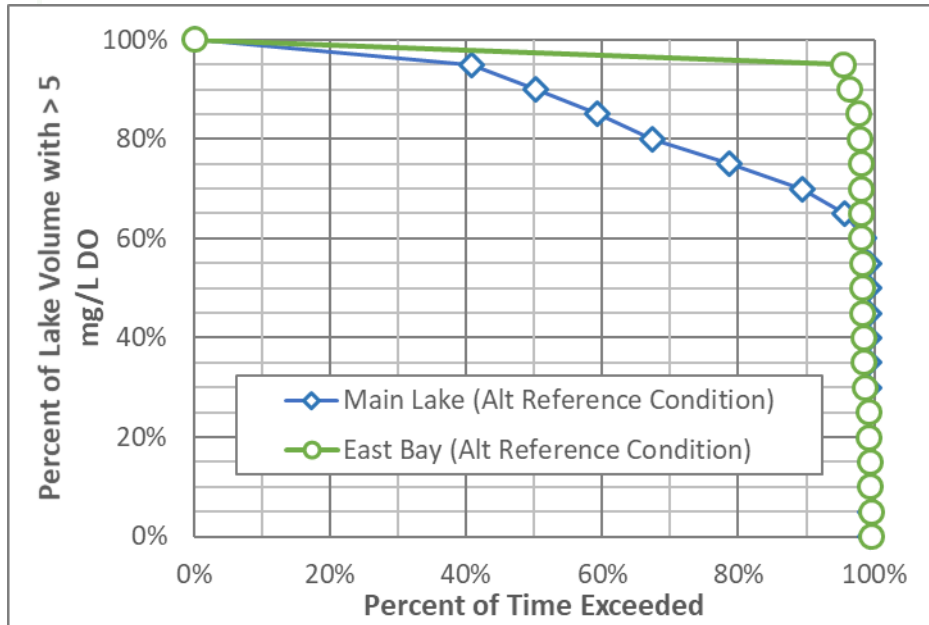
**CDM
Smith**

A Dynamic Time for the Task Force

- MS4 permit pending,
 - TMDL implementation requirements for current TMDL (aka 2004 TMDL)
- TMDL revision tuning,
 - Revised TMDL with increased nutrient load reduction and improved linkage to water quality response targets
 - Cost share calculations based on watershed model for TMDL revision
- Cyanotoxin regulations evolving,
- Lake models are migrating,
- LEAMS is aging, watershed loads are declining, CL alum is working,
- Global pandemic is taxing

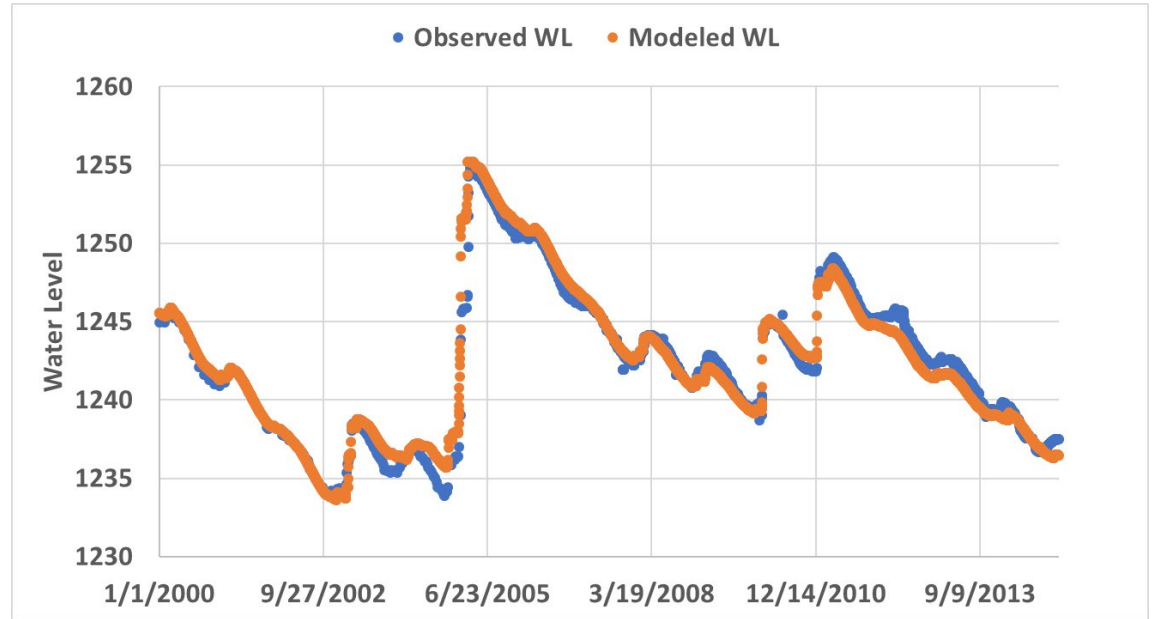
AEM3D: Canyon Lake

- Preliminary results for alternative reference scenario

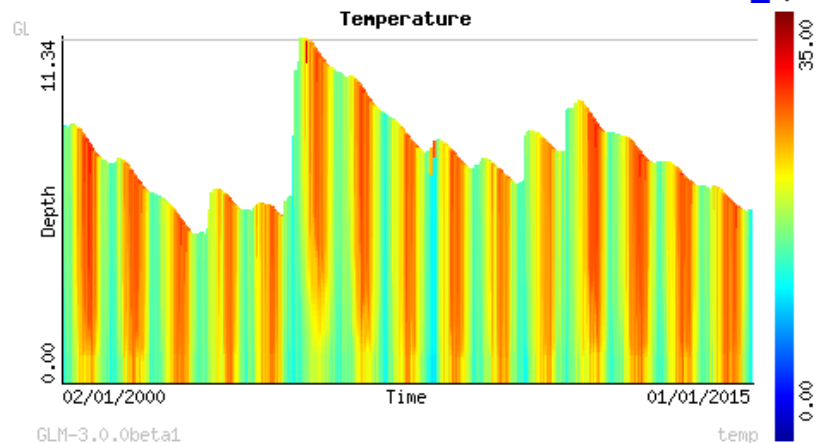
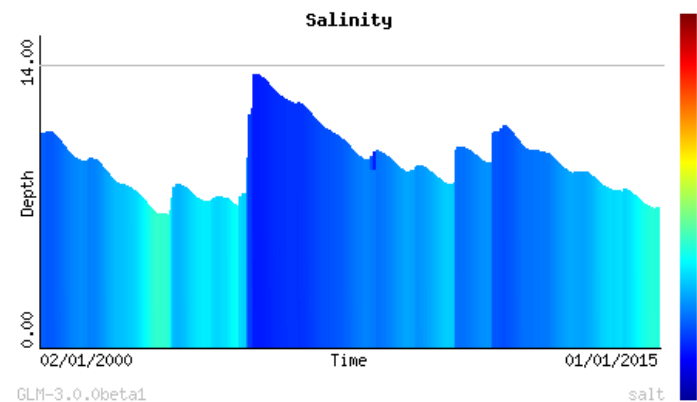
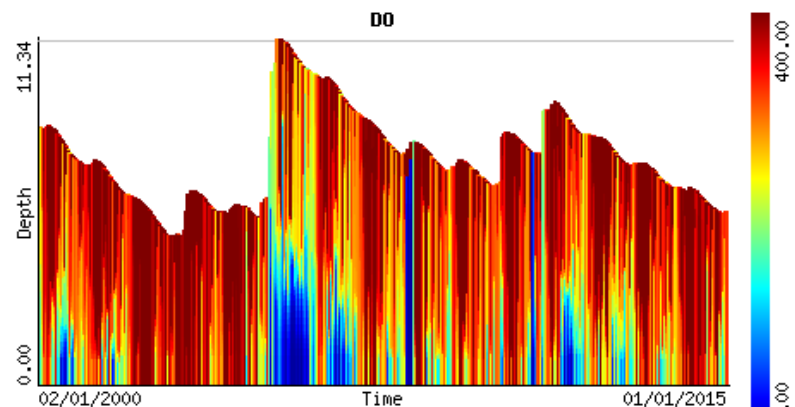
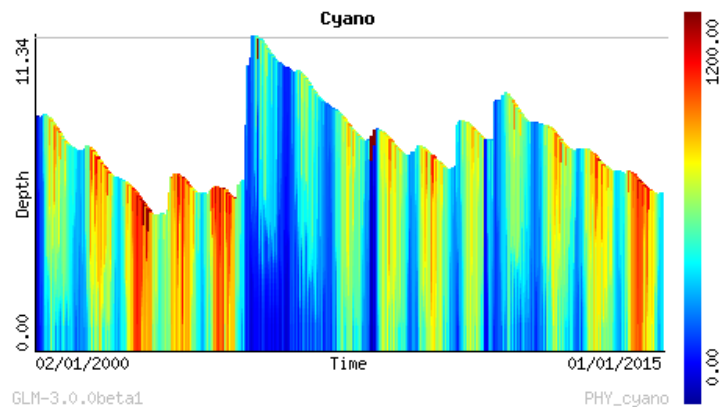


Lake Elsinore Migration

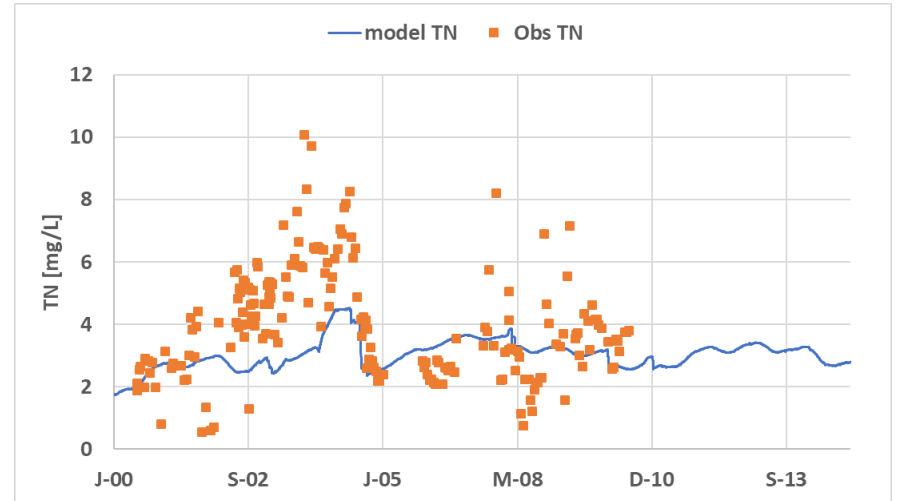
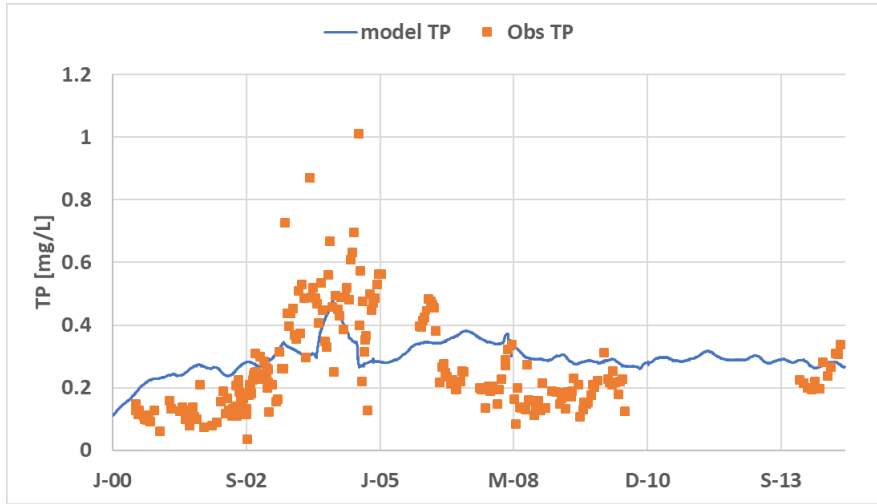
- Migration nearly complete
 - Finalizing
 - Extending model through 2020
- Preparing sensitivity simulations



GLM Results

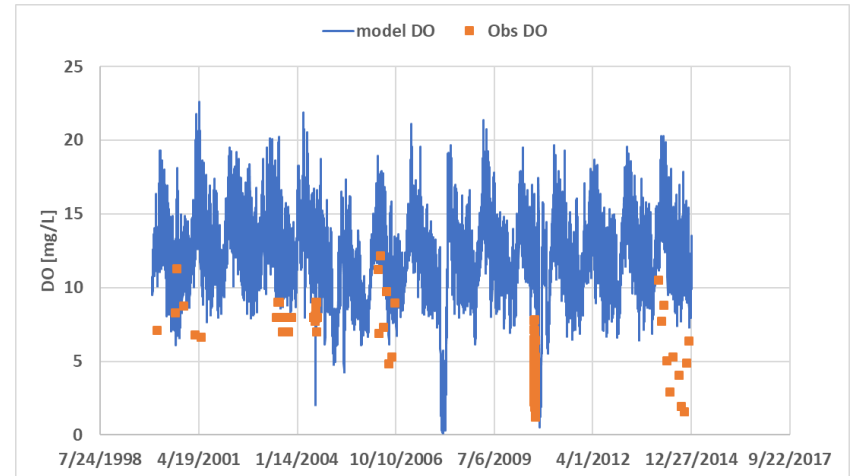
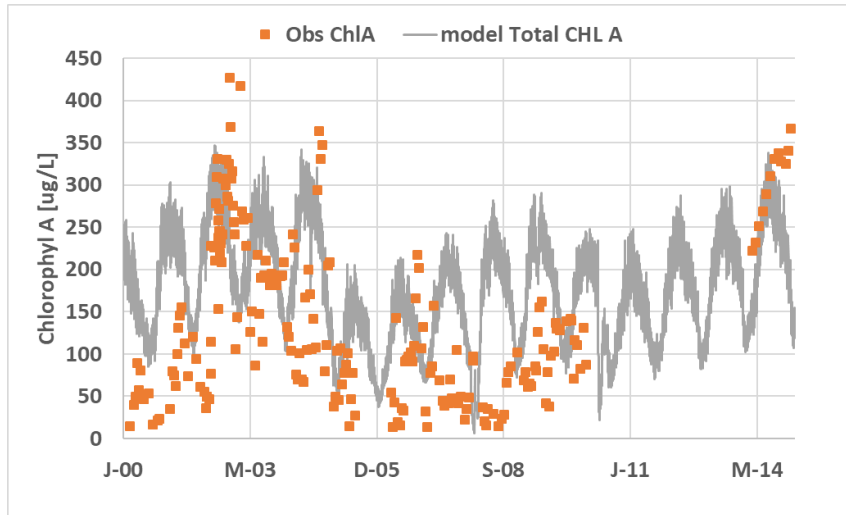


Lake Elsinore Nutrients



Lake Elsinore Dissolved Oxygen and Chl A

- Model results from 2 meters below water surface



Future Uses of Migrated Models

- Compliance assessment approach in revised TMDL
- Simulation of potential enhanced or new in-lake controls, and lake water quality improvements from increasing watershed BMP deployments