



S A W P A

SANTA ANA WATERSHED PROJECT AUTHORITY

11615 Sterling Avenue, Riverside, California 92503 • (951) 354-4220

PURSUANT TO THE PROVISIONS OF EXECUTIVE ORDER N-29-20 ISSUED BY GOVERNOR GAVIN NEWSOM ON MARCH 19, 2020, THIS MEETING WILL BE CONDUCTED VIRTUALLY. ALL VOTES TAKEN DURING THIS VIRTUAL MEETING WILL BE CONDUCTED BY ORAL ROLL CALL.

This meeting will be accessible as follows:

Meeting Access Via Computer (Zoom)*:	Meeting Access Via Telephone*:
• https://sawpa.zoom.us/j/93208815039	• 1 (669) 900-6833
• Meeting ID: 932 0881 5039	• Meeting ID: 932 0881 5039
* Participation in the meeting via the Zoom app (a free download) is strongly encouraged; there is no way to protect your privacy if you elect to call in by phone to the meeting.	

AGENDA

TUESDAY, MARCH 2, 2021 – 10:00 A.M.

(*or immediately following the 9:30 a.m. SAWPA Commission meeting, whichever is earlier)

REGULAR MEETING OF THE PROJECT AGREEMENT 24 COMMITTEE

Inland Empire Brine Line

Committee Members

Eastern Municipal Water District	Inland Empire Utilities Agency
Paul D. Jones, General Manager	Director Jasmin A. Hall
Director David J. Slawson (Alt)	Shivaji Deshmukh, General Manager (Alt)
San Bernardino Valley Municipal Water District	Western Municipal Water District
Director T. Milford Harrison, Chair	Director Brenda Dennstedt, Vice Chair
Director Gil Botello (Alt)	Craig Miller, General Manager (Alt)

1. CALL TO ORDER | PLEDGE OF ALLEGIANCE (T. Milford Harrison, Chair)

2. PUBLIC COMMENTS

Members of the public may address the Committee on items within the jurisdiction of the Committee; however, no action may be taken on an item not appearing on the agenda unless the action is otherwise authorized by Government Code §54954.2(b).

3. ITEMS TO BE ADDED OR DELETED

Pursuant to Government Code §54954.2(b), items may be added on which there is a need to take immediate action and the need for action came to the attention of the Santa Ana Watershed Project Authority subsequent to the posting of the agenda.

4. APPROVAL OF MEETING MINUTES: February 2, 20215

Recommendation: Approve as posted.

5. COMMITTEE DISCUSSION/ACTION ITEMS

A. PRADO RESERVOIR | BRINE LINE MAINTENANCE ACCESS STRUCTURE PROTECTION (PA24#2021.4)9

Presenter: David Ruhl

Recommendation: Receive and file.

B. BRINE LINE REACH 4A UPPER CORROSION REPAIRS (PA24#2021.3)11

Presenter: Carlos Quintero

Recommendation: Receive and file.

C. BRINE LINE SERVICE CONTRACTS | REQUEST FOR PROPOSALS (PA24#2021.5).....25

Presenter: Carlos Quintero

Recommendation: Direct the General Manager to issue Requests for Proposals (RFPs) for the Inland Empire Brine Line service contracts.

D. BRINE LINE VIRTUAL TOUR

Presenter: Carlos Quintero

Recommendation: Receive and file.

6. INFORMATIONAL REPORTS

Recommendation: Receive for information.

A. BRINE LINE FINANCIAL REPORT – DECEMBER 202071

Presenter: Karen Williams

7. REQUEST FOR FUTURE AGENDA ITEMS

8. CLOSED SESSION

There were no Closed Session items anticipated at the time of the posting of this agenda.

9. ADJOURNMENT

PLEASE NOTE:

In compliance with the Americans with Disabilities Act, if you need special assistance to participate in this meeting, please contact the Clerk of the Board at (951) 354-4220. Notification at least 48 hours prior to the meeting will enable staff to make reasonable arrangements to ensure accessibility to this meeting.

Materials related to an item on this agenda submitted to the Committee after distribution of the agenda packet are available for public inspection during normal business hours at the SAWPA office, 11615 Sterling Avenue, Riverside, and available at www.sawpa.org, subject to staff's ability to post documents prior to the meeting.

Declaration of Posting

I, Kelly Berry, CMC, Clerk of the Board of the Santa Ana Watershed Project Authority declare that on February 25, 2021, a copy of this agenda has been uploaded to the SAWPA website at www.sawpa.org and posted at SAWPA's office, 11615 Sterling Avenue, Riverside, California.

2021 Project Agreement 24 Committee Regular Meetings

Inland Empire Brine Line

First Tuesday of Every Month

(Note: All meetings begin at 10:00 a.m., or immediately following the 9:30 a.m. SAWPA Commission meeting, whichever is earlier, unless otherwise noticed, and are held at SAWPA.)

January 1/5/21 Regular Committee Meeting [cancelled]	February 2/2/21 Regular Committee Meeting
March 3/2/21 Regular Committee Meeting	April 4/6/21 Regular Committee Meeting
May 5/4/21 Regular Committee Meeting	June 6/1/21 Regular Committee Meeting
July 7/6/21 Regular Committee Meeting	August 8/3/21 Regular Committee Meeting
September 9/7/21 Regular Committee Meeting	October 10/5/21 Regular Committee Meeting
November 11/2/21 Regular Committee Meeting	December 12/7/21 Regular Committee Meeting

Page Intentionally Blank



PROJECT AGREEMENT 24 COMMITTEE
Inland Empire Brine Line
REGULAR MEETING MINUTES
February 2, 2021

COMMITTEE MEMBERS PRESENT

T. Milford Harrison, Chair, San Bernardino Valley Municipal Water District Governing Board
Brenda Dennstedt, Vice Chair, Western Municipal Water District Governing Board
Jasmin A. Hall, Inland Empire Utilities Agency Governing Board
Paul D. Jones, Eastern Municipal Water District General Manager

ALTERNATE COMMITTEE MEMBERS PRESENT [Non-Voting]

None

COMMITTEE MEMBERS ABSENT

None

STAFF PRESENT

Rich Haller, Karen Williams, Carlos Quintero, David Ruhl, Dean Unger, Kelly Berry

OTHERS PRESENT

Andrew D. Turner, Lagerlof, LLP

1. CALL TO ORDER | PLEDGE OF ALLEGIANCE

The regular meeting of the PA 24 Committee was called to order at 10:13 a.m. by Chair Harrison on behalf of the Santa Ana Watershed Project Authority, 11615 Sterling Avenue, Riverside, California. Pursuant to the provisions of Executive Order N-29-20, this meeting was conducted virtually. All votes taken during this meeting were conducted via oral roll call.

2. PUBLIC COMMENTS

There were no public comments; there were no public comments received via email.

3. ITEMS TO BE ADDED OR DELETED

There were no added or deleted items.

4. APPROVAL OF MEETING MINUTES: November 3, 2020

Chair Harrison called for a motion to approve the November 3, 2020 meeting minutes as posted.

MOVED, approve the November 3, 2020 meeting minutes.

Result:	Adopted by Roll Call Vote (Unanimously)
Motion/Second:	Dennstedt/Jones
Ayes:	Dennstedt, Hall, Harrison, Jones
Nays:	None
Abstentions:	None
Absent:	None

5. COMMITTEE DISCUSSION/ACTION ITEMS

A. EUCLID AVENUE (REACH IV-A AND IV-D) MAINTENANCE ACCESS STRUCTURE (MAS) REHABILITATION PROJECT – NOTICE OF COMPLETION (PA24#2021.1)

David Ruhl provided a PowerPoint presentation contained in the agenda packet on pages 10 – 17. The project was completed on time and under budget. The Notice of Completion will be filed with the San Bernardino County Clerk upon receipt of the required documents.

MOVED, authorize the General Manager to accept the Abhe & Svoboda Inc., work as complete and direct staff to file a Notice of Completion with the San Bernardino County Clerk upon the following:

- a. Contractor has delivered all documents required by the Contract Documents;
- b. Notice from Engineer accepting the work;
- c. Receipt of Final Application for Payment from the Contractor; and,
- d. Notice from Construction Manager recommending final payment.

Result: **Adopted by Roll Call Vote (Passed)**
Motion/Second: Jones/Dennstedt
Ayes: Dennstedt, Hall, Harrison, Jones
Nays: None
Abstentions: None
Absent: None

B. ALCOA DIKE – LOWER REACH IV-B AND CRC LATERAL UTILITY PROTECTION PROJECT – NOTICE OF COMPLETION (PA24#2021.2)

David Ruhl provided a PowerPoint presentation contained in the agenda packet on pages 20 – 27. The project was completed ahead of schedule and under budget. The Notice of Completion will be filed with the San Bernardino County Clerk upon receipt of the required documents.

MOVED, authorize the General Manager to accept the Weka Inc., work as complete and direct staff to file a Notice of Completion with the Riverside County Clerk upon the following:

- a. Contractor has delivered all documents required by the Contract Documents;
- b. Notice from Engineer accepting the work;
- c. Receipt of Final Application for Payment from the Contractor; and,
- d. Notice from Construction Manager recommending final payment.

Result: **Adopted by Roll Call Vote (Passed)**
Motion/Second: Dennstedt/Hall
Ayes: Dennstedt, Hall, Harrison, Jones
Nays: None
Abstentions: None
Absent: None

C. PINE AVENUE IMPROVEMENTS

Carlos Quintero provided a PowerPoint presentation contained in the agenda packet on pages 29 – 35. Committee Member Jones noted SAWPA has a good easement currently in place so those rights should not be diminished in the future. Quintero stated the rights currently in place will be maintained.

This item was for informational and discussion purposes; no action was taken on Agenda Item No. 5.C.

6. INFORMATIONAL REPORTS

Recommendation: Receive and file the following oral/written reports/updates.

A. **BRINE LINE FINANCIAL REPORT – SEPTEMBER 2020**

B. **BRINE LINE FINANCIAL REPORT – OCTOBER 2020**

C. **BRINE LINE FINANCIAL REPORT – NOVEMBER 2020**

7. REQUEST FOR FUTURE AGENDA ITEMS

There were no requests for future agenda items.

8. CLOSED SESSION

There was no closed session.

9. ADJOURNMENT

There being no further business for review, Chair Harrison adjourned the meeting at 10:37 a.m.

Approved at a Regular Meeting of the Project Agreement 24 Committee on March 2, 2021.

T. Milford Harrison, Chair

Attest:

Kelly Berry, CMC
Clerk of the Board

Page Intentionally Blank

PA 24 COMMITTEE MEMORANDUM NO. 2021.4

DATE: March 2, 2021

TO: Project Agreement 24 Committee
(Inland Empire Brine Line)

SUBJECT: Prado Reservoir | Brine Line Maintenance Access Structure
Protection

PREPARED BY: David Ruhl, Engineering Manager

RECOMMENDATION

That the Project Agreement 24 Committee receive and file the status report on the Prado Reservoir Maintenance Access Structure Protection.

DISCUSSION

As part of the U.S. Army Corps of Engineers (Corps) Santa Ana River Mainstem Project to increase the flood control storage behind Prado Dam the Corps is anticipating raising the Prado Dam Spillway by approximately 20 feet. All Brine Line maintenance access structures (MAS) will need to be watertight up to the flood storage elevation of 566 feet. As the project sponsor, Orange County Public Works (OCPW) is responsible for protecting utilities between elevation 556 feet and 566 feet. In total, there are 18 MAS on Reach IV-A and Reach IV-D between the elevation of 556 feet and 566 feet, see attached Figure 1. Four (4) of the 18 MAS are sealed and watertight and no modifications are necessary. 14 of the 18 MAS need to be modified to be watertight. The estimated cost to modify the 14 MAS is about \$200,000. Since SAWPA has prior rights, OCPW's is responsible to pay the cost of the modifications. Work includes lining of the MAS and installation of a new watertight frame and cover. A recommendation to authorize a contract for work exceeding the General Managers authority is anticipated in May 2021.

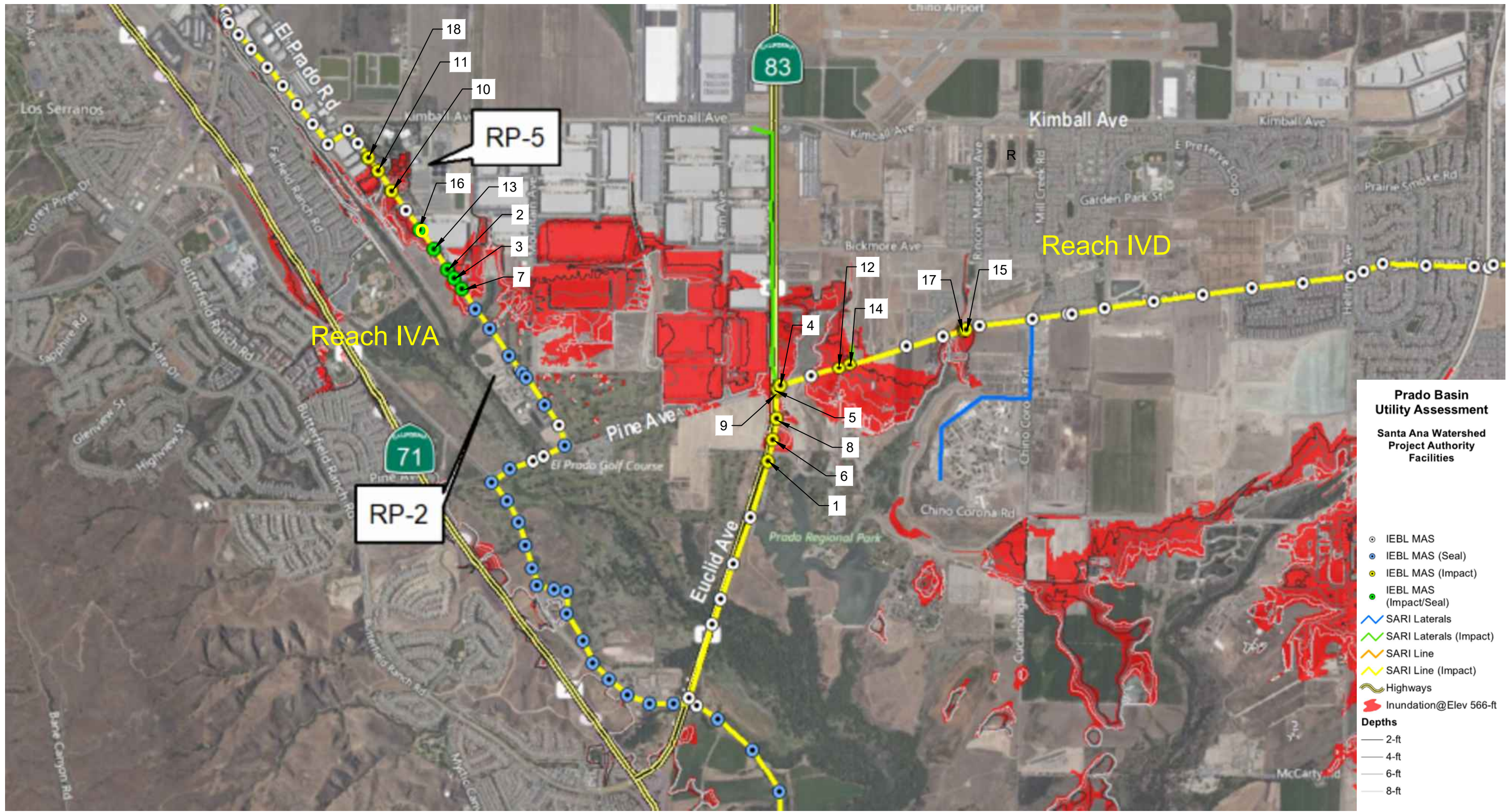
RESOURCE IMPACTS

Funds to cover the construction costs are budgeted under the Fiscal Year 2021 Budget, Fund 240 and Fund 320. Costs are reimbursable by OCPW.

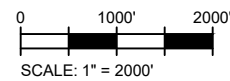
Attachments:

1. Figure 1

9/17/2020 9:10:52 AM - C:\USERS\ELIAS.SEBHATU\DESKTOP\PRADO\SCHE POLES REVIEWED\FIGURES.DWG - SEBHATU, ELIAS



The yellow and green maintenance access structures (MAS) are located between elevation 556 feet and 566 feet. The green MAS are sealed and the yellow MAS are not sealed.



TETRA TECH
 www.tetrattech.com
 17885 VON KARMAN AVENUE, SUITE 500
 IRVINE, CA 92614
 (949) 809-5000

ORANGE COUNTY PUBLIC WORKS
 PRADO DAM UTILITY RELOCATIONS PHASE I

**SAWPA INUNDATED
 MAINTENANCE ACCESS STRUCTURES (MAP)**

Project No.: 200-01297-20038
 Date: SEPTEMBER 2020
 Designed By: CAB

FIGURE
1

Bar Meas 1 inch

Copyright Tetra Tech

PA 24 COMMITTEE MEMORANDUM NO. 2021.3

DATE: March 2, 2021

TO: Project Agreement 24 Committee
(Inland Empire Brine Line)

SUBJECT: Brine Line Reach 4A Upper Corrosion Repairs

PREPARED BY: Carlos Quintero, Operations Manager

RECOMMENDATION

Receive and file.

DISCUSSION

Reach 4A Upper of the Brine Line serves the Inland Empire Utilities Agencies industrial dischargers:

1. Mission Linen – An industrial laundry facility
2. California Institution for Men (CIM) – A State of California prison facility. The discharge to the Brine Line from CIM is from a nitrate treatment system for drinking water.
3. OLS Energy – An electricity generating facility. OLS provides electricity to CIM.
4. Repet, Inc. – A plastic recycling facility.

This reach has been subject to corrosion issues, mainly caused by hydrogen sulfide conversion to sulfuric acid. Most of the impacted maintenance access structures exposed to sulfide impacts have been lined; however, there has been some impact to the epoxy liner and repairs are necessary.

Additionally, some of the maintenance access structures are sealed using a lined ductile iron tee and a bolted blind flange to prevent water intrusion (these structures are in the Prado Dam floodplain area). The ductile iron tee riser was lined during the previous Cured in Place Project (CIPP) in 2012. The liner on the riser portion of the tee has deteriorated and needs repair.

Ayala Engineering, a specialty lining contractor, has been removing the damaged portion of the liner, re-applying a mortar layer, and re-coating the riser section using a Sprayroq, a polyurethane based liner. As of February 15, 2021, a total of 17 maintenance access structures have been repaired (between Chino Creek and Euclid Avenue). Phase 2 of the corrosion repair project will focus on structures located along El Prado Avenue between Pine Avenue and Kimball Avenue.

CRITICAL SUCCESS FACTORS

5. Protect and preserve the useful life of Brine Line assets through strategic maintenance, repair, and capital improvements.

RESOURCE IMPACTS

Funds for the Brine Line Service Contracts are included in FY20-21 Fund 240 (Brine Line Enterprise; Facility Repair and Maintenance).

Attachments:

1. Area Map
2. Power Point Presentation

Reach 4A Upper Corrosion Protection Project

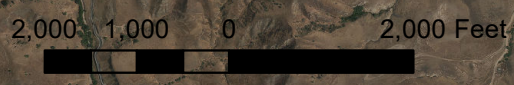
- Brine Line MAS
- Brine Line



Reach 4A Upper Corrosion Protection Phase 2 - Chino Creek to Kimball Avenue

CA-71

Reach 4A Upper Corrosion Protection Phase 1 - Chino Creek to Euclid Avenue



Page Intentionally Blank

Reach 4A Upper Corrosion Protection Repairs Project

Carlos Quintero, Operations Manager

PA24 Committee | March 2, 2021

Item No. 5.B.

Recommendation

- Receive and file

Inland Empire Brine Line

— Brine Line Laterals

Brine Line

REACH

— IV

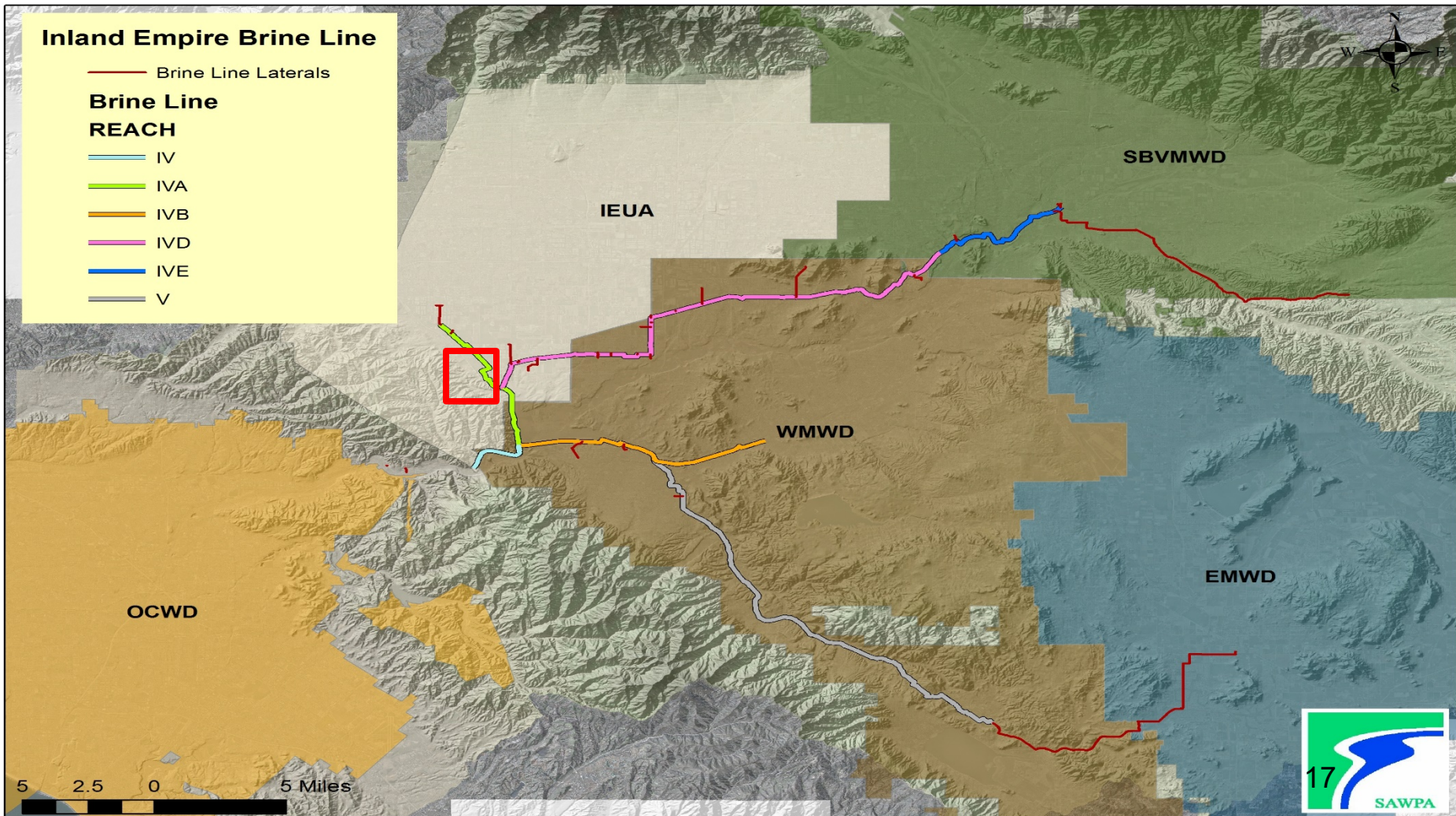
— IVA

— IVB

— IVD

— IVE

— V

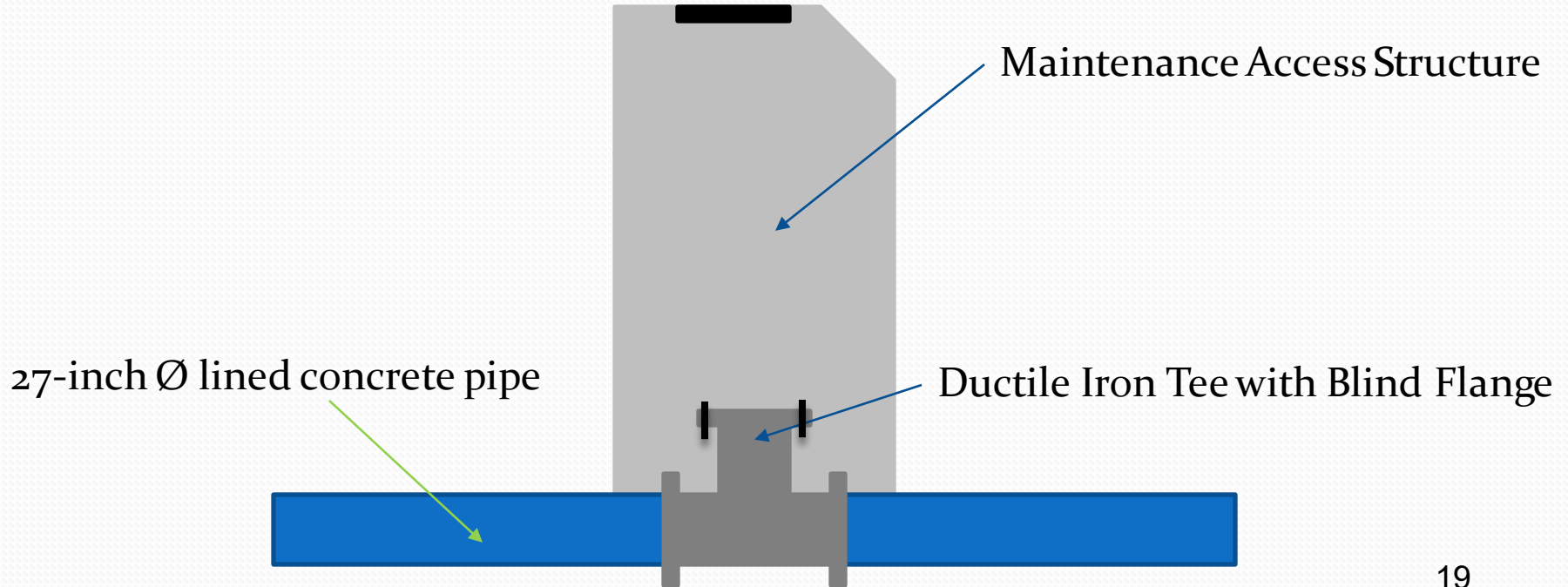


Reach 4A Upper

- Phase 1 (Complete)
 - Repair of 17 MAS (between Chino Creek and Euclid Avenue)
- Phase 2 (On-going)
 - Focus on Ductile Iron Tee Riser
 - Deteriorated PVC liner
 - 19 MAS (along El Prado Road between Pine Avenue and Kimball)
 - Inspection and repair on previously lined MAS



Reach 4A Upper – Sealed MAS



Structure showing damaged liner



Removed liner



Re-grouted tee riser





Re-lined tee riser



Metal filler used for flange lip

Recommendation

- Receive and file



Questions??

PA 24 COMMITTEE MEMORANDUM NO. 2021.5

DATE: March 2, 2021

TO: Project Agreement 24 Committee
(Inland Empire Brine Line)

SUBJECT: Brine Line Service Contracts | Request for Proposals

PREPARED BY: Carlos Quintero, Operations Manager

RECOMMENDATION

That the Project Agreement 24 Committee direct the General Manager to issue Requests for Proposals (RFPs) for the Inland Empire Brine Line service contracts.

DISCUSSION

SAWPA relies on several outside service providers to perform critical maintenance activities on the Brine Line:

1. *Pipeline cleaning:* Vacuum trucks, water trucks, and traffic control for Brine Line cleaning operations.
2. *Line draining and emergency response:* Tanker trucks for line draining during planned maintenance and emergencies, as well as material support during SSOs.
3. *Debris hauling and disposal:* Removal of dewatering bins and hauling to disposal site.
4. *Pipeline inspection (CCTV):* Line inspection as required per the Brine Line Sewer System Management Plan.
5. *Flow meter calibration:* Annual calibration of discharges flow meters.
6. *Surveying:* On-call surveying services as required.

The Requests for Proposals (RFPs) are issued for a period of 2 years (July 1, 2021 through June 30, 2023) with an option to renew for one additional year (through June 30, 2024).

The current pipeline cleaning Task Order with Downstream Services expires on June 30, 2022. An RFP for pipeline cleaning services will be issued after approval from the PA24 Committee in March 2022.

A schedule for issuing the RFPs and approval of a contract, including an annual cost estimate is presented below. A recommendation will be made to the PA24 Committee to authorize the service contracts exceeding the General Managers authority during the upcoming May 2021 meeting.

These service contracts are issued as an “on-call” basis. Contractor are compensated based on the hourly rate identified in their proposal corresponding to time worked.

Service Contract	Current Provider	PA24 approval RFP	RFP Due Date	PA 24 approval	Cost estimate*
Line draining and emergency response	HazMat Trans.	3/2/2021	4/7/2021	5/4/2021	\$50,000
Debris hauling and disposal	HazMat Trans.	3/2/2021	4/7/2021	5/4/2021	\$20,000
Pipeline inspection (CCTV)	Houston & Harris	3/2/2021	4/7/2021	5/4/2021	\$50,000
Flow meter calibration	Douglas Environmental	3/2/2021	4/7/2021	5/4/2021	\$20,000
Surveying	Calvada	3/2/2021	4/7/2021	5/4/2021	\$15,000

*Estimated cost for FY21-22.

CRITICAL SUCCESS FACTORS

5. Protect and preserve the useful life of Brine Line assets through strategic maintenance, repair, and capital improvements.

8. Operate the Brine Line to: (1) protect the OCSD treatment plant and the environment from non-compliant dischargers, and (2) eliminate any uncontrolled pipeline releases.

RESOURCE IMPACTS

Funds for the Brine Line Service Contracts are included in FY21-22 Fund 240 (Brine Line Enterprise).

Attachments:

1. Requests for Proposals (Cost Proposal Form and Scope of Work ONLY)
2. PowerPoint Presentation

ATTACHMENT A

COST PROPOSAL FORM

**RFP for Brine Line On-Call Line Draining and Emergency Clean-Up Services
SPECIFICATION NO. Brine Line On-Call Line Draining and Emergency Clean-Up Services-2021**

Due Date and Time for Proposal Submittal: April 7, 2021 by 2:00 p.m. Any omissions, additions, substitutions, conditions or alternates in Offeror’s proposal will be considered irregularities and may be cause for rejection of the Offeror’s proposal, no matter how insignificant or immaterial such irregularity may be. Proposals must be completed in ink, indelible pencil or by typewriter. Erasures or “strike-outs” must be initialed by the Service Provider.

The undersigned does hereby propose to provide services in accordance with all provisions of the Request for Proposals including, but not limited, to the Scope of Work, Exhibits, and references for the following price. Incomplete submittal of requested information as called out in the proposal specification requirements may deem the proposal as non-responsive. The cost proposal shall be submitted in separate envelope provided herein. All envelopes shall be clearly marked with the Specification number and envelope content. Please submit unit costs for at least one of the options below. Unit costs shall be valid until June 30, 2023.

DESCRIPTION	QTY ⁽ⁱ⁾	UNIT	UNIT COST	TOTAL
Line Draining (scheduled O&M activities; 5-day response time required)				
Furnish tanker truck(s) with a minimum capacity of 5,000 gallons, including at a minimum 3- and 4-inch hoses and all required fittings, and operator	100	Tanker truck-Hour		
Line Draining (unplanned O&M activities; 1-day response time required)				
Furnish tanker truck(s) with a minimum capacity of 5,000 gallons, including at a minimum 3- and 4-inch hoses and all required fittings, and operator	40	Tanker truck-Hour		
Emergency Clean-Up Services: immediate response required (4 hours; unless otherwise noted)				
Furnish tanker truck(s) with a minimum capacity of 5,000 gallons, including at a minimum 3- and 4-inch hoses and all required fittings, and operator within two (2) hours of notification from SAWPA.	40	Tanker truck-Hour		
Furnish the following equipment for emergency clean-up and to backfill removed soil with imported material:				
Front-end loader (min 3 cy bucket size)	30	Hours		
Front-end loader (min 3 cy bucket size) [STAND-BY]	10	Hours		
Backhoe (min ½ cy bucket size)	30	Hours		

On-Call Line Draining and Emergency Clean-up Services

Backhoe (min ½ cy bucket size) [STAND-BY]	10	Hours		
Skid steer (Bobcat S100 or equivalent w/ standard 50" bucket)	30	Hours		
Skid steer (Bobcat S100 or equivalent w/ standard 50" bucket) [STAND- BY]	10	Hours		
Dump truck (min 10 cy) ⁽ⁱⁱ⁾	30	Hours		
Dump truck (min 10 cy) [STAND- BY] ⁽ⁱⁱ⁾	10	Hours		
Roll-off bins (min 15 cy) ⁽ⁱⁱ⁾	10	Units		
Roll-off bins (min 15 cy) [STAND- BY] ⁽ⁱⁱ⁾	20	Hours		
Roll-off bin truck	30	Hours		
Roll-off bin truck [STAND-BY]	10	Hours		
Roll-off bin liners	10	Units		
Equipment mobilization/demobilization for removal of soil impacted by brine and other required clean-up activities as directed by SAWPA				
Front-end loader (min 3 cy bucket size)	4	L.S.		
Backhoe (min ½ cy bucket size)	4	L.S.		
Skid steer (Bobcat S100 or equivalent w/ standard 50" bucket)	4	L.S.		
Dump truck (min 10 cy) ⁽ⁱⁱ⁾	4	L.S.		
Roll-off bin truck	4	L.S.		
Labor and materials related to spill containment: ⁽ⁱⁱⁱ⁾				
Crew of 2 (certified operators for provided heavy equipment)	40	Hour		
Supervisor	40	Hour		
Visqueen (5' x 100' rolls)	10	Rolls		
Sand bags (100 sandbags per load)	10	Loads		
Spill boom coil (min 6" x 10')	20	Coils		
Spill signs	10	Signs		
Caution tape	1,000	Feet		
Traffic Control				
Set-up/remove traffic control for areas with heavy traffic (complete lane shutdown, minimum of 2 flagmen, cones, barricades, light boards, etc.)	2	L.S.		
Maintain traffic control for areas with heavy traffic (complete lane shutdown, minimum of 2 flagmen, cones, barricades, light boards, etc.)	5	Day		
Set-up/remove traffic control for areas	2	L.S.		

On-Call Line Draining and Emergency Clean-up Services

with light traffic (partial lane closure, cones, barricades, light boards, NO flagmen required, etc.)				
Maintain traffic control for areas with light traffic (partial lane closure, cones, barricades, light boards, NO flagmen required, etc.)	5	Day		
Soil disposal and backfill				
Disposal of soil impacted by brine ^(iv)	80	Ton		
Unclassified backfill material (per Greenbook Standards, latest edition suitable for a minimum compaction of 90 percent, dry weight)	100	Ton		
TOTAL				

- (i) This is an estimate for the number of hours that line draining and emergency services will be required. Contractor will only be paid for work completed. The unit costs listed above will apply if additional quantities are required
- (ii) Smaller trucks/bins can be used if previously approved by OWNER. Amount paid on smaller trucks shall be proportional to the volume of the truck used.
- (iii) Provide price list for all other items which can be provided by Contractor and not listed in this RFP, including labor categories not described above.
- (iv) Cost includes disposal fee charged by the landfill facility.

The enclosed proposal includes the following required submittals:

- (1) Cost Proposal Form (Attachment A)
- (2) Non-Collusion Affidavit (Attachment B)
- (3) Acknowledgement of Insurance Requirements (Attachment C)
- (4) Copies of All Addendum Confirmation Form, if applicable.

_____ Name of Firm	_____ Signature	_____ Date
_____ Address	_____ Authorized Agent (Printed or Typed)	
_____ City, State, Zip Code	_____ E-mail address	
_____ Telephone	_____ Fax	
_____ California License No.	_____ Expiration Date	

ATTACHMENT E
Scope of Work
On-Call Line Draining and Emergency Clean-Up Services

1. Background

The Santa Ana Watershed Project Authority (SAWPA) was formed in 1972 to plan and build facilities to protect water quality in the Santa Ana River Watershed. SAWPA is a Joint Powers Authority (JPA) comprised of five (5) member agencies: Eastern Municipal Water District (EMWD), Inland Empire Utilities Agency (IEUA), Orange County Water District (OCWD), San Bernardino Valley Municipal Water District (SBVMWD), and Western Municipal Water District (WMWD.)

SAWPA owns and operates approximately 73 miles of pipeline referred to as the Inland Empire Brine Line (BRINE LINE). This interceptor conveys brine wastewater consisting of high saline, non-domestic discharges, industrial dischargers, and temporary domestic discharges.

As part of the operation and maintenance of the BRINE LINE, SAWPA requires draining portions of the system. Under some circumstances, SAWPA requires emergency clean-up response services after a Sanitary Sewer Overflow.

2. Scope of Services

The Contractor shall provide all labor, equipment, materials, and incidentals to drain brine wastewater from the BRINE LINE during planned and unplanned operation and maintenance activities, and provide emergency clean-up services during emergencies, such as overflows, line breaks, etc.

The effort identified in Attachment A – Cost Proposal Form is a rough estimate of the services required through June 30, 2023. These services may or may not be needed by SAWPA. The Contractor shall identify any costs deviations if the entirety of the identified services is not required. Similarly, the Contractors shall identify any deviations to the unit prices in case additional quantities are required.

SAWPA will obtain permits and will pay fees as required by the appropriate permitting agency.

The Contractor shall obtain a BRINE LINE permit for liquid waste haulers.

Services under emergency situations shall be provided upon request by SAWPA. Due to the nature of Sanitary Sewer Overflows and the required immediate clean-up, SAWPA requires immediate response from the emergency clean-up services provider. Under no circumstances shall the Contractor take more than 4 hours to respond. Tanker trucks responding to an emergency clean-up request shall not take more than 2 hours to respond.

On-Call Line Draining and Emergency Clean-up Services

The Contractor shall indicate if services cannot be provided within the expected response time.

SAWPA reserves the right to contact other Contractors at its sole discretion.

The Contractor shall provide tanker truck(s) (including operator) with 3- and 4-inch diameter hoses, all fittings. All tanker trucks shall have a minimum capacity of 5,000 gallons. Smaller trucks may be used if previously approved by OWNER and shall be paid at a cost proportional to their volume. The number of tanker trucks required may depend on a variety of factors, such as magnitude of the volume required for draining or magnitude of any brine which overflows from the system. The Contractor shall identify any limitations regarding the number of tanker trucks which can be provided, the response time to assist SAWPA during emergencies, etc.

SAWPA will require tanker trucks with a minimum notice of 5 days for planned operation and maintenance activities. For unplanned operation and maintenance activities, the Contractor shall provide tanker trucks within one day of the request made by the SAWPA.

A list of equipment, including year, make, model, and specifications shall be provided as part of the proposal. All subcontractors shall be identified as part of the proposal.

The following equipment shall be provided, if necessary and requested by SAWPA, during emergency clean-up services: Loader (minimum bucket size of 3 cubic yards), backhoe (minimum bucket size of ½ cubic yard), skid steer (Bobcat S100 or equivalent with standard 50" bucket), dump truck (minimum size of 10 cubic yards), bins (minimum size of 15 cubic yards), roll-off bin truck(s), and other required equipment (including operator, mobilization and demobilization).

The Contractor shall provide spill containment equipment if necessary, such as protective covers (i.e. visqueen), sand bags, barricades, and other materials necessary to contain any sanitary sewer overflows. The Contractor shall provide a materials price list for any materials identified as part of this Scope of Work and any other materials which may aid the Contractor in providing spill containment. The materials price list shall be provided along with other materials submitted as a response to this RFP.

Additionally, when required, the Contractor shall provide traffic control according to the California Work Area Traffic Control Handbook (WATCH Handbook) or Part 6 of the California Manual on Uniform Traffic Control Devices (MUTCD) if required by the appropriate permitting agency. Some instances of traffic control shall be provided in areas with low to moderate traffic which will not require a complete lane shutdown and no flagmen will be required. Other instances will require a complete lane shutdown, including flagmen. Under both traffic control scenarios, the Contractor shall provide all traffic cones, signs, light boards, and barricades.

On-Call Line Draining and Emergency Clean-up Services

SAWPA will provide the Contractor with copies of the permits and the Contractor shall follow all requirements established in such permits.

In case soil clean-up is required, the Contractor shall dispose of the soil which came in contact with the brine to a municipal landfill facility. The Contractor shall be responsible for any testing required by the disposal facility.

If directed by SAWPA, the Contractor shall provide backfill to replace any soil removed from the identified site. The Contractor shall provide dry unclassified fill per the latest version of the Greenbook Standard suitable for a minimum compaction of 90 percent.

Under most circumstances, draining brine from the BRINE LINE will require discharge at SAWPA identified Maintenance Access Structure; however, some specific situations may require addition of chemicals to assist in operation and maintenance of the BRINE LINE. In these cases, disposal of any material removed from the BRINE LINE to an external facility shall be negotiated with the Contractor on a case by case basis depending on the type of material removed and disposed. Under no circumstances will SAWPA pay more than a five (5) percent or \$250 mark-up (whichever is lower) on actual disposal costs to cover administrative costs. SAWPA reserves the right to coordinate directly with the disposal facility to facilitate direct billing from the facility to SAWPA, in which case, no administrative fee will be paid to the Contractor. Transportation costs will be paid according to the unit costs provided in the cost proposal form.

Contractors are encouraged to notify SAWPA in writing, of any apparent major inconsistencies, problems or ambiguities in the Scope of Work. If deemed necessary, SAWPA shall request a meeting to discuss any relevant issues raised by any potential bidder.

**ATTACHMENT A
COST PROPOSAL FORM**

Due Date and Time for Proposal Submittal: April 7, 2021 at 2:00 p.m. Any omissions, additions, substitutions, conditions or alternates in Offeror’s proposal will be considered irregularities and may be cause for rejection of the Offeror’s proposal, no matter how insignificant or immaterial such irregularity may be. Proposals must be completed in ink, indelible pencil or by typewriter. Erasures or “strike-outs” must be initialed by the Service Provider.

The undersigned does hereby propose to provide services in accordance with all provisions of the Request for Proposals including, but not limited, to the Scope of Work, Exhibits, and references for the following price. The Offeror may elect to provide bids for any of the tasks presented below; OWNER shall consider awarding specific tasks to one or more Offerors. All envelopes shall be clearly marked with the Specification number and envelope content. Submit total Contract amount not to exceed, as follows:

DESCRIPTION	QTY	UNIT	UNIT COST	TOTAL
3. Debris Hauling				
a. Price to provide one dewatering bin , ramp, and spill protection cover at Colton Wastewater Treatment Plant in Colton, CA, including set-up. Size: ____ cubic yards (Minimum Size 15 cubic yards)	1	Each		
b. Price to provide additional dewatering bins , ramp, and spill protection cover at Colton Wastewater Treatment Plant in Colton, CA, including set-up as requested by OWNER	1	Each		
c. Price to remove roll-off dewatering bin to a disposal site from Colton Wastewater Treatment Plant in Colton, CA	2	Each		
d. Price to provide one roll-off standard bin, ramp, and spill protection cover, including plastic liner(s) at Colton Wastewater Treatment Plant in Colton, CA, including set-up. Size: ____ cubic yards (Minimum Size 15 cubic yards)	1	Each		
e. Price to provide additional roll-off standard bins, ramp, and spill protection cover, including plastic liner(s) at Colton Wastewater Treatment Plant in Colton, CA, including set-up as requested by OWNER.	17	Each		

On-Call Debris Hauling and Disposal

f. Price to remove roll-off standard bin to a disposal site from Colton Wastewater Treatment Plant in Colton, CA, including solids thickening to allow for proper disposal at a local landfill.	18	Each		
g. Price to provide one dewatering bin , ramp, and spill protection cover at IEUA RP-2 in Chino, CA. Size: ____ cubic yards (Minimum Size 15 cubic yards)	1	Each		
h. Price to provide additional dewatering bins , ramp, and spill protection cover at IEUA RP-2 in Chino, CA, including set-up as requested by OWNER	1	Each		
i. Price to remove dewatering bin to a disposal site from IEUA RP-2 in Chino, CA	2	Each		
j. Price to provide one dewatering bin , ramp, and spill protection cover at Reach 4B Temescal Channel Access Road in Corona, CA Size: ____ cubic yards (Minimum Size 15 cubic yards)	1	Each		
k. Price to provide additional dewatering bins, ramp, and spill protection cover at Reach 4B Temescal Channel Access Road in Corona, CA, including set-up as requested by OWNER	2	Each		
l. Price to remove dewatering bin to a disposal site from Reach 4B Temescal Channel Access Road in Corona, CA.	3	Each		
Total for Debris Hauling				
GRAND TOTAL				

1. Debris Hauling

TOTAL (In Words): _____

GRAND TOTAL (In Words): _____

The enclosed proposal includes the following required submittals.

- (1) Cost Proposal Form (Attachment A)
- (2) Non-Collusion Affidavit (Attachment B)
- (3) Acknowledgement of Insurance Requirements (Attachment C)
- (4) Copies of All Addendum Confirmation Form, if applicable.

On-Call Debris Hauling and Disposal

Name of Firm

Signature

Date

Address

Authorized Agent (Printed or Typed)

City, State, Zip Code

E-mail address

Telephone

Fax

California License No.

Expiration Date

**ATTACHMENT E
SCOPE OF SERVICES**

PART 1: GENERAL

1.01 DEFINITIONS

- A. The following definitions shall apply to this technical specification for Debris Hauling and Disposal:
1. “OWNER”: Santa Ana Watershed Project Authority (SAWPA).
 2. “CONTRACTOR”: Service Provider awarded the work under this contract.
 3. “Debris”: Pipeline debris is described as, but not limited to, sludge, dirt, sand, rocks, grease, roots, and other solid or semisolid materials.
 4. “Maintenance Access Structure”: When used to describe an access way to the sewer system or a starting/finishing location for line cleaning and inspections, the term “Maintenance Access Structure” should be construed as any access port to the sewer system. Maintenance Access Structures are also referred to as “Maintenance Access Structures (MAS).”
 5. “Segment”: When used to describe a section of the sewer line, the term “segment” should be construed as that portion of the sewer pipe between two Maintenance Access Structures (access ports).
 6. “Brine Line”: Inland Empire Brine Line owned and operated by OWNER within San Bernardino and Riverside Counties, contains saline wastes and domestic wastewater.

1.02 APPENDICES / FIGURES

- a. None

1.03 SCOPE OF WORK

A. GENERAL

- a. *Debris Hauling.* The CONTRACTOR shall provide roll-off dewatering bins and/or standard roll-off bins fitted with a plastic liner and necessary ramps at an OWNER identified location and shall remove the dewatering bins for disposal at a legal disposal site. In addition, the CONTRACTOR shall provide assistance with solids thickening in order to allow proper disposal at a local landfill. Solids thickening can be performed with the addition of a thickening agent, such as sawdust, or polymer material. Solids thickening will usually require the use of heavy equipment used to mix the contents removed from the Brine Line with the thickening material. A staging area for materials and equipment will be provided by OWNER.

The duration of this contract shall be through June 30, 2020, with an option for a one-year extension (through June 30, 2021).

B. BIN DELIVERY AND DEBRIS HAULING

- a. CONTRACTORS shall provide roll-off dewatering bins and fabric liners with appropriate fitting and piping to dewater back to a designated Brine Line Maintenance Access Structure as requested by OWNER. Each bin shall have a minimum size of 15 cubic yards.
- b. The bins shall be delivered to an OWNER identified site (Colton Wastewater Treatment Plant or Inland Empire Utilities Agency RP-2 Facility) and shall be removed for disposal to a legal disposal site upon OWNER authorization.
- c. In addition, the CONTRACTOR shall provide the necessary ramp to allow for solids disposal from the cleaning equipment. Under no circumstances shall the ramp be left in an area where it interferes with established vehicle routes.
- d. The CONTRACTOR shall also prevent any spills during bin hauling or transport. A tarp or other protective cover shall be placed under the bin to contain any potential spills during loading to a roll-off bin truck. **The CONTRACTOR shall be responsible for any clean-up costs associated with a spill during full bin removal if a protective cover is not used.**
- e. The CONTRACTOR shall provide specifications for the bins proposed as part of this task. Similarly, the CONTRACTOR shall provide photographs of the ramp proposed as part of this task.

C. MATERIAL DISPOSAL

- a. All debris resulting from the cleaning operations shall be removed from the work site and disposed of at a legal disposal site. OWNER will reimburse CONTRACTOR for exact tipping fees charged.
- b. All debris removed shall be deposited into suitable water-tight dewatering roll-off bins or standard roll-off bins lined with a plastic liner to prevent any spills during staging and/or transport. Exact type of dewatering bin used shall be indicated by OWNER. For dewatering bins, liquid shall be allowed to drain back to a designated Brine Line Maintenance Access Structure. OWNER will provide preparation of Brine Line Maintenance Access Structure for draining. CONTRACTOR shall not modify any Brine Line Maintenance Access Structure for draining. OWNER will provide at least one (1) designated areas for staging dewatering roll-off bins and dewatering back to the Brine Line. CONTRACTOR shall not contact the

On-Call Debris Hauling and Disposal

City of Colton to obtain access to the designated area for staging roll-off bins prior to AWARD. OWNER will provide a date and time for a site visit at the location identified below prior to submittal of proposals. CONTRACTOR shall, at a minimum, wear hard hat, safety vest, and safety glasses at all times.

1. City of Colton Wastewater Treatment Plant, 1201 S. Rancho Avenue, Colton, California.
2. Inland Empire Utilities Agency Regional Plant No. 2 (RP-2), 16400 El Prado Road, Chino, California.
3. Adjacent (along Temescal Channel Access Road) to the City of Corona Water Reclamation Facility No. 2, 650 E. Harrison Avenue, Corona, California.

CONTRACTOR shall prevent entry of stormwater into the bins and into the Brine Line Maintenance Access Structure.

- c. CONTRACTOR shall allow dewatering of the roll-off bins for a minimum of three (3) days. If the CONTRACTOR desires to dewater the roll-off bins for a longer period of time, prior authorization from the OWNER is required.
- d. Standard roll-off bins shall be removed once the solids have been properly thickened to allow for proper disposal at the nearest landfill. OWNER will not be responsible for any additional costs if the landfill rejects the bin contents due to improper thickening.
- e. OWNER will provide a staging area for thickening materials, such as sawdust, and necessary equipment for thickening.
- f. CONTRACTOR shall obtain approval from OWNER representative prior to removing bins.
- g. Any sampling/profiling required by the disposal site, will be reimbursed by OWNER.

Chain of custody forms, weigh tickets, summary of amounts and disposal dates shall be reported to OWNER no later than 10 days after debris has been hauled to the identified disposal site.

1.04 SUBMITTALS

The CONTRACTOR shall submit the following to the OWNER:

- A. Submittals:** Work shall not be assigned until the following have been received, reviewed, and approved by the OWNER where noted.

On-Call Debris Hauling and Disposal

1. A detailed Health, Safety, and Emergency Response Plan for the work to be completed. The plan shall include, at a minimum, specific procedures to be followed in the event of an emergency and contact and location information for local fire, police, and medical services. The contents of this Plan are exclusively the responsibility of the CONTRACTOR and the Plan will not be reviewed and approved by the OWNER. The CONTRACTOR shall submit a copy to the OWNER for informational purposes.
2. A Spill Response Plan is required outlining the CONTRACTOR actions and responsibilities in case of a system overflow. The OWNER will review and approve the CONTRACTOR spill response plan prior to commencing work. The Spill Response Plan shall identify procedures in case of any spill or if the CONTRACTOR were to lose equipment or any other object inside of the BRINE LINE system.
3. A description, including the manufacturer's specifications, for all components of the debris hauling equipment, as applicable.
4. A listing of the proposed disposal site(s), as applicable.

1.05 PROJECT DESCRIPTION, REQUIREMENTS, AND CONDITIONS

- A. In the event of a sewer overflow, interruption, or contamination caused by CONTRACTOR's actions, CONTRACTOR shall immediately notify OWNER and shall contain overflow and/or contamination. CONTRACTOR shall be responsible for any fines levied by others, reimbursement of any OWNER-incurred costs, damage, cleanup, restoration of flow, and any disruption of service costs. CONTRACTOR shall also notify OWNER immediately of any observed non-CONTRACTOR related spills and/or any abnormal conditions.

1.06 MEASUREMENT AND PAYMENT

- A. CONTRACTOR shall be paid based on the actual work performed in accordance with the unit rate schedule provided on CONTRACTOR's Bid Form. OWNER will not pay for travel time to and from the work site.
- B. Final payment will be authorized upon receipt of a complete and correct final invoice, submittal of all materials and successful completion of services described herein.

**ATTACHMENT A - COST PROPOSAL FORM
RFP for Brine Line On Call CCTV Inspection Services
SPECIFICATION NO. BRINE LINE ON-CALL CCTV INSPECTION-2021**

Due Date and Time for Proposal Submittal: April 7, 2021 at 2:00 p.m. Any omissions, additions, substitutions, conditions or alternates in Offeror’s proposal will be considered irregularities and may be cause for rejection of the Offeror’s proposal, no matter how insignificant or immaterial such irregularity may be. Proposals must be completed in ink, indelible pencil or by typewriter. Erasures or “strike-outs” must be initialed by the Service Provider.

The undersigned does hereby propose to provide services in accordance with all provisions of the Request for Proposals including, but not limited, to the Scope of Work, Exhibits, and references for the following price. Incomplete submittal of requested information as called out in the proposal specification requirements may deem the proposal as non-responsive. The cost proposal shall be submitted in separate envelope provided herein. All envelopes shall be clearly marked with the Specification number and envelope content. Submit total Contract amount not to exceed, as follows:

DESCRIPTION	QTY	UNIT	UNIT COST	TOTAL
CCTV Inspection				
Inspection 15-, 16-, and 18-inch sewer	24,000	LF		
Inspection 24-, and 26-inch sewer	10,000	LF		
Inspection 27- and 30-inch sewer	30,000	LF		
Inspection 36- and 39-inch sewer	10,000	LF		
Inspection 42-inch sewer	35,000	LF		
Inspection 48-inch sewer	5,000	LF		
Surcharge for emergency call out (2-hour response)	2	L.S		
TOTAL				

TOTAL (In Words): _____

On-Call Pipeline Inspection (CCTV) Services

The enclosed proposal includes the following required submittals.

- (1) Cost Proposal Form (Attachment A)
- (2) Non-Collusion Affidavit (Attachment B)
- (3) Acknowledgement of Insurance Requirements (Attachment C)
- (4) Copies of All Addendum Confirmation Form, if applicable.

_____ Name of Firm	_____ Signature	_____ Date
_____ Address	_____ Authorized Agent (Printed or Typed)	
_____ City, State, Zip Code	_____ E-mail address	
_____ Telephone	_____ Fax	
_____ California License No.	_____ Expiration Date	

ATTACHMENT E
SCOPE OF SERVICES
CCTV Inspection Services

PART 1: GENERAL

1.01 DEFINITIONS

- A. The following definitions shall apply to this technical specification for CCTV Inspection Services:
1. “OWNER”: Santa Ana Watershed Project Authority (SAWPA.)
 2. “CCTV”: Closed-circuit Television
 3. “CONTRACTOR”: Service Provider awarded the work under this contract.
 4. “Maintenance Access Structure”: When used to describe an access way to the sewer system or a starting/finishing location for line inspection, the term “Maintenance Access Structure” should be construed as any access port to the sewer system.
 5. “Segment”: When used to describe a section of the sewer line, the term “segment” should be construed as that portion of the sewer pipe between two Maintenance Access Structures (access ports.)
 6. “BRINE LINE”: Inland Empire Brine Line owned and operated by OWNER within San Bernardino and Riverside Counties, contains saline wastes and domestic wastewater (Figure 1.)
 7. “NASSCO”: National Association of Sewer Service Companies.

1.02 APPENDICES / FIGURES

- a. Appendix A. BRINE LINE System Figure

1.03 SCOPE OF WORK

A. GENERAL

- a. CONTRACTOR shall furnish all labor, materials, equipment, and incidentals necessary for the inspection of approximately 114,000 lf of the BRINE LINE described herein.
- b. Services shall be provided by CONTRACTOR no later than 10 days after requested by OWNER. Under emergencies, CONTRACTOR shall provide CCTV services within 2 hours after requested by OWNER. The surcharge for emergency services (2-hour response required) shall be identified as part of the Cost Proposal.

BRINE LINE pipelines are RCPP, PVC-lined RCP, PVC, HDPE, vitrified clay, and ductile iron, and range in sizes from 16- to 48-inches in diameter

On-Call Pipeline Inspection (CCTV) Services

(see map). The inspection services shall be provided as requested by OWNER.

B. PERMITS AND TRAFFIC CONTROL

- a. OWNER shall provide traffic control in support of CCTV operations.

C. CCTV INSPECTION

- a. Electronic digital recordings shall be made of the CCTV inspections and copies of both the recordings and inspection reports shall be supplied to OWNER. Format of copies to be provided to OWNER is specified in Section 1.04 C below.
- b. CCTV Camera Head Prime Position: Wherever prevailing conditions allow, the CCTV camera head shall be positioned to reduce the risk of picture distortion. The CCTV camera lens head shall be positioned centrally (i.e. in prime position) within the sewer. The camera lens shall be positioned looking along the axis of the pipeline. A position tolerance of $\pm 10\%$ of the vertical pipeline dimension shall be allowed when the camera is positioned centrally.
- c. CCTV Camera Head Speed: The speed of the CCTV camera in the pipeline shall be limited to 8 inches per second (40 feet/minute) for inspections to enable all detail to be extracted from the CD-ROM/DVD recording. Similar or slightly higher speed as agreed by the OWNER shall be provided for inspections.

1.04 SUBMITTALS

The CONTRACTOR shall submit the following, if requested by OWNER:

- A. Pre-Inspection Submittals:** Inspection operations shall not commence until the following have been received, reviewed, and approved by the OWNER where noted.
 1. A description, including the manufacturer's specifications, for all CCTV equipment.
 2. A description of the traffic control plan for the temporary closing of streets or traffic lanes and rerouting of traffic. The traffic control plan shall include the anticipated length of time that each specific street will have traffic disruptions, and shall conform to the regulations and standards in effect for the affected jurisdiction and Caltrans. Final scheduling shall be coordinated with the affected

On-Call Pipeline Inspection (CCTV) Services

jurisdiction for the purpose of defining street detours, closings and interruptions of service for mass transit. OWNER will obtain and pay for all permits.

B. Progress Submittals: The CONTRACTOR shall submit a report no later than seven (7) days after CCTV inspection took place according to the following provisions:

1. Progress Report / Work Documentation: Progress reports shall be submitted for OWNER review no later than seven (7) days after the inspection took place. CONTRACTOR's log sheets, with a section by section breakdown including comments, shall be maintained on site, in a legible manner for review at all times. Comments on log sheets shall include notice of badly work Maintenance Access Structure frames and covers, and badly deteriorated Maintenance Access Structure concrete structures.
2. All CCTV inspection footage shall be submitted on CD-ROM/DVD.
3. All reports shall be provided in electronic format (PDF version.)
4. Summary table (in MS Excel Office 365, MS Word Office 365, or later format) listing sewer segments cleaned (using unique numbering system to be provided by the OWNER), location, unique inspection DVD tracking number, and any relevant notes.
5. All CCTV inspection footage/video clips (with audio) in MPEG-1 (DVD-quality) format. Files shall be named using a unique naming/numbering system to be provided by OWNER.
6. Each CD-ROM or DVD shall be labeled as discussed in Section 3.03 B.
7. To be submitted on encoded DVD or flash drive playable by any North American computer-based DVD player (using WinDVD or similar computer software) or standard television-based video system DVD player:
 - a. All CCTV inspection footage/video clips (with audio) (see C.1.c. above) converted to playable encoded DVDs.
 - b. Each DVD shall be labeled as discussed in Section 3.03 B.

1.05 QUALITY ASSURANCE / TRAINING REQUIREMENTS

- A. Qualifications of the Inspection Crew Supervisor shall have five years minimum experience.
- B. OWNER reserves the right to approve personnel used and to request new personnel if the personnel used is not performing to the satisfaction of OWNER.
- C. CONTRACTOR shall utilize a commercial-off-the-shelf (COTS) CCTV data collection/inspection software package furnished by a single manufacturer who is fully experienced, reputable and qualified in the manufacture of the equipment to be furnished.

On-Call Pipeline Inspection (CCTV) Services

- D. CONTRACTOR's employees responsible for data collection and preparation of the final inspection report shall each have a minimum CCTV inspection experience level of 5-years and have experience spanning the full operational capabilities of the software package. Evidence of experience shall be provided to OWNER in advance of the work for each person operating the inspection equipment and preparing the final inspection reports.
- E. The methodology of evaluation, data collection, and reporting criteria shall be based upon the latest edition of the NASSCO guidance for all CCTV inspections under this contract.
- F. All inspection equipment technicians and operators shall have been trained and certified to assess the conditions of the sewers according to the NASSCO guidelines. Training of personnel shall be through the Pipeline Assessment and Certification Program (PACP). Proper evidence of certification shall be provided to the OWNER in advance of the work for each person assessing the sewers and operating the inspection equipment.

1.06 PROJECT DESCRIPTION, REQUIREMENTS, AND CONDITIONS

The Inland Empire Brine Line (BRINE LINE) sewer line segments and appurtenances to be cleaned and inspected (unless noted otherwise) under this contract include portions of the BRINE LINE Reaches IV, IV-A, IV-B, IV-D, and IV-E.

- A. Maintenance Access Structures along the segments to be inspected may be non-standard, bolted closed, or may require cleaning for access. Maintenance Access Structures may be located in native terrain areas subject to seasonal flooding or sandy soil conditions or in streets, shoulders or other paved areas. As such, accessing such Maintenance Access Structures will require special consideration and coordination with OWNER. CONTRACTOR shall field verify all conditions and anticipate any increased coordination and setup time for inspection operations prior to submitting bid.
- B. Maintenance Access Structures along the segments to be inspected may be located in high vehicle traffic areas. As such, accessing these Maintenance Access Structures may require special consideration, coordination, and compliance with the requirements of Caltrans, Riverside County Flood Control District, Riverside County Department of Transportation, San Bernardino County Flood Control District, San Bernardino Department of Transportation, City of Corona, City of Colton, City of Rialto, City of Riverside, City of San Bernardino, and any affected jurisdictions. CONTRACTOR shall field verify all conditions and anticipate any increased coordination and set-up time for inspection operations prior to submitting bid.

On-Call Pipeline Inspection (CCTV) Services

- C. All work performed and equipment utilized by CONTRACTOR shall conform to FED-OSHA and CAL-OSHA Title 8 requirements, including, but not limited to, work performed in confined spaces. CONTRACTOR shall provide a minimum of a two-person crew at all times.
- D. CONTRACTOR shall be responsible for managing and controlling traffic in a safe manner at all times, including, but not limited to, reconnaissance, land survey, and CCTV inspection activities.
- E. CONTRACTOR shall provide necessary equipment to meet local noise restrictions.
- F. In the event of a sewer overflow, interruption, or contamination caused by CONTRACTOR's actions, CONTRACTOR shall immediately notify OWNER and shall contain overflow and/or contamination. CONTRACTOR shall be responsible for any fines levied by others, reimbursement of any OWNER-incurred costs, damage, cleanup, restoration of flow, and any disruption of service costs. CONTRACTOR shall also notify OWNER immediately of any observed non-CONTRACTOR related spills and/or any abnormal conditions.

1.07 MEASUREMENT AND PAYMENT

- A. CONTRACTOR shall be paid based on the actual work performed in accordance with the unit rate schedule provided on CONTRACTOR's Bid Form. Services under this agreement shall be as requested and needed. OWNER will not be obligated to any minimum or maximum quantities under the agreement.
- B. CONTRACTOR shall submit all inspection reports and supporting documentation and data with an itemized invoice.
- C. All CCTV data shall be provided in accordance to the specifications of this Scope of Work. Failure to abide by the stipulations in this Scope of Work or any of the Terms and Conditions of the agreement could result in non-payment and might require re-inspection by the CONTRACTOR prior to approval of any invoices.

PART 2: CCTV PRODUCTS

VIDEO INSPECTION EQUIPMENT

- A. CONTRACTOR shall furnish the inspection studio, television cameras, video capture equipment, data collection/inspection software, and any other necessary equipment, materials, electricity, labor and technicians as may be required to perform the inspections.

On-Call Pipeline Inspection (CCTV) Services

- B. **The inspection equipment shall be capable of inspecting up to 2,000 feet in one direction by a self-propelled unit.** The equipment package shall be able to provide a picture of acceptable quality at this maximum length, regardless of the vibration caused by normal movement of the camera within the pipe and the distance length of the conductor cable between the cameras and the recording device. If necessary, longer runs of pipe may be inspected by completing separate portions from Maintenance Access Structures at either end of the segment.
- C. The inspection equipment shall be capable of clearly televising the interior of sewer pipes from 16- to 48-inches in diameter.
- D. When the television equipment is towed by winch and bind through the sewer line, all winches shall be stable with either locking or ratcheting drums. All winches shall be inherently stable under loaded conditions. The binds shall be or of an equally non-elastic material to ensure the smooth and steady progress of the camera equipment. The binds shall be oriented as to enable unhindered extension or retraction through the sewer conduit. All effort shall be made to prevent damage to the sewer conduit during the television inspection. In the case where damage is caused by the CONTRACTOR, for any reason, such as would be caused by incorrect deployment of binds or retrieval of lodged equipment, the cost of repair or remedy shall be absorbed by the CONTRACTOR and shall be considered an incidental part of the work and no separate measurement or payment shall be made.
- E. The television camera used for the sewer line inspection shall be specifically designed and constructed for sewer pipeline inspection, and provide a clear, noise-free image. The camera shall be operative in any conditions that may be encountered in the inspection environment including, but not limited to, 100 percent humidity conditions. The camera shall have a high-resolution lens and be capable of pan and tilt movements (360 x 270-degree minimum rotation) to facilitate the inspection of sewer line and Maintenance Access Structure defects. Focal distance shall be adjustable and shall range from 1-inch to infinity. The illumination shall be such as to allow an even distribution of light to produce a clear picture around the sewer perimeter, regardless of diameter and without the loss of contrast, flare out of picture or shadowing. The lighting system shall also minimize reflective glare and the intensity shall be fully adjustable. The television camera, monitor and other components of the video system shall be capable of producing a picture having not less than 650 lines of resolution.
- F. The camera shall be skid-mounted or mounted on track or wheeled equipment, as appropriate, to accommodate specific pipe diameters, construction, and liner types. The camera equipment shall be capable of traversing reasonable amounts of debris and flow encountered in the sewer while providing a stable, clear image. Acceptable flow depths are summarized in Paragraph 3.03.

On-Call Pipeline Inspection (CCTV) Services

- G. CONTRACTOR shall test the television inspection equipment one time per week to verify the picture quality. Recorded footage showing inadequate or improper lighting or other poor image quality shall be cause for rejection and non-payment by OWNER.
- H. The CCTV monitor display shall incorporate an automatically updated record in feet and tenths of a foot of the distance along the line from the cable calibration point to the center point of the camera.

DATA COLLECTION / INSPECTION SOFTWARE

A. Logging and Reporting

1. CONTRACTOR shall collect all CCTV inspection data using an Open Database Connectivity (ODBC) compliant database format. Data shall be delivered to OWNER in approved formats per Sections 1.04 and 1.05. CONTRACTOR shall provide documentation of any additional data fields used during the inspection to satisfy the minimum data requirements of Paragraph 2.02 (A)(6). File names of database files, JPEG files, and MPEGs shall use a logical sequence which utilizes BRINE LINE reach number, Maintenance Access Structure numbers, and/or pipeline segment numbers in the filename to allow for quick recognition of location based on file name. Naming conventions shall be standardized and coordinated with OWNER prior to beginning CCTV work.
2. Each segment of pipe inspected shall be identified by a starting and ending Maintenance Access Structure number as indicated by OWNER prior to the CCTV inspection. As such, each segment of pipe shall be tracked as starting identification number to ending identification number. In the event that an additional access point is used by CONTRACTOR, such point shall be identified by CONTRACTOR using the same numbering convention. The locations of all additional or non-located access points shall be noted and provided to OWNER.
3. The software package shall include provisions for collecting information specific to Maintenance Access Structures and all other sewer access points.
4. The software shall be pre-programmed with the pipeline defect conditions described in the NASSCO guidance, and shall be flexible enough to allow customization by OWNER.
5. The footage reading from the camera equipment shall be automatically entered into the survey log and shall directly correspond to the noted defect location throughout the pipe when graphic and tabular reports generated.
6. All relevant pipe segment information shall be entered prior to the actual survey. The below listed minimum survey detail must be supplied in the software for proper segment documentation. The graphic and tabular survey reports generated

On-Call Pipeline Inspection (CCTV) Services

shall include the below listed information as well as Maintenance Access Structure inspection observations, pipe centerline footage count, condition grade and defect description, defect location reference including clock description, severity and special remarks:

- a. SAWPA Contract Name
 - b. SAWPA Contract Number
 - c. CONTRACTOR Name
 - d. CONTRACTOR's Operator Name
 - e. Inspection or Survey Date
 - f. Inspection Start Time
 - g. Sewer Pre-cleaned prior to inspection? Y/N
 - h. Ambient weather conditions
 - i. Starting Maintenance Access Structure identification no.
 - j. Ending Maintenance Access Structure identification no.
 - k. Starting Maintenance Access Structure depth (rim to invert) and/or structure dimensions (field verified)
 - l. Ending Maintenance Access Structure depth (rim to invert) and/or structure dimensions (field verified)
 - m. Direction of survey (upstream / downstream)
 - n. Pipe shape
 - o. Pipe diameter and/or height and width
 - p. Pipe construction material
 - q. Pipe liner material
 - r. Pipe joint lengths
 - s. Pipe total segment length (field verified)
 - t. Pipe drop (total invert elevation change from starting to ending Maintenance Access Structure)
 - u. Pipe slope (average based on total invert elevation change)
 - v. Pipe flow in (percent of pipe height at segment starting point)
 - w. Pipe flow out (percent of pipe height at segment ending point)
 - x. Total surveyed length in segment
 - y. CD-ROM/DVD number
7. The graphical reports shall print in color for quick glance referencing of the defect category.
 8. The software shall be capable of compiling data from multiple inspections, sorting the data based on a user defined description field, and providing the data in brief summary reports.
 9. Contractor shall provide to SAWPA, at no additional cost, any (viewing) software required to view deliverables for inspection using the 3D Optical Pipeline Scanner.

B. Digital Video System

On-Call Pipeline Inspection (CCTV) Services

1. The software package shall allow the video surveys to be recorded as digital MPEG files (see Section 1.04 C). The MPEG files shall have indexes to the defect observations saved as a time reference. One MPEG file shall be provided for each Maintenance Access Structure-to-Maintenance Access Structure pipe segment. MPEG compression shall not significantly degrade the still frame quality of the video signal from the original source video.
2. Non-digital media will not be accepted. CONTRACTOR shall re-inspect the requested segments if any of the digital recording equipment fails during the inspection.
3. The software package shall include video image capture capabilities. The software shall be capable of capturing multiple color video frames of the defects found during inspection and attaching these images to the inspection reports. CONTRACTOR shall be required to take video frame snapshots of all defects.
4. The image capture system shall be capable of recording multiple video clips of an observation of between 5 and 20 seconds in duration. CONTRACTOR shall be required to record video clips of continuous structural defects, such as longitudinal cracks, with a grade rating to show the magnitude of the defect, or of service defects, such as infiltration, to show the degree of the defects.
5. Footage count and elapsed time shall be captured on the corresponding video image and shall appear on the reports indicating the elapsed time and correct centerline footage measurements of when the image was captured during inspection.
6. Defect images in the reports shall appear in a highlighted color, based on the nature of the defect, on both the computer monitor and on the printed reports.
7. The CONTRACTOR shall provide the OWNER with any codecs or special software, if required, to play the CCTV videos. All CCTV videos shall be compatible with standard multimedia players (i.e. Windows Media Player, Quicktime, etc.)
8. The CONTRACTOR shall be able to provide a digital copy of the recorded footage on the field, soon after inspection.

PART 3: CCTV EXECUTION

3.01 EVALUATION CRITERIA

On-Call Pipeline Inspection (CCTV) Services

- A. Sewer condition grades for all CCTV evaluations in this contract shall be based upon the condition grade schedule presented in the latest edition of the NASSCO guidance, unless otherwise specified/customized by OWNER.
- B. The worst defect along the individual sewer segment shall be used to give a single condition grade for that particular sewer segment; i.e., the grade for the sewer segment is based on the worst internal condition grade along the sewer segment.
- C. It shall be the responsibility of the CONTRACTOR to ensure that defects are reported uniformly and consistently by all inspection crews.

3.02 PROCEDURE

- A. Prior to opening Maintenance Access Structure covers or other access points, the atmosphere of the access point shall be checked by CONTRACTOR to ensure a non-explosive and non-hazardous atmosphere. The portable gas detection equipment shall measure and alarm the following hazardous gasses: hydrogen sulfide, carbon monoxide, methane, and low oxygen. CONTRACTOR shall ventilate all access points as required for the safe execution of the work in this contract. CONTRACTOR shall ensure that at no time the ventilation be the cause of public nuisance odor problems.
- B. Many of the Maintenance Access Structures along the segments to be inspected under this contract have not been opened for extended periods and, therefore, may be surcharged. As such, CONTRACTOR shall exercise caution when accessing all Maintenance Access Structures.
- C. The camera shall be moved through the sewer segment at a uniform rate, stopping when necessary to ensure proper documentation of the sewer's condition, or to "image capture" defects. With the exception of a 3D Optical Pipeline Scanner unit, at no time shall the television camera be pulled at a speed greater than 40 feet per minute. Manual winches, power winches, TV cable and powered rewinds or other devices that do not obstruct the camera view or interfere with proper documentation of the sewer conditions shall be used to move the camera through the sewer line.
- D. The camera shall be stopped to inspect any areas of concern by using the pan and tilt feature of the television camera. For the purposes of this technical specification, an "area of concern" shall be considered as any one of the following:
 - 1. Locations of structural damage to the piping, Maintenance Access Structures and other appurtenant structures, including sagging, cracked or collapsed segments.
 - 2. Locations of PVC liner or weld strip defects.

On-Call Pipeline Inspection (CCTV) Services

3. Joints which appear to be damaged, incorrectly installed, shifted, or in any way deficient.
 4. Areas in which noticeable infiltration is occurring. The approximate flow into the pipe at these locations shall be recorded as a field observation.
 5. Unusual or deficient conditions such as roots, storm sewer connections, and the presence of vermin, scale, corrosion, grease and grit.
 6. Any other discernible feature or condition which, in the opinion of CONTRACTOR or OWNER, may pose a problem to the integrity or functionality of the sewer.
- E. Whenever possible, CONTRACTOR shall complete the inspection of a pipe segment in one continuous run. CONTRACTOR shall complete each sewer segment in its entirety before stopping work for the day. No partial segment of sewer inspection shall be permitted.
- F. CONTRACTOR shall provide a minimum of four video frame snapshots per segment of pipeline between Maintenance Access Structures regardless of the condition of the pipeline segment.
- G. All formatted data, video and corresponding reports shall be submitted on CD-ROM or DVD to the OWNER no later than seven (7) days after CCTV inspection took place. All CD-ROMs/DVDs shall become the property of the OWNER once submitted.

3.03 CCTV PERFORMANCE

- A. Color CCTV. All CCTV work shall use color CCTV reproduction.
- B. CCTV Picture Quality. An approved test device shall be provided and be available on site throughout the Contract, enabling the tests specified in this clause to be checked. The test card shall be Marconi Regulation Chart No. 1 or its derivatives with a color bar, clearly differentiating between colors, with no tinting, to show the following: 1) white; 2) yellow; 3) cyan; 4) green; 5) magenta; 6) red; 7) blue; 8) black.
- C. At the start of each and every working shift, the camera shall be positioned centrally and at right angles to the test card at a distance where the full test card just fills the monitor screen. The CONTRACTOR shall ensure that the edges of the test card castellations coincide with the edges of the horizontal and vertical scan (raster). The card shall be illuminated evenly and uniformly without any reflection. The type of camera used is to be identified in the test recording. The recording must show the camera being introduced into the test device and reaching its stop position. Other test devices may be used subject to approval by OWNER.

On-Call Pipeline Inspection (CCTV) Services

- D. The electronic systems, television camera and monitor shall be of such quality as to enable the following to be achieved:
- a. Shades of Gray. The gray scale shall show equal changes in brightness ranging from black to white with a minimum of five clearly recognizable stages.
 - b. Color. With the monitor adjusted for correct saturation, the six colors plus black and white shall be clearly resolved with the primary and complementary colors in order of decreasing luminance. The gray scale shall appear in contrasting shades of gray with no tint.
 - c. Linearity. The background grid shall show squares of equal size, without convergence/divergence over the whole of picture. The center circle shall appear round and have the correct height/width relationship ($\pm 5\%$).
 - d. Resolution. The live picture must be clearly visible with no interference and capable of registering a minimum number of TV lines/pictures height lines. The resolution shall be checked with the monitor color turned down. In the case of tube cameras this shall be 600 lines.
 - e. Color Constancy. To ensure the camera shall provide similar results when used with its own illumination source, the lighting shall be fixed in intensity prior to commencing the inspection. In order to ensure color constancy, generally no variation in illumination shall take place during the inspection.
 - f. The CONTRACTOR shall note that OWNER may periodically check both the live and video picture consistency against the color bar. Any differences shall require re-inspect of the new length or lengths affected, at the CONTRACTOR's expense.
- E. CD-ROM Playback. CD-ROM playback shall be capable of a resolution of a minimum of 250 lines recorded at standard speed.
- F. CCTV Focus/Iris/Illumination. The adjustment of focus and iris shall allow optimum picture quality to be achieved and shall be remotely operated. The adjustment of focus and iris shall provide a minimum focal range from 6 inches in front of the camera's lens to infinity. The distance along the sewer in focus from the initial point of observation shall be a minimum of twice the vertical height of the sewer. The illumination must be such as to allow an even distribution of the light around the sewer perimeter without the loss of contrast, flare out of picture or shadowing.

3.05 FORMATTING

- A. Video
- 1. At the start of each segment, a data generator shall electronically generate and clearly display on the viewing monitor and video recording a record of data in alphanumerical form containing the following minimum information:

On-Call Pipeline Inspection (CCTV) Services

- a. Automatic update of the camera's position, in feet and tenths, in the sewer line from adjusted zero. The distance reading entered on to the data display at the cable calibration point must allow for the distance from the start of the survey to the cable calibration point such that the footage at the start of the survey is zero.
 - b. Size and length of sewer line, type of material sewer line is composed of, linear material type, etc.
 - c. Upstream Maintenance Access Structure and downstream Maintenance Access Structure identification numbers.
 - d. Direction of inspection (upstream or downstream)
 - e. Date and starting time of the inspection.
2. Once the survey of the pipeline is under way, specific data should be continuously displayed on the viewing monitor and video recording. The size and position of the data display shall be such as not to interfere with the main subject of the picture yet shall be easily readable when the recording is replayed. At a minimum, the following data should be displayed:
 - a. Automatic update of the camera's position, in feet and tenths, in the sewer line from adjusted zero.
 - b. Upstream Maintenance Access Structure and downstream Maintenance Access Structure identification numbers.
3. Each segment length (consecutive Maintenance Access Structure to Maintenance Access Structure) shall be entered on a separate coding sheet. Thus, where CONTRACTOR elects to "pull through" a Maintenance Access Structure during a CCTV survey, CONTRACTOR shall start a new coding sheet at the Maintenance Access Structure "pulled through" and shall reset the distance to zero on the coding sheet, viewing monitor, and video recording.

B. CD-ROM/DVD

1. Permanently label each CD-ROM/DVD with the following information:
 - a. SAWPA BRINE LINE CCTV INSPECTION
 - b. Reach:
 - c. Contractor:
 - d. CD/DVD No:
 - e. Date Inspected:
 - f. Start MH:
 - g. Finish MH:

**ATTACHMENT A
COST PROPOSAL FORM
RFP for Brine Line Flow Meter Calibration
SPECIFICATION NO. Brine Line Flow Meter Calibration-2021**

Due Date and Time for Proposal Submittal: April 7, 2021 by 2:00 p.m. Any omissions, additions, substitutions, conditions or alternates in Offeror’s proposal will be considered irregularities and may be cause for rejection of the Offeror’s proposal, no matter how insignificant or immaterial such irregularity may be. Proposals must be completed in ink, indelible pencil or by typewriter. Erasures or “strike-outs” must be initialed by the Service Provider.

The undersigned does hereby propose to provide services in accordance with all provisions of the Request for Proposals including, but not limited, to the Scope of Work, Exhibits, and references for the following price. Incomplete submittal of requested information as called out in the proposal specification requirements may deem the proposal as non-responsive. The cost proposal shall be submitted in separate envelope provided herein. All envelopes shall be clearly marked with the Specification number and envelope content. Please submit unit costs for at least one of the options below. Unit costs shall be valid until June 30, 2023.

DESCRIPTION	QTY ⁽ⁱ⁾	UNIT	UNIT COST	TOTAL
Furnish all labor, materials, equipment and incidentals to calibrate the following Mag Meters WITHOUT confined space entry requirement:				
Dart Container- Instrument	1	Each		
Temescal Desalter- Instrument	1	Each		
Flavor Specialties- Instrument	1	Each		
Dart Container - Hydraulic	1	Each		
Temescal Desalter - Hydraulic	1	Each		
Flavor Specialties - Hydraulic	1	Each		
Furnish all labor, materials, equipment and incidentals to calibrate the following Mag Meters WITH confined space entry requirement:				
Agua Mansa Power Plant - Instrument	1	Each		
Agua Mansa Power Plant - Hydraulic	1	Each		
Furnish all labor, materials, equipment and incidentals to calibrate the following Ultrasonic meters WITH confined space entry requirement:				
Pyrite Canyon Treatment Facility - Instrument	1	Each		
JCSD Etiwanda - Instrument	1	Each		
JCSD Wineville - Instrument	1	Each		
JCSD Hamner - Instrument	1	Each		
Pyrite Canyon Treatment Facility - Instrument - Hydraulic	1	Each		
JCSD Etiwanda - Hydraulic	1	Each		
JCSD Wineville - Hydraulic	1	Each		
JCSD Hamner - Hydraulic	1	Each		

On-Call Flow Meter Calibration Services

Furnish labor and equipment to repair and/or replace flow meters as requested by SAWPA.				
Repair/replace meters	32	Hours		
TOTAL				

- (i) Meter calibration will take place once per year at each location. The same unit cost will be applied in the case that additional calibrations are required beyond the regularly scheduled meter calibration.
- (ii) This item includes labor and equipment ONLY related to meter repair/replacement. Cost of materials will be reimbursed based on actual costs (plus a mark-up not to exceed 10 percent). All supporting documentation shall be provided. SAWPA will not pay for travel time to/from the site.

TOTAL IN WORDS:

The enclosed proposal includes the following required submittals:

- (1) Cost Proposal Form (Attachment A)
- (2) Non-Collusion Affidavit (Attachment B)
- (3) Acknowledgement of Insurance Requirements (Attachment C)
- (4) Copies of All Addendum Confirmation Form, if applicable.

_____ Name of Firm	_____ Signature	_____ Date
_____ Address	_____ Authorized Agent (Printed or Typed)	
_____ City, State, Zip Code	_____ E-mail address	
_____ Telephone	_____ Fax	
_____ California License No.	_____ Expiration Date	

ATTACHMENT E

Brine Line Flow Meter Calibration Scope of Work

1. Background

The Santa Ana Watershed Project Authority (SAWPA) was formed in 1972 to plan and build facilities to protect water quality in the Santa Ana River Watershed. SAWPA is a Joint Powers Authority (JPA) comprised of five (5) member agencies: Eastern Municipal Water District (EMWD), Inland Empire Utilities Agency (IEUA), Orange County Water District (OCWD), San Bernardino Valley Municipal Water District (SBVMWD), and Western Municipal Water District (WMWD.)

SAWPA owns either capacity rights in, or owns outright approximately 93 miles of pipeline referred to as the Inland Empire Brine Line (BRINE LINE). This interceptor was initially constructed to provide for highly saline, non-domestic discharges in order to protect the inland water quality in the upper Santa Ana River Watershed.

SAWPA is responsible for the meter maintenance and calibration of approximately 16 flow meters.

2. Scope of Services

The Contractor shall provide all labor, equipment, materials, and incidentals to provide flow meter calibration and certification at regularly scheduled times (once per year), as well as when requested by SAWPA. Additionally, meter maintenance and/or replacement services may be required by SAWPA.

The Contractor shall be capable of providing calibration services to all types, makes and models of flow meters and level transducers as identified in Table 1. The meters shall be calibrated using test equipment and calibrators with accuracy traceable to NIST standards. The Contractor shall incorporate all calibration and certification records into a report as described below once the services have been provided.

Table 1. List of Flow Meters

Meter Name	Address	Meter Type	Confined Space	Traffic Control
Pyrite Canyon Treatment Facility	4589 Pyrite Street, Jurupa Valley, CA	ISCO 3010 Ultrasonic	Yes	Cones only ⁽ⁱ⁾
JCSD Etiwanda	4752 Etiwanda, Mira Loma, CA	ISCO 3010 Ultrasonic	Yes	Cones only ⁽ⁱ⁾
JCSD Wineville	Intersection of Wineville Ave. and Bellegrave Ave., Mira Loma, CA	ISCO 3010 Ultrasonic	Yes	No
JCSD Hamner	5592 Hamner, Eastvale, CA	Greyline	Yes	No
Dart Containers	150 S. Maple St. Corona, CA	Rosemount 8712C	No	No
Temescal desalter	745 Corporation Yard Way, Corona, CA	Endress&Hauser Promag 50	No	No
Flavor Specialties	790 Harrison Street, Corona, CA	Sparling Tiger Mag EP F-M-626	No	No
Agua Mansa Power Plant	2040 Agua Mansa Rd., Colton, CA	LC Mag HML200	Yes	No

⁽ⁱ⁾No lane closures are needed. Only cones and a Utility Work Ahead (W21-7) sign are required.

The Contractor shall provide a written report describing the type of work performed, the calibration sheets for each flow meter including, at a minimum, the following information:

1. Name and location of the meter
2. Date of calibration
3. Type of meter
4. Manufacturer and serial number
5. Calibration range
6. “As-found” calibration; power voltage input and corresponding milliamp output at 0, 25, 50, 75, and 100% range
7. “Final” calibration; power voltage input and corresponding milliamp output at 0, 25, 50, 75, and 100% range and percentage of error
8. List of the calibration equipment used
9. Calibration methodology

The report shall be submitted to SAWPA no later than 14 days after calibration of all meters on Table 1 has been completed. All calibration work shall include a 3 month guarantee. In the event of a meter malfunction within 3 months of calibration, the Contractor shall re-calibrate and re-certify the flow meter at no charge to SAWPA.

On-Call Flow Meter Calibration Services

Similarly, the Contractor shall provide a one-year guarantee on any repair and/or replacement of meters. In the event that a meter fails after being repaired or replaced by the Contractor, it shall be repaired and/or replaced at no additional cost to SAWPA.

Calibration of some meters will require confined space entry. The Contractor shall abide by all federal, state, and local laws and regulations regarding confined space entry.

The Contractor shall obtain any required permits and pay all fees as required by the appropriate agency. A permit is expected from the City of Eastvale to allow work on the JCSD Celebration meter, which will require a lane closure. SAWPA will reimburse the Contractor for actual permit costs plus a 10% mark-up allowance to cover administrative costs. Work on other meters will not require any traffic control; however, the Contractor shall provide traffic cones for the instances where any vehicles need to park on the shoulder or next to the curb.

The Contractor shall provide traffic control according to the California Work Area Traffic Control Handbook (WATCH Handbook) or Part 6 of the California Manual on Uniform Traffic Control Devices (MUTCD) if required by the appropriate permitting agency.

Prior to any flow meter calibrations, the Contractor shall provide the following submittals:

- a. Sample report form
- b. Injury and illness prevention plan (IIPP)
- c. OSHA certifications
- d. Confined space entry protocol

ATTACHMENT A

COST PROPOSAL FORM

**RFP for Brine Line On-Call Land Surveying Services
SPECIFICATION NO. Brine Line On-Call Land Surveying Services 2021**

Due Date and Time for Proposal Submittal: April 7, 2021 at 2:00 pm. Any omissions, additions, substitutions, conditions or alternates in Offeror’s proposal will be considered irregularities and may be cause for rejection of the Offeror’s proposal, no matter how insignificant or immaterial such irregularity may be. Proposals must be completed in ink, indelible pencil or by typewriter. Erasures or “strike-outs” must be initialed by the Service Provider.

The undersigned does hereby propose to provide services in accordance with all provisions of the Request for Proposals including, but not limited, to the Scope of Work, Exhibits, and references for the following price. Incomplete submittal of requested information as called out in the proposal specification requirements may deem the proposal as non-responsive. The cost proposal shall be submitted in separate envelope provided herein. All envelopes shall be clearly marked with the Specification number and envelope content. Please submit unit costs for at least one of the options below. Unit costs shall be valid until June 30, 2023.

DESCRIPTION	QTY⁽ⁱ⁾	UNIT	UNIT COST	TOTAL
Land Surveying Services				
Furnish on-call land surveying services, including appropriate deliverables per requirements identified in Scope of Work (crew of 2)	80	Hour		
Furnish on-call land surveying services, including appropriate deliverables per requirements identified in Scope of Work for surveys within Caltrans right-of-way (crew of 3)	10	Hour		
Office work required to process survey data and provide surveying deliverables:				
Research Assistant	20	Hour		
CAD Technician	60	Hour		
Project surveyor	20	Hour		
Supervisor/Manager	20	Hour		
TOTAL				

(i) This is an estimate for the number of hours that surveying services will be required. Contractor will only be paid for work completed. The unit costs listed above will apply if additional quantities are required.

On-Call Land Surveying Services

The enclosed proposal includes the following required submittals:

- (1) Cost Proposal Form (Attachment A)
- (2) Non-Collusion Affidavit (Attachment B)
- (3) Acknowledgement of Insurance Requirements (Attachment C)
- (4) Copies of All Addendum Confirmation Form, if applicable.

_____ Name of Firm	_____ Signature	_____ Date
_____ Address	_____ Authorized Agent (Printed or Typed)	
_____ City, State, Zip Code	_____ E-mail address	
_____ Telephone	_____ Fax	
_____ California License No.	_____ Expiration Date	

ATTACHMENT E

On-Call Land Surveying Services

Scope of Work

1. Background

The Santa Ana Watershed Project Authority (SAWPA) was formed in 1972 to plan and build facilities to protect water quality in the Santa Ana River Watershed. SAWPA is a Joint Powers Authority (JPA) comprised of five (5) member agencies: Eastern Municipal Water District (EMWD), Inland Empire Utilities Agency (IEUA), Orange County Water District (OCWD), San Bernardino Valley Municipal Water District (SBVMWD), and Western Municipal Water District (WMWD.)

SAWPA owns and operates approximately 73 miles of pipeline referred to as the Inland Empire Brine Line (Brine Line). This interceptor conveys brine wastewater consisting of high saline, non-domestic discharges, industrial dischargers, and temporary domestic discharges.

2. Scope of Services

SAWPA is requesting proposals from qualified surveying professionals to provide On-Call Land Surveying Services in Riverside and San Bernardino Counties, including, but not limited to:

- a. Field surveys of boundary lines, pipelines per as-built drawings, easements, topography, existing structures, and potholes, including staking.
- b. Preparation of property descriptions, plats, and right-of-way maps.
- c. Perform various types of surveying tasks on all types of construction projects.

The Contractor shall provide all labor, equipment, materials, and incidentals to provide the services identified above. The Contractor shall provide on-call surveying services within five (5) days from the time SAWPA requests such services. All surveying work shall be paid on an hourly basis for work performed only. SAWPA will not pay travel and/or Stand-by time. All travel time shall be factored into the hourly rate provided by the Contractor on Attachment A – Cost Proposal Form. In addition, the Contractor shall provide necessary office support to process the information obtained as a result of the land surveying effort.

The Contractor shall provide at a minimum two ‘Surveying Crew’ (W21-6) signs with a size of 30” x 30” when land surveying services are provided, if requested by Owner. The Owner will provide the Contractor with copies of the permits and the Contractor shall follow all requirements established in such permits.

On-Call Land Surveying Services

All data submitted to SAWPA shall be processed and formatted using AutoCAD latest version. The Contractor shall use coordinates established in UTM NAD 83 Zone 11.

All work shall be performed under the direction of a Registered Land Surveyor, in accordance with the Professional Land Surveyors Act ('PLSA'), Chapter 15, Article 3, Section 8276 and/or a licensed engineer authorized to perform Land Surveying registered with the State of California under Section 8731 of the PLSA. The surveyor shall maintain professional licenses required by the laws of the State of California at all times while under contract with SAWPA.

The surveyor shall submit all original field notes, grade sheets and ties on 8 ½" x 11" notepaper. The Surveyor shall also submit original unedited files, edited files, adjustments for traverses, least square adjustments including error ellipses and residuals, and final values in ASCII format. Survey maps shall be submitted in both PDF and AutoCAD (DWG) formats.

The surveyor shall have and use his/her own equipment and use his/her own office space.

Potential bidders are encouraged to notify SAWPA in writing, of any apparent major inconsistencies, problems or ambiguities in the Scope of Work. If deemed necessary, SAWPA shall request a meeting to discuss any relevant issues raised by any potential bidder.

Page Intentionally Blank

Brine Line Service Contracts RFPs

Carlos Quintero, Operations Manager

PA24 Committee | March 2, 2021

Item No. 5.C.

Recommendation

- Direct the General Manager to issue Requests for Proposals (RFPs) for the Inland Empire Brine Line service contracts.

Service Contracts

- *Pipeline cleaning: Vacuum trucks, water trucks, and traffic control for Brine Line cleaning operations. **Current contract with Downstream Services through June 2022.***
- *Line draining and emergency response: Tanker trucks for line draining during planned maintenance and emergencies, as well as material support during SSOs.*
- *Debris hauling and disposal: Removal of dewatering bins and hauling to disposal site.*
- *Pipeline inspection (CCTV): Line inspection as required per the Brine Line Sewer System Management Plan.*
- *Flow meter calibration: Annual calibration of dischargers flow meters.*
- *Surveying: On-call surveying services as required.*

Schedule

Activity	Date
PA24 Committee Approves RFPs	3/2/2021
Issue RFPs	3/2/2021
Pre-Proposal Meetings	3/24/2021
RFP Due Date	4/7/2021
PA24 Committee Approval	5/4/2021

Cost Estimate (FY21-22)

Service	Estimated Cost (in US\$ per year)
Line draining and emergency response	\$50,000
Debris hauling and disposal	\$20,000
Pipeline inspection	\$50,000
Flow meter calibration	\$20,000
Surveying	\$15,000
TOTAL	\$155,000

Recommendation


- Direct the General Manager to issue Requests for Proposals (RFPs) for the Inland Empire Brine Line service contracts.

**Santa Ana Watershed Project Authority
PA24 - Brine Line - Financial Report
December 2020**

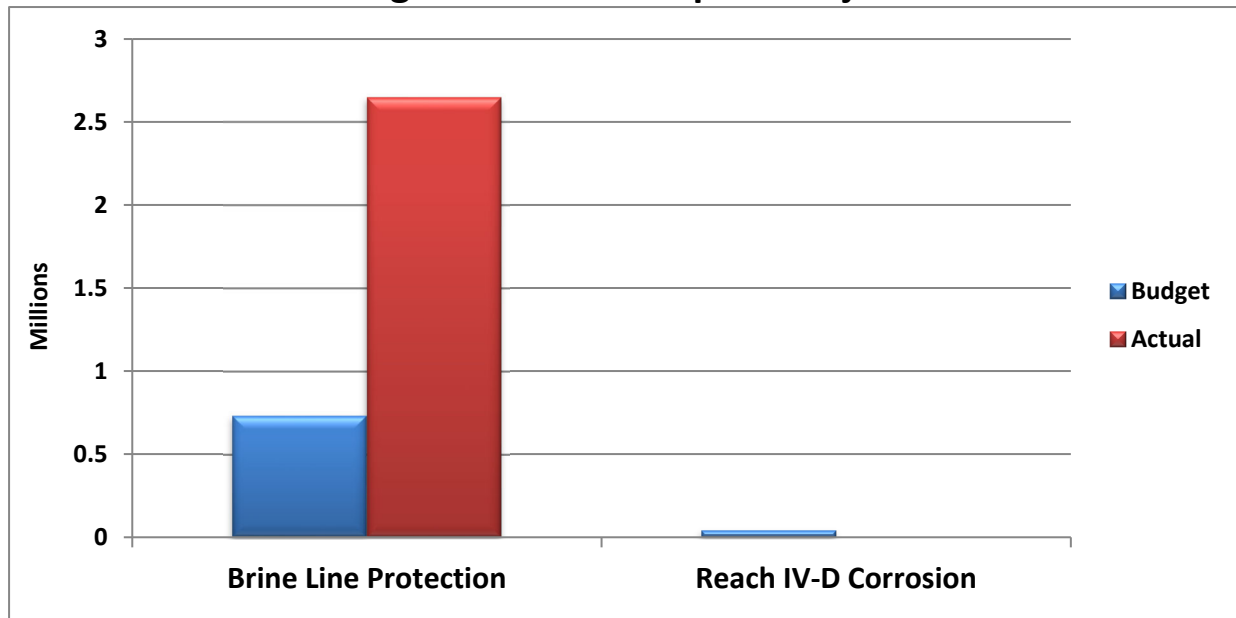
Staff comments provided on the last page are an integral part of this report.

Overview	This report highlights the Brine Line’s key financial indicators for the Fiscal Year-to-Date (FYTD) through December 2020 unless otherwise noted.
-----------------	---


Brine Line - Capital Projects

Budget to Actual – Capital Projects				 Concern
	Annual Budget	FYTD Budget	FYTD Actual	Favorable (Unfavorable) Variance
Brine Line Protection	\$1,466,878	\$733,439	\$2,646,627	(\$1,913,188)
Reach IV-D Corrosion	82,151	41,076	-	41,076
Total Capital Costs	\$1,549,029	\$774,515	\$2,646,627	(\$1,872,112)

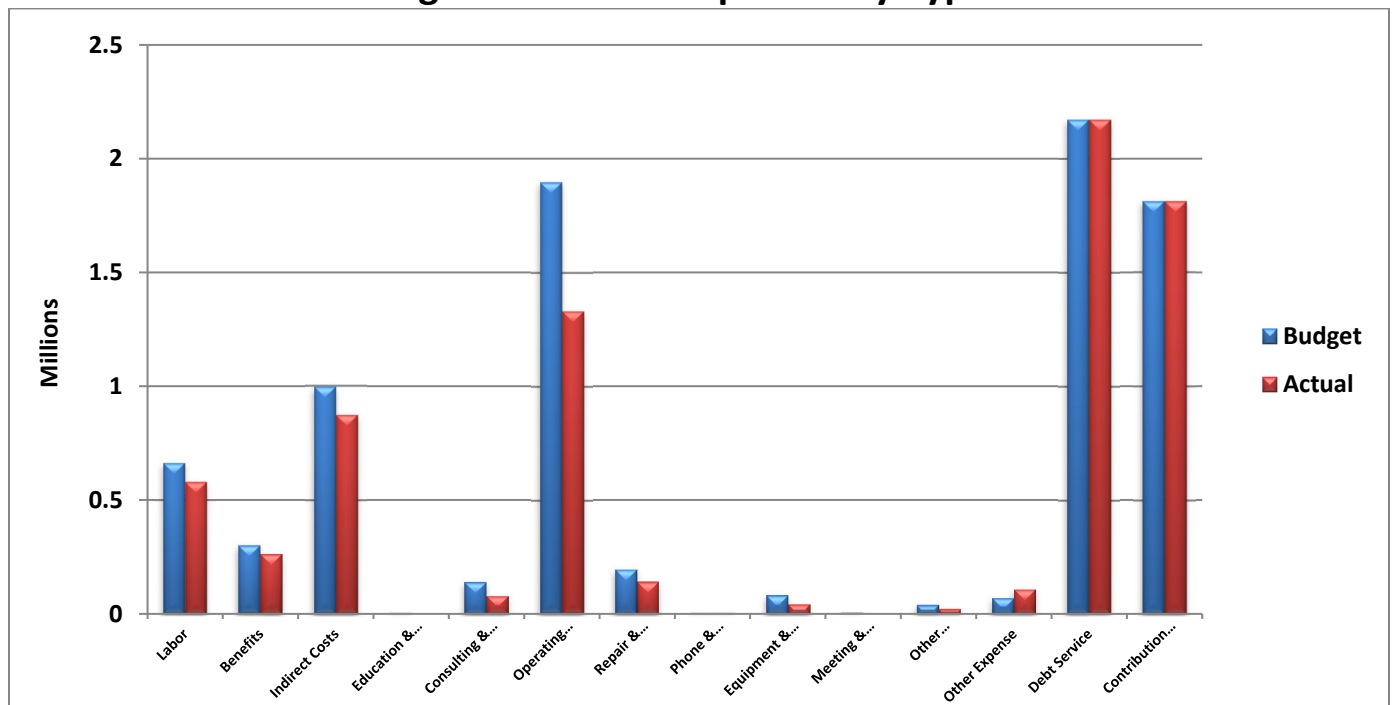
Budget to Actual - Capital Projects



Brine Line – Operating

Budget to Actual - Expenses by Type				 Favorable
	Annual Budget	FYTD Budget	FYTD Actual	Favorable (Unfavorable) Variance
Labor	\$1,320,100	\$660,050	\$578,210	\$81,840
Benefits	597,981	298,991	261,929	37,062
Indirect Costs	1,990,646	995,323	871,940	123,383
Education & Training	12,500	6,250	-	6,250
Consulting & Prof Svcs	280,000	140,000	80,338	59,662
Operating Costs	3,792,500	1,896,250	1,330,385	565,865
Repair & Maintenance	385,000	192,500	139,908	52,592
Phone & Utilities	11,700	5,850	5,937	(87)
Equip & Computers	161,500	80,750	43,225	37,525
Meeting & Travel	10,000	5,000	-	5,000
Other Admin Costs	77,900	38,950	22,438	16,512
Other Expense	142,350	71,175	108,111	(36,936)
Debt Service	2,835,027	2,170,850	2,170,551	299
Contribution to Reserves	3,619,241	1,809,621	1,809,620	-
Total	\$15,236,445	\$8,371,560	\$7,422,592	\$948,968

Budget to Actual - Expenses by Type



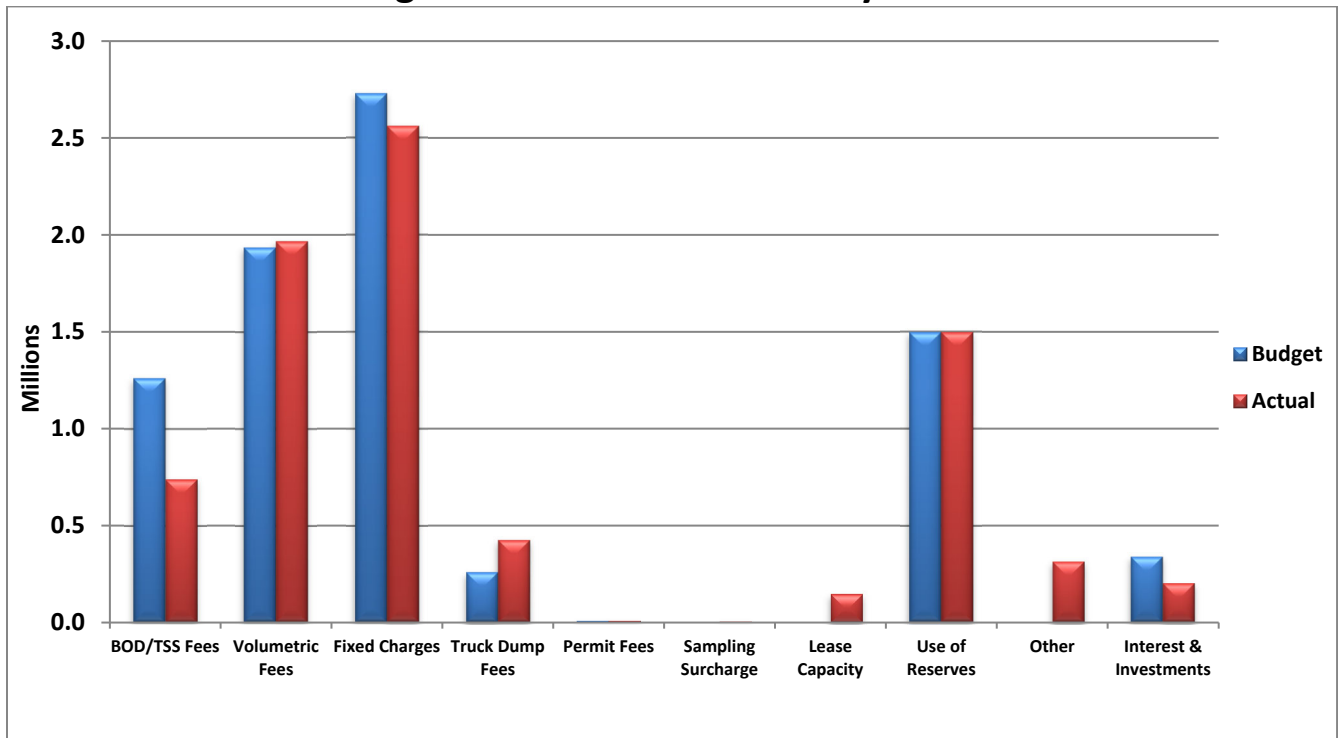
Budget to Actual - Revenues by Source



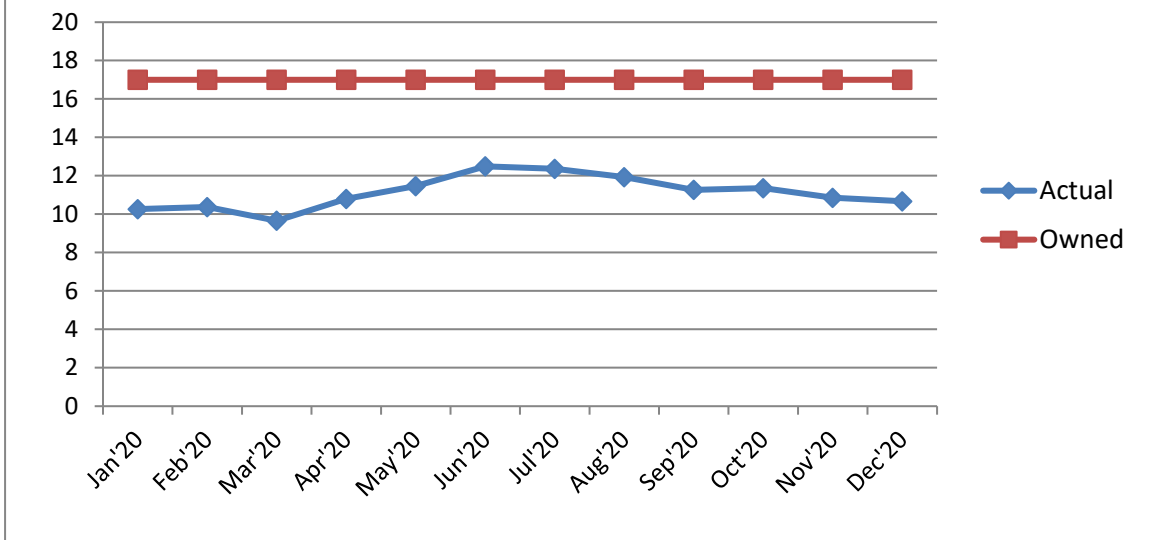
On Track

	Annual Budget	FYTD Budget	FYTD Actual	Favorable (Unfavorable) Variance
BOD/TSS Fees	\$2,520,700	\$1,260,350	\$738,467	(\$521,883)
Volumetric Fees	3,868,400	1,934,200	1,966,484	32,284
Fixed Charges	5,453,233	2,726,617	2,559,264	(167,353)
Truck Dump Fees	521,000	260,500	426,031	165,531
Permit Fees	38,085	8,000	8,850	850
Sampling Surcharge	-	-	3,368	3,368
Lease Capacity Revenue	-	-	145,726	145,726
Use of Reserves	2,160,027	1,495,850	1,495,850	-
Other Revenue	-	-	314,727	314,727
Interest & Investments	675,000	337,500	201,510	(135,990)
Total	\$15,236,445	\$8,023,017	\$7,860,277	(\$162,740)

Budget to Actual - Revenues by Source



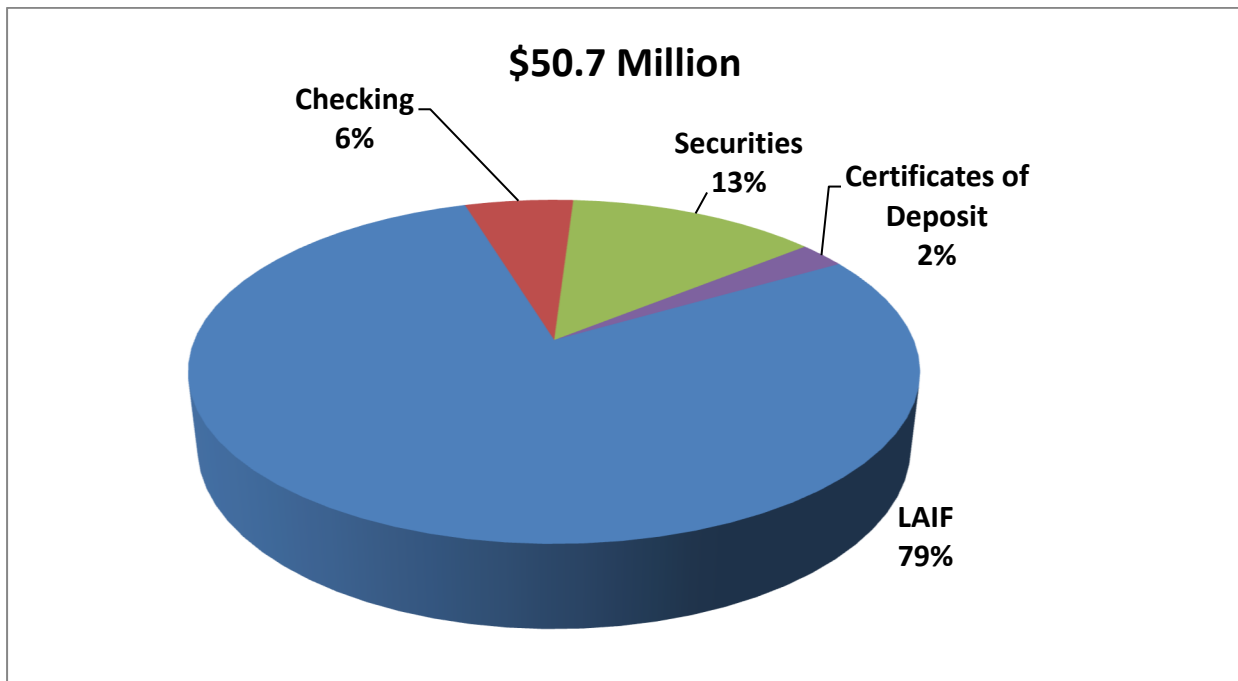
Average Daily Flow by Month



Total Discharge by Agency (in million gallons)

Discharger	Jul '20	Aug'20	Sep'20	Oct'20	Nov'20	Dec'20	Total
Chino Desalter Authority	116.5012	112.1985	111.5921	113.5047	92.4434	101.8909	648.1308
Eastern Municipal Water District	73.2679	76.5411	71.3266	69.7128	45.2323	51.3534	387.4341
Inland Empire Utilities Agency	17.3110	15.2022	15.0274	16.1369	14.3543	12.9822	91.0140
San Bernardino Valley MWD	27.9092	28.2059	24.6697	27.3885	35.2666	38.0272	181.4671
Western Municipal Water District	129.9649	113.2654	114.2837	127.8736	108.1608	99.2837	692.8321
Truck Discharge	3.7416	3.7402	3.6307	3.4223	3.2096	3.0138	20.7582
Total	368.6958	349.1533	340.5302	358.0388	298.6670	306.5512	2,021.6363





Total Cash & Investments - December



Reserve Fund Balance – December

	Amount
Self Insurance	\$4,429,783
Debt Retirement	2,468,280
Pipeline Replacement	22,208,667
OCSO Rehabilitation	2,368,201
Capacity Management	11,934,754
Future Capacity	1,827,250
Rate Stabilization	1,023,941
Flow Imbalance	83,407
Brine Line Operating	4,386,799
Total Reserves	\$50,731,082

Legend

		<u>Compared to Budget</u>
	Ahead or Favorable	Above +5% Favorable Revenue or Expense Variance
	On Track	+5% to -2% Variance
	Behind	-3% to -5% Variance
	Concern	Below -5% Variance

Staff Comments

For this month's report, the item(s) explained below are either "behind", a "concern", or have changed significantly from the prior month.

Capital Projects are 241% above budget. The reason for the budget overage is OCSD sent invoices of \$1,358,656 for the prior fiscal year and the early completion of the Alcoa Dike – Lower Reach IV-B and CRC Lateral Utility Protection Project.