

# Euclid Avenue (Reach IVA and Reach IVD) Maintenance Access Structure (MAS) Rehabilitation Project Notice of Completion

**David Ruhl, Engineering Manager**

**Project Agreement 24 Committee | February 2, 2021**

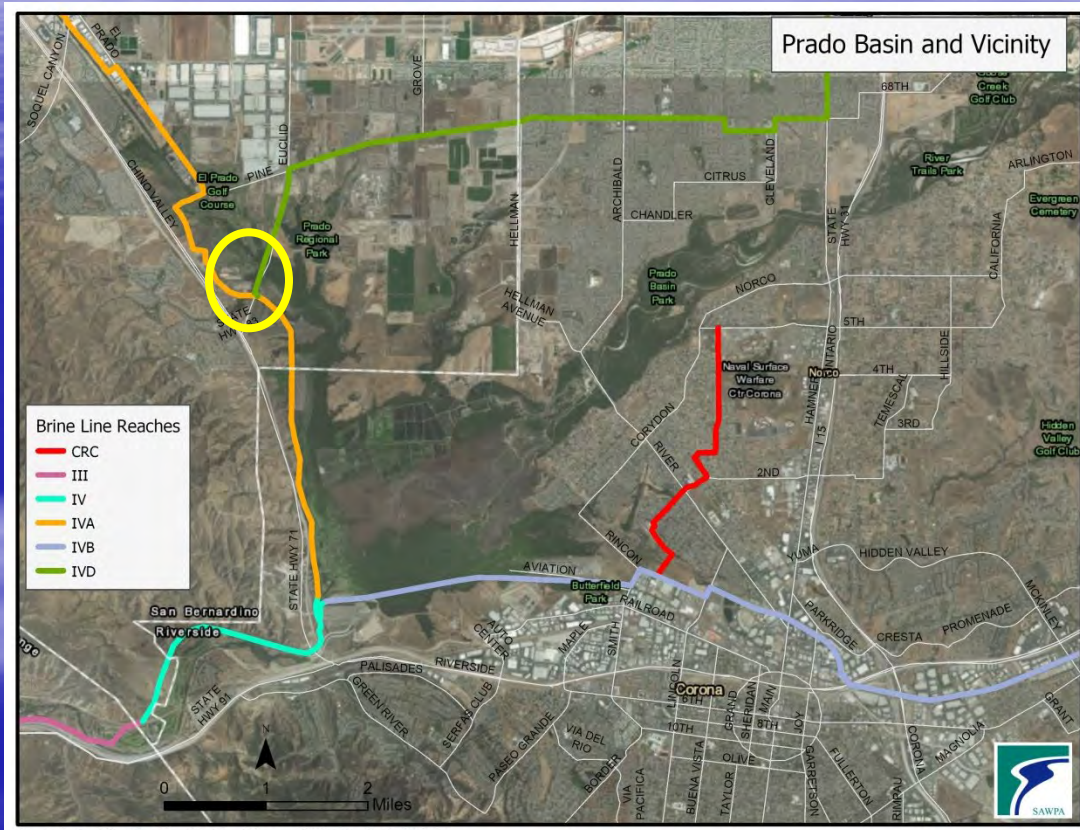
**Agenda Item No. 5.A.**

# Euclid Avenue (Reach IVA and Reach IVD) MAS Rehabilitation Project

## ■ Recommendation

- Authorize the GM to accept the Abhe & Svoboda Inc. work as complete and direct staff to file a Notice of Completion with the San Bernardino County Clerk upon the following:
  - Contractor has delivered all documents required by the Contract Documents;
  - Notice from Engineer accepting the work;
  - Receipt of Final Application for Payment from the Contractor; and
  - Notice from Construction Manager recommending final payment.

# Project Location and Description



- Seal 5 MAS on Reach IVD to withstand pressurization
- Remove 1 MAS on Reach IVA due to concrete deterioration



MAS Concrete Deterioration

# Installation of fabricated covers for “Sealing” of MAS



# Removal of MAS due to Concrete Deterioration



# Contract Authorization

## Contractor

## Contract Amount

Abhe & Svoboda, Inc,  
- Change Order 1

\$481,000  
(\$25,419)

Final Contract Amount

\$455,581

# Euclid Avenue (Reach IVA and Reach IVD) MAS Rehabilitation Project

## ■ Recommendation

- Authorize the GM to accept the Abhe & Svoboda Inc. work as complete and direct staff to file a Notice of Completion with the San Bernardino County Clerk upon the following:
  - Contractor has delivered all documents required by the Contract Documents;
  - Notice from Engineer accepting the work;
  - Receipt of Final Application for Payment from the Contractor; and
  - Notice from Construction Manager recommending final payment.

**QUESTIONS?**



# Alcoa Dike – Lower Reach IVB and CRC Lateral Protection Project Notice of Completion

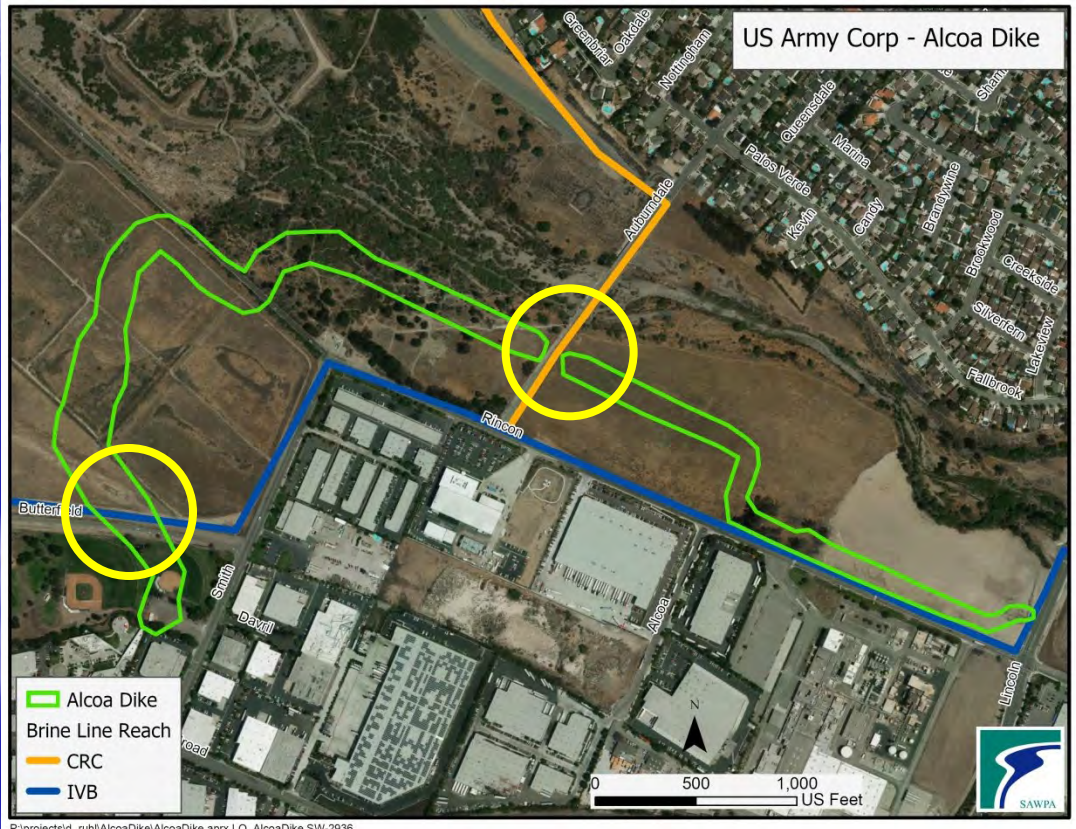
**David Ruhl, Engineering Manager**  
**Project Agreement 24 Committee | February 2, 2021**  
**Agenda Item No. 5.B.**

# Lower Reach IVB and CRC Lateral Protection Project

## ■ Recommendation

- Authorize the GM to accept the Weka Inc. work as complete and direct staff to file a Notice of Completion with the Riverside County Clerk upon the following:
  - Contractor has delivered all documents required by the Contract Documents;
  - Notice from Engineer accepting the work;
  - Receipt of Final Application for Payment from the Contractor; and
  - Notice from Construction Manager recommending final payment.

# Alcoa Dike - Reach IVB/CRC Lateral



- Protect Reach 4B/CRC Lateral Due to Impacts of Alcoa Dike
- Remove and Replace about 440 feet of Reach IVB
- Remove and Replace about 160 feet of the CRC Lateral

# Fusing of HDPE Pipe



# Installation of New 36" HDPE Pipe



# Contract Authorization

## Contractor

## Contract Amount

Weka, Inc	\$1,349,805
- Change Order 1	<u>(\$25,170)</u>
Final Contract Amount	\$1,324,635

# Lower Reach IVB and CRC Lateral Protection Project

## ■ Recommendation

- Authorize the GM to accept the Weka Inc. work as complete and direct staff to file a Notice of Completion with the Riverside County Clerk upon the following:
  - Contractor has delivered all documents required by the Contract Documents;
  - Notice from Engineer accepting the work;
  - Receipt of Final Application for Payment from the Contractor; and
  - Notice from Construction Manager recommending final payment.

**QUESTIONS?**



# Pine Avenue Improvements

Carlos Quintero, Operations Manager

PA24 Committee | February 2, 2021

Item No. 5.C.

# Recommendation

- Receive and file

# Inland Empire Brine Line

— Brine Line Laterals

## Brine Line

### REACH

— IV

— IVA

— IVB

— IVD

— IVE

— V

Project Location

SBVMWD

IEUA

WMWD

OCWD

EMWD

5 2.5 0 5 Miles



Conflict with  
bridge footings

CITY OF  
CHINO

INLAND EMPIRE  
UTILITIES AGENCY  
REGIONAL PLANT  
NO. 2

APN  
1027-401-05  
INLAND EMPIRE  
UTILITIES AGENCY

CITY OF CHINO HILLS

FAIRFIELD  
RANCH  
ROAD

APN  
1027-492-01  
VACANT  
LAND

APN  
1027-401-01  
VACANT  
LAND

CHINO VALLEY

STATE R/W

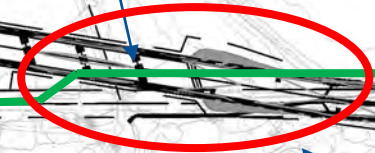
PINE AVENUE

FREWAY SR-71 FWY

CHINO CREEK

EL PRADO ROAD

APN  
1027-



Section of Brine  
Line likely to be  
relocated (~ 700 ft)

CITY OF CHINO

APN  
1027-472-02

CITY BOUNDARY

APN  
1027-471-02

EL PRADO GOLF  
COURSE

PROPERTY LINE  
PER RECORD  
OF SURVEY

APN  
1027-471-03

POMONA  
RINCON  
ROAD

EL PRADO GOLF  
COURSE

APN  
1027-472-01

STATE R/W

# Pine Avenue Siphon



Downstream Maintenance Access Structure



Upstream Maintenance Access Structure

# Recommendation

- Receive and file.



Questions??