

# ACCENT IT SERVICES

15 MONTH PERIOD



# RECOMMENDATION

- It is recommended that the Commission authorize the General Manager to execute the Task Order No. ACS100-23 with Accent Computer Solutions for a 15 Month Period starting October 1, 2021 and ending December 31, 2022 in an amount not to exceed \$107,375.

# BACKGROUND



- Accent Computer Solutions has been SAWPA'S Managed Service Provider(MSP) since Accent was selected in July of 2018 and is currently providing IT Services.
- New IT Analyst onboarding
- New RFPs for IT services to be issued in September





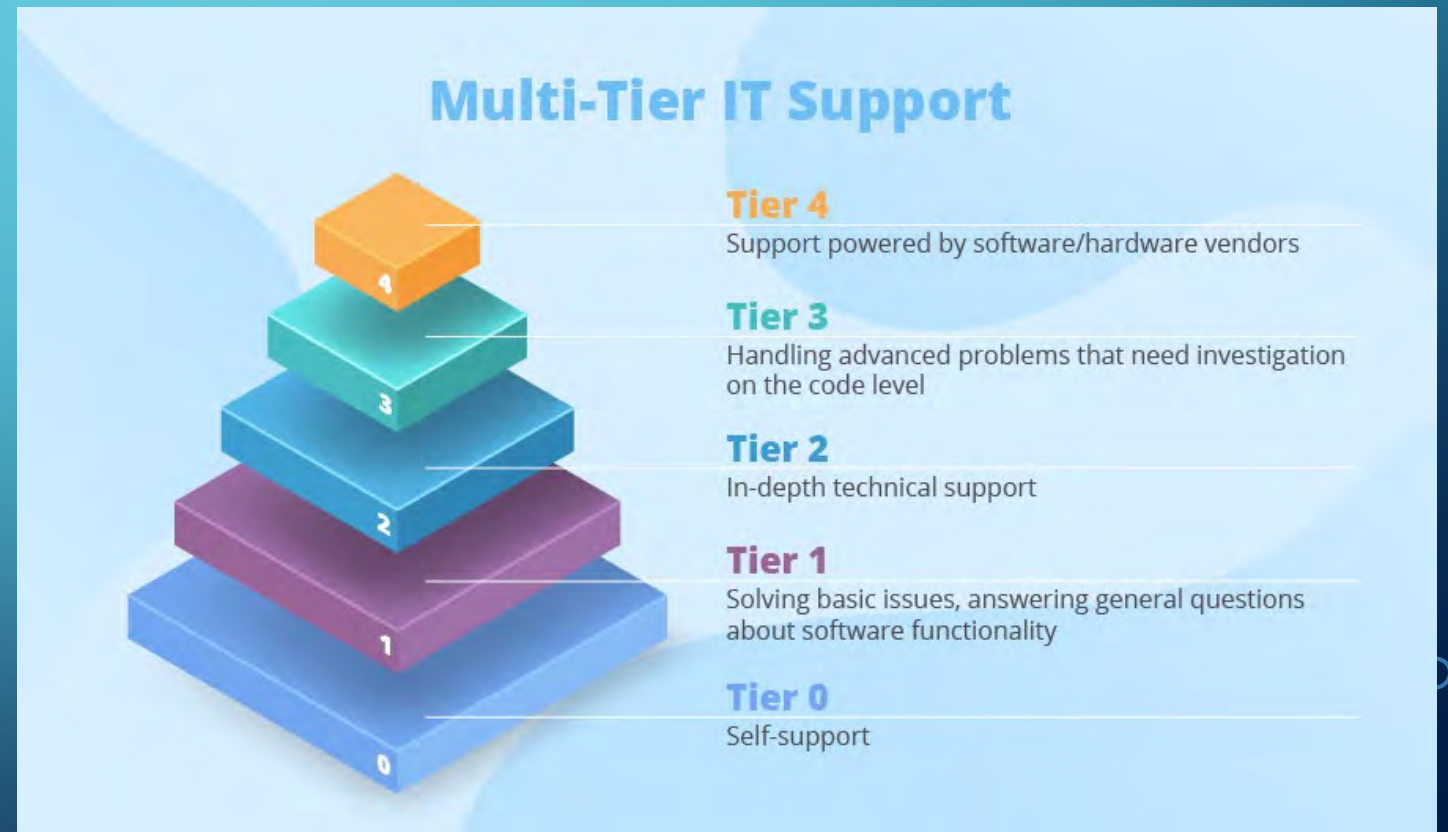
# CURRENT ACCENT IT SERVICES

- 24 x 7 Support including Desktop support during SAWPA business hours
- Network and Server Infrastructure
- Security
- Office 365
- Server management
- Onsite and Offsite Backups
- Hardware Acquisition Experience using State Procurement Contracts such as NASPO



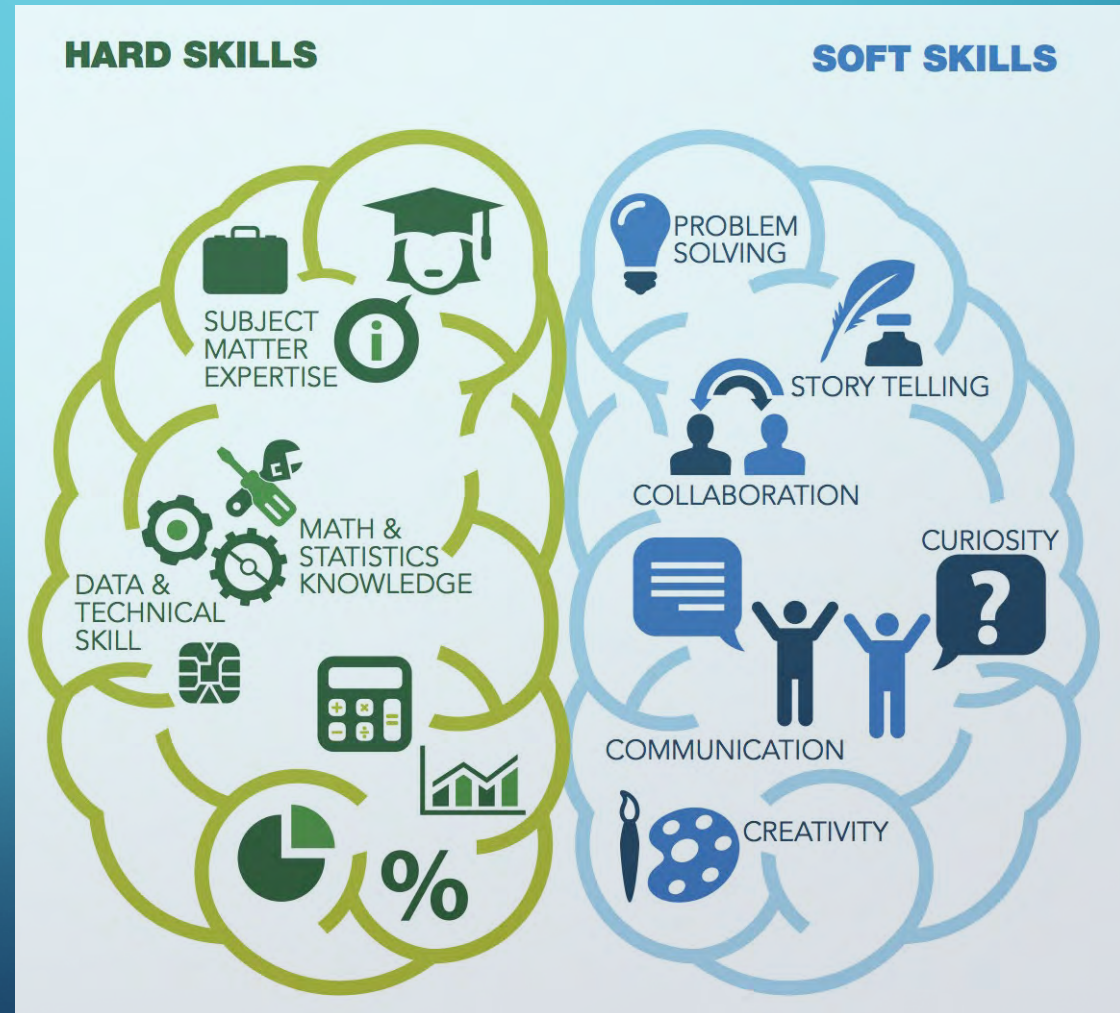
# BLENDED IT SUPPORT

- SAWPA IT Staff
  - Tier 0/Tier 1/Tier 2 Support
- Accent IT Support
  - Tier 2/Tier 3
- Application Support Vendor
  - Tier 4



# IT ANALYST ON BOARDING

- Integrated into IT at SAWPA
- Identify areas of overlap with Managed Service Provider (MSP) Accent
- Develop skills to reduce MSP dependency and cost before release of RFP





# TIMELINE

2021

2023



# RECOMMENDATION

- It is recommended that the Commission authorize the General Manager to execute the Task Order No. ACS100-23 with Accent Computer Solutions for a 15 Month Period starting October 1, 2021 and ending December 31, 2022 in an amount not to exceed \$107,375.



# SAWPA Landscaping Improvements

Carlos Quintero, Operations Manager  
SAWPA Commission | September 21, 2021  
Item No. 6.A.

# Recommendation

- Direct the General Manager to prepare bid documents for the SAWPA Building Landscaping Improvements.

# Project Drivers

- Existing irrigation System in place since 1990s
- Existing irrigation system not optimized for existing vegetation/trees
- New system will increase water use efficiency
- Landscaping around the SAWPA building is past its prime and needs replacement
- Demonstration garden requires improvements





Area around main building  
(looking west)



Area around main building  
(looking northwest)





Demonstration Garden  
(looking north)



Demonstration Garden  
(looking northeast)

# Cost Breakdown

Concept	Estimated Amount	Percentage
Irrigation System	\$59,095	45.2%
Improvements around the Main Building	\$36,117	27.6%
Demonstration Garden Improvements	\$12,117	9.3%
Other (mobilization, clearing/grubbing, 90-day maintenance, etc.)	\$23,466	17.9%
TOTAL	\$130,795	100%



# Recommendation

- Direct the General Manager to prepare bid documents for the SAWPA Building Landscaping Improvements.



Questions??

# SAWPA Lobby Security Improvements

Carlos Quintero, Operations Manager  
SAWPA Commission| September 21, 2021  
Item No. 6.B.

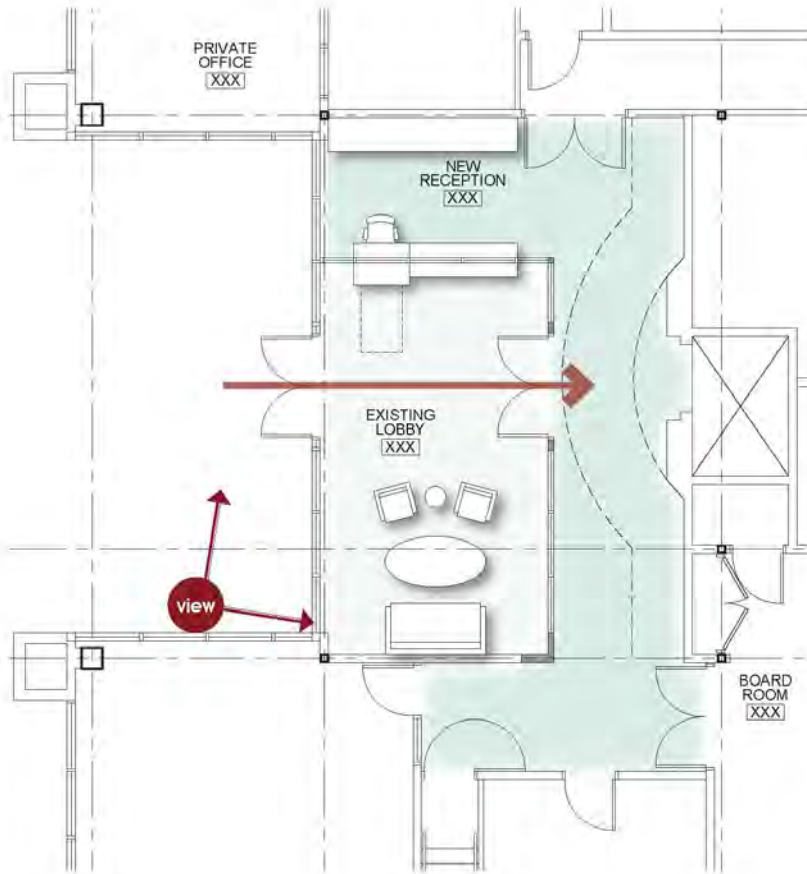


# Recommendation

- Direct the General Manager to prepare bid documents for the SAWPA Lobby Security Improvements.

# Proposed Partition

- Maintains access to the lobby open to the public.
- Increases security by providing a mechanism to control who access the building through the secondary door.
- Improvements consistent with previous building renovation efforts (Phases 1 and 2)





PROPOSED LOBBY - SCHEME 1

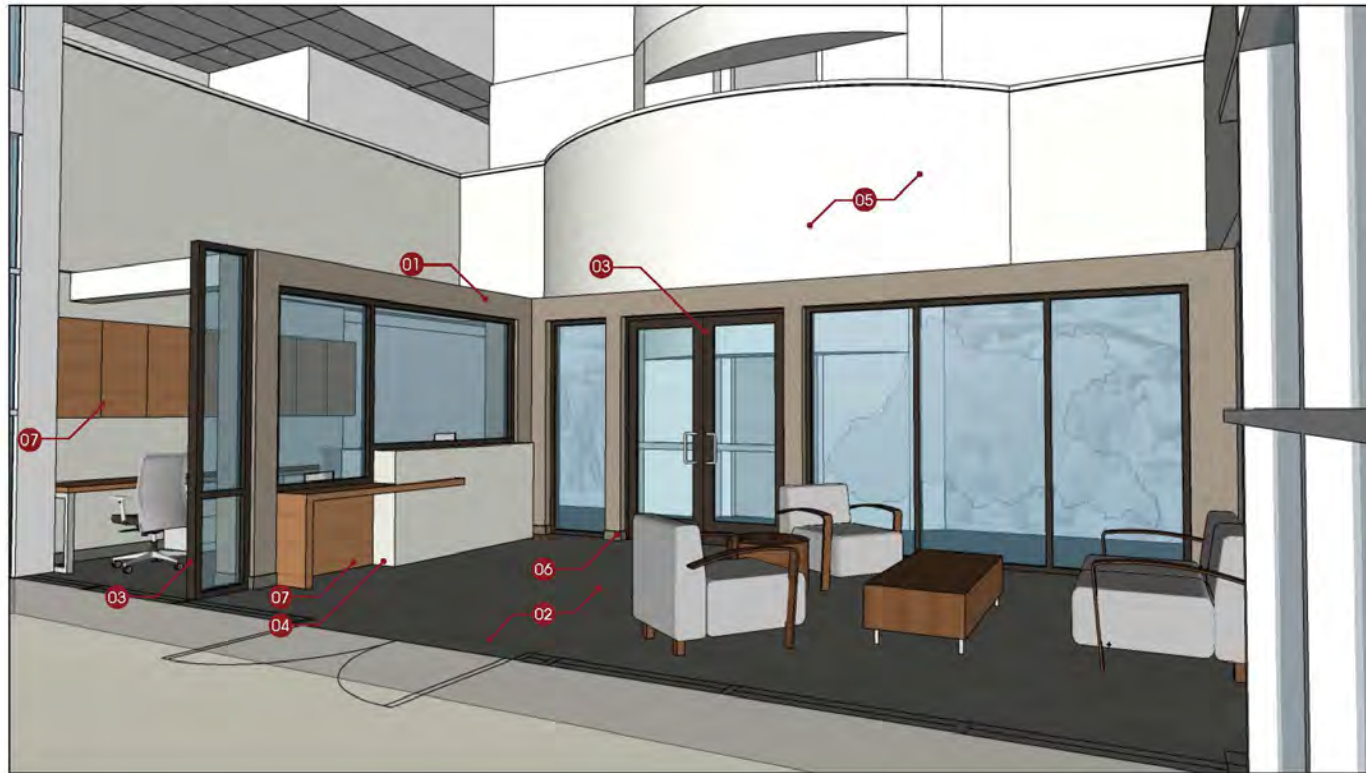
SCHEME 1 : CONCEPTUAL PERSPECTIVE- PROPOSED





PROPOSED LOBBY - SCHEME 2

SCHEME 2 : CONCEPTUAL PERSPECTIVE- PROPOSED



PROPOSED LOBBY - SCHEME 3

SCHEME 3 : CONCEPTUAL PERSPECTIVE- PROPOSED



SCHEME 1 : CONCEPTUAL PERSPECTIVE- PROPOSED

PROPOSED LOBBY - SCHEME 1



SCHEME 2 : CONCEPTUAL PERSPECTIVE- PROPOSED

PROPOSED LOBBY - SCHEME 2





SCHEME 3 : CONCEPTUAL PERSPECTIVE- PROPOSED

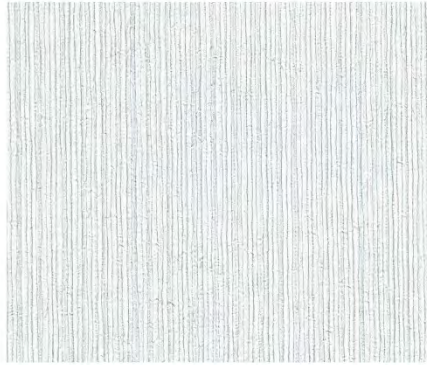
PROPOSED LOBBY - SCHEME 3

# Recommendation

- Direct the General Manager to prepare bidding documents for the SAWPA Building Landscaping Improvements.



Questions??



**01** KOROSEAL - WALLCOVERINGS  
INTERLOOM PRUSSIAN - NM21-19



**02** PATCRAFT - VINYL FLOORING  
1440V CROSSOVER INSTEP - 00500 HAZE- V2



**03** DARK BRONZE  
STOREFRONT SYSTEM



**04** DAL TILE - ENGINEERED STONE  
OQ47 - CALACATTA PATRIOTIC



**05** SHERWIN WILLIAMS - PAINT  
EGRET WHITE SW 7570

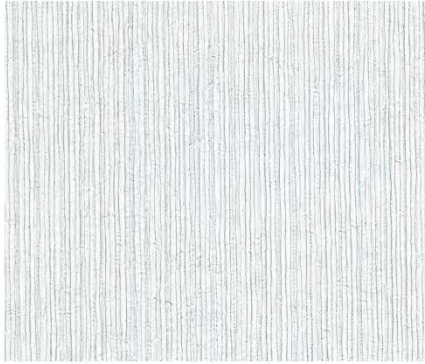
**06** BURKE - RUBBER BASE  
108 BRONZE METALLIC



**07** WILSONART - PLASTIC LAMINATE  
ZANZIBAR - 7957

## SCHEME 1: MATERIALS BOARD - PROPOSED





**01** KOROSEAL - WALLCOVERINGS  
INTERLOOM PRUSSIAN - NM21-19



**02** DAL TILE - GLAZED PORCELAIN  
CONCRETE MASONRY (PTS) REBAR GREY P037



**03** DARK BRONZE  
STOREFRONT SYSTEM



**04** DAL TILE - ENGINEERED STONE  
OQ47 - CALACATTA PATRIOTIC



**05** SHERWIN WILLIAMS - PAINT  
EGRET WHITE SW 7570



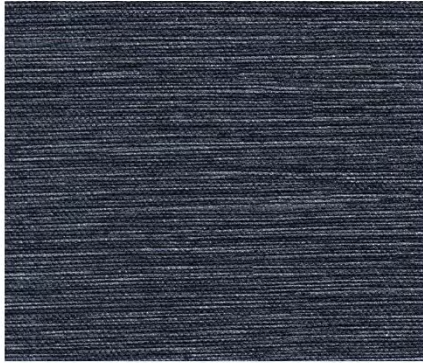
**06** BURKE - RUBBER BASE  
108 BRONZE METALLIC



**07** WILSONART - PLASTIC LAMINATE  
ZANZIBAR - 7957

## TILE FLOORING OPTION

## SCHEME 1: MATERIALS BOARD - PROPOSED



**01** KOROSEAL - WALLCOVERINGS  
INTERLOOM PRUSSIAN - NM21-19



**02** PATCRAFT - VINYL FLOORING  
1440V CROSSOVER INSTEP - 00500 HAZE- Y2



**03** CLEAR ADONIZED  
STOREFRONT SYSTEM



**04** DAL TILE - ENGINEERED STONE  
OQ34 - ROCKY MOUNTAIN



**05** SHERWIN WILLIAMS - PAINT  
EIDER WHITE SW 7014 **06** ROPPE - RUBBER BASE  
193 BLACK BROWN



**07** WILSONART - PLASTIC LAMINATE  
WALNUT HEIGHTS - 7965

## SCHEME 2: MATERIALS BOARD - PROPOSED



**01** KOROSEAL - WALLCOVERINGS  
INTERLOOM PRUSSIAN - NM21-19



**02** DAL TILE - PORCELAIN TILE FLOORING  
ENLITE - TRANSCEND EL64



**03** CLEAR ADONIZED  
STOREFRONT SYSTEM



**04** DAL TILE - ENGINEERED STONE  
OQ34 - ROCKY MOUNTAIN



**05** SHERWIN WILLIAMS - PAINT  
EIDER WHITE SW 7014 **06** ROPPE - RUBBER BASE  
193 BLACK BROWN



**07** WILSONART - PLASTIC LAMINATE  
WALNUT HEIGHTS - 7965

## TILE FLOORING OPTION

## SCHEME 2: MATERIALS BOARD - PROPOSED





**01** KOROSEAL - WALLCOVERINGS  
INTERLOOM PRUSSIAN - NM21-19



**02** PATCRAFT - VINYL FLOORING  
1440V CROSSOVER INSTEP - 00500 HAZE- V2



**03** STATUARY BRONZE  
STOREFRONT SYSTEM



**04** DAL TILE - ENGINEERED STONE  
OQ32 - NIAGARA



**05** SHERWIN WILLIAMS - PAINT  
INCREDIBLE WHITE SW 7028

**06** ROPPE - RUBBER BASE  
050 MOONBEAM



**07** WILSONART - PLASTIC LAMINATE  
BRAZILWOOD - 7946

## SCHEME 3: MATERIALS BOARD - PROPOSED



**01** KOROSEAL - WALLCOVERINGS  
INTERLOOM PRUSSIAN - NM21-19



**02** DAL TILE - PORCELAIN TILE FLOORING  
REVOTILE - STONE LOOK - TOWER WHITE RV60



**03** STATUARY BRONZE  
STOREFRONT SYSTEM



**04** DAL TILE - ENGINEERED STONE  
OQ32 - NIAGARA



**05** SHERWIN WILLIAMS - PAINT  
INCREDIBLE WHITE SW 7028

**06** ROPPE - RUBBER BASE  
050 MOONBEAM



**07** WILSONART - PLASTIC LAMINATE  
BRAZILWOOD - 7946

## TILE FLOORING OPTION

## SCHEME 3: MATERIALS BOARD - PROPOSED



# **Regional Water Quality Monitoring Task Force**

## **Santa Ana Regional Monitoring Program Data Viewer**

**Rick Whetsel, Senior Watershed Manager  
SAWPA Commission | September 21, 2021  
Item No. 6.C.**



# Recommendation

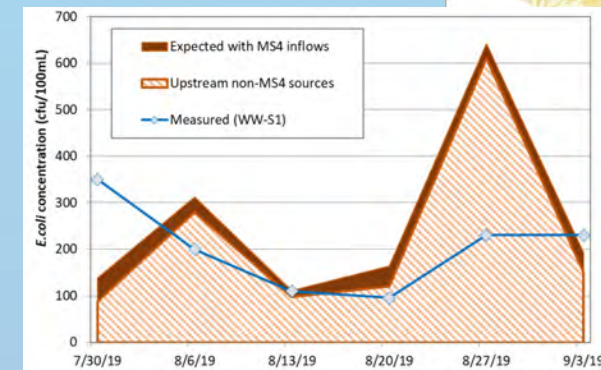
It is recommended that the Commission receive and file this information report on the Regional Water Quality Monitoring Task Force and its effort to replace tabular quarterly reports with an online data reporting dashboard.



# Regional Water Quality Monitoring Task Force

## Scope of Activities

- Implements a coordinated regional surface water quality (bacteria) monitoring program:
  - Meet the requirements of the Basin Plan Implementation Plan bacterial indicator monitoring requirements
  - Support consolidation and standardization of regional programs such as the Middle Santa Ana River Bacteria TMDL
  - Annual reporting to Regional Board (June )
- Assist Regional Board with future triennial reviews and future amendments of the Basin Plan



# History / Timeline

## Stormwater Quality Standards Task Force

- **May 2003** – SAWPA approved Agreement
- **June 2012** – Regional Board adopts Basin Plan Amendment Revising Recreation Standards for Inland Freshwaters
- **April 2015** – EPA Approves Basin Plan Amendment Revising Recreation Standards for Inland Freshwaters

## Middle Santa Ana River Pathogen TMDL Task Force

- **January 2006** – SAWPA approved Agreement
- **May 2007** – EPA Approves MSAR TMDLs

## Regional Water Quality Monitoring Program

- **March 2016** – Regional Board approves Santa Ana Watershed Bacteria Monitoring Program and Quality Assurance Project Plan reflecting a need for a new Task Force
- **May 2016** – Regional Water Quality Monitoring Task Force Implements Santa Ana River Regional Bacteria Monitoring Program









# Funding Partners

## Regional Water Quality Monitoring Task Force

- County of Orange
- Riverside County Flood Control & Water Conservation District
- San Bernardino County Flood Control District

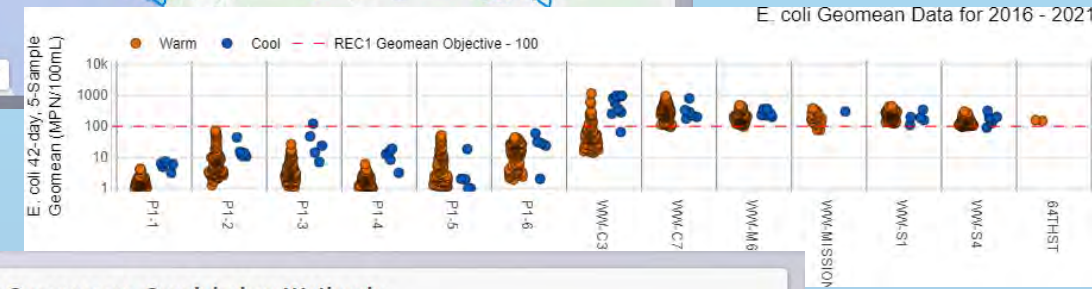
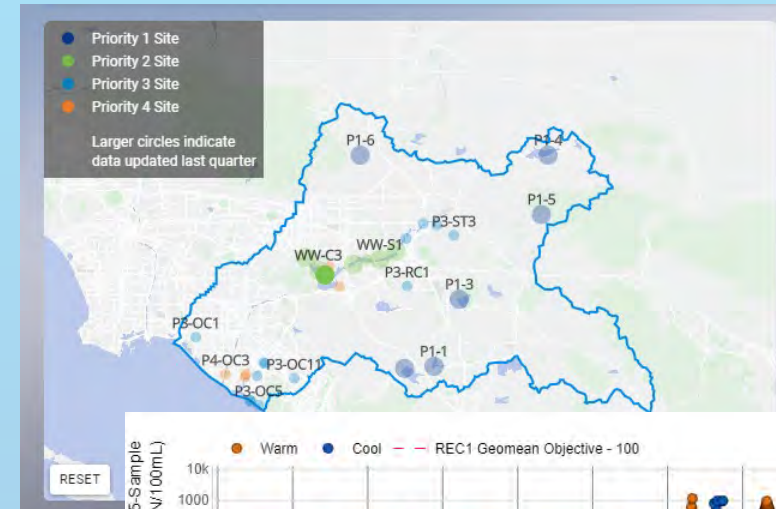
## Middle Santa Ana River Bacteria TMDL Task Force

- San Bernardino County Flood Control District representing the Cities of
  - Cities of Chino, Chino Hills, Fontana, Montclair, Ontario, Rancho Cucamonga, Rialto, and Upland
- County of Riverside
- City of Claremont
- City of Corona
- City of Norco
- City of Pomona
- City of Riverside
- Agricultural Operators represented by Chino Basin Watermaster Agricultural Pool



# Santa Ana Regional Monitoring Program Data Viewer

- No additional cost effort by CDM Smith
- Replaces tabular quarterly reports with on-line data dashboard
- Includes complete record of regional bacteria data
- Provides more robust analyses of the data to demonstrate compliance for stakeholders including:
  - interactive graphical user interface
  - complex plots and maps to support analyses of data
- Regional Board supportive of the dashboard tool



**WW-M6 - Mill-Cucamonga Creek below Wetlands**  
Priority 2 Site Waters Subject to an Existing TMDL

Data Inventory  
**UPDATED LAST QUARTER**

Param	E. coli	Enterococcus
Count	157	0
Earliest Date	2016-03-06	N/A
Latest Date	2021-06-30	N/A

2021-06-30 5:23

[EXPLORE FURTHER](#)


# SAWPA


Santa Ana Watershed Project Authority  
Santa Ana Regional Monitoring Program Data Viewer

An online data viewer and access portal for bacteria data collected in the inland waters of the Santa Ana River watershed. Data are updated quarterly and are submitted to the [CEDEN database](#) after they are uploaded here.

If you would like early access to this tool, you may contact Rick Whetsel at [sawpa.org](http://sawpa.org) or 951-354-4221 for more information.

## Sign In

 sawpa

 .....

Remember Me

LOGIN



# Recommendation

It is recommended that the Commission receive and file this information report on the Regional Water Quality Monitoring Task Force and its effort to replace tabular quarterly reports with an online data reporting dashboard.



# Questions





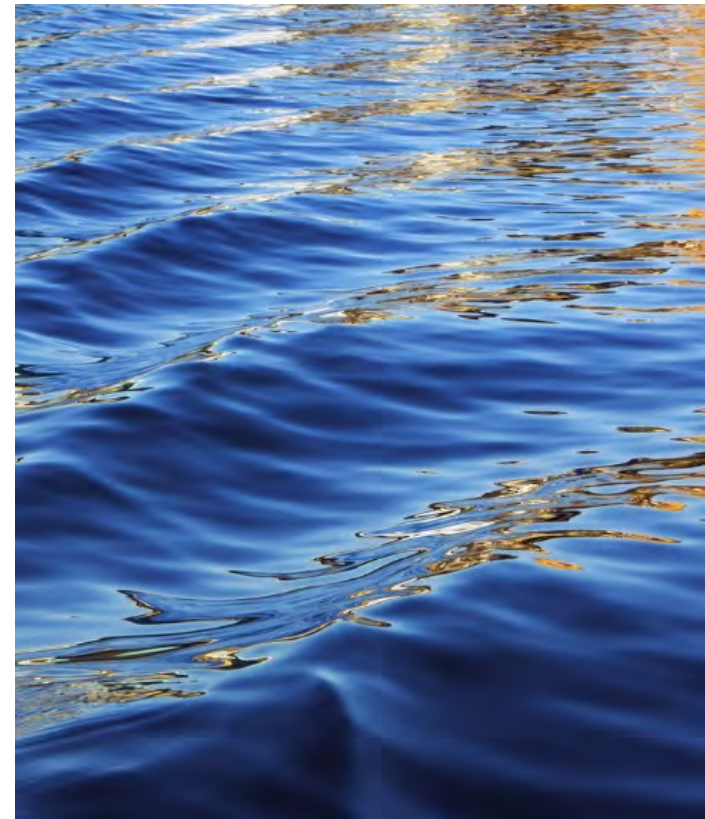
# Santa Ana River Watershed Weather Modification Pilot Program Status Report

Mark Norton, Water Resources & Planning Mgr.  
Santa Ana Watershed Project Authority  
Item No. 6.D.





# Review & Background





# Cloud Seeding Mechanisms



# Ground Based Seeding Methods



## CNG's (Cloud Nuclei Generators)

- Ideal for orographic lift (movement of air over mountain barriers)
- Create a continuous plume
- Inexpensive to install and operate

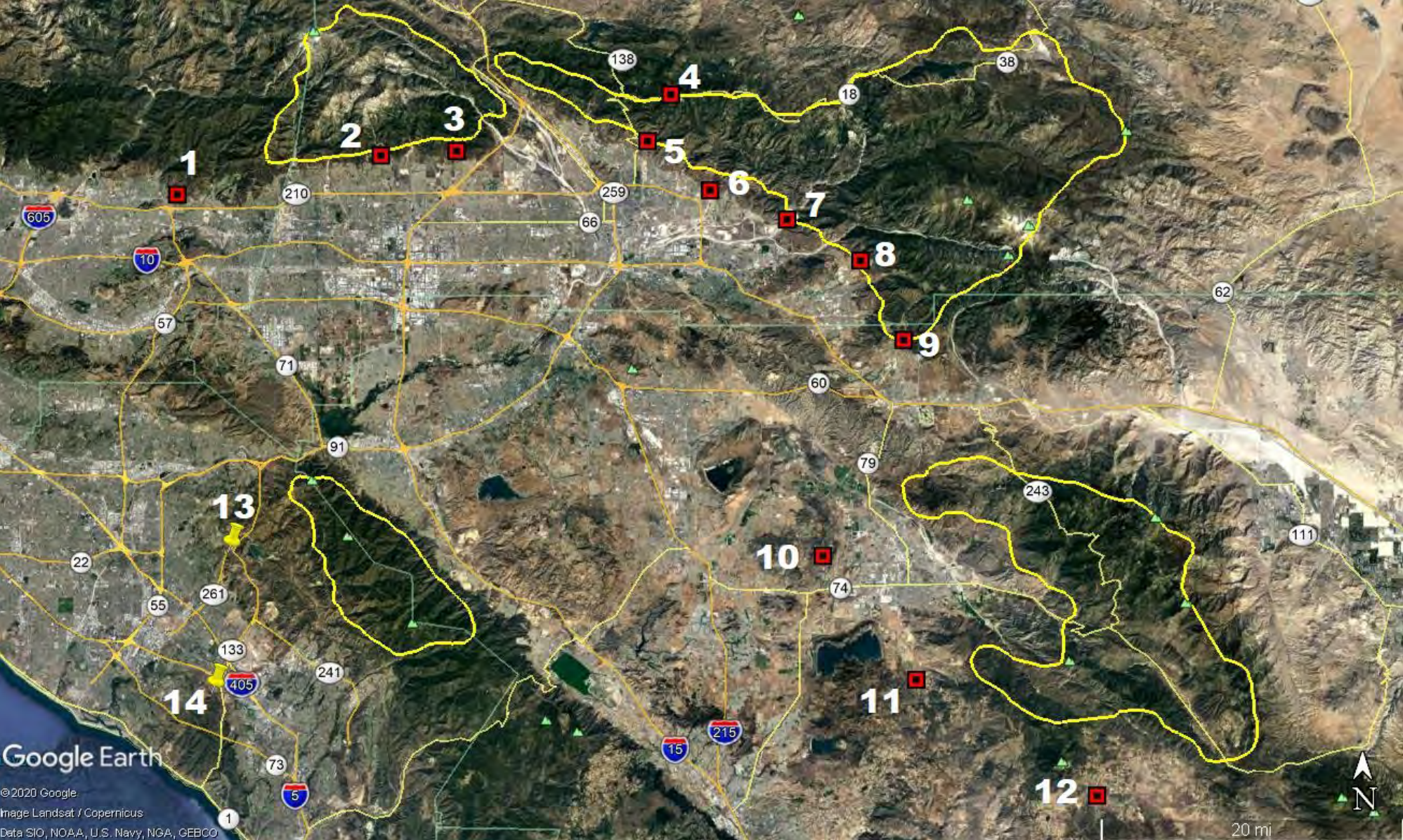
## AHOGS (Automated High Output Ground Seeding) Systems

- Deliver a higher concentration of Silver Iodide – rapid release
- Operated remotely
- Ideal for storms with convective attributes (turbulence)





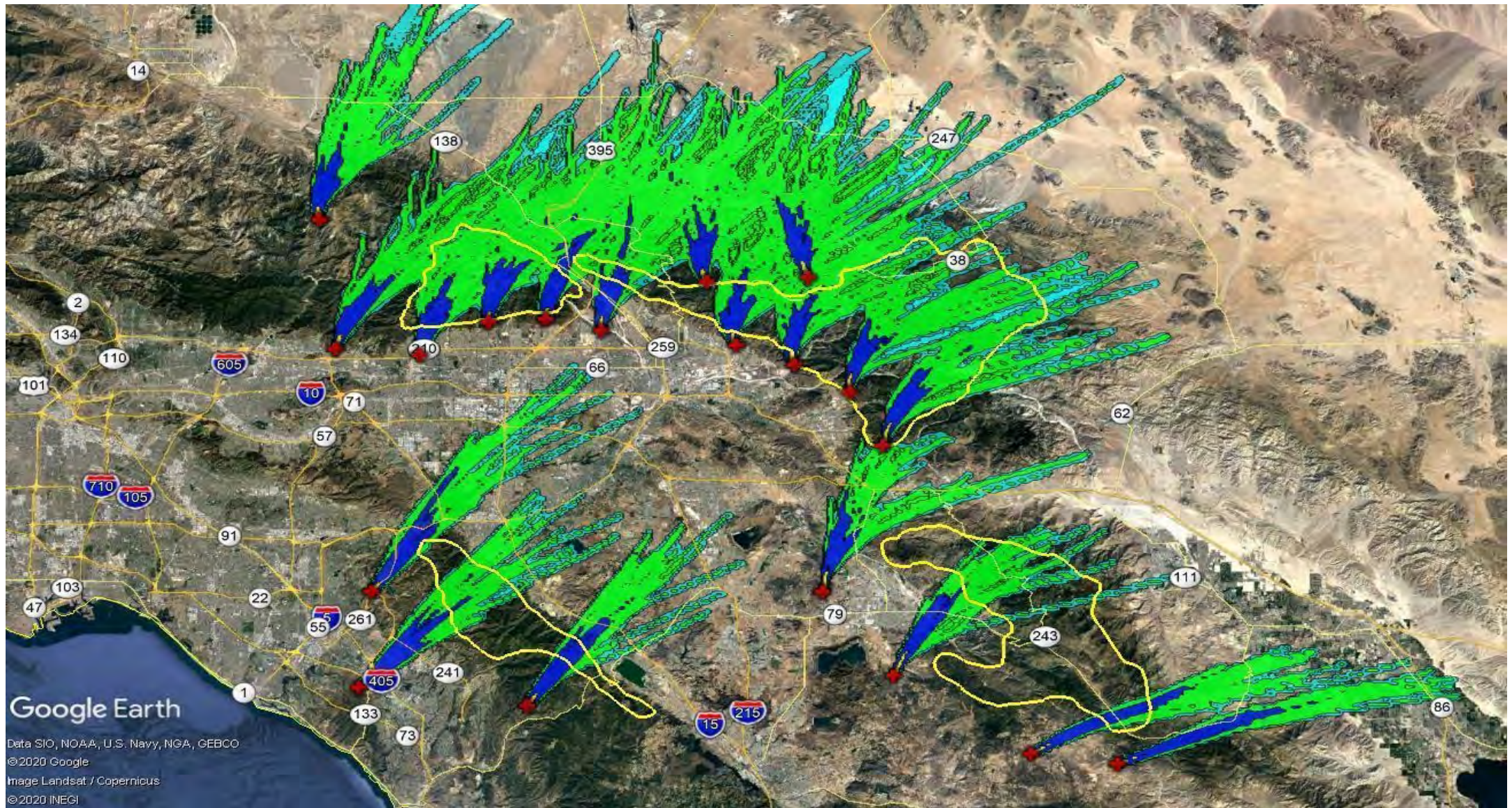
# Refined – Ground Seeding Sites



Yellow Pins = AHOGS  
Red Bullseyes = CNG's



# Ground Based Seeding Dispersion Model





# Total Average Annual Projected Increases

## Ground Only Seeding

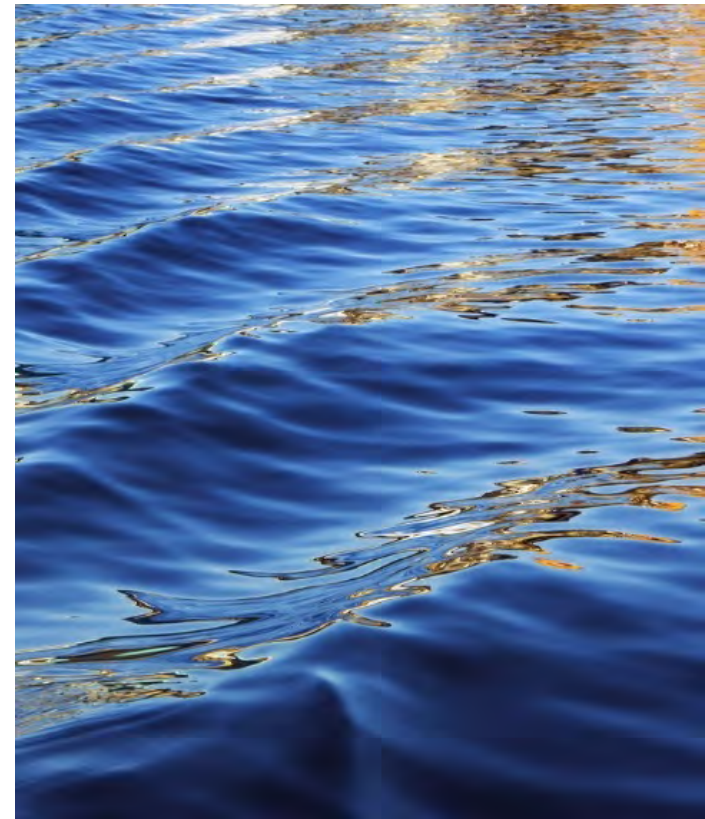
Target Area	Seasonal Precip. Increase (inches)	Percent Increase	Avg. Natural Streamflow (AF)	Streamflow Increase (AF)	Percent Increase
NW	0.41	3.5%	25,000	2,043	8.2%
NE	0.49	4.1%	65,000	4,330	6.7%
SW	0.59	3.7%	5,000	447	9.0%
SE	0.49	4.5%	10,000	1,373	13.7%
<b>TOTAL w/ Ground Only</b>			<b>105,000</b>	<b>8,193</b>	<b>7.8%</b>

## With Aerial Support in the NE Target\*

Target Area	Seasonal Precip. Increase (inches)	Percent Increase	Avg. Natural Streamflow (AF)	Streamflow Increase (AF)	Percent Increase
NW	0.41	3.5%	25,000	2,043	8.2%
<b>NE*</b>	<b>0.89</b>	<b>7.3%</b>	<b>65,000</b>	<b>7,772</b>	<b>12.0%</b>
SW	0.59	3.7%	5,000	447	9.0%
SE	0.49	4.5%	10,000	1,373	13.7%
<b>TOTAL</b>			<b>105,000</b>	<b>11,635</b>	<b>11.1%</b>



# Suspension Criteria



# Cloud Seeding Suspension Criteria



## National Weather Service (NWS)

- Whenever the NWS issues a severe storm, precipitation, flood warning or flash flood warning that affects any of the target areas, the project meteorologist will suspend operations for parts or all of the program.

## Southern Target Areas

- Due to concerns related to infrastructure, consultant suggests suspending operations when:
  - Hourly precipitation is forecasted to exceed 0.5 or 0.7 inches
  - 24-hr precipitation totals are forecasted to exceed 2-3 inches.
  - Thresholds correspond to events that occur on average once every 2-5 years.

# Cloud Seeding Suspension Criteria

## Forest Fires

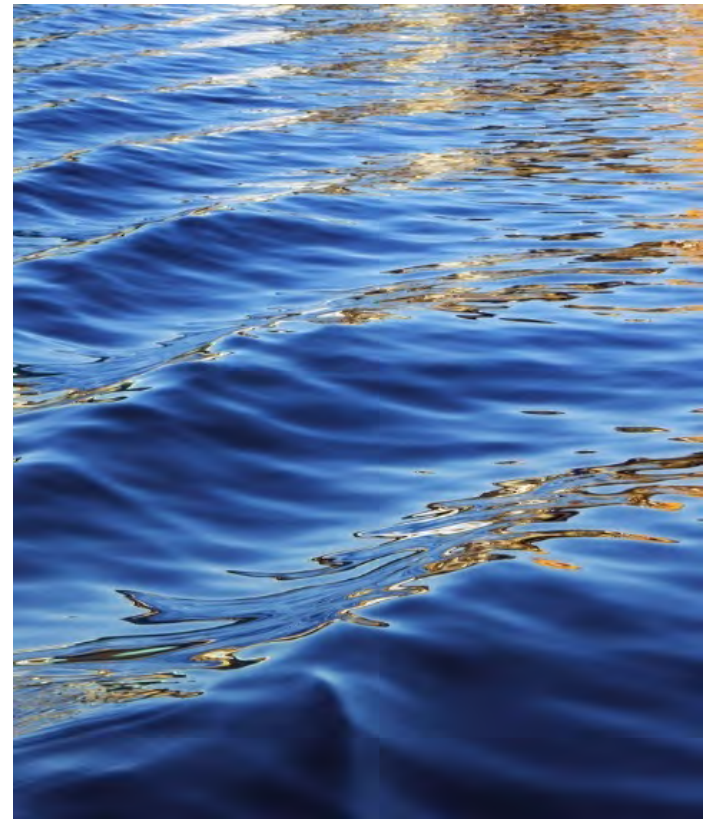
- Considerations
  - Size
  - Location
  - Vegetation
  - Soil Attributes (glassing)
  - Flood Risk
  - Debris Flow







# Technical Feasibility



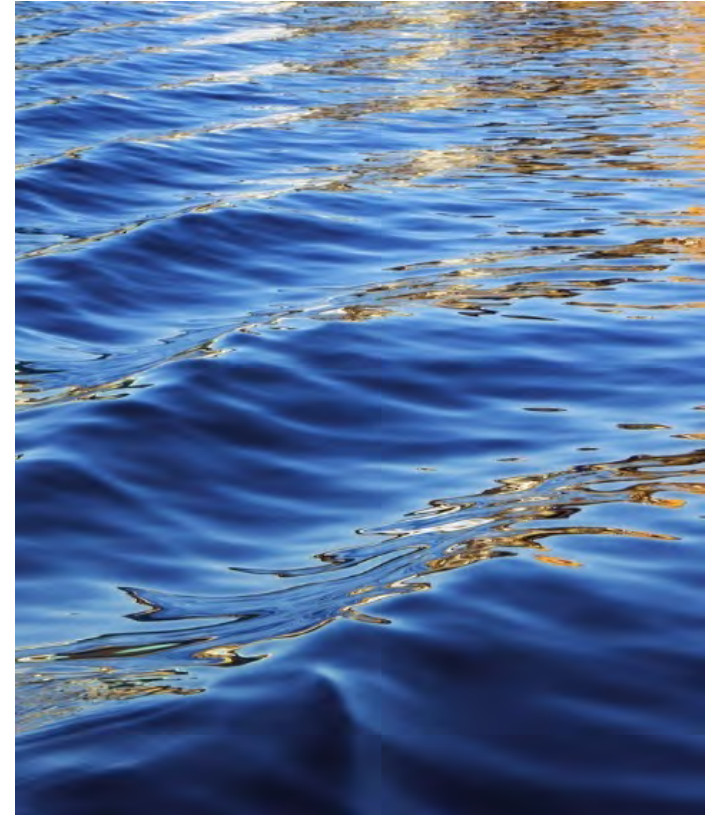


# Technical Feasibility

- Considerations included:
  - Results obtained from previous winter research and operational cloud seeding programs (i.e., scientific data).
  - Detailed climatology review of the region, including storm attributes and atmospheric behavior
  - Watershed geographical and topographical attributes
  - Equipment requirements and possible siting locations
- Feasibility Report Finding:
  - *A program in the Santa Ana Watershed following the proposed design in the feasibility report is technically feasible.*



North American  
Weather Consultants





# Economic Feasibility and Cost Effectiveness

# Economic Feasibility



- General Recommendation:
  - “Guidelines for Cloud Seeding to Augment Precipitation” (ASCE, 2016)
  - Minimum **benefit to cost ratio of 5:1** to justify economic feasibility based on a positive return due to natural seasonal variability
- California Seasonal Variability Recommendation:
  - Due to high seasonal variability, a **10:1 benefit to cost ratio** can accommodate drier seasons
- Assumptions:
  - Costs were compared to untreated and unpressurized imported water reflecting an average watershed wide value of **\$255 per acre-foot** (a conservative assumption)
  - For aerial component, use a **multiplier of 0.9** to the project yield to account for missed flight opportunities (a conservative assumption)



# Estimate for Pilot – Ground Based Seeding Only

	Rate	Frequency	
<b>Annual Operations</b>			
Set Up	\$ 33,500	1	\$ 33,500
Take Down	\$ 24,000	1	\$ 24,000
Reporting	\$ 10,000	1	\$ 10,000
<b>Monthly Operations</b>			
Fixed Services	\$ 24,500	5	\$ 122,500
<b>Variable Items (timed expenses are billed on a per hour basis)</b>			
Ground Flares	\$ 110	60	\$ 6,600
Generator Run Time	\$ 19.50	600	\$ 11,700
Flight Time	\$ 375	N/A	-
Aerial Flares	\$ 110	N/A	-
<b>TOTAL</b>			<b>\$ 208,300</b>
<b>COST PER ACRE-FOOT</b>			<b>\$ 25.42</b>
<b>Benefit to Cost</b>			<b>10.03</b>

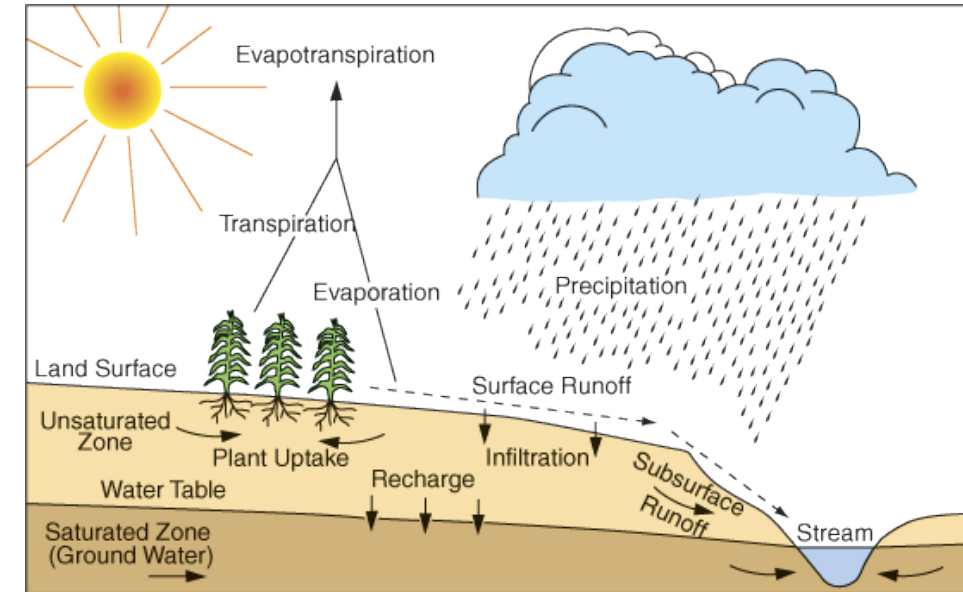
**Cost per acre-foot (AF) =**  
 Total Program Cost / Estimated AF produced  
**\$208,300 / 8,193 AF (slide 7) = \$25.42 per AF**

**Benefit to Cost Ratio =**  
 Cost of Untreated Imported Water per AF /  
 Cost of Cloud Seeding per AF  
**\$255 per AF / \$25.42 = 10.03**

\* Additional Validation & Effectiveness Costs for Pilot are not reflected

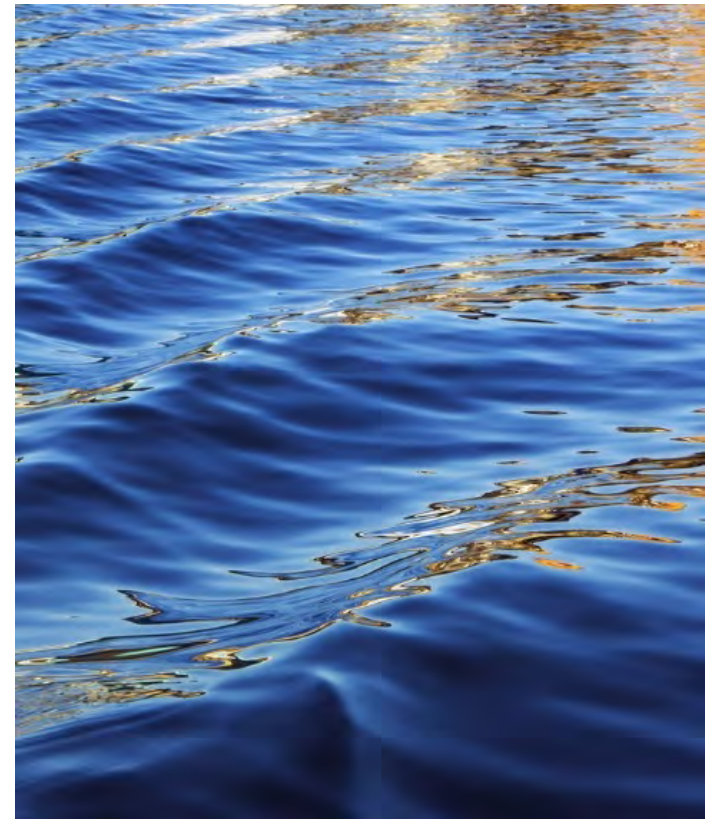
# Value to Watershed

- Estimated cost of water: **\$25.42 per AF**
  - Based on cost of \$208,300 and 8,192 AF produced
- 8,193 AF equates to a value of **\$2.1 million** based on imported water costs (\$255 per AF)
- Equate to a **benefit to cost ratio of >10**
- Benefits:
  - More water recharged into groundwater basins, or
  - Reduction in buying imported water for recharge
- Consideration:
  - A SAWPA Prop 1 IRWM Round 2 grant application for the pilot would reduce costs for the multi-year pilot program (based on 50% grant – 50% local share)





Next Steps



# SAWPA Commission Previously Approved Action (April 6, 2021)



1. Authorize proceeding with the ground seeding site selection analysis and CEQA Development in FY 21-22;
2. Authorize staff to prepare a watershed wide SAWPA project application for Prop 1 Round 2 seeking 50% grant funding for a multi-year pilot scale watershed weather modification program; and
3. Direct staff to perform outreach to seek additional funding partners



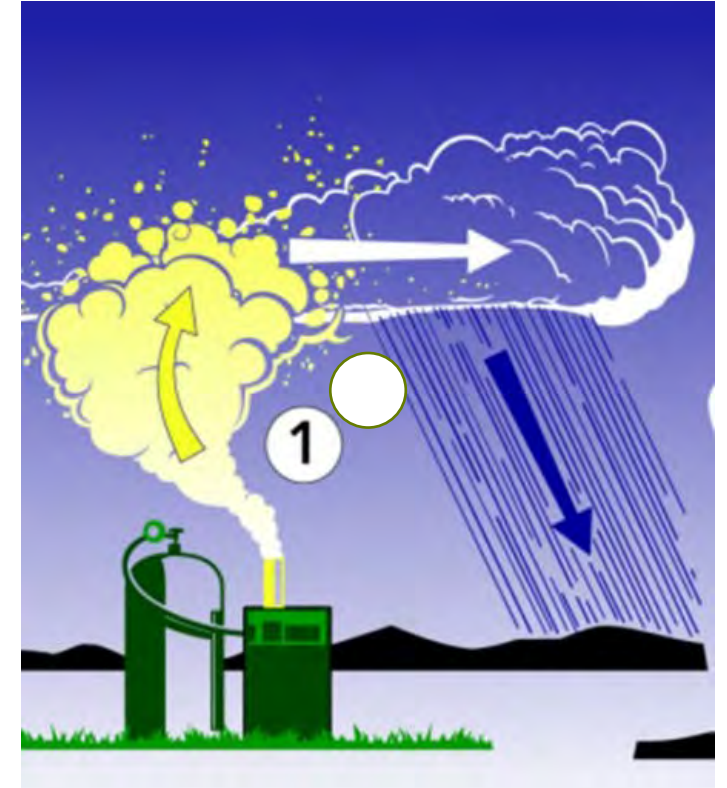
# Ground Seeding Locations Analysis Status

Consultant: North American Weather Consultants

Cost: \$15,400

Providing all personnel, equipment, and services to:

- Select locations for ~16 ground seeding sites
- Contact public water agencies to ensure that operations from the location are feasible
- If a site cannot be located within a 2-mile radius of the designated location in feasibility study, consultant will identify replacement sites
- Prepare a project summary report detailing the locations identified by consultant



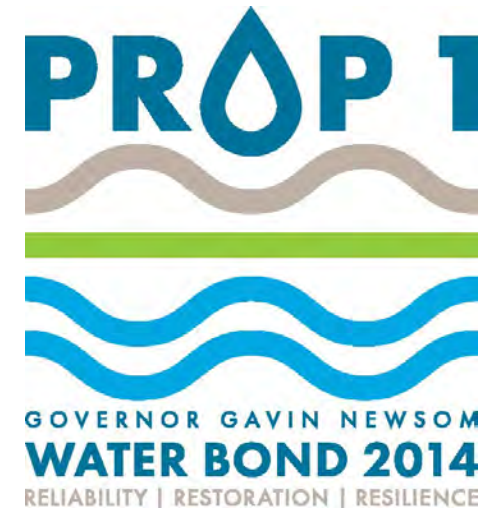
# California Environmental Quality Act – Mitigated Negative Declaration Analysis - Status

- July 15, 2021: Request for Proposals released
- August 26, 2021: Four proposals received
- Consultant Proposal Review Panel composed of:
  - SAWPA staff
  - OCWD CEQA expert
  - EMWD CEQA expert
- Last week of September 2021: Interviews scheduled
- October 19, 2021: General Services Agreement and Task Order will to be brought to the SAWPA Commission
- North American Weather Consultants will assist CEQA consultant to provide context, feedback and basic assistance.



# Proposition 1 Round 2 IRWM Implementation Grant Application - Status

- SAWPA staff is waiting for Proposal Solicitation Package (PSP) for this round of grant funding from DWR
- Next Steps:
  1. OWOW Steering Committee and SAWPA Commission approves selection criteria
  2. SAWPA completes Call for Projects submittal for Weather Modification Pilot.
  3. Update Pilot program costs to reflect validation of effectiveness
  4. Seek 50% local share commitment to match 50% grant request by Jan-Feb. 2022
- Typically, DWR does not require completion of pilot CEQA until 18 months after grant







# Recommendation

- Staff recommends that the SAWPA Commission receive and file this status report regarding the authorized ground seeding site selection analysis, CEQA preparation, a Prop 1 Round 2 IRWM grant application preparation for a multi-year pilot scale watershed weather modification program and outside funding outreach support



# Headwaters Resiliency Partnership Overview

Ian Achimore | Senior Watershed Manager

Commission Meeting | Agenda Item 6.E.

September 21, 2021

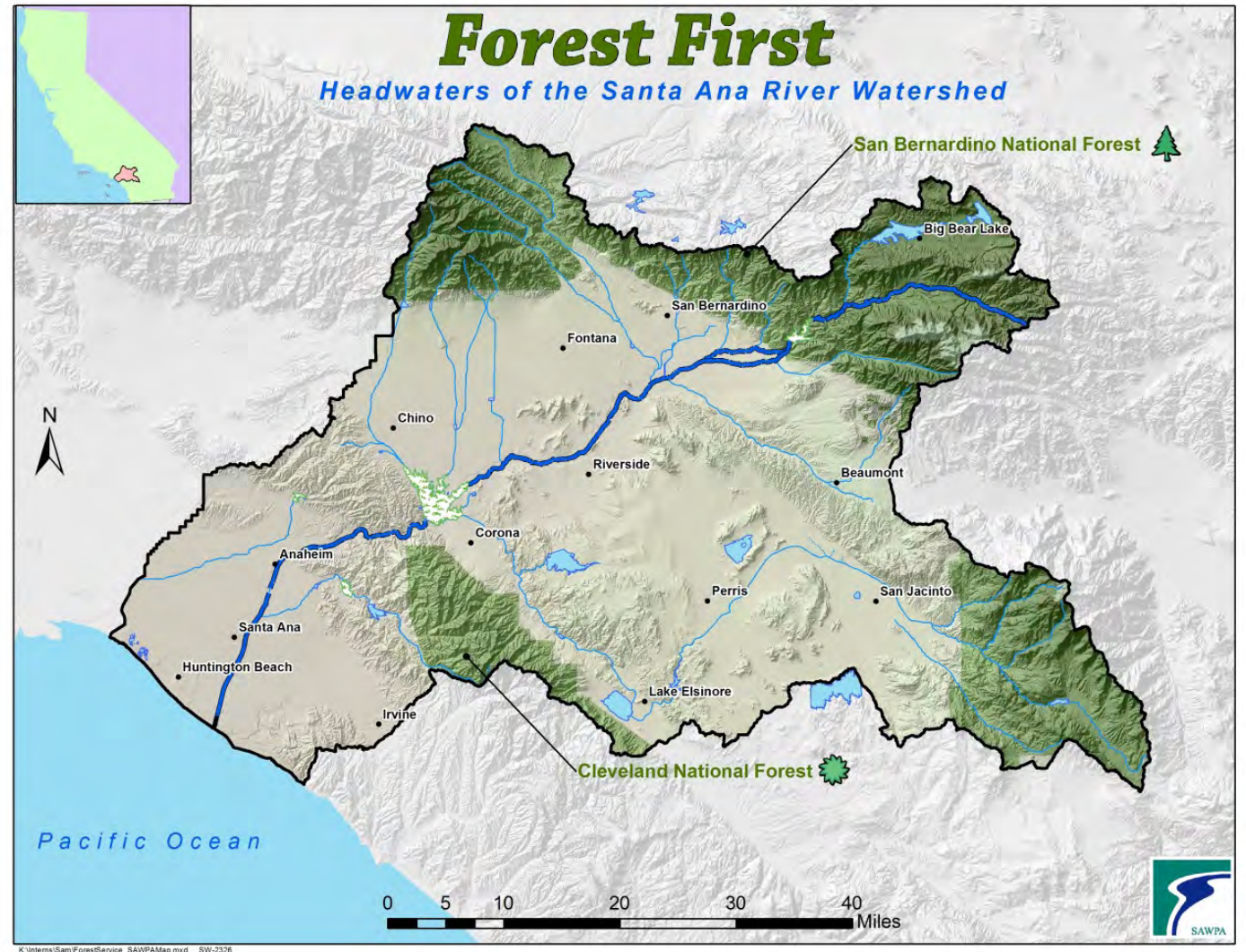


# Overview of Presentation

- ▶ Background on SAWPA Forest First Program,
- ▶ Headwaters Resiliency Partnership and SBVMWD, and
- ▶ Possible partnership role for SAWPA.

# Background

- ▶ Approximately 30% of watershed managed by U.S. Forest Service,
- ▶ Estimated that 90% of the annual precipitation falls on headwaters, and
- ▶ This data led to the creation of the Forest First program in 2011 with the signing of the first Forest First MOU with the Cleveland and San Bernardino National Forests.



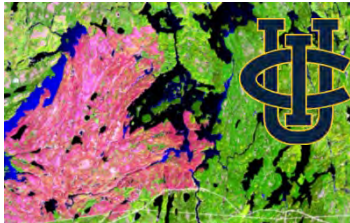




# Actions Under 2011 MOU



- ▶ *Valuation of Benefits of Forest Management Practices in the Santa Ana Watershed (2012);*



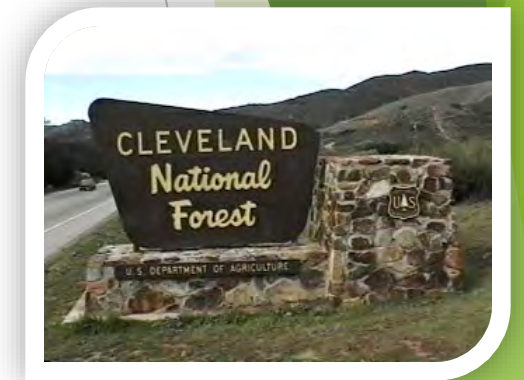
- ▶ San Bernardino National Forest's success in acquiring a \$1M Prop 84 Round 2 grant (2014);
- ▶ Acquiring the assistance of UC Irvine researcher Dr. Michael Goulden to evaluate the water supply benefit of Round 2 Project(2014);



- ▶ Coordinating with the San Bernardino National Forest and the U.S. Department of Agriculture to demonstrate the on-site conversion of woody debris to biomass

# Actions Under the 2017 MOU

- ▶ Coordination with Blue Forest Conservation and other potential partners such as flood control district and City of Lake Elsinore (2017),
- ▶ Cleveland National Forest Project - Santa Ana Mountain Fuel Break acquired \$497k in Prop 1 Round 1 grant funding (2020), and
- ▶ Coordination with the National Forest Foundation and San Bernardino National Forest (Ongoing).

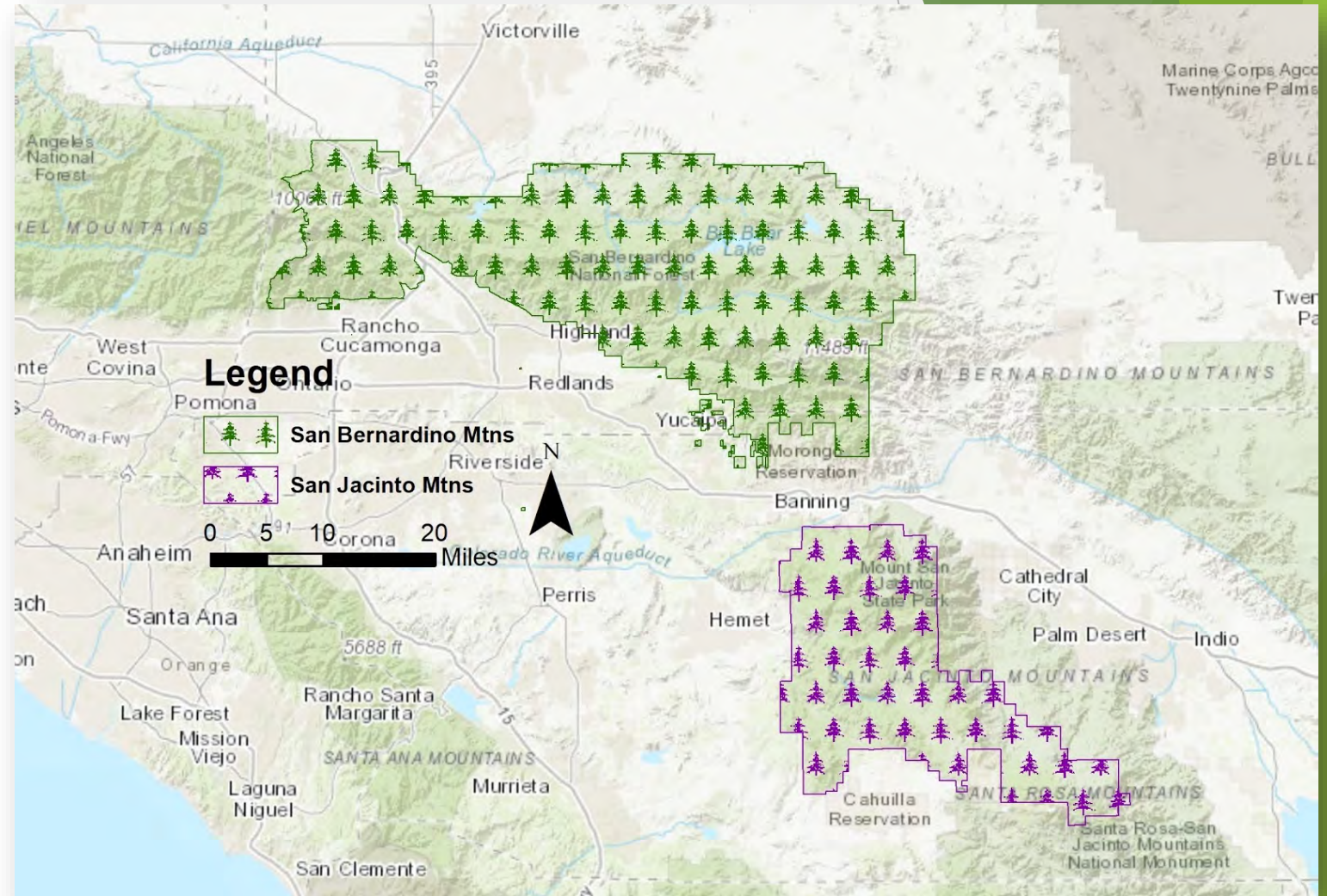


FOREST  
FIRST

## Draft Partnership Boundary



# Headwaters Resiliency Partnership

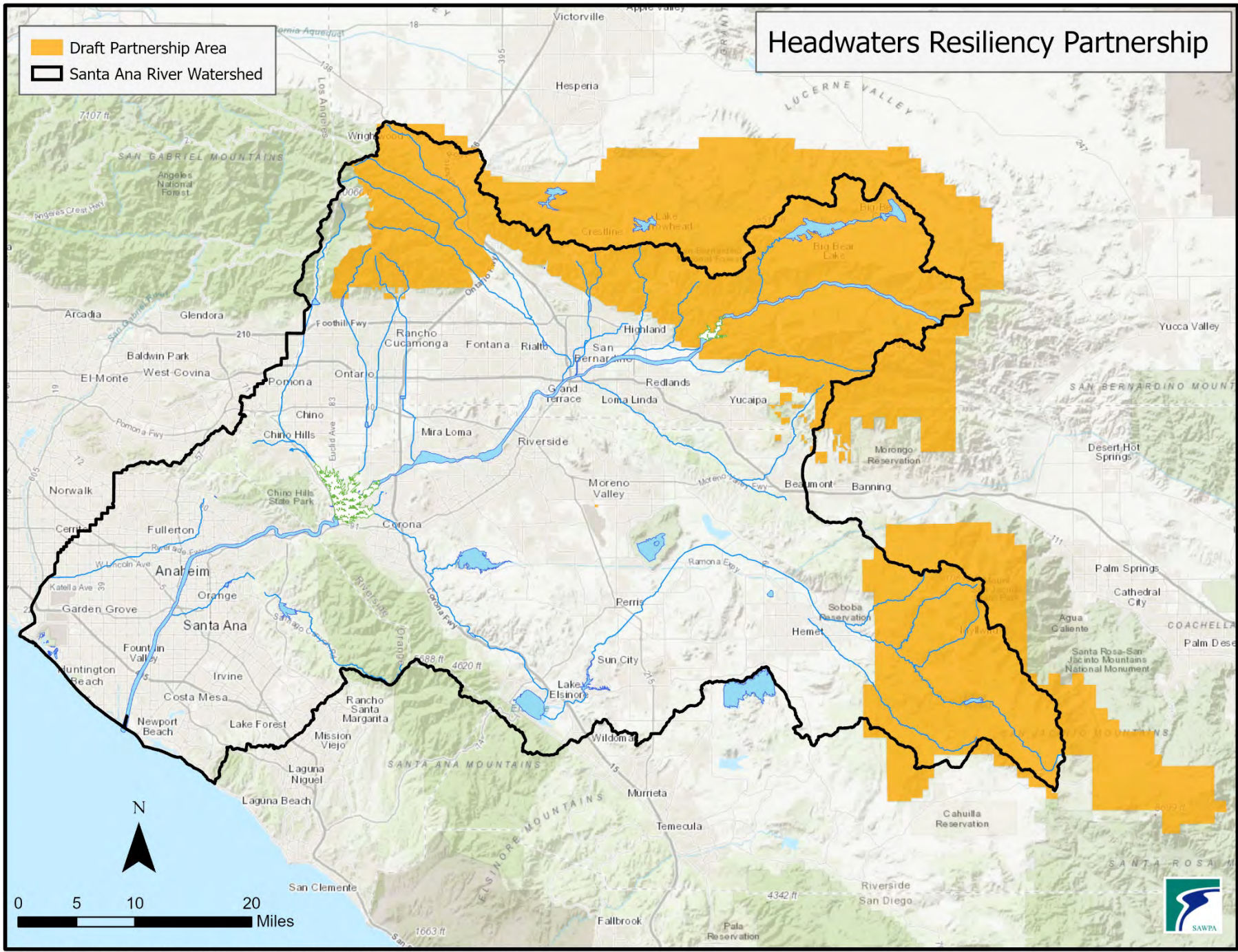
- ▶ Initiative led by SBVMWD that began in late 2020, and
- ▶ Focused on making forests resilient to various threats such as drought and catastrophic fire.





# Headwaters Resiliency Partnership

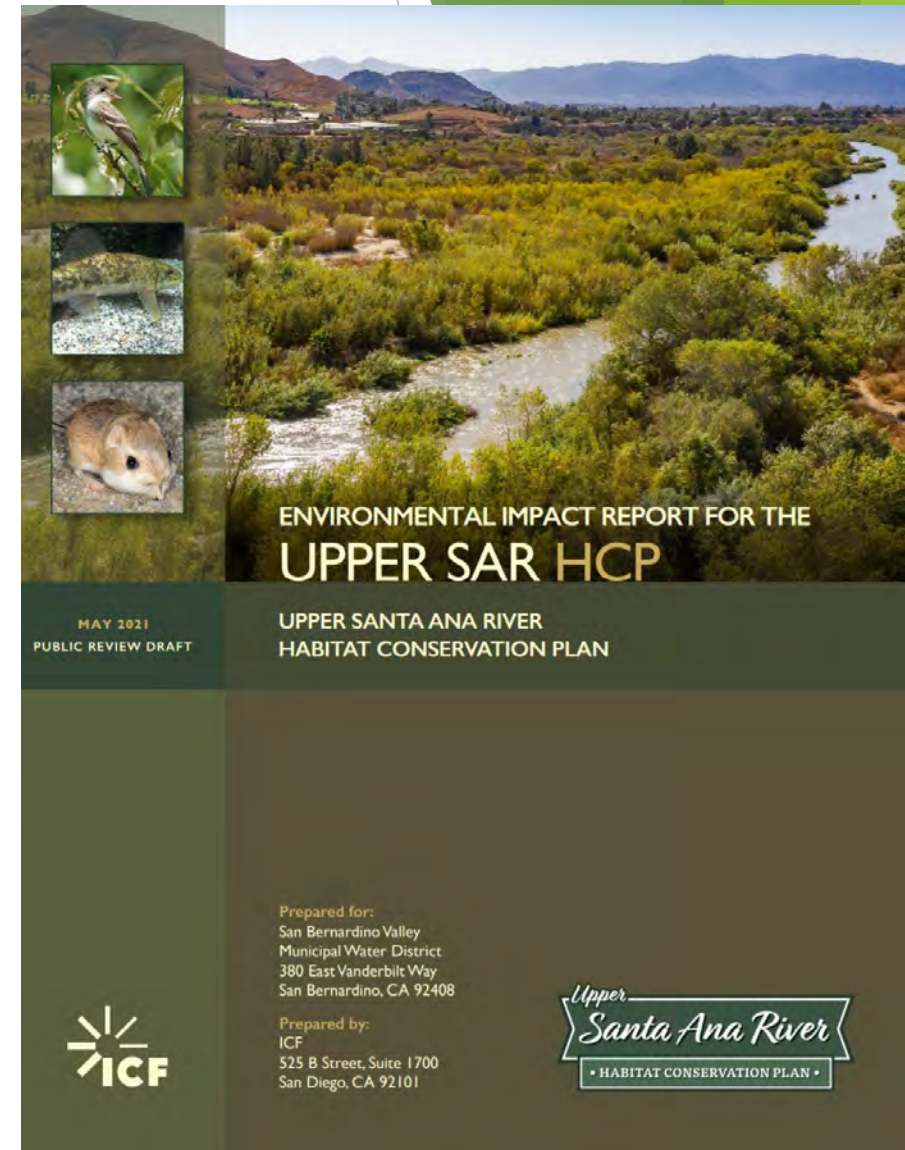
-  Draft Partnership Area
-  Santa Ana River Watershed



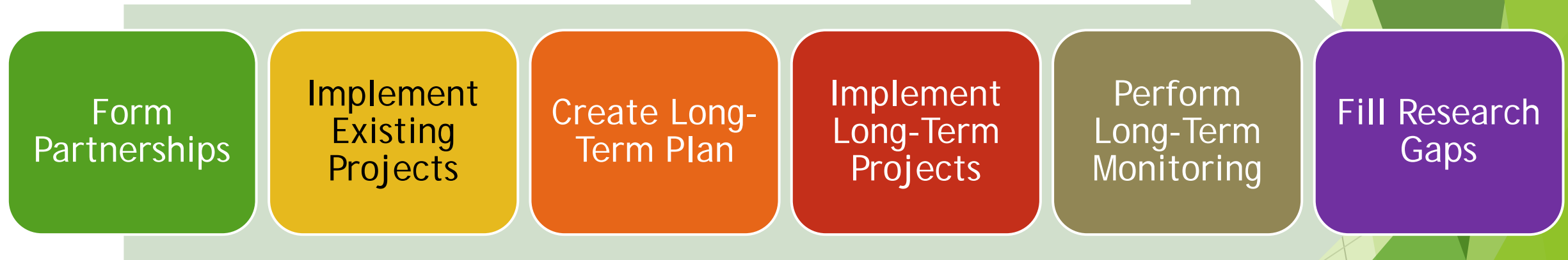


# SBVMWD and Need for Headwaters Management

- ▶ \$450 million of groundwater recharge projects within Upper Santa Ana River (SAR) Habitat Conservation Plan,
- ▶ Watershed needs to be protected and improved, and
- ▶ Many sub-watersheds within Upper SAR Watershed are characterized as “impaired.”



# Major Activities of the Headwaters Resiliency Partnership Under Discussion





# Headwater Resiliency Partnership Entities Working Closely on Initial Stakeholder Workshop



# Draft Work Plan for Partnership



#	Task Description
1	Partnership agreement management and invoicing
2	Develop Long-Term Resiliency Plan
3	Review existing programs, plans and protocols
4	Historical ecology study
5	Community engagement and education
6	<b>Funding plan</b>
7	Staffing augmentation (consultants, SBVMWD project management)
8	Monitoring and reporting program (environmental conditions)
9	Prioritization analysis
10	Compliance program (CEQA/NEPA/Permits)
11	Restoration and adaptive management
12	Research list

- Two possible roles for SAWPA. #1 task is like SAWPA's task force role.
- Consultant could likely be hired (managed by SAWPA) for #6 task.

# (Draft) Contents of a Long-Term Resiliency Plan

- ▶ Overall goals and objectives, and a prioritized list of tasks;
- ▶ Identify gaps that need to be filled
  - ▶ Existing programs, plans, priorities, and protocols;
  - ▶ Research;
  - ▶ Permits, compliance documents;
- ▶ A communication and public outreach plan to involve stakeholders
  - ▶ Internal communications;
  - ▶ Public outreach;
  - ▶ Marketing;
- ▶ A historic/existing conditions analysis of program area;
- ▶ A long-term monitoring protocol to track efficacy of projects and prioritize management actions;
- ▶ Compliance planning for CEQA/NEPA, permitting; and
- ▶ A funding strategy to implement and sustain the long-term viability of the program.





# Short Term Projects

1. Moonridge,
2. North Big Bear, and
3. Santa Ana Watershed Hazardous Fuels Reduction and Forest Health.



Jenks Lake within the Santa Ana Watershed Project Area

## ► Information about projects:

- All projects take place primarily on US Forest Service land.
- First two are community protection projects.
- Santa Ana Watershed project is largest at 37,000 acres.

# Recent Stakeholder Workshops

Held August 17 and 19, 2021

## Agenda:

- 1** Introduction: opening remarks, logistics, shared commitments, agenda **(15 min)**
- 2** Setting the stage: Participants and resource areas of interest **(15 min)**
- 3** Exercise 1: Start at the End - Describe Vision and Common Goals **(25 min)**
- 4** Exercise 2: Idea Generation Around Resiliency Planning **(35 min)**  
Resiliency? What is needed to reach it? Key obstacles and challenges
- 5** Share Ideas: Report-out on exercise 2 **(20 min)**
- 6** Closing: Final Reflections & What's Next **(10 min)**

# Workshop participants voted on the top 3 goals for resiliency partnership.

The three with the most votes were selected for discussion in the next exercise in the workshop.

Goals	Number of votes
Restore natural fire regimes for climate adaptive and resilient forest	14
Adaptive and effective management	13
Diverse, healthy, fire resilient native ecosystem	9
Single comprehensive management document	5
Protect and increase water resources	3
Community and resident resilience	3
Balance consumption with forest health	2
Sustainable recreation	2



# Workshop participants identified various ways they could contribute to the resiliency partnership:



Contribution opportunity	Number of people
Finance	7
Data	3
Human resources	5
Field researchers	3
Community connections	6
Data application tools	1
Institutional collaboration	11

# Stakeholder Workshop Participants

## San Bernardino Valley MWD

- Heather Dyer
- Joanna Gibson
- Kai Palenscar
- Chris Jones
- Susan Longville
- Kirsten Wallace

## Inland Empire RCD

- Susie Kirschner

## National Forest Foundation

- Dania Gutierrez
- Brian Robey

## Santa Ana Watershed Project Authority

Ian Achimore

## San Bernardino National Forest

- Jason Collier

## San Bernardino National Forest (continued)

- David Cruz
- Danelle Harrison
- Kay Wiand
- Marc Stamer

## Southern California Edison

- Genevieve Cross
- Joel Boggus
- Joseph Williams

## California Department of Fish & Wildlife

- Kim Romich
- Edith Martinez

## Cal State University San Bernardino

- Jennifer Alford

## Chino Basin Watermaster

- Justin Nakano

## Coastal Conservancy

- Greg Gauthier

## Dickinson Associates

- Mary Ann Dickinson

## Fisheries Resource Volunteer Corps

- Sherri Craig

## Inland Empire Community Foundation

- Celia Cudiamat

## Inland Empire Utilities Agency

- Sylvie Lee

## Inland Empire Waterkeeper

- Ray Hiemstra

## Mojave Desert Resource Conservation District

- Dana Raponi

# Stakeholder Workshop Participants (Continued)

## Morongo Band of Mission Indians

- Kimberly Miller
- Molly Earp

## Mountain Rim Fire Safe Council

- Laura Dyberg

## Running Springs Water District

- Ryan Gross

## San Jacinto Basin Resource Conservation District

- Brett Mills

## Sierra Club

- Steven Farrell

## Stanford University

- Roberta Tugendreich
- Courtney Ryder Hammond Wagner
- Aakash Ahamed
- Newsha Ajami

## US Fish & Wildlife Service

- Karin Cleary-Rose
- Rebecca Christensen

## Visit Big Bear

- Michael Perry

## Independent Participants

- Mark Adelson
- Kathleen Edwards
- Carol Snow
- Joel Gerwein

## Independent Participants (continued)

- Joel Gerwein
- Jonar Rodrigo
- Jonathan Contreras
- Michael Morphew
- Peter Satin
- Rosemary Knight
- Shujuan Mao
- Steve Loe

## ICF (facilitator)

- Erika Britney
- Scott Fleury
- Robert Kay
- Haroon Aslam
- Jennifer McAdoo
- Jamie Liu

# SAWPA's Next Steps

- ▶ Present to the SAWPA Commission staff costs and time to partner with SBVMWD on this effort,
- ▶ Present possible sources of funding for reimbursement of this work, and
- ▶ SAWPA Commission to make decision regarding SAWPA's involvement.



# Recommendation

- ▶ Receive and file.