

# Grant Support for Small Community Water/Wastewater Systems Serving Disadvantaged Communities in the Santa Ana River Watershed



**Mark Norton, Water Resources & Planning Manager  
SAWPA Commission | August 17, 2021  
Item No. 6.A.**



# Assistance Fund for Small Systems that serve DACs

- **Purpose:** Provide support for small systems with chronic issues that lack the staffing and technical expertise to apply for grants
- **Scope of Assistance:**
  - Assemble project information
  - Prepare OWOW and DWR grant applications
- **Outcome:**
  - Prepare Prop 1 Round 2 IRWM grant applications for up to ten small systems serving DACs



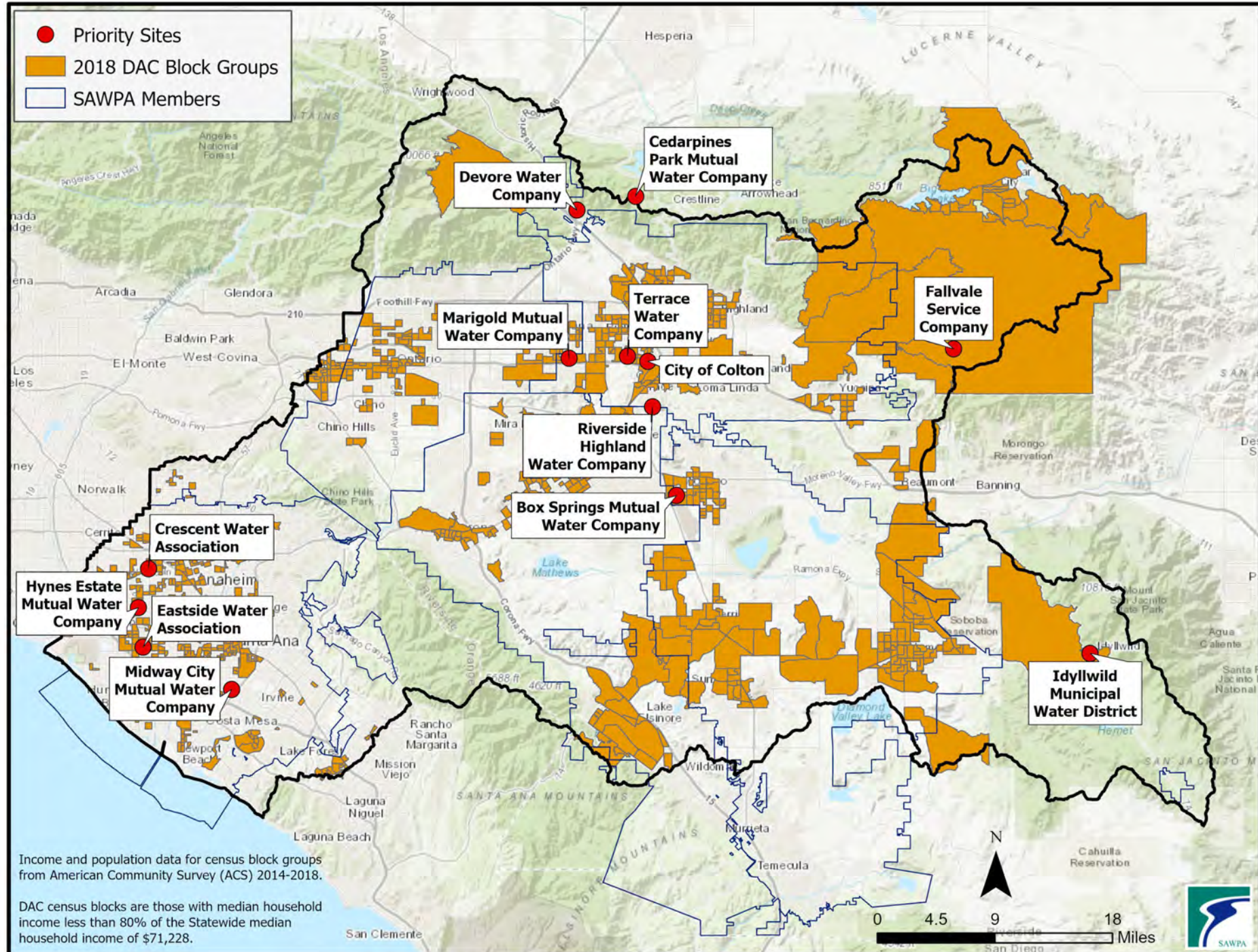
# Assistance Fund – Proposal Overview

- Build on information from SAWPA's recently completed Disadvantaged Communities Involvement (DCI)
- Partner with Cal Rural Water Association (CRWA)
  - CRWA would assist in preparing grant applications
- Prepare applications for up to 10 small systems (with DACs) for OWOW Prop 1 Round 2





# High Need Small Systems supporting DACs in watershed





# Proposal Schedule - Draft\* Round 2 (R2) Schedule



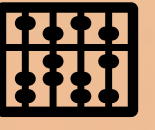
**Steering Committee approves Prop 1 Policy**

Nov 2018




**DWR Releases Draft R2 Grant Guidelines**

Aug 2021


**Scoring Criteria Adopted by Steering Committee**

Sep 2021




**OWOW R2 Call for Projects**

Oct 2021 - Jan 2022

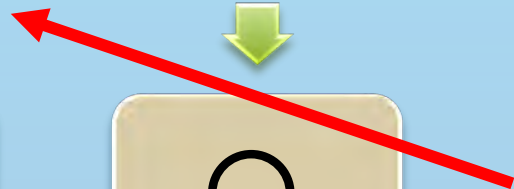



**DWR Releases Final R2 Grant Guidelines**

Dec 2021



Small Community Water/Wastewater System-Grant applications due




**SAWPA finalizes R2 grant agreement**

Feb 2023




**R2 Application Submittal to DWR**

Sep 2022




**Steering Committee Approves R2 Projects**

Mar 2022




**Staff Review & Participatory Budgeting**

Jan 2022



# Proposed Grant Application Support

- Budget estimate:
  - Up to \$150,000 for up to 10 applications
- CRWA has worked with 6 communities through SAWPA's DCI Technical Assistance program
  - The 6 communities are within or near three SAWPA member agency service areas
- Additional small communities in the watershed also may be ready to apply for grant funding



# Proposal Options, Costs, and Member Agency Share

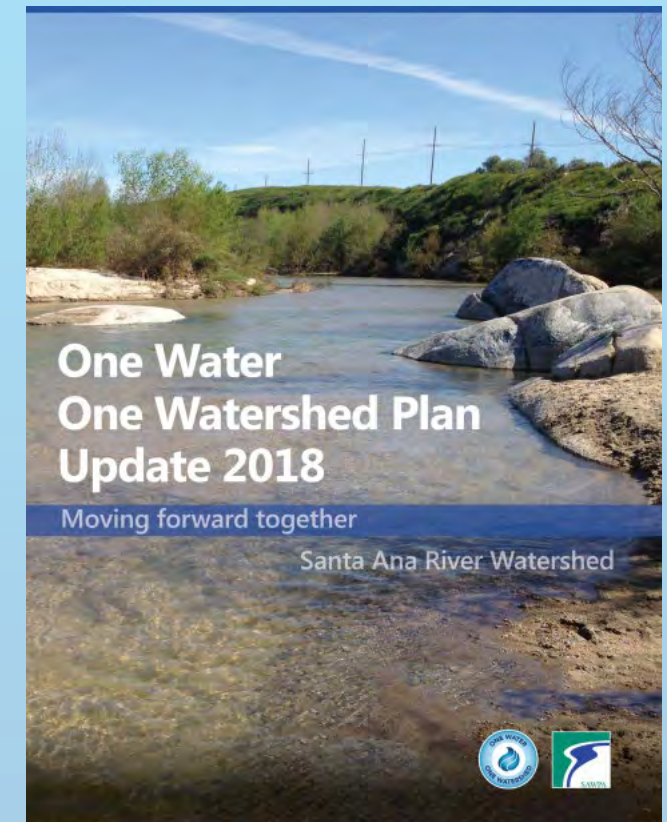
Option	Total Cost Estimate	SAWPA Member Agency Cost	Support Timing
1 – No project	\$0	\$0	
2- Equal share	\$150,000	\$30,000	Thru Sept. 2022
3- Proportionate share	\$150,000	\$69,250 SBVMWD \$46,150 OCWD \$17,300 EMWD \$17,300 WMWD \$0 IEUA	Thru Sept. 2022

SAWPA does not intend to reflect future costs related to project implementation; however, this topic has been raised as a potential issue



# Assistance Fund - Benefits

- Builds on outcomes of the SAWPA's Prop 1 IRWM DCI program
- Supports small systems serving DACs in our watershed
- Creates working relationships with communities most in need
- Supports DWRs initiatives for DAC assistance in IRWM regions
- Supports OWOW Plan Update 2018 implementation
- Continues SAWPA's OWOW leadership role in the region on compelling issues





# Recommendation

- Provide direction to the SAWPA staff on the following options regarding the implementation of the grant application assistance program for small community water/wastewater systems serving disadvantaged communities in the Santa Ana River Watershed.
- 1) Take no action
- 2) Proceed with the program funded by equal shares of \$30,000/SAWPA member agency
- 3) Proceed with the program funded by each SAWPA member agency proportionate to the number of identified high need small community systems (13 identified) within or near each SAWPA member agency. This implies member agency shares could vary from approximately \$0K to \$69K



# Questions?

