

Grant Support for Small Community Water/Wastewater Systems Serving Disadvantaged Communities in the Santa Ana River Watershed



**Mark Norton, Water Resources & Planning Manager
SAWPA Commission | August 3, 2021
Item No. 6.C.**



Small Community Water/ Wastewater System Assistance Fund

Proposed SAWPA Program

- **Purpose:** provide technical assistance support for small community water/wastewater systems who lack the staffing and technical expertise to apply for government grants.
 - Assemble project information
 - Prepare both OWOW and DWR grant applications
 - Participate in OWOW stakeholder rating and ranking process
- **Outcome:** SAWPA program funding to support the preparation of Prop 1 Round 2 IRWM grant applications for up to ten small water/ wastewater systems serving disadvantaged communities



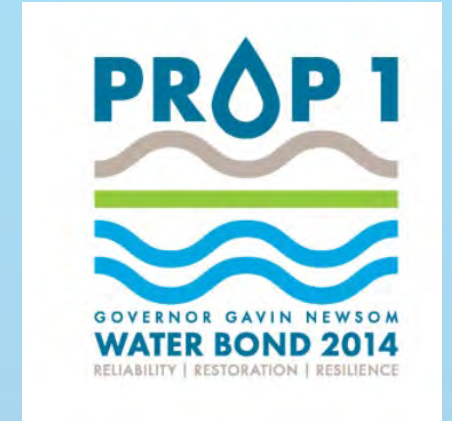
Small Community Water/Wastewater Systems: Definition

- Public agency, mutual water company or association, privately owned system, local government
- Serving less than 3000 customers or less than 3000 AF/YR delivery
- Serving primarily DAC residents annually (income levels below 80% of statewide median income)



SAWPA Member Agency General Managers Committee Meeting – Apr. 13th

- GMs recommended that SAWPA first conduct workshop with SAWPA member agencies staff.
 - To determine the need for ongoing outreach to water systems supporting disadvantaged and Tribal communities.
 - Provide updates to SAWPA member agency staff about work of the SAWPA's grant funded Disadvantaged Community Involvement program.
 - Learn more about California Rural Water Association (CRWA) support services available.
- Update about future workshop was provided to SAWPA Commission on May 18th.



Small Community Water/ Wastewater System Assistance Fund May 25th Virtual Workshop

Participants: SAWPA staff and SAWPA member agencies staff

Topics discussed:

- SAWPA's Disadvantaged Community Involvement (DCI) Grant Program and Needs Assessment Overview
- SAWPA Proposal Program Structure
- California Rural Water Agency Program Support Capacity
- SAWPA Staff Program Support
- Related SAWPA Member Agencies Disadvantaged Community Support Activities



Lessons Learned from May 25th Workshop

- Some proactive outreach programs among SAWPA member agencies do exist
- SAWPA member agencies are not currently implementing similar grant application or grant administration/construction management assistance programs
- Level of communication between SAWPA member agency staff and small systems is not clearly defined.
- Several small community water systems exist outside of SAWPA our member agency service areas
- Trailer parks, campgrounds, and others may have issues with their water delivery systems.



Small Community Water/ Wastewater System Assistance Fund – Proposal Revisions

- Due to limited preparation time to provide support, proposal narrowed and focused:
 - Suggest support for up to ten small water/wastewater community systems currently working with Cal Rural Water Association (CRWA) in watershed be supported under this program
 - Tribal support removed due to no known capacity issues in their ability to apply for implementation grants
 - Options of just funding and support of program, by some rather than all, SAWPA member agencies explored
 - Proposal concept feedback is first step, follow up would be possible contract between SAWPA and CRWA for future Commission meeting

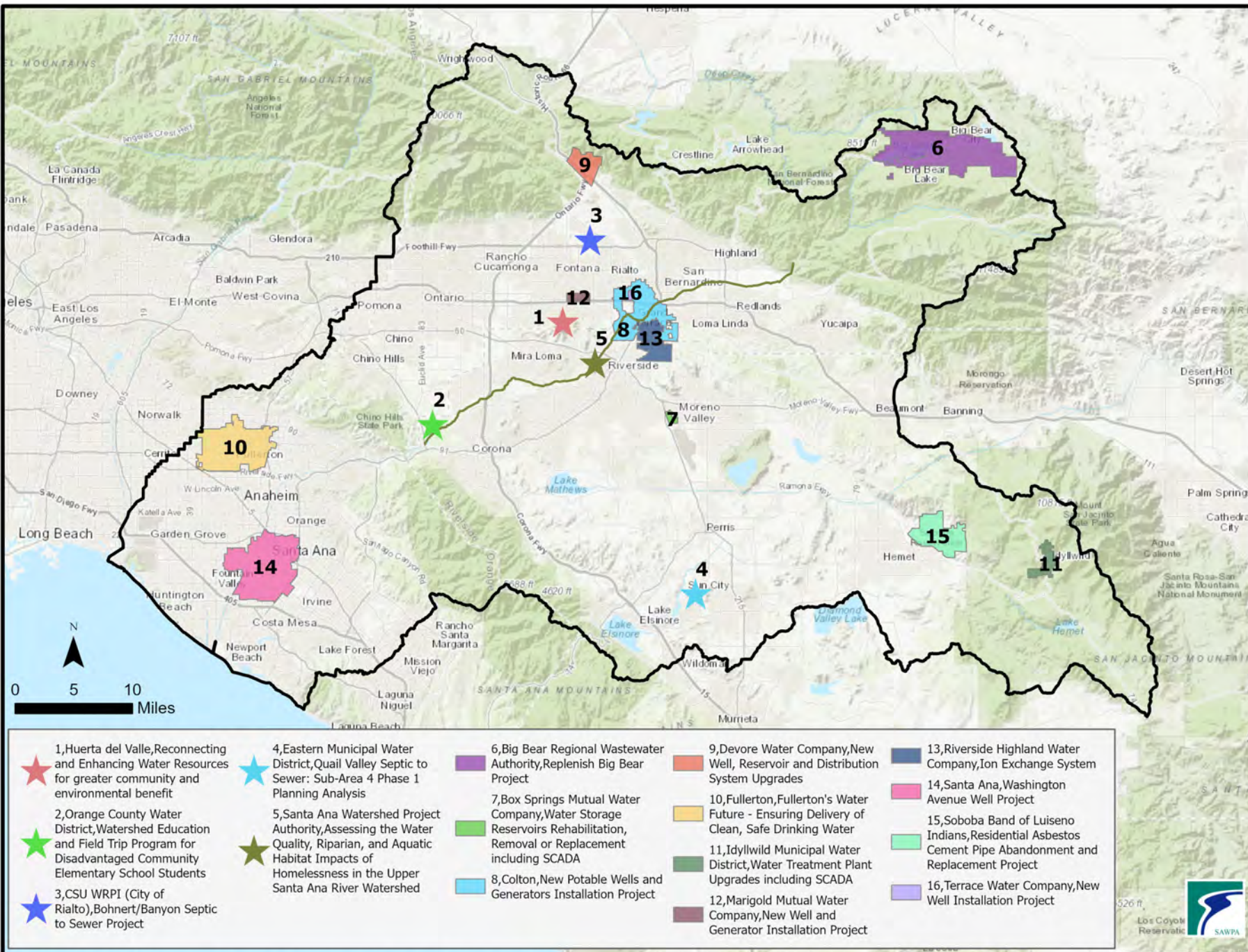


SAWPA Member Agency General Managers Committee Meeting – June 8th







- Refined business proposal presented reflecting business case for support of up to ten small community water/ wastewater systems
- GMs recommended that SAWPA present the proposal to the SAWPA Commission noting:
 - Need for services is not evenly distributed across watershed
 - Determine if all SAWPA member agencies have interest in supporting and possibly funding
 - Determine if initial CRWA grant application support proposal included grant administration support for successful projects
 - SAWPA confirmed that the CRWA offers these additional services, but the grant application proposal at this stage doesn't include project grant administration support



Past Prop 1 Disadvantaged Community Involvement program- Technical Assistance Projects

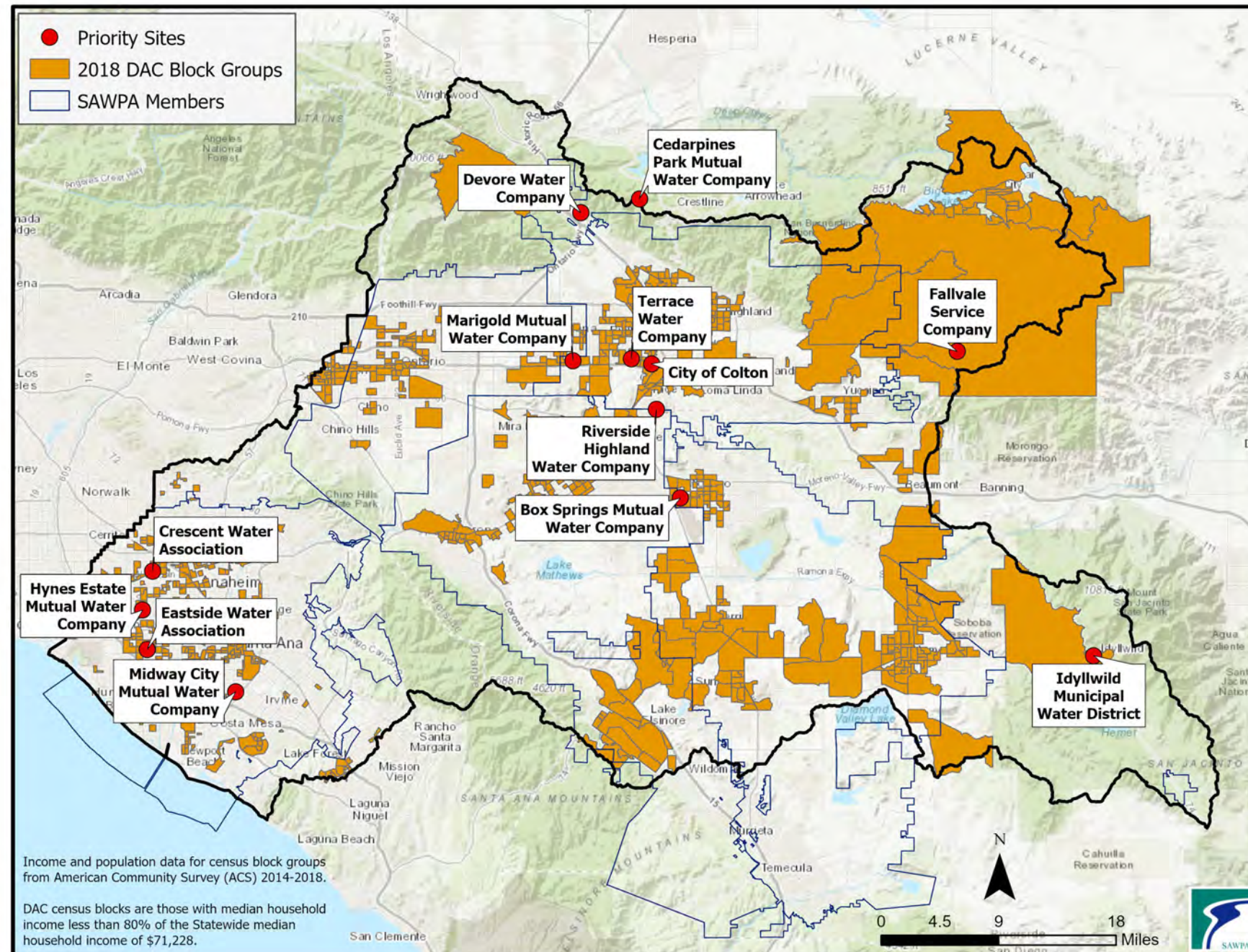


Small Community Water/Wastewater Systems currently working with CRWA (Additional systems in high need have also been identified)

					
Marygold Mutual Water Co. within SBVMWD	City of Colton within SBVMWD	Idyllwild Water District Near EMWD	Box Springs Mutual Water Co. within EMWD /WMWD	Devore Water Company near SBVMWD	Terrace Water Company Within SBVMWD



Map of High Need Small Community Water/Wastewater Systems supporting DACs in watershed




Proposal Schedule - Draft* Round 2 (R2) Schedule



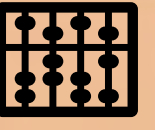
Steering Committee approves Prop 1 Policy

Nov 2018

DWR Releases Draft R2 Grant Guidelines

Aug 2021


Scoring Criteria Adopted by Steering Committee

Sep 2021




OWOW R2 Call for Projects

Oct 2021 - Jan 2022

DWR Releases Final R2 Grant Guidelines

Dec 2021



Small Community Water/Wastewater System-Grant applications due




SAWPA finalizes R2 grant agreement

Feb 2023




R2 Application Submittal to DWR

Sep 2022




Steering Committee Approves R2 Projects

Mar 2022




Staff Review & Participatory Budgeting

Jan 2022



Proposed Grant Application Support

- CRWA indicated grant application services could be provided for \$150,000 for up to 10 small communities
- CRWA has been working directly with six communities through SAWPA DCI Technical Assistance program
- These six communities within or near three SAWPA member agency service areas
- CRWA is aware of additional small communities in other SAWPA member agency service areas that may also be ready to apply for grant funding



Proposal Services, Costs and Timing

Activity	Cost Estimate	SAWPA Member Agency Cost	Timing
Grant Application	\$150,000	\$30,000	Thru Sept. 2022

Note: Funding support doesn't necessarily need to be equally shared and could be provided based on number of small communities to be funded in or near a SAWPA member agency service area.



Oversight Committee to be formed for Assistance Fund

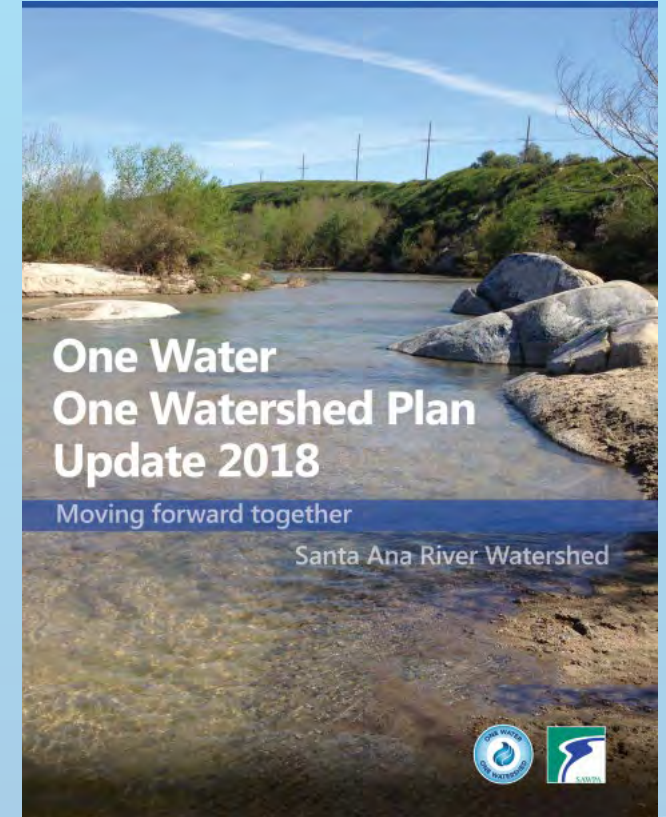
- Committee could be formed to include SAWPA staff; SAWPA's consultant, CRWA; and SAWPA member agency staff to oversee and administer the fund.
- Under the guidance of the committee, specific high-need small water systems projects could be recommended for support.
- Support would be reflective of those systems that lack the staffing, resources, or expertise to effectively apply for grant funding
- Other parties, including SAWPA member agencies, could still apply directly to OWOW Prop 1 IRWM Round 2 Implementation Grant Program Disadvantaged Community Involvement set-aside funding separate from this assistance fund



Small Community Water/ Wastewater System Assistance Fund

Benefits

- Creates funding source to assist small water systems in most need of grant application support.
- Identifies communities most in need and ready to apply for infrastructure implementation grants.
- Proactive and positive outcome of the SAWPA Prop 1 IRWM DCI program.
- Supports CA Dept of Water Resources initiatives for DAC assistance in IRWM regions
- Continues SAWPA's OWOW proactive leadership role and supports OWOW Plan Update 2018 implementation



Recommendation

- That the SAWPA Commission receive and file this information report about a regional approach to support up to ten Small Community Water/Wastewater Systems serving Disadvantaged Communities (DAC) in the watershed and provide further direction and guidance to SAWPA staff.





100-Day Plan Update

Jeff Mosher
General Manger
SAWPA Commission Meeting
August 3, 2021

Overview of First 100 Days

Within 10 Days: **Fact Finding**



10-20 Days: **Establish Team**



20-40 Days: **Prepare for Change**



40-70 Days: **Optimize Programs and Operations**



70-100 Days: **Continue the Vision**

Highlights and Outcomes

Administration and Finance (with Karen Williams)

- Completed 2-Year Budget
- Enhanced HR capabilities
- Reviewed and updated policies and procedures
- Developed an “Interim COVID-19 Return to Work Plan” (July 2020)

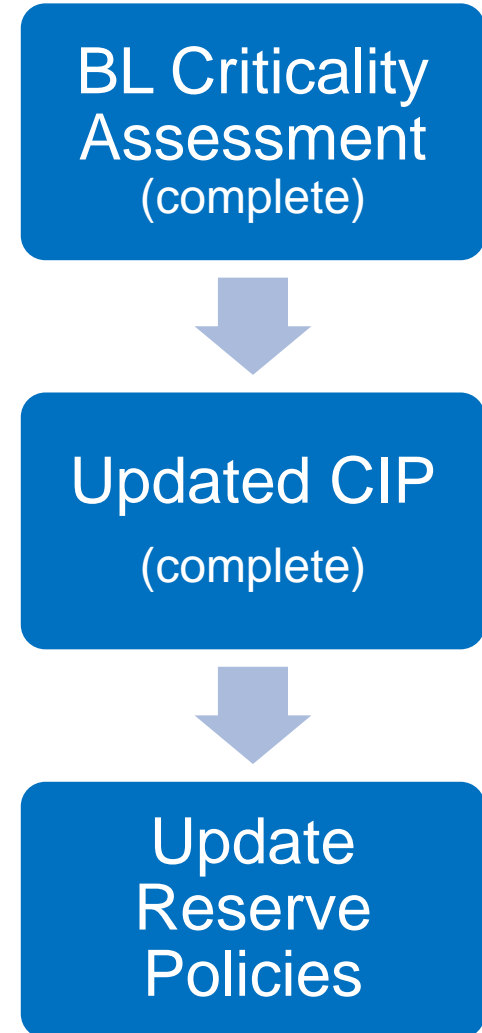
Brine Line (BL) (With David Ruhl and Carlos Quintero)

- Maintain operations and pretreatment program
- Completed BL Criticality Assessment
- Updated BL Capital Improvement Program (CIP)
- OC San partnership”
 - Joint Operations Meeting (July)
 - Joint Policy Meeting (August 19)
- BL Business Plan (draft)

Review/Update “Reserve Policies” (with Karen, David, and Carlos)

- Scope under development

Brine Line Activities



Highlights and Outcomes

Planning (with Mark Norton and water resources team)

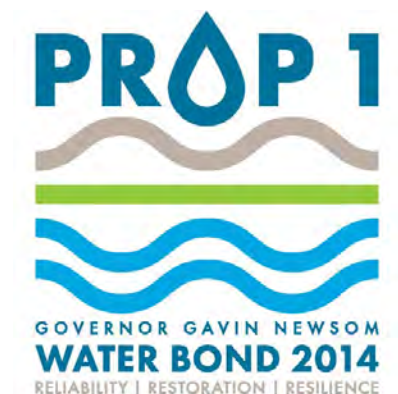
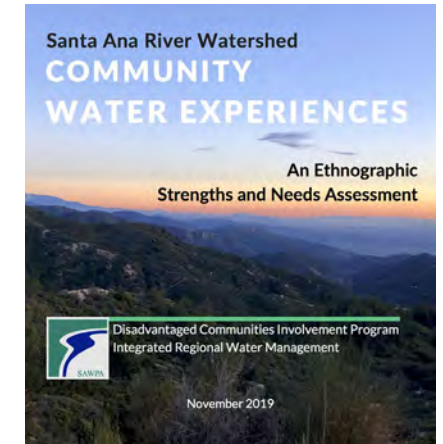
- Maintain Task Forces and Roundtables efforts
- Completed Disadvantaged Community Initiative (DCI)
- Member Agency “Profile Briefings”
- Progress on projects
 - WECAN, Arundo Mitigation Bank, Weather Modification, etc.
- New initiatives
 - Forest Health, DACs, etc.
- OWOW Prop 1 Round 2 Planning

IT (with Dean Unger)

- Covid work at home computer resources
- Cyber threat plan
- Online training

Legislative Leadership (with West Coast Advisors)

- AB 377 regional opposition letter
- IRWM funding letter for Budget Drought Measure



Overview of Next Steps

- Remaining 100-Day Plan Task:
 - SOAR – strategic assessment
- 100-Day Plan Commission Workshop
 - Review findings and recommendations
 - Review SOAR results
 - Discuss Strategic Planning approach
- SAWPA Strategic Planning
 - Commission driven
 - Revisit Vision and Mission statements (2011)
 - Revise goals and strategies (2011)
 - Assess “2016 review”

Our Vision

SAWPA’s vision is a sustainable Santa Ana River Watershed that provides clean and reliable water resources for a vibrant economy and high quality of life for all, while maintaining healthy ecosystems and open space opportunities.

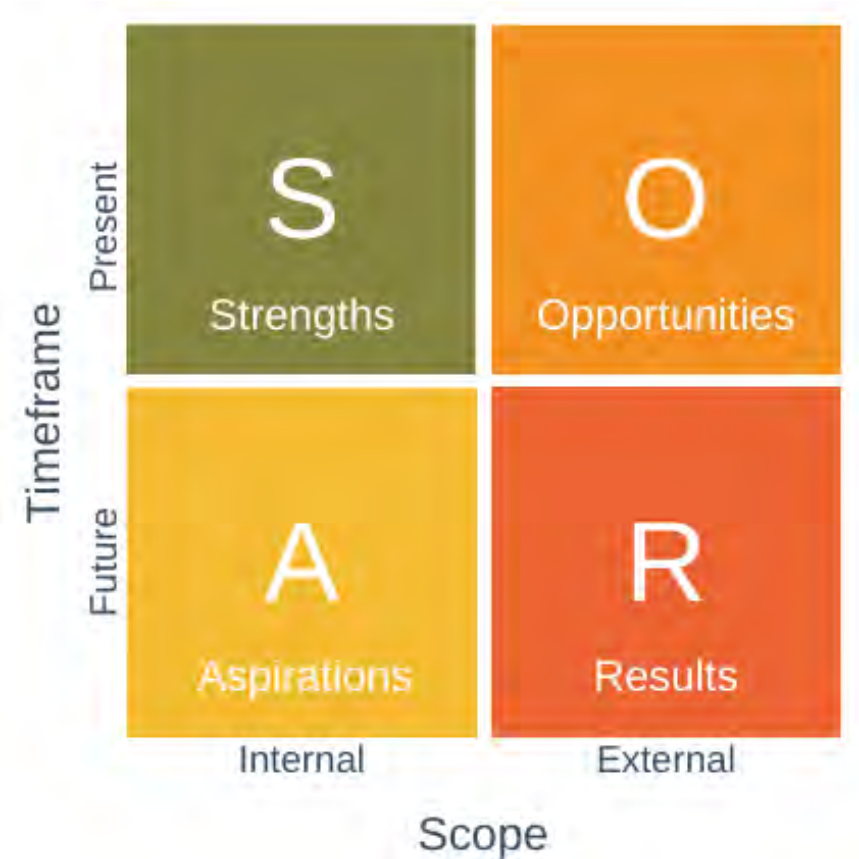
A successful SAWPA provides value to its member agencies and to the watershed as a whole by facilitating collaboration across boundaries to address common goals and tackle problems that are larger than any individual entity.

Our Mission

SAWPA strives to make the Santa Ana River Watershed sustainable through fact-based planning and informed decision-making, regional and multijurisdictional coordination, and the innovative development of policies, programs, and projects.

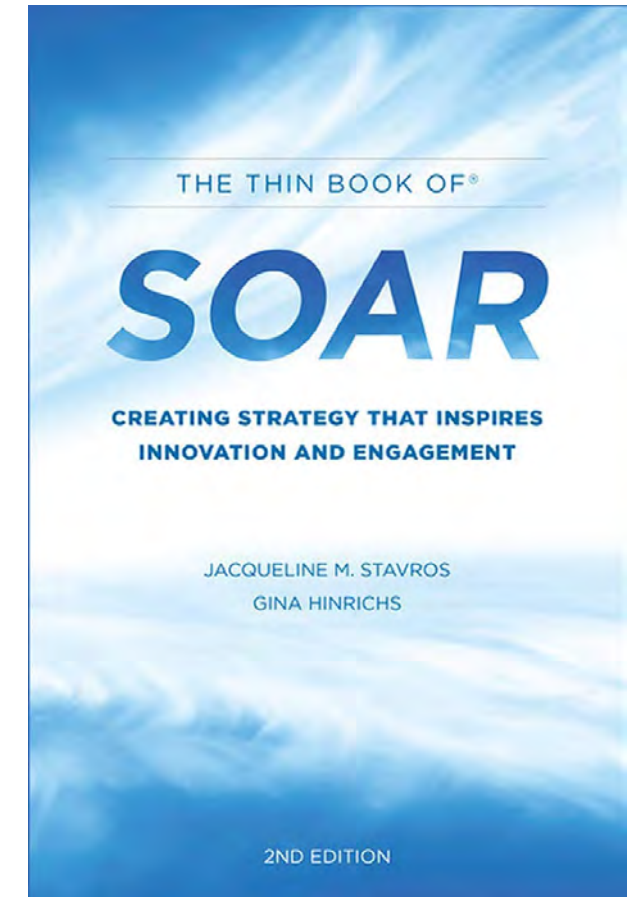
SOAR – Strategic Assessment

- Method
 - Positive approach to strategic thinking and planning
 - Create strategy through collaboration
- Overview
 - **Strengths** and **Opportunities** focus on our present situation
 - **Aspirations** and **Results** focus on our desired future situation



SOAR Background

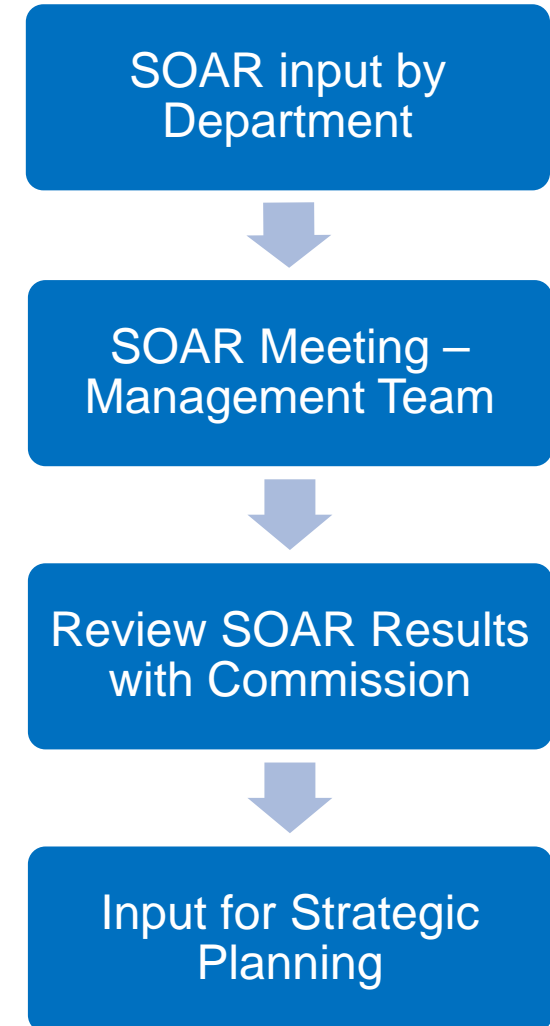
- SOAR:
 - **Strengths:** What are we great at?
 - **Opportunities:** What are the possibilities?
 - **Aspirations:** What can we become?
 - **Results:** What are meaningful outcomes?
- Anticipated Results:
 - Build trust and connections
 - Create innovations
 - Fuel productivity
 - Inspire action
 - Generate positive change



SOAR Questions and Approach

- **Strengths:**
 - What are we doing well?
 - What are our greatest assets?
- **Opportunities**
 - What are possibilities? New Ideas? Innovations?
 - What are our member agencies and stakeholders asking us to do?
 - How can we be the best partner?
- **Aspirations:**
 - What is compelling?
 - How do we drive our vision and serve our purpose?
 - How do we make a difference?
- **Results:**
 - What are measurable and meaningful outcomes?
 - What do we want to be known for?

SOAR Flow Process



100-Day Plan Commission Workshop

- Agenda
 - Review current SAWPA efforts
 - Review results of SOAR
 - Discuss 100-Day findings and outcomes
- Potential Topics
 - Focus on questions
 - Member agency priorities
 - Look for “shared success”
 - Regional opportunities
 - Strategic partnerships
 - Funding/grant opportunities
 - New/updated goals
 - Identify at least one big goal
 - Legislative priorities
 - **Strategic Planning Approach**

Strategic Planning Process



Looking Forward...

- List of Action Items and Next Steps
 - Continue engagement opportunities
 - Member agencies, stakeholders, and regulators
 - Increase conference presentations
 - Brine Line
 - Finalize BL Business Plan
 - Marketing Plan
 - Reserve Policies
 - Communications Plan
 - Website
 - Social media
 - Brochures, etc.
 - Other
 - Funding opportunities/strategy?
 - Innovation program?
 - Regional project ideas?

External Collaborations

- ACWA
 - Regulatory and legislative
- CASA
 - Wastewater issues
 - Brine
- California Water Environment Association (CWEA)
 - Operator Training
- WaterReuse California
 - Brine and legislative
- Southern California Association of POTWs (SCAP)
 - Regional wastewater
 - Brine
- California Stormwater Quality Association (CASQA)
 - Stormwater capture and use