



Santa Ana Watershed Project Authority

Sacramento Update

June 1, 2021

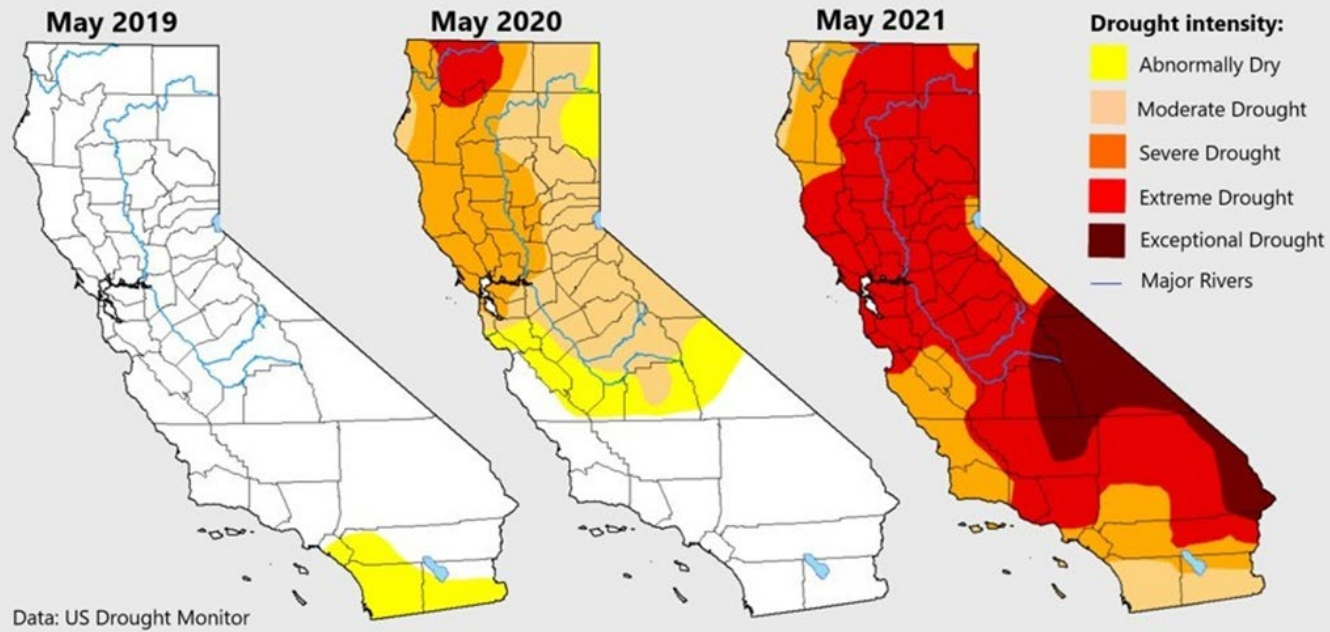
Michael Boccadoro &
Beth Olhasso



West Coast Advisors
Strategic Public Affairs

Drought Update

Drought progression in California: 2019-2021

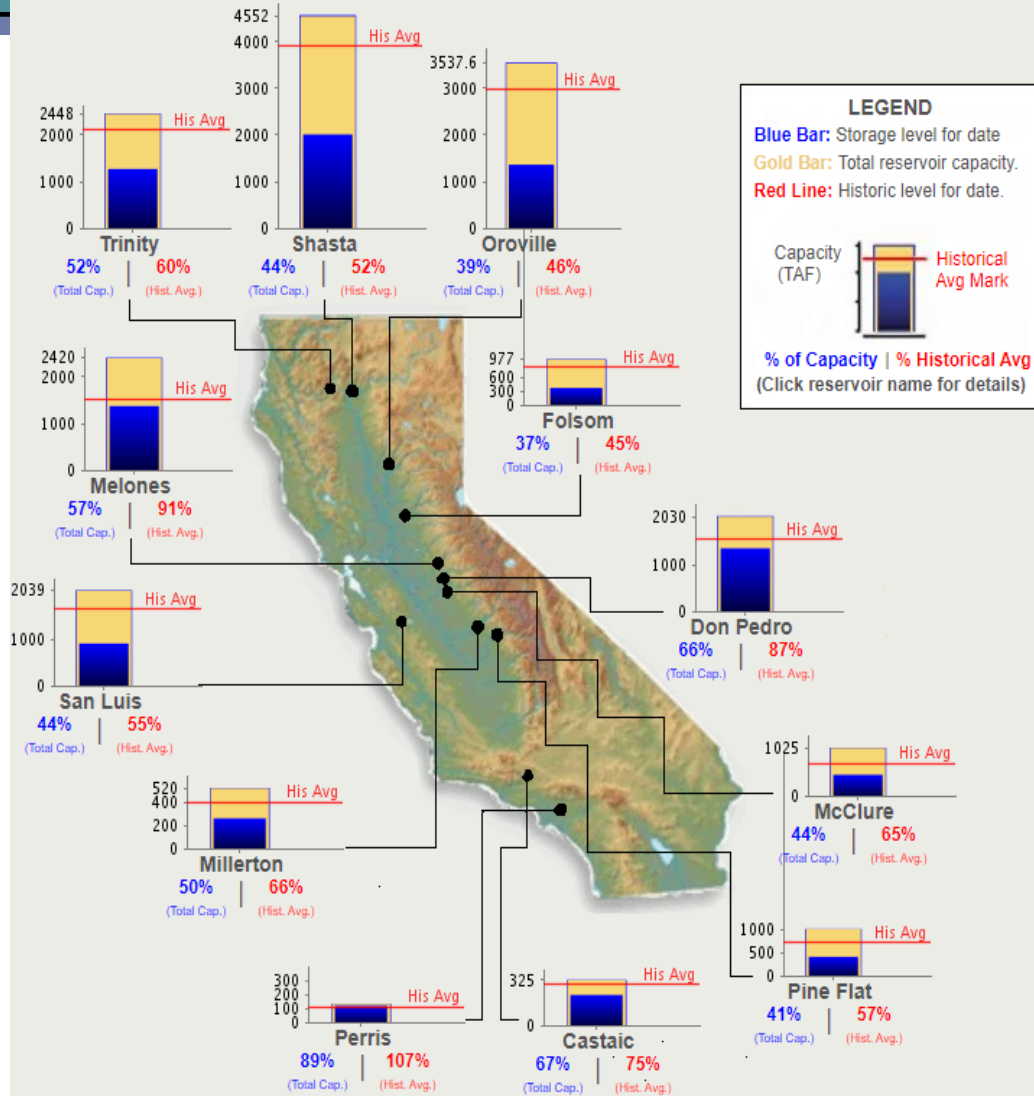


Water Supply Update


CURRENT CONDITIONS FOR MAJOR RESERVOIRS: 27-MAY-2021

Data as of Midnight: 27-May-2021

Change Date:  27-May-2021



Legislative Update- Two-Year Bills


- 
- AB 377 (R. Rivas) Water Quality
 - AB 1434 (Friedman) Indoor Residential Water Use Standard: “Stakeholder Process” at DWR started
 - SB 223 (Dodd): Discontinuation of residential water service: Governor’s Executive Order repeal?
 - SB 230 (Portantino): CECs

Legislative Update- Still Moving

- SB 222 (Dodd) Water Rate Assistance Program: Senate Floor
- AB 818 (Bloom): Non-flushable products
- SB 273 (Hertzberg): Wastewater agencies



Drought/Water Resilience Funding Update

- 
- \$76 Billion Surplus + \$26 Billion from Federal Gov.
 - Gov/Leg have about \$36B discretionary
 - Drought Package
 - Senate \$3.41 Billion
 - \$1B for water/energy arrearages
 - \$200M for recycled water
 - \$200M for stormwater
 - \$250M for urban water-use efficiency
 - Governor \$5.1 Billion
 - \$1B for water arrearages
 - \$150M over 2 years for recycled water and groundwater cleanup
 - \$1.3B for drinking water and wastewater infrastructure—mostly in DACs
 - Bonds: AB 1500 (E. Garcia) SB 45 (Portantino)

Thank You



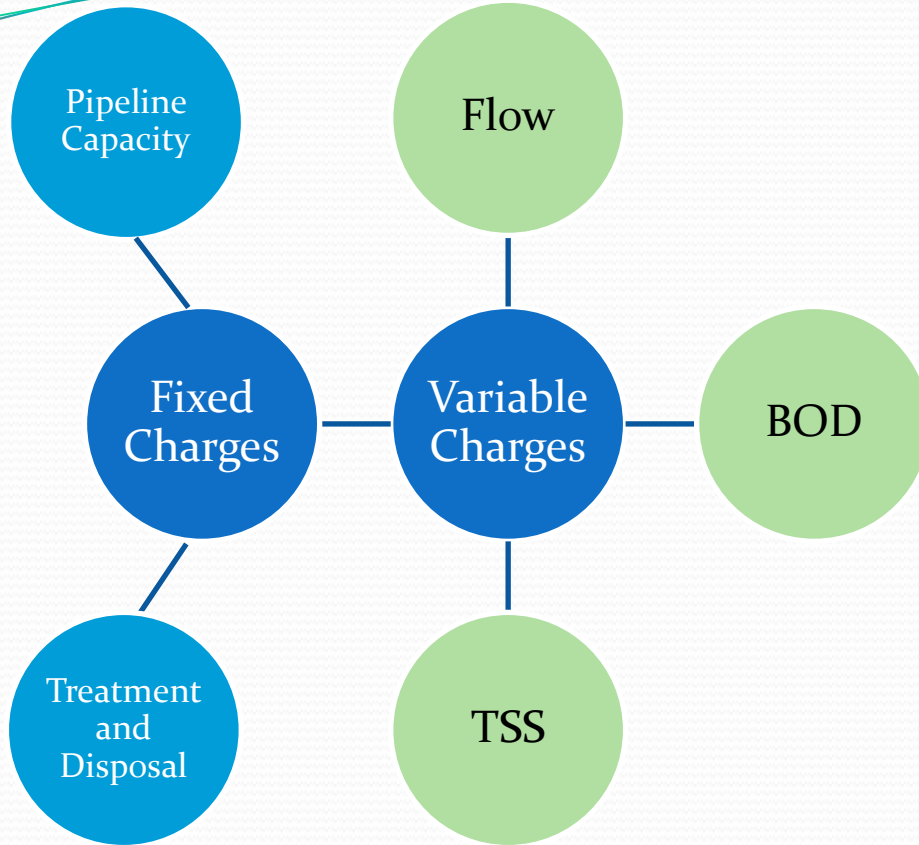
Questions?

Inland Empire Brine Line Rate Resolution 2021-4

Carlos Quintero, Operations Manager
SAWPA Commission | June 1, 2021
Item 8.B.

Recommendation

- That the SAWPA Commission adopt Resolution No. 2021-4 establishing the new Inland Empire Brine Line rates to be effective July 1, 2021 (FY21-22).



Brine Line Rate Components:

- Flow
 - Per Million Gallons
- Biochemical Oxygen Demand (BOD)
 - Per 1,000 lbs
- Total Suspended Solids (TSS)
 - Per 1,000 lbs
- Fixed Charges for Pipeline and Treatment and Disposal Capacity Owned
 - Per Million Gallons/Day

Brine Line Rates Direct Dischargers (FY21-22)

Options	Effective date	Flow (MG)	BOD - 1,000 lbs	TSS - 1,000 lbs	Fixed Pipe	Fixed T&D
Current rates FY20-21	-	1,018	329	460	6,654	13,505
Proposed Rates FY21-22	7/1/2021	1,018	329	460	6,654	13,505

Indirect Dischargers

- Currently using a 2-tier system:
 - Brine (< 100 mg/L of both BOD or TSS)
 - Non-Brine (≥ 100 mg/L of either BOD or TSS)
 - Charges based on a per gallon base for brine tier and a per gallon base plus pounds of BOD and pounds of TSS for non-brine tier.

Indirect Discharger Rates

Option	Brine ^(a) Tier (< 100 mg/L) / gallon	Non-Brine ^(b) Tier* (≥ 100 mg/L) / gallon	BOD/lb	TSS/lb
Current (FY19-20)	\$0.016	\$0.016	\$0.78	\$0.745
Proposed (FY21-22)	\$0.016	\$0.016	\$0.78	\$0.745

**Non-brine tier charges the flow component plus any pounds of BOD and TSS.*

(a) Brine Tier if both BOD and TSS concentrations are less than 100 mg/L

(b) Non-Brine Tier if any of the BOD or TSS concentrations are 100 mg/L or greater.

Capacity Pool Lease Rates

Option	Flow (per gallon)	Additional BOD (per lb)	Additional TSS (per lb)
Current (FY20-21) [250 mg/L BOD/TSS]	\$0.00263	\$0.4080	\$0.2501
Proposed (FY21-22)	\$0.00263	\$0.4080	\$0.2501
Treatment and Disposal Only	\$0.00117	\$0.4080	\$0.2501

Treatment & Disposal Surcharge Rates

Option	Flow (per gallon)	BOD (per lb)	TSS (per lb)
Current (FY20-21)	\$0.0021	\$0.4080	\$0.2501
Proposed (FY21-22)	\$0.0021	\$0.4080	\$0.2501

These rates apply to dischargers that exceed their contractually owned capacity in any given month.

Proposed Permit Fees

Type of Permit	FY20-21 Fee	Proposed FY21-22 Fee
Direct Discharger	\$600	\$600
Indirect Discharger	\$300	\$300
Connection Authorization	\$1,100	\$1,100
Liquid Waste Hauler	\$250	\$250

Brine Line Approved Budgeted Expenses

Category	FY20-21	FY21-22*	Change (%)	Change (\$)
TOTAL	11,617,205	11,588,491	-0.25%	-28,714

*Draft Budget

Recommendation

- That the SAWPA Commission adopt Resolution No. 2021-4 establishing the new Inland Empire Brine Line rates to be effective July 1, 2021 (FY21-22).



Questions??

SAWPA TASK FORCES REGULATORY SUPPORT

**Presented by Mark Norton P.E.,
Water Resources & Planning Manager**

**SAWPA Commission | June 1, 2021
Item No. 8.C.**

Basin Monitoring Program Task Force

Eastern Municipal Water District	Chino Basin Watermaster
Inland Empire Utilities Agency	Yucaipa Valley Water District
Orange County Water District	City of Beaumont
City of Riverside	City of Corona
Lee Lake Water District	City of Redlands
Elsinore Valley Municipal Water District	City of Rialto
Irvine Ranch Water District	Jurupa Community Services District
Colton/San Bernardino Regional Tertiary Treatment and Wastewater Reclamation	Western Riverside Co Regional Wastewater Authority/WMWD
*San Bernardino Valley Municipal Water District	*City of Banning
* San Gorgonio Pass Water Agency	* Beaumont Cherry Valley Water District

- Four new agencies added in 2015
- Santa Ana Regional Board also a non-funding task force agency

Recent and Future Deliverables – BMP TF

- Last triennial ambient groundwater quality update by WSC was adopted by Regional Board on Dec. 2020
- Basin Plan Amendment reflecting Santa Ana River Wasteload Allocation is complete and awaiting Regional Board notification period and Board approval in July/Aug 2021
- Existing WWTP permits were extended to meet new SAR Wasteload Allocation
- RFP prepared and released for consultant services to review Annual Water Quality Report and Ambient Water Quality Update approach to comply with State Board 2018 Recycled Water Policy Updates

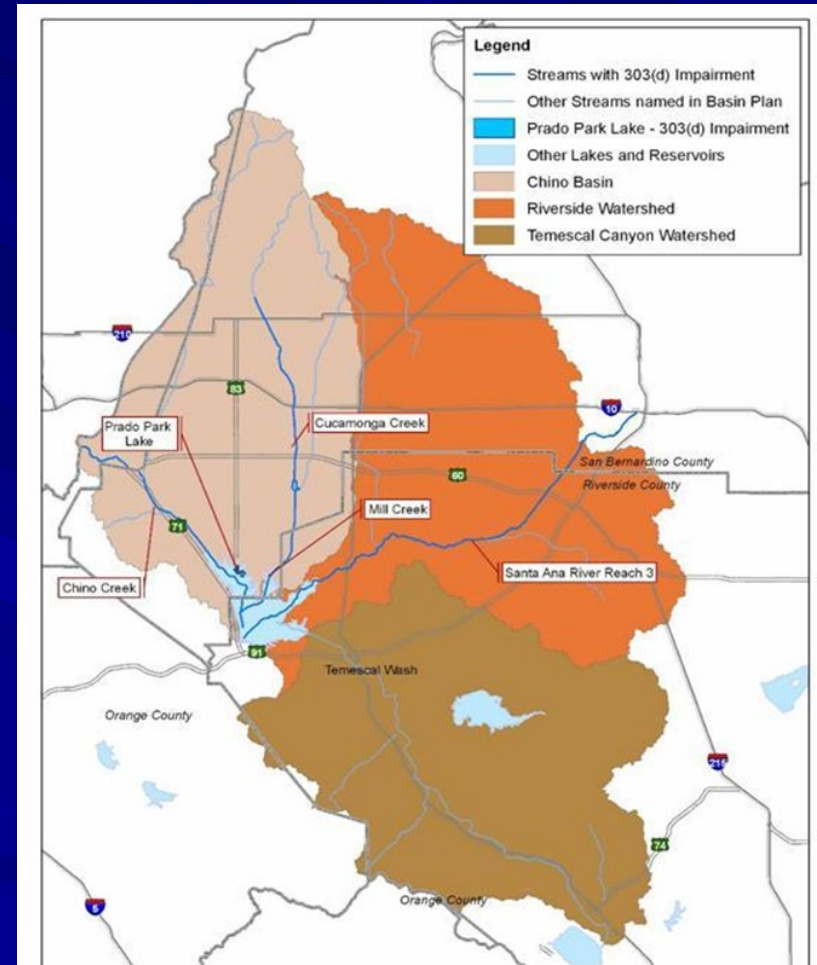


Middle Santa Ana River Pathogen TMDL Task Force

SAWPA authorized TF agreement - 2007

- February 2005, Regional Board established Bacterial Indicator Total Maximum Daily Loads (TMDLs) for Middle Santa Ana River Waterbodies
 - Santa Ana River, Reach 3
 - Chino Creek, Reaches 1 and 2
 - Cucamonga Creek, Reach 1
 - Mill Creek (Prado Area)
 - Prado Park Lake

- Key Compliance Dates
 - December 31, 2015 - compliance with Dry Season TMDLs, wasteload allocations and load allocations
 - December 31, 2025 - compliance with Wet Season TMDLs, wasteload allocations and load allocations



Recent and Future Deliverables – MSAR TMDL TF

- Prepared and submitted Draft 2020 Annual SAR Regional Bacteria Monitoring Report in April 2021.
- Began 2021 warm season monitoring in May 2021.
- Continue discussion with Regional Board of the next steps to be taken regarding the process to update the MSAR TMDLs.
- Prepare 2021-22 stakeholder invoices to be sent out in July 2021
- Continue serving as the contracting party for both counties to implement specific studies and projects as defined under each County's Comprehensive Bacteria Reduction Plan implementation activities.



Emerging Constituents (EC) Program Task Force

SAWPA authorized TF agreement - 2012

Description

- Complied with Regional Board Resolution under Cooperative Agreement for Imported Water Recharge
- Completed 2010-2013, 2019 Voluntary Annual Sampling reports for emerging constituents
- Implements safe tap water public outreach program based on SAWPA commission direction to respond to Environmental Working Group misinformation

Benefits

- Assisted state and federal agencies in determining most effective measuring and detection practices
- Avoided need to conduct long term EC monitoring costs on 100s of other ECs
- Watershed evaluation of ECs helped frame discussion on ECs at State level to our benefit
- Corrects misinformed media exposure through outreach
- Provided perspective of PFAs compounds in waterways of watershed

2013 Sampling Report for Emerging Constituents in the Santa Ana Region



Santa Ana Watershed Project Authority



April, 2014

Emerging Constituents Program Task Force – 21 Water & Wastewater Agencies and Regional Board Signed Agreement to Sample ECs

Who participates:

- Water Wholesalers
- Water Retailers
- Wastewater Treatment Operators
- Regional Board Staff
- DDW Staff
- USGS Staff
- Analytical Lab Staff
- NWRI Staff
- Environmental NGOs



Recent and Future Deliverables – EC Program TF

- EC Program Task Force August 2019 Sampling Report was completed and presented to Regional Board in Feb. 2021
- Updates on changing regulations for ECs and PFAS are shared with Task Force at quarterly meetings
- Will meet at least quarterly with regulatory advisor updates
- Need for 2021-2022 ECs and PFAS annual sampling report still being considered



Task Force – Regulatory Support

- Since August 2019 Tess Dunham of Kahn Soares & Conway (KSC) has served in a specialized role as the regulatory advisor and strategist for the following SAWPA task forces:
 - Basin Monitoring Program Task Force
 - Middle Santa Ana River Pathogen TMDL Task Force
 - Emerging Constituents Program Task Force
- Based on feedback from all three task forces, continuing these special support services by Tess Dunham of KSC for each of them has been recommended and budgeted.



Recommendation

That the Commission authorize the General Manager to execute the following:

- Task Order KSC374-02 with Kahn Soares & Conway in the amount not to exceed \$116,000, \$50,000 for FY21-22 and \$66,000 for FY 22-23, to provide strategic and regulatory support for the Basin Monitoring Program Task Force; and,
- Task Order KSC384-02 with Kahn Soares & Conway in the amount not to exceed \$149,750, \$74,375 for FY 21-22 and \$75,375 for FY 22-23, to provide strategic and regulatory support for the Middle Santa Ana River Pathogen TMDL Task Force.
- Task Order KSC392-02 with Kahn Soares & Conway in the amount not to exceed \$46,500, \$23,000 for FY 21-22 and \$23,500 for FY22-23, to provide strategic and regulatory support for the Emerging Constituents Program Task Force.

Disadvantaged Communities Involvement Program

Summary Report

**Rick Whetsel, Senior Watershed Manager
SAWPA Commission | June 1, 2021
Item No. 8.D**



Disadvantaged Communities Involvement Program (DCI) Program

DWR established the Disadvantaged Community Involvement Grant Program to support the following objectives:

- 1) Work collaboratively to involve DACs, community-based organizations, and stakeholders in IRWM Planning efforts
- 2) Increase the understanding, and identify the water management needs of disadvantaged communities
- 3) Develop strategies and long-term solutions that appropriately address the identified DAC water management needs
- 4) Support technical assistance for planning of future construction projects including feasibility, design, CEQA, etc. - Not construction at this stage.



Program Partners

Leveraging Resources for Biggest Impact

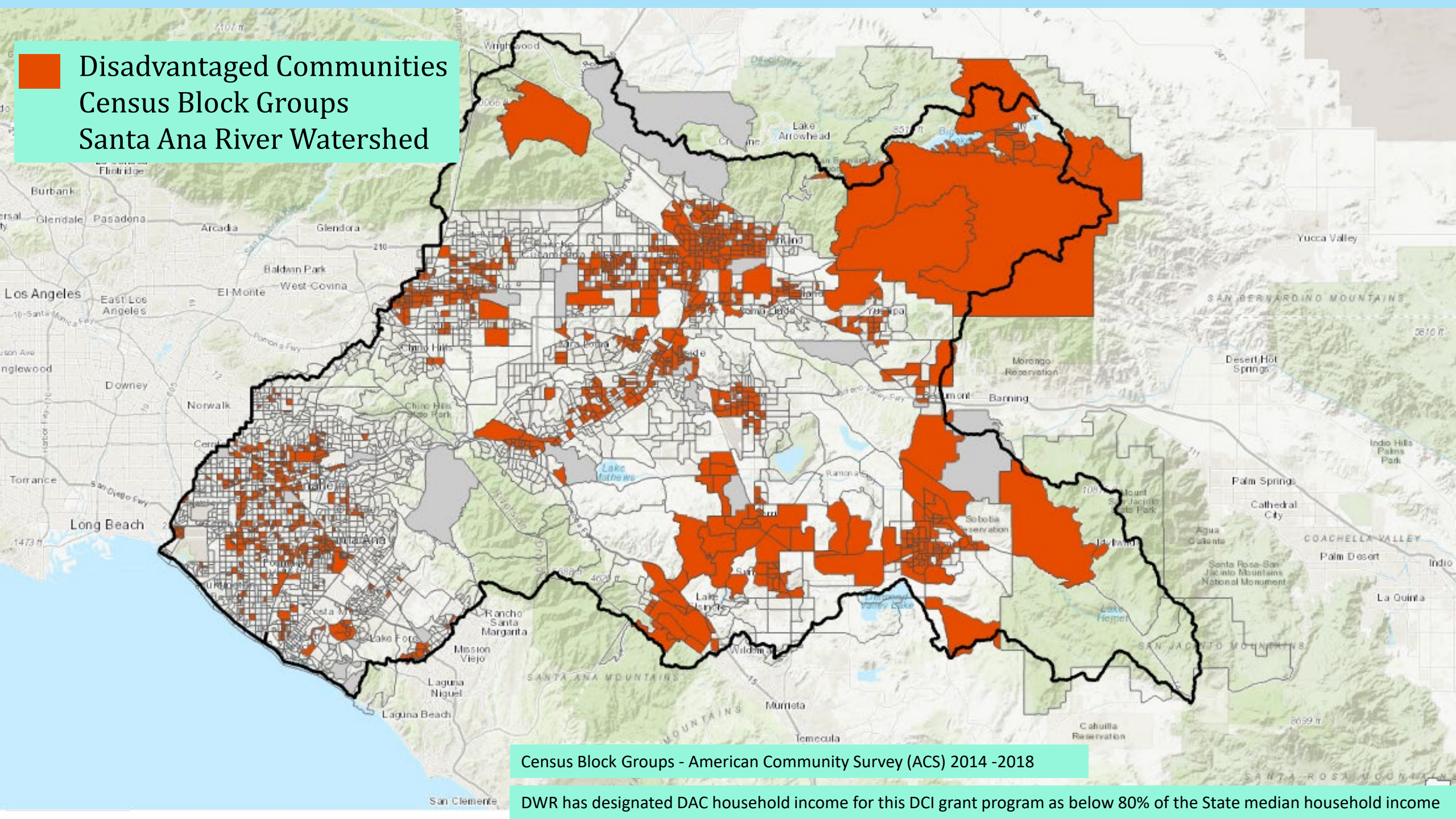


CivicSpark Water Fellows Program

- SAWPA hosted two CivicSpark Water Action Fellows each year of the program to support program implementation.
- CivicSpark was launched in 2014 as Governor Brown's Initiative AmeriCorps program (managed by Local Government Commission).
- Water Action Fellowship is a Governor's Initiative AmeriCorps program, building on success of CivicSpark.
- Water Action Fellows serve on research, planning, and/or implementation projects to fill immediate gaps and build long-term capacity within their beneficiary agencies to address critical water resource challenges.



**Disadvantaged Communities
Census Block Groups
Santa Ana River Watershed**

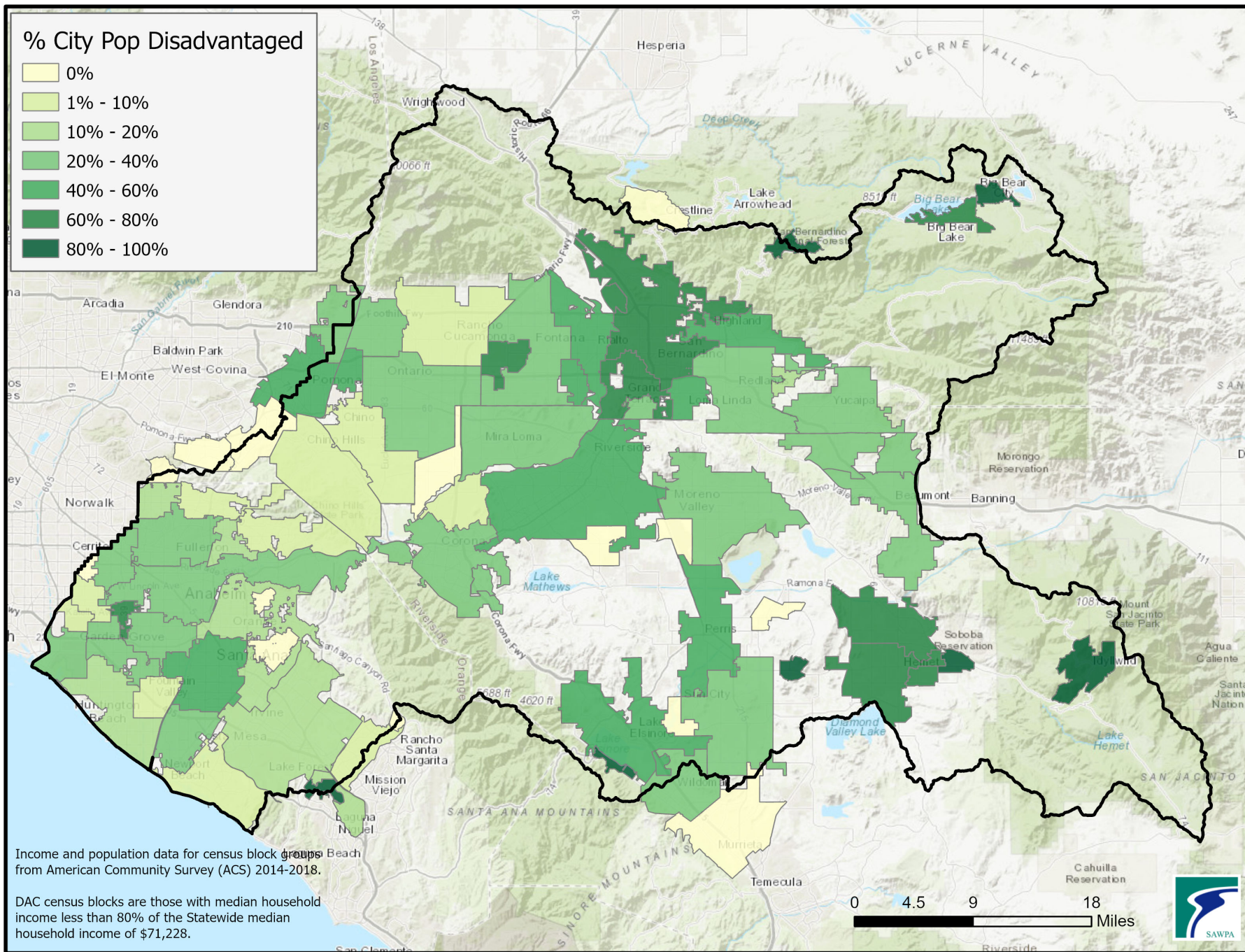


Census Block Groups - American Community Survey (ACS) 2014 -2018

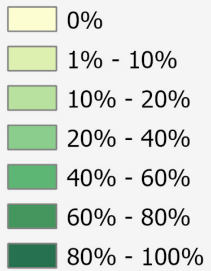
DWR has designated DAC household income for this DCI grant program as below 80% of the State median household income

Santa Ana Watershed Cities

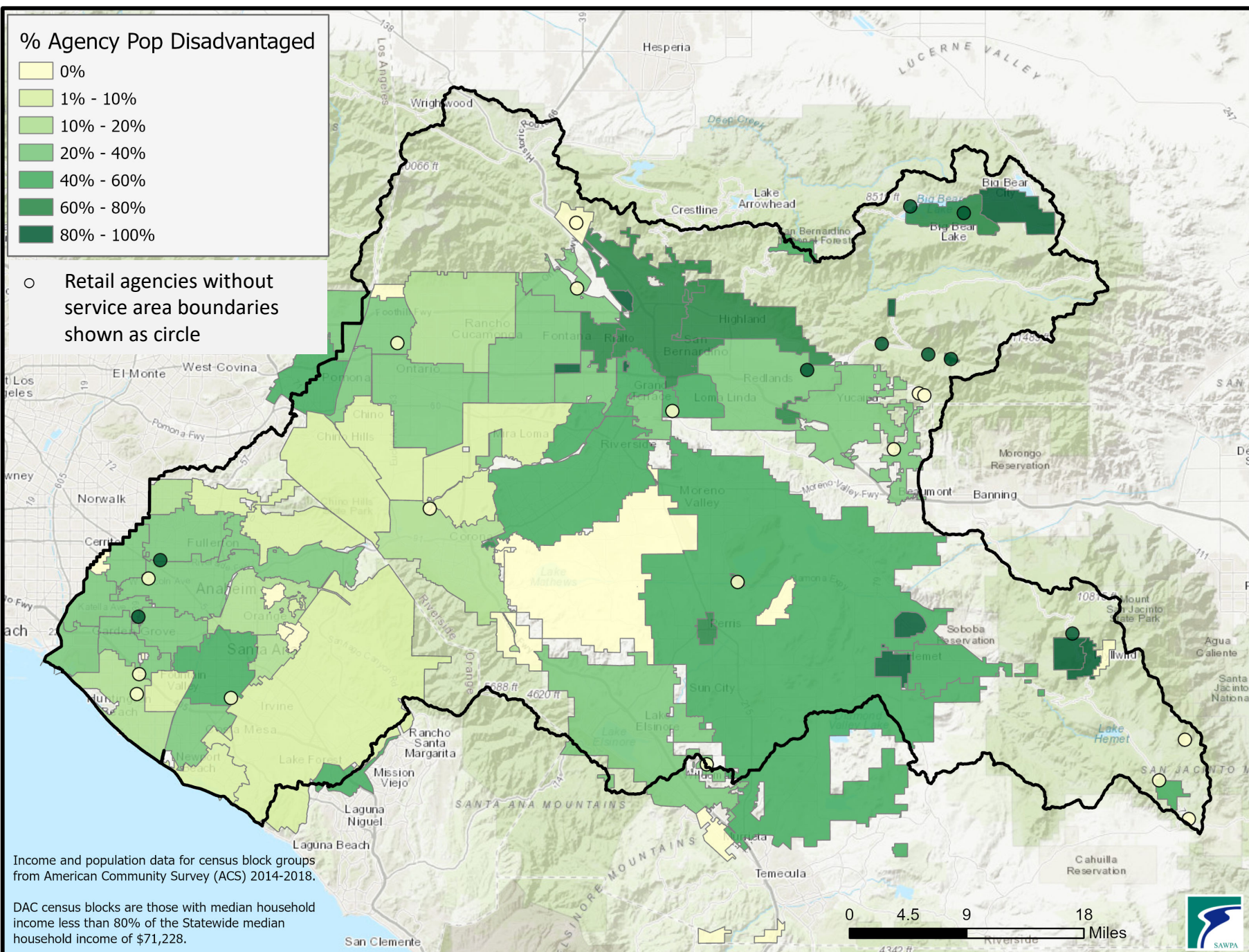
Percent Disadvantaged Community Population



% Agency Pop Disadvantaged



○ Retail agencies without service area boundaries shown as circle



Income and population data for census block groups from American Community Survey (ACS) 2014-2018.

DAC census blocks are those with median household income less than 80% of the Statewide median household income of \$71,228.

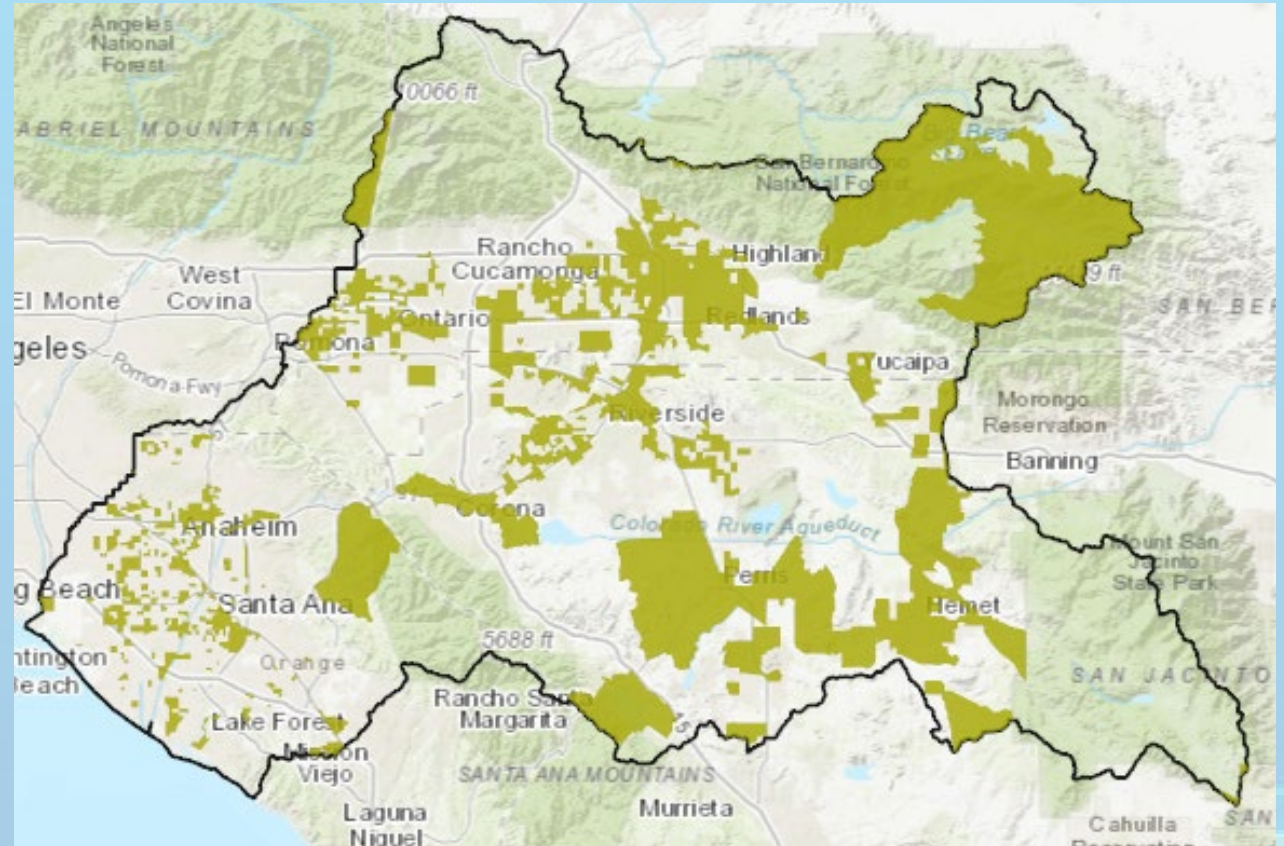
Santa Ana Watershed Water Retailers

Percent Disadvantaged Community Population



DCI Program Elements

1. Strengths and Needs Assessment
2. Education and Engagement
3. Project Development
4. Administration



Program Budget

Program Element	Budget Allocation
1. Strength & Needs Assessment	\$898,644
2. Engagement & Education	\$1,853,068
3. Project Development	\$3,233,288
4. Grant Management/ Administration	\$315,000
Total:	\$6,300,000



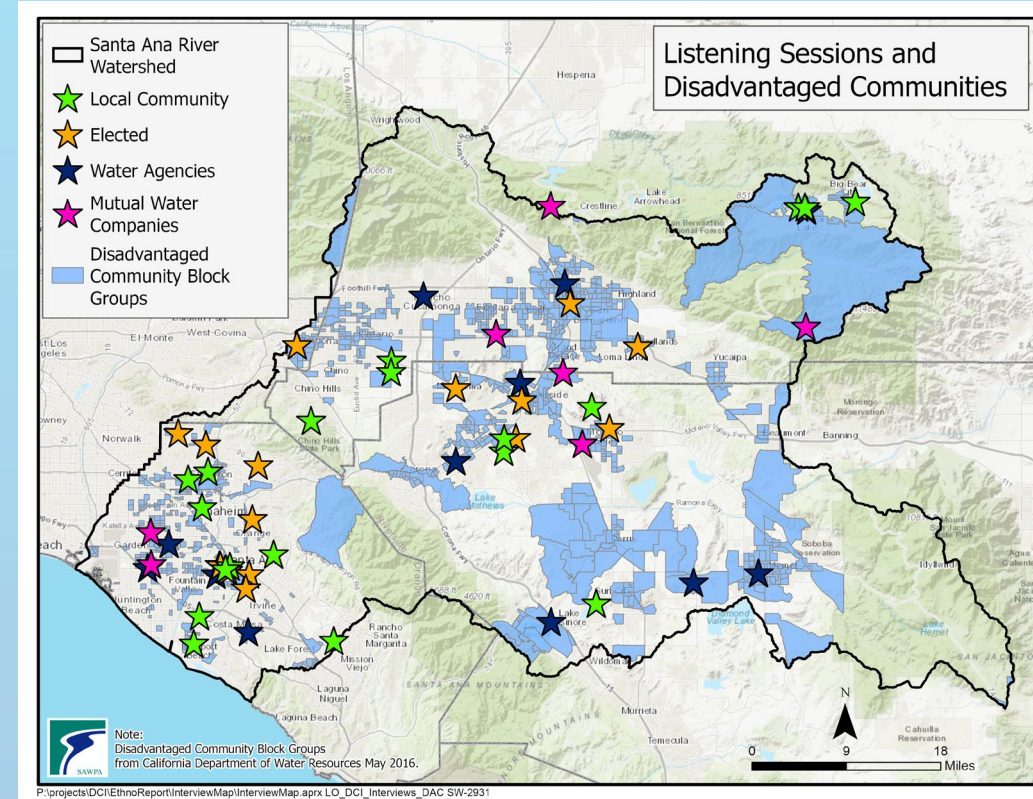
Program Element 1 - Strengths and Needs Assessment

Objectives:

Acknowledge and document strengths of overburdened and underrepresented communities.

- Interview and/or survey local elected leaders.
- Engage with mutual water companies.
- Conduct community workshops throughout the watershed

Create new networks of familiarity between local elected or community leaders and water management leaders



Ethnographic Approach

- Ethnography is a qualitative method that produces holistic analyses of social experiences.
- Conducted over a two-year period
- Four Key activities:
 - engagement,
 - listening,
 - analysis
 - community conversation report-backs.
- Engaged five social groups
 - Native communities,
 - other diverse local communities,
 - elected officials,
 - water agencies,
 - mutual water companies.

Core Tenants of Community Engagement



Listen

Respectful listening fosters community "inreach" and knowledge sharing as opposed to uni-directional "outreach"



Value Local Expertise

People are experts on their own communities and experience(s)



Understand Belonging

Each person is a member of multiple communities. These communities are defined shared experiences, values, and perspectives, not simply by geographic boundaries

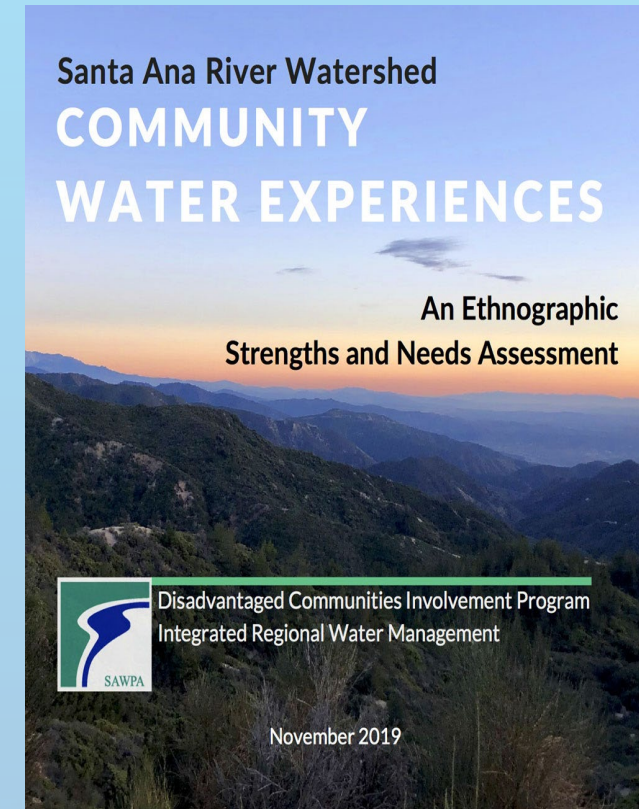


SAWPA

Ethnographic Strengths and Needs Assessment

Objective: Strengths and needs assessment designed by SAWPA and its partner agencies to take the next step in integrated and inclusive watershed planning.

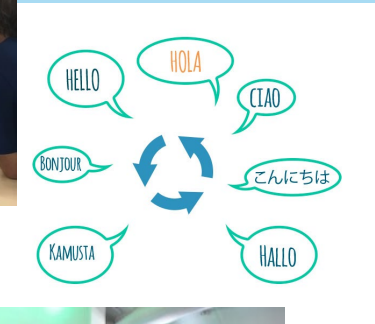
- SAWPA partnered with the University of California, Irvine's Department of Anthropology and California State University, San Bernardino Water Resources and Policy Initiatives.
- Initial phase 1 Report available on SAWPA DCI webpage



Program Element 2 - Education and Engagement

Objectives of this program element included activities intended to accomplish multiple long-term outcomes for the region:

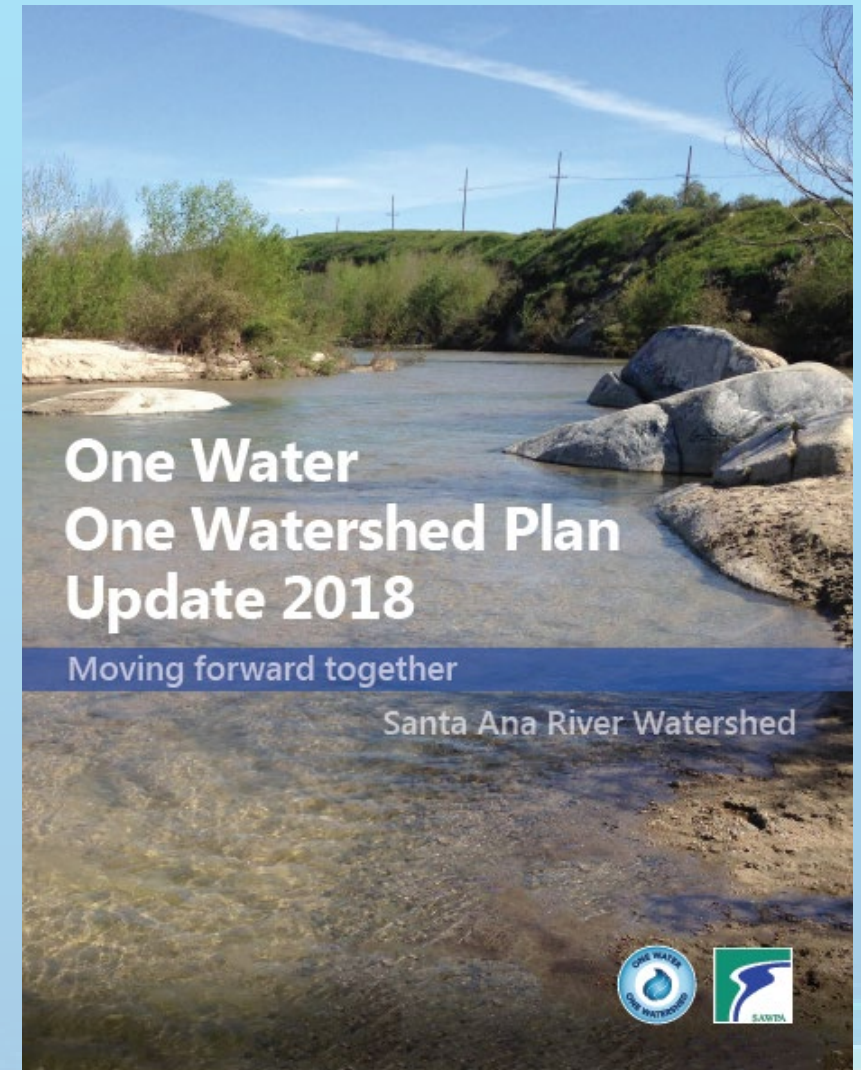
- Provide community members better understanding of water management.
- Strengthen participation in the OWOW process.
- Engage and educate elected representatives.



OWOW Plan Update 2018

Objective: incorporate findings from the Disadvantaged Community Involvement program into the 2018 OWOW Plan update.

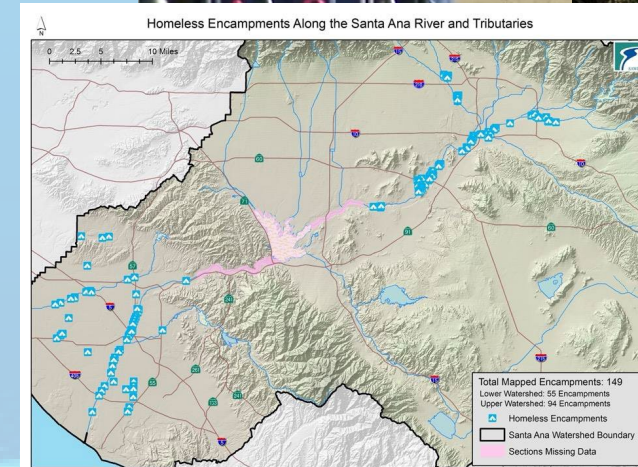
- Updated Subchapters of the OWOW Plan
 - 5.3 Tribal Communities
 - 5.5 Disadvantaged Communities
- Plan Adopted: February 2019
- Available on the SAWPA DCI Program webpage



Homelessness & Water Convening

Objective: reveal synergies and develop new partnerships between those seeking to manage homelessness and those engaged with water management

- SAWPA Hosted two events (2017)
- Identified linkages between water & homelessness
 - Homeless considered underrepresented community
 - Water quality degradation (trash, bacteria)
 - Hydromodification (damming, debris)
 - Riparian / Aquatic habitat (physical disturbance, fire)
 - Flood risk (unsheltered people)
 - Access to drinking water
 - Access to sanitation (sanitary sewer, hygiene)
 - Repurposing of multi-use recreation facilities



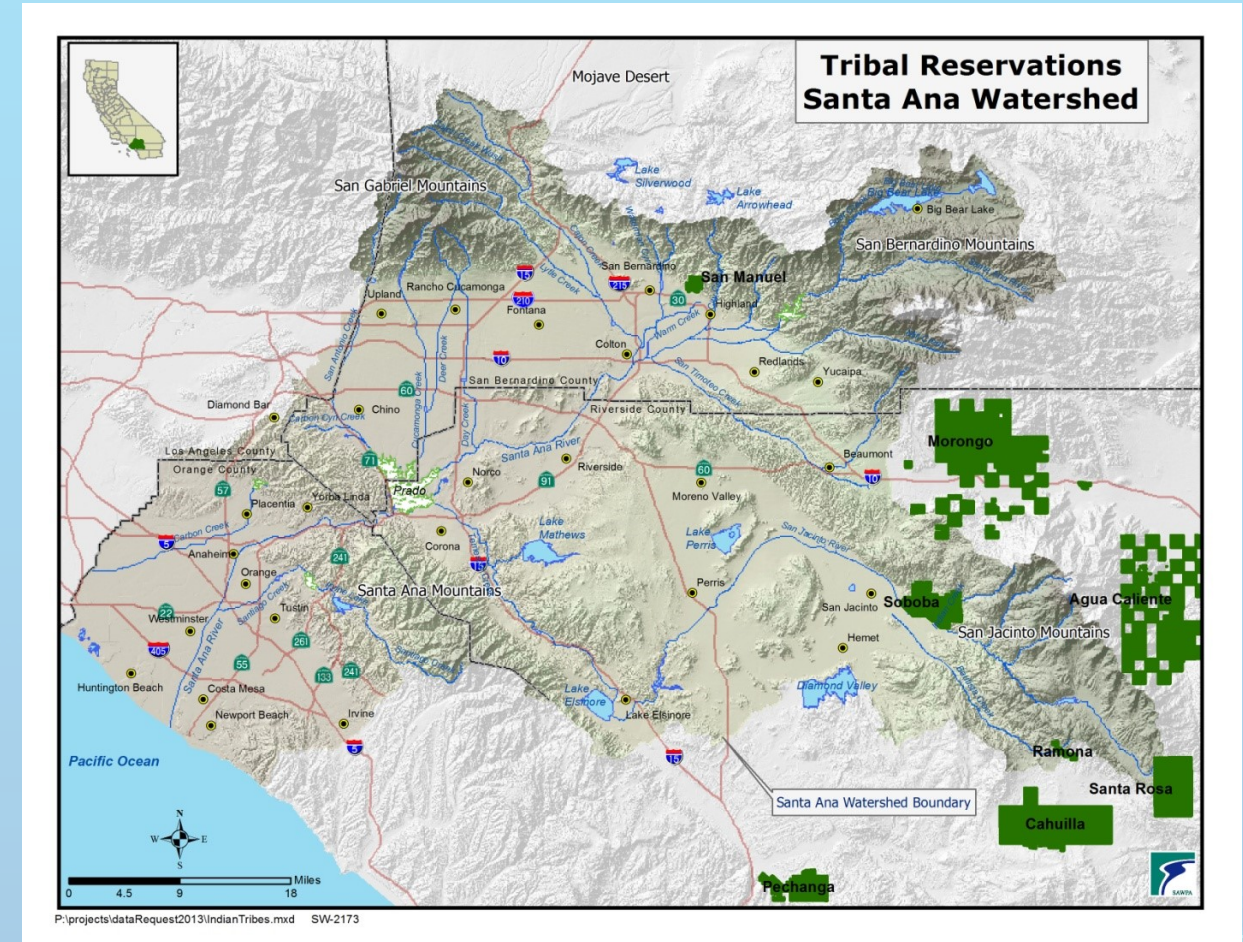
Note: Encampment data provided by the Orange County Department of Public Works, the Riverside County Sheriff's Department, and the San Bernardino County Sheriff's Department. Data for the Santa Ana River tributaries is incomplete or absent.



Tribal Consultation

Objective: Confer with the sovereign tribal communities within the Santa Ana Watershed and the adjacent areas not served by a Regional Water Management Group.

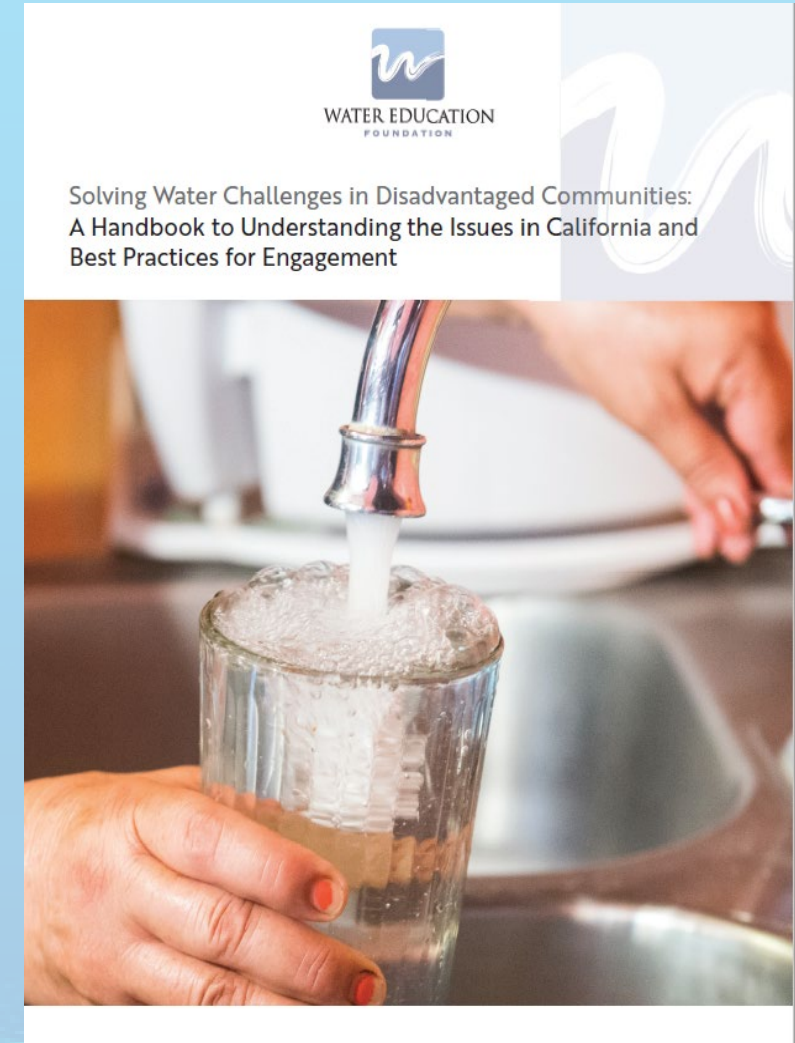
- Conducted outreach and held workshops
 - Invitations to all Tribal groups
 - Included non-federally recognized Native American Tribes.
- Activity Lead: SAWPA staff/ CRWA



Engagement Best Practices Publication

Objective: Produced publication to report on engagement of disadvantaged communities and water management

- Highlighted case studies from around the state, including the SAWPA region
- Activity Lead: Water Education Foundation
- Final Report: July 2020
 - Printed publication distributed Statewide
 - *SAWPA has a limited number of copies available!
 - Digital version available on the SAWPA DCI webpage



Water Agency Community Engagement Training

Objective: Conducted six virtual training events directed at agency staff of small Community Water Systems and Mutual Water Companies.

- Activity Lead: California Rural Water Agency
- Courses offered included:
 - Leak Detection & Water Loss Accountability
 - Rates & Rates Structure
 - Water Conservation/Water Shortage Management Plans
 - AB 54 Board Member Training
 - Emergency Preparedness/Response
 - Grant Funding & Infrastructure Planning
 - Well Diagnostics, Rehab, & Maintenance



Santa Ana Watershed Ambassador Program for Local Policymakers

Objective: Provided trainings for local elected leaders and their staff in the watershed.

- Relayed the findings of the Strengths & Needs Assessment
- Provide basic information on water management topics, and best practices
- **Workshop 1:** Getting to Know Your Watershed (September 2019)
- **Workshop 2:** Collaborative Planning in the Face of Uncertainty (January 2020)
- **Workshop 3:** Communicating the Value of Water to Your Constituents (July 2020)
- Spring 2021 - conducted condensed versions of the 2019-2020 Watershed Ambassador Certification Program.
 - Materials used to develop on-line mini-series to be hosted on SAWPA Watershed Ambassador website to continue the program
- Materials available on SAWPA DCI Program website



Santa Ana River Watershed Ambassador Program for Local Policymakers - Virtual Mini Series



How To Get Certified

- 1 WATCH THE RECORDINGS
- 2 COMPLETE THE ACTIVITY
- 3 COMPLETE THE EVALUATION
- 4 EMAIL AMBASSADOR@SAWPA.ORG
- 5 RECEIVE YOUR CERTIFICATE!

Workshop 1: Getting to Know Your Watershed

Workshop 2: Collaborating in the Face of Uncertainty

Workshop 3: Communicating the Value of Water



SAWPA

Statewide Disadvantaged Communities and Tribal Involvement Lessons Learned Virtual Summit

Focus: Disadvantaged Communities and Tribes
Lessons Learned through Prop 1 IRWM Program

- Highlighted SAWPA's DACI Program
- Findings from IRWM regions around the State
- Key Speakers:
 - Wade Crowfoot, California Natural Resources Agency
 - Laurel Firestone, State Water Resources Control Board
 - Yana Garcia, California Environmental Protection Agency
 - Carmel Brown and Anecita Agustinez, Department of Water Resources
- Conducted as three half day events
- Over 450 Attendees
- Summit Presentation materials available on the SAWPA DCI webpage



Wade Crowfoot
California Natural
Resources Agency



Laurel Firestone
State Water Resources
Control Board



Yana Garcia
California Environmental
Protection Agency



SAWPA

Community Engagement Interns Program

Objective: Program, administered by the CSU DACCC, sought applications from public agencies and environmental or social justice NGOs for the services of pairs of interns to assist with community engagement or public affairs work related to disadvantaged communities, economically distressed areas, or underrepresented communities.

- Provided internships for students from the CSU, UC and community college campuses of the watershed.
- Activity Lead: CSUSB / Civic Sparks
- Placement 60 Interns (complete)



Public Outreach Services

Trust the Tap

Objective: Trust the Tap is a multi-lingual informational campaign focused on spreading awareness about the values and safety of tap water within communities of the watershed that have historically mistrusted the safety of water from the tap..

- Materials available in Spanish, Vietnamese, and English.
- Tool Kit includes:
 - Bill stuffers
 - Informational videos
 - News releases
 - Social media posts
 - Posters
 - Trifold brochures
 - Outreach plan
- Available on the SAWPA webpage

Translation Services

Objective: Translation services for documents and meetings.

- Multiple languages.
- Completed: 80 jobs at \$85 K



Trust the Tap! THE Tap! **OUTREACH TOOLKIT** for water agencies

Trust the Tap is a multi-lingual informational campaign focused on spreading awareness about the values and safety of tap water within communities of the watershed that have historically mistrusted the safety of water from the tap.

Water agencies can use the materials in the Trust the Tap toolkit to facilitate respectful, compassionate outreach with their constituents.

The Toolkit includes:

- Bill stuffers
- Informational videos
- News releases
- Social media posts
- Posters
- Trifold brochures
- Outreach plans

Materials in the Toolkit are available in Spanish, Vietnamese, and English.

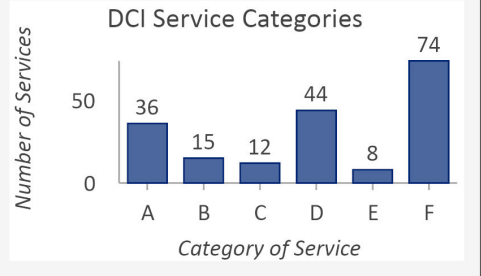
Trust the Tap is funded through the California Department of Water Resources Integrated Regional Water Management Proposition 1 Disadvantaged Community Involvement grant program, developed by Degrove Communications, and administered through SAWPA.

Access the Toolkit: <https://bit.ly/2mikUnK>

Questions? Contact: DCIProgramTeam@sawpa.org 951-354-4236



SAWPA Disadvantaged Community (DAC) Involvement Program - DAC Census Block Groups Benefited

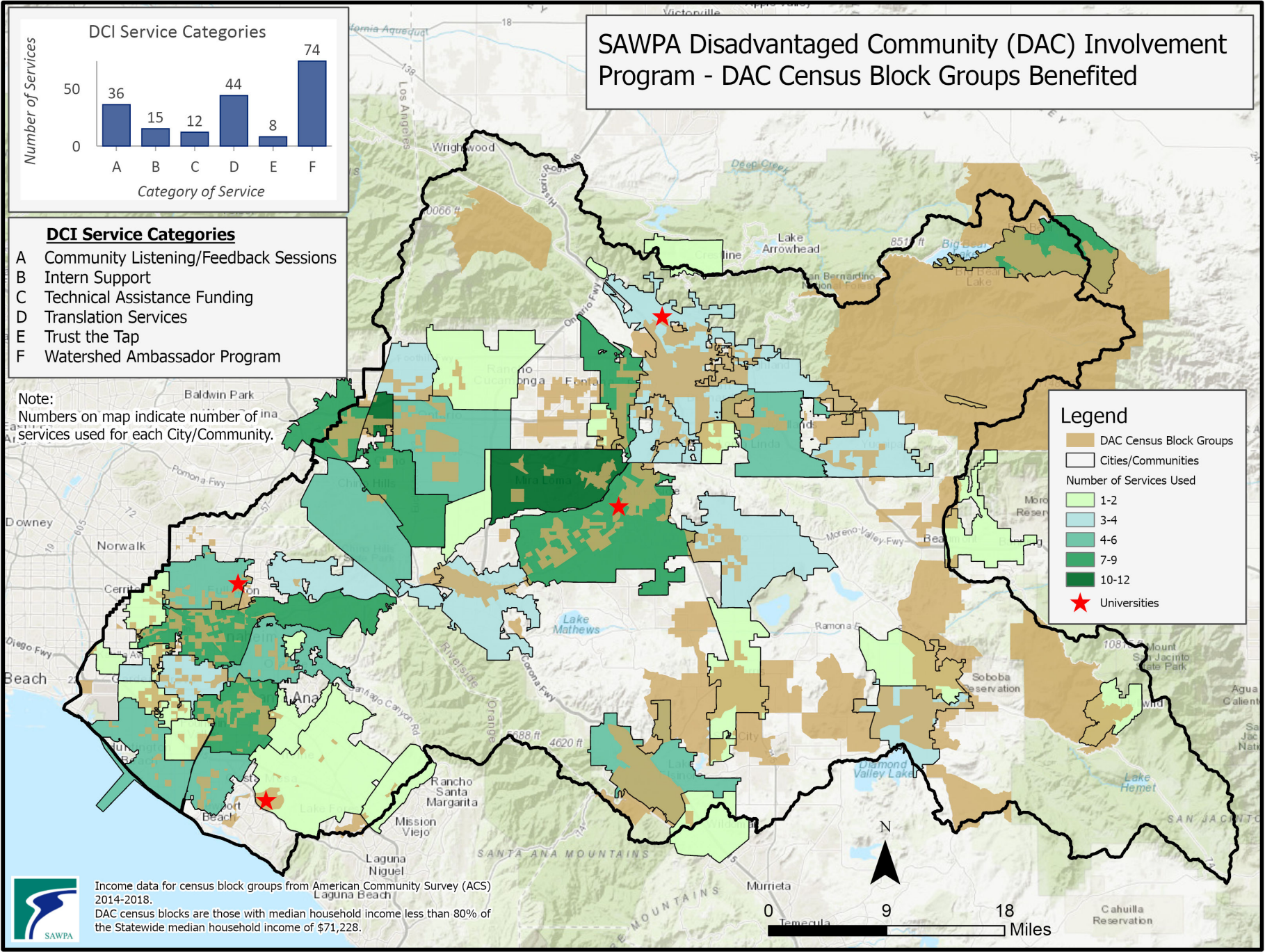


- DCI Service Categories**
- A Community Listening/Feedback Sessions
 - B Intern Support
 - C Technical Assistance Funding
 - D Translation Services
 - E Trust the Tap
 - F Watershed Ambassador Program

Note:
Numbers on map indicate number of services used for each City/Community.

Legend

- DAC Census Block Groups
- Cities/Communities
- Number of Services Used**
- 1-2
- 3-4
- 4-6
- 7-9
- 10-12
- Universities



Income data for census block groups from American Community Survey (ACS) 2014-2018.
DAC census blocks are those with median household income less than 80% of the Statewide median household income of \$71,228.



Program Element 3 - Project Development

Technical Assistance for Community Need

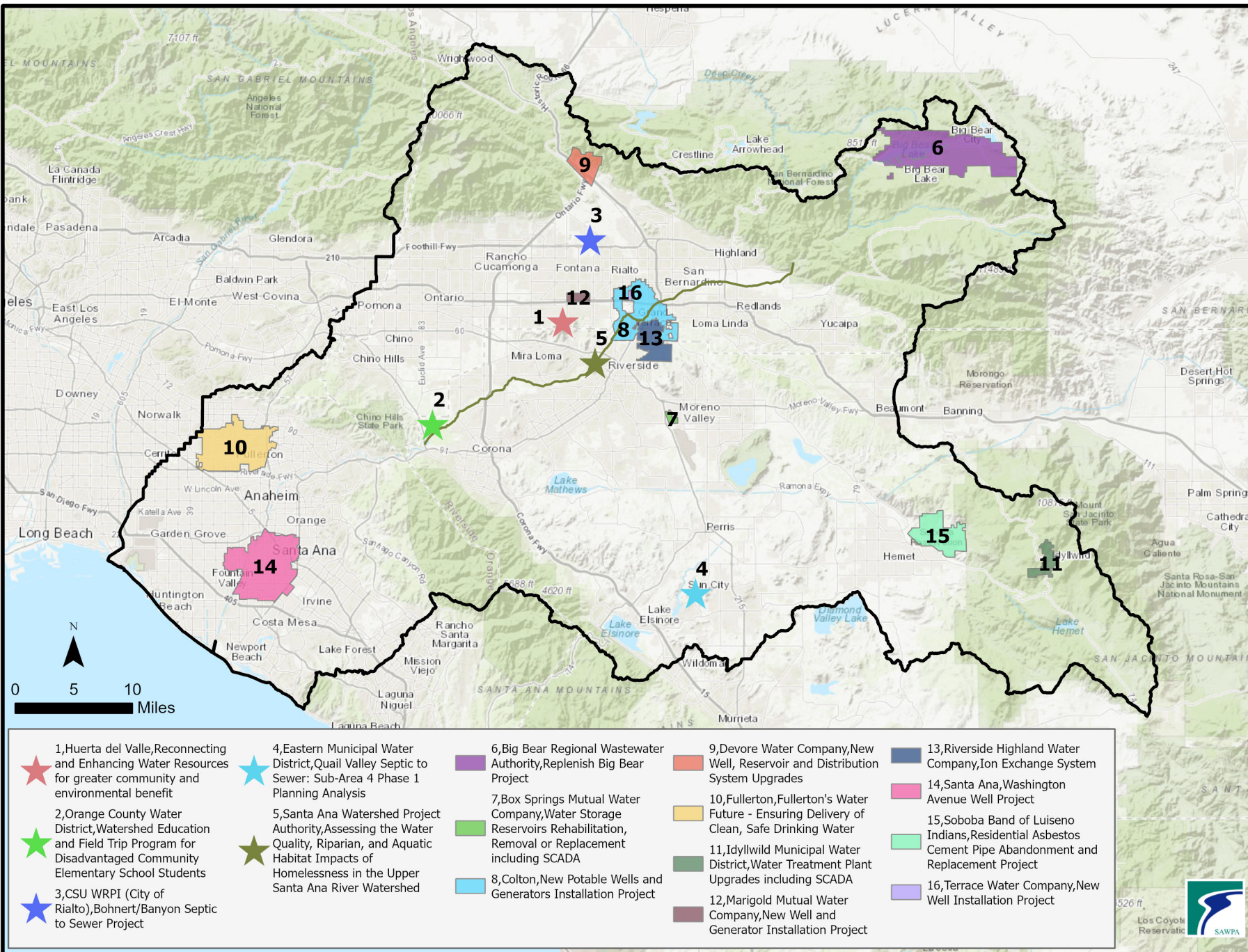
Objectives:

- Building upon what was learned through the outreach and engagement efforts to overburdened and underserved communities a suite of potential project and program types were identified as eligible to receive technical assistance funding.
- Develop evaluation criteria to rate, rank and score the potential projects, plans and programs.
- Allocated Technical Assistance funding.
- Allocated Funding \$2.9 M



DCI Program Technical Assistance Funding		
TA Award	Project Sponsor:	Project Title:
\$25,000	CSU WRPI	Median Household Income Surveys
\$75,000	SAWPA	Assessing the Water Quality, Riparian, and Aquatic Habitat Impacts of Homelessness in the Upper Santa Ana River Watershed
\$350,000	Soboba Band of Luiseno Indians	Residential Asbestos Cement Pipe Abandonment and Replacement Project
\$500,000	Big Bear Area Regional Wastewater Agency	Replenish Big Bear
\$150,000	California Rural Water Association	Tribal Advisory Committee (Tribal AC)
\$175,000	Box Springs MWC	Rehabilitation, Removal or Replacement of Water Storage Reservoirs with SCADA
\$200,000	City of Colton	Two New Potable Wells with Generators
\$100,000	Devore WC	New Reservoir, Distribution System Upgrades and New Well
\$150,000	Idyllwild WD	Water Treatment Plant Upgrade with SCADA
\$100,000	Marygold MWC	New Well and Generator Project
\$25,000	Riverside Highland WC	Ion Exchange System
\$250,000	Terrace MWC	New Potable Well
\$200,000	Eastern Municipal WD	Quail Valley Sub-Area 4 Septic to Sewer, Phase 1 Planning Analysis
\$250,000	City of Rialto	Bohnert/Banyon Septic to Sewer Project
\$100,000	Orange County WD	Watershed Education and Field Trip Program for Disadvantaged Community Elementary School Students
\$100,000	City of Fullerton	Fullerton's Water Future - Ensuring Delivery of Clean, Safe Drinking Water
\$50,000	Huerta del Valle	Reconnecting and Enhancing Water Resources for greater community and environmental benefit.
\$100,000	City of Santa Ana	Washington Avenue Well Project

Technical Assistance Projects



Conclusions & Recommendations

- Core community concerns to be addressed:
 - Language Barriers
 - Communication
 - Tap Water Quality
- Recommendations to water decision-makers
 - Devote staff to maintaining long-term relationships with community-based that have relationships with underrepresented and overburdened communities.
 - Work directly with community-based organizations to hear and respond to the localized concerns that people have about tap water.
 - Design strong and inclusive working group structures that are able to connect the strengths and needs surfaced by communities to actionable projects and programs.
 - More regional involvement and support is needed for small water community systems/mutual water companies serving disadvantaged communities
 - Continue to fund disadvantaged community involvement programs.



SAWPA Disadvantaged Community Involvement Program Webpage

Direct links to the Disadvantaged Community Involvement Program resources and materials can be found at:

<https://sawpa.org/owow/dci-program/>



Questions

