



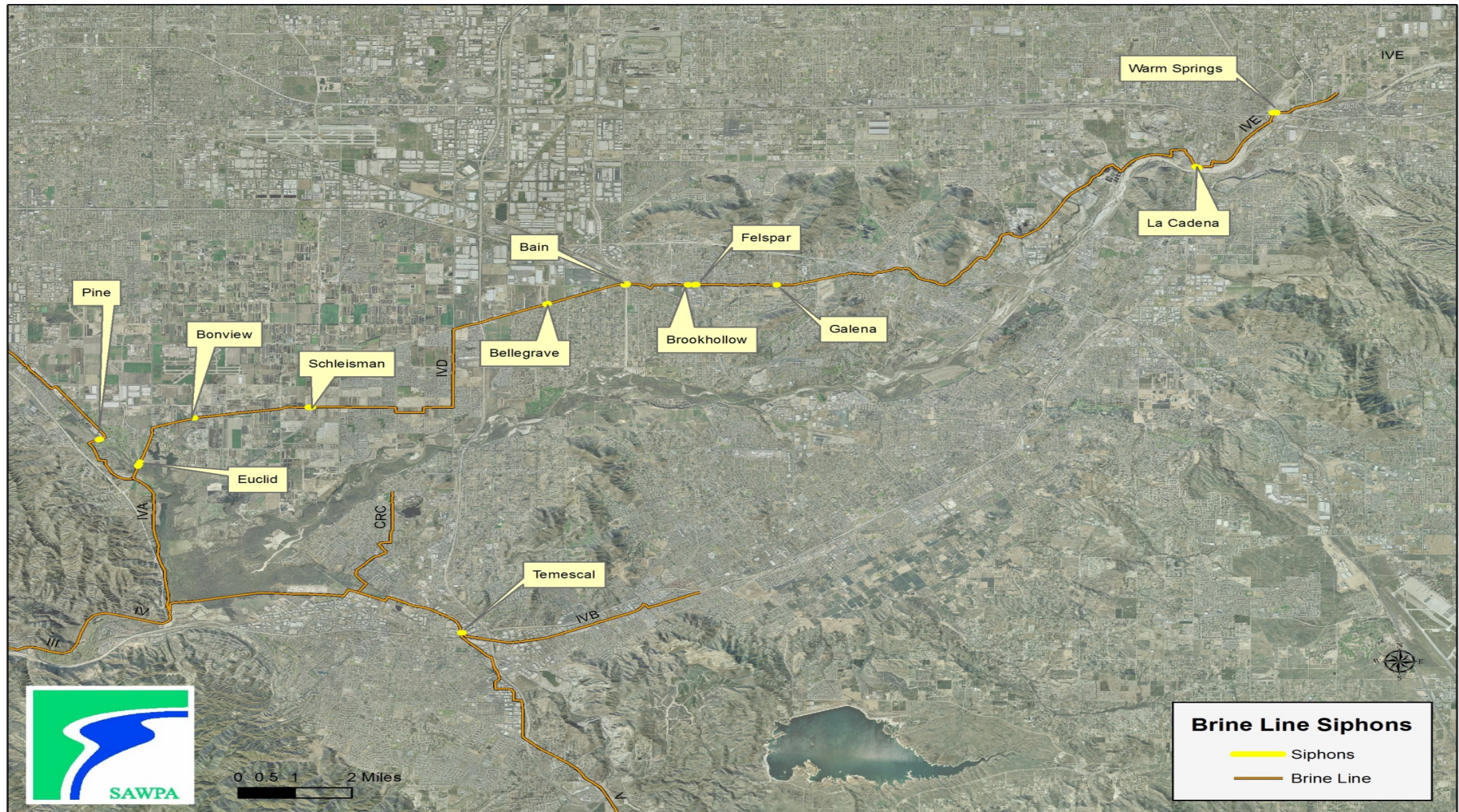
Santa Ana Watershed Project Authority

Inland Empire Brine Line
On-Call Pipe Cleaning Services
Pre-Proposal Meeting
April 15, 2020

Brine Line On-Call Pipe Cleaning Services Agenda

- Introductions
- Project Description
- Overview of RFP
 - General Proposal Requirements
 - Technical and Cost Proposal
 - Proposal Evaluation Criteria
- Scope of Work
 - Pipe Cleaning Requirements and Material Disposal
 - Submittals
 - Permitting
 - Reaches proposed for cleaning and schedule restrictions

Brine Line On-Call Pipe Cleaning Services



Brine Line On-Call Pipe Cleaning Services

SIPHONS	Length (ft)	Diameter (in)	Traffic Control
Chino/Pine	151	24	NO
Temescal	178	18	NO
Galena	70	39	YES
Felspar	217	39	YES
Brookhollow	63	39	YES
Bain (Cantú-Galleano)	294	39	YES
Bellegrave	197	42	YES
Schelisman	402	42	YES
Bonview	42	42	YES
Euclid	621	42	YES
La Cadena	380	36	NO
Warm Springs	377	36	NO

Line Cleaning - Effort

Item	Quantities
Line Cleaning Large Diameter – Normal	160 hours
Line Cleaning – Emergency (2 hr response time)	20 hours
Line Cleaning Small Diameter	160 hours
Water truck (2,000 gallon minimum)	340 hours
CCTV (in support of line cleaning)	20 hours
Traffic control plans	4 units
Traffic control – light (1/2 day)	4 units
Traffic control – heavy (1/2 day)	4 units
Traffic control – light (full day)	20 units
Traffic control – heavy (full day)	4 units
Caltrans permit	2 units

Brine Line On-Call Pipe Cleaning Services Proposal Requirements

- Due: May 6, 2020 (2:00 pm)
- Questions due: April 14, 2020 (12:00 pm)
- Original plus three (3) copies, including PDF version, if mailed
- Scanned PDF and e-mailed
- Due to COVID-19, no hand-delivered proposals
- Proposal contents
 - Letter of offer, technical proposal
 - Cost proposal (separate sealed envelope, or file)

Brine Line On-Call Pipe Cleaning Services Letter of Offer

- Name, qualifying licenses, certifications, information
- Relationship with subcontractors
- Contact person
- Statement of valid proposal for 90 days
- Signature of authorized person

Brine Line On-Call Pipe Cleaning Services Technical Proposal

- Qualifications, experience, references
 - Firm profile
 - Financial condition
 - Experience
 - List of subcontractors
 - Minimum of 3 references
 - Equipment
 - Compliance and training

Brine Line On-Call Pipe Cleaning Services Technical Proposal

- Staffing and project organization
 - Education, experience, credentials
 - Identify key personnel and subcontractors
 - Organizational chart
 - Statement regarding key personnel available during duration of the project

Brine Line On-Call Pipe Cleaning Services Technical Proposal

- Work Plan
 - Approach for proposed siphons
 - Outline of activities and identify who will perform them
 - Quality control, schedule, and budget control
- Exceptions / Deviations
 - Technical
 - Contractual
- Appendices

Brine Line On-Call Pipe Cleaning Services Cost Proposal

- Cost Proposal includes:
 - Cost proposal form
 - Non-collusion affidavit
 - Acknowledgement of insurance requirements
 - Acknowledgement of addenda (if any)

Brine Line On-Call Pipe Cleaning Services Proposal Evaluation Criteria

- Qualifications, including available equipment and experience
- Staffing and project organization
- Work plan
- Cost
- Completeness of response

Brine Line On-Call Pipe Cleaning Services

Cleaning Equipment

- Combination of high-velocity hydro cleaning and vacuum removal equipment
 - Capable of performing under surcharged conditions
 - 1,000 feet of 1-inch Ø diameter hose
 - 2,000 psi at 100 gpm
 - Selection of high-velocity nozzles
- One 2,000 gallon water truck at a minimum

Brine Line On-Call Pipe Cleaning Services

Pipe Cleaning

- Water from closest available hydrant
- Contractor shall make arrangements to obtain meters and equipment

Brine Line On-Call Pipe Cleaning Services

Material Disposal

- Contractor shall be responsible for the removal of debris from cleaning. Passing material from MH section to MH section shall not be permitted
- Debris deposited in water-tight dewatering roll-off bins or standard roll-off bins, as directed by Owner
- Owner will provide at least 1 designated area for staging dewatering bins and dewatering back to Brine Line
- Owner will provide preparation of MH for draining
- Contractor shall not modify any MH

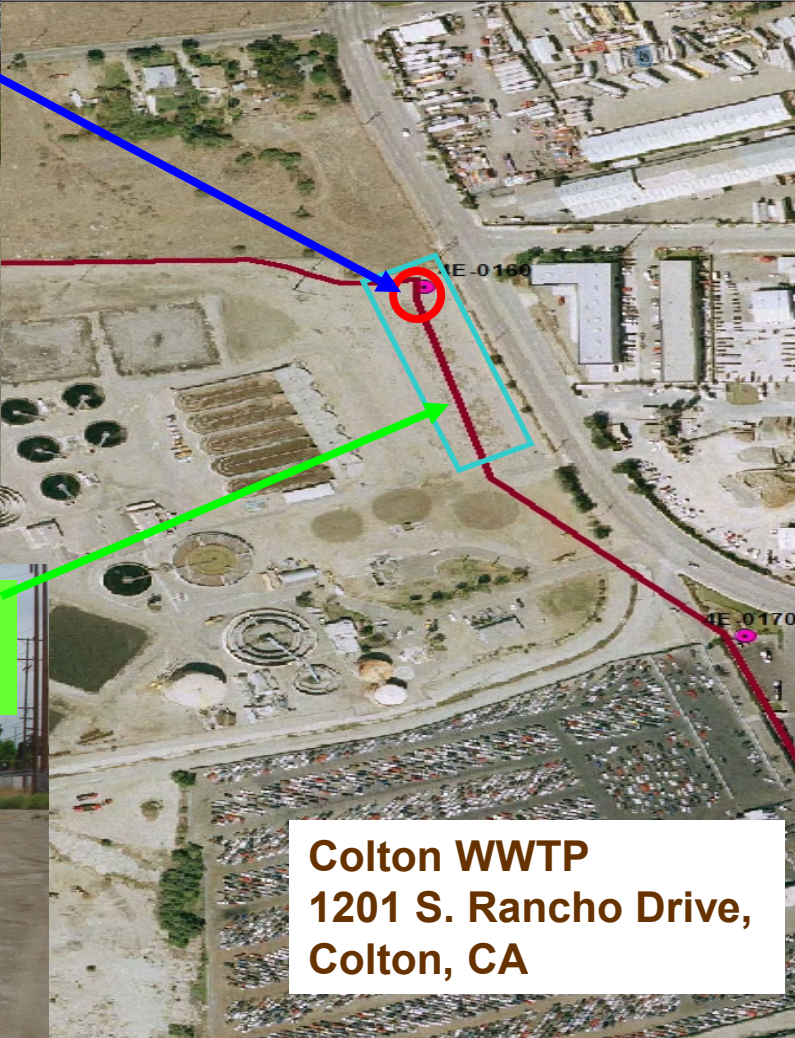
Colton Wastewater Treatment Plant



Draining
MAS



Staging
Area

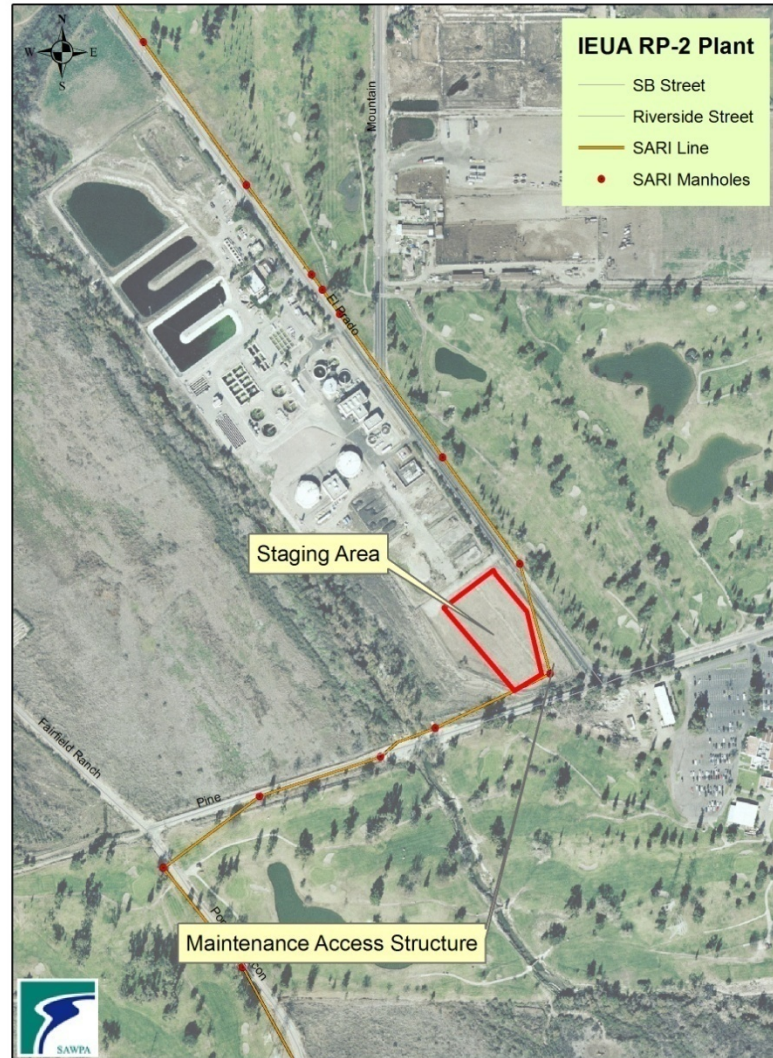


Colton WWTP
1201 S. Rancho Drive,
Colton, CA

Staging Area - Corona



IEUA RP-2



Brine Line On-Call Pipe Cleaning Services Submittals

- Pre-cleaning
 - Including Spill Response Plan
- Traffic control plans
 - Prepare and submit to SAWPA
- Quarterly report
 - Siphons cleaned, including time, length etc.
 - Sonar scans showing siphons were cleaned properly
 - Weight tickets
 - Type of solids collected (include photographs)

Brine Line On-Call Pipe Cleaning Services

Traffic Control / Permits

- SAWPA will obtain permits from the appropriate agencies (Riverside County, City of Chino, Caltrans, Riverside County Flood Control and Water Conservation District). Caltrans may require a double permit, in which case the Contractor shall pull a permit.
- Contractor shall prepare traffic control plans and submit to SAWPA, as requested; in addition, the Contractor shall provide traffic control during pipe cleaning, if requested by SAWPA.

Brine Line On-Call Pipe Cleaning Services Schedule / Timing Restrictions

- Work in Caltrans right-of-way is limited between the hours of 9:30 am and 3:30 pm, unless indicated otherwise in the City issued permit.
- Work in the City of Chino is limited between the hours of 8:30 am and 3:30 pm, unless indicated otherwise in the City issued permit.

Brine Line On-Call Pipe Cleaning Services

- In addition to siphon cleaning, SAWPA will require:
 - On-call pipe cleaning services for other parts of the system, various materials/diameters
 - Pipe cleaning services during emergencies REQUIRE a 2-hour response time

Questions?

Carlos Quintero

cquintero@sawpa.org

(951) 354-4234