

SAWPA-WMWD Mutual Aid Agreement

Carlos Quintero, Operations Manager
PA24 Committee | November 3, 2020
Item No. 5.A.

Recommendation

- Authorize the General Manager to execute the Mutual Aid Agreement between Western Municipal Water District (WMWD) and the Santa Ana Watershed Project Authority (SAWPA).

Inland Empire Brine Line

— Brine Line Laterals

Brine Line

REACH

— IV

— IVA

— IVB

— IVD

— IVE

— V

Section covered under the
IEUA-SAWPA Agreement



IEUA

SBVMWD

WMWD

EMWD

OCWD

5 2.5 0 5 Miles



SAWPA-WMWD Mutual Aid Agreement

- WMWD has historically supported Brine Line Operations under previous O&M agreements
- SAWPA has been hiring operations staff and is self-performing most day-to-day activities
- The existing O&M agreement is no longer needed

SAWPA-WMWD Mutual Aid Agreement

- Agreement allows WMWD or SAWPA to provide assistance to each other during emergencies.
- Actual costs to be paid by the Agency receiving mutual aid.

Recommendation

- Authorize the General Manager to execute the Mutual Aid Agreement between Western Municipal Water District (WMWD) and the Santa Ana Watershed Project Authority (SAWPA).



Questions??

Inland Empire Brine Line Reach 5 Valve Replacement

Carlos Quintero, Operations Manager
PA24 Committee | November 3, 2020
Item No. 5.B.

Recommendation

- Receive and file

Inland Empire Brine Line

— Brine Line Laterals

Brine Line REACH

— IV

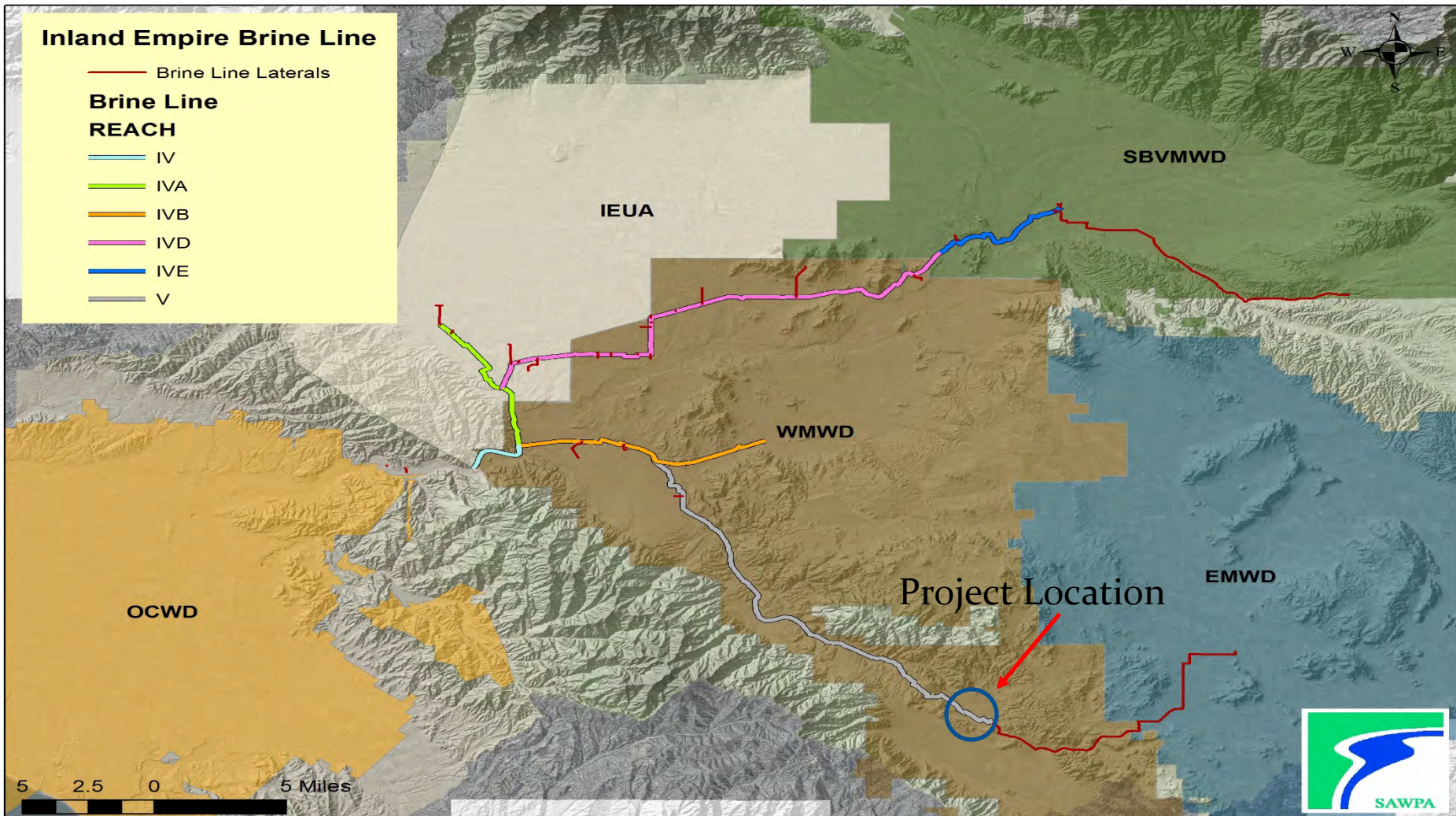
— IVA

— IVB

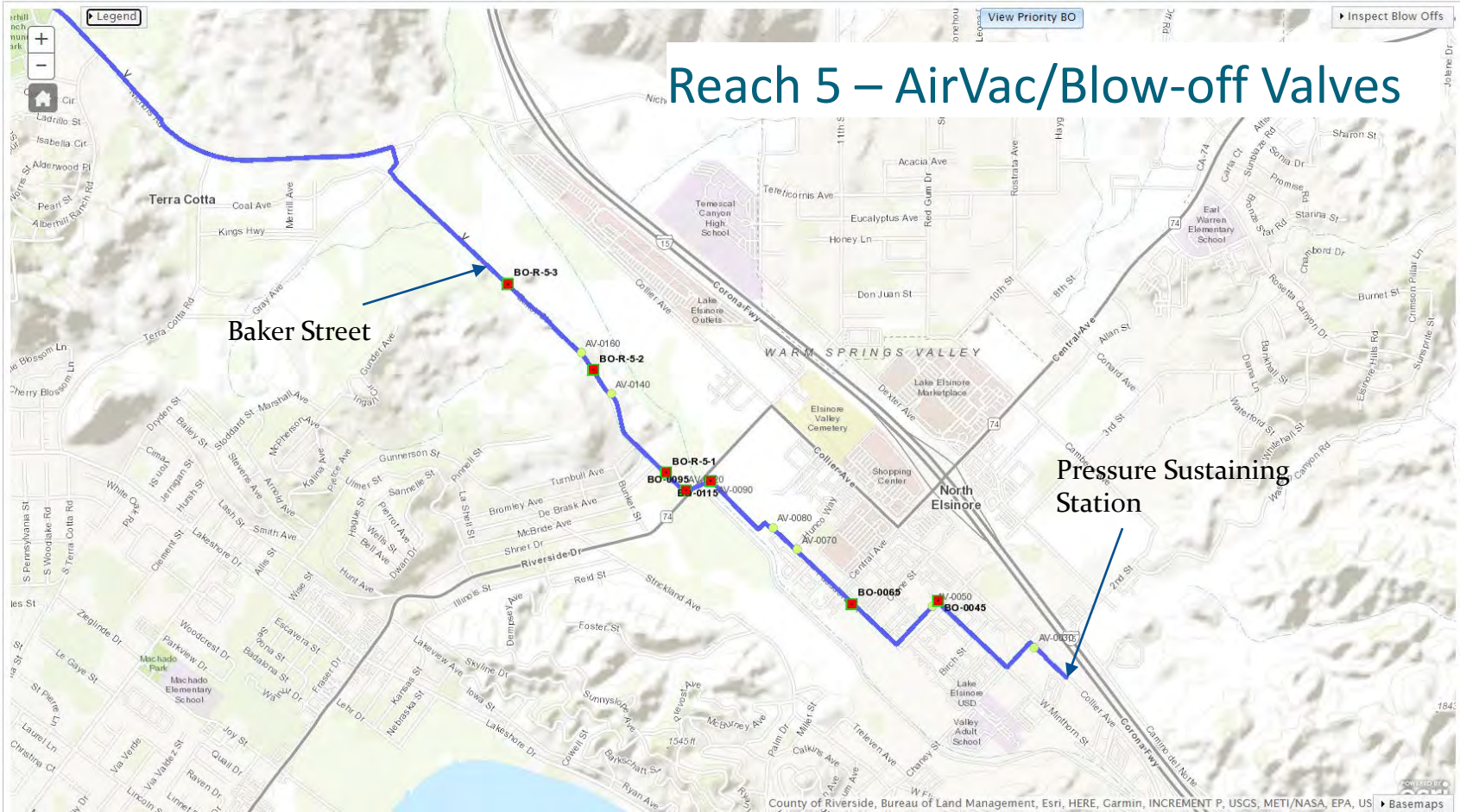
— IVD

— IVE

— V



- Brine Line Tools
 - LandUse
 - Service Area
 - Charts
 - Record Drawings
 - DigAlert
 - Inspections
 - MAS
 - MAS View
 - AV
 - AV View
 - BO**
 - BO View
 - Reach
 - Reach View
 - Work Hours
 - Status
 - Open/Close
 - Service Requests
 - Equipment
 - Easements
 - SSO

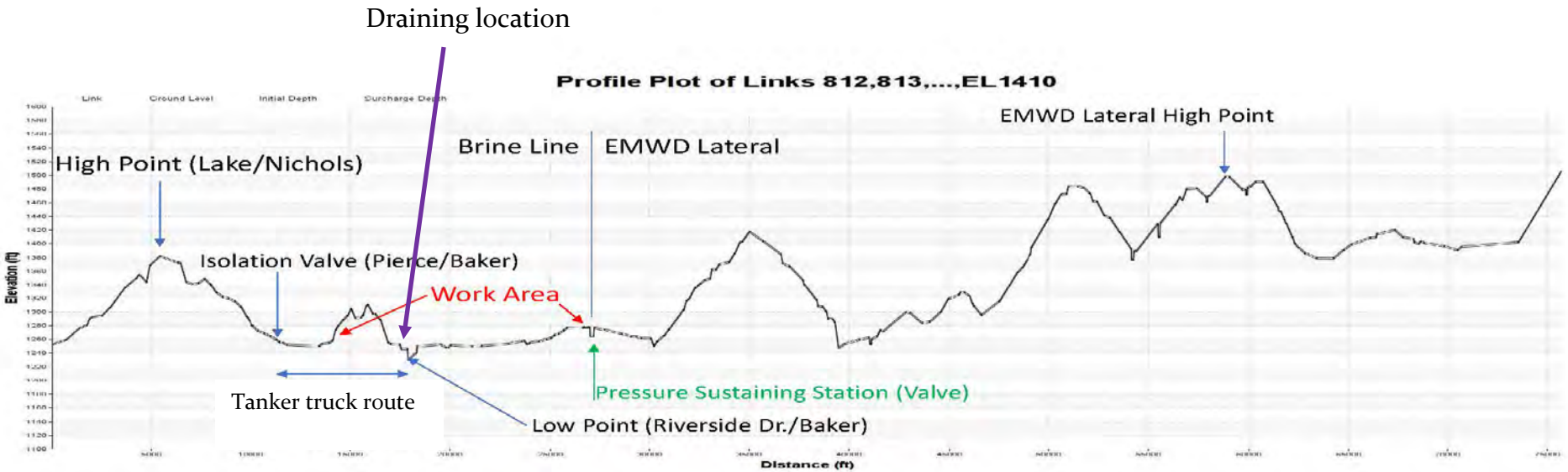


Reach 5 – AirVac/Blow-off Valves

Baker Street

Pressure Sustaining Station

Reach 5 – Hydraulic Profile



←
Flow Direction

↑ Section requiring draining (~400,000 gallons) ↓

Shutting off valves isolates this area

Blow-off on Baker Street



2019.05.07 15:09



Draining blow-off – Baker Street

Blow-off on Baker Street



05/02/2019 10:25

2019.05.07 15:14

Pasadena Street



Brine Line Blow-off

2019.05.07 15:27

Line Draining



- Use of 5,000 gallon tanker trucks to drain between 250,000 to 400,000 gallons.
- Cost about 1/3 (\$25,000) of installing a 6,400 ft flow bypass pipe/pump system

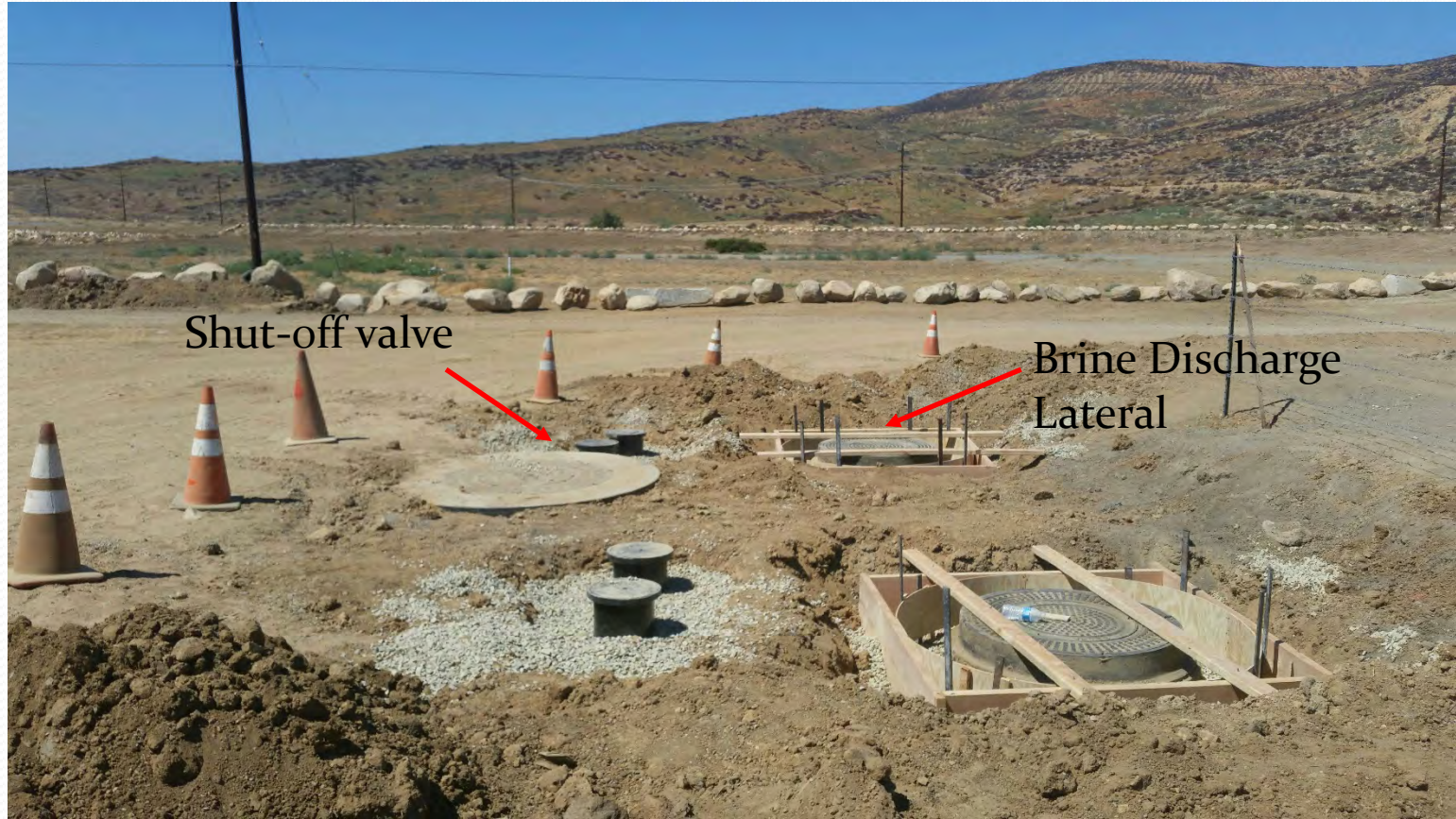
Recommendation

- Receive and file.

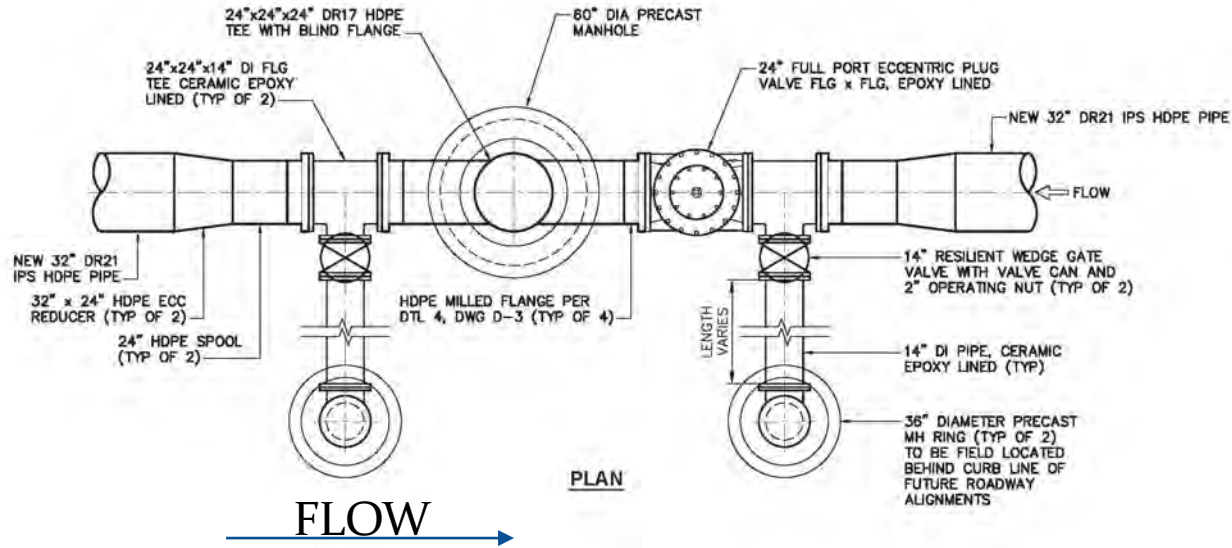


Questions??

MAS at Baker/Pierce Street



MAS at Baker/Pierce (detail)



MAINTENANCE ACCESS STRUCTURE - B DETAIL

SCALE: 3/8"=1'-0"

1
VARIES

3/17/16	PC/NH	KEP		CONFORMED DRAWINGS	DESIGNED BY: DMW	<p>UNDERGROUND SERVICE ALERT CALL: TOLL FREE 1-800-227-2600</p>	<p>D 605 Th 760.</p>
					DRAWN BY: CSD		
					CHECKED BY: DMW		
					CHECKED BY: ---		
1/27/17	NH	JS		RECORD DRAWINGS	APPROVED BY: ---		
DATE	DRWN	CHKD	CITY APPROVAL	DATE	REMARKS		