

Brine Line Flows FY19-20

Carlos Quintero, Operations Manager

PA24 Committee | August 4, 2020

Item No. 5.A.

Recommendation

- Receive and file

Inland Empire Brine Line

— Brine Line Laterals

Brine Line

REACH

— IV

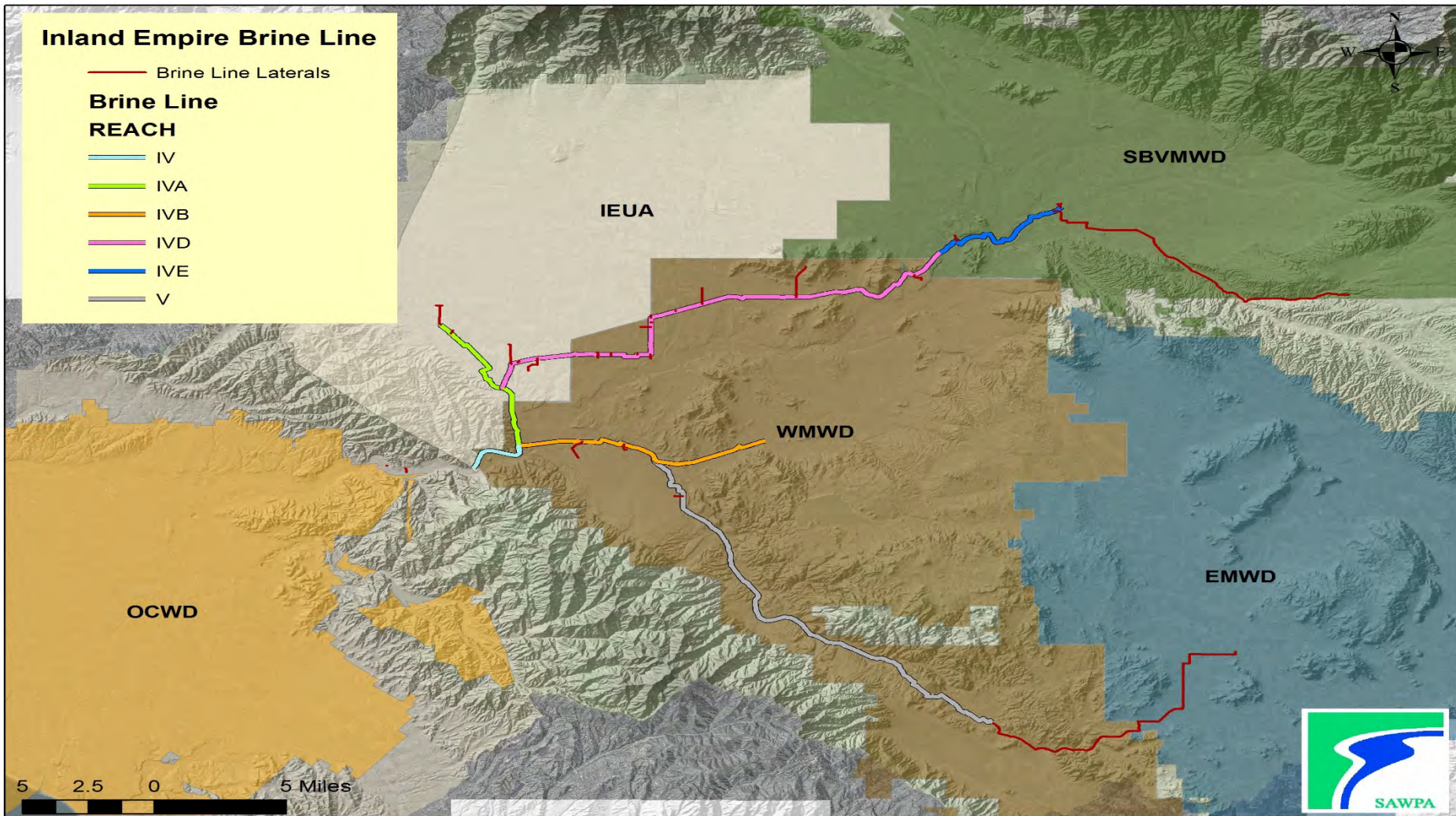
— IVA

— IVB

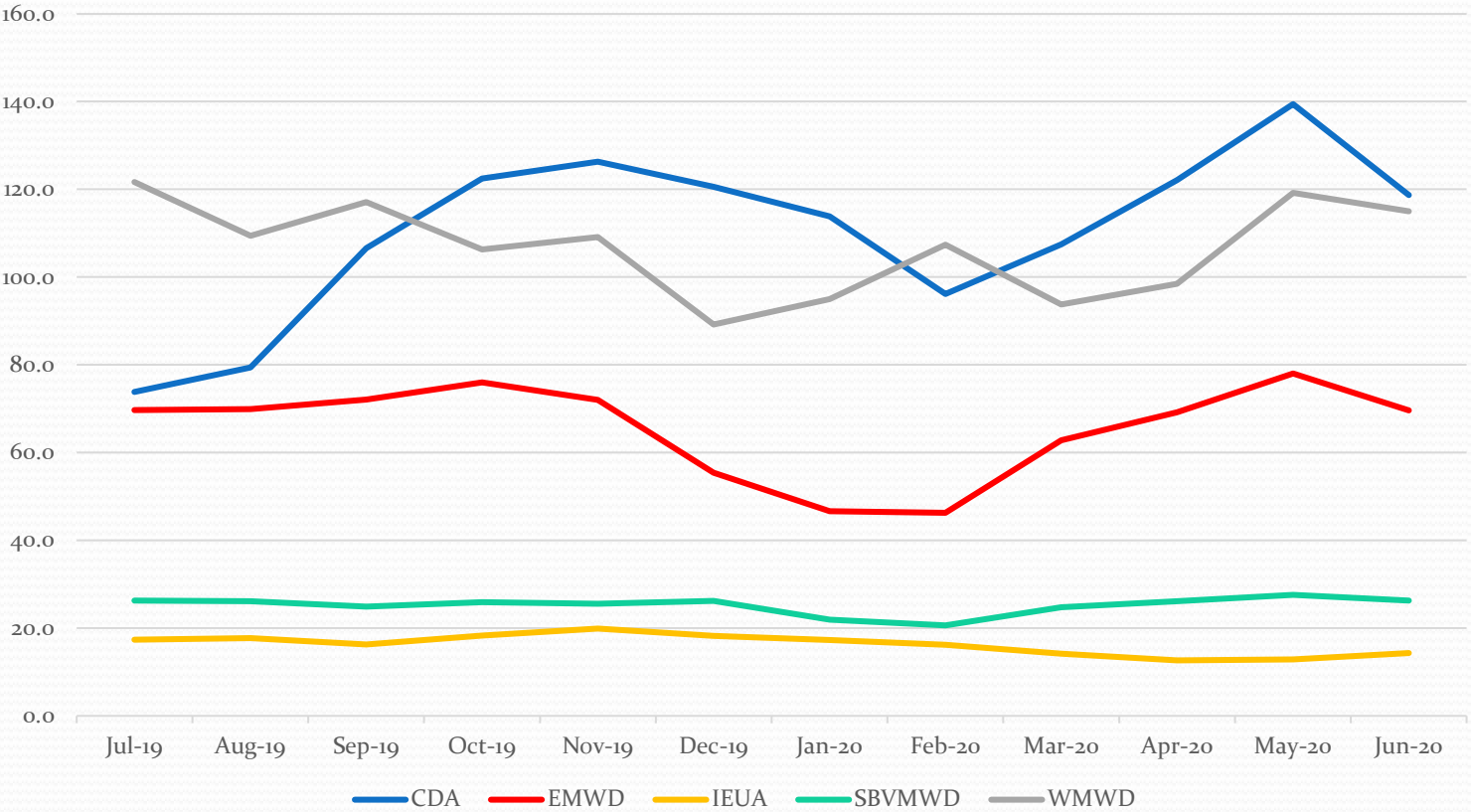
— IVD

— IVE

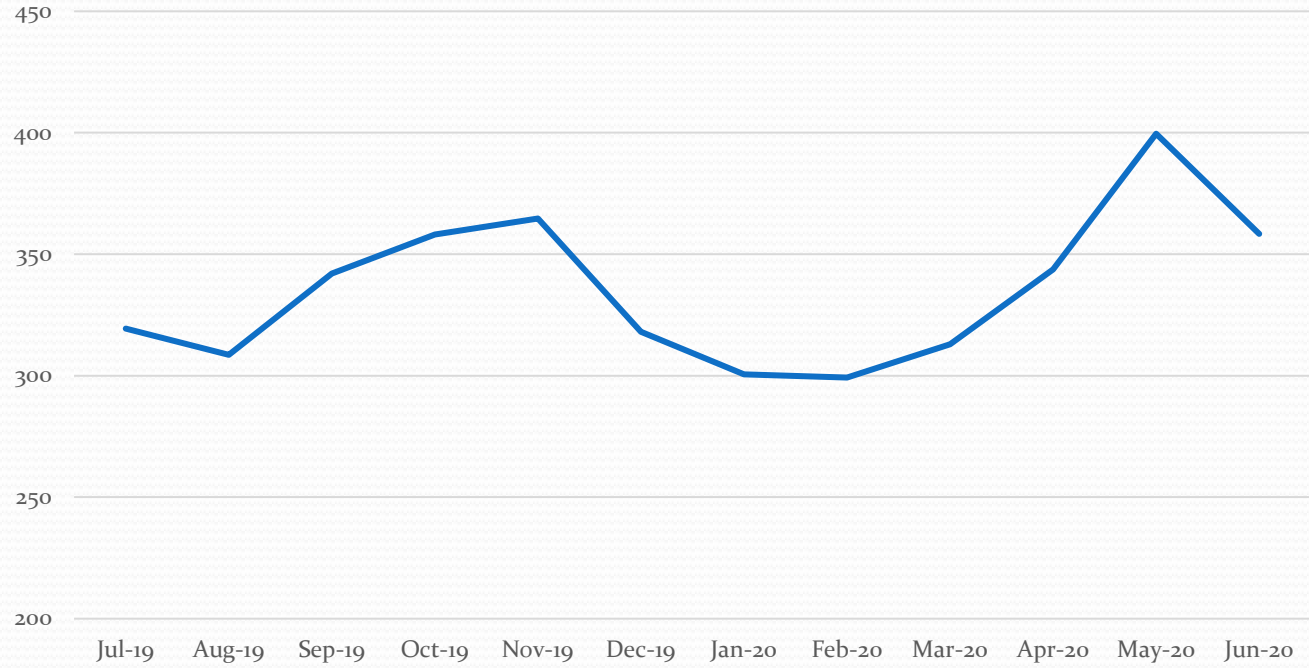
— V



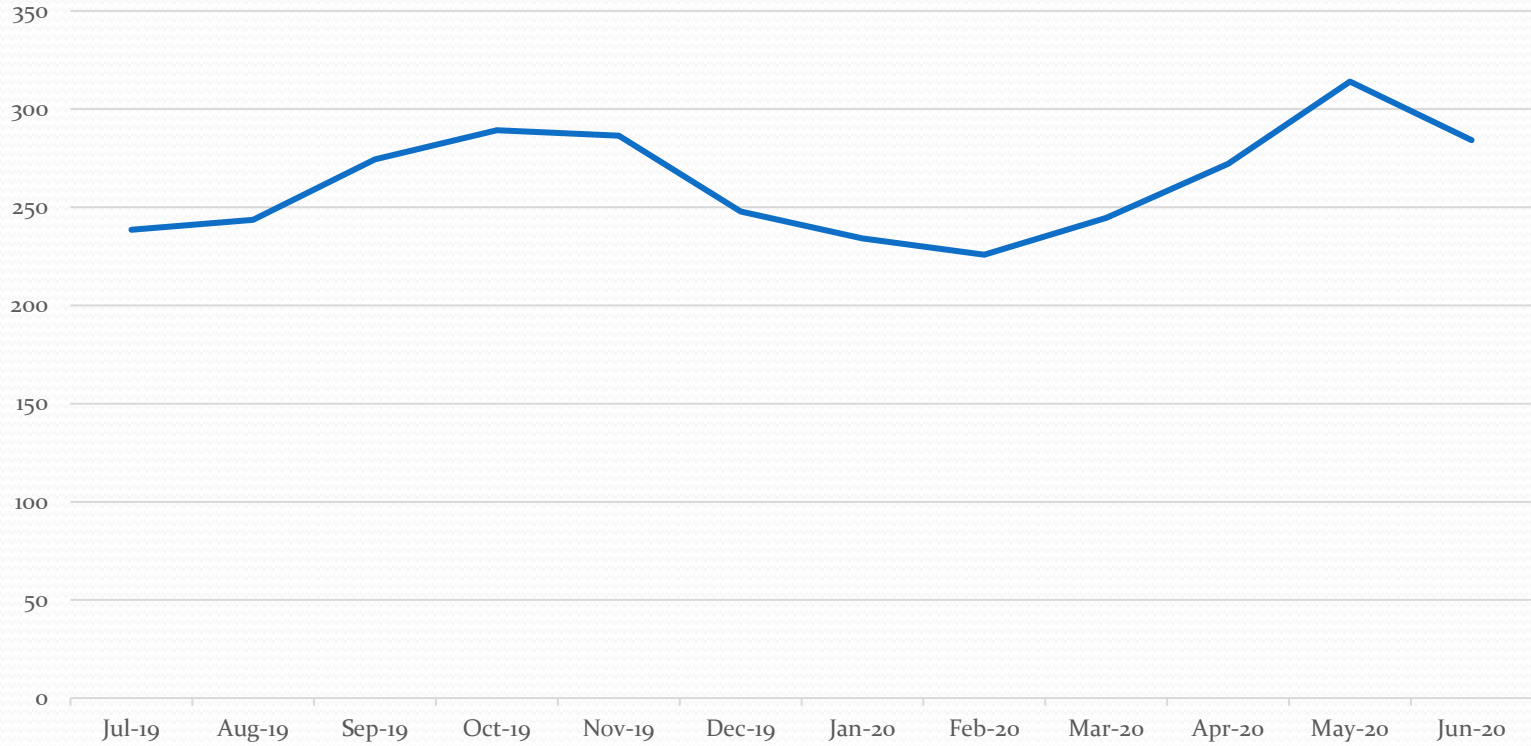
FLOW BY AGENCY (MG)



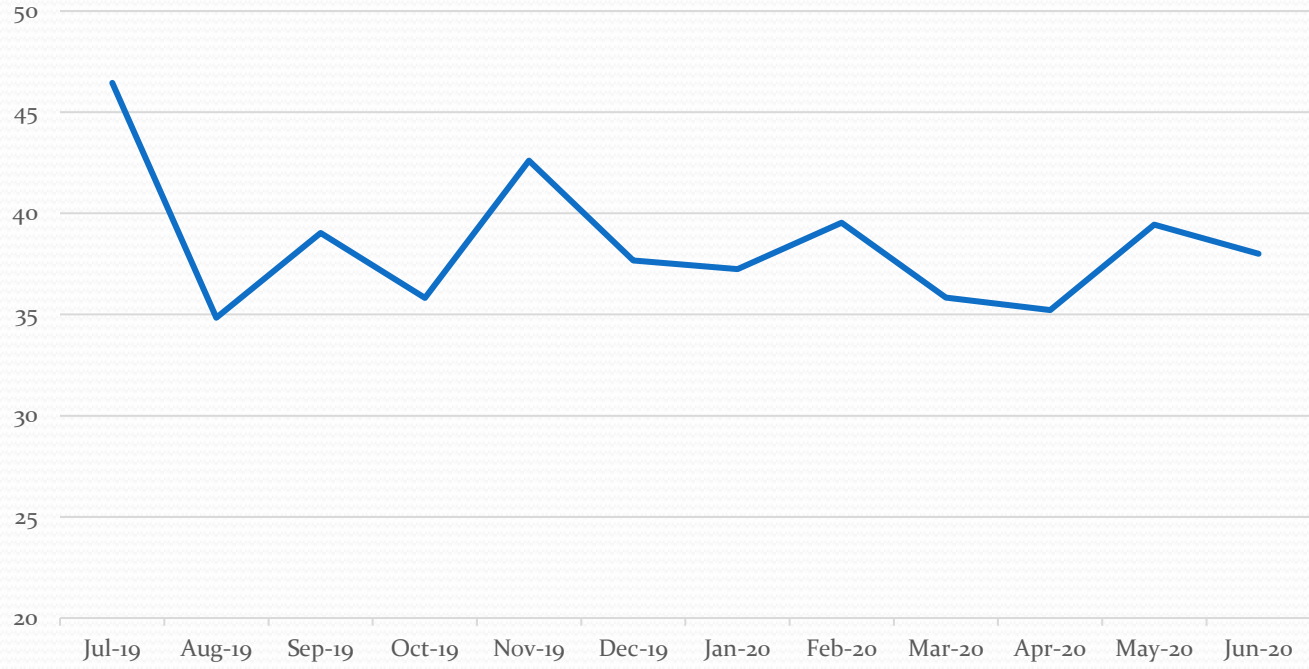
S-01 TOTAL (MG)



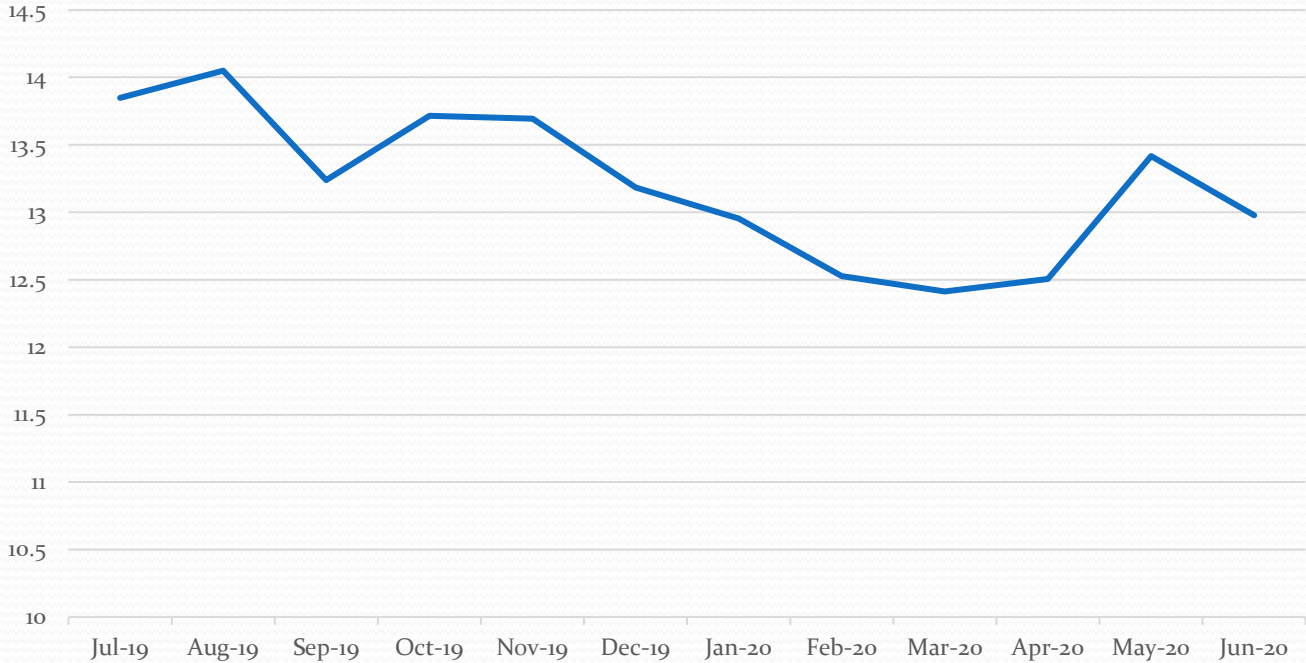
Desalters/IX/Reclaimed Wastewater



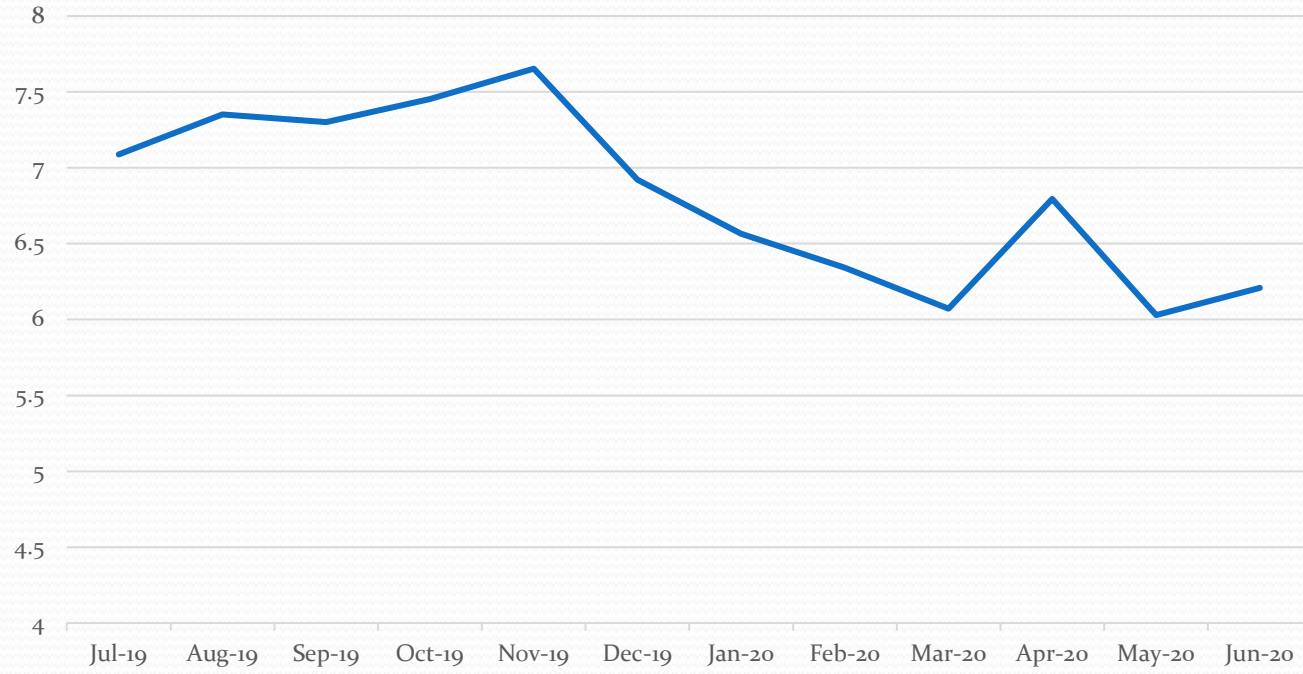
Industrial



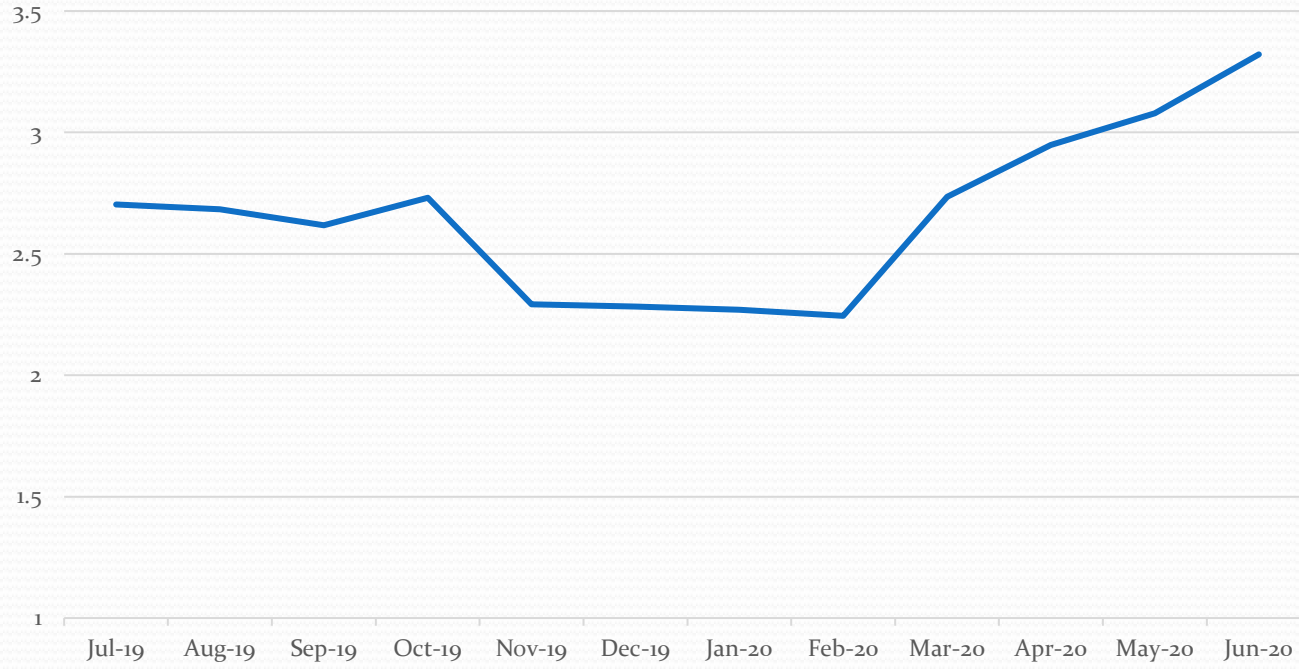
Power Plants



Domestic



Collection Stations



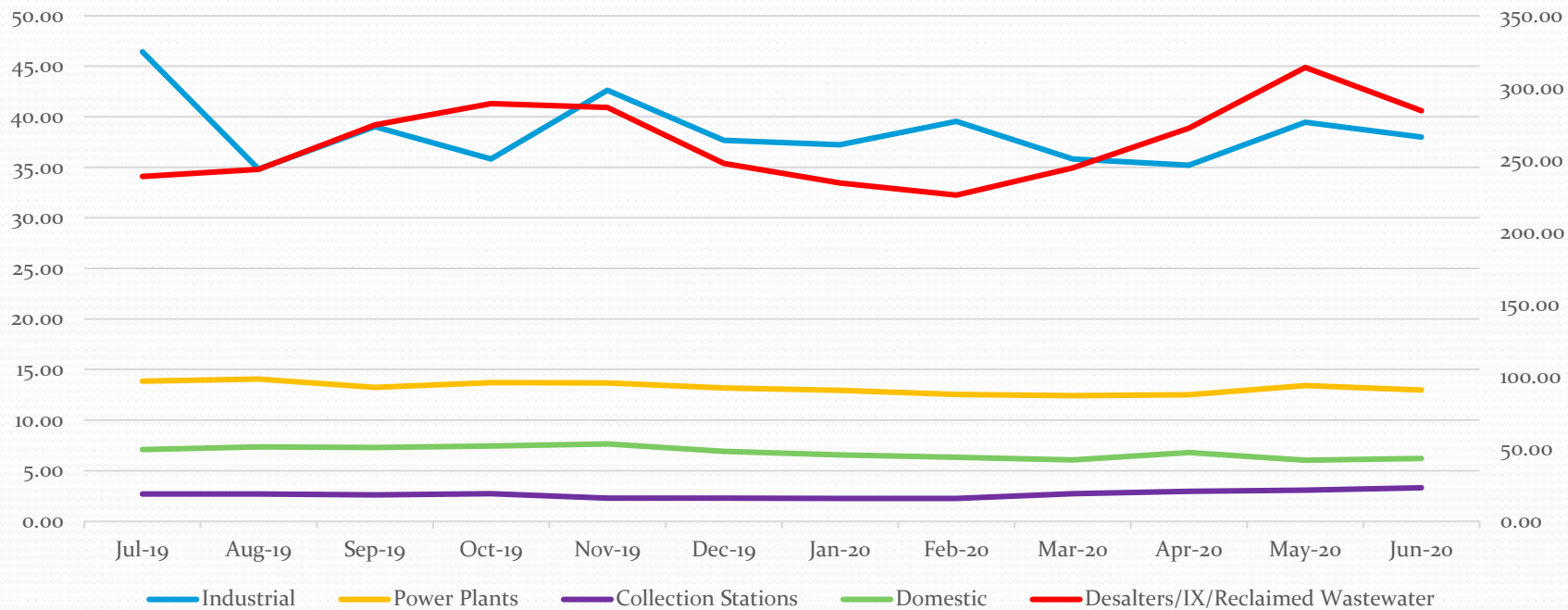
Other Brine Line Statistics

| Parameter | Quantity | Units |
|--------------------------------|-------------|-----------------|
| Flow | 4,025 | Million Gallons |
| Biochemical Oxygen Demand | 527 | Tons |
| | 1,054,000 | lbs |
| Total Suspended Solids | 1,336 | Tons |
| | 2,672,000 | lbs |
| Salt Removed (TDS) | 97,213 | Tons |
| | 194,426,000 | lbs |
| Direct Dischargers | 26 | Dischargers |
| Indirect Dischargers | 17 | Dischargers |
| USA Digalerts Tickets Received | 3,632 | Tickets |
| Sewer System Overflows | 0 | SSOs |

Flows by Category (MG)

| Category | Jul-19 | Aug-19 | Sep-19 | Oct-19 | Nov-19 | Dec-19 | Jan-20 | Feb-20 | Mar-20 | Apr-20 | May-20 | Jun-20 | TOTAL |
|-----------------------------------|--------|--------|--------|--------|--------|--------|--------|--------|--------|--------|--------|--------|----------|
| Desalters/IX/Reclaimed Wastewater | 238.61 | 243.56 | 274.43 | 289.19 | 286.52 | 247.78 | 234.14 | 225.78 | 244.62 | 272.14 | 314.05 | 284.13 | 2,992.27 |
| Industrial | 46.44 | 34.84 | 39.02 | 35.83 | 42.61 | 37.66 | 37.24 | 39.54 | 35.83 | 35.22 | 39.45 | 38.00 | 567.50 |
| Power Plants | 13.85 | 14.05 | 13.24 | 13.72 | 13.69 | 13.18 | 12.95 | 12.53 | 12.41 | 12.51 | 13.42 | 12.98 | 158.53 |
| Collection Stations | 2.70 | 2.68 | 2.62 | 2.73 | 2.29 | 2.28 | 2.27 | 2.24 | 2.74 | 2.95 | 3.08 | 3.32 | 23.57 |
| Domestic | 7.09 | 7.35 | 7.30 | 7.45 | 7.65 | 6.92 | 6.57 | 6.34 | 6.07 | 6.79 | 6.03 | 6.21 | 80.97 |
| S-01 TOTAL | 319.37 | 308.58 | 341.97 | 358.13 | 364.63 | 318.03 | 300.59 | 299.24 | 312.95 | 343.69 | 399.63 | 358.38 | 4,025.18 |

Discharges by Category (MG)



Recommendation

- Receive and file



Questions??

Maintenance Access Structure

PVC Liner Repairs

Carlos Quintero, Operations Manager

PA24 Committee | August 4, 2020

Item No. 5.B.

Recommendation

- Receive and file

Inland Empire Brine Line

— Brine Line Laterals

Brine Line

REACH

— IV

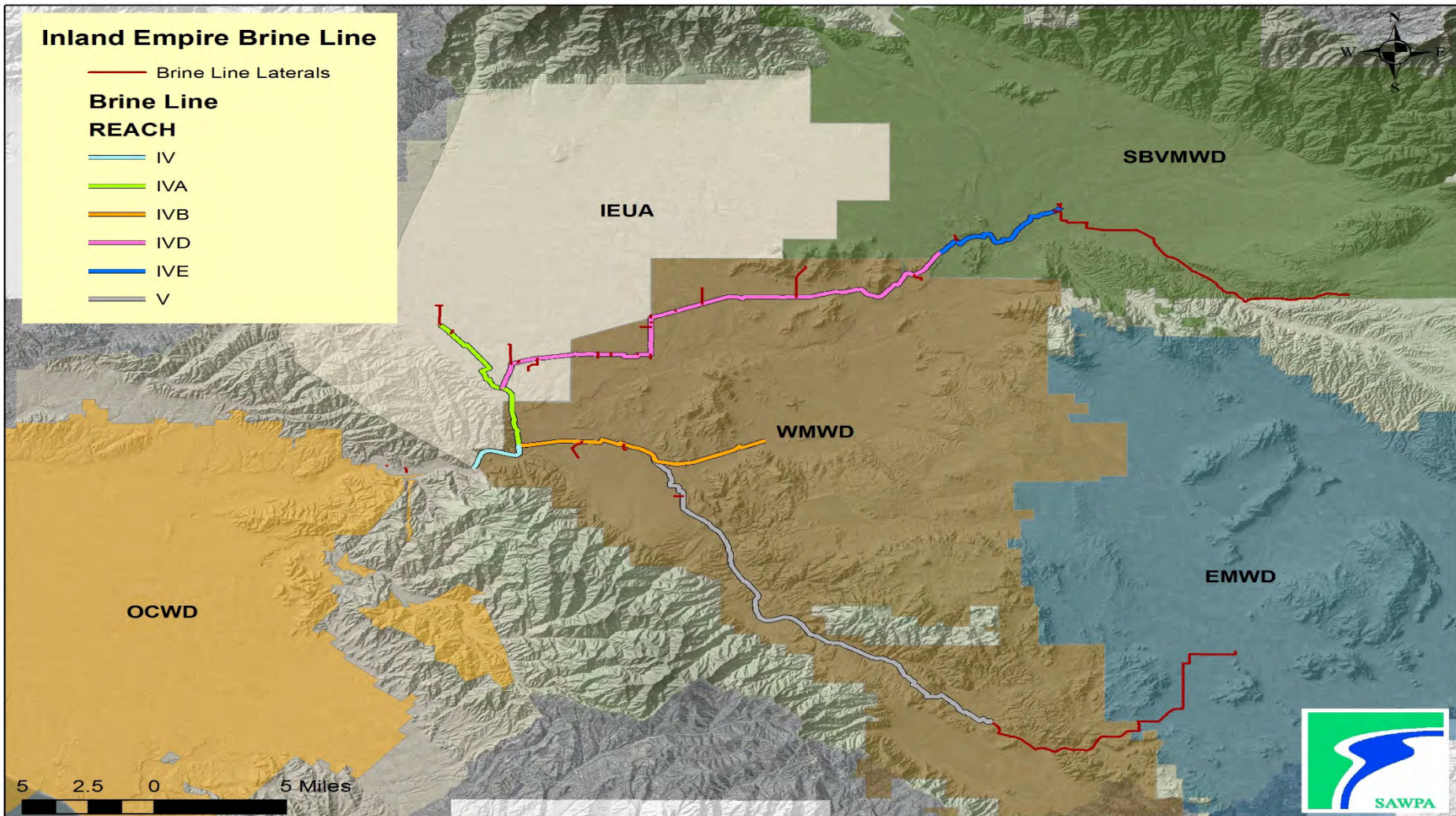
— IVA

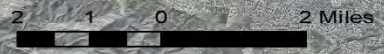
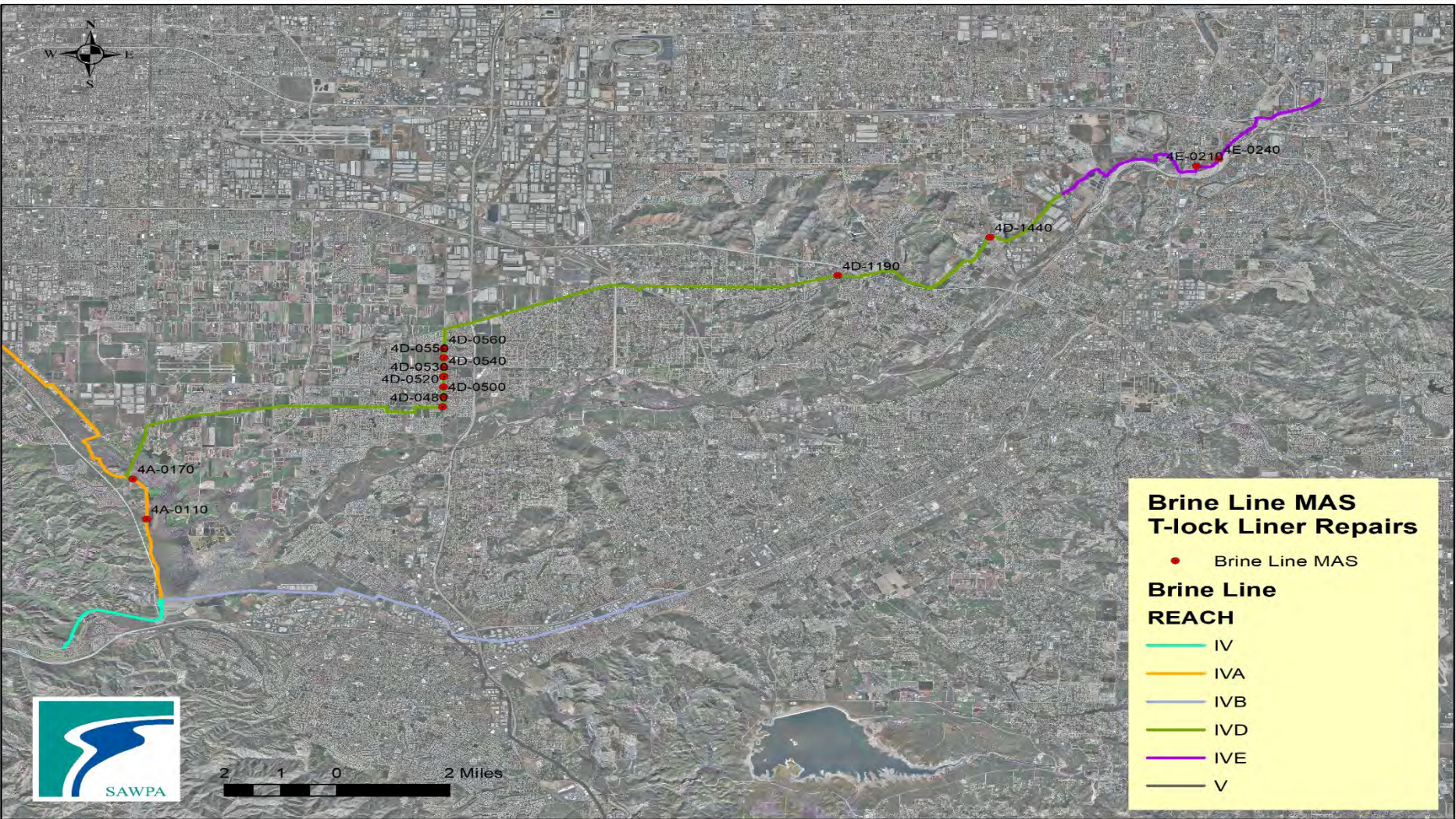
— IVB

— IVD

— IVE

— V





**Brine Line MAS
T-lock Liner Repairs**

- Brine Line MAS

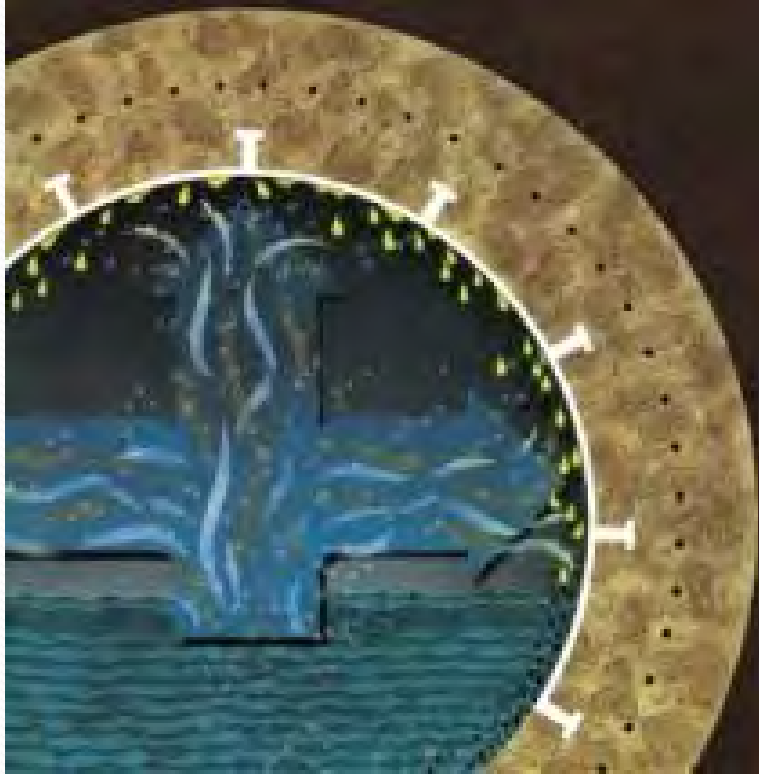
**Brine Line
REACH**

- IV
- IVA
- IVB
- IVD
- IVE
- V

T-LOCK LINED MANHOLES



PVC Liners (T-lock/Arrowlock)



4D-1190



4D-1190



06/15/2020 14:44

06/18/2020 15:23

4D-0520



Recommendation

- Receive and file



Questions??

Euclid Avenue (Reach IVA and Reach IVD) Maintenance Access Structure (MAS) Rehabilitation Project

David Ruhl, Engineering Manager

Project Agreement 24 Committee | August 4, 2020

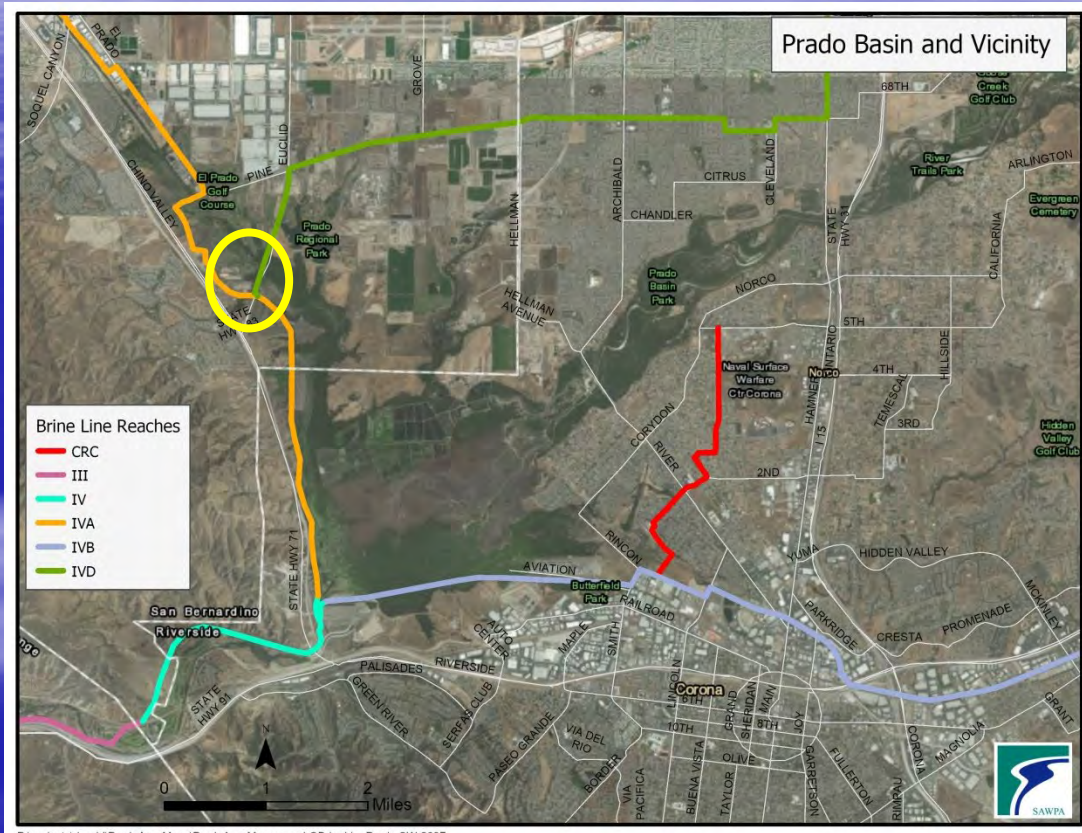
Item No. 5.C.

Euclid Avenue (Reach IVA and Reach IVD) MAS Rehabilitation Project

- Recommendation

- Authorize the GM to award a contract for public works construction to the lowest, responsive, responsible bidder, Abhe & Svoboda, for the Project, in an amount not to exceed \$481,000, and waive the 1 minor irregularity.

Project Location and Description



- Seal 5 MAS on Reach IVD to withstand pressurization
- Remove 1 MAS on Reach IVA due to concrete deterioration

Summary of Bids

| <u>Bidder</u> | <u>Total Bid</u> |
|-------------------------------------|------------------|
| Abhe & Svoboda, Inc | \$481,000 |
| Metro Builders & Engineers | \$552,602 |
| Weka, Inc. | \$593,201 |
| Lucas Builders, Inc. | \$663,600 |
| GRFCO, Inc. | \$755,000 |
| Norstar Plumbing & Engineering Inc. | \$813,000 |

Bid Analysis

- Qualified to perform work
- References Contacted
- 1 Minor Irregularity
 - No Corporate Seal, Certified Board Minutes Provided
- Abhe & Svoboda, Inc. submitted the lowest, responsible bid (award recommended)

Euclid Avenue (Reach IVA and Reach IVD) MAS Rehabilitation Project

- Recommendation

- Authorize the GM to award a contract for public works construction to the lowest, responsive, responsible bidder, Abhe & Svoboda, for the Project, in an amount not to exceed \$481,000, and waive the minor irregularity.

QUESTIONS?

Alcoa Dike – Lower Reach IVB and CRC Lateral Protection Project

David Ruhl, Engineering Manager

Project Agreement 24 Committee | August 4, 2020

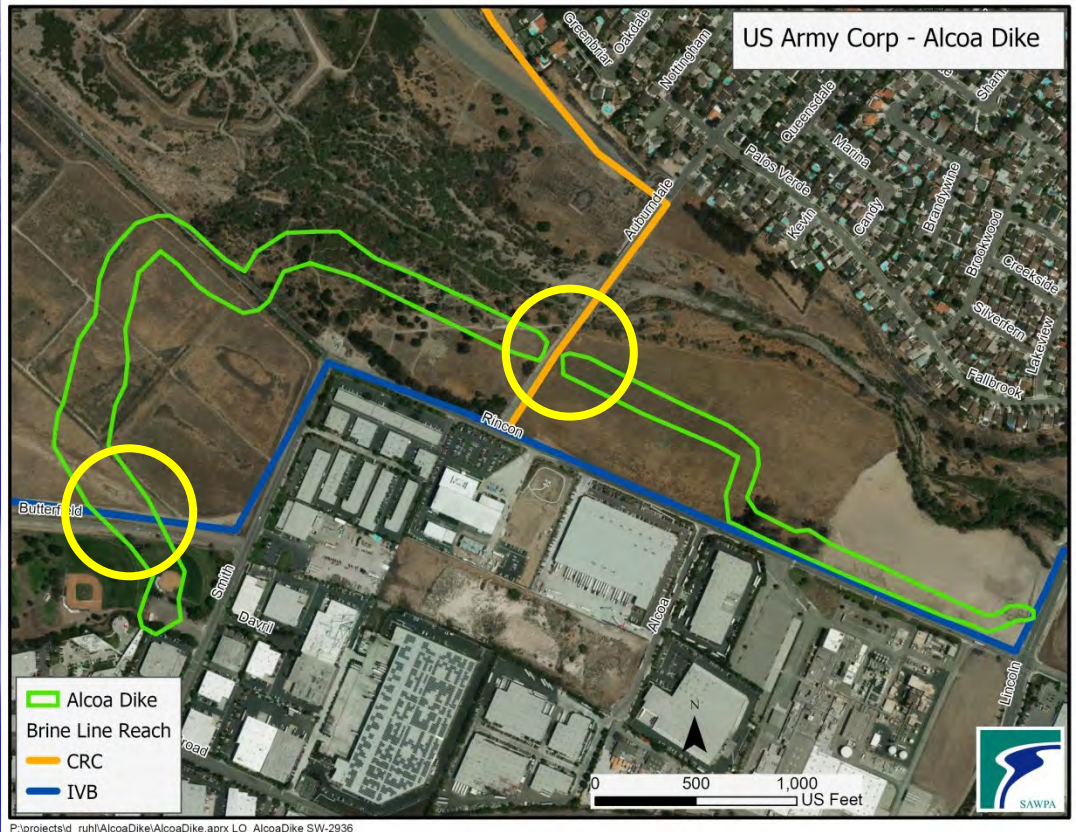
Item No. 5.D.

Lower Reach IVB and CRC Lateral Protection Project

- Recommendation

- Authorize the GM to award a contract for public works construction to the lowest, responsive, responsible bidder, Weka Inc., for the Project, in an amount not to exceed \$1,349,805, and waive the minor irregularities.

Alcoa Dike - Reach IVB/CRC Lateral



- Protect Reach 4B/CRC Lateral Due to Impacts of Alcoa Dike
- Remove and Replace about 440 feet of Reach IVB
- Remove and Replace about 160 feet of the CRC Lateral

Summary of Bids

Bidder

Total Bid

| | |
|----------------------|-------------|
| Weka, Inc | \$1,349,805 |
| Lucas Builders, Inc. | \$1,653,727 |
| T.E. Roberts | \$1,706,178 |

Bid Analysis

- Qualified to perform work
 - Previous work for SAWPA
- References Contacted
- 2 Minor Irregularities
 - Missing Superintendent Resume - provided
 - Minor Condition to Insurance
- Weka submitted the lowest, responsible bid (award recommended)

Lower Reach IVB and CRC Lateral Protection Project

- Recommendation

- Authorize the GM to award a contract for public works construction to the lowest, responsive, responsible bidder, Weka Inc., for the Lower Reach IV-B and CRC Lateral Utility Protection Project, in an amount not to exceed \$1,349,805, and waive the minor irregularities.

QUESTIONS?

Inland Empire Brine Line Rehabilitation/Protection Projects – Construction Management and Inspection Services

David Ruhl, Engineering Manager

Project Agreement 24 Committee | August 4, 2020

Item No. 5.E.

Construction Management (CM) and Inspection Services

- Recommendation

- Authorize the GM to execute a General Services Agreement and Task Order No. TRC320-01 in an amount not-to-exceed \$162,118 with TRC, to provide Construction Management and Inspection Services for the Inland Empire Brine Line Rehabilitation/Protection Projects.

CM and Inspection Services

- **Oversee Construction Activities**
- **Provide Inspection Services**
- **Ensure Project is installed per the plans and specifications**
- **TRC**
 - Knowledgeable on the brine line, specifications
 - Complex Project – HDPE Tee fused watertight MAS structures, 5 – 8 MGD by-pass system, 2- 10 feet dewatering, deep excavation
 - Similar by-pass technical specifications and HDPE Tees on previous SAWPA project
 - Efficient and cost effective use of staff
 - Utilize document management system familiar to SAWPA staff
- **Fee \$162,118 (includes 5% contingency)**

Construction Management (CM) and Inspection Services

- Recommendation

- Authorize the GM to execute a General Services Agreement and Task Order No. TRC320-01 in an amount not-to-exceed \$162,118 with TRC, to provide Construction Management and Inspection Services for the Inland Empire Brine Line Rehabilitation/Protection Projects.

QUESTIONS?