

Brine Line Statistics

Carlos Quintero, Operations Manager

PA24 Committee | March 3, 2020

Item No. 4.A.

Recommendation

- Receive and file

Inland Empire Brine Line

— Brine Line Laterals

Brine Line REACH

— IV

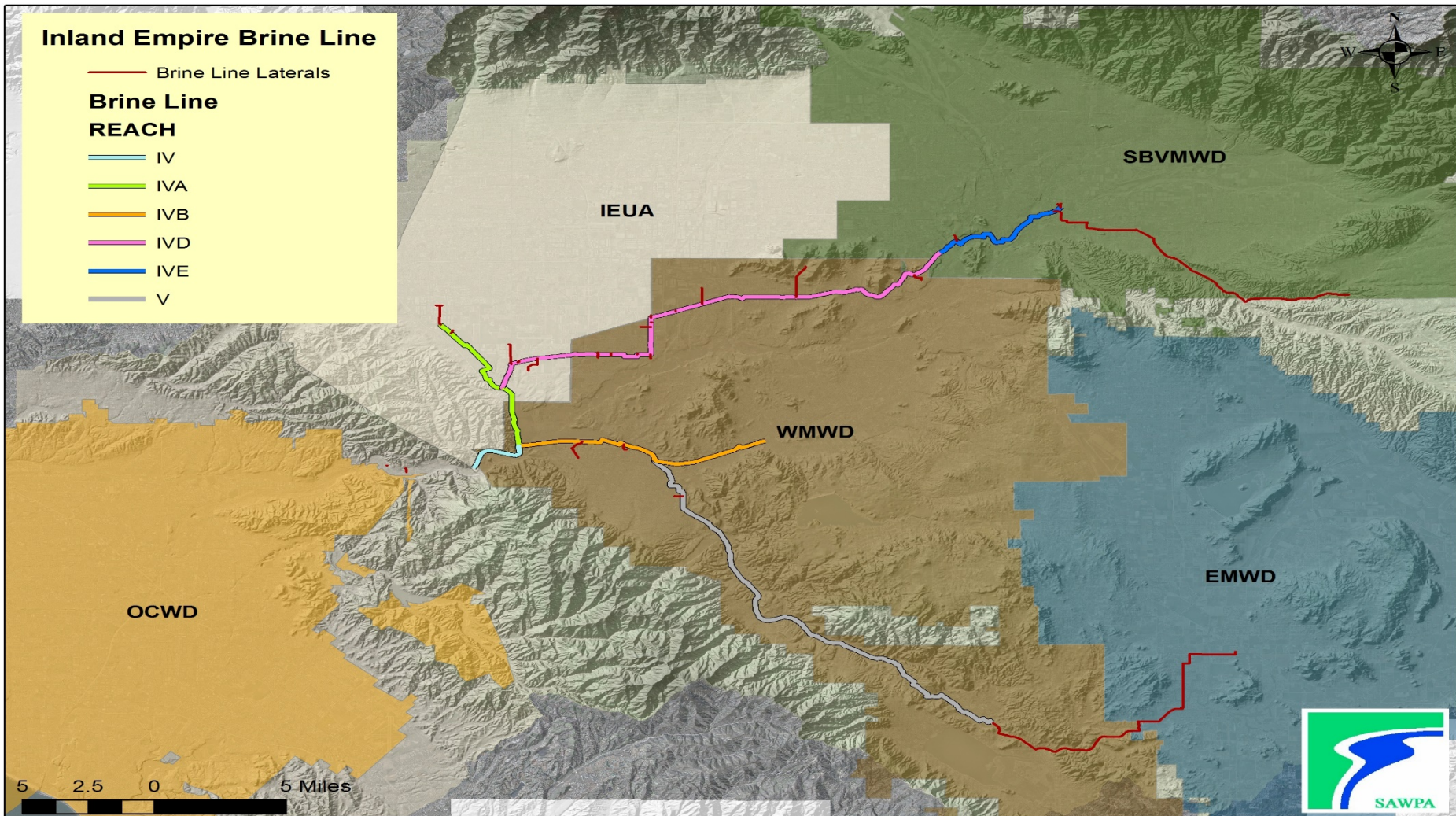
— IVA

— IVB

— IVD

— IVE

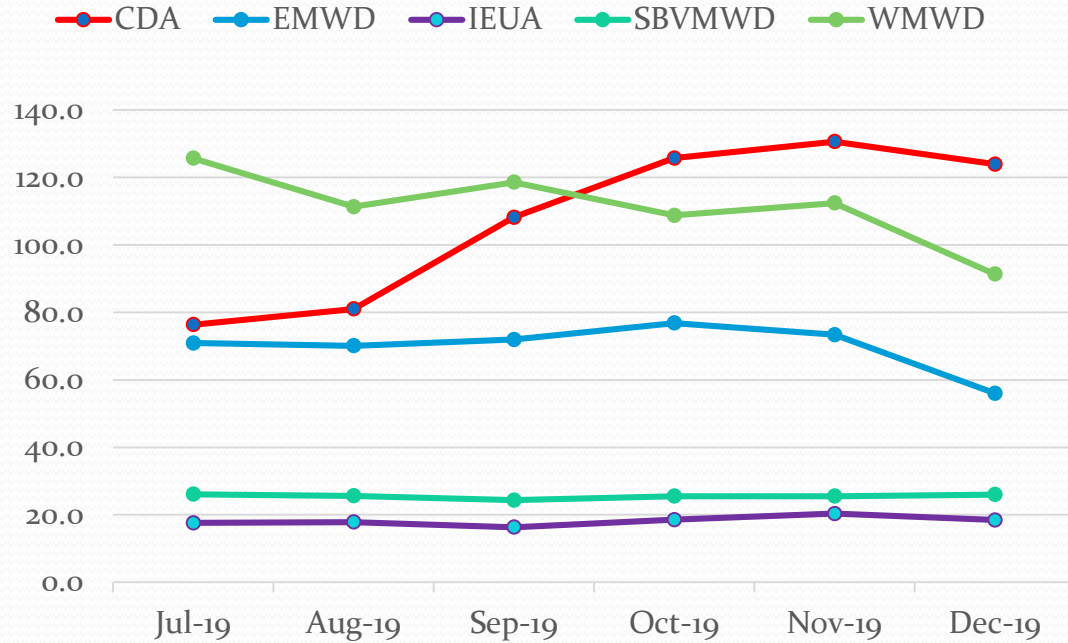
— V



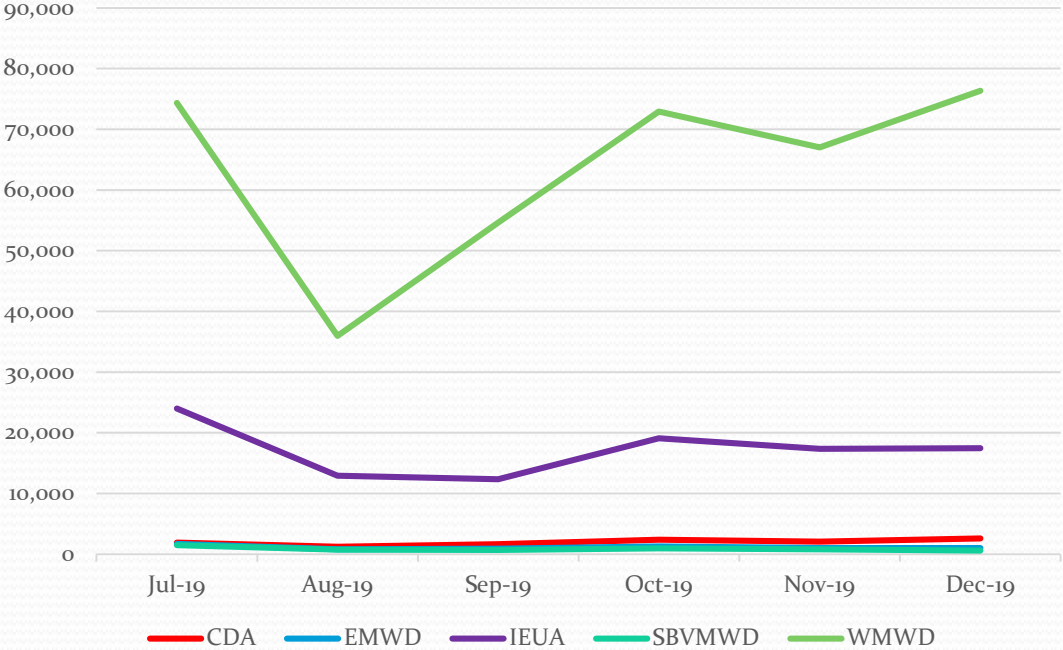
Brine Line Statistics – July-December 2019

Parameter	Quantity	Units
Flow	1,995	Million Gallons
Biochemical Oxygen Demand	254	Tons
	508,000	lbs
Total Suspended Solids	1,040	Tons
	2,080,000	lbs
Salt Removed (TDS)	48,750	Tons
	97,500,000	lbs
Direct Dischargers	26	Dischargers
Indirect Dischargers	17	Dischargers
Digalerts Tickets Received	1,970	Tickets
Sewer System Overflows	0	SSOs

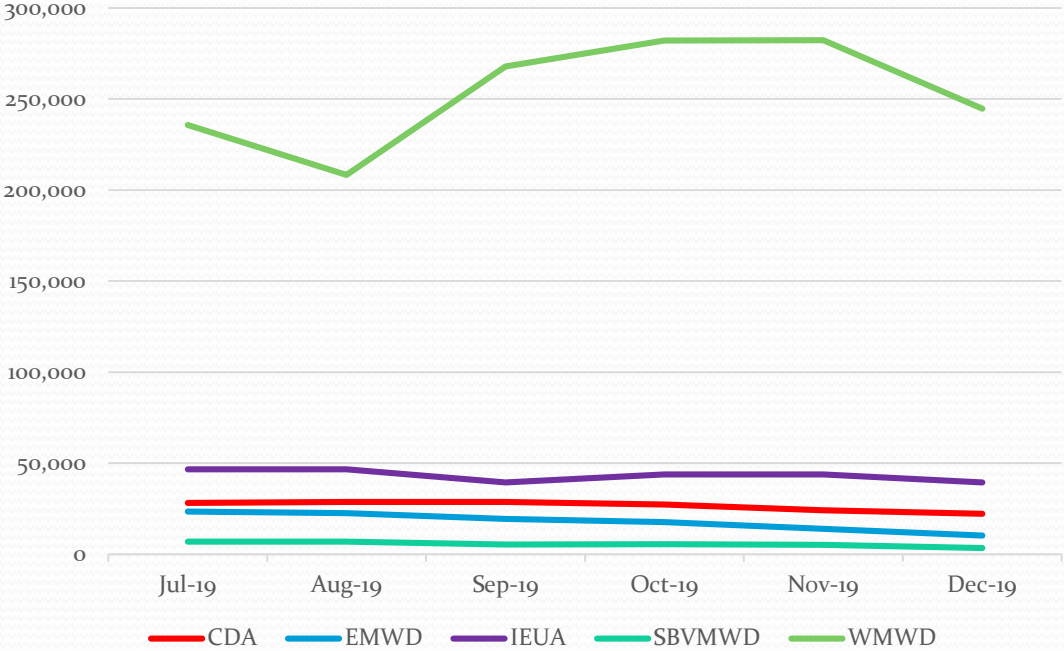
FLOW (MG)



BOD (lbs)



TSS (lbs)



Recommendation

- Receive and file



Questions??

Brine Line Activities

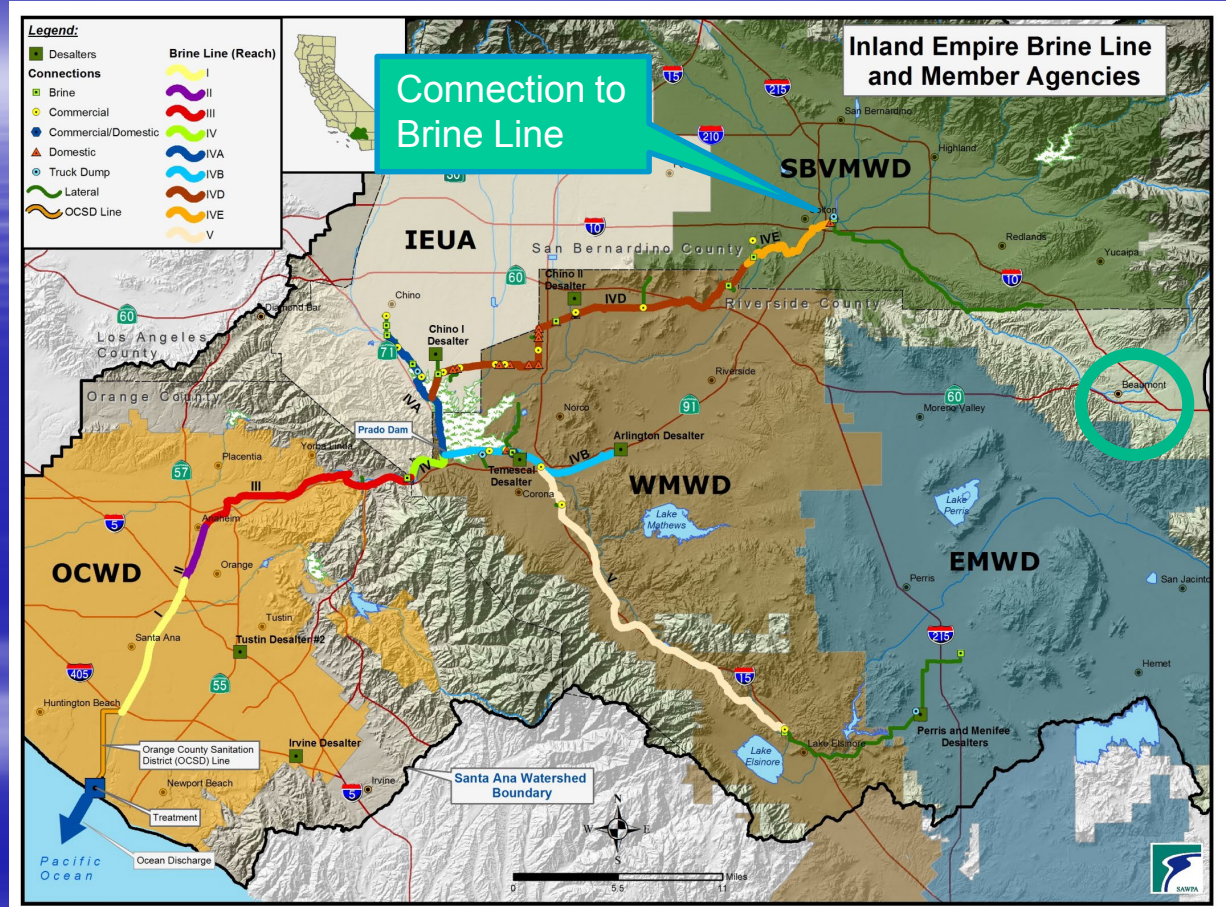
David Ruhl, Engineering Manager

Project Agreement 24 Committee | March 3, 2020

Item No. 4.B.

City of Beaumont Connection

- Beaumont is upgrading existing WWTP to comply with RWQCB order and basin plan objectives
- Upgrades include RO treatment of the tertiary treated wastewater plant effluent
- Upgrades must be in place by Sep 2020





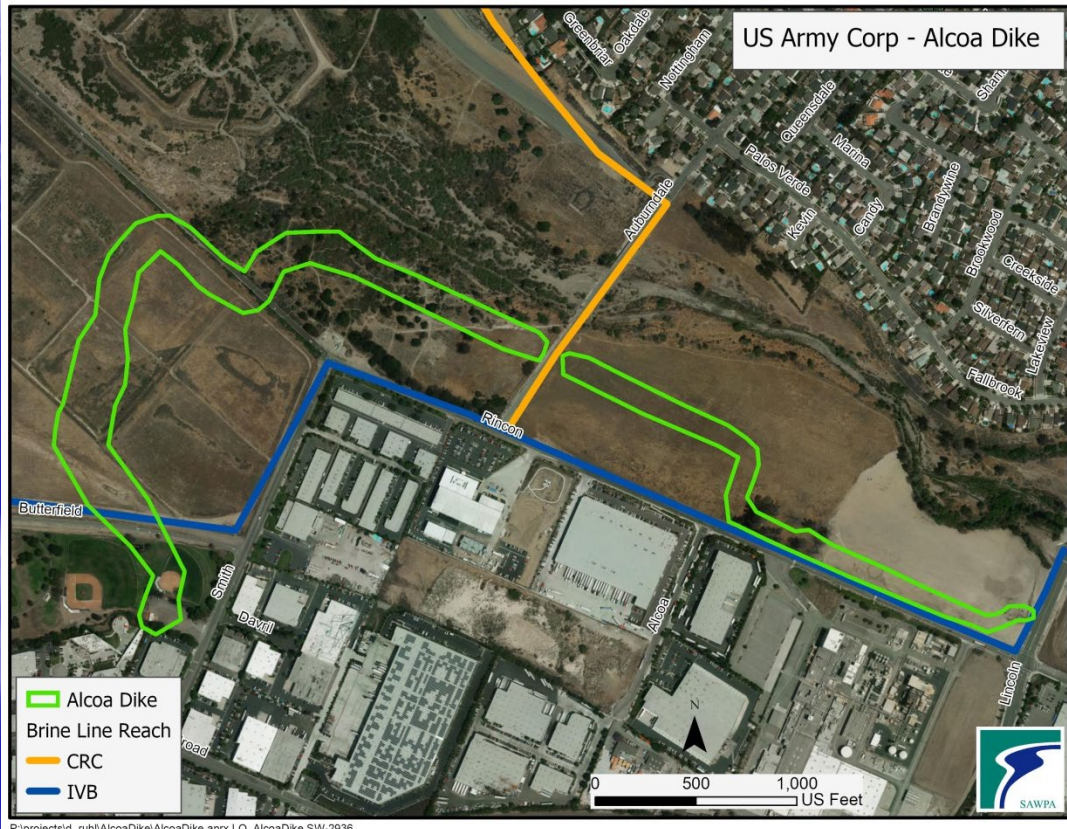
Pretreatment Program

Ordinance Update

- OCSD has completed the process of updating and revising their Sewer Use Ordinance.
- SAWPA is required to update their Ordinance to include the relevant OCSD revisions.

Task	Date
Submit 2 nd Draft to OCSD	February 28
OCSD Review Complete	April
Release Draft for Public Review	May
Workshop with Dischargers	June
Public Hearing / Adoption	July 7

Alcoa Dike - Reach IVB/CRC Lateral



F:\projects\d_ruhl\AlcoaDike\AlcoaDike.aprx LO AlcoaDike SW-2936

- Protect Reach 4B/CRC Lateral
- Hired Stantec to prepare plans and specifications
- Preliminary estimate of construction cost
 - \$1,000,000 Reach 4B / \$200,000 CRC Lateral
- Construction Aug 2020

Brine Line Activities

Business Plan / Marketing Plan

- Assure long-term future viability and sustainability
 - Maintenance, capital improvements, protection/relocation, rates, charges, capacity, reserves, pretreatment program
- Maximize the use of the Brine Line
 - Build off of past success, utilize existing planning information, develop marketing approach and marketing materials

Joint Operations Committee and Joint Policy Committee

- JOC meeting is schedule for March 5, 2020
- JPC meeting May/June Timeframe



Potential New Customers

Customer	Discharge Volume Gallons Per Day	Anticipated Discharge Date
SCE Mira Loma Peaker Plant	10,000 – 20,000	Spring 2020
Beaumont Wastewater Treatment Plant	200,000 – 550,000	Mid 2020
Anaergia (Rialto)	250,000	Late 2020
Chino Industrial Discharger	100,000 – 300,000	Late 2020

QUESTIONS?