



S A W P A

SANTA ANA WATERSHED PROJECT AUTHORITY

11615 Sterling Avenue, Riverside, California 92503 • (951) 354-4220

SPECIAL NOTICE REGARDING CORONAVIRUS DISEASE 2019 (COVID-19) AND PARTICIPATION IN PUBLIC MEETINGS

On March 4, 2020, Governor Newsom declared a State of Emergency resulting from the threat of COVID-19. Governor Newsom issued Executive Order N-25-20 (3-12-20) and Executive Order N-29-20 (3-17-20) which temporarily suspend portions of the Brown Act relative to conducting of public meetings. Subsequent thereto, Governor Newsom issued Executive Order N-33-20 (3-19-20) ordering all individuals to stay at home or at their place of residence. Accordingly, it has been determined that all Board and Committee meetings of the Santa Ana Watershed Project Authority held pursuant to the Brown Act will be conducted virtually, including meetings of the:

- SAWPA Commission
- PA 22, PA 23, and PA 24 Committees
- OWOW Steering Committee

REGULAR MEETING OF THE PROJECT AGREEMENT 24 COMMITTEE TUESDAY, AUGUST 4, 2020 – 10:00 A.M.

(or immediately following the 9:00 a.m. PA 23 Committee meeting, whichever is earlier)

PUBLIC PARTICIPATION

Public participation is welcome and encouraged. You may participate in the August 4, 2020 meeting of the SAWPA Project Agreement 24 Committee by telephone* and virtually through the Zoom app as follows:

Meeting Access Via Computer (Zoom):	Meeting Access Via Telephone*:
<ul style="list-style-type: none"> • https://sawpa.zoom.us/j/97523943745 	<ul style="list-style-type: none"> • 1 (669) 900-6833
<ul style="list-style-type: none"> • Meeting ID: 975 2394 3745 	<ul style="list-style-type: none"> • Meeting ID: 975 2394 3745

If you are unable to participate by telephone* or virtually, you may also submit your comments and questions in writing for the Committee’s consideration by sending them to publiccomment@sawpa.org with the subject line “Public Comment Item #” (insert the agenda item number relevant to your comment) or “Public Comment Non-Agenda Item”. Submit your written comments by 6:00 p.m. on Monday, August 3, 2020. All public comments will be provided to the Chair and may be read into the record or compiled as part of the record.

***IMPORTANT PRIVACY NOTE: Participation in the meeting via the Zoom app is strongly encouraged.** Please keep in mind: (1) This is a public meeting; as such, the virtual meeting information is published on the World Wide Web and available to everyone. (2) Should you participate remotely via telephone, your telephone number will be your “identifier” during the meeting and available to all meeting participants. Participation in the meeting via the Zoom app is strongly encouraged; there is no way to protect your privacy if you elect to call in to the meeting. The Zoom app is a free download.

Page Intentionally Blank



S A W P A

SANTA ANA WATERSHED PROJECT AUTHORITY

11615 Sterling Avenue, Riverside, California 92503 • (951) 354-4220

PURSUANT TO THE PROVISIONS OF EXECUTIVE ORDER N-25-20 ISSUED BY GOVERNOR GAVIN NEWSOM ON MARCH 12, 2020, AND EXECUTIVE ORDER N-29-20 ISSUED BY GOVERNOR GAVIN NEWSOM ON MARCH 17, 2020, ANY COMMITTEE MEMBER MAY CALL INTO THE COMMITTEE MEETING WITHOUT OTHERWISE COMPLYING WITH THE BROWN ACT'S TELECONFERENCING REQUIREMENTS.

VIRTUAL ACCESSIBILITY FOR THE GENERAL PUBLIC:

Due to the spread of COVID-19, and until further notice, the Santa Ana Watershed Project Authority will be holding all upcoming Board and Committee meetings by teleconferencing and virtually through Zoom.

This meeting will be accessible as follows:

Meeting Access Via Computer (Zoom)*:	Meeting Access Via Telephone*:
<ul style="list-style-type: none"> • https://sawpa.zoom.us/j/97523943745 • Meeting ID: 975 2394 3745 	<ul style="list-style-type: none"> • 1 (669) 900-6833 • Meeting ID: 975 2394 3745
<p>*Participation in the meeting via the Zoom app (a free download) is strongly encouraged; there is no way to protect your privacy if you elect to call in by phone to the meeting.</p>	

All votes taken during this meeting will be conducted by oral roll call.

AGENDA

TUESDAY, AUGUST 4, 2020 – 10:00 A.M.

(*or immediately following the 9:00 a.m. PA 23 Committee meeting, whichever is earlier)

REGULAR MEETING OF THE PROJECT AGREEMENT 24 COMMITTEE

Inland Empire Brine Line

Committee Members

Eastern Municipal Water District	Inland Empire Utilities Agency
Paul D. Jones, General Manager	Director Kati Parker
Director David J. Slawson (Alt)	Director Michael Camacho (Alt)
San Bernardino Valley Municipal Water District	Western Municipal Water District
Director T. Milford Harrison, Chair	Director Brenda Dennstedt, Vice Chair
	Craig Miller, General Manager (Alt)

1. CALL TO ORDER | PLEDGE OF ALLEGIANCE (T. Milford Harrison, Chair)

2. PUBLIC COMMENTS

Members of the public may address the Committee on items within the jurisdiction of the Committee; however, no action may be taken on an item not appearing on the agenda unless the action is otherwise authorized by Government Code §54954.2(b).

3. ITEMS TO BE ADDED OR DELETED

Pursuant to Government Code §54954.2(b), items may be added on which there is a need to take immediate action and the need for action came to the attention of the Santa Ana Watershed Project Authority subsequent to the posting of the agenda.

4. APPROVAL OF MEETING MINUTES: July 7, 2020..... 7

Recommendation: Approve as posted.

5. COMMITTEE DISCUSSION/ACTION ITEMS

A. INLAND EMPIRE BRINE LINE FY19-20 FLOW SUMMARY (PA24#2020.15)..... 11

Presenter: Carlos Quintero

Recommendation: Receive and file.

B. MAINTENANCE ACCESS STRUCTURE PVC LINER REPAIRS 31

Presenter: Carlos Quintero

Recommendation: Receive and file.

C. EUCLID AVENUE (REACH IV-A AND IV-D) MAINTENANCE ACCESS STRUCTURE REHABILITATION PROJECT (PA24#2020.16) 43

Presenter: David Ruhl

Recommendation: Authorize the General Manager to award a contract for public works construction to the lowest, responsive, responsible bidder, Abhe & Svoboda, Inc, for the Euclid Avenue (Reach IV-A and IV-D) Maintenance Access Structure Rehabilitation Project, in an amount not to exceed \$481,000, and waive the minor irregularities.

D. ALCOA DIKE – LOWER REACH IV-B AND CRC LATERAL UTILITY PROTECTION PROJECT (PA24#2020.17) 53

Presenter: David Ruhl

Recommendation: Authorize the General Manager to award a contract for public works construction to the lowest, responsive, responsible bidder, Weka Inc., for the Lower Reach IV-B and CRC Lateral Utility Protection Project, in an amount not to exceed \$1,349,805, and waive the minor irregularities.

E. INLAND EMPIRE BRINE LINE REHABILITATION/PROTECTION PROJECTS CONSTRUCTION MANAGEMENT AND INSPECTION SERVICES (PA24#2020.18) 63

Presenter: David Ruhl

Recommendation: Authorize the General Manager to execute a General Services Agreement and Task Order No. TRC320- 01 in an amount not-to-exceed \$162,118 with TRC, to provide Construction Management and Inspection Services for the Inland Empire Brine Line Rehabilitation/Protection Projects.

6. INFORMATIONAL REPORTS

Recommendation: Receive for information.

- A. **BRINE LINE FINANCIAL REPORT – MAY 2020** 71
 Presenter: Karen Williams

7. REQUEST FOR FUTURE AGENDA ITEMS

8. CLOSED SESSION

There were no Closed Session items anticipated at the time of the posting of this agenda.

9. ADJOURNMENT

PLEASE NOTE:

In compliance with the Americans with Disabilities Act, if you need special assistance to participate in this meeting, please contact the Clerk of the Board at (951) 354-4220. Notification at least 48 hours prior to the meeting will enable staff to make reasonable arrangements to ensure accessibility to this meeting.

Materials related to an item on this agenda submitted to the Committee after distribution of the agenda packet are available for public inspection during normal business hours at the SAWPA office, 11615 Sterling Avenue, Riverside, and available at www.sawpa.org, subject to staff’s ability to post documents prior to the meeting.

Declaration of Posting

I, Kelly Berry, Clerk of the Board of the Santa Ana Watershed Project Authority declare that on July 29, 2020, a copy of this agenda has been uploaded to the SAWPA website at www.sawpa.org and posted at SAWPA’s office, 11615 Sterling Avenue, Riverside, California.

/s/

 Kelly Berry, CMC

2020 Project Agreement 24 Committee Regular Meetings

First Tuesday of Every Month

(Note: All meetings begin at 10:00 a.m., or immediately following the 9:30 a.m. SAWPA Commission meeting, whichever is earlier, unless otherwise noticed, and are held at SAWPA.)

January 1/7/20 Regular Committee Meeting	February 2/4/20 Regular Committee Meeting [cancelled]
March 3/3/20 Regular Committee Meeting	April 4/7/20 Regular Committee Meeting
May 5/5/20 Regular Committee Meeting	June 6/2/20 Regular Committee Meeting*
July 7/7/20 Regular Committee Meeting	August 8/4/20 Regular Committee Meeting
September 9/1/20 Regular Committee Meeting	October 10/6/20 Regular Committee Meeting
November 11/3/20 Regular Committee Meeting	December 12/1/20 Regular Committee Meeting

Page Intentionally Blank



PROJECT AGREEMENT 24 COMMITTEE
Inland Empire Brine Line
REGULAR MEETING MINUTES
July 7, 2020

COMMITTEE MEMBERS PRESENT

T. Milford Harrison, Chair, San Bernardino Valley Municipal Water District Governing Board
Brenda Dennstedt, Vice Chair, Western Municipal Water District Governing Board
Kati Parker, Inland Empire Utilities Agency Governing Board
Paul D. Jones, Eastern Municipal Water District General Manager

ALTERNATE COMMITTEE MEMBERS PRESENT [Non-Voting]

None

COMMITTEE MEMBERS ABSENT

None

STAFF PRESENT

Rich Haller, Karen Williams, David Ruhl, Dean Unger, Kelly Berry

OTHERS PRESENT

Andrew D. Turner, Lagerlof, LLP

1. CALL TO ORDER | PLEDGE OF ALLEGIANCE

The regular meeting of the PA 24 Committee was called to order at 11:16 a.m. by Chair Harrison on behalf of the Santa Ana Watershed Project Authority, 11615 Sterling Avenue, Riverside, California. The record will reflect this meeting was conducted virtually.

Pursuant to the provisions of Executive Order N-25-30 issued by Governor Gavin Newsom on March 12, 2020, and Executive Order N-29-20 issued by Governor Gavin Newsom on March 17, 2020, any Committee member may call into the Committee meeting without otherwise complying with the Brown Act's teleconferencing requirements.

Executive Order N-33-20 issued by Governor Gavin Newsom on March 19, 2020, ordered all individuals to stay at home or at their place of residence. In concert with state and local efforts to prevent the spread of COVID-19, and until further notice, the Santa Ana Watershed Project Authority will be holding all Board and Committee meetings by teleconference and virtually through the Zoom app.

As set forth on the posted meeting agenda, this Committee meeting was accessible to the public by teleconference and through Zoom. Members of the public who were unable to participate by teleconference or virtually were invited to submit comments and questions in writing via email for the Committee's consideration. All votes taken during this meeting were conducted via oral roll call.

2. PUBLIC COMMENTS

There were no public comments; there were no public comments received via email.

3. ITEMS TO BE ADDED OR DELETED

There were no added or deleted items.

4. APPROVAL OF MEETING MINUTES: June 2, 2020

Chair Harrison called for a motion to approve the June 2, 2020 meeting minutes as posted.

MOVED, approve the June 2, 2020 meeting minutes.

Result:	Adopted by Roll Call Vote (Unanimously)
Motion/Second:	Jones/Dennstedt
Ayes	Dennstedt, Harrison, Jones, Parker
Nays:	None
Abstentions:	None
Absent:	None

5. COMMITTEE DISCUSSION/ACTION ITEMS

A. INLAND EMPIRE BRINE LINE DISCHARGER LEASE AGREEMENT (PA24#2020.14)

David Ruhl provided a PowerPoint presentation contained in the agenda packet on pages 14 – 22. Andrew S. Dale, P.E., Anaergia Services, LLC, and Mike Gannuscio, Facilities Manager for the Rialto Bioenergy facility, were present during the meeting and available for questions. Andrew Dale noted SAWPA staff was very communicative throughout the process relative to the requirements needed to bring us to this point and thanked David Ruhl for his efforts.

Committee Member Jones asked about the discharge monitoring plan for the site. Ruhl advised they will be monitoring at the point of connection as set forth in their permit which is inclusive of all OCSD's local limits.

MOVED, approve and authorize the General Manager to execute a Discharger Lease Agreement with Rialto Bioenergy Facility (RBF) to lease 0.25 million gallons per day (MGD) of brine line treatment and disposal capacity right at a wastewater strength of 100 mg/l Biological Oxygen Demand (BOD) and 100 mg/l Total Suspended Solids (TSS) from the Lease Capacity Pool for a period of five (5) years, subject to minor, non-substantive changes contingent on concurrence by legal counsel.

Result:	Adopted by Roll Call Vote (Unanimously)
Motion/Second:	Jones/Dennstedt
Ayes	Dennstedt, Harrison, Jones, Parker
Nays:	None
Abstentions:	None
Absent:	None

6. INFORMATIONAL REPORTS

Recommendation: Receive and file the following oral/written reports/updates.

A. BRINE LINE FINANCIAL REPORT – APRIL 2020

7. **REQUEST FOR FUTURE AGENDA ITEMS**

There were no requests for future agenda items.

8. **CLOSED SESSION**

There was no closed session.

9. **ADJOURNMENT**

There being no further business for review, Chair Harrison adjourned the meeting at 11:30 a.m.

Approved at a Regular Meeting of the Project Agreement 24 Committee on August 4, 2020.

T. Milford Harrison, Chair

Attest:

Kelly Berry, CMC
Clerk of the Board

Page Intentionally Blank

PA 24 COMMITTEE MEMORANDUM NO. 2020.15

DATE: August 4, 2020
TO: Project Agreement 24 Committee
(Inland Empire Brine Line)
SUBJECT: Inland Empire Brine Line FY19-20 Flow Summary
PREPARED BY: Carlos Quintero, Operations Manager

RECOMMENDATION
Receive and file

DISCUSSION

A summary of the Inland Empire Brine Line flows, by month and category (total flows at S-01, desalters/ion exchange/reclaimed wastewater, industrial, power plants, collection stations, and domestic), are presented below. These charts are based on the data presented in Attachment 1.

Figure 1. Total Volume by Month (Million Gallons) at S-01/County Line

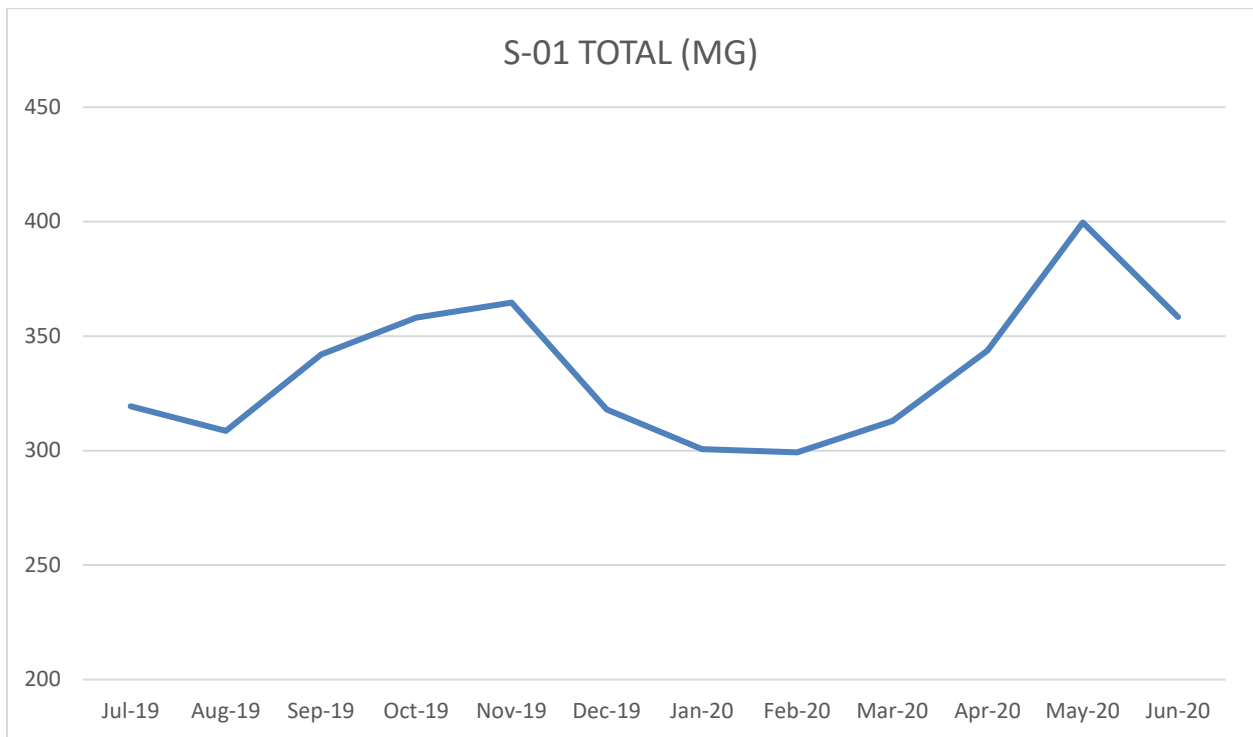


Figure 2. Total Volume by Month (Million Gallons) discharged by Desalters/Ion Exchange/Reclaimed Wastewater Facilities

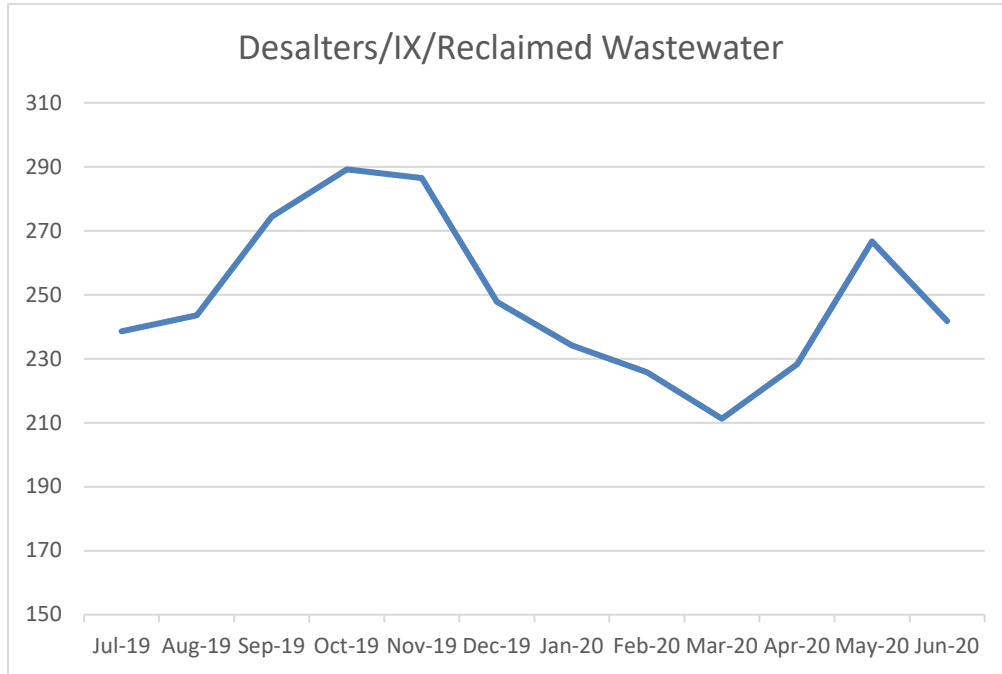


Figure 3. Total Volume by Month (Million Gallons) discharged by Industrial Users

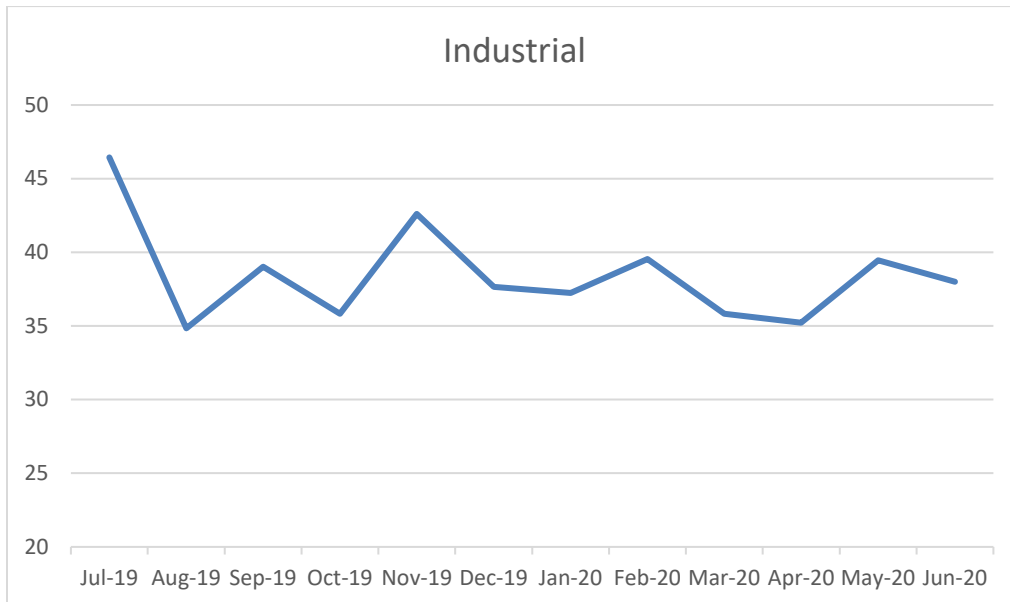


Figure 4. Total Volume by Month (Million Gallons) discharged by Power Plants

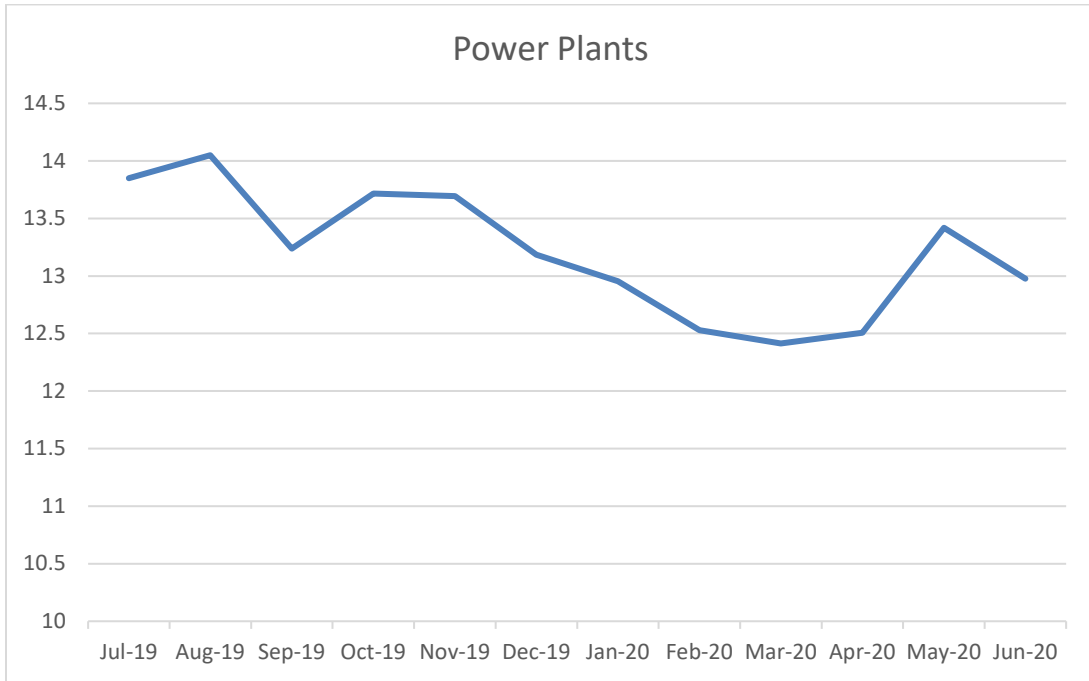


Figure 5. Total Volume by Month (Million Gallons) discharged by Domestic Dischargers

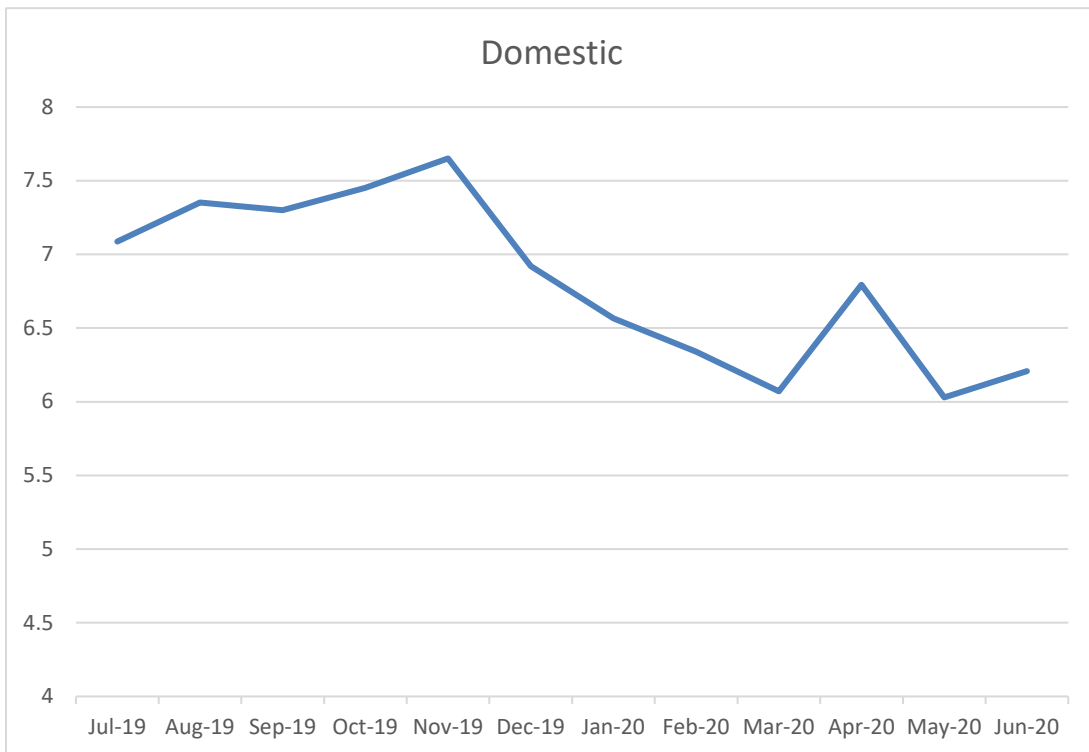


Figure 6. Total Volume by Month (Million Gallons) discharged at the Collection Stations

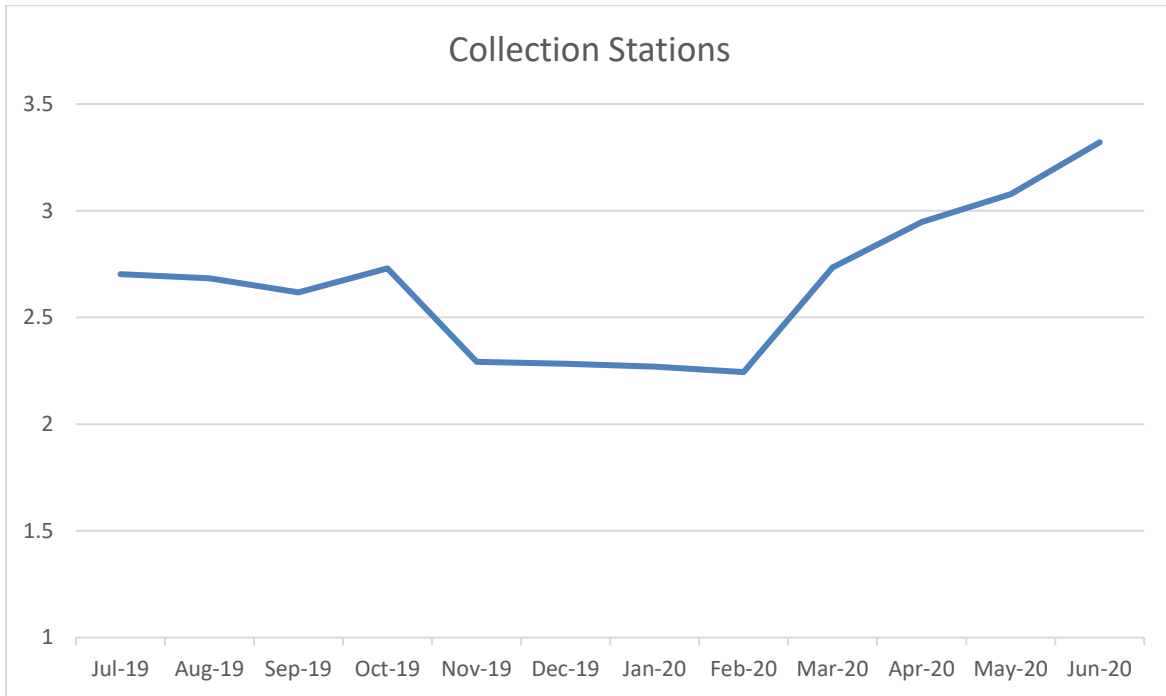
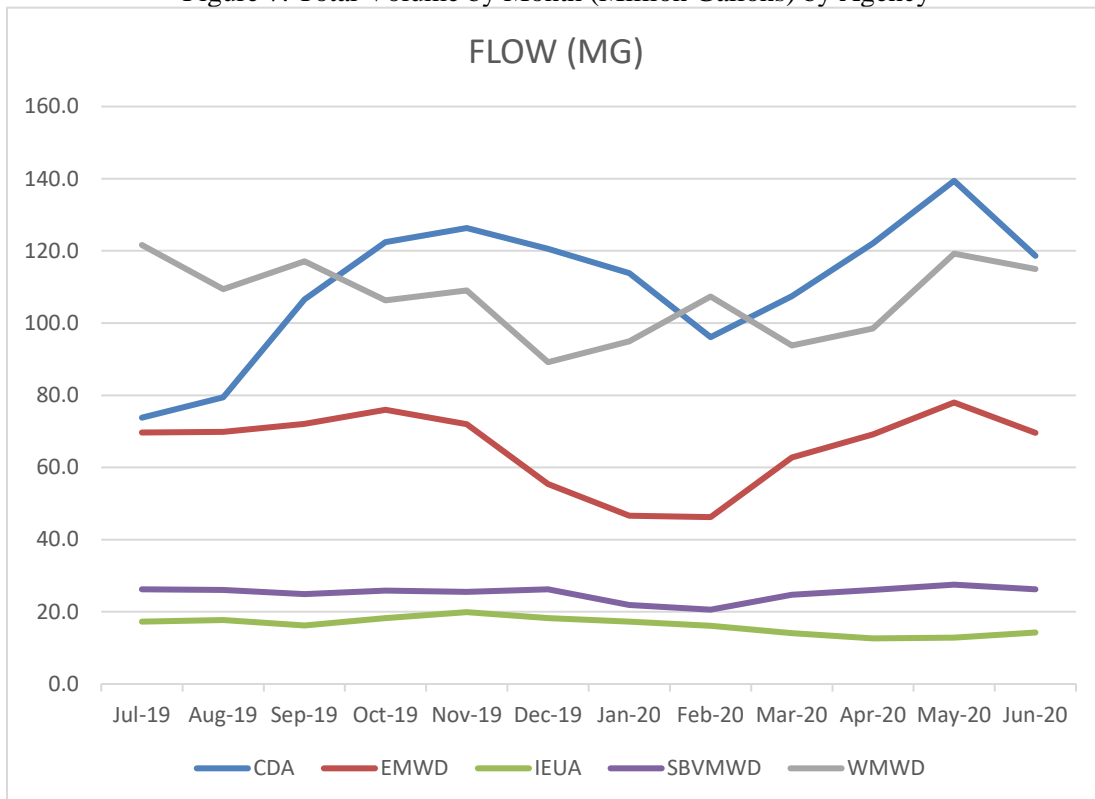


Figure 7. Total Volume by Month (Million Gallons) by Agency



There was a noticeable reduction in industrial and power plant flows during the months of March and April, likely related to COVID-19. However, overall flows in the Brine Line increased due to additional flows discharged by groundwater desalters and ion exchange plans.

CRITICAL SUCCESS FACTORS

2. Ensure that Brine Line value and benefits are known to economic development agencies and others.

RESOURCE IMPACTS

N/A

Attachments:

1. Power Point Presentation
2. Brine Line Flows for FY19-20

Brine Line Flows FY19-20

Carlos Quintero, Operations Manager

PA24 Committee | August 4, 2020

Item No. 5.A.

Recommendation

- Receive and file

Inland Empire Brine Line

— Brine Line Laterals

Brine Line REACH

— IV

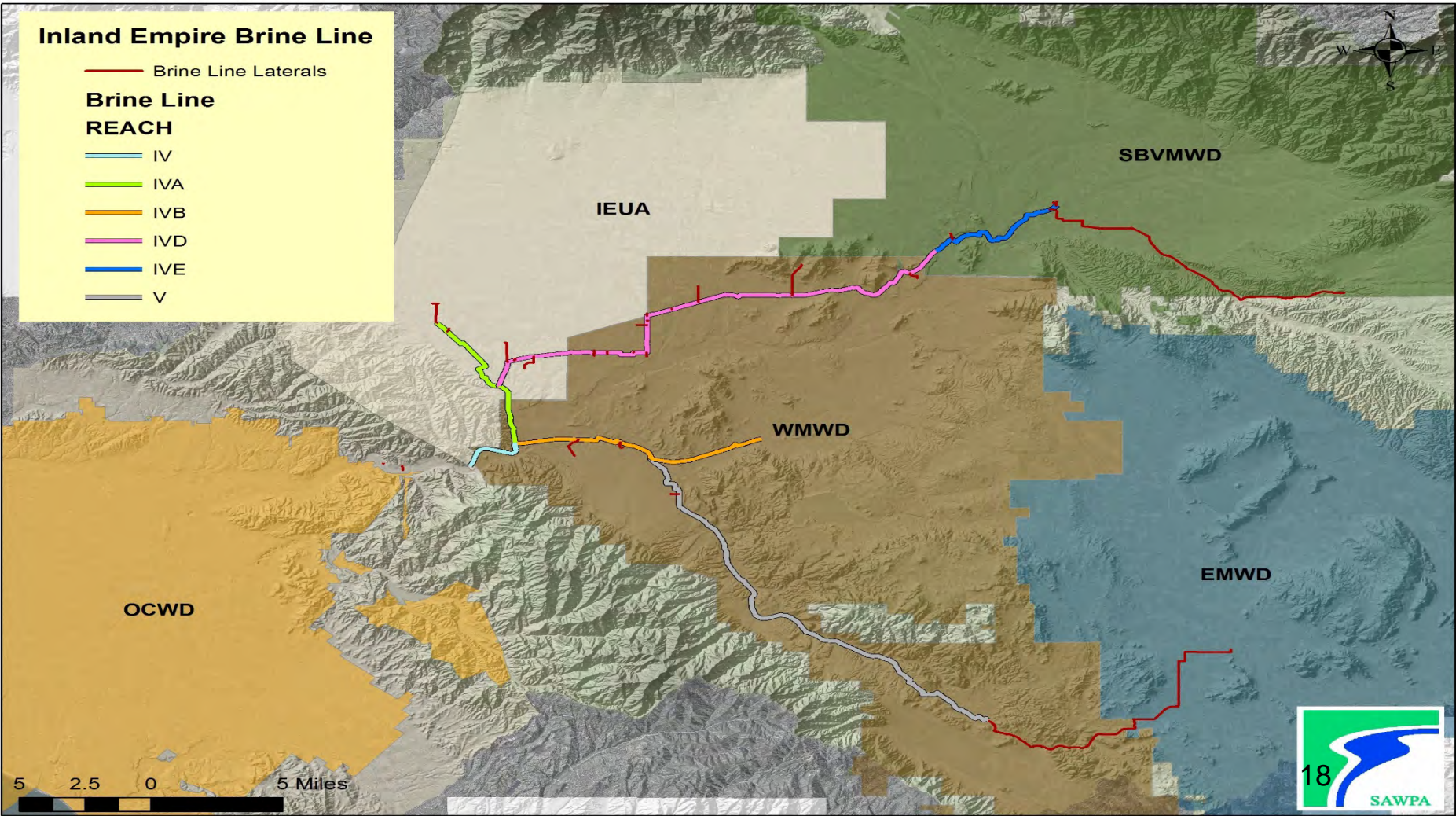
— IVA

— IVB

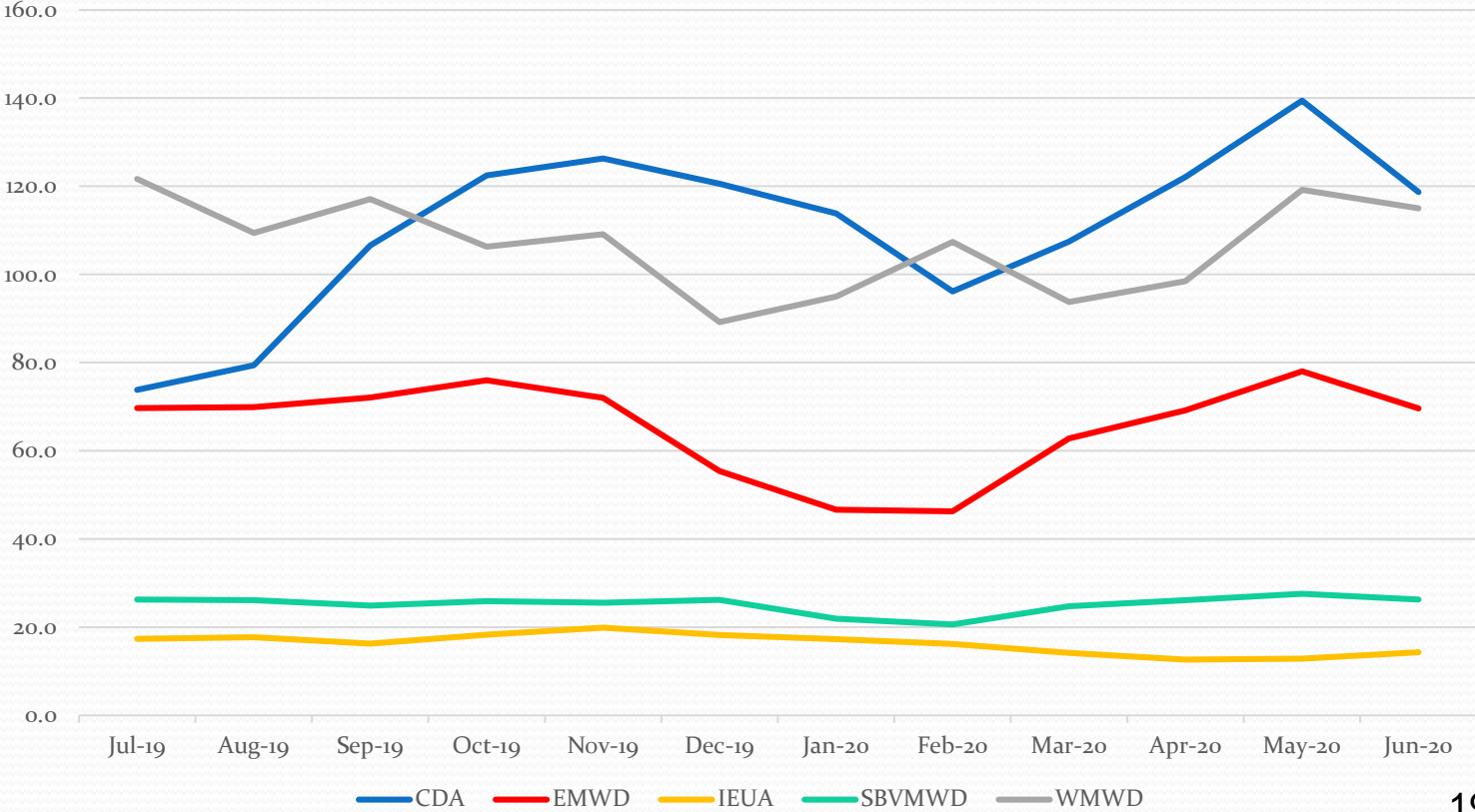
— IVD

— IVE

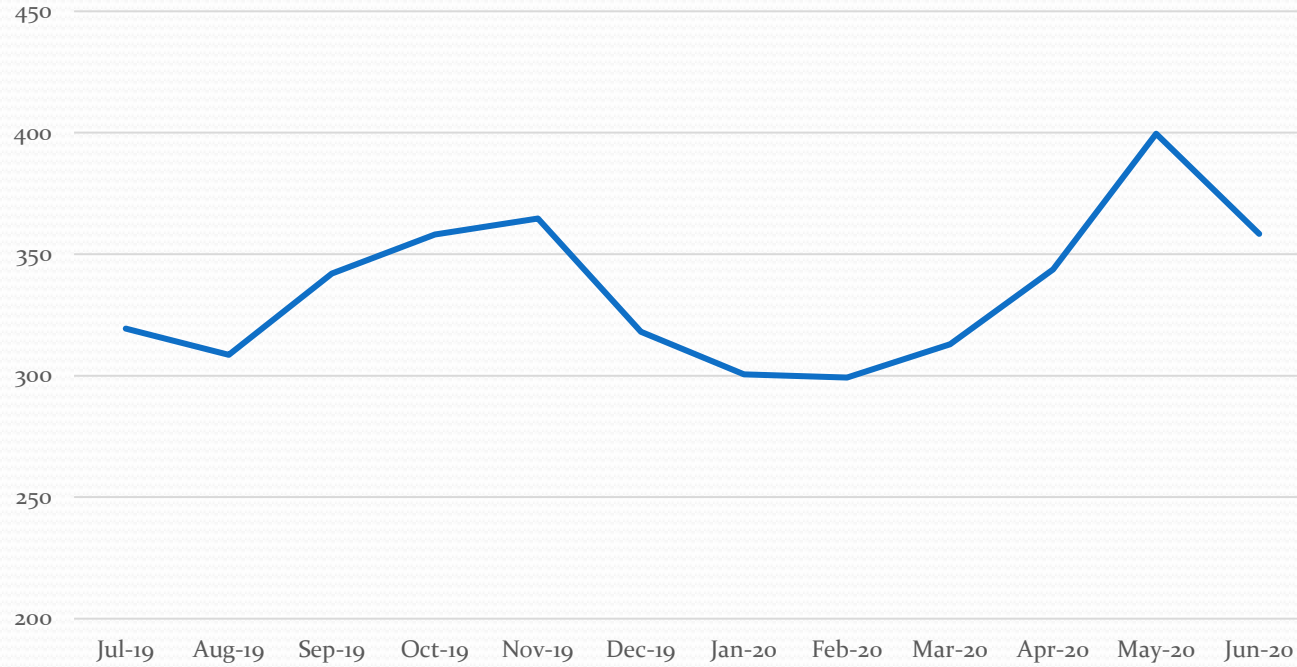
— V



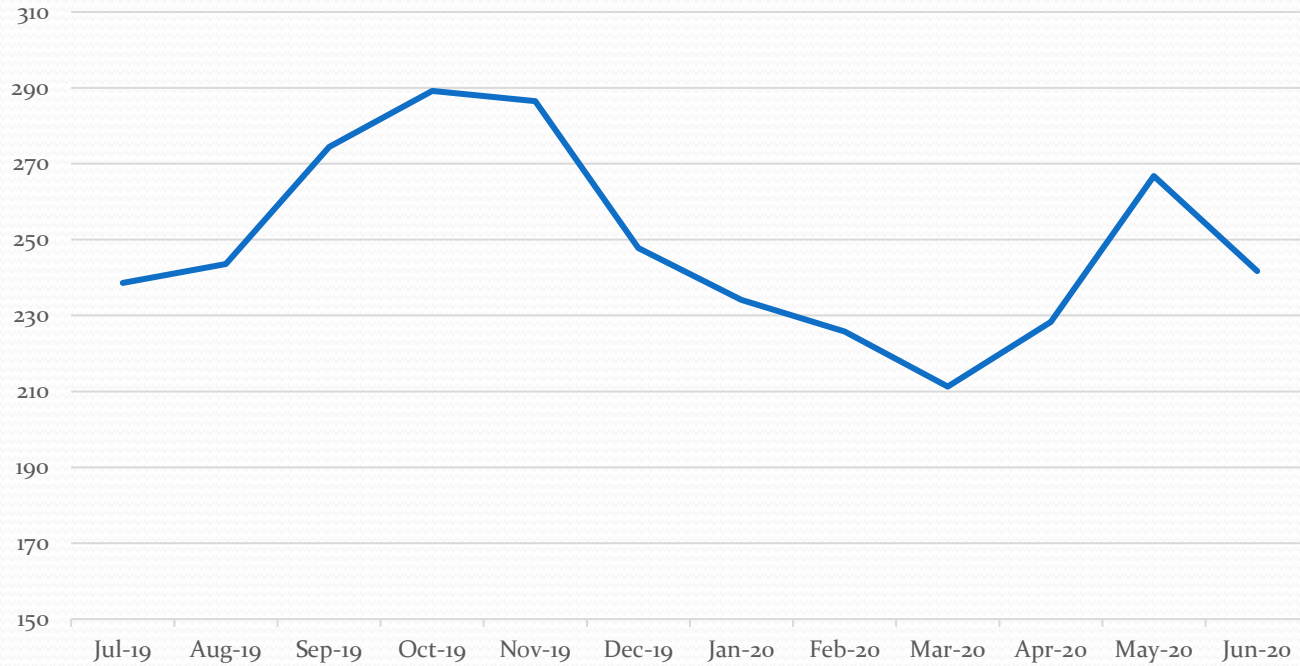
FLOW BY AGENCY (MG)



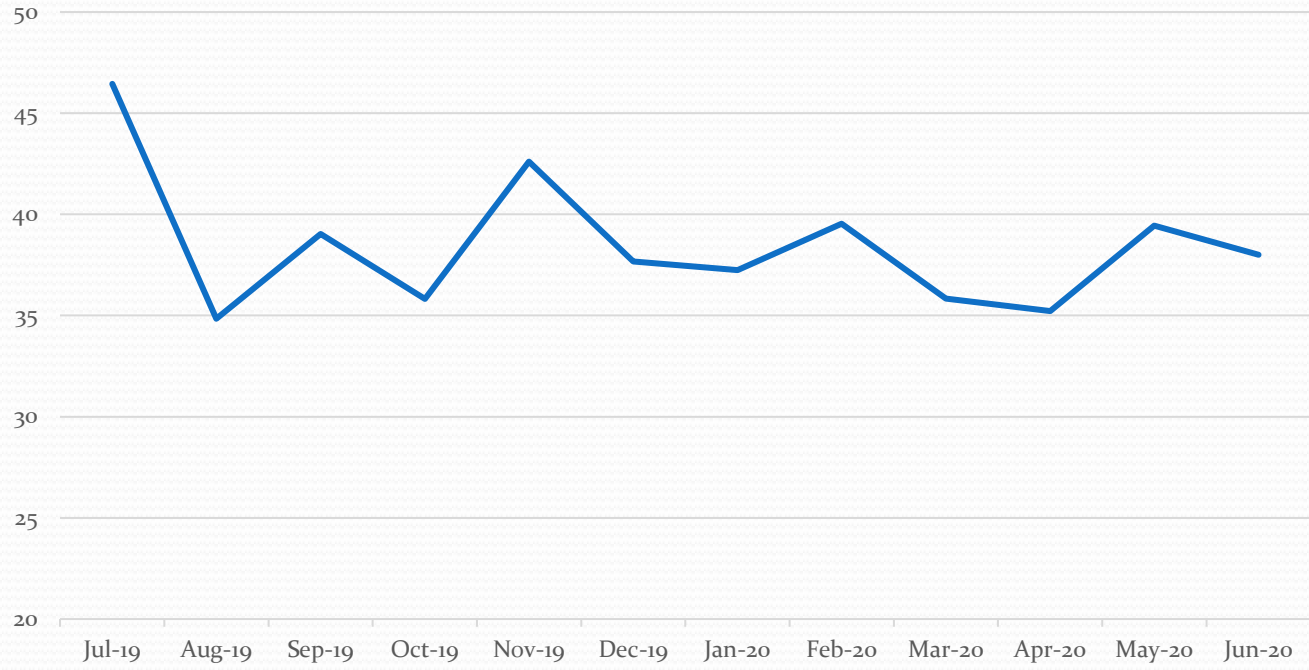
S-01 TOTAL (MG)



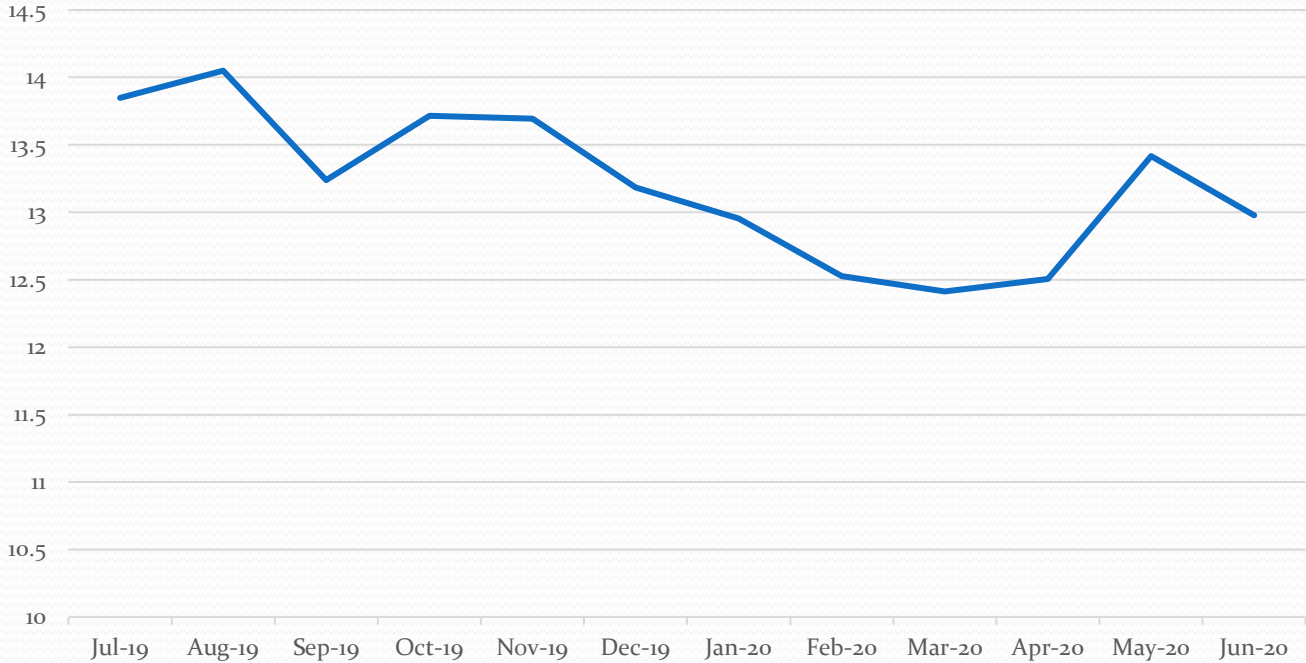
Desalters/IX/Reclaimed Wastewater



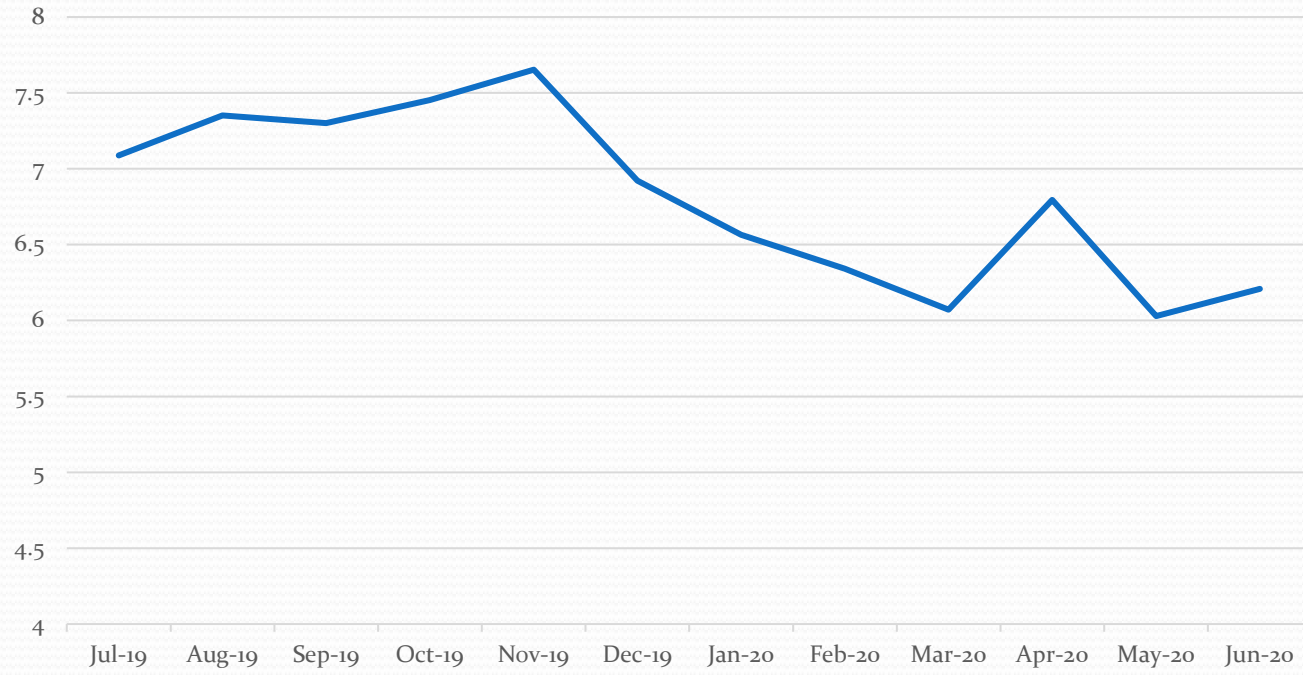
Industrial



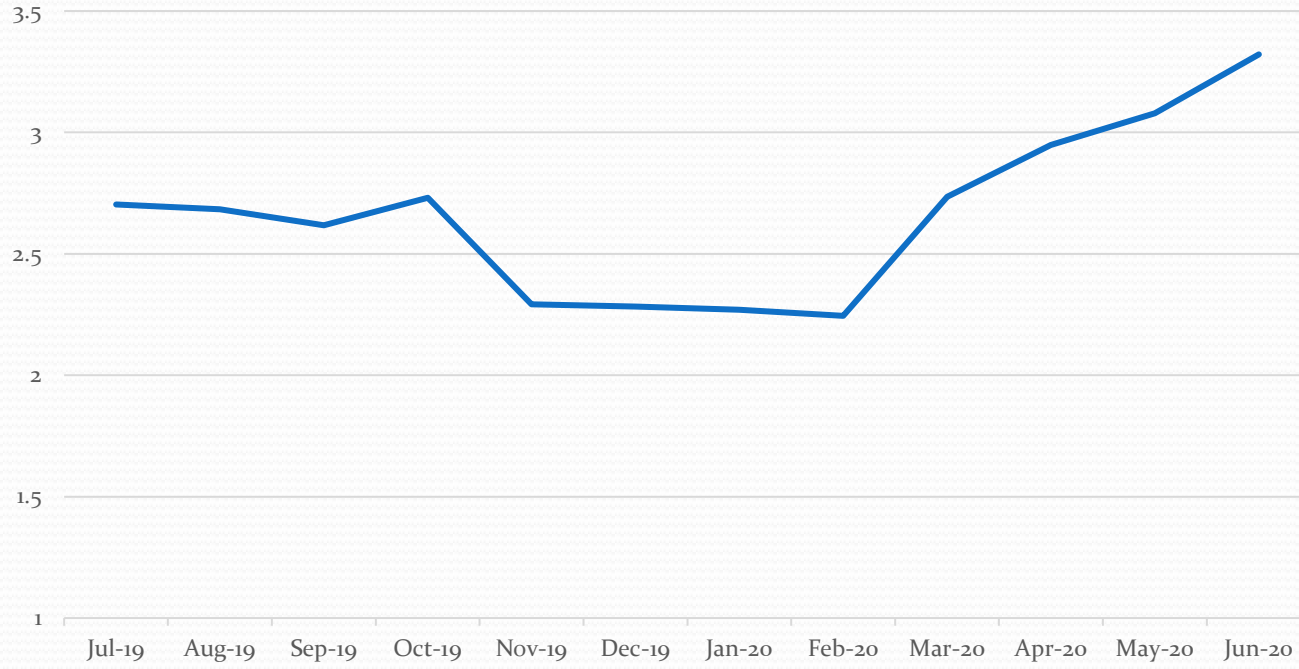
Power Plants



Domestic



Collection Stations



Other Brine Line Statistics

Parameter	Quantity	Units
Flow	4,025	Million Gallons
Biochemical Oxygen Demand	527	Tons
	1,054,000	lbs
Total Suspended Solids	1,336	Tons
	2,672,000	lbs
Salt Removed (TDS)	97,213	Tons
	194,426,000	lbs
Direct Dischargers	26	Dischargers
Indirect Dischargers	17	Dischargers
USA Digalerts Tickets Received	3,632	Tickets
Sewer System Overflows	0	SSOs

Recommendation

- Receive and file



Questions??

Attachment 1 - Fiscal Year 2019-2020 Brine Line Flows (Million Gallons)

Category	Jul-19	Aug-19	Sep-19	Oct-19	Nov-19	Dec-19	Jan-20	Feb-20	Mar-20	Apr-20	May-20	Jun-20	TOTAL
Desalters/IX/Reclaimed Wastewater	238.61	243.56	274.43	289.19	286.52	247.78	234.14	225.78	211.26	228.31	266.73	241.74	2,992.27
Industrial	46.44	34.84	39.02	35.83	42.61	37.66	37.24	39.54	35.83	35.22	39.45	38.00	567.50
Power Plants	13.85	14.05	13.24	13.72	13.69	13.18	12.95	12.53	12.41	12.51	13.42	12.98	158.53
Collection Stations	2.70	2.68	2.62	2.73	2.29	2.28	2.27	2.24	2.74	2.95	3.08	3.32	23.57
Domestic	7.09	7.35	7.30	7.45	7.65	6.92	6.57	6.34	6.07	6.79	6.03	6.21	80.97
S-01 TOTAL	319.37	308.58	341.97	358.13	364.63	318.03	300.59	299.24	312.95	343.69	399.63	358.38	4,025.18

Page Intentionally Blank

Maintenance Access Structure

PVC Liner Repairs

Carlos Quintero, Operations Manager
PA24 Committee | August 4, 2020
Item No. 5.B.

Recommendation

- Receive and file

Inland Empire Brine Line

— Brine Line Laterals

Brine Line

REACH

— IV

— IVA

— IVB

— IVD

— IVE

— V



SBVMWD

IEUA

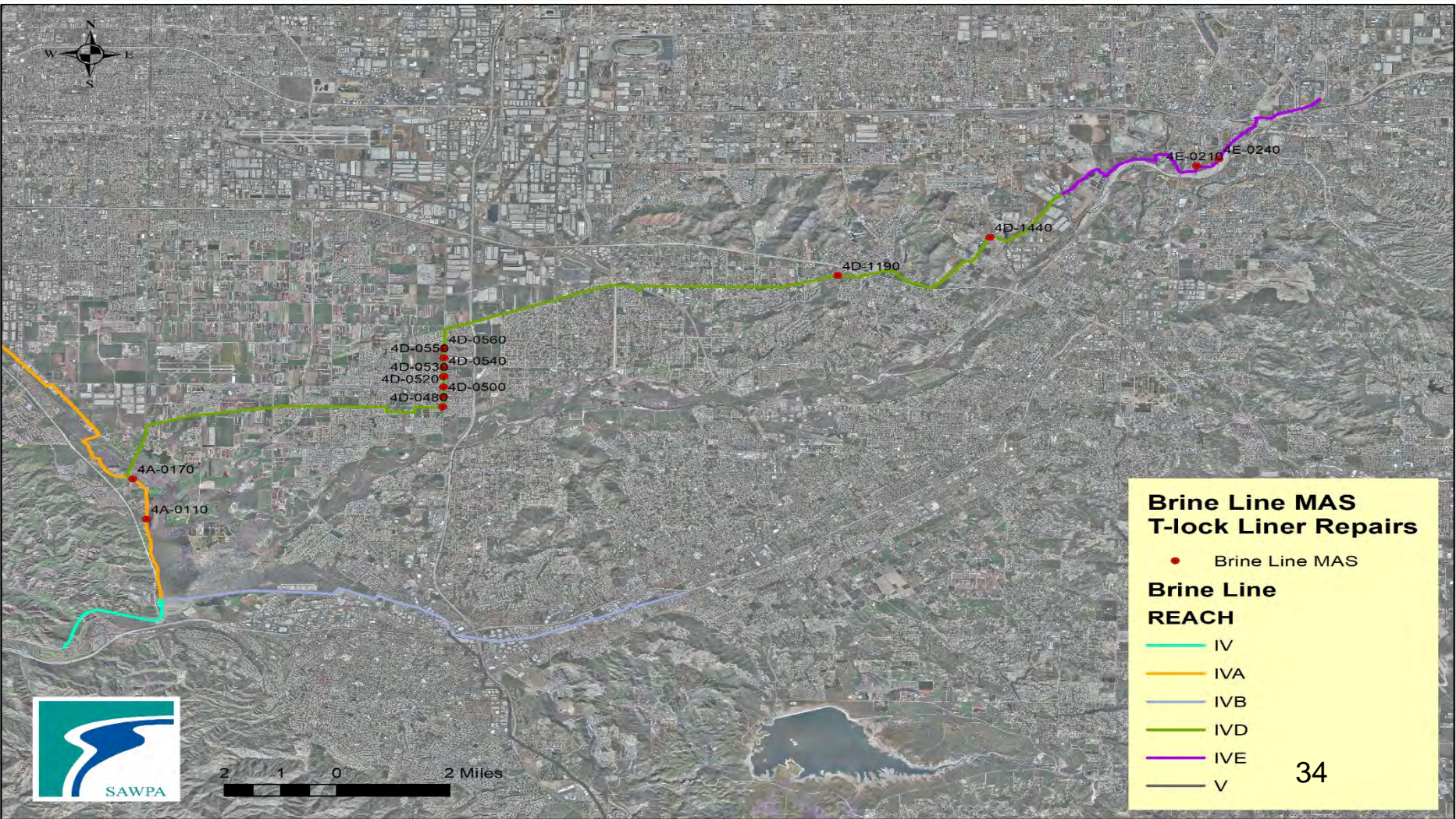
WMWD

EMWD

OCWD

5 2.5 0 5 Miles





4D-0550
4D-0560
4D-0530
4D-0540
4D-0520
4D-0500
4D-0480

4A-0170
4A-0110

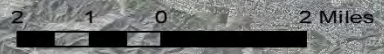
4D-1190

4D-1440

4E-0210
4E-0240

Brine Line MAS T-lock Liner Repairs

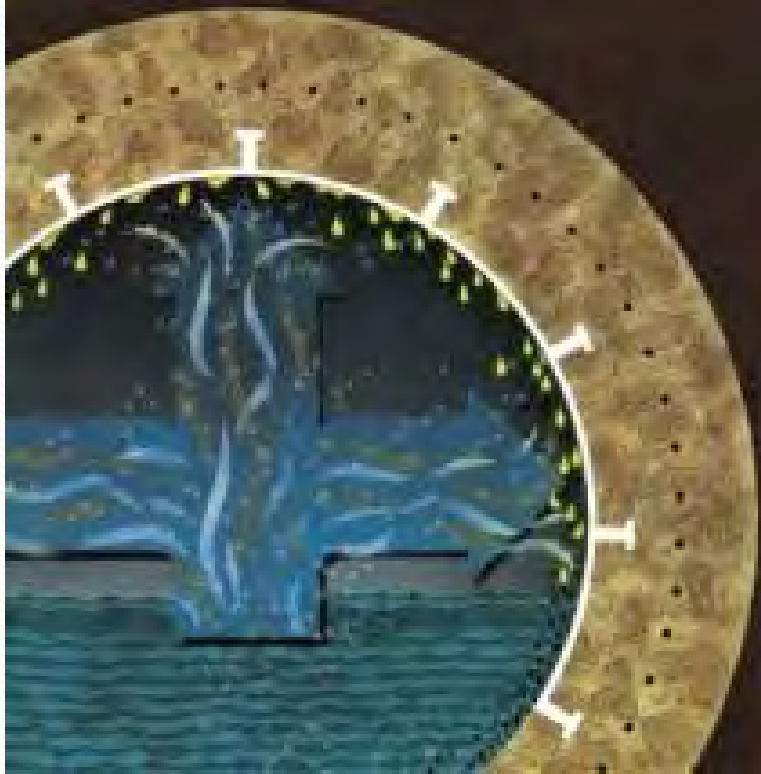
- Brine Line MAS
- Brine Line REACH**
- IV
- IVA
- IVB
- IVD
- IVE
- V



T-LOCK LINED MANHOLES



PVC Liners (T-lock/Arrowlock)



4D-1190



4D-1190



06/15/2020 14:44

06/18/2020 15:23

4D-0520



Recommendation

- Receive and file



Questions??

Page Intentionally Blank

PA 24 COMMITTEE MEMORANDUM NO. 2020.16

DATE: August 4, 2020

TO: Project Agreement 24 Committee
(Inland Empire Brine Line)

SUBJECT: Euclid Avenue (Reach IV-A and IV-D) Maintenance Access Structure
Rehabilitation Project

PREPARED BY: David Ruhl, Engineering Manager

RECOMMENDATION

That the Project Agreement 24 Committee authorize the General Manager to award a contract for public works construction to the lowest, responsive, responsible bidder, Abhe & Svoboda, Inc, for the Euclid Avenue (Reach IV-A and IV-D) Maintenance Access Structure Rehabilitation Project, in an amount not to exceed \$481,000, and waive the minor irregularities.

DISCUSSION

The project includes the modification or “sealing” of five (5) Maintenance access structures (MAS) on Reach IVD along Euclid Avenue to withstand pressurization without allowing a sanitary sewer overflow or infiltration from historically high Prado Reservoir levels. The project removes one MAS on Reach IVA along Euclid Avenue due to significant concrete deterioration. A new 12 foot fabricated pipe fitting will replace the demolished MAS.

In June 2020, the Committee directed staff to issue a Notice Inviting Bids for construction of the Project. A pre-bid meeting was held on July 6, 2020. Construction Bids were received and opened on July 22, 2020. The engineer’s estimate was \$510,000. Six (6) bids were received as follows:

<u>Bidder</u>	<u>Total Bid</u>
Abhe & Svoboda, Inc.	\$481,000
Metro Builders & Engineers	\$552,602
Weka, Inc.	\$593,201
Lucas Builders, Inc.	\$663,600
GRFCO, Inc.	\$755,000
Norstar Plumbing & Engineering, Inc.	\$813,000

Staff has reviewed all bids for compliance with the Bid Documents. Abhe & Svoboda submitted the lowest bid. SAWPA staff contacted Abhe & Svoboda references and overall received satisfactory remarks. There is one (1) minor irregularity with Abhe & Svoboda’s Bid. The contractor does not have a corporate seal and therefore, did not affix their corporate seal to their bid. However, they did provide sufficient documentation stating the bid was signed by an officer authorized to sign bids. Based on staff’s analysis and waiving the one irregularity, Abhe & Svoboda submitted the lowest, responsive, responsible bid, and is qualified to perform the work.

CEQA Notice of Exemption

In June 2020, the Committee directed staff to file a Notice of Exemption for the Project. The project is categorically exempt from CEQA under the Public Resources Code Section 15301b.

RESOURCE IMPACTS

Funds are available in FY 21 Budget, Fund 320-03 to cover the construction costs. Per SAWPA's December 18, 2018 agreement with the City of Beaumont, the City of Beaumont will reimburse SAWPA the cost of sealing the five (5) MAS on Reach IVD.

Attachments:

1. PowerPoint Presentation

Euclid Avenue (Reach IVA and Reach IVD) Maintenance Access Structure (MAS) Rehabilitation Project

David Ruhl, Engineering Manager

Project Agreement 24 Committee | August 4, 2020

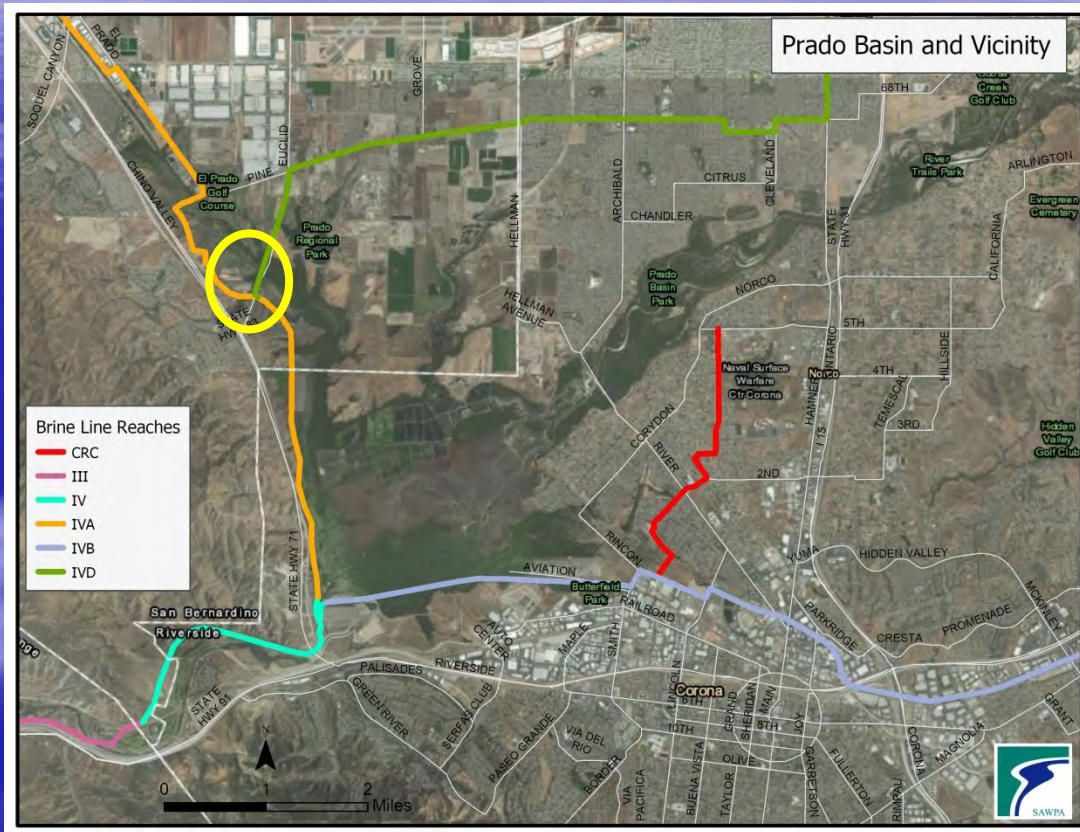
Item No. 5.C.

Euclid Avenue (Reach IVA and Reach IVD) MAS Rehabilitation Project

- Recommendation

- Authorize the GM to award a contract for public works construction to the lowest, responsive, responsible bidder, Abhe & Svoboda, for the Project, in an amount not to exceed \$481,000, and waive the 1 minor irregularity.

Project Location and Description



- Seal 5 MAS on Reach IVD to withstand pressurization
- Remove 1 MAS on Reach IVA due to concrete deterioration

Summary of Bids

<u>Bidder</u>	<u>Total Bid</u>
Abhe & Svoboda, Inc	\$481,000
Metro Builders & Engineers	\$552,602
Weka, Inc.	\$593,201
Lucas Builders, Inc.	\$663,600
GRFCO, Inc.	\$755,000
Norstar Plumbing & Engineering Inc.	\$813,000

Bid Analysis

- Qualified to perform work
- References Contacted
- 1 Minor Irregularity
 - No Corporate Seal, Certified Board Minutes Provided
- Abhe & Svoboda, Inc. submitted the lowest, responsible bid (award recommended)

Euclid Avenue (Reach IVA and Reach IVD) MAS Rehabilitation Project

- Recommendation

- Authorize the GM to award a contract for public works construction to the lowest, responsive, responsible bidder, Abhe & Svoboda, for the Project, in an amount not to exceed \$481,000, and waive the minor irregularity.

QUESTIONS?

Page Intentionally Blank

PA 24 COMMITTEE MEMORANDUM NO. 2020.17

DATE: August 4, 2020

TO: Project Agreement 24 Committee
(Inland Empire Brine Line)

SUBJECT: Alcoa Dike – Lower Reach IV-B and CRC Lateral Utility Protection Project

PREPARED BY: David Ruhl, Engineering Manager

RECOMMENDATION

That the Project Agreement 24 Committee authorize the General Manager to award a contract for public works construction to the lowest, responsive, responsible bidder, Weka Inc., for the Lower Reach IV-B and CRC Lateral Utility Protection Project, in an amount not to exceed \$1,349,805, and waive the minor irregularities.

DISCUSSION

As part of the U.S. Army Corps of Engineers (Corps) Santa Ana River Mainstem Project to increase the flood control storage behind Prado Dam the Alcoa Dike is being constructed to protect developments and private property in the area. The Lower Reach IV-B and CRC Lateral Utility Protection Project includes the removal and replacement of 440 feet of Reach IVB and about 160 feet of the CRC Lateral due to the anticipated loads from the proposed dike.

In June 2020, the Committee directed staff to issue a Notice Inviting Bids for construction of the Project. A pre-bid meeting was held on July 7, 2020. Construction Bids were received and opened on July 21, 2020. The engineer’s estimate was \$973,000. Three (3) bids were received as follows:

<u>Bidder</u>	<u>Total Bid</u>
Weka, Inc.	\$1,349,805
Lucas Builders, Inc.	\$1,653,727
T.E. Roberts	\$1,706,178

Staff has reviewed all bids for compliance with the Bid Documents. Weka submitted the lowest bid. Weka has performed several jobs for SAWPA, including the Reach V - Nichols Road Relocation Project which completed below the contract price and ahead of schedule. SAWPA staff contacted Weka’s other references and overall received satisfactory remarks. There are two minor irregularities with Weka’s Bid. Weka did not include the resume of the proposed project superintendent with their bid. SAWPA staff contacted Weka and the resume was provided. Weka’s insurance acknowledgment included a minor condition to their insurance. The condition was review with legal counsel and it was determined it can be waived without risk to SAWPA. Based on staff’s analysis and waiving the two (2) irregularities, Weka submitted the lowest, responsive, responsible bid, and is qualified to perform the work.

CEQA

In June 2020, the Committee directed staff to file a Notice of Exemption for the Project. The project is categorically exempt from CEQA under the Public Resources Code Section 15301b and 15302c.

RESOURCE IMPACTS

Funds are available in the FY21 Budget, Fund 320 to cover the construction costs.

Attachments:

1. Powerpoint Presentation

Alcoa Dike – Lower Reach IVB and CRC Lateral Protection Project

David Ruhl, Engineering Manager

Project Agreement 24 Committee | August 4, 2020

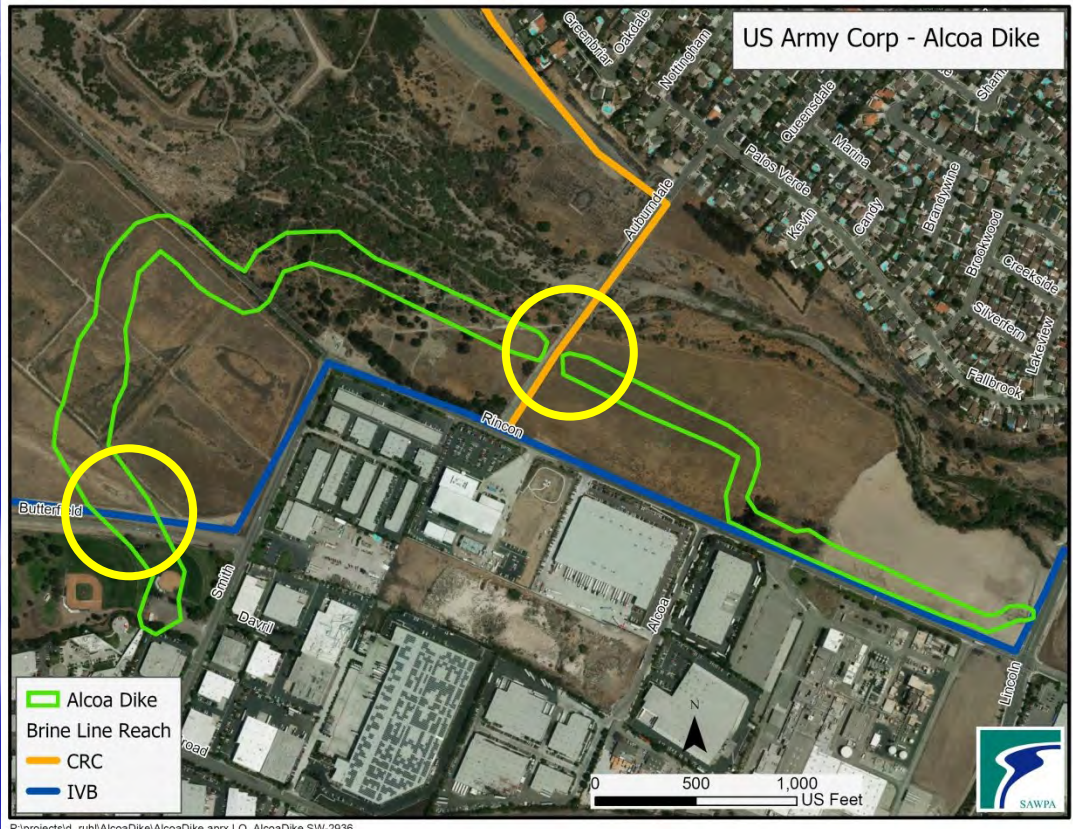
Item No. 5.D.

Lower Reach IVB and CRC Lateral Protection Project

- Recommendation

- Authorize the GM to award a contract for public works construction to the lowest, responsive, responsible bidder, Weka Inc., for the Project, in an amount not to exceed \$1,349,805, and waive the minor irregularities.

Alcoa Dike - Reach IVB/CRC Lateral



- Protect Reach 4B/CRC Lateral Due to Impacts of Alcoa Dike
- Remove and Replace about 440 feet of Reach IVB
- Remove and Replace about 160 feet of the CRC Lateral

Summary of Bids

Bidder

Total Bid

Weka, Inc	\$1,349,805
Lucas Builders, Inc.	\$1,653,727
T.E. Roberts	\$1,706,178

Bid Analysis

- Qualified to perform work
 - Previous work for SAWPA
- References Contacted
- 2 Minor Irregularities
 - Missing Superintendent Resume - provided
 - Minor Condition to Insurance
- Weka submitted the lowest, responsible bid (award recommended)

Lower Reach IVB and CRC Lateral Protection Project

- Recommendation

- Authorize the GM to award a contract for public works construction to the lowest, responsive, responsible bidder, Weka Inc., for the Lower Reach IV-B and CRC Lateral Utility Protection Project, in an amount not to exceed \$1,349,805, and waive the minor irregularities.

QUESTIONS?

Page Intentionally Blank

PA 24 COMMITTEE MEMORANDUM NO. 2020.18

DATE: August 4, 2020

TO: Project Agreement 24 Committee
(Inland Empire Brine Line)

SUBJECT: Inland Empire Brine Line Rehabilitation/Protection Projects
Construction Management and Inspection Services

PREPARED BY: David Ruhl, Engineering Manager

RECOMMENDATION

That the Project Agreement 24 Committee authorize the General Manager to execute a General Services Agreement and Task Order No. TRC320-01 in an amount not-to-exceed \$162,118 with TRC, to provide Construction Management and Inspection Services for the Inland Empire Brine Line Rehabilitation/Protection Projects.

DISCUSSION

The professional services of a Construction Management firm is necessary to oversee construction activities, and provide inspection to ensure both the Euclid Avenue (Reach IVA and Reach IVD) Maintenance Access Structure Rehabilitation Project and the Lower Reach IV-B and CRC Lateral Utility Protection Project are installed according to the plans and specifications prepared by the design engineers.

Staff requested TRC (formerly Vali Cooper and Associates) to prepare a scope of work and budget to provide construction management and inspection services. TRC has provided CM and Inspections services for SAWPA on two previous construction projects (as Vali Cooper and Associates). Their knowledge and experience were invaluable in the completion of the projects. Due to TRC's previous work with SAWPA they have extensive knowledge of the Brine Line and content of the specifications. By utilizing staff from the previous project TRC will provide the most efficient and knowledgeable staff. Due to the complexity of the Lower Reach IV-B Utility Projection Project (continuous by-pass of Reach IV-B flows, fusion of large diameter HDPE pipe, dewatering within Prado inundation area and installation of watertight HDPE tees) TRC's experience and qualification will provide the most benefit to SAWPA. A similar by-pass technical specification and the same watertight HDPE tees were utilized on the previous projects inspected by TRC. SAWPA staff will also realize some efficiency due to the utilization of the same web-based document management system. Bringing a new CM firm on board would not be cost effective due to the time associated with bringing the firm up to speed with the specifications and duplication of certain work activities between SAWPA's recent projects.

SAWPA staff has reviewed the attached scope of work and budget and has determined that it is sufficient to meet the needs of both construction projects.

RESOURCE IMPACTS

Funds are available in the FY21 Budget, Fund 320 to cover the construction management and inspection costs.

Attachments:

1. PowerPoint Presentation

Inland Empire Brine Line Rehabilitation/Protection Projects – Construction Management and Inspection Services

David Ruhl, Engineering Manager

Project Agreement 24 Committee | August 4, 2020

Item No. 5.E.

Construction Management (CM) and Inspection Services

- Recommendation

- Authorize the GM to execute a General Services Agreement and Task Order No. TRC320-01 in an amount not-to-exceed \$162,118 with TRC, to provide Construction Management and Inspection Services for the Inland Empire Brine Line Rehabilitation/Protection Projects.

CM and Inspection Services

- **Oversee Construction Activities**
- **Provide Inspection Services**
- **Ensure Project is installed per the plans and specifications**
- **TRC**
 - Knowledgeable on the brine line, specifications
 - Complex Project – HDPE Tee fused watertight MAS structures, 5 – 8 MGD by-pass system, 2- 10 feet dewatering, deep excavation
 - Similar by-pass technical specifications and HDPE Tees on previous SAWPA project
 - Efficient and cost effective use of staff
 - Utilize document management system familiar to SAWPA staff
- **Fee \$163,048 (includes 5% contingency)**

Construction Management (CM) and Inspection Services

- Recommendation

- Authorize the GM to execute a General Services Agreement and Task Order No. TRC320-01 in an amount not-to-exceed \$162,118 with TRC, to provide Construction Management and Inspection Services for the Inland Empire Brine Line Rehabilitation/Protection Projects.

QUESTIONS?

Page Intentionally Blank

**Santa Ana Watershed Project Authority
PA24 - Brine Line - Financial Report
May 2020**

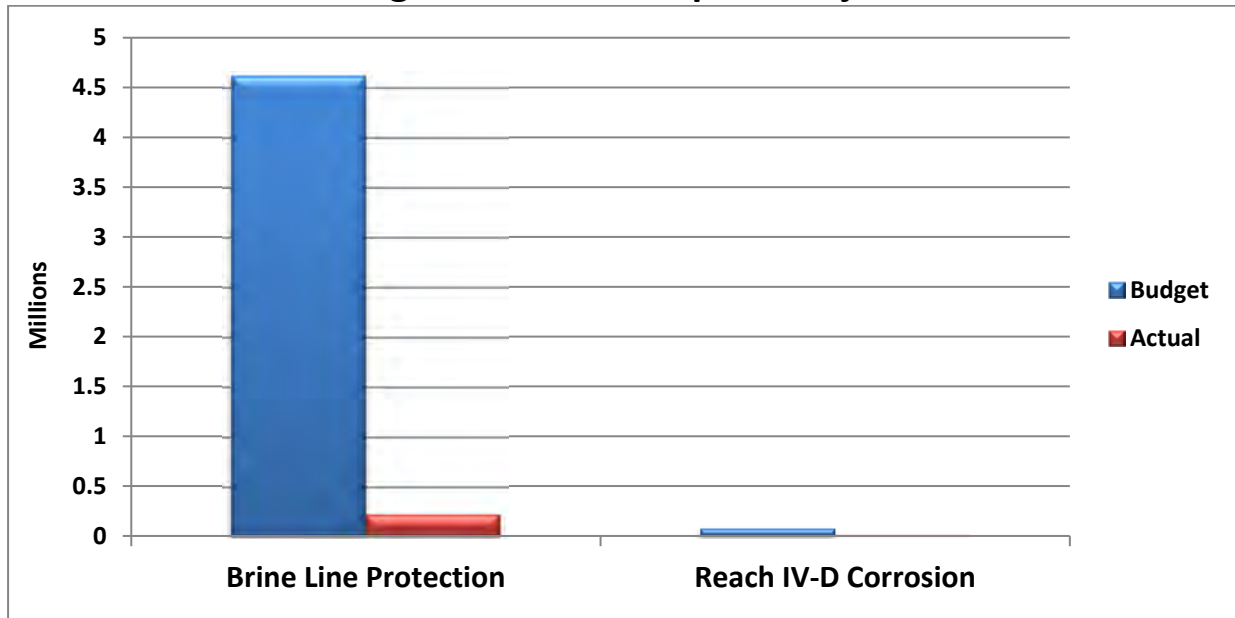
Staff comments provided on the last page are an integral part of this report.

Overview	This report highlights the Brine Line’s key financial indicators for the Fiscal Year-to-Date (FYTD) through May 2020 unless otherwise noted.
-----------------	--


Brine Line - Capital Projects

Budget to Actual – Capital Projects	Favorable			
	Annual Budget	FYTD Budget	FYTD Actual	Favorable (Unfavorable) Variance
Brine Line Protection	\$5,041,923	\$4,621,763	\$224,915	\$4,396,848
Reach IV-D Corrosion	76,211	69,860	10,082	59,778
Total Capital Costs	\$5,118,134	\$4,691,623	\$234,997	\$4,456,626

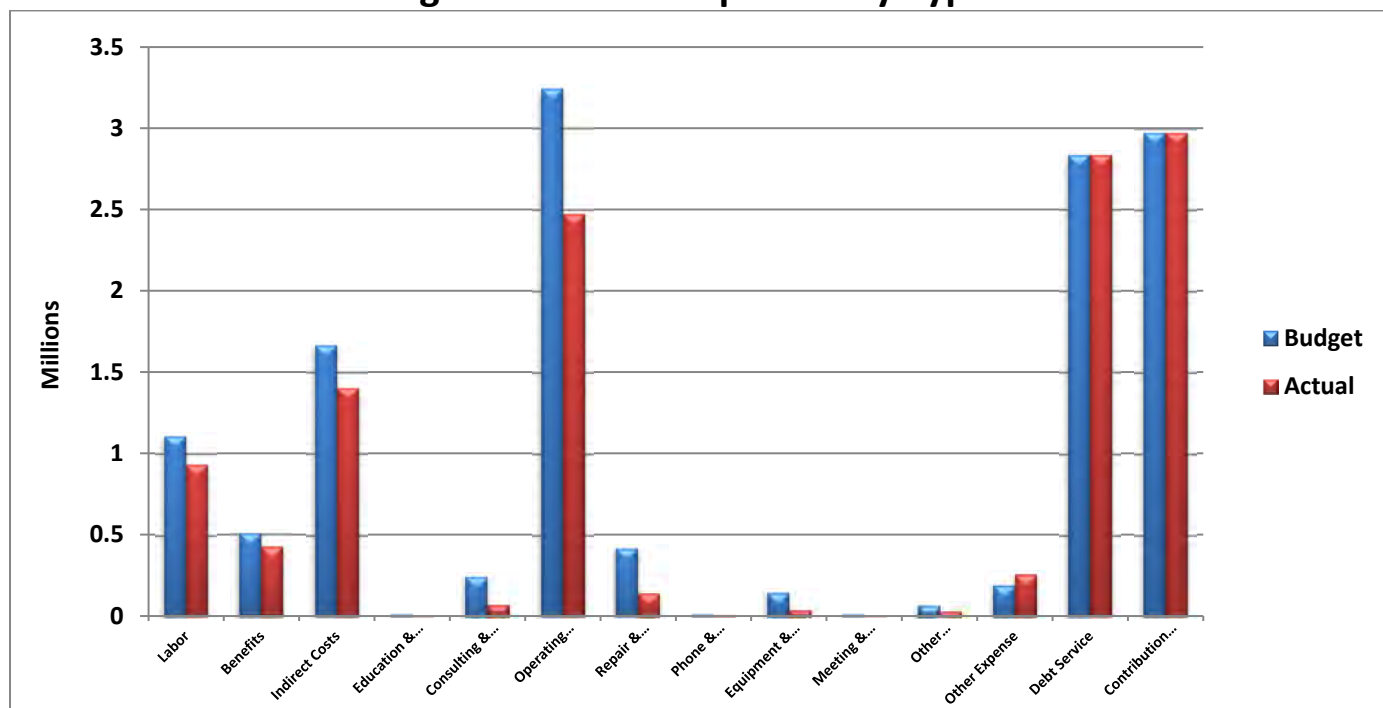
Budget to Actual - Capital Projects



Brine Line – Operating

Budget to Actual - Expenses by Type				 Favorable
	Annual Budget	FYTD Budget	FYTD Actual	Favorable (Unfavorable) Variance
Labor	\$1,206,933	\$1,106,355	\$932,091	\$174,264
Benefits	550,510	504,634	425,033	79,601
Indirect Costs	1,816,182	1,664,834	1,402,796	262,038
Education & Training	12,000	11,000	2,720	8,280
Consulting & Prof Svcs	265,000	242,917	73,132	169,785
Operating Costs	3,537,600	3,242,800	2,474,653	768,147
Repair & Maintenance	450,000	412,500	143,144	269,356
Phone & Utilities	11,000	10,083	6,929	3,154
Equip & Computers	156,500	143,458	39,622	103,836
Meeting & Travel	10,000	9,167	1,962	7,205
Other Admin Costs	72,900	66,825	32,256	34,569
Other Expense	199,250	187,646	252,053	(64,408)
Debt Service	2,835,027	2,835,027	2,835,753	(726)
Contribution to Reserves	3,244,227	2,973,876	2,973,876	-
Total	\$14,367,130	\$13,411,121	\$11,596,020	\$1,815,101

Budget to Actual - Expenses by Type



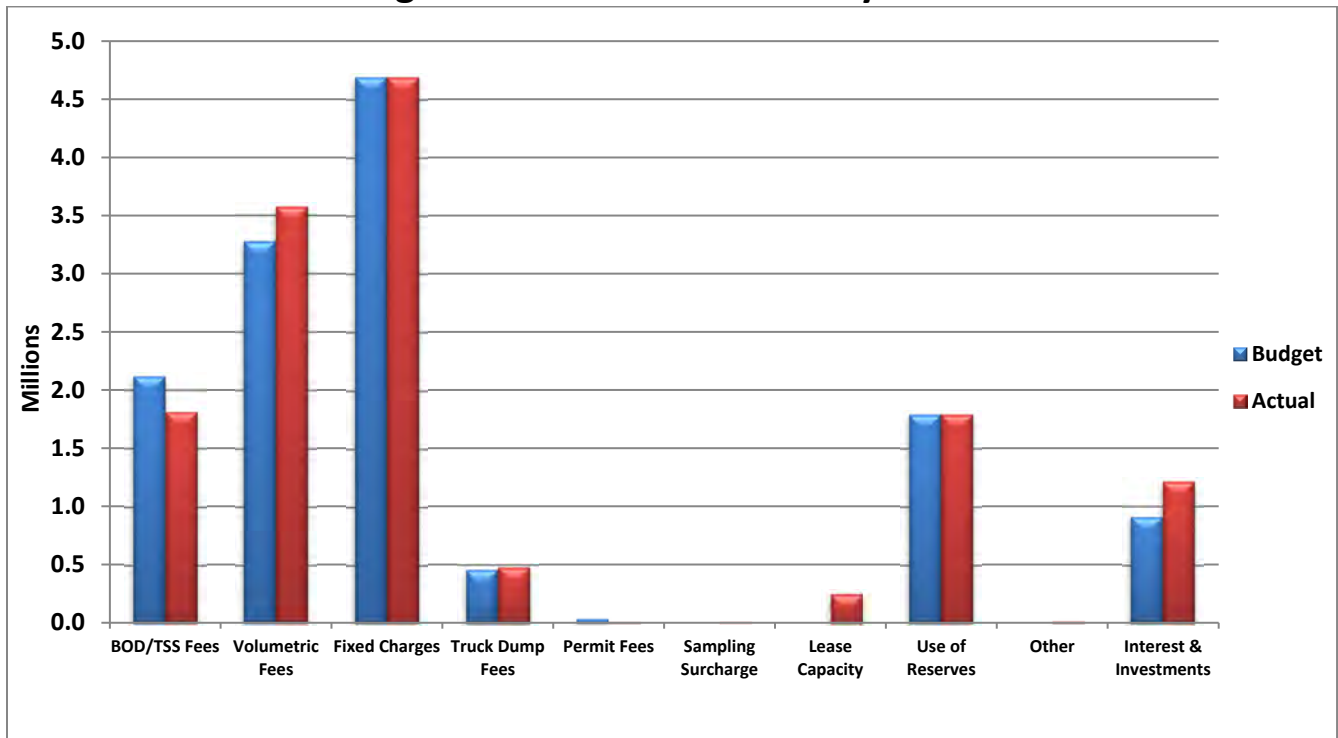
Budget to Actual - Revenues by Source



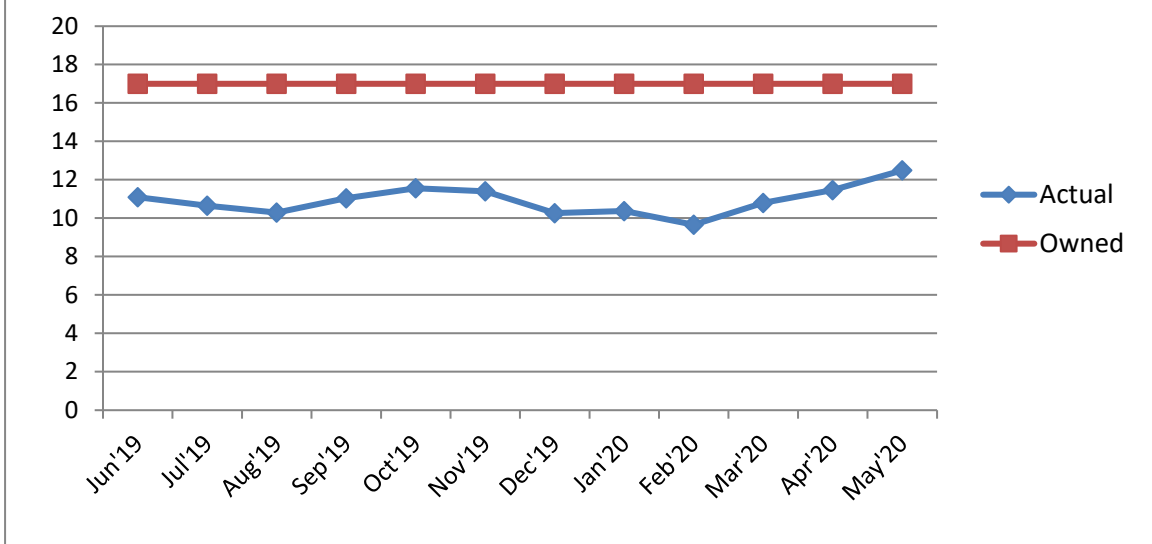
On Track

	Annual Budget	FYTD Budget	FYTD Actual	Favorable (Unfavorable) Variance
BOD/TSS Fees	\$2,308,200	\$2,115,850	\$1,810,048	(\$305,802)
Volumetric Fees	3,573,350	3,275,571	3,571,810	296,239
Fixed Charges	5,118,528	4,691,984	4,691,984	-
Truck Dump Fees	496,000	454,667	476,105	21,438
Permit Fees	36,025	33,023	9,100	(23,923)
Sampling Surcharge	-	-	7,059	7,059
Lease Capacity Revenue	-	-	246,253	246,253
Use of Reserves	1,790,027	1,790,027	1,790,027	-
Other Revenue	-	-	10,334	10,334
Interest & Investments	1,045,000	907,500	1,212,117	304,617
Total	\$14,367,130	\$13,268,622	\$13,824,837	\$556,215

Budget to Actual - Revenues by Source



Average Daily Flow by Month

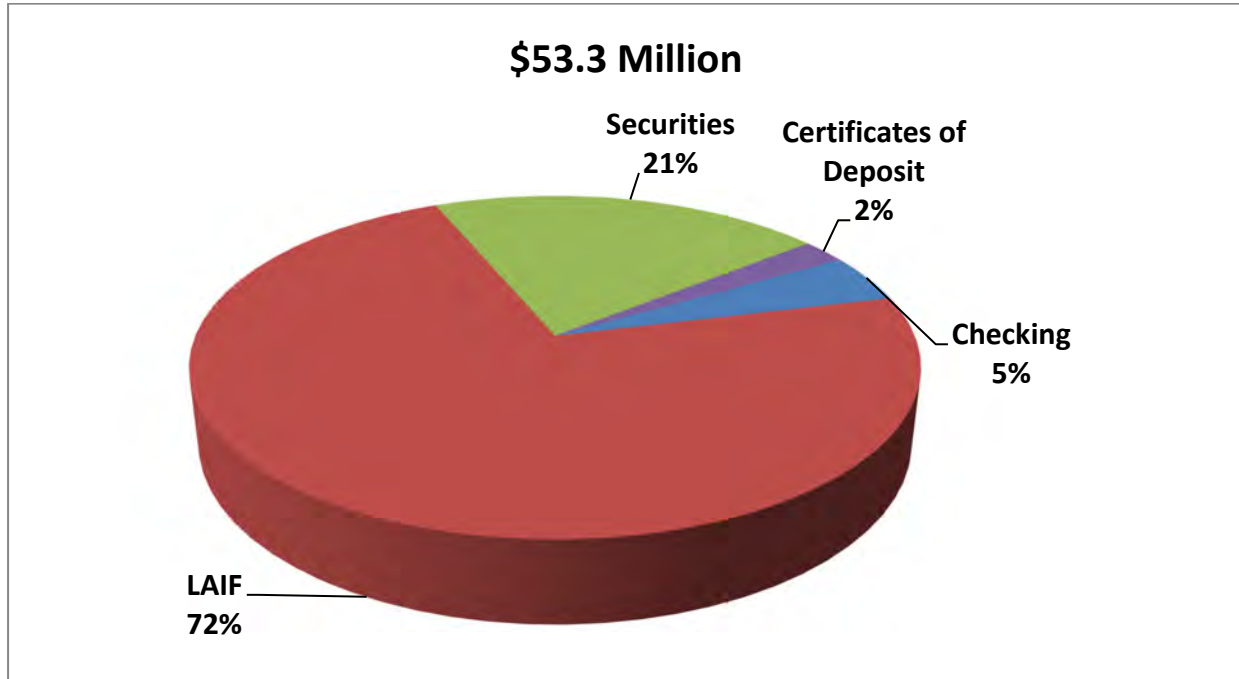


Total Discharge by Agency (in million gallons)

Discharger	Jul '19	Aug'19	Sep'19	Oct'19	Nov'19	Dec'19	6 Month Total
Chino Desalter Authority	76.3642	81.0245	108.2049	125.7369	130.5940	123.9218	645.8463
Eastern Municipal Water District	70.8916	70.0966	71.9713	76.8378	73.3792	56.0144	419.1909
Inland Empire Utilities Agency	17.6180	17.8426	16.2993	18.5452	20.3483	18.4636	109.1170
San Bernardino Valley MWD	26.1114	25.6140	24.3135	25.5259	25.5015	26.0097	153.0760
Western Municipal Water District	125.6778	111.3223	118.5591	108.7548	112.5143	91.3404	668.1687
Truck Discharge	2.7080	2.6838	2.6175	2.7303	2.2921	2.2833	15.3150
Total	319.3710	308.5838	341.9656	358.1309	364.6294	318.0332	2,010.7139

Discharger	Jan'20	Feb'20	Mar'20	Apr'20	May'20	Jun'20	Year Total
Chino Desalter Authority	116.1585	100.4608	111.0748	127.8082	146.3070	0.00	1,247.6557
Eastern Municipal Water District	46.6572	47.2998	63.6969	71.1265	80.4498	0.00	728.4110
Inland Empire Utilities Agency	17.4426	16.6445	14.3043	12.8851	12.9725	0.00	183.3660
San Bernardino Valley MWD	21.5742	20.8120	24.5125	26.0766	27.7502	0.00	273.8015
Western Municipal Water District	96.4909	111.7791	96.6214	102.8433	124.8832	0.00	1,200.7866
Truck Discharge	2.2697	2.2414	2.7467	2.9489	3.0681	0.00	28.5898
Total	300.5931	299.2377	312.9465	343.6886	395.4308	0.00	3,662.6106





Total Cash & Investments - May



Reserve Fund Balance – May

	Amount
Self Insurance	\$4,347,375
Debt Retirement	3,622,798
Pipeline Replacement	22,414,206
OCSD Rehabilitation	3,706,357
Capacity Management	11,869,104
Future Capacity	1,817,199
Rate Stabilization	1,018,308
Flow Imbalance	87,829
Brine Line Operating	4,391,770
Total Reserves	\$53,274,946

Legend

<u>Compared to Budget</u>		
	Ahead or Favorable	Above +5% Favorable Revenue or Expense Variance
	On Track	+5% to -2% Variance
	Behind	-3% to -5% Variance
	Concern	Below -5% Variance

Staff Comments

For this month's report, the item(s) explained below are either "behind", a "concern", or have changed significantly from the prior month.

- 1) Capital Projects are 95% below budget. While the OCSD Rock Removal Project is almost complete, we have not received invoices from OCSD. It is anticipated that all projects will be on track with the budget at the end of the fiscal year.