



# Recomputation of Ambient Water Quality in the Santa Ana River Watershed

BMPTF: June 18, 2019

# Ambient Water Quality Phases

---

## 1: Data Gathering

- ✓ Data Compilation
- ✓ QA/QC, Process, and Upload recent data

## 2: Point Statistics

- ✓ Calculate Water Quality Point Statistics
- ✓ Shapiro-Wilk Test for Normality

## 3: Computations

- ✓ Groundwater Elevation Contours
- ✓ Nitrate, TDS Concentrations
- ✓ Compute ambient water quality for GMZ's

## 4: Interpretive Tools

- ✓ Innovative Interpretive Tool

# 1: Data Gathering

## Data Compilation

Color	Indicator
	No response received
	Working on data request
	Processing Data

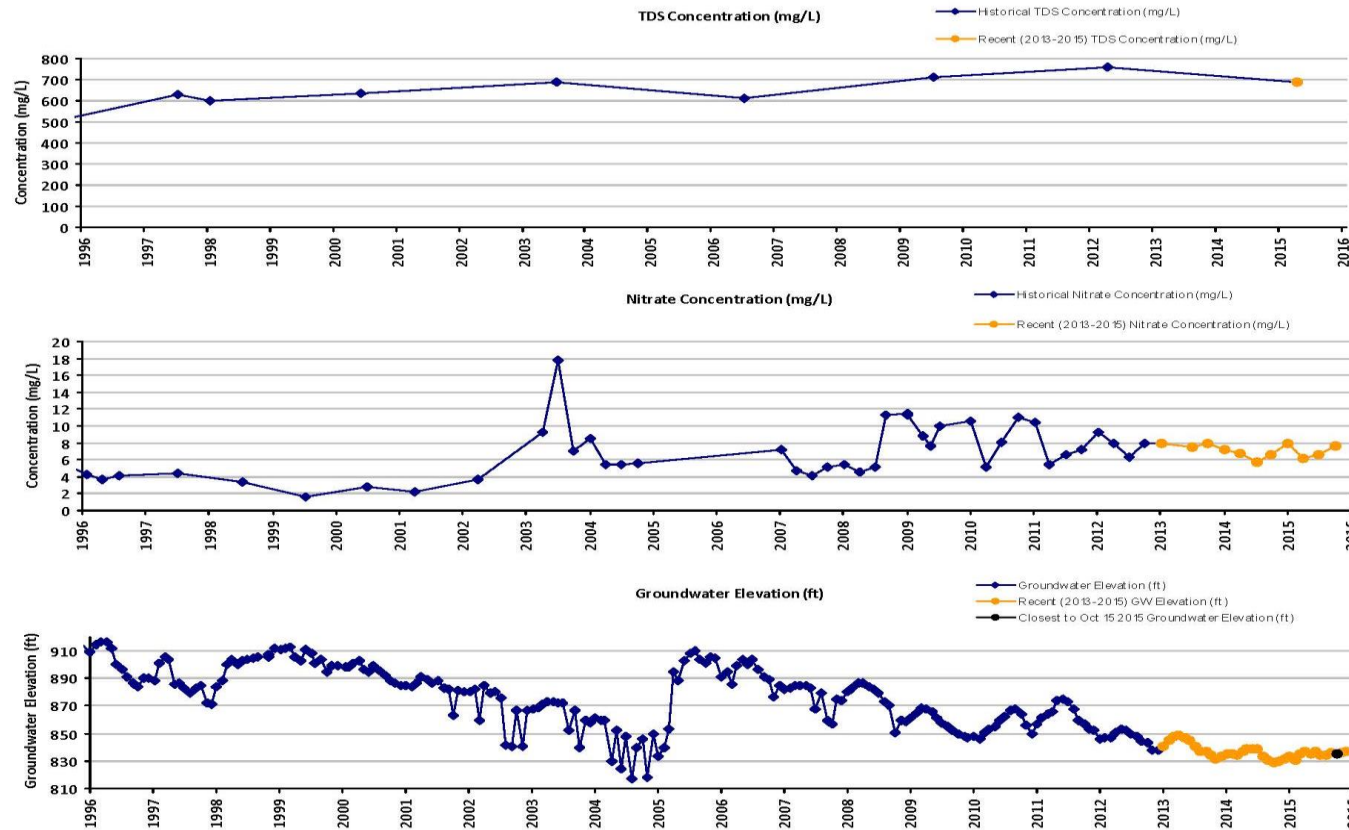
1	Banning, City of	20	Riverside County Landfills
2	Beaumont, City of	21	Riverside, City of (Public Utilities)
3	Beaumont Cherry Valley Water District	22	Riverside-Highland Water Company
4	Chino Basin Watermaster	23	Rubidoux Community Services District
5	Colton, City of	24	San Bernardino County Landfills
6	Colton/San Bernardino Regional Tertiary Treatment and Water Reclamation Authority	25	San Bernardino Municipal Water Department
7	Corona, City of	26	San Bernardino Valley Municipal Water District
8	East Valley Water District		
9	Eastern Municipal Water District	27	San Geronio Pass Water Agency
10	Elsinore Valley Municipal Water District	28	South Mesa Water Company
11	Home Gardens County Water District	29	Temescal Valley Water District
12	Inland Empire Utilities Agency	30	West Valley Water District
13	Irvine Ranch Water District	31	Western Heights Water Company
14	Jurupa Community Services District	32	Western Municipal Water District
15	Loma Linda, City of	33	Western Riverside County Regional Wastewater Authority
16	Muscoy Mutual Water Company		
17	Orange County Water District	34	Yucaipa Valley Water District
18	Redlands, City of		
19	Rialto, City of		

# 1: Data Gathering

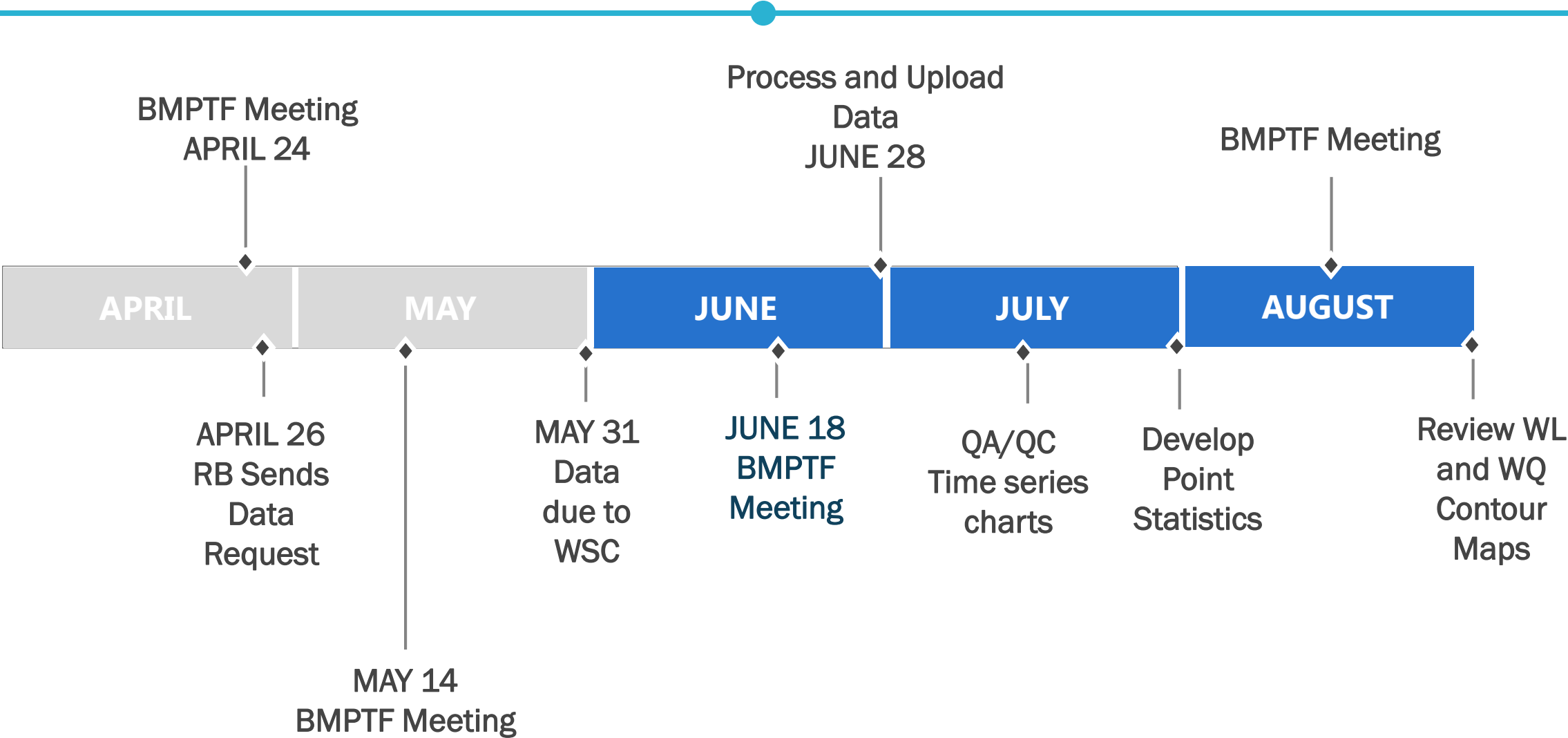
## QA/QC, Process, and Upload Recent Data

Ambient Water Quality Trend Charts for TDS, Nitrate, and Groundwater Elevation for the Recomputation Period 1996 to 2015

Well ID 1001958  
Management Zone Riverside A



# Near-term Schedule





A photograph of two people kayaking on a calm body of water. The person in the foreground is on the left, wearing a green shirt, with their arms and hands on a black paddle. The person in the background is further away, also in a kayak, with a yellow paddle. The water is still, reflecting the light. The sky is a pale blue. A white horizontal line with a dot in the center is positioned above the text.

# QUESTIONS?