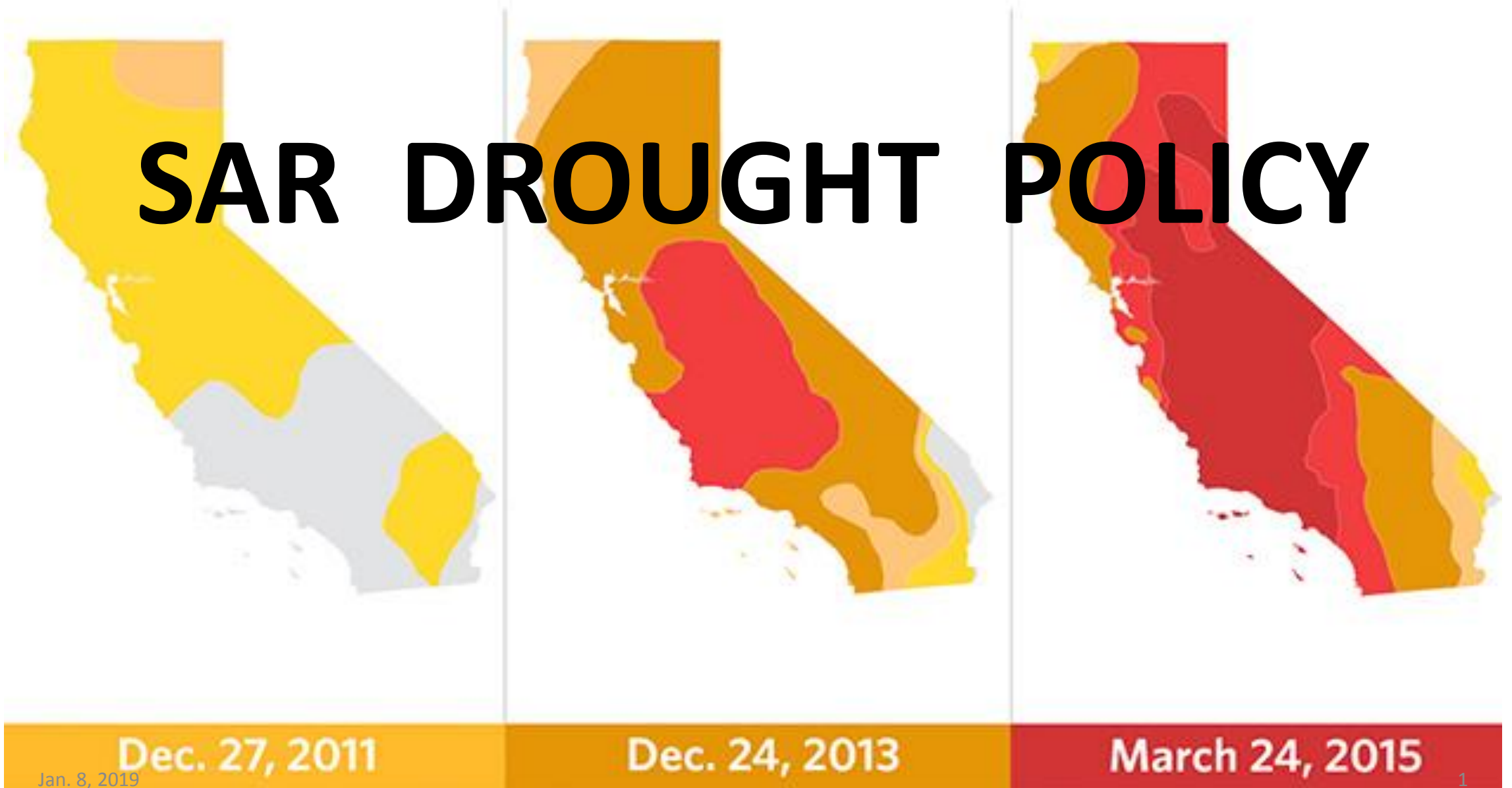
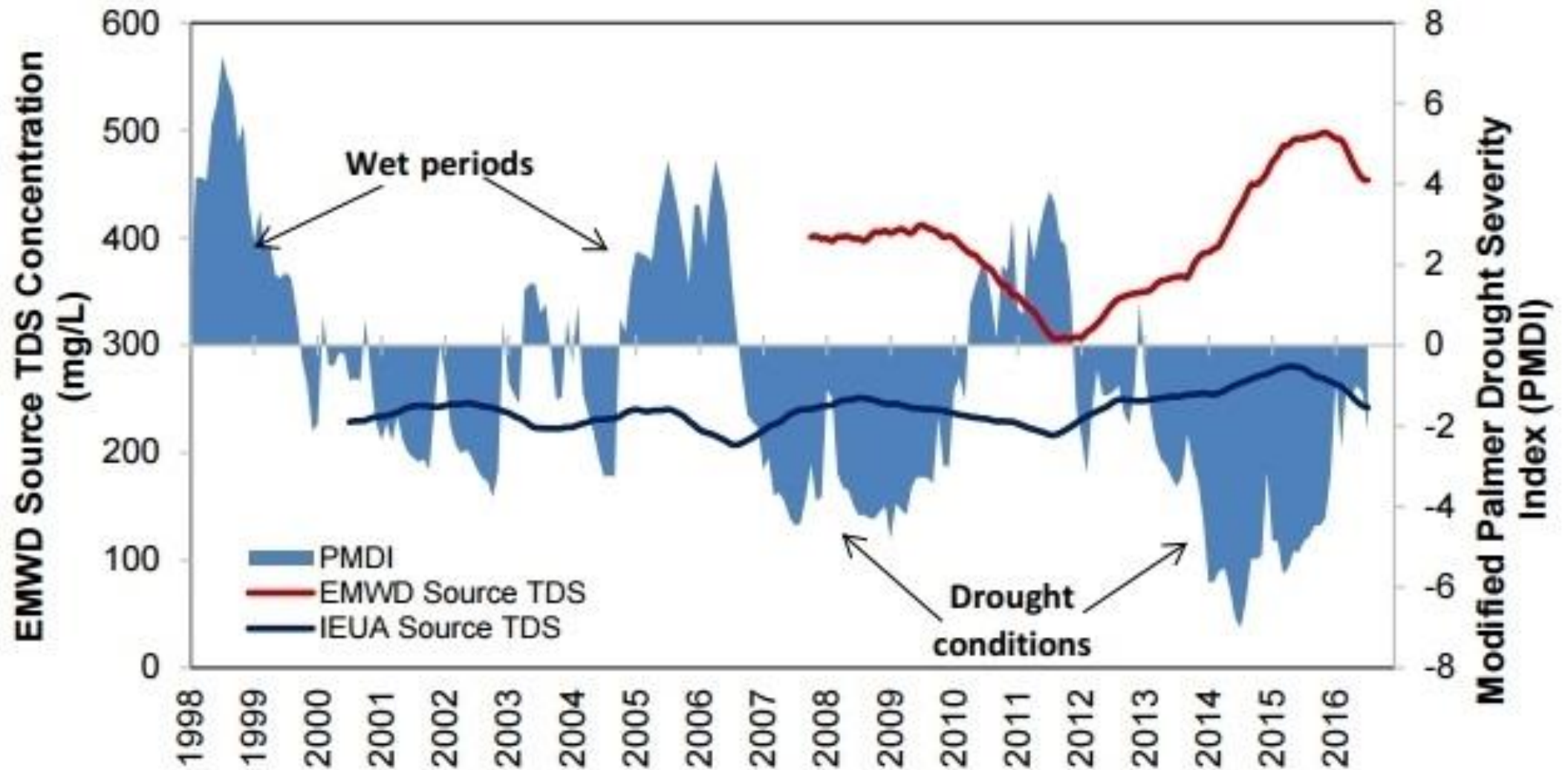


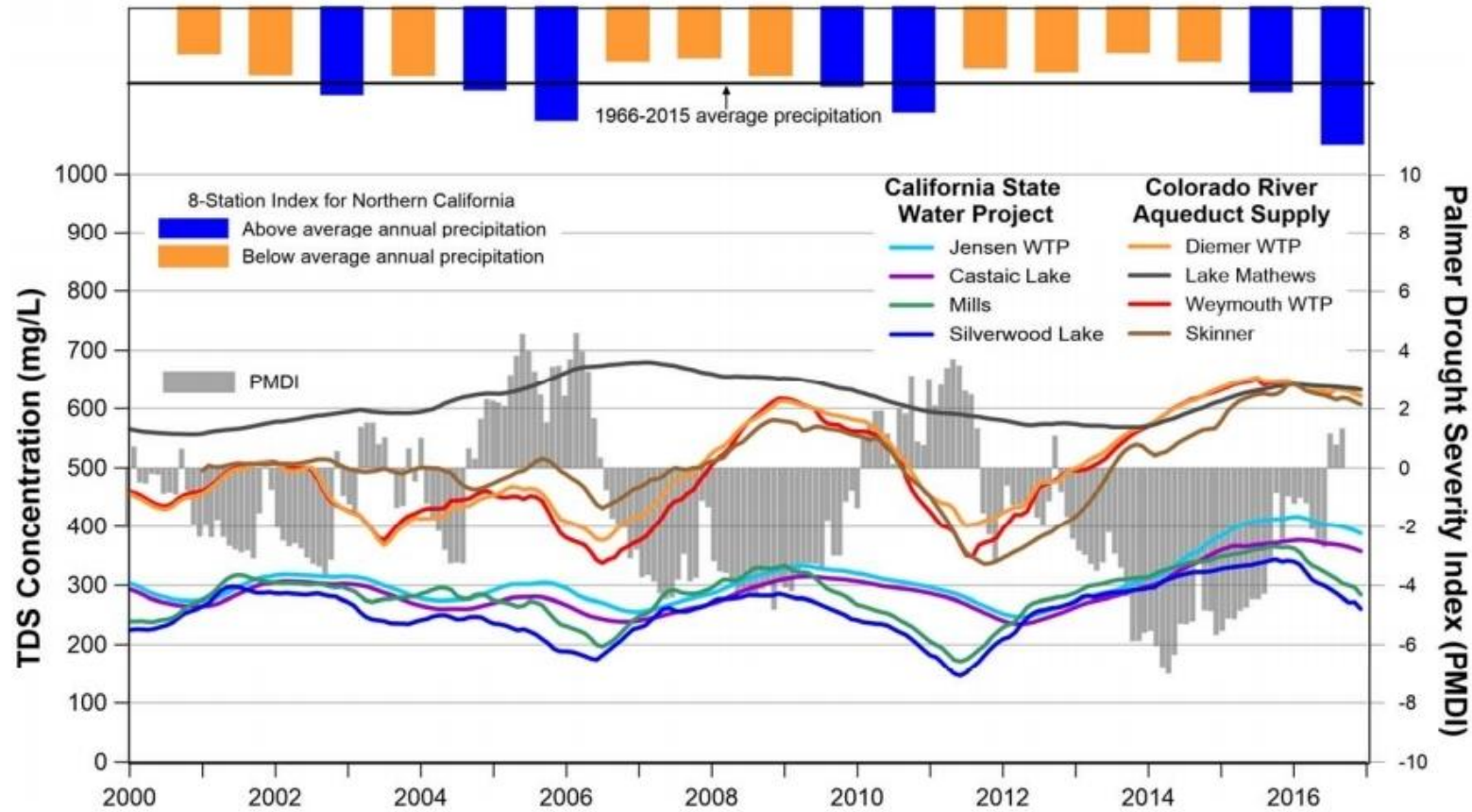
None Abnormally Dry Moderate Severe Extreme Exceptional

# SAR DROUGHT POLICY





**Figure 10. Modified Palmer Drought Severity Index and Source TDS, EMWD and IEUA**



Sources: MWDSC (2017), NOAA (2017), and DWR (2018)

Figure 9



Daniel B. Stephens & Associates, Inc.

3/29/18

SOUTHERN CALIFORNIA SALINITY COALITION  
Surface Supply Water TDS Concentration and  
Palmer Drought Severity Index for California

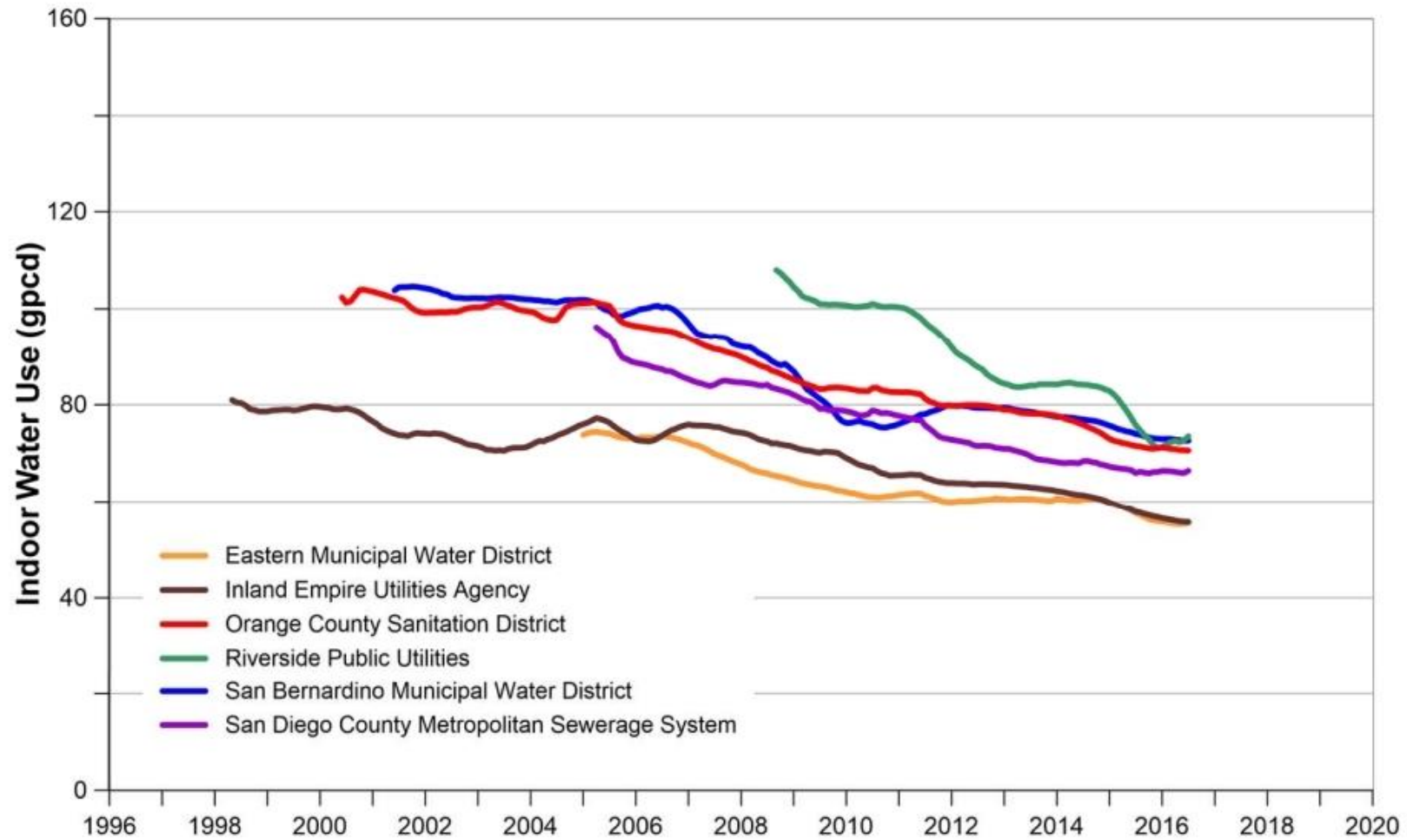


Figure 3

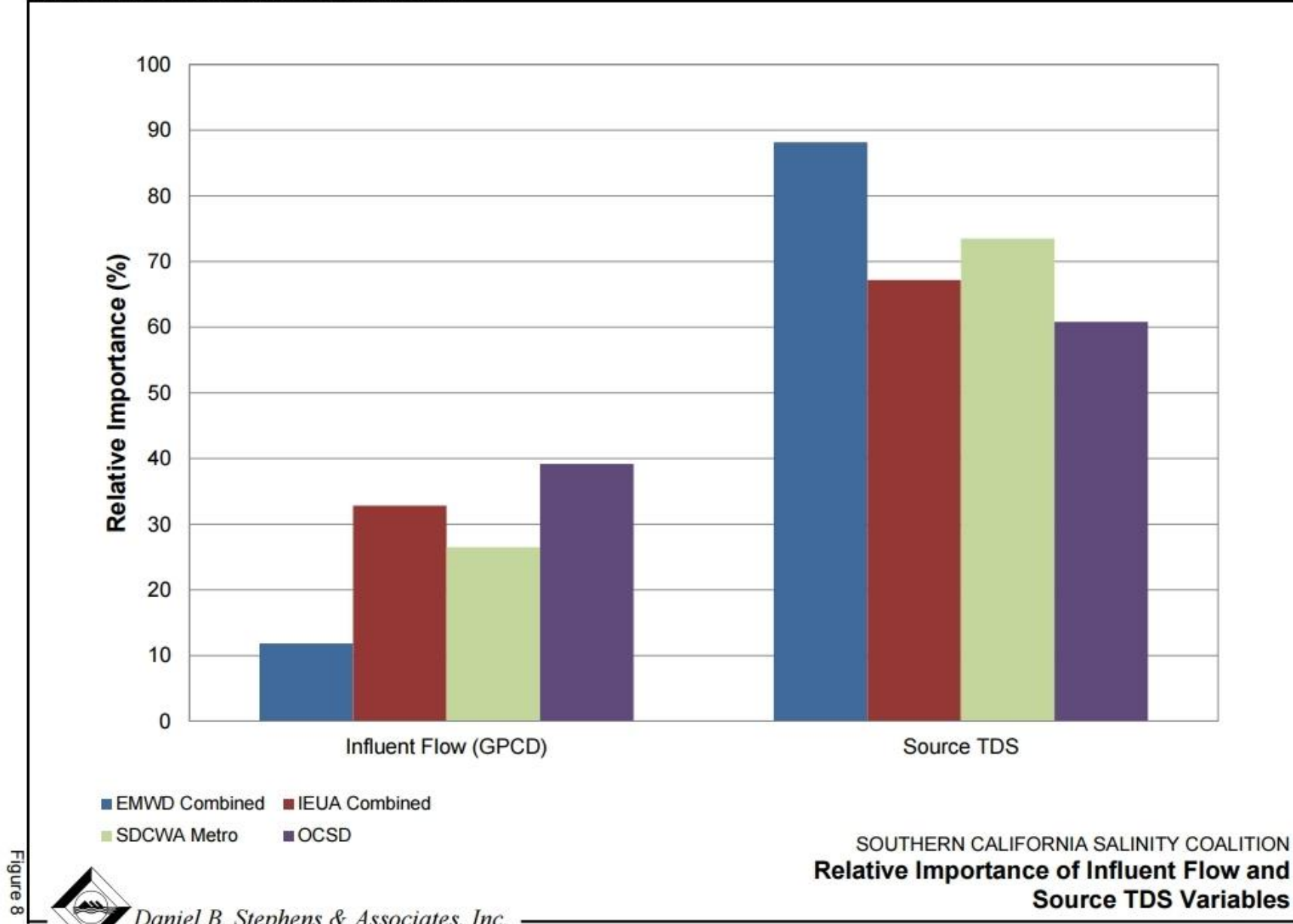


Daniel B. Stephens & Associates, Inc.

3/29/18

SOUTHERN CALIFORNIA SALINITY COALITION  
Indoor Per Capita Water Use Trends





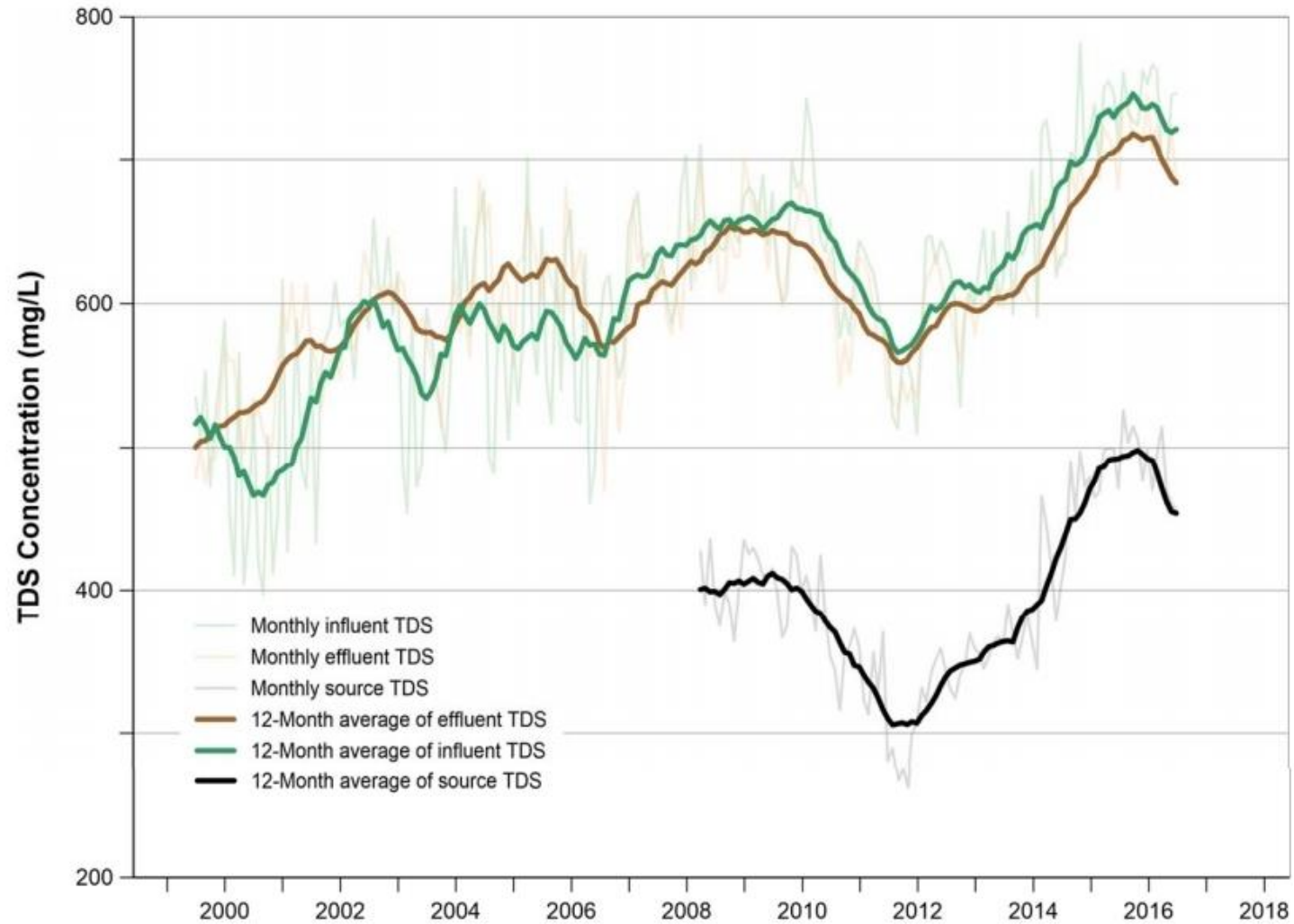


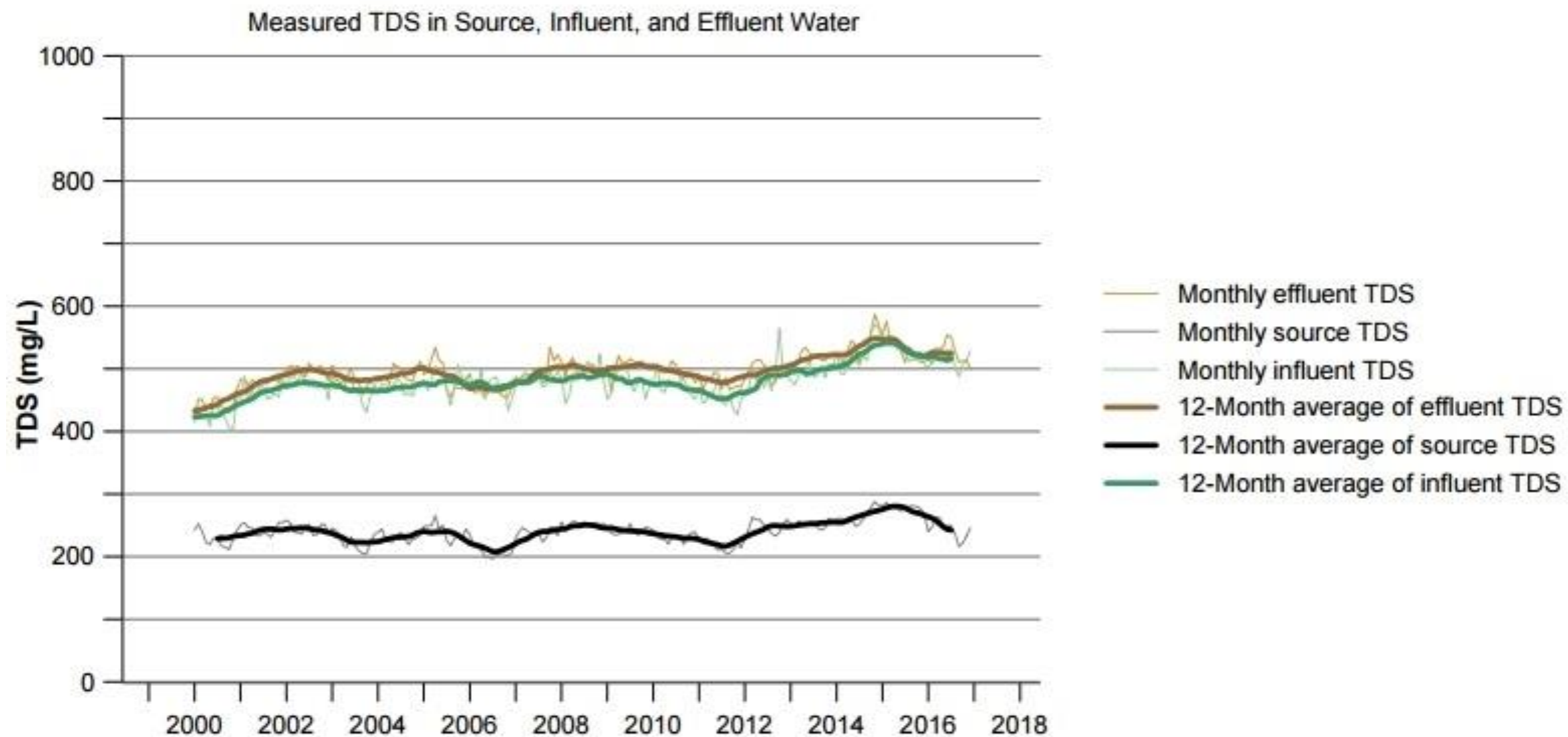
Figure 7

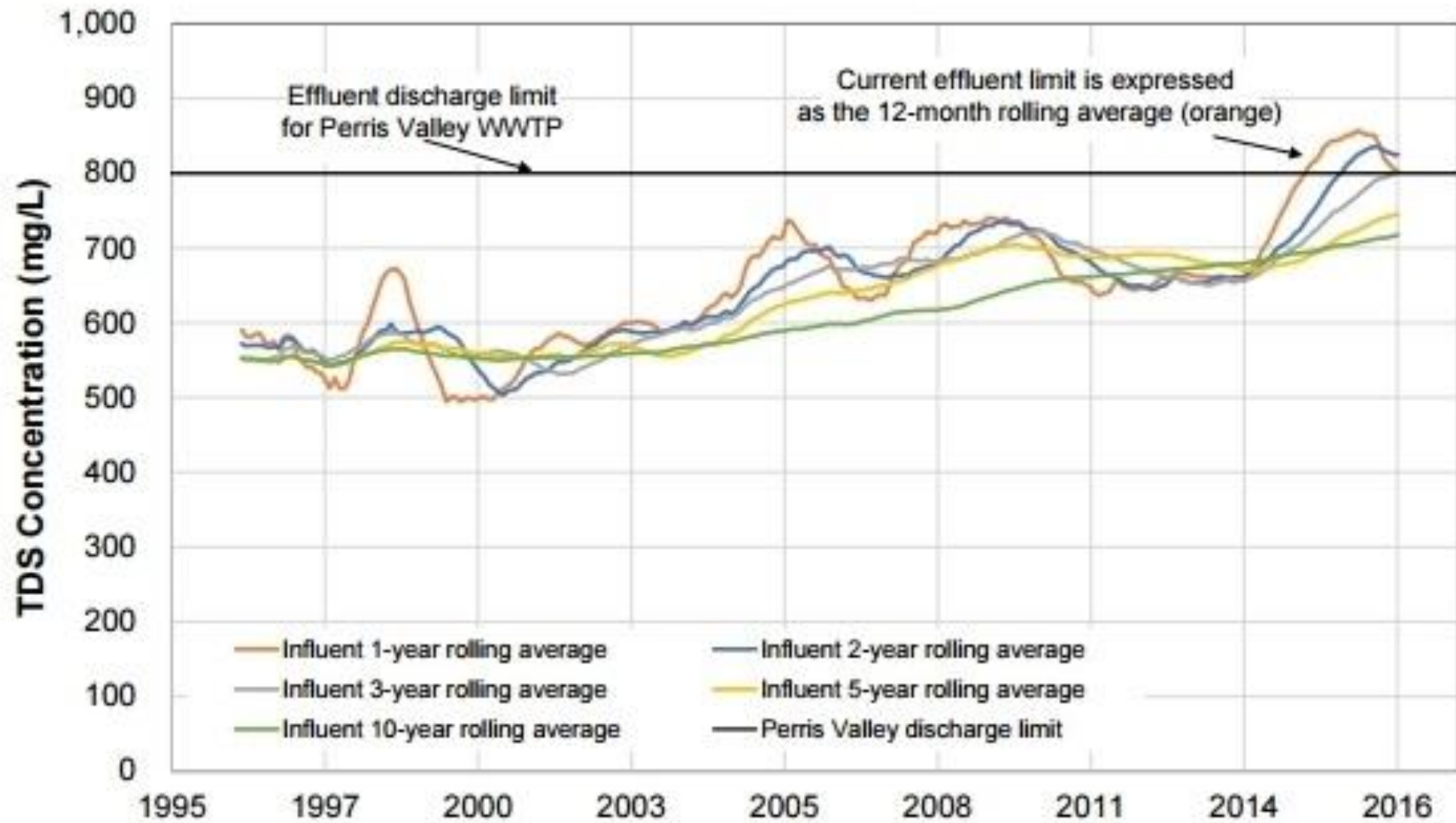


Daniel B. Stephens & Associates, Inc.

3/29/18

SOUTHERN CALIFORNIA SALINITY COALITION  
Influent, Effluent, and Source TDS Trends for EMWD  
(Weighted Average of All Sewersheds)





**Figure 12. Perris Valley WWTP Effluent TDS Using Varied Rolling Averages**





**Figure 13. La Cañada WWTP Effluent TDS Using Varied Rolling Averages**

# Inconsistent Averaging Periods

- Groundwater Objectives = 20 years
- Wasteload Allocation = 10 years (driest)
- Surface Water Objective for SAR-Reach 2 = 5 years
- NPDES Permits = 1 year (12 month rolling average)

# Drought Policy Options

- Temporary Conditional Variance/Exception
- Dual Effluent Limits: Normal and Drought Conditions
- Re-calculate Annual Average by Adjusting for Conservation Effect
- Increase Averaging Period to be Consistent w/ Wasteload Allocation
- Establish an Approved Offset Program:
  - Credits earned with desalter projects
  - Credits earned by being UNDER the effluent limits
  - Credits earned by increasing low-TDS stormwater recharge