



Santa Ana Watershed Project Authority

Capitol Update

January 2019

Michael Boccadoro
Beth Olhasso



West Coast Advisors
Strategic Public Affairs

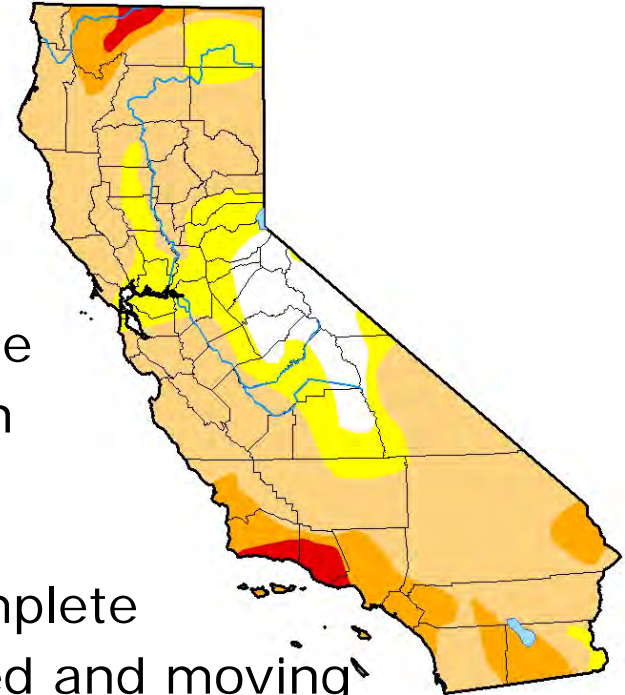
Overview

- Water supply situation
- 2018 Session recap
- Election overview
- SAWPA legislative delegation and leadership changes
- Key issues for 2019
- Strategies & recommendations



Water Supply Update

- 2018 water year ended drier than normal
 - 92% of the state at least "abnormally dry" (only 44% in January 2018)
- Carryover storage in fair shape
- Surface water supplies remain constrained
 - Unimpaired flows
- Oroville Dam work nearly complete
- New storage projects approved and moving forward
- 2019 Water Year off to a slow start, but improving
 - Snowpack at 91% of average



2018 Legislative Recap


- Water-Use Efficiency: (AB 1668 & SB 606):
 - 55 GPCD scaling down to 50 by 2030
 - Bonus incentive up to 15% of potable reuse
- Safe and affordable drinking water fund (SB 623)
- Small System Water Authority Act (AB 2050)




Moving Ahead

Outlook for 2019


Election Overview

- 
- Strong turnout – over 65% - almost 13 million voters
 - Strongest midterm in 36 years
 - Newsom elected – left leaning Governor who mirrors CA voter disdain for Trump
 - Democrats make major gains in Legislature
 - 2/3 majority in both houses
 - 60/20 in Assembly
 - 29/11 in Senate
 - Proposition 3 Water Bond fails
 - 50.7% voted against
 - First to fail in 30 years (last 1990), 9 previous bonds passed including Proposition 68 in June
 - Reasons
 - Too big - \$8.9 billion & pay-to-play
 - Competition on ballot
 - Drought memories faded
 - Strong editorial opposition throughout the state


Newsom Transition

- 
- First Democrat-to-Democrat transition in over a century – 130 years
 - Allows for measured transition
 - Senior Staff
 - Ann O’Leary – Chief of Staff
 - Ana Matosantos – Cabinet Secretary
 - Anthony Williams- Legislative Secretary
 - Key issues for new Governor
 - Early childhood education/preschool
 - Healthcare
 - Key appointments looming
 - Resources Agency- Wade Crowfoot
 - CalEPA- Jared Blumenfeld
 - DWR
 - SWRCB


Legislature

- 
- Two changes to SAWPA delegation:
 - ➔ James Ramos (D- Rancho Cucamonga) replaces Asm. Steinorth
 - ➔ Cottie Petrie-Norris (D- Costa Mesa) replaces Asm. Harper
 - New Republican leader elected
 - ➔ Marie Waldron (R-Escondido)
 - Represents Riverside & San Diego
 - Two open Senate seats
 - ➔ Sierra foothills (Gaines seat)
 - ➔ Long Beach (Lara seat)
 - Rendon (Assembly) & Atkins (Senate) remain as house leaders
 - ➔ Assemblymember Eduardo Garcia (D-Coachella) remains chair of Water Parks and Wildlife
 - ➔ Senator Henry Stern (D-Canoga Park) new chair of Senate Natural Resources and Water

Key Issues for 2019


- 
- California Water Fix/DSC certification/delta issues
 - Newsom has indicated he is interested in exploring a “scaled back” one-tunnel approach
 - Unimpaired flows/Bay Delta Plan
 - Environmental water budget/rights
 - Elimination of ocean discharge
 - Wildfire financial responsibility and energy shutoffs
 - Continued implementation of the Human Right to Water Act

Human Right to Water Act Implementation

- 
- Human Right to Water Act (AB 685, 2012)
 - Low-Income Water Rate Assistance Program (AB 401, 2015)
 - Safe and Affordable Drinking Water Act proposed in 2017-2018
 - SWRCB and Governor Newsom both appear increasingly committed to establishing a comprehensive solution.
 - ➔ Sustainable long-term funding
 - ➔ Consolidation of unsustainable systems
 - ➔ Improving DAC systems
 - SWRCB recent release of funding options for low income water rate program
 - Newsom's 2019-2020 budget sets up financial mechanism for collecting "water user fee" & Gov travels to Central Valley to talk about drinking water

Human Right to Water Act

Imp.- How to Pay for it

- 
- \$600 million proposed for tiered rate payer assistance program.
 - Options under consideration:
 - ➔ Water user fee/Water Tax
 - ➔ Bottled Water Tax
 - ➔ General tax on high-income wage earners or businesses
 - ➔ General Fund

2019 Legislative Calendar

- January 7 – Legislature reconvened
- January 10 – Budget submitted by Governor
- February 22 – Bill introduction deadline
- Session continues through September 13



Strategies & Recommendations

- Increase SAWPA's presence in Sacramento
- Two advocacy trips per year to promote IRWM
- Local legislative meetings/ briefings
- Work with DWR to implement goals of CA Water Action Plan



Thank You



Questions?

SAWPA Building

SAWPA Commission

Item 7.C

January 15, 2019

SAWPA Building

Recommendation to Commission:

- Authorize the use of \$148,000 from the Building Reserve Fund to make various improvements to the SAWPA Building.

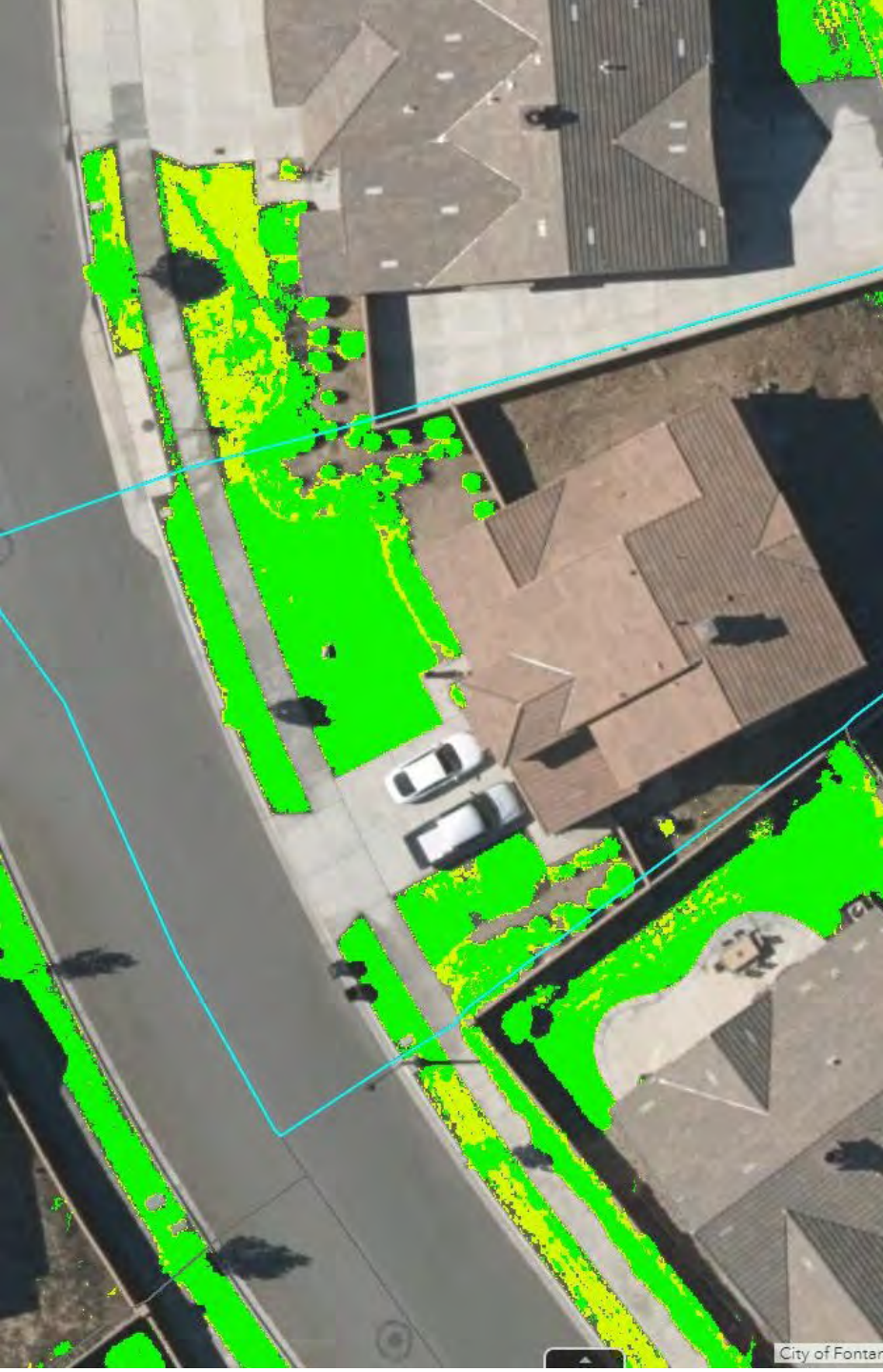
SAWPA Building

- Building constructed in 1992
 - Carpet replacement (common areas)
 - Board Room table restoration
 - Window re-sealing
 - Door handle replacement
 - Building restrooms
 - Board Room projection screen and SAWPA display
 - Board Room/OWOW Room electrical outlets
 - Parking lot
 - Purchase of emergency generators

SAWPA Building

Recommendation to Commission:

- Authorize the use of \$148,000 from the Building Reserve Fund to make various improvements to the SAWPA Building.



SAWPA

Prop 1 Grant Proposal

- ● ● Watershed-Wide Water Budget Development



RICK WHETSEL

SENIOR WATERSHED MANAGER

January 15, 2019



RECOMMENDATION

Authorize staff to submit the following Project Proposals for consideration for DWR Prop 1 IRWM Implementation Grant Program funding:

- Watershed-Wide Water Budget Development

SAWPA Prop 1 IRWM, Round 1 - Call for Projects

- Grant Program: Proposition 1, IRWM, Round 1
- Funds Available: \$22,000,000 to SAWPA
- Schedule:
 - January 22 – Applications Due to SAWPA
 - April 2019 – Applications Due to DWR
 - 2019 – Round 1 Grant Awards
 - 2020 - Project Implementation

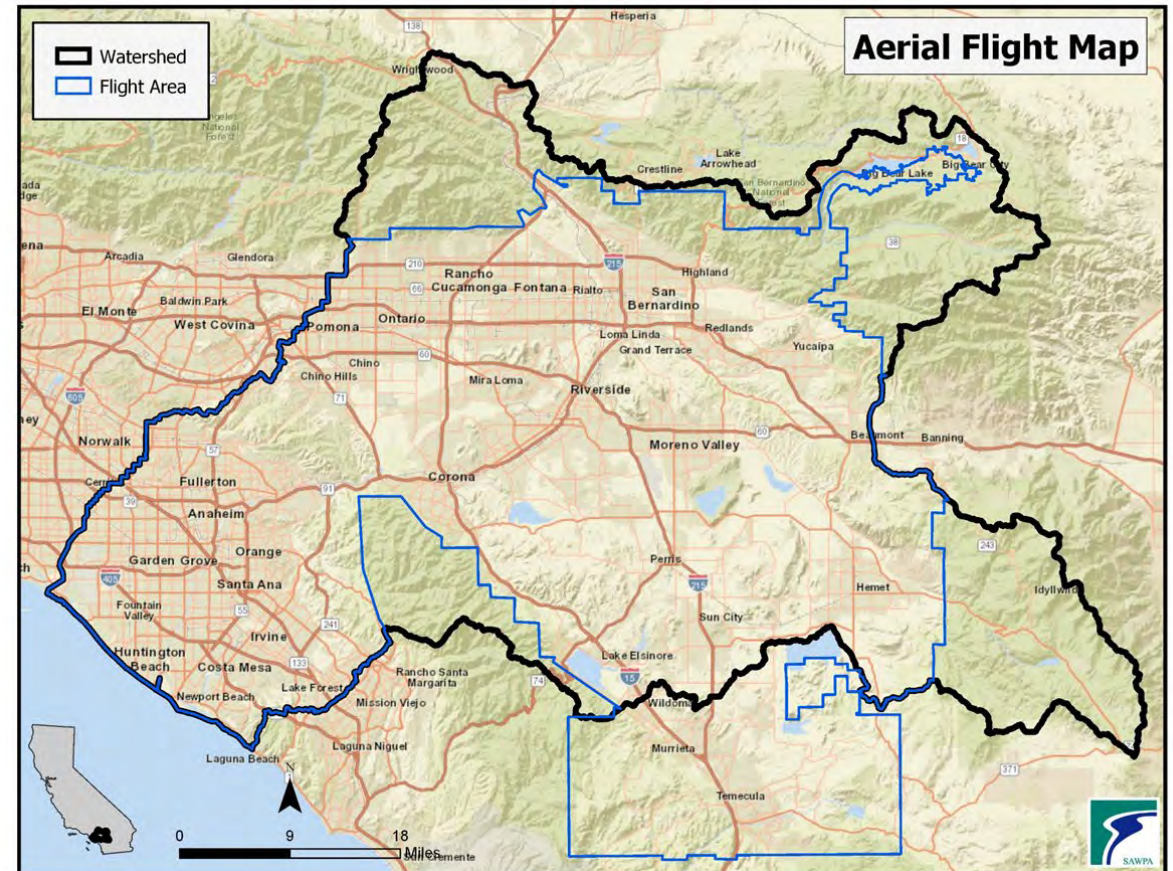


PROJECT DESCRIPTION

- Develop an Urban Landscape Assessment Tool to measure, classify, monitor, and report on landscape water demands for the Santa Ana River Watershed.
- Provide uniform methodology to accurately calculate landscape water demands at both a regional and agency scale.
- Enable agencies to develop state efficiency targets.
- Establish baseline for more sophisticated tools to assist agencies in tracking development patterns, improve water demand scenario planning, and inform demand management program investments.

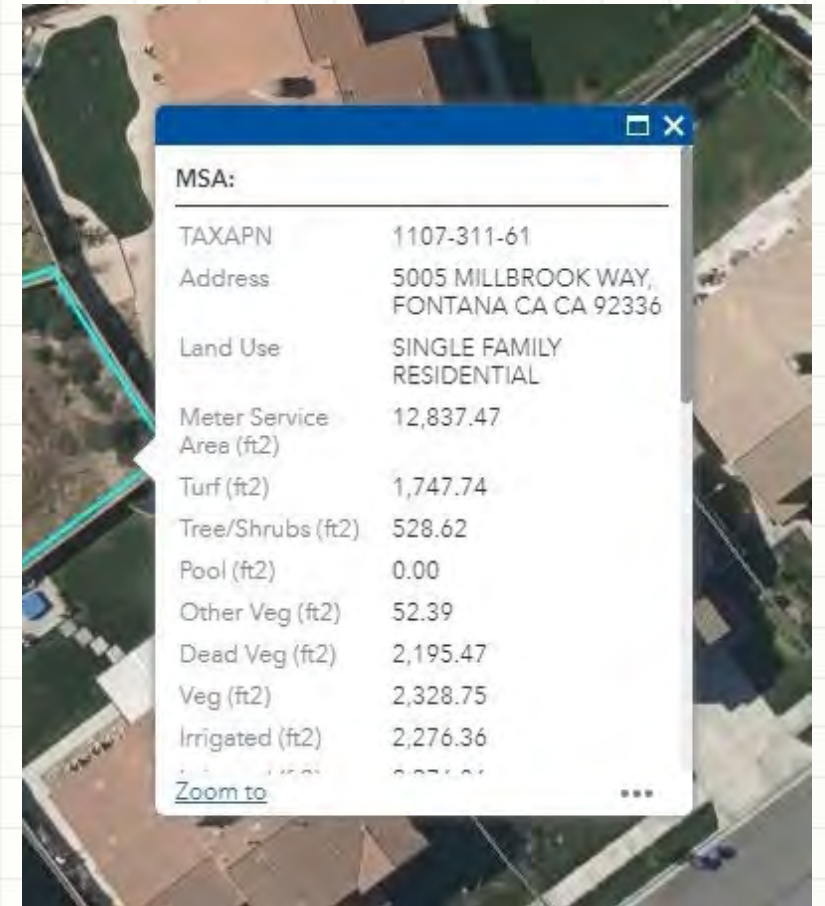
UPDATE IMAGERY

- Update to 2015 Imagery
- Area of interest:
 - Urbanized Santa Ana River Watershed
 - 2,600 mi² (1.5M parcels)
- Stakeholder workshop to evaluate various types and sources of imagery
- Address Lessons learned



LANDSCAPE ANALYSIS ENHANCEMENTS

- Project will reevaluate the Landuse Types with focus on the following:
 - Irrigated Landscape
 - Irrigable land
 - Hardscape



EXPAND TOOL FUNCTIONALITY

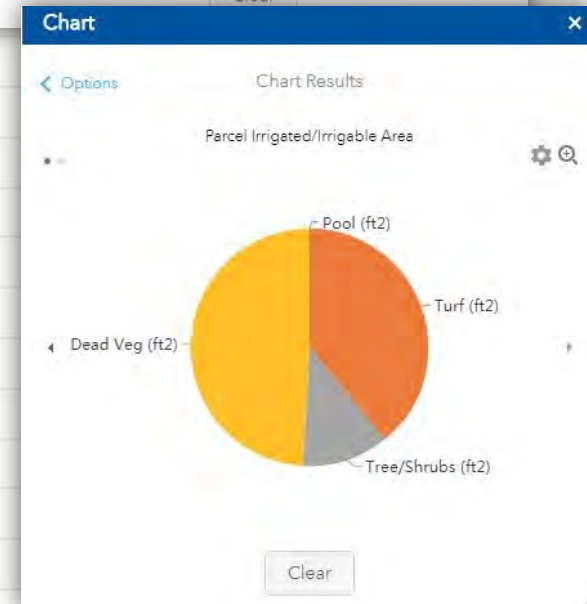
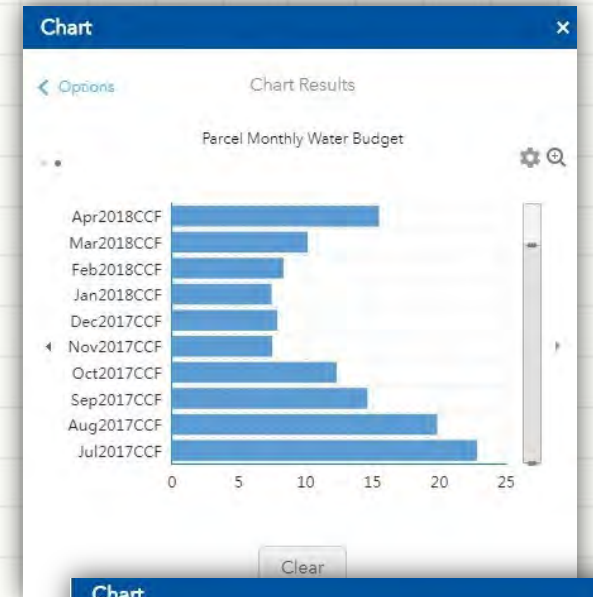
Additional:

Features / Data

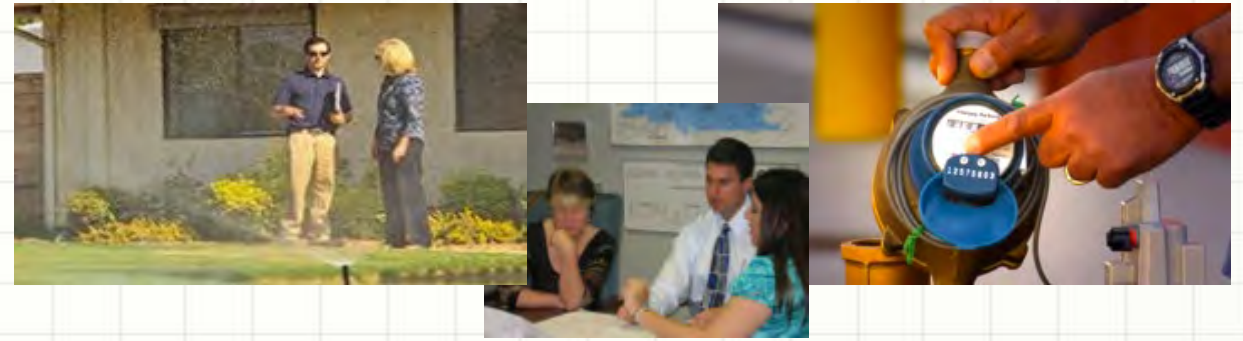
- Updated Parcel boundaries (modified)
- Additional ET Vegetation Classes
- Summary Budgets by Landuse Class
- Business Type

Capabilities / Functions

- Update/ Edit Parcel Landscape Data
- Detailed Agency Budgets
- Customer Email
- Customer Status Report
- Link Billing Records



PROJECT BENEFITS



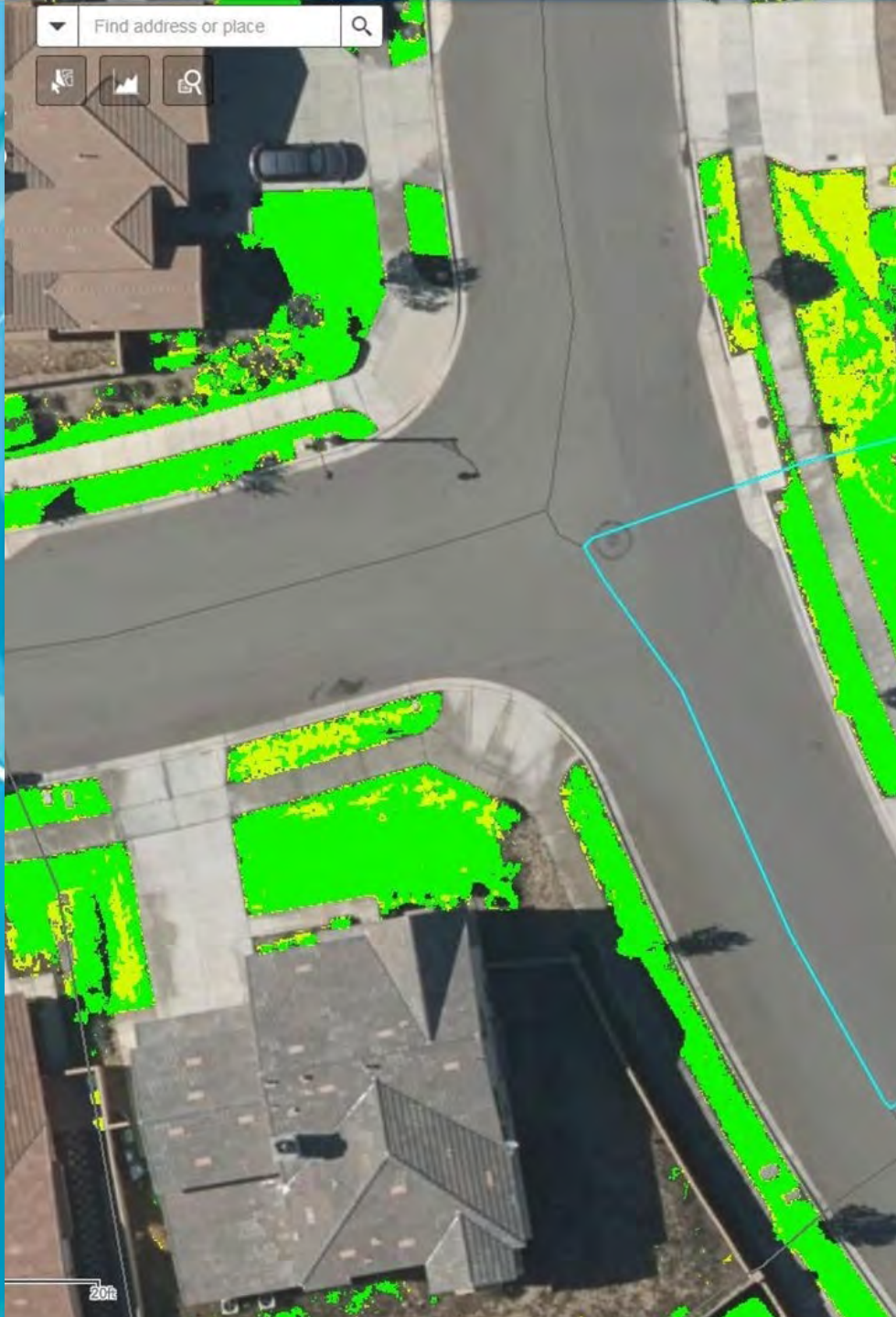
1. Assist over 70 retail agencies in complying with State regulations that require water agencies to adhere to agency-wide water budgets (per Senate Bill 606 and Assembly Bill 1668).
2. Support water resource planning and supply/demand forecasts.
3. Implement budget-based rates (also known as conservation-based rates).
4. Assist water agency customers and responding to billing inquiries.
5. Implement water use efficiency programs, like targeted campaigns, in order to determine inefficient water users.
6. Provide a resource to field staff who perform water audits.

GRANT APPLICATION

- Priority Funding Category: Employ New or Innovative Technology or Practices
- Project Type/Benefits: Decision Support Tool / Water Conservation
- SAWPA working collaboratively with member agencies and MWDOC through PA 22 Committee
- Grant Request: \$500,000
- Grant Match: \$500,000 from SAWPA member agencies and MWDOC

- Other Potential Watershed-wide Projects including most or all SAWPA member agencies and MWDOC as partners:
 1. Comprehensive Landscape Program (Joe Berg, MWDOC)
 2. Accelerated Leak Detection and Meter Testing (Anna Garcia, EMWD)

Proposed watershed-wide water budget proposal may be combined with these two other watershed wide projects.



QUESTIONS

SAWPA

A blue fountain pen with a silver nib is positioned diagonally across a financial chart. The chart features a line graph with a blue line and a bar chart with blue bars. A magnifying glass is placed over the right side of the chart, focusing on the line graph. The background is a light blue gradient.

**FYE 2020 and 2021
Goals and Objectives**

Agenda

A close-up photograph of a silver fountain pen nib resting on a document. The document features a line graph with a blue line and handwritten text in blue ink. The background is a dark blue gradient.

1

Agency Vision

2

Brine Line Goals and Objectives

3

OWOW Goals and Objectives

4

Roundtables Goals and Objectives

5

Agency Operations Goals and Objectives



The Vision

- Create a sustainable Santa Ana River Watershed that is drought-proofed, salt balanced and supports economic and environmental vitality in the year 2030
- Lead the State in Regional Planning
- Provide leadership in creating innovative and integrated solutions to the challenges facing the watershed



Achieving the Vision

Brine Line

OWOW

Roundtables

The three major cornerstones of SAWPA's foundation; Brine Line, OWOW and the Roundtables, are essential to achieving SAWPA's vision.



The Cornerstones

Brine Line

Designed as the primary method of salt export for the watershed. Removing salt by means of the Brine Line system allows the Watershed to work toward achieving salt balance – a key Watershed goal and indicator of sustainability.

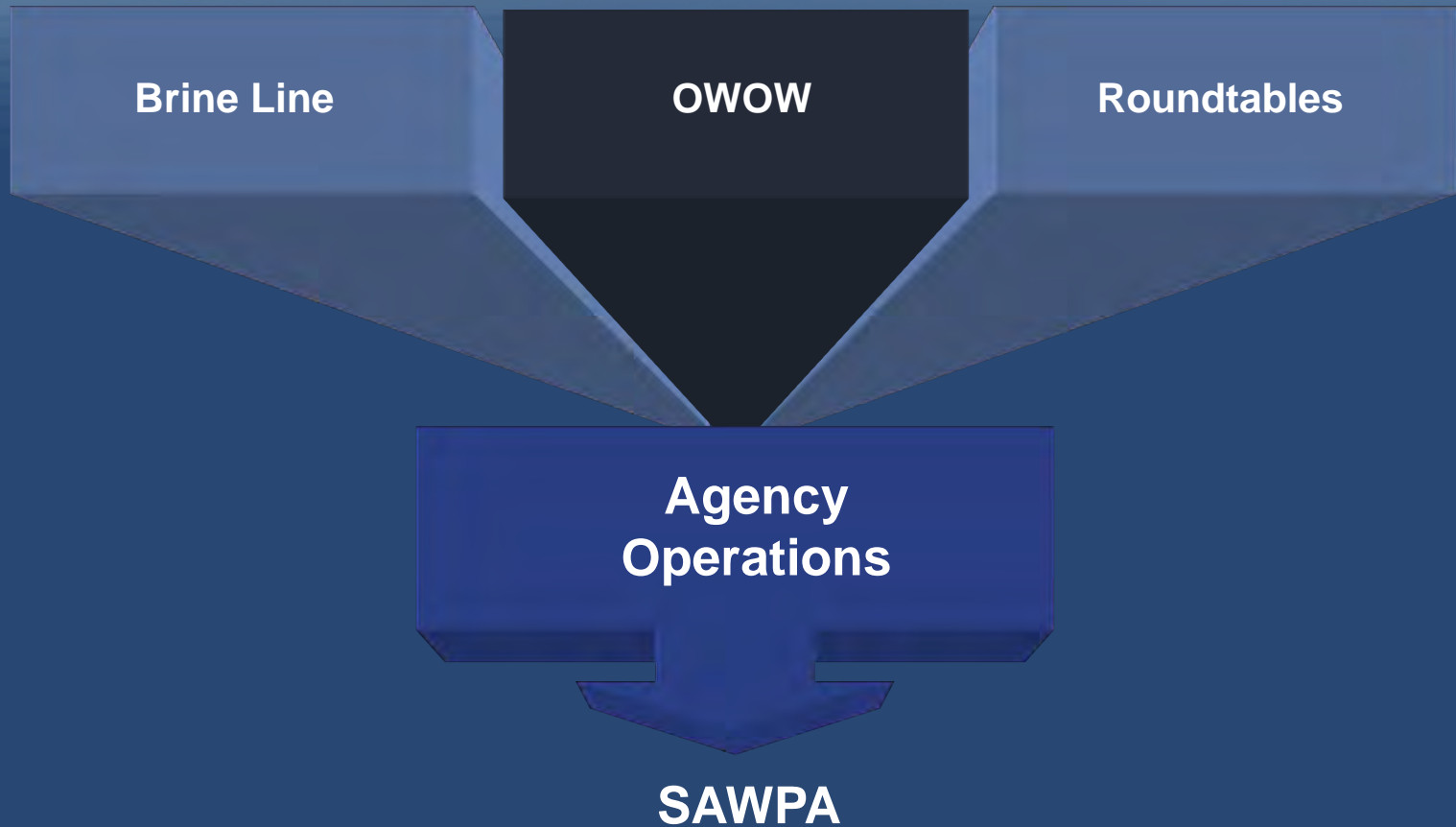
OWOW

Bringing together water agency officials, government leaders, environmentalists, and businesses to work in an open, collaborative and coordinated effort toward finding solutions to the challenges facing the region's water supply.

Roundtables

A forum that brings together many agencies and organizations to address and solve a multiplicity of problems through integration and innovation. SAWPA serves as the administrator/facilitator in these many efforts.

The Cornerstones





Brine Line Purpose and Objectives

- Support the achievement of a long-term watershed-wide salinity balance through:
 - Water quality maintenance, enhancement, and protection in the Santa Ana River and groundwater basins
 - Water resources management, including imported water recharge
 - Disposal of emergency discharges from local wastewater treatment plants
 - Supporting industries limited by salt in their effluent, including energy production facilities
 - Providing existing and future public agencies and private industry with a cost-effective salinity management option



OWOW Purpose and Objectives

- Fulfill SAWPA's role as a CA IRWM Program Regional Water Management Group and provide for a process of determining IRWM funding that meets statutory requirements
- Prepare a credible integrated watershed-wide water management plan that is updated regularly, meets regional needs and DWR IRWM plan requirements, and provides safe, clean, reliable and affordable water for the SAR Watershed
- Facilitate the discovery and development of new watershed solutions
- Maximize funding opportunities and policy influence by uniting efforts watershed wide

A close-up photograph of a silver fountain pen nib resting on a document. The document features a line graph with a red line and some text, including the word 'WATER' and 'SAR'. The background is a dark blue gradient.

Roundtables Purpose and Objectives

- Create value by building relationships among regulators, SAWPA members, regulated parties that allow for economies of scale, reduced costs, or increased benefits in addressing water related issues
- Provide regional capacity and neutral venue for supporting multi-agency forum(s) to address the water resources challenges in the SAR Watershed
- Assist in the establishment and on-going facilitation of stakeholder processes to address watershed-specific issues.

A close-up photograph of a silver fountain pen nib resting on a document. The document features a line graph with a red line and some handwritten text in blue ink. The background is a soft, out-of-focus blue.

Agency Operations

- Refine staff capability as regional resources
- Effective and efficient operations
- Legislative advocacy
- Increase digital presence of SAWPA
- Data acquisition, organization, management
- Maximize grant opportunities
- Grant management

A fountain pen with a silver nib is positioned diagonally across the top of the slide. Below it, a document is visible, featuring a line graph with a red line and some text. A magnifying glass is partially visible on the right side of the document. The background is a dark blue gradient.

Brine Line Goals & Objectives - Operations

- Marketing – update plan, brochure, and implement program
- Implement capacity lease pool program
 - Develop discharger lease agreement
- Pretreatment Program
 - Update program documents with comments from OCSD and finalize
 - Conduct audit of SAWPA program
 - Implement program efficiencies
 - Permit templates
 - Collection station MOU
 - Establish City of Beaumont as a contract agency and provide oversight for implementation of Pretreatment Program
 - Increase staff capability to perform roles and responsibilities due to expanded program and promote training and mentoring for succession planning



Brine Line Goals & Objectives - Operations

- Complete and implement new business plan
- Make adjustments for new dischargers and transfer of California Institution for Women (CIW) flow
- Continue to maintain/grow partnership with OCSD
 - Joint Operations Committee
- Continue O&M Programs
 - Line cleaning and inspection
 - Solids control
 - Scale management
 - A/V valves – frequent maintenance, containment, alarm
- Update new financial model to determine Brine Line rates
 - Estimate system value and conduct asset criticality assessment
- Complete the 5-year update of the Sewer System Management Plan

A close-up photograph of a silver fountain pen nib resting on a document. The document features a line graph with a red line and some text, including the word 'MAY'. A magnifying glass is visible in the upper right corner, focusing on the document. The background is a dark blue gradient.

Brine Line Goals & Objectives - Operations

- Safety - update/refine safety plan and training
- Increase in-house field staff capability/equipment reducing reliance on contractors, increasing efficiency, reducing costs
- Add remote flow monitoring devices
- Maintain and enhance Brine Line Operations Center
- Continue coordination with outside contractors working near the Brine Line to reduce risk of SSO's
- Evaluate impacts of technology on Brine Line operations
 - Improved RO efficiency
 - Zero liquid discharge
 - Indirect potable reuse

A close-up photograph of a silver fountain pen nib resting on a document. The document features a line graph with a red line and some handwritten text in blue ink. The background is a soft, out-of-focus blue.

Brine Line Goals & Objectives - Capital Projects

- Reach 4D maintenance access structure modifications
- Coordinate with Corps on new Alcoa Dike impacts and complete protection of Reach 4B
- Continue capital repairs based on system wide pipe and access structure inspections
- Rock removal in SAR near abandoned SARI (Orange County)



OWOW Goals & Objectives

- Fund 373 OWOW Plan
- Fund 370-01 General Basin Planning
- Fund 370-02 USBR Partnership Studies
- Fund 398 Proposition 1 – Disadvantaged Communities Involvement Program
- Fund 130–145 Proposition 84 - Grant Administration
- Fund 150 Proposition 1 – Grant Administration
- Fund 504-301 Proposition 84 - Drought Round Capital Projects
 - PA22 Committee
- Fund 504-401 Proposition 84 - 2015 Round SARCCUP
 - PA23 Committee
- Fund 505 – Proposition 1 Grant Projects



Fund 373 OWOW Plan

Project Manager: Mike Antos

Funding Source: Member Agency Contributions and Proposition 1 - IRWM Planning Grant

- Fulfill SAWPA's role as a state-approved Regional Water Management Group in the Integrated Regional Water Management Program
- Actively participate with the Roundtable of Regions and administer the Network Coordinator consultant position
- Provide watershed coordination to support implementation of the OWOW Plan Update 2018
- Conduct an effective Call for Projects Seeking Grants for Proposition 1 Round 2 Implementation (2021)



Fund 370-01 General Basin Planning

Project Manager: Mark Norton

Funding Source: Member Agency Contributions

- Conduct planning activities that focus on inter-agency coordination and cooperation, integration within the member agencies and external organizations
- Coordinate with Regional Board staff (monthly) and attend Regional Board meetings (quarterly)
- Prepare any new grant applications to support SAWPA mission
- Santa Ana River Trail Technical Advisory Committee
- Represent SAWPA and region in addressing salinity issues through participation in So Cal Salinity Coalition (SCSC)
- Oversee implementation of impact monitoring homeless sites in Upper Santa Ana River Watershed



Fund 370-02 USBR Partnership Studies

Project Manager: Mark Norton

Funding Source: Member Agency Contributions, USBR Grant funding

- Coordination and preparation of possible grant funding partnership and regional studies with the US Bureau of Reclamation programs such as WaterSmart and Basin Studies updates
- Monitor and, if deemed necessary and beneficial, develop and prepare Reclamation grant applications, contract administration
- Administer any successful grant programs with Reclamation staff
- Conduct coordination with Reclamation staff on joint programs of merit and benefit to the watershed



Fund 398 Proposition 1 – IRWM Disadvantaged Communities Involvement Program

Project Manager: Mike Antos

Funding Source: Proposition 1 Grant Funding

- Contract Administration of DWR Proposition 1 - Disadvantaged Community Involvement Program Grant
- Implement the Disadvantaged Communities Involvement Program
 - Finalize and distribute Community Water Ethnography of the Santa Ana Watershed report
 - Finalize and distribute Community Engagement Best Practices report
 - Complete education and training programs across watershed
 - Identify technical assistance needs and opportunities
 - Pursue a one-year extension of the DWR grant to support effective use of the entire Technical Assistance budget
 - Finalize grant agreement deliverables and close program (2020 or 2021)



Funds 130-145 Proposition 84 – Grant Administration

Project Manager: David Ruhl

Funding Source: Proposition 84 Grant Funding

- Continue grant administration for Proposition 84
 - Round 1
 - Round 2
 - Drought Round
 - 2015 Round

A close-up photograph of a silver fountain pen nib resting on a document. The document features a line graph with a red line and some handwritten text in blue ink. The background is a dark blue gradient.

Fund 150 Proposition 1 – Grant Administration

Project Manager: David Ruhl

Funding Source: Proposition 84 Grant Funding

- Administer the Proposition 1 Grant Program

A fountain pen with a silver nib is positioned over a document. The document features a line graph with a red line and some text, including the word 'MAY' and 'APR'. A magnifying glass is visible in the upper right corner, focusing on the document. The background is a dark blue gradient.

Fund 504-301 Proposition 84 - Drought Round Projects

Project Manager: Ian Achimore

Funding Source: Proposition 84 Grant Funding

- Administer PA 22 Committee and Advisory Workgroup
- Complete Proposition 84 Drought Grant Program
 - Complete implementation of the Esri Customer Parcel Water Budget Tool and market to interested agencies
 - Support City of Hemet with their rate study and possible adoption of conservation-based water rate structure
 - Provide final report to PA22 documenting the success of drought program
 - Finalize grant agreement deliverables and close Proposition 84 Drought Grant Program



Fund 504-401 Proposition 84 - Final Round Projects

Project Manager: Ian Achimore

Funding Source: Proposition 84 Grant Funding

- Administer PA23 Committee
- Provide technical assistance for conservation-based water rates adoption
- Implement a drought tolerant landscape maintenance and training program
- Implement SARCCUP
- Complete SARCCUP water conservation tasks
 - Smartscape
 - Budget based water rates

A fountain pen with a silver nib is positioned over a document. The document features a line graph with a red line and some text, including "MAY" and "APR". A magnifying glass is visible in the upper right corner, focusing on the document. The background is a dark blue gradient.

Fund 505 Proposition 1 – Capital Projects

Project Manager: Ian Achimore

Funding Source: Proposition 1 Grant Funding

- Administer grant program
- Implement new aerial survey and analysis using Esri Customer Parcel Water Budget Tool and market it to interested water agencies
- Implement sustainable landscaping in the SAR Watershed as a component of the watershed wide landscape transformation project
- Implement a study with DWR to help retail water agencies comply with new conservation legislation AB 1668 and SB 606



Roundtables Goals & Objectives

- Fund 374 Basin Monitoring Program TF
- Fund 381 SAR Fish Conservation TF
- Fund 384-01 MSAR TMDL TF
- Fund 386 RWQ Monitoring TF
- Fund 387 Arundo Management & Habitat Restoration
- Fund 392 Emerging Constituents TF



Fund 374 Basin Monitoring Program TF

Project Manager: Mark Norton

Funding Source: Other Agency and Member Agency Contributions

- Administer all defined responsibilities and activities under the Regional Board Basin Plan as defined in the Basin Monitoring Program Task Force agreement.
- Provide support incorporating updated SAR Wasteload Allocation Model Analysis into Basin Plan as Amendment (2020)
- Prepare SAR Annual Water Quality Update
- Provide support for the regulatory approval process to adopt BPA revising the Wasteload Allocation
- Develop and implement succession plan for Risk Sciences (2020)
- Review EPA's final guidance for developing water quality criteria for conductivity (2021)



Fund 386 Regional Water Quality Monitoring TF

Project Manager: Rick Whetsel

Funding Source: Other Agency Contributions

- Administer Regional Water Quality Monitoring Task Force
- Implement the 2019 and 2020 SAR Bacteria Monitoring Program
 - Monitoring and surveillance requirements of the 2012 adopted Basin Plan Amendment
 - Conduct sampling to support implementation of MSAR Bacteria Indicator TMDL
- Review and revise the Regional Bacteria Monitoring Plan (2020)
- Recalculate Antidegradation Target for bacteria to be consistent with State Board's 303(d) Listing Policy (2020)
- Amend Basin Plan to address the recalculation of Antidegradation Targets for bacteria (2021)
- Implement succession plan for regulatory compliance expert (Risk Sciences)



Fund 381 Santa Ana River Fish Conservation TF

Project Manager: Ian Achimore

Funding Source: Other Agency and Member Agency Contributions, SEP Funds, Other Grant Funding

- Administer SAR Fish Conservation Task Force
- Serve as clearinghouse and coordination body on Santa Ana sucker habitat restoration i.e. Upper SAR Habitat Management Plan
- Maintenance of the Habitat and Beneficial Use Enhancement Project
- Design and construct a second phase of the Habitat and Beneficial Use Enhancement Project
- Pursue grants or partnership for habitat and beneficial use projects
- Gather habitat data based on Santa Ana Riverwalk monitoring
- Support permit compliance for OCWD



Fund 384-01 Middle Santa Ana River TMDL TF

Project Manager: Rick Whetsel

Funding Source: Other Agency Contributions

- Administer MSAR TMDL Task Force
- Conduct 2019 – 20 and 2020 – 21 Annual Watershed-wide TMDL compliance monitoring
- Prepare 2019 Triennial Progress Report
- Conduct source evaluation studies and implement projects to support TF
- Evaluate and quantify dry weather flows of the MSAR and all major tributaries (2020)



Fund 384-01 Middle Santa Ana River TMDL TF

- Update bacteria mass balance analysis (2020)
- Revise and update MSAR TMDLs
- Identify appropriate regulatory strategies to address other 303(d) listed waterbodies (2020)
- Develop formal criteria to identify and quantify uncontrollable sources of bacteria
- Support comprehensive bacteria reduction plan (CBRP) implementation



Fund 387 Arundo Mgmt & Habitat Restoration

Project Manager: Ian Achimore

Funding Source: Mitigation Credit Sales (Proposition 13)

- Administer Arundo Mitigation Bank
- Assess arundo removal progress in watershed through coordination with ACOE and SARCCUP
- Plan and Implement Arundo Removal and Habitat Restoration Projects



Fund 392 Emerging Constituents TF

Project Manager: Mark Norton

Funding Source: Other Agency Contributions, IEUA and EMWD Contributions

- Administer all defined responsibilities and activities under the Emerging Constituent Program TF agreement including EC data collection, data management, and communication and outreach on the safety of tap water.
- Implement new Emerging Constituents sampling program with focus on PFOA and PFOS
- Monitor State Board studies and possible further monitoring requirements for ecosystem impacts from ECs
- Administer “Your So Cal Tap Water” and other social media tools



Fund 477 LESJWA JPA Administration

Project Manager: Mark Norton (JPA)
Rick Whetsel (TMDL TF)

Funding Source: Reimbursement from LESJWA and minimal member agency contributions

- Administer the LESJWA JPA – serve as authority administrator for LESJWA including all defined responsibilities and activities under the LESJWA JPA and Business Plan
 - Bi-monthly meetings
- Administer the Lake Elsinore & Canyon Lake Nutrient TMDL Task Force
 - Monthly meetings



Agency Operations Goals & Objectives

- Update strategic plan and implement goals and objectives from the plan
- Improve operation efficiency and effectiveness
- Continue lobbying efforts
- Provide administrative and technology support to Engineering and Planning projects
- Upgrade technology in SAWPA meeting rooms
- Operate SAWPA hardware, software, and network application needs in an efficient and reliable manner
- Continue to maximize GIS data investments by providing GIS Web Apps and provide input to local and State initiatives

A close-up photograph of a silver fountain pen nib resting on a document. The document features a line graph with a red line and some handwritten text in blue ink. The background is a soft, out-of-focus blue.

Agency Operations Goals & Objectives

- GASB 45 and 68 Compliance
 - Actuarial Valuation (FYE 2021)
 - CalPERS Unfunded Liability Disclosure
- Submit Budget and CAFR for GFOA Award Program
- Increase investment earnings through use of asset management firm
- Annual review and update of Retention and Destruction of Agency Records Policy and accompanying procedures as necessary

A close-up photograph of a silver fountain pen nib resting on a document. The document features a line graph with a red line and some text, including the word 'MAY' and 'UR'. A magnifying glass is partially visible in the upper right corner. The background is a dark blue gradient.

Agency Operations Goals & Objectives

- Continue agency-wide transparency commitment and open governance policies applicable to Special District Leadership Foundation (SDLF) transparency certification
- Continue risk transfer protocol review in accordance with Joint Powers Insurance Authority (JPIA) standards
- Review and update policies, procedures and handbooks in adherence with recently enacted legislation, as applicable
- Review and update policies and procedures relating to Conflict of Interest law and FPPC filings, as applicable

A close-up photograph of a silver fountain pen nib resting on a document. The document features a line graph with a red line and some text, including the word 'MAY' and 'UR'. A magnifying glass is partially visible in the upper right corner. The background is a dark blue gradient.

Agency Operations Goals & Objectives

- Update records management policies in accordance with recently enacted legislation
- Contracts - update contract template; review and revise workflow procedures
- Policies – continuing analysis of current policies to ensure continuity and efficiency; revise as warranted



Questions?

Risk and Rewards Analysis for Aerial Imagery Partnership Study with the Department of Water Resources



Mark Norton
Water Resources & Planning Manager
Santa Ana Watershed Project Authority
January 15, 2018

DWR and New Water Use Efficiency Legislation



- DWR is the lead for technical assistance related to urban water use targets per new water conservation legislation (AB 1668 and SB 606)
- PA 22 Committee recommended SAWPA staff connect with DWR Water Use Efficiency Program Manager Peter Brostrom and share Drought Grant tools,
- SAWPA met with Brostrom twice and he recommended a study SAWPA can manage.

Bostrom's Recommended Study Scope

- SAWPA ensures approximately three retailers use the aerial imagery data via the ESRI Customer Parcel Water Budget Tool and upload their billing data to compare customer budgets to the volume of water used per customer.
- By involving the retail agency partners, DWR would be interested in knowing:
 - How many customers are over budget,
 - How many customers are under budget, and
 - What's the most effective way to let customers know they are over budget?





DWR's Needs for this Study

- DWR wants to ensure aerial imagery data can be a tool for retail water agencies, rather than just a mandated water budget.
- DWR wants to understand a major challenge for water users related to the new legislation - comparing area measurement data (outdoor water budgets) to billing data (customer water use).
- DWR wants to understand:
 - Are a marginal group of customers in a given service area driving an agency's high water use, and
 - How difficult is it to change the habits of that marginal group?

PA 22 Committee's October Meeting Request



- PA 22 memo included risks vs. rewards analysis.
- SAWPA staff discussed this with member agencies staff and they suggested the following:
 - Focus on just dedicated landscape meters (new legislation requires State to develop standards for this customer class).
 - Less of a need for residential focus:
 - Residential budgets easier to create and gains in efficiency will not result in as much volumetric savings compared to CII
- PA 22 Committee expressed concerns with CII focus without confirmation that water savings was higher than residential.

Possible Win-Win for Retail Water Agencies

- By 11/2023 retailers will need to estimate the size of their meter service areas for dedicated landscape customers so they can calculate their total water use objective (target) for their retail service area.

Water Use Objective is sum of:	Indoor residential	Outdoor residential	Outdoor dedicated landscape	Estimated efficient water losses
---------------------------------------	--------------------	---------------------	-----------------------------	----------------------------------

Outdoor dedicated landscape meter usage objective =
Irrigable area (from imagery) x (Reference ET x **ET Adjustment Factor**)


State Standard

Risks



- The State being interested in water agencies collecting new categories of data.
- The State developing state regulatory standards, or possibly legislation, that are more stringent than what the majority of urban water agencies can realistically achieve.
- The State describing the data out-of-context, thus reflecting a poor image of the three retail agencies.

Rewards



- A thorough demonstration that many urban water agencies are have difficulty in matching meter data to landscape data.
- The need to develop more variance categories giving urban water agencies additional flexibility in meeting the new water conservation legislation's water budget targets.
- Our region taking a leadership role related to water use efficiency state policy and aerial imagery.
- Helping us refine imagery collection and related water use efficiency tools.

Risks vs. Rewards



- The risks and rewards have different weights depending on perspective of the member agencies.
- PA 22 Committee felt that due to risks cited, policy direction on whether SAWPA should proceed with study scoping with DWR was needed from SAWPA Commission
 - If supported, SAWPA will meet with Peter Brostrom of DWR on budget and scope development
 - If not supported, SAWPA will inform Peter Brostrom