

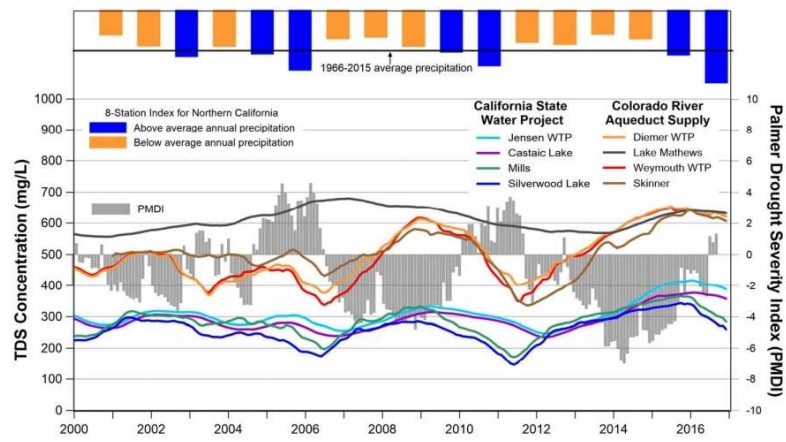
**Figure 10. Modified Palmer Drought Severity Index and Source TDS, EMWD and IEUA**

Jan. 8, 2019

2

2

P:\\_DB17-1179\SCSC Tech Memo 3-18\Figures\Word\Fig09\_FDSI.doc



Sources: MWDSC (2017), NOAA (2017), and DWR (2018)

Figure 9



Daniel B. Stephens & Associates, Inc.  
3/29/18

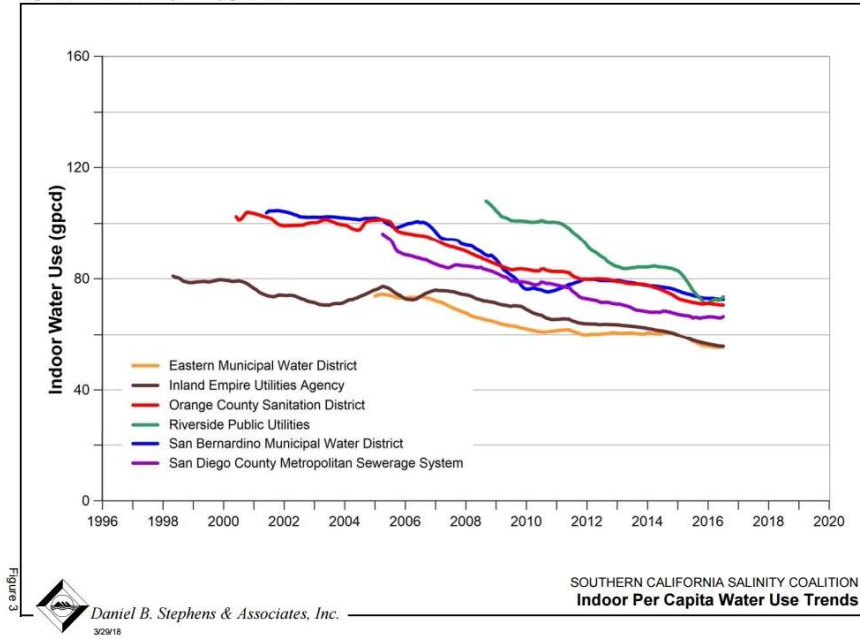
SOUTHERN CALIFORNIA SALINITY COALITION  
Surface Supply Water TDS Concentration and  
Palmer Drought Severity Index for California

Jan. 8, 2019

3

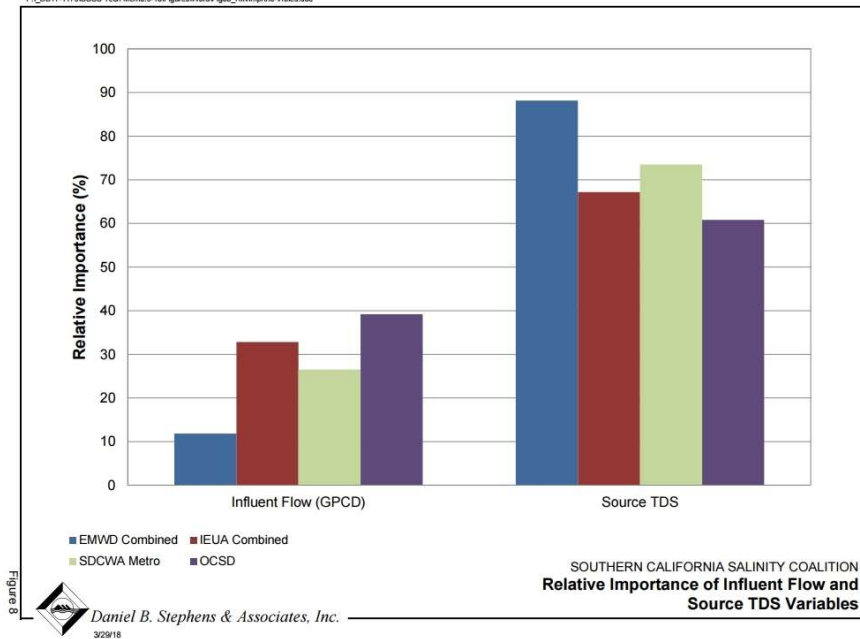
3

P:\\_DB17-1179\SCSC Tech Memo 3-18\Figures\Word\Fig03\_Indoor GPCD.doc



4

P:\\_DB17-1179\SCSC Tech Memo 3-18\Figures\Word\Fig08\_Relative Importance-V/iles.doc



5

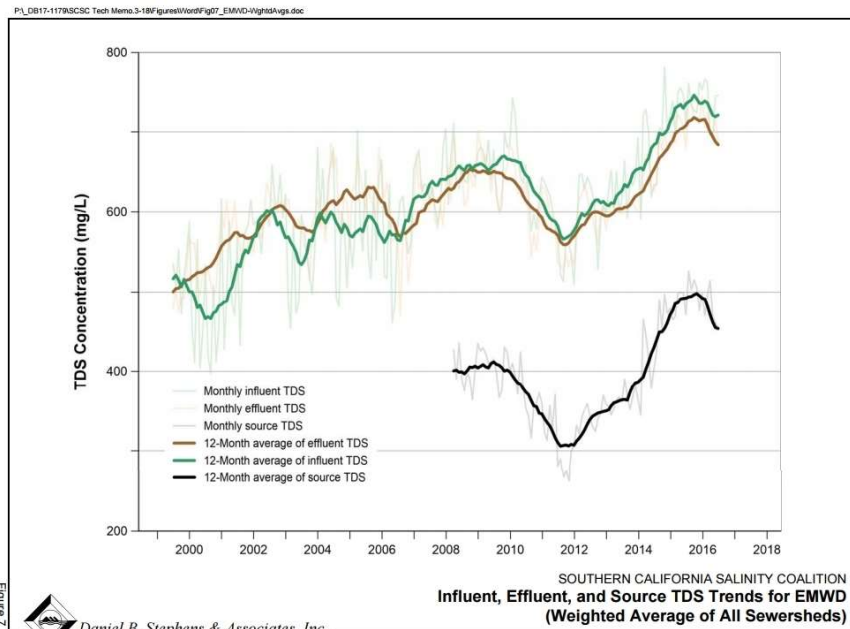


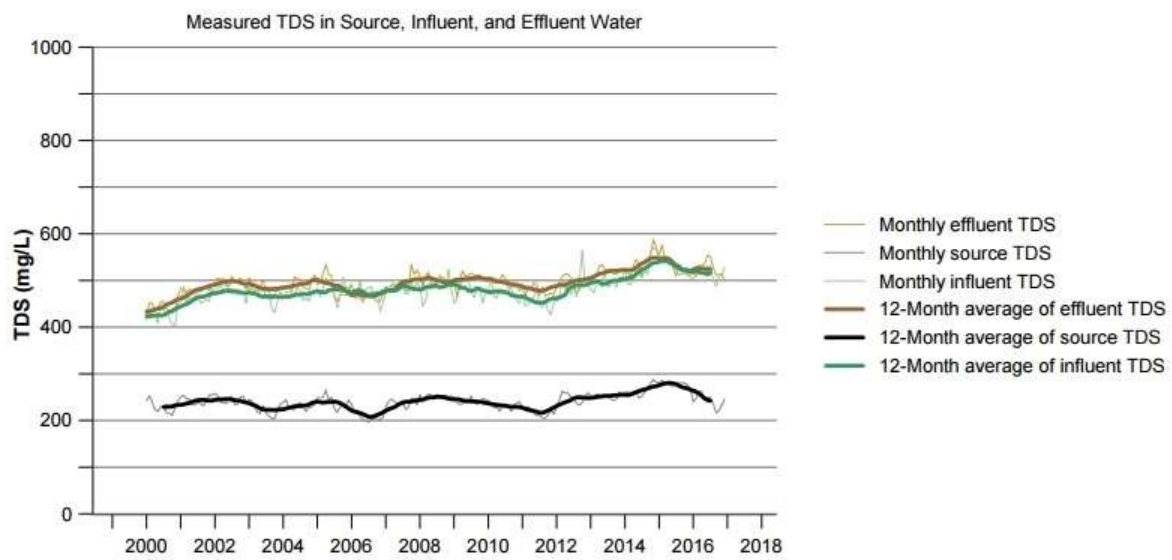
Figure 7

Daniel B. Stephens & Associates, Inc.  
3/29/18

Jan. 8, 2019

6

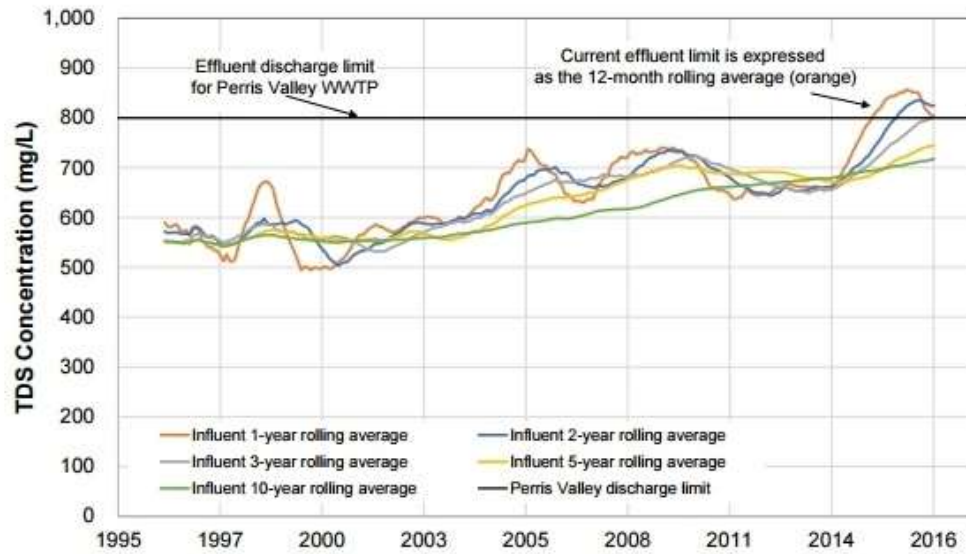
6



Jan. 8, 2019

7

7

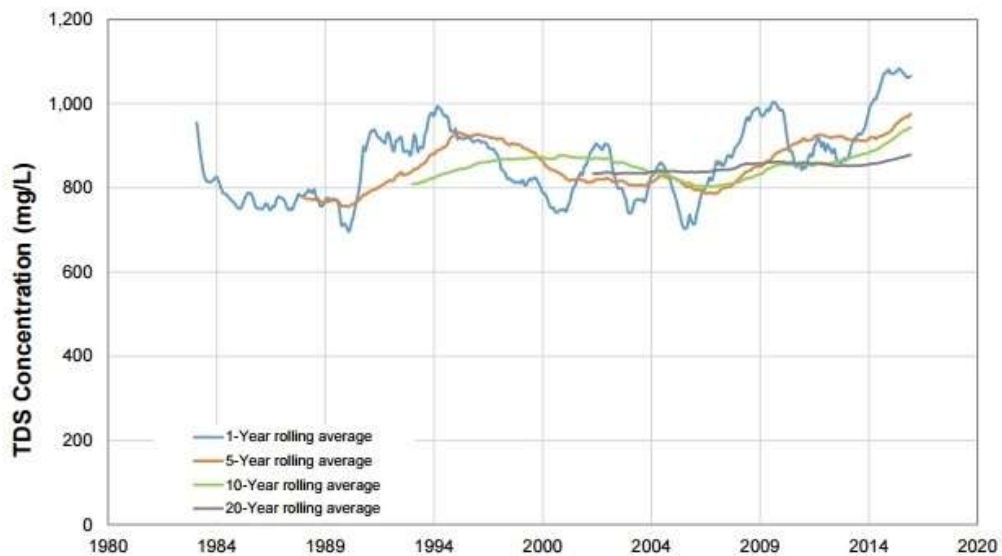


**Figure 12. Perris Valley WWTP Effluent TDS Using Varied Rolling Averages**

Jan. 8, 2019

8

8



**Figure 13. La Cañada WWTP Effluent TDS Using Varied Rolling Averages**

Jan. 8, 2019

9

9

## Inconsistent Averaging Periods

- Groundwater Objectives = 20 years
- Wasteload Allocation = 10 years (driest)
- Surface Water Objective for SAR-Reach 2 = 5 years
- NPDES Permits = 1 year (12 month rolling average)

Jan. 8, 2019

10

10

## Drought Policy Options

- Temporary Conditional Variance/Exception
- Dual Effluent Limits: Normal and Drought Conditions
- Re-calculate Annual Average by Adjusting for Conservation Effect
- Increase Averaging Period to be Consistent w/ Wasteload Allocation
- Establish an Approved Offset Program:
  - Credits earned with desalter projects
  - Credits earned by being UNDER the effluent limits
  - Credits earned by increasing low-TDS stormwater recharge

Jan. 8, 2019

11

11