

One Water One Watershed Plan Update 2018

Moving forward together



Public Review
11/19 – 12/14, 2018

OWOW Plan Update 2018

- **28** month effort to update the OWOW 2.0 Plan
- Involving
 - Over **100** authors
 - Over **100** collaborative meetings
- Resulting
 - **Six** goals for achieving a sustainable watershed
- Over **100** recommended management and policy strategies
- ~**400** pages (including appendices)
- Including partnerships with
 - Many agencies, non-profits, students, community members
 - Department of Water Resources
 - U.S. Bureau of Reclamation

Executive Summary & TOC

EXECUTIVE SUMMARY

This One Water One Watershed (OWOW) Plan Update 2018 is the Integrated Regional Water Management (IRWM) Plan for the Santa Ana River Watershed (watershed). The OWOW Plan Update 2018 was written by and for stakeholders throughout the watershed. This plan considers the challenges and opportunities facing the entire watershed area of the Santa Ana Funding Region within the California IRWM Program. By inviting together stakeholders from all subregions, political jurisdictions, water agencies, non-governmental organizations, businesses, and the public, this OWOW Plan Update 2018 addresses all types of water as a single resource, inextricably linked to people, the land, and nature.

The One Water One Watershed Plan Update 2018 describes how collaborative watershed planning, water and land management, and project implementation supports improved sustainability, resilience, and quality of life throughout the Santa Ana River Watershed through 2040.

This plan is built on the strong foundations laid by the OWOW Plan, adopted in 2010, and the OWOW 2.0 Plan, adopted in 2014. These two earlier efforts were lauded within the watershed, across California, and the country. The OWOW 2.0 Plan received awards from planners, engineers, and business leaders for its good governance and stakeholder-led process.

The OWOW Plan Update 2018 was begun in July 2016 with a meeting of the OWOW Steering Committee. At that meeting, the Committee approved efforts to secure a planning grant from the state in support of the update process and adopted a policy document that described how projects can be included in the OWOW Program and made eligible for the expected implementation grants.

In the 28 months that followed, the OWOW 2.0 Plan was reconsidered in light of the significant changes impacting the watershed since early 2014. In those years the fiscal recovery began to be felt in portions of the watershed, and the State of California went through one of its most severe droughts on record. The communities of the watershed made strides to support conservation as a way of life in California, implementing widespread landscape retrofits and other conservation programs. Other significant investments were made throughout the watershed by agencies, cities, counties, and community members alike to make the watershed more resilient in response to uncertainty and more sustainable over the long term.

The OWOW Plan Update 2018 is subtitled "Moving Forward Together" to mirror the earlier plans, which focused on movement toward goals. Working together has been fundamental to the OWOW Program (and SAWPA) since the program's inception, and the OWOW Plan Update 2018 is built by the stakeholders for the stakeholders. "Moving Forward Together" also reflects the OWOW Program's commitment to ensuring that no one is left behind as progress is made.

TABLE OF CONTENTS

SECTION	PAGE NO.
ACRONYMS AND ABBREVIATIONS.....	ACR-1
EXECUTIVE SUMMARY	ES-1
1. INTRODUCTION TO ONE WATER, ONE WATERSHED	1
1.1. Overview	1
1.2. History of Santa Ana River Watershed Planning.....	3
1.2.1. OWOW Plan: Moving Toward Sustainability.....	4
1.2.2. OWOW 2.0 Plan: Moving into Implementation.....	6
1.2.3. OWOW Plan Update 2018: MOVING FORWARD TOGETHER.....	9
1.3. Integrated Local Water Planning.....	12
2. CRAFTING THE OWOW PLAN UPDATE 2018	16
2.1. Stakeholder Involvement and Outreach.....	16
2.1.1. The OWOW Community.....	16
2.1.2. The Message of OWOW.....	17
2.1.3. Pillar Workgroups.....	18
2.1.4. Engaged Stakeholders.....	18
2.1.5. Public Meetings, Conferences, and Presentations.....	31
2.1.6. Email Blasts and Social Media.....	31
2.1.7. SAWPA Website.....	32
2.2. Governance Structure.....	32
2.2.1. Evaluation of the Governance Structure.....	45
2.2.2. Planning Updates and Adoption.....	47
2.3. Collaboration, Coordination, and Integration.....	48
2.3.1. SAWPA as Watershed Coordinator.....	49
2.3.2. Overview of Governing Laws, Judgments, and Agreements.....	51
2.3.3. Collaborative Efforts with Areas Adjacent to or Overlapping the Watershed.....	51
3. OWOW VISION, GOALS, AND OBJECTIVES	52
3.1. Vision.....	52
3.1.1. Shared Understandings.....	52
3.1.2. Principles.....	53
3.2. Goals and Objectives.....	54
3.3. Assessing progress towards the Goals.....	54
3.4. Planning Targets.....	55
4. WATERSHED SETTING	57
4.1. Physical Setting.....	57
4.1.1. Climate.....	58

Next steps

- Public Comment Period
 - November 19 – December 14
- Response to comments and edits
- Final Plan before OWOW Steering Committee January 24
 - With Steering Committee recommendation, approval by SAWPA Commission will follow in February.
 - Including public notice of the plan update, and a public hearing

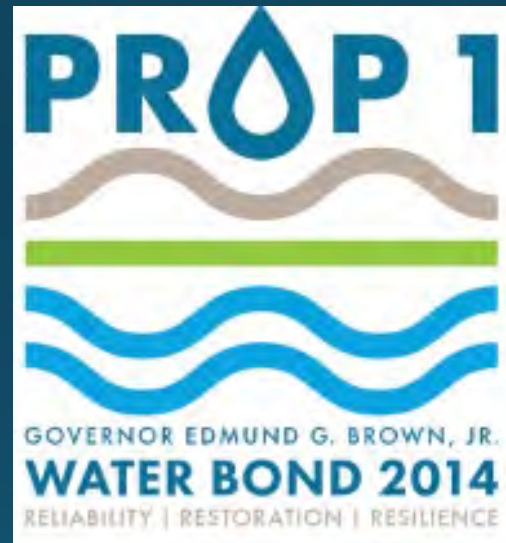


Recommendations



1. Receive and file this presentation about the Public Review Draft of the One Water One Watershed Plan Update 2018

Page Intentionally Blank



Draft Project
Solicitation
Package released
October 5, 2018

IRWM Implementation Grants

Timeline

- Public Comments due December 14, 2018
- Final PSP
- Identify location for pre-application workshop by Feb 1
- Pre-Application Workshop
 - DWR Comments 4 weeks after
- Grant Proposal
 - 8 weeks after DWR Comments

2018 Implementation Grant Proposal Solicitation Package

Integrated Regional Water Management
October 2018



CALIFORNIA NATURAL RESOURCES AGENCY
DEPARTMENT OF WATER RESOURCES
DIVISION OF
INTEGRATED REGIONAL WATER MANAGEMENT




Proposed Funding Allocation

Funding Area	Round 1 General	Round 1 DAC	Round 2 General	Round 2 DAC
Santa Ana	\$21,925,000	\$2,205,000	\$21,925,000	\$4,095,000
	50%	35%	50%	65%


- DWR asked the region to concur with this distribution, or to propose another.
- Comment letter from SAWPA will ask to make this decision after the call-for-projects & pre-application workshop
- Delay on bulk of disadvantaged community resources to help synchronize with the ongoing DCI Program

Call for Projects Seeking Grants

- SAWPA prepared to open the call November 26, 2018.
- Online tool for data submission
 - Ensures lengthy Program and Project Information Forms developed by DWR will be completed by proponents.
- Works from the earlier database of projects in the OWOW Plan Update 2018.



SAWPA - OWOW Plan Update 2018 and Prop1 Project Submission Form



Start Login Organization General Location Partners Goals RMS Inclusion **Eligibility** Env WorkPlan Benefits Other Attachments Finish

Start Submitted Projects

Hello! Thank you for adding your project to the OWOW Plan Update 2018. Below are instructions, and the other tabs here will allow you to register/login, and then submit projects to be included in the plan. As you are working there are pop-ups and help links if you have questions. The instructions below though are the most comprehensive, and it may benefit you to download them for reference as you move through the submittal.

As the State releases implementation grants, those who wish for their project to compete for grant dollars will be asked to return and fill in additional details. Joining the [OWOW mailing list](#) is the best way to be notified when these opportunities are available

On behalf of the people of the Santa Ana River watershed and the gathered stakeholders of the One Water One Watershed Program, SAWPA appreciates your engagement.

Instructions

Draft Project Solicitation Package Released by DWR

10/5/18



Call-for-projects seeking grants

11/26/18



Proponents complete submittal details

- QA/QC screening by SAWPA staff
- Eligibility criteria screening

Ends 1/10/19



Public review period of proposed projects and programs

Ends 2/25/19



Rating & Ranking criteria applied



Final Application package submitted

June, 2019



DWR Pre-Application Workshop

- SAWPA & Proponents present to DWR
- Receipt of comments from DWR

Late April



OWOW SC Approved Final list submitted for pre-application workshop with DWR

Late March



Public QA/QC meeting of top projects

Ends 3/15/19



Public Release of Draft Ranked Project List

2/28/19

Sequence of grant-seeking

Recommendations



1. Receive and file this update about the OWOW Program Proposition 1 IRWM Implementation Grants.



Refining the
OWOW Program
based on
stakeholder
feedback

One Water, One Watershed

September OWOW Meeting

- Discussion of the OC letter received by the Steering Committee
- Presentation by Amanda Carr with asks:
 - OC Plan as OWOW Plan chapter
 - 38% of grant funding
 - OC Plan project selection
- OWOW SC Directed SAWPA staff to conduct additional engagement and data analysis



July 13, 2018

Ron W. Sullivan, Convener
OWOW Steering Committee
SAWPA
11615 Sterling Avenue
Riverside, CA 92503

Dear Commissioner Sullivan,

The North and Central Orange County stakeholders have spent a number of months developing an update of the Integrated Regional Water Management Plan for North and Central Orange County (The OC Plan), which comprehensively reflects the water management needs of this highly urbanized area of Orange County. For the reasons discussed below, we ask that The OC Plan be incorporated into the OWOW Plan Update 2018 in the following manner:

- 38% of total available future grant funds be allocated to priority projects identified in The OC Plan;
- The OC Plan be incorporated as a separate chapter within the OWOW Plan; and
- Projects within the North and Central Orange County Watershed Management Areas (WMAs) be ranked and prioritized for Proposition 1 IRWM funding through the process developed in The OC Plan.

The proposed funding allocation percentage for Orange County is based on the land area and population methodology used by the San Diego IRWM Funding Area to allocate funds between its San Diego, Riverside and Orange County Regions, which in turn was based on the statewide allocation of funds under prior funding propositions. We will present a full overview of this request and our reasoning discussed below at the July 26 OWOW Steering Committee meeting.

Orange County is Largely Hydrologically Distinct from Santa Ana River Watershed

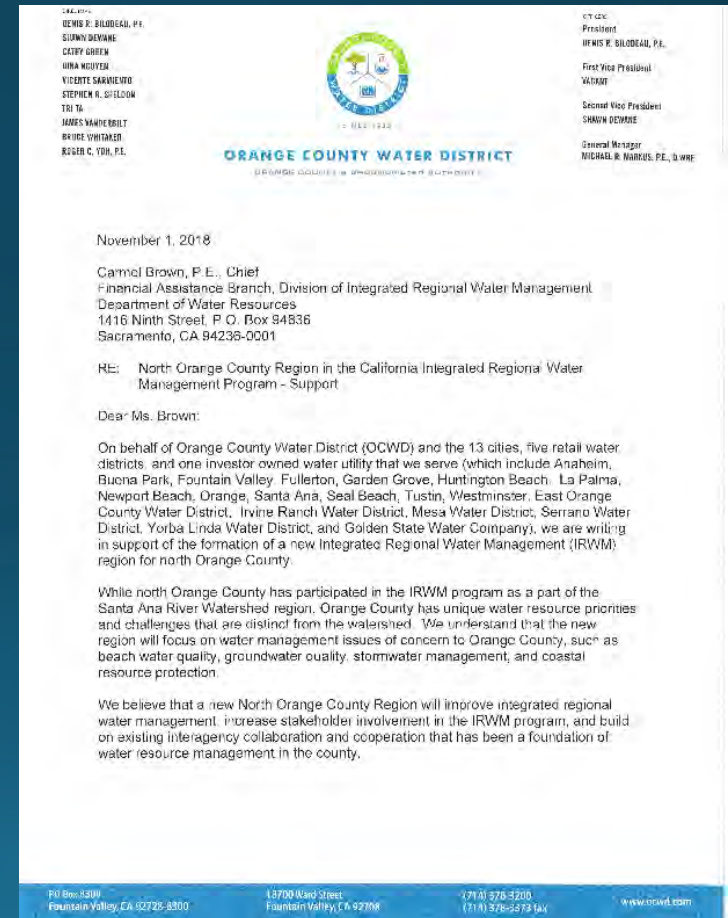
The hydrology of the Santa Ana River watershed presents unique challenges with respect to Orange County. Less than 20% of the North and Central Orange County WMAs are hydrologically connected to the watershed of the Santa Ana River, and Prado Dam physically separates the upper and lower watershed. Although issues and programs focused on the Santa Ana River and its tributaries are important to OCWMA, they do not engage the majority of the stakeholders and watershed areas within Orange County.

October Stakeholder Integration Meeting (at OC Public Works)

- Voices shared (paraphrased):
 - OWOW Plan has a reach that exceeds it's grasp – unlike the OC Plan which was made by the water agencies about water issues
 - Past efforts by OC Stakeholders was to ensure the upper watershed didn't "cause harm" to the lower watershed, which is the opposite of the current claim of being separated & distinct
 - The OWOW rating & ranking system is so different compared to OC Plan that the only way to fix it is to scrap it and start over
 - The future is one where the upper watershed will recycle and capture stormwater, further isolating the water management of the upper and lower watersheds.

Region Acceptance Process (RAP)

- Orange County Water District has delivered a letter to DWR in pursuit of a Region Acceptance Process
 - If approved, two RWMG would be present in the Santa Ana Funding Area, competing for planning and implementation resources.



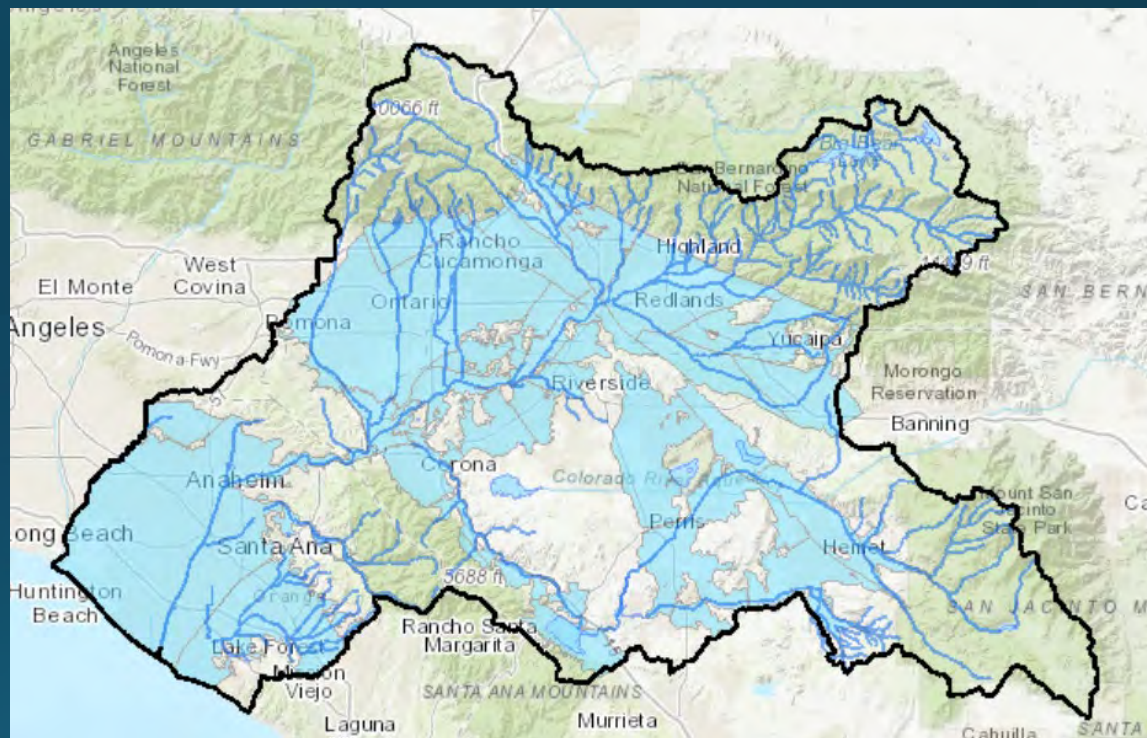
Integrated Water Management Program



“...The Integrated Regional Water Management Planning Act was passed by the Legislature in 2002. The act encouraged local and regional agencies to work together to establish a strong foundation of IRWM.” *(emphasis added)*

SAWPA & Santa Ana Funding Area

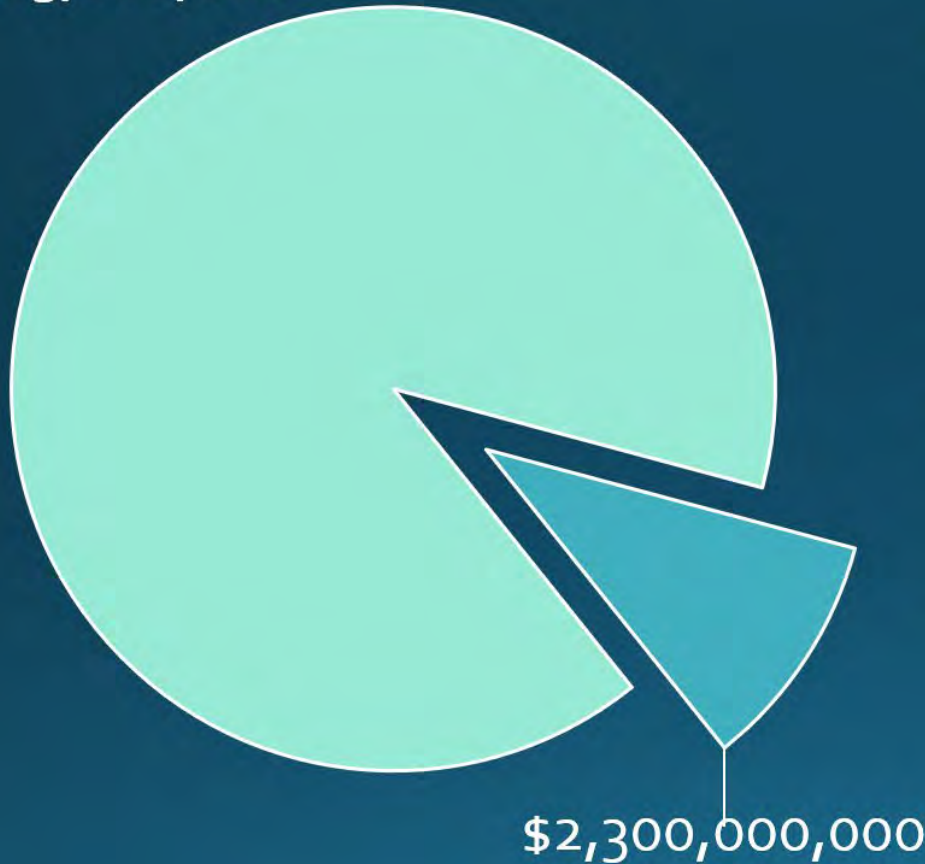
- Boundaries
 - Five-member agencies
 - Santa Ana Regional Board jurisdiction
- Watershed
 - Administrative
 - Physical
 - Social
 - Historic
- IRWM Program



Groundwater Management Zones, Streams & Water Bodies

Statewide Water Bond Allocation for IRWM

\$20,463,000,000



IRWM

Not IRWM

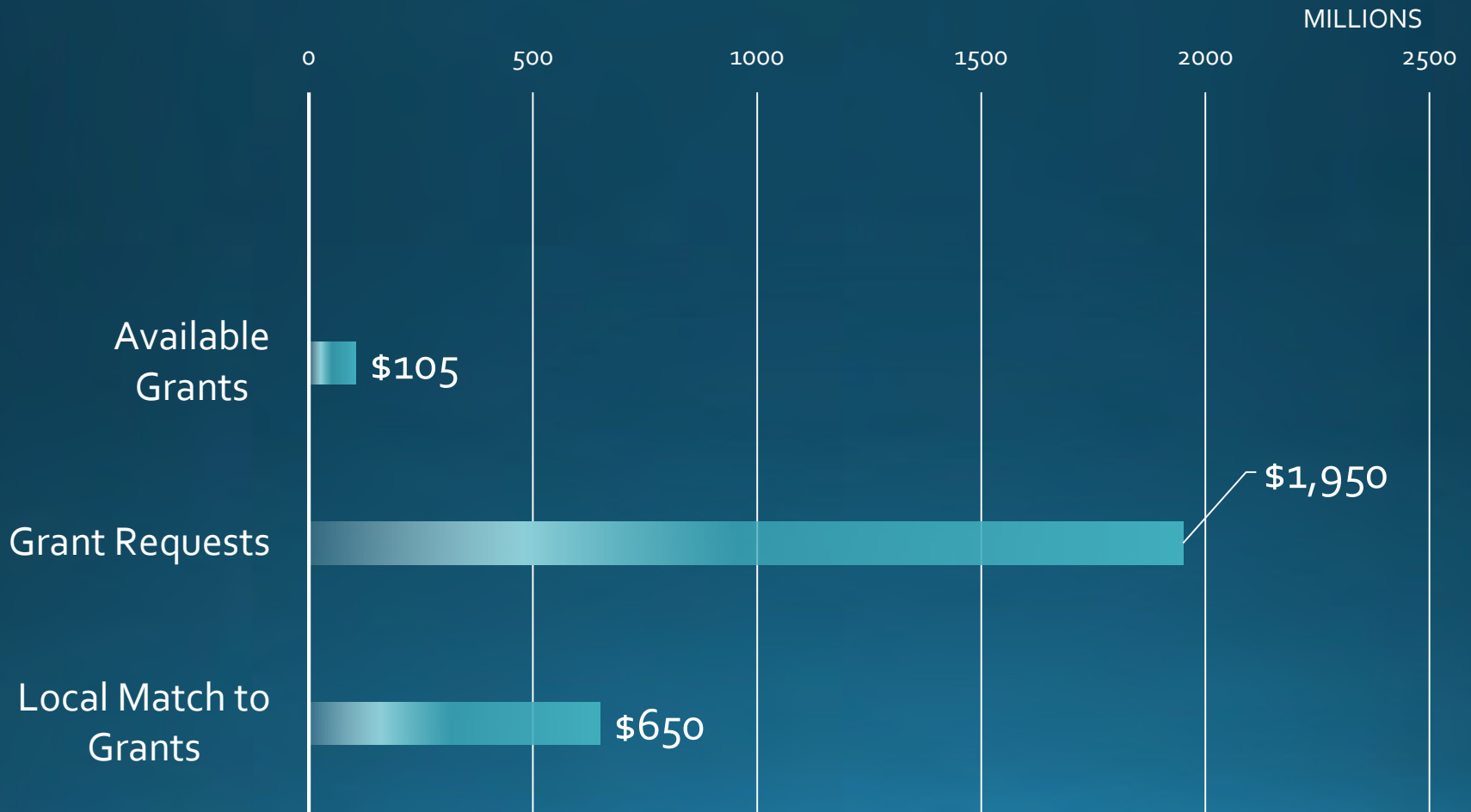
- Props 50, 84, 1E, 1
 - About 10% for IRWM

- Prop 68 (Jun '18 passed)
 - ZERO for IRWM

- Prop 3 (Nov '18 ballot)
 - Was not approved by the voters

OWOW Program IRWM Grants

PROP 84



Watershed Population Analysis

Watershed County Area	Square Miles	% total land area	% total land area (not including LA)
Orange	536	18.9%	19.2%
Riverside	1,244	43.8%	44.5%
San Bernardino	1,014	35.8%	36.3%
Los Angeles	43	1.5%	
Watershed:	2,837	100.0%	100.0%

California Department of Finance (Jan 2018): County Population Projections Calculated for within the Santa Ana River Watershed

County	2010	%	2020	%	2030	%	2040	%	2050	%	2060	%
Orange	2,562,475	43	2,771,010	42	2,918,484	40	3,024,360	39	3,073,545	37	3,074,090	36
Riverside	1,690,984	28	1,925,751	29	2,200,272	30	2,432,891	31	2,618,286	32	2,769,373	32
San Bernardino	1,736,961	29	1,896,012	29	2,107,055	29	2,321,321	30	2,530,283	31	2,747,550	32
Total:	5,990,421		6,592,773		7,225,810		7,77,8573		8,222,115		8,591,013	

Watershed Population Analysis

Watershed County Area	Square Miles	% total land area	% total land area (not including LA)
Orange	536	18.9%	19.2%
Riverside	1,244	43.8%	44.5%
San Bernardino	1,014	35.8%	36.3%
Los Angeles	43	1.5%	
Watershed:	2,837	100.0%	100.0%

Values from CA Legislature Funding Area allocation calculation

Percentage = (area*.27)+(pop*.73)

County	2010	2020	2030	2040	2050	2060
Orange	36.40%	35.86%	34.66%	33.56%	32.46%	31.30%
Riverside	32.63%	33.34%	34.25%	34.85%	35.27%	35.55%
San Bernardino	30.97%	30.80%	31.09%	31.59%	32.27%	33.15%

Pillar Chair Meeting

- Focus of discussion:
 - Changing from a watershed benefit understood as flowing with water to a watershed benefit described with resilience.
- This led to proposed changes in the Eligibility Policy:
 - Because we are interdependent, resilience anywhere is resilience everywhere.



Water Use Efficiency



Disadvantaged Communities & Tribal Communities



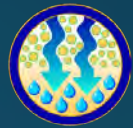
Water Quality



Natural Resource Stewardship



Water & Land Use Planning



Water Resource Optimization



Integrated Stormwater Management



Climate Risk & Response



Data Management & Monitoring



Recycled Water

Improved resilience anywhere benefits all

- Watershed approach suggests upstream impacts downstream
- This is accepted – *e.g.* OCWD main source of recharge water is the Santa Ana River flow*
- BUT, stakeholders suggest resilience anywhere benefits everywhere in our interdependent system



Resilience language

- ~~• Is an integrated project that benefits the entire watershed or a significant subwatershed in the region...~~
- Is an integrated project that enhances the resilience of a portion of the watershed, thereby enhancing the resilience of the entire watershed.**

'Resilience' here is defined as the capacity to withstand and thrive through challenges, disruption and disturbance.

Interdependence is the path where resilience flows, providing shared benefit.

OWOW Program, today

- Recognized in CA as leader in regional integrated water management.
- An adaptive management effort, learning, and constantly evolving to the regional needs.
- All stakeholders have been significant to its development and refinement, but many important features came from dedicated and invested OC stakeholders.
- Maintaining the planning and management partnerships across the watershed is important to stakeholders.
- IRWM Implementation grants are a small specialized source of funding intended to be used in specialized ways.

SAWPA 's approach – coordination, cooperation, and integration of water agencies to pool resources and manage water at the basin scale-is one of California's best models for integrated water management.

*Public Policy Institute of California 2011
"Managing California's Water – From Conflict to Reconciliation"*



2011 Top 25 Innovation in American Government

One Water One Watershed Planning

“Santa Ana Watershed Project Authority developed an integrated regional water management plan whereby agencies develop management strategies that allow them to meet agency objectives and provide cost savings by leveraging resources.”



Recommendations



1. ...adopt an updated *Prop 1 IRWM Implementation Grant Project Eligibility – OWOW Program Policy*, but at this time make no other changes to the OWOW Plan Update 2018 or the OWOW Program process of selecting projects for competitive grant opportunities.

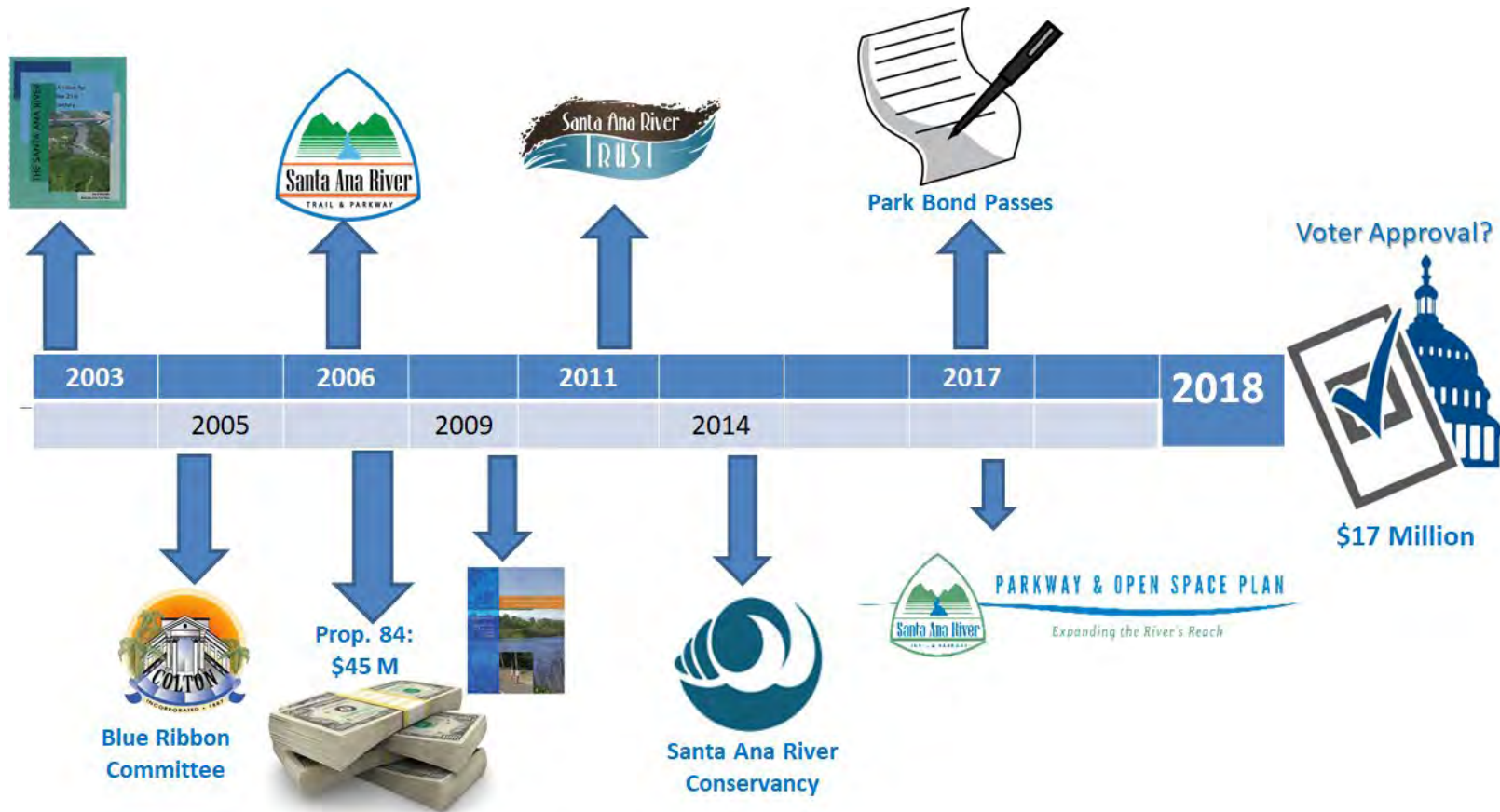
Page Intentionally Blank



PARKWAY & OPEN SPACE PLAN

Expanding the River's Reach

Recent History of Santa Ana River Parkway Progress



Story of a Successful Strategy

- **Powerful regional partnership.** Political support cooperation across counties and cities (our electeds work well together).
- **Unified.** Power and influence at state and federal level.
- **Funding.** Stable, diversified funding sources.
- **Public-Private partnership.** Locally led, locally controlled.
- **State agency.** Ability to channel funding and coordinate work.
- **Non-profit organization.** Raise funds and support, organize activities.

The Santa Ana River Trail and Parkway Partnership

Est. 2006 by Memorandum of Understanding

- Policy Advisory Group (Elected Officials)
- Technical Advisory Group (Managers)



Non-Profit Partners



INLAND EMPIRE WATERKEEPER.

Advocacy • Education • Research • Restoration • Enforcement



RIVERS & LANDS
CONSERVANCY



Corporate Partners



Bank of America



Leveraging the power of partners



SENATE BILL 1390

Bill

*And it shall be so that Jo Kunt, Matt Sants and Kevin Watterson are great people.
They are the best interns in the history of all internz, political or otherwise.
They spent massive amounts of man (and woman) hours to make this great webpage
for Governor Berkeley. They enjoyed their time in the Governor's office,
learning many things and meeting many great people.
All three of them have bright futures ahead of them.
This was typed by Kevin Watterson, who would rather use a Macintosh.*

Pass _____

Veto _____



Santa Ana River Conservancy Program Priorities

- Santa Ana River Trail and Parkway
- Trail connections, trail heads and amenities
- Open space
- Wildlife habitat and species restoration, enhancement, and protection
- Wetland restoration and protection
- Agricultural land restoration and protection
- Protection and maintenance of water quality
- Related educational uses
- Natural floodwater conveyance
- Public access to program lands for recreation and education purposes in a manner consistent with the protection of land and the natural and economic resources in the area.

HOW TO ACCOMPLISH ALL THAT?

- Establish SARCON Policy Advisory Group: PAG 2015
- Develop the Santa Ana River Parkway & Open Space Plan
- Establish Technical Advisory Group: TAC 2016
- Public Outreach
- Plan Adoption and Implementation 2018 -2019



PARKWAY & OPEN SPACE PLAN

Expanding the River's Reach

Purpose of the Plan

1. Define a shared vision for the Santa Ana River Parkway as a state, regional, and local asset
2. Generate the first comprehensive list of completed, planned and potential parkway projects
3. Provide tools for prioritizing, developing, and implementing projects through proactive collaboration



SANTA ANA RIVER PARKWAY & OPEN SPACE PLAN

- Assemble plan development team: consultants, PAG, TAC and SARCON staff
- Kick-off watershed tour
- Convene TAC to develop vision and goals
- Analyze current conditions: water, habitat, education
- Collect potential projects: planned and imagined from agencies, NGOs and existing plans
- Prioritized projects based on geospatial location suitability, proximity to river, project status
- Develop planning and design guidelines

Planning Process

1. Advisory Groups

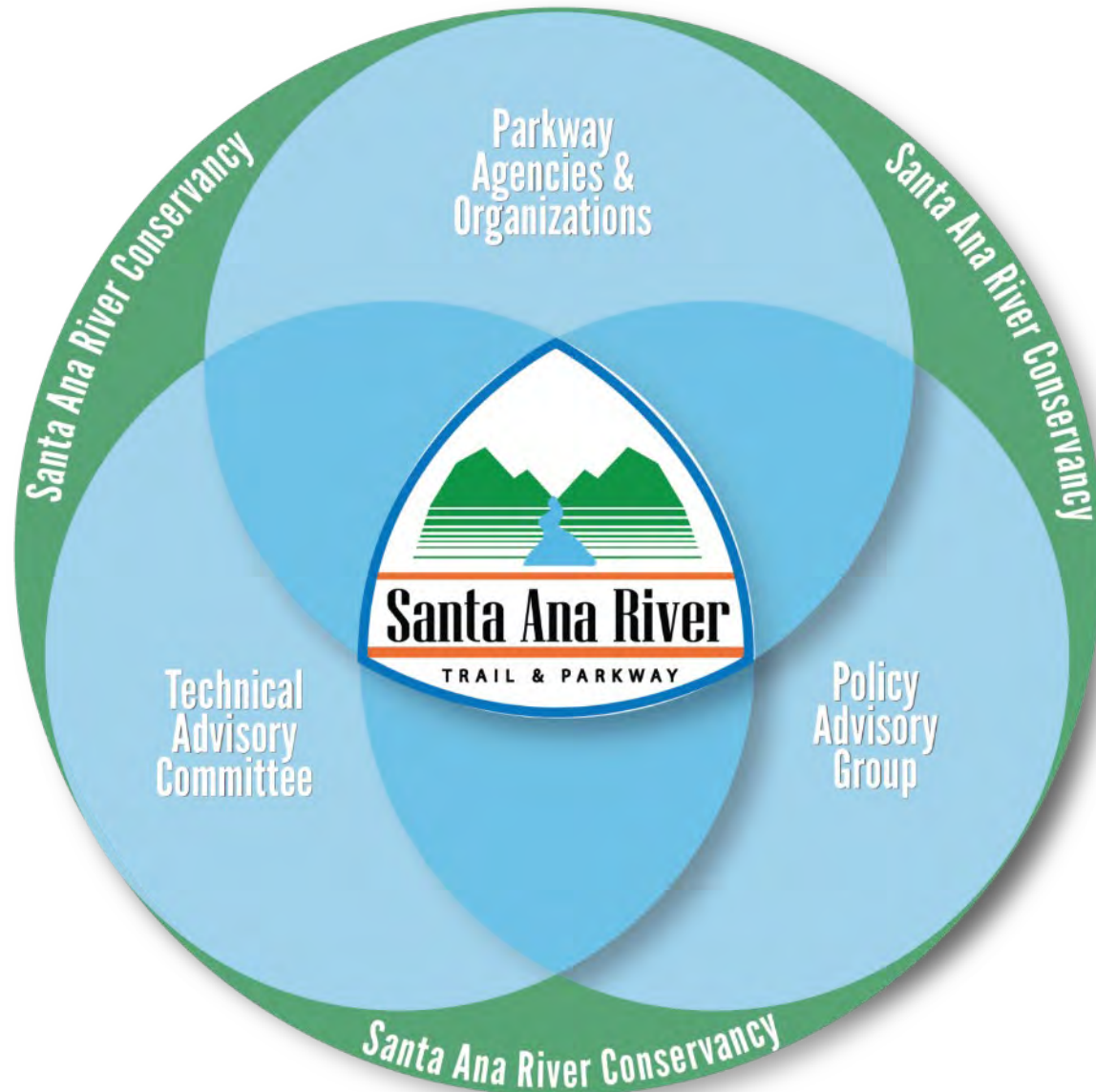
- Policy Advisory Group
- Technical Advisory Committee

2. Planning Phases

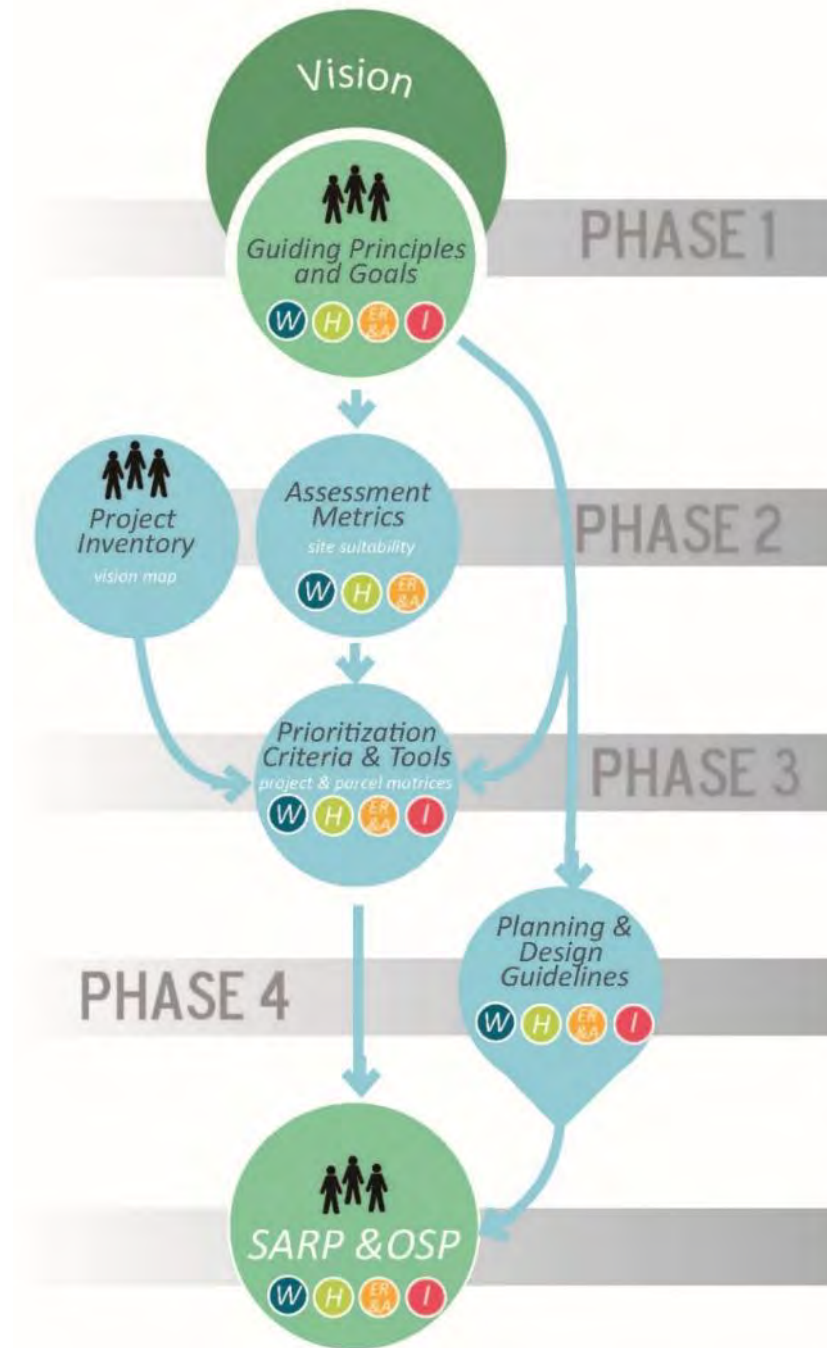
3. Public Outreach



Coordination and Collaboration



Planning Process





PARKWAY & OPEN SPACE PLAN

Expanding the River's Reach



The Santa Ana River Parkway is envisioned as a regionally celebrated resource that provides recreation, education, and health benefits for residents and visitors, and habitat for a unique diversity of plants and animals.



What is **your vision** for the Santa Ana River Parkway?

TO SHARE YOUR PRIORITIES AND IDEAS:

Complete a short online activity at:
<http://www.placeworkscivic.com/project/santaanariver>

Attend the Santa Ana River Trail Bike Ride & Festival!

at Ryan Bonaminio Park on June 11, 2017 at 9 am
5000 Tequesquite Ave, Riverside, CA

Attend a public workshop!

in San Bernardino or Orange County
Workshops are anticipated for Summer 2017

WEBSITE

<http://scc.ca.gov/projects/santa-ana-river-conservancy/>

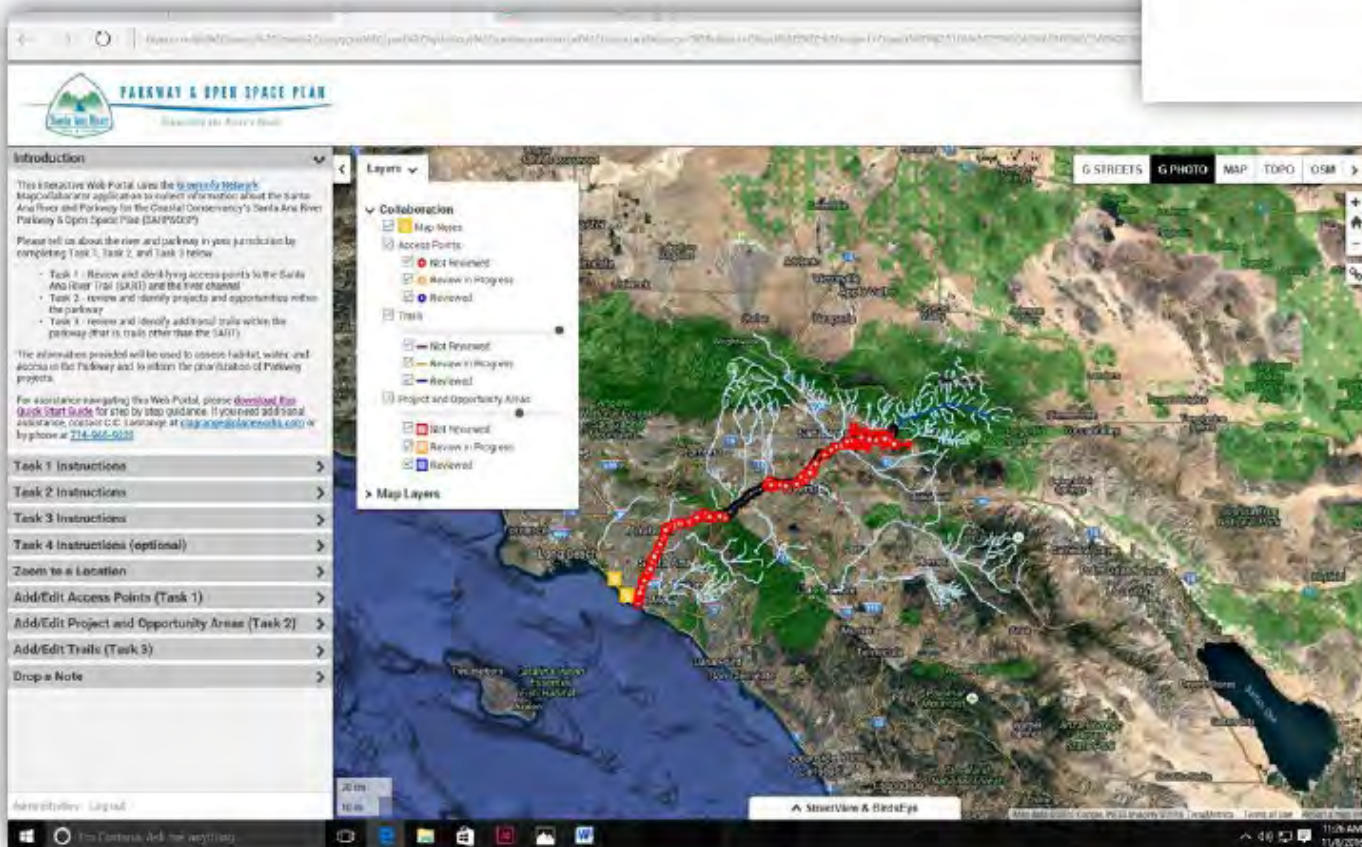


Log-in and Homepage

<http://www.mapcollaborator.org/sart/>

Login – your email address

Password – SARP&OSP16



Santa Ana River Trail Bike Ride & Festival





PARKWAY & OPEN SPACE PLAN

Expanding the River's Reach

**Public Review Draft
January 16, 2017**



Over 200 planned and potential projects have been identified to date for the Santa Ana River Parkway & Open Space Plan.

Tour Parkway Projects and add your ideas!

Planned and potential projects include projects that would improve access, provide recreational and educational opportunities, flood protection and water quality, and habitat continuity.

Projects are located on the Draft Vision Map below, and described on the Project List. To add additional ideas, place a **BLUE** sticker on the proposed location and then describe the project on the Project List.



PARKWAY & OPEN SPACE PLAN

Expanding the River's Reach



Visit <http://scc.ca.gov/projects/santa-ana-river-conservancy/> to learn more about the SARP & OSP and opportunities to participate!

What will make the Santa Ana River Parkway a great place to play and learn?

Place your 3 stickers on the **recreation, education and access** features that are most important to you.

<p>Community Gardens</p>	<p>Educational Features (Signage, Exhibits, Visitor Center, etc.)</p>
<p>Public Parks and Open Space</p>	<p>Trails and Trail Amenities (Benches, Drinking Fountains, etc.)</p>
<p>Staging Areas (Parking Lot, Restroom, etc.)</p>	<p>River Access</p>
<p>Overnight Accommodations (Campgrounds, Hostel, etc.)</p>	<p>Other</p>



PARKWAY & OPEN SPACE PLAN

Expanding the River's Reach





PARKWAY & OPEN SPACE PLAN

Expanding the River's Reach

Understanding the Parkway

Chapter 1: Introduction

Chapter 2: Vision, Guiding Principles, and Goals

Chapter 3: Parkway Context and Existing Conditions

Parkway Projects

Chapter 4: Completing the SART

Chapter 5: Prioritization of Parkway Projects

Chapter 6: Planned and Potential Projects Beyond the SART

Guidelines and Implementation

Chapter 7: Planning Guidelines

Chapter 8: Design Principles and Guidelines

Chapter 9: Implementation



PARKWAY & OPEN SPACE PLAN

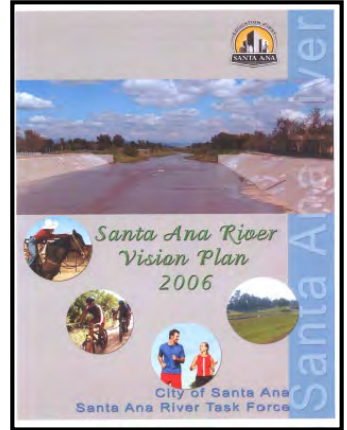
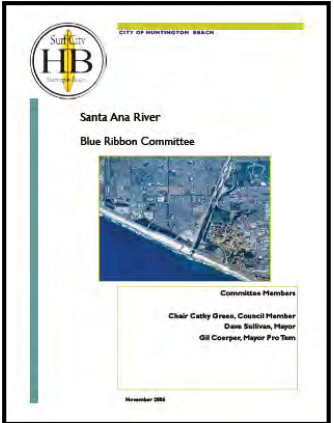
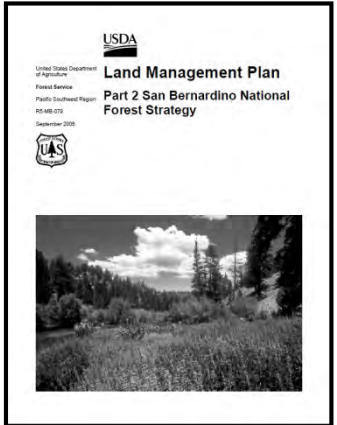
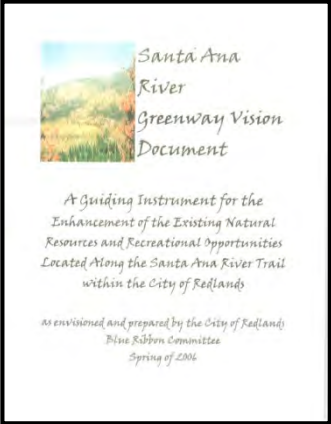
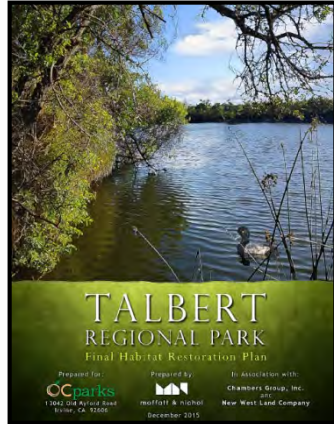
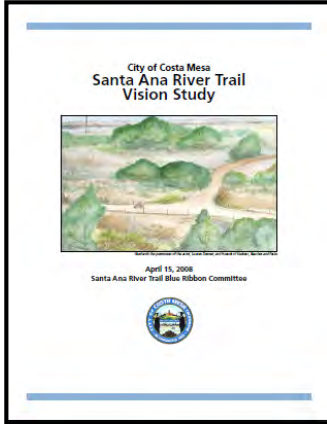
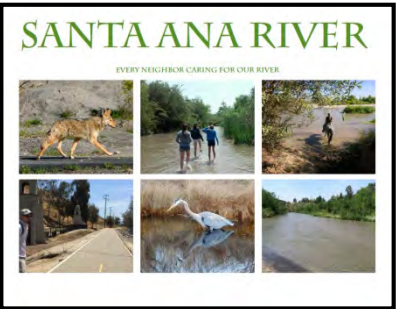
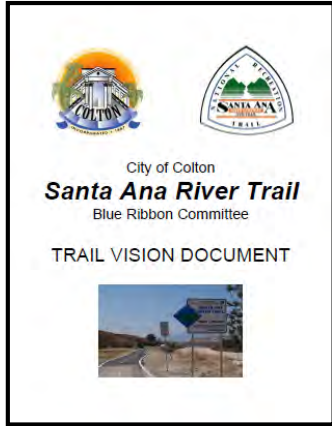
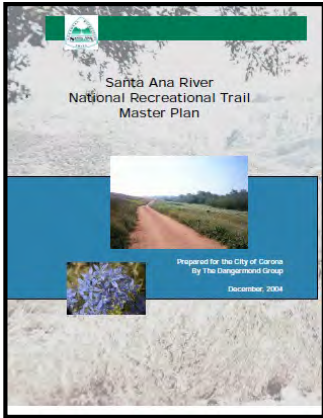
Expanding the River's Reach

Understanding the Parkway

Chapter 1: Introduction

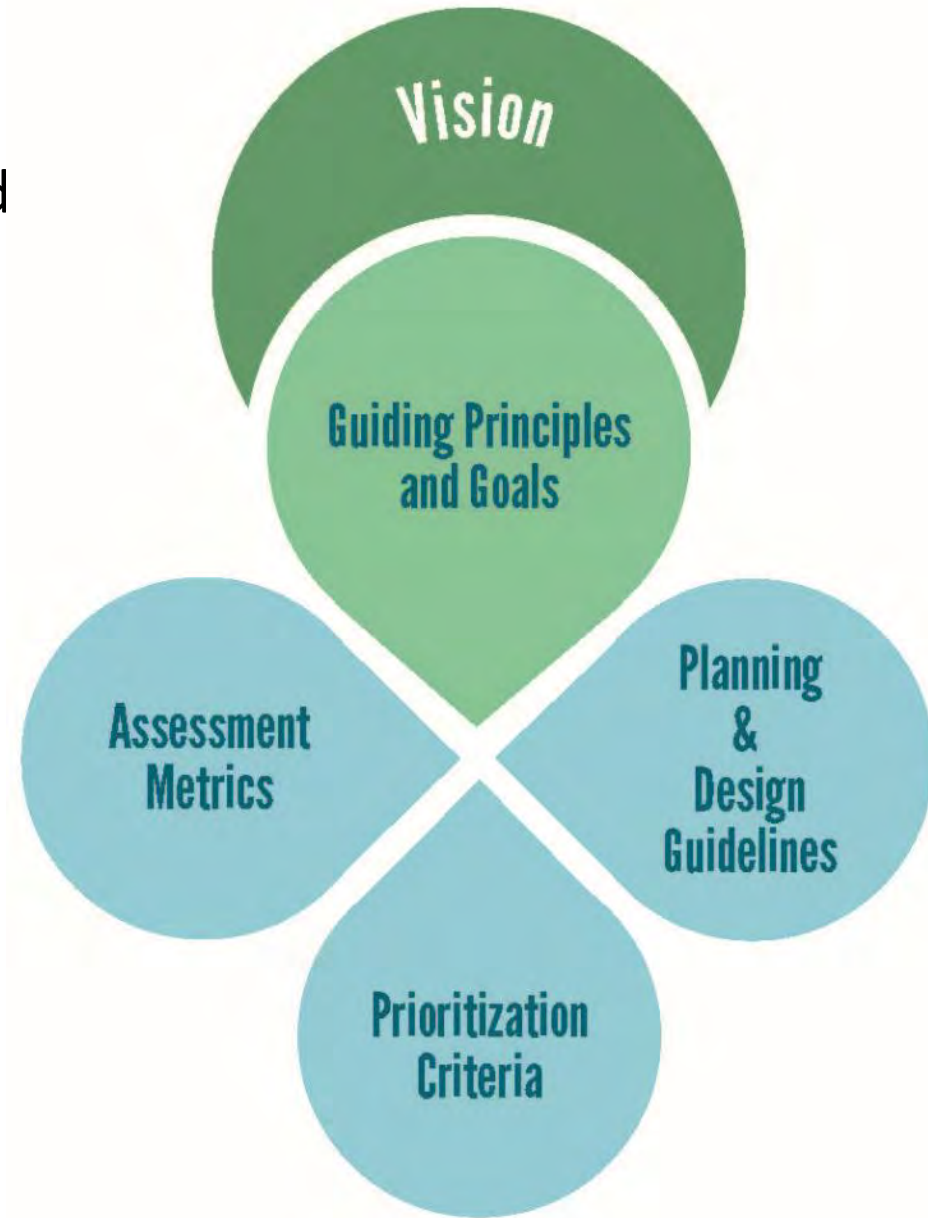
Chapter 2: Vision, Guiding Principles, and Goals

Chapter 3: Parkway Context and Existing
Conditions



Vision, Guiding Principles and Goals

- Guide the work of agencies and organizations to ensure that individual efforts contribute to the greater whole.
- Informed by many visions and goals identified in existing planning documents of individual Parkway agencies and organizations.
- Steered development of the assessment criteria, project prioritization tools, and guidelines



Santa Ana River Parkway Vision

The Santa Ana River Parkway is a regionally celebrated resource...

Santa Ana River Parkway Open Space and Trail

...that provides varied opportunities for residents and visitors to **experience the river corridor** along its entire length while providing necessary **water management functions**, **habitat** for a unique diversity of plants and animals, and **recreation, education, and health benefits**.

Guiding Principles



Water

***Water is an essential and limited resource** that should be carefully managed to maximize its benefit to people, plants, and animals while providing protection from flood flows.*



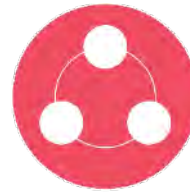
Habitat and Wildlife

*Wetland, riparian, and adjacent upland **habitats** along the river corridor provide multiple environmental and community benefits; these ecosystem functions **should be respected, cared for, and conserved***



Education, Recreation, & Access

*The river corridor is a resource that should **provide equitable recreational, educational, and health benefits** to all residents and visitors along its length and inspire sustained stewardship of the resource.*



Implementation

***Cooperation and collaboration** among agencies, organizations, and members of the public is critical to developing the river corridor in a way **that maximizes benefits to the natural and human environments** and integrates effectively with other planning efforts.*

Parkway Context and Existing Conditions

- Historical Context
- Regulatory and Planning Context
- Natural Resources
- Existing Public Access Features





Parkway Projects

Chapter 4: Completing the SART

Chapter 5: Prioritization of Parkway Projects

Chapter 6: Planned and Potential Projects
Beyond the SART

First Priority: Completing the Santa Ana River Trail

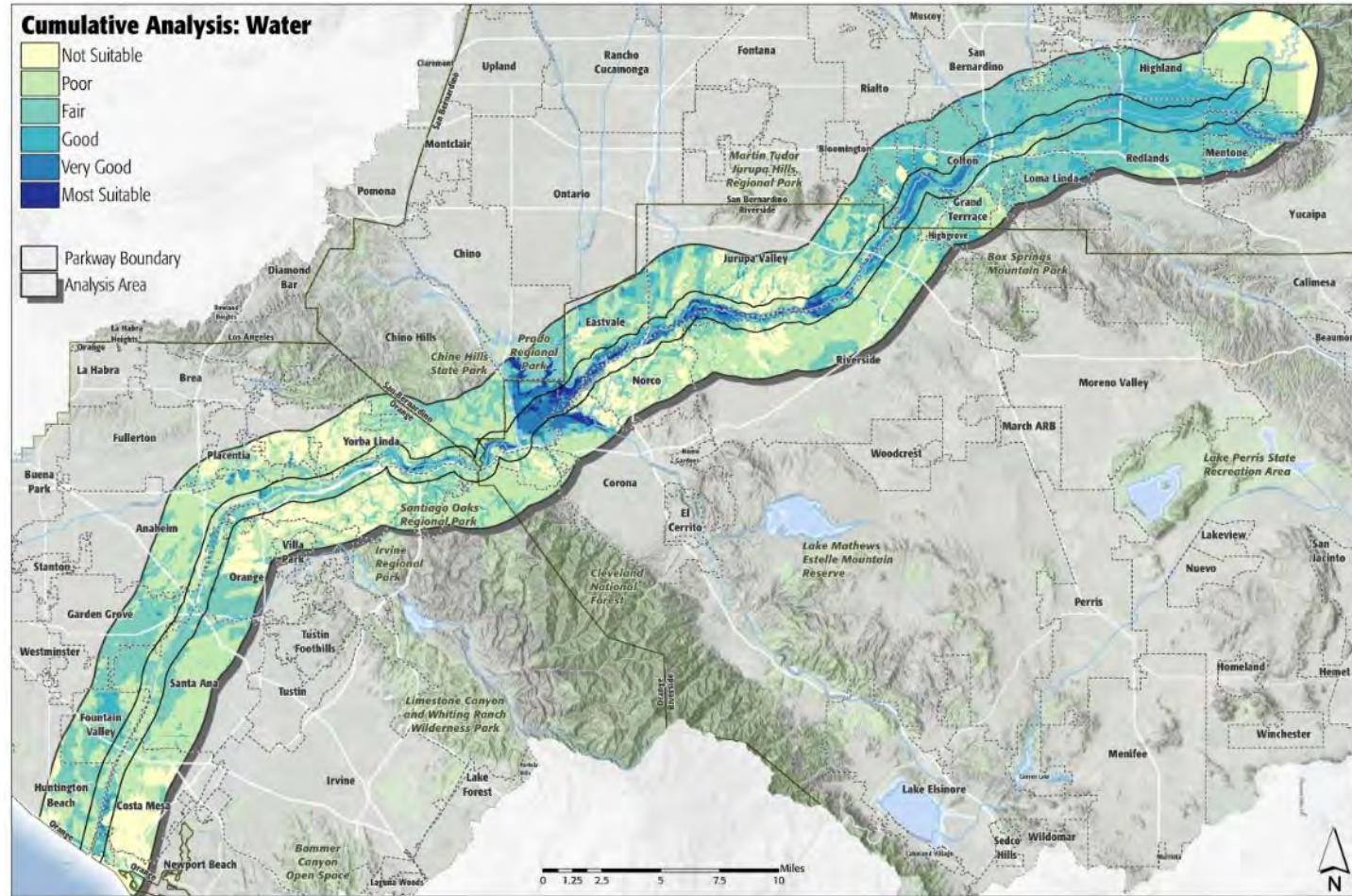


Purpose & Criteria

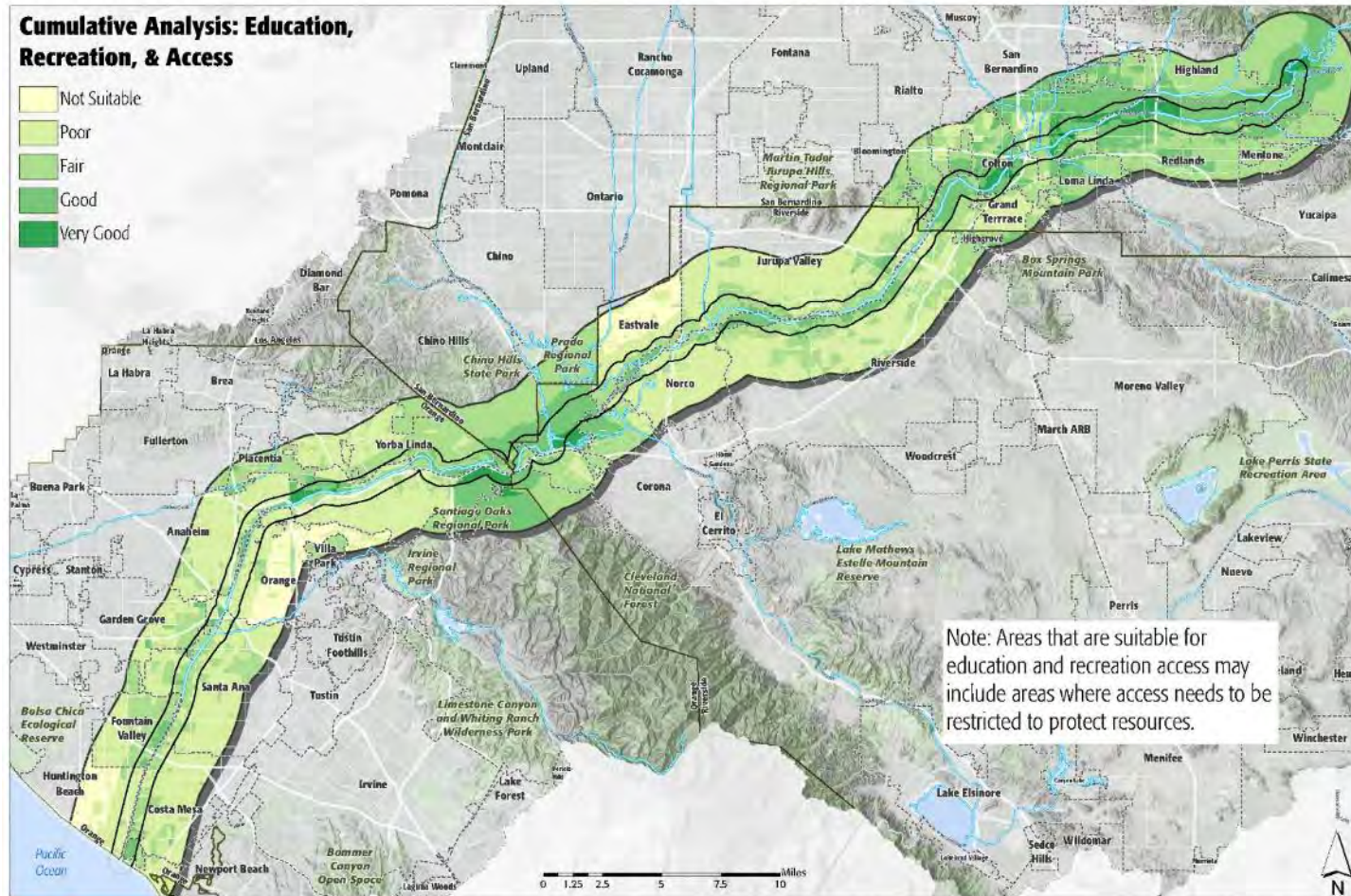
- Identify projects most likely to contribute to SARP&OSP vision
- Criteria:
 1. Project Location Suitability
 2. Consistency with Parkway Guiding Principles
 3. Proximity to River
 4. Project Status

$$\begin{array}{r} \text{(Water LS x Water GP)} \\ \text{(Habitat LS x Habitat GP)} \\ \text{(Access LS x Access GP)} \\ \text{Proximity to River} \\ + \text{Status Score} \\ \hline \text{Overall Score} \end{array}$$

Project Location Suitability; Water



Project Location Suitability: Equitable Education, Recreation & Access





PARKWAY & OPEN SPACE PLAN

Expanding the River's Reach

Guidelines and Implementation

Chapter 7: Planning Guidelines

Chapter 8: Design Principles and Guidelines

Chapter 9: Implementation

Initial Steps - Concurrent

1. Santa Ana River Program Development

1. Recognize SARP&OSP in Policy Documents
2. Establish Voluntary Parkway Designation Program
3. Build Recognition for the Santa Ana River Parkway

2. Project Development and Implementation

1. Complete the SART
2. Pursue High Priority Projects
3. Continue to Update and Expand the Parkway Projects Prioritization Matrix



QUESTIONS?

Agencies and Organizations Represented on the TAC

California State Parks – Inland Empire District

California Department of Fish and Wildlife

City of Anaheim

**City of Riverside Parks, Recreation & Community Services
Department**

Inland Empire Waterkeeper

Natural Resources Conservation Service

OC Parks

OC Public Works

Orange Coast River Park

Orange County Water District/Santa Ana Watershed Association

PLD Consulting

Riverside-Corona Resource Conservation District

Riverside County Regional Park and Open Space District

Rivers & Lands Conservancy

San Bernardino County

Santa Ana Regional Water Quality Control Board

Santa Ana Watershed Project Authority

San Bernardino Valley Water Conservation District

State Coastal Conservancy

Trust for Public Land

U.S. Army Corps of Engineers

U.S. Fish and Wildlife Service

U.S. Forest Service

The Wildlands Conservancy

Wildlife Conservation Board

**Santa Ana River Trail and Parkway Partnership
Policy Advisory Group 2018 Membership Roster January 2018**

Officers

Chairman: Rusty Bailey, Mayor, City of Riverside

Vice-Chairman: David Myers, Wildlands Conservancy

Secretary: Jon Harrison, City of Redlands

Members

James Ramos, San Bernardino County, Supervisor, District 3

John Tavaglione, Riverside County Supervisor, District 2

Todd Spitzer, Orange County, Supervisor, District 3

Phil Anthony, Board of Directors, Santa Ana Watershed Project Authority

Eugene Montanez, Councilman, City of Corona

Mike Gardner, City of Riverside

Laura Roughton, Councilmember, City of Jurupa Valley

Carey Davis, Mayor, City of San Bernardino

Vacant, San Bernardino County City Representative (1)

Vacant, Orange County City Representatives (3)

Other Participating Members (alternate)

Kevin Jeffries, Riverside County, Supervisor, District 1

Josie Gonzales, San Bernardino County, District 5

Vacant, Orange County, Supervisor, District 1