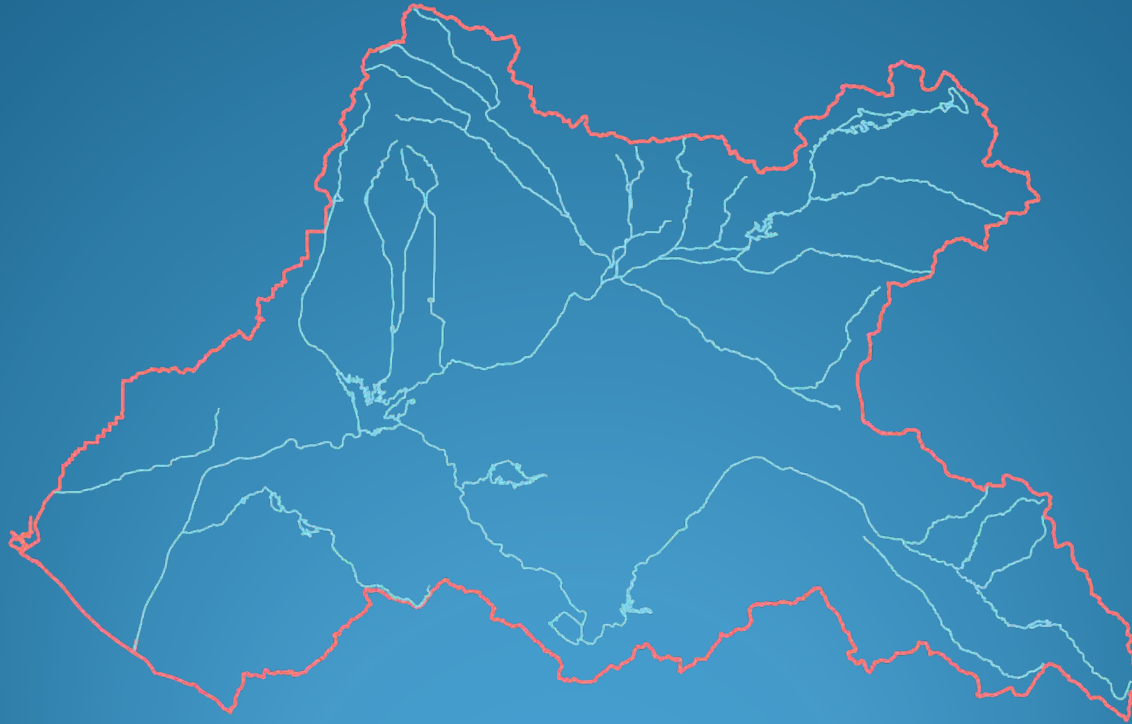


# Watershed Sign Search Competition



SAWPA Commission

April 3, 2018

Ian Achimore

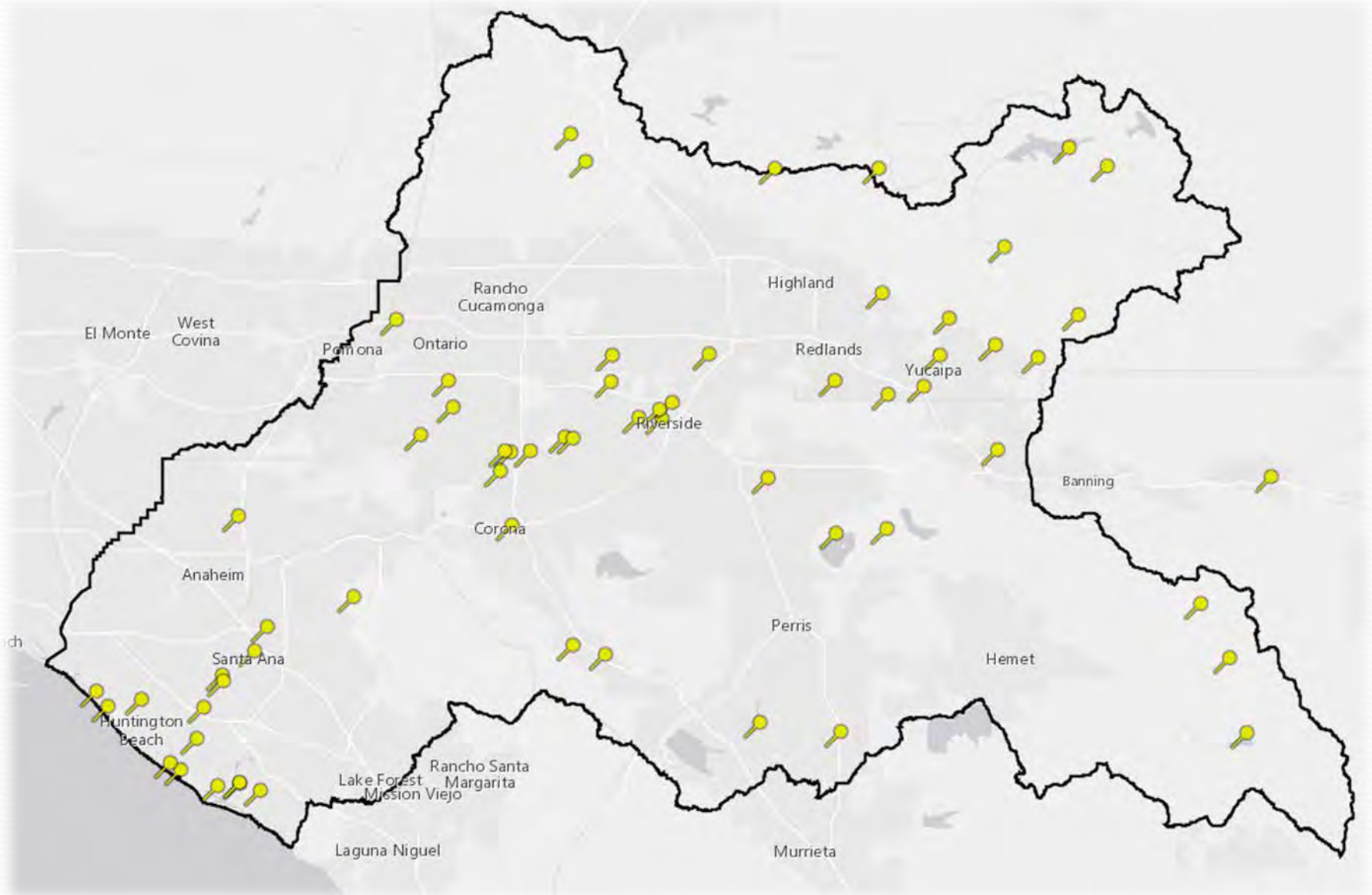
Senior Watershed Manager

# Background on Sign Installations

- \$5,600 SAWPA contract w/ Bri Communications (public relations firm)
- 10 other sign sponsors (all public agencies)
- 64 signs in watershed as of December 2017
- SAWPA logo and OWOW description included on signs



# Location of 64 Signs



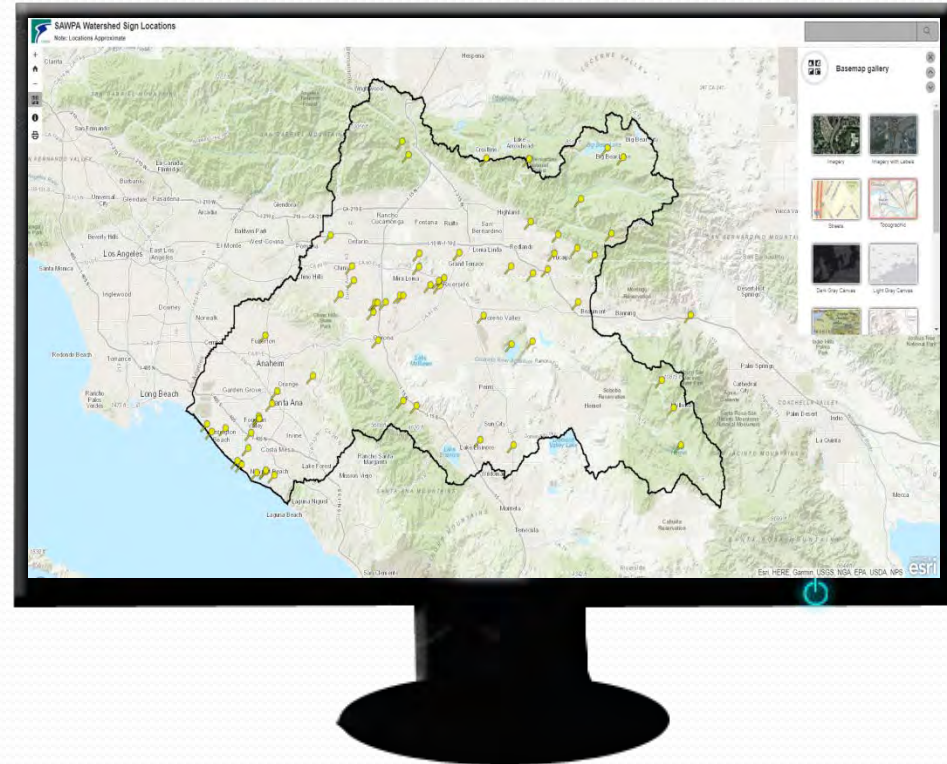
# Sign Search Competition

- Staff has drafted a competition for members of the public to find the most signs by August 31, 2018
- Competition would increase public awareness of OWOW, water resources in the region, and the sign displays SAWPA has co-funded
- Have coordinated with Bri Communications on funding competition award



# Next Steps (Pending Commission Approval)

- Coordinate with 10 other sponsors and various river/trail entities
- Distribute two page press release and competition participation conditions to 3 major newspapers
- Create webpage for public to access competition info and interactive map of sign locations



# Finalization of Competition

- Throughout Competition period, public submits photos via email
- Staff tabulates photos in accordance with conditions
- In September 2018 present competition results to Commission
- Provide \$200 gift card and plaque to winner(s)



# Competition Budget



- \$9,000 for administering competition (*source: Fund 100-00 General*):
  - Developing competition
  - Review submitted photos
  - Field questions from public
  - Coordinate with press and other public agencies
  - Finalize competition with awards and presentation to Commission
- Up to 4 \$200 (\$800 total) Amazon gift cards (*source: private donations*)

# Recommendation

That the Commission approve staff time and material costs of an amount not to exceed \$9,000 associated with implementation of the proposed Santa Ana River Watershed Sign Search Competition.







# 2014 Emergency Drought Grant Program Status Report

Mark Norton  
Water Resources & Planning Manager  
SAWPA  
April 3, 2018

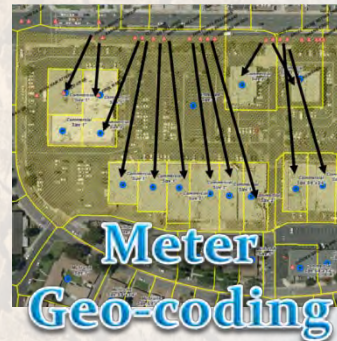


# Projects in 2014 Emergency Drought Grant Agreement

Project 1: Conservation Based Reporting Tools and Rate Structure Implementation



Project 2: High Visibility Turf Removal and Retrofit



\*Components/tasks



# IRWM Areas in 2014 Emergency Drought Grant Agreement





# Background – Project Agreement 22 Committee



**Mission:** To develop and implement demand reduction and water use efficiency measures in order both to effect an urgent response to the current drought and to transform the water use efficiency of the Santa Ana River watershed in the future.

**Committee Members:** General Managers of SAWPA member agencies

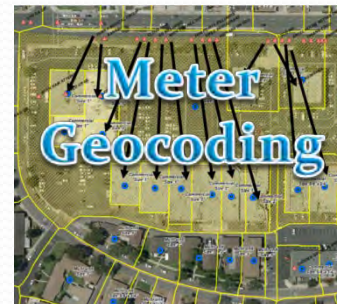
**Committee Chair:** Paul Jones, EMWD General Manager

**Committee Administration:** SAWPA staff



# 2014 Emergency Drought Grant Program Components

## High Visibility Turf Removal and Retrofit



# PA 22 Committee Policy

## Statement History



- What are PA 22 policy statements?
  - Help define program requirements such as what type of rebates qualify for grant reimbursement.
- How many are related to turf?
  - No. 1: Allocation between SAWPA agencies, limit definition of “institutional”
  - No. 3: Modified allocation between SAWPA agencies
  - Committee Action July 2015: Broadened institutional definition to include churches

# Initial Policy Definition of Institutional

- HOA and public agencies (clarified that churches are included in 2015)
- During drought, less of these entities were utilizing existing rebates and HOAs had a high potential for water savings
- Emergency Drought Grant Program was designed by SAWPA member agencies to increase rebate amounts for these types of entities



# Municipal Water District of Orange County



- MWDOC still prioritizing public agencies: new marketing campaign launched.
- MWDOC has \$880,894 grant allocation from Policy Statement No. 3
  - To date has utilized \$99,014 of the allocation.
- Allowing highly visible commercial properties would immediately utilize funding for pending projects.
- Estimated that 16 average size projects would still be needed by December 31, 2018 deadline.
- In order to meet deadline, MWDOC and SAWPA have met continually to strategize best way to utilize all grant funding.



# Mar. 22, 2018 PA 22 Committee

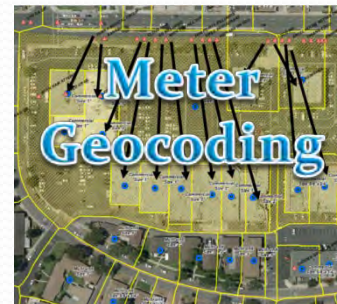
## supported policy changes to allow use of grant funds



- Broaden definition of “Institutional” to include highly visible commercial properties in order to ensure grant funds are utilized by deadline
  - Reflect change in Grant Agreement amendment
  - Reflect change in new policy statement (No. 5)
- Golf courses still excluded
- Advisory workgroup in consensus, other agencies could utilize new policy if they have grant funding remaining in allocation

# 2014 Emergency Drought Grant Program Components

## Conservation-Based Water Rates Status



# Scope of Conservation-Based Rates Component

- SAWPA provides funding and technical assistance (w/ Tom Ash of IEUA) to retail water agencies
- \$215,030 in funding per retail water agency under two phased approach
- Agency, if board approves, implements rates and provides water use information to SAWPA/DWR for ten years post implementation



# Partnership with Retail Agencies



# Conservation Based Rates

## Policy Statement History

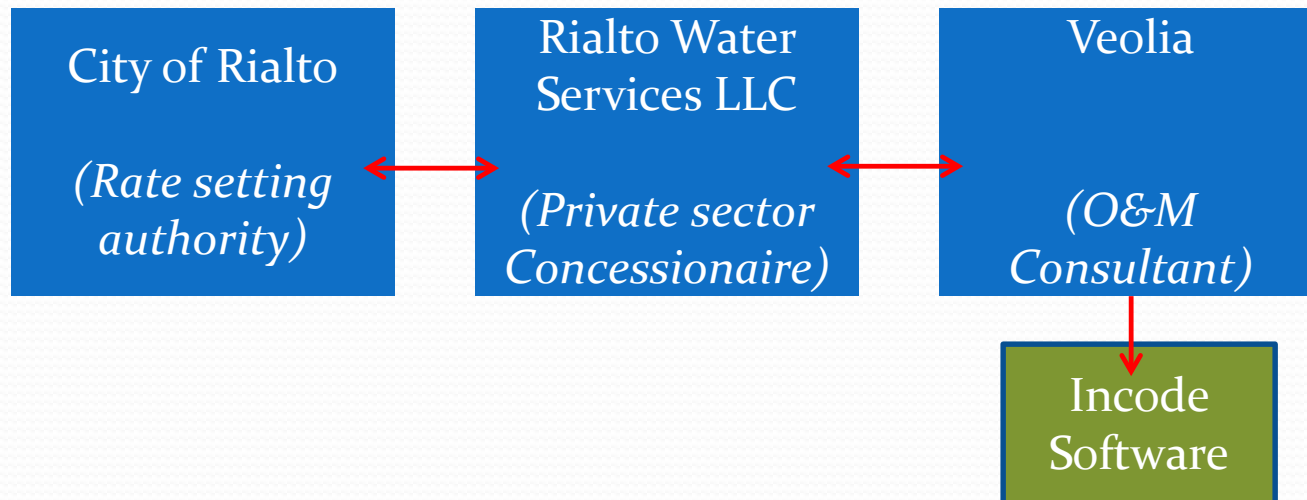


- PA 22 Rates Policy Statement does the following:
  - “Conservation-based rates” = budget-based rates with three escalating tiers,
  - Two phased approach for allocating \$215,030 in Sub-Agreement, and
  - The eligible costs for studying and implementing conservation-based rates such as billing system needs, public outreach and other internal needs an agency may need to accomplish adopting conservation-based rates.

# Rialto and Grant Deadline



- Rialto has studied budget-based rates but cannot meet even the extended implementation deadline in amended Grant Agreement: December 31, 2018.
- Billing system, Incode, which is managed by third party Veolia Water Technologies is out of date.
- Billing system needs to calculate budgets on a discrete customer basis.



# PA 22 Committee supported recommendation to accept Rialto's work to date as meeting Phase 1 grant deliverable



- Rialto has invoiced the SAWPA and the State \$57,000 for rate study and data management costs, but cannot move forward with rates.
- Rialto is able to provide a summary of the data they have acquired through participation in the program
  - High level customer budgets,
  - Demand forecasts using aerial imagery,
  - System cost projections
- The \$57,000 has prepared them to implement conservation-based rates.
- Committee agreed with staff recommendation that this preparation complies with the intent of the policy statement.
- Rialto staff indicated that it will not be able to proceed with adoption for another 2-3 years so it will terminate grant agreement



# City of Tustin also pulls out

- Tustin is also not able to proceed with conservation-based rates by extended grant deadline.
- City management has given direction to their staff not to proceed until late 2019 as major policy decisions such as rate changes need to be considered by new Council (2 members termed out).
- Even though Tustin have incurred costs, they have not invoiced SAWPA.
- Grant agreement with Tustin will be terminated



# Remaining Cities Participating

## Chino



Rate study final,  
Billing system update in April,  
Prop 218 process soon.

## Chino Hills



Rate study final,  
Billing system update in April,  
Prop 218 process begun.

## Hemet



Rate study draft,  
Briefed City Council  
Members and  
Management Team,  
Scheduling Follow Up  
Workshops.

# Overall Emergency Grant Program Status

## Scheduled Completion Dates by Component

### **Project 1: Conservation Based Reporting Tools and Rate Structure Implementation**

- Aerial Mapping: (Completed) July 2017
- Conservation Based Rates: December 2018
- Meter Geocoding & Business Classification: December 2018
- Web-Based Information Tool: June 2018

### **Project 2: High Visibility Turf Removal and Retrofit**

- Turf Removal: December 2018

## Status of Program Spending (As of January 31, 2018 invoices to SAWPA):

	<b>Grant</b>	<b>Required Funding Match</b>	<b>Total</b>
<b>In Grant Agreement</b>	\$ 12,860,110	\$ 7,051,533	\$ 19,911,643
<b>Invoiced (\$)</b>	\$6,118,805	\$ 5,943,834	\$12,062,639
<b>Invoiced (%)</b>	48%	84%	61%



Questions?

Page Intentionally Blank

# Inland Empire Brine Line

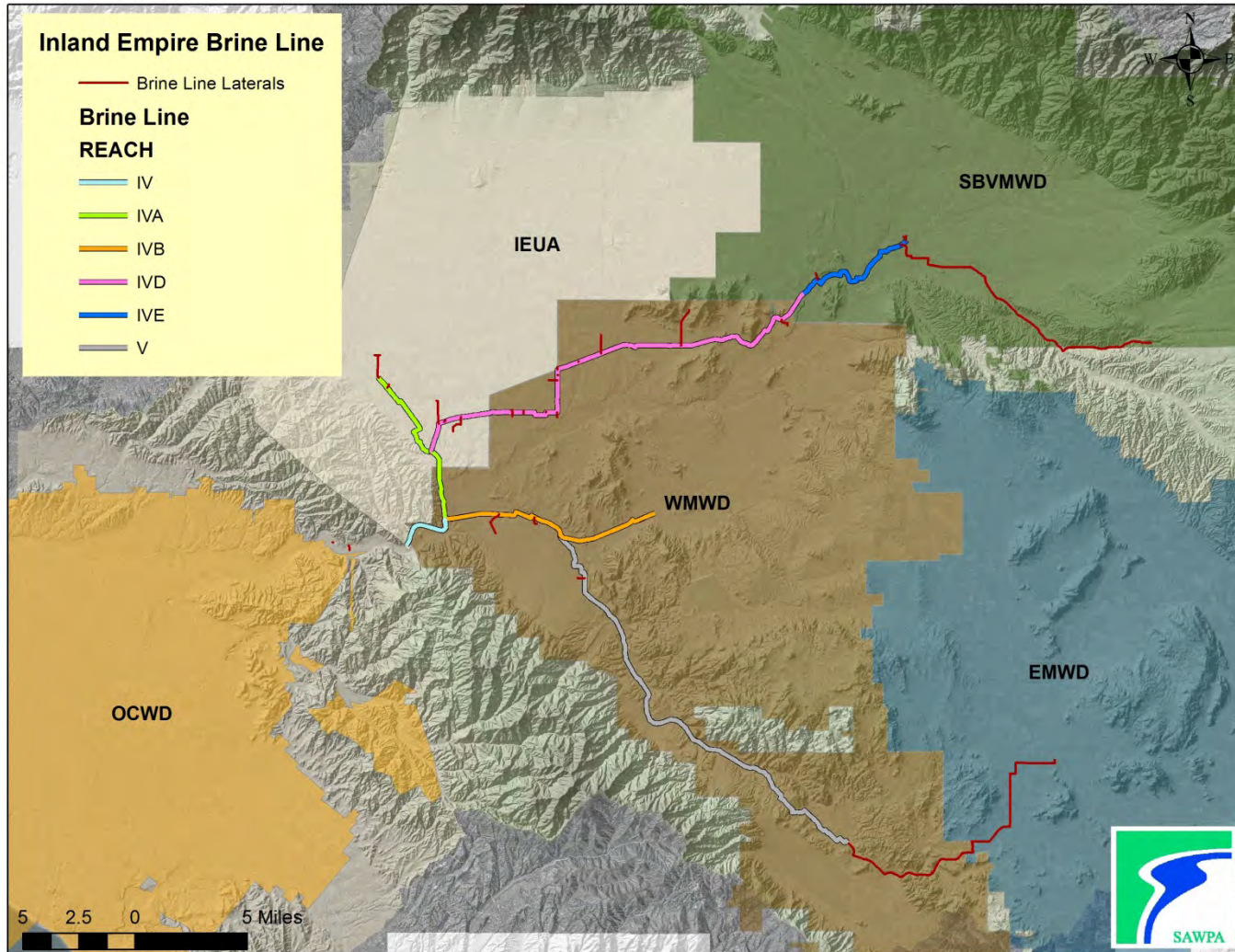
Operations Report

April 3, 2018

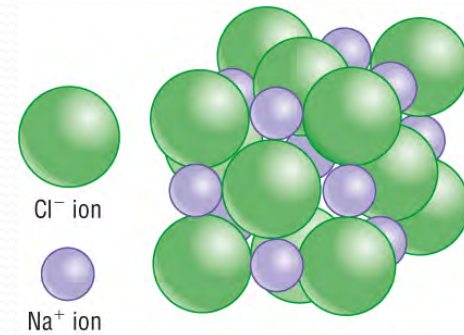
# Recommendation

- Receive and File

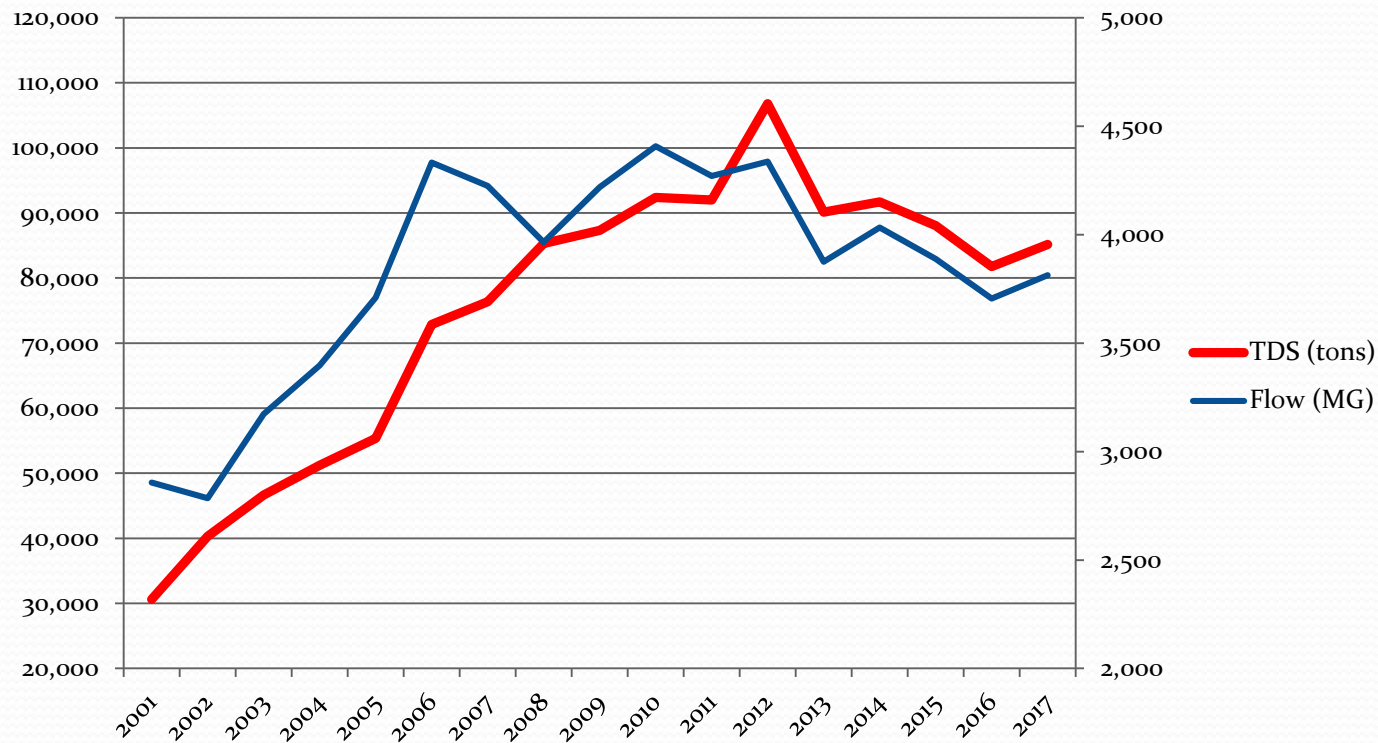
# Inland Empire Brine Line



# Salt Removal – Flow Data



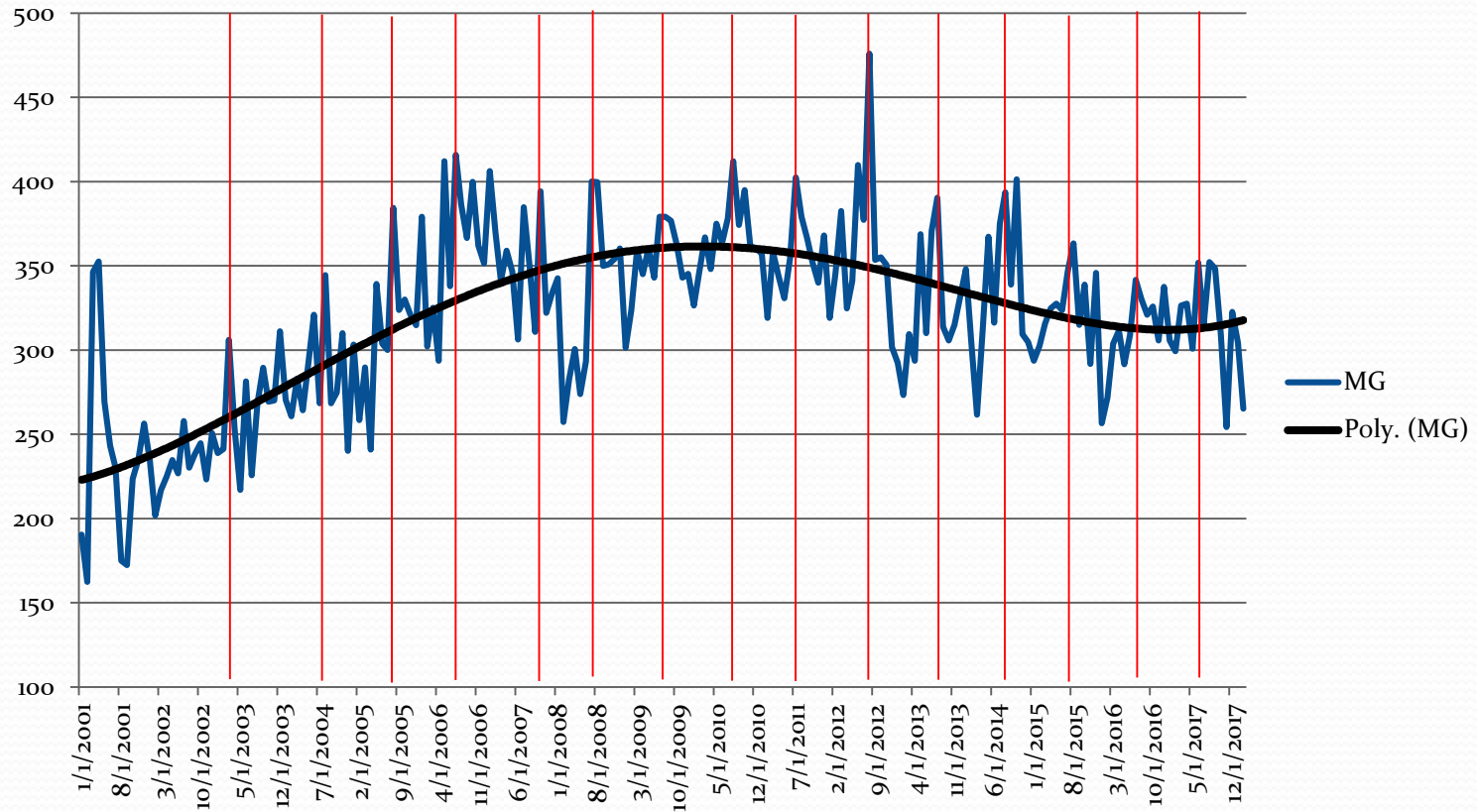
**Inland Empire Brine Line (2001-2017)**  
**TDS (tons) - Flow (MG) per year**





# Brine Line Flows - History

MG per month



# Sewer System Management Plan

- Guiding document for Brine Line Operations
- Plan is audited every 2 years (due later this year)
- Recertified every 5 years (due 2019)
- 13 sections



## CHAPTER 18. SSMP APPENDIX TABLE OF CONTENTS

Appendix	Document	Last Updated
A-1	State of California Water Resources Control Board Order No. 900 9/03	June-06
A-2	State of California Water Resources Control Board Order No. 2008-0010-EXCEC	March-16
A-3	State of California Water Resources Control Board Order No. 2013-0008-EXCEC	June-06
A-4	SSMP Schedule	June-06
A-4	CDM Gap Analysis	September-07
B-1	SAWPA Organization Chart	August-17
C-1	Ordinance No. 7, An Ordinance Establishing Regulations for the Use of the Inland Empire Brine Line Sewer System Standard Drawings	October-13
C-2	S-01 60" Diameter Precast Manhole Installation	July-08
	S-02 Manhole Base for 3 Inlets Existing Type	May-08
	S-03 Manhole Pipe Connections	May-08
	S-04 Manhole Miscellaneous Details	May-08
	S-05 30" Manhole Frame and Two Curved Storm Covers	March-16
	S-06 Manhole Lining System	May-08
	S-07 Locking Manhole Cover	May-08
	S-08 Pipe Bidding and Trench Backfill for Sewer Facilities	May-08
	S-09 Permissible Depth of Cover for PVC Pipe	May-08
	S-10 Water, Recycled Water and Sewer Main Parallel Separations	May-08
	S-11 Water, Recycled Water and Sewer Main Perpendicular Separations	July-08
	S-12 Water, Recycled Water and Sewer Main Parallel and Perpendicular Separation Notes	July-08
	S-13 Sealed HDPE Gravity Sewer Access Manhole	July-08
	S-14 Sealed FRP Gravity Sewer Access Manhole	July-08
S-15 Pipe Support for Undercut Sewer Mains	July-08	
C-3	Member Agency Agreements	-
	Multijurisdictional Treatment Agreement Between SAWPA and the Agencies (EMWD, IJUA, IJSD, Valley Ditch, SBWMD, WAWMD and YVWD) Operation and Maintenance Agreement for Reach IV, IV-A, IV-B, IV-C, and IV-E, between WAWMD and SAWPA	October-13 August-13
C-4	List and Sampler of Discharge Permits (Point and Nonpoint Discharge Permits)	September-13
C-5	List of Discharges to the Brine Line	August-17
C-6	SAWPA's Business Summary, RSP Consulting	January-08
C-6	Brine Line Plan	August-17
C-7	Sample Brine Line Connection Application	March-16

SAWPA - Brine Line Cleaning Program (March 2018)

Main Pipelines									
Req. MH	End. MH	Approximate Distance (ft)	Cleaning Frequency*	Last Cleaning	Spot Check Frequency	Average Workers Needed	Total Hours	Cleaning Responsibility	
REACH I/D									
4A-0140	4A-0010	1197	10 years	2009	1 year	3	3	SAWPA	
REACH IV-A									
4A-0080	4A-0300	1507	1 years	2012	2 years	3	189	ELJA	
4A-0300	4A-0180	2119	1 years	2012	2 years	3	34	SAWPA	
4A-0180	4A-0010	1658	1 years	2011	2 years	3	174	SAWPA	
REACH IV-B									
4B-0090	4B-0790	1417	1 year	2016	6 months	3	182	SAWPA	
4B-0790	4B-0590	606	1 year	2016	6 months	3	69	SAWPA	
4B-0590	4B-0490	388	1 year	2016	6 months	3	42	SAWPA	
4B-0490	4B-0190	1436	5 years	2011	1 years	3	169	SAWPA	
4B-0190	4B-0010	1596	5 years	2011	1 years	4	220	SAWPA	
REACH IV-D									
4D-1650	4D-1260	2739	1 years	2007	1 year	3	283	SAWPA	
4D-1260	4D-1160	2722	1 years	Never	1 year	3	24	SAWPA	
4D-1160	4D-0750	2744	1 years	2012	1 year	3	291	SAWPA	
4D-0750	4D-0600	9200	1 years	2012	1 year	3	133	SAWPA	
4D-0600	4D-0410	12628	1 years	2009	1 year	3	144	SAWPA	
4D-0410	4D-0010	34101	1 years	2012	1 year	3	358	SAWPA	
REACH IV-E									
4E-0590	4E-0270	10301	1 years	2007	1 years	3	102	SAWPA	
4E-0270	4E-0130	12200	5 years	2009	1 year	3	144	SAWPA	
4E-0130	4E-0010	2725	10 years	2012	5 years	3	172	SAWPA	

\* Different cleaning frequency. Cleaning schedule will be adjusted according to spot check observations.

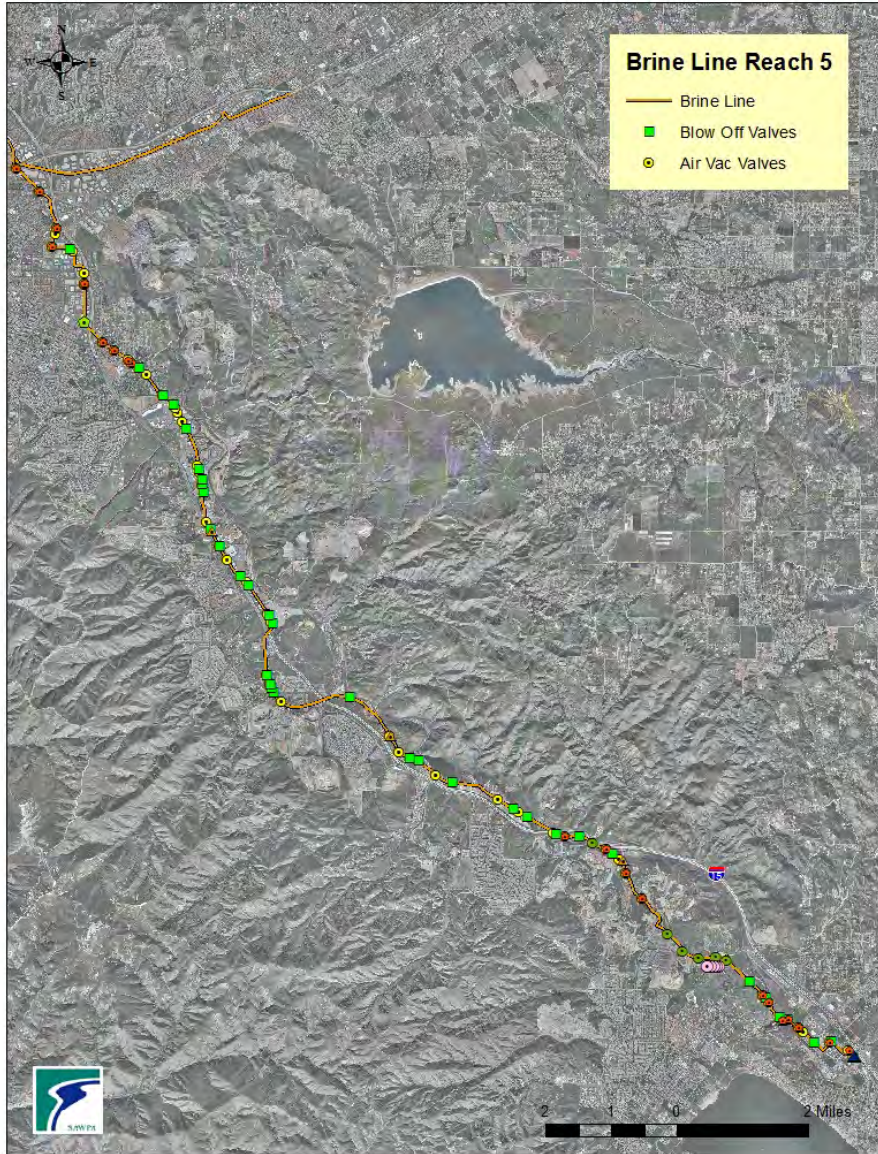
Siphons									
Name	Reach	Beginning MH	Ending MH	Length (ft)	Cleaning Frequency	Last Cleaning	Cleaning Responsibility		
Chinoline	IV-A	4A-0370	4A-0360	101	6 months	Sep-13	SAWPA		
Temescal	IV-B	4B-1000	4B-0490	1778	6 months	Dec-12	SAWPA		
Osilami	IV-D	4D-0300	4D-0350	783	6 months	Jan-13	SAWPA		
Felipar	IV-D	4D-1010	4D-0880	217	6 months	Feb-13	SAWPA		
Rockholow	IV-D	4D-0670	4D-0840	833	6 months	Feb-13	SAWPA		
Bain (Carrizillo/Collesano)	IV-D	4D-0880	4D-0850	294	6 months	Feb-13	SAWPA		
Ballegrave	IV-D	4D-0730	4D-0700	197	6 months	Feb-13	SAWPA		
Schiesman	IV-D	4D-0360	4D-0340	402	6 months	Feb-13	SAWPA/WMWD		
Shivner	IV-D	4D-0200	4D-0190	42	6 months	Nov-12	SAWPA		
Euclid	IV-D	4D-0050	4D-0030	621	6 months	Feb-13	SAWPA		
La Cadena	IV-E	4E-0190	4E-0180	280	12 months	Jan-18	SAWPA		
Warm Springs	IV-E	4E-0020	4E-0010	377	6 months	Jul-13	SAWPA		

# Brine Line Reach 5

54 - Air Release &

Vacuum Valves

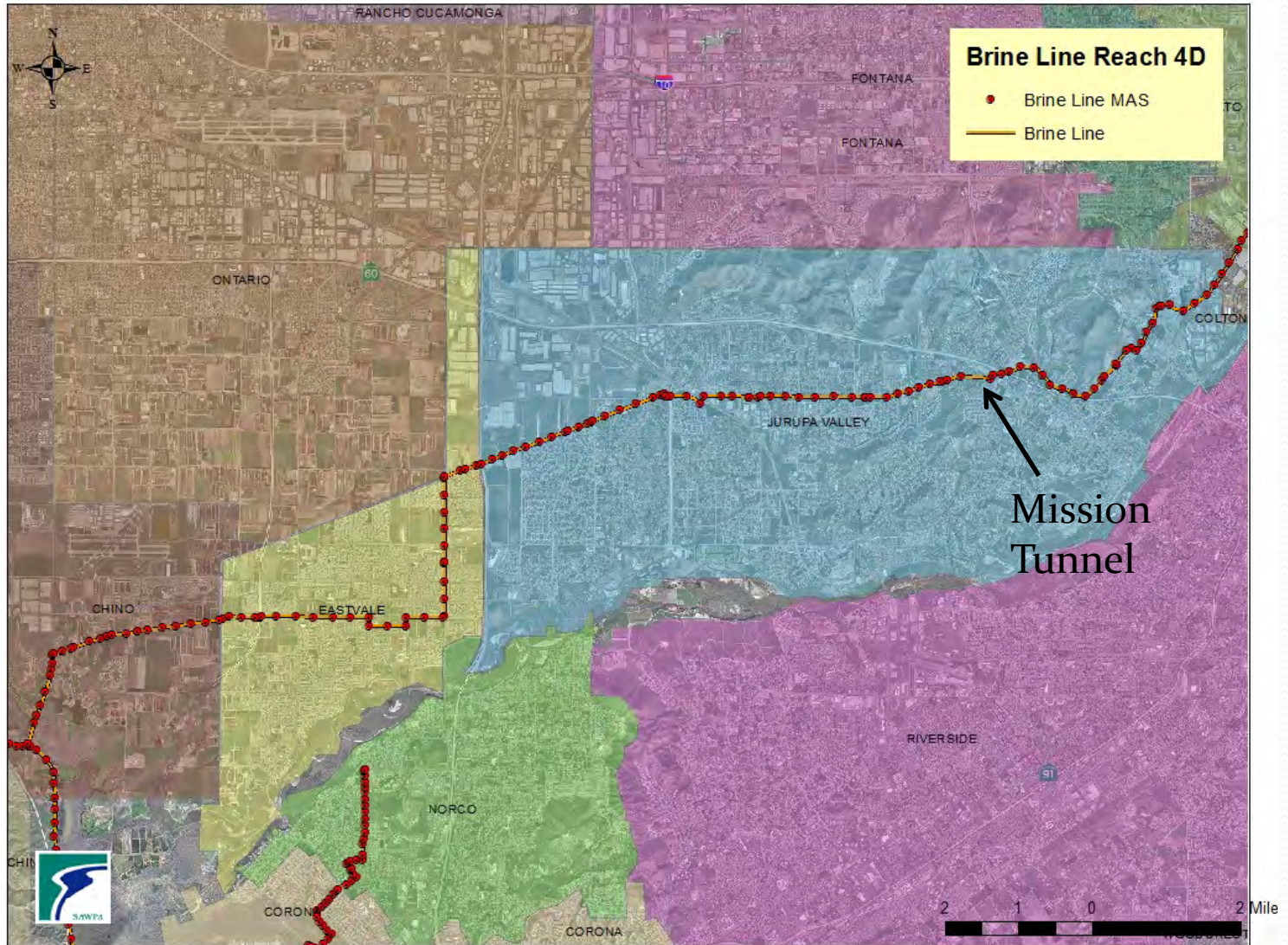
36 – Blow-off Valves



# Reach 4A – 4B Prado Basin



# Reach 4D



# Sediment Traps – 2 locations



Euclid Avenue (SR-83)



Schleisman Road (Eastvale)

# Reach 4B Upper



## Brine Line Reach 4B Upper

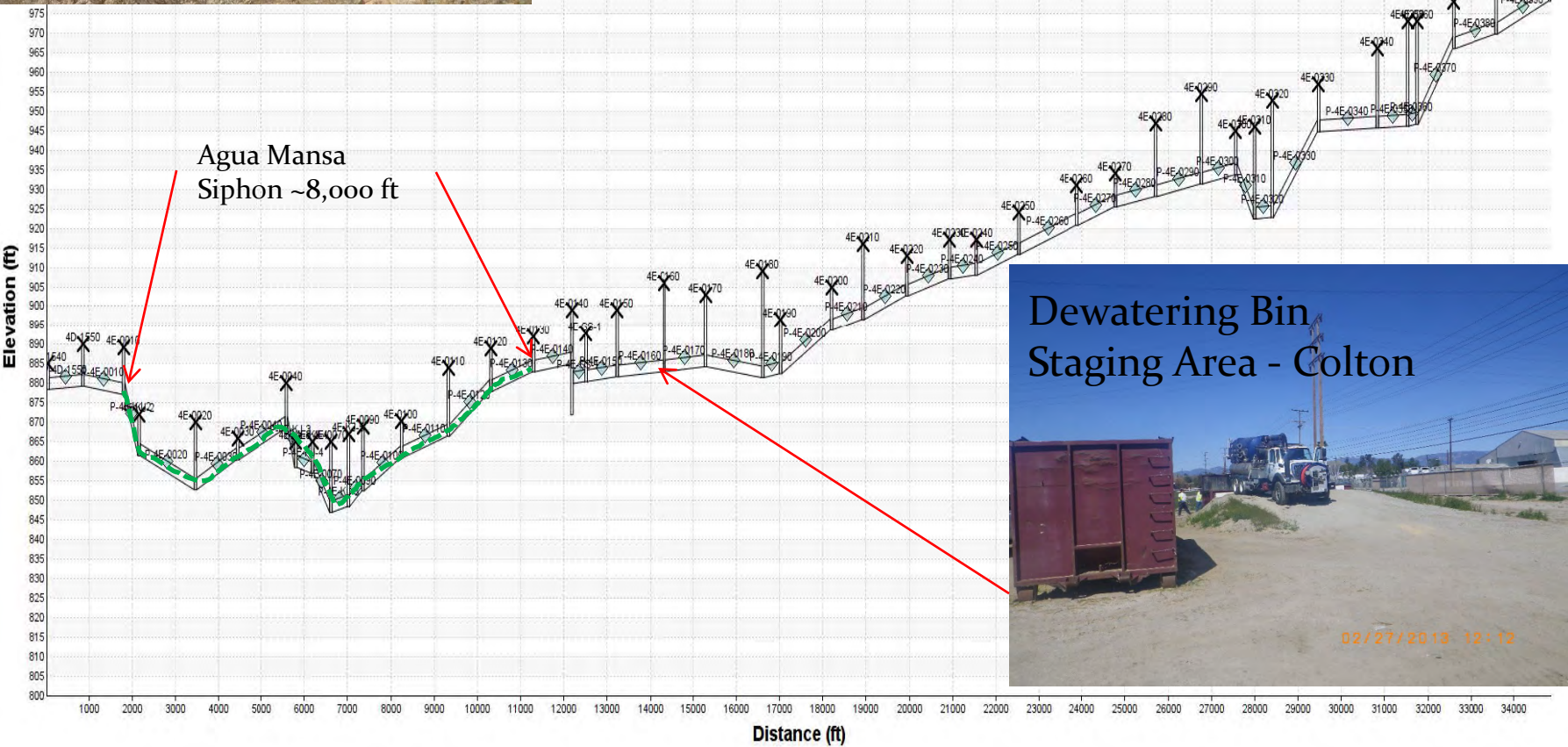
● Brine Line MAS

— Brine Line



# Reach 4E

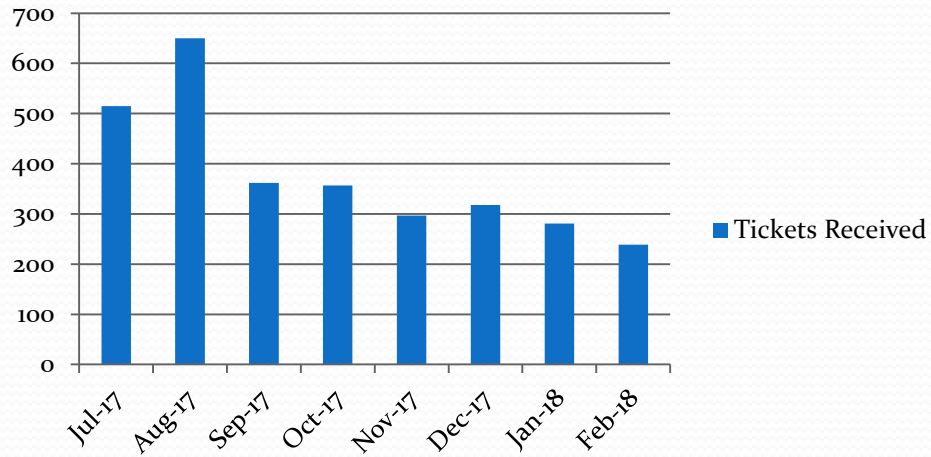
## Reach 4E Hydraulic Profile





# USA DigAlerts

## USA DigAlert FY17-18



# USA DigAlert GIS Application

www.sawpa.net/sari/sari.htm

Tools

- Brine Line Tools
  - LandUse
  - Service Area
  - Charts
  - Record Drawings
  - DigAlert
  - Mark
  - Find
  - ReOpen
  - Summary
  - Work Hours
  - Inspections
  - Open/Close
  - Service Requests
  - Equipment
  - Easements
  - SSO
  - Facility Status

UnMarked Tickets

Filter

Open Tickets

CO	Priority	Type	ID	Ticket	Address	Date Rcvd	Respond By	Company
	NORM	NEW	32487	<a href="#">A180610371</a>	SCHLEISMAN RD	03/02/2018 9:46 AM	03/06/2018 5:01 PM	KANA SUBSURFACE ENGINEERING
	NORM	NEW	32622	<a href="#">A180790528</a>	I-15	03/20/2018 10:55 AM	04/02/2018 6:00 AM	SKANSKA-AMES JV
	NORM	RXMT	32623	<a href="#">A180790528</a>	I-15	03/20/2018 10:59 AM	04/02/2018 6:00 AM	SKANSKA-AMES JV
	NORM	NEW	32670	<a href="#">A180851561</a>	PINE AVE	03/26/2018 3:59 PM	03/28/2018 5:01 PM	L & S CONSTRUCT
	RUSH	NEW	32678	<a href="#">A180880670</a>	MAGNOLIA AVE	03/27/2018 10:55 AM	03/29/2018 5:01 PM	EARTH TEK ENGINEERING
	NORM	NEW	32691	<a href="#">A180881536</a>	EL RIVINO RD	03/27/2018 4:06 PM	03/29/2018 5:01 PM	OPTIMUM INC
	NORM	RXMT	32692	<a href="#">A180881536</a>	W AGUA MANSARD	03/27/2018 4:15 PM	03/29/2018 5:01 PM	OPTIMUM INC
	NORM	NEW	32693	<a href="#">A180881546</a>	W AGUA MANSARD	03/27/2018 4:17 PM	03/29/2018 5:01 PM	OPTIMUM INC
	NORM	NEW	32684	<a href="#">A180970340</a>	211 W RINCON ST	03/28/2018 9:23 AM	03/30/2018 5:01 PM	CREW INC

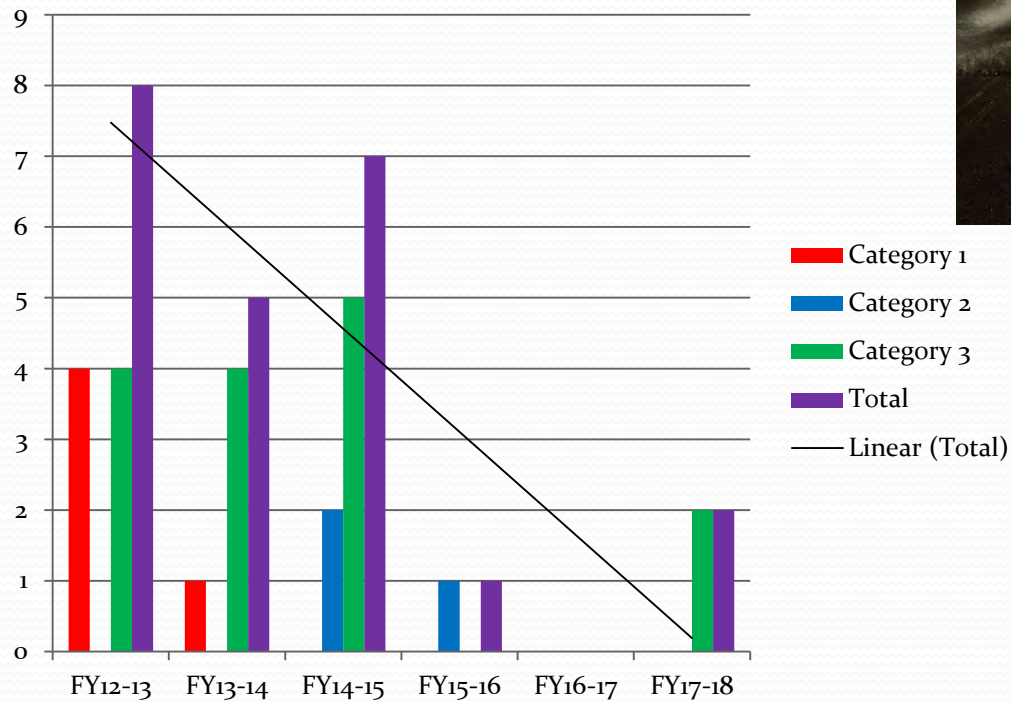
No Tickets: 17      No Update Tickets: 0      [Clear Update Tickets](#)

FollowUp Tickets

County of Riverside, San Bernardino County, Bureau of Land Management, Esri, HERE, Garmin, USGS, NGA, EPA, USDA, NPS

11:06 AM 3/29/2018

# Sewer System Overflows (SSO)





# Brine Line Operations Center

# Brine Line Service Contracts



# Focus of SAWPA Field Staff

