

Disadvantaged Community Involvement (DCI) Policy Principles and MOU

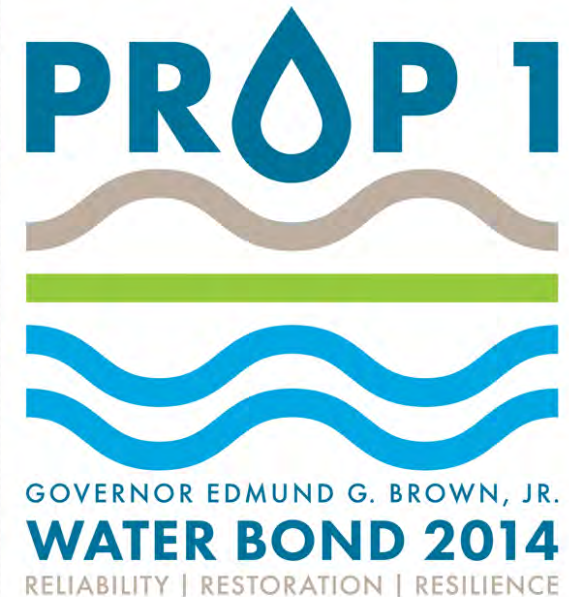
Mark R. Norton PE, LEED AP
Santa Ana Watershed Project Authority

February 6, 2018



Proposition 1 IRWM Grant Program

- 10% of the Funding defined for Santa Ana River Watershed is contracted for Disadvantaged Community Involvement (DCI) Program - \$6.3 million over three years
- DCI ensures that members of disadvantaged communities, economically distressed areas, and underrepresented communities are able to participate in IRWM Planning
- DCI grant program will develop projects for implementation that support needs.



OWOW Plan Update 2018

Goals and Objectives

Goal:

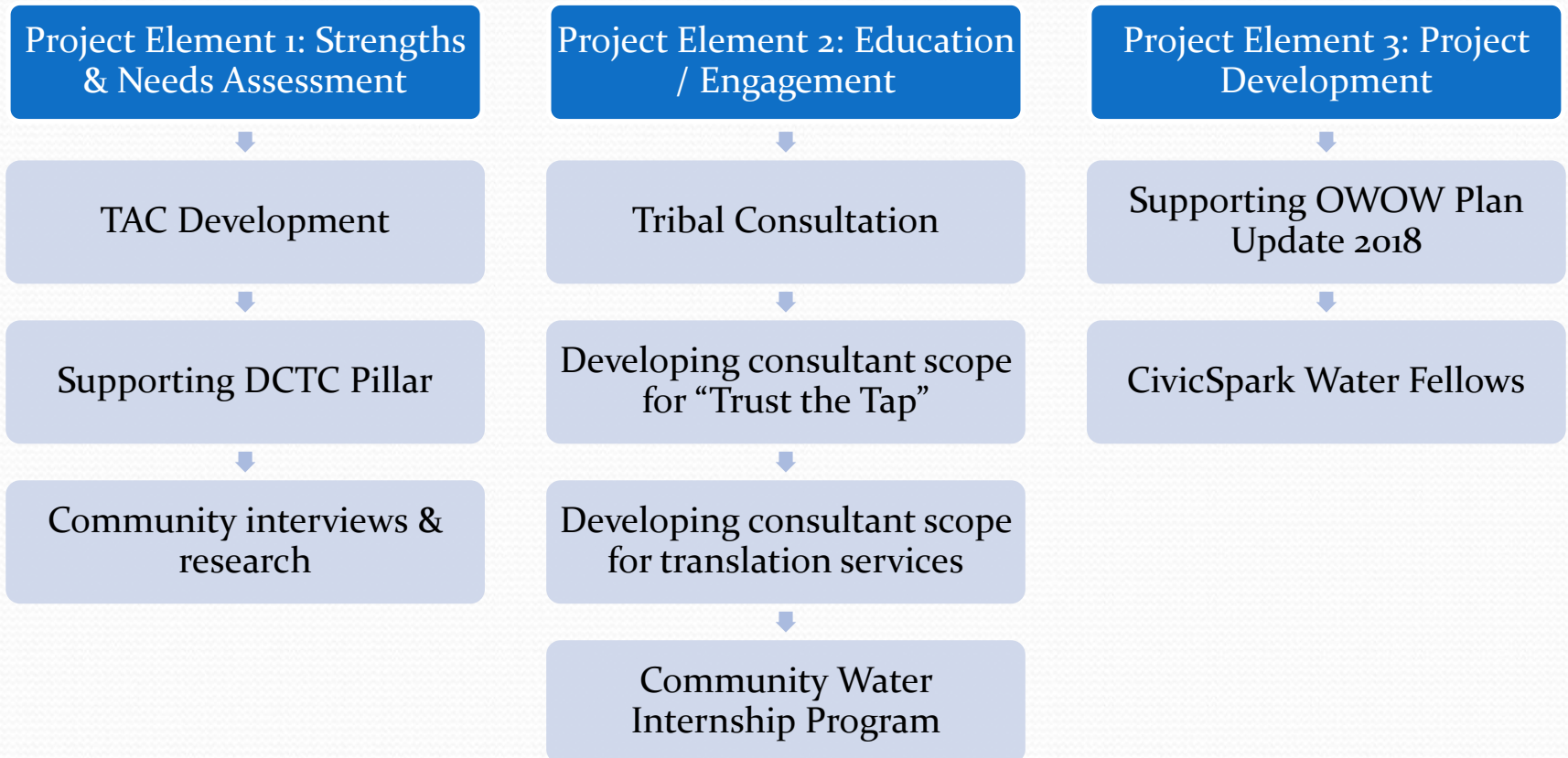
Engage with members of disadvantaged communities and associated supporting organizations to diminish environmental injustices and their impacts on the watershed.

Objectives:

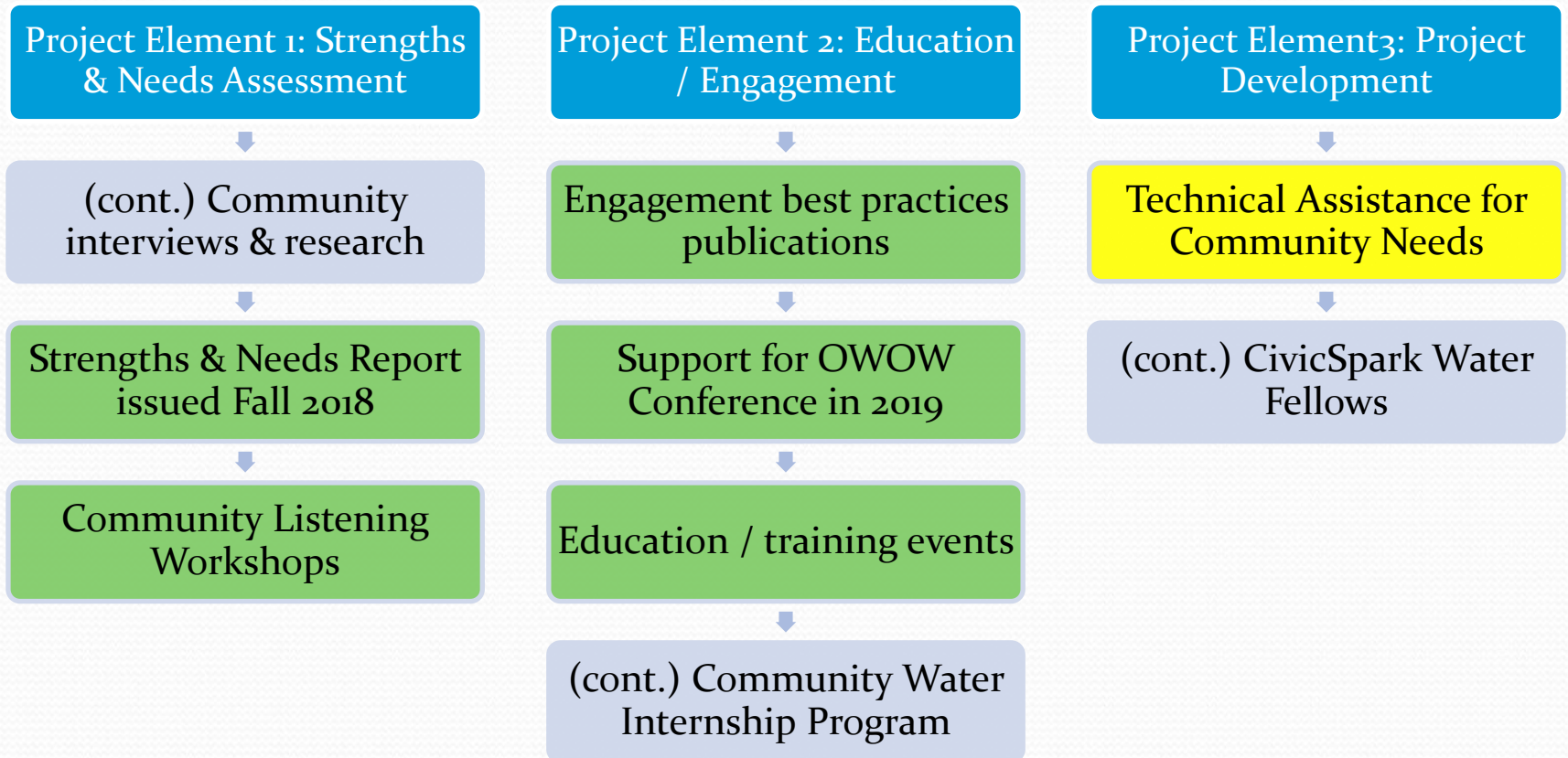
- Adopt best-practices for environmental justice action throughout water management
- Analyze and confront unequal community vulnerabilities to climate impacts
- Ensure community voices help identify strengths and needs
- Strive to include community cultural values in watershed management decision-making
- Support broad-based collaborative alleviating homelessness and its impacts on the watershed



Ongoing Activity in DCI Program



Next Steps in DCI Program

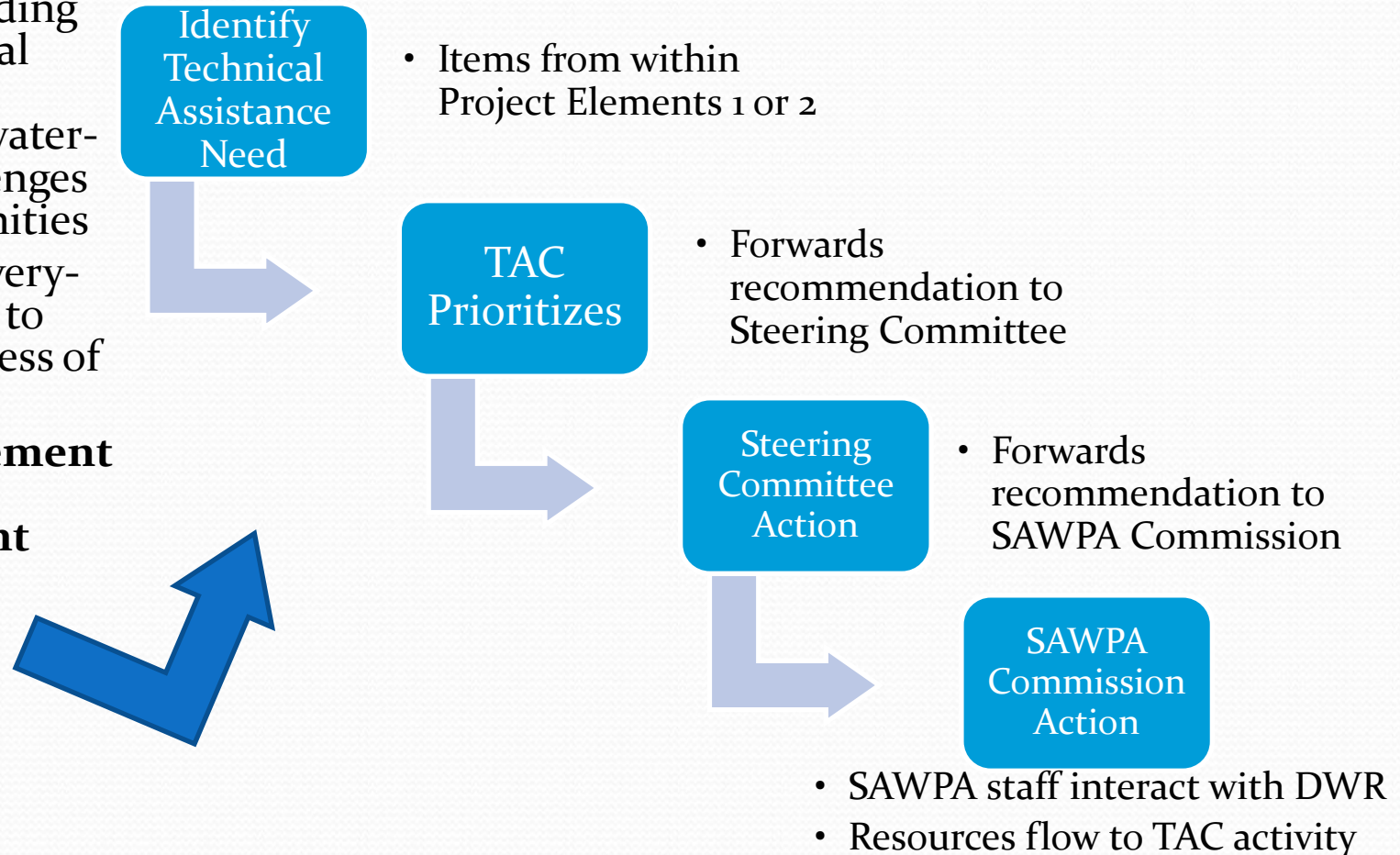


Technical Advisory Committee – 9 members

- Expertise from the five program partners:
 - Cal State University
 - California Rural Water Association
 - Local Government Commission
 - Water Education Foundation
 - University of California Irvine
- Four outside members
 - Accepted invitation:
 - Maria Mehranian (Cordoba Corp.)
 - Proposed invitees:
 - Orange County Public Works
 - Eastern Municipal Water District
 - Riverside County Flood Control District

DCI Program Technical Advisory Committee

- Currently six members, adding four additional experts in community water-related challenges and opportunities
- TAC meets every-other-month to discuss progress of program
- **Program Element 3 – Project Development**



Policy Principles – Attachment 1

- SAWPA Mission from Strategic Plan
- Supports SAWPA's Disadvantaged Communities Involvement Program
 - 1) Explore the strengths and needs of overburdened communities in the watershed
 - 2) Identify needs and capacity within water agencies and DCI communities through engagement and education
 - 3) Ensure integrated water management projects that are supported by communities are made ready for implementation
- Supports DWR Grant Agreement definition of process for allocating resources to technical assistance or program/project development opportunities identified during the program

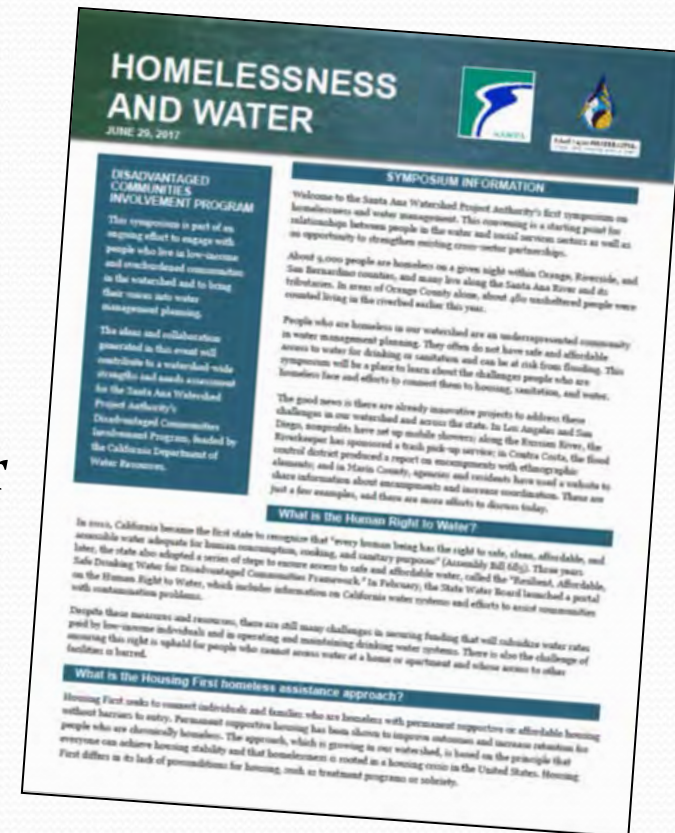




Memorandum of Understanding between SAWPA and City of Riverside

Homelessness Symposium #1

- Conducted in June, 2017
- Started multiple paths of follow-up
 - Representatives from several cities interested in further discussions
 - Discussions about the nexus of water management and homelessness
 - Non-profit partners developing new programs
 - Interest among participants to consider next steps



Homelessness Symposium #1

- Generally, the first symposium had experts in homelessness in the panels, and water managers in the audience.
- Started new conversations, initiated new relationships.
- Since June, homelessness issue has continued to grow as a public policy concern in the watershed.



Links between Water and Homelessness

- Water quality degradation (trash, bacteria)
- Hydromodification (damming, debris)
- Riparian / Aquatic habitat (physical disturbance, fire)
- Flood risk (unsheltered people)
- Access to drinking water
- Access to sanitation (sanitary sewer, hygiene)
- Repurposing of multi-use recreation facilities



Homelessness Symposium #2

- Conducted on Dec. 7, 2017 in Fullerton
- Panels discussed ties between water management and efforts to alleviate homelessness
- Emilio Ramirez, City of Riverside Deputy Director of Community & Economic Development Department was panelist



Homelessness & Water

Symposium #2 - Follow Up



- After 1st Symposium, some SAWPA Commissioners approached by City of Riverside to consider collaborative work related to homelessness.
- Meeting held 10/25/17 among several SAWPA Commissioners, SAWPA staff and City of Riverside Housing Authority staff
- Possible MOU to support planning and implementation of a pilot project on improving water quality by relocating people who are homeless from a river location.

Request from City of Riverside to consider MOU with SAWPA (MOU Elements)

• Work together with the Housing Authority of the City of Riverside (“Authority”) on researching and evaluating potential programs and projects

1. Aligning water management goals and identify funding opportunities
2. Working with the Authority through the One Water One Watershed (OWOW)
3. Evaluating with the Authority how a housing first program can provide multiple water and watershed improvements.
4. **Examine methods** to cooperatively develop and seek funding for pilot program that provides unsheltered people living adjacent to Hole Creek
5. Developing one or more long-term programmatic approaches to support integration among water managers and public and private sector social services providers.
6. Regularly meeting to ensure collaborative efforts



No obligation
of DCI funding
is included in
proposed MOU
– collaboration
only

Summary & Recommendation

- Receive input and feedback about
 - 1) Policy principles that describe the implementation of the Disadvantaged Communities Involvement Program
 - 2) Memorandum of Understanding (MOU) with the Housing Authority of the City of Riverside





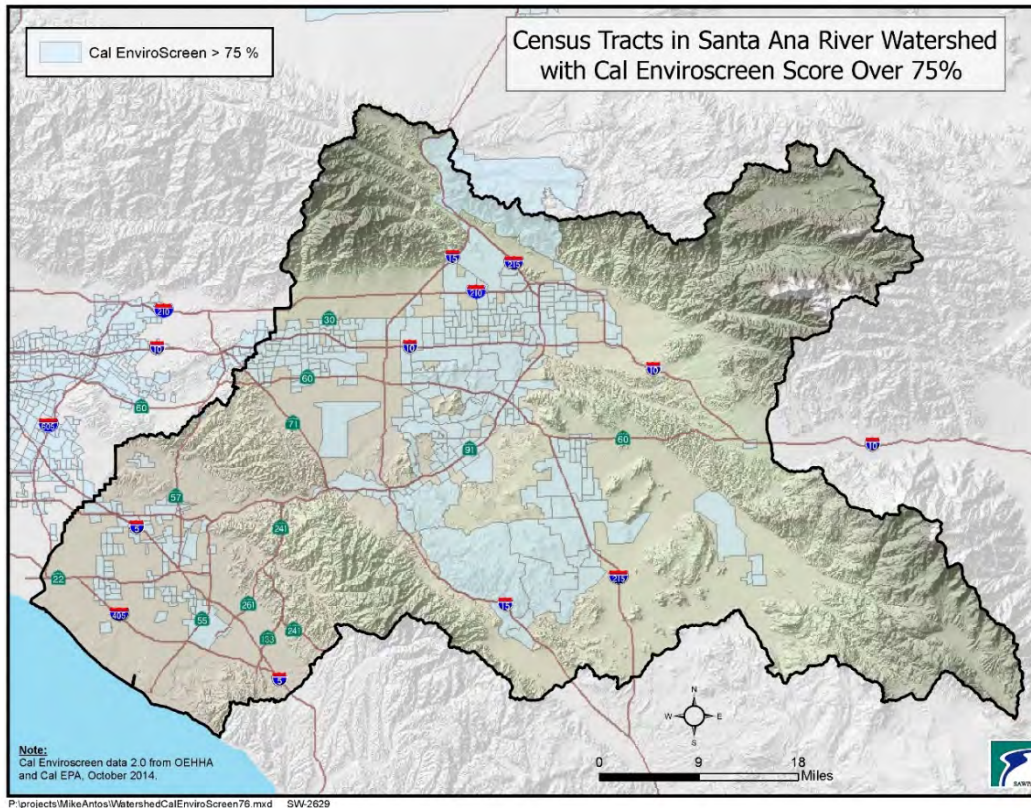
Water Energy Community Action Network

Mike Antos, Ph.D.
Senior Watershed Manager

SAWPA Commission Meeting
February 6, 2018



OWOW Business Line - Critical Success Factors



Distribution of benefits across the watershed fairly and equitably.



Roundtable Business Line - Critical Success Factors



SAWPA's
reputation as a
trusted leader
and administrator.



State of WECAN



Grant admin and program on budget



Following extension granted by DWR, on-schedule for Dec 2018 completion.



MOU Amendment



- ▶ Received a Reclamation grant to extend WECAN benefits to more customers.
- ▶ During enrollment, many customers not eligible for lack of irrigation
- ▶ WVWD authorized \$27,600 to support irrigation repairs / retrofits so customers can be eligible.



Resources

WECAN MOU with WVWD

- ▶ Original:
 - ▶ \$130,000
- ▶ Amendment 1
 - ▶ Added \$742,000
- ▶ Amendment 2
 - ▶ Adding \$27,600

Task Orders for Ecotech

- ▶ TO 1
 - ▶ \$1,300,000
- ▶ TO 2
 - ▶ \$612,000
- ▶ TO 3
 - ▶ \$27,600



The memo recommends:

It is recommended that the Commission approve:

1. A Second Amendment to the Memorandum of Understanding (MOU) with the West Valley Water District
2. Task Order No ECOT397-03 with EcoTech Services, Inc. for an amount not to exceed \$27,600 for irrigation repairs at homes in WVWD service area to ensure they qualify to participate in WECAN Program.



OWOW Proposition 84 2015 Round Grant Agreement



Amendment

Ian Achimore
Santa Ana Watershed Project Authority
Senior Watershed Manager

Agenda Item 5C
SAWPA Commission
February 6, 2018

OWOW 2015 Round Project Amendment

Amendment

Projects in Grant Agreement	Project Proponents
Newhope-Placentia Trunk Sewer	Orange County Sanitation District
2015 Integrated Watershed Protection Program	Riverside County Flood Control and Water Conservation District (District)
Santa Ana River Conservation and Conjunctive Use Program	Eastern Municipal Water District Inland Empire Utilities Agency Orange County Water District San Bernardino Valley Municipal Water District Western Municipal Water District

No Request

Requesting

Requesting*

*Approved by Commission December 19, 2017

January 2018 OWOW Steering Committee Meeting



Committee received an update on the two projects and their requested amendments

Projects

2015 Integrated Watershed
Protection Program

Santa Ana River Conservation
and Conjunctive Use Program

2015 Integrated Watershed Protection Program





2015 Integrated Watershed Protection Program

Description of Component

Benefits
(Acres protected
or water supply)

- * ~~San Jacinto River Levee, Stage 4, Phase 1: will install an approximately 2.5 mile long and approximately 10 to 12 foot high river levee in western Riverside.~~ 967 acres
- * Bautista Optimization Pond: will expand upon the existing recharge facilities, which include a series of 6 recharge ponds constructed adjacent to Bautista Channel. 1,200 acre feet per year
- * Beaumont Master Drainage Plan (MDP) Line 16: will install an approximately 6,800 foot reinforced concrete water conveyance pipeline. 547 acre feet per year



San Jacinto River Levee Component

- * Issue of acquiring cost share of \$2.3M to \$7.6M for 117 acres of land needed for right-of-way
- * Replacement component can meet existing deadline



San Jacinto River Near State Street



Replacement Component

Description of Component

Benefits
(Acres protected)

- * Sunnymead MDP Line B (Heacock Channel), Stages 3 and 4: will improve an existing earthen channel to 100-year concrete facility. As a result of contaminated groundwater, the project design prevents potential exposure of contaminated ground water to surface water.

28 acres
FEMA Zone A

200 acres
FEMA Zone D



2015 Integrated Watershed Protection Program Budget

Component	Grant Amount	Total Cost
San Jacinto River Levee, Stage 4, Phase 1	\$3,660,000	\$22,564,000
Bautista Optimization Pond	\$174,302	\$3,397,000
Beaumont MDP Line 16	\$1,220,000	\$5,179,600
Sunnymead MDP Line B, Stages 3 and 4	\$3,660,000	\$19,309,925
Total Before Sunnymead Replacement	\$5,054,302	\$30,494,000
Total With Sunnymead Replacement	\$5,054,302	\$27,886,525

Recommendation and Next Steps

Recommendation: Direct staff to execute an amendment to the Grant Agreement between SAWPA and the Department of Water Resources to reflect the revised 2015 Integrated Watershed Protection Program.

Next Steps: Bundle two project amendments into one request to DWR.

Lake Elsinore Quitclaim of Easement

Item 5.D.

February 6, 2018

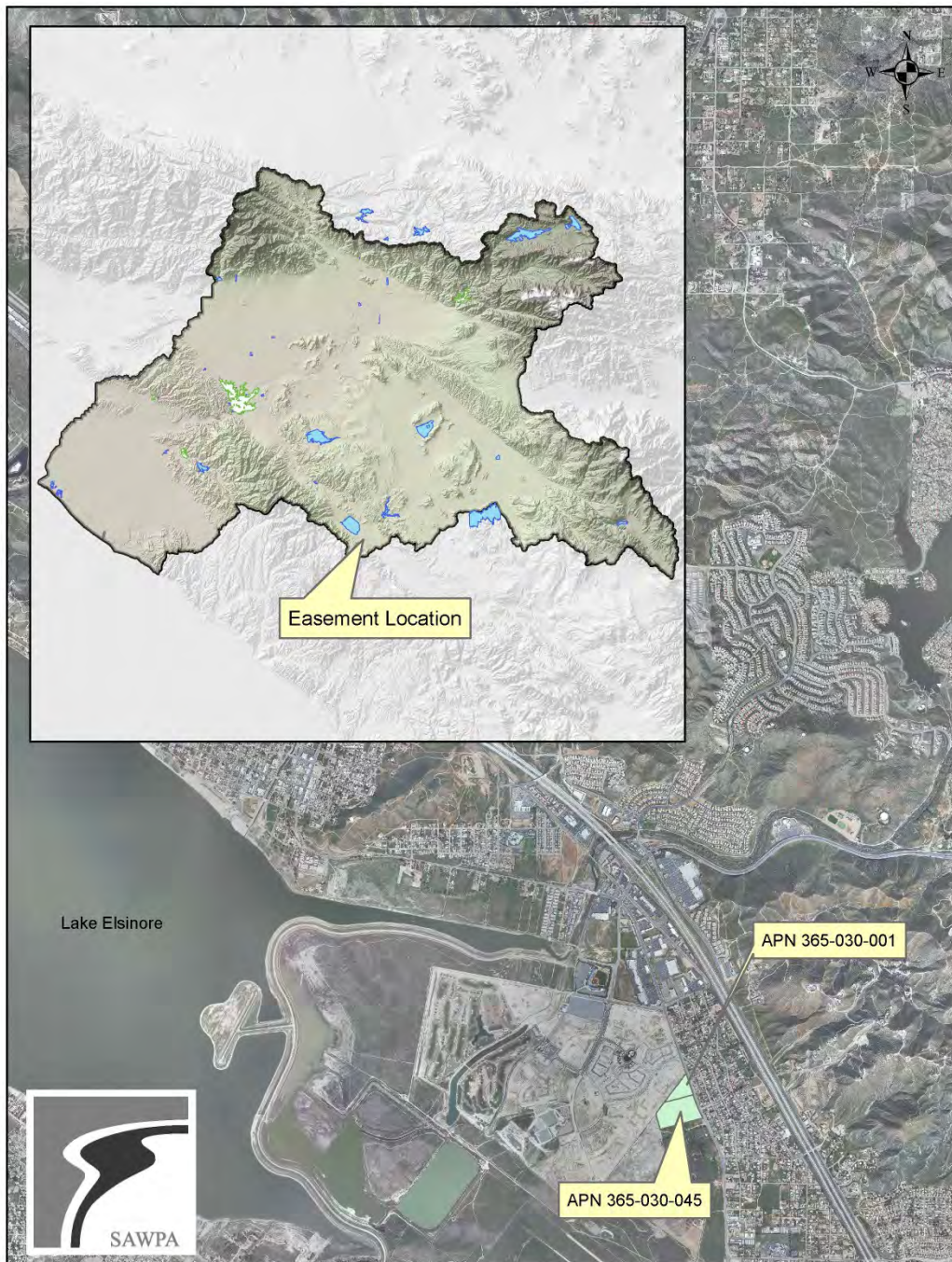
Quitclaim of Easement

Recommendation to SAWPA Commission

- Authorize the General Manager to Quitclaim an existing easement for utility and roadway purposes to the City of Lake Elsinore.

Quitclaim of Easement

- SAWPA obtained a flooding easement (elevation 1,265') and an easement for utility and roadway purposes as part of Lake Elsinore Management Authority lake improvement project in 1995.
- SAWPA does not have a need to keep the easement since management of Lake Elsinore is a local responsibility (City of Lake Elsinore and EVMWD)



Quitclaim of Easement

Recommendation to SAWPA Commission

- Authorize the General Manager to Quitclaim an existing easement for utility and roadway purposes to the City of Lake Elsinore.

Questions?

DWR Prop 1 Integrated Regional Water Management (IRWM) Implementation Funding

**Mark R. Norton PE, LEED AP
Santa Ana Watershed Project
Authority**

February 6, 2018

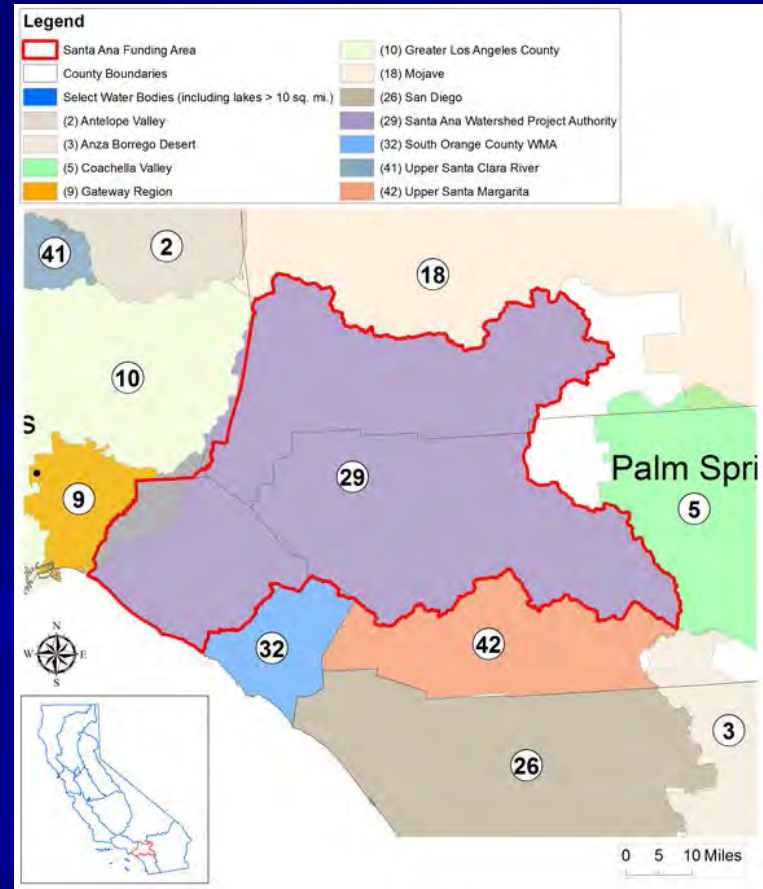


IRWM Funding Areas of Prop 1



OWOW = IRWM

- One Water One Watershed (OWOW) Plan is SAWPA's Integrated Regional Water Management (IRWM) Plan
- SAWPA's service area is the Santa Ana Funding Area
- SAWPA is also the only State recognized IRWM region in this Funding Area (Huge advantage!!)
- Most other Funding Areas have multiple IRWM regions which have to compete for funding



Available Prop 1 IRWM Funding

Funding Areas	P1 Allocation	2% Bond Admin	5% Program Delivery	10% DAC Involvement	10% DAC Projects	Remaining*
North Coast	\$26,500,000	\$530,000	\$1,325,000	\$2,650,000	\$2,650,000	\$19,345,000
San Francisco Bay Area	\$65,000,000	\$1,300,000	\$3,250,000	\$6,500,000	\$6,500,000	\$47,450,000
Central Coast	\$43,000,000	\$860,000	\$2,150,000	\$4,300,000	\$4,300,000	\$31,390,000
Los Angeles	\$98,000,000	\$1,960,000	\$4,900,000	\$9,800,000	\$9,800,000	\$71,540,000
Santa Ana	\$63,000,000	\$1,260,000	\$3,150,000	\$6,300,000	\$6,300,000	\$45,990,000
San Diego	\$52,500,000	\$1,050,000	\$2,625,000	\$5,250,000	\$5,250,000	\$38,325,000
Sacramento River	\$37,000,000	\$740,000	\$1,850,000	\$3,700,000	\$3,700,000	\$27,010,000
San Joaquin River	\$31,000,000	\$620,000	\$1,550,000	\$3,100,000	\$3,100,000	\$22,630,000
Tulare/Kern	\$34,000,000	\$680,000	\$1,700,000	\$3,400,000	\$3,400,000	\$24,820,000
North/South Lahontan	\$24,500,000	\$490,000	\$1,225,000	\$2,450,000	\$2,450,000	\$17,885,000
Colorado River	\$22,500,000	\$450,000	\$1,125,000	\$2,250,000	\$2,250,000	\$16,425,000
Mountain Counties	\$13,000,000	\$260,000	\$650,000	\$1,300,000	\$1,300,000	\$9,490,000
Total	\$510,000,000	\$10,200,000	\$25,500,000	\$51,000,000	\$51,000,000	\$372,300,000

*Remaining Statewide Funding

Planning Solicitation	\$5,000,000
Implementation Solicitations	\$367,300,000
TOTAL	\$372,300,000

Prop 1 Implementation Eligible Projects

Included, but not limited to:

- Decision support tools
- Conjunctive use
- Improvement of water quality
- Storm water resource management
- Surface and underground water storage
- Water conveyance facilities
- Water desalination projects
- Water reuse and recycling
- Water-use efficiency and water conservation
- Watershed protection, restoration, and management projects



Prop 1 Requirements Eligible Applicants to SAWPA OWOW & Funding Match

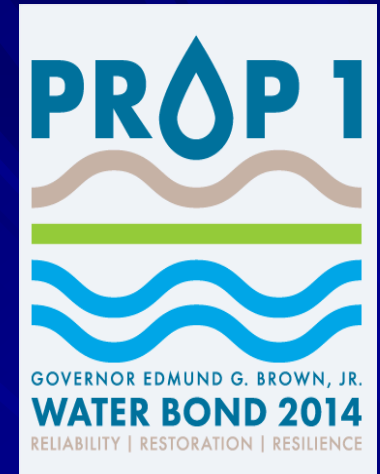
- Public Agencies
- Non-profit Organizations
- Public Utilities
- Federally Recognized Indian Tribes
- California Native American Tribes
- Mutual Water Companies



- Non-State cost share not less than 50% of total project cost
- May be waived for certain projects benefiting Disadvantaged Communities, Economically Distressed Areas & Under Represented Communities

Prop 1 Requirements (Cont.)

- Projects must be included in IRWM Plan (OWOW Plan) and:
 - Respond to climate change and
 - Contribute to regional water security (water supply reliability)
- Projects will address the most critical statewide needs by funding area and priorities for public funding
- Priority will be given to projects that leverage non-State funding or produce greatest public benefit
- Special consideration for projects that:
 - Achieve multiple benefits
 - Employ new or innovative technology or practices



DWR Principles for Change in Process

- Improve engagement between DWR and the IRWM regions to discuss how proposed projects will help the region and Funding Area
- DWR seeks opportunity to clarify and understand projects in an application and ensure that the most critical needs within a Funding Area are met
- Maintain competition in the process but regional competition **may** be accepted for those Funding Areas with one IRWM region like SAWPA
- Ensure projects developed through DCI Program have greatest chance to receive Implementation Grant Funding



Prop 1 Priorities

- Priority will be given to projects that leverage non- State funding or produce greatest public benefit
- Special consideration for projects that:
 - Cover a greater portion of the watershed
 - Achieve multiple benefits and
 - Employ new or innovative technology or practices



Proposed Revised Process

- Step 1 – Applicant presentation/consultation
- Step 2 – DWR response
- Step 3 – IRWM Region submits application
- Step 4 – DWR Evaluates and makes Draft Funding Recommendation

Step 1– Applicant Presentation/Consultation

■ Applicant presents:

- Region description and critical needs
- Potential projects that could address those needs and demonstrates how they are eligible
- How past IRWM funding has contributed to addressing the needs and how the proposed projects build on past projects
- Nature of stakeholder coordination

■ Critical Need Examples

- Water Supply, Water Quality, Flood Management, etc.

Step 2– DWR Response

- DWR reviews potential projects
- Does not score, but provides applicant with a list of observations and comments

Step 3 – Application

- Applicant may drop/replace/adjust projects based on DWR's review
- IRWM Region submits application

Step 4– Application Evaluation

- DWR evaluation produces project specific and overall proposal scores
- DWR makes Draft Funding Recommendation
 - Similar to existing process, DWR will not drop individual eligible projects from a proposal

Meeting with DWR Upper Mgt - 1/22/18

- Eliminate scoring for Funding Areas with just one IRWM and Funding Areas with funding agreements
 - DWR staff still seems receptive
- Flexibility on use of disadvantaged community implementation grants after DCI Program is complete
 - DWR staff still seems receptive to allowing IRWM to shift grant timing to complete disadvantaged community involvement

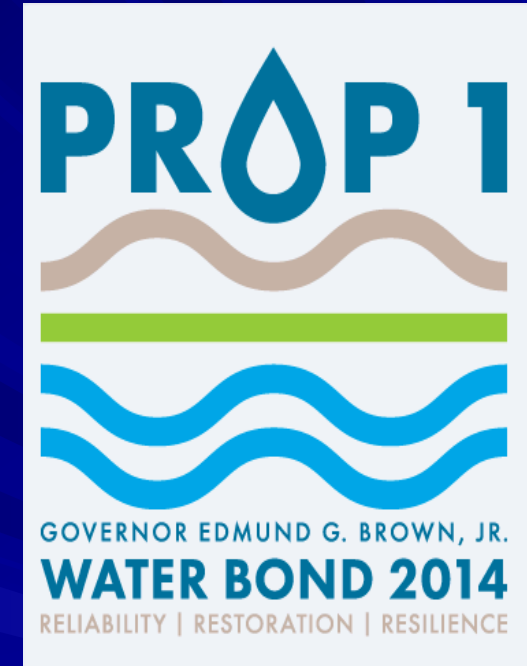
Prop 1 IRWM Grant Funding

■ Future OWOW grant applications

- 2018-19
 - 1st Round Implementation Projects - \$23 million
- 2020-21
 - 2nd Round Implementation projects - \$23 million
- Or 2018-2021
 - Funding allocation and timing negotiated with DWR

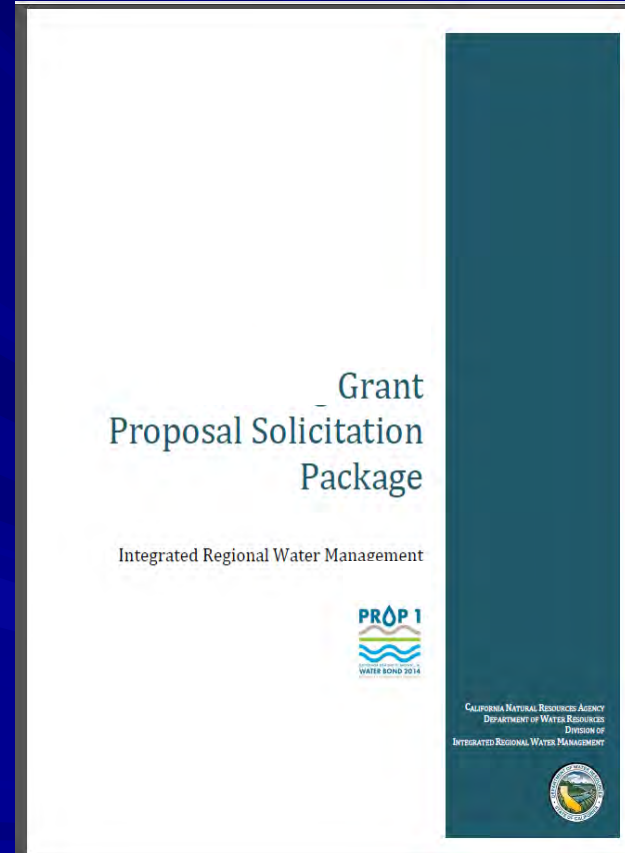
■ Disadvantaged Communities projects

- \$6.3 million split between these two rounds (?)
- Or funding allocation and timing negotiated with DWR



Meeting with DWR Upper Mgt - 1/22/18

- Roundtable of Regions will see Conceptual Grant Application PSP (Proposal Solicitation Package) in Feb. 2018
- Official release of draft PSP Apr. 2018
- Final release of PSP in June 2018

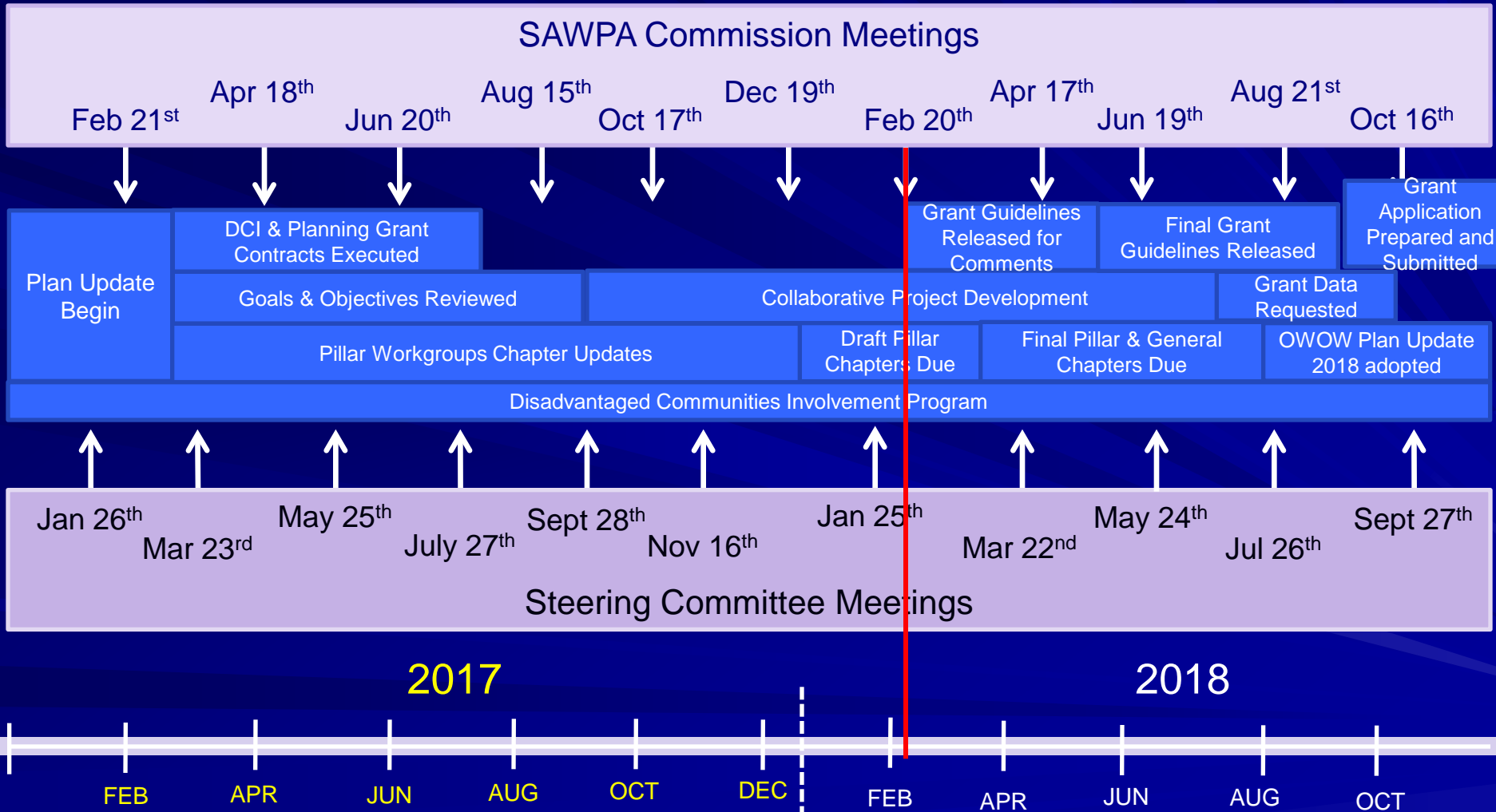


Schedule - Future Prop 1 IRWM Implementation Grants Program

Program	Draft Grant Application (PSP)	Final Grant Application (PSP)	Grant Application Due to DWR	Execute Agreement
Prop 1 Round 1 Implementation & Disadvantaged Communities Implementation	April 2018	June 2018	Late Fall 2018	Winter 2018/2019
Prop 1 Round 2 Implementation & Disadvantaged Communities Implementation	Winter 2019/2020	Spring 2020	Summer 2020	Fall 2020
Prop 1 Rounds 1 & 2			Allocation and timing of both rounds negotiated with DWR	

OWOW Schedule

DWR Implementation Grant Request Due Date – Summer 2018



Questions?

SAWPA Website

New Website Benefits



Reasons for New Website

- Security
 - Old Software version on old site will not longer be supported March 1st 2018
- Updated look and technology
 - Current Software version
 - Supports latest security measures
 - Supports latest features
- Mobile Friendly
 - Runs the same on all cellular phones, Android tablets and Apple tablets.

Website Goals

- ▶ **Better Access to more Information**
 - Minimize number of clicks to get to info
- ▶ **Allow Staff Knowledge Experts to edit Website**
 - Easy to use editor
 - Faster content updates
- ▶ **Better use of Images**
 - Use images to improve navigation
- ▶ **Better use of Story Maps and GIS**
 - Take advantage of improved GIS Technology
- ▶ **Integrate Calendar with Outlook**

Live Demonstration

▶ www.sawpa.org





SANTA ANA WATERSHED PROJECT AUTHORITY

11615 Sterling Avenue, Riverside, CA 92503 Monday Through Every Other Friday 8 am to 5 pm

- ABOUT US
- INLAND EMPIRE BRINE LINE
- OWOW
- PLANNING
- GOVERNANCE
- CALENDAR
- MORE

Inland Empire Brine Line

The Inland Empire Brine Line (Brine Line) is a unique and indispensable resource for the Inland Empire region, providing a facility for exporting salt from inland areas to the ocean.

YOUR COMPANY

Companies who are too far to connect directly to the Brine Line haul their wastewater to one of our four collection stations.

COLLECTION STATION

YOUR COMPANY

Companies close enough to connect to the Brine Line can discharge directly to it.



SAWPA MEMBER AGENCIES

The Santa Ana Watershed Project Authority (SAWPA) is a Joint Powers Authority, classified as a Special District (government agency) in which it carries out functions useful to its member agencies. The agreements formalizing the current agency were signed in 1974 and went into effect in 1975.

Eastern Municipal

Inland Empire Utilities

Orange County Water

San Bernardino Valley

Western Municipal



Background on Story Maps

The following logos are linked to an interactive story map. Click on them to discover what SAWPA is all about.



Santa Ana Watershed Project Authority

The Santa Ana Watershed Project Authority is joint power authority under California law, composed of five member agencies; Eastern Municipal Water District, Inland Empire Utilities Agency, Orange County Water District, San Bernardino Valley Municipal Water District, and Western Municipal Water District. Learn more about our history, present, and future.





Existing Customers

[Home](#) | [Existing Customers](#)

The following links are our recent documents affecting the Inland Empire Brine Line. If you would like to be contacted next time there is an update to any of the documents below, please contact SAWPA at (951) 354-4220.

Current Ordinance and Resolution for the Inland Empire Brine Line

- **Resolution No. 2015-3** Establish the Rates (For the Treatment and Disposal of Non-Reclaimable Wastewater, Temporary Domestic Wastewater, Collection Station Discharges, and Charges for Suspended Solids and Biochemical Oxygen Demand) in the Inland Brine Line (Effective 7/1/2015).
- **Ordinance No. 7** Establish Regulations for Use of the Inland Brine Line (Effective 10/15/2013)

Forms

[Trucker Permit Holders for Trucked Disposals/ Liquid Waste Haulers](#)

Documents

[Brine Line Overflow Emergency Response Plan – Winter 2015](#)
[Flow, Salt, BOD and TSS for the Brine Line Over Time](#)

Brine Line Scale and Solids Imbalance

[Memo – 2010 Monitoring.Final March WQ Sampling \(CDM 8/9/10\)](#)
[Memo – Draft Phase 2 Solids Control Study Bench Testing Results \(CDM 11/8/10\)](#)
[Memo – Draft Solid Control Alternative Conceptual Costs \(CDM 4/1/11\)](#)
[Brine Line TSS Formation Workshop \(12/20/11\)](#)

Salinity Management Program

[Summary Report – July 2010](#)
[Phase 1 Salinity Management Plan – January 2010](#)
[Phase 2 Planning TM – May 2010](#)
[Phase 3 Operations TM – May 2010](#)
[PDR – Final Drawings – IVA Lower Drawing – IVA Upper Drawing – IVB](#)
[Brine Line Marketing Plan – Final Draft, August 2009](#)
[Final Sewer System Management Plan Volume 1](#)
[Final Sewer System Management Plan Volume 2](#)
[Final Sewer System Management Plan Executive Summary](#)
[Brine Line Business Plan](#)
[Brine Line Overflow Emergency Response Plan – December 2014](#)
[Brine Line Planning Study – December 2002](#)



SANTA ANA WATERSHED PROJECT AUTHORITY

11615 Sterling Avenue, Riverside, CA 92503 Monday Through Every Other Friday 8 am to 5 pm

- ABOUT US
- INLAND EMPIRE BRINE LINE
- OWOW
- PLANNING
- GOVERNANCE
- CALENDAR
- MORE

Task Forces

Home / Task Forces

SAWPA is well suited to address complex issues in the Santa Ana River Watershed due to its success in conducting numerous collaborative efforts; working closely with Federal, State and local agencies; and obtaining positive results for a variety of complex, sometimes controversial water resource projects and programs. Utilizing the capable skills of SAWPA's support staff, multi-agency agreements are developed, consultant contracts are managed, and discussion meetings are administered. The end product of these efforts are successful projects and workshops that represent the best in collaboration and facilitation support services.



Arundo Habitat Management

SAWPA works in conjunction with its partners, primarily the Santa Ana Watershed Association (SAWA), and Riverside County Park and Open Space District, toward the goal of eliminating invasive cane, Arundo donax (Arun...

[Read More](#)



Basin Monitoring Program Task Force

As an outgrowth of the Nitrogen/TDS Task Force, the agencies responsible for implementing the Basin Plan Amendments formed the Basin Monitoring Task Force, and SAWPA was identified to administer/facilitate that effort.

[Read More](#)



Emerging Constituents Task Force

In April 2008 the Santa Ana Regional Water Quality Control Board endorsed the voluntary Cooperative Agreement submitted by several water agencies serving the area. In this Agreement, the water agencies proposed to develop a...

[Read More](#)



Forest First

As home to the headwaters of the Santa Ana River, the San Bernardino and Cleveland national forests encompass approximately 33% of the Santa Ana watershed's land mass. These forest areas also receive 90% of annual precipitation. The Forest First program...

[Read More](#)





SANTA ANA WATERSHED PROJECT AUTHORITY

11615 Sterling Avenue, Riverside, CA 92503 Monday Through Every Other Friday 8 am to 5 pm

- ABOUT US
- INLAND EMPIRE BRINE LINE
- OWOW
- PLANNING
- GOVERNANCE**
- CALENDAR
- MORE

Agenda and Minutes

Home / Board of Commissioners / Agenda and Minutes

- SAWPA Commission Board
- OWOW Steering Committee**
- PA 22 Committee
- PA 23 Committee

SAWPA Commissioner Board is composed of representatives from each of the five member agencies.

San Bernardino Valley Municipal Water District
Susan Lien Longville
Chair

Gil Navarro
Alternate Commissioner

Eastern Municipal Water District
Ronald W. Sullivan
Vice Chair

David J. Slawson
Alternate Commissioner

Inland Empire Utilities Agency
Jasmin A. Hall
Secretary-Treasurer

Kati Parker
Alternate Commissioner

Western Municipal Water District
Thomas P. Evans
Commissioner

Brenda Dennstedt
Alternate Commissioner

Orange County Water District
Philip L. Anthony
Commissioner

Bruce Whitaker
Alternate Commissioner

MEET THE BOARD OF COMMISSIONERS

Regular Commission Meetings are held on the first and third Tuesday of the month, at 9:30 a.m., in the SAWPA Board Room, 11615 Sterling Avenue, Riverside, CA 92503.

- ◆ [2018 COMMISSION BOARD MEETINGS](#)
- ◆ [2017 COMMISSION BOARD MEETINGS](#)
- ◆ [2016 COMMISSION BOARD MEETINGS](#)



2018 COMMISSION BOARD MEETINGS

DATE	AGENDA	PACKET	PRESENTATIONS	HANDOUTS	MINUTES	MISC.
December 18, 2018						
December 4, 2018						
November 20, 2018						
November 6, 2018						
October 16, 2018						
October 2, 2018						
September 18, 2018						
September 4, 2018						
August 21, 2018						
August 7, 2018						
July 17, 2018						
July 3, 2018						
June 19, 2018						
June 5, 2018						
May 15, 2018						
May 1, 2018						
April 17, 2018						
April 3, 2018						
March 20, 2018						
March 6, 2018						
February 20, 2018						
February 6, 2018	Agenda	Packet	Presentations			
January 16, 2018	Agenda	Packet	Presentations			
January 2, 2018	Cancelled					

2017 COMMISSION BOARD MEETINGS





SANTA ANA WATERSHED PROJECT AUTHORITY

11615 Sterling Avenue, Riverside, CA 92503 Monday Through Every Other Friday 8 am to 5 pm

- ABOUT US
- INLAND EMPIRE BRINE LINE
- OWOW
- PLANNING
- GOVERNANCE
- CALENDAR
- MORE

SAWPA Tools

Home | SAWPA Tools



OnBase Document Server

SAWPA uses OnBase to manage our scanned document database. Contact our IT Department to receive login information.



SAWPA Email

The Microsoft Office365 allows SAWPA staff to access their Outlook Mailbox. (For SAWPA Staff only)



Dropbox

For Dropbox instructions please contact SAWPA staff.



SAWPA GIS Viewer



Web Meetings

Accompanied by a conference call number, contact the meeting facilitator to receive access information to the web meeting and conference call numbers.

Web Meeting Access: * Required Field

Access Code*

First Name





Find address or place

< Back

GIS Layer Details

- ▶ Base Layers
- ▶ Social Geography
- ▶ Open Space and Habitat
- ▶ OWOW Projects
- ▶ Water Management
- ▶ Political Geography
- ▶ GeoHydrology

BaseMaps

Watershed