



...A United Voice for the Santa Ana River Watershed

## OWOW Steering Committee Members

**Ronald W. Sullivan**, Convener | SAWPA Commissioner  
**Thomas P. Evans**, SAWPA Commissioner  
**Shawn Nelson**, Orange County Supervisor  
**Marion Ashley**, Riverside County Supervisor  
**Curt Hagman**, San Bernardino County Supervisor  
**Laura Roughton**, Councilmember, City of Jurupa Valley

**Jon Harrison**, Councilmember, City of Redlands  
**Jose Solorio**, Councilmember, City of Santa Ana  
**James Hessler**, Altman Plants  
**Garry W. Brown**, Orange County Coastkeeper  
**Linda Ackerman**, Regional Water Quality Control Board

### REGULAR MEETING OF THE OWOW STEERING COMMITTEE

**Thursday, January 25, 2018 – 11:00 a.m.**  
at SAWPA, 11615 Sterling Avenue, Riverside, CA 92503

### AGENDA

- 1. **WELCOME AND INTRODUCTIONS** Ron Sullivan
- 2. **PUBLIC COMMENTS** Ron Sullivan  
Members of the public may address the Committee on items within the jurisdiction of the Committee; however, no action may be taken on an item not appearing on the agenda unless the action is otherwise authorized by Government Code §54954.2(b).
- 3. **APPROVAL OF MEETING MINUTES: November 16, 2017**
- 4. **BUSINESS ITEMS**
  - A. **Projects of the OWOW Plan Update 2018 (SC#2018.1)** Mike Antos  
**Recommendation:** Receive and file presentation and provide guidance to SAWPA staff about the effort to include projects in the OWOW Plan Update 2018.
- 5. **INFORMATIONAL ITEMS**
  - A. **Finalization of Watershed Signage with Bri Communications (SC#2018.2)** Ian Achimore  
**Recommendation:** Receive and file.
  - B. **OWOW Proposition 84 2015 Round Projects Update (SC#2018.3)** Ian Achimore  
**Recommendation:** Receive and file.
  - C. **OWOW Plan Update 2018 Status (SC#2018.4)** Mike Antos  
**Recommendation:** Receive and file.
  - D. **Disadvantaged Community Involvement Program Status (SC#2018.5)** Mike Antos  
**Recommendation:** Receive and file.



...A United Voice for the Santa Ana River Watershed

E. Proposition 1 IRWM Round 1 Status and Sacramento Trip (SC#2018.6)

Mark Norton

**Recommendation:** Receive and file.

6. DATE/TIME FOR FUTURE MEETINGS

Ron Sullivan

7. ADJOURNMENT

**PLEASE NOTE:**

Americans with Disabilities Act: Meeting rooms are wheelchair accessible. If you require any special disability related accommodations to participate in this meeting, please contact (951) 354-4220 or [kberry@sawpa.org](mailto:kberry@sawpa.org). Notification at least 48 hours prior to the meeting will enable staff to make reasonable arrangements to ensure accessibility for this meeting. Requests should specify the nature of the disability and the type of accommodation requested.

Materials related to an item on this agenda submitted to the Commission after distribution of the agenda packet are available for public inspection during normal business hours at the SAWPA office, 11615 Sterling Avenue, Riverside, and available at [www.sawpa.org](http://www.sawpa.org), subject to staff's ability to post documents prior to the meeting.

**Declaration of Posting**

I, Kelly Berry, Clerk of the Board of the Santa Ana Watershed Project Authority declare that on Thursday, January 18, 2018, a copy of this agenda has been uploaded to the SAWPA website at [www.sawpa.org](http://www.sawpa.org) and posted in SAWPA's office at 11615 Sterling Avenue, Riverside, California.

/s/

\_\_\_\_\_  
Kelly Berry, CMC

<b><u>2018 – OWOW Steering Committee Meetings</u></b>	
Fourth Thursday of Every Other Month (NOTE: All meetings begin at <b>11:00 a.m.</b> , unless otherwise noted, and are held at SAWPA.)	
January 25, 2018	March 22, 2018
May 24, 2018	July 26, 2018
September 27, 2018	November 15, 2018*
* Meeting date adjusted due to conflicting holiday.	



...A United Voice for the Santa Ana River Watershed

**OWOW STEERING COMMITTEE  
REGULAR MEETING MINUTES  
NOVEMBER 16, 2017**

<b>Committee Members</b>	
<b><u>Santa Ana Watershed Project Authority Representatives</u></b>	
Ronald W. Sullivan, Eastern Municipal Water District	Absent
Thomas P. Evans, Convener, Western Municipal Water District	Present
<b><u>County Supervisor Representatives</u></b>	
Marion Ashley, Riverside County Board of Supervisors (12:10 p.m.)	Present
Shawn Nelson, Orange County Board of Supervisors	Absent
Curt Hagman, San Bernardino County Board of Supervisors	Present
<b><u>County Mayor Representatives</u></b>	
Jon Harrison, Councilmember, City of Redlands	Present
Laura Roughton, Councilmember, City of Jurupa Valley	Present
Jose Solorio, Councilmember, City of Santa Ana	Present
<b><u>Business Committee Representative</u></b>	
James Hessler, Director of West Coast Operations, Altman Plants	Present
<b><u>Environmental Committee Representative</u></b>	
Garry W. Brown, President, Orange County Coastkeeper	Present
<b><u>Regional Water Quality Control Board Representative</u></b>	
Linda Ackerman, Vice Chair, Santa Ana Regional Water Quality Control Board	Absent
<b>Others Present</b>	
<b><u>SAWPA COMMISSIONERS:</u></b>	Jasmin A. Hall, Inland Empire Utilities Agency Gil Navarro, Alternate, San Bernardino Valley Municipal Water District Bruce Whitaker, Alternate, Orange County Water District
<b><u>SAWPA STAFF:</u></b>	Karen Williams; Larry McKenney; Mark Norton; Mike Antos; Dean Unger; Kelly Berry; Sara Villa

The OWOW Steering Committee meeting was called to order at 11:01 a.m. by Thomas P. Evans, Convener, at the Santa Ana Watershed Project Authority, 11615 Sterling Ave., Riverside, California.

1. **WELCOME AND INTRODUCTIONS**
2. **PUBLIC COMMENTS**  
There were no public comments.
3. **APPROVAL OF MEETING MINUTES – September 28, 2017**



**MOVED**, approve the September 28, 2017 meeting minutes.

Result:	<b>Adopted (Unanimously)</b>
Motion/Second:	Brown/Hessler
Ayes:	Brown, Evans, Hagman, Harrison, Hessler, Roughton, Solorio
Nays:	None
Abstentions:	None
Absent:	Ackerman, Ashley, Nelson, Sullivan

#### **4. BUSINESS ITEMS**

##### **A. Carmel Brown, Chief of DWR Financial Assistance Branch (SC#2017.23)**

Mark Norton introduced and welcomed Carmel Brown, Chief of DWR Division of Integrated Regional Water Management Financial Assistance Branch. Her job duties include oversight of the State of California Department of Water Resources (DWR) Integrated Regional Water Management Program (IRWM), including implementation, planning and Disadvantaged Community Involvement Programs. Ms. Brown provided an oral update of her background in joining DWR's executive team four years ago, and introduced Teji Sandhu and Mehdi Mizani, who are currently managing the grants that SAWPA administers on behalf of OWOW.

Ms. Brown noted that the Governor's California Water Action Plan (established in 2014) includes the goal of building regional sustainability across all levels of government in California, and one of DWR's Strategic Plan goals is building capacity for regional sustainability in California. DWR's role is to provide the technical and financial assistance to help SAWPA do the work in becoming more sustainable. Ms. Brown praised SAWPA as one of the best grantees, with invoices being processed smoothly, work products turned in on time, and good diversity of types of projects regarding water quality, flood, and ecosystem restoration.

Ms. Brown noted that Proposition 1 specifically directed that a minimum of 10% of the \$510 M that was dedicated to IRWM had to go to the Disadvantaged Community Involvement Program, and another 10% must go to projects that benefit Disadvantaged Communities. The intent is to ensure more meaningful engagement and involvement of all the under-represented communities and a better understanding and identification of what the needs are within the community.

Ms. Brown also reported that, within the California Water Plan Update 2018, DWR is creating a regional water atlas, which will be a framework to post case studies and value stories and get general information. Also within the California Water Plan there are several pilot studies, one of which is with SAWPA to further develop sustainability indicators. Finally, Ms. Brown noted that the Proposal Solicitation Package for the next Proposition 1 IRWM round will be a little different. DWR plans to consult with each of the twelve funding areas in the state to develop an implementation strategy that considers when projects will be ready and what other resources grant applicants have, looking at a 5-10 year horizon.

Committee Member Solorio questioned the timeframe of the regional water atlas. Ms. Brown noted that they are currently doing beta testing, and the draft of the 2018 update will be out in February 2018. Committee Member Hagman asked about DWR's involvement/communication with the Army Corps of Engineers. Ms. Brown stated that she has not met with the Corps in the last four months, but has previously met regularly with the Colonels from various districts. Convener Evans thanked Ms. Brown for attending.

This item was for informational and discussion purposes; no action was taken on Agenda Item No. 4.A.



**B. One Water One Watershed Governance and Process (SC#2017.24)**

Larry McKenney provided a PowerPoint presentation on the OWOW Governance Policy, as requested by Convener Sullivan during an earlier Committee meeting, and reviewed information contained in the Committee Memorandum on pages 11-12 of the agenda packet.

This item was for informational and discussion purposes; no action was taken on Agenda Item No. 4.B.

Committee Member Ashley joined the meeting at 12:10 p.m., after the discussion of Agenda Item No. 4.B.

**C. Goals & Objectives Workshop, OWOW Plan Update 2018 (SC#2017.25)**

Mike Antos provided a PowerPoint presentation on the OWOW Plan Update 2018 Goals and Objectives. He reviewed the intent for this joint workshop with the Steering Committee and Pillar Chairs to achieve consensus and approval of the OWOW Plan Update 2018 Goals and Objectives Final Draft, so that the plan drafters can use them. Antos referenced the revised Goals and Objectives that were provided to the OWOW Steering Committee and members of the public, and noted that they had been revised to reflect a change of prioritization based on the advice of the pillar chairs.

Convener Evans noted that OCWD had been critical of the earlier goals and asked Greg Woodside (OCWD) to comment. Woodside noted that it is not so much a conflict as a matter of prioritization. The County of Orange has a very serious homeless problem and is being sued. Addressing homelessness generates a lot of uncertainty in terms of how it will be done and how the County will interface with it.

Larry McKenney noted that the statutory IRWM standards require plans to address Disadvantaged Communities, and the DCI Program grant that is currently being worked on and the next round of funding are focused on Disadvantaged Communities and addressing the water resources impacts. Committee Member Solorio suggested having a follow-up meeting with the Pillar Chairs and Member Agency General Managers to go over the final draft of the Goals and Objectives. Antos noted that the process to date has included a lot of interaction back and forth amongst the Pillar Chairs (five of them being General Managers of the SAWPA member agencies), and the whole list of Goals and Objectives will stay a draft until next fall when the OWOW Plan Update 2018 comes back for review.

Workshop discussion of the Goals and Objectives proceeded, resulting in the following:

- Under Goal: Engage with members of disadvantaged communities to diminish environmental injustices, change wording to *“Engage with members of disadvantaged communities and associated supporting organizations to diminish environmental injustices and their impacts on the watershed”*.
- Under Goal: Engage with members of disadvantaged communities and associated supporting organizations to diminish environmental injustices and their impacts on the watershed”, change objective wording from *“Support broad-based collaboratives alleviating homelessness”* to *“Support broad-based collaboratives alleviating homelessness and its impact on the watershed”*.
- Under Goal: Achieve water resources through innovation and optimization, change objective wording from *“Safely strengthen links between flood protection and water conservation”* to *“Safely strengthen links between flood protection, stormwater management and water conservation”*.
- Under Goal: Achieve water resources through innovation and optimization, add objective of *“Plan for OWOW implementation beyond state grants”*.



- Under Goal: Achieve water resources through innovation and optimization, change objective wording from “*Innovate to increase water-use efficiency and conservation*” to “*Innovate to increase water-use efficiency conservation and interregional transfers*”.
- Under Goal: Preserve and enhance recreational landscape, open space, habitat, and natural hydrologic function, change wording to “*Preserve and enhance recreational areas, open space, habitat, and natural hydrologic function*”.
- Under Goal: Preserve and enhance recreational landscape, open space, habitat, and natural hydrologic function, remove objective “*Include ecosystem function in new development planning and construction*”.
- Under Goals and Objectives Title: The One Water One Watershed Plan Update 2018 describes how collaborative watershed planning, water and land management, and project implementation supports improved sustainability, resilience, and economic prosperity throughout the Santa Ana River Watershed through 2040, replace “*economic prosperity*” with “*quality of life*”.

Committee Member Roughton noted that she felt more comfortable after today’s workshop and in releasing the updated Goals and Objectives to the Pillars.

**MOVED**, approve the OWOW Plan Update 2018 Goals and Objectives Final Draft and releasing to the Pillars.

Result:	<b>Adopted (Unanimously)</b>
Motion/Second:	Roughton/Hagman
Ayes:	Ashley, Brown, Evans, Hagman, Harrison, Hessler, Roughton, Solorio
Nays:	None
Abstentions:	None
Absent:	Ackerman, Nelson, Sullivan

## 5. **INFORMATIONAL ITEMS**

### A. **OWOW Plan Update 2018 Status Report (SC#2017.26)**

Due to time constraints, Agenda Item No. 5.A. was deferred to the January 25, 2018 regular meeting.

### B. **Homelessness and Water Symposium No. 2 Status Report**

Due to time constraints, Agenda Item No. 5.B. was deferred to the January 25, 2018 regular meeting.

## 6. **ADJOURNMENT**

The meeting came to a close at 12:54 p.m.

**APPROVED:** January 25, 2018

---

Ronald W. Sullivan, Convener

Attest:

---

Kelly Berry, CMC, Clerk of the Board

## **OWOW STEERING COMMITTEE MEMORANDUM NO. 2018.1**

**DATE:** January 25, 2018

**TO:** OWOW Steering Committee

**SUBJECT:** Projects for the OWOW Plan Update 2018

**PREPARED BY:** Mike Antos, Senior Watershed Manager

### **RECOMMENDATION**

It is recommended that the OWOW Steering Committee receive this presentation and provide initial guidance to SAWPA staff about the effort to include projects in the OWOW Plan Update 2018, and to prepare for the Prop 1 Implementation grants.

### **DISCUSSION**

Part of an Integrated Regional Water Management plan is a suite of projects that will, if implemented, help achieve the goals and objectives of the plan. In the context of the OWOW Plan Update 2018, the Pillar workgroups are responsible for making recommendations for management and policy strategies that will achieve the goals of the plan by 2040. Those recommendations will include program and project types that could be implemented, and policies that could be considered by governing and administrative leaders in the watershed. The pillar recommendations, however, are not specific project proposals for inclusion in the plan. To achieve that list, SAWPA staff, following the State guidelines for IRWM and the direction of the Steering Committee, will conduct a “call-for-projects” in the coming months.

There are three items the Steering Committee will be asked to review, contribute to, and ultimately approve. The first below is our main topic today, and the second and third will be part of future Steering Committee deliberations.

1. Issuance of a call-for-projects, where respondents’ projects will be included in the OWOW Plan Update 2018.
2. Development of a policy for how the list of projects can be continuously updated over time, and how that policy will interact with the need for organizations to approve the OWOW Plan Update 2018.
3. Based on input of the Pillar chairs, develop ranking criteria for projects that are in the OWOW Plan Update 2018 that wish to compete for Prop 1 IRWM implementation grants.

Project proponents have several distinct reasons to want their project in the OWOW Plan Update 2018. The one most commonly understood is that projects that will compete for IRWM implementation grants must be included in the IRWM Plan developed by the State-approved regional water management group.

Changes in California policy have created other reasons for projects to be in an IRWM plan. Foremost is the Stormwater Resources Management Planning Act (2014), that requires a

stormwater or dry-weather flow project seeking funding from ANY state agency granting bond dollars must be included in a stormwater resources management plan and an integrated regional water management plan. Some stormwater resources management plans have already been before this committee for inclusion in OWOW 2.0 Plan (one in Orange County, one in Chino Basin), and San Bernardino County is working on one.

Others have found success including projects in OWOW 2.0 Plan as they sought outside funding from Federal or foundational grant support. Having your project in the OWOW Plan can be a source of acclaim or a way to generate new partnerships or multi-benefit programs.

Soon, following direction of the OWOW Steering Committee, SAWPA will conduct a “call for projects” for inclusion in the OWOW Plan Update 2018. This will be an all-call for projects, and project proponents must describe the project and declare the benefits it will achieve, and how the project will help move the watershed towards its goals. It is expected that this call will not omit any project that has achieved an as-yet unidentified minimum amount of information in the database. In this way, all the proposed projects or project concepts will be visible to all stakeholders, and the OWOW Plan Update 2018 will reveal all the good ideas that will move the region forward.

Staff has worked with Orange County representatives to ensure that the current call-for-projects they are conducting for the subregional OC Plan projects database will be able to export to the OWOW project database. Other plans, like the aforementioned stormwater resources plans, and other sub-regional integrated water management plans, have project lists that we hope to import into the OWOW project database.

Once more information is released from DWR about the Prop 1 implementation grants, the Pillars, with SAWPA staff input, will develop prioritization criteria, allowing competitive scoring of projects competing for grant funding. These criteria would then be brought to the OWOW Steering Committee for input and consideration. The competitiveness is a requirement of the Prop 1 funding, and the OWOW governance bodies must determine the right priorities for this next round of funding, and how do select projects for an expenditure proposal to DWR.

Today is an opportunity for the Steering Committee to ask clarifying questions about this process, and provide input to SAWPA staff as the call-for-projects is constructed, and the list of items necessary for project proponents to include in the project database is selected.

At the next Steering Committee meeting SAWPA staff will bring a draft of the call for projects and the projects database attributes (what people must include) for the Committee to approve.

At future meetings, and following the release of more detail from DWR about the implementation rounds, proposed prioritization criteria will be built by the Pillars with input by SAWPA staff and then considered for approval by the Committee and SAWPA Commission.



## **OWOW STEERING COMMITTEE MEMORANDUM NO. 2018.2**

**DATE:** January 25, 2018

**TO:** OWOW Steering Committee

**SUBJECT:** Finalization of Watershed Signage with Bri Communications

**PREPARED BY:** Ian Achimore, Senior Watershed Manager

### **RECOMMENDATION**

That the OWOW Steering Committee receive and file this update.

### **DISCUSSION**

With funding provided by SAWPA, Bri Communications completed the design and installation of 64 educational signs throughout the Santa Ana River Watershed. The signs can be viewed at locations such as the Santa Ana River Trail, the Chino Creek Wetlands and Educational Park, Huntington Beach State Park, Forest Falls and the Lake Perris Marina. Per the SAWPA Commission's approval of \$11,200 for this signage project, SAWPA's logo and a summary of the One Water One Watershed program is on each sign. The \$11,200 in funding will ensure that the signs remain up for a total of four years. The SAWPA logo has a URL link to the One Water One Watershed SAWPA webpage.

SAWPA is engaged in these signage efforts due to its participation in the Santa Ana River Trail Technical Advisory Committee through Commissioner Phil Anthony's membership on the Trail Policy Advisory Group, as well as through implementation of the One Water One Watershed 2.0 Goal: Accomplish effective, equitable and collaborative integrated watershed management.

The other funding sponsors include the Inland Empire Utilities Agency, San Bernardino Valley Water Conservation District, Chino Basin Water Conservation District and Jurupa Community Services District. SAWPA is working with the Inland Empire Utilities Agency to issue a press release announcing the installation of the signs.

### **BACKGROUND**

Bri Communications approached SAWPA in March 2017 on this signage project that would be funded by approximately ten other sponsors. Bri Communications, based in Seattle Washington, has experience in similar signage projects in the Sacramento River Watershed and the Seattle area surrounding the Puget Sound. The sign design, attached to this memorandum, includes a map of the watershed, major cities, county boundaries, water resources such as tributaries, rivers and lakes, and major freeways.

In order to secure a map message and a three inch by three inch logo at the bottom of the map for SAWPA, Bri Communications requires a subscription-based fee of \$5,600 every two years. The subscription fee allows Bri Communications to design the sign, work with approximately nine other

sponsors, identify sign locations, secure agreements for placement of the signs across the watershed, and then physically construct and place the sign structure. Each sign has the same content, except for the “You Are Here” locator on the map. With the SAWPA Commission’s approval of the \$11,200 amount for the Bri Communications contract, it allows SAWPA to keep the signage up for a total of four years (\$5,600/two year period x 2) with the SAWPA logo and a description of One Water One Watershed on the sign.

The summary of One Water One Watershed on the sign is as follows:

*The Santa Ana River Watershed is home to the concept and plan called “One Water One Watershed” or OWOW. OWOW reflects a comprehensive view of the watershed and water resources. It is an integral view encompassing all agencies and organizations in the watershed that looks at all types of water (local surface and groundwater, imported, storm water, wastewater) as components of a single water resource, inextricably linked to land use and habitat, and a part of the watershed’s natural hydrology. By this view, new water solutions can be developed that are integrated, multi-beneficial and collaborative.*

Attachments:

1. Final Sign Design
2. List of Locations of Installed Signage
3. Sample Photos of Installed Signage
4. Draft Press Release

# Final Design

**SANTA ANA RIVER WATERSHED**

**What is a Watershed?**  
A watershed is an area of land on which rain and snow fall and ultimately collect and drains into a single larger body of water, such as a river, lake, or ocean.

**Sustainable Landscaping**  
The decisions we make in our gardens can contribute to the health of our watershed. Anyone with access to a bit of land can help protect our watersheds and sustain our water supply.

**Groundwater Recharge**  
The Santa Ana River and its tributaries provide winter stream flows which are diverted to perennation basins to recharge the groundwater and aquifers throughout the watershed. This water stored underground, serves as a major source of drinking water and other urban needs. These critical recharge facilities have improved water flows and water quality for more than 100 years. Recharged water, piped in from outside the watershed, is also used to recharge our local aquifers.

**Explore The Watershed**

- San Valley Water District**  
San Gabriel Valley Water District  
100 100 - 100 100 100 100
- Water Conservation**  
Water Conservation  
Water Conservation
- San Gabriel and the Santa Ana River**  
San Gabriel and the Santa Ana River
- Land Use Planning**  
Land Use Planning
- Water Conservation**  
Water Conservation
- Water Conservation**  
Water Conservation
- Water Conservation**  
Water Conservation

**One Water One Watershed**  
The Santa Ana River Watershed is home to the San Gabriel and San Jacinto Mountains National Recreation Area (SJM NRA). OROW reflects a comprehensive view of the watershed and water resources. It is an integral view incorporating all agencies and organizations in the watershed that look at all types of water: local surface and groundwater, imported, storm water, recycled or conserved, treated, and treated wastewater. It is a part of the watershed's natural heritage. By this view, new water solutions can be developed that are integrated, multi-benefit and collaborative.

**Leaking Pumpout Stations**  
Deteriorated treated sewage outboard not only pollutes our waterways, but also the same one applies for using California waters at a dock. Make the right choice. Stop by the bathroom before heading out. Always empty sewage at an approved pumpout station. It's a good environmental return: help to view the water you love.

**Santa Ana River Watershed**  
The Santa Ana River Watershed is a 2,620 square mile area and includes portions of Orange, Riverside, San Bernardino, and San Diego counties. It is home to more than 10 million people. The Santa Ana River flows more than 100 miles and drains the largest coastal stream system in Southern California. The watershed contains several unique features, including Lake Mathews, Lake Perris, and Big Bear Lake. Other flood control facilities along the river include the Seven Oaks Dam. The watershed is highly urbanized, though some agricultural and undeveloped areas remain today.

**Water Conservation**  
Water conservation is critical to the Santa Ana River. Water that the river is used and stored throughout the watershed to supply our ever-growing population. With limited local surface water resources, we must work together to promote responsibility and efficient water use. Help ensure the availability of water for our children by conserving your water footprint and finding new ways to use water more efficiently.

**Six Easy Ways To Help**

1. **Conserve water**  
Turn off your water tap when you brush your teeth. Fix any leaks. Use a bucket to wash your car.
2. **Use yard care products sparingly**  
Use fertilizers and pesticides sparingly. Use the water wisely. Use a hose to water your plants. Use a bucket to wash your car.
3. **Use water wisely**  
Take shorter showers. Use a bucket to wash your car. Use a bucket to wash your car.
4. **Install water-saving devices**  
Install low-flow showerheads and toilets. Use a bucket to wash your car.
5. **Recycle**  
Recycle your paper, plastic, and glass. Use a bucket to wash your car.
6. **Plant native plants**  
Plant native plants in your yard. Use a bucket to wash your car.

**SAWPA logo with sawpa.org/owow URL**

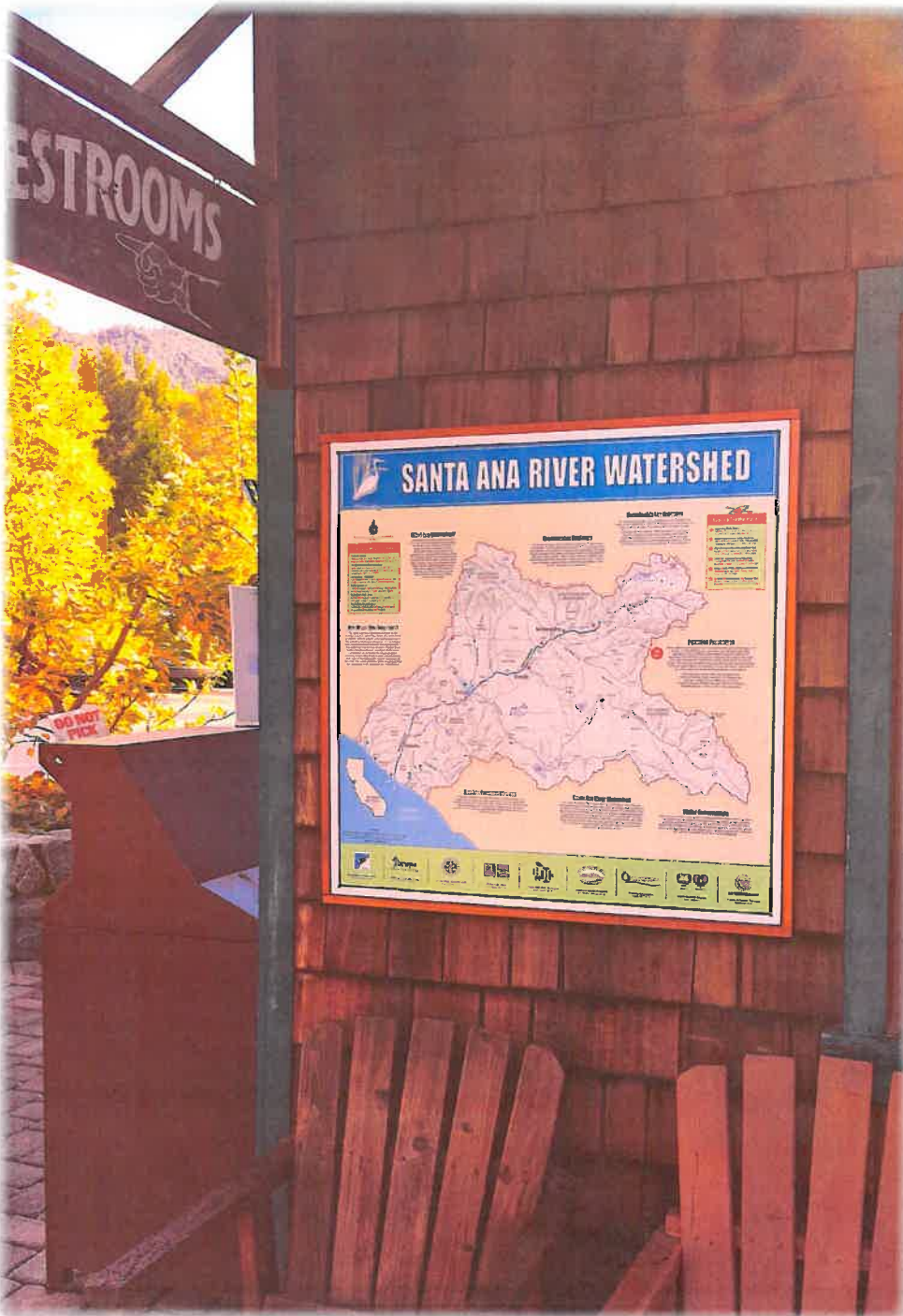
Section about One Water One Watershed program.

SAWPA logo with sawpa.org/owow URL

Page Intentionally Blank

In over 50 prime locations

## Project Summary of Santa Ana River Watershed Displays



**Thank you for being a sponsor**

**Bri Communications**

Paul Sherwin • 206-378-1055 • paul@bricomm.com

### **INSTALLED LOCATIONS**

#### **Riverside County**

Rancho Jurupa Park (Riverside County)  
Hidden Valley Park Overlooks (2) (Riverside County)  
Carlson Dog Park (City of Riverside)  
Fairmount Park (City of Riverside)  
Idyllwild Library  
Lake Hemet Picnic Area (USFS)  
Fuller Mill Creek Picnic Area (USFS)  
Lake Perris Marina  
Riverside-Corona RCD Land Use Learning Center  
La Paloma Wash Trail (City of Menifee)  
Cottonwood Golf Ctr. (City of Moreno Valley)  
San Jacinto Wildlife Area (CAFW)  
Noble Creek Park (Beaumont)  
Jurupa Mountain Discovery Center  
Canyon Lake POA  
Glen Ivy Hot Springs (Corona)  
Corona Library  
Sycamore Creek Interpretive Center (Temescal Valley)  
Norco Horsemen's Association/Corydon Staging Area  
Santa Ana River Trail (2) (Eastvale)  
Santa Ana River Trail (City of Norco)

#### **Orange County**

Centennial Park (Santa Ana)  
Civic Center (Santa Ana)  
Santiago Creek Nature Center (Santa Ana)  
Santa Ana River Trail at Moon Park (Costa Mesa)  
Fairview Park Santa Ana River Overlook (Costa Mesa)  
Shipley Nature Center (Huntington Beach)  
Bolsa Chica State Beach Interpretive Center  
Life Guard HQ Building (Huntington Beach SP)  
Huntington Beach State Park  
Heritage Museum of Orange County (Santa Ana)  
Newport Dunes Marina (Newport Beach)  
Back Bay Science Center (Newport Beach)  
School of Sailing and Seamanship (Newport Beach)  
Roger's Gardens (Corona Del Mar)  
Irvine Ranch Outdoor Education Ctr. (BSA) (Orange)  
Bolsa Chica Conservancy  
Windows to Our Wetlands (Bolsa Chica Conservancy)  
Acacia Park (City of Fullerton)

#### **San Bernardino County**

Big Falls Picnic Area (USFS) (Forest Falls)  
Mill Creek Visitor Center (USFS) (Yucaipa)  
Mary Vagle Nature Center (City of Fontana)  
Hortencias at the Cliff Hanger (Crestline)  
Pali Mountain (Running Springs)  
Meadow Park (Big Bear)  
Big Bear Alpine Zoo  
Lytle Creek Ranger Station (USFS)  
Appelwhite Picnic Area (USFS) (Lytle Creek)  
Oaks Restaurant (Angelus Oaks)  
San Timoteo Nature Sanctuary (Redlands Conservancy)  
Redlands Gateway Ranch (Redlands Conservancy)  
Caltrans Rest Area (East Bound) I-10 (Yucaipa)  
Caltrans Whitewater Rest Area (West Bound) I-10  
East Valley Water District Demo Gardens (Highland)  
Riley's at Los Rios Ranchos (Oak Glen)  
El Dorado Ranch Park (City of Yucaipa)  
Chino Creek Wetlands and Educational Park  
Amy's Farm (Ontario)  
Madin Open Air Market (Ontario)  
Chino Basin Water Conservation District (Montclair)  
Crafton Hills Open Space Trailhead (Yucaipa)  
Santa Ana River Trail (City of Colton)

**Locations Guaranteed: 50**

**Locations Installed: 64**

**Advertising Period: 12/1/17-11/1/19**

Page Intentionally Blank



San Timoteo Nature Sanctuary



Norco, Santa Ana River





Canyon Lake



Riverside, Hidden Valley, Santa Ana River Overlook



Montclair, Chino Basin Water Conservation District



Rancho Jurupa Park, Riverside

# SANTA ANA RIVER WATERSHED



**Six Easy Ways To Help**

- Conserve water** - Take shorter showers, turn off the water when brushing your teeth, and use a water-saving showerhead.
- Reuse and recycle** - Recycle newspapers, magazines, and other dry waste.
- Use less lawn** - Use drought-tolerant plants, mulch, and water only when necessary.
- Check for leaks** - Inspect faucets, toilets, and water heaters for leaks.
- Take the easy way out** - Use water-saving devices like aerators and low-flow toilets.
- Check your tires** - Properly inflated tires reduce fuel consumption.

**One Water One Watershed**

The Santa Ana River Watershed is home to the diverse and vibrant "One Water One Watershed" coalition. CAPWA leads a comprehensive coalition of environmental and water-related organizations to protect our watersheds and ecosystems. CAPWA provides technical assistance and information to help communities and businesses conserve water and protect our watersheds. CAPWA is a coalition of environmental, business, and community organizations working together to protect our watersheds and ecosystems. CAPWA is a coalition of environmental, business, and community organizations working together to protect our watersheds and ecosystems.

**What is a Watershed?**

A watershed is an area of land on which all the water that falls on it and drains off to the same body of water, such as a river, lake, or ocean. Watersheds come in all sizes and are separated by ridges and hills that are called the drainage divide. These drainage basins contain all the water that falls on them, including rivers, lakes, creeks, streams, and wetlands as well as all the water that seeps underground. Watersheds help us understand how water flows and how we can manage it better. Watersheds help us understand how water flows and how we can manage it better. Watersheds help us understand how water flows and how we can manage it better.

**Groundwater Recharge**

The Santa Ana River and its tributaries provide surface waters which are stored by groundwater basins to recharge the groundwater and aquifers throughout the watershed. This natural storage system acts as a major source of drinking water and other critical needs. Groundwater basins have been over-pumped and water quality has declined. We can help recharge our local aquifers. We can help recharge our local aquifers. We can help recharge our local aquifers.

**Sustainable Landscaping**

The decisions we make in our gardens can contribute to the health of the watershed. Areas with access to air and water help protect our watershed and sustain our water supply.

- Follow garden to approach, field and fallow seasons.
- Prevent pollution by diverting, slowing, and filtering stormwater through mulch and appropriate planting.
- Use locally produced plants that need little irrigation, bloom beautifully and provide habitat for birds and pollinators.

**Explore The Watershed**

- San Gabriel Mountains
- San Bernardino Mountains
- San Jacinto Mountains
- San Luis Valley
- San Marcos Valley
- Santa Ana Mountains
- Santa Rosa Mountains
- Santa Ynez Mountains
- Temescal Mountains
- Warner Mountains



**Pollution Prevention**

Water pollution can harm the wildlife, plants, animals and people that live in the watershed. We can help prevent pollution by diverting, slowing, and filtering stormwater through mulch and appropriate planting. We can help prevent pollution by diverting, slowing, and filtering stormwater through mulch and appropriate planting.

- Take your trash to a commercial or neighborhood recycling center.
- Use less paint, oil, and other hazardous materials.
- Use a grease trap in your kitchen.
- Do not dump paint, oil, and other hazardous materials into the trash.
- Do not dump paint, oil, and other hazardous materials into the trash.
- Do not dump paint, oil, and other hazardous materials into the trash.

**Beating Pumpout Stations**

Over 100 pumpout stations are located throughout the watershed. These stations are designed to help you dispose of your boat waste properly. These stations are designed to help you dispose of your boat waste properly. These stations are designed to help you dispose of your boat waste properly.

**Santa Ana River Watershed**

The Santa Ana River Watershed drains a 2,600 square mile area and includes portions of Orange, Riverside, San Bernardino, and Los Angeles counties. The watershed is home to a diverse array of natural resources, including the largest coastal stream system in Southern California. The watershed features several major water facilities, including Lake Mathews, Lake Perris, and Big Bear Lake. Other notable features include the San Jacinto Mountains and the San Gabriel Mountains. The watershed is home to a diverse array of natural resources, including the largest coastal stream system in Southern California.

**Water Conservation**

Water conservation is critical to the Santa Ana River. Water from the river is used and reused throughout the watershed to supply the non-growing population. With limited liquid surface water resources, we must work together to conserve water responsibly and efficiently. We must work together to conserve water responsibly and efficiently. We must work together to conserve water responsibly and efficiently.

**NOTICE**

This map was prepared by the Santa Ana River Watershed Council. The map is for informational purposes only. The map is not intended to be used for legal purposes. The map is not intended to be used for legal purposes. The map is not intended to be used for legal purposes.

Santa Ana River Trail, Eastvale



Acacia Park, Fullerton



Huntington Beach State Park

Page Intentionally Blank





Ian Achimore  
SAWPA  
Senior Watershed Manager  
951.354.4233  
[iachimore@sawpa.org](mailto:iachimore@sawpa.org)

Kathy Besser  
IEUA  
Executive Manager of External Affairs and  
Policy Development/AGM  
909.993.1638  
[kbesser@ieua.org](mailto:kbesser@ieua.org)

**For Immediate Release:**

January 16, 2018

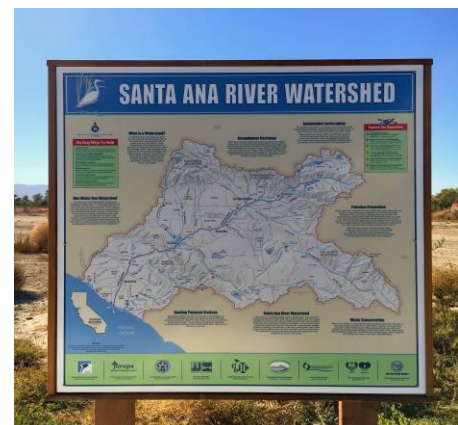
**Watershed Signage Project Brings Awareness to the Community**

Inland Empire, California – The Santa Ana Watershed Project Authority (SAWPA) and the Inland Empire Utilities Agency (IEUA) are pleased to announce the launch of a Santa Ana River Watershed educational signage project. In December 2017, 64 educational signs were erected throughout the Watershed, which includes northern Orange County and the Inland Empire.

The signs, designed and installed by Bri Communications, include a map of the watershed, and the location of major cities and water resources such as tributaries, rivers and lakes. They also include messages on important local water resource issues such as groundwater recharge, pollution prevention and the One Water One Watershed Program, a comprehensive watershed planning process that has been adopted by numerous agencies throughout the region.

Upon completion of the signage project, Richard E. Haller, General Manager of SAWPA, stated “Our Commission is very excited about supporting this effort which will show residents of this area where they get their drinking water, and where the water they use ends up. Our hope is this demonstrates that they don’t have to travel far to experience the open space and water resources we have here.”

“The watershed signage project helps increase community awareness to watershed issues. These signs help the community understand, identify and connect with the Santa Ana River Watershed and the



Sign along the Santa Ana River Trail

many resources it offers,” stated IEUA Board President Steve Elie. “We hope this signage project’s identification and connection will encourage the community to take action in protecting their water resources now and for our future.”

The signs can be viewed at locations such as the Santa Ana River Trail, the Chino Creek Wetlands and Educational Park, Huntington Beach State Park, Forest Falls and the Lake Perris Marina.

SAWPA and IEUA have supported this signage project to educate the approximately 6 million local residents on the watershed they call home and the water resources available to them. The Santa Ana River Watershed lies in semi-arid southern California, and like many other areas, SAWPA and IEUA are carefully evaluating water supplies and seeking creative, cost-effective strategies to provide reliable water resources for the residents of this watershed.

<p style="text-align: center;">About SAWPA:</p> <p>SAWPA was first formed in 1968 to address watershed issues and regulatory challenges. SAWPA has kept a strong record of partnerships with organization pursuing shared interests and overall watershed sustainability.</p>	<p style="text-align: center;">About IEUA</p> <p>The Inland Empire Utilities Agency covers 242-square miles, distributes imported water, provides industrial/municipal wastewater collection and treatment services, and other related utility services to more than 875,000 people through its member agencies which include Chino, Chino Hills, Cucamonga Valley Water District, Fontana, Fontana Water Company, Montclair, Monte Vista Water District, Ontario, and Upland.</p>
---	--

## OWOW STEERING COMMITTEE MEMORANDUM NO. 2018.3

**DATE:** January 25, 2018  
**TO:** OWOW Steering Committee  
**SUBJECT:** OWOW Proposition 84 2015 Round Projects Update  
**PREPARED BY:** Ian Achimore, Senior Watershed Manager

### RECOMMENDATION

That the OWOW Steering Committee receive and file this update.

### DISCUSSION

Two of the project proponents who have received funding from OWOW Proposition 84 2015 Round are requesting amendments be made to the SAWPA Grant Agreement that was executed by the Department of Water Resources in November 2016. The two projects and their project proponents include:

Project	Project Proponents
<b>2015 Integrated Watershed Protection Program</b>	Riverside County Flood Control and Water Conservation District (District)
<b>Santa Ana River Conservation and Conjunctive Use Program</b>	Eastern Municipal Water District Inland Empire Utilities Agency Orange County Water District San Bernardino Valley Municipal Water District Western Municipal Water District

#### 2015 Integrated Watershed Protection Program

The 2015 Integrated Watershed Protection Program includes three components focused on providing flood protection and water supply to western Riverside County:

1. San Jacinto River Levee, Stage 4, Phase 1: will install an approximately 2.5 mile long and approximately 10 to 12 feet high river levee in western Riverside County will provide all-weather access into and out of the San Jacinto Valley in western Riverside County and remove approximately 967 acres and approximately 445 structures from the San Jacinto River 100 year floodplain.
2. Bautista Optimization Pond: will expand upon the existing recharge facilities, which include a series of 6 recharge ponds constructed adjacent to Bautista Channel, by constructing six new basins and their corresponding inlet and outlet facilities within an approximate 16-acre site with an approximate benefit of 1,200 acre feet per year.
3. Beaumont Master Drainage Plan (MDP) Line 16: will install an approximately 6,800 foot reinforced concrete water conveyance pipeline that will connect recharge ponds owned and operated by the Beaumont-Cherry Valley Water District to areas that collect stormwater from a tributary area of approximately 500 acres.

Due to funding limitations from the cost sharing partner, the City of San Jacinto, for the San Jacinto River, Stage 4, Phase 1 component, the District is seeking to replace the levee component with the following flood control channel component in western Riverside County:

Sunnymead MDP Line B (also known as Heacock Channel), Stages 3 and 4: will improve an existing earthen channel to an ultimate 100-year concrete facility. As a result of contaminated groundwater, the project design eliminated the sub drain system and weep holes to prevent potential exposure of contaminated ground water to surface water. Once this project is constructed, it will provide flood protection for healthcare facilities, federal properties, and approximately 127 residences and businesses in the City of Moreno Valley. Furthermore, the constructed project will remove an approximately 28 acres of known FEMA floodplain Zone A and approximately 200 acres of FEMA floodplain Zone D. Zone D is defined as possible but undetermined flood hazard, however, the District had done a preliminary floodplain study which identified such flood hazard within Zone D.

March Joint Powers Authority (MJP) was the project manager for design, as well as for securing the necessary right of way and environmental permits for Heacock Channel. Funding for the design was provided by MJP, City of Moreno Valley and the District. Funding for Construction was approved on October 23, 2015, by the Air Force Reserve Command (AFRC) and the District. AFRC agreed to contribute \$7,600,000 and the District would fund the remaining portion of the project.

On July 12, 2017, the Heacock Channel component was awarded to Sukut Construction, LLC in the amount of \$13,591,604. The benefit of replacing San Jacinto River Levee, Stage 4, Phase 1 component with Heacock Channel is that construction of the channel's right of ways have been secured, environmental permits have been acquired, and construction is already underway and can be completed within the existing timeline of the grant. In comparison, the City of San Jacinto's cost share for the levee component, which as of November 2017 is estimated to be between \$2,300,000 and \$7,600,000 for 117 acres of land, and is estimated to take many years to acquire far exceeding the grant contract completion schedules.

Funding Table:

Component	Grant Amount	Total Cost
<del>San Jacinto River Levee, Stage 4, Phase 1</del>	<del>\$3,660,000</del>	<del>\$22,564,000</del>
Bautista Optimization Pond	\$174,302	\$3,082,000
Beaumont MDP Line 16	\$1,220,000	\$4,848,000
Sunnymead MDP Line B, Stages 3 and 4 (Heacock Channel)	\$3,660,000	\$17,600,000
<b>Total Before Heacock Channel Replacement</b>	<b>\$5,054,302</b>	<b>\$30,494,000</b>
<b>Total With Heacock Channel Replacement</b>	<b>\$5,054,302</b>	<b>\$25,530,000</b>

Santa Ana River Conservation and Conjunctive Use Program (SARCCUP)

SARCCUP includes the three components focused on providing water supply and ecosystem restoration in the watershed:

1. Habitat Improvements: Will remove approximately 640 acres of the invasive weed *Arundo Donax* in the Santa Ana River Watershed and construct about 40.5 acres of riparian vegetation for the Santa Ana sucker in order to obtain permits for various water supply projects such as the Enhanced Recharge in Santa Ana River Basins.
2. SARCCUP Water Use Efficiency: Will expand the existing water use efficiency project that received grant funding during the OWOW Proposition 84 2014 Drought Round to provide support to approximately five (5) agencies for conservation-based water rate structures and implement the Smartscape Program with partner Orange County Coastkeeper.
3. Conjunctive Use: Create a diversified conjunctive use program that can be used to store 180,000 acre feet of wet-year water and then pump that water during droughts, providing dry year yield.

In December 2017, results from the project proponent’s conjunctive use decision support model found that same 180,000 acre feet of water benefit promised to the DWR in the Grant Agreement can still be realized by replacing certain facilities of the SARCCUP project (shown in Table 1) with other facilities (shown in Table 2). These changes will allow cost savings to SARCCUP while still maintaining the intended benefits in the Grant Agreement.

**Table 1**

Proposed Projects to be Removed	Total Cost
Baseline Feeder (BLF) Extension & Associated Chino Basin	\$29,302,340
Elsinore Basin Aquifer Storage & Recovery (ASR) Wells	\$6,140,000
San Bernardino Basin Area Project	\$24,255,000
<b>TOTAL</b>	<b>\$59,697,340</b>

**Table 2**

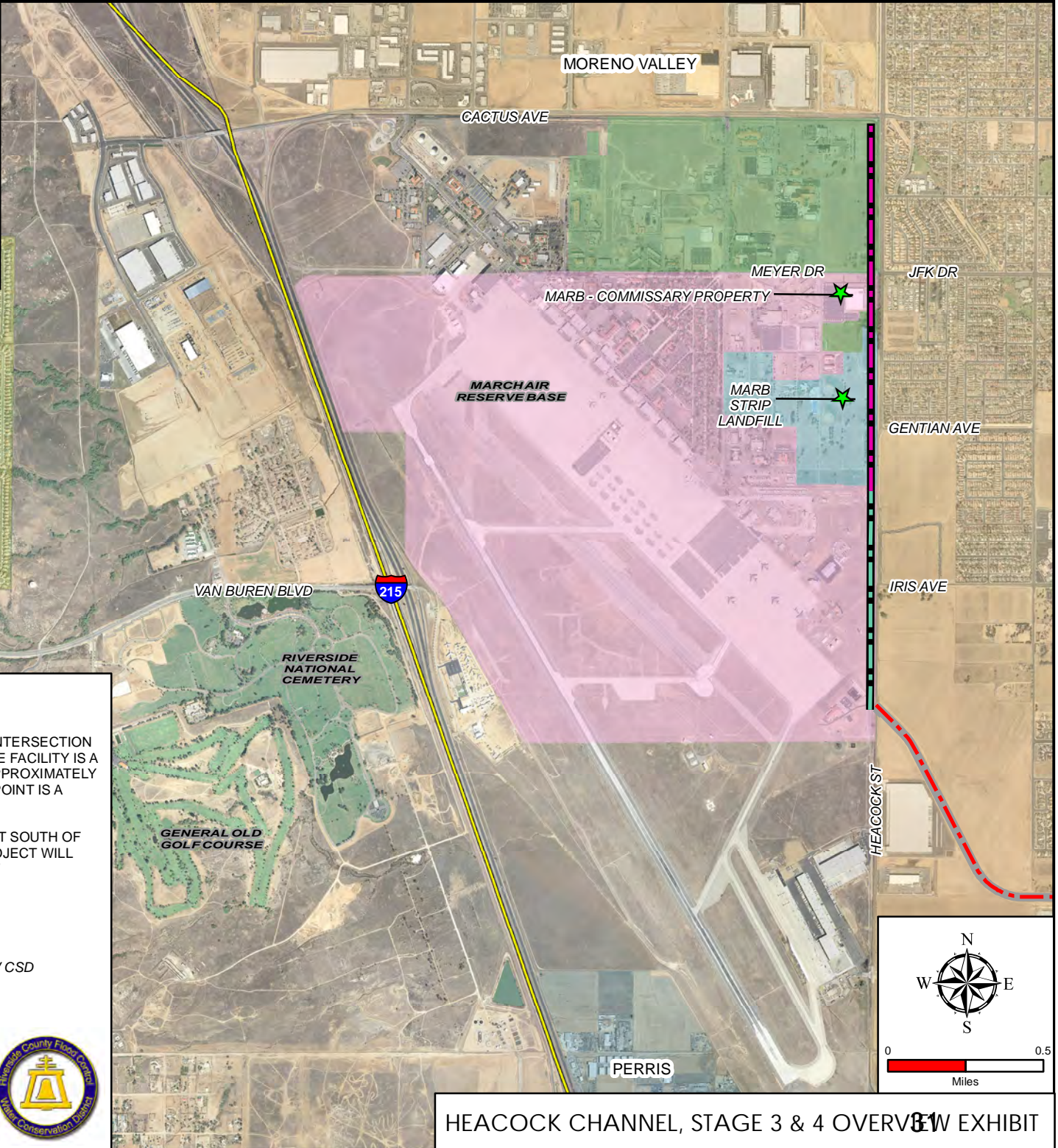
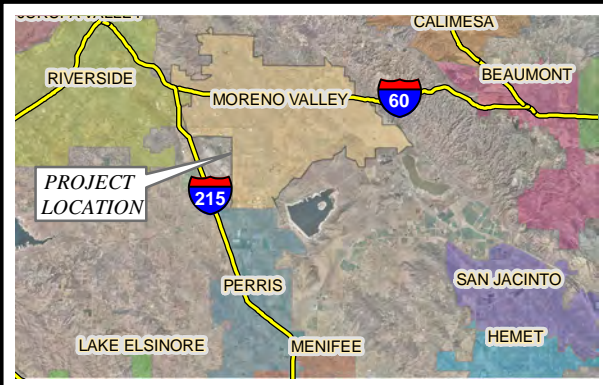
Proposed Projects to be Added	Total Cost
Chino Basin Project	\$15,000,000
Elsinore Basin Project	\$4,662,000
Riverside Basin Project	\$12,228,000
La Sierra Pipeline & Sterling Pump ssStation	\$10,800,000
<b>TOTAL</b>	<b>\$42,690,000</b>

Since the total amount of the new facilities is less than the total amount of the facilities in the Grant Agreement, the savings would be applied toward the local share for the SARCCUP Agencies. The amount of grant funding defined for this project, \$55 million, would still be fully used by the project proponents and the overall benefits would remain the same as promised to the State. Sufficient local match would still be provided by the SARCCUP project proponents to meet the minimum local match requirements by the State.


Attachments:


1. Sunnymead MDP Line B, Stage 3 and 4 Project Map
2. March Air Reserve Base Contaminated Groundwater Plume
3. SunnyMead MDP Line B, Stage 3 and 4 Cost Share Agreement
4. SARCCUP Presentation on Decision Support Modeling Results

x-Prop 84 2015 Round Update









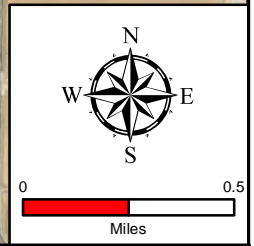
**PROJECT DESCRIPTION**

 HEACOCK CHANNEL STAGE 3 EXTENDS FROM THE INTERSECTION OF CACTUS AND HEACOCK TO SOUTH OF GENTIAN AVENUE. THE FACILITY IS A CONCRETE LINED TRAP CHANNEL FROM CACTUS AVENUE TO APPROXIMATELY 600-FT SOUTH OF JFK/MEYERS DRIVE. DOWNSTREAM OF THIS POINT IS A RECTANGULAR CHANNEL.

 HEACOCK CHANNEL STAGE 4 EXTENDS FROM 900-FT SOUTH OF GENTIAN AVE TO PERRIS VALLEY CHANNEL LATERAL A. THE PROJECT WILL BE CONSTRUCTED ON MARB PROPERTY AND A SMALL STRIP OF EXISTING HEACOCK STREET RIGHT OF WAY.

**LEGEND**

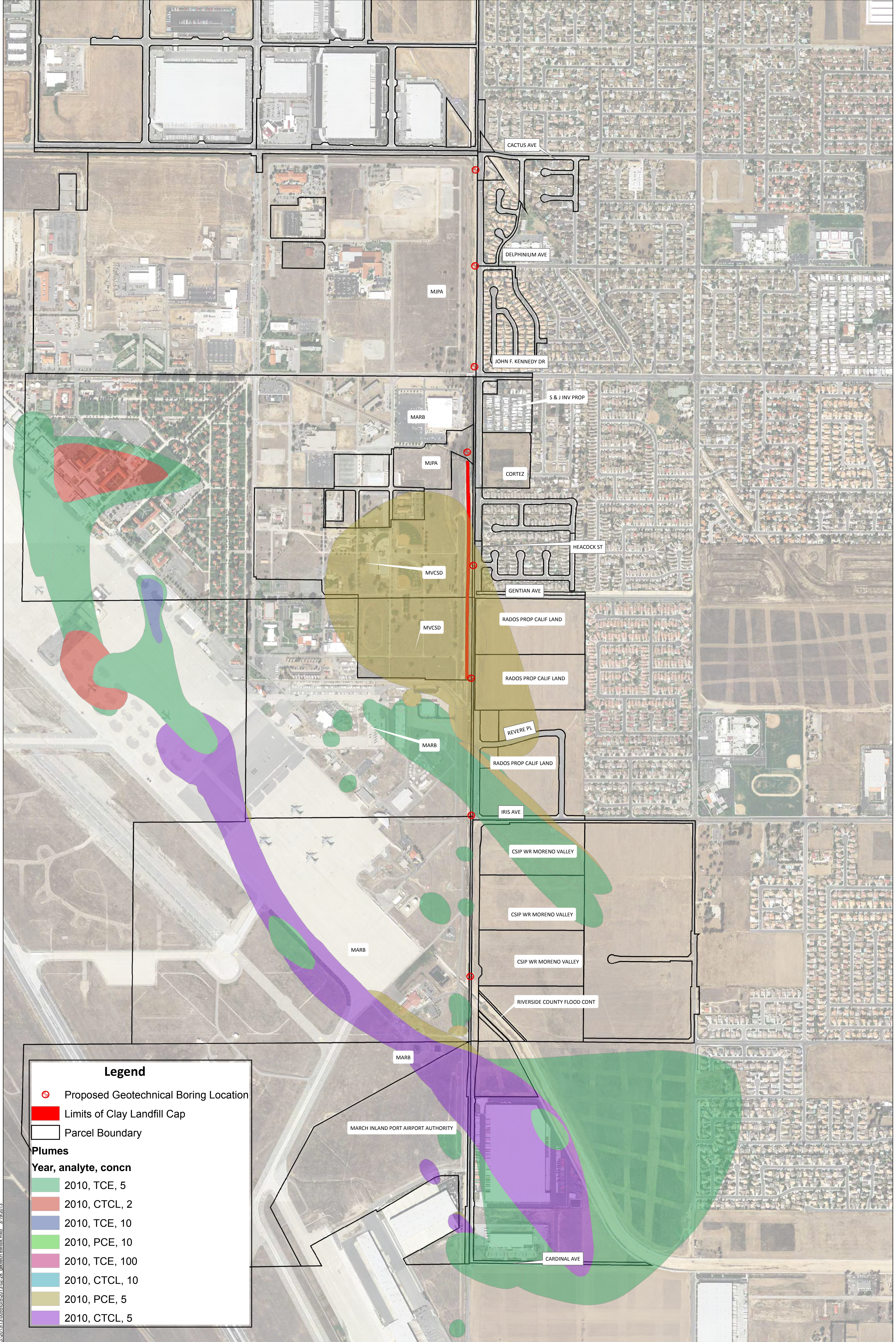
-  MORENO VALLEY COMMUNITY SERVICES DISTRICT - MV CSD
-  MARCH AIR RESERVE BASE (MARB)
-  MARCH JOINT POWERS AUTHORITY - MJPA
-  STAGE 3 - ALSO KNOWN AS PHASE I & II
-  STAGE 4 - ALSO KNOWN AS PHASE III
-  EXISTING PERRIS VALLEY CHANNEL, LATERAL A



HEACOCK CHANNEL, STAGE 3 & 4 OVERVIEW EXHIBIT

Page Intentionally Blank





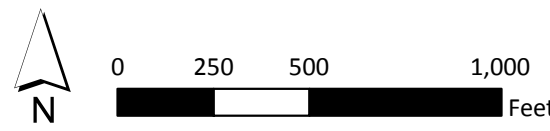
**Legend**

- Proposed Geotechnical Boring Location
- Limits of Clay Landfill Cap
- Parcel Boundary

**Plumes**

Year, analyte, concn
2010, TCE, 5
2010, CTCL, 2
2010, TCE, 10
2010, PCE, 10
2010, TCE, 100
2010, CTCL, 10
2010, PCE, 5
2010, CTCL, 5

G:\2013\13-0055\GIS\2013\_02\_28\_gesetch\_exhibit.mxd 3/19/2013



Page Intentionally Blank

1 MEMORANDUM OF AGREEMENT  
 2 BETWEEN  
 3 THE UNITED STATES OF AMERICA DEPARTMENT OF THE AIR FORCE  
 4 AND  
 5 RIVERSIDE COUNTY FLOOD CONTROL  
 6 AND WATER CONSERVATION DISTRICT

7 Made and entered into between March Air Reserve Base (MARB), an Air Force  
 8 Reserve Component (AFRC) installation, hereinafter referred to as "USAF", acting by and  
 9 through the Commander, 452<sup>nd</sup> Air Mobility Wing, and the Riverside County Flood Control and  
 10 Water Conservation District, hereinafter referred to as "DISTRICT", a public agency organized  
 11 and existing pursuant to Chapter 48 of the Appendix to the California Water Code, with its  
 12 principal place of business at 1995 Market Street, Riverside, CA 92501.

13 WITNESSETH:

14 WHEREAS, USAF and DISTRICT wish to work collaboratively to expedite the  
 15 completion of certain stormwater management facilities known as the Heacock Channel Phases  
 16 1, 2 and 3 (as shown on the final approved construction drawings) hereinafter collectively  
 17 referred to as "PROJECT" in order to provide necessary flood control and drainage protection to  
 18 the adjacent areas; and

19 WHEREAS, USAF owns a portion of adjoining property on and along the  
 20 PROJECT at the MARB, hereinafter referred to as "PHASE 3", and as illustrated on the attached  
 21 Exhibit A, and made a part hereof; and

22 WHEREAS, the March Joint Powers Authority, hereinafter referred to as "MIPA"  
 23 administered the design contract for PROJECT, including PHASE 3, pursuant to Section II.2 of  
 24 an existing Cooperative Agreement and subsequent MOA executed July 28, 2014, hereinafter  
 25 collectively referred to as "CO-OP" (attached hereto as Exhibit B and made a part hereof),  
 26 completing PROJECT design plans; and

27 WHEREAS, DISTRICT, MIPA and City of Moreno Valley are jointly funding  
 28 design and construction of Phases 1 and 2 of PROJECT; and

WHEREAS, DISTRICT will contract construction of all three Phases of  
 PROJECT. DISTRICT is requesting funding in the amount of approximately seven million six  
 hundred six thousand seven hundred dollars (\$7,606,700) from USAF to complete PHASE 3  
 construction.

NOW, THEREFORE, USAF accepts the responsibility to pay the construction  
 costs for PHASE 3, approximated at seven million six hundred six thousand seven hundred  
 dollars (\$7,606,700), but not to exceed nine million five hundred eight thousand three hundred  
 seventy-five dollars (\$9,508,375). Costs exceeding seven million six hundred six thousand seven  
 hundred dollars (\$7,606,700) shall require written approval by USAF.

**Please note:**  
 Phase 1 & 2 mentioned  
 in agreement= Stage 3  
 in project name  
 Phase 3 mentioned in  
 agreement= Stage 4 in  
 project name

- 1 1. BASIS OF DESIGN: Pursuant to CO-OP, MJPA will ensure that the design  
2 for PROJECT meets all requirements of the Federal, State or local  
3 regulatory agencies. Further, the design must comply with the specific  
4 requirements of DISTRICT and USAF and all plans must be submitted to  
5 District and USAF for review and approval.
- 6 2. CONSTRUCTION: DISTRICT shall construct PROJECT inclusive of  
7 PHASE 3 pursuant to applicable California Public Contract Code.  
8 DISTRICT shall keep an accurate accounting of all actual construction costs  
9 associated with each Phase and, upon completion, provide USAF with a  
10 final accounting of construction costs, including change orders for PHASE  
11 3.
- 12 3. MAINTENANCE: Upon completion of PROJECT, and DISTRICT  
13 acceptance thereof, DISTRICT shall be solely responsible for operation and  
14 maintenance of PROJECT.
- 15 4. REAL PROPERTY INTEREST: Where PROJECT is proposed on USAF  
16 property, USAF will provide DISTRICT (to DISTRICT'S satisfaction) all  
17 rights necessary to construct, and subsequently operate and maintain  
18 PROJECT in perpetuity. Said rights may be in the form of fee-simple,  
19 appropriate exclusive easement(s), or equivalent, or some other form  
20 sufficient for DISTRICT to construct, operate and maintain PROJECT.  
21 Final form and terms shall be mutually acceptable to both USAF and  
22 DISTRICT.
- 23 5. PAYMENTS: Certified invoices shall be forwarded to the Air Force for  
24 reimbursement at the following address: 452<sup>nd</sup> Base Civil Engineer, 610  
25 Meyer Drive, Bldg. 2403, March ARB, CA 92518-2166 and payments will  
26 be processed within 30 days of receipt.
  - 27 a. Invoice for (\$7,606,700) may be submitted by DISTRICT upon  
28 approval (evidenced via wet signatures by MARB and DISTRICT) of  
the construction drawings but not prior to October 1, 2016.
  - b. Following bid opening but subject to prior USAF approval,  
DISTRICT will invoice USAF for as-bid PHASE 3 costs exceeding  
\$7,606,700 but not to exceed \$9,508,375.
  - c. DISTRICT reserves the right, at DISTRICT'S sole discretion to reject  
any and all bids and not award contract for PROJECT, if such is  
deemed in the best interest of DISTRICT.
  - d. Upon completion of PROJECT and establishment of actual  
construction costs for PHASE 3, DISTRICT will submit final cost  
accounting to USAF.


1  
2  
3  
4  
5  
6  
7  
8  
9  
10  
11  
12  
13  
14  
15  
16  
17  
18  
19  
20  
21  
22  
23  
24  
25  
26  
27  
28

- i. Subject to prior approval of any costs in excess of \$7,606,7000 by USAF, DISTRICT will invoice USAF for balance of PHASE 3 construction cost subject to not to exceed \$9,508,375.
- ii. In the event final costs are less than USAF contribution, DISTRICT will return any unexpended funds within 90 days of filing of Notice of Completion.
- e. It is mutually understood that, unless this MOA is amended, all disbursed funds shall be returned to USAF if the construction contract for PROJECT, inclusive of PHASE 3, is not awarded prior to August 31, 2017.

6. AVAILABILITY OF FUNDS: Funds are not presently available for PROJECT. USAF'S obligation under this Agreement is contingent upon the availability of appropriated funds from which payment for PROJECT purposes can be made. No legal liability on the part of USAF for any payment may arise until funds are made available to the 452<sup>nd</sup> Air Mobility Wing for this contract and until DISTRICT receives notice of such availability, to be confirmed in writing by USAF.

IN WITNESS WHEREOF, the parties have executed this Agreement as of the date written below.


RIVERSIDE COUNTY FLOOD CONTROL  
AND WATER CONSERVATION DISTRICT

BY   
WARREN D. WILLIAMS  
General Manager-Chief Engineer

13 APR 2016

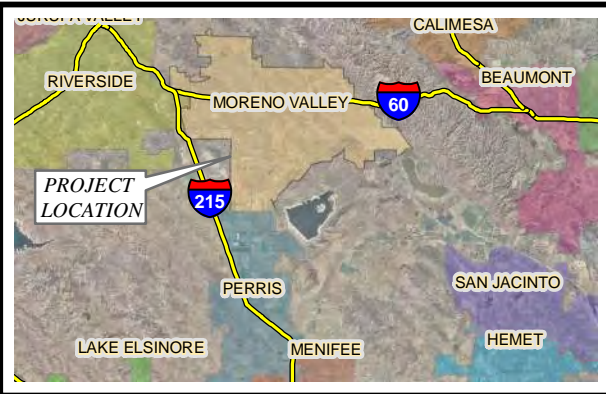
Date

UNITED STATES OF AMERICA


BY   
RUSSELL A. MUNCY, Brig Gen  
USAFR, 452<sup>nd</sup> Air Mobility Wing  
Commander

13 APR 2016

Date



**LEGEND**

 HEACOCK CHANNEL PHASE 3 EXTENDS FROM 900-FT SOUTH OF GENTIAN AVE TO PERRIS VALLEY CHANNEL LATERAL A. THE PROJECT WILL BE CONSTRUCTED ON MARB PROPERTY AND A SMALL STRIP OF EXISTING HEACOCK STREET RIGHT OF WAY.

NOTE: ALSO KNOWN AS STAGE 4

 EXISTING PERRIS VALLEY CHANNEL, LATERAL A



HEACOCK CHANNEL, PHASE 3  
EXHIBIT **A8**

Exhibit B –

**“CO-OP”**

**Tri-party (Moreno Valley/MJPA/DISTRICT)  
Cooperative Agreement for Design**

executed March 12, 2013

&

**2-Party (USAF/MJPA) supplemental design MOA**

executed July 28, 2014

COOPERATIVE AGREEMENT

Sunnymead MDP – Line B, Stage 3 (Heacock Channel)  
Project No. 4-0-00011

The RIVERSIDE COUNTY FLOOD CONTROL AND WATER CONSERVATION DISTRICT, hereinafter called "DISTRICT", the CITY OF MORENO VALLEY, hereinafter called "CITY", and the MARCH JOINT POWERS AUTHORITY, hereinafter called "MJPA", hereby agree as follows:

RECITALS

A. DISTRICT, CITY and MJPA wish to work collaboratively to expedite the completion of certain stormwater management facilities identified in DISTRICT'S Sunnymead Master Drainage Plan (MDP) as Line B, hereinafter called "HEACOCK CHANNEL-STAGE 3", in order to provide necessary flood control and drainage to the adjacent area; and

B. HEACOCK CHANNEL-STAGE 3 consists of the following channel segments: (i) from Cactus Avenue southerly to approximately 1,000 LF south of Meyer Drive, hereinafter called PHASE 1, (ii) from PHASE 1 southerly to March Air Reserve Base's (MARB) Z-Street Channel located approximately 1,000 LF south of Gentian Avenue, hereinafter called PHASE 2, and (iii) from Z-Street Channel southerly to Perris Valley Channel Lateral A, hereinafter called PHASE 3, as collectively shown in concept in red on Exhibit "A" attached hereto and made a part hereof. PHASE 1, PHASE 2 and PHASE 3 are hereinafter collectively called "DISTRICT DRAINAGE FACILITIES"; and

C. Associated with the construction of DISTRICT DRAINAGE FACILITIES is the construction of certain inlet structures, certain catch basins, connector pipes and any other associated improvements located within CITY held easements or rights of way, hereinafter called "CITY APPURTENANCES"; and

D. Associated with the construction of DISTRICT DRAINAGE FACILITIES



1 is the construction of certain inlet structures, certain catch basins, connector pipes and any other  
2 associated improvements located within MIPA held easements or rights of way, hereinafter  
3 called "MIPA APPURTENANCES"; and

4 E. Together DISTRICT DRAINAGE FACILITIES, CITY  
5 APPURTENANCES and MIPA APPURTENANCES are hereinafter called "PROJECT"; and

6 F. All parties recognize and acknowledge that the complete engineering  
7 design and subsequent construction of PHASE 3 will be deferred until such time that  
8 significant funding is secured from the March Air Reserve Base (MARB) and/or from alternate  
9 sources; and, therefore, CITY will limit its funding for engineering design, environmental  
10 review, and regulatory permitting efforts on PHASE 3 to a preliminary design level analysis  
11 and report, hereinafter called "PDR", consisting of properly defined design parameters such as  
12 i) the vertical and horizontal alignments, (ii) channel configuration, and (iii) hydraulics capacity  
13 necessary for PHASE 3 to ensure that PHASE 1 and PHASE 2 will be a fully functional flood  
14 control system upon construction completion; and  
15

16 G. With that said, CITY has budgeted one million two hundred fifty thousand  
17 dollars (\$1,250,000) to fund MIPA to (i) prepare all aspects of engineering design, including  
18 the preparation, processing, implementation and administration of all necessary environmental  
19 studies and documents, environmental regulatory permits, and any associated mitigation  
20 requirements for the construction, operation, and maintenance of PHASE 1 and PHASE 2, and  
21 (ii) prepare a PDR for PHASE 3 as set forth herein; and  
22

23 H. MIPA agrees to (i) administer a design contract, (ii) complete all necessary  
24 environmental studies and documents, (iii) secure all necessary environmental regulatory  
25 permits, (iv) implement all mitigation required as part of the environmental and regulatory  
26  
27  
28

1 permitting processes for the construction, operation, and maintenance of PHASE 1 and PHASE  
2 2 and (v) prepare a PDR for PHASE 3 as set forth herein; and

3 I. MJPA shall collect drainage fees, hereinafter called "DRAINAGE FEES",  
4 from those developments, including the master developer of March LifeCare Campus, that are  
5 located within the MJPA jurisdiction and whose storm runoff is tributary to HEACOCK  
6 CHANNEL-STAGE 3. MJPA agrees to forward to DISTRICT any DRAINAGE FEES  
7 collected for the purpose of constructing PHASE 1 and/or PHASE 2 under the terms and  
8 conditions of this Agreement.

9  
10 J. MJPA has also conditioned the master developer of March LifeCare  
11 Campus to fully fund and construct an ultimate bridge structure at Meyer Drive, hereinafter  
12 called "BRIDGE". MJPA agrees to accept ownership and responsibility for the operation and  
13 maintenance of BRIDGE upon completion of construction. In the event that MJPA chooses to  
14 allow master developer of March LifeCare Campus, in lieu of constructing BRIDGE, to deposit  
15 funding for BRIDGE construction in advance of DISTRICT DRAINAGE FACILITIES  
16 construction, MJPA agrees to transfer said funds to DISTRICT for the construction of BRIDGE  
17 as a part of DISTRICT'S construction for PHASE 1. DISTRICT is willing to incorporate  
18 BRIDGE into its PHASE 1 construction contract provided that MJPA pays DISTRICT for the  
19 cost of constructing BRIDGE as set forth herein; and

20  
21 K. CITY and MJPA agree to fund and secure, respectively, all temporary  
22 construction easements and permanent rights of way or easements necessary for the design,  
23 construction, operation, and maintenance of PHASE 1 and PHASE 2; and

24  
25 L. CITY and MJPA agree to fund and secure, respectively, all rights of way  
26 and easements as may be necessary for all mitigation required as part of the environmental and  
27 regulatory permitting processes to offset any potential adverse impacts associated with the  
28

1 design, construction, operation, and maintenance of PHASE 1 and PHASE 2; and

2 M. In the event that significant funding is secured from the MARB and/or  
3 alternate sources for the completion of engineering design and subsequent construction of  
4 PHASE 3, MJPA agrees to complete PHASE 3 by (i) administering a design contract, (ii)  
5 completing all necessary environmental studies and documents, (iii) securing all necessary  
6 environmental regulatory permits for the construction, operation and maintenance of PHASE 3,  
7 (iv) securing all necessary temporary construction easements and permanent rights of way or  
8 easements for construction, operation and maintenance of PHASE 3, (v) securing all rights of  
9 way and easements as may be necessary for all mitigation required for construction, operation  
10 and maintenance of PHASE 3, and (vi) implementing all mitigation required as part of the  
11 environmental and regulatory permitting processes for the construction, operation, and  
12 maintenance of PHASE 3; and  
13

14 N. DISTRICT agrees to construct DISTRICT DRAINAGE FACILITIES  
15 provided that (i) funding becomes available and is appropriately budgeted for and approved by  
16 DISTRICT'S Board of Supervisors, and (ii) CITY and MJPA comply with all applicable terms  
17 and conditions as set forth in this Agreement; and  
18

19 O. DISTRICT may choose to construct DISTRICT DRAINAGE  
20 FACILITIES either in segments or in its entirety depending upon the availability of funds; and  
21

22 P. CITY and MJPA agree to accept ownership and responsibility for the  
23 operation and maintenance of CITY APPURTENANCES and MJPA APPURTENANCES,  
24 respectively, upon completion of construction; and

25 Q. DISTRICT agrees to accept ownership and responsibility for the operation  
26 and maintenance of PHASE 1, PHASE 2 or PHASE 3 as applicable, upon completion of  
27 construction for that particular segment of DISTRICT DRAINAGE FACILITIES; and  
28

1 R. MJPA agrees to continue to negotiate with MARB regarding MARB'S  
2 financial participation in the design and construction of PHASE 3. In the event that MJPA is  
3 successful in their negotiations, MJPA agrees to forward to DISTRICT any funding received  
4 from MARB as a contribution for completion of PHASE 3 construction; and

5 S. DISTRICT, CITY and MJPA acknowledge it is in the best interest of the  
6 public to proceed with the construction of PROJECT at the earliest possible date.

7 NOW, THEREFORE, the parties hereto mutually agree as follows:

8 SECTION I

9 CITY shall:

10  
11 1. Pursuant to California Environmental Quality Act (CEQA), act as a  
12 Responsible Agency and, as such, will have the corresponding responsibility to fulfill the  
13 obligations of a CEQA Responsible Agency with respect to PROJECT.

14 2. Pay MJPA to prepare, or cause to be prepared, separate plans and  
15 specifications for PHASE 1 and PHASE 2, hereinafter called "PHASE 1 IMPROVEMENT  
16 PLANS" and "PHASE 2 IMPROVEMENT PLANS", respectively, in accordance with  
17 applicable CITY and DISTRICT standards and to submit to DISTRICT for review and  
18 approval.  
19

20 3. Pay MJPA to prepare, or cause to be prepared, PDR for PHASE 3.

21 4. Secure or cause to be secured, all necessary rights of way, easements,  
22 rights of entry and temporary construction easements as may be needed to construct, inspect,  
23 mitigate, operate and maintain PHASE 1 and PHASE 2 located within CITY'S jurisdictional  
24 boundaries.  
25

26 5. Pay MJPA to secure, or cause to be secured, all necessary permits,  
27 approvals, licenses or agreements required by any Federal, State, or local resource or regulatory  
28

1 agencies pertaining to the construction, operation and maintenance of PHASE 1 and PHASE 2.  
2 Such documents, hereinafter called "REGULATORY PERMITS", may include, but are not  
3 limited to, a Section 404 permit issued by U.S. Army Corps of Engineers, a Section 401 Water  
4 Quality Certification and/or Waste Discharge Requirements issued by the California Regional  
5 Water Quality Control Board (CRWQCB) and/or State Water Resources Control Board, a  
6 Streambed Alteration Agreement issued by the California Department of Fish and Wildlife.

7           6. Pay MJPA to implement, or cause to be implemented, all environmental  
8 mitigation required in association with the construction, operation and maintenance of PHASE  
9 1 and PHASE 2.

10           7. Pay MJPA to prepare, or cause to be prepared, all rights of way and  
11 easements documents deemed necessary by DISTRICT for the construction, operation and  
12 maintenance of PHASE 1 and PHASE 2.

13           8. Provide DISTRICT with copies of all REGULATORY PERMITS for the  
14 construction, operation and maintenance of PHASE 1 and PHASE 2, including any subsequent  
15 renewal or amendments thereto, for review and approval prior to final execution or acceptance  
16 by CITY or MJPA.

17           9. Provide DISTRICT, at the time of providing PHASE 1 and/or PHASE 2  
18 IMPROVEMENT PLANS as set forth in Section I.2., and prior to DISTRICT'S solicitation of  
19 bids for the construction of PHASE 1 and/or PHASE 2 pursuant to Section III.6., with duly  
20 executed easement(s) to the public for flood control and drainage purposes, including ingress  
21 and egress, or grant deed(s) of fee title where appropriate, for the rights of way deemed  
22 necessary by DISTRICT for the construction, inspection, operation and maintenance of PHASE  
23 1 and/or PHASE 2, as appropriate. The easement(s) or grant deed(s) shall be in a form  
24 approved by DISTRICT and shall be executed by all legal and equitable owners of the property  
25  
26  
27  
28

1 described in the easement(s) or grant deed(s).

2 10. At the time of recordation of the conveyance document(s) as set forth in  
3 Section I.9., furnish DISTRICT with policies of title insurance, each in the amount of not less  
4 than (i) fifty percent (50%) of the estimated fee value, as determined by DISTRICT, for each  
5 easement parcel to be conveyed to DISTRICT, or (ii) one hundred percent (100%) of the  
6 estimated fee value, as determined by DISTRICT, for each fee parcel to be conveyed to  
7 DISTRICT, guaranteeing DISTRICT'S interest in said property as being free and clear of all  
8 liens, encumbrances, assessments, easements, taxes and leases (recorded or unrecorded), except  
9 those which, in the sole discretion of DISTRICT, are deemed acceptable.  
10

11 11. Grant DISTRICT, by execution of this Agreement, the right to construct,  
12 inspect, operate and maintain PROJECT located within CITY owned rights of way or  
13 easements.

14 12. Order the relocation of all utilities installed by permit or franchise within  
15 CITY rights of way that are in conflict with PROJECT and which must be relocated at the  
16 utility company's expense.  
17

18 13. At its sole cost and expense, conduct periodic inspections of PHASE 1,  
19 PHASE 2 and/or BRIDGE construction, as applicable, for quality control purposes.

20 14. Upon completion of any segments of PROJECT construction and CITY'S  
21 receipt of DISTRICT'S Notice of Completion, assume ownership and sole responsibility for the  
22 operation and maintenance of CITY APPURTENANCES.  
23  
24  
25  
26  
27  
28

SECTION II

1 MJPA shall:

2  
3 1. Pursuant to CEQA, assume the sole Lead Agency role for preparation,  
4 circulation and adoption of all necessary and appropriate CEQA documents pertaining to the  
5 construction, operation and maintenance of PROJECT.

6 2. Prepare, or cause to be prepared, PHASE 1 IMPROVEMENT PLANS and  
7 PHASE 2 IMPROVEMENT PLANS as set forth in Section I.2., in accordance with applicable  
8 CITY and DISTRICT standards, and submit to CITY and DISTRICT for their review and  
9 approval. In the event that MJPA secured significant funding from the MARB and/or from  
10 alternate sources for the completion of engineering design and subsequent construction of  
11 PHASE 3, MJPA shall also prepare, or cause to be prepared, plans and specifications for  
12 PHASE 3, hereinafter called "PHASE 3 IMPROVEMENT PLANS", in accordance with  
13 applicable DISTRICT standards, and submit to DISTRICT for review and approval.

14  
15 3. Prepare, or cause to be prepared, PDR for PHASE 3.

16 4. Secure, or cause to be secured, all necessary rights of way, easements,  
17 rights of entry and temporary construction easements as may be needed to construct, inspect,  
18 mitigate, operate and maintain PROJECT located outside of CITY'S jurisdictional boundaries.

19  
20 5. Secure, or cause to be secured, all REGULATORY PERMITS necessary  
21 for the construction, operation and maintenance of PROJECT.

22 6. Ensure copies of all REGULATORY PERMITS, including any subsequent  
23 renewal or amendments thereto, are provided to DISTRICT for review and approval prior to its  
24 final execution or acceptance by CITY or MJPA.

25 7. Implement, or cause to be implemented, all environmental mitigation  
26 required in association with the construction, operation and maintenance of PROJECT.  
27  
28

1           8. Prepare, or cause to be prepared, all right of way documents deemed  
2 necessary by DISTRICT for the construction, and operation and maintenance of PROJECT.

3           9. Ensure DISTRICT is provided, at the time of providing IMPROVEMENT  
4 PLANS as set forth in Section II.2., and prior to DISTRICT'S soliciting of bids for the  
5 construction of PROJECT pursuant to Section III.6., with duly executed easement(s) to the  
6 public for flood control and drainage purposes, including ingress and egress, or grant deed(s) of  
7 fee title where appropriate, for the rights of way deemed necessary by DISTRICT for the  
8 construction, inspection, operation and maintenance of PROJECT. The easement(s) or grant  
9 deed(s) shall be in a form approved by DISTRICT and shall be executed by all legal and  
10 equitable owners of the property described in the easement(s) or grant deed(s).  
11

12           10. At the time of recordation of the conveyance document(s) as set forth in  
13 Section II.9., furnish DISTRICT with policies of title insurance, each in the amount of not less  
14 than (i) fifty percent (50%) of the estimated fee value, as determined by DISTRICT, for each  
15 easement parcel to be conveyed to DISTRICT, or (ii) one hundred percent (100%) of the  
16 estimated fee value, as determined by DISTRICT, for each fee parcel to be conveyed to  
17 DISTRICT, guaranteeing DISTRICT'S interest in said property as being free and clear of all  
18 liens, encumbrances, assessments, easements, taxes and leases (recorded or unrecorded), except  
19 those which, in the sole discretion of DISTRICT, are deemed acceptable.  
20

21           11. Grant DISTRICT, by execution of this Agreement, the right to construct,  
22 inspect, operate and maintain PROJECT within MIPA owned rights of way or easements.  
23

24           12. Order the relocation of all utilities installed by permit or franchise within  
25 MIPA rights of way that are in conflict with PROJECT and which must be relocated at the  
26 utility company's expense.

27           13. Within thirty (30) months of execution of this Agreement, endeavor to  
28



1 have (i) the design for PHASE 1 and PHASE 2 completed, (ii) the PDR for PHASE 3  
2 completed, (iii) all necessary environmental documents for PROJECT completed, (iv) all  
3 necessary environmental permits for PROJECT secured, (v) all environmental mitigation  
4 required in association with the construction, operation and maintenance of PHASE 1 and  
5 PHASE 2 implemented, and (vi) all necessary rights of way for PHASE 1 and PHASE 2  
6 secured.

7  
8 14. In the event that MJPA wishes to have DISTRICT construct BRIDGE as  
9 part of PHASE 1 construction;

- 10 (i) Submit a written request to DISTRICT (Attn: Design & Construction  
11 Division) regarding MJPA'S intent for DISTRICT to construct  
12 BRIDGE and provide all necessary documents for DISTRICT to  
13 construct BRIDGE as part of its PHASE 1 construction contract prior  
14 to DISTRICT advertising PHASE 1 for construction bids; and  
15  
16 (ii) Pay DISTRICT in the amount of 100% of bid price for BRIDGE  
17 construction, hereinafter called "INITIAL PAYMENT", upon receipt  
18 of DISTRICT invoice and bid documents; and  
19  
20 (iii) Pay DISTRICT for the difference between the final construction cost  
21 of BRIDGE and MJPA'S INITIAL PAYMENT as established in  
22 Section II.14.(ii) upon receipt of DISTRICT invoice as set forth in  
23 Section III.17; and  
24  
25 (iv) Accept sole responsibility for ownership, operation and maintenance  
26 of BRIDGE upon (a) receipt of DISTRICT'S Notice of Completion  
27 of PHASE 1, and (b) receipt of reproducible copy of record drawing  
28 plans for BRIDGE.



1 PROJECT pursuant to Sections I.7 and II.8.

2 5. Record, or cause to be recorded, the easement(s) or grant deed(s) provided  
3 by CITY and/or MJPA pursuant to Sections I.9 and II.9.

4 6. Provide CITY and MJPA with written notice that DISTRICT intends to  
5 advertise PROJECT or any phase thereof for construction within thirty (30) days.

6 7. Advertise, award and administer a public works construction contract(s)  
7 for PROJECT or any phase thereof at its sole discretion.

8 8. Provide CITY and MJPA with written notice that DISTRICT has awarded  
9 a construction contract for PROJECT or any phase thereof.

10 9. Construct, or cause to be constructed, PROJECT or any phase thereof  
11 pursuant to a DISTRICT administered public works construction contract, in accordance with  
12 PROJECT IMPROVEMENT PLANS approved by DISTRICT, CITY and MJPA.

13 10. Construct, or cause to be constructed, BRIDGE as part of PHASE 1  
14 provided MJPA'S written request as set forth in Section II.14 (i) allows adequate time for  
15 DISTRICT to incorporate BRIDGE plans and specifications into its PHASE 1 construction  
16 contract prior to DISTRICT advertising PHASE 1 for construction bids.

17 11. Invoice MJPA for INITIAL PAYMENT, at the time of providing written  
18 notice to MJPA of the award of a construction contract, as set forth in Section III.8, for one  
19 hundred percent (100%) of the construction bid price for BRIDGE in the event that DISTRICT  
20 agrees to construct BRIDGE as part of its PHASE 1 construction contract.

21 12. Prior to commencing construction, schedule and conduct a pre-  
22 construction meeting between DISTRICT, DISTRICT'S construction manager, DISTRICT'S  
23 construction contractor(s), CITY and MJPA. DISTRICT shall notify CITY and MJPA at least  
24 twenty (20) days prior to conducting the pre-construction meeting.  
25  
26  
27  
28

1 13. Within two (2) weeks of completing construction, provide CITY and/or  
2 MJPA with written notice that construction is substantially complete and request that CITY  
3 and/or MJPA, as appropriate, conduct a final inspection of PROJECT or any phase thereof and  
4 BRIDGE, if applicable.

5 14. Upon completion of construction but prior to CITY and MJPA'S  
6 acceptance of CITY APPURTENANCES and MJPA APPURTENANCES, respectively, for  
7 ownership and responsibility for operation and maintenance, provide CITY and MJPA with a  
8 copy of the Notice of Completion and a set of reproducible record drawings of CITY  
9 APPURTENANCES and MJPA APPURTENANCES, respectively.  
10

11 15. Upon completion of BRIDGE construction but prior to MJPA'S acceptance  
12 of BRIDGE for ownership and responsibility for operation and maintenance, provide MJPA  
13 with a copy of the Notice of Completion and a set of reproducible record drawings of BRIDGE.

14 16. Upon completion of construction of PROJECT or any phase thereof  
15 assume ownership and sole responsibility for the operation and maintenance of DISTRICT  
16 DRAINAGE FACILITIES or that particular phase thereof.

17 17. Invoice MJPA for remainder of BRIDGE construction cost, provided that  
18 the INITIAL PAYMENT is less than the final construction cost for BRIDGE. The invoice  
19 shall include a detailed breakdown of all costs, including but not limited to payment vouchers  
20 and other such documents as may be necessary, to establish the actual cost of construction.  
21

#### 22 SECTION IV

23 It is further mutually agreed:

24 1. Any MJPA'S financial contribution received by DISTRICT shall be used  
25 by DISTRICT solely for the purpose of constructing BRIDGE and/or PROJECT as set forth  
26 herein.  
27  
28

1           2. Except as otherwise provided herein, all construction work involved with  
2 PROJECT or any phase thereof shall be inspected by DISTRICT and shall not be deemed  
3 complete until approved and accepted as complete by DISTRICT.

4           3. CITY and MJPA personnel may observe and inspect all work being done  
5 on PROJECT, or any phase thereof, and BRIDGE, as applicable, but shall provide any  
6 comments to DISTRICT personnel who shall be solely responsible for all communications with  
7 its construction contractor(s).

8           4. In the event MJPA desires to include any additional work as part of  
9 BRIDGE construction contract, MJPA shall submit a written request to DISTRICT describing  
10 the additional work desired and agree to pay DISTRICT for any agreed upon work requested.  
11 Payment for any additional work shall be based upon actual quantities of materials installed at  
12 the contract unit prices bid, or at the negotiated change order prices.

13           5. DISTRICT will, at its sole discretion, elect to construct PROJECT in  
14 phase(s) as funding becomes available and is appropriately budgeted.

15           6. CITY shall indemnify, defend, save and hold harmless DISTRICT, County  
16 of Riverside and MJPA (including their respective officers, districts, special districts, and  
17 departments, their respective directors, officers, Board of Supervisors, elected and appointed  
18 officials, employees, agents, representatives, independent contractors, and subcontractors) from  
19 any liabilities, claim, damage, proceeding or action, present or future, based upon, arising out  
20 of or in any way relating to CITY (including its officers, employees, agents, representatives,  
21 independent contractors, and subcontractors) actual or alleged acts or omissions related to this  
22 Agreement, performance under this Agreement, or failure to comply with the requirements of  
23 this Agreement, including but not limited to: (a) property damage; (b) bodily injury or death;  
24 (c) payment of attorney's fees; and (d) any other element of any kind or nature whatsoever.  
25  
26  
27  
28

1           7. MIPA shall indemnify, defend, save and hold harmless DISTRICT,  
2 County of Riverside and CITY (including their respective officers, districts, special districts  
3 and departments, their respective directors, officers, Board of Supervisors, elected and  
4 appointed officials, employees, agents, representatives, independent contractors, and  
5 subcontractors) from any liabilities, claim, damage, proceeding or action, present or future,  
6 based upon, arising out of or in any way relating to MIPA (including its officers, employees,  
7 agents, representatives, independent contractors, and subcontractors) actual or alleged acts or  
8 omissions related to this Agreement, performance under this Agreement, or failure to comply  
9 with the requirements of this Agreement, including but not limited to: (a) property damage; (b)  
10 bodily injury or death; (c) payment of attorney's fees; and (d) any other element of any kind or  
11 nature whatsoever.  
12

13           8. DISTRICT shall indemnify, defend, save and hold harmless CITY and  
14 MIPA (including its officers, employees, agents, representatives, independent contractors and  
15 subcontractors) from any liabilities, claim, damage, proceeding or action, present or future,  
16 based upon, arising out of or in any way relating to DISTRICT (including its officers, Board of  
17 Supervisors, elected and appointed officials, employees, agents, representatives, independent  
18 contractors, and subcontractors) actual or alleged acts or omissions related to this Agreement,  
19 performance under this Agreement, or failure to comply with the requirements of this  
20 Agreement, including but not limited to: (a) property damage; (b) bodily injury or death; (c)  
21 payment of attorney's fees; and (d) any other element of any kind or nature whatsoever.  
22

23           9. Any notices sent or required to be sent to any party shall be mailed to the  
24 following addresses:  
25  
26  
27  
28

1 RIVERSIDE COUNTY FLOOD CONTROL  
2 AND WATER CONSERVATION DISTRICT  
3 1995 Market Street  
4 Riverside, CA 92501  
5 Attn: Assistant Chief Engineer  
6 Steve Thomas

CITY OF MORENO VALLEY  
Post Office Box 88005  
Moreno Valley, CA 92220  
Attn: Deputy Public Works Director/  
Assistant City Engineer  
Prem Kumar

5 MARCH JOINT POWERS AUTHORITY  
6 23555 Meyer Drive  
7 Riverside, CA 92518  
8 Attn: Executive Director  
9 Lori Stone

10 10. If any provision of this Agreement is held by a court of competent  
11 jurisdiction to be invalid, void or unenforceable, the remaining provisions will nevertheless  
12 continue in full force without being impaired or invalidated in any way.

13 11. This Agreement is to be construed in accordance with the laws of the State  
14 of California.

15 12. Any action at law or in equity brought by any of the parties hereto for the  
16 purpose of enforcing a right or rights provided for by the Agreement, shall be tried in a court of  
17 competent jurisdiction in the County of Riverside, State of California, and the parties hereto  
18 waive all provisions of law providing for a change of venue in such proceedings to any other  
19 county.

20 13. This Agreement is the result of negotiations between the parties hereto and  
21 with the advice and assistance of their respective counsel. No provision contained herein shall  
22 be construed against DISTRICT solely because, as a matter of convenience, it prepared this  
23 Agreement in final form.

24 14. Any waiver by DISTRICT, CITY or MJPA of any breach by the others of  
25 any one or more of the terms of this Agreement shall not be construed to be a waiver of any  
26 subsequent or other breach of the same or of any other term thereof. Failure on the part of  
27  
28

1 DISTRICT, CITY or MJPA to require from the other exact, full and complete compliance with  
2 any terms of this Agreement shall not be construed as in any manner changing the terms hereof,  
3 or estopping DISTRICT, CITY or MJPA from enforcement hereof.

4           15. This Agreement is intended by the parties hereto as their final expression  
5 with respect to the matters herein, and is a complete and exclusive statement of the terms and  
6 conditions thereof. This Agreement shall not be changed or modified except by the written  
7 consent of all parties hereto.

8           16. DISTRICT, CITY and MJPA each pledge to cooperate in regard to the  
9 operation and maintenance of their respective facilities as set forth herein and to discharge their  
10 respective maintenance responsibilities in an expeditious fashion so as to avoid the creation of  
11 any nuisance condition or undue maintenance impact upon the other's facilities.  
12

13 //

14 //

15  
16  
17  
18  
19  
20  
21  
22  
23  
24  
25  
26  
27  
28



IN WITNESS WHEREOF, the parties hereto have executed this Agreement

1  
2  
3  
4  
5  
6  
7  
8  
9  
10  
11  
12  
13  
14  
15  
16  
17  
18  
19  
20  
21  
22  
23  
24  
25  
26  
27  
28

on MAR 12 2013  
(to be filled in by Clerk of the Board)

RECOMMENDED FOR APPROVAL:

**RIVERSIDE COUNTY FLOOD CONTROL  
AND WATER CONSERVATION DISTRICT**

By *Steve Thomas*  
WARREN D. WILLIAMS  
General Manager-Chief Engineer

By *Marion Ashley*  
MARION ASHLEY, Chairman  
Riverside County Flood Control and Water  
Conservation District Board of Supervisors

APPROVED AS TO FORM:

ATTEST:

PAMELA J. WALLS  
County Counsel

KECIA HARPER-IHEM  
Clerk of the Board

By *Neal Kipnis*  
NEAL KIPNIS  
Deputy County Counsel


By *Kecia Harper-Ihem*  
Deputy

(SEAL)

Cooperant Agreement  
Sunnymead MDP - Line B, Stage 3 (Heacock Channel)  
02/04/13  
TT:blj

1 RECOMMENDED FOR APPROVAL:

**CITY OF MORENO VALLEY**  
A municipal corporation

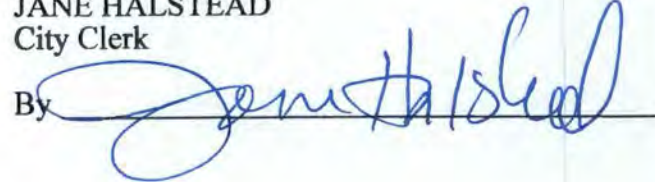
2  
3 By   
4 AHMAD R. ANSARI, P.E.  
Public Works Director/City Engineer

By   
HENRY GARCIA  
City Manager

7 APPROVED AS TO FORM:

ATTEST:

8  
9  
10 By  for  
SUZANNE BRYANT  
Acting City Attorney

JANE HALSTEAD  
City Clerk  
By 

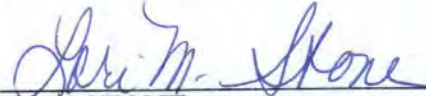
(SEAL)


24  
25 Cooperative Agreement  
Sunnymead MDP - Line B, Stage 3 (Heacock Channel)  
26 02/04/13  
27 TT:blj  
28

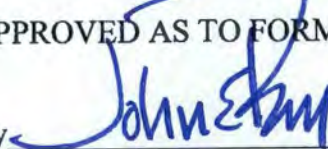
**MARCH JOINT POWERS AUTHORITY**

A joint powers agency

1  
2  
3  
4  
5  
6  
7  
8  
9  
10  
11  
12  
13  
14  
15  
16  
17  
18  
19  
20  
21  
22  
23  
24  
25  
26  
27  
28

By   
LORI STONE  
Executive Director

ATTEST:   
Printed Name Carey L. Allen  
Title Admin Prof Svcs / mgr

APPROVED AS TO FORM:  
By   
Best, Best & Krieger LLP  
MIPA General Counsel

Cooperatve Agreement  
Sunnymead MDP - Line B, Stage 3 (Heacock Channel)  
02/04/13  
TT:bj




DATE OF AERIAL IMAGERY: 2010

RIVERSIDE COUNTY FLOOD CONTROL  
AND WATER CONSERVATION DISTRICT


COOPERATIVE AGREEMENT  
Sunnymead MDP - Line B, Stage 3 (Heacock Channel)  
Project No. 4-0-00011

Exhibit A

**LEGEND**

 District Drainage Facilities

CONCEPTUAL



NOT TO SCALE

MEMORANDUM OF AGREEMENT  
BETWEEN  
THE UNITED STATES OF AMERICA  
DEPARTMENT OF THE AIR FORCE  
AND  
THE MARCH JOINT POWERS AUTHORITY

Made and entered into between March Air Reserve Base (MARB), an Air Force Reserve Component (AFRC) installation, hereinafter referred to as the "USAF", acting by and through the Commander, 452<sup>nd</sup> Air Mobility Wing, and the March Joint Powers Authority, hereinafter referred to as the "MJPA", with its principal place of business at 23555 Meyer Drive, Riverside, CA 92518.

WITNESSETH:

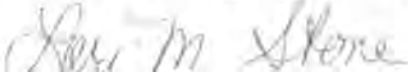
WHEREAS, the USAF and MJPA wish to work collaboratively to expedite the completion of certain storm water management facilities known as the Heacock Channel in order to provide necessary flood control and drainage protection to the adjacent areas; and

WHEREAS, the USAF owns adjoining property on and along the Heacock Channel at the MARB, hereinafter referred to as Stage 3 of the Heacock Channel Project, and as illustrated on the attached Exhibit A; and WHEREAS, the MJPA will administer the design contract for Stage 3 pursuant to Section II.2 of an existing Cooperative Agreement for Sunnymead MDP – Line B (hereinafter referred to as Coop Agreement) Project No. 4-0-00011 (attached hereto as Exhibit B): causing Stage 3 design plans to proceed from 35% (previously funded under the Coop Agreement) to 100% completion. The MJPA is requesting funding in the amount of approximately one hundred and twenty two thousand (\$122,000) dollars by the USAF to complete the remaining portion of the Stage 3 design.

NOW, THEREFORE, the USAF accepts the responsibility to pay the remaining associated design costs, approximated at one hundred twenty two thousand dollars (\$122,000), but not to exceed one hundred and fifty thousand (\$150,000) dollars. Costs exceeding one hundred twenty two thousand dollars (\$122,000) shall require written approval by the USAF.


1. **BASIS OF DESIGN:** The MJPA will ensure that the design meets all requirements of the Federal, State or local regulatory agencies. Further, the design must comply with the specific requirements of Riverside County Flood Control and Water Conservation District (District), and all plans must be submitted to District for review and approval.
2. **REVIEW:** The USAF reserves the right to review each design submittal for the design of Stage 3. The USAF agrees to not unduly delay the design work being performed due to its review. The MJPA shall forward copies of all design submittals and reports to USAF.
3. **FINAL DESIGN DRAWINGS:** The MJPA will provide the USAF with (2) sets of signed 100% complete design drawings and electronic AutoCad (2012 or newer) files upon completion of the design Stage 3 stormwater channel design. USAF acknowledges that a separate agreement with the District may be required by the District prior to that agency's final approval of Stage 3 construction plans; however, such action is not a part of this MOA.
4. **PAYMENTS:** Certified invoices shall be forwarded to the Air Force for reimbursement at the following address, 452nd Base Civil Engineer, 610 Meyer Dr., Bldg. 2403, March ARB, CA 92518-2166 and payments will be processed within 30-days of receipt.

IN WITNESS WHEREOF, the parties have executed this Agreement as of the date written below.

BY   
LORI M. STONE  
Executive Director  
March Joint Powers Authority  
23555 Meyer Drive, Riverside, CA 92518

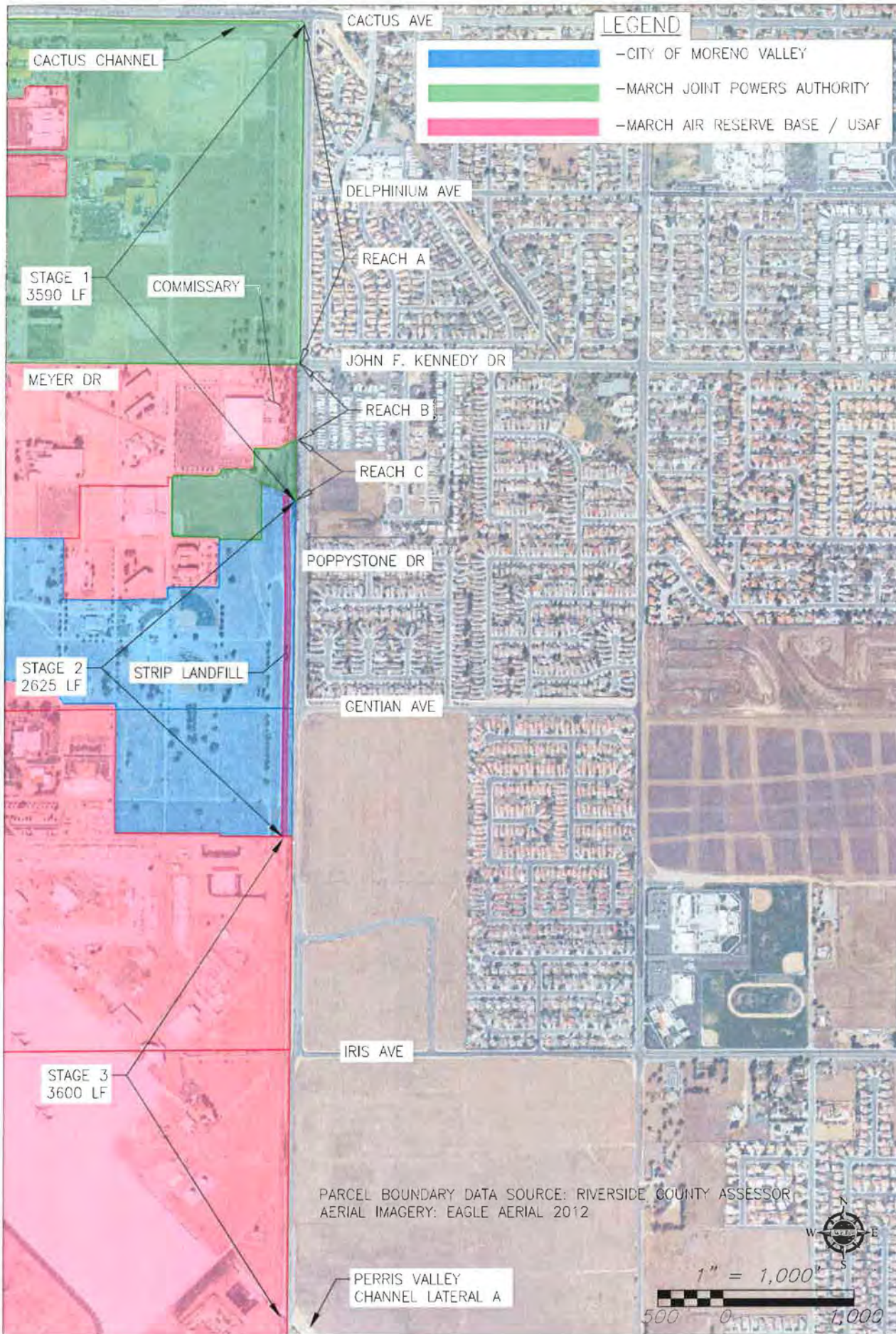
7/29/14  
Date

UNITED STATES OF AMERICA

BY   
RUSSELL A. MUNCY, Colonel  
452nd Air Mobility Wing  
Commander

28 Jul 2014  
Date

EXHIBIT "A"  
 USAF/MJPA M.O.A. JULY 2014



**LEGEND**

- CITY OF MORENO VALLEY
- MARCH JOINT POWERS AUTHORITY
- MARCH AIR RESERVE BASE / USAF

PARCEL BOUNDARY DATA SOURCE: RIVERSIDE COUNTY ASSESSOR  
 AERIAL IMAGERY: EAGLE AERIAL 2012

1" = 1,000'

500 0 1,000

ENGINEERING CONSULTANTS 3758 McCray Street Riverside, CA 92506 PH: (951) 686-1070 FAX: (951) 788-1256	
ALBERT A. WEBB ASSOCIATES	
W.O. 13-55	SHEET 1 OF 1 SHEETS
HEACOCK CHANNEL PROJECT REFINED ALTERNATIVES SUMMARY HYBRID CHANNEL & RCB ALTERNATIVES +PRELIMINARY* G:\2013\13-0055\Drawings\PCR Phase\13-0055-C-pre_pdr_ex.dwg	

Page Intentionally Blank

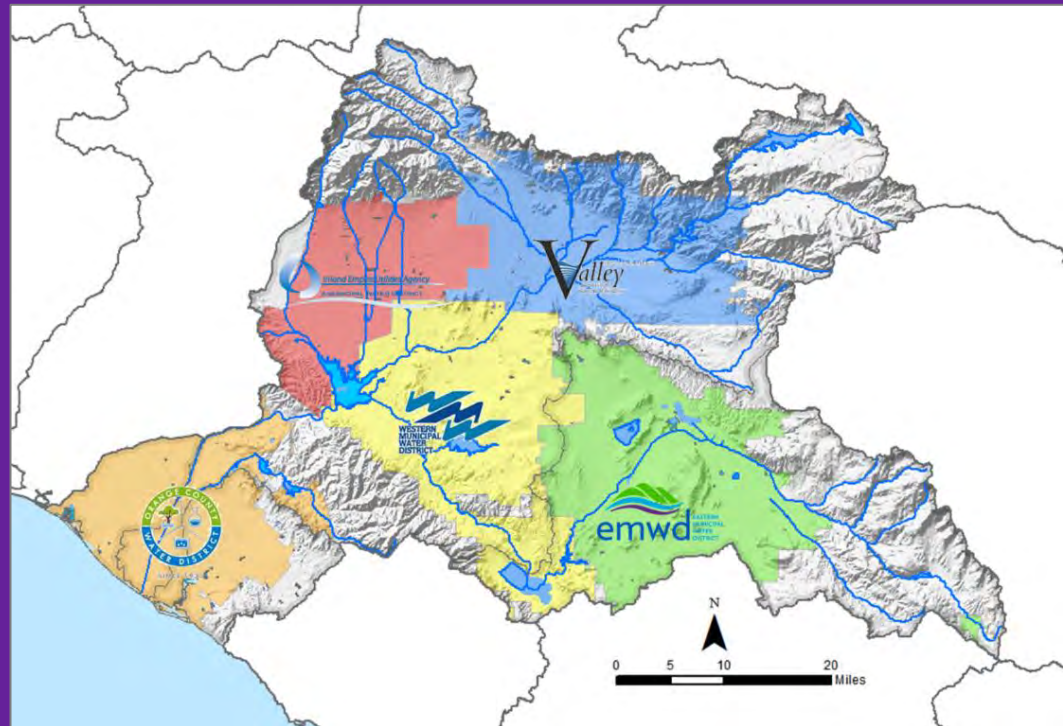


# SARCCUP Optimization Using the Decision-Support Model

DSM Scenarios and Findings

PA 23 Meeting

December 5, 2017

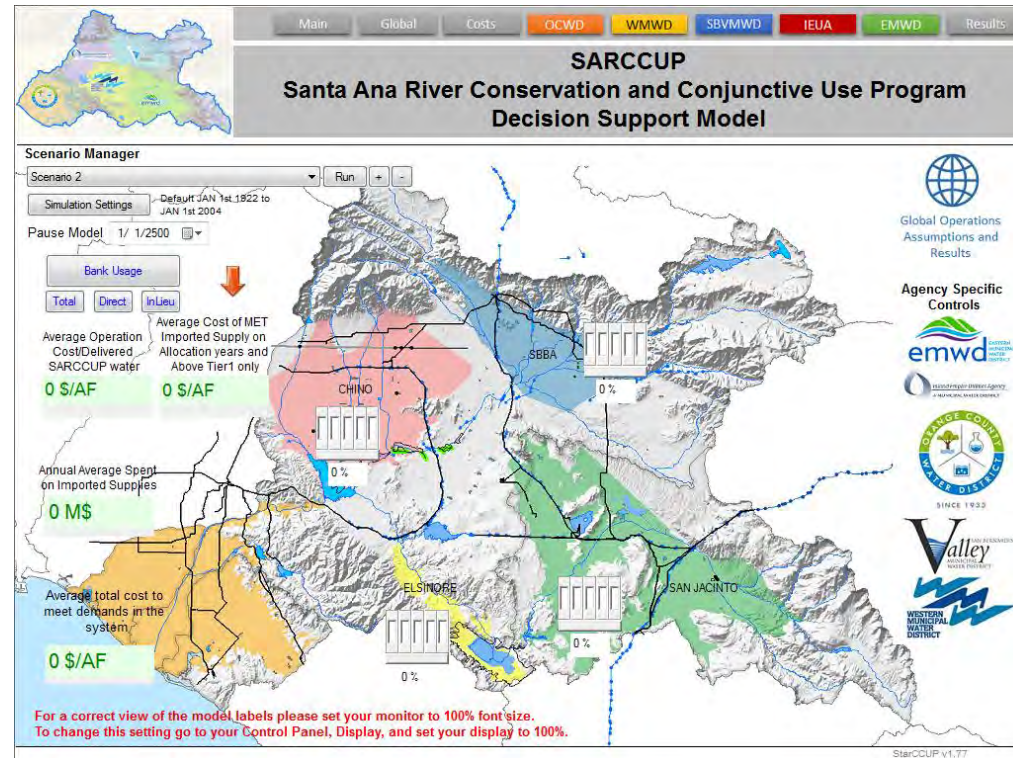


# Presentation Outline

- DSM Scenarios
- Summary Results
- Decision Process and Dependencies
- Recommendations
- Next Steps

# DSM Model Overview

- Maximize the storage of wet year SWP water to produce “dry year yield”
- Simulate operations
- Identify any constraints
- Optimize operations and quantify the benefits and costs
- Determine ultimate size of the bank



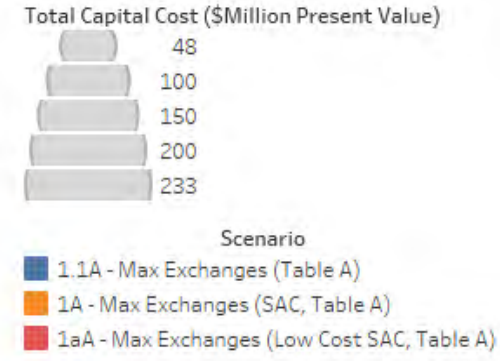
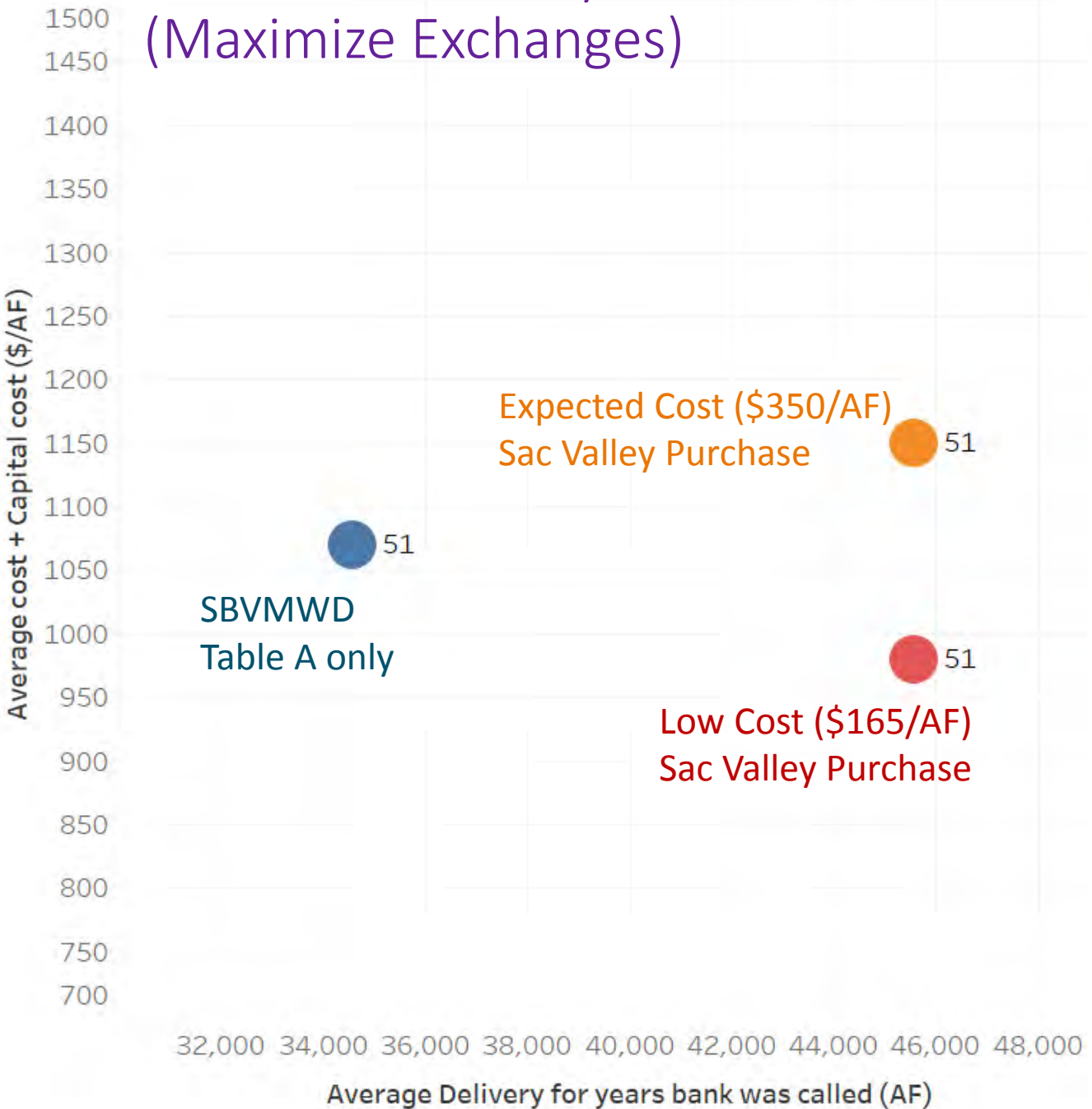
# DSM Scenarios Evaluated

- Scenario 1 – Maximize Exchanges (Baseline)
  - Production wells and treatment in Chino/IEUA
  - San Jacinto Recharge Project
  - La Sierra pipeline
- Scenario 2 – New Facilities to Deliver Non-MWD Supplies (Sac Valley purchases)
  - Baseline Feeder Extension, SBBA production wells
  - RPU facilities, SBBA production wells
  - Riverside-Corona Feeder, Cannon Campbell pipeline, SBBA production wells
- Scenario 3 – Chino Basin Bank Resizing
  - Reduce Chino Bank to 48,000 AF and 0 AF
  - Add storage at OCWD (36,000 AF) and WMWD (10,500 AF)
- Scenario 4 – Local Conveyance with Reduced Chino Bank
  - Baseline Feeder Extension and RPU + Cannon Campbell
  - Reduced Chino Bank size and OCWD/WMWD bank storage

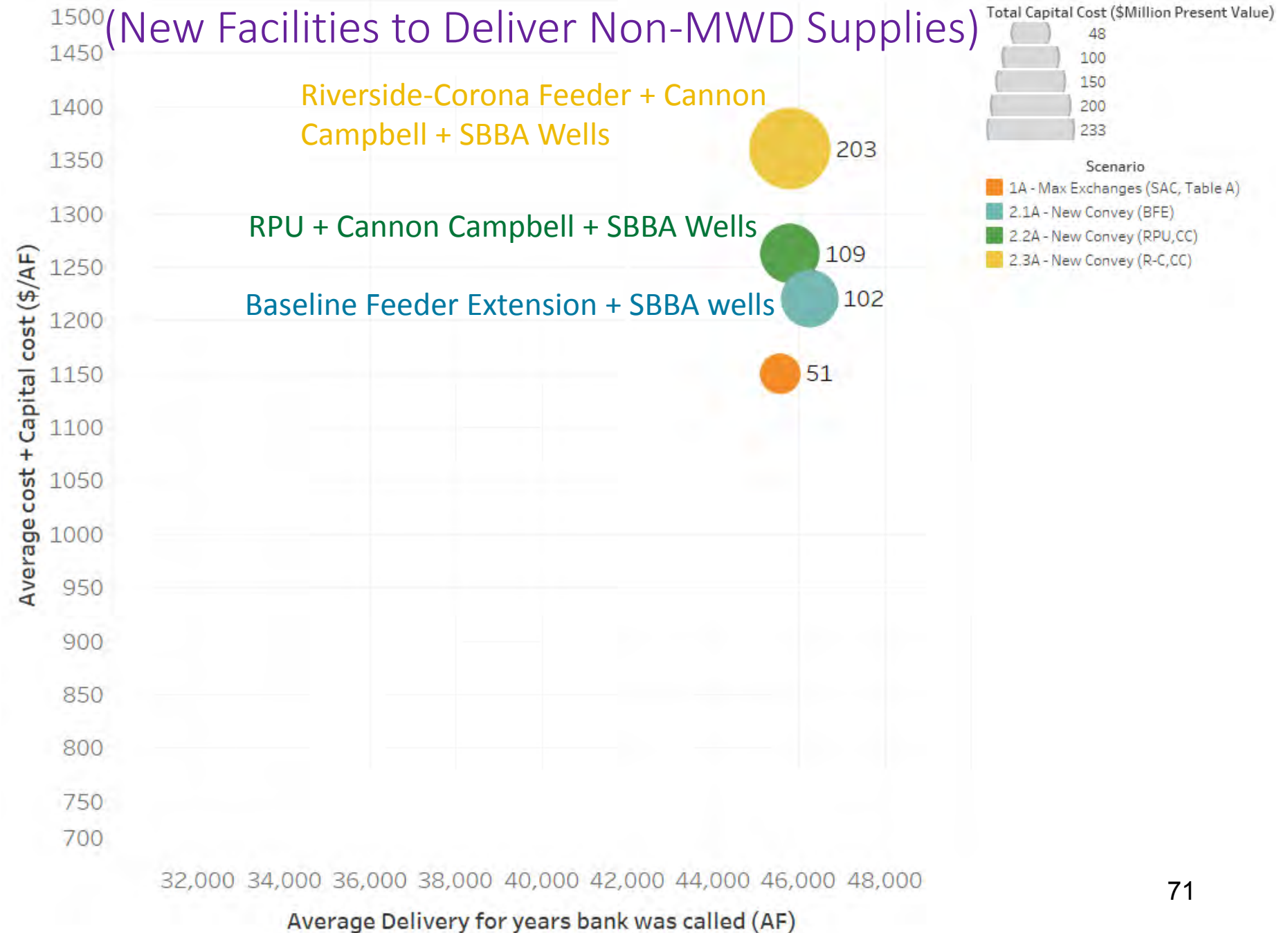
# Information/Modeling Updates

- Cost Assumptions
  - Reviewed and refined substantially
- Model Enhancements
  - Capacity limits, cost approach, available supply refinements
- Chino Basin losses
  - Refined estimate of one time, five percent loss for Chino Basin
  - Losses are now consistent with all other basins
- Baseline Feeder Extension costs and limits
  - Grant application costs were found appropriate
  - Five SBBA extraction wells
  - BFE constrained by quantity of treated water demand
- OCWD infrastructure needs

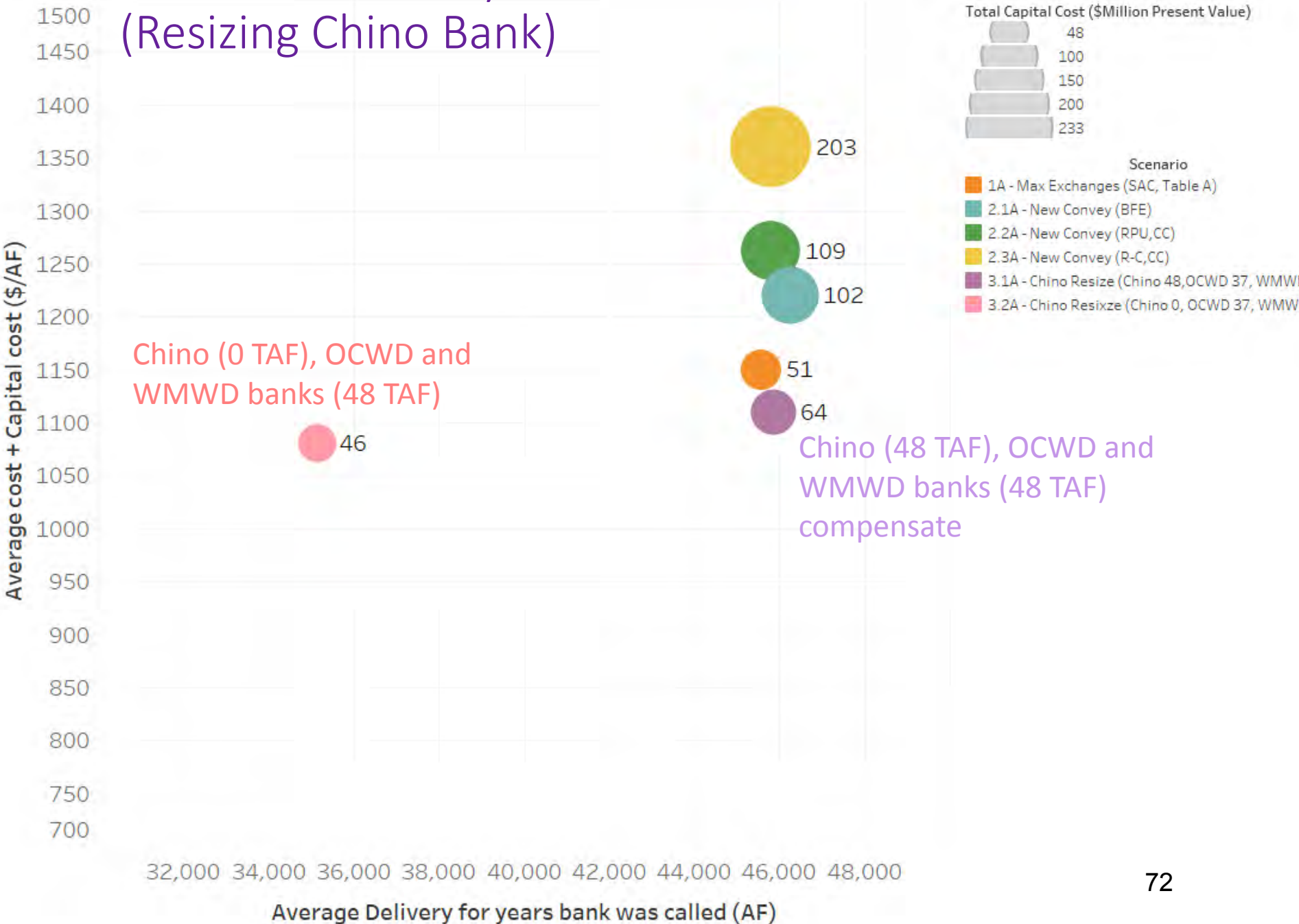
# Scenario Summary Results – Scenario 1 (Maximize Exchanges)



# Scenario Summary Results – Scenario 2 (New Facilities to Deliver Non-MWD Supplies)

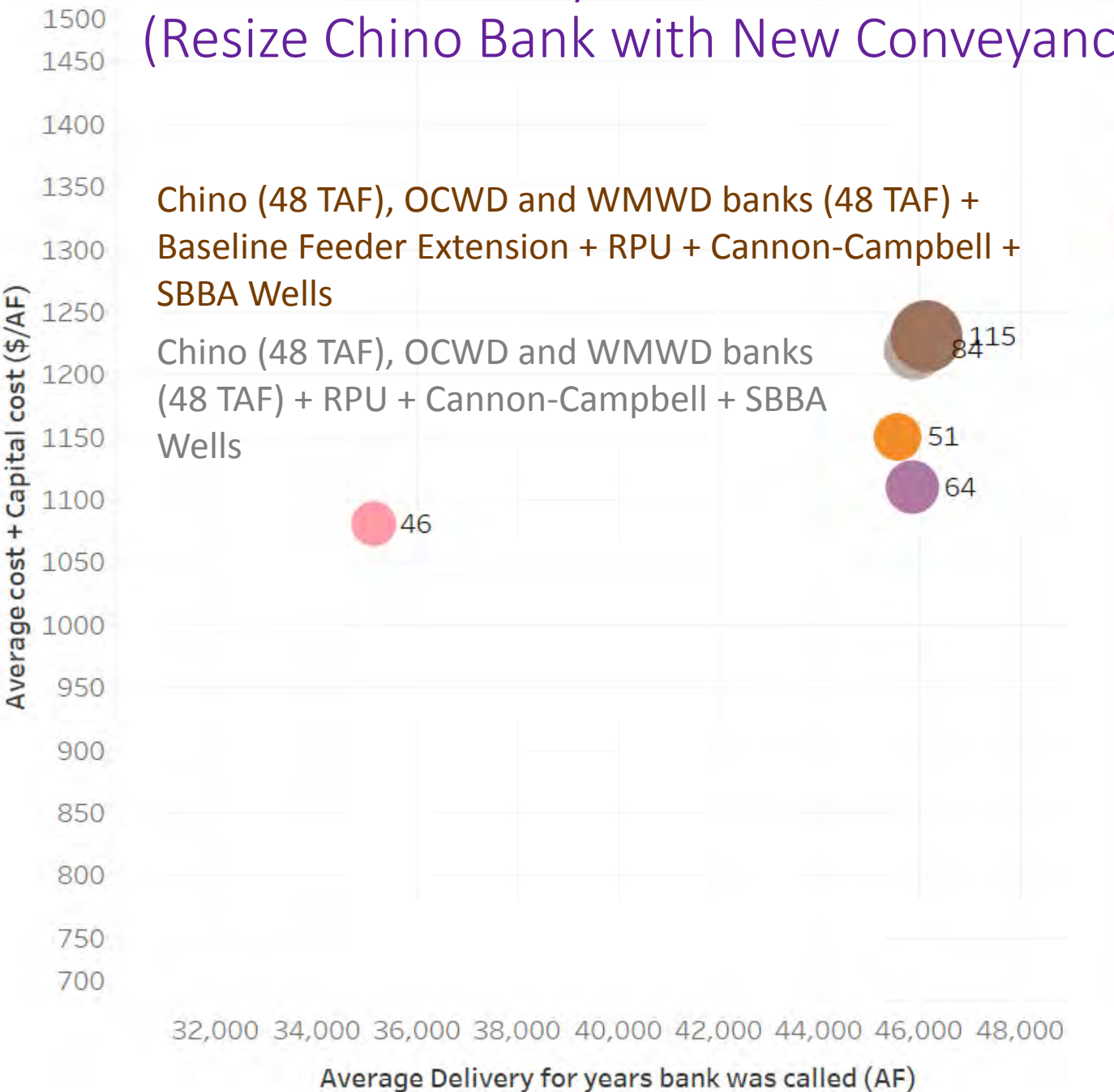


# Scenario Summary Results – Scenario 3 (Resizing Chino Bank)



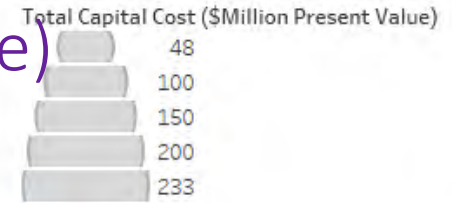


# Scenario Summary Results – Scenario 4 (Resize Chino Bank with New Conveyance)



**Chino (48 TAF), OCWD and WMWD banks (48 TAF) +  
Baseline Feeder Extension + RPU + Cannon-Campbell +  
SBBA Wells**

Chino (48 TAF), OCWD and WMWD banks  
(48 TAF) + RPU + Cannon-Campbell + SBBA  
Wells



- Scenario
- 1A - Max Exchanges (SAC, Table A)
  - 3.1A - Chino Resize (Chino 48, OCWD 37, WMWD)
  - 3.2A - Chino Resixze (Chino 0, OCWD 37, WMWD)
  - 4.1A - Chino Resize (Chino 48, OCWD 37, WMWD)
  - 4.2A - Chino Resize (Chino 48, OCWD 37, WMWD)

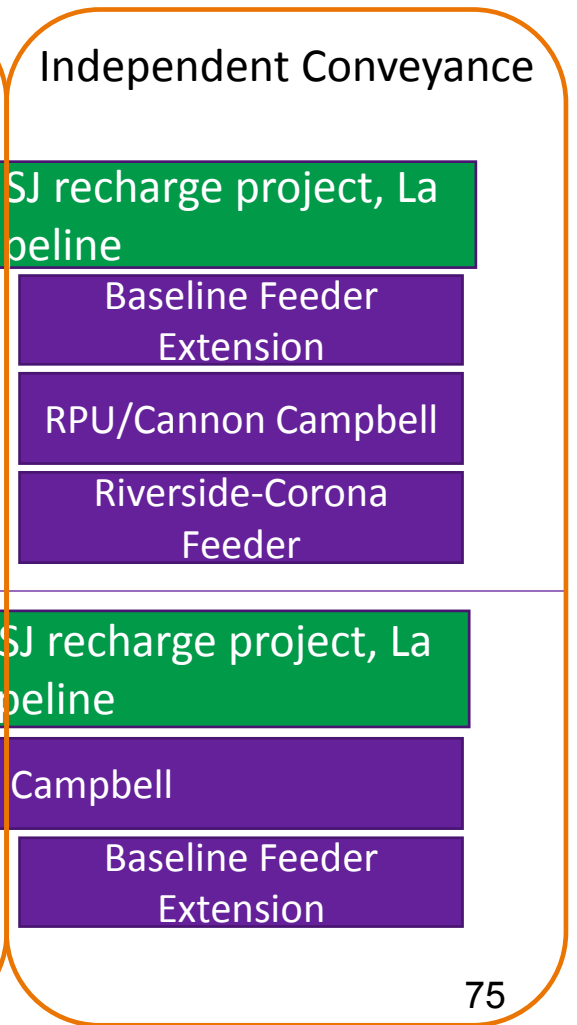
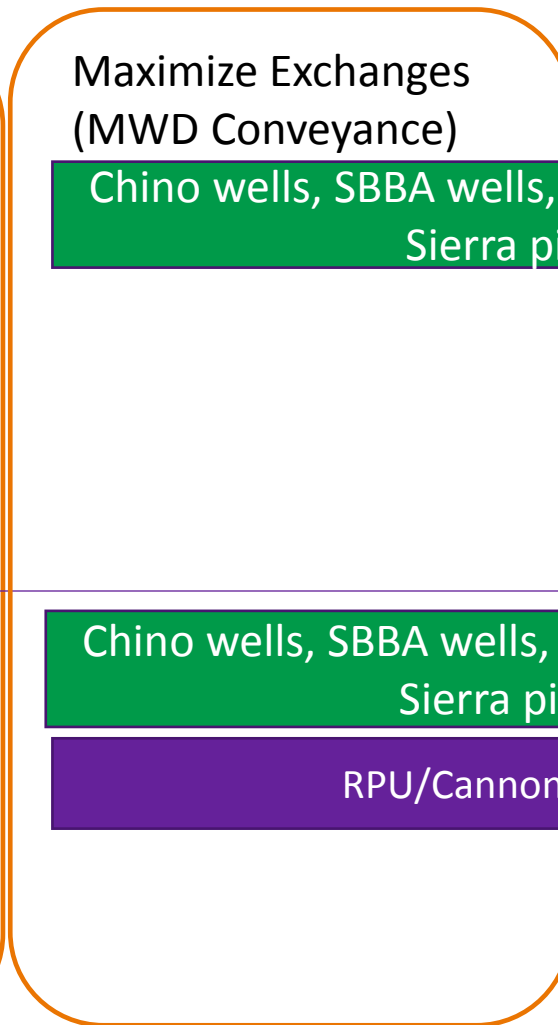
# Summary of Modeling Results

Scenario	Dry Year Yield (AF/Yr)	Unit Cost (\$/AF, includes capital cost recovery)	Capital Cost Recovery (\$/AF)	Capital Cost (\$M)
<b>1A – Maximize Exchanges</b>	<b>45,600</b>	<b>\$1,150</b>	<b>\$62</b>	<b>\$51</b>
2.1A – New Conveyance (Baseline Feeder Extension)	46,300	\$1,220	\$123	\$102
2.2A – New Conveyance (RPU + Cannon Campbell)	45,800	\$1,220	\$87	\$72
2.3A – New Conveyance (Riverside-Corona Feeder + Cannon Campbell)	45,800	\$1,360	\$247	\$203
<b>3.1A Chino Resize (Chino 48 TAF, OCWD 37 TAF, WMWD 10.5 TAF)</b>	<b>45,900</b>	<b>\$1,110</b>	<b>\$78</b>	<b>\$64</b>
3.2A Chino Resize (Chino 0 TAF, OCWD 37 TAF, WMWD 10.5 TAF)	35,100	\$1,080	\$73	\$46
4.1A Chino Resize (Chino 48 TAF, OCWD 37 TAF, WMWD 10.5 TAF) + BFE + RPU + Cannon Campbell	46,100	\$1,230	\$139	\$115
<b>4.2A Chino Resize (Chino 48 TAF, OCWD 37 TAF, WMWD 10.5 TAF) + RPU + Cannon Campbell</b>	<b>45,900</b>	<b>\$1,220</b>	<b>\$102</b>	<b>\$84</b>

# Decision Process and Dependencies

What storage contributions to consider?

What conveyance is desirable/ permissible?



# MWD Policy Uncertainties

## 1. Storage of MWD member agency water in SBV Bank - outside of MWD Service Area

- MWD can only bill for water when it crosses the meter into their system. Consistent with MWD policies, MWD will not allow MWD member agencies to purchase then store water outside their service area to bring it back in at a later date
  - OPTION 1: Valley stores its own water, for benefit of SARCCUP (energy cost paid by SARCCUP agencies at the time its stored?); when MWD moves the water into its system via in-lieu SWP delivery of Valley's water, MWD pays the \$100/AF to Valley that includes energy cost, and MWD member agencies pay Full Service Rate to MWD at time of delivery, and get reimbursed energy cost by Valley. SARCCUP agencies cannot exceed 50% of total available SBV water for purchase, counts as Extraordinary Supply. This option is preferred by MWD.
  - OPTION 2: MWD purchases/obtains physical storage in Valley's bank; MWD buys 100% of the water & stores it (water is *all* MWD-agency water); SARCCUP agencies can purchase up to 50% of the water in the future, when in allocation as it counts as Extraordinary Supply water, at the full rate in effect at the time of 'take'. MWD staff not sure if this option would fly with mgt.

## MWD Policy Uncertainties – cont'd

2. **Once MWD member agencies have purchased Valley Surplus SWP water and stored in their banks (i.e., within MWD service area), is there a cost associated with in-lieu deliveries provided via MWD at the time of “take”?**
  - Yes, it's different water. Let's say Valley surplus water is purchased by Western and stored in IEUA's bank for future use. Western then calls for the water:
    - i. IEUA pumps it and uses it locally and foregoes their MWD delivery of the same volume
    - ii. Western then asks MWD to deliver that in-kind amount to them in addition to their normal MWD deliveries
    - iii. Western pays for that additional increment of MWD water at the current MWD rate at the time of delivery, and that additional water may be counted as Extraordinary Supply

## MWD Policy Uncertainties – cont'd

- 3. Does MWD allow for wheeling of non-Table A water (i.e. SAC Valley/transfer water) through Valley's system for delivery directly to MWD member agency?**
  - This question was not resolved by staff; MWD needs legal input
  - MWD did state that any scenario cannot compete with MWD's purchase of water or harm MWD in any way
    - For example, demands on MWD are diminished by another agency providing supply to meet a MWD member agency demand

# Recommendations

- Determine storage contributions first
  - SBBA, Chino, San Jacinto, OCWD, WMWD Basins
  - **Recommendation: SBBA (64 TAF), Chino (50 TAF), San Jacinto (19.5 TAF), OCWD (36 TAF), WMWD (10.5 TAF)**
- Resolve MWD policy issues to determine whether independent conveyance is desired/useful for SARCCUP
- Match conveyance facilities with storage and MWD policy findings
  - e.g. Riverside Public Utilities pipeline and Cannon Campbell pump station required if Riverside bank is included,
  - e.g. No independent conveyance would be recommended if MWD policy does not color water to SARCCUP agencies on “put”
  - **Recommendation: Chino/IEUA South Zone production wells, San Jacinto Recharge Project, La Sierra pipeline, Riverside Public Utilities pipeline, Cannon Campbell pump station**

Page Intentionally Blank



## **OWOW STEERING COMMITTEE MEMORANDUM NO. 2018.4**

**DATE:** January 25, 2018

**TO:** OWOW Steering Committee

**SUBJECT:** OWOW Plan Update 2018 Status

**PREPARED BY:** Mike Antos, Senior Watershed Manager

### **RECOMMENDATION**

It is recommended that the OWOW Steering Committee receive and file this information report about the current status of the OWOW Plan Update 2018.

### **DISCUSSION**

The end of December 2017 was an internal deadline for the Pillar Workgroups to share with SAWPA staff the current updated chapter material. Of the ten pillars and eleven chapters under development, SAWPA received four rough draft chapters, four annotated outlines, and three commitments for work to be submitted in January. This deadline was an opportunity to gauge progress, and overall the Pillar workgroup chapters material is strong. The next deadline is at the end of April 2018 when the Pillar Workgroups will submit final draft chapters to be shared amongst all the Pillars. In May and June, the Pillars will consider each-others work, and revise as needed to fully capture the overlaps and gaps that will become clear.

SAWPA staff released an RFQ for technical writing and grant writing services in the Fall, and in December selected an on-call list of consultants to support the Authority on many fronts. A Task Order was approved by the SAWPA Commission in December for Dudek Consultants to support the OWOW Plan Update 2018 process. Their team is supporting SAWPA staff in the updates needed in the OWOW 2.0 Plan chapters that are not related to the Pillar Workgroups, and their staff editors will be involved as the OWOW Plan Update 2018 is assembled. They will interact with the Pillar Integration meetings in support of the update.

On December 14, by request of the stakeholders, a special Pillar Integration meeting was held to focus on Sediment Management. Three guest speakers attended to share expertise about the issue, and a robust question & answer discussion followed. Thanks to Sterling Klippel from Los Angeles County Public Works, Erica Kemp Weitzman from the United States Army Corps of Engineers, and Lindsay Tuenis of ICF International for sharing their expertise.

Also since last report, SAWPA worked with the US Department of Interior Bureau of Reclamation to institute a partnership agreement for Reclamation's support on the OWOW Plan Update 2018. Reclamation completed significant work for OWOW 2.0 in the Basin Study program. This time the work will be more tightly contained to issues of climate risk & response.

Page Intentionally Blank

## **OWOW STEERING COMMITTEE MEMORANDUM NO. 2018.5**

**DATE:** January 25, 2018

**TO:** OWOW Steering Committee

**SUBJECT:** Disadvantaged Community Involvement Program Status

**PREPARED BY:** Mike Antos, Senior Watershed Manager

### **RECOMMENDATION**

It is recommended that the OWOW Steering Committee receive and file this information report about the current status of DCI Program.

### **DISCUSSION**

The DCI Program is currently focused on Program Element 1, Strengths & Need Assessment, though has work within the other two program elements as well. Since the last update, several activities of note have taken place.

An ethnographically-informed interview instrument was developed by the program team, which is now being used by Local Government Commission in the watershed for interviews with elected leaders. In the coming months, California State University will host non-profit and other community groups to also participate in the interview / focus group process. SAWPA staff and the CivicSpark Water Fellows are scheduling similar meetings with water agencies, and California Rural Water Association will interview staff and leaders at the many mutual water companies that serve overburdened communities. Data collected from those interviews is transcribed, anonymized, and analyzed by the team. It is too soon to share any conclusions, but the team is enthusiastic about the process to-date.

The interview / focus group process will result in a report of the strengths and needs of disadvantaged communities in the watershed related to watershed management. Without presupposing the conclusion of the research, it is expected that technical/infrastructural topics like failing septic systems, education and communication topics, financial topics, as well as decision-making topics will be brought to light. Following the goals embedded in Prop 1 Disadvantaged Community Involvement Program guidelines, the interview instrument was specifically designed, and all those conducting interviews trained, to uncover items previously omitted from planning in the watershed.

On January 12 SAWPA staff were invited to and presented at an event in Carson held by the CSU under a different grant program (see attached agenda). SAWPA discussed the OWOW and DCI programs alongside the team conducting the same programs in Los Angeles and Ventura Counties. This is part of an ongoing effort by the CSU to daylight the links between the many state programs currently working to support overburdened and disadvantaged communities. During the event a

breakout session was held about the DCI Program, where interested participants were able to contribute and learn how to become more deeply engaged in the effort.

On December 7 the second Homelessness & Water Symposium was held in Fullerton. Ninety people attended the event to hear from two panels and a keynote from the Inland Empire Waterkeeper. A full recap of the event was published on the SAWPA blog (see attachment), and received media coverage at the InlandEmpire.us website. SAWPA's next steps from the two symposia are still in development, though the City of Riverside has expressed interest in partnering with the Authority on a pilot effort. Elsewhere in the watershed the Inland Empire Waterkeeper has announced a Clean Camp program, and the Regional Water Quality Control Board staff are discussing ways to fill the data gaps in understanding the impact encampments have on water and habitat quality. Attachment 3 is a handout produced for the event that describes the links between watershed management and homelessness, including in each case an example project / program being conducted to alleviate challenges related to homelessness & water.

Over the coming year the Strengths & Needs Assessment will be completed and produce a report, and the Education & Engagement efforts will begin. The Program Element 2, Education and Outreach includes language translation consultant support services which would be available via an application from watershed stakeholders, "trust the tap" campaign project to explain the value and safety of tap water particularly to new immigrant communities and community engagement training and intern engagement programs.

Throughout the grant program, community strengths or needs that would benefit from project development will be documented, and the DCI Program Technical Advisory Committee will recommend to the Steering Committee how best to allocate the Project Development funds within the grant as described under Program Element 3 Project Development. The TAC is currently constituted of one member of each of the program partners and one outside expert. Additional members are being recruited for the every-other month meetings, working towards a full roster of nine members. Steering Committee recommendations for those expenditures will be presented to the SAWPA Commission for concurrence.

The DCI Program is on-schedule and on-budget.

Attachments:

1. CSU Agenda
2. SAWPA Water Blog
3. Watershed Management and Homelessness Handout

**Organizing Disadvantaged Communities for Success in Addressing Energy, Air Quality and Water Management Issues**

Hosted by: California State University Dominguez Hills  
January 12, 2018

- 7:30-8:30 Registration and Networking
- 8:30-8:35 Welcoming Remarks *David Gamboa, Assistant Vice President, External Relations, CSUDH*
- 8:35-9:00 Keynote Address  
*Jawane Hilton, Council Member City of Carson*
- 9:00-9:30 Opening General Session: LACI's Energize California Initiative - Goals and Opportunities in Disadvantaged Communities/Interactive Engagement *Amanda Sabicer, VP Energize California, Los Angeles Cleantech Incubator*
- 9:40-10:20 Concurrent Listening Sessions on Energy Issues:  
Opportunities and Challenges in Deploying New Energy Technologies
- Session 1: Focus on Electric Vehicle Deployment, *Emily Bjorklund Drake, LA County Director, Energize California, LACI*
  - Session 2: Focus on Energy Efficiency in Buildings, *Kelly Ferguson, Santa Barbara & Ventura Counties Director, Energize California, LACI*
- 10:20-10:40 Break
- 10:40-11:10 Second General Session: California Department of Water Resources Disadvantaged Community Involvement Program: The Greater Los Angeles County Funding Area and the Santa Ana Watershed Funding Area - Goals and Opportunities *Grace Kast, Executive Officer, Gateway Water Management Authority. Mike Antos, Senior Watershed Manager, Santa Ana Watershed Project Authority*
- 11:20-12:00 Concurrent Breakout Sessions for DWR DACIP Programs
- Session 1: How to become involved in the SAWPA DCI Program *Mike Antos, Senior Watershed Manager, Santa Ana Watershed Project Authority*
  - Session 2: How to become involved in the Los Angeles DACIP *Lynn Rodriguez, Project Manager, Watersheds Coalition of*

*Ventura County; Grace Kast, Executive Officer, Gateway Water Management Authority.*

- 12:00-1:15 Lunch with Speakers. The Strategic Growth Council: Cap and Trade Program Development for Assisting Underserved Communities to Improve Air Quality *Monica Palmeira, Outreach Program Manager, Strategic Growth Council*
- CAL FIRE Urban and Community Forestry California Climate Investments Grant Program *David Haas, Region Urban Forester for Los Angeles and Ventura Counties, CAL FIRE*
- 1:15-2:20 General Session 3: Energy Project Competition/Toro Tank: Organizations Presenting Unique Energy, Air Quality, or Water Projects to a Panel of Judges *Mike Grimshaw, Director, CSUDH, Entrepreneurial Institute*
- 2:20-2:50 General Session 4: City of Carson as a Case Study of Disadvantaged Communities Evaluation Tools *Mike Reibel, Cal Poly Pomona*
- 2:50-3:10 Concluding Remarks/Next Steps/Staying Involved. *Ken Farfsing, City of Carson*
- 3:10 Adjourn



Finding Solutions to a Wicked Problem

### Finding Solutions to a Wicked Problem

After a successful **Homelessness and Water Symposium** held in June 2017<sup>1</sup>, SAWPA and the Inland Empire Waterkeeper partnered to hold a follow-up symposium on December 7th at the Fullerton Public Library Conference Center. Members of water and social service public agencies, as well as elected leaders, nonprofit staff, and community members from Orange, San Bernardino, Riverside, Los Angeles, and San Diego counties gathered for discussion about the nexus of homelessness and water.



The interactive format welcomed dialog, such as San Bernardino supervisor Josie Gonzalez, pictured on the right, addressing fellow symposium attendees.

### Follow Us

Popular	Recent
	<a href="#">Regional Integrated Water Resources Workshop</a> Wednesday, December 4, 2013
	<a href="#">Local Disadvantaged Community Project Funded</a> Thursday, July 2, 2015
<a href="#">Recent News on the Forests</a> Monday, November 2, 2015	

### Archives

- › [January 2018](#)

---

- › [August 2017](#)

---

- › [July 2017](#)

---

- › [November 2016](#)

---

- › [May 2016](#)

---

- › [November 2015](#)

---

- › [July 2015](#)

---

- › [January 2015](#)

---

- › [October 2014](#)

---

- › [August 2014](#)

---

- › [June 2014](#)

---

- › [February 2014](#)



In the photo above, symposium attendees discuss the challenges of good data about people experiencing homelessness while gathered around a map of homeless encampments in the watershed.

The symposium further illuminated the value and appropriateness of partnerships between social services providers and water agencies to support communities of people experiencing homelessness.

To start the day, symposium facilitator Dr. Mike Antos, Senior Watershed Manager at SAWPA, shared that the wildfires in Los Angeles and Ventura counties had prevented panelists Jim Brown of the San Fernando Rescue Mission and Leepi Shimkhada of the Los Angeles County Department of Health Services from joining the symposium as planned. He explained that the theme of the event was a progression from the first symposium. At the first symposium the focus was on introducing water managers to the the social services sector players and their ongoing response to homelessness. At this second event, now that the two worlds have met, the focus was on how to practically move forward through on alleviating homelessness to help people and the watershed.

› [December 2013](#)

› [October 2013](#)

## Categories

› [Brine Line](#)

› [Commission](#)

› [OWOW](#)

› [Round Table](#)

› [Uncategorized](#)

## Meta

[Log in](#)

[Entries RSS](#)

[Comments RSS](#)

[WordPress.org](#)



Dr. Cheryl-Marie Hansberger, from the Mayor's office in the City of Riverside, kicked off the first panel.

The first panel discussed the value of partnerships in the work of alleviating homelessness, and managing water. Dr. Cheryl-Marie Hansberger, Chief of Staff for Riverside Mayor Rusty Bailey, spoke first about the city's [Love Your Neighbor Initiative](#) that recruits the help of faith-based leaders to help support and shelter "neighbors without homes." When the city began the effort, they were overwhelmed by positive response by members of faith based organizations in Riverside and from smaller cities adjacent to or nearby Riverside. Based on this response from the community, the City of Riverside realized the program should be expanded to be regional in its approach and impact. Over time the strong community engagement provided important voices that led to new policy, countering the all-to-frequent sense of "not-in-my-backyard". Dr. Hansberger shared that their most important lesson learned as they undertook this initiative was the need to diversify the resources, both people and money, to tackle homelessness. Public government funding is a critical piece, but often has restrictions on how it gets spent. Having outside grants, other cities, and civil-society partners has



been an important answer to limited and restricted resources. Dr. Hansberger concluded with, “[the] focus on partnerships has been life-changing for us.”



Mike Carmon, of the nonprofit OC United, on the first panel.

Mike Carmon spoke next about the **Jobs for Life Program** at the Fullerton faith-based non-profit, OC United, which focuses on supporting vulnerable community members. Jobs for Life is an 8-week training program that supports character development, social and work skills, all through a focus on honesty, courage and loyalty. Each student is assigned a mentor who will be with them for one year. OC United has developed partnerships with businesses who agree to provide interviews to graduate of the program for entry-level job positions. Carmon talked about the successes of the program in helping people as young as 23 and as old as 73 find careers and head down the path towards securing permanent housing.



Thomas P. Evans, a SAWPA Commissioner, on the first panel.

Thomas P. Evans, SAWPA Commissioner and Director of the **Western Municipal Water District**, shared that the water management agencies spend hundreds of millions of dollars building projects and conducting programs that maintain water quality in the streams of the Santa Ana River Watershed, and that homelessness and those investments are not considered together. Providing safety for all people in the river, and assuring that water supplies are protected are significant missions for many agencies. He shared his new awareness that a common goal is shared by these water agency missions and those who are working specifically to support people experiencing homelessness. When water managers consider projects and expenditures, he believes there are ways to achieve water agency missions while also supporting Housing First principles, in partnership with cities and others who are working to alleviate homelessness.

During dialog following the presentations, the California legislative policy defined a **Human Right to Water** was discussed. On September 12, 2012, Governor Brown signed **AB 685**, making California the first state in the United States to legislatively recognize the human right to water. Under Water Code **Section 106.3** California

now acknowledges that “every human being has the right to safe, clean, affordable, and accessible water adequate for human consumption, cooking, and sanitary purposes.” Water is not only necessary for consumption, but is a linchpin for modern sanitation practices, a point which Dr. Antos highlighted to kick off the second panel which focused on the nexus between homelessness, water, and public health.



Three public health experts with experience supporting people experiencing homelessness made up the second panel.

The first speaker was Dr. Matthew Zahn, a pediatric infectious disease specialist. He affirmed that people who are experiencing homelessness suffer predominantly from ailments related to a lack of sanitation. Lack of access to clean bathrooms and water for washing in the homeless population is the driver to public health issues such as the Hepatitis A outbreaks which occurred in several southern California cities in the summer of 2017. Dr. Zahn shared that hepatitis A is spread fecal-orally and that if there is access to adequate sanitation facilities and proper practices are followed, there is no reason for a virus like Hepatitis A to spread. Zahn stated that “the sanitation situation that exists in Homeless populations in San Diego...is the driver for the issue here. It is the reason why we are having an outbreak we simply do not see in other populations in this country.” Dr. Zahn affirmed that we must make sure we are advocating for the right things and make sure there are sanitary facilities for all, not exclusive of individuals experiencing homelessness. He cautioned, however, that providing bathrooms or porta-potties that become overwhelmed by heavy use of large populations, or are not properly maintained, can spread illnesses. Zahn argued that adequate access to sanitation facilities is not just a public health concern but simply the humane thing to do. Dr. Zahn recognized that there are challenges of maintaining population health but that these challenges can be overcome by the right people being at the table. Dr. Zahn urged that by having various invested and knowledgeable stakeholders at the table, we can begin to collectively address the problem from a holistic and multi-faceted standpoint.

Mark Faucette from the LA County Department of Health Services (DHS), who joined the panel as a substitute for Leepi Shirkhada, spoke about the **Housing for Health** Division, which improves health outcomes for the vulnerable homeless populations. Housing for Health provides permanent supportive housing, recuperative care, and specialized primary care to individuals experiencing homelessness and who suffer from complex physical and behavioral health conditions. After giving a brief introduction to the program, Mr. Faucette highlighted that the success of Housing for Health lies in the emphasis that the program has placed on collaboration with other service providers in the community. During questions, Faucette referenced a **recent study** released by RAND Corporation about the fiscal impact of housing those who are experiencing homelessness. The report found that in LA County a 60% decrease in cost to the government is achieved when moving someone who is homeless into permanent supportive housing with appropriate medical care .

Paul Leon, a public health nurse who is CEO and founder of Illumination Foundation spoke last on the panel. **Illumination Foundation** was founded in recognition that people experiencing homelessness who are discharged from the hospital frequently lack access to appropriate recuperative care. Mr. Leon commented that when individuals come through his program for recuperative care for infirmities like trauma, they often have underlying ailments that are attributable to lack of sanitation (e.g. hepatitis, tuberculosis). Mr. Leon advocated that when moving forward in addressing issues related to homelessness, we need permanent supportive housing with programs for substance abuse and mental health services. Mr. Leon closed his panel address imploring that “we need to address this problem. Many of us in the community have the answer but we have to react, and now.”

After a brief break for lunch the Symposium wrapped up with a keynote speech from Megan Brousseau, a lifelong Riverside resident and Associate Director of the Inland Empire Waterkeeper. Ms. Brousseau emphasized that there are direct links between environmental health, social service, and public health. Ms. Brousseau took the occasion to unveil a collaboration between Inland Empire Waterkeeper and the City of Riverside on the Clean Camp Coalition program. The Clean Camp Coalition will work with individuals who are experiencing homelessness to empower them and provide them with the resources they need to keep their camps clean (e.g. garbage bags and scheduled trash pick-up). Ms. Brousseau underscored her program's

mission, stating that “we believe at Waterkeeper that the truest way to get clean water is through stewardship, through giving the river to the people, allowing them to love it and have a vested interest in it.”



Fullerton Councilmember Bruce Whitaker, Executive Director & CEO of Orange County Coastkeeper Garry Brown, and Director of Western Municipal Water District Tom Evans assemble care packages of clean socks, toothbrushes, and toothpaste to be handed out to individuals in need.

---

<sup>1</sup> Both Homelessness & Water symposia are components of the Disadvantaged Communities Involvement Program conducted by SAWPA via a Proposition 1 Integrated Regional Water Management grant administered by the California Department of Water Resources.

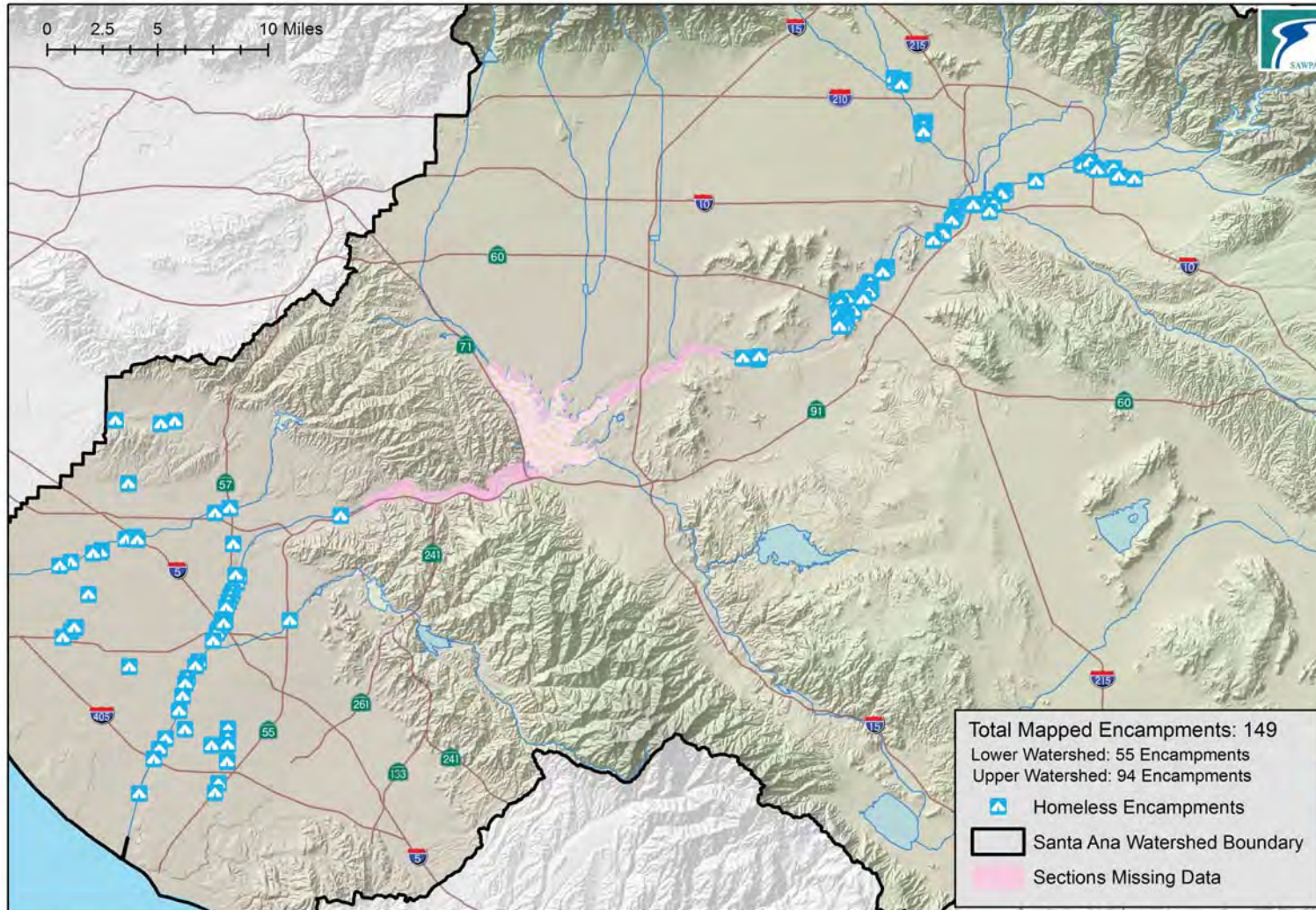
<sup>2</sup> <https://www.rand.org/news/press/2017/12/05/index1.html>

[Leave A Comment](#)

Name (required)	Email (required)	Website
Comment...		
<b>POST COMMENT</b>		



# Understanding the links between Homelessness & Water in the Santa Ana River Watershed



Note: Encampment data provided by the Orange County Department of Public Works, the Riverside County Sheriff's Department, and the San Bernardino County Sheriff's Department. Data for the Santa Ana River tributaries is incomplete or absent.

**Flood Risk**  
The lives of people living within the banks of streams are at risk from unexpected high flows and floods. Their property can also be lost to high flows, and can produce flooding concerns downstream.

**Water Quality**  
Streamside encampments can contribute to bacteria and trash pollution, both subjects to regulatory requirements in the Clean Water Act.

**Sanitation and Health**  
People experiencing homelessness rarely have access to bathrooms for urination and defecation. Washing to remain healthy is also often impossible or difficult, a reality which can have grave health consequences.

**Human Right to Water**  
In January 2013 California enshrined a Human Right to Water in law. It says that every human being has the "right to safe, clean, affordable and accessible water adequate for human consumption, cooking and sanitary purposes."

Providing these rights to people without reliable homes will be a significant challenge requiring shared attention.

The 2017 Point-in-time Homeless Count found Riverside County and Orange County respectively have 2,413 and 4,792 people experiencing homelessness, and San Bernardino County reported a count of 1,866 individuals without permanent shelter. Los Angeles County recently reported over 58,000 homeless community members.

Citynet, a local nonprofit organization that works with people experiencing homelessness, reported in August 2017 that 422 adults live along the Santa Ana River Trail from Chapman Avenue to Ball Road.

In September 2017 the city council of Anaheim declared a health and safety state of emergency in an effort to prioritize initiatives to alleviate homelessness within the city.

**Riparian Habitat & Recreation**  
Seeking to avoid attention, the banks and bottoms of streams are often chosen for encampments by people experiencing homelessness. This use can conflict with efforts to maintain healthy riparian habitat and recreational areas.

# Understanding the links between Homelessness & Water in the Santa Ana River Watershed

## Flood Protection

**The Issue:** People experiencing homelessness who live in the riverbed are at greater risk of hazards from increased river flow and flooding. This issue affects riverbed homeless encampments on multiple levels. Primarily, those living in the riverbed are at immediate personal risk of being swept away in the case of a flood. Additionally, floodwater and riparian habitat can be contaminated with waste and sewage that is picked up in the flow during a flood event.

**A Possible Model:** Citynet (<http://citynet.org/>) and Orange County Rangers conduct outreach along the Santa Ana River Trail prior to anticipated flood events and dam discharge to ensure the safety of the people experiencing homelessness who live in the flood channel.

## Water Quality

**The Issue:** Streamside encampments can contribute bacteria and trash pollution to the water bodies. Parts of the watershed hold regulatory limits on how much bacteria can be in the water; trash is also regulated under the Clean Water Act. Both pollutants can cause harm to habitat, plants and animals, and people.

**A Possible Model:** Downtown Streets Team out of San Jose (<http://streetsteam.org/san-jose>) in collaboration with Santa Clara Valley Water District has recruited people experiencing homelessness to help clean the Coyote Creek. The Clean Creeks, Healthy Communities project has restored recreational activity to the Coyote Creek area, as well as allowing for the return of natural riparian habitat.

## Sanitation and Health

**The Issue:** Without adequate bathroom facilities and water service in homeless encampments raw sewage and garbage leach into the waterways, significantly degrading water quality, which can lead to greater infrastructural costs for water agencies. The lack of bathrooms and water can also lead to compromised hygiene, which can pose a health risk. The summer 2017 hepatitis A outbreaks in San Diego and Los Angeles are examples of public health emergencies that have been tracked back to homeless encampments that lacked adequate public facilities.

**A Possible Model:** Lava Mae (<https://lavamae.org>) repurposes retired buses into showers and toilets on wheels to deliver hygiene and “radical hospitality” among homeless communities in San Francisco and Los Angeles.

## Human Right to Water

**The Issue:** People experiencing homelessness do not have access to “safe, clean, affordable and accessible water adequate for human consumption, cooking and sanitary purposes”, which was declared a human right in California law, in 2013.

**A Possible Model:** The California State Water Resources Control Board provides a Human Right to Water Portal ([https://www.waterboards.ca.gov/water\\_issues/programs/hr2w/](https://www.waterboards.ca.gov/water_issues/programs/hr2w/)), a website for the public to find information about California’s effort to assure that every Californian has access to safe, clean and affordable drinking water. Legislation has been considered that would support this human right for all Californians. Additional work is needed at all levels of government as this California law becomes policy, and practice throughout the state. Homelessness presents significant challenges to enacting this policy.

## Riparian Habitat & Recreational Areas

**The Issue:** Waste from encampments ends up in the waterways, harming fragile habitat, stressing endangered species, and discourages recreation by many users. The risk of cooking and heating fires becoming uncontrolled is considerable.

**A Possible Model:** Russian Riverkeeper (<https://russianriverkeeper.org/>) out of Sonoma County has instituted an innovative program to provide people experiencing homelessness with trash pickup service to help them keep the Russian River clean and build trust with the community.

Page Intentionally Blank

## **OWOW STEERING COMMITTEE MEMORANDUM NO. 2018.6**

**DATE:** January 25, 2018

**TO:** OWOW Steering Committee

**SUBJECT:** Proposition 1 IRWM Round 1 Status and Sacramento Trip

**PREPARED BY:** Mark Norton, Water Resources and Planning Manager

### **RECOMMENDATION**

It is recommended that the OWOW Steering Committee receive and file this information report regarding Proposition 1 Integrated Regional Water Management (IRWM) Round 1 status and outcome from recent visit with Department of Water Resources (DWR) and State Water Resources Control Board (State Board) senior staff in Sacramento on January 22, 2018.

### **DISCUSSION**

At the last OWOW Steering Committee meeting held on November 16, 2017, Carmel Brown, Chief of the Financial Assistance Branch within the Division of Integrated Regional Water Management, spoke with the OWOW Steering Committee and discussed the ongoing efforts to administer the IRWM program and future Proposition 1 outlays for IRWM grant funding. Since her visit, however, there has been no further release of information about the draft Proposition 1 IRWM Implementation Round 1 Project Solicitation Package (PSP) to the Roundtable of Regions, a coalition of IRWM regions across California or to SAWPA Staff. The PSP draft will describe how DWR intends to direct and administer the first of two implementation funding rounds of Proposition 1. For our watershed, the first round is anticipated to approximately \$23,000,000, with possibly an additional amount of up to \$6,300,000 for projects that benefit disadvantaged communities.

On January 22, 2018, SAWPA staff scheduled a meeting with the CA Department of Water Resources senior management to discuss the merits and accomplishments of the SAWPA IRWM Plan known as One Water One Watershed Plan. Information was also being sought from them on the latest schedule for the release of the PSP. SAWPA staff will also visit State Water Resources Control Board Executive Director, Eileen Sobeck, to discuss ongoing coordination efforts of other water planning such as Stormwater Resource Plans and Groundwater Sustainability Plans with IRWM plans.

A staff report about the visit with DWR and SWRCB staff will be provided in the OWOW Steering Committee.