

SAWPA Draft Ordinance No. 8 and Draft Resolution Establishing Local Limits

August 1, 2017

Recommendation to Commission:

- It is recommended that the Commission direct staff to release, for public review and comment, draft Ordinance No. 8 and the Draft Resolution Establishing Local Limits and Best Management Practices Requirements, establishing regulations for the use of the Inland Empire Brine Line and establish a Public Hearing date of September 19, 2017.

Background

- Orange County Sanitation District has completed the process of updating and revising their Sewer Use Ordinance.
- SAWPA is required to update their Ordinance to include the relevant OCSD revisions.

Proposed Ordinance Updates

Issue	Change/Amendment
Permit Terms:	The maximum duration for permits have been lengthened.
Temporary Permits:	New permit type for facilities that have undergone a transfer in ownership.
Letter to Discharge:	New Control Mechanism for one time discharges under 1MG.
Enforcement Response Schedules:	Reporting and response schedules have been defined for mechanisms of compliance.
Permit Transfers:	Ordinance language has been strengthened to prohibit permit transfers.
Wastestream Correction Formula:	Clarification of the formula used to adjust the Local Limits to account for the presence of unregulated wastestreams.

Proposed Local Limit Revisions

Pollutant of Concern	Existing Limit	New/Amended Limit
Biochemical Oxygen Demand	15,000 lb/day	Mass Allocation
Ammonia	-	Mass Allocation
Chromium (Total)	2.0 mg/L	20.0 mg/L
Silver	5.0 mg/L	15.0 mg/L
Molybdenum	-	2.3 mg/L
Selenium	-	3.9 mg/L
1,4-Dioxane	-	1.0 mg/L
Total Toxic Organics	0.58 mg/L	-
Cyanide (Amenable)	1.0 mg/L	-

SAWPA Timetable

Date	Milestone
April 1, 2016	Submittal of Draft 1 to OCSD for review
June 8, 2016	Submittal of Draft 2 to OCSD for review
January 12, 2017	Resolution of TOC discussion
March 31, 2017	Submittal of Draft 3 to OCSD for review
July 11, 2017	Submittal of Draft 4 to OCSD for review
July 25, 2017	Conference Call with OCSD and finalization of Draft Ordinance No. 8 and Reso Establishing Local Limits
August 1, 2017	Release Drafts for Public Review and Comment
August 24, 2017	Workshop with dischargers
September 11, 2017	Request written comments
September 19, 2017	Public Hearing before Commission, possible adoption

Recommendation to Commission:

- It is recommended that the Commission direct staff to release, for public review and comment, draft Ordinance No. 8 and the Draft Resolution Establishing Local Limits and Best Management Practices Requirements, establishing regulations for the use of the Inland Empire Brine Line and establish a Public Hearing date of September 19, 2017.



Questions

Middle Santa Ana River Watershed Pathogen TMDL Task Force

Update / Task Force Agreement, Amendment No. 1

Rick Whetsel

SAWPA Commission

August 1, 2017



Critical Success Factors

- SAWPA has a strong reputation as a watershed-wide, knowledgeable, neutral and trusted facilitator, leader, and administrator of contracted activities.
- Goals, scope, costs, resources, timelines, and the contract term are approved by the Commission before executing an agreement to participate in a roundtable group.
- Clear upfront criteria and terms for completing or transitioning efforts that have been successfully established or completed.
- Adequate professional staff and resources to effectively provide facilitation, management, administrative and technical support to collaborative work efforts.



SAWPA's Role

- SAWPA staff serves as administrator and is reimbursed for its time expended by Task Force participants.
 - Organizing and facilitating Task Force meetings
 - Secretarial, clerical, and administrative services
 - Oversee Task Force Agreement
 - Prepare annual budgets, invoices
 - Manage and report on stakeholder funds
 - Act as contracting party and contract administrator
 - Explore grant funding opportunities
 - Coordinate with other agencies
 - Communicate with Regional Board



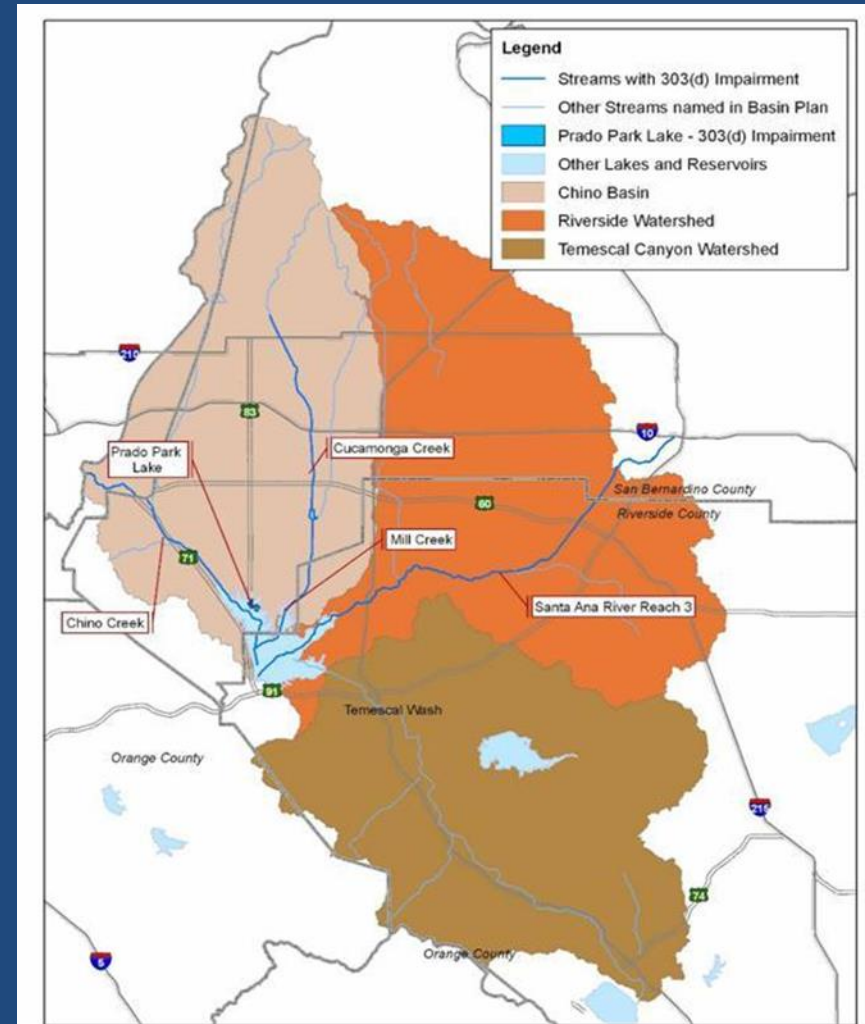
MSAR TMDL

- February 2005, Basin Plan amended to Include Bacterial Indicator TMDLs for Middle Santa Ana River Waterbodies .

- Santa Ana River, Reach 3
- Chino Creek, Reaches 1 and 2
- Cucamonga Creek, Reach 1
- Mill Creek (Prado Area)
- Prado Park Lake

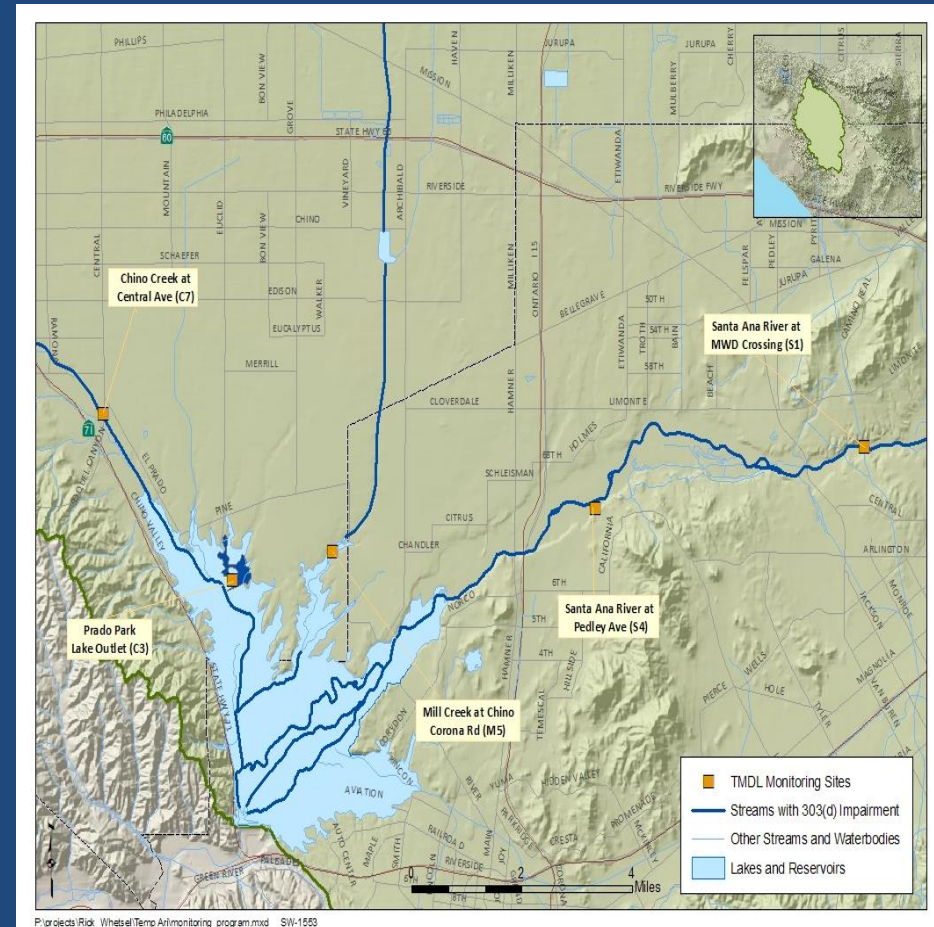
- Key Compliance Dates

- December 31, 2015 - compliance with Dry Season TMDLs, wasteload allocations and load allocations
- December 31, 2025 - compliance with Wet Season TMDLs, wasteload allocations and load allocations



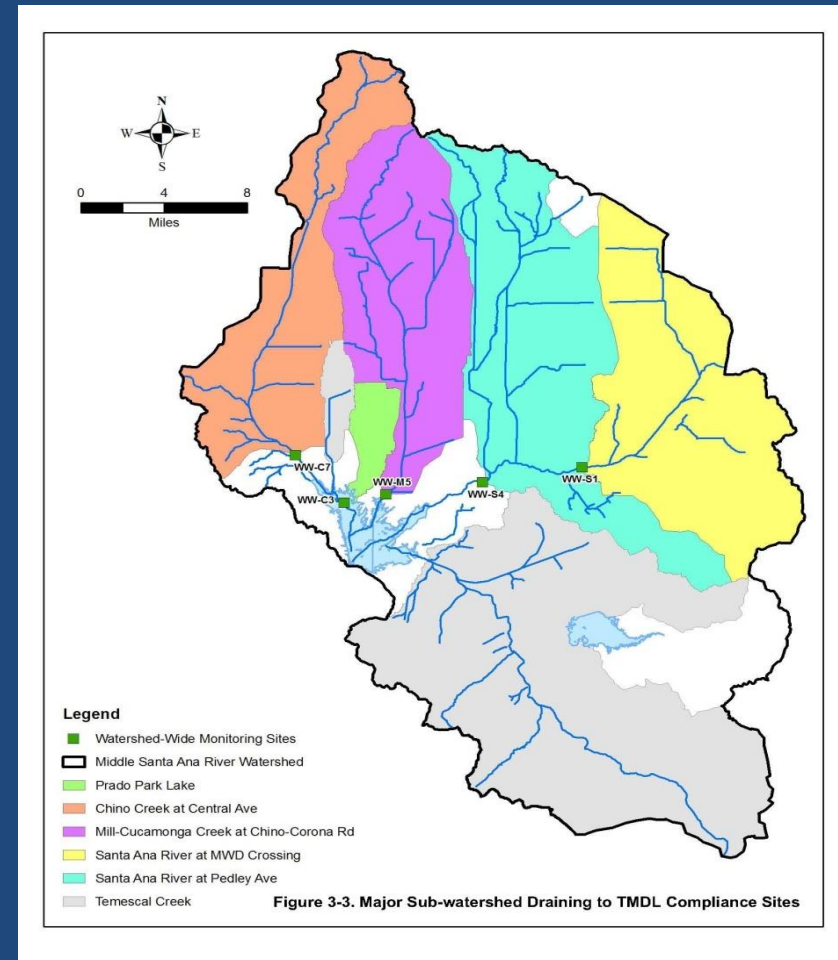
Conduct TMDL Compliance Monitoring Program

- Watershed-Wide Monitoring Program to measure compliance with numeric TMDL targets
- Five comprehensive monitoring sites
- Dry and Wet season monitoring
- Protect REC-1 beneficial use
- Conducted as part of the SAR Bacteria Monitoring program



Support Implementation of Comprehensive Bacteria Reduction Plans

- February 2012 Regional Board adopted Comprehensive Bacteria Reduction Plans (CBRP) for Riverside and San Bernardino Counties
- Plans designed to achieve compliance with dry weather wasteload allocations for bacterial indicators established by the TMDL.
- Requires dischargers source evaluation of and implementation of BMPs



Prepare 2016 Triennial Report

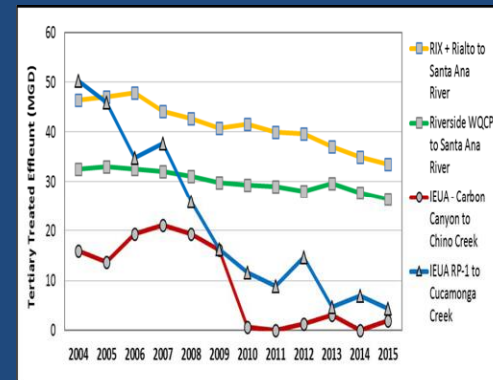
- Implementation Activities (2013 – 2015)

- Tier 2 Source Evaluations (watershed-wide)
- Residential Property Scale Bacteria Water Quality Study (Chino and Chino Hills)
- Uncontrollable Bacteria Sources Study (Riverside County)
- Arlington Greenbelt Sampling (City of Riverside)



- Water Quality program Summary (2012-2015)

- Dry Season (May – Oct)
- Wet Season (Dec – Mar)
- Rainfall Records
- Flow Measurements



Next Steps

- Uncontrollable natural sources from controllable anthropogenic sources of bacteria.
- Controllable agricultural sources from controllable urban sources of bacteria.
- Update 2012 Comprehensive Bacteria Reduction Plans (CBRP).
- Integrate proposed bacteria water quality standards by SWRCB.
- 2018 303(d) listings.
- Prepare formal compliance/attainment status report.

In addition, may need to perform the following

- Develop site-specific bacteria objectives for Limited REC-1 beneficial use.
- Conduct additional Use Attainability Analyses (UAA) to de-designate or re-designate some stormwater channels presently designed REC-1 (primary contact recreation).
- Conduct technical studies required to support Condition Variances.
- Proposed monitoring requirements for Antibiotic Resistant Bacteria currently under development by the SWRCB's Blue Ribbon Panel (administered by SCCWRP).
- Revise and update the TMDL



Recommendation

- SAWPA staff on behalf of stakeholders of the Middle Santa Ana River (MSAR) Total Maximum Daily Load (TMDL) Task Force recommends that the SAWPA Commission approve Amendment No. 1 to the Middle Santa Ana River Watershed Total Maximum Daily Load (TMDL) Task Force Agreement effectively extending the existing Task Force for five additional years through December 2022.



Questions?

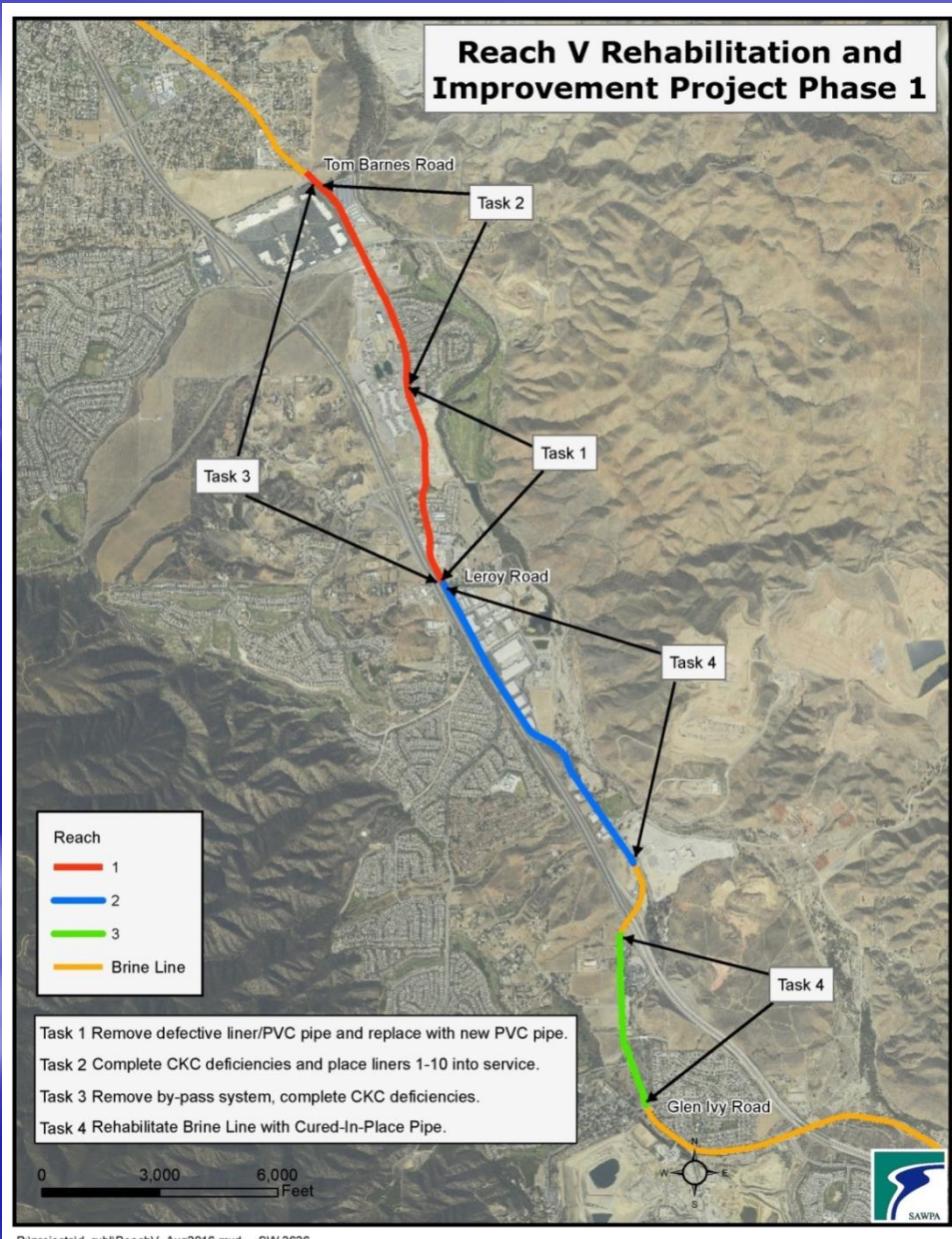


Inland Empire Brine Line
Reach V Rehabilitation and
Improvement Project – Phase 1

Item 5.C.
August 1, 2017

Recommendation

- Authorize the Interim GM to execute Change Order No. 5 with Weka Inc. in an amount not to exceed \$71,605.33 for the Inland Empire Brine Line Reach V Rehabilitation and Improvement Project – Phase 1 (Task 1, 2 and 3).



14-inch Lateral Installation



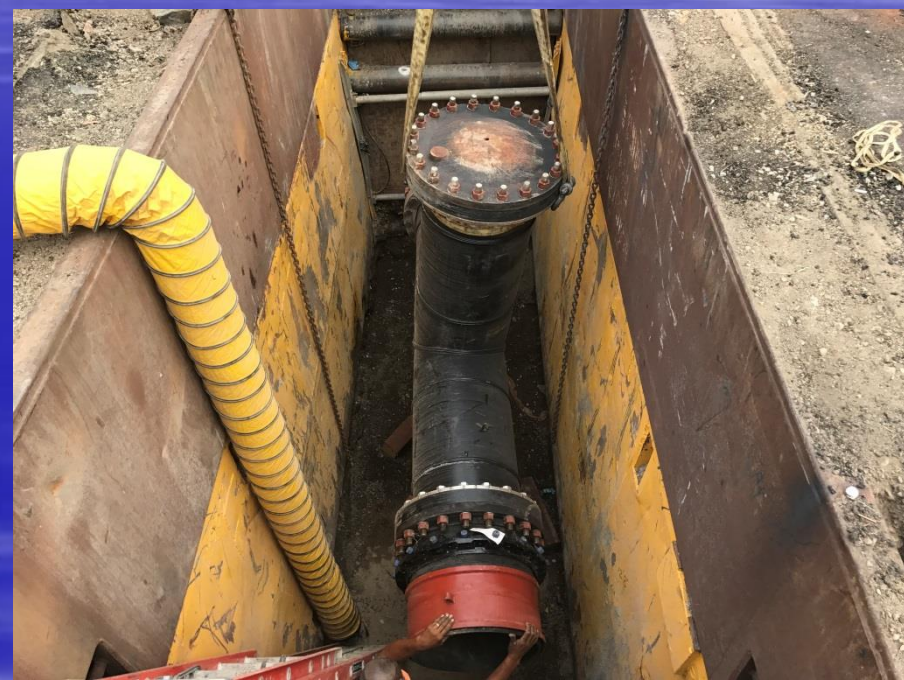
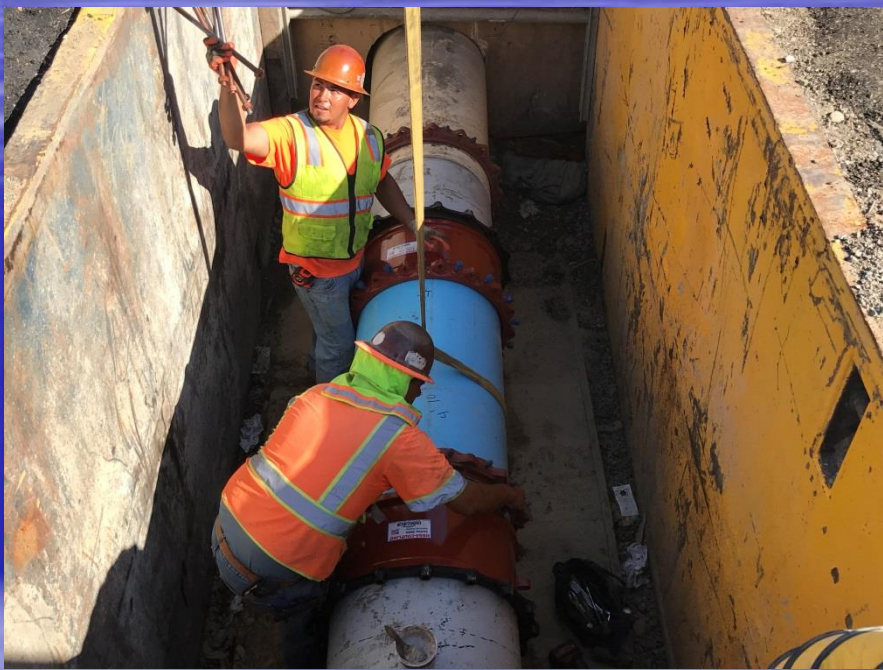
Final Paving Sections 1 - 10

Segment Summary



Segment #	CIPP	Pressure Test	Labs
Reach 2			
1.	Lined	✓	✓
2.	Lined	✓	✓
3.	Lined	✓	✓
4.	Lined	✓	✓
5.	No Lining	N/A	N/A
6.	Lined	✓	✓
7.	Lined	✓	Pending
8.	Lined	Pending	Pending
9.	Lined	Pending	Pending
9.1	Complete Remove and Replace 70 ft		
10.	8/1		
11.	8/7		
12.	8/10		
15.	Lined	✓	Pending
16.	Complete Remove and Replace 395 ft		





Inland Empire Brine Line Reach V Rehabilitation and Improvement Project

Reaches 2 and 3



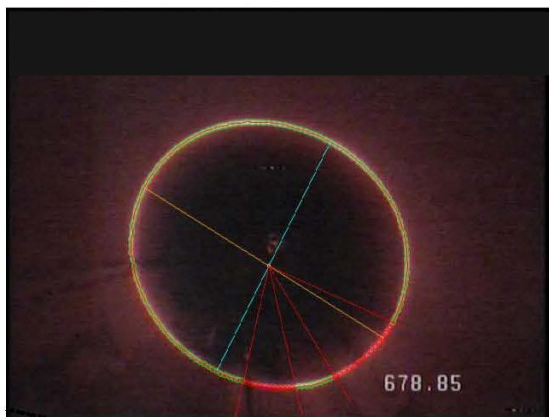
Ovality Results

- 24. Sta. 400+54 – 397+00
 - Range 0.6% - 7% / CIPP Line
- 25. Sta. 397+00 – 392+54
 - Range 1.4% - 10.6% / CIPP Line
 - One location two ft in length up to 10.6% Ovality
- 26. Sta. 392+54 - 386+00
 - Range 1.1% - 8.5% / CIPP Line

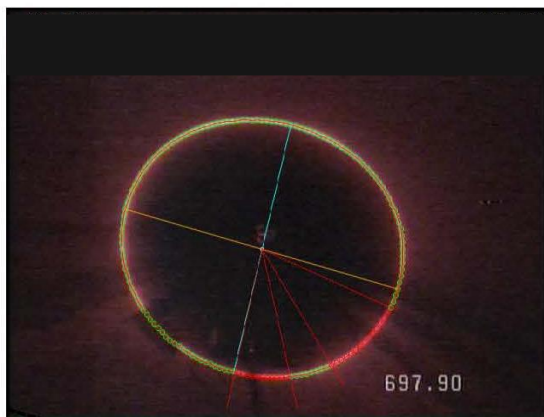
Recommendation

- Authorize the Interim GM to execute Change Order No. 5 with Weka Inc. in an amount not to exceed \$71,605.33 for the Inland Empire Brine Line Reach V Rehabilitation and Improvement Project – Phase 1 (Task 1, 2 and 3).

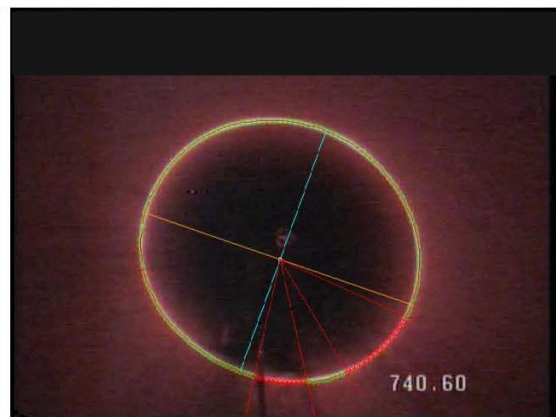
Questions?



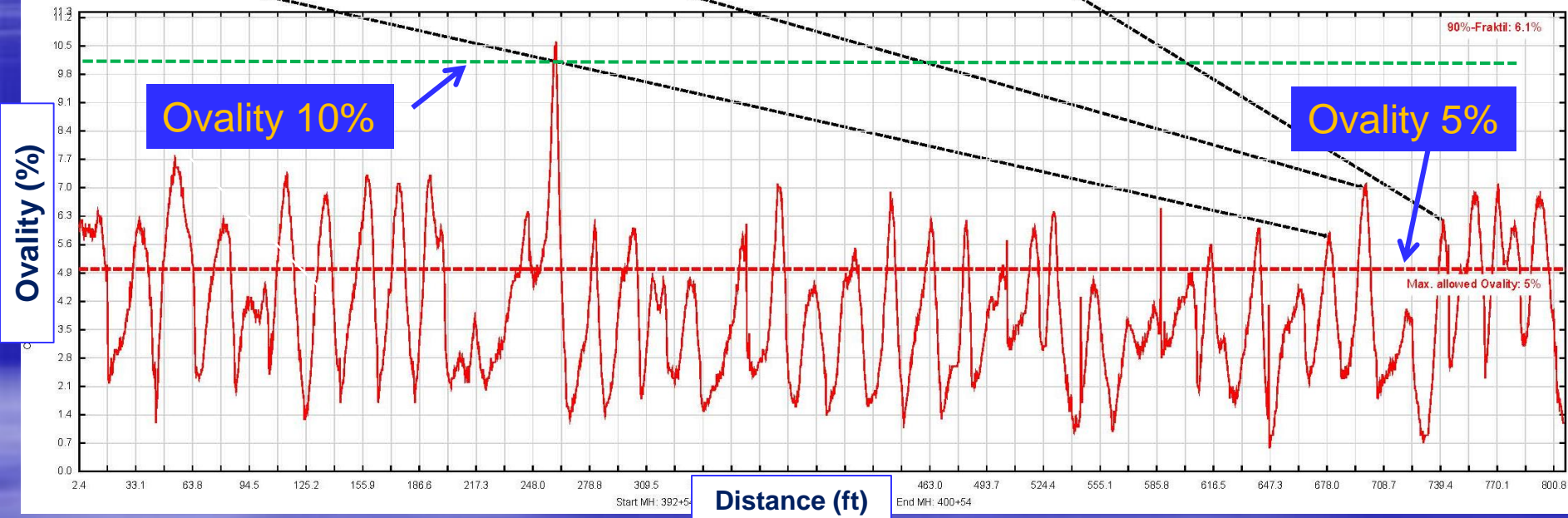
Distance: 678.894', Ovality: 5.8%



Distance: 697.923', Ovality: 7%



Distance: 740.578', Ovality: 6.2%



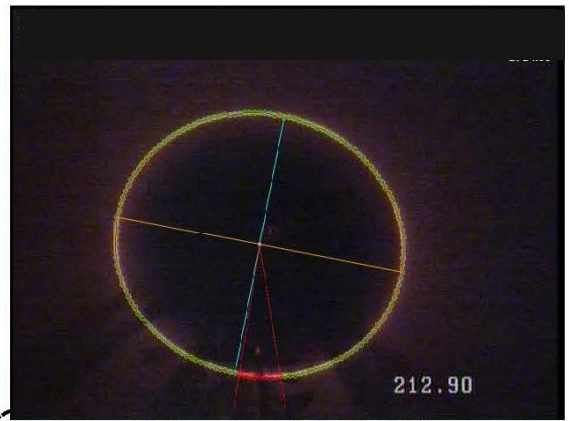
- 24 and 25. Sta. 392+54 – 400+54
 - Range 0.6% - 10.6% / CIPP Line
 - 1 two foot segment greater than 10%



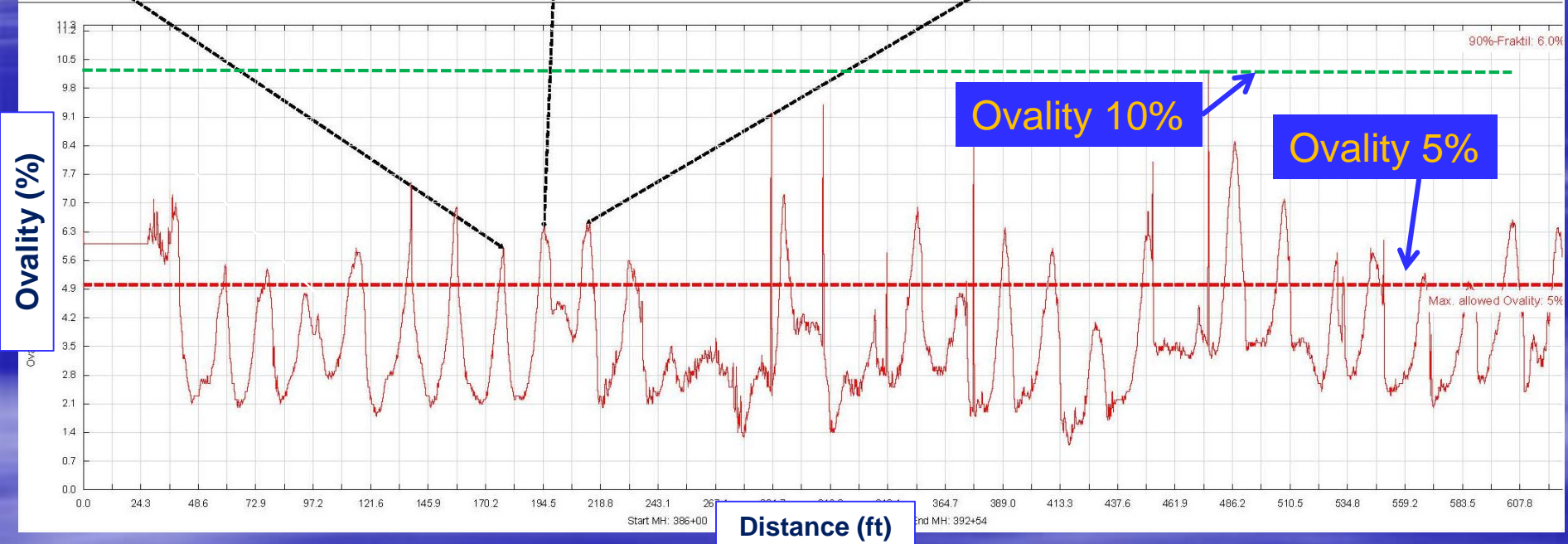
Distance: 177.818', Ovality: 5.9%



Distance: 194.879', Ovality: 6.4%



Distance: 212.923', Ovality: 6.5%



- 26. Sta. 392+54 – 386+00
 - Range 1.1% - 8.5% / CIPP Line

Ovality Results

<u>Segment #</u>	<u>Length</u>	<u>Ovality Range</u>	<u>Action</u>
Reach 2			
▪ 1.	500 ft	2.5% - 9.5%	CIPP Line
▪ 2.	450 ft	2.3% - 9.4%	CIPP Line
▪ 3.	550 ft	1.3% - 11.5%	CIPP Line
▪ 4.	350 ft	1.5% - 8.0%	CIPP Line
▪ 5.	350 ft	1.4% - 3.9%	No Lining
▪ 6.	400 ft	1.3% - 9.0%	CIPP Line
▪ 7.	350 ft	1.0% - 7.5%	CIPP Line
▪ 8.	410 ft	1.5% - 10.4%	CIPP Line
▪ 9.	410 ft	1.6% - 10.0%	CIPP Line
▪ 9.1	70 ft	6.0% - 16.5%	Remove and Replace
▪ 10.	220 ft	1.6% - 7.7%	CIPP Line
▪ 11.	270 ft	0.7% - 9.0%	CIPP Line
▪ 12.	440 ft	0.7% - 9.0%	CIPP Line
▪ 13.	240 ft	1.5% - 12.0%	CIPP Line
▪ 14.	460 ft	4.0% - 18.0%	CIPP Line (Increased wall thickness at 18% Ovality, 9ft)

Ovality Results

	<u>Segment #</u>	<u>Length</u>	<u>Ovality Range</u>	<u>Action</u>
	▪ 15.	405 ft	3.6% - 13.5%	CIPP Line
	▪ 16.	395 ft	3.3% - 16.1%	Remove and Replace
	▪ 17.	400 ft	2.9% - 11.2%	CIPP Line
	▪ 18.	350 ft	3.2% - 12.4%	CIPP Line
	▪ 19.	350 ft	1.4% - 12.0%	CIPP Line
	▪ 20.	510 ft	1.0% - 8.0%	CIPP Line
	▪ 21.	270 ft	2.2% - 8.0%	CIPP Line
	▪ 22.	470 ft	0.6% - 7.0%	CIPP Line
	▪ 23.	225 ft	1.2% - 7.8%	CIPP Line
Reach 3	▪ 24.	354 ft	0.6% - 7.0%	CIPP Line
	▪ 25.	446 ft	1.4% - 10.6%	CIPP Line
	▪ 26.	654 ft	1.1% - 8.5%	CIPP Line
	▪ 27.	400 ft	0.4% - 10.2%	CIPP Line
	▪ 28.	350 ft	0.4% - 10.2%	CIPP Line
	▪ 29.	660 ft	0.5% - 8.5%	CIPP Line

3 Segments Remaining



Water Energy Community Action Network

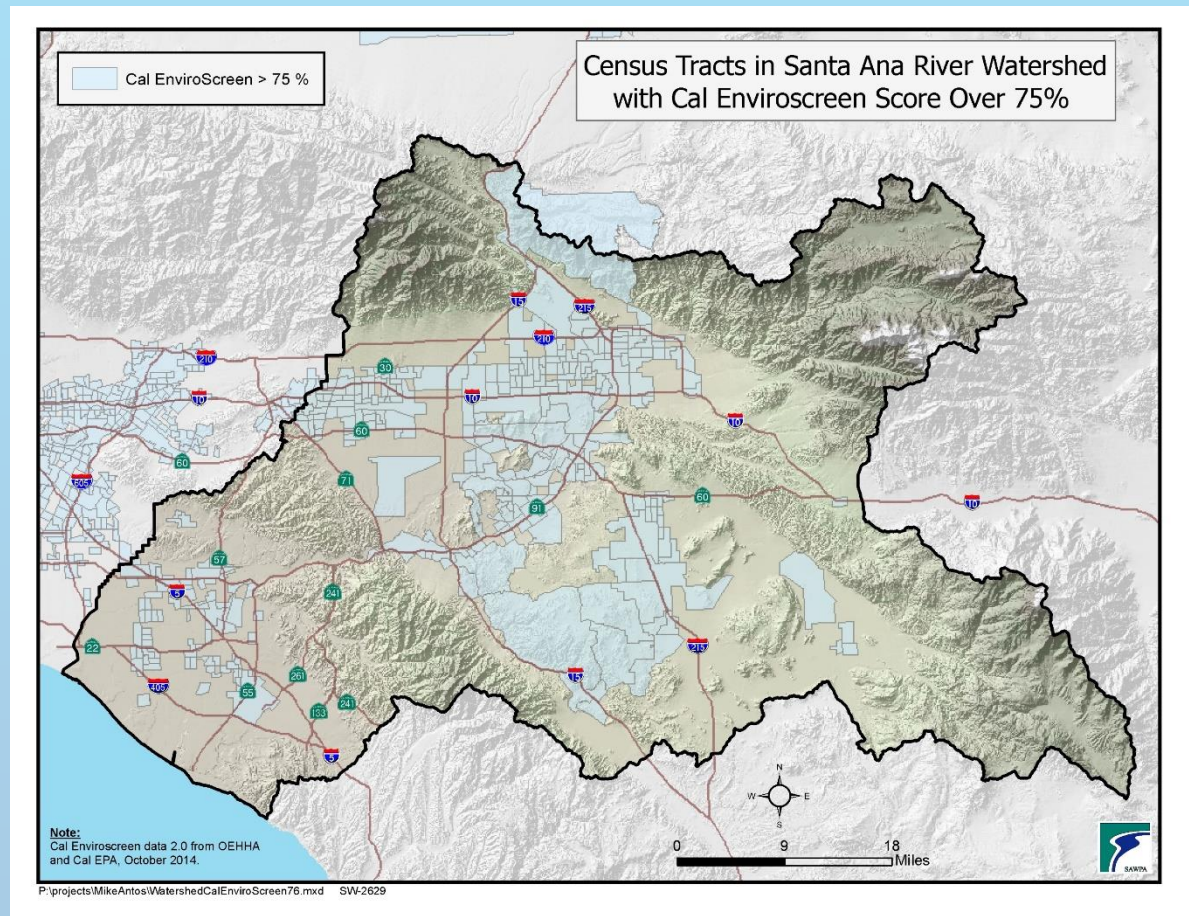
Mike Antos, Ph.D.
Senior Watershed Manager

SAWPA Commission Meeting
July 18, 2017



OWOW Business Line - Critical Success Factors

Distribution of benefits across the watershed fairly and equitably.



Roundtable Business Line - Critical Success Factors

SAWPA's
reputation as
a trusted
leader and
administrator.



WECAN Background

- Funding via Water-Energy Nexus grant from DWR, matched by local dollars from retail water supply partners
- For disadvantaged communities, providing:
 - Indoor fixture retrofits to save water and energy
 - Outdoor front-yard turf replacement
 - Training on landscape maintenance



Our team

- Five funding partners
- Three CAPs
- Three consultants



PUBLIC UTILITIES



ORANGE COUNTY
COASTKEEPER®



EcoTech Services, Inc.



SAWPA



WE CAN

Achievements

Fixture	No. Installed	Perc. Total
HE Toilets	89	52%
Low-flow showerheads	91	25%
Thermostatic Shower Valves	93	23%
Faucet Aerators	141	46%
HE Hot Water Heaters	20	5%
Hot Water Heater Blankets	45	82%

Turf Partner	Sq. Ft. Removed	Perc. Total
Anaheim PU	19,105	59%
Fontana WC	6,170	9%
Jurupa CSD	74,190	79%
West Valley WD	22,930	42%



Achievements



Achievements



Achievements



Other successes



Helping Local Communities Conserve: The Water-Energy Community Action Network

Governor's Office of Planning and Research
Best Practice Pilot Program

Arya Moalemi, CivicSpark Fellow
Mike Antos, Watershed Manager
Santa Ana Watershed Project Authority, CivicSpark Sponsor



August 2016



https://www.opr.ca.gov/s_bestpractices.php



Other successes

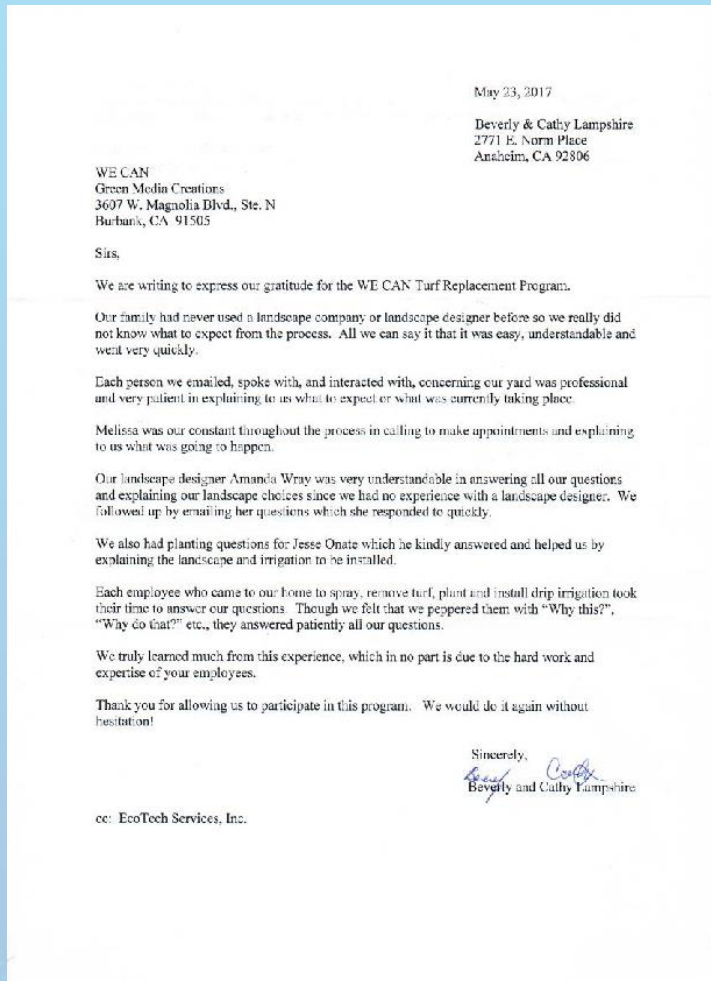


- WaterSmart grant
- 50/50 split funding
- 120,000 sq. ft. turf removal
- \$730,000 augmentation to MOU with SAWPA



Other successes

Kudos!



“Thank you for allowing us to participate in this program. We would do it again without hesitation!”

“We truly learned much from this experience, which in no [small] part is due to the hard work and expertise of your employees.”



State of WECAN



Grant admin and program on budget



Following extension granted by DWR,
on-schedule for Dec 2018 completion.

Staff recommends:

- That the Commission receive and file this informational report.