

Brine Line Service Contracts FY17-18

SAWPA Commission

Item 5.A

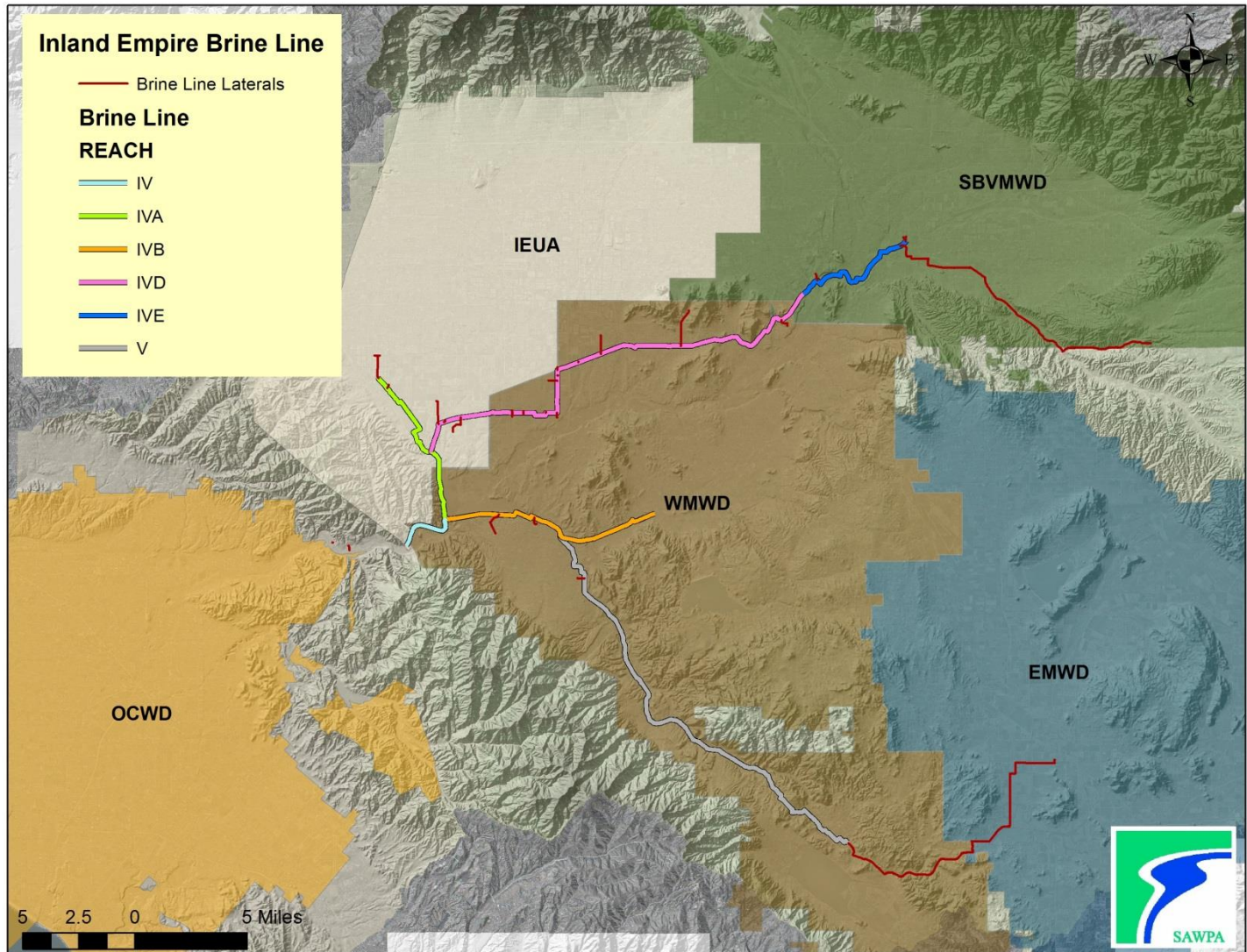
June 6, 2017

Brine Line Service Contracts

Recommendation to Commission:

- That the Commission approve Work Orders with E.S. Babcock Laboratories in the amount of \$87,578 for water quality sampling and analysis services and Western Municipal Water District in the amount of \$90,000 for Brine Line sampling support.

Inland Empire Brine Line



Brine Line Service Contracts

Service Provider	Scope of Work	Amount
WMWD	Water Quality Sampling	\$90,000
E.S. Babcock Laboratories	3,150 sample analysis	\$87,578

Brine Line Service Contracts

Recommendation to Commission:.

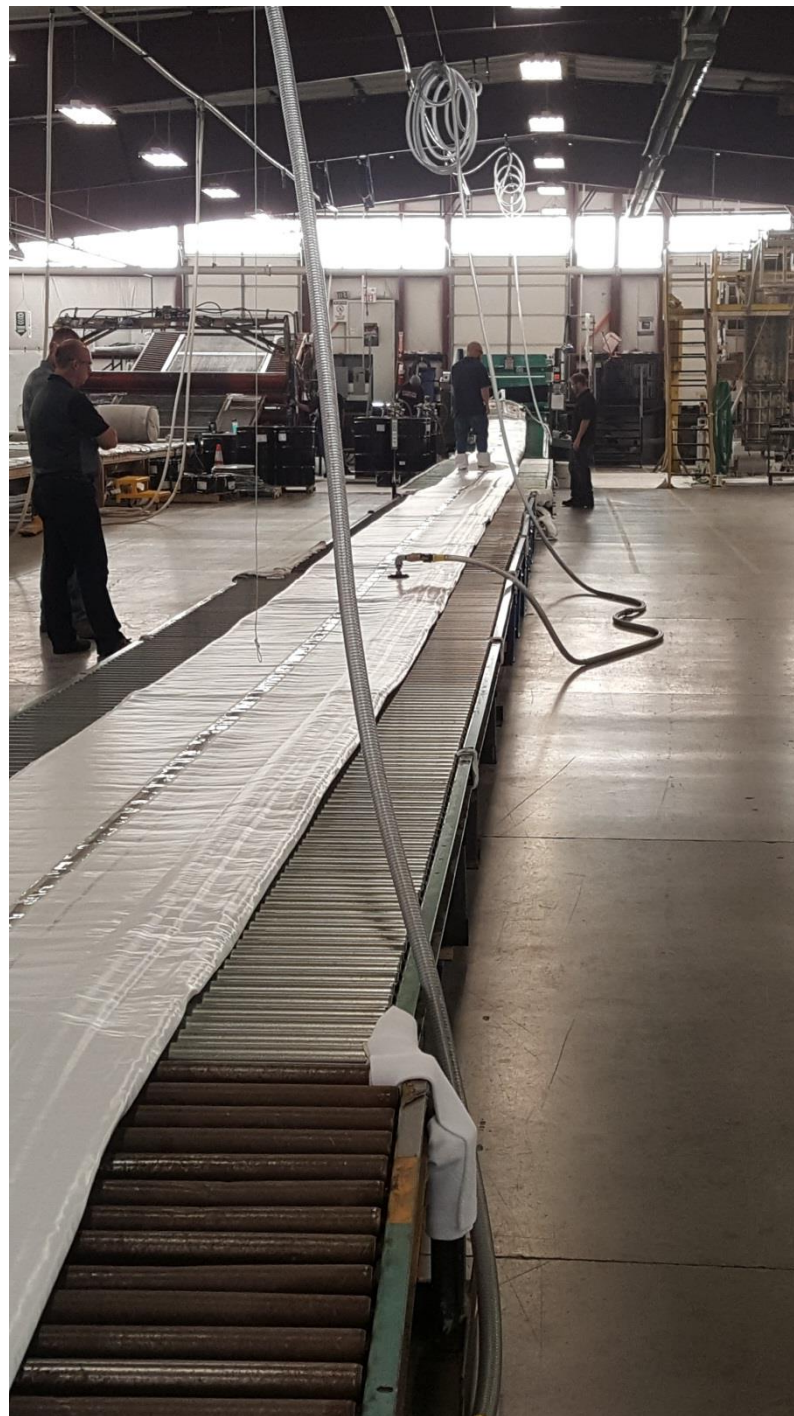
- That the Commission approve Work Orders with E.S. Babcock Laboratories in the amount of \$87,578 for water quality sampling and analysis services and Western Municipal Water District in the amount of \$90,000 for Brine Line sampling support.

QUESTIONS?

Service Provider	Description	Amount (\$)
Douglas Environmental	Flow Meter Calibration	12,000
HazMat Trans	Debris Hauling and Disposal Line Draining and Emergency Response	35,000 93,000*
Houston and Harris	Pipeline Inspection (CCTV) Pipeline Cleaning	28,000* 269,000*
IEUA	Reach 4A Maintenance	10,000
Innerline Engineering	Pipeline Cleaning	39,000*
Nature's Image	Right-of-way maintenance	17,500*
TKE	Engineering	23,750*

*Budget remaining from previously issued Task Order, carries over to next FY

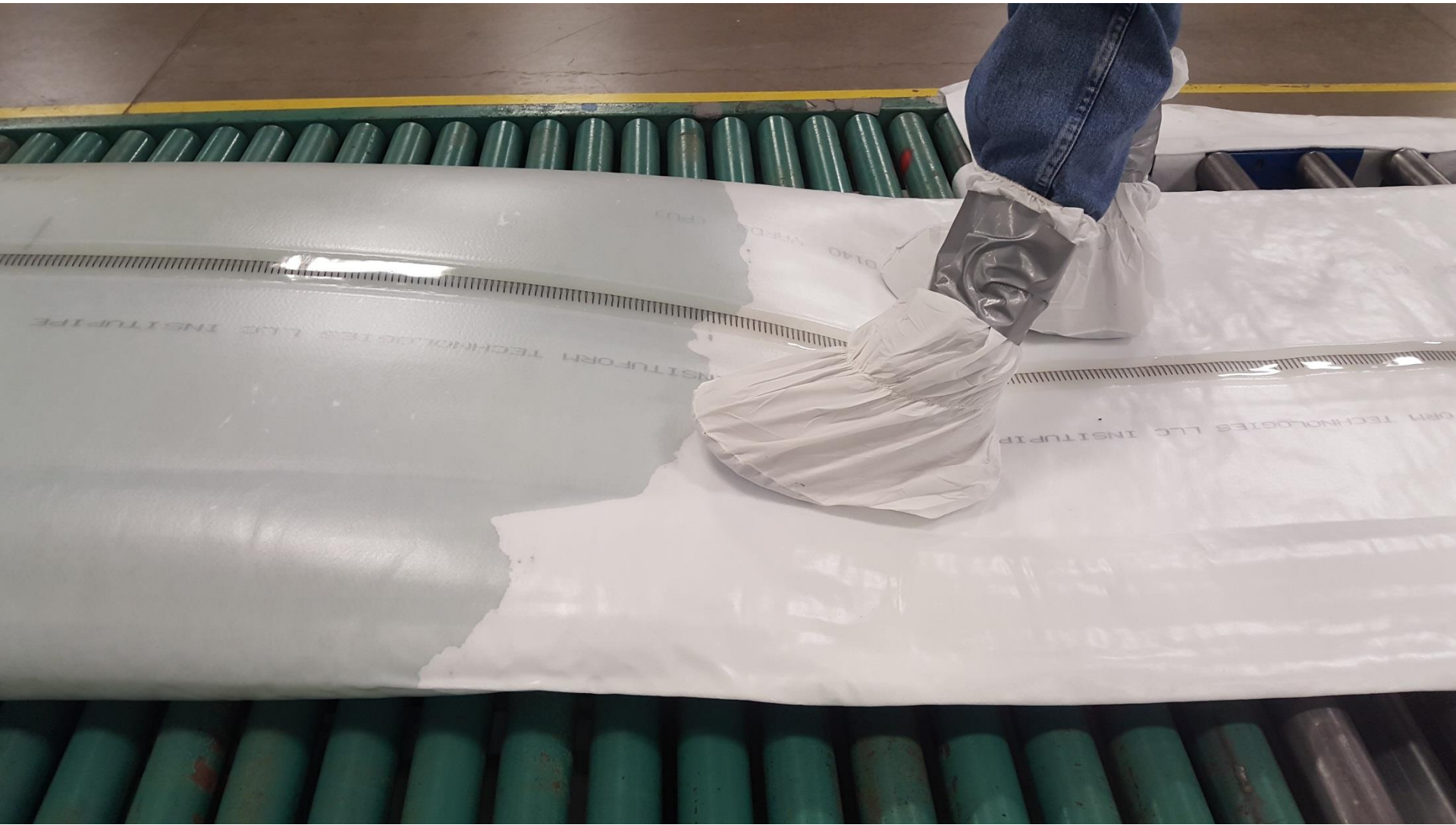
Service Provider	Description	Amount (\$)
A Cone Zone	Traffic Control	1,000
Air Gas	Compressed Gas – Safety	1,000
K&H Metals	Miscellaneous Supplies – Tools	2,000
Republic Services	Tipping Fees	10,000
Trench Shoring	Steel Plates, Shoring	2,000
Tripac Marketing	Bolts, Gaskets	2,500
United Storm Water	Dewatering Bins	10,000
Riverside County	Fuel	12,000
Riverside Transmission Center	Vehicle Repair	3,500















THE WASHINGTON POST
2000 M ST NW
WASHINGTON, DC 20036
TEL: 202 336 6000
FAX: 202 336 6001
WWW.WASHINGTONPOST.COM

1.500.888.1111
Pallet Services
10000 1st Ave SE
Bellevue, WA 98003
TEL: 206.467.7100

FRAGILE
HANDLE WITH CARE
NO PALLET JACKS
OR FORK LIFTS

10000 1st Ave SE
Bellevue, WA 98003
TEL: 206.467.7100

10000 1st Ave SE
Bellevue, WA 98003
TEL: 206.467.7100

10000 1st Ave SE
Bellevue, WA 98003
TEL: 206.467.7100

10000 1st Ave SE
Bellevue, WA 98003
TEL: 206.467.7100

16.5 mm
I.M.M.P.





6/6/17 7:17:48 AM PDT



704 20032 3407.2
24x 11.5

447

3007





6/6/17 8:22:49 AM PDT