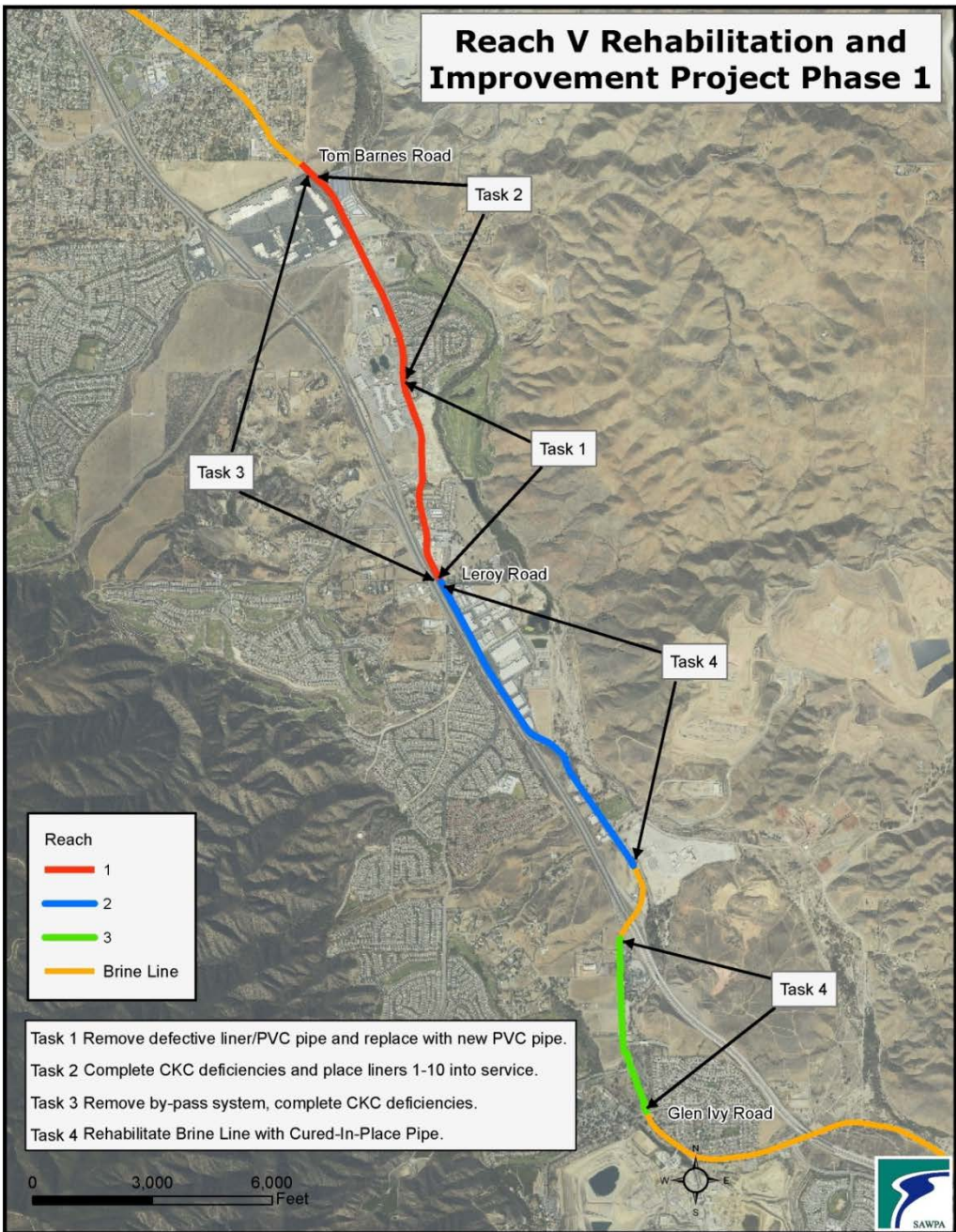


Inland Empire Brine Line  
Reach V Rehabilitation and  
Improvement Project – Phase 1

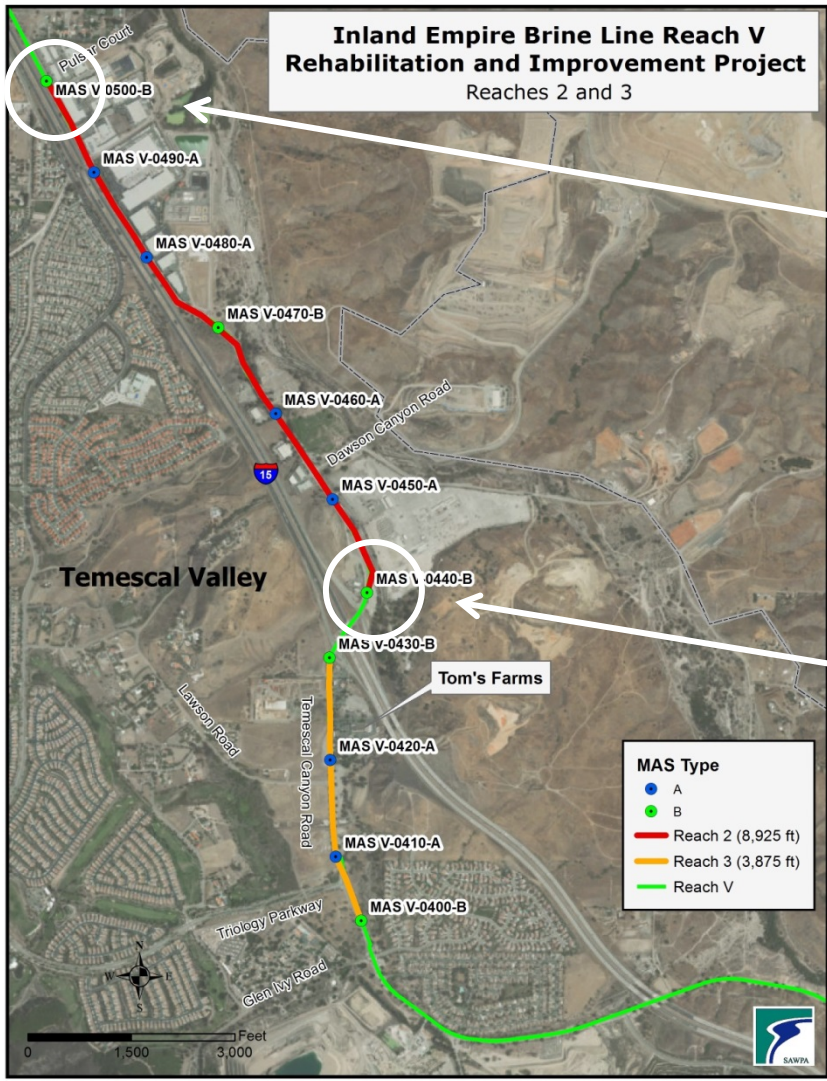
Item 6.A

March 21, 2017

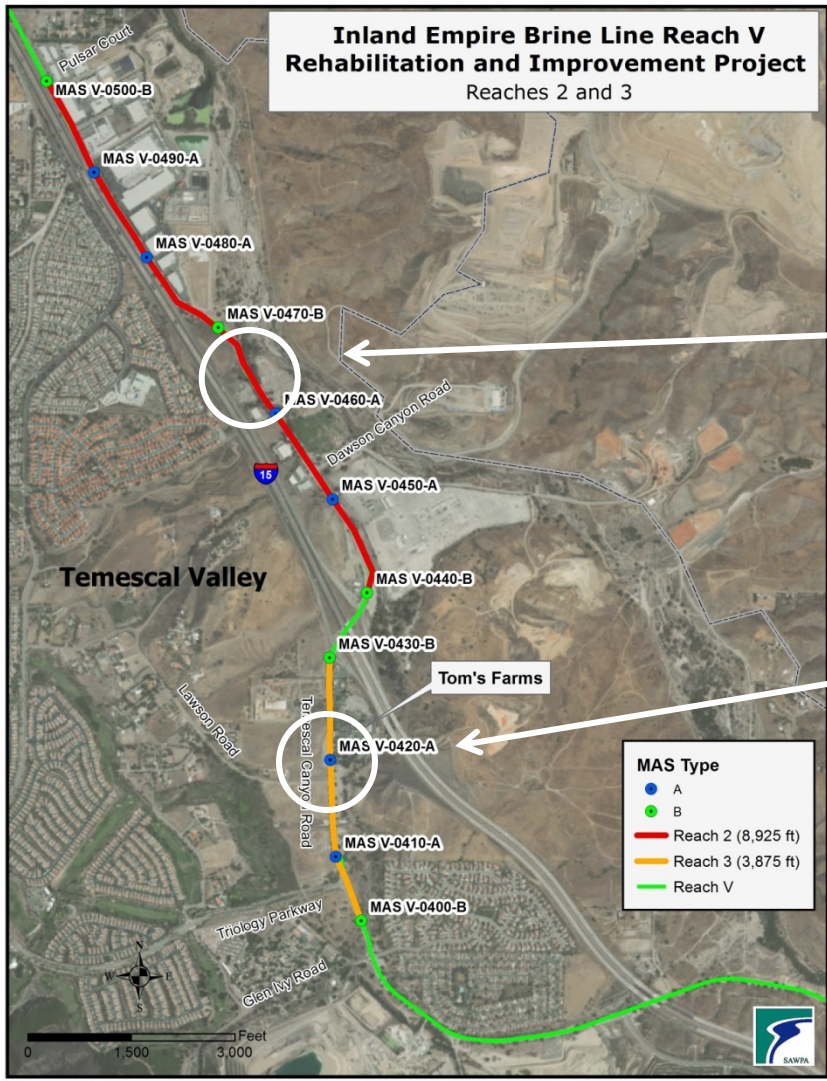
# Reach V Rehabilitation and Improvement Project Phase 1



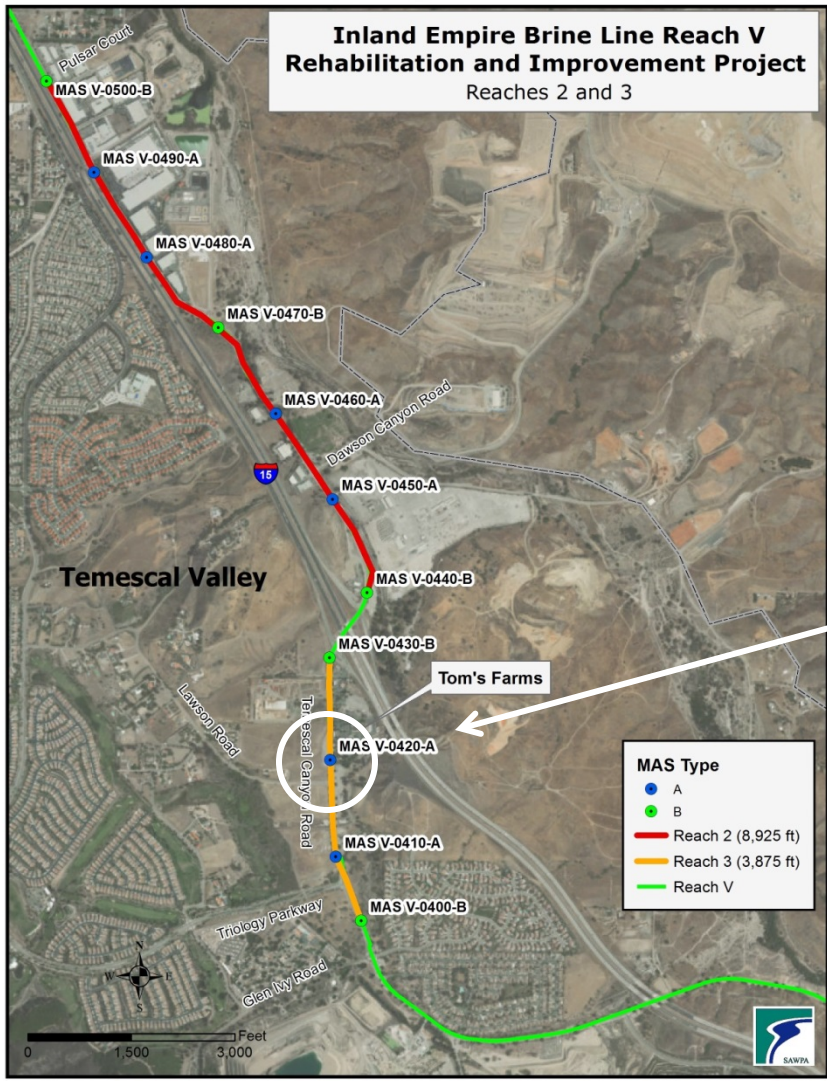




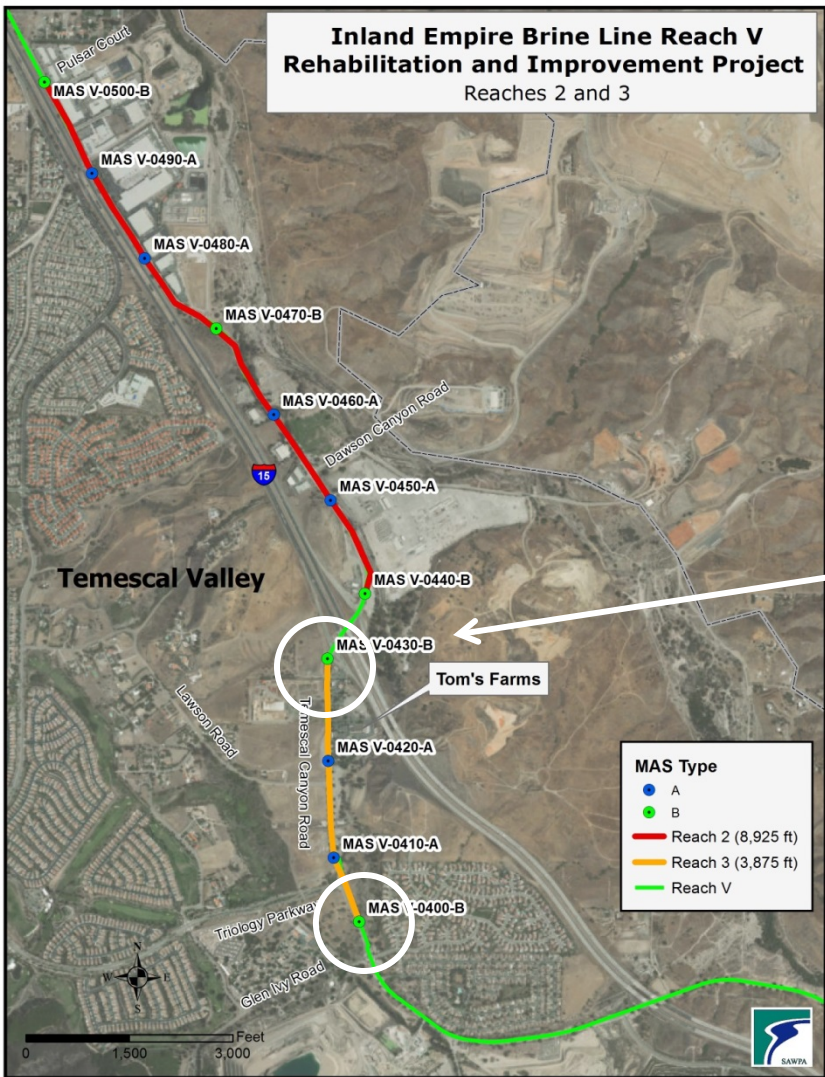




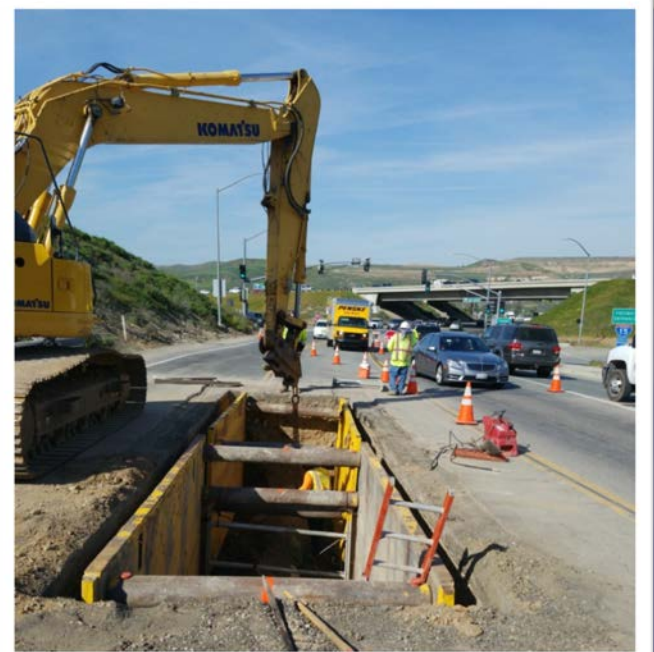








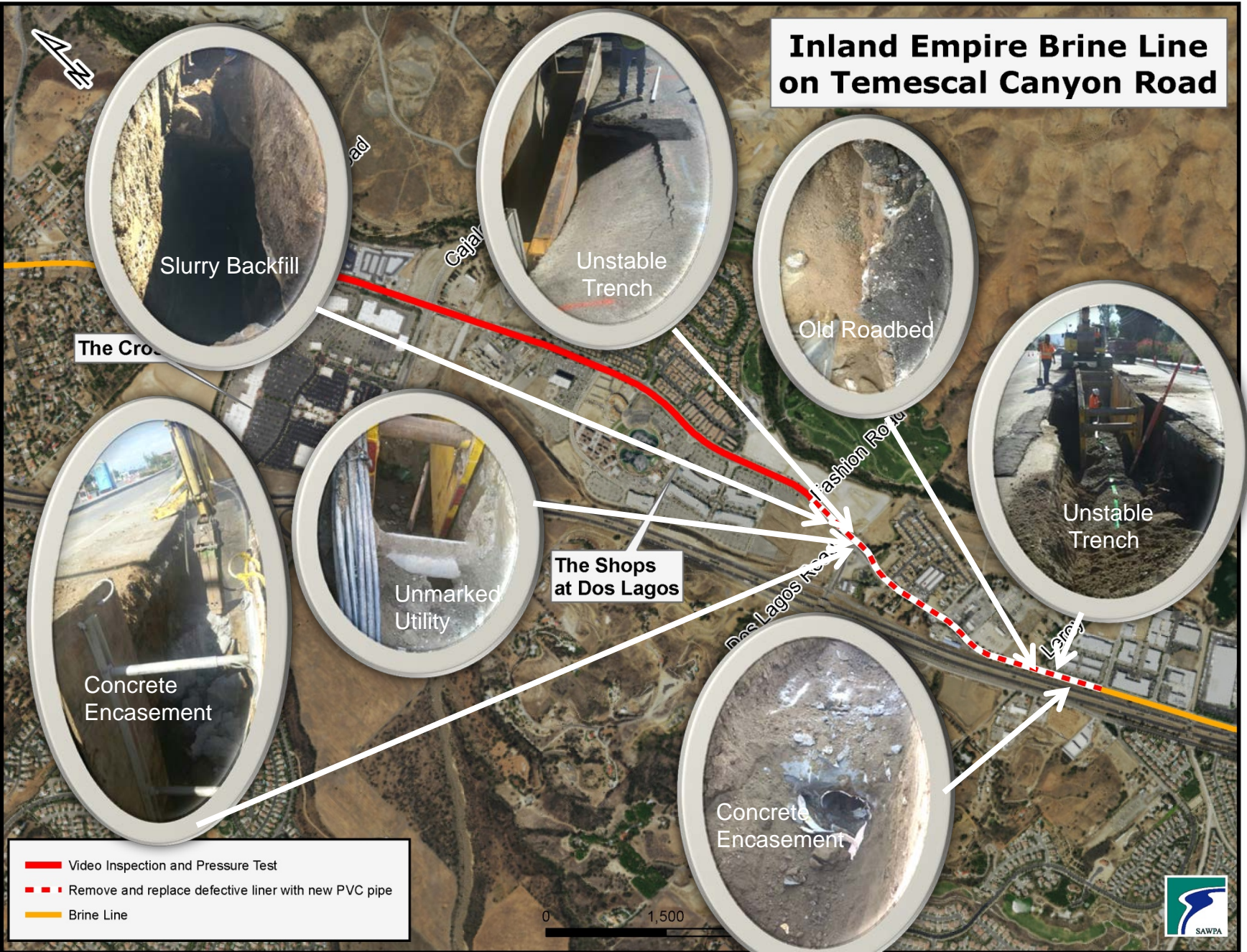
P:\projects\id\_ruh\RchVByPass\Reach2and3ByPass.mxd SW-2663



Questions?



# Inland Empire Brine Line on Temescal Canyon Road





# Public Outreach

- Project Update Brochures
- Construction Hotline
- Construction E-mail address
- Posting to We R Temescal Valley Facebook Page
- Project Website



**SAWPA**

**INLAND EMPIRE BRINELINE**

## PIPELINE PROJECT UPDATE

► **WHAT'S NEW AND WHY**

The contractor upgrading the Brine Line, WEKA Inc. of Highland, CA, is operating work crews at full staffing, maximizing production and efficiency on the project. In addition, repaving a segment of Temescal Canyon Road in Corona is scheduled to start on Friday, 11/4, and continue into early next week.

► **WHAT IT MEANS TO YOU**

WEKA will replace the temporary asphalt on Temescal Canyon Road near Fashion Drive – restoring a smooth driving surface on a portion of the roadway disturbed by work on the Brine Line. Final resurfacing will follow later. Generally, construction may slow traffic between Tom Barnes Street and Leroy Drive, 9 AM to 5 PM.

► **PROCESS AND TIMELINE**

The project remains fast tracked, reducing inconvenience while ensuring high-caliber work on the pipeline. The upgrades in Corona may be finished as soon as the end of November, with other areas in Phase 1 completed in early 2017. Write to us at [construction@sawpa.org](mailto:construction@sawpa.org).

**Project Overview**

SAWPA is working to test, fortify and/or replace 5 miles of the Brine Line, an underground pipeline that conveys salty water from the Inland Empire to the Pacific Ocean. The brackish water comes from key sectors of the Inland economy, including power plants, manufacturers, and groundwater desalters that produce large volumes of drinking water.

The project calls for placing new pipes within older pipes which have lost their shape over time. With loss of shape comes increased risk of spills, and the upgrades follow a 2011 Brine Line leak that was remediated. Water from the Brine Line poses no health risk but, if left untreated, could damage the local environment.

Santa Ana Watershed Project Authority  
Inland Empire Brine Line  
11615 Sterling Avenue  
Riverside, CA 92503

Tell us what you think.  
Hotline: 951.354.4250  
Email: [construction@sawpa.org](mailto:construction@sawpa.org)  
For updates: [www.sawpa.org/brineline](http://www.sawpa.org/brineline)



Inland Empire Brine Line  
Lease of Warehouse Space

Item 6C.



# Recommendation

Authorize GM to sign a 3-year lease agreement for warehouse/shop space

- 1,800 sf
- \$1,476/month or \$17,712/year  
( \$53,136 for 3 year lease)



# Uses

- Storage – tools, equipment, materials, plugs, repair clamps, MAS frame and cover, valves, sampling equipment, sample bottles, tubing, etc.
- Storage – paper files now in long term storage  
(Large bulk items remain at WMWD – spare pipe)
- Shop – refurbish Air Release/Vacuum Relief Valves
- Shop – wash samplers, dry, recharge batteries
- Office – small area to store O&M information (dwgs, manuals), perform minor computer activities (3 field staff)

# Details

- 1,800 sf open bay, restroom, office, reception
- Approx 30' x 60', 14' clearance, roll-up door
- Fire sprinklers
- Lease rate \$0.82/sf/month or \$1,476/mo
- 5 vehicle parking spaces

## Lease Terms

- Owner pays water/sewer/trash
- SAWPA pays elec/phone/internet/security/alarm
- Lease terms – property owner maintains building systems (fire alarm, fire sprinkler, roof), SAWPA maintains space specific improvements





2017.03.14 15:30





SHIP TO  
↑  
CARTON BY  
CARTON

2017.03.14 15:32



# Recommendation

Authorize GM to sign a 3-year lease agreement for warehouse/shop space

- 1,800 sf
- \$1,476/month or \$17,712/year  
( \$53,136 for 3 year lease)

**CONNECTING THE DROPS**

A graphic featuring blue pipes and a large blue water drop. The pipes are arranged in a network, with a horizontal pipe crossing a vertical pipe. The water drop is positioned on the right side of the horizontal pipe. The background is a green gradient with circular patterns.

# La Sierra Pipeline Project

Craig Miller, Deputy General Manager, WMWD

March 21, 2017

**LA SIERRA  
PIPELINE  
EXPANSION**





- PLAY VIDEO



# Why This Project is Important:

- Reduces dependence on imported water
- Increases local water supply
- Improves flexibility in emergencies
- Provides flexibility to agencies in Western's service area





A decorative graphic at the top of the slide consisting of a horizontal blue pipe with a T-junction in the center and an elbow on the right side.

# Integrates 3 Water Supply Projects

- Maximizes the use of two existing groundwater recovery projects to produce up to 7,000 AF
  - Chino Desalter
  - Arlington Desalter
- La Sierra Pipeline interconnects distribution system
  - Western retail
  - Western wholesale
  - Imported water service to Jurupa Community Services District is possible



# About the Project

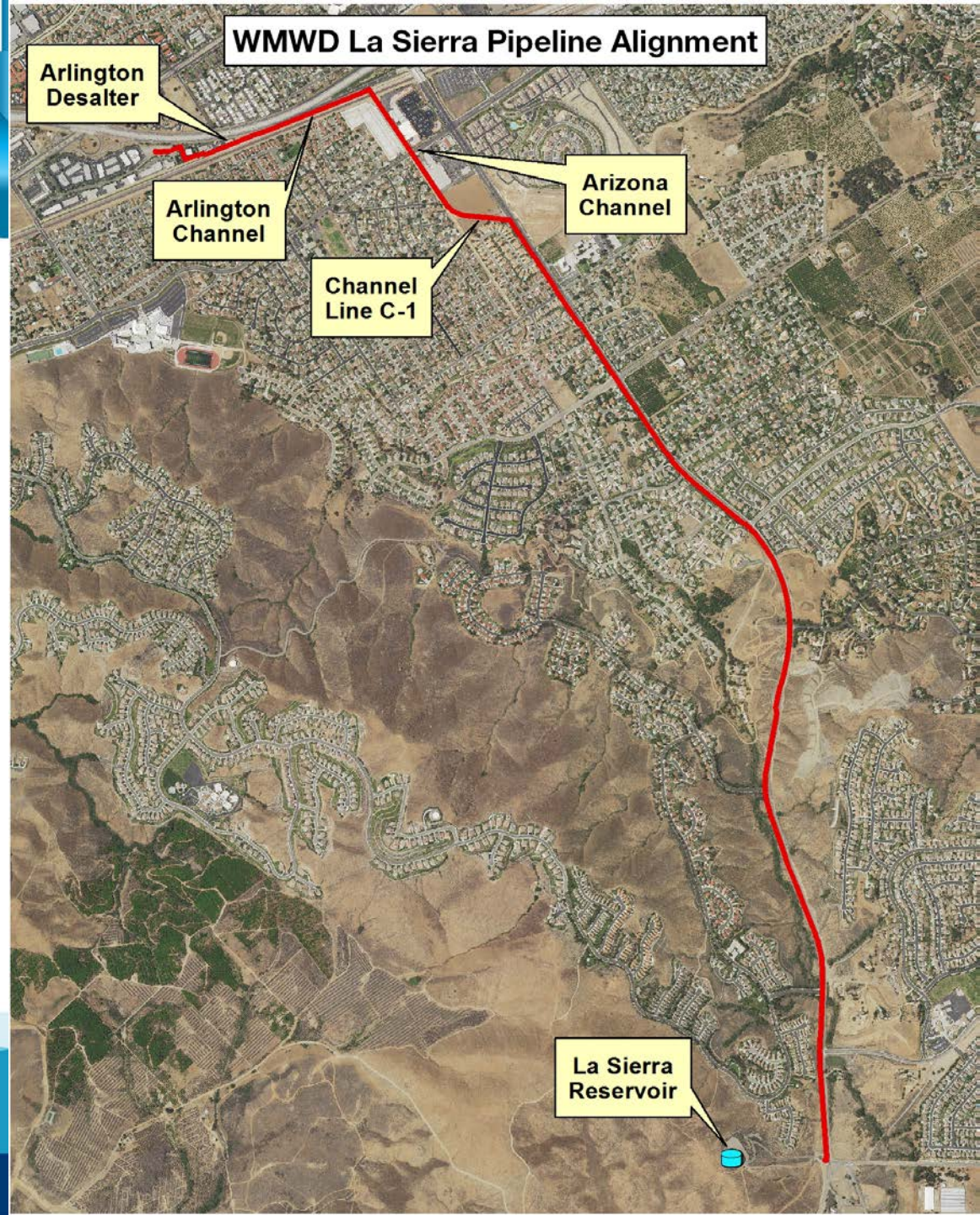
- \$36M investment in local water supply
- 5 miles of 30-inch pipeline
- New pump station
- 3,500 acre-feet of new local water





# Construction Area

- Starts spring 2017
- Anticipated to take 18-months to complete



WMWD La Sierra Pipeline Alignment

Arlington Desalter

Arlington Channel

Channel Line C-1

Arizona Channel

La Sierra Reservoir



# Construction Around SAWPA

- Western has been working closely with SAWPA staff on construction plans
- Pipeline will be constructed through the SAWPA parking lot on weekends and Fridays when SAWPA's office is closed.
  - Trenches will be covered at end of work on weekends, so the parking lot is available on each Monday.
  - Western will give SAWPA notice prior to beginning work.







**LEGEND**

- Water Line
- - - Suction Line

# Roadway Impacts

- Lane closures on La Sierra Avenue from just north of Arizona Avenue to El Sobrante Road
- Motorists asked to use alternate route, obey traffic controls
- Work in front of school being done during summer break to reduce impact





# Outreach

- Comprehensive outreach plan
- Public Outreach Meeting
  - Thursday, March 23 – 6 p.m. at Arizona Middle School



**CONNECTING THE DROPS**

**LA SIERRA PIPELINE EXPANSION**

**About La Sierra Pipeline**

Construction will start in January 2017 on the La Sierra Pipeline, a nearly \$36 million project to increase local water supply and increase drought resiliency. It will take approximately 18-months to complete.

**Fast Facts**

\$36M Project

- 5 miles of 30-inch pipeline
- 3,500 acre-feet of new, local, drought-proof water supply
- 5,400 horse power pump station at Arlington Desalter
- Construction January 2017 to Winter 2018 (Anticipated)
- Critical step towards helping region meet current and future water needs.

The project will install five miles of 30-inch pipe underground along La Sierra Avenue that will eventually transport 3,500 acre-feet of new, local, drought-proof water supply to approximately 60,000 customers in Western's Riverside retail service area.

The new water supply comes from capacity expansions at the Chino and Arlington Desalters.

La Sierra Pipeline will also have the capacity to provide an additional 3,500 acre-feet (for a total of 7,000 acre-feet) of water in cases of emergencies, and the project will provide water flow reliability even in the event of a temporary outage of imported water supplies.

Overall, the project will help Western Municipal Water District become more self-sufficient, reduce its dependence on costly imported water, and help the region meet current and future water needs.

**How will it work?**

Three projects will work together to deliver this new water supply to Western's customers.

First, an expansion of the Chino Desalter (Phase III) will increase new water production by 3,500 acre-feet per year. That new water will be allocated to the cities of Norco and Corona – cities that are currently getting water from the Arlington Desalter.

continued on next page

October 2016

The flyer includes logos for "Clean Water", "Water Benefits", and the "EPA" (United States Environmental Protection Agency).

**CONNECTING THE DROPS**

The reallocation will then free up 3,500 acre-feet of water at the Arlington Desalter which is also being expanded to increase capacity thanks to the addition of a new 5,400 horse power pump station.

The newly available water will be to be redirected and transported via the La Sierra Pipeline for use in Western's Riverside retail service area.

**How will I be affected?**

During the 18-month construction of the La Sierra Pipeline, travel lanes may be reduced to allow for construction on La Sierra Avenue from El Sobrante Blvd to just north of Sierra Avenue.

Residents are asked to exercise caution during this time, as alternate route is in construction.

**Cost**

of the La Sierra Pipeline is a \$36 million investment in local, reliable water supply.

October 2016

# CONNECTING THE DROPS

A graphic featuring blue pipes and a large blue water drop. The pipes are arranged in a network, with a horizontal pipe in the center and vertical pipes branching off. The water drop is positioned on the right side, hanging from the horizontal pipe. The background is a gradient of green and yellow.

**LA SIERRA  
PIPELINE  
EXPANSION**

Questions?

