

Commission Approval of Request for Proposals (RFP) for Design



Feb 21, 2017



Ian Achimore
Senior Watershed Manager
Santa Ana Watershed Project Authority



Conservation Team

Critical Success Factors



Goals, scope, costs, resources, timelines, and the contract term are approved by the Commission before executing an agreement to participate in a roundtable group.



Report and use results of roundtable's work, leverage information and involvement for the benefit of SAWPA, its members, and other stakeholders.



Conservation Team

Prior SAWPA Commission Approval for Project

- Feb 2015 – Submission of Funding Request to Regional Water Quality Control Board (Regional Board)
- July 2015 – Execution of Funding Agreement with U.S. Fish and Wildlife Service
- Dec 2015 – Execution of Funding Agreement with Regional Board
- Jan 2016 – Additional Funding from Regional Board
- Feb 2017 – Approval of Design Request For Proposals



Conservation Team

About the Santa Ana Sucker

- Size <6 inches
- Feed on algae, small invertebrates
- Listed as Threatened in 2000
- Range includes Santa Ana River, Los Angeles River, and San Gabriel River basins
- “The most pressing threat to the species is the lack of suitable habitat necessary to increase population resiliency” US Fish and Wildlife Service, 2014



Photo credit: Santa Ana Watershed Association



Conservation Team

Project Scope

- Amount of beneficial habitat for Santa Ana Sucker:
Total of **150 yards** Habitat Structure Length



Conservation Team

Possible Project Area

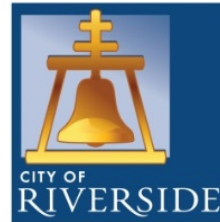
- Land owned by the State; managed by Riverside County Parks
- Access for equipment along Santa Ana River Trail



Project Implemented By the Fish Conservation Team

Team

Members:



City of Arts & Innovation



Team Description:

Determine reasons for the decline of the Sucker in the Watershed, and devise strategies for its recovery.

Team Benefits:

Receive grant funding regulated entities not eligible to receive.

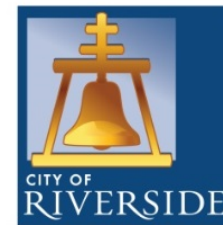
Team projects improve baseline of species.



Conservation Team

Project Funding

- Grant from US Fish and Wildlife Service
- Supplementation Environmental Project (SEP)
Funding from Regional Board
- Funding from Sucker Team



City of Arts & Innovation



Conservation Team

Project Partners (Technical Assistance)

- San Bernardino Valley Municipal Water District
- US Army Corps of Engineers – LA District
- US Fish and Wildlife Service – Palm Springs Office
- Orange County Water District



**US Army Corps
of Engineers®**
Los Angeles District



SINCE 1933



Conservation Team



Santa Ana Sucker Fish Habitat Projects in the Santa Ana River Watershed

Other Habitat Projects



IS-15

Jurupa Valley

SR-60

Santa Ana River

Norco

SR-91



Legend

-  RCRCD In Lieu Fee Area (Habitat Restoration)
-  Tequesquite Creek Project (Habitat Restoration)
-  SA Sucker Conservation Team Project (Rock Habitat) -Proposed-
-  Upper SAR HCP Project (SARCCUP Creek Restoration)
-  Sunnyslope Creek Project (Habitat Restoration)
-  OCWD Gabions Project (Rock Habitat)



Design RFP

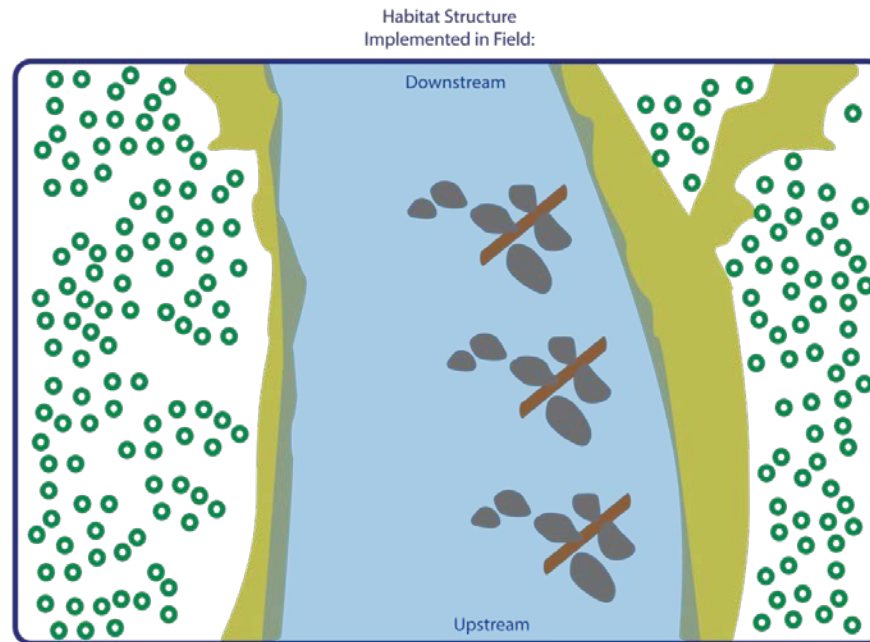
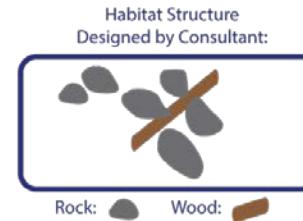
- The RFP will allow SAWPA to bring on a consultant to:
 - draft project concepts and alternatives,
 - collect field data,
 - design the Project,
 - create plans, specifications and drawings,
 - estimate construction cost.



Conservation Team

Design RFP

- RFP beneficial as the design can be replicated in the field:



Conservation Team

Schedule

Pre-Permit
Application

- Design RFP Release Date – February 21, 2017
- RFP Responses Due Date – March 15, 2017
- Commission Approval of Design Contract – April 4, 2017
- Conclude Pre-Permit Design – June 5, 2017

Orange County Water District to Assist with Permit/CEQA Writing



Post Permit
Application

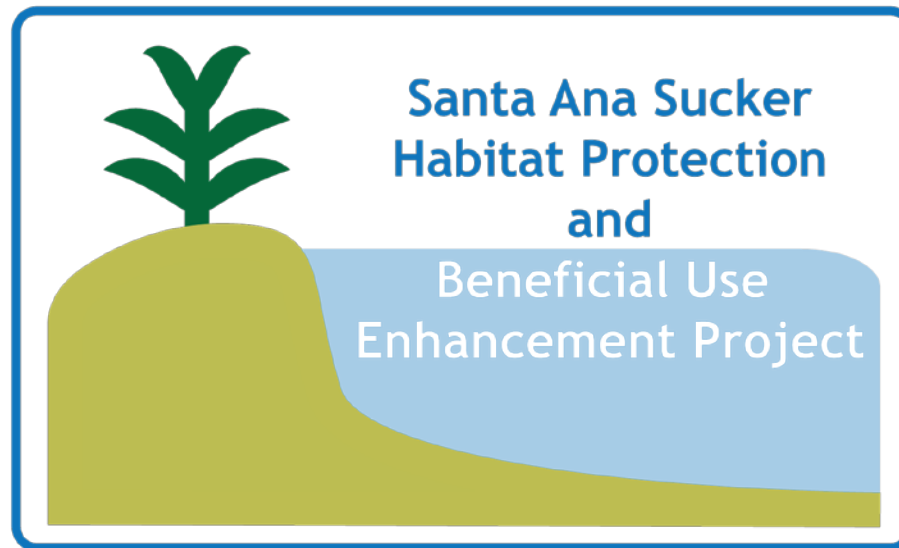
- Submit Permit Applications – June/July 2017
- File Environmental Documents – Summer 2017
- Receive Feedback from Permit Review – Winter 2017
- Finish Final Design – Winter/Spring 2017
- Construction – Fall 2018



Conservation Team

Recommendation

That the Commission approve issuance of the Request for Proposals for the Design of the Santa Ana Sucker Protection and Beneficial Use Enhancement Project.



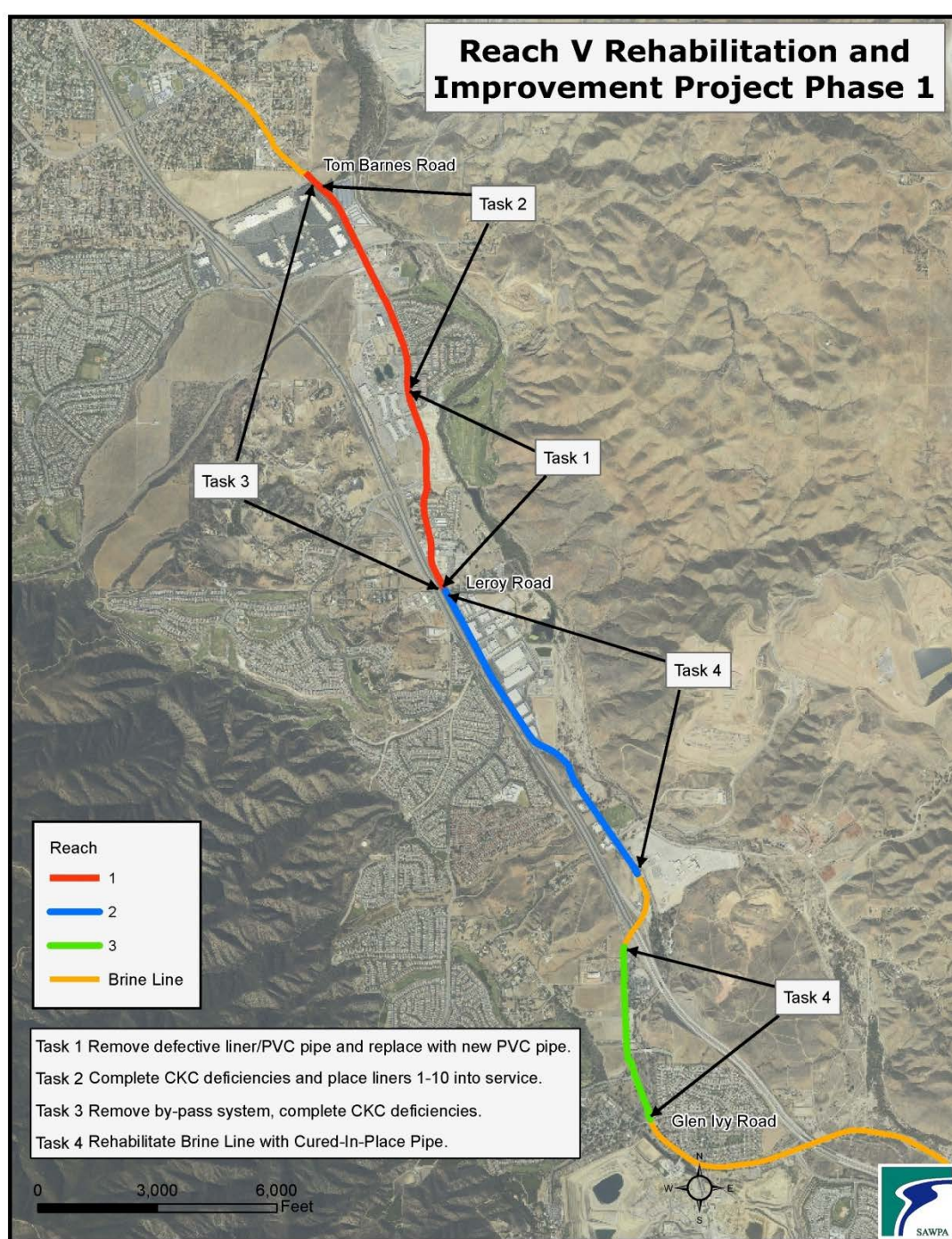
Conservation Team

Inland Empire Brine Line
Reach V Rehabilitation and
Improvement Project – Phase 1

Item 5.D

February 21, 2017

Reach V Rehabilitation and Improvement Project Phase 1





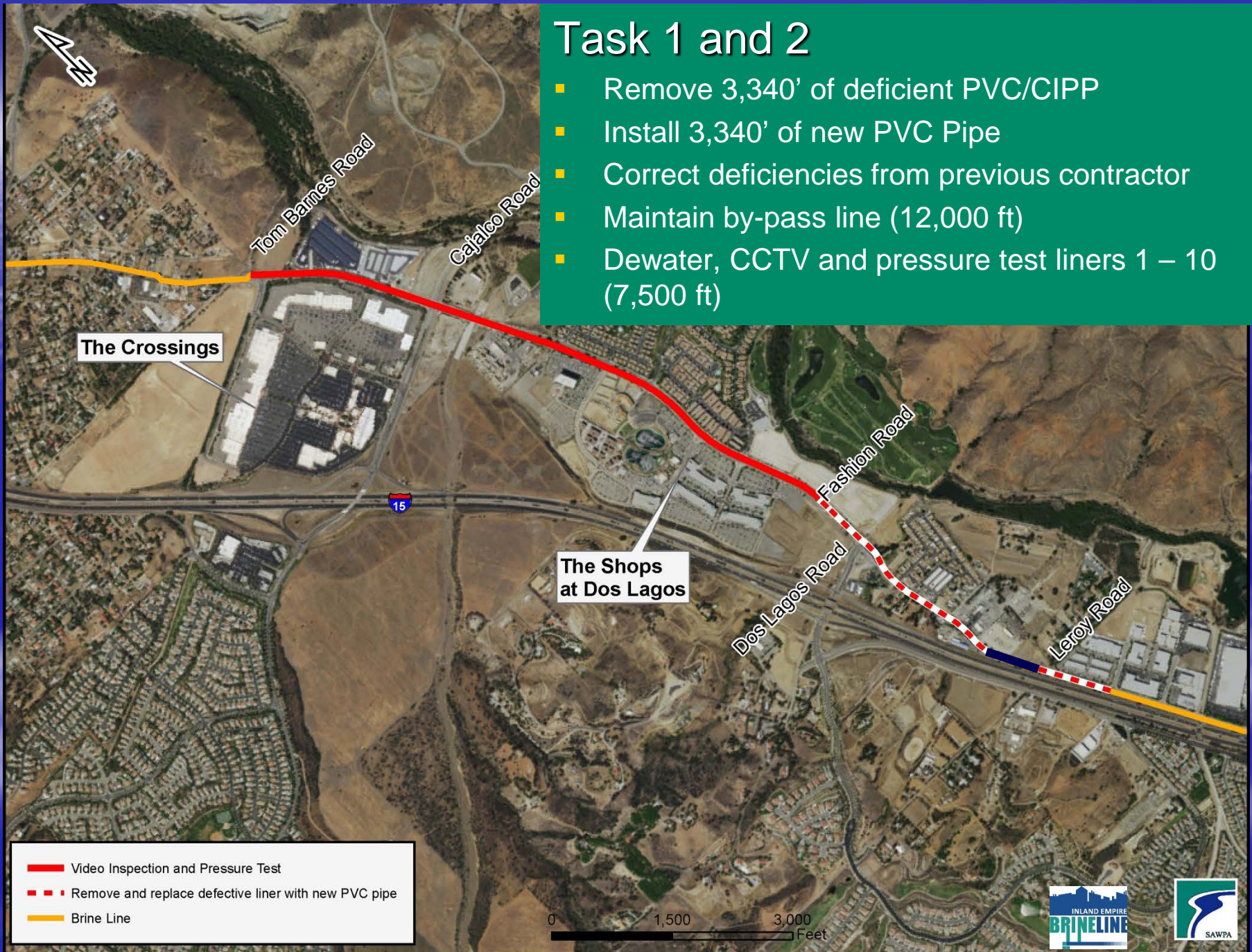




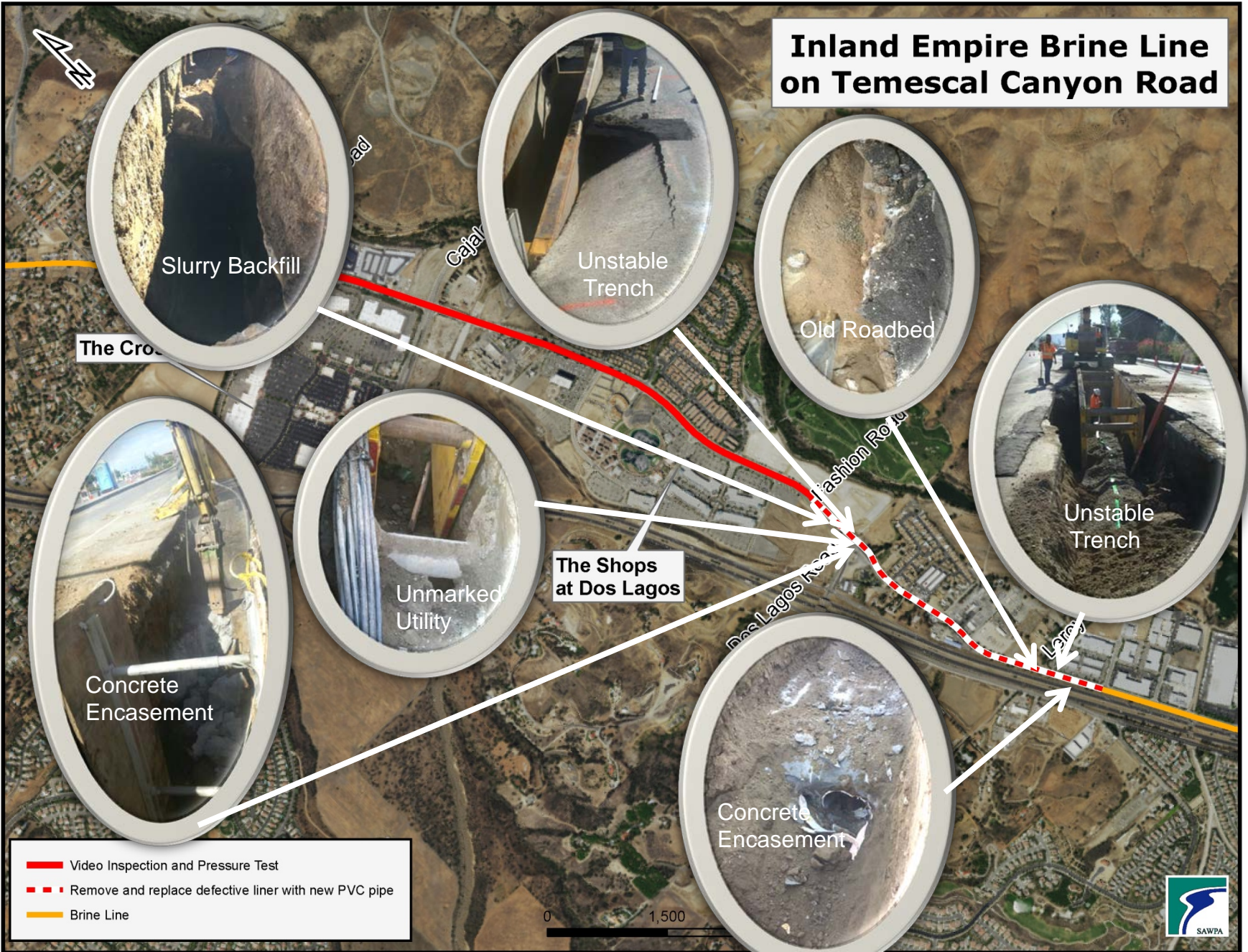
Questions?

Task 1 and 2

- Remove 3,340' of deficient PVC/CIPP
- Install 3,340' of new PVC Pipe
- Correct deficiencies from previous contractor
- Maintain by-pass line (12,000 ft)
- Dewater, CCTV and pressure test liners 1 – 10 (7,500 ft)



Inland Empire Brine Line on Temescal Canyon Road



Public Outreach

- Project Update Brochures
- Construction Hotline
- Construction E-mail address
- Posting to We R Temescal Valley Facebook Page
- Project Website



PIPELINE PROJECT UPDATE

▶ **WHAT'S NEW AND WHY**

The contractor upgrading the Brine Line, WEKA Inc. of Highland, CA, is operating work crews at full staffing, maximizing production and efficiency on the project. In addition, repaving a segment of Temescal Canyon Road in Corona is scheduled to start on Friday, 11/4, and continue into early next week.

▶ **WHAT IT MEANS TO YOU**

WEKA will replace the temporary asphalt on Temescal Canyon Road near Fashion Drive – restoring a smooth driving surface on a portion of the roadway disturbed by work on the Brine Line. Final resurfacing will follow later. Generally, construction may slow traffic between Tom Barnes Street and Leroy Drive, 9 AM to 5 PM.

▶ **PROCESS AND TIMELINE**

The project remains fast tracked, reducing inconvenience while ensuring high-caliber work on the pipeline. The upgrades in Corona may be finished as soon as the end of November, with other areas in Phase 1 completed in early 2017. Write to us at construction@sawpa.org.

Project Overview

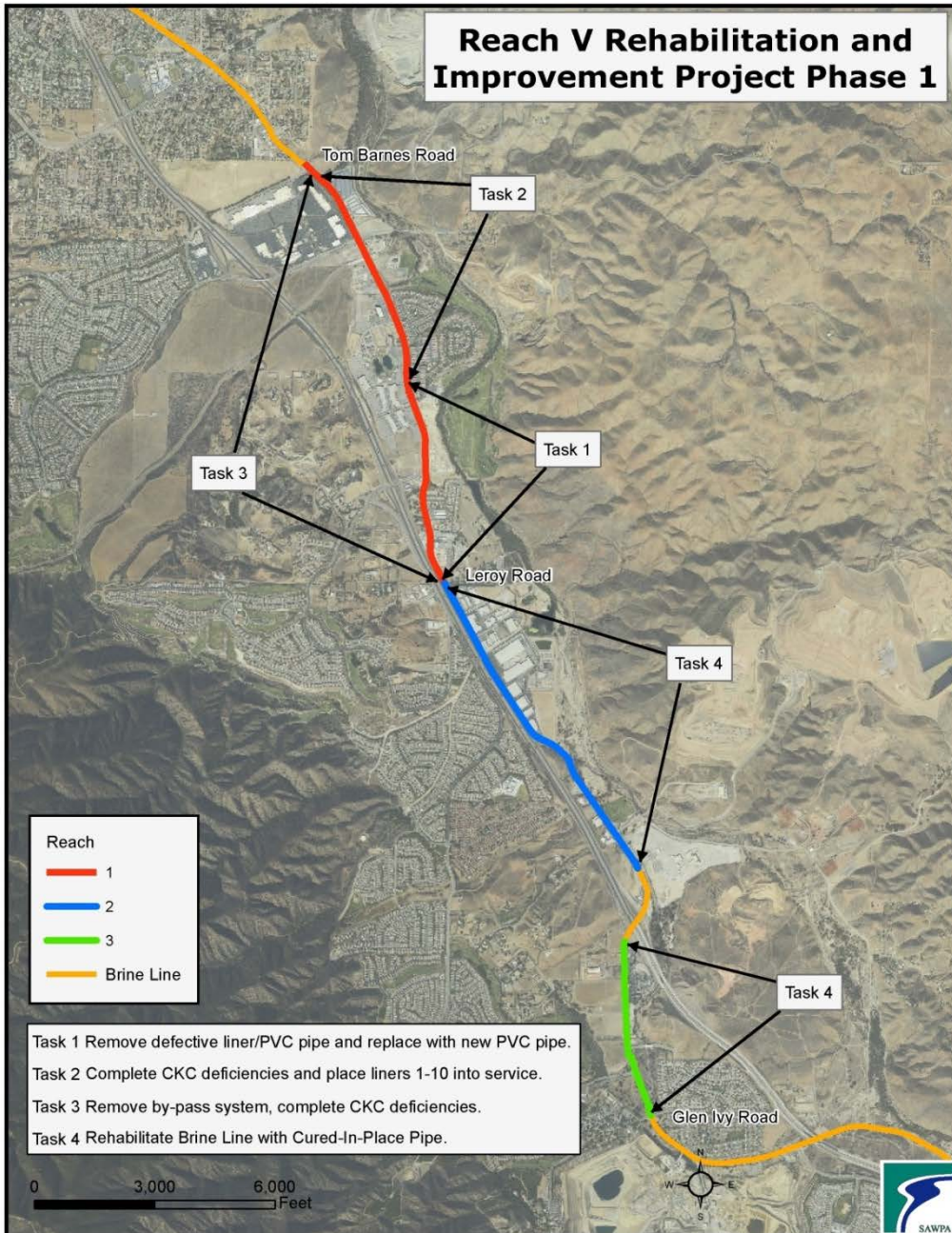
SAWPA is working to test, fortify and/or replace 5 miles of the Brine Line, an underground pipeline that conveys salty water from the Inland Empire to the Pacific Ocean. The brackish water comes from key sectors of the Inland economy, including power plants, manufacturers, and groundwater desalters that produce large volumes of drinking water.

The project calls for placing new pipes within older pipes which have lost their shape over time. With loss of shape comes increased risk of spills, and the upgrades follow a 2011 Brine Line leak that was remediated. Water from the Brine Line poses no health risk but, if left untreated, could damage the local environment.

Santa Ana Watershed Project Authority
Inland Empire Brine Line
11615 Sterling Avenue
Riverside, CA 92503

Tell us what you think.
Hotline: 951.354.4250
Email: construction@sawpa.org
For updates: www.sawpa.org/brineline

Reach V Rehabilitation and Improvement Project Phase 1



Task 4

■ Project Description

- Clean, CCTV, Laser Profile – 12,800 ft
- Repair upto 12, 800 ft of PVC pipe
- 9 New MAS structures
- 9 New Avs, and 9 New Blow-offs

Inland Empire Brine Line City of Beaumont Request to Connect

SAWPA Commission
Item 5.F
February 21, 2017

Brine Line Request to Connect

Recommendation to Commission:

- Endorse the City of Beaumont's request to connect to the Brine Line
- Direct SAWPA staff to request approval from OCSD

Brine Line Request to Connect

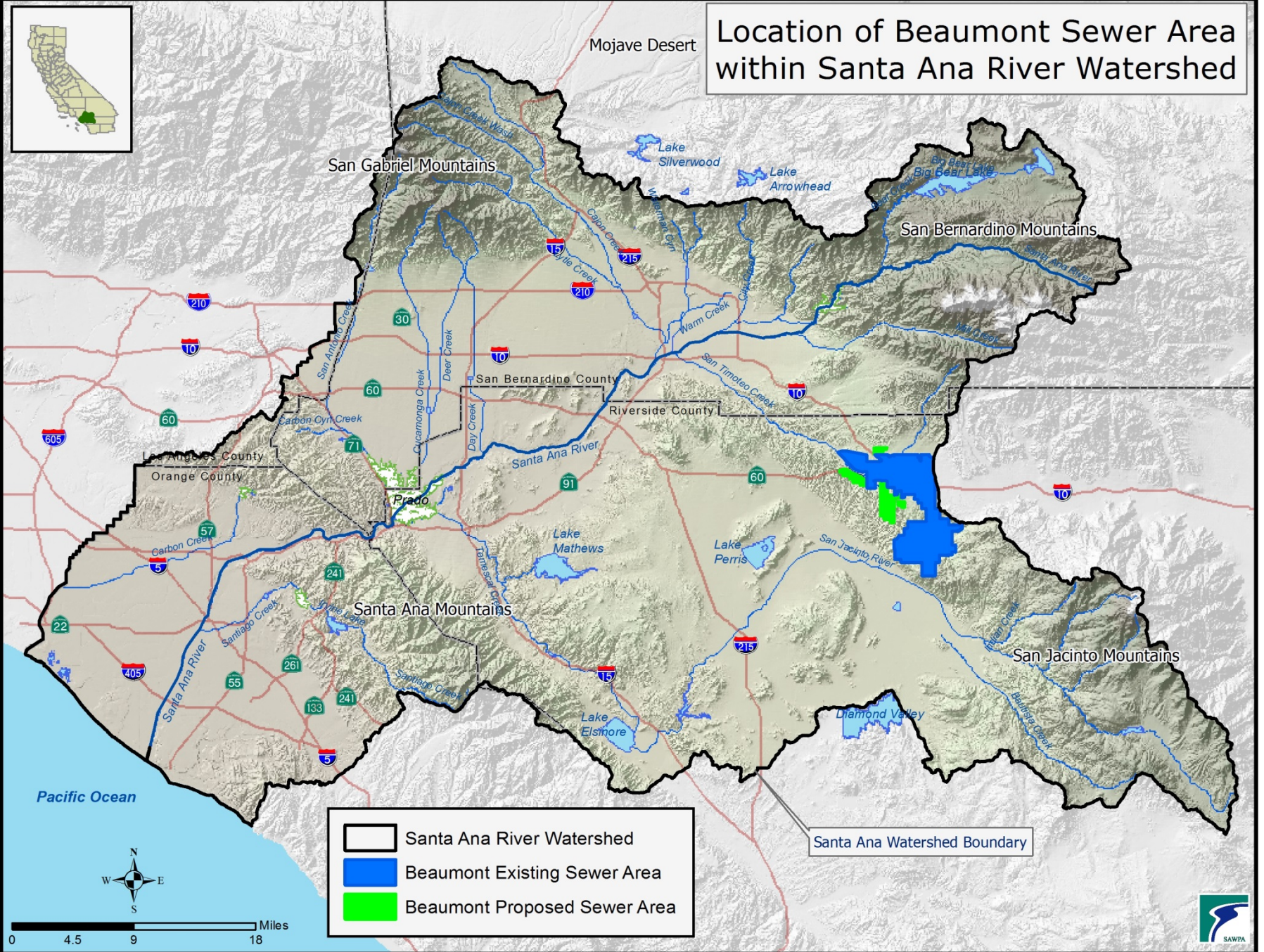
- City of Beaumont initial request 12/13/16 ltr
- Met 1/10/17 to identify additional data needs
- Supplemental information provided via 1/30/17 ltr

Discharge RO concentrate (brine). RO plant to be operational by 2020. Initial brine flow 0.25 mgd (+2%). Ultimate 0.75 mgd (+7%). TDS 1,800 mg/l.

Brine Line Request to Connect

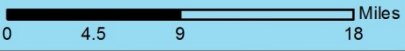
- Beaumont is outside Brine Line Service Area but within the watershed
 - EMWD, IEUA, Valley District, WMWD area
- Issue: per 1996 Agreement with OCSD, specific approval from OCSD is req'd
 - Yucaipa Valley Water District approved in April 2014

Location of Beaumont Sewer Area within Santa Ana River Watershed

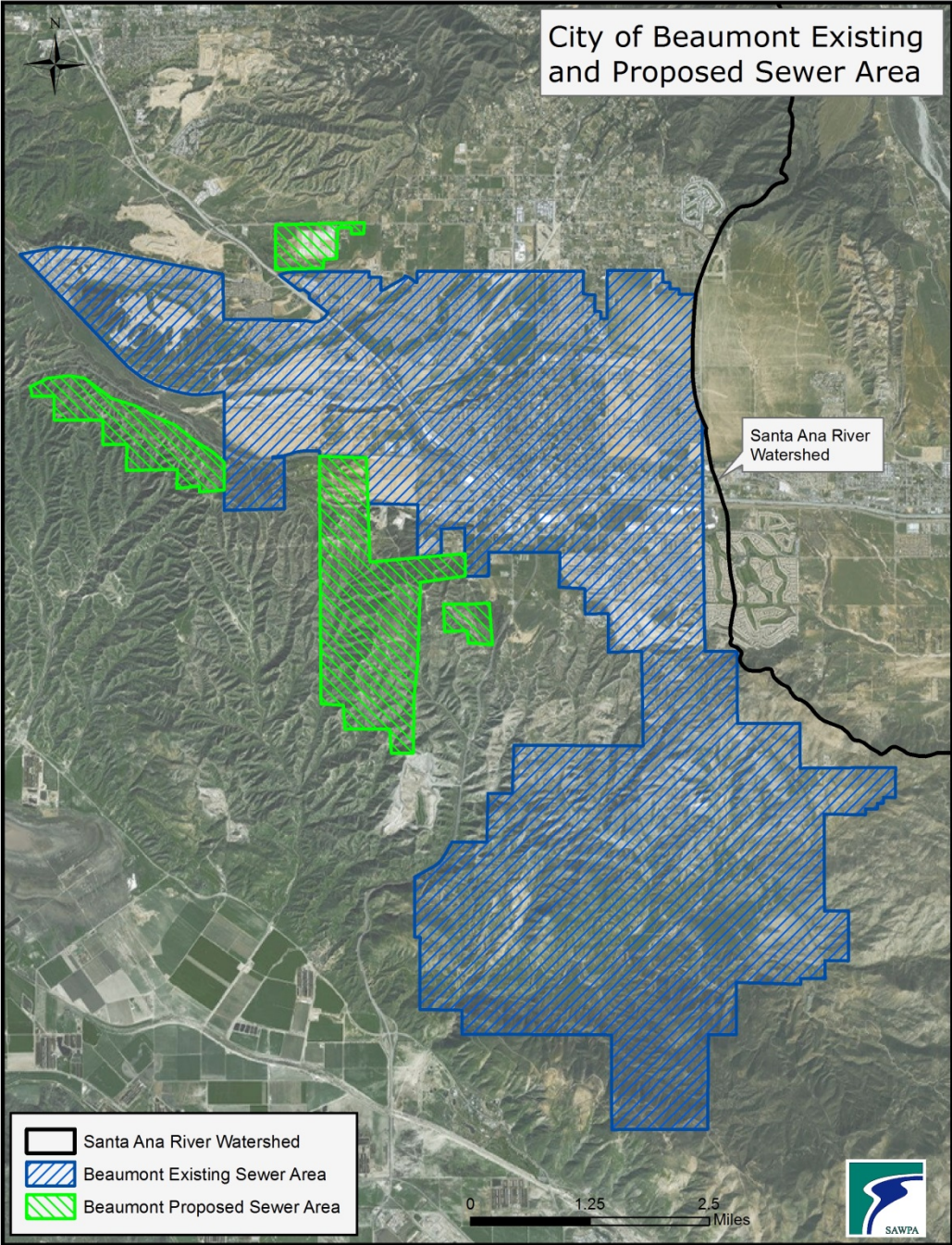


- Santa Ana River Watershed
- Beaumont Existing Sewer Area
- Beaumont Proposed Sewer Area

Santa Ana Watershed Boundary



City of Beaumont Existing and Proposed Sewer Area



Beaumont Sewer System

- Treatment Plant discharges to Cooper's Creek, tributary to San Timoteo Creek, SAR
- Groundwater management zones – salinity management strategy
- Plan to comply with salinity limits
 - Install RO at WWTP, plant expansion
 - 22 mile Brine Line extension (San Bernardino to Beaumont)

Brine Line CSFs

- Support the achievement of a long-term, watershed-wide salinity balance through:
 1. Water quality maintenance, enhancement, and protection in the Santa Ana River and groundwater basins;
 5. Providing existing and future public agencies and private industry with a cost-effective salinity management option.

Next Steps

- Submit letter to OCSD requesting approval of Beaumont's request
- If approved, work with Valley District, WMWD and/or IEUA to provide the needed additional pipeline and treatment and disposal capacity
 - Commission approval of transfer
- Beaumont to complete and adopt an Ordinance, Enforcement Response Plan, other pretreatment program documents

Brine Line Request to Connect

Recommendation to Commission:

- Endorse the City of Beaumont's request to connect to the Brine Line
- Direct SAWPA staff to request approval from OCSD

QUESTIONS?

Brine Line Reaches

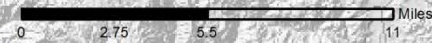
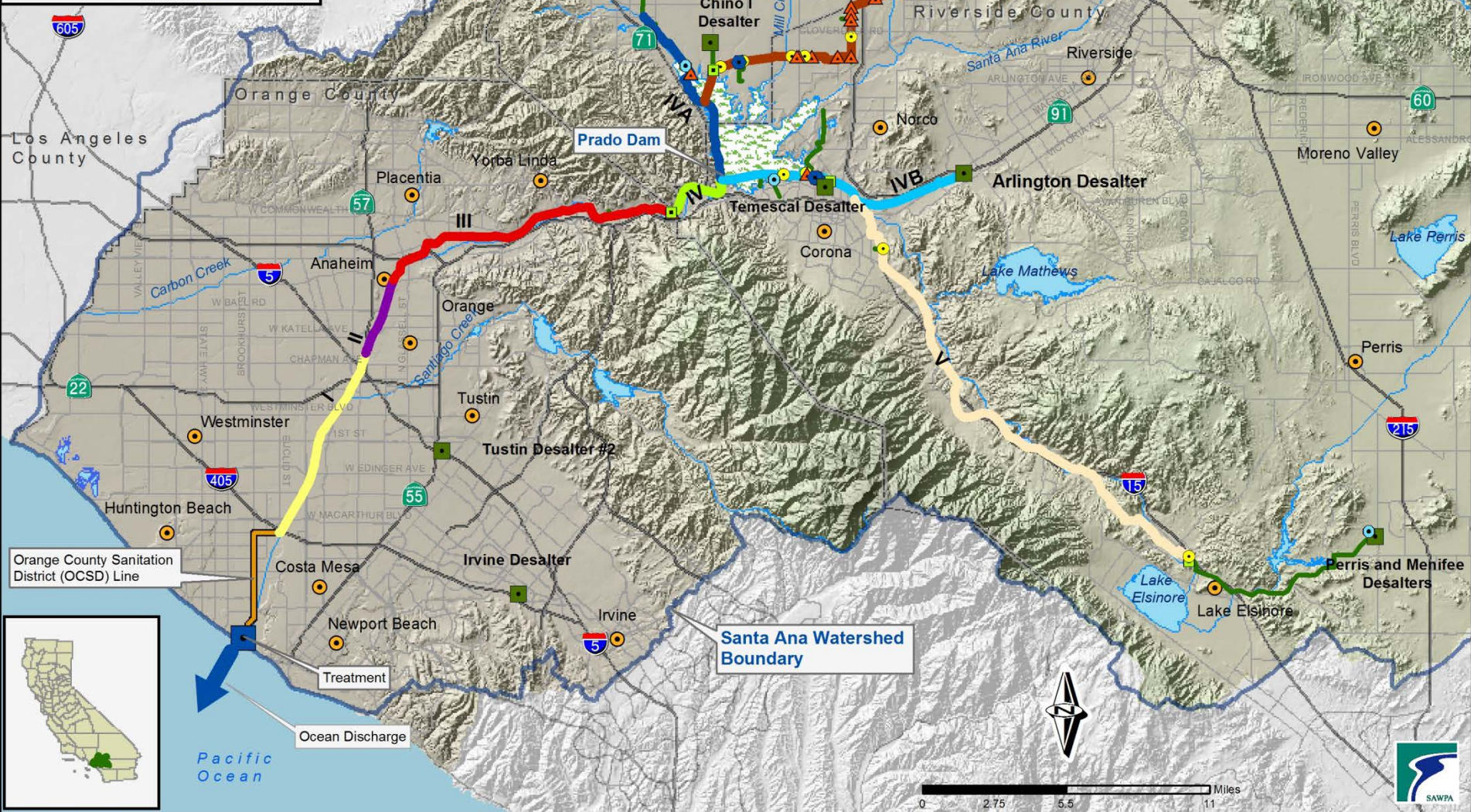
Legend:

Desalters

- Brine
- Commercial
- Commercial/Domestic
- ▲ Domestic
- Truck Dump
- Lateral
- OCSD Line

Brine Line (Reach)

- I
- II
- III
- IV
- IVA
- IVB
- IVD
- IVE
- V

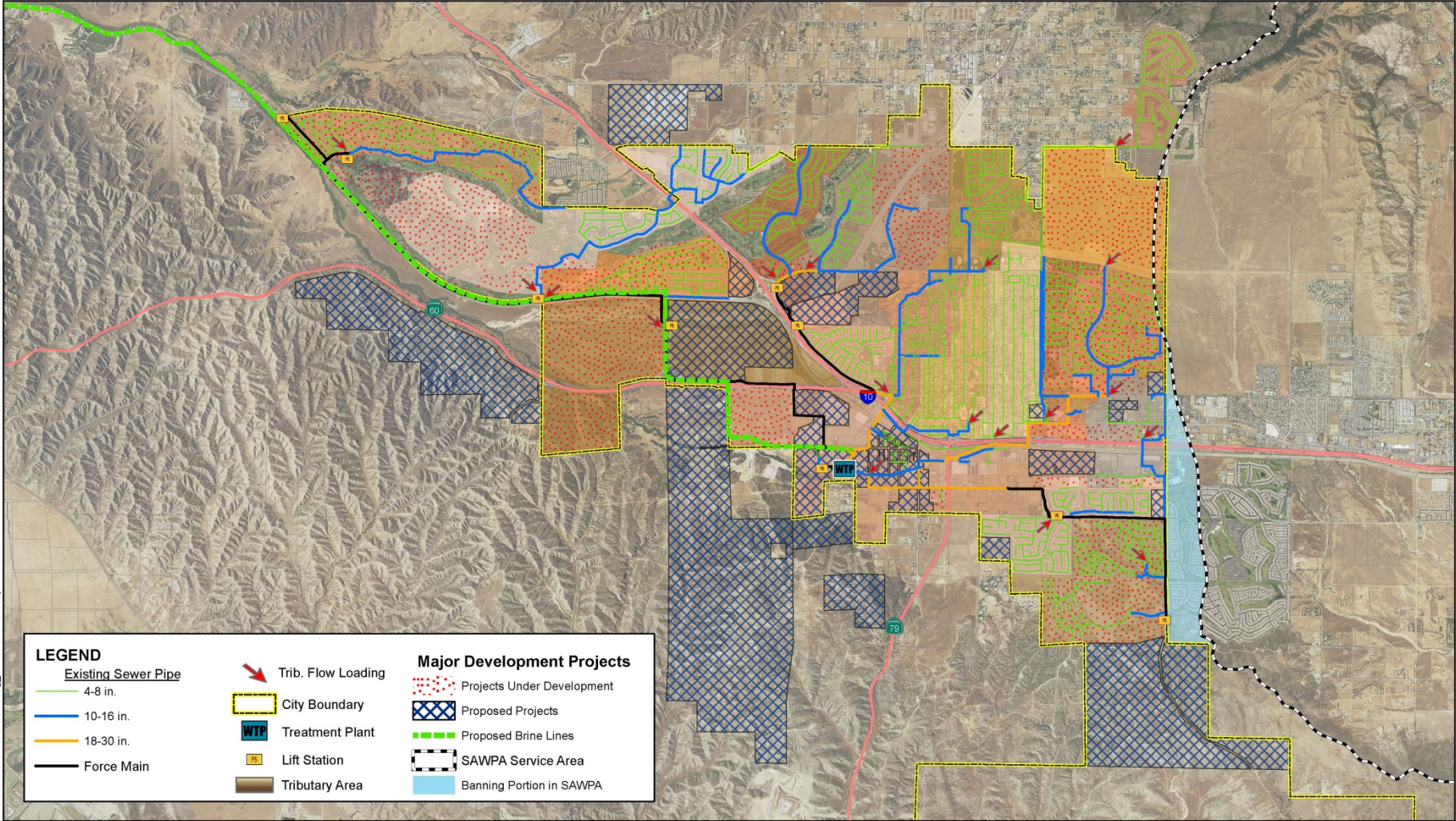


Brine Line PATs

■ Critical Success Factors

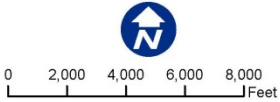
2. Ensure that Brine Line value and benefits are known to economic development agencies and others.
3. Maintain sufficient funding and reserves for current and future Capital and O&M costs through a stable, predictable, and affordable rates and charges.
6. Conduct proactive capital and O&M planning to improve efficiency and maintain needed capacity in the long and medium terms.
7. Maintain strong relationships with OCSD and regulatory agencies.
8. Operate the Brine Line to: (1) protect the OCSD treatment plant and the environment from non-compliant dischargers, and (2) eliminate any uncontrolled pipeline releases.

G:\2016\16-0171\GIS\Existing_Sewer3.mxd, Map created 26 Jan 2017



LEGEND		Major Development Projects	
<u>Existing Sewer Pipe</u>		Trib. Flow Loading	Projects Under Development
4-8 in.	City Boundary	Proposed Projects	Proposed Brine Lines
10-16 in.	Treatment Plant	SAWPA Service Area	Banning Portion in SAWPA
18-30 in.	Lift Station		
Force Main	Tributary Area		

Sources: City of Beaumont, 2013; Riverside Co. GIS, 2016.



ATTACHMENT B - Existing Wastewater Facilities

Public Workshop Report



Draft 2016 Clean Water Act Sections 303(d) and 305(b) Integrated Report for the Santa Ana Region

February 21, 2017

Critical Success Factors



SAWPA has a strong reputation as a watershed-wide, knowledgeable, neutral and trusted **facilitator, leader, and administrator** of contracted activities.



Goals, scope, costs, resources, timelines, and the contract term are **approved by the Commission** before executing an agreement to participate in a roundtable group.



Clear upfront criteria and terms for completing or transitioning efforts that have been successfully established or completed.



Report and use results of roundtable's work, **leverage information** and involvement for the benefit of SAWPA, its members, and other stakeholders.



Adequate professional staff and resources to effectively provide facilitation, management, administrative and **technical support to collaborative work efforts.**

Public Workshop

Purpose: Provide public review and receive comment on the updates to 303(d) List and 305(b) Report (the Integrated Report) for the Santa Ana Region

Date: Feb. 8, 2017

Location: SAWPA Boardroom

Written Public Comments

Deadline: 5:00 pm, Monday, March 6, 2017



Workshop Outline

- Regulatory Background
- Integrated Report Process
- Assessment Results
- Next Steps

Regulatory Background

Section 303(d) of the Clean Water Act requires States to

- Develop a list of waterbody segments that are not meeting water quality standards
- Submit the statewide 303(d) List to USEPA for approval
- Establish Total Maximum Daily Loads (TMDLs) or TMDL alternatives



Regulatory Background

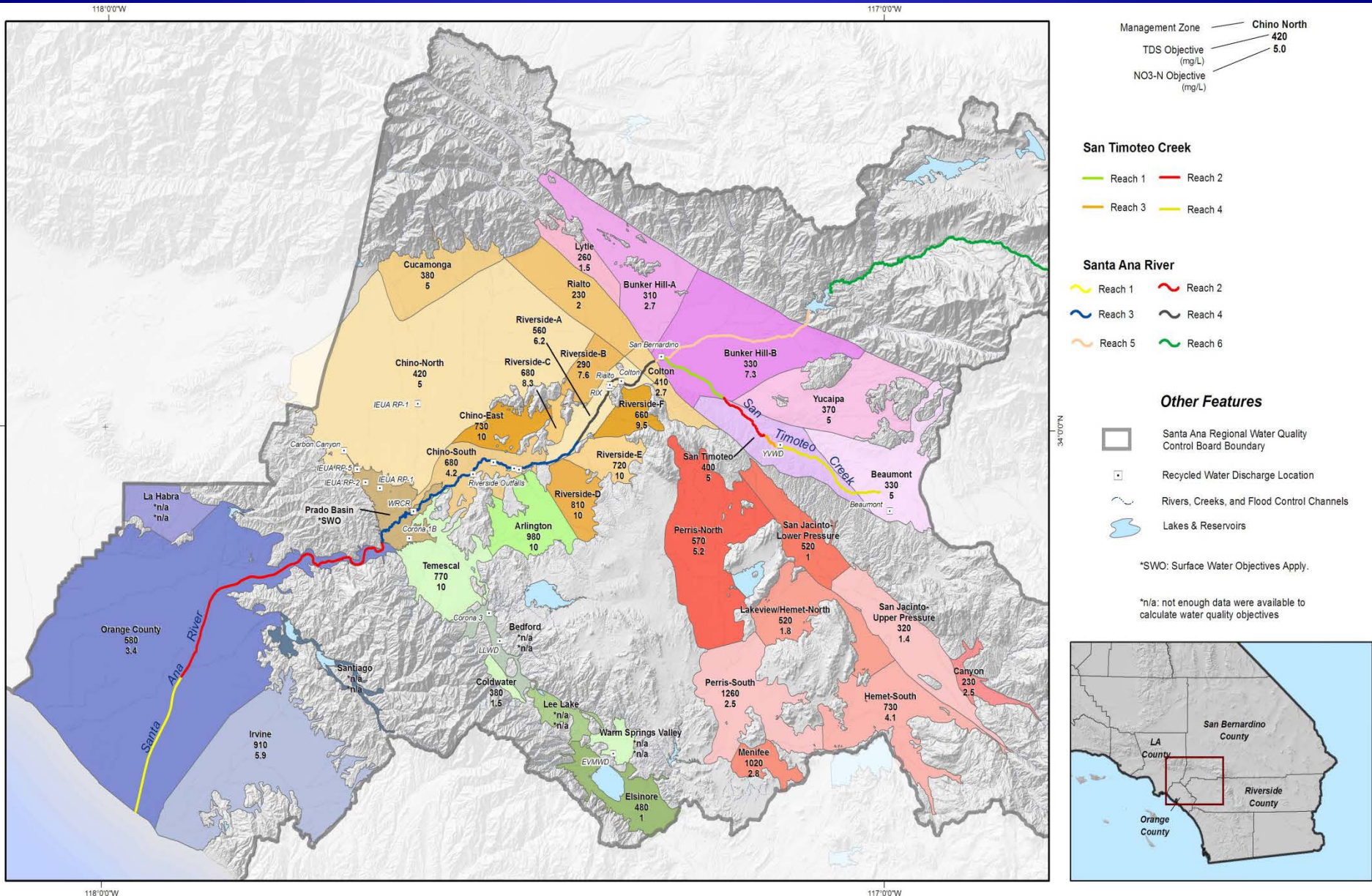
Section 305(b) of the Clean Water Act requires States to

- Report to USEPA on the conditions of its waters every other year (the 305(b) Report)

Changes to the 305(b) Report do not require USEPA approval.



Santa Ana River Watershed Regional Board Reaches, Lakes, Beaches and Creeks

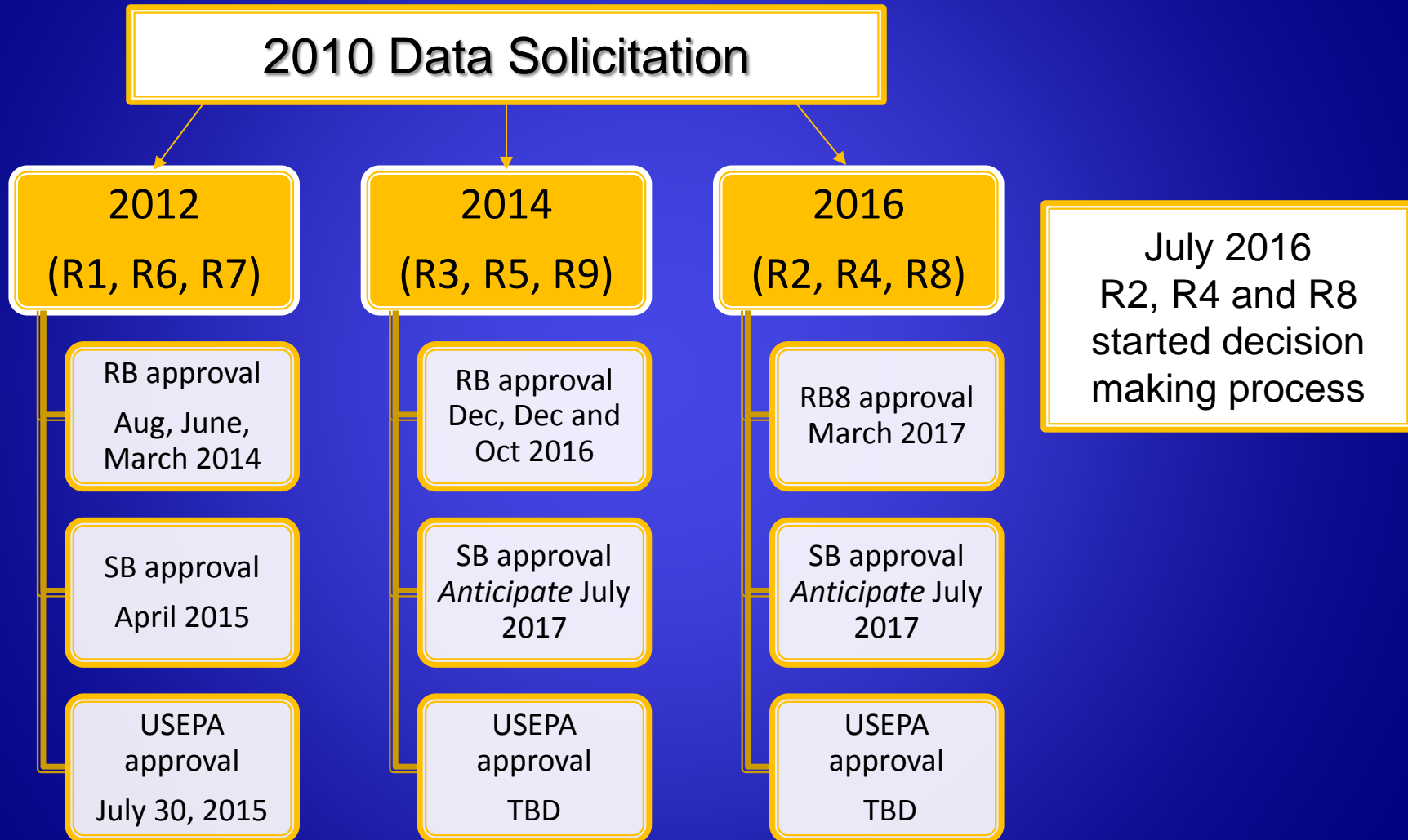


Integrated Report Process

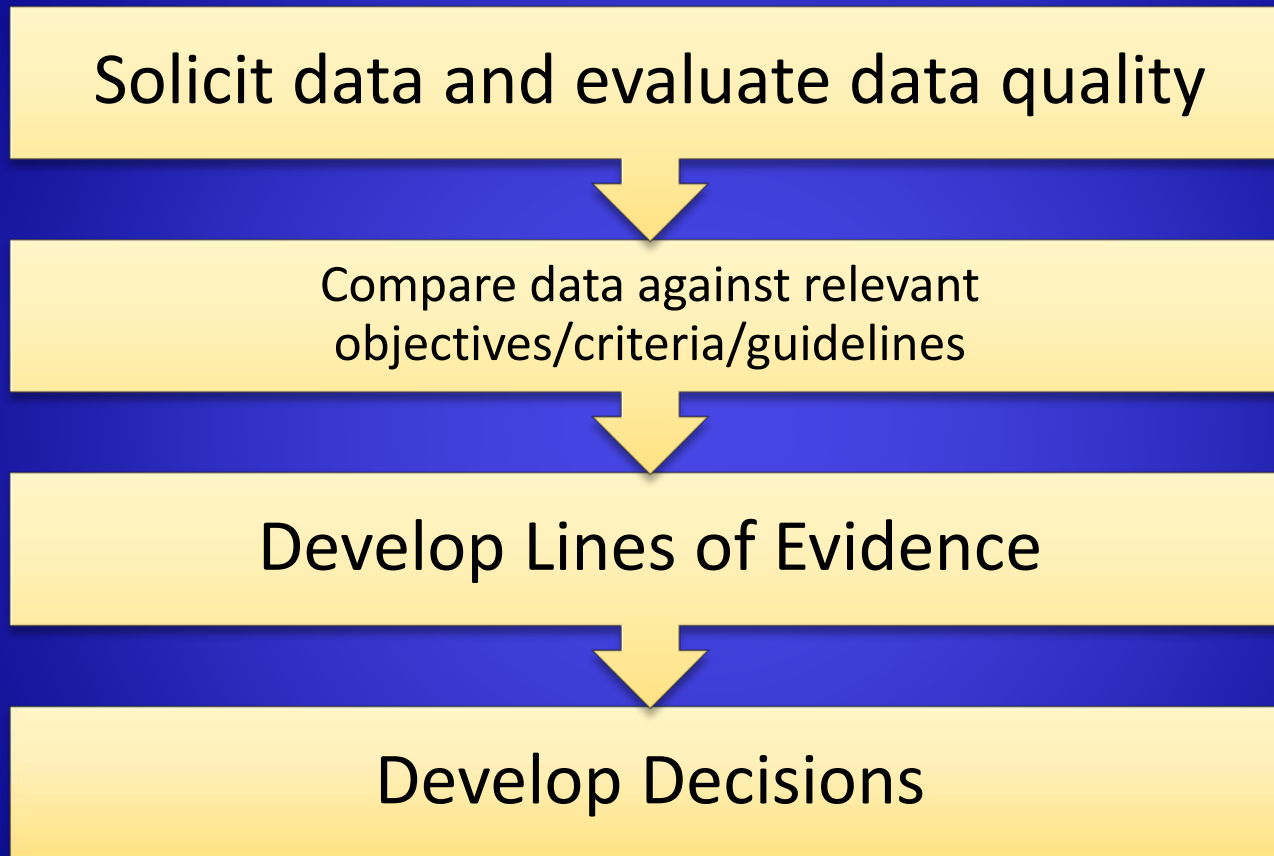
The Listing Policy

- The Water Quality Control Policy for Developing California's Clean Water Act Section 303(d) List (SWRCB, 2004, amended 2015)
- Provides guidelines for the water quality assessment process and establishes a standard approach for developing California's 303(d) list

State's Assessment Timeline



Data Assessment Overview



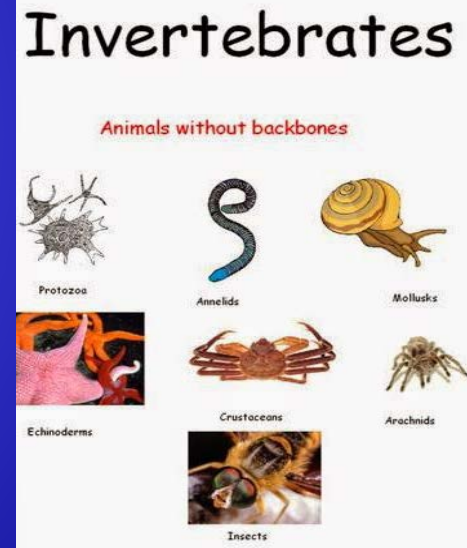
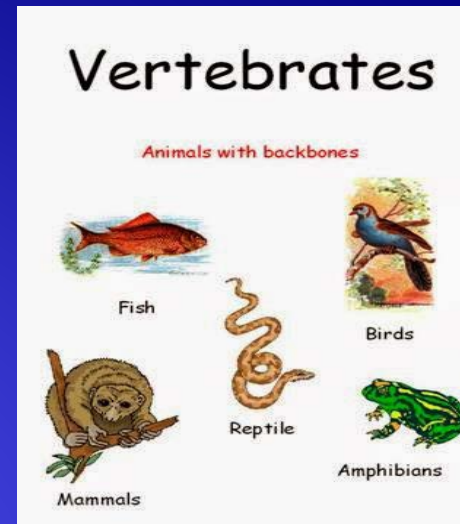
Special Assessment Issues

Bioassessment Data

Bioassessment is an evaluation of the condition of a waterbody based on the organisms present in the water.

Santa Ana BP Narrative:

*Inland surface water communities and populations, including **vertebrate**, **invertebrate**, and **plant species**, shall not be degraded as a result of the discharge of waste. Degradation is damage to an aquatic community or population with the result that balanced community no longer exists.*



California's Evaluation Guidelines for Benthic Invertebrate Community

Southern California Index of Biotic Integrity

- Regionally scaled multi-metric index
- Score >56, Similar to “Least Disturbed”
- Score 40-56, Likely OK
- Score <40, Likely disturbed



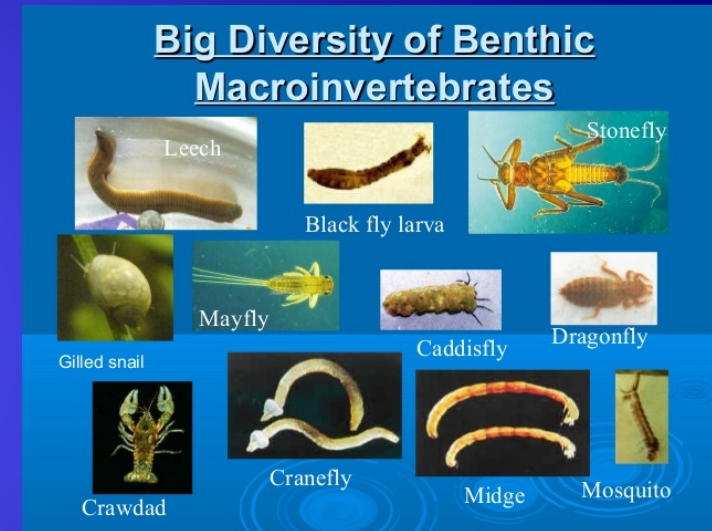
California Stream Condition Index (CSCI)

- Applicable Statewide
- Score ≥ 0.92
Likely intact condition
- Score 0.79 – 0.91
Likely OK
- Score < 0.79
Likely Degraded



Listing Decisions for Benthic Invertebrate Community

- Statewide Index (CSCI) used over Regional Index where available
- Add to 303(d) list when
 - Available scores showing benthic community is “Likely degraded” AND
 - Associated with chemical concentrations, temperature, dissolved oxygen, trash and other pollutants
 - New category: Benthic Community Effects



Early Concerns being addressed through collaboration among flood control agencies and Roundtables consultants

- New proposed bacteria listings in Middle Santa Ana River (SAR) – Middle SAR Pathogen Task Force
- Proposed benthic listing for SAR Reach 3 – possible excess salinity – Basin Monitoring Program TF
- Proposed DDT, Mercury, PCB and Benthic Listings - Riverside County Flood Control District
- DDT and Chlordane listings - San Bernardino County Flood Control District

REC Standards Basin Plan Amendment for Inland Surface Waters due to SAWPA's Roundtable – Stormwater Quality Standards Task Force

- Removed the fecal coliform objectives for REC-1
- Provided for high flow suspension of the REC-1 beneficial use.
- Removed the REC-1 beneficial use designation from certain waterbody segments based on Use Attainability Analyses.
- Removed the indicator bacteria objectives associated to the municipal drinking water use (MUN).



2016 Listing Cycle Indicator Bacteria Seven (7) Proposed Delistings

- Removal of REC-1 Beneficial Use
 - Cucamonga Creek Reach 1
 - Santa Ana Delhi Channel
- Consideration of only *E. coli* data
 - Canyon Lake
 - Lytle Creek
 - Mill Creek Reach 2
 - Silverado Creek
- Revised tiered *E. coli* SSM objective based on use
 - Santa Ana River Reach 2

Response Deadline

- Written Comment Period –January 26, 2017 to March 6, 2017
- SAWPA Task Forces and partners are using Risk Sciences to review impacts of the new 303(d) listing and will prepare letter responses to Regional Board by their Mar. 6, 2017 deadline
- 303(d) List approval recommendation at the next Regional Board Meeting –March 17, 2017

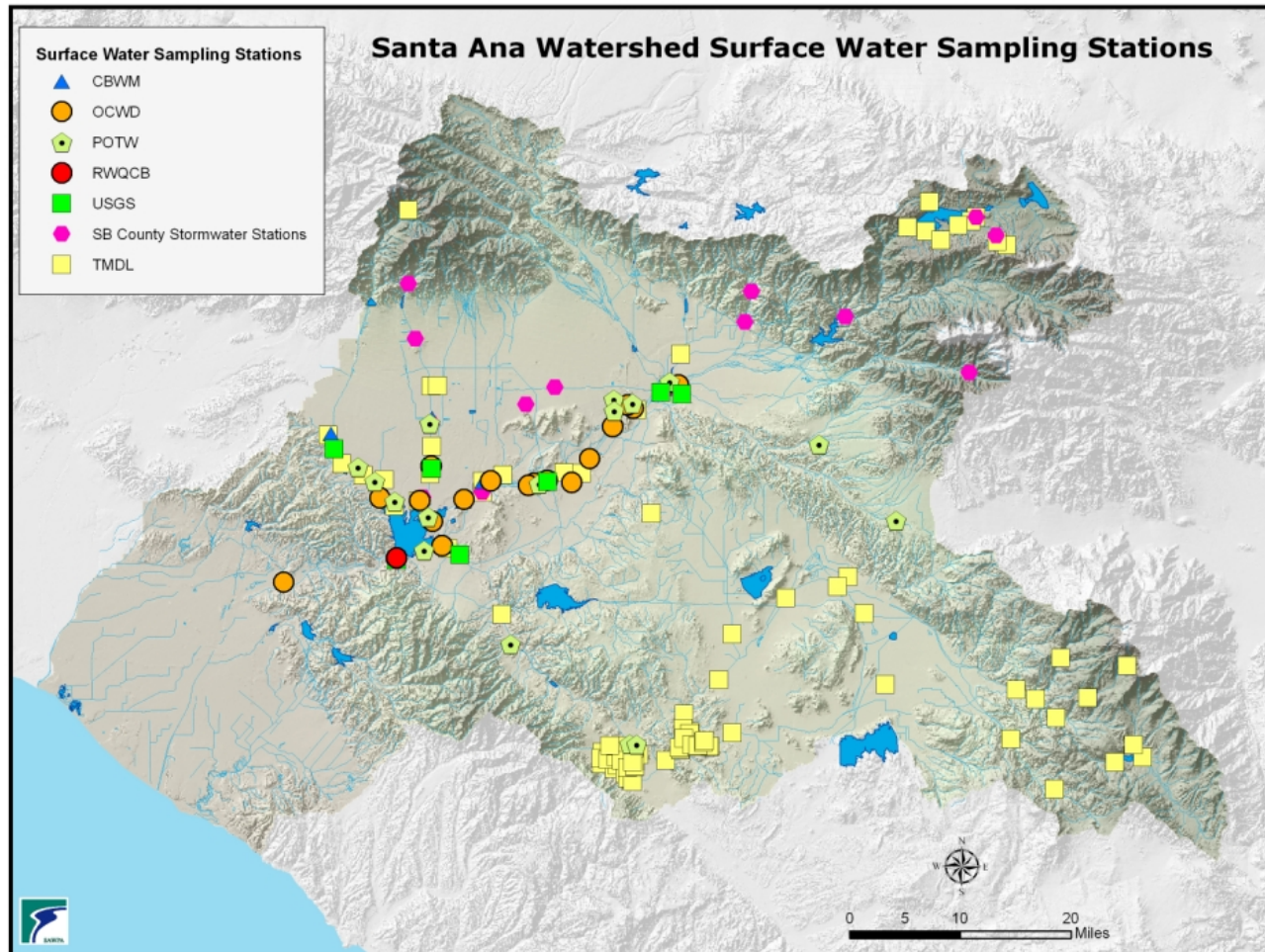


Issues and concerns with 303 d list support data

- Some data not in State water quality database (CEDEN)
- Some data from other non-profit organizations and unofficial agency coalitions
- Data entered into other State databases
- Data not reflective of temporal or spatial variation



SAWPA Previously Proposed Regional Surface Water Monitoring Program for the Santa Ana Watershed – 4/6/11



April 2011 Stakeholder Response

- Water Reclamation Agencies previously indicated they were not interested.
- Due to potential impact of 303d listing and future listings, MS4 permittees and flood control agencies may be in.
- SAWPA staff will reconvene monitoring agencies under Reg WQ Monitoring Program Task Force to discuss interest.



Questions?