

OWOW Governance Policy

As revised
Jan 2013

Larry McKenney
November 16, 2017

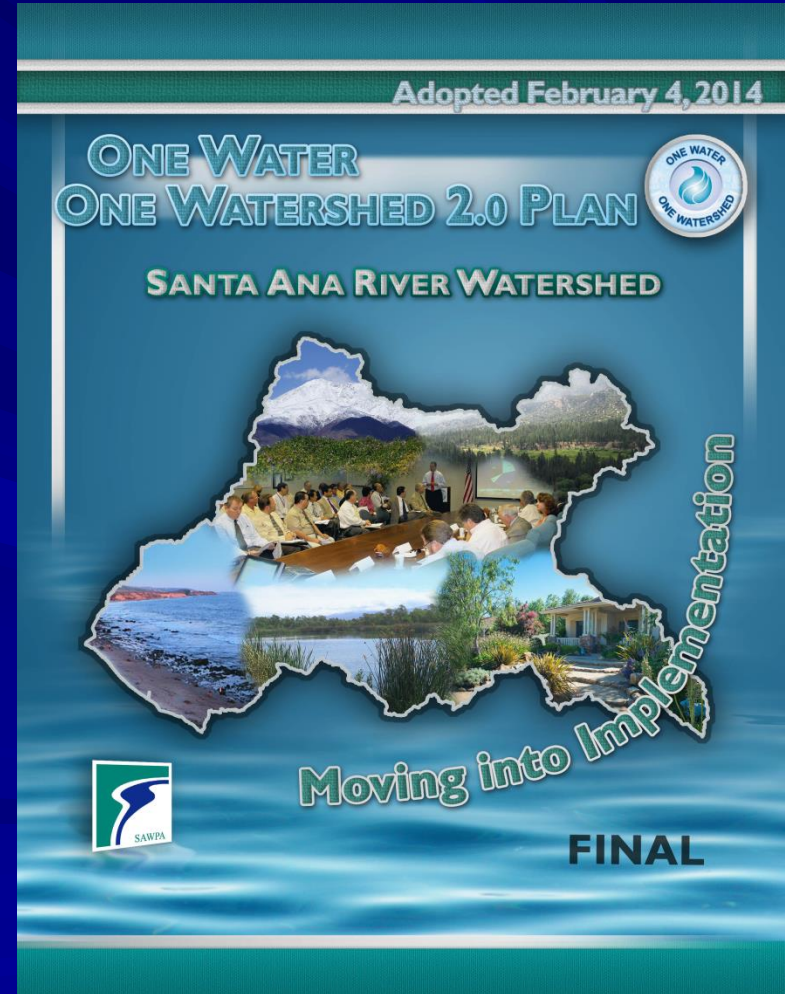


“Bottom Up” Approach



Steering Committee Roles

1. Develop the OWOW Plan



Integrated Regional Water Management



CALIFORNIA DEPARTMENT OF
WATER RESOURCES

[CA.gov](#) | [Help](#) | [Accessibility](#)

Search

DWR California

[HOME](#)

[NEWSROOM & EVENTS](#)

[ISSUES](#)

[ABOUT US](#)



IRWM Integrated Regional Water Management

What is IRWM?

Integrated Regional Water Management (IRWM) is a collaborative effort to identify and implement water management solutions on a regional scale that increase regional self-reliance, reduce conflict, and manage water to concurrently achieve social, environmental, and economic objectives. IRWM is the application of Integrated Water Management (IWM) principles on a regional scale.

To learn more about IRWM, please view the IRWM-related publications available through our Publications page.

IRWM HOME

» [REGIONAL RESOURCES](#)

» [IRWM GRANT PROGRAMS](#)

» [FUTURE OF IRWM](#)

» [IRWM RELATED RESOURCES](#)

Steering Committee Roles

2. Develop proposal for each funding opportunity

Rank	Project ID	Agency	Agency Name	Project Name
Recommended for Prop 84 Round 2 Funding				
1	2071	IEUA	Inland Empire Utilities Agency	Wineville Regional Recycled Water Pipeline and Groundwater Recharge System Upgrades
2	2068	USFS	USDA Forest Service - San Bernardino National Forest	Forest First - Increase Stormwater Capture and Decrease Sediment Loading through Forest Ecological Restoration
3	2050	EMWD	Eastern Municipal Water District	Perris Desalination Program - Brackish Water Wells 94, 95 and 96
4	2105	IEUA	Inland Empire Utilities Agency	San Sevaine Ground Water Recharge Basin
5	2275	Fontana	City of Fontana	Vulcan Pit Flood Control and Aquifer Recharge Project
6	2270	OCWD	Orange County Water District	Alamitos Barrier Improvement Project
7	2291	Yucaipa	City of Yucaipa	Wilson III Basins Project and Wilson Basins/Spreading Grounds
8	2285	Irvine	City of Irvine	Peters Canyon Channel Water Capture and Reuse Pipeline
9	2125	Corona	City of Corona Department of Water & Power	Corona/Home Gardens Well Rehabilitation and Multi-Jurisdictional Water Transmission Line Project
10	2284	MWDOC	Municipal Water District of Orange County	Commercial/Industrial/Institutional Performance-Based Water Use Efficiency Program
11	2062	EMWD	Eastern Municipal Water District	Quail Valley Subarea 9 Phase 1 Sewer System Project
12	2281	Ontario	City of Ontario	Francis Street Storm Drain and Ely Basin Flood Control and Aquifer Recharge Project
13	2237	WMWD	Western Municipal Water District	Customer Handbook to Using Water Efficiently in the Landscape
14	2078	SBVWCD	San Bernardino Valley Water Conservation District	Plunge Creek Water Recharge and Habitat Improvement
15	2098	OCWD	Orange County Water District	Prado Basin Sediment Management Demonstration Project
16	2154	SBVMWD	San Bernardino Valley Municipal Water District	Enhanced Stormwater Capture and Recharge along the Santa Ana River
17	2206	Upland	City of Upland	14th Street Groundwater Recharge and Storm Water Quality Treatment Integration Facility
18	2286	Soboba	Soboba Band of Luiseno Indians	Soboba Band of Luiseño Indians Wastewater Project
19	2174	LESJWA	Lake Elsinore and San Jacinto Watersheds Authority	Canyon Lake Hybrid Treatment Process
20	2287	Riverside	City of Riverside	Recycled Water Project Phase I (Arlington-Central Avenue Pipeline)
21	2012	WMWD	Western Municipal Water District	Arlington Basin Water Quality Improvement Project
22	2168	IEUA	Inland Empire Utilities Agency	Regional Residential Landscape Retrofit Program

SAWPA Commission Review



2016 Integrated Regional Water Management Grant Program Guidelines

Volume 1 - Grant Program Processes
July 2016



CALIFORNIA NATURAL RESOURCES AGENCY
DEPARTMENT OF WATER RESOURCES
DIVISION OF
INTEGRATED REGIONAL WATER MANAGEMENT



2015 Proposal Solicitation Package

Integrated Regional Water Management
Implementation Grant Program
Funded by Proposition 84
May 2015



The Natural Resources Agency
Department of Water Resources
Division of Integrated Regional Water Management

Why do we have the governance structure?

Water Code Section 10534.

“Integrated regional water management plan” means a comprehensive plan for a defined geographic area, the specific development, content, and adoption of which shall satisfy requirements developed pursuant to this part. At a minimum, an integrated regional water management plan describes the major water-related objectives and conflicts within a region, considers a broad variety of water management strategies,....

<u>materials.</u>	
<p><u>RWGM Composition:</u></p> <p>3. A description of the composition of the RWGM. Identify RWGM members, including their statutory authority over water supply or water management, their role in the IRWM effort, regional water management responsibilities, and the level of IRWM participation. For each entity, state whether they have adopted, plan to adopt, or will not adopt the IRWM Plan. For the purposes of this document “statutory authority over water supply or water management” may include, but is not limited to, water supply, water quality management, wastewater treatment, flood management/control, or storm water management. This should include a discussion of whether or how Native American Tribes will participate in the RWGM.</p> <p>4. A description of the difference between RWGM members and stakeholders in terms of development, participation, decision-making, and adoption of the IRWM Plan.</p>	<ul style="list-style-type: none"> • Have all the RWGM members indicated that they have adopted or plan to adopt the completed IRWM plan? • Does the RWGM consist of at least 3 agencies with at least 2 local agencies having statutory authority over water supply, water quality, water management, or flood protection? • Was a discussion provided about the participation of Native American Tribe in the RWGM? • Is there diversity in the water management responsibilities of the RWGM members? • For entities that are not currently participating in the IRWM effort, are any of these not adequately represented by other RWGM members or stakeholders holding similar water management interests?

2016 Integrated Regional Water Management Grant Program Guidelines

Volume 1 – Grant Program Processes
July 2016



CALIFORNIA NATURAL RESOURCES AGENCY
DEPARTMENT OF WATER RESOURCES
DIVISION OF
INTEGRATED REGIONAL WATER MANAGEMENT



<u>Governance:</u>	
<p>11. Describe the RWGM governance structure and how it will facilitate the sustained development of regional water management and the IRWM process, both now and beyond the state grant IRWM funding programs.</p> <p>12. Describe how decisions are made. Identify the steps by which the RWGM arrives at decisions and how RWGM members and stakeholders participate in the decision-making process. Examples of RWGM decisions to consider in the discussion include:</p> <ol style="list-style-type: none"> Establishing IRWM Plan goals and objectives Prioritizing projects Financing RWGM and IRWM Plan activities Implementing plan activities Making future revisions to the IRWM Plan <p>13. Describe how the RWGM will incorporate new members into the governance structure. Explain the manner in which a balance of interested persons or entities representing different sectors and interests have been or will be engaged in the process, regardless of their ability to contribute financially to the plan.</p> <p>14. Describe any conflict resolution processes and any known existing conflicts regarding water management in the region.</p>	<ul style="list-style-type: none"> • Is it clear how decisions are made, including establishing plan goals and objectives, prioritizing projects, financing RWGM activities, implementing plan activities, and making future revisions to the IRWM Plan? • Who participates in the decision making process? • Are all of the RWGM members involved or are there designated committees? • Does the governance structure allow only certain RWGM members to vote on decisions? • Does the decision making process allow for the participation of stakeholders and smaller entities? • Can stakeholders influence RWGM decisions? • Do members have to contribute financially to the RWGM to be allowed a voice? • Can the RWGM governance structure facilitate the sustained development of the IRWM region now and beyond the current IRWM funding programs? • Do conflict resolution processes exist in the governance structure? • Will the processes and procedures as described result in the promotion of integrated, multi-benefit, regional solutions that incorporate environmental stewardship toward development and implementation of the IRWM

SAWPA and Regional Planning

SOUTHERN CALIFORNIA INTEGRATED WATERSHED PROGRAM PROJECT STATUS AND SCHEDULE

As of 7/31/01

Agency	No.	Project	Start Con
City of Norco	4	Recycled Water Piping	04/01
Western Municipal Water District	58	Agricultural Water Conveyance	
Rubidoux Community Services District	64	La Verne WTF Expansion	
San Geronio Pass Agency	49	Recharge Basins	
SAWPA Env/Habitat Fund	16	Environmental/Habitat Fund	
SAWPA	16A	Arundo Removal	
OCWD	98	Dairy Wash Water Treat	
Western Municipal Water District	60	MARB GW Recovery	
PA- 14 SAWPA	68	Chino 2, Arlington etc.	
Yucaipa Valley Water District	83	Recycled Water and He	
Orange County Water District	50	GWRS	
San Bernardino County Flood Control	87	Riverside Drive Storm	
City of Riverside	62	Canal Repair	
San Bernardino Valley MWD	70	Baseline Feeder	
San Bernardino Valley MWD	71	High Groundwater Pu	
San Jacinto Basin Resource Cons Dist	76	Salinity Laboratory Fa	
Western Municipal Water District	59	MARB Tertiary Treatm	
Riverside County Flood Control	88	Eastvale San Bern Line	
City of Redlands	55	Recycled Water and De	
Eastern Municipal Water District	5	4.5 MGD Perris Desalter	
Eastern Municipal Water District	13	San Jacinto Water Harvest	
Inland Empire Utilities Agency	18-24	Recycled Water System	
Inland Empire Utilities Agency	25-40	Recharge Basin Projects	
Jurupa Community Services District	77	Chino 1-2 Desalter Interlie	
SAWPA/SWRCB	5%	Administrative Reserve	

Budget, Schedule and CEQA Info Not Rec'd

CEQA Review

Project Authorization Package

Awaiting SWRCB Approval

SWRCB Approved, Contract Pending

Start Con = Start Construction

Contract = Start Project Authorization/Contracting Process

SCIWP = Southern California Integrated Watershed Project, grant funding amount

Other = non-grant funding amount

Complete = scheduled project completion date

Notes

- (1) List Modified
 - (2) 7/2/01 letter request
 - (3) EMWD staff indicate in
 - (4) IEUA staff indicate first project su
 - (5) August SWRCB Meeting
 - (6) September SWRCB Meeting
- GOAL: ALL PROJECT CONTRACTS EXECUTED BY MARCH 2002

ANA WATERSHED
THORITY



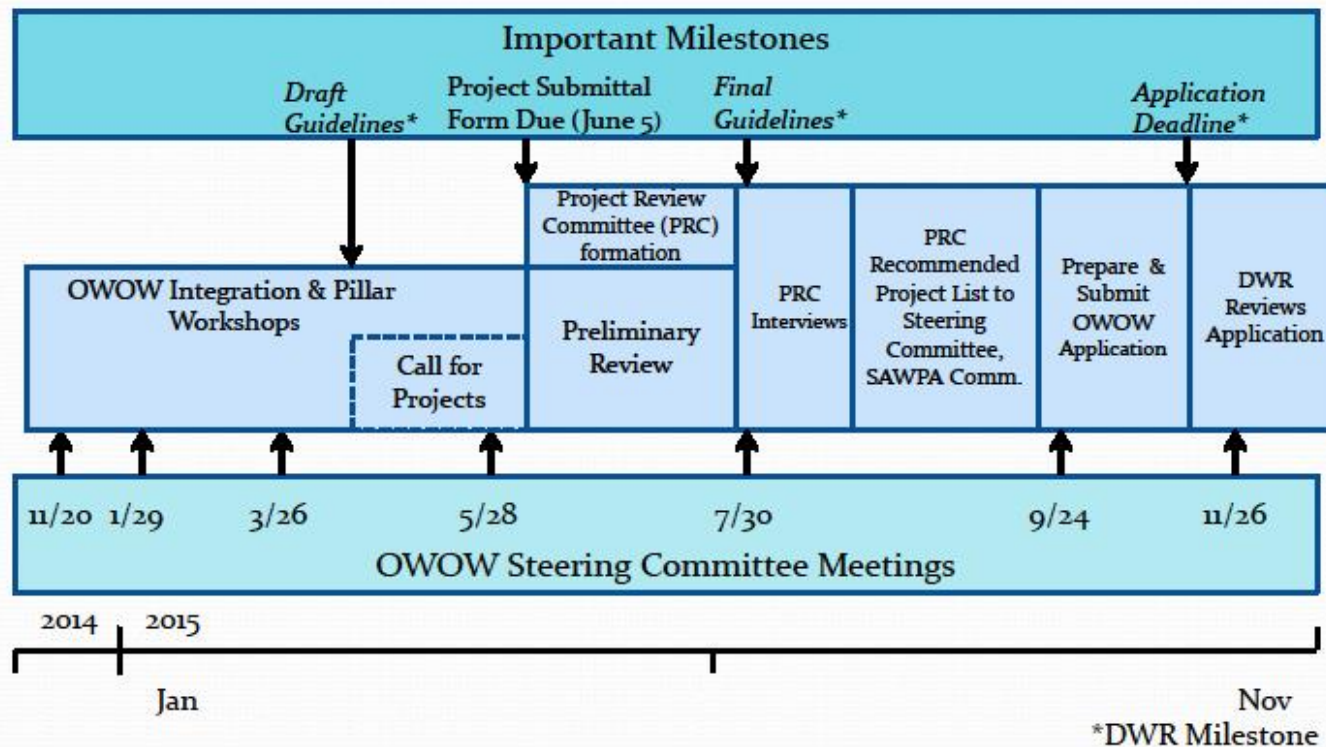
ated Watershed Plan

gional Water Management Plan

June 2005

Application of the Governance Structure

2015 OWOW Implementation For 2014 - 2015



Application of the Governance Structure

Rank	Project ID	Agency	Agency Name	Project Name
Recommended for Prop 84 Round 2 Funding				
1	2071	IEUA	Inland Empire Utilities Agency	Wineville Regional Recycled Water Pipeline and Groundwater Recharge System Upgrades

RECOMMENDATION

The Project Review Committee (PRC) recommends that the OWOW Steering Committee:

1. Authorize implementation of the Proposition 84 2015 Integrated Regional Water Management (IRWM) grant proposal to the Department of Water Resources (DWR) with the proposed OWOW 2015 Implementation integrated project portfolio:
 - \$55 million grant funding for the Santa Ana River Conservation and Conjunctive Use Program (SARCCUP),
 - \$5,054,302 million grant funding for the Riverside County Flood Control and Water Conservation District (RCFCWCD) integrated and regional water resources program; and
 - \$1 million grant funding for the Newhope-Placentia Trunk Replacement.

17	2206	Upland	City of Upland	14th Street Groundwater Recharge and Storm Water Quality Treatment Integration Facility
18	2286	Soboba	Soboba Band of Luiseno Indians	Soboba Band of Luiseño Indians Wastewater Project
19	2174	LESJWA	Lake Elsinore and San Jacinto Watersheds Authority	Canyon Lake Hybrid Treatment Process
20	2287	Riverside	City of Riverside	Recycled Water Project Phase I (Arlington-Central Avenue Pipeline)
21	2012	WMWD	Western Municipal Water District	Arlington Basin Water Quality Improvement Project
22	2168	IEUA	Inland Empire Utilities Agency	Regional Residential Landscape Retrofit Program



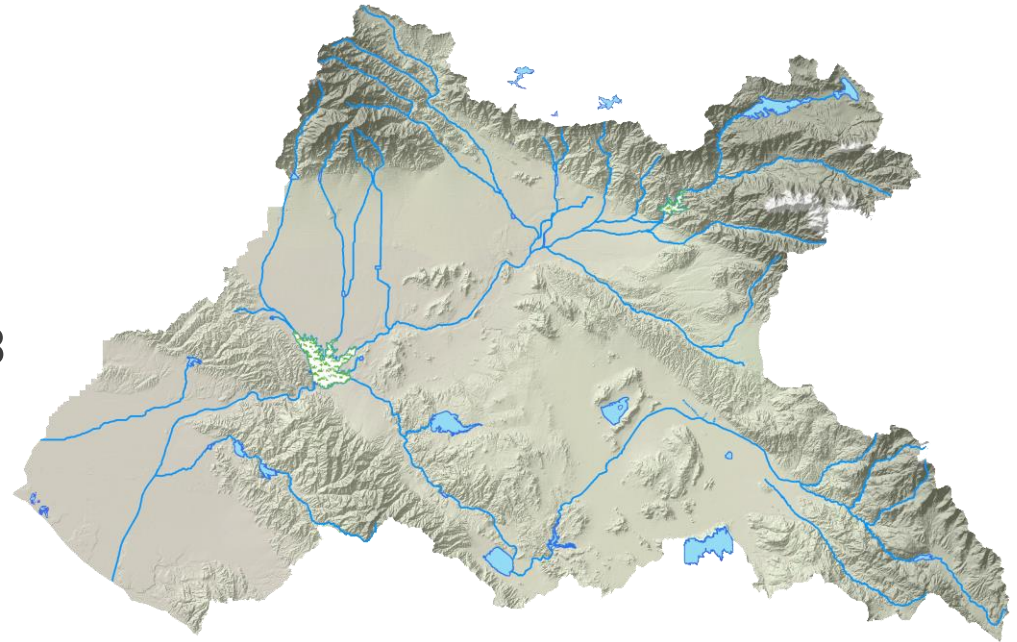
OWOW PLAN UPDATE 2018

STEERING COMMITTEE SECOND WORKSHOP ON GOALS & OBJECTIVES



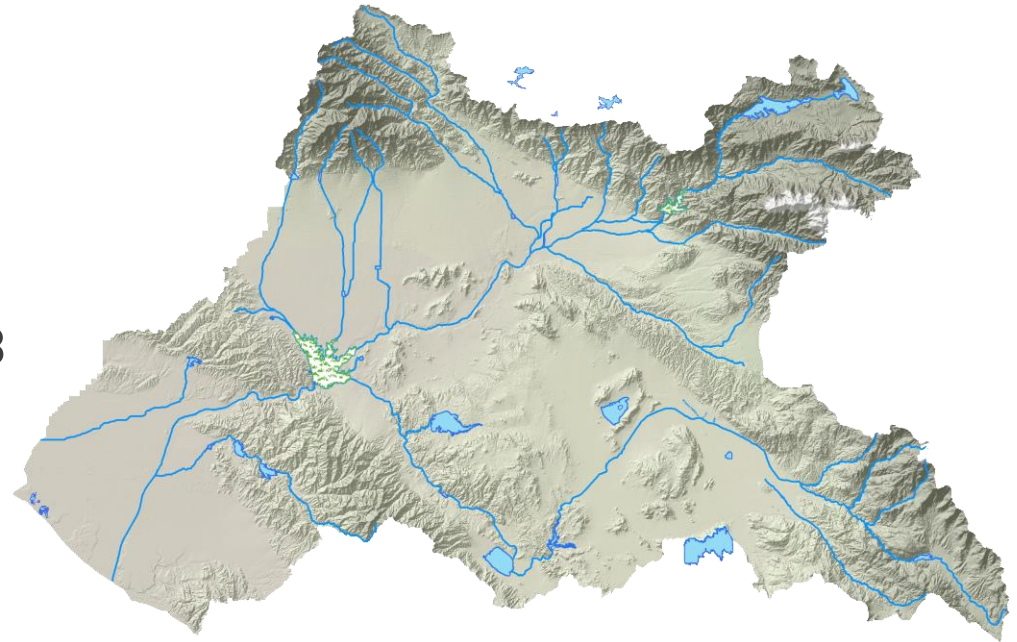
OWOW PLAN UPDATE 2018

- Where are we headed?
 - Goals & Objectives
- Where are we today?
 - OWOW Plan Update 2018
- How do we get there?
 - Conceptual projects
 - Call for Projects for plan inclusion
 - Separate sub-list for rounds of funding



OWOW PLAN UPDATE 2018

- Where are we headed?
 - **Goals & Objectives**
- Where are we today?
 - OWOW Plan Update 2018
- How do we get there?
 - Conceptual projects
 - Call for Projects for plan inclusion
 - Separate sub-list for rounds of funding

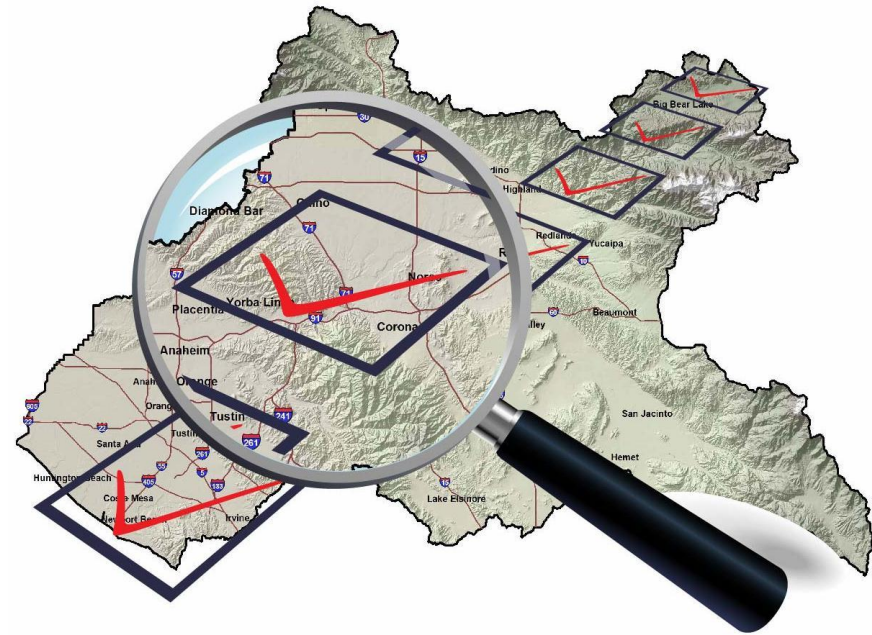


GOALS & OBJECTIVES PROCESS TO-DATE

- April:
 - Pillar Integration meeting reviewed OWOW 1 & 2 goals, brainstorm
- May:
 - OWOW Conference display (only light engagement)
- April – June:
 - Pillar chairs and workgroups reviewed and provided comments
- June:
 - update to Pillar Integration Meeting
- July:
 - workshop with OWOW Steering Committee
- September:
 - OWOW Steering Committee agenda business item
- October:
 - SAWPA Commission agenda business item
- Today:
 - workshop

GOALS & OBJECTIVES NEXT STEPS

- Today:
 - Approval by the OWOW Steering Committee of the Goals & Objectives, as edited today during the workshop
- Going forward:
 - OWOW Plan Update 2018 authors will use the goals & objectives to complete chapters



WORKSHOP

- This screen will have a word file that can be edited in real time.
- Steering Committee will direct what we work on.

