

**Finding of Emergency and Urgent  
Necessity to Act to Complete the Reach  
V Rehabilitation and Repair Project**

David Ruhl

August 2, 2016



10/18/2011

# Brine Line Spill Oct 2011





# Inland Empire Brine Line Rehabilitation and Improvement Project



Begin Project

Inland Empire Brine Line

Installation of Liner at Access Pit

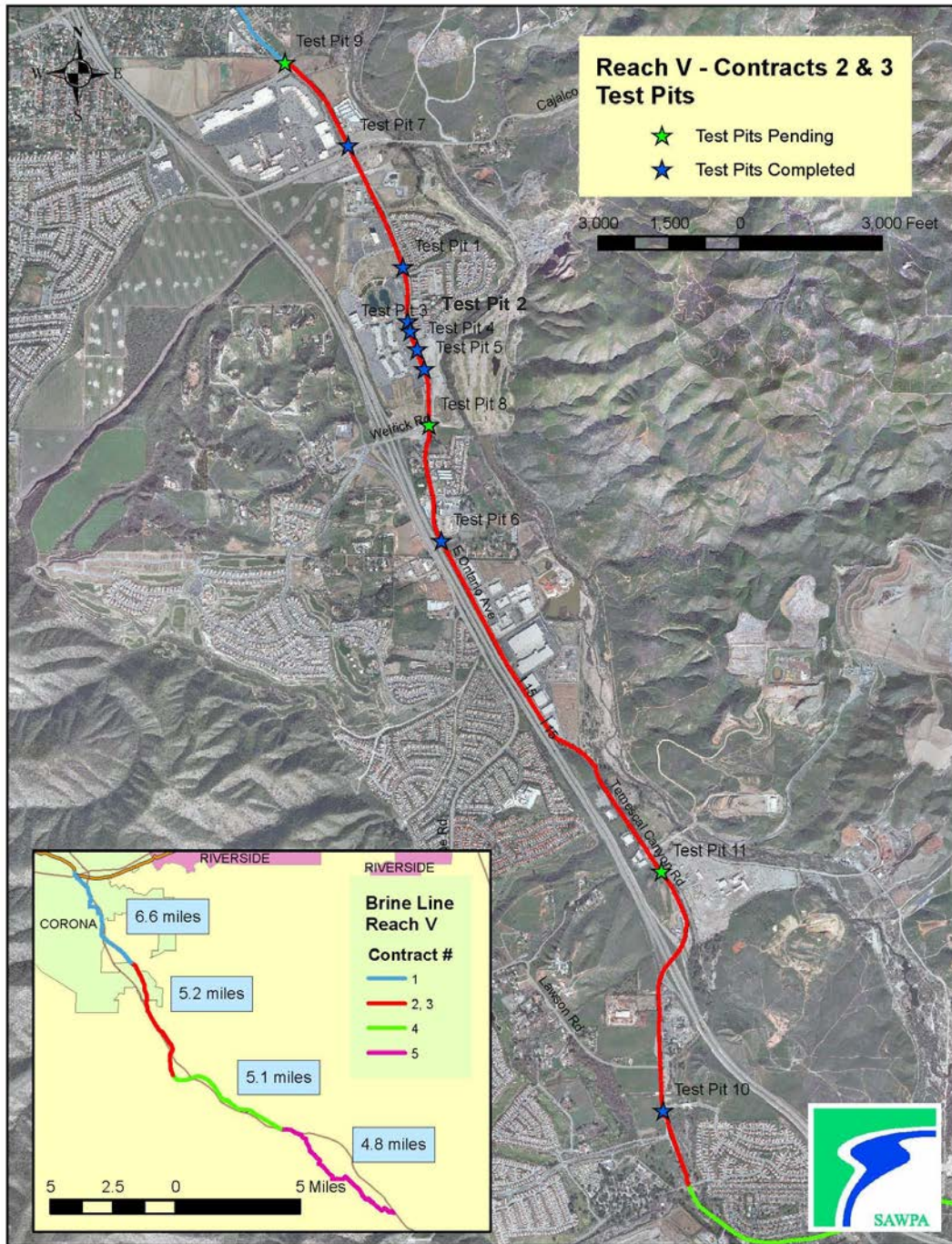
Installation of Liner in Brine Line

End Project

Google earth

1995

Imagery Date: 1/12/2013 33°47'33.19" N 117°29'51.30" W elev 942 ft eye alt 24271 ft



## Pipe Deflection

Test Pit 1 (573 + 30) 4.7%

Test Pit 2 (559 + 14) 5.4%

Test Pit 3 (558 + 30) 7.1%

Test Pit 4 (553 + 35) 5.6%

Test Pit 5 (550 + 20) 2.7%

Test Pit 6 (512 + 45) 6.6%

Test Pit 7 (600 + 10) 3.7%

Test Pit 8 – Test abandoned

Test Pit 9 – Test abandoned

Test Pit 10 (371 + 60) 3.6%

Test Pit 11 (419 + 25) 6.6%

# By-Pass Line Risks



June 13, 2016

