



Arundo Donax Maintenance and Removal Project Final Report



SAWPA Commission

April 19, 2016



Recommendation

- That the Commission receive and files this final report on the Arundo Donax Maintenance and Removal Project.



Arundo Donax

- Invasive Plant (High Rating)
- Noxious Weed
- Uses 528 gal per meter annually
- Highly combustible
- Survives fire and thrives
- Causes flooding by altering flow regimes
- No known habitat benefit



River Road Bridge Damage

- El Nino 1998
- \$260K repair
- \$8M replacement bridge

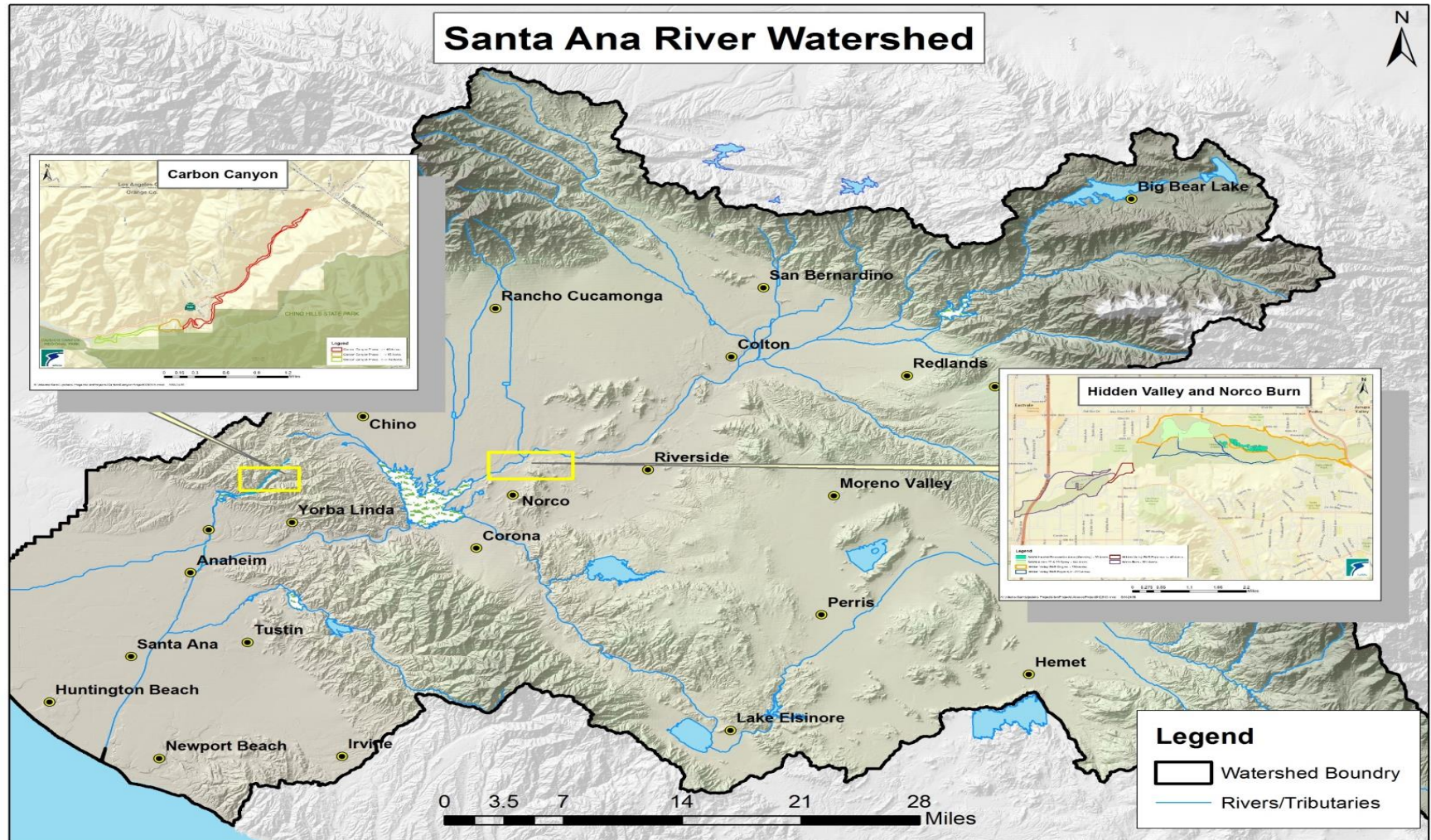


SAWPA Removal Project

- Task Order w/SAWA – June 2012
- Project Completed – December 2015
- 61 acres treated containing Arundo
- 2,180 acres assessed
- 1,233 AFY estimated water savings
- Removal by cut stump and foliar spray



Project Locations



SAWPA Removal Project



SAWPA Removal Project



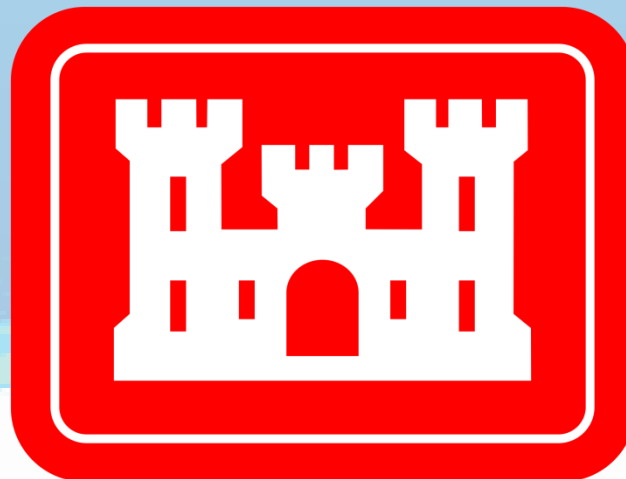
Current Projects Connected to Proposition 13

- State Board Grant
- \$22M Arundo implementation budget
- Mostly mechanical removal
- Purchased Units in Mitigation Bank

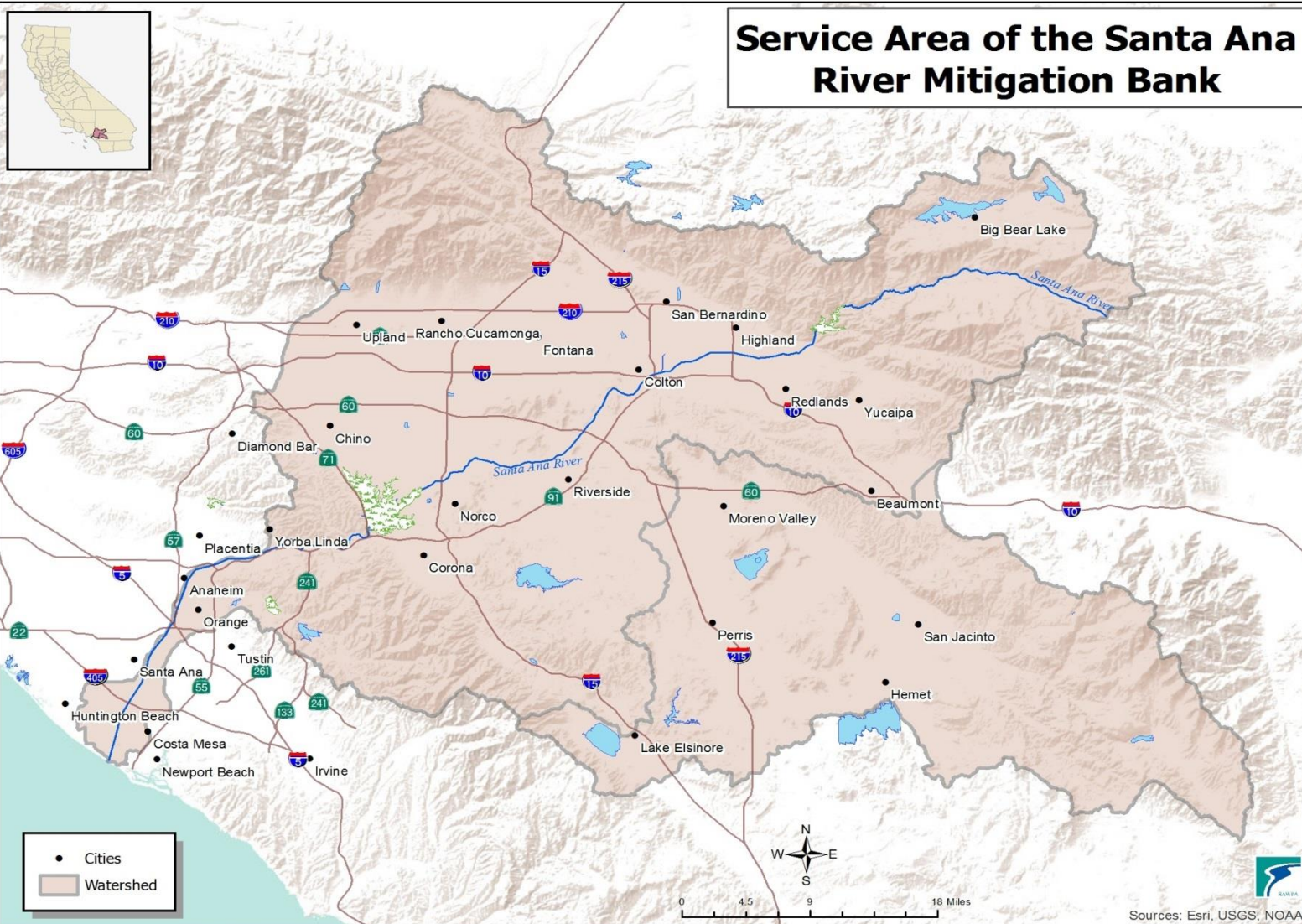


Funding Source for Project

- Santa Ana River Mitigation Bank
 - Operated by Riverside County Parks
 - Created in 1996 (Pre-Prop 13) with Corps
 - SAWPA purchased 100 “units” in 2002
 - Units were certified as “credits” by Corps



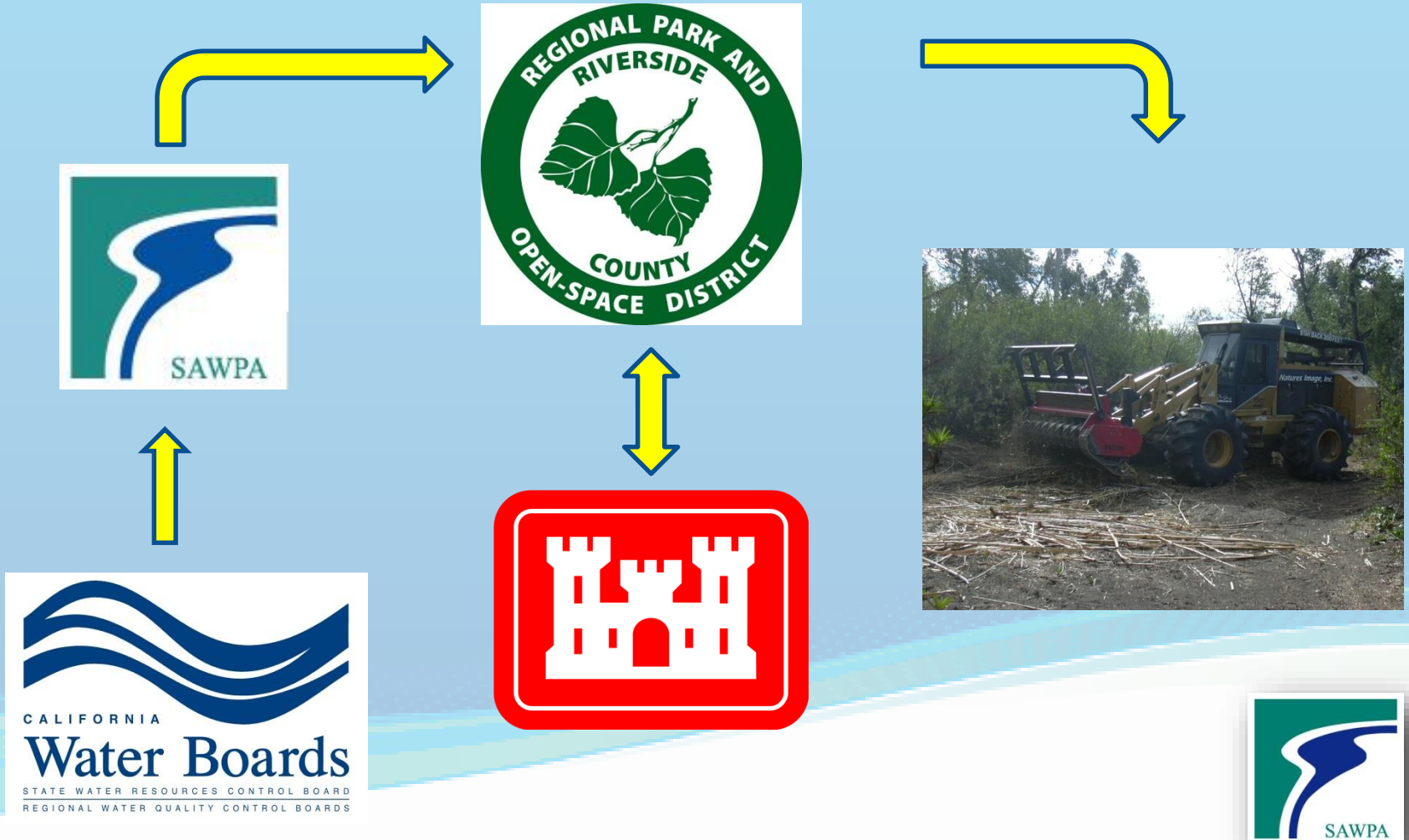
Service Area of the Santa Ana River Mitigation Bank



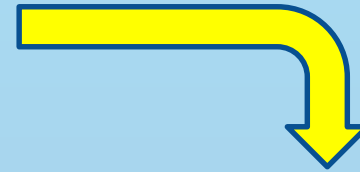
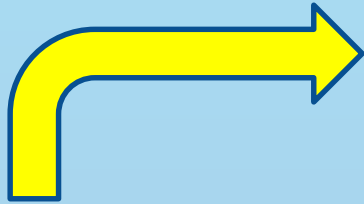
P:\projects\lan\MitigationBank\Service Area of the Santa Ana River Mitigation Bank.mxd SW-2526



SAWPA Purchases Units



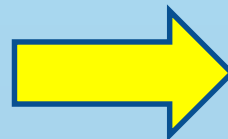
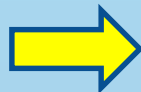
Credit Purchases Fund SAWPA Arundo Removal Projects



Consultant



Credit Purchases Fund SAWPA Projects Over Time



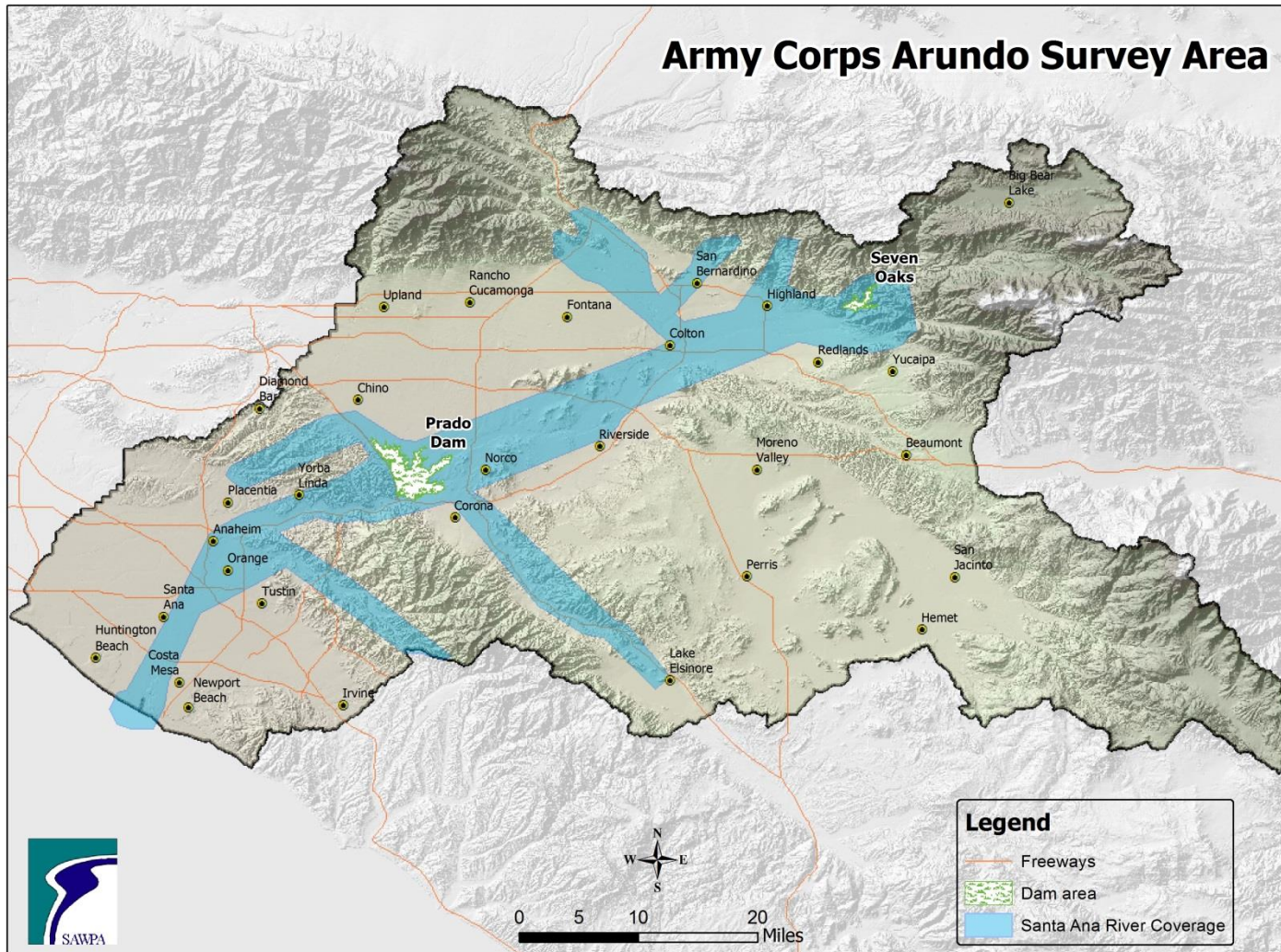
Consultants

Past Projects Funded:

- Sunnyslope Creek
- Mission Bridge
- Santiago Canyon
- Mockingbird Canyon
- Santa Ana River Mainstem
- Mystic Lake
- Norco Burn
- Temescal Canyon



Next Steps



Recommendation

- That the Commission receives and files this final report on the Arundo Donax Maintenance and Removal Project.



Prop 1 Integrated Regional Water Management 2016 Grant Program



SAWPA Commission
April 19, 2016





Recommendation

- It is recommended that the SAWPA Commission receive and file this briefing about two Proposition 1 Integrated Regional Water Management Grant Programs:
 1. 2016 Planning Program;
 2. 2016 Disadvantaged Community Involvement Program.



Timeline



- SAWPA accepted in IRWM Regional Acceptance Process in Sept 2009
- Adopted OWOW 2.0 Plan in Feb 2014
- Prop 1 passed in Nov 2014
- Draft DWR IRWM Guidelines released in Jan 2016
- IRWM Applications due in June 2016



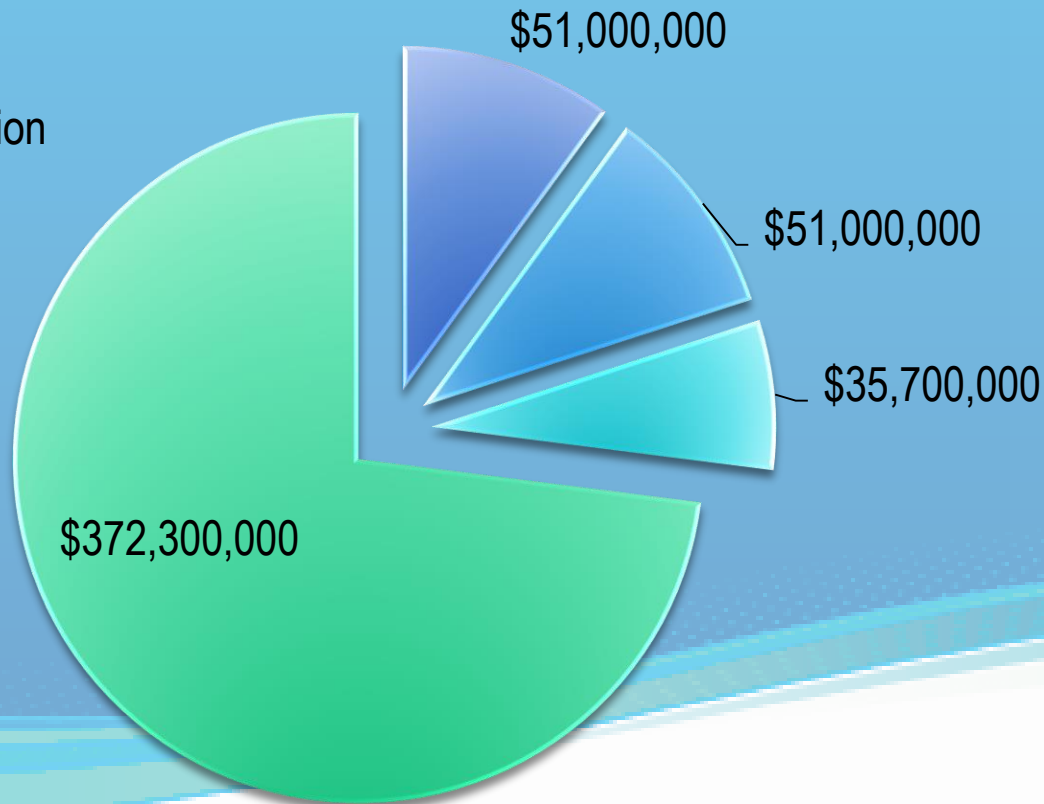
IRWM Grant Program: \$510m Total

■ DAC Involvement

■ DAC Implementation

■ DWR Admin

■ Implementation & Planning



IRWM Grant Program: \$474.3m Available Draft DWR funding rollout

Fiscal Year	IRWM Program	Funding
FY 15-16	Planning	\$5M
FY 15-16	DAC Involvement	\$51M
FY16-17	DAC Projects	\$51M
FY17-18	Implementation	\$183.65M
FY 19-20	Implementation	\$183.65M



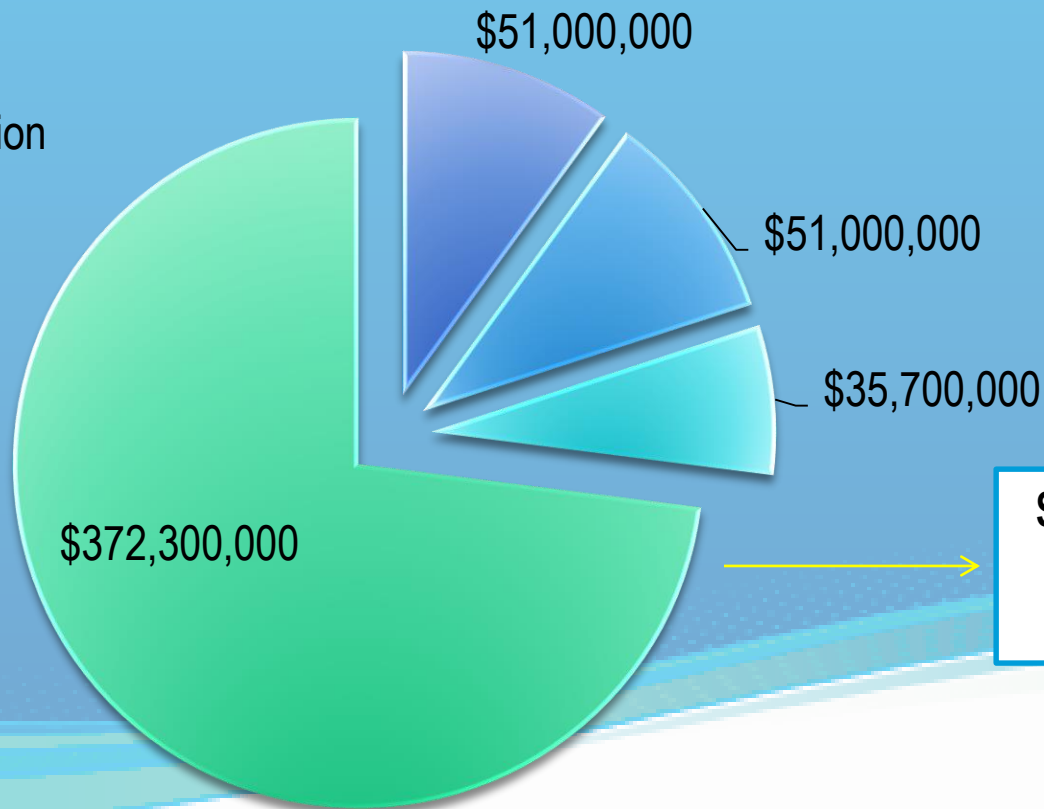
IRWM Grant Program: Planning Grant \$5m

■ DAC Involvement

■ DAC Implementation

■ DWR Admin

■ Implementation & Planning



**\$5M Available
Across
California**



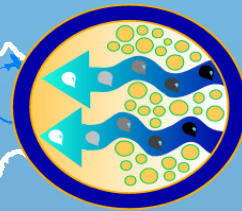
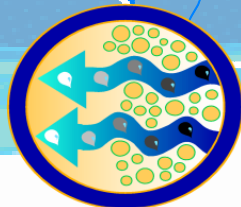
Planning Grant

- New legislation and new Plan requirements:
 - Senate Bill 985
 - Assembly Bill 1249
- Applications for accepted regions limited to \$50K- \$250K
- \$5M available statewide
- 50% local match requirement
 - Cost share of \$25K to \$125K



Updates to OWOW 2.0 Planned for Next Year

- Senate Bill 985: Stormwater resource plans
- Assembly Bill 1249: Nitrate, arsenic, perchlorate, etc.
- Update salt balance for watershed



Next Steps

- Develop Scope of Work For Updating OWOW 2.0 Plan
 - April – May 2016
- OWOW Steering Committee Application Authorization
 - May 26, 2016
- SAWPA Commission Application Authorization
 - June 7, 2016
- Submit Application to DWR
 - June X, 2016

Disadvantaged Community Involvement Program

- Bond calls for:
 - “ensuring involvement of disadvantaged communities (DACs), economically distressed areas (EDAs), or underrepresented communities”
- DWR program objectives:
 - Work collaboratively to involve DACs, community-based organizations, and stakeholders in IRWM Planning efforts to ensure balanced access and opportunity for participation in the IRWM planning process
 - Increase the understanding, and where necessary, identify the water management needs of DACs on a Funding Area basis
 - Develop strategies and long-term solutions that appropriately address the identified DAC water management needs



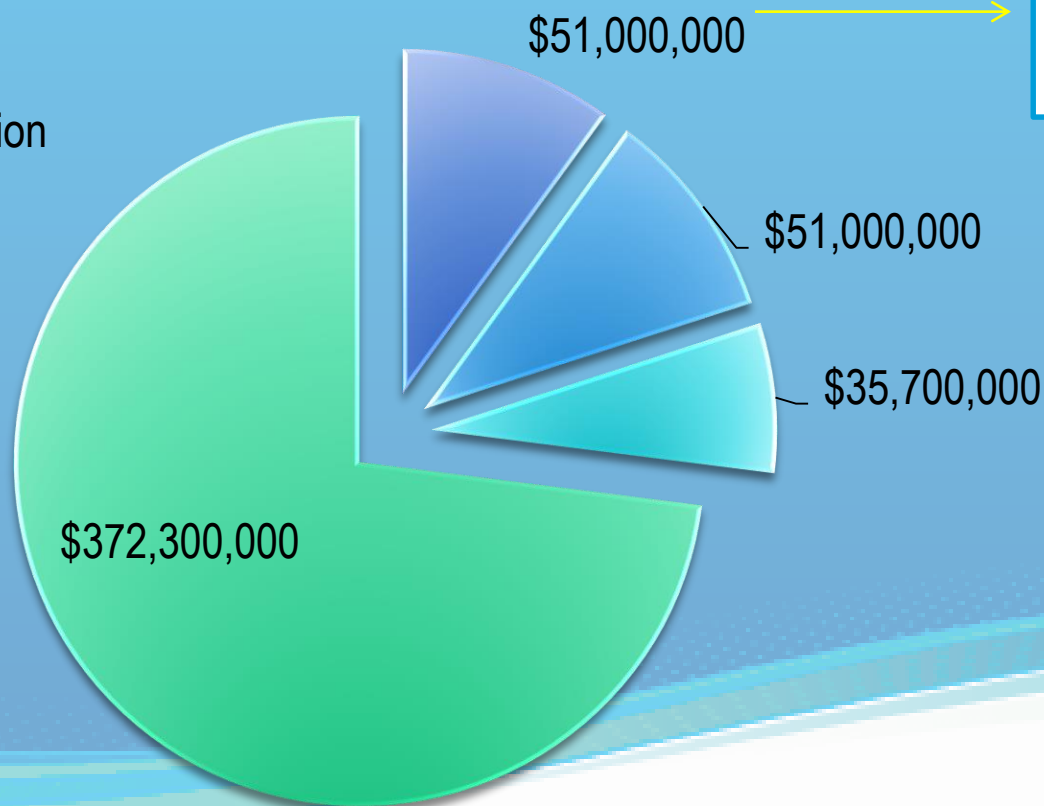
IRWM Grant Program: DACI Grant \$6.3m

■ DAC Involvement

■ DAC Implementation

■ DWR Admin

■ Implementation & Planning



\$6.3M for Santa Ana IRWM Region



Allowable General Activities

Table 3 from Public Review Draft DACI RFP

General Activity	Examples of Activity
Technical assistance	Service provider trainings, local circuit rider programs to train water and wastewater staff
Needs assessments	Surveys or meetings with community members to identify water management needs
Project development activities	Planning activities, environmental compliance, or pre-construction engineering/design activities
Site assessment	Water quality assessments, median household income surveys, data and mapping activities
Engagement in IRWM efforts	DAC regional engagement coordinator role, DAC Advisory Committee to RWMG, DAC representatives in governance
Governance Structure	Evaluation of existing governance structures and related plan financing efforts, assessments of the level of DAC involvement in decision making processes
Community outreach	Public project meetings open to community members, door-to-door outreach
Education	Translation or interpretive services for information sharing, water education campaigns for community members, education for RWMGs on DAC needs
Facilitation	Facilitated RWMG meetings, facilitated project development meetings
Enhancement of DAC aspects in IRWM Plans	Development of Funding Area-wide DAC plan to be utilized as a unified approach for all IRWM plans

Initial Scoping for OWOW Proposal

- OWOW Disadvantaged Community and Tribal Pillar convened to serve as advisory body to the program
- Three Program Efforts
 1. Needs assessment (required)
 2. Watershed engagement capacity building
 3. Multi-benefit project development



Initial Scoping for OWOW Proposal

1. Needs Assessment

- Spatial & Demographic data collection & analysis
- Engagement to identify community capacities
- Survey to identify agency engagement capacities and best practices
- Collection of identified needs per agency partners
- Collection of identified needs per community members
- Specific focus on Mutual Water Companies to assess long-term resilience



Initial Scoping for OWOW Proposal

2. Watershed Capacity Building

- Education about value of tap vs. bottled water
- Networking for water professionals and identified community leaders
- Translation services for key existing resources
- Update OWOW Chapter
- Engage new partners with Pillar scope of work
- Provide training for agency staff and community members to build familiarity and trust



Initial Scoping for OWOW Proposal

3. Project Development

- Identify key projects and develop for implementation funding round
 - Also consider non-DWR funding (*i.e., State Board Technical Assistance funding*)
- Scope and evaluate benefit of an ongoing OWOW Community Engagement Program
- Investigate usefulness of Enhanced Infrastructure Financing Districts (EIFD) in pursuit of water related improvements



Table 3 from Public Review Draft DACI RFP

General Activity	Examples of Activity
Technical assistance	Service provider trainings , local circuit rider programs to train water and wastewater staff
Needs assessments	Surveys or meetings with community members to identify water management needs
Project development activities	Planning activities, environmental compliance, or pre-construction engineering/design activities
Site assessment	Water quality assessments, median household income surveys, data and mapping activities
Engagement in IRWM efforts	DAC regional engagement coordinator role, DAC Advisory Committee to RWMG, DAC representatives in governance
Governance Structure	Evaluation of existing governance structures and related plan financing efforts, assessments of the level of DAC involvement in decision making processes
Community outreach	Public project meetings open to community members, door-to-door outreach
Education	Translation or interpretive services for information sharing, water education campaigns for community members, education for RWMGs on DAC needs
Facilitation	Facilitated RWMG meetings, facilitated project development meetings
Enhancement of DAC aspects in IRWM Plans	Development of Funding Area-wide DAC plan to be utilized as a unified approach for all IRWM plans

Next Steps

- Develop Scope of Work For Program
 - April – May 2016
- OWOW Steering Committee Application Authorization
 - May 26, 2016
- SAWPA Commission Application Authorization
 - June 7, 2016
- Submit Application to DWR
 - June X, 2016



Recommendation



- It is recommended that the SAWPA Commission receive and file this briefing about two Proposition 1 Integrated Regional Water Management Grant Programs:
 1. 2016 Planning Program;
 2. 2016 Disadvantaged Community Involvement Program.



Questions?



Request for Proposals for SARCCUP Project Management Services



Santa Ana River Conservation & Conjunctive Use Program

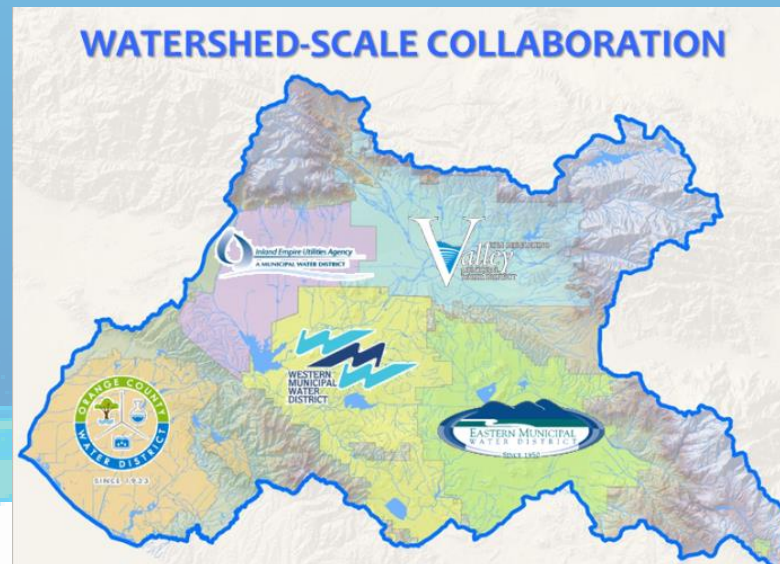
SAWPA Commission
April 19, 2016





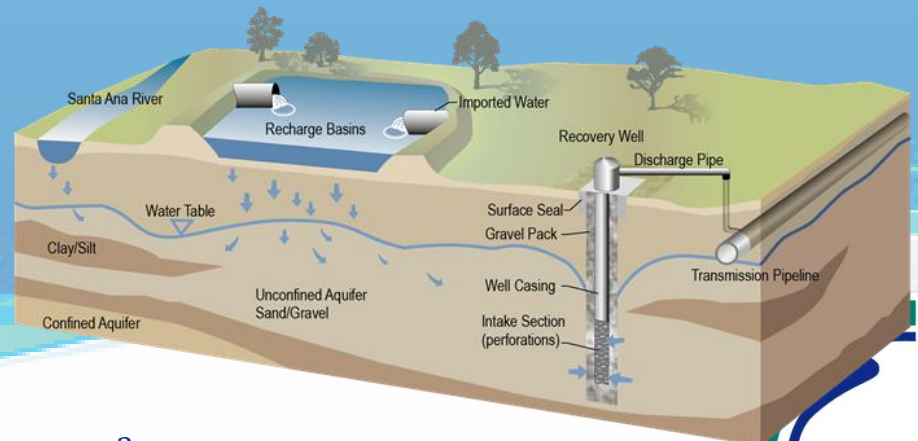
Recommendation

- It is recommended that the SAWPA Commission authorize the issuance of a Request for Proposals (RFP) for project management services to support the Santa Ana River Conservation and Conjunctive Use Program (SARCCUP)



SARCCUP Components

- **Habitat Improvement: Arundo Removal & Santa Ana Sucker fish habitat restoration – OCWD & SBVMWD**
- **Water Use Efficiency: Conservation-Based Rates Support, Water-use Efficient Landscaping Design – SAWPA PA 22 Committee**
- **Groundwater Banking: “Put and Take” Conjunctive Use Facilities – SBVMWD, WMWD, IEUA, EMWD**



SARCCUP Project Management Services



Key consultant tasks:

- Oversee and coordinate multiple SARCCUP components implementation as one project
- Works with all SARCCUP parties, new SAWPA PA 23 Committee and SAWPA to meet project goals, objectives, budget, schedule and other deliverables
- Ensure that all deliverables are provided to SAWPA, who serves as the grant administrator and liaison with DWR



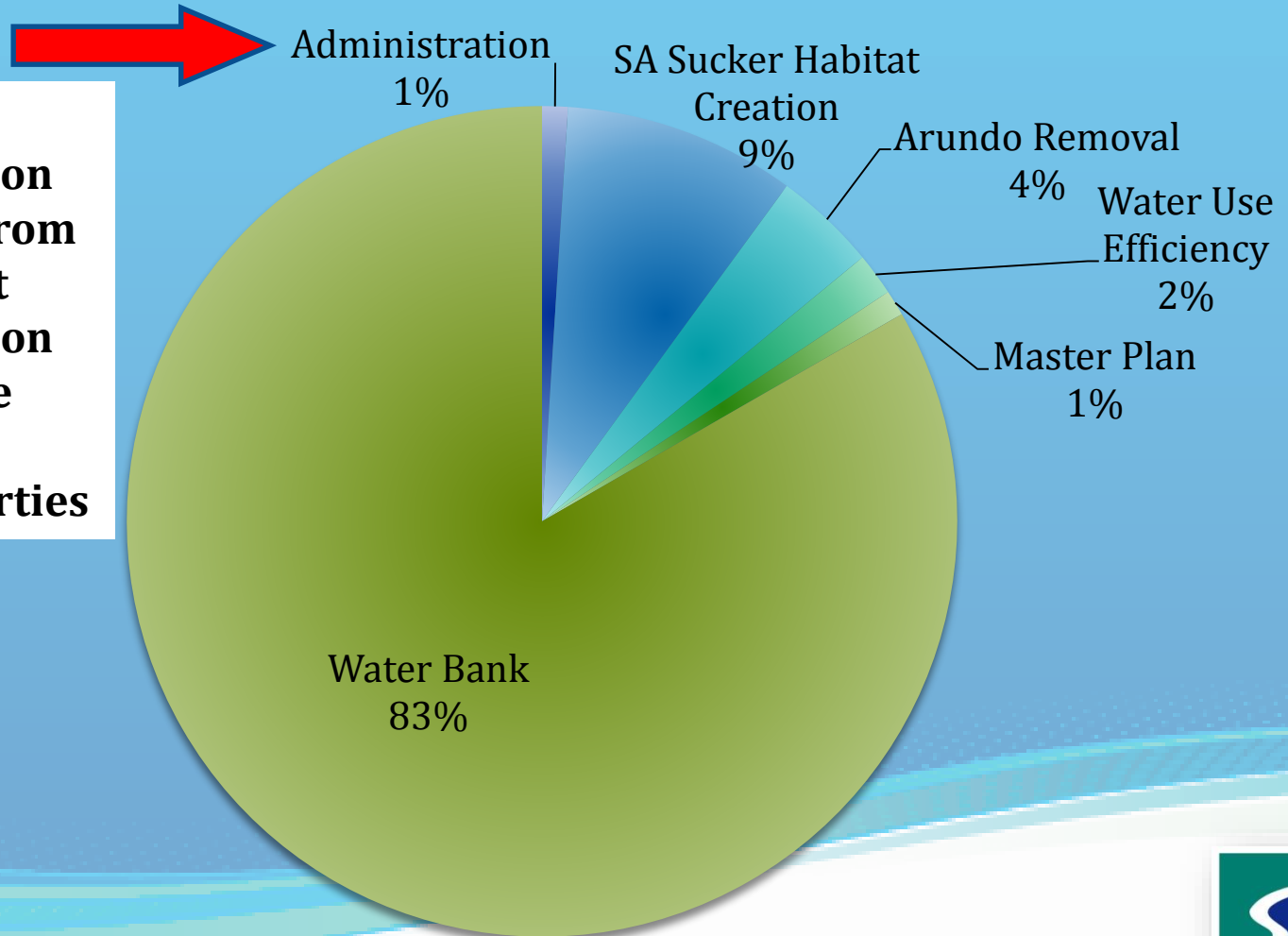
Oversight of SARCCUP Project Management Services

- SAWPA staff will issue RFP with SARCCUP member agency staff and SAWPA staff as review and selection panel
- SAWPA staff through new SAWPA PA 23 Committee will provide oversight of SARCCUP Project Mgt Services consultant
- Funding for SAWPA staff will come from SARCCUP administration budget, not SAWPA grant administration
- No duplication in roles and responsibilities



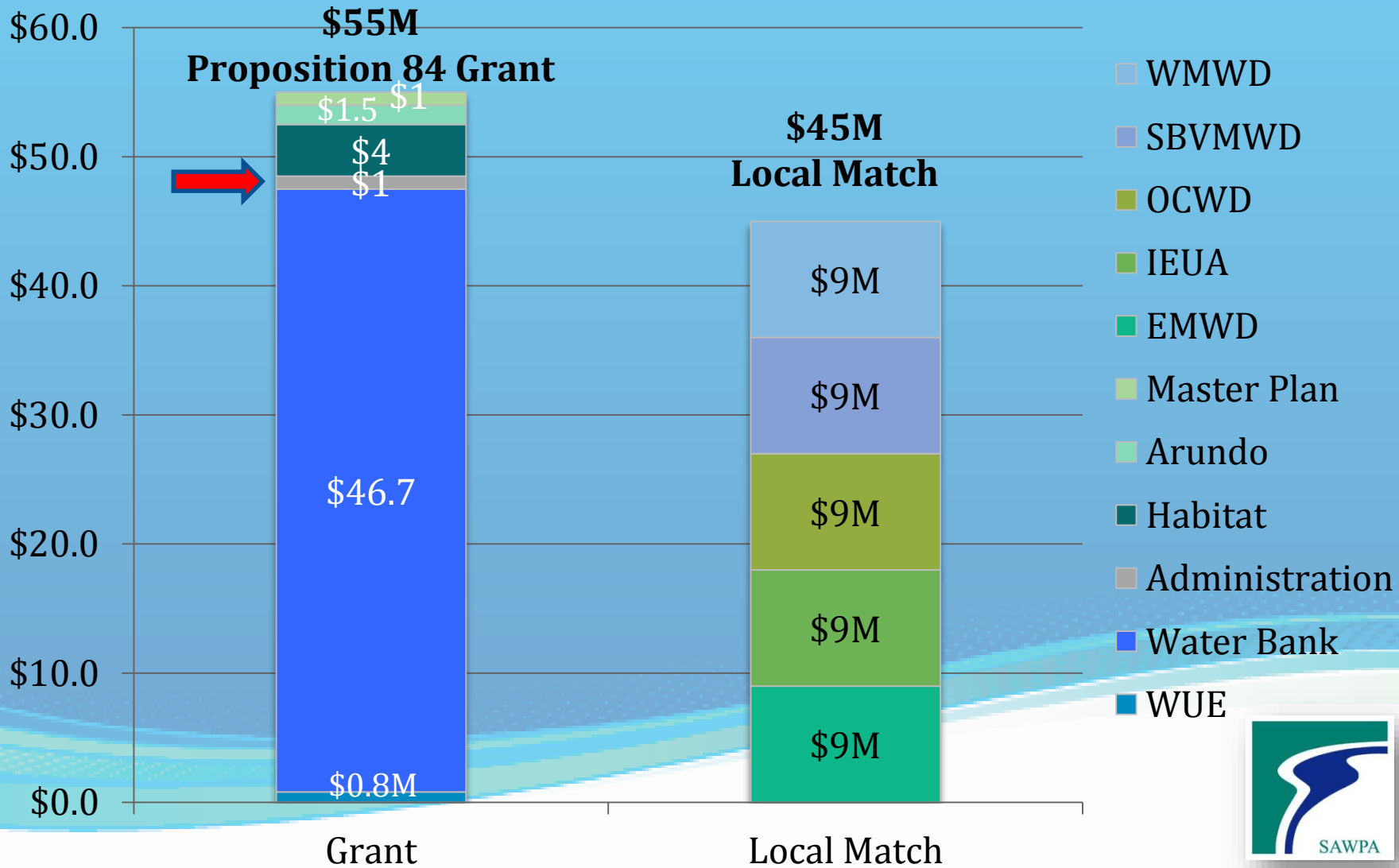
Total Cost, \$100 million

This project administration is separate from SAWPA grant administration and costs are borne by SARCCUP parties



Cost Sharing

Total SARCCUP Project Cost = \$100 million





Next Steps

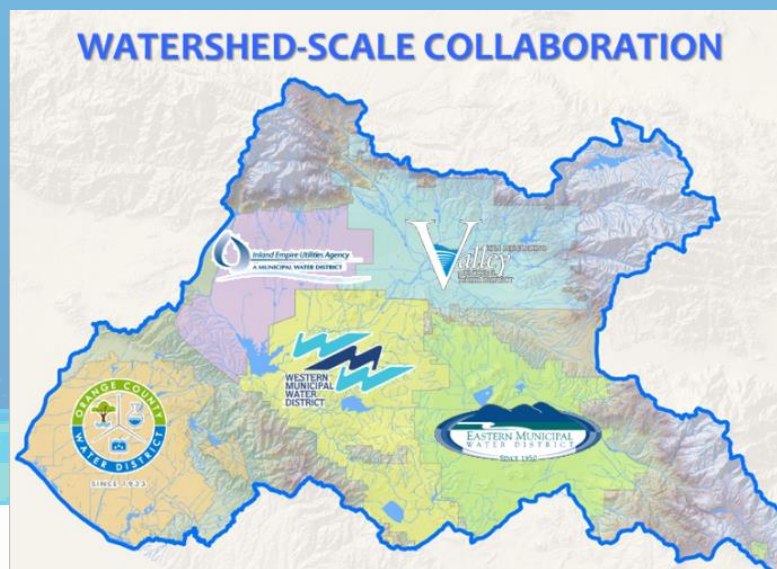
- SAWPA will issue RFP upon finalization and acceptance of SARCCUP member agencies, April 2016
- SAWPA PA 23 Committee formation considered by SAWPA Commission - May 2016
- SARCCUP and SAWPA selection panel recommends consultant and SAWPA Commission considers contract with SARCCUP project management consultant – June 2016
- DWR/SAWPA Agreement for Prop 84 2015 IRWM grant for three project including SARCCUP





Recommendation

- It is recommended that the SAWPA Commission authorize the issuance of a Request for Proposals (RFP) for project management services to support the Santa Ana River Conservation and Conjunctive Use Program (SARCCUP)



Questions?



Inland Empire Brine Line Rate

FY 2016-17 (Proposed)

Effective July 1, 2016

FY 2017-18 (For Planning Purposes Only)

Brine Line Rate

- Proposed FY17 rates based on Financial Model
 - Fixed versus Variable cost allocations.

	Fixed vs Variable Cost Allocation
Flow	40%
Fixed Pipeline	30%
Fixed Treatment	30%

- Updated SAWPA CIP
 - Repayment of SRF loan for re-lining of Reaches IV-A and IV-B (\$15.85M)
 - Reach V Repair, Nichols Road Relocation \$16M (\$7.5M SRF loan)
 - Reach IV-D Corrosion Repair (2017) \$2.5M
- OCSD Rock Removal Project \$1.5M

Brine Line Rate

- Rate

- Pass-through BOD and TSS costs from OCSD (+2%)

- Flow:

- OCSD Treatment (+2%)

- OCSD O&M of SARI in Orange County (SAWPA share)

- Variable O&M (example: line cleaning)

- Contribution to Flow Imbalance Fund

- Contribution to Capital Program

- Fixed Pipeline and Treatment:

- Fixed O&M (example: Dig Alert markings)

- Contributions to Flow Imbalance, Self Insurance Funds

- Contribution to Capital Improvement, Pipeline Replacement

- Debt Retirement, Self Insurance, OCSD Capital Program (SAWPA share)

Rates

	Fixed Pipe	Fixed Treatment
Current	\$5,370	\$10,888
FY 16-17	\$5,639	\$11,433
FY 17-18 (planning)	\$5,921	\$12,007

Notes:

1. Fixed Pipe Million Gallons (MG) per Month based on pipeline capacity owned
2. Fixed Treatment Million Gallons Per Month based on treatment capacity owned

Rates

	Flow	BOD	TSS
Current	\$817	\$301	\$420
FY 16-17	\$858	\$307	\$429
FY 17-18 (planning)	\$901	\$322	\$450

Notes:

1. Flow in Million Gallons (MG), BOD and TSS per 1,000 pounds (lbs)
2. BOD, TSS rates are “pass-through” from OCSD

Rates

<u>Waste Strength</u>	<u>BOD or TSS Concentration</u>	<u>FY 16-17</u>	<u>FY 17-18 (a)</u>
Brine	Less than 100 mg/l	\$ 0.011	\$ 0.012
Non-Brine Tier 1	100 to 999 mg/l	\$ 0.016	\$ 0.017
Non-Brine Tier 2	1,000 to 2,499 mg/l	\$ 0.033	\$ 0.035
Non-Brine Tier 3	2,500 and higher	(b)	

(a) Future rate for planning purposes only. The Commission will separately evaluate and set the rates annually for each FY.

(b) Concentrations over 2,500 mg/l will be charged based on the actual concentration of the waste discharged using the following costs components:

\$0.0027/gallon, \$0.695/pound of BOD, and \$0.662/pound of TSS.

Permit Fees

No Change

- Direct Discharger \$550/year
- Indirect Discharger \$250/year
- Liquid Waste Hauler \$225/year

New

- Emergency \$1,000/year (formerly direct discharger \$550/yr)
 - Most emergency connections have no discharge
 - Permit preparation and administration, inspection, sampling, reporting still required

Recommendation

- Commission adopt Resolution No. 2016-01, establishing new Inland Empire Brine Line rates effective July 1, 2016

END

Expenses

- SAWPA Labor – 3 field staff, 2 pretreatment program, 2 project manager, 1 manager
 - Requirements defined in Sanitary Sewer Management Plan
 - Reliable system operations
 - Minimize Sanitary Sewer Overflows
- Contracted Services – specialty equipment, unique capability
 - Line cleaning, corrosion coating system, CCTV, clean sediment traps

SAWPA Staff

Field:

- Operations – meter readings, valve operations, monitoring flow level, sediment traps, potholing for line location, marking, contractor coordination, observation of work in close proximity, MAS inspections
- Maintenance - air release/vacuum relief valve maintenance including confined space entry, traffic control for work zone, observation of contracted services, right of way
- Emergency/on-call response – SSOs, traffic accident, earthquake

Pretreatment Permit Activities

- Prepare and issue permit
- Site inspection (1x to 4x per year)
- Sampling
- Enforcement
- Reporting (monthly, quarterly, semi-annual, annual)
- Auditing – internal, OCSD, EPA
- Training
- Special – update Pretreatment Program Control Documents
- Coordination of team from 6 agencies
 - Standardization and efficiency

Indirect Discharger

Level of effort in rate:

Permit: issue new every two years (avg of 8 hrs), permit administration (12 hrs, assumes 1 minor enforcement action)

Reporting: one hr each report (12 hrs)

Billing: one-half hr per month (6 hrs)

Inspection, Sampling, data entry: by agency

Capital Improvement Program

- OCSD – rock removal
- Capital Repairs – corrosion protection system, MAS repairs, adjust grade of lid, erosion protection, sinkhole repair
- Projects
 - Reach V Repair
 - Reach V Relocation at Nichols Rd
 - Reach IV-D Corrosion Repair

Innovation, Efficiency

- Self prepared computerized maintenance management system
- Automated Dig Alert utility location database and record keeping system
- Automated control of a/v valves to reduce SSOs
- Potholing
- Spill response